



**COMPENSATED DENSITY  
NEUTRON  
LOG**

Company	Berexco, LLC	Company	Berexco, LLC
Well	Lebow #11	Well	Lebow #11
Field	Fairport	Field	Fairport
County	Russell	County	Russell
State	KS	State	KS
Location:	API #: 15 167 24085	Other Services	ML DIL BCS
Permanent Datum	660' FNL & 660' FWL C-NW-NW	Elevation	1953'
Log Measured From	KB 7' AGL	K.B.	1960'
Drilling Measured From	KB	D.F.	1959'
		G.L.	1953'

Date	12-6-18
Run Number	One
Depth Driller	3675'
Depth Logger	3674'
Bottom Logged Interval	3652'
Top Log Interval	2750'
Casing Driller	8 5/8" @ 296'
Casing Logger	296'
Bit Size	7 7/8"
Type Fluid in Hole	Chemical Mud
Density / Viscosity	9.3/57
PH / Fluid Loss	9.0/8.8
Source of Sample	Pit
Rm @ Meas. Temp	2.1@66degf
Rmf @ Meas. Temp	1.58@66degf
Rmc @ Meas. Temp	2.52@66degf
Source of Rmf / Rmc	Calculated
Rm @ BHT	1.4@99degf
Time Circulation Stopped	5:00 a.m
Time Logger on Bottom	7:34 a.m
Maximum Recorded Temperature	99degf
Equipment Number	T-127
Location	Hays, KS.
Recorded By	C.Patterson
Witnessed By	Mr. Jerry Smith

<<< Fold Here >>>

All interpretations are opinions based on inferences from electrical or other measurements and we cannot and do not guarantee the accuracy or correctness of any interpretation, and we shall not, except in the case of gross or willful negligence on our part, be liable or responsible for any loss, costs, damages, or expenses incurred or sustained by anyone resulting from any interpretation made by any of our officers, agents or employees. These interpretations are also subject to our general terms and conditions set out in our current Price Schedule.

**Comments**

Paradise,KS Hwy 18 Turn south on 2nd St then immediately West on Waldo St for 1/10 mi.  
Slight South on Main St then Back West(turn by house) on Waldo Rd. for .7 mi (comes to Y)  
Left Heading West to South on waldo St for 2.9 mi., Slightly West onto Luray St for 1.7 mi. to 177th St  
North on 177th St. 0.6 mi.,East Through Cattle Guard then East to North down Existing Lease Rd  
into Location  
into Location

Thank you for using Gemini Wireline  
785-625-1182

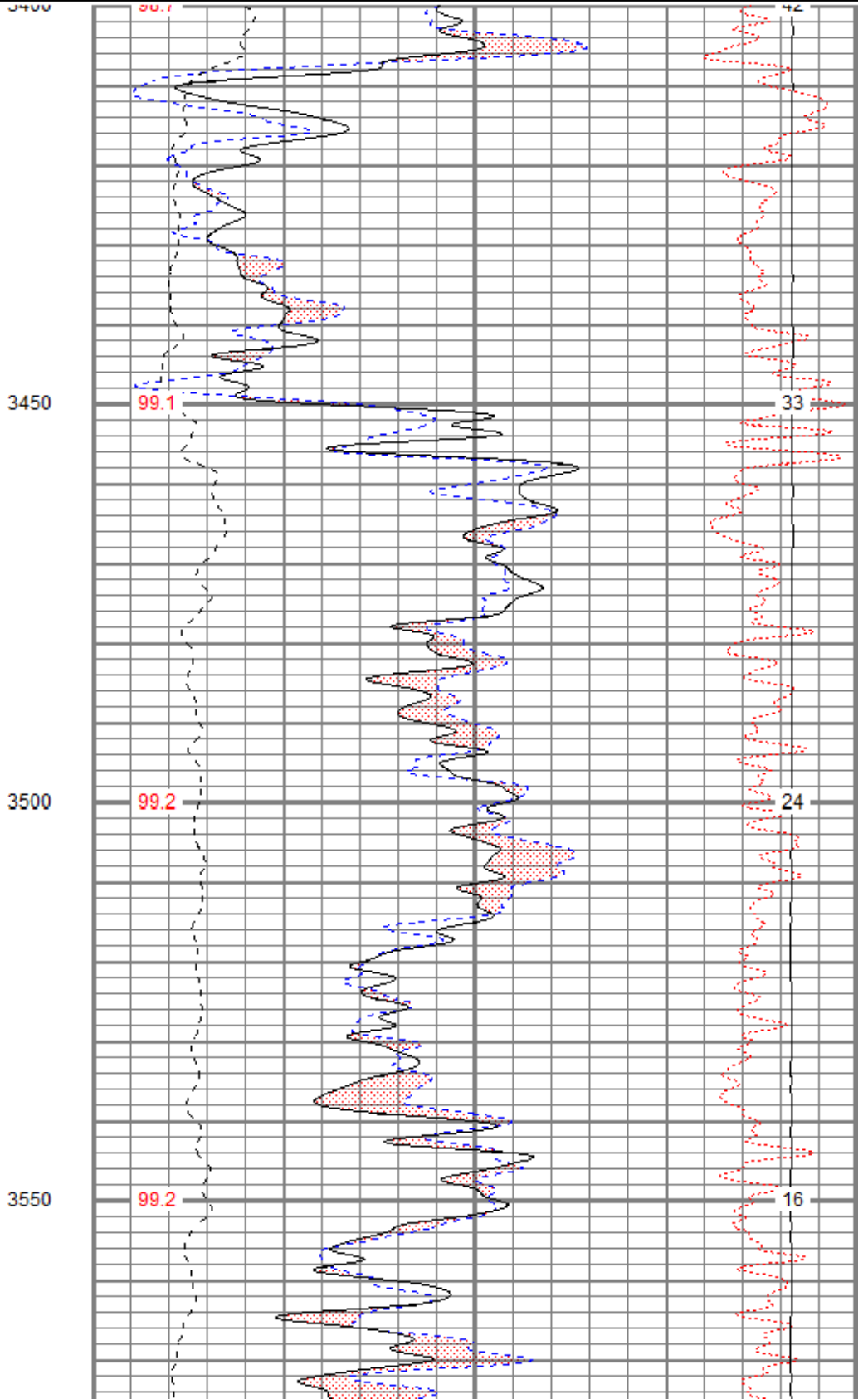
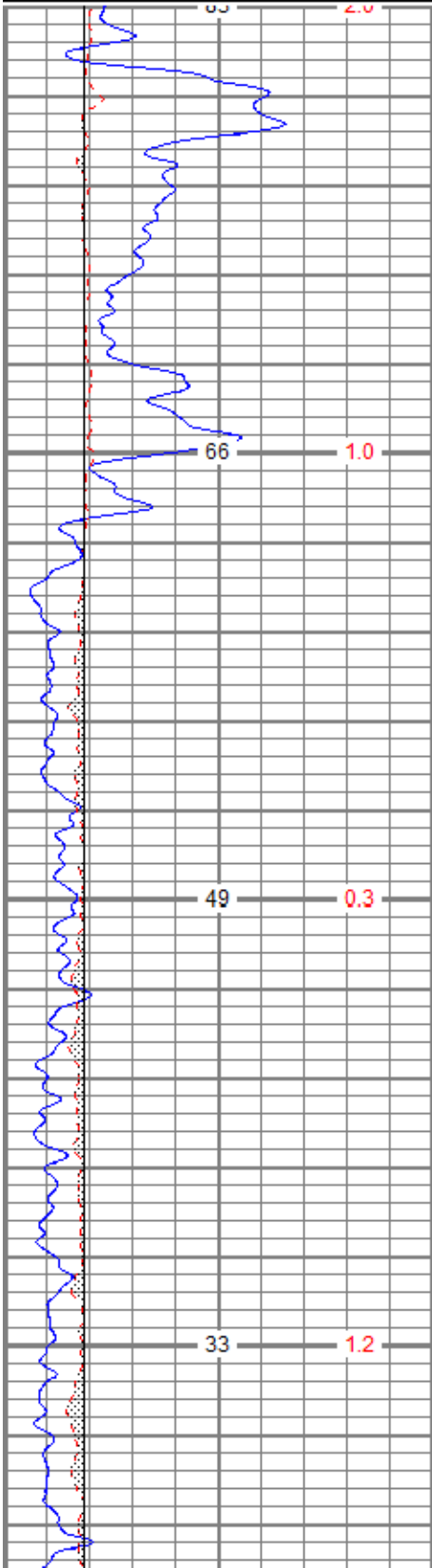


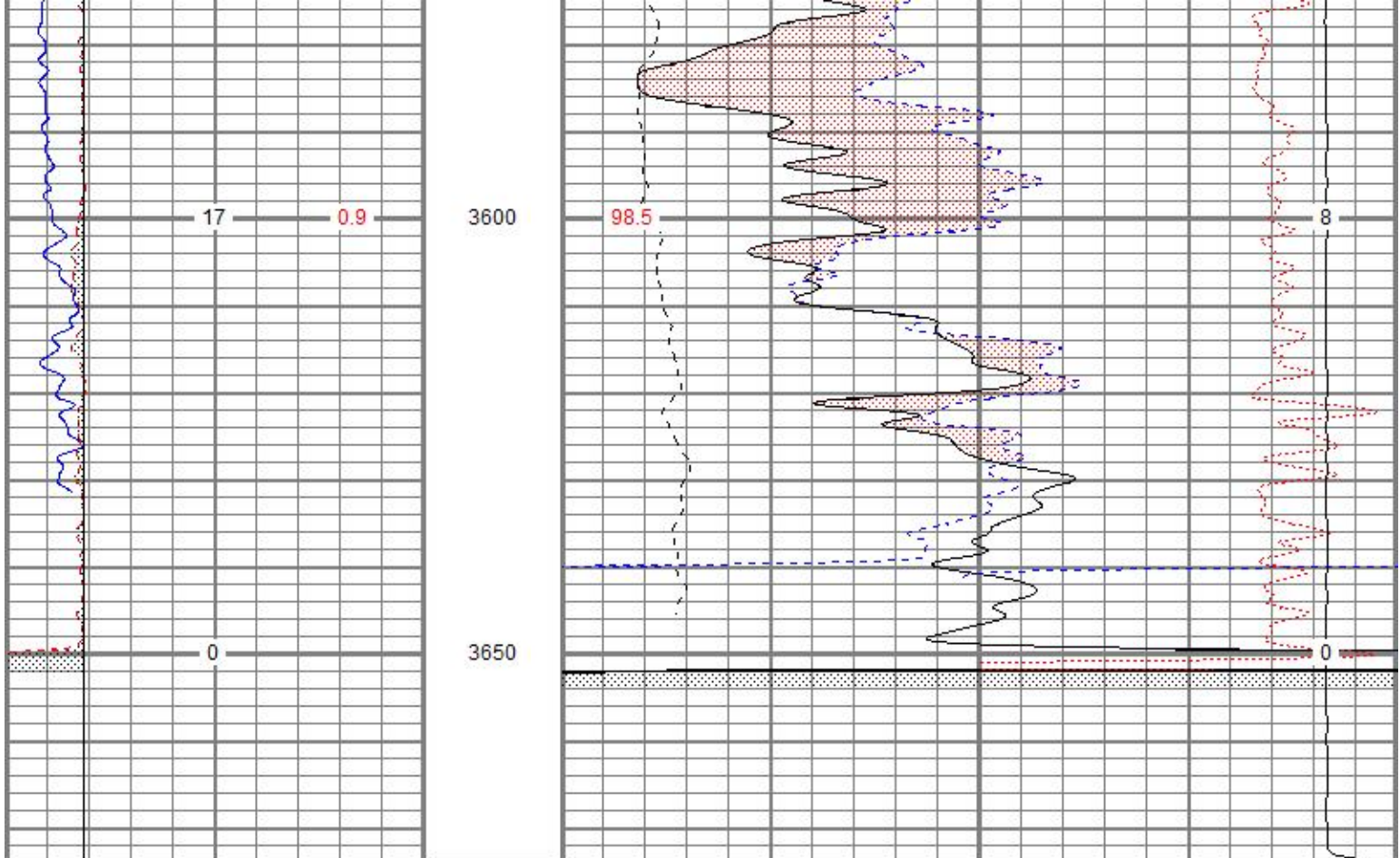
# DOLOMITE MATRIX

Database File brexlebow#11oh.db  
 Dataset Pathname pass3.2  
 Presentation Format digital\_kcdnl  
 Dataset Creation Thu Dec 06 12:19:11 2018  
 Charted by Depth in Feet scaled 1:240

0	GR (GAPI)	150
6	DCAL (in)	16
6	BOREID (in)	16
	TBHV (ft3)	DEVI (deg)

30	NPOR (pu)	-10			
30	DPOR (pu)	-10			
70	DPOR (pu)	30			
0	Pe (barn)	10	-0.25	RHOC (g/cc)	0.25
	TEMP (degF)	8000	LTEN (lb)	0	
					ABHV (ft3)





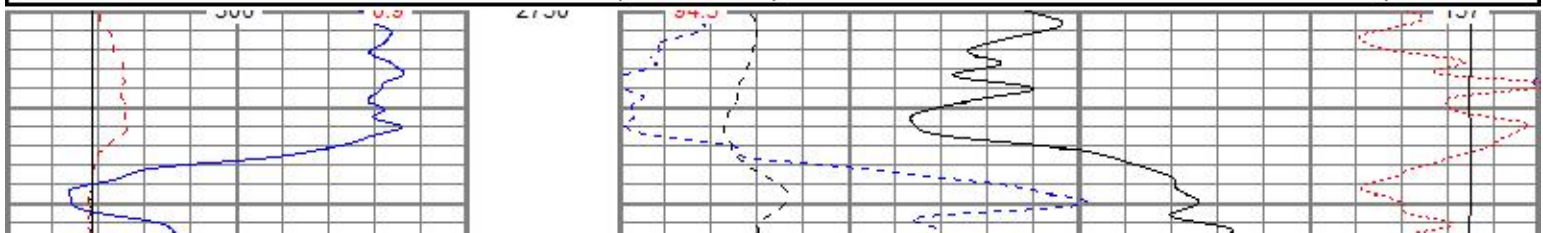
0	GR (GAPI)	150	30	NPOR (pu)	-10
6	DCAL (in)	16	30	DPOR (pu)	-10
6	BOREID (in)	16	70	DPOR (pu)	30
	TBHV (ft3)	DEVI (deg)	0	Pe (barn)	10 -0.25
			TEMP (degF)	8000	RHOC (g/cc) 0.25
					LTEN (lb) 0
					ABHV (ft3)

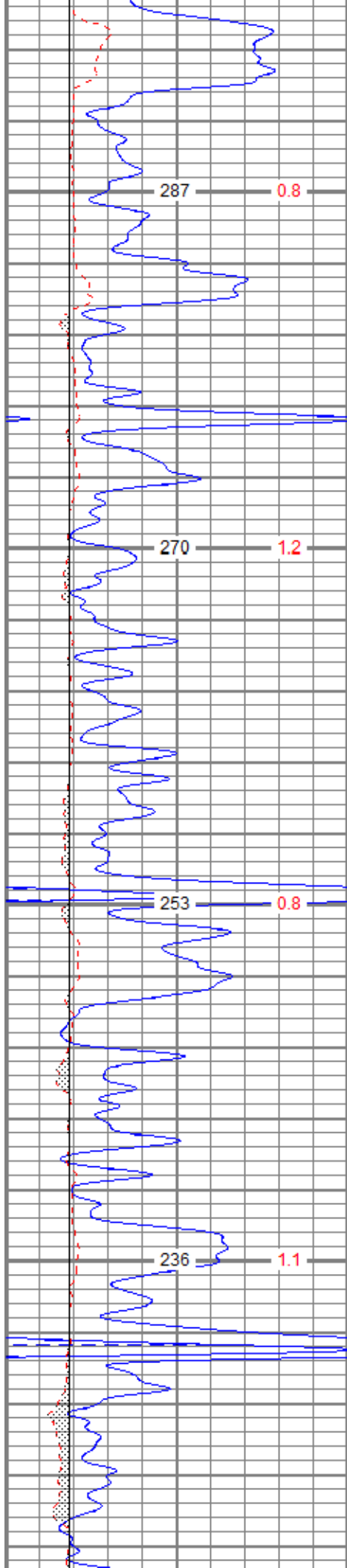


# MAIN PASS

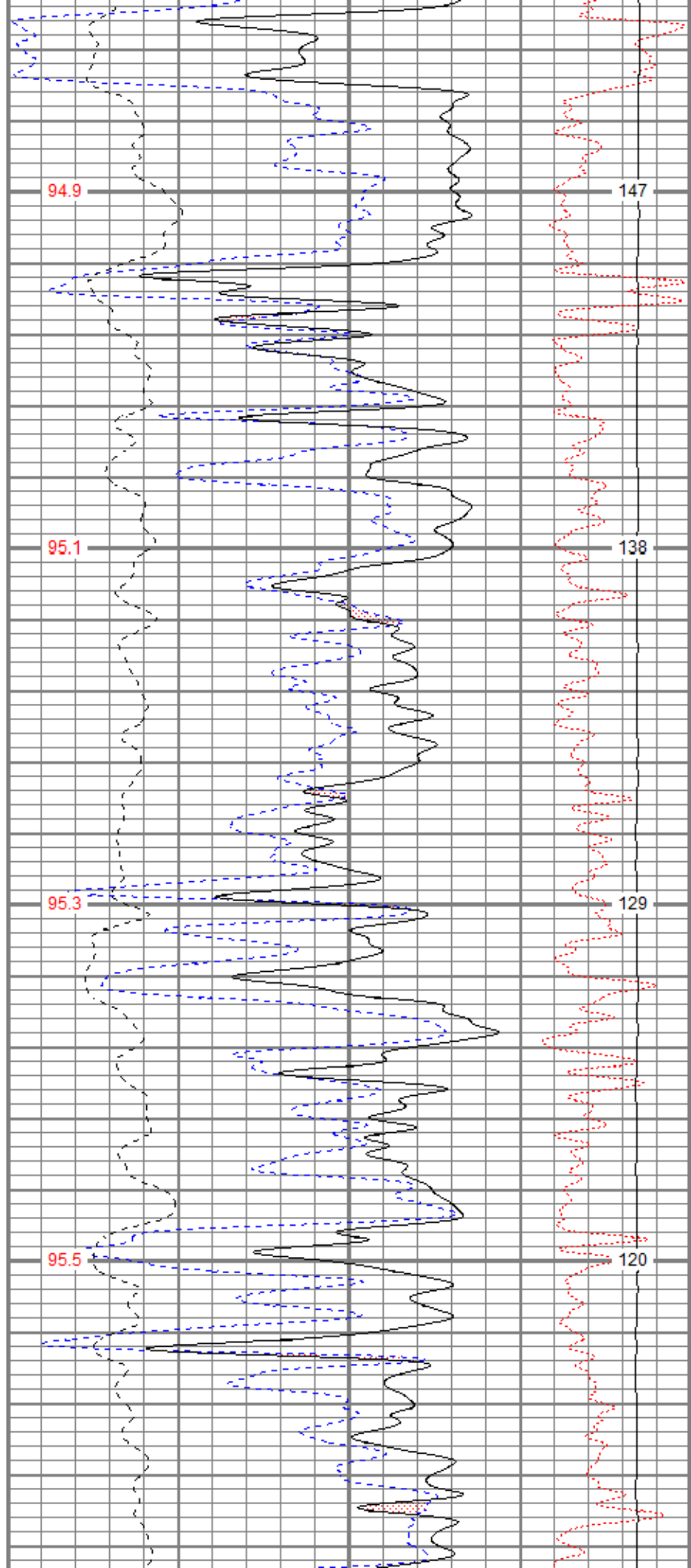
Database File: brexlebow#11oh.db  
 Dataset Pathname: pass3.1  
 Presentation Format: digital\_kcdnl  
 Dataset Creation: Thu Dec 06 09:33:13 2018  
 Charted by: Depth in Feet scaled 1:240

0	GR (GAPI)	150	30	NPOR (pu)	-10
6	DCAL (in)	16	30	DPOR (pu)	-10
6	BOREID (in)	16	70	DPOR (pu)	30
	TBHV (ft3)	DEVI (deg)	0	Pe (barn)	10 -0.25
			TEMP (degF)	8000	RHOC (g/cc) 0.25
					LTEN (lb) 0
					ABHV (ft3)





2800

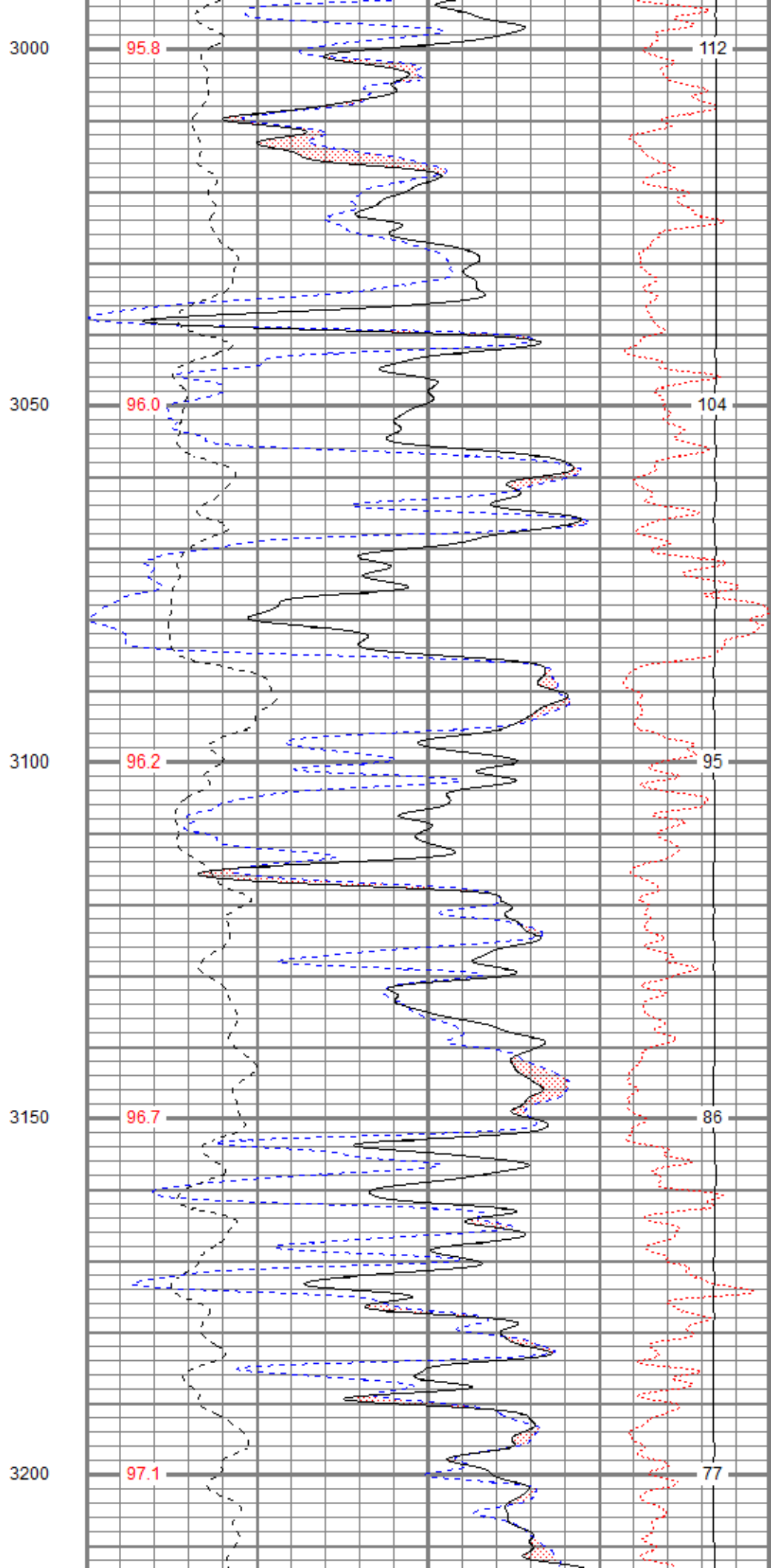
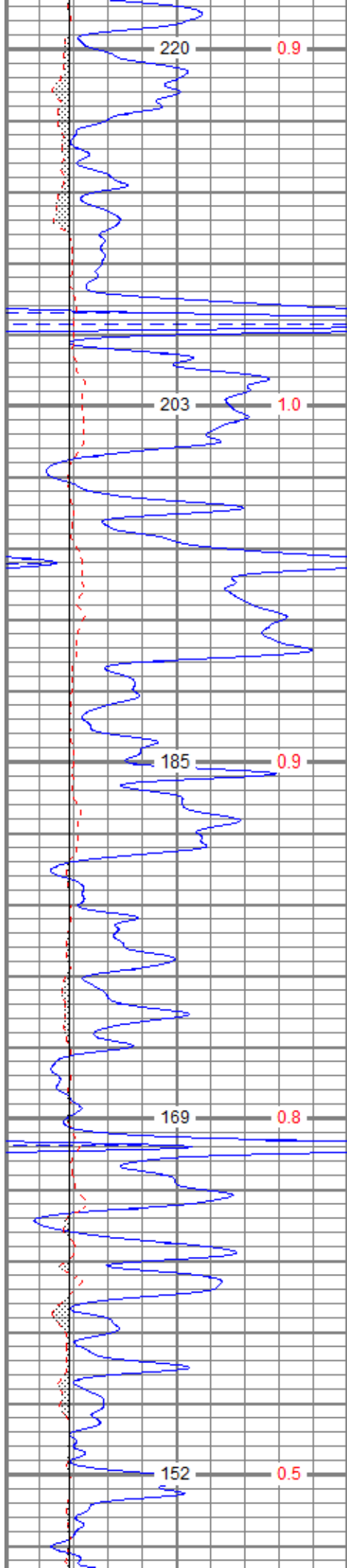


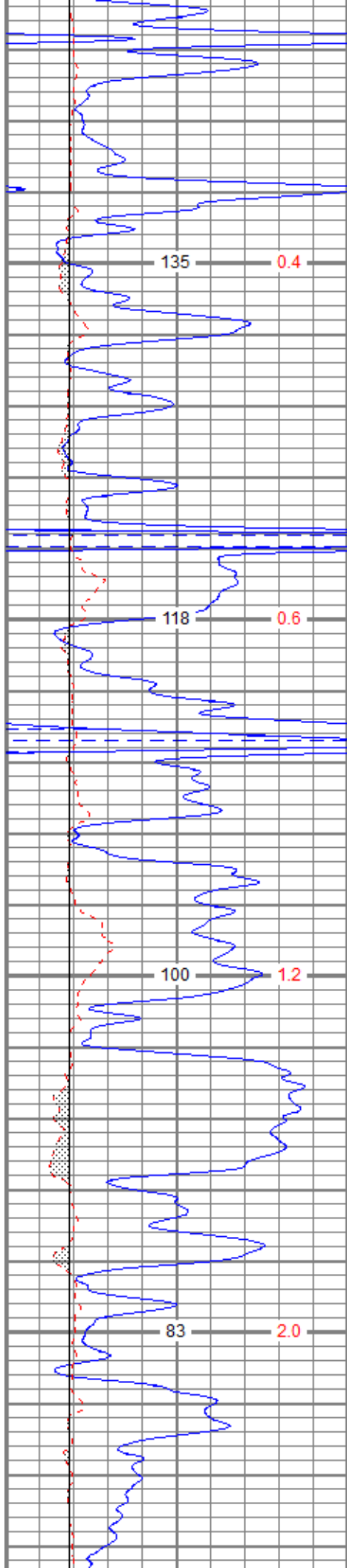
147

138

129

120





3250

97.3

69

3300

97.5

60

3350

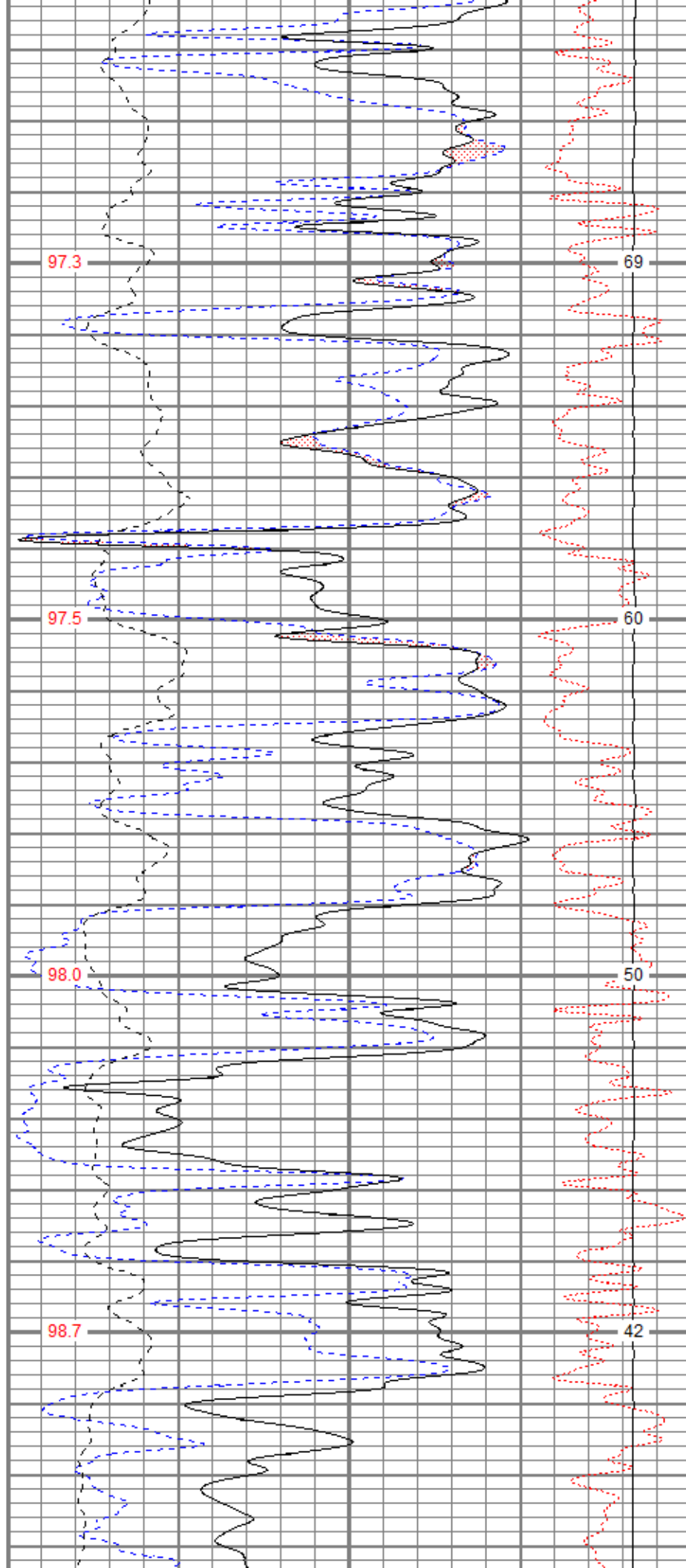
98.0

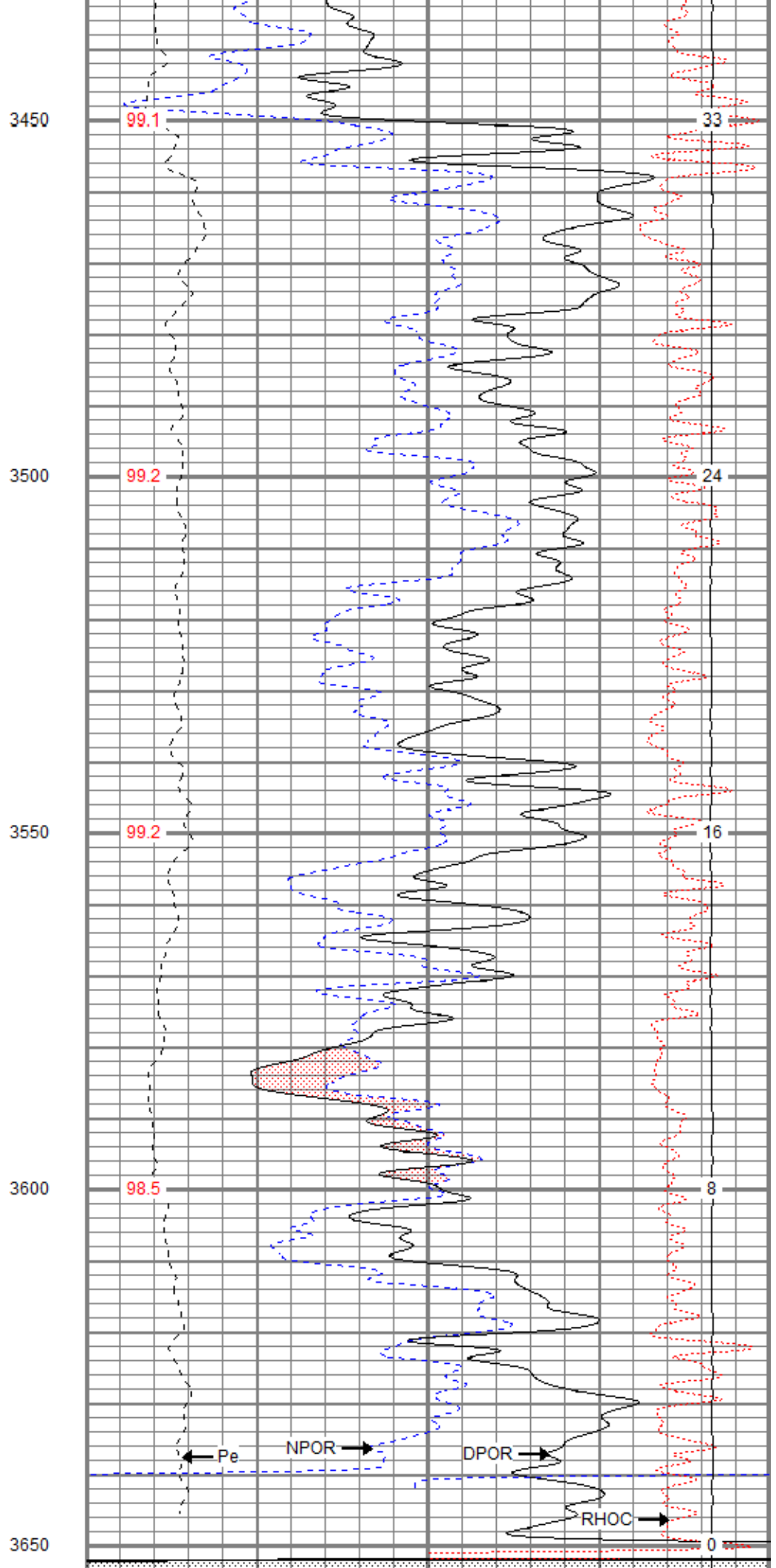
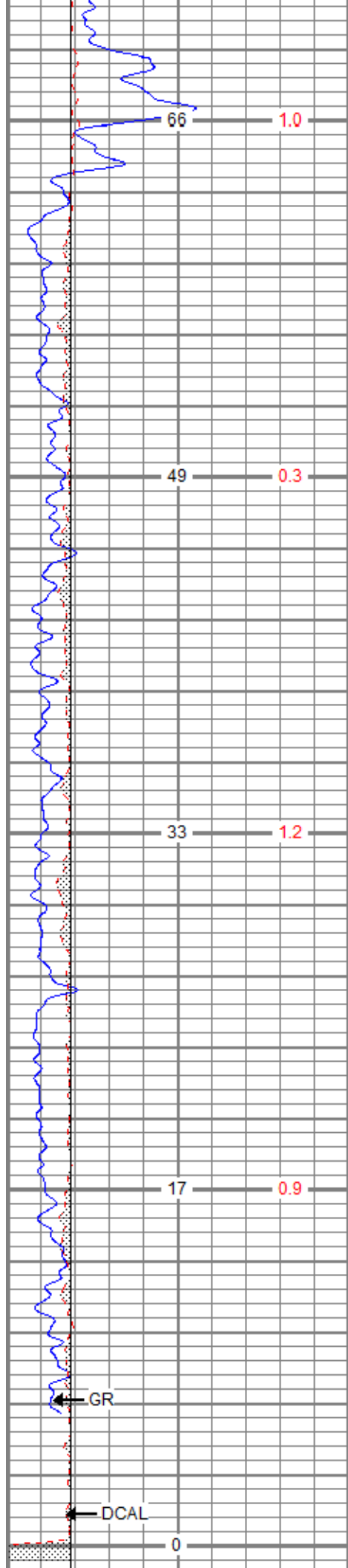
50

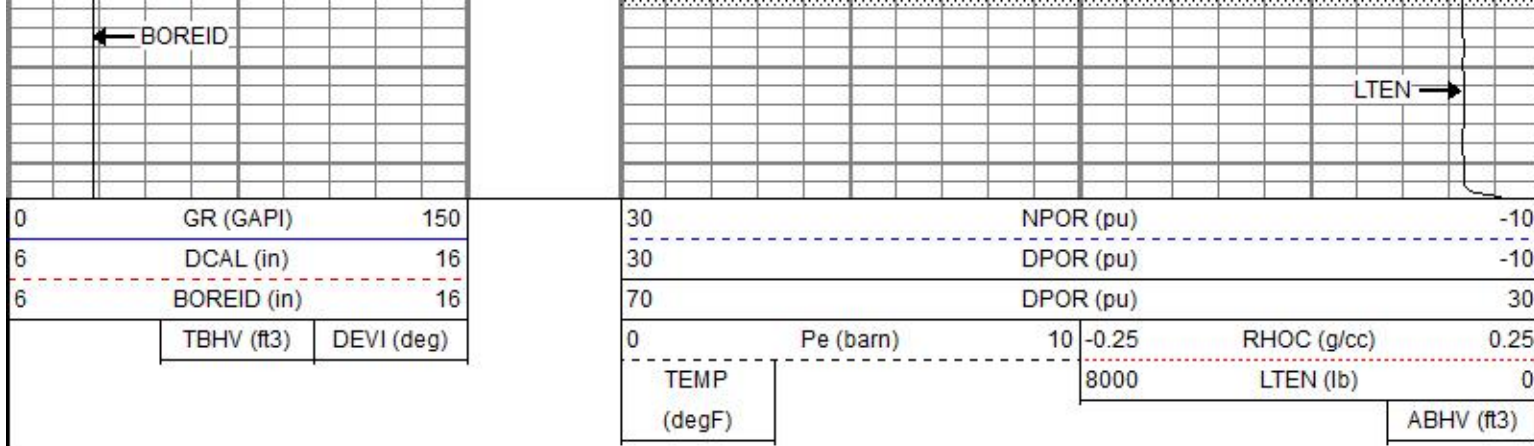
3400

98.7

42

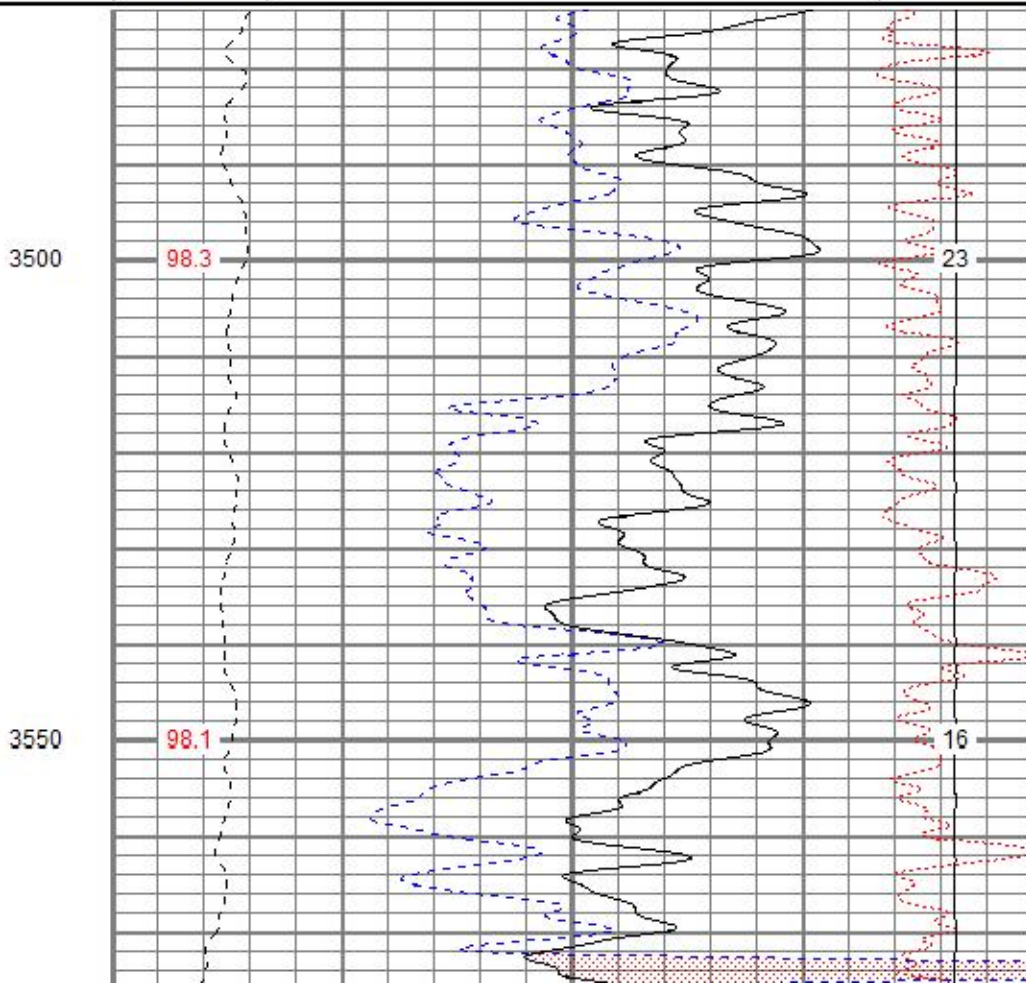
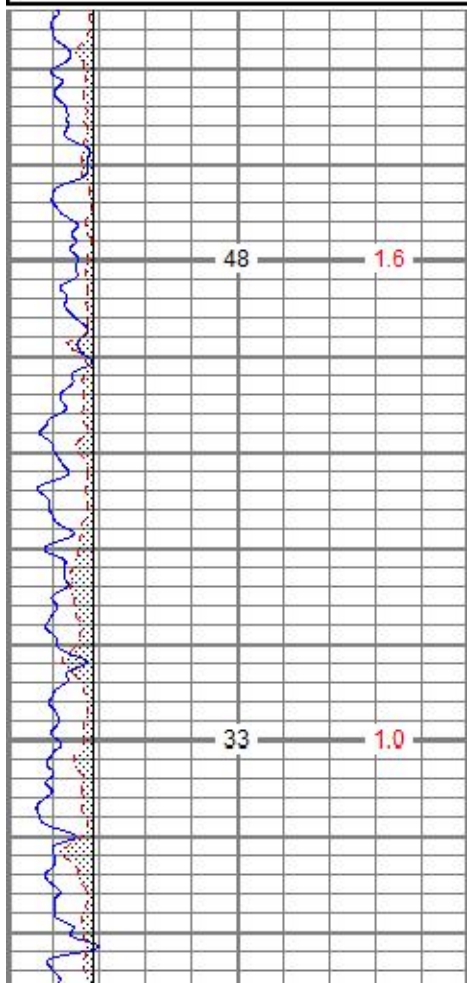
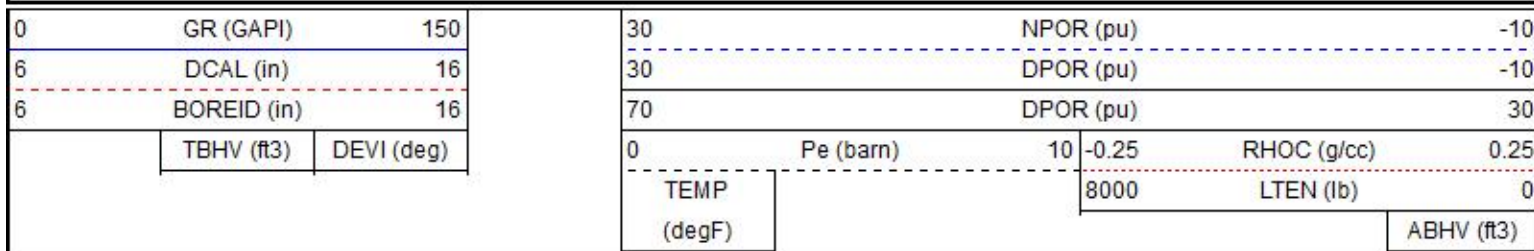






# REPEAT SECTION

Database File: brexlebow#11oh.db  
 Dataset Pathname: pass2.1  
 Presentation Format: digital\_kcdnl  
 Dataset Creation: Thu Dec 06 08:52:41 2018  
 Charted by: Depth in Feet scaled 1:240





Internal:	Zero	Cal		Zero	Cal		m	b
Deep	0.145	350.239	mmho/m	-0.044	350.323	mmho/m	1.001	-0.189
Medium	0.435	400.472	mmho/m	-0.037	400.340	mmho/m	1.001	-0.473
Shallow	2.440	0.018	V	500.000	2.000	Ohm-m	205.554	0.825

After Survey Verification

Readings			Targets			Results		
Internal:	Zero	Cal		Zero	Cal		m'	b'
Deep	0.000	0.000	mmho/m	0.145	350.239	mmho/m	1.001	-0.189
Medium	0.000	0.000	mmho/m	0.435	400.472	mmho/m	1.001	-0.473
Shallow	0.000	0.000	Ohm-m	500.000	2.000	Ohm-m	1.000	0.000

Neutron Calibration Report			
Serial Number:	2017		
Tool Model:	lithogearhart		
Performed:	(Not Performed)		
Calibrator Value:	1	NAPI	
Calibrator Reading:	1	cps	
Sensitivity:	1	NAPI/cps	

Temperature Calibration Report					
Serial Number:	WithMC				
Tool Model:	WMC				
Performed:	Wed Dec 05 04:54:01 2018				
	Reference			Reading	
Low Reference:	0.00	degF	0.00	degF	
High Reference:	1.00	degF	1.00	degF	
Gain:	1.00				
Offset:	0.00				
Delta Spacing	1				

Inclinometer Calibration Report					
Performed:	Wed Dec 05 04:53:48 2018				
	Low Read.	High Read.	Low Ref.	High Ref.	
X Accelerometer	205.00	1843.00	-1.00	1.00	gee
Y Accelerometer	205.00	1843.00	-1.00	1.00	gee
Z Accelerometer					gee

Gamma Ray Calibration Report			
Serial Number:	WithMC		
Tool Model:	WMC		
Performed:	Wed Dec 05 04:58:30 2018		
Calibrator Value:	1.0	GAPI	
Background Reading:	0.0	cps	
Calibrator Reading:	1.0	cps	
Sensitivity:	1.0000	GAPI/cps	

Sensor	Offset (ft)	Schematic	Description	Length (ft)	O.D. (in)	Weight (lb)
GR	40.07		CHD-STD	0.50	1.69	1.00
ACCY	38.91		ADT-WMC (WithMC) Admyr Telemetry With Mudcell	4.58	3.50	120.00
ACCX	38.91					
SSTAT	38.49		NEU-lithogearhart (2017)	5.65	3.50	85.00
PSTAT	37.66					
ASTAT	37.66		ADT1LITH-A (1) Admyr Litho Density Tool	9.29	3.50	240.00
GRD	36.82					
TEMP	36.82					
NEU	33.46					
LStat	24.30					
LS8	23.64					
LS7	23.64					
LS6	23.64					
LS5	23.64					
LS4	23.64					
LS3	23.64		DIL-G (5375) Gearhart	21.47	4.00	345.00
LS2	23.64					
LS1	23.64					
LSV	23.64					
LSD	23.62					
SSV	23.43					
SS8	23.43					
SS7	23.43					
SS6	23.43					
SS5	23.43					
SS4	23.43					
SS3	23.43					
SS2	23.43					
SS1	23.43					
DCAL	23.37		RLL3	1.70	4.00	345.00
SSD	23.04					
SP	10.60					
CILD	10.60		TR_Mon	0.00	4.00	345.00
CILM	6.89					
		Dataset:	brexlebow#11oh.db: field/well/run1/pass3.1			
		Total length:	41.49 ft			
		Total weight:	791.00 lb			
		O.D.:	4.00 in			