



**DUAL
INDUCTION
LOG**

Company Berexco, LLC
Well Lebow #11
Field Fairport
County Russell
State KS

Company Berexco, LLC
Well Lebow #11
Field Fairport
County Russell State KS

Location: API #: 15 167 24085
660' FNL & 660' FWL
C-NW-NW
SEC 9 TWP 11S RGE 15W
Permanent Datum Ground Level Elevation 1953'
Log Measured From KB 7' AGL
Drilling Measured From KB
Other Services
ML
CDNL
BCS
Elevation
K.B. 1960'
D.F. 1959'
G.L. 1953'

Date	12-6-18
Run Number	One
Depth Driller	3675'
Depth Logger	3674'
Bottom Logged Interval	3672'
Top Log Interval	280'
Casing Driller	8 5/8" @ 296'
Casing Logger	296'
Bit Size	7 7/8"
Type Fluid in Hole	Chemical Mud
Density / Viscosity	9.3/57
PH / Fluid Loss	9.0/8.8
Source of Sample	Pit
Rm @ Meas. Temp	2.1@66degf
Rmf @ Meas. Temp	1.58@66degf
Rmc @ Meas. Temp	2.52@66degf
Source of Rmf / Rmc	Calculated
Rm @ BHT	1.4@99degf
Time Circulation Stopped	5:00 a.m
Time Logger on Bottom	7:34 a.m
Maximum Recorded Temperature	99degf
Equipment Number	T-127
Location	Hays, KS.
Recorded By	C.Patterson
Witnessed By	Mr. Jerry Smith

<<< Fold Here >>>

All interpretations are opinions based on inferences from electrical or other measurements and we cannot and do not guarantee the accuracy or correctness of any interpretation, and we shall not, except in the case of gross or willful negligence on our part, be liable or responsible for any loss, costs, damages, or expenses incurred or sustained by anyone resulting from any interpretation made by any of our officers, agents or employees. These interpretations are also subject to our general terms and conditions set out in our current Price Schedule.

Comments

Paradise,KS Hwy 18 Turn south on 2nd St then immediately West on Waldo St for 1/10 mi.
Slight South on Main St then Back West(turn by house) on Waldo Rd. for .7 mi (comes to Y)
Left Heading West to South on waldo St for 2.9 mi., Slightly West onto Luray St for 1.7 mi. to 177th St
North on 177th St. 0.6 mi.,East Through Cattle Guard then East to North down Existing Lease Rd
into Location
into Location

Thank you for using Gemini Wireline
785-625-1182



MAIN PASS

Database File brexlebow#11oh.db
 Dataset Pathname pass3.1
 Presentation Format kdillinn
 Dataset Creation Thu Dec 06 09:33:13 2018
 Charted by Depth in Feet scaled 1:600

0 GR (GAPI) 150

1000 CILD (mmho/m) 0

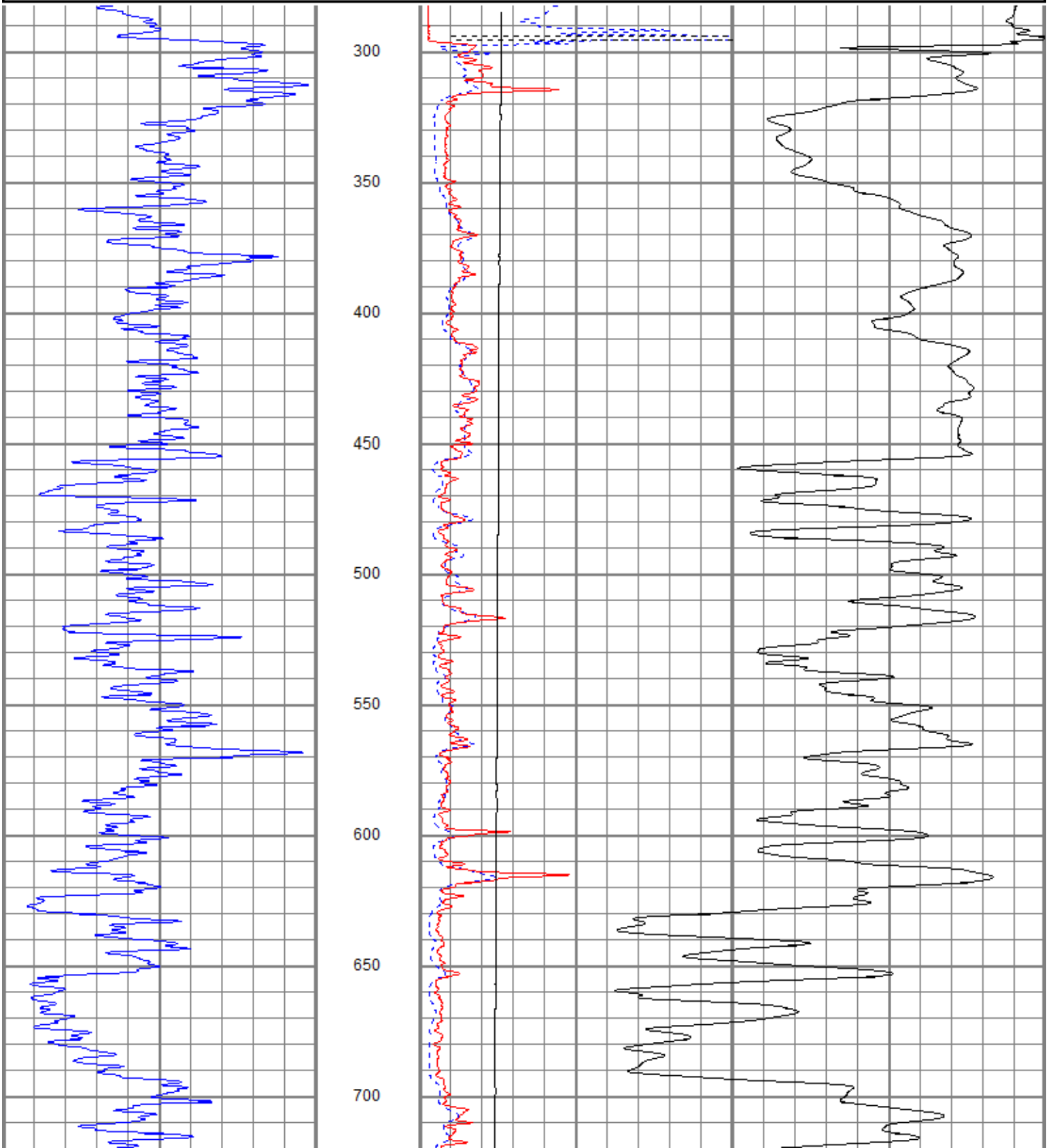
10000 LTEN (lb) 0

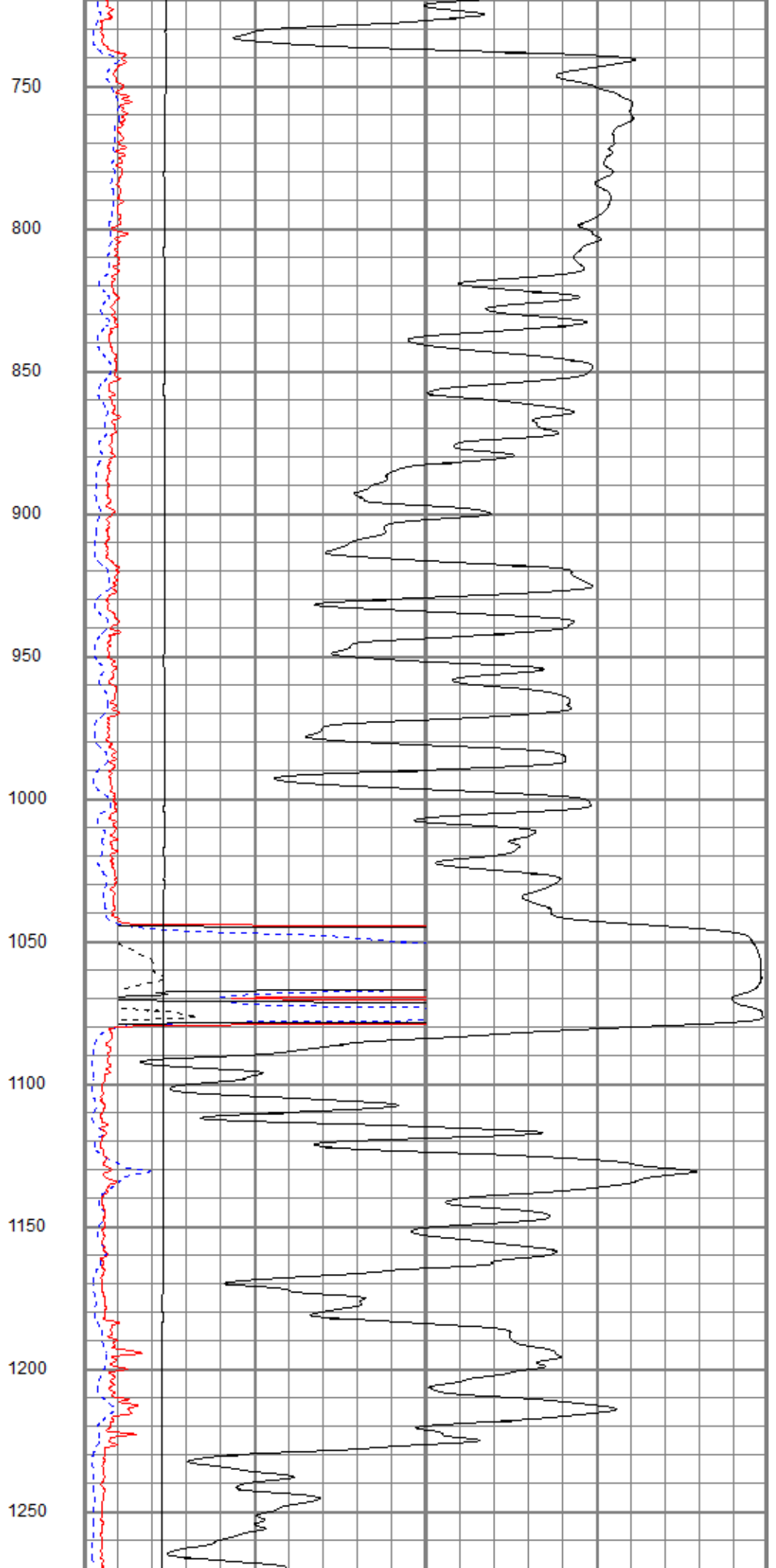
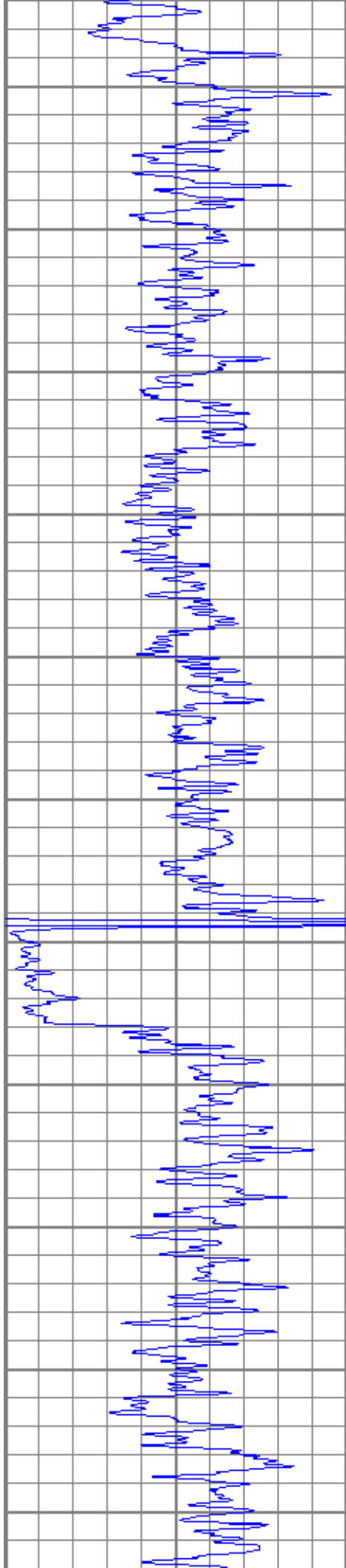
0 RILD (Ohm-m) 50

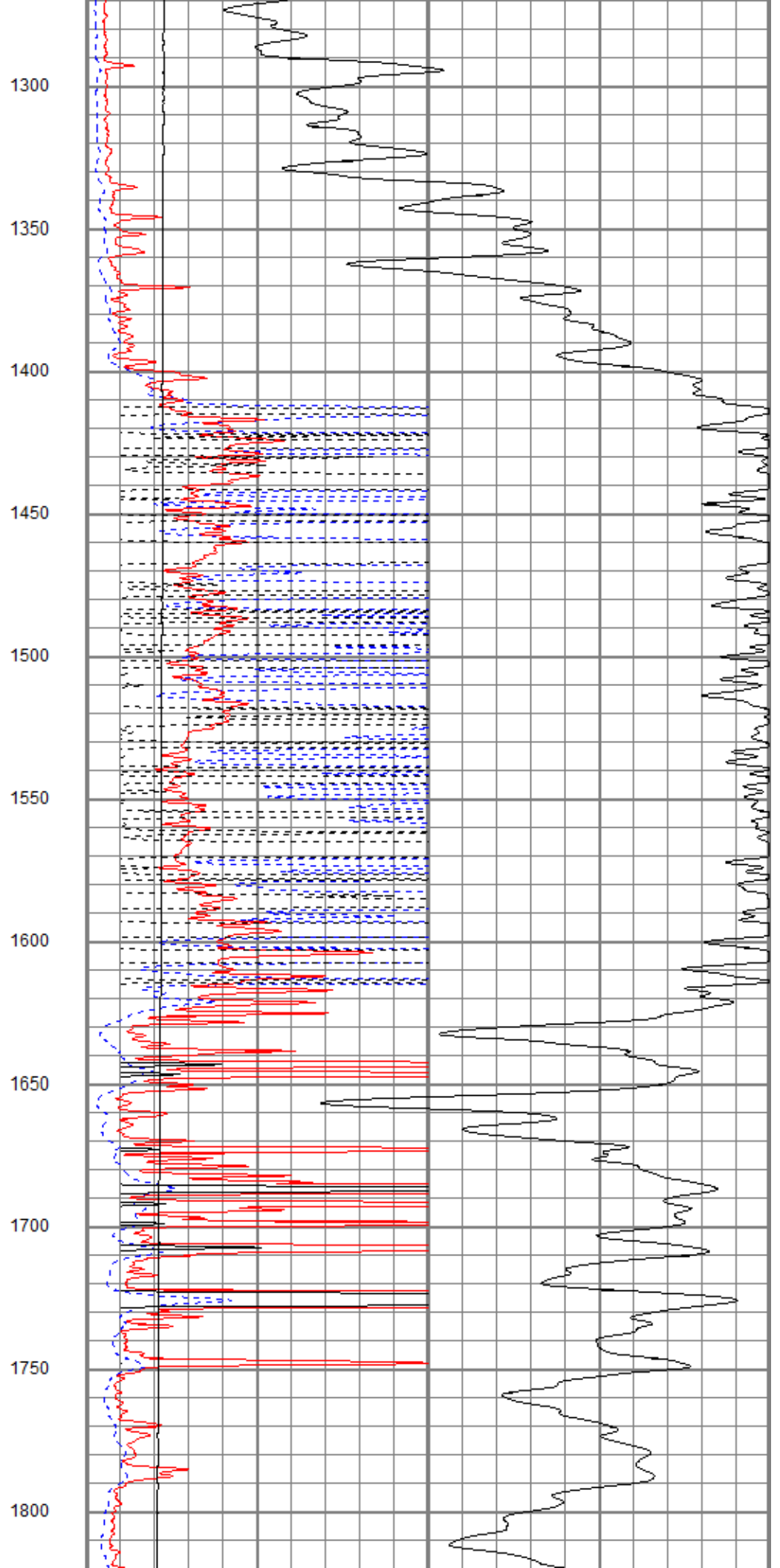
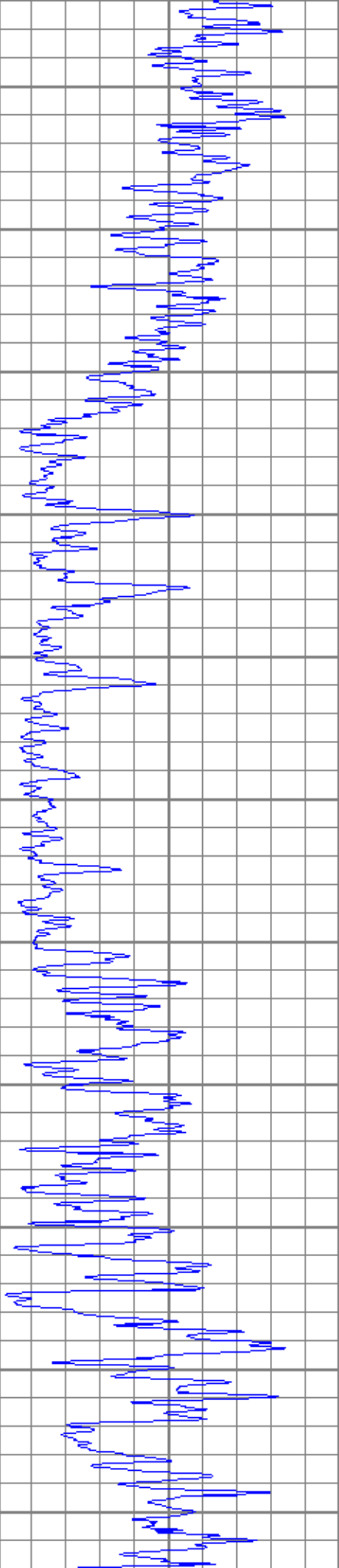
0 RLL3 (Ohm-m) 50

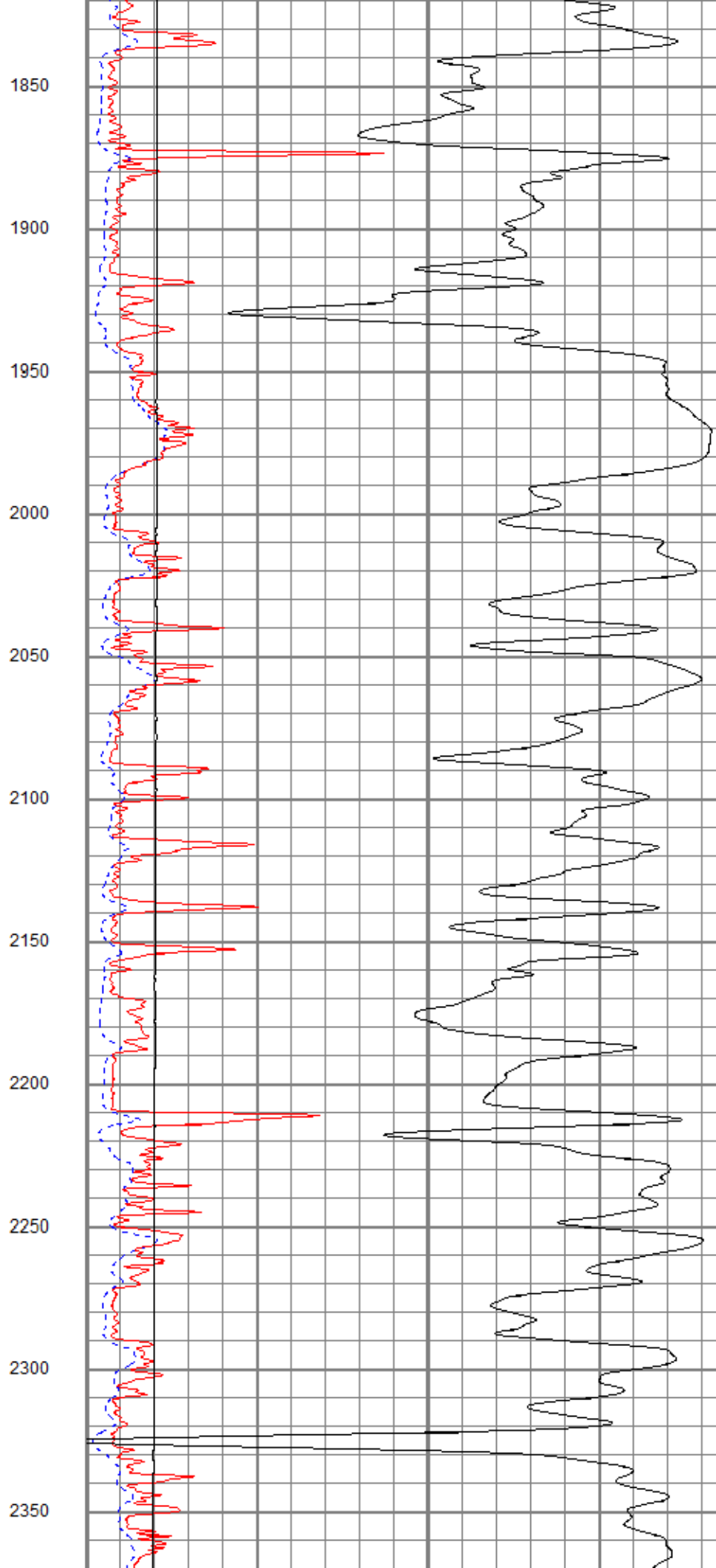
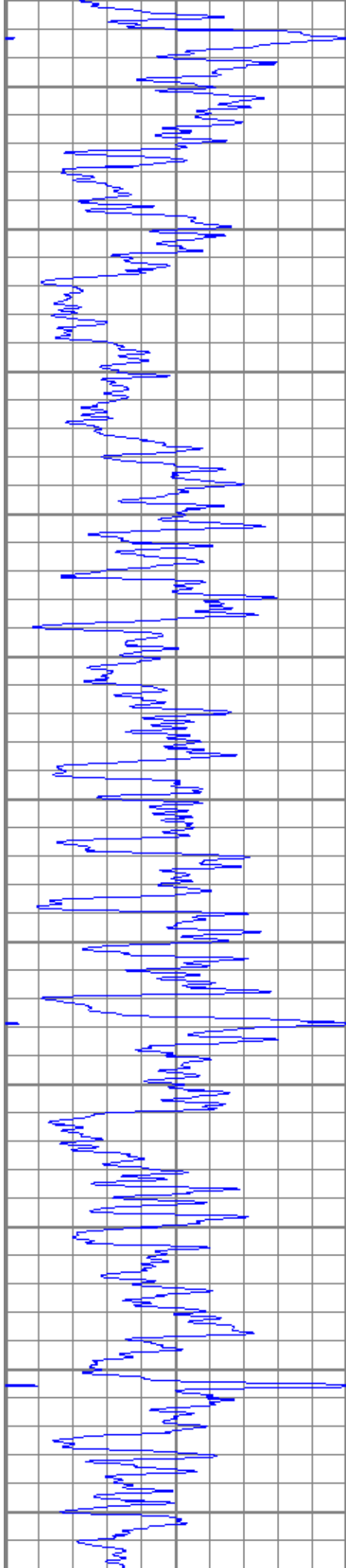
50 RILD x 10 (Ohm-m) 500

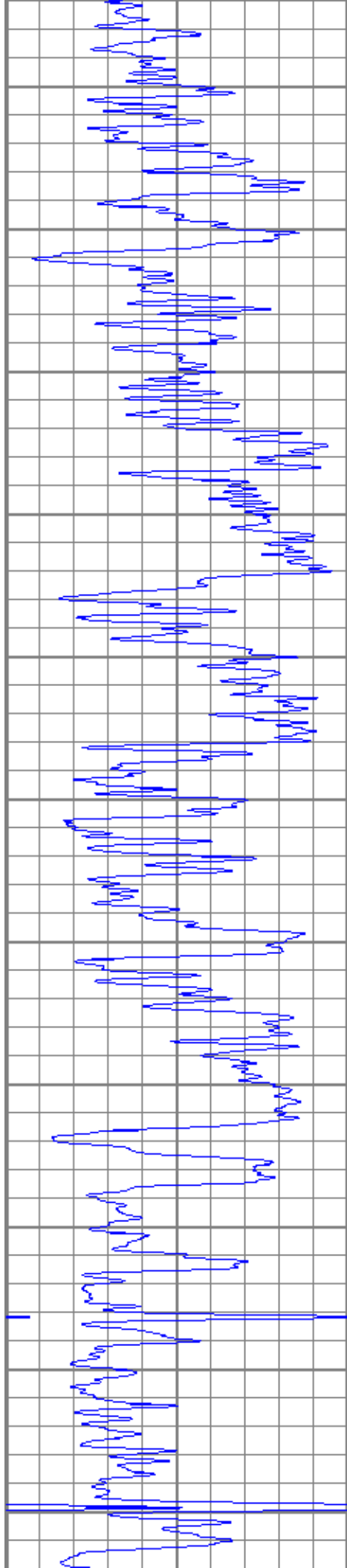
50 RLL3 x 10 (Ohm-m) 500



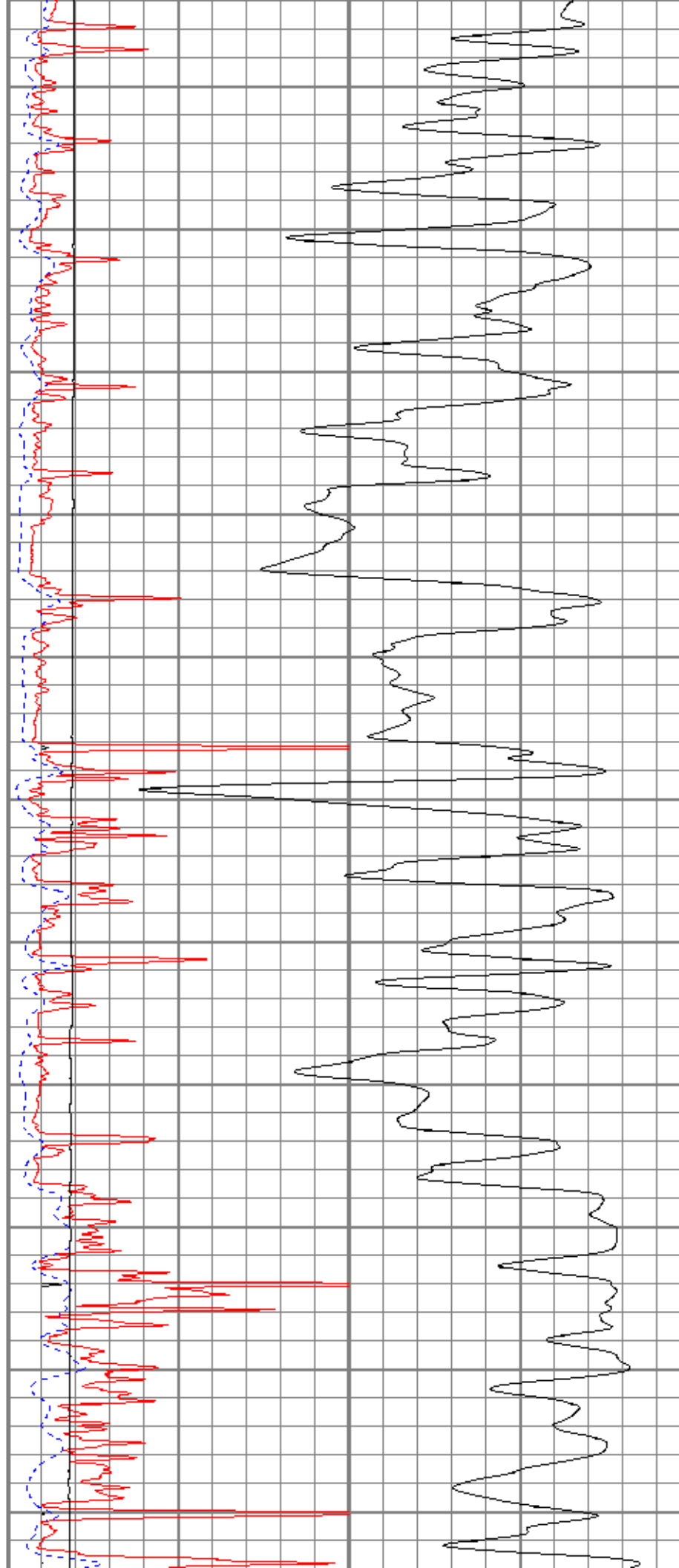


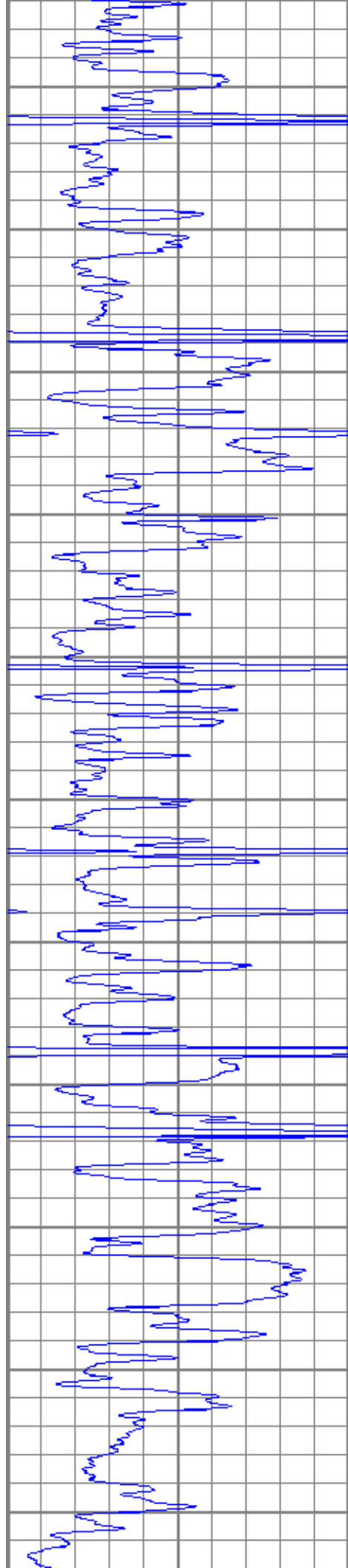






2400
2450
2500
2550
2600
2650
2700
2750
2800
2850
2900





2950

3000

3050

3100

3150

3200

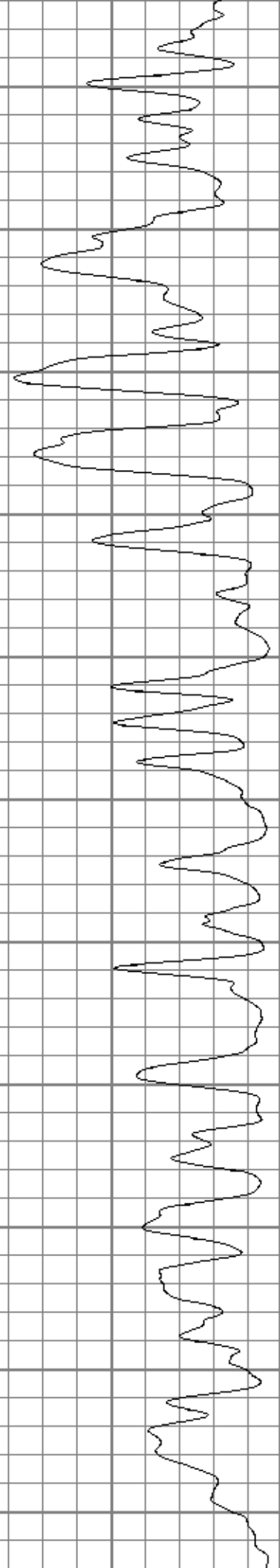
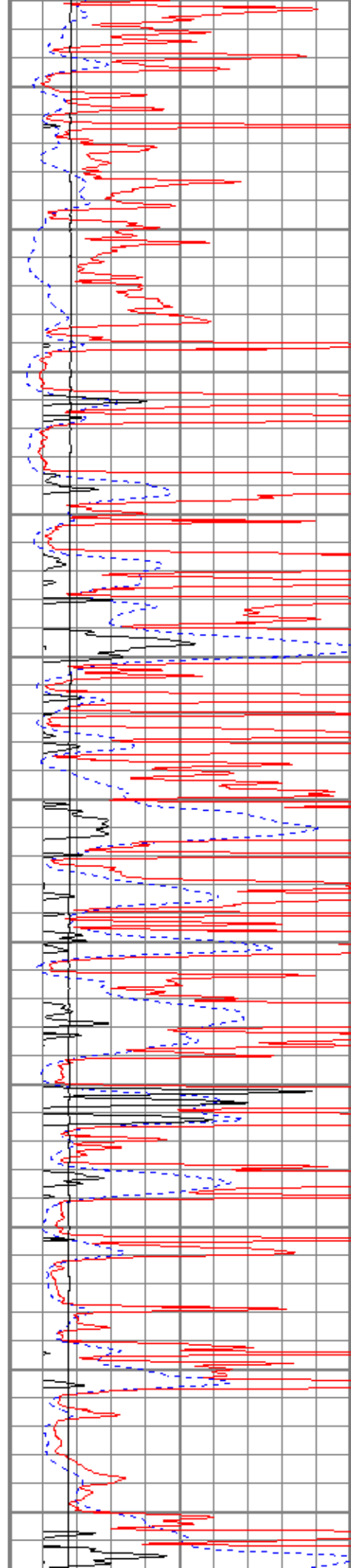
3250

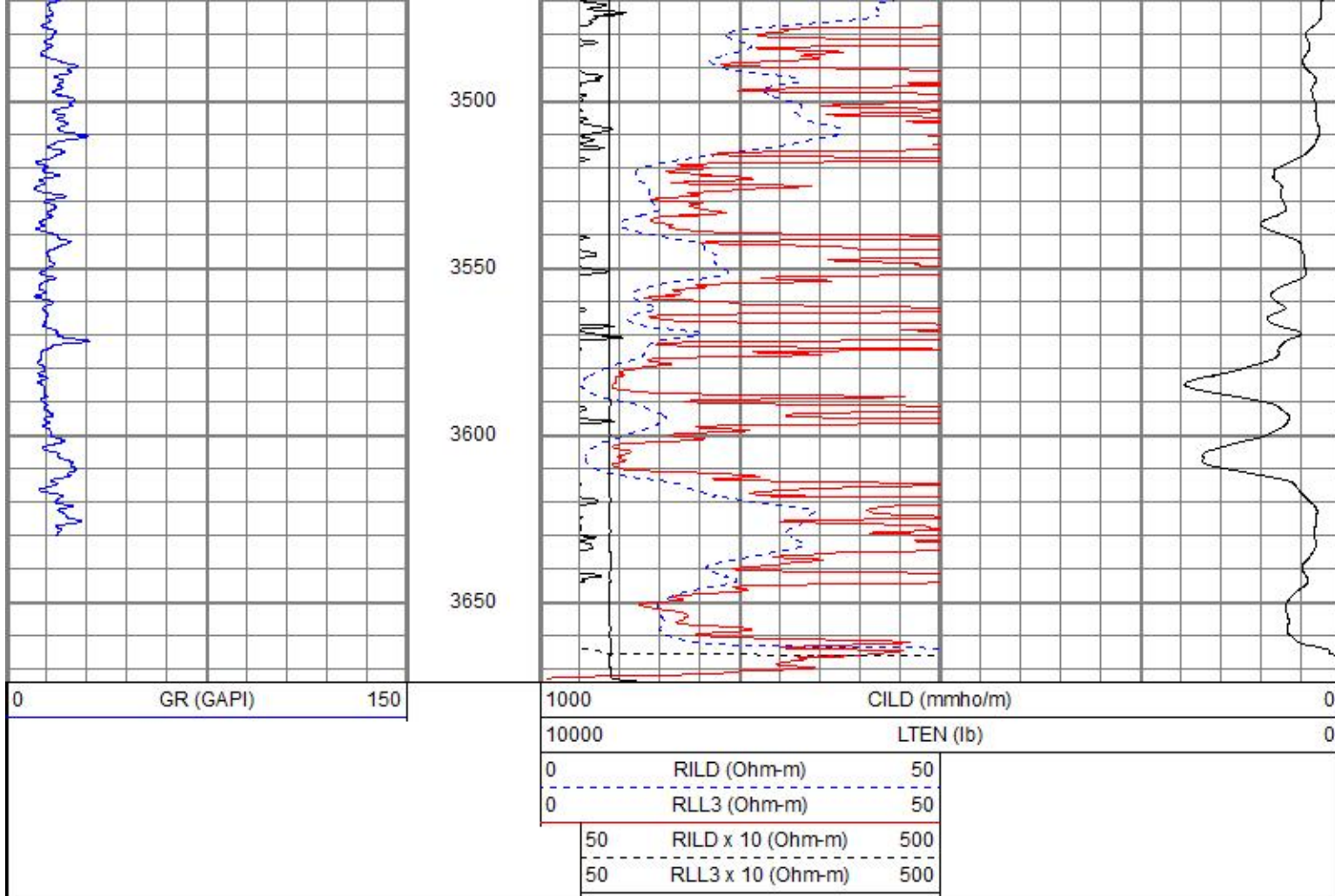
3300

3350

3400

3450



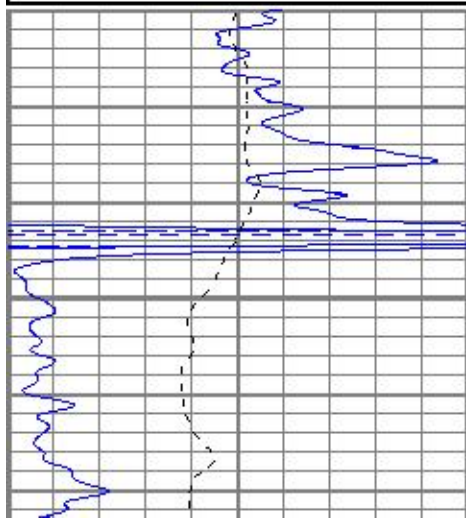


MAIN PASS

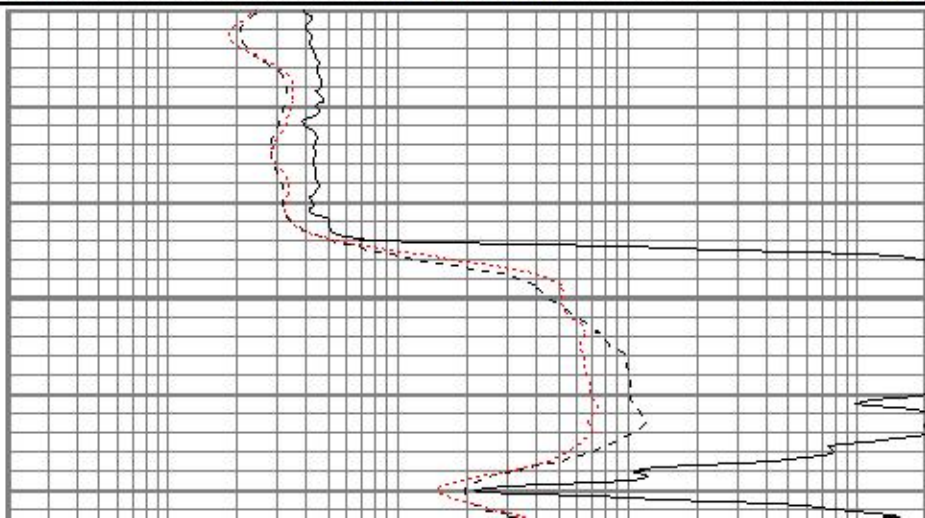
Database File brexlebow#11oh.db
 Dataset Pathname pass3.1
 Presentation Format kdil
 Dataset Creation Thu Dec 06 09:33:13 2018
 Charted by Depth in Feet scaled 1:240

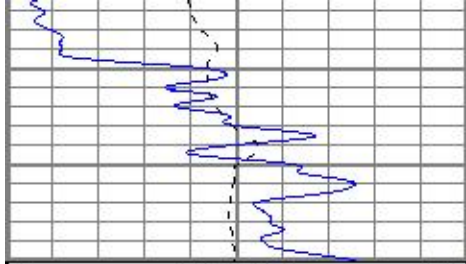
0	GR (GAPI)	150
-100	SP (mV)	100

0.2	RILD (Ohm-m)	2000
0.2	RLL3 (Ohm-m)	2000
0.2	RILM (Ohm-m)	2000



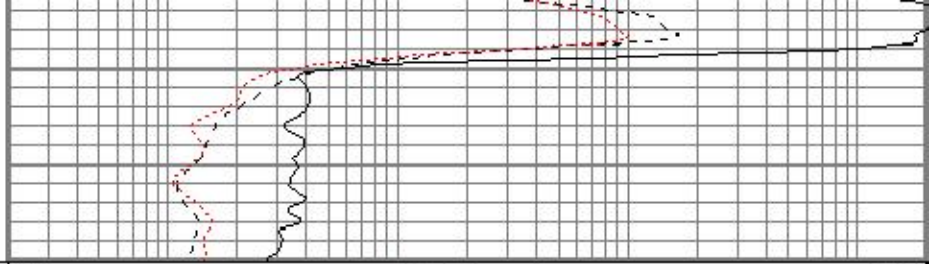
1050





0	GR (GAPI)	150
-100	SP (mV)	100

1100



0.2	RILD (Ohm-m)	2000
0.2	RLL3 (Ohm-m)	2000
0.2	RILM (Ohm-m)	2000

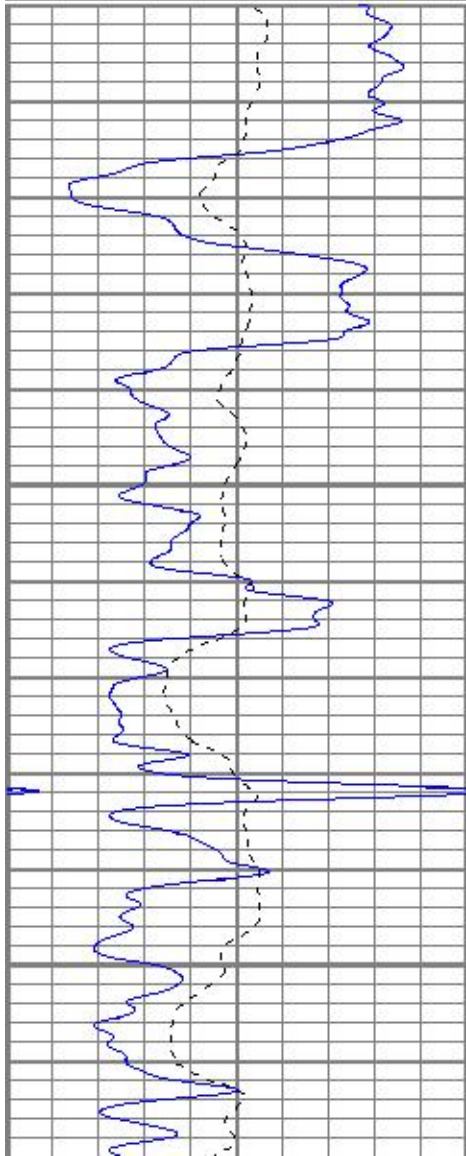


MAIN PASS

Database File brexlebow#11oh.db
 Dataset Pathname pass3.1
 Presentation Format kdil
 Dataset Creation Thu Dec 06 09:33:13 2018
 Charted by Depth in Feet scaled 1:240

0	GR (GAPI)	150
-100	SP (mV)	100

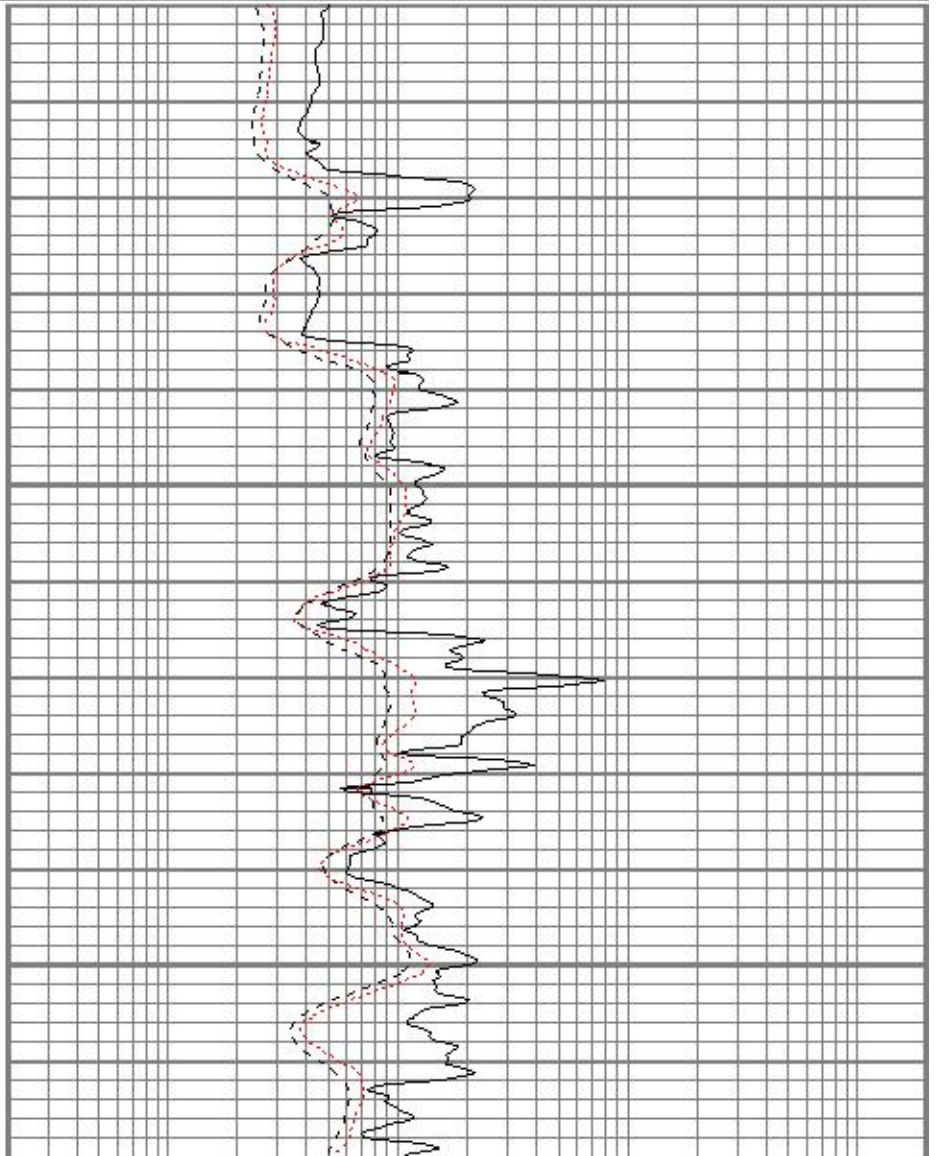
0.2	RILD (Ohm-m)	2000
0.2	RLL3 (Ohm-m)	2000
0.2	RILM (Ohm-m)	2000

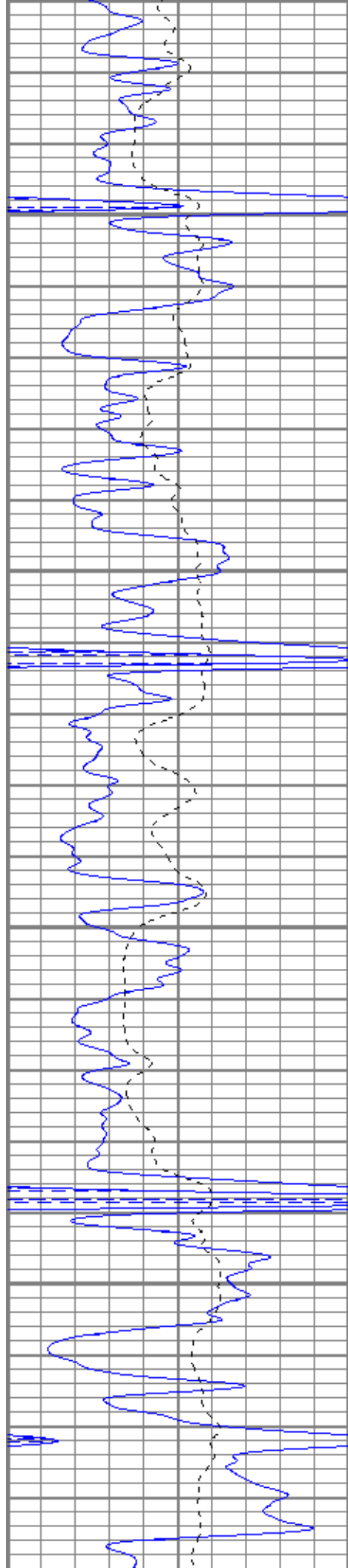


2750

2800

2850



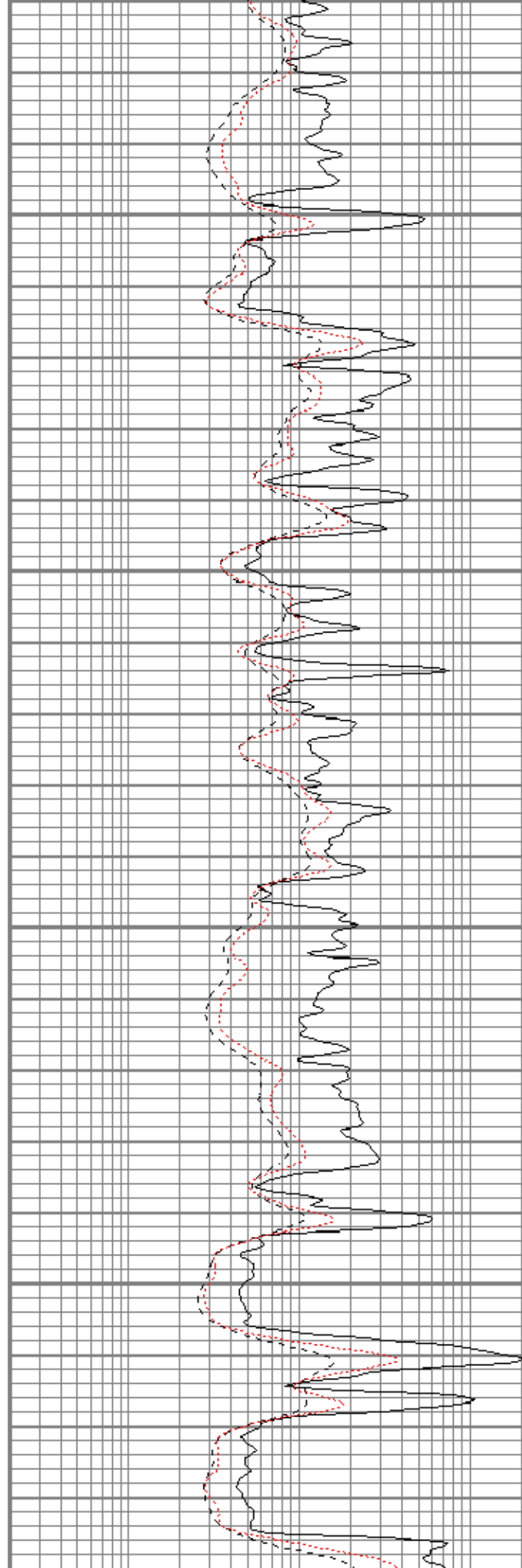


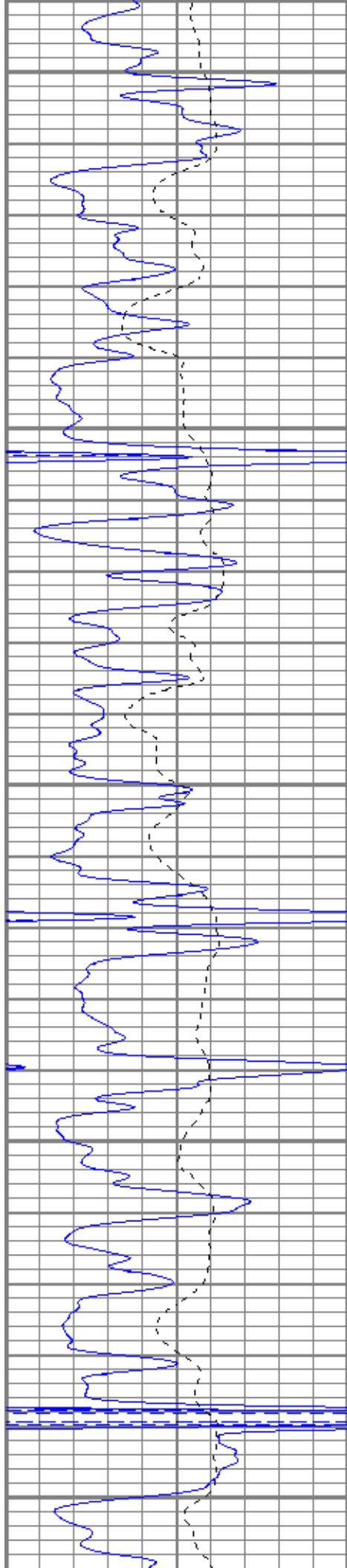
2900

2950

3000

3050





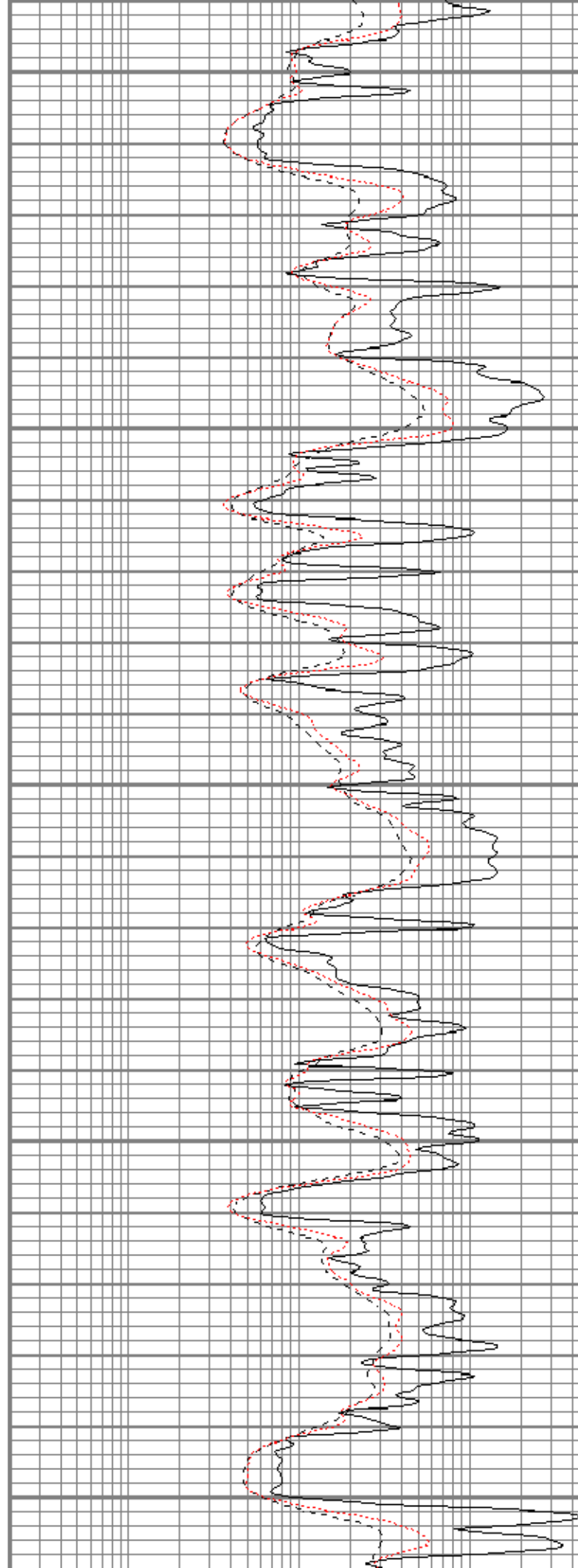
3100

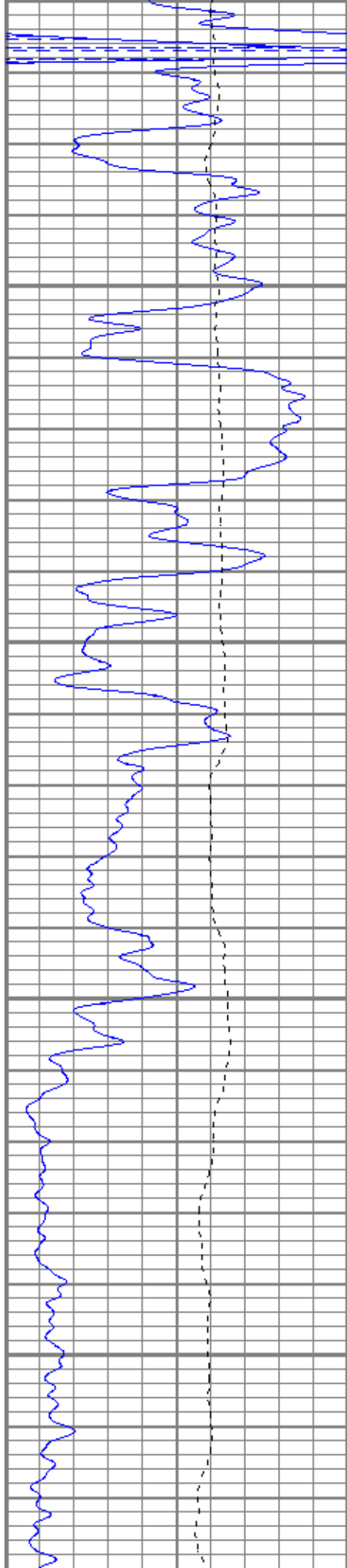
3150

3200

3250

3300



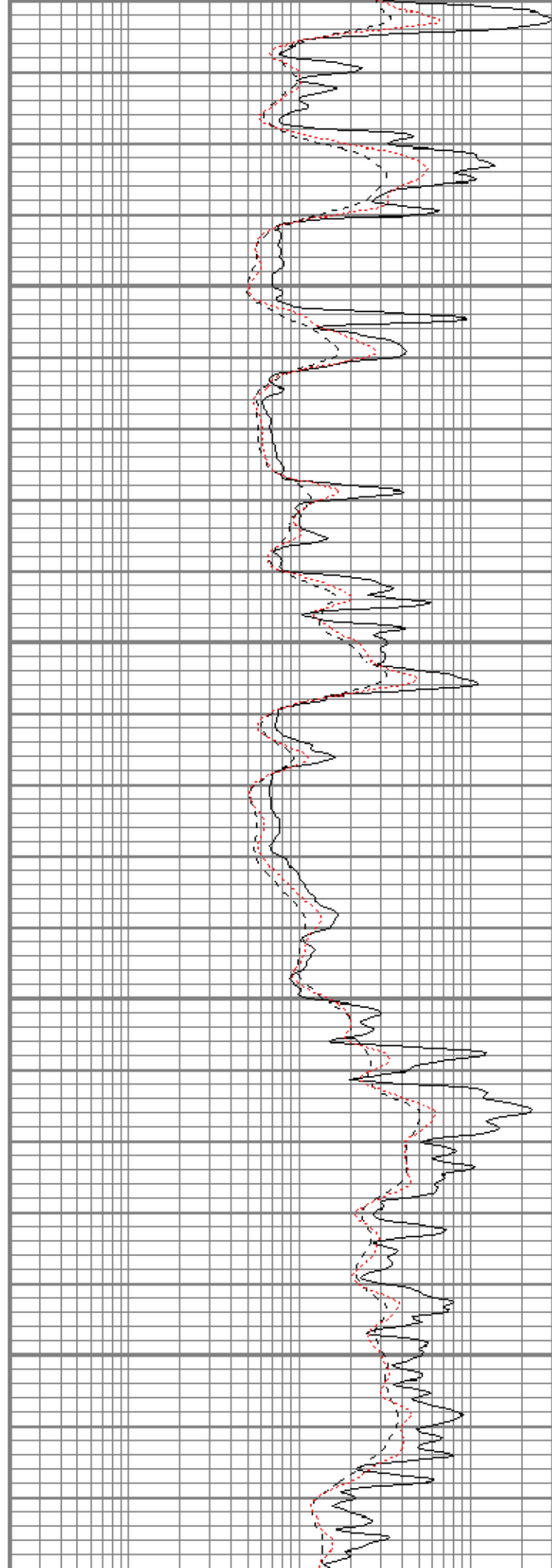


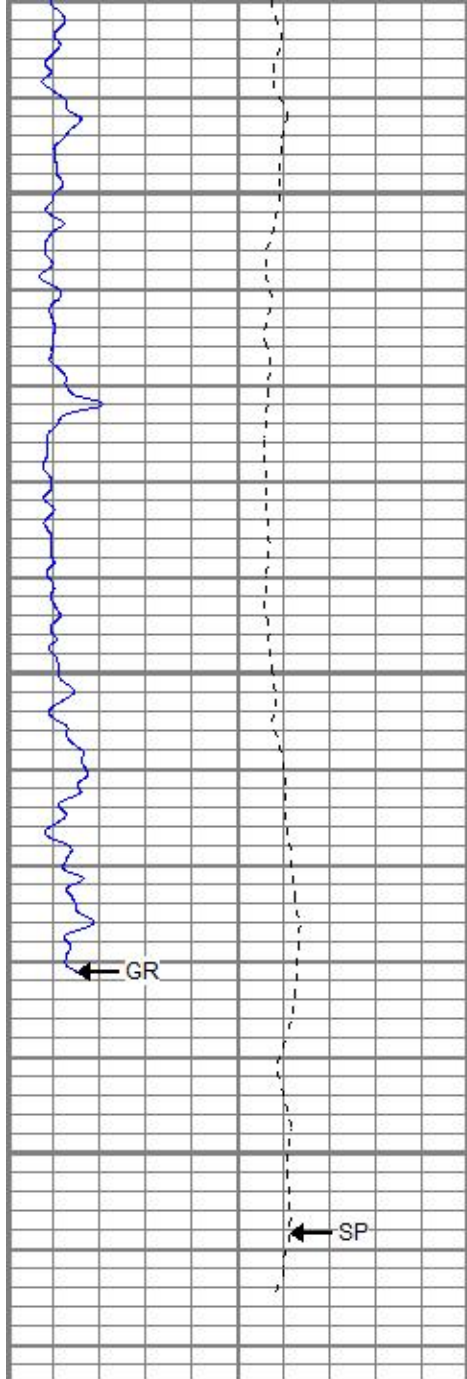
3350

3400

3450

3500





0	GR (GAPI)	150
-100	SP (mV)	100

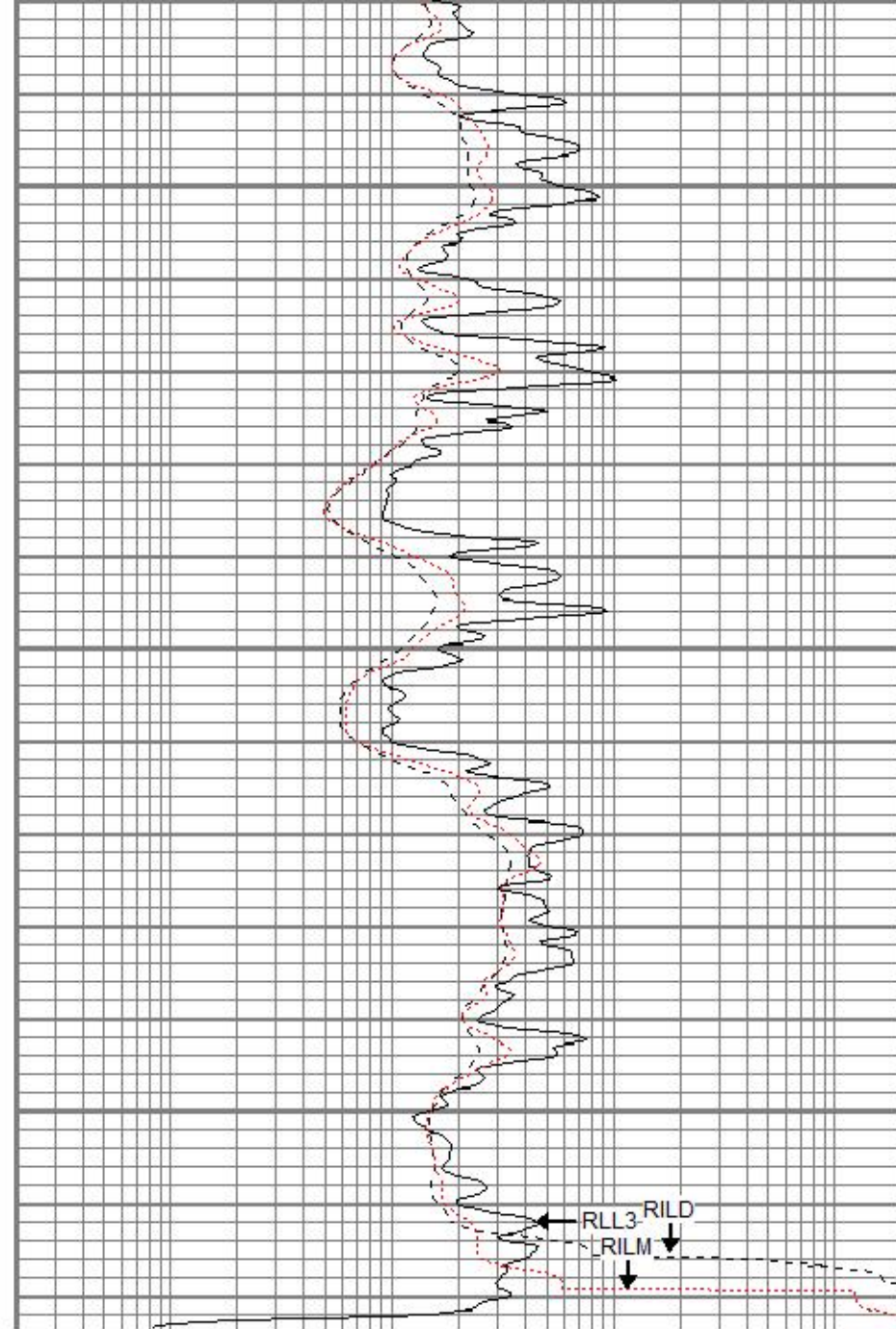
3550

3600

3650

GR

SP



0.2	RILD (Ohm-m)	2000
0.2	RLL3 (Ohm-m)	2000
0.2	RILM (Ohm-m)	2000

RLL3 RILD
RILM

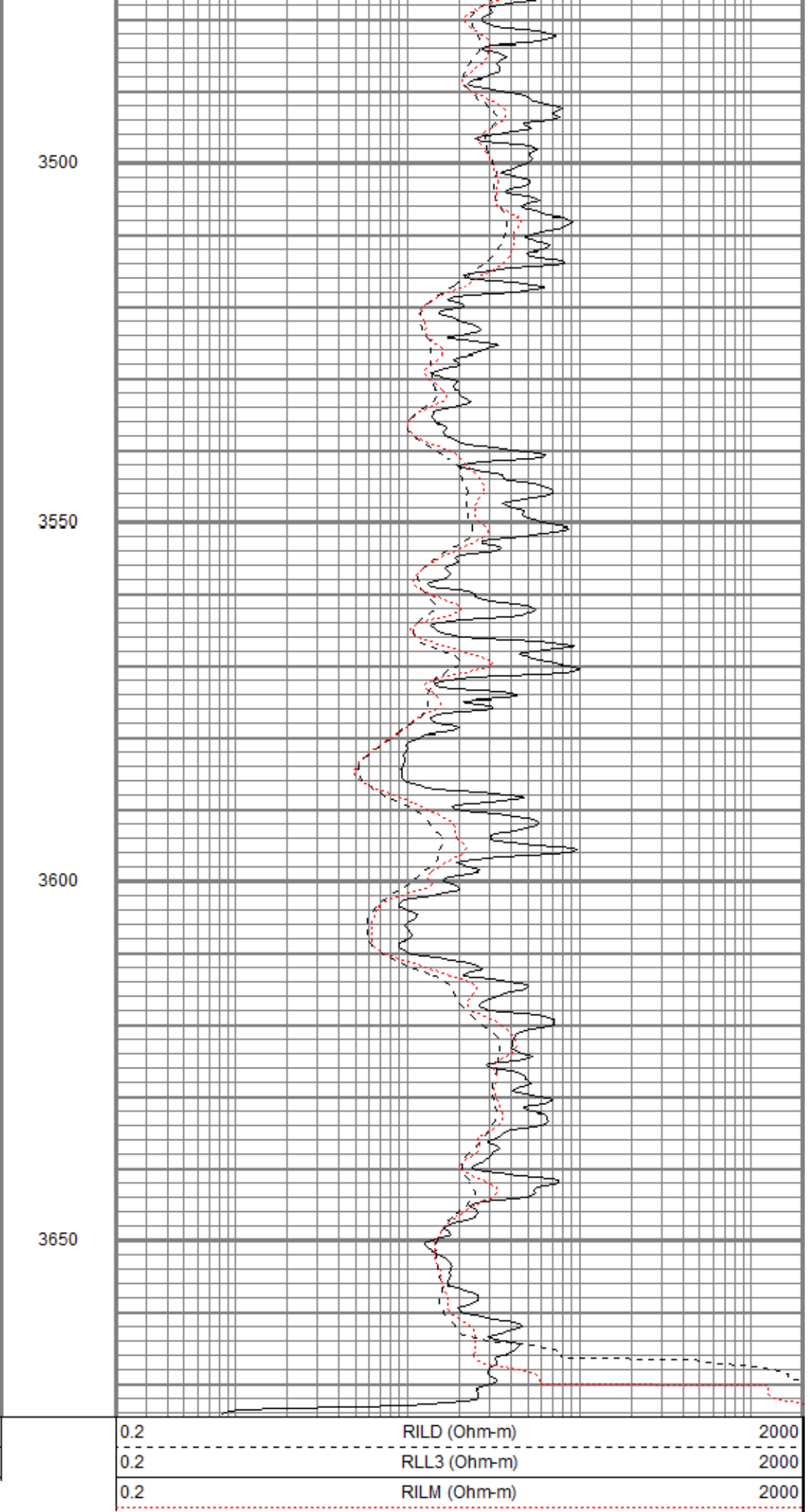
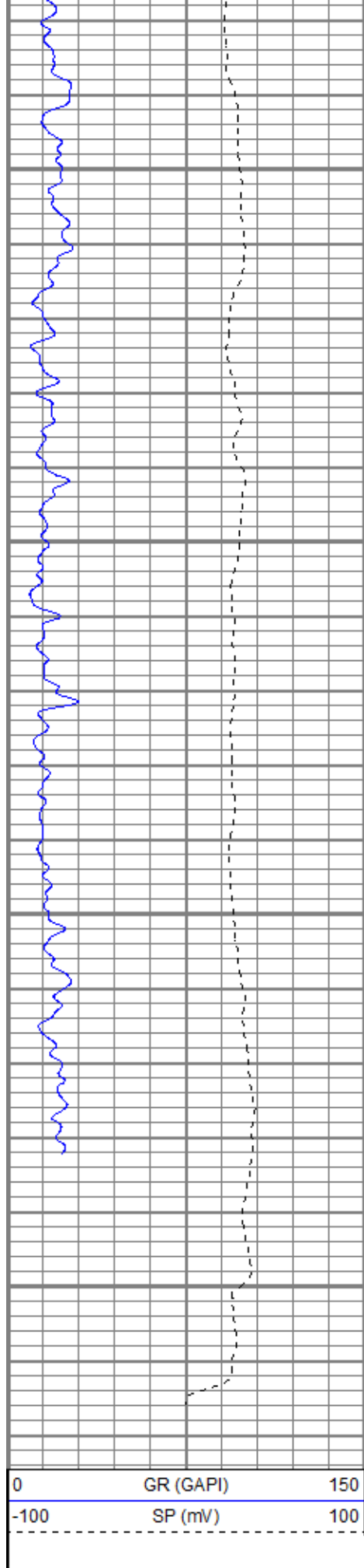


REPEAT SECTION

Database File brexlebow#11oh.db
 Dataset Pathname pass2.1
 Presentation Format kdil
 Dataset Creation Thu Dec 06 08:52:41 2018
 Charted by Depth in Feet scaled 1:240

0	GR (GAPI)	150
-100	SP (mV)	100

0.2	RILD (Ohm-m)	2000
0.2	RLL3 (Ohm-m)	2000
0.2	RILM (Ohm-m)	2000



Dual Induction Calibration Report

Serial-Model: 5375-G
 Surface Cal Performed: Sat Oct 10 08:33:18 2015
 Downhole Cal Performed: Wed Dec 05 05:00:18 2018
 After Survey Verification Performed: Sat Oct 10 08:33:27 2015

Surface Calibration

		Readings			References			Results	
Loop:	Air	Loop		Air	Loop		m	b	
Deep	0.007	0.642	V	0.000	350.000	mmho/m	551.294	-3.816	
Medium	0.010	0.728	V	0.000	400.000	mmho/m	556.531	-5.391	
Internal:	Zero	Cal		Zero	Cal		m	b	
Deep	0.007	0.642	V	0.000	350.000	mmho/m	550.717	-3.768	
Medium	0.010	0.729	V	0.000	550.000	mmho/m	764.510	-7.354	

Downhole Calibration

		Readings			References			Results	
Internal:	Zero	Cal		Zero	Cal		m	b	
Deep	0.145	350.239	mmho/m	-0.044	350.323	mmho/m	1.001	-0.189	
Medium	0.435	400.472	mmho/m	-0.037	400.340	mmho/m	1.001	-0.473	
Shallow	2.440	0.018	V	500.000	2.000	Ohm-m	205.554	0.825	

After Survey Verification

		Readings			Targets			Results	
Internal:	Zero	Cal		Zero	Cal		m'	b'	
Deep	0.000	0.000	mmho/m	0.145	350.239	mmho/m	1.001	-0.189	
Medium	0.000	0.000	mmho/m	0.435	400.472	mmho/m	1.001	-0.473	
Shallow	0.000	0.000	Ohm-m	500.000	2.000	Ohm-m	1.000	0.000	

Neutron Calibration Report

Serial Number: 2017
 Tool Model: lithogearhart
 Performed: (Not Performed)
 Calibrator Value: 1 NAPI
 Calibrator Reading: 1 cps
 Sensitivity: 1 NAPI/cps

Temperature Calibration Report

Serial Number: WithMC
 Tool Model: WMC
 Performed: Wed Dec 05 04:54:01 2018

	Reference	Reading
Low Reference:	0.00 degF	0.00 degF
High Reference:	1.00 degF	1.00 degF
Gain:	1.00	
Offset:	0.00	
Delta Spacing	1	

Inclinometer Calibration Report

Performed:	Wed Dec 05 04:53:48 2018				
	Low Read.	High Read.	Low Ref.	High Ref.	
X Accelerometer	205.00	1843.00	-1.00	1.00	gee
Y Accelerometer	205.00	1843.00	-1.00	1.00	gee
Z Accelerometer					gee

Gamma Ray Calibration Report

Serial Number:	WithMC		
Tool Model:	WMC		
Performed:	Wed Dec 05 04:58:30 2018		
Calibrator Value:	1.0	GAPI	
Background Reading:	0.0	cps	
Calibrator Reading:	1.0	cps	
Sensitivity:	1.0000	GAPI/cps	

Sensor	Offset (ft)	Schematic	Description	Length (ft)	O.D. (in)	Weight (lb)
GR	40.07		CHD-STD	0.50	1.69	1.00
ACCY	38.91		ADT-WMC (WithMC) Admyr Telemetry With Mudcell	4.58	3.50	120.00
ACCX	38.91					
SSTAT	38.49					
PSTAT	37.66					
ASTAT	37.66					
GRD	36.82		NEU-lithogearhart (2017)	5.65	3.50	85.00
TEMP	36.82					
NEU	33.46					
LStat	24.30					
LS8	23.64					
LS7	23.64					
LS6	23.64		ADT1LITH-A (1) Admyr Litho Density Tool	9.29	3.50	240.00
LS5	23.64					
LS4	23.64					
LS3	23.64					
LS2	23.64					
LS1	23.64					
LSV	23.64					
LSD	23.62					
SSV	23.43					
SS8	23.43					
SS7	23.43					
SS6	23.43					
SS5	23.43		DIL-G (5375) Gearhart	21.47	4.00	345.00
SS4	23.43					
SS3	23.43					
SS2	23.43					
SS1	23.43					
DCAL	23.37					

SSD	23.04
SP	10.60
CILD	10.60
CILM	6.89



RLL3	1.70
TR_Mon	0.00

Dataset: brexlebow#11oh.db: field/well/run1/pass3.1
Total length: 41.49 ft
Total weight: 791.00 lb
O.D.: 4.00 in