



**DUAL
INDUCTION
LOG**

Company Palomino Petroleum
 Well Butterfield #3
 Field Overland Northwest
 County Gove
 State Kansas

Company Palomino Petroleum
 Well Butterfield #3
 Field Overland Northwest
 County Gove State Kansas

Location: API #: 15 063 22338
 1403' FNL & 559' FEL
 NW-NE-SE-NE
 SEC 11 TWP 14S RGE 26W
 Permanent Datum Ground Level Elevation 2487'
 Log Measured From KB 10' AGL
 Drilling Measured From KB
 Other Services
 CDNL
 ML
 Elevation
 K.B. 2497'
 D.F. 2496'
 G.L. 2487'

Date	11-24-18
Run Number	One
Depth Driller	4466'
Depth Logger	4471'
Bottom Logged Interval	4469'
Top Log Interval	190'
Casing Driller	8 5/8" @ 202'
Casing Logger	202'
Bit Size	7 7/8"
Type Fluid in Hole	Chemical
Density / Viscosity	9.2/53
PH / Fluid Loss	11.0/7.2
Source of Sample	Pit
Rm @ Meas. Temp	1.7@74degf
Rmf @ Meas. Temp	1.27@74degf
Rmc @ Meas. Temp	2.04@74degf
Source of Rmf / Rmc	Calculated
Rm @ BHT	1.08@116degf
Time Circulation Stopped	10:30 p.m
Time Logger on Bottom	2:20 a.m
Maximum Recorded Temperature	116degf
Equipment Number	T127
Location	Hays, KS
Recorded By	C.Patterson
Witnessed By	Mr. Andrew Stenzel

<<< Fold Here >>>

All interpretations are opinions based on inferences from electrical or other measurements and we cannot and do not guarantee the accuracy or correctness of any interpretation, and we shall not, except in the case of gross or willful negligence on our part, be liable or responsible for any loss, costs, damages, or expenses incurred or sustained by anyone resulting from any interpretation made by any of our officers, agents or employees. These interpretations are also subject to our general terms and conditions set out in our current Price Schedule.

Comments

Take Quinter Rd. South To Gove K Rd.
 Then East 4 mi.to Gove 80(castle Rock sign), North Into

Thanks for using Gemini Wireline LLC
 785-625-1182



MAIN PASS

Database File ppbutterfield#3oh.db
 Dataset Pathname pass2
 Presentation Format kdillinn
 Dataset Creation Sat Nov 24 02:38:25 2018
 Charted by Depth in Feet scaled 1:600

0 GR (GAPI) 150

1000 CILD (mmho/m) 0

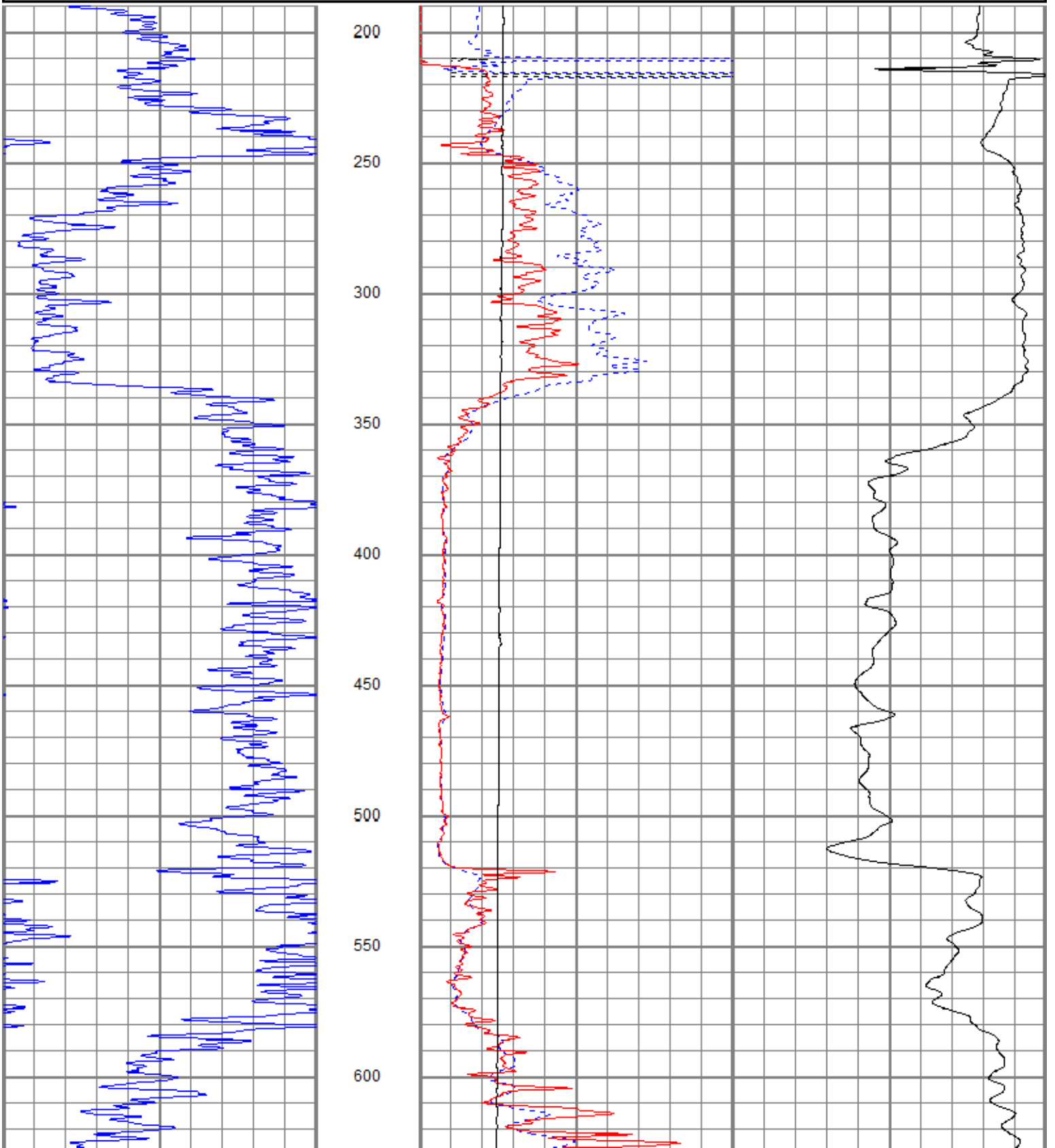
10000 LTEN (lb) 0

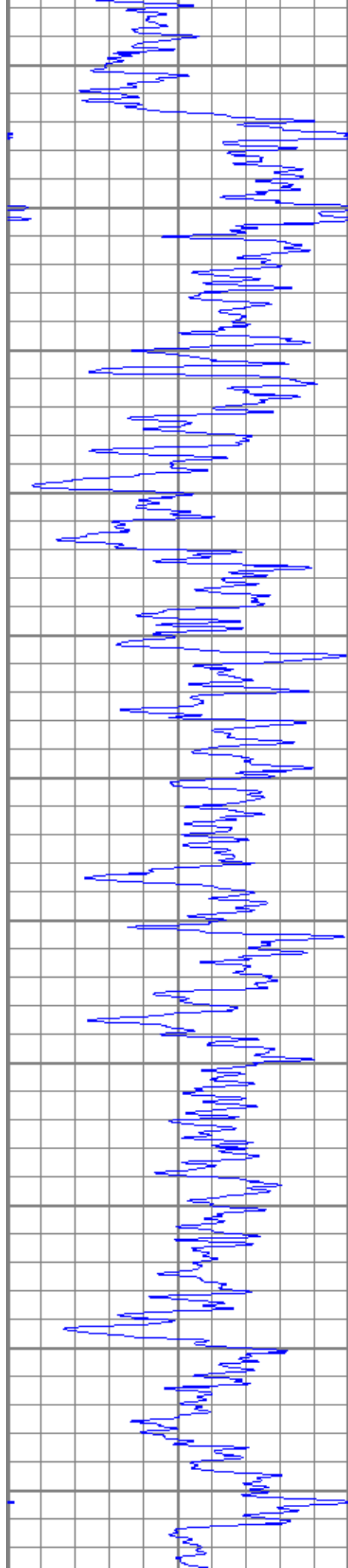
0 RILD (Ohm-m) 50

0 RLL3 (Ohm-m) 50

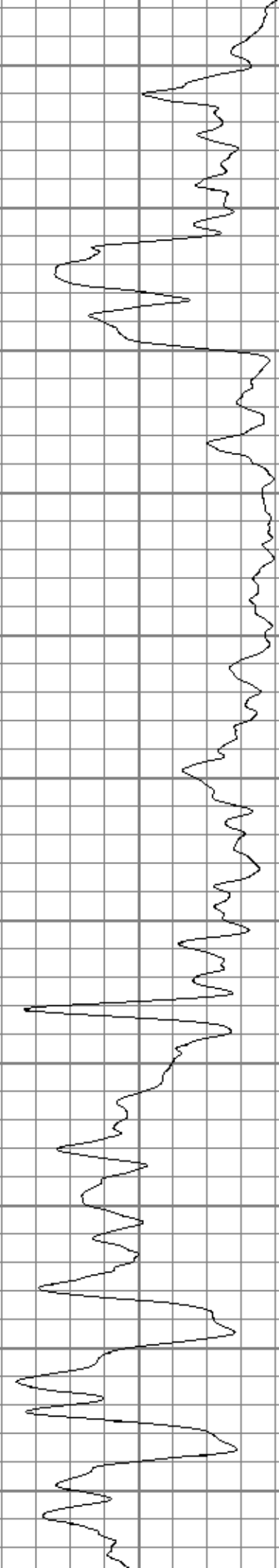
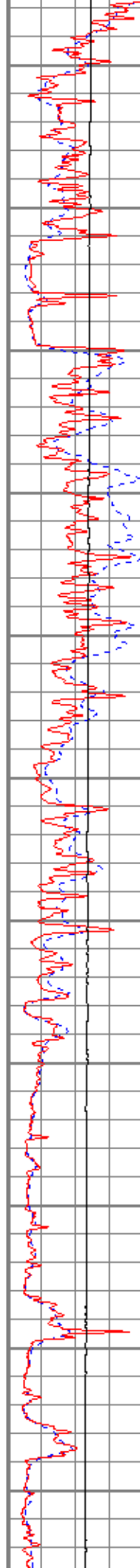
50 RILD x 10 (Ohm-m) 500

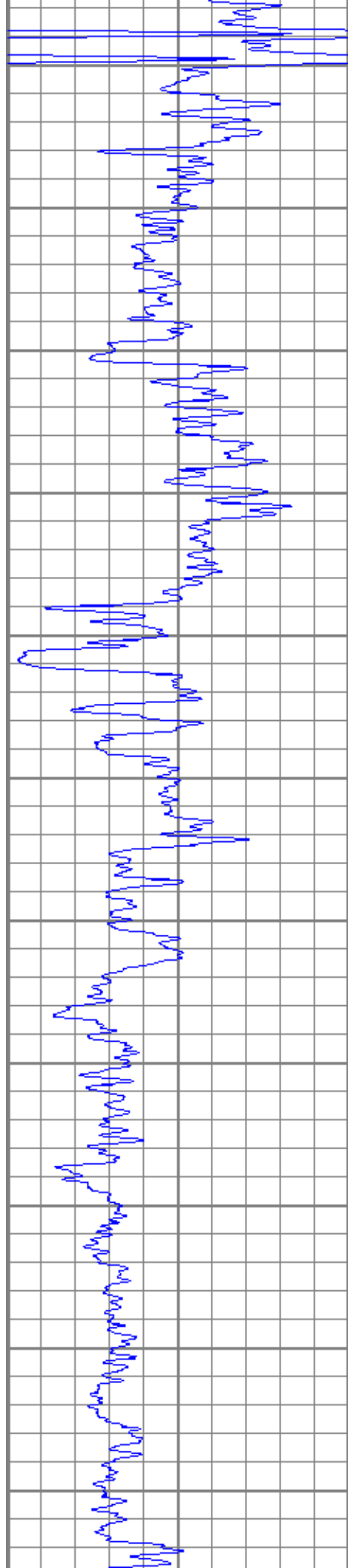
50 RLL3 x 10 (Ohm-m) 500



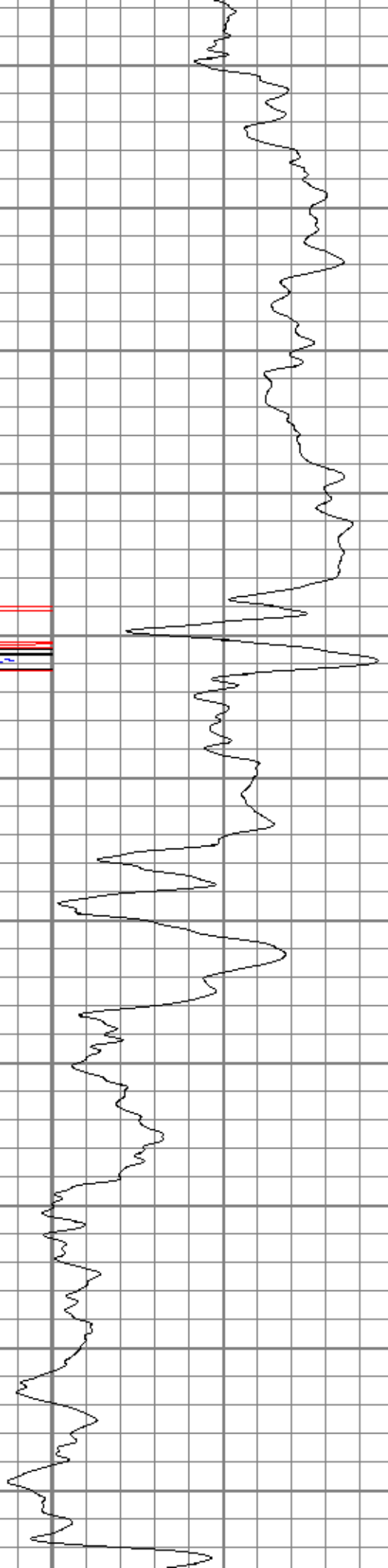


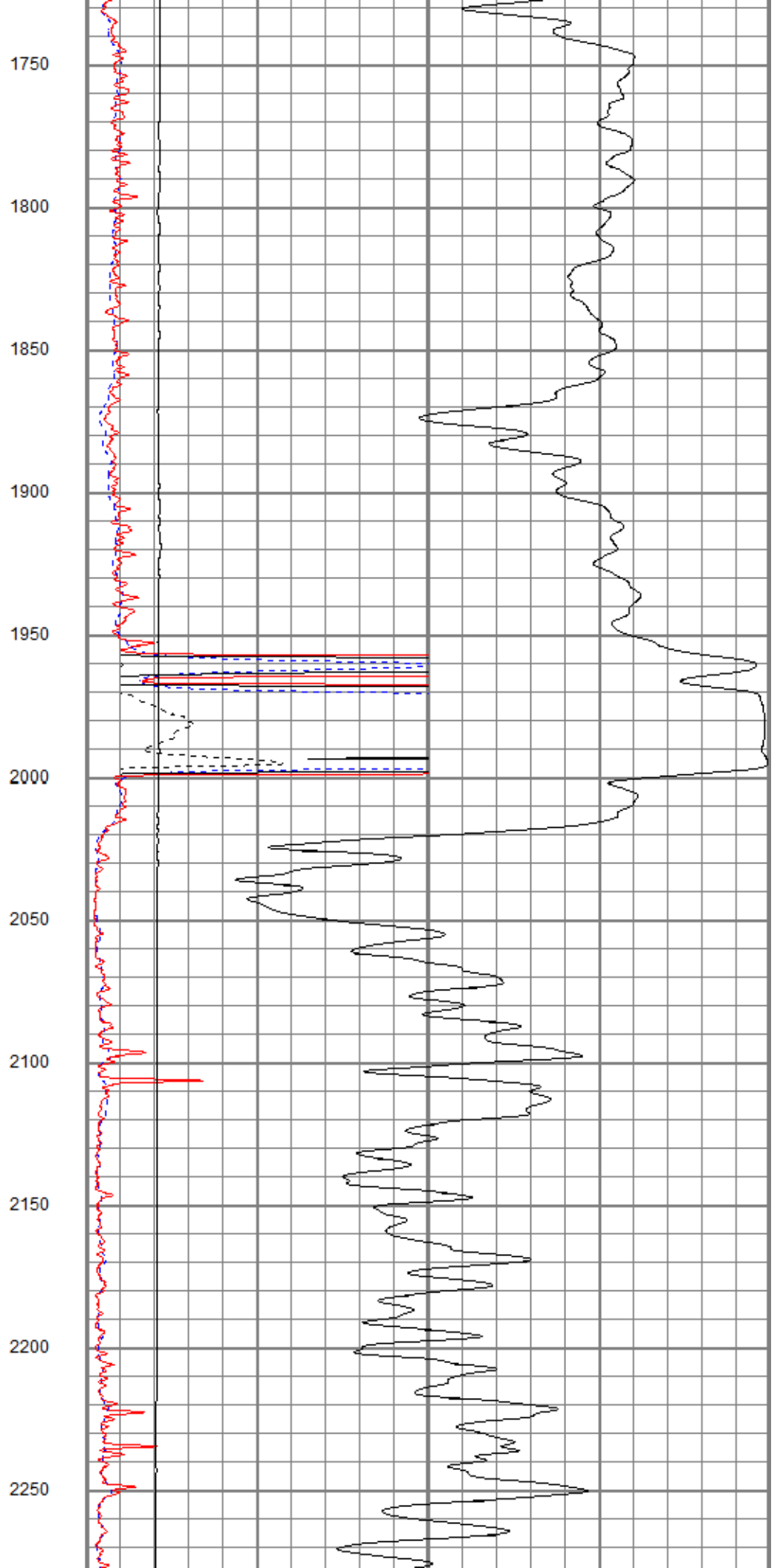
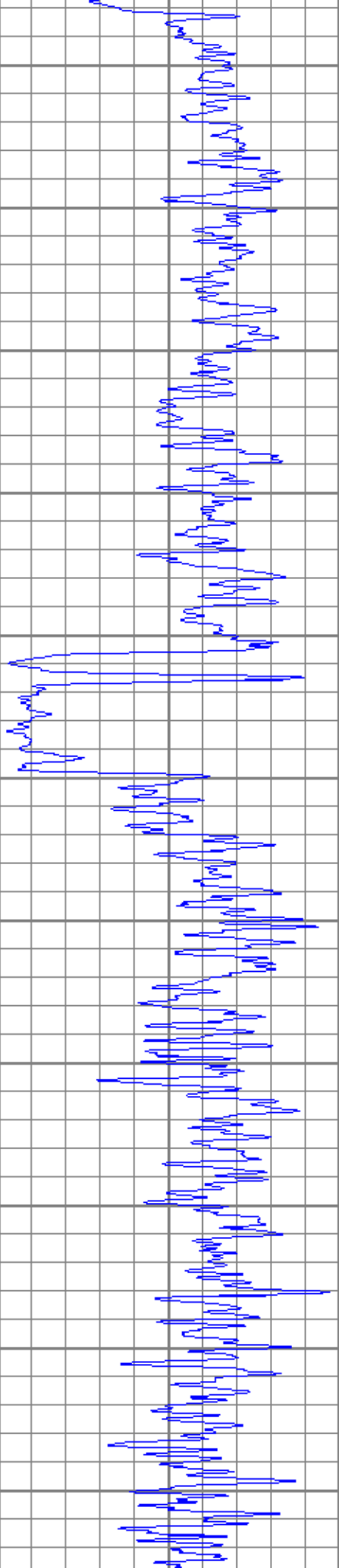
650
700
750
800
850
900
950
1000
1050
1100
1150

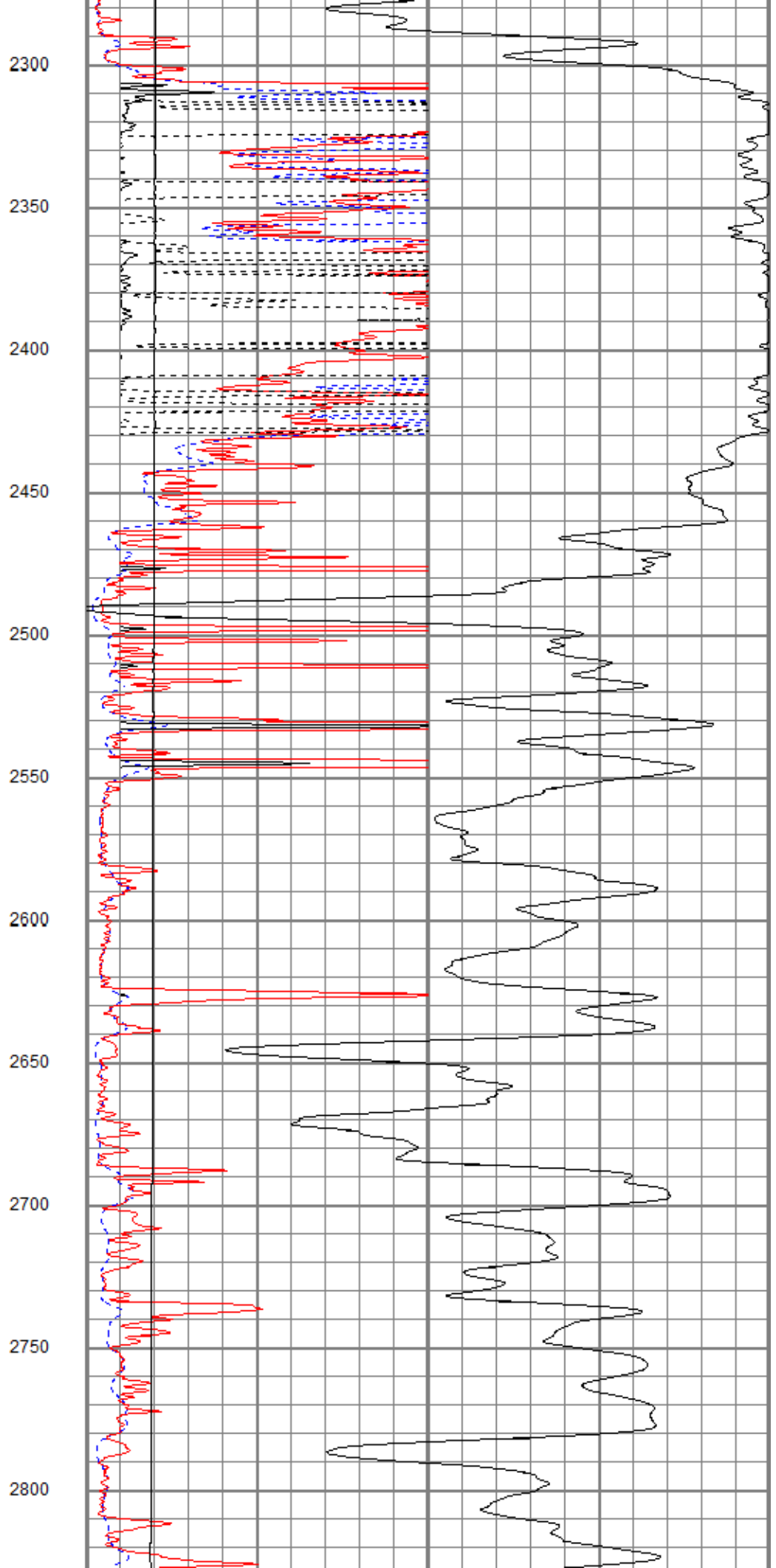
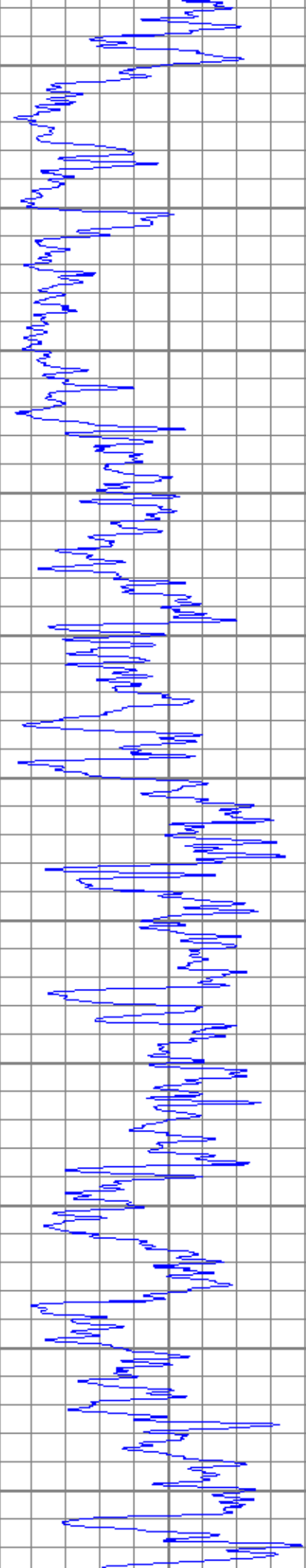


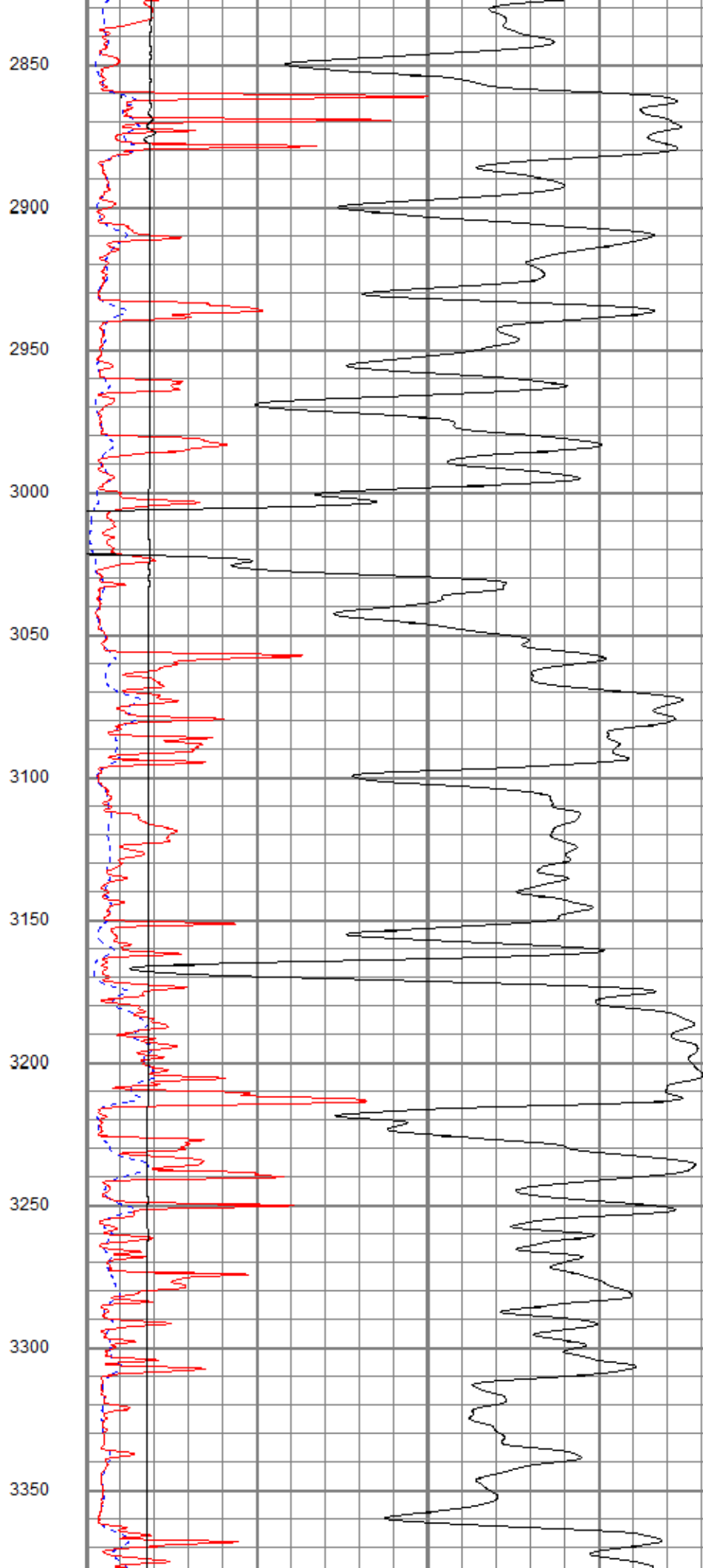
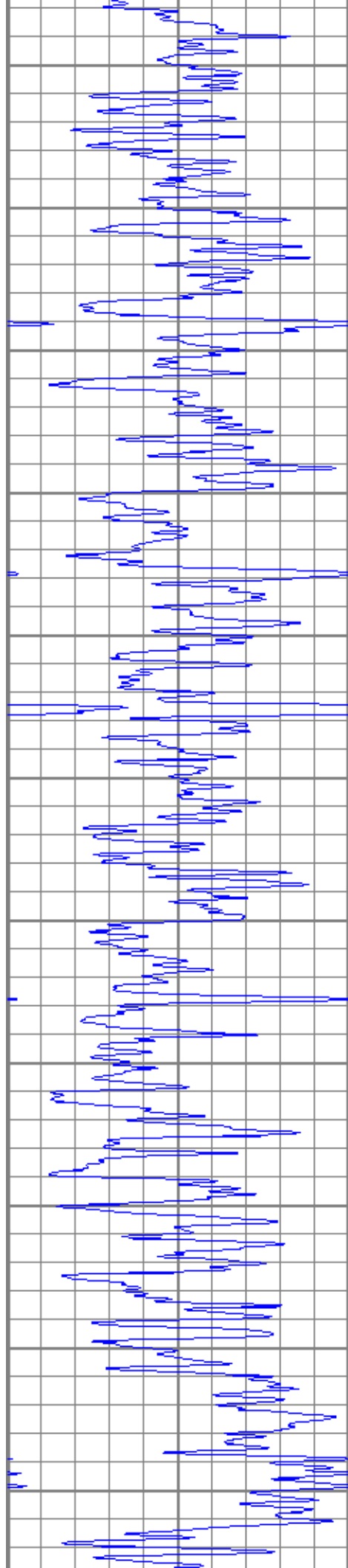


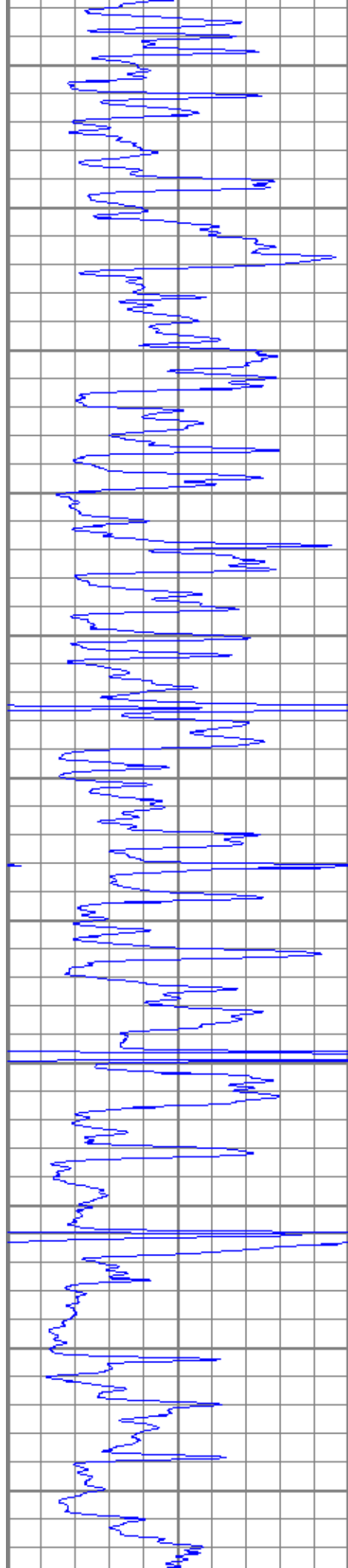
1200
1250
1300
1350
1400
1450
1500
1550
1600
1650
1700



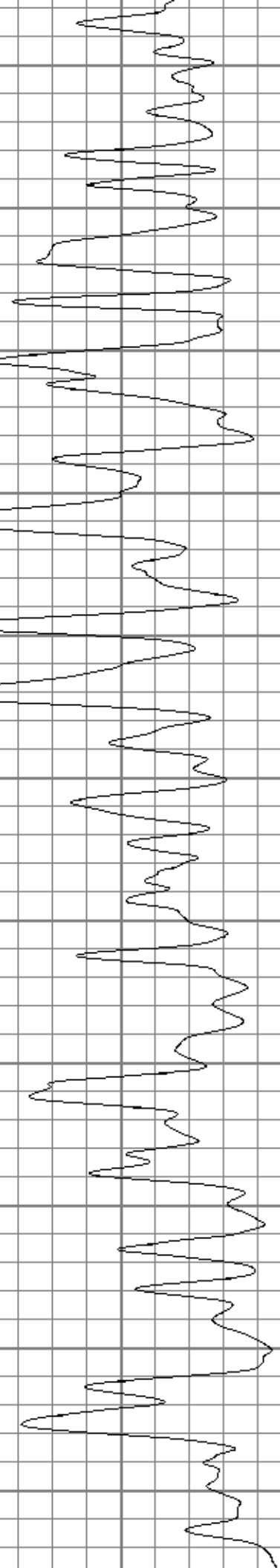
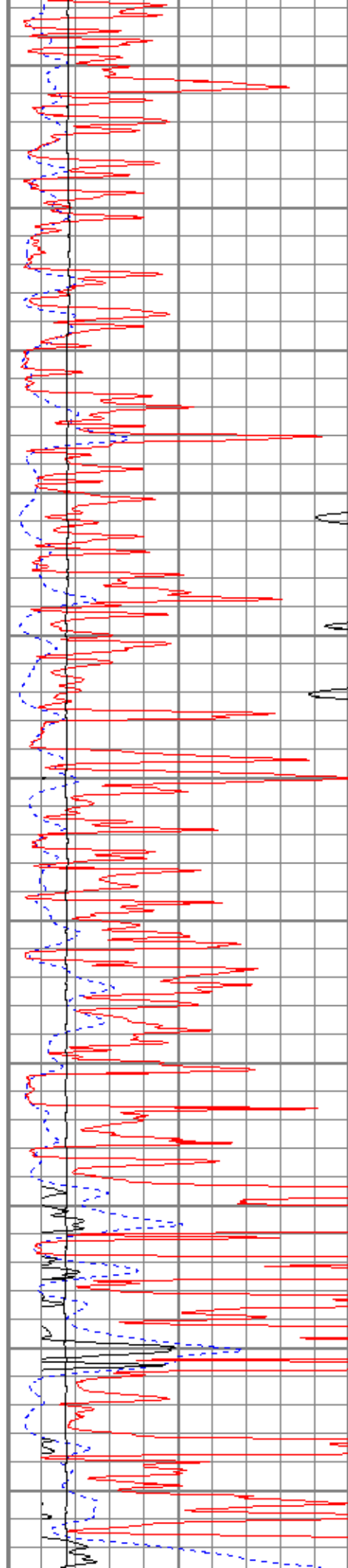


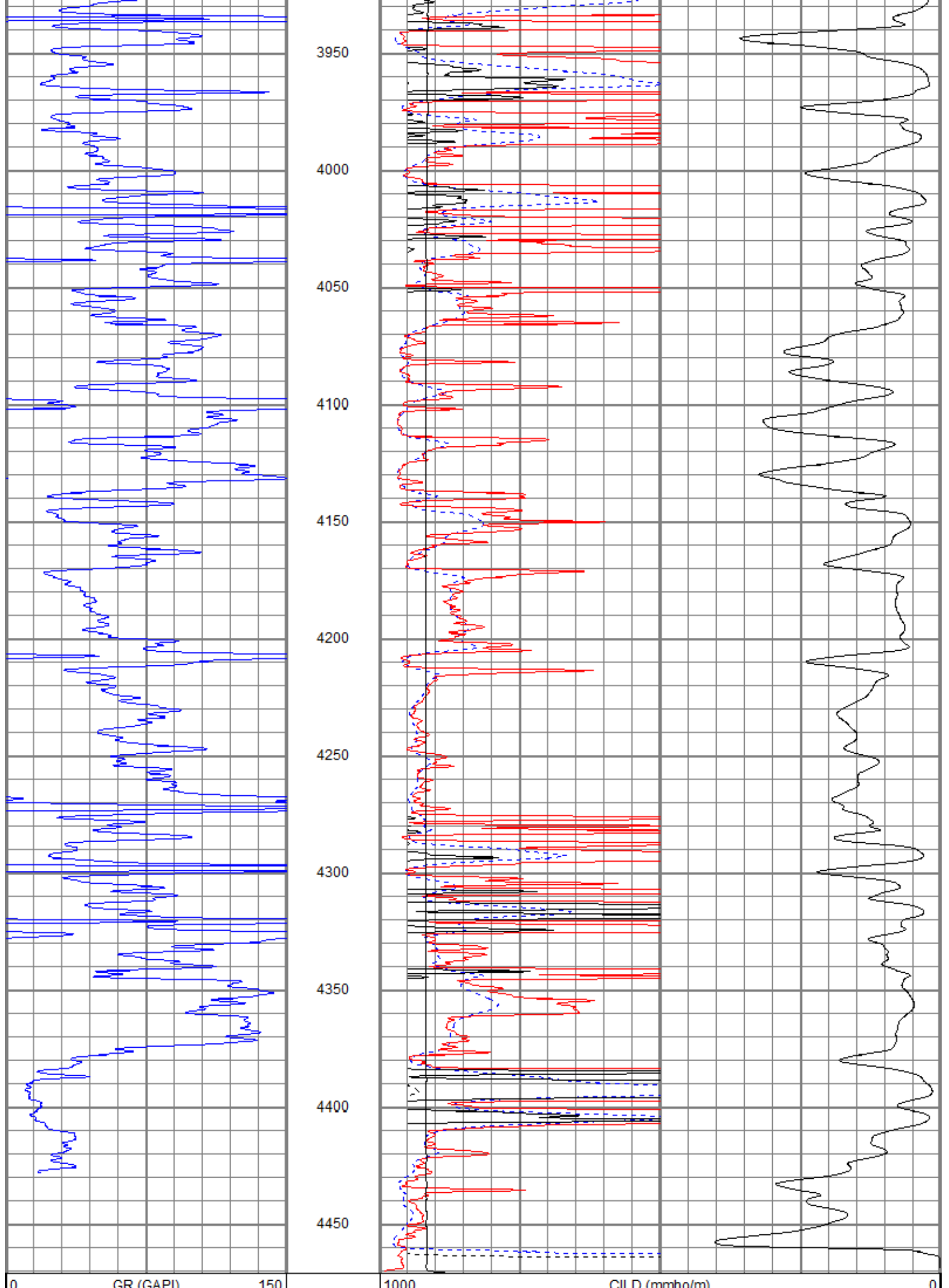






3400
3450
3500
3550
3600
3650
3700
3750
3800
3850
3900





GR (GAPI)	150
SP (mV)	100

10000		LTEN (lb)	0
0	RILD (Ohm-m)	50	
0	RLL3 (Ohm-m)	50	
50	RILD x 10 (Ohm-m)	500	
50	RLL3 x 10 (Ohm-m)	500	

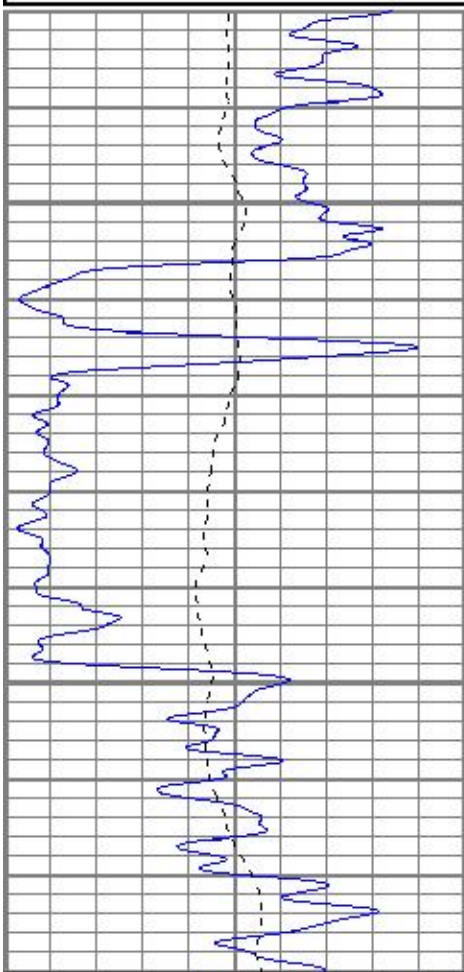


MAIN PASS

Database File: ppbutterfield#3oh.db
 Dataset Pathname: pass2
 Presentation Format: kdil
 Dataset Creation: Sat Nov 24 02:38:25 2018
 Charted by: Depth in Feet scaled 1:240

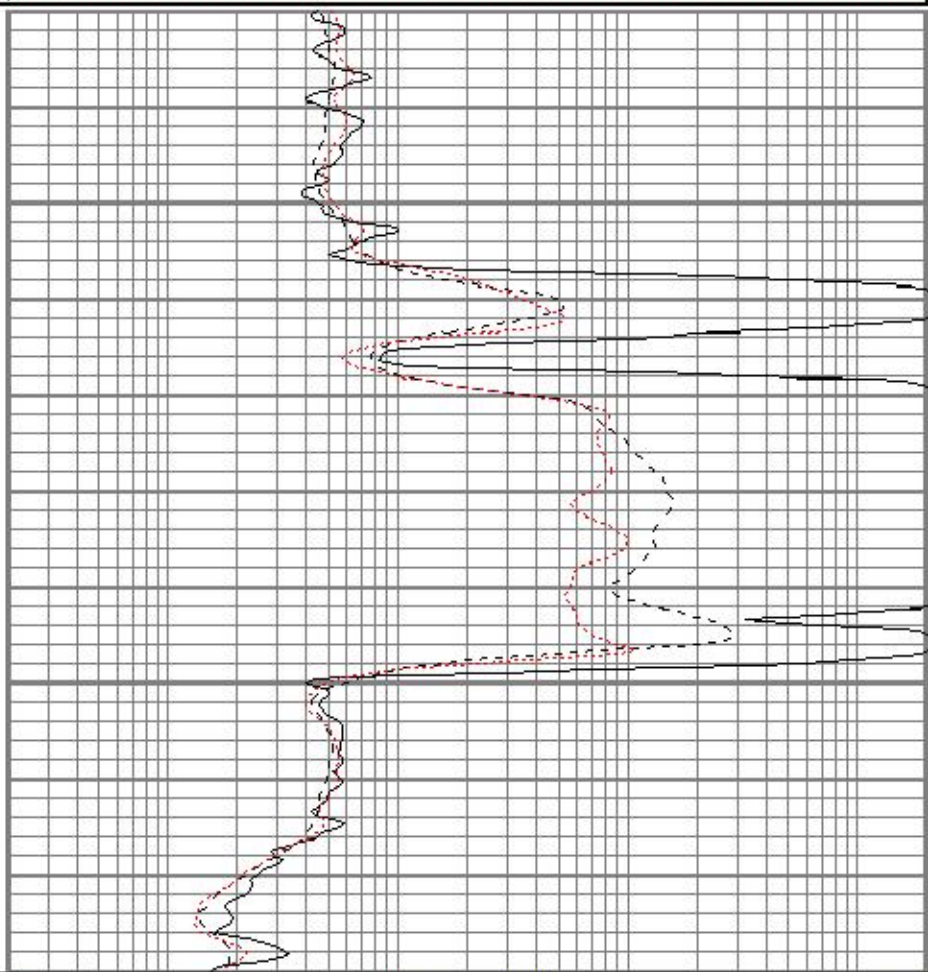
0	GR (GAPI)	150
-100	SP (mV)	100

0.2	RILD (Ohm-m)	2000
0.2	RLL3 (Ohm-m)	2000
0.2	RILM (Ohm-m)	2000



1950

2000



0	GR (GAPI)	150
-100	SP (mV)	100

0.2	RILD (Ohm-m)	2000
0.2	RLL3 (Ohm-m)	2000
0.2	RILM (Ohm-m)	2000

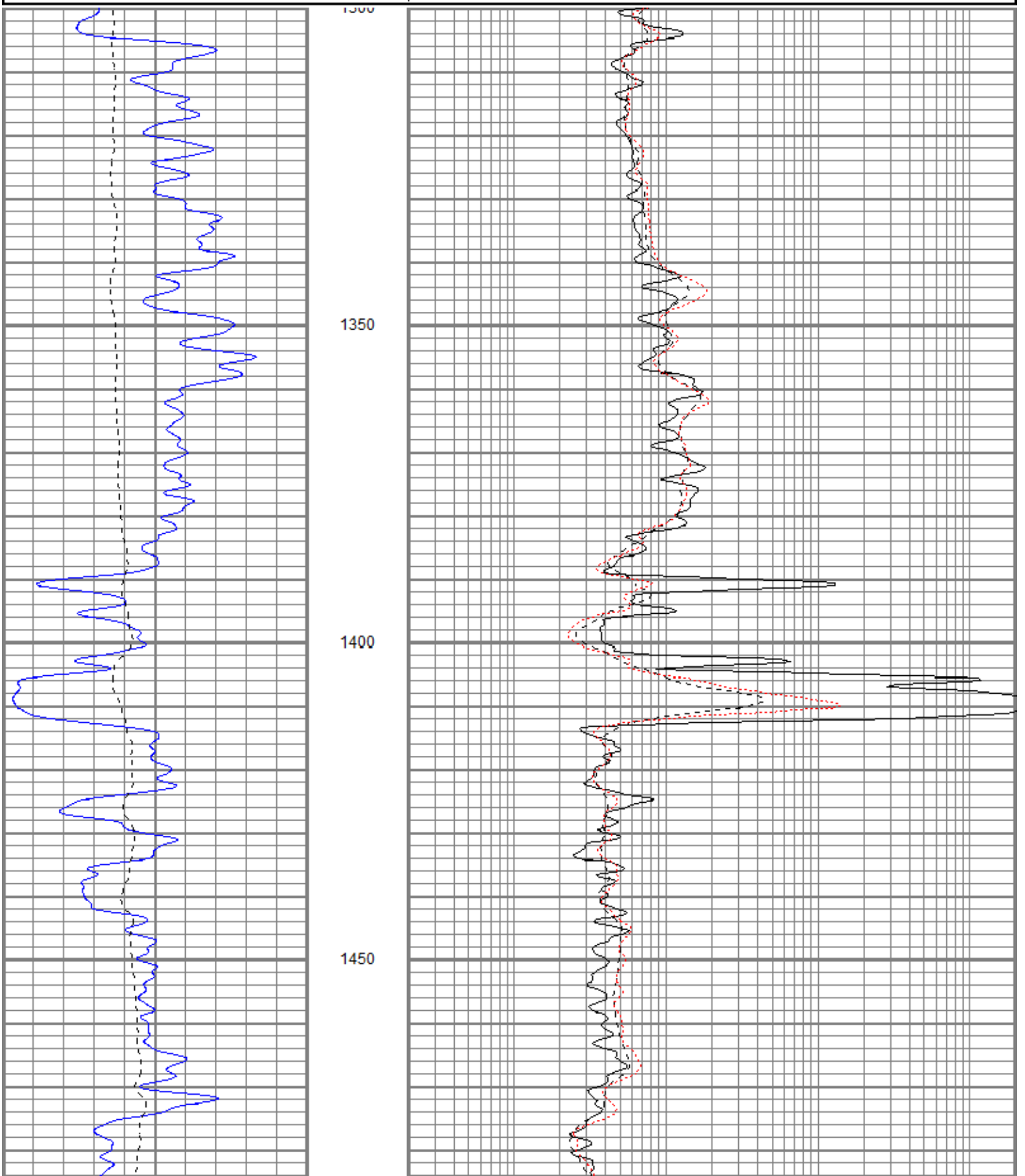


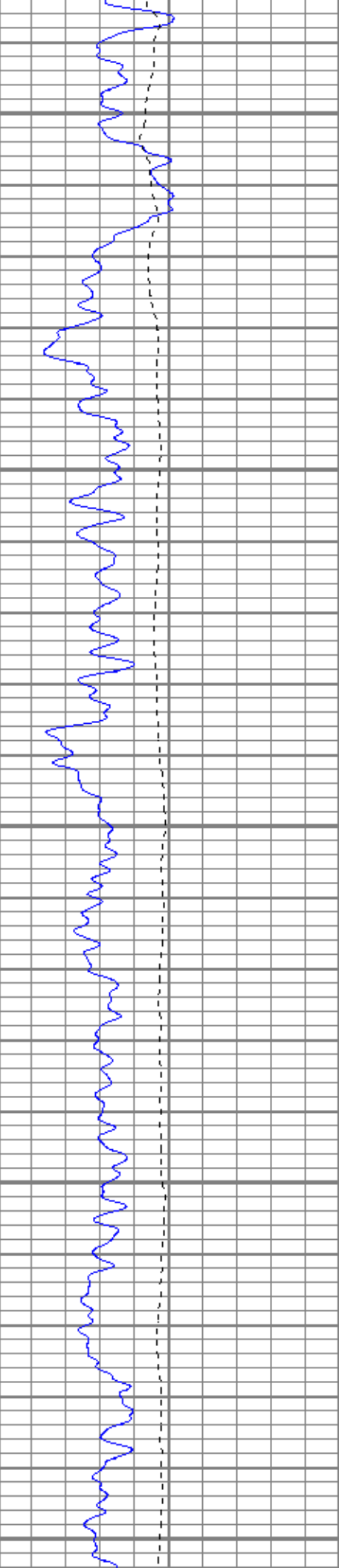
MAIN PASS

Database File ppbutterfield#3oh.db
 Dataset Pathname pass2
 Presentation Format kdil
 Dataset Creation Sat Nov 24 02:38:25 2018
 Charted by Depth in Feet scaled 1:240

0	GR (GAPI)	150
-100	SP (mV)	100

0.2	RILD (Ohm-m)	2000
0.2	RLL3 (Ohm-m)	2000
0.2	RILM (Ohm-m)	2000





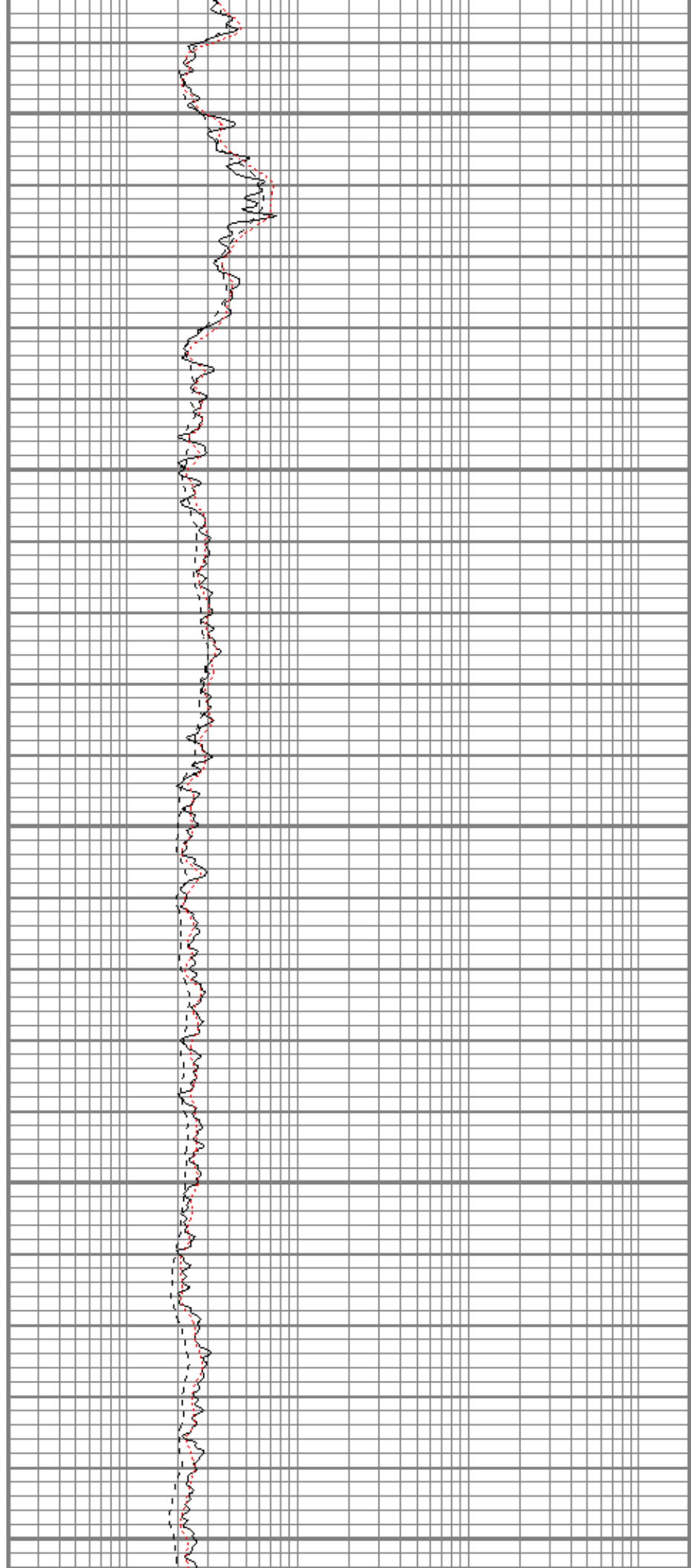
1500

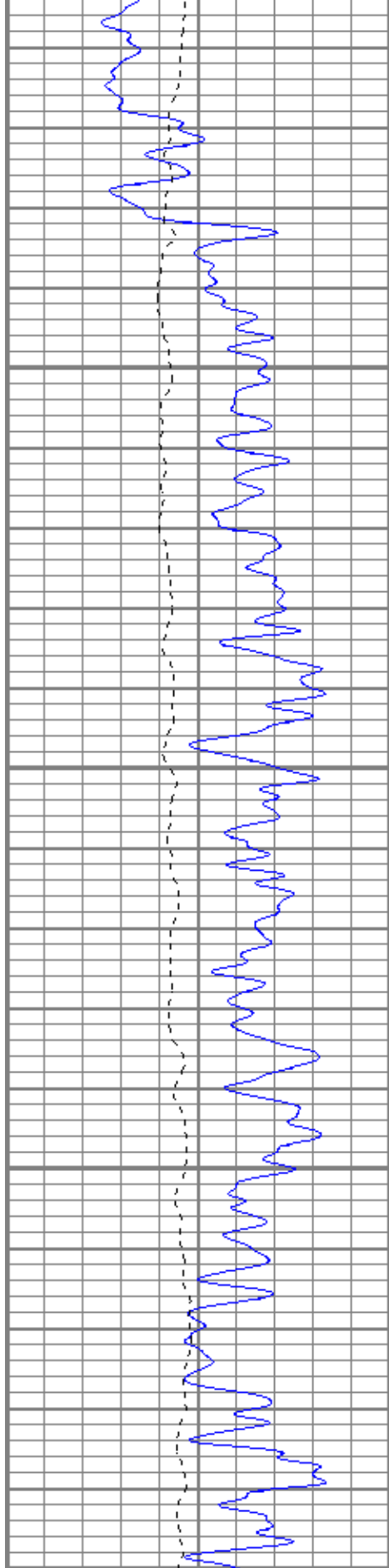
1550

1600

1650

1700





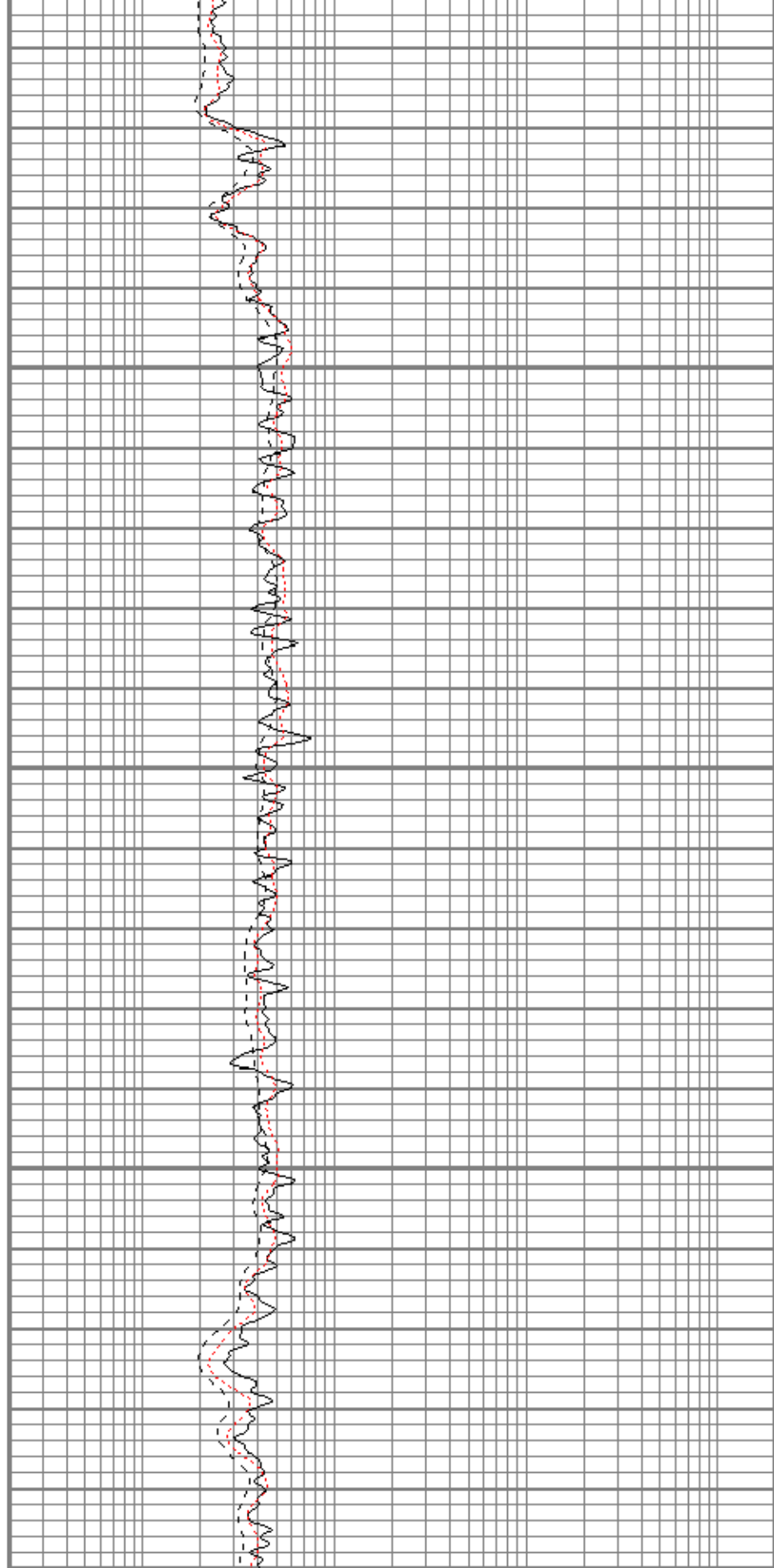
1750

1800

1850

1900

0	GR (GAPI)	150
-100	SP (mV)	100



0.2	RILD (Ohm-m)	2000
0.2	RLL3 (Ohm-m)	2000
0.2	RILM (Ohm-m)	2000



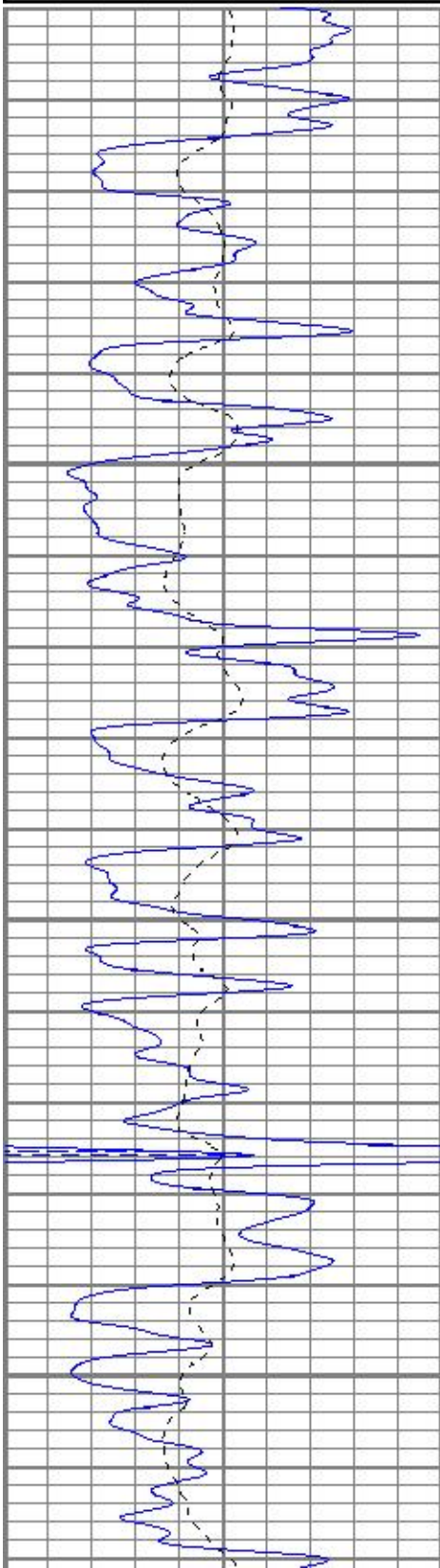


MAIN PASS

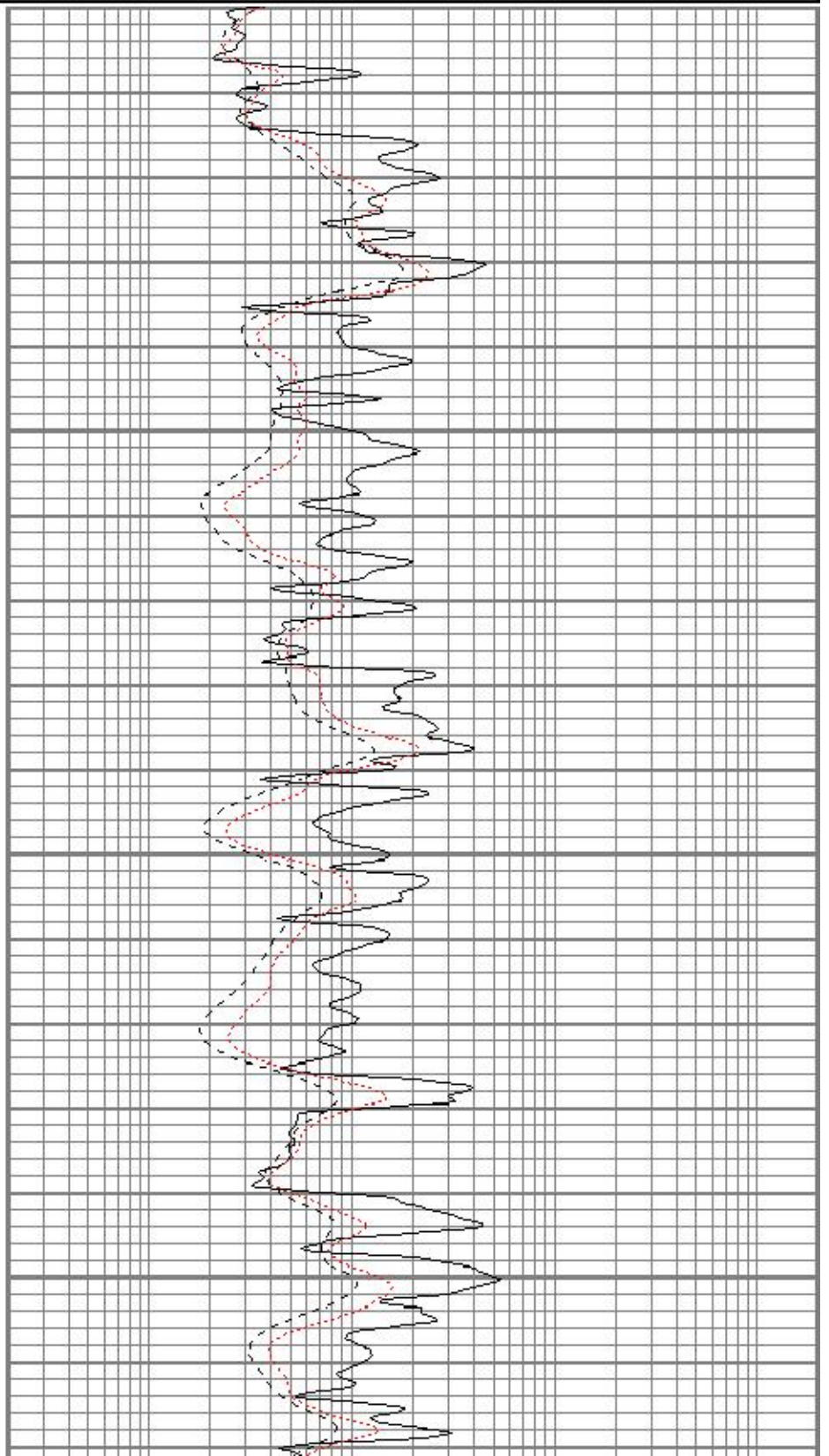
Database File ppbutterfield#3oh.db
Dataset Pathname pass2
Presentation Format kdil
Dataset Creation Sat Nov 24 02:38:25 2018
Charted by Depth in Feet scaled 1:240

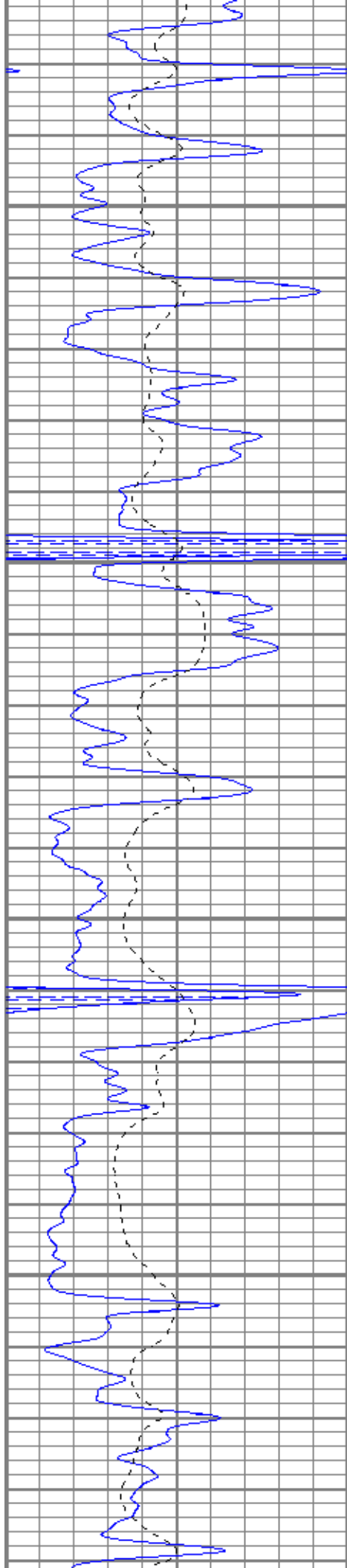
0	GR (GAPI)	150
-100	SP (mV)	100

0.2	RILD (Ohm-m)	2000
0.2	RLL3 (Ohm-m)	2000
0.2	RILM (Ohm-m)	2000



3500
3550
3600
3650



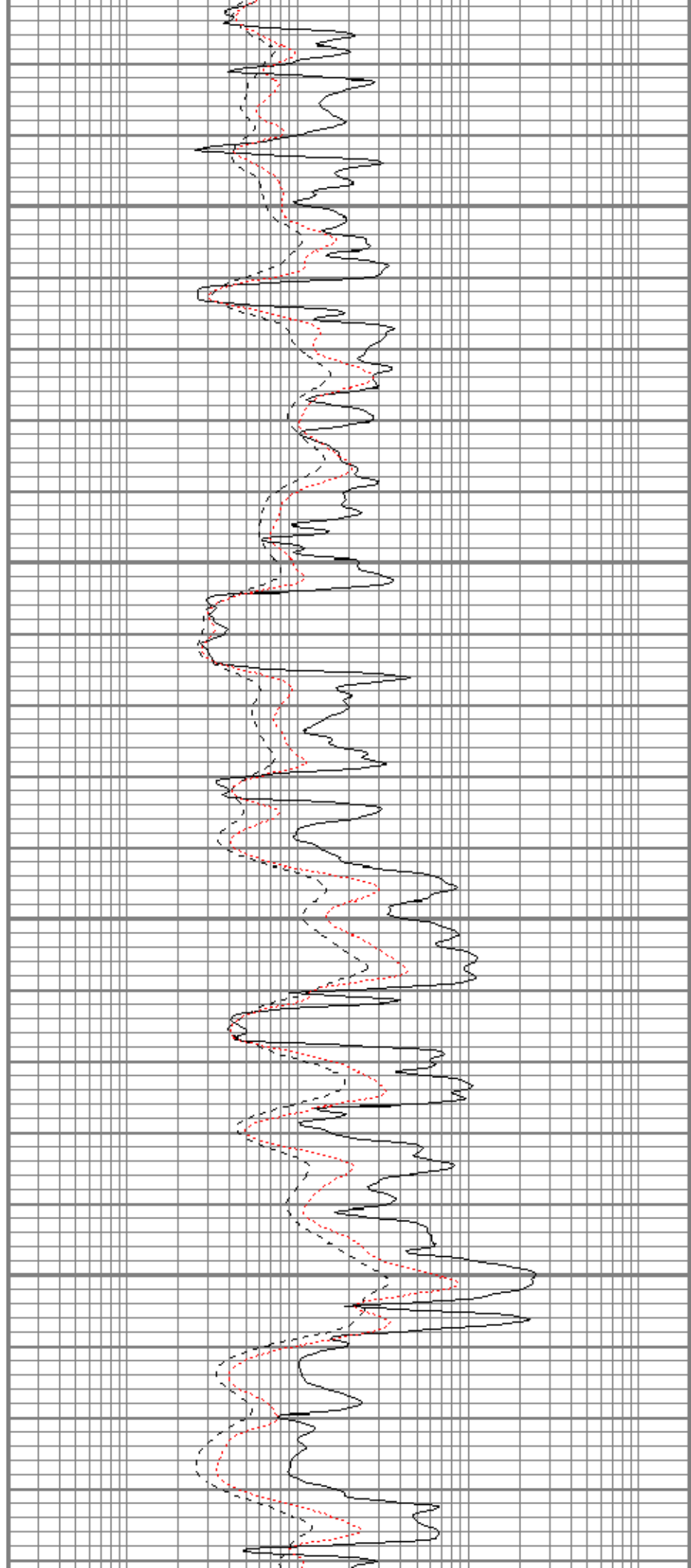


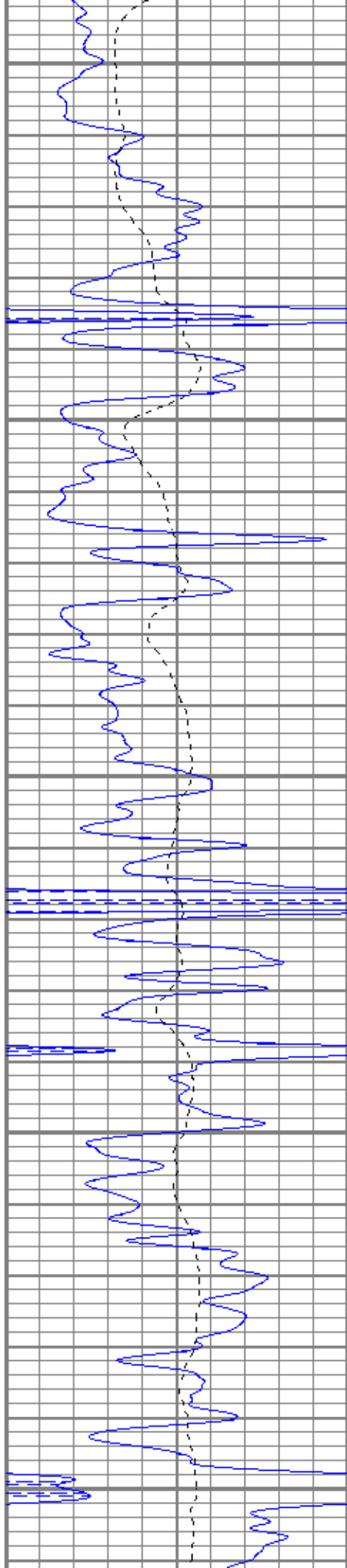
3700

3750

3800

3850





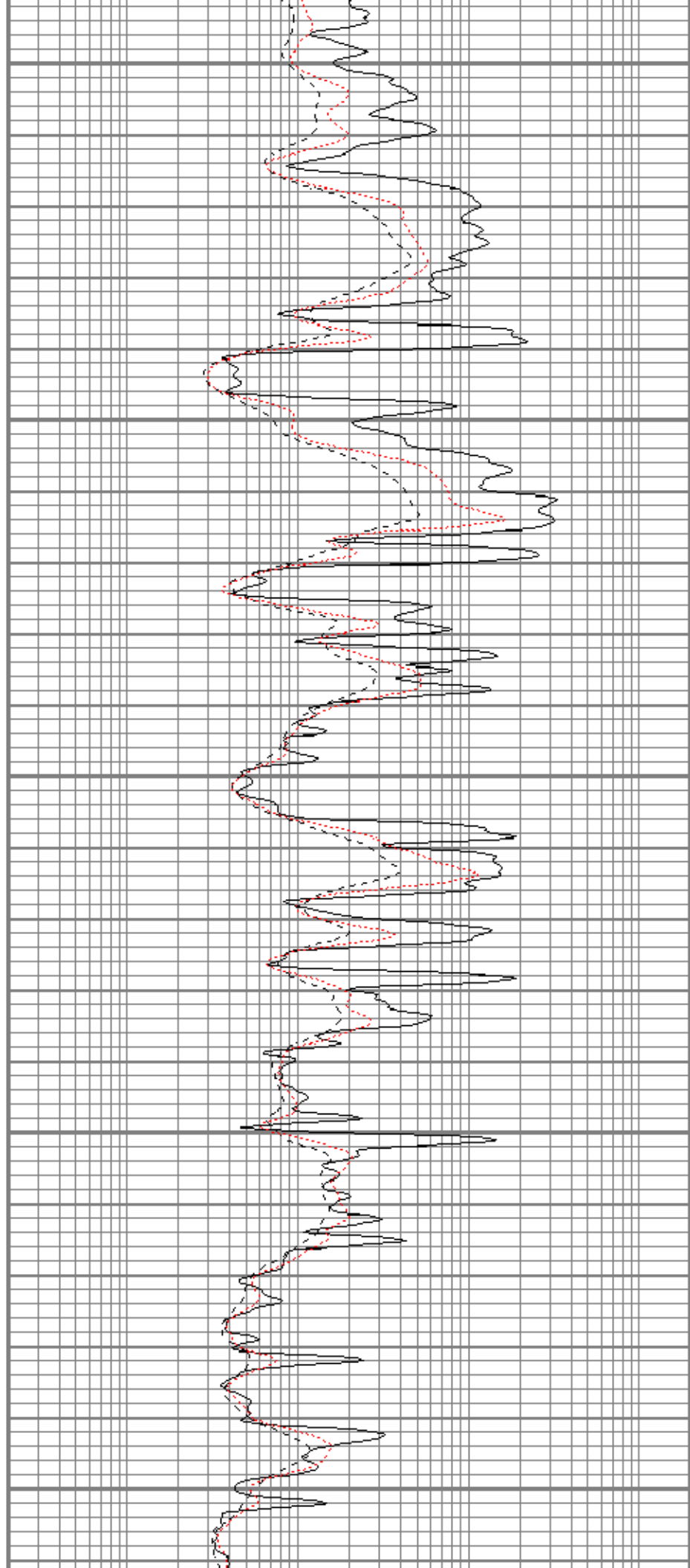
3900

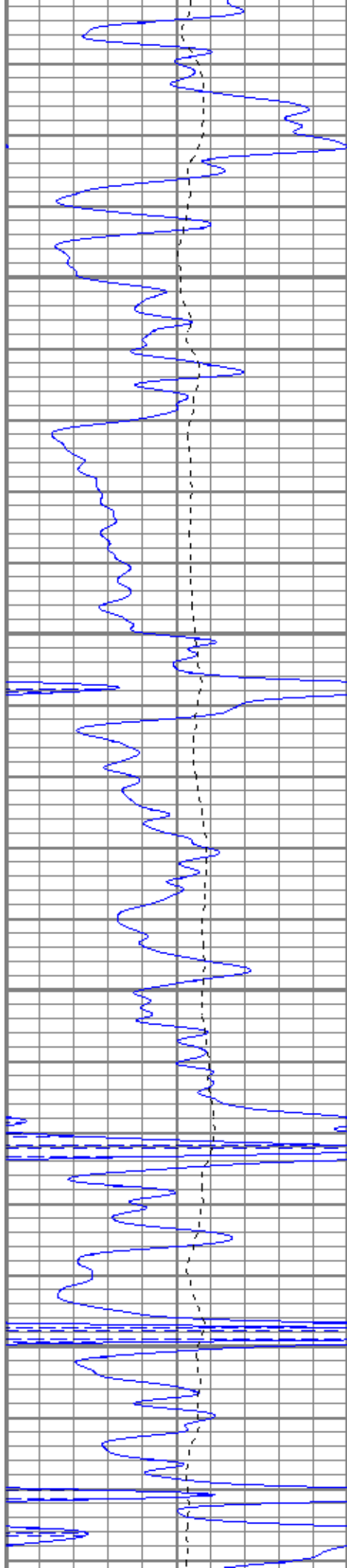
3950

4000

4050

4100



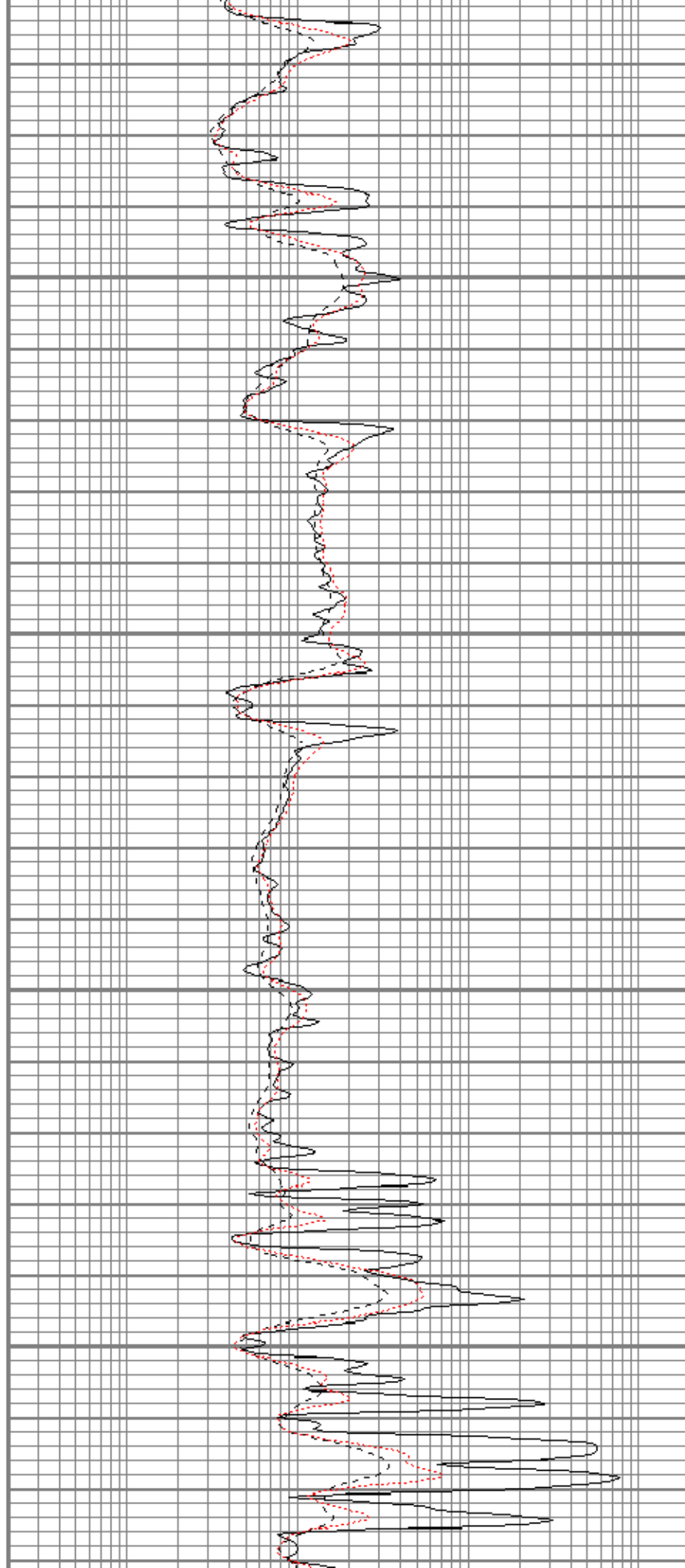


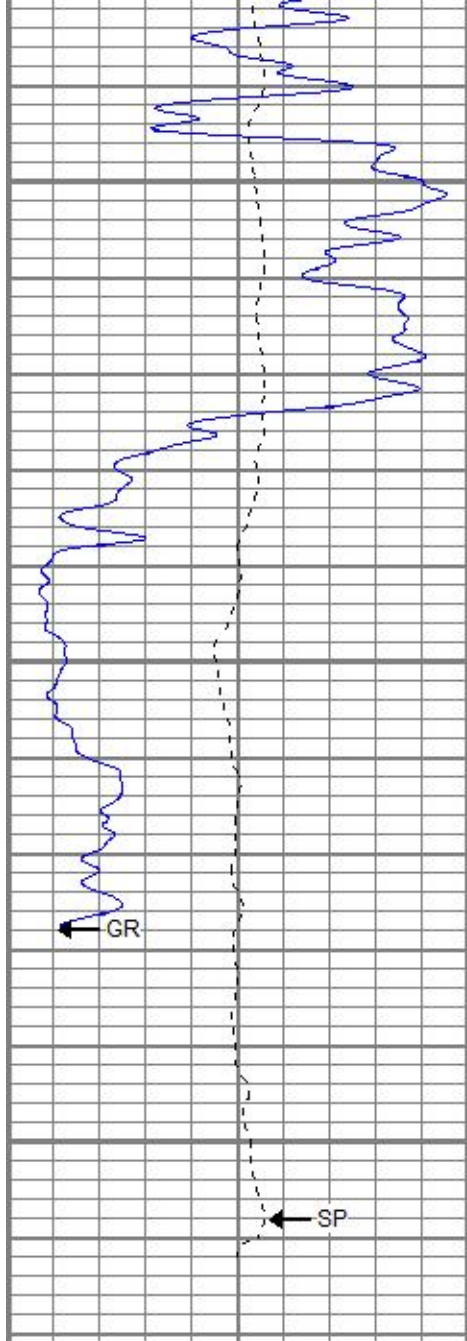
4150

4200

4250

4300





4350

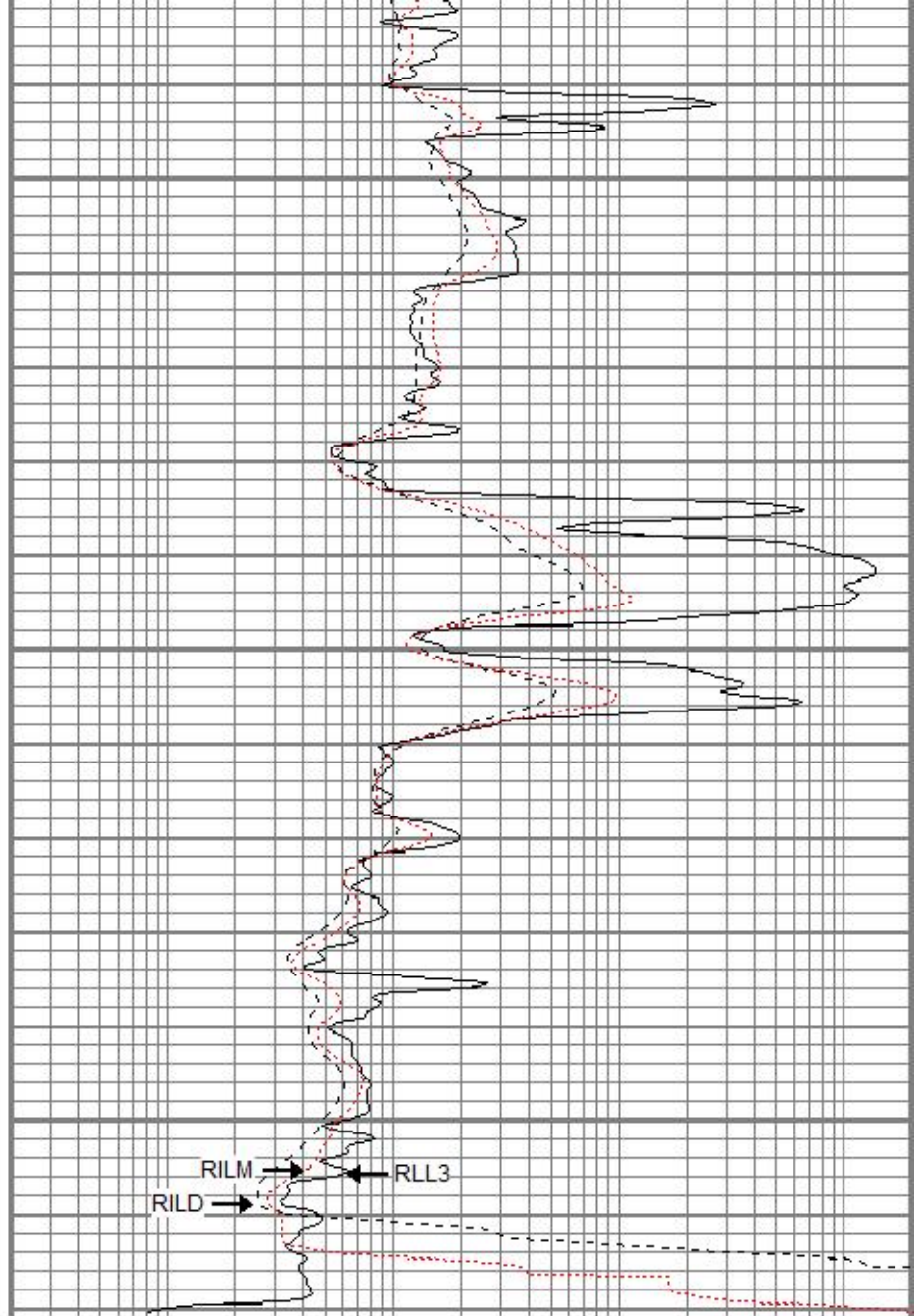
4400

4450

GR

SP

0	GR (GAPI)	150
-100	SP (mV)	100



RILM
RILD

RLL3

0.2	RILD (Ohm-m)	2000
0.2	RLL3 (Ohm-m)	2000
0.2	RILM (Ohm-m)	2000



REPEAT SECTION

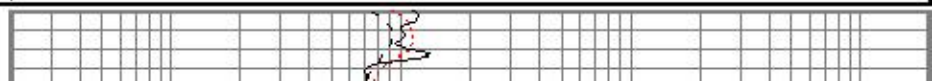
Database File ppbutterfield#3oh.db
 Dataset Pathname pass1
 Presentation Format kdil
 Dataset Creation Sat Nov 24 02:22:07 2018
 Charted by Depth in Feet scaled 1:240

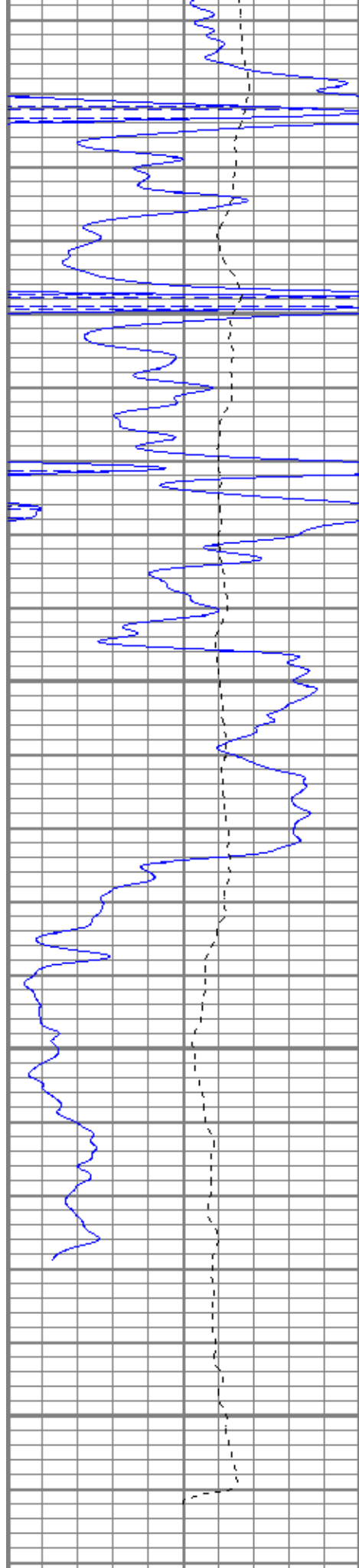
0	GR (GAPI)	150
-100	SP (mV)	100

0.2	RILD (Ohm-m)	2000
0.2	RLL3 (Ohm-m)	2000
0.2	RILM (Ohm-m)	2000



4200





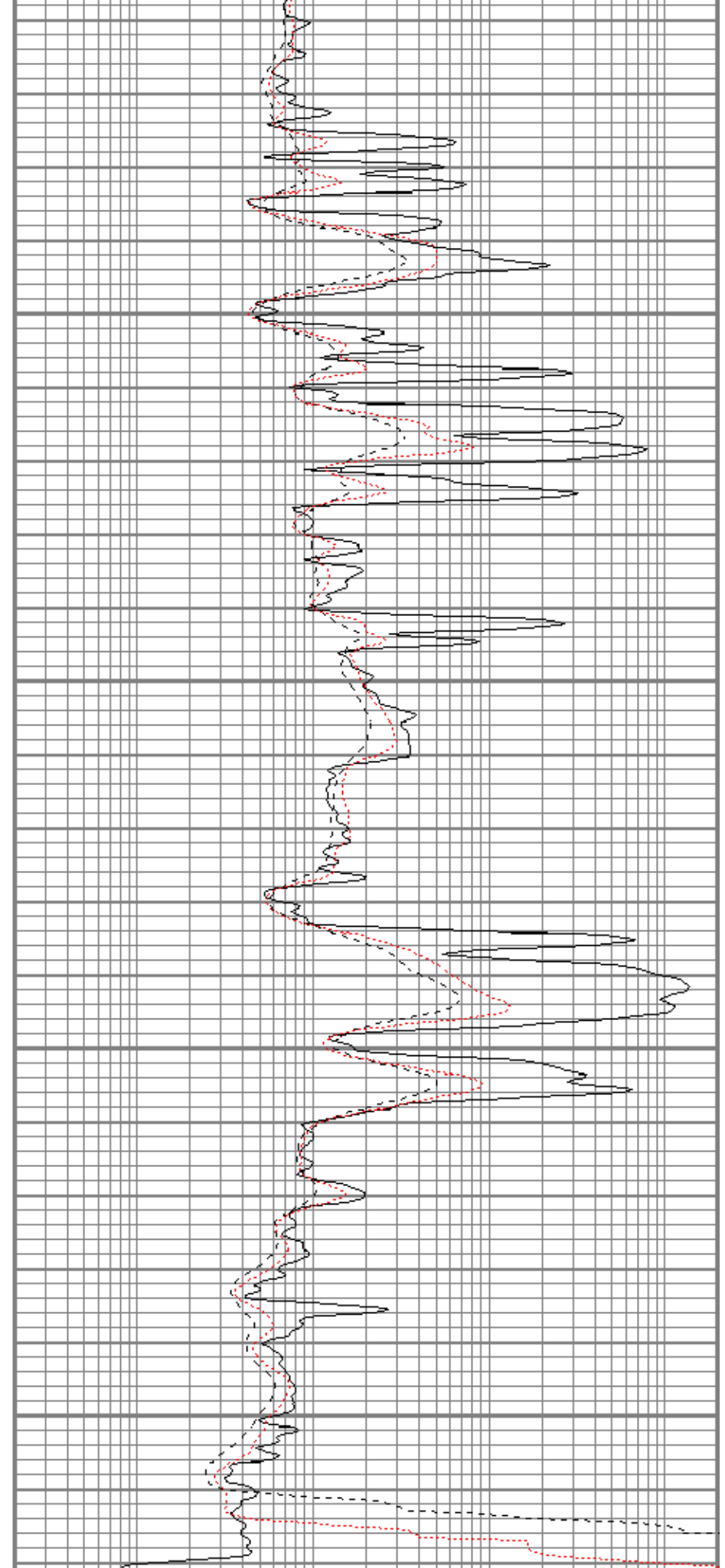
4300

4350

4400

4450

0	GR (GAPI)	150
100	GR (cp/L)	100



0.2	RILD (Ohm-m)	2000
0.2	RIL2 (Ohm-m)	2000

High Reference: 1.00 degF 1.00 degF

Gain: 1.00
 Offset: 0.00
 Delta Spacing 1

Inclinometer Calibration Report

Performed:	Thu Oct 25 16:29:34 2018				
	Low Read.	High Read.	Low Ref.	High Ref.	
X Accelerometer	205.00	1843.00	-1.00	1.00	gee
Y Accelerometer	205.00	1843.00	-1.00	1.00	gee
Z Accelerometer					gee

Gamma Ray Calibration Report

Serial Number:	WithOutMC	
Tool Model:	WOMC	
Performed:	Wed Dec 06 22:30:58 2017	
Calibrator Value:	1.0	GAPI
Background Reading:	0.0	cps
Calibrator Reading:	1.0	cps
Sensitivity:	1.0000	GAPI/cps

Sensor	Offset (ft)	Schematic	Description	Length (ft)	O.D. (in)	Weight (lb)
GR	40.07		CHD-STD	0.50	1.69	1.00
ACCY	38.91		ADT-WOMC (WithOutMC) Telemetry Without Mud Cell	4.58	3.50	120.00
ACCX	38.91					
SSTAT	38.49					
PSTAT	37.66					
ASTAT	37.66					
GRD	36.82		NEU-lithogearhart (2017)	5.65	3.50	85.00
TEMP	36.82					
NEU	33.46					
LStat	24.30		ADT1LITH-A (1) Admyr Litho Density Tool	9.29	3.50	240.00
LS8	23.64					
LS7	23.64					
LS6	23.64					
LS5	23.64					
LS4	23.64					
LS3	23.64					
LS2	23.64					
LS1	23.64					
LSV	23.64					
LSD	23.62					
SSV	23.43					

SS8	23.43		DIL-G (5375) Gearhart	21.47	4.00	345.00
SS7	23.43					
SS6	23.43					
SS5	23.43					
SS4	23.43					
SS3	23.43					
SS2	23.43					
SS1	23.43					
DCAL	23.37					
SSD	23.04					
SP	10.60					
CILD	10.60					
CILM	6.89					
RLL3	1.70					
TR_Mon	0.00					

Dataset: ppbutterfield#3oh.db: field/well/run1/pass2
 Total length: 41.49 ft
 Total weight: 791.00 lb
 O.D.: 4.00 in