



SONIC LOG

Company SHELBY RESOURCES, LLC.
 Well BORCK UNIT #1-25
 Field N/A
 County PAWNEE
 State KANSAS

Company SHELBY RESOURCES, LLC.
 Well BORCK UNIT #1-25
 Field N/A
 County PAWNEE State KANSAS

Location: API # : 15-145-21843-00-00
 1024 FSL & 2521 FEL
 SEC 25 TWP 21S RGE 16W
 Permanent Datum GROUND LEVEL Elevation 1970'
 Log Measured From KELLY BUSHING 11' A.G.L.
 Drilling Measured From KELLY BUSHING
 Other Services CDL/CNL/DIL ML
 Elevation K.B. 1981
 D.F. 1979
 G.L. 1970

Date	12/11/18
Run Number	TWO
Depth Driller	3980
Depth Logger	3980
Bottom Logged Interval	3971
Top Log Interval	00
Casing Driller	8 5/8@ 975
Casing Logger	975
Bit Size	7 7/8"
Type Fluid in Hole	CHEMICAL MUD
Density / Viscosity	9.4/64
pH / Fluid Loss	10.0/10.8
Source of Sample	FLOWLINE
Rm @ Meas. Temp	1.1@62
Rmt @ Meas. Temp	.83@62
Rmc @ Meas. Temp	1.32@62
Source of Rmf / Rmc	MEASURED
Rm @ BHT	.59@116
Time Circulation Stopped	2 HOURS
Time Logger on Bottom	///
Maximum Recorded Temperature	116F
Equipment Number	4010
Location	HAYS, KANSAS
Recorded By	GUS PFANENSTIEL
Witnessed By	JEREMY SCHWARTZ

<<< Fold Here >>>

All interpretations are opinions based on inferences from electrical or other measurements and we cannot and do not guarantee the accuracy or correctness of any interpretation, and we shall not, except in the case of gross or willful negligence on our part, be liable or responsible for any loss, costs, damages, or expenses incurred or sustained by anyone resulting from any interpretation made by any of our officers, agents or employees. These interpretations are also subject to our general terms and conditions set out in our current Price Schedule.

Comments

THANK YOU FOR USING ELI WIRELINE, HAYS, KS. (785) 628-6395

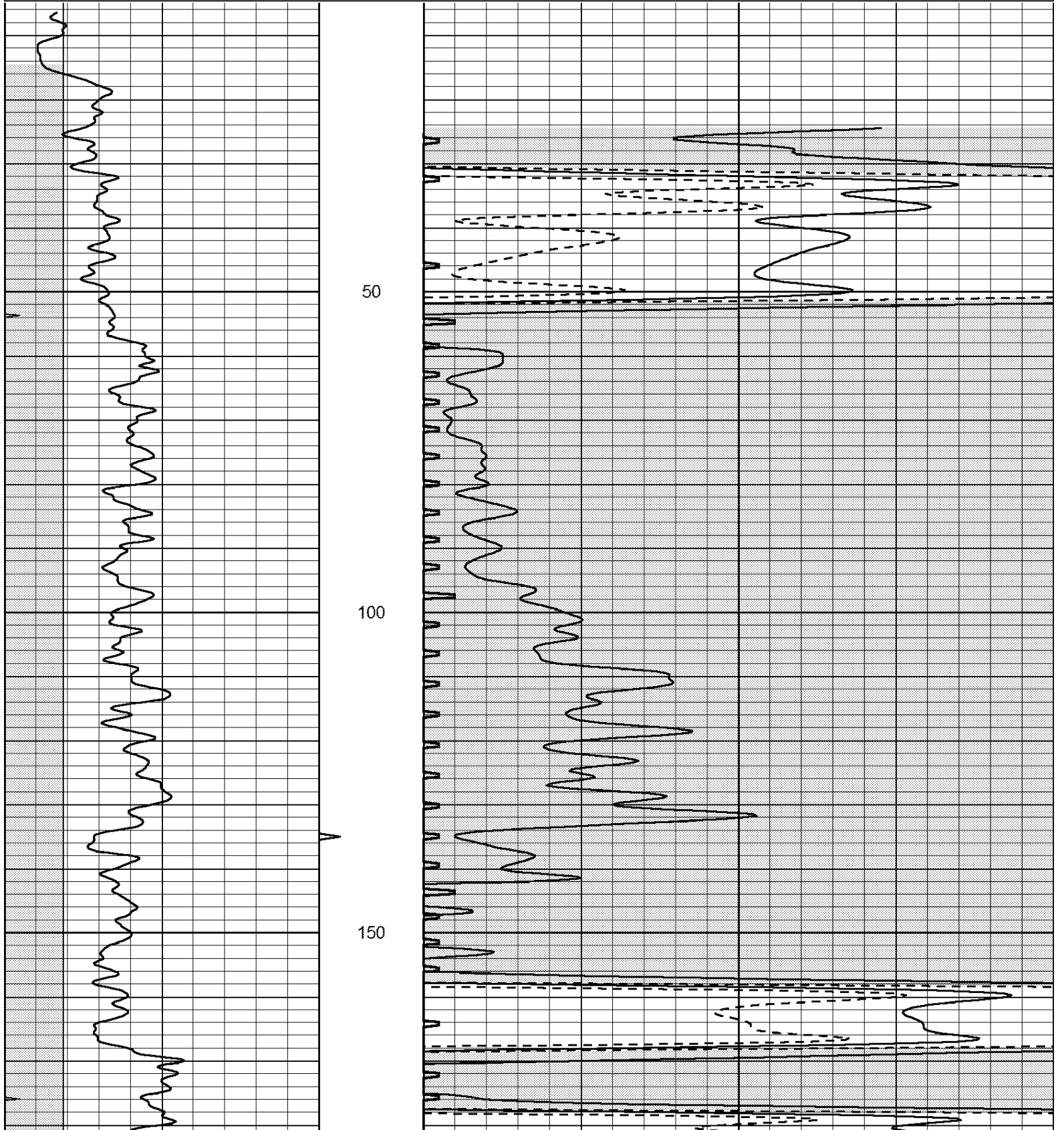
DIRECTIONS
 LARNED, HEAD NE ON HIGHWAY TILL YOU GET TO O RD.
 GO SE TO 80 TH, GO SOUTH TO DEAD IN EAST INTO.

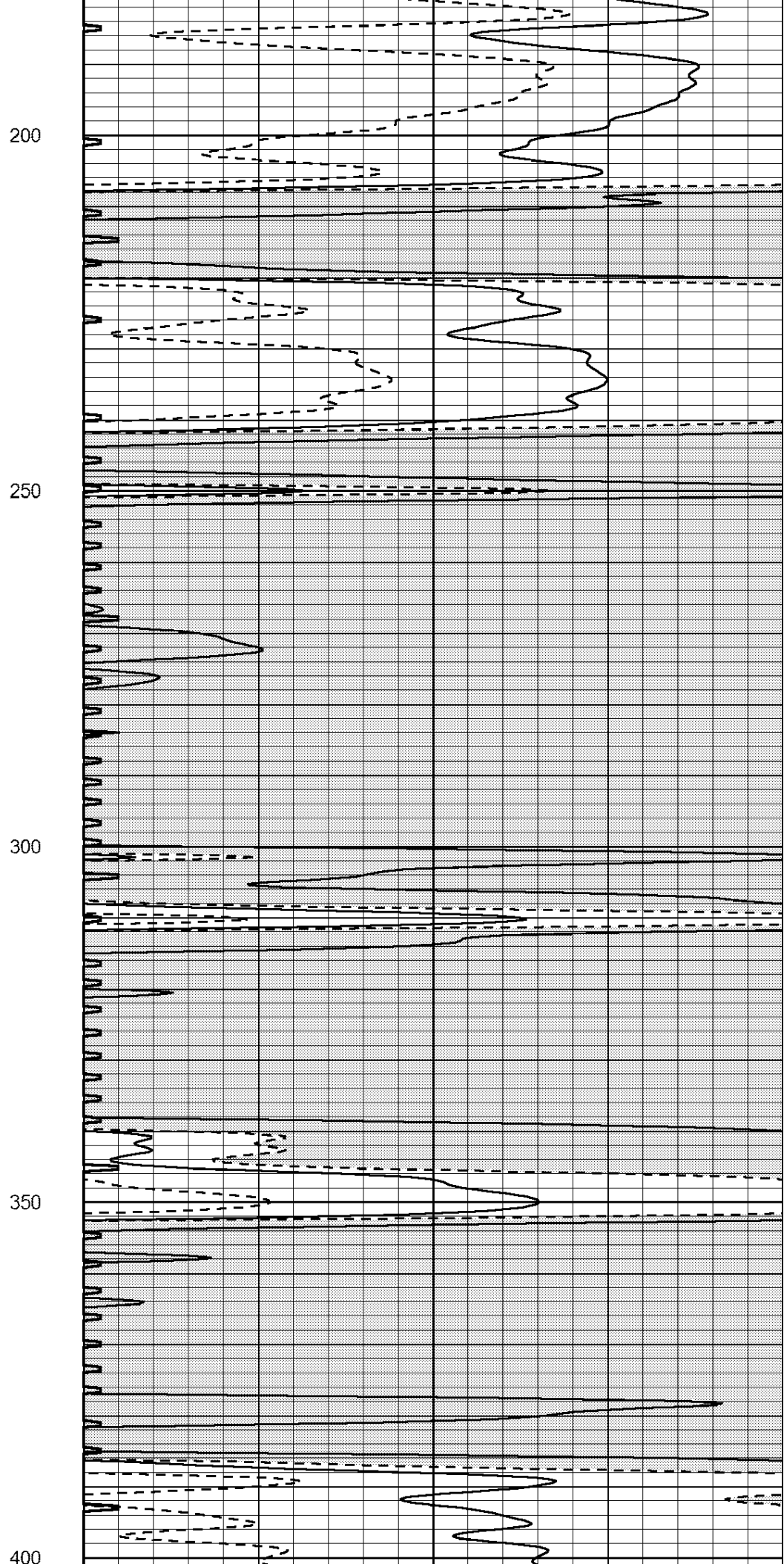
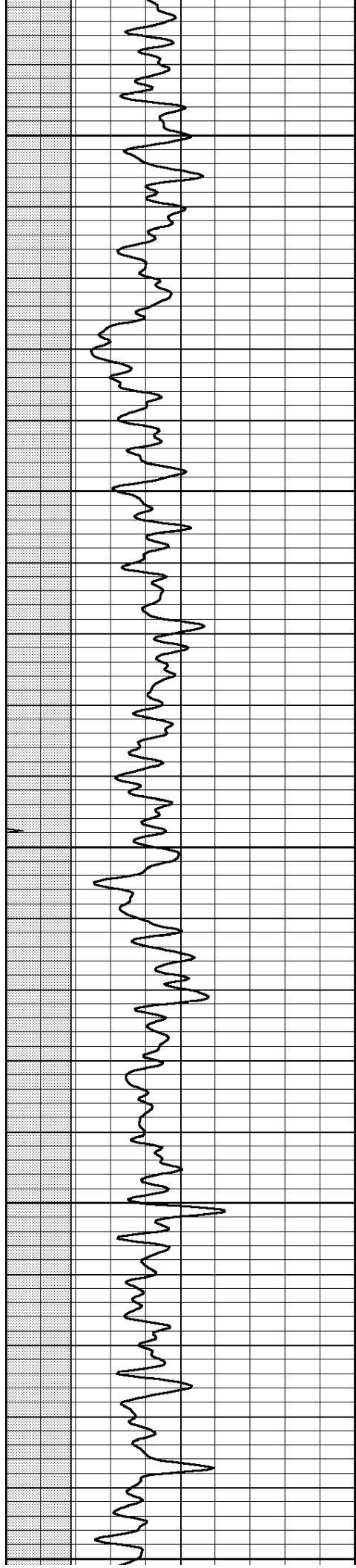


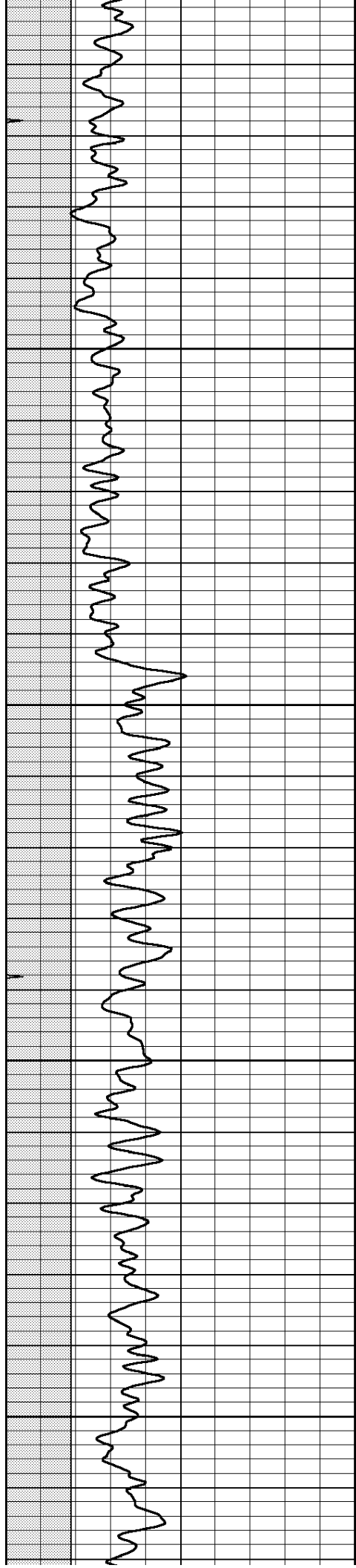
MAIN PASS

Database File: 3165ddn.db
 Dataset Pathname: pass5.1
 Presentation Format: _slt
 Dataset Creation: Tue Dec 11 19:40:42 2018 by Calc Open-Cased 090629
 Charted by: Depth in Feet scaled 1:240

0	GAMMA RAY (GAPI)	150	ABHV	140	DELTA TIME (usec/ft)	40	
6	CALIPER (in)	16	10 (ft3)	0	30	SONIC POROSITY (pu)	-10
0	MINMK	20	TBHV	0	ITT (msec)	20	
			0 (ft3)	10			





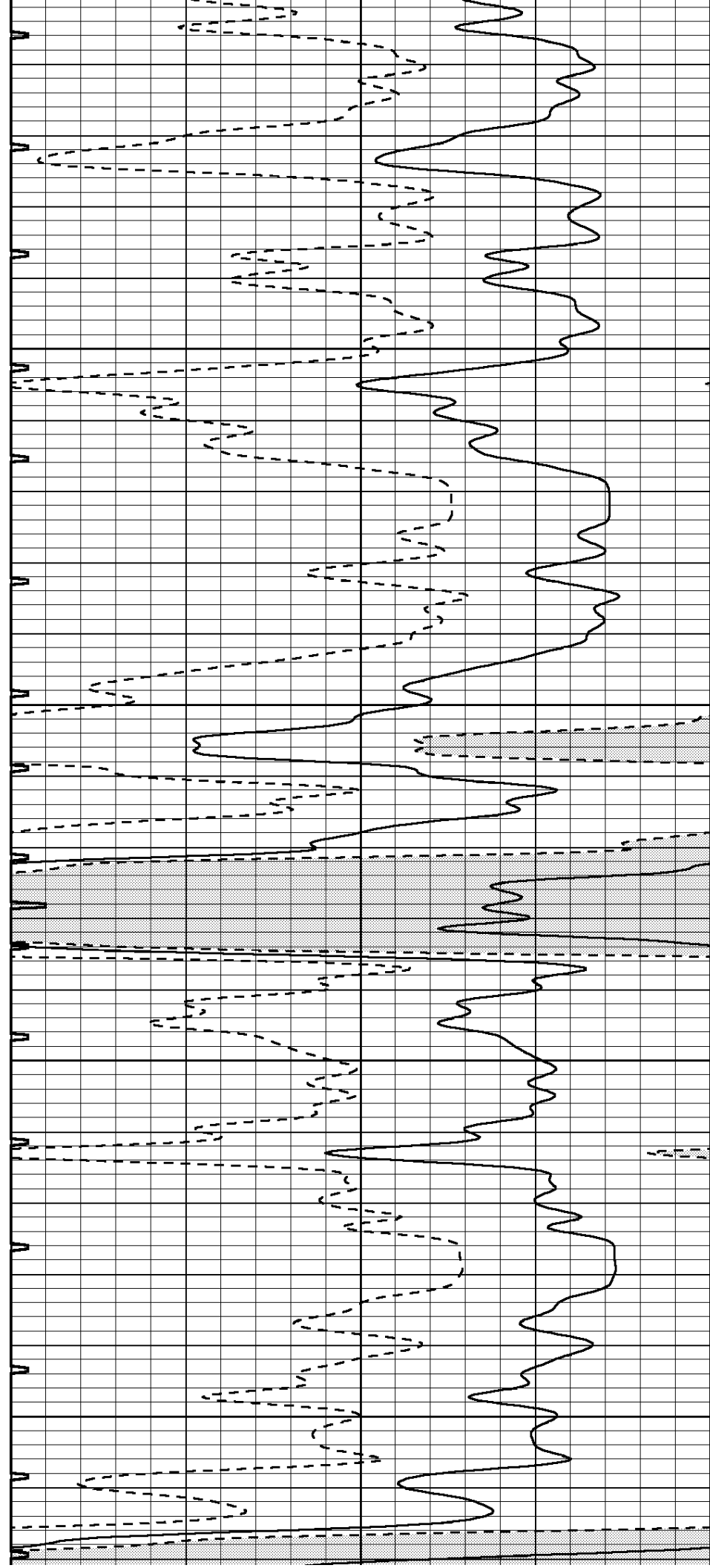


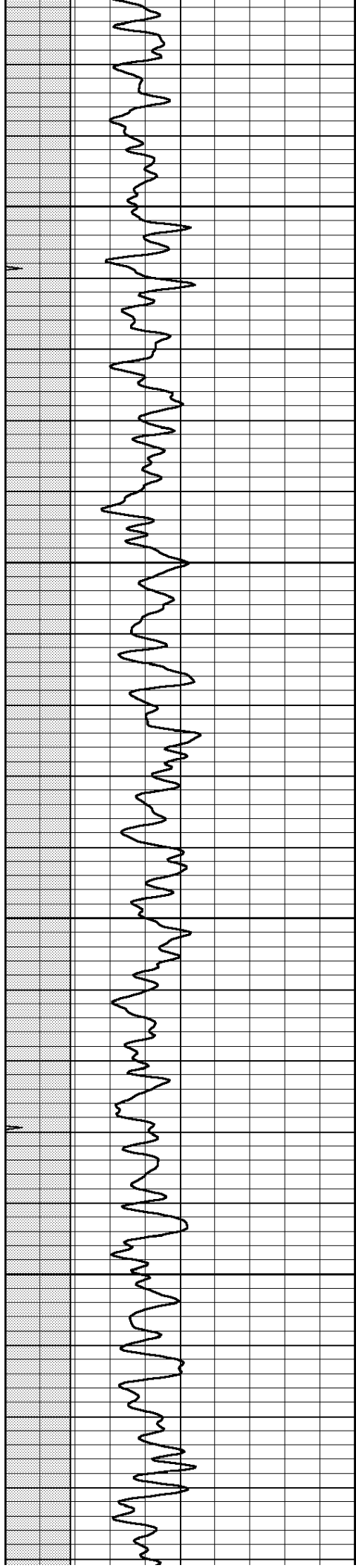
450

500

550

600



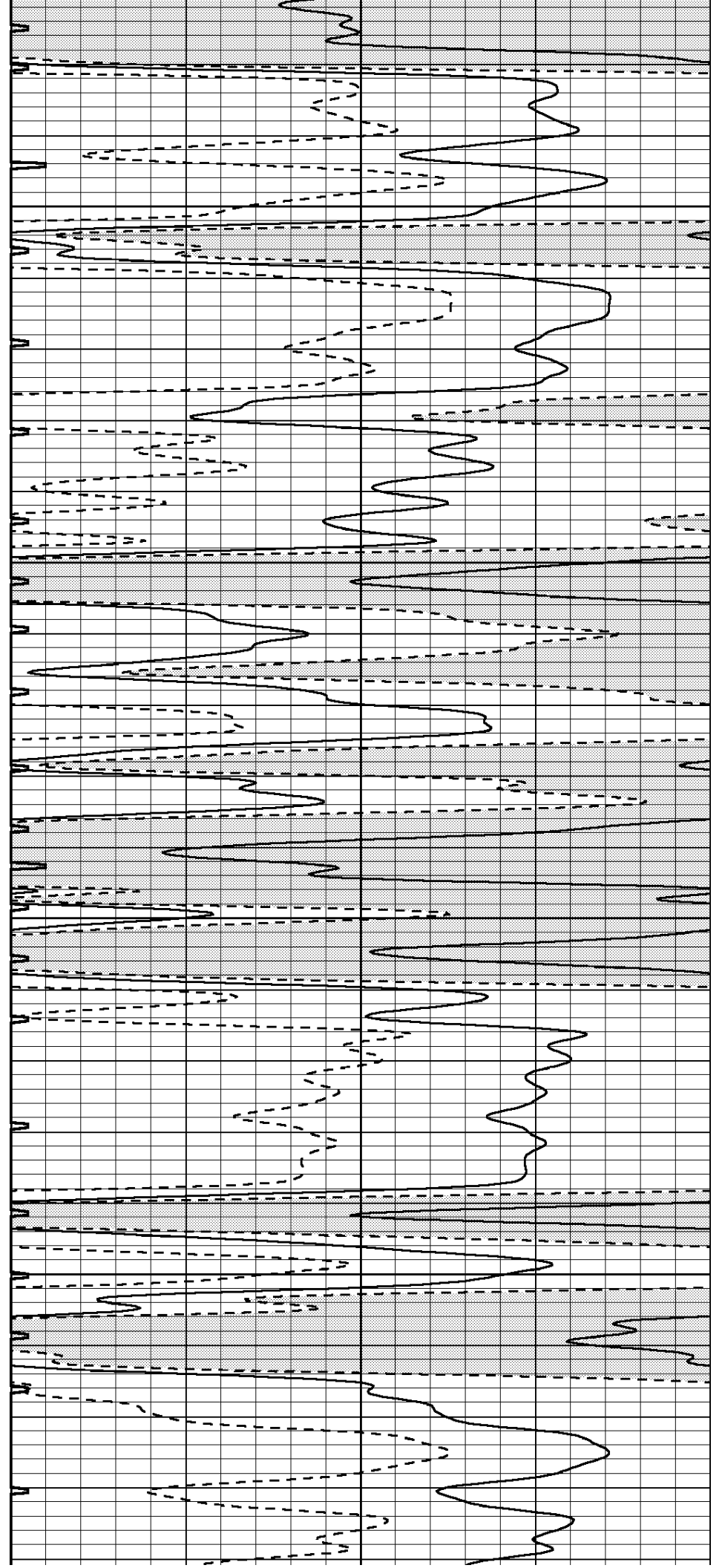


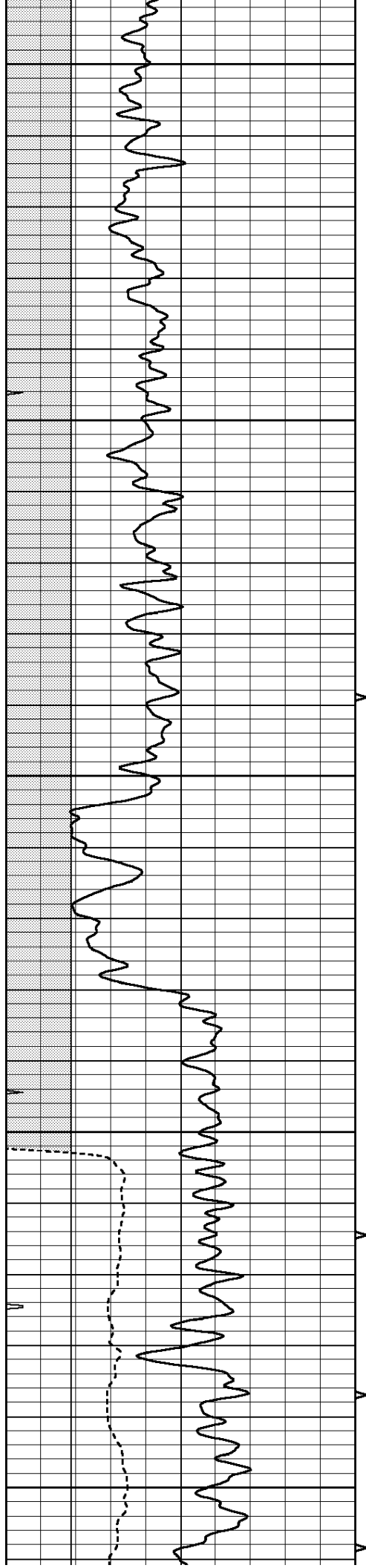
650

700

750

800





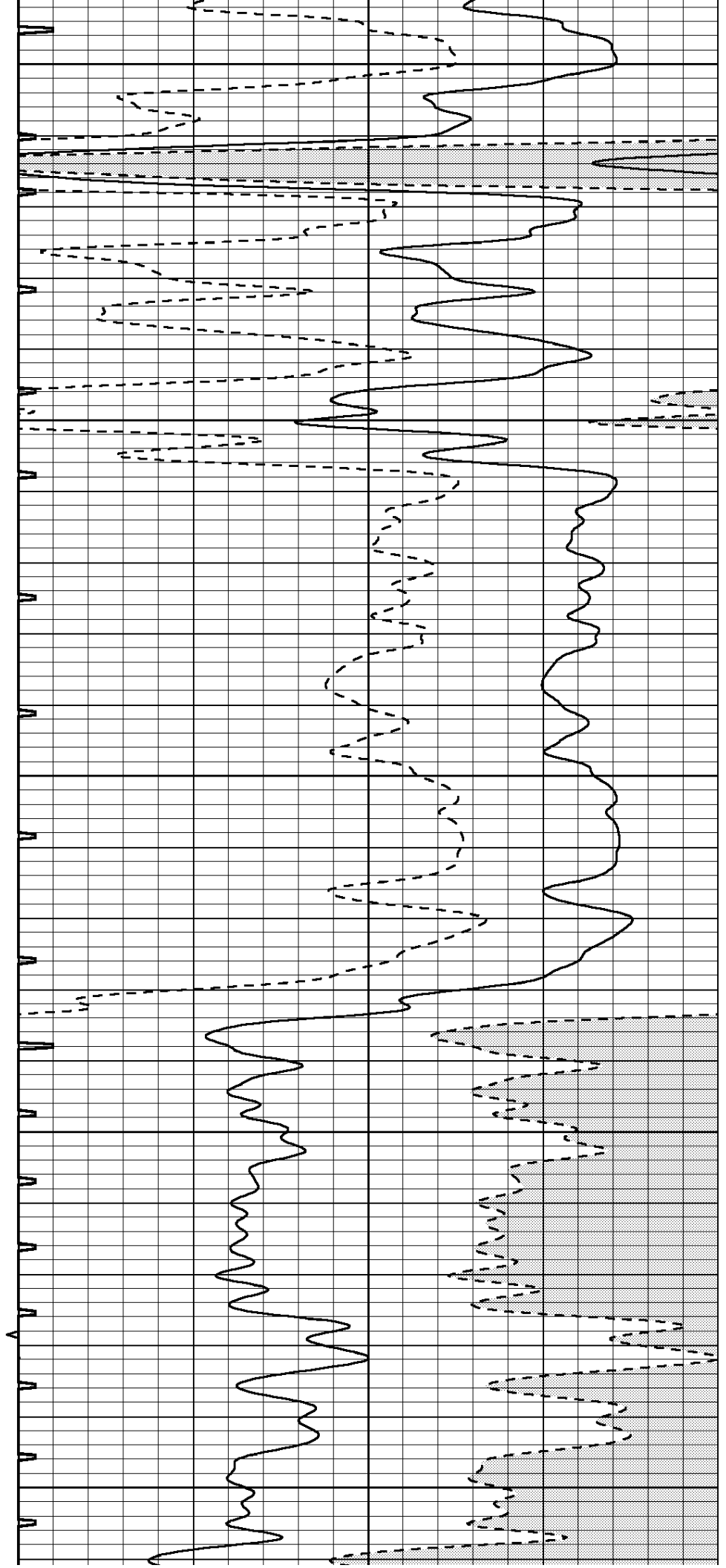
850

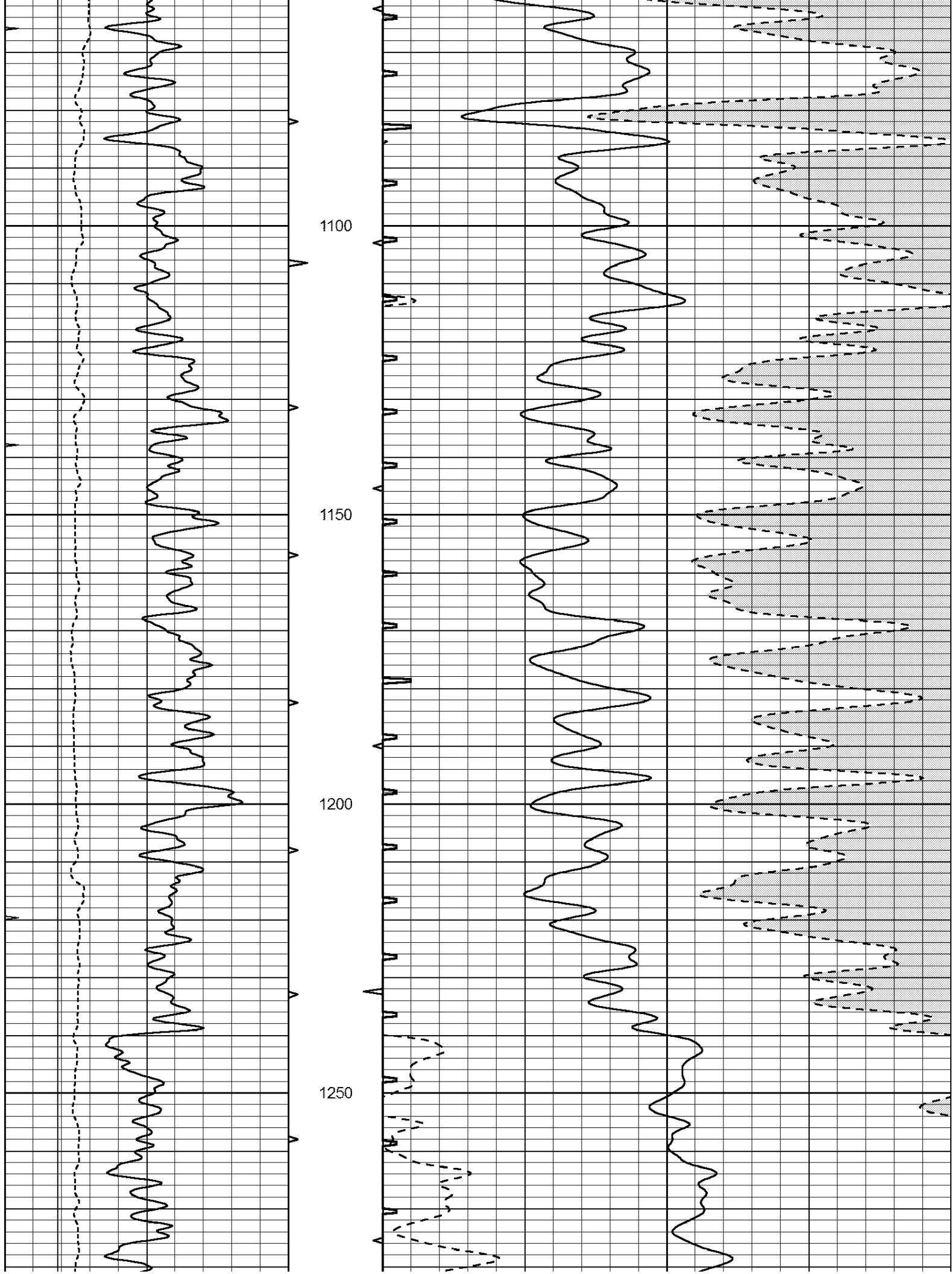
900

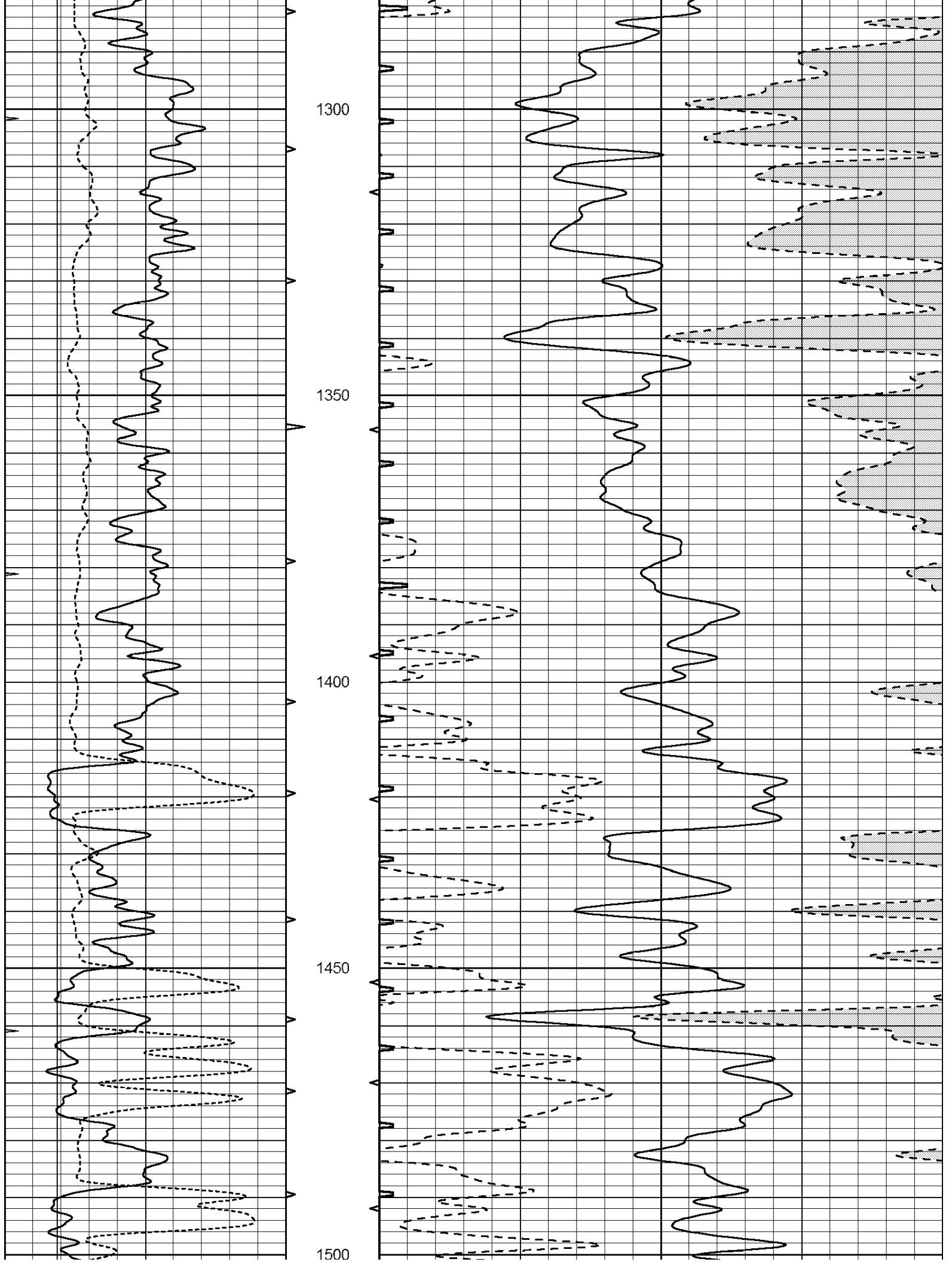
950

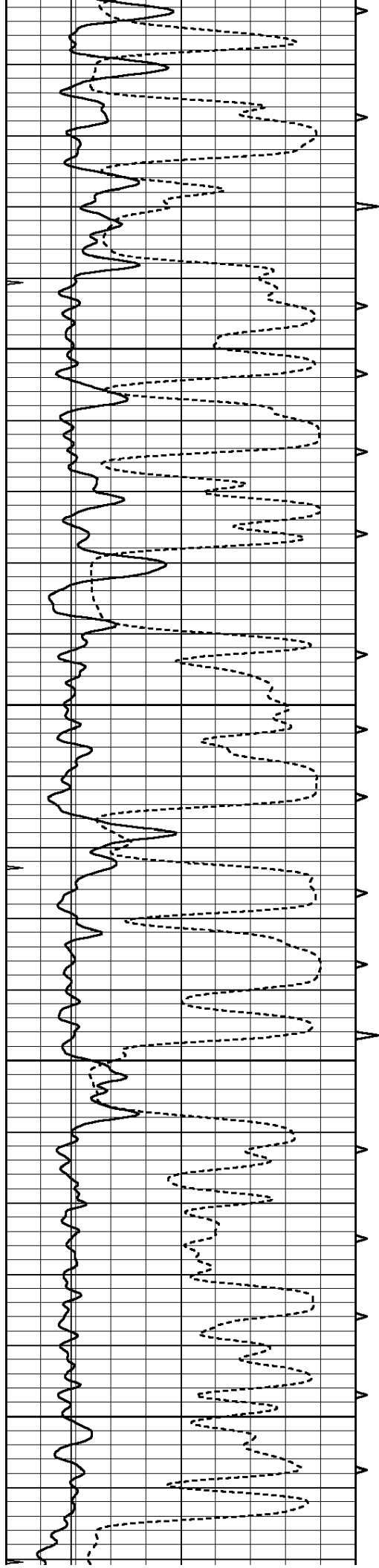
1000

1050







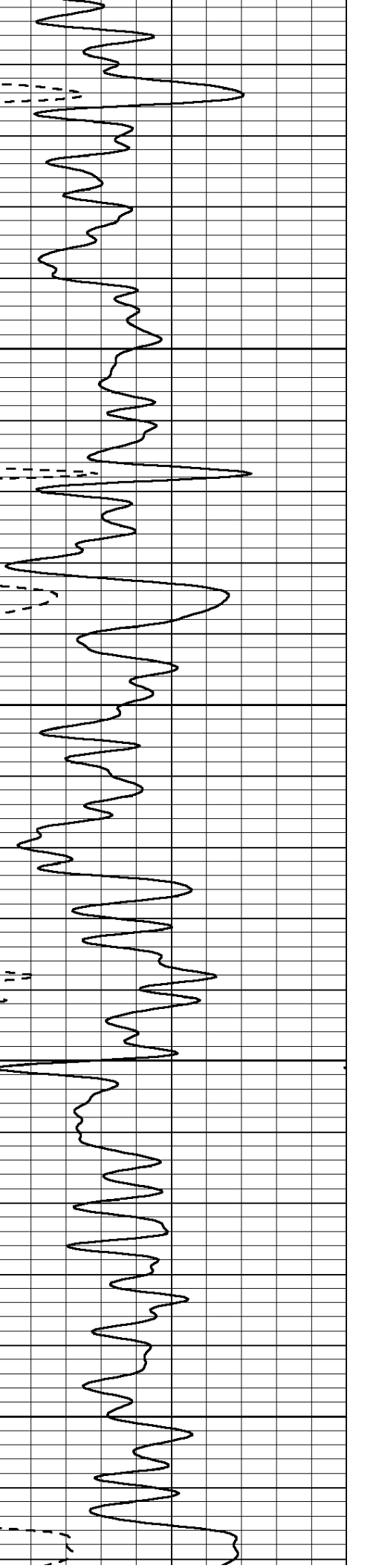
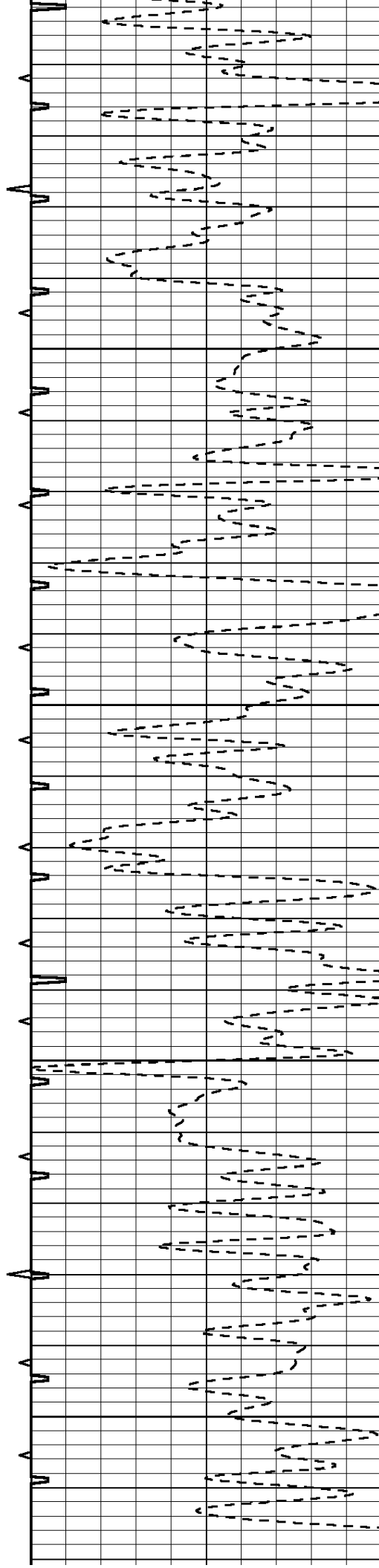


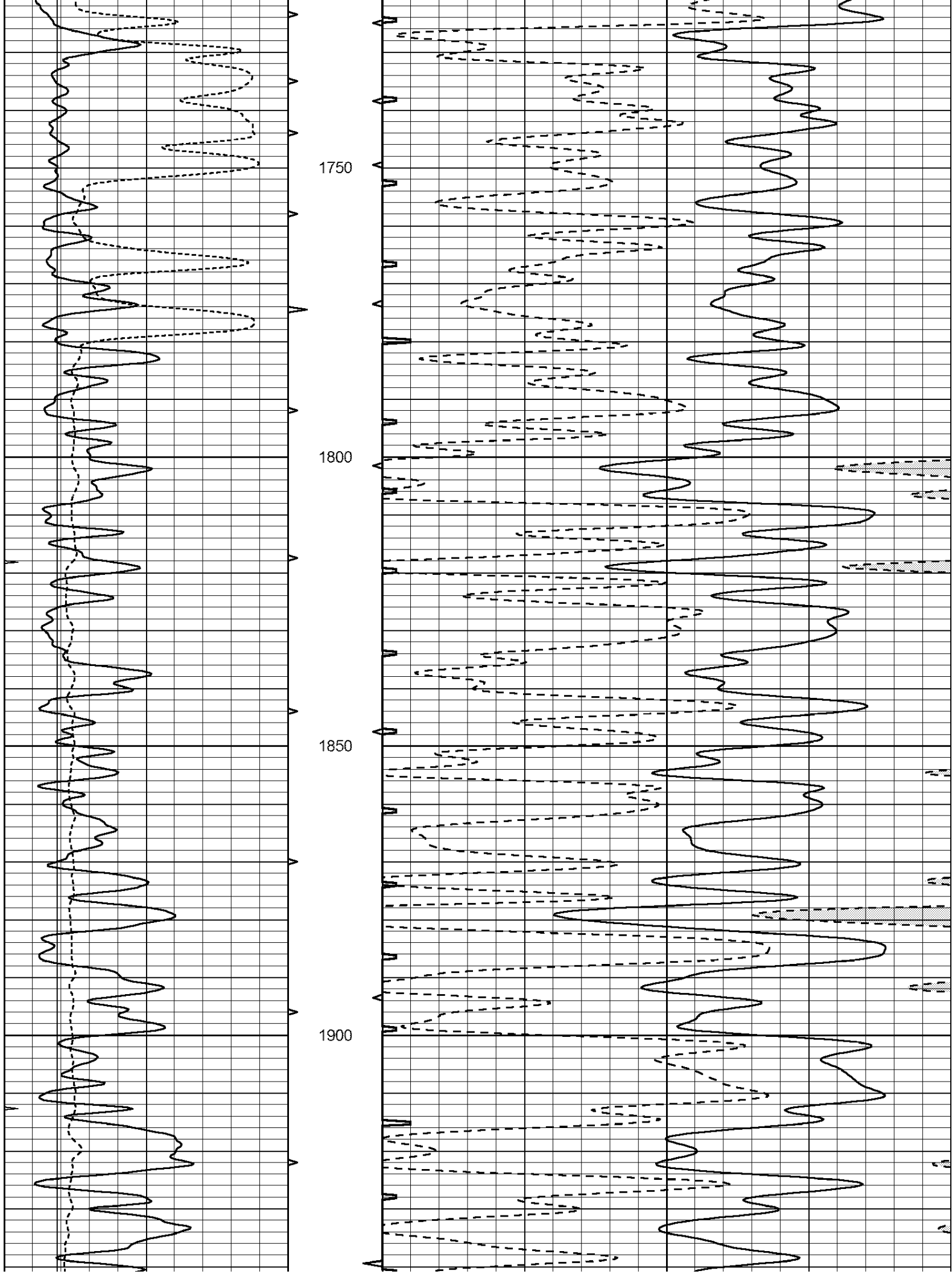
1550

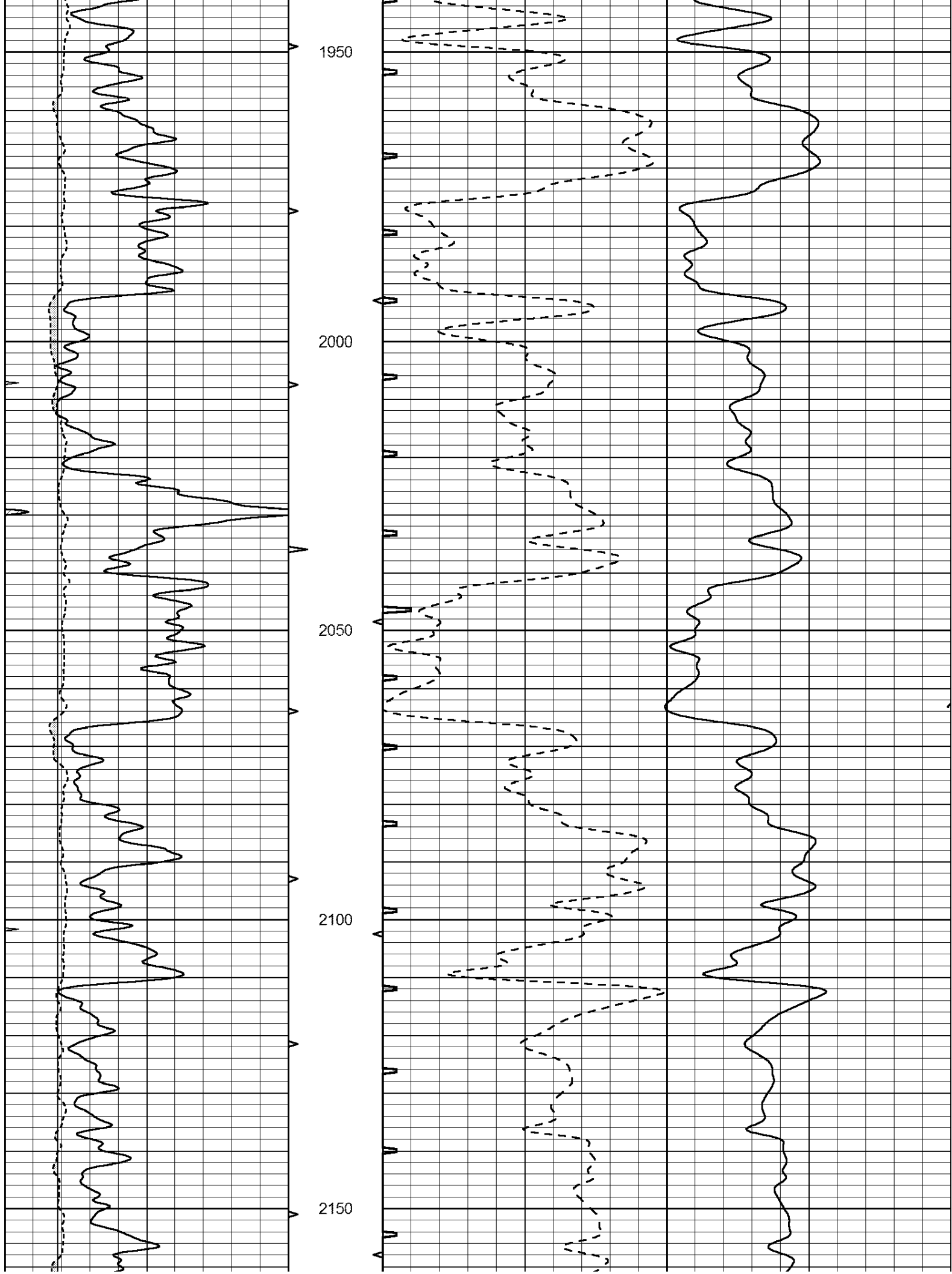
1600

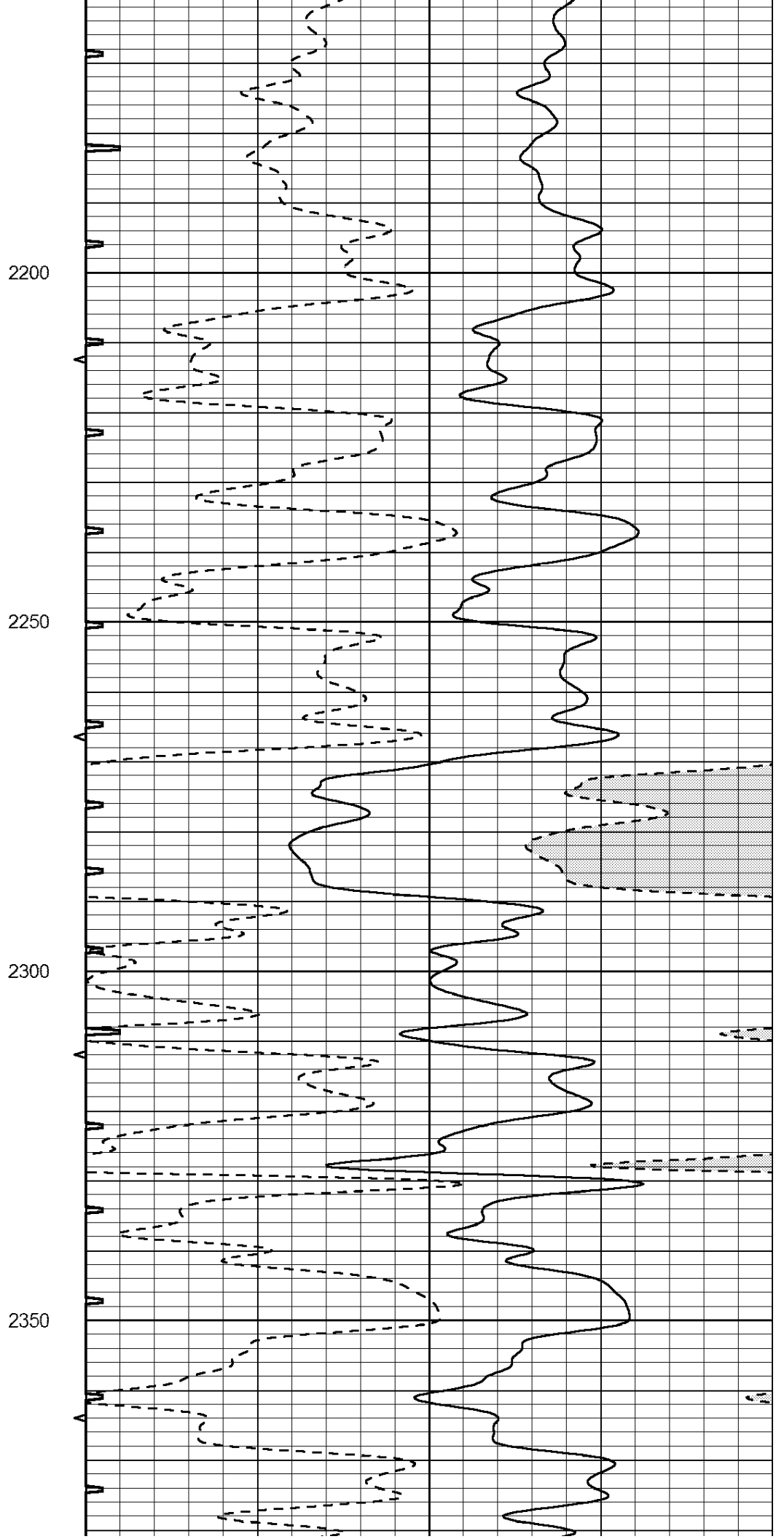
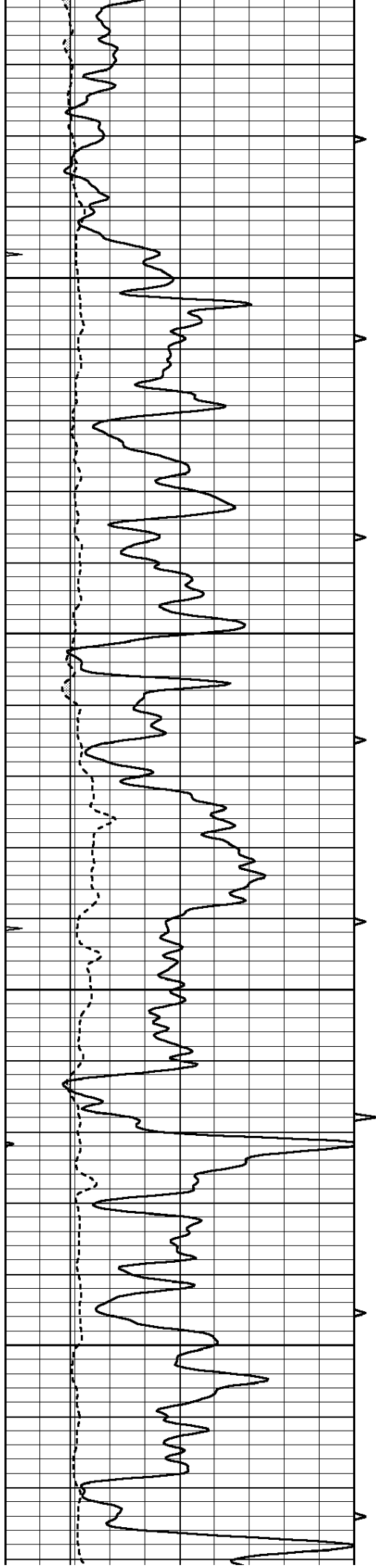
1650

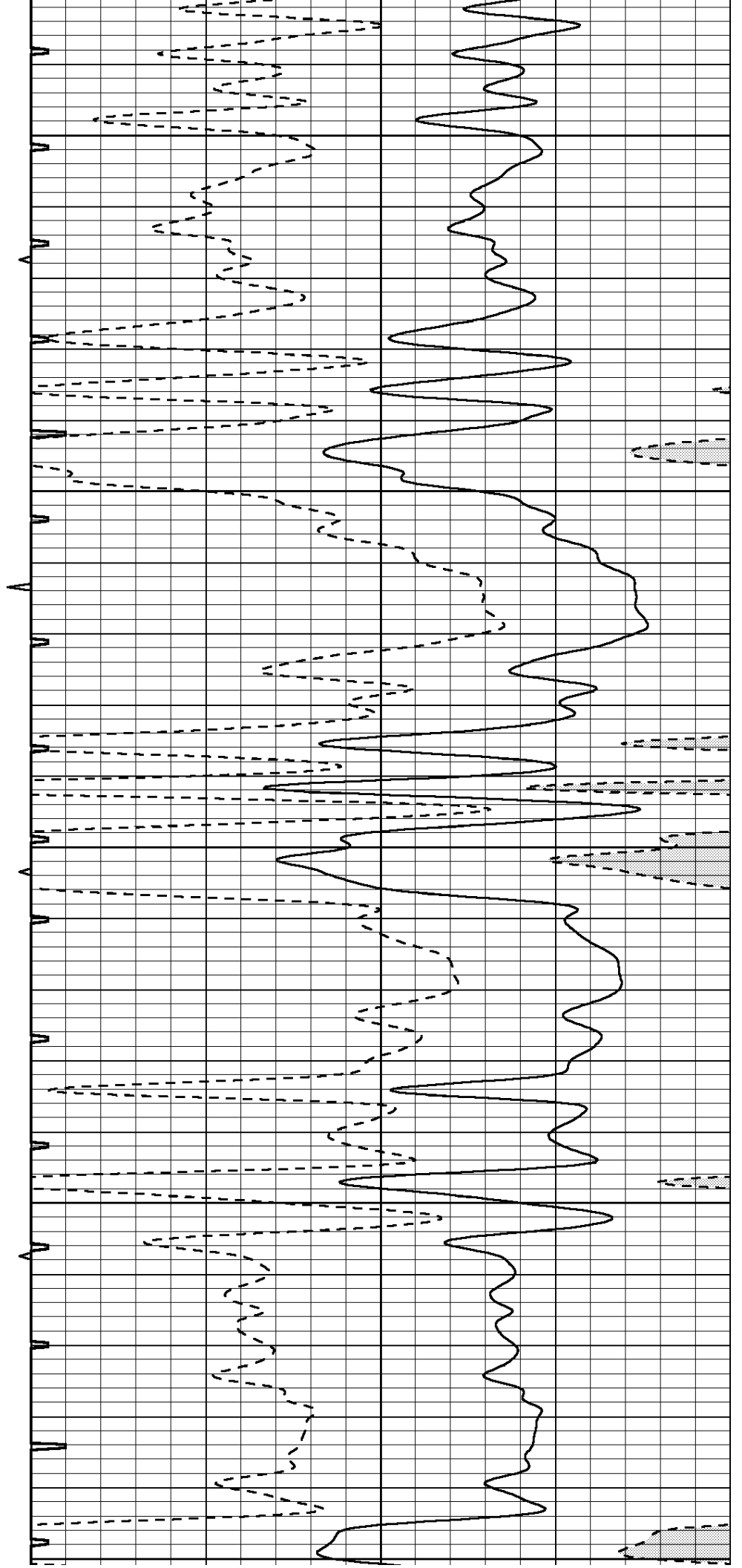
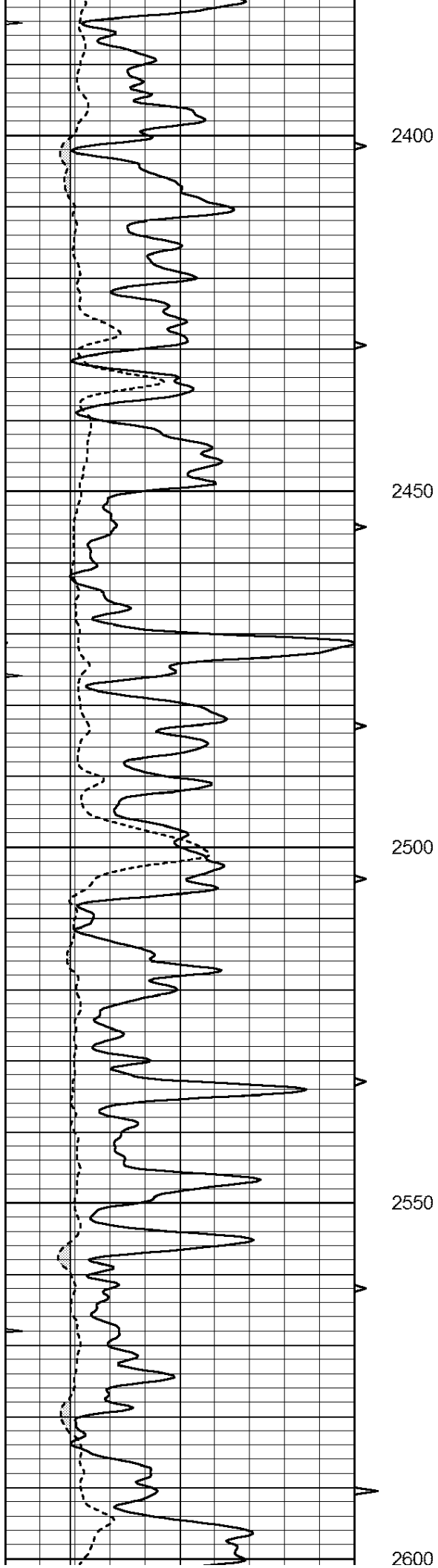
1700

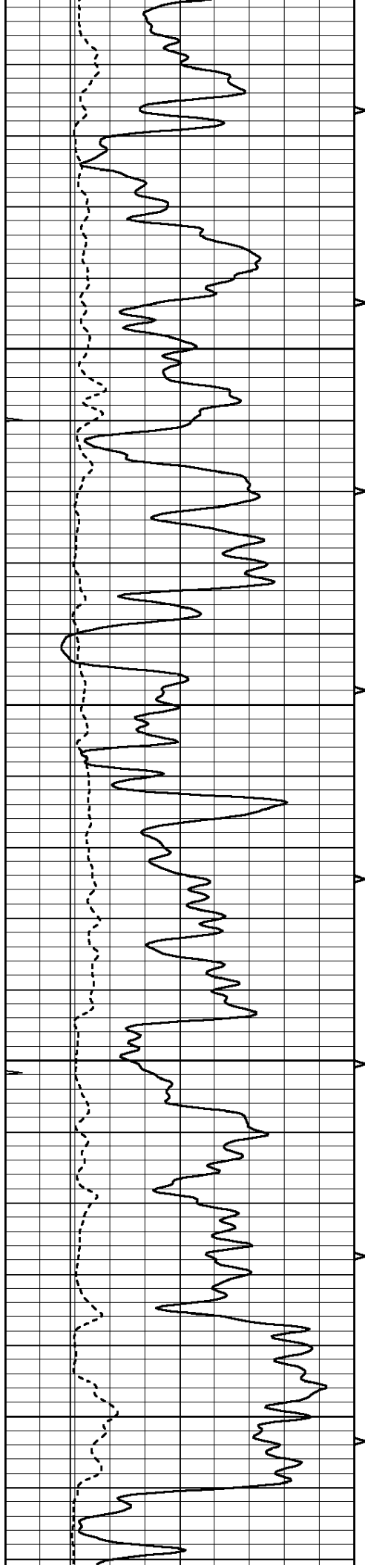










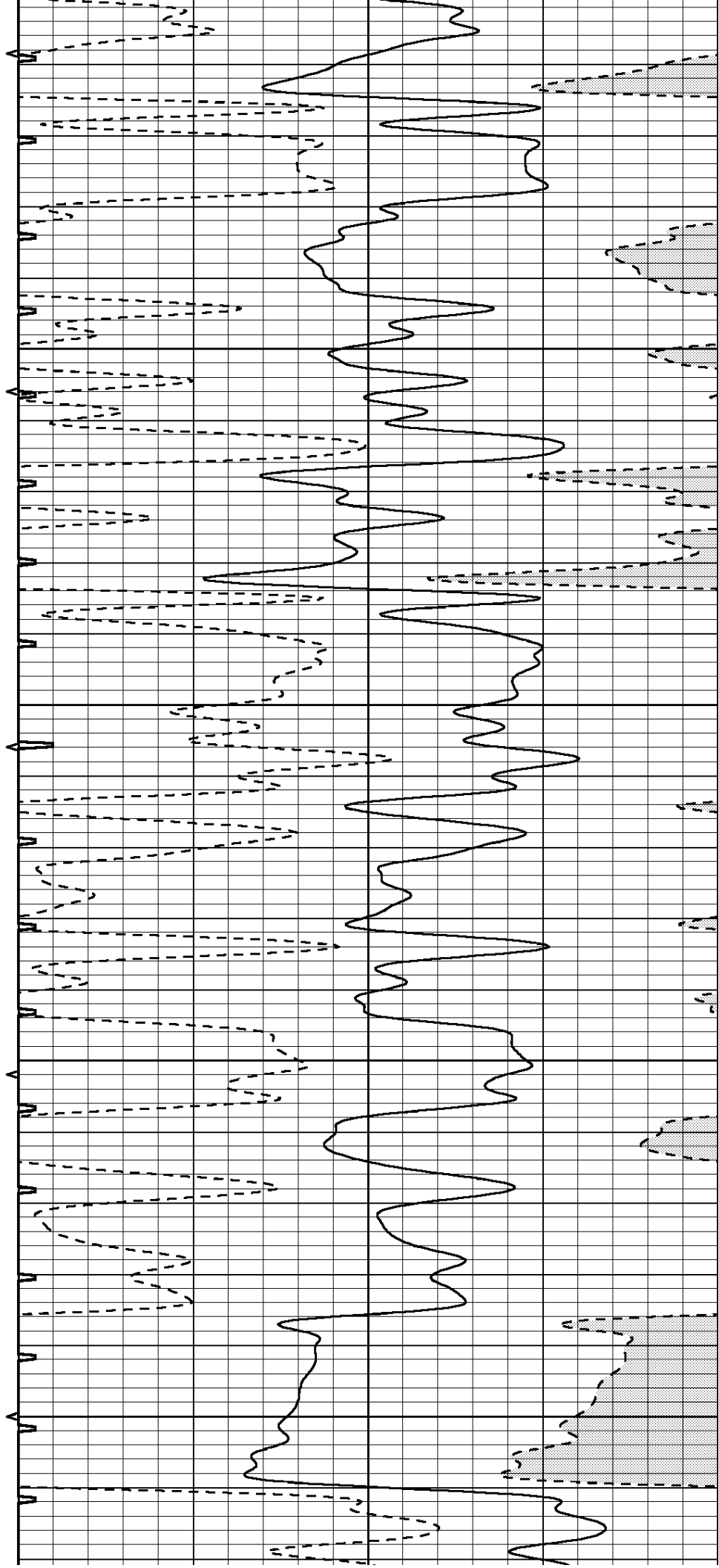


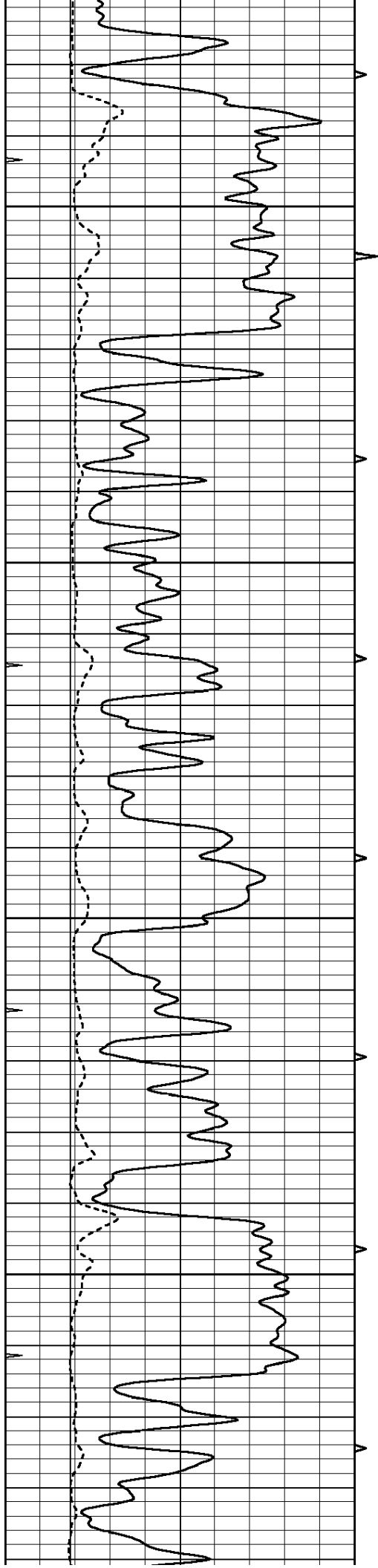
2650

2700

2750

2800



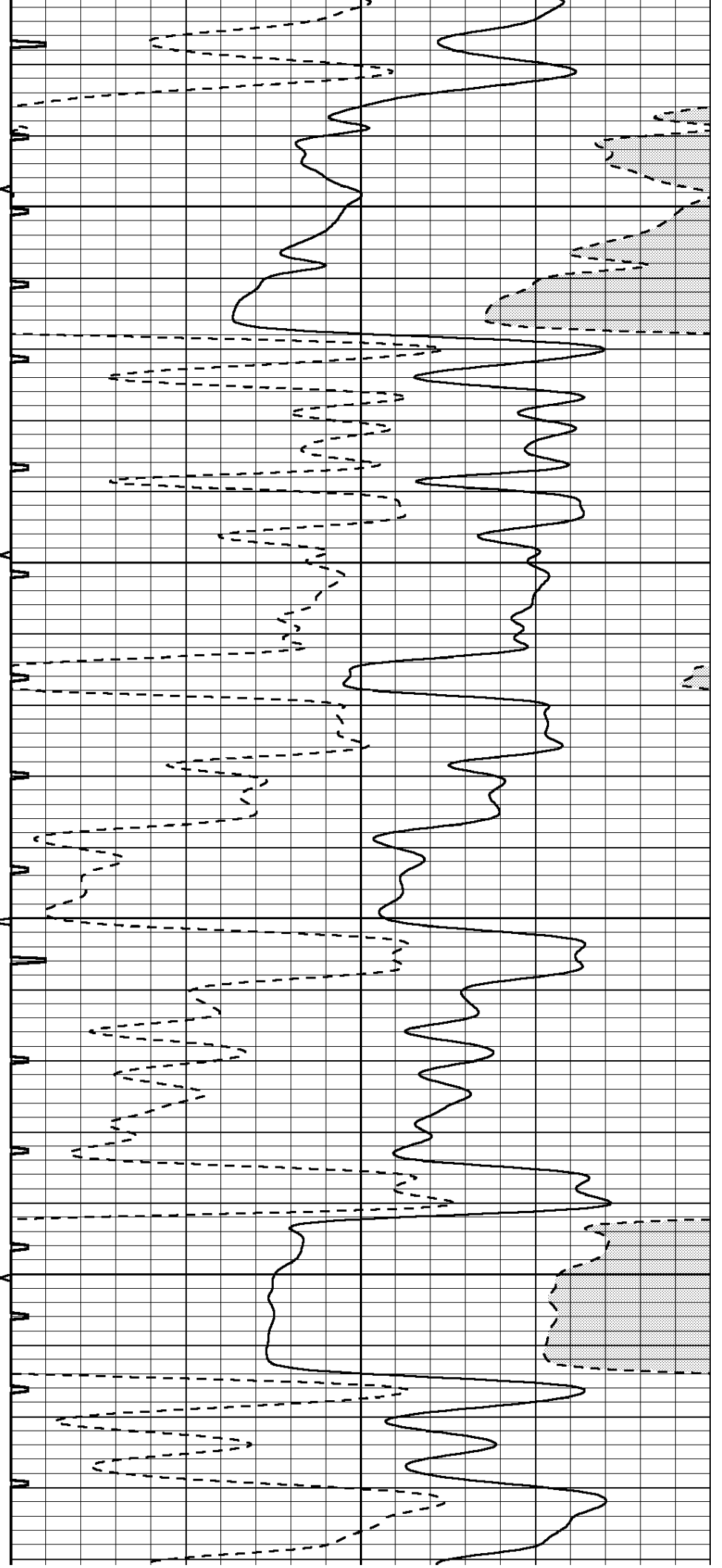


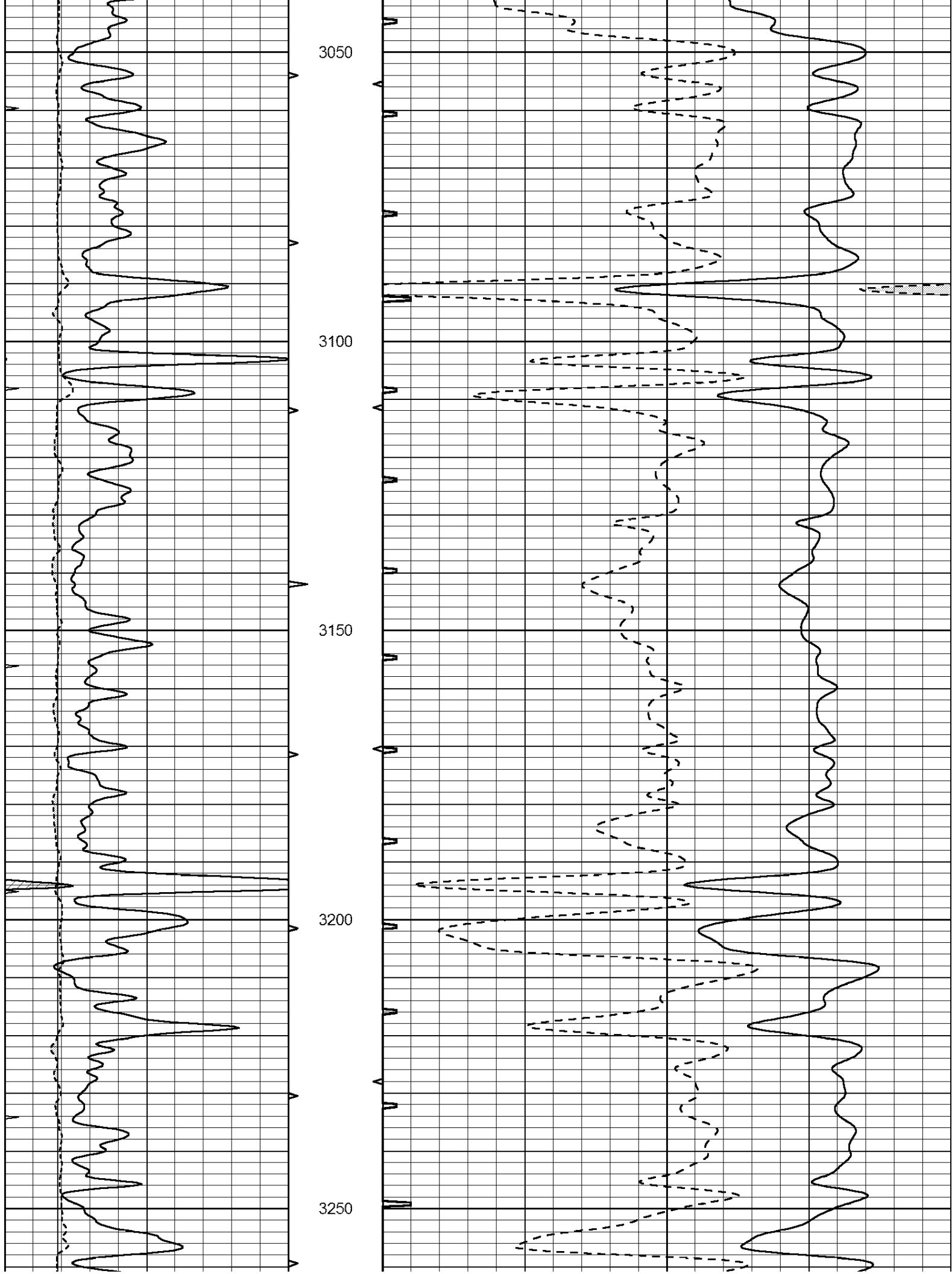
2850

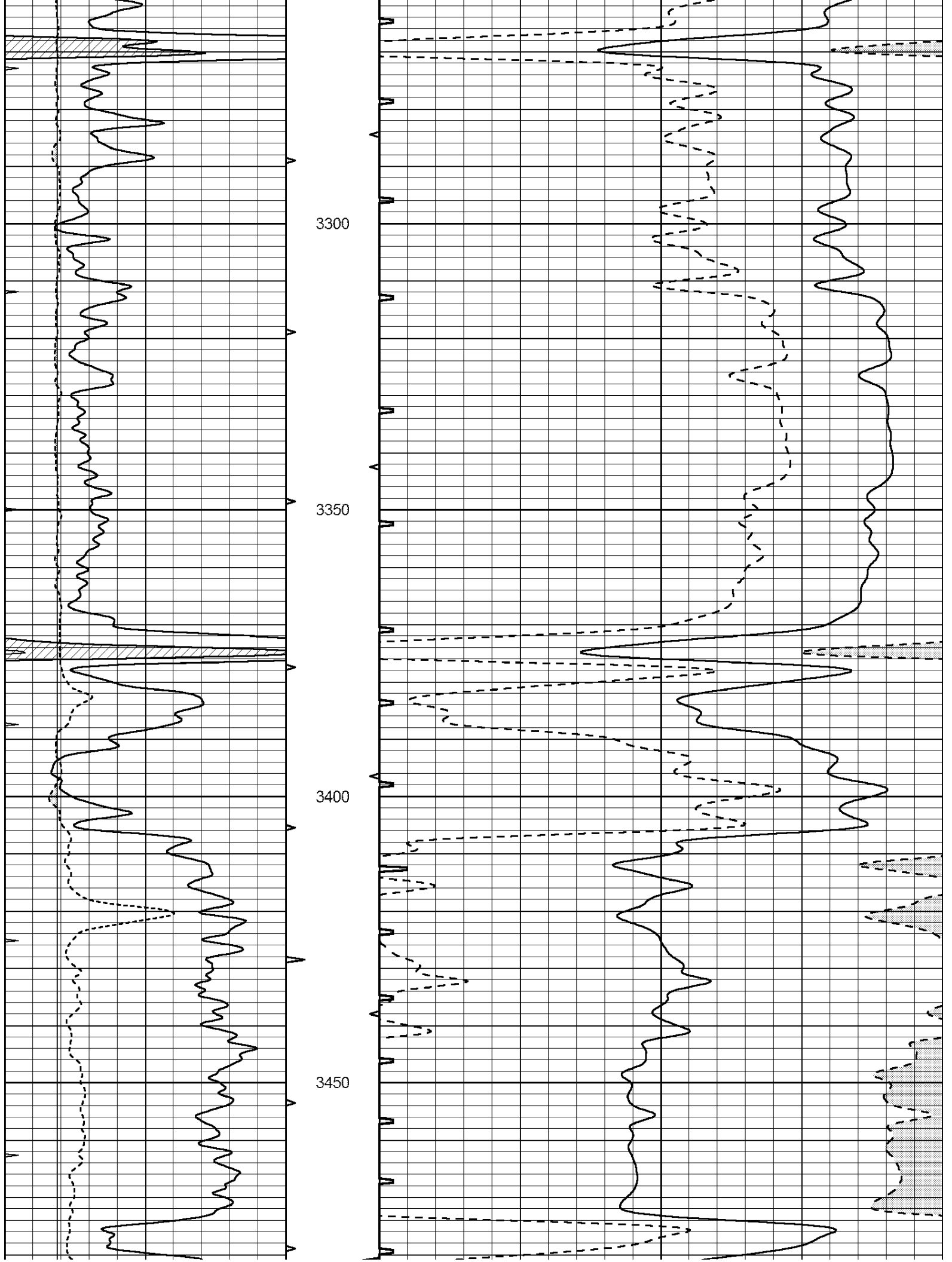
2900

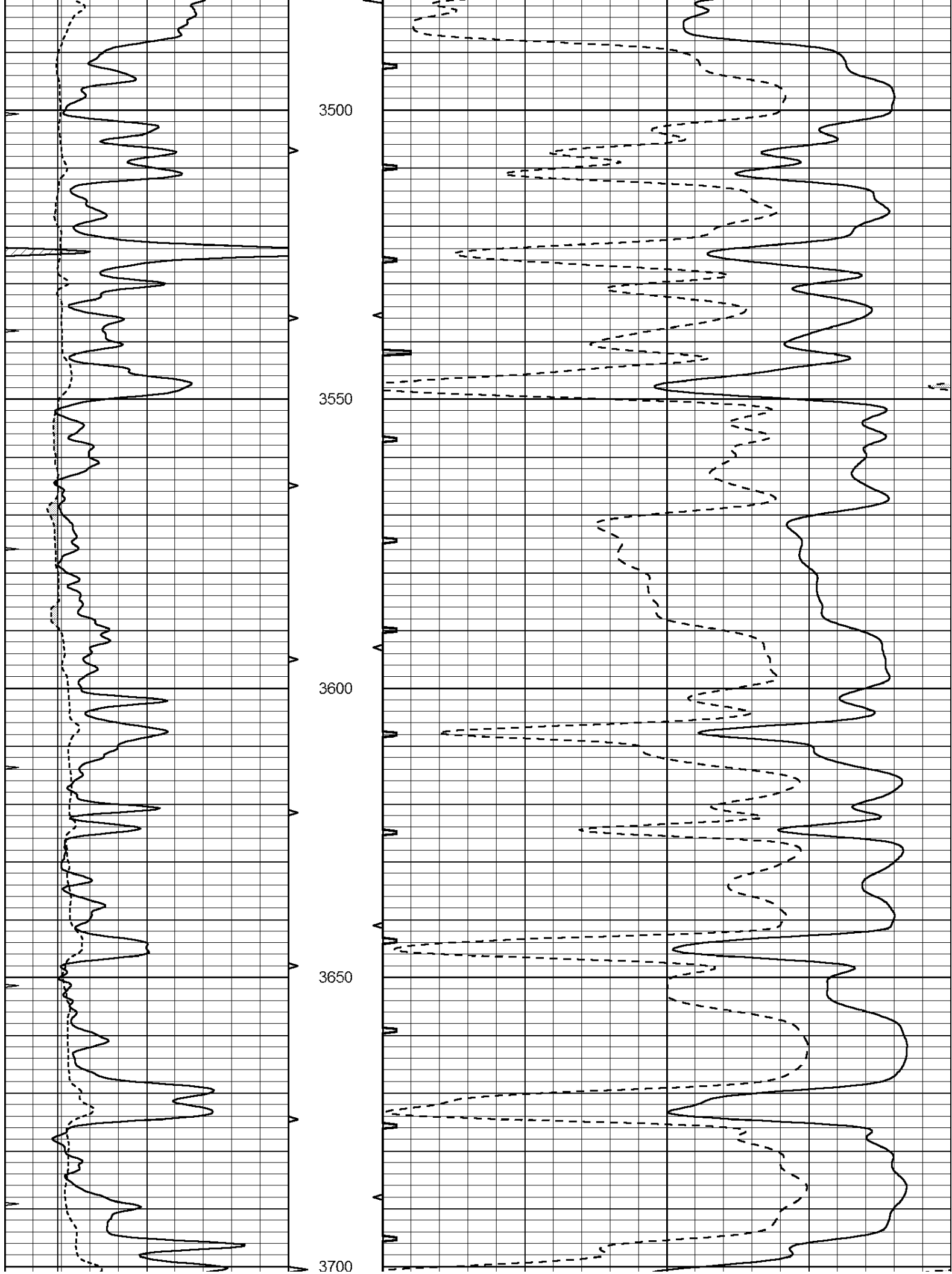
2950

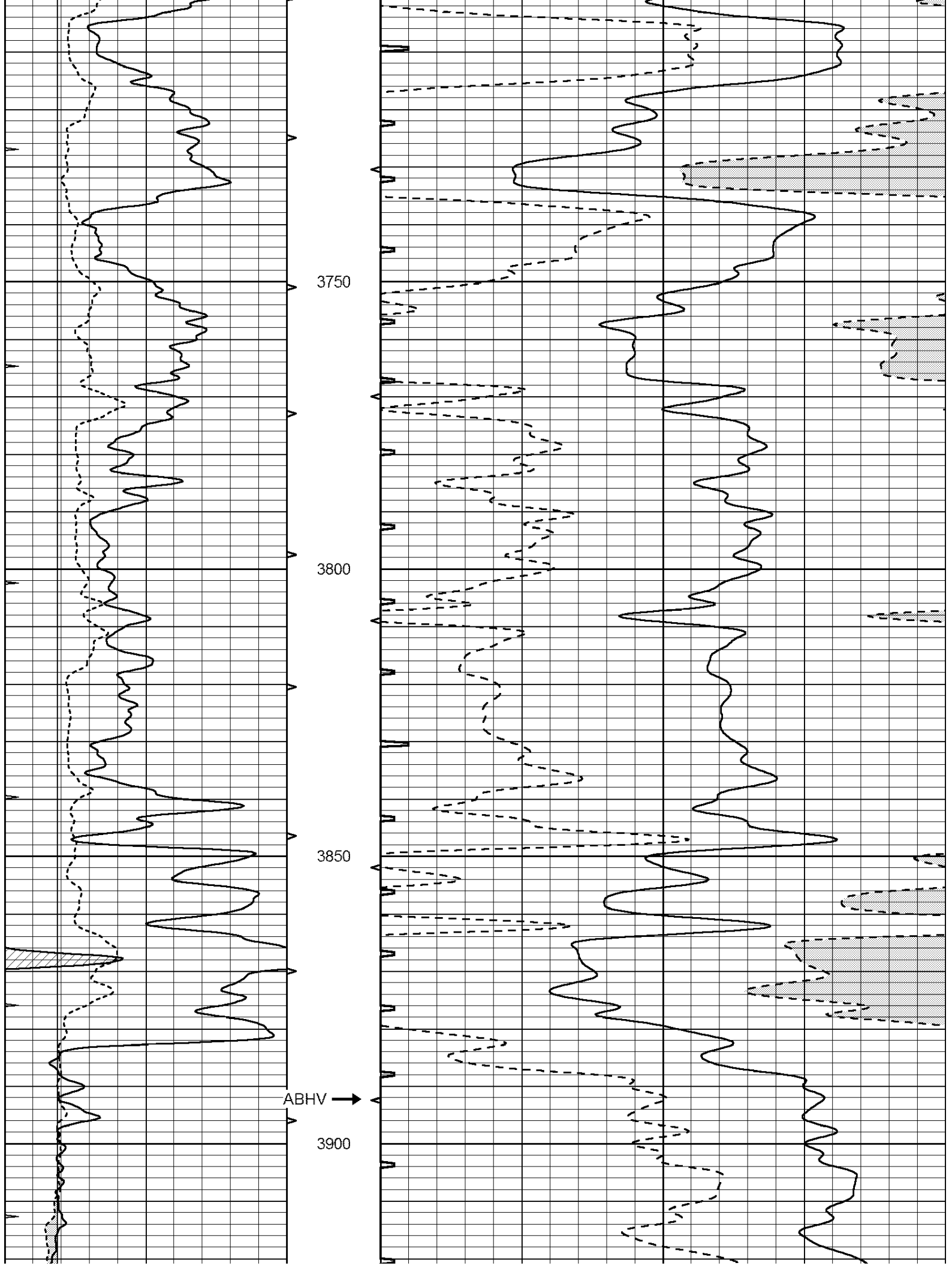
3000

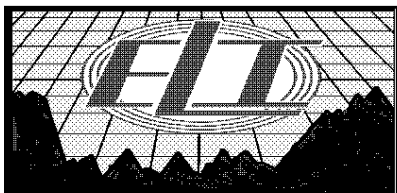
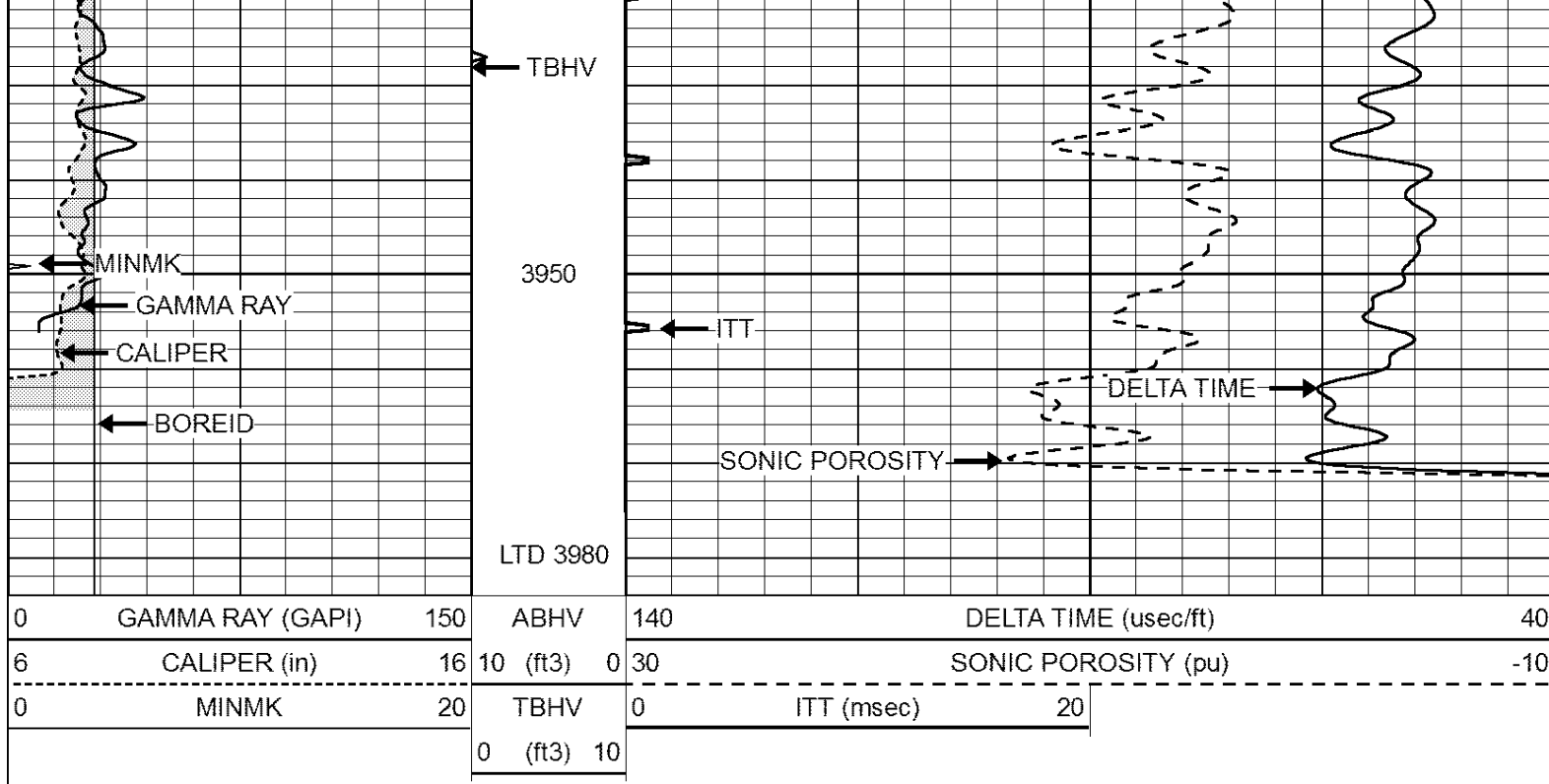








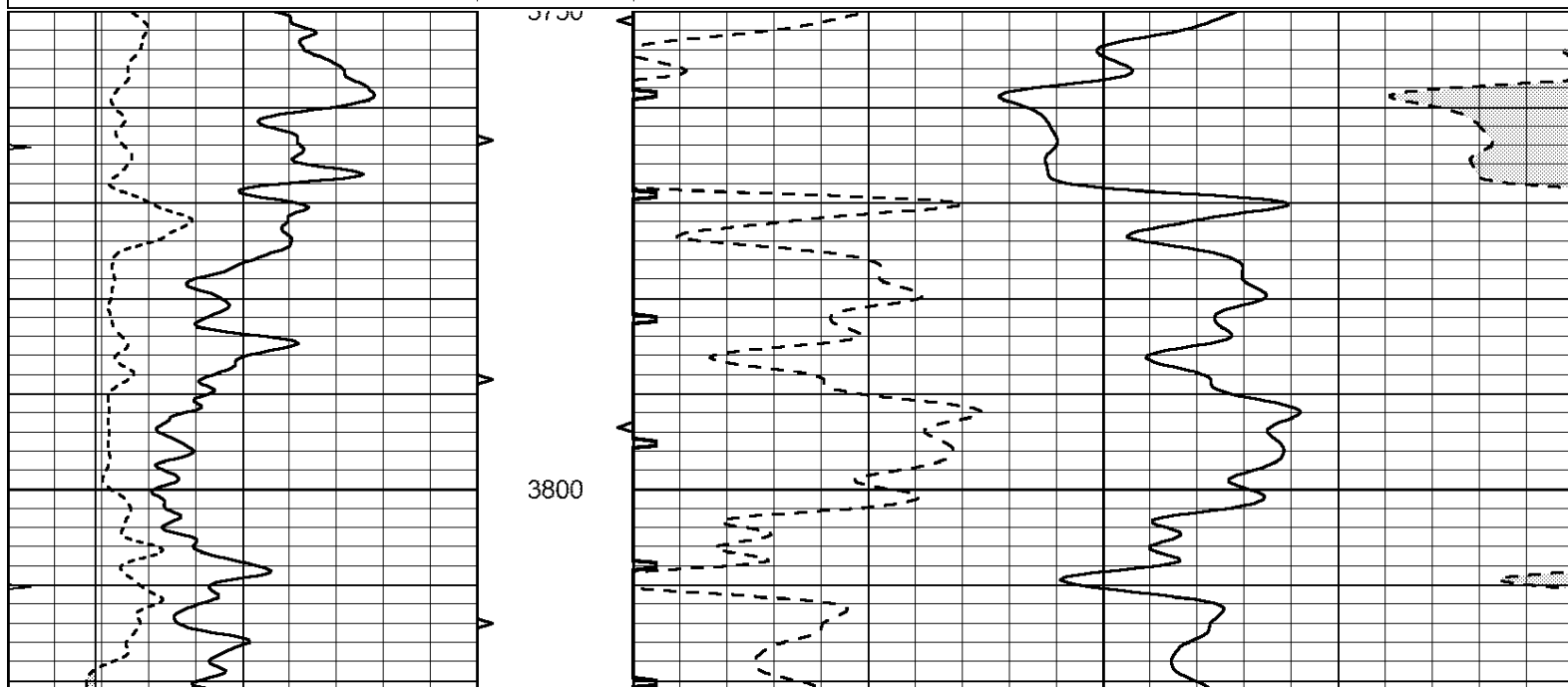


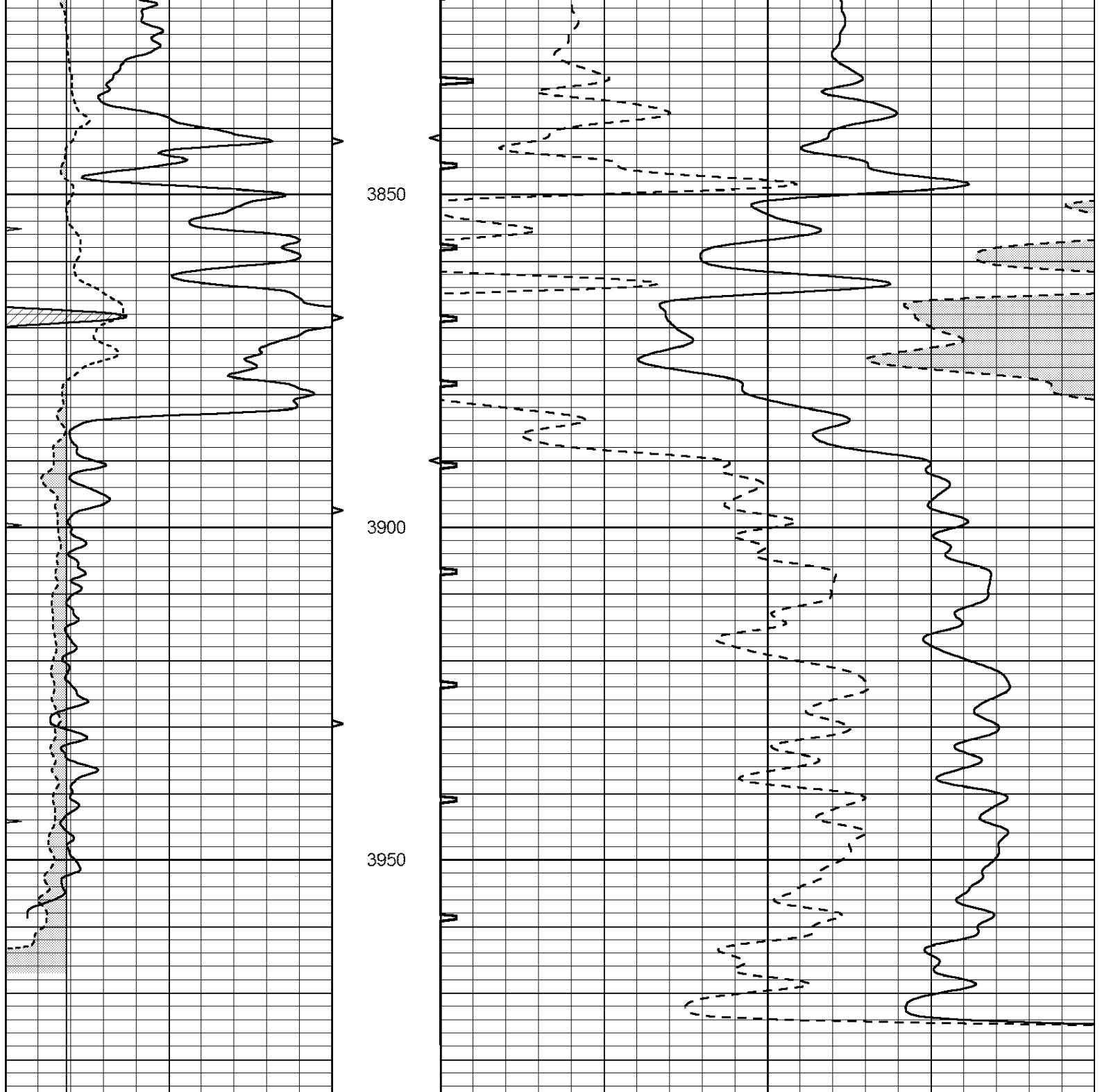


REPEAT SECTION

Database File: 3165ddn.db
 Dataset Pathname: pass4.1
 Presentation Format: _slt
 Dataset Creation: Tue Dec 11 18:50:04 2018 by Calc Open-Cased 090629
 Charted by: Depth in Feet scaled 1:240

0	GAMMA RAY (GAPI)	150	ABHV	140	DELTA TIME (usec/ft)	40
6	CALIPER (in)	16	10 (ft3)	0 30	SONIC POROSITY (pu)	-10
0	MINMK	20	TBHV	0	ITT (msec)	20
			0 (ft3)	10		





0	GAMMA RAY (GAPI)	150	ABHV	140	DELTA TIME (usec/ft)	40
6	CALIPER (in)	16	10 (ft3)	0 30	SONIC POROSITY (pu)	-10
0	MINMK	20	TBHV	0	ITT (msec)	20
			0 (ft3)	10		

Calibration Report

Database File: 3165ddn.db
 Dataset Pathname: pass5.1
 Dataset Creation: Tue Dec 11 19:40:42 2018 by Calc Open-Cased 090629

MICRO Calibration Report

Serial Number: MICRO3
 Tool Model: PROBE

Tool Model:
Performed:

PROBE
Sat Dec 01 06:42:02 2018

Caliper Calibration:

Gain=5.761

Offset=-24.402

References
Readings

Low Cal
7.000
5.339

High Cal
14.000
6.500

1.5" Calibration:

Gain=120.000

Offset=0.400

References
Readings

Low Cal
0.000
0.004

High Cal
20.000
0.228

2" Calibration:

Gain=110.553

Offset=0.120

References
Readings

Low Cal
0.000
0.005

High Cal
20.000
0.175

Gamma Ray Calibration Report

Serial Number:
Tool Model:
Performed:

GR5
OPEN
Sun Sep 30 12:56:34 2018

Calibrator Value:

1.0

GAPI

Background Reading:
Calibrator Reading:

0.0
1.0

cps
cps

Sensitivity:

0.5500

GAPI/cps