



MICRO LOG

Company SHELBY RESOURCES, LLC.
Well BORCK UNIT #1-25
Field N/A
County PAWNEE
State KANSAS

Company SHELBY RESOURCES, LLC.
Well BORCK UNIT #1-25
Field N/A
County PAWNEE State KANSAS

Location: API # : 15-145-21843-00-00
1024 FSL & 2521 FEL
SEC 25 TWP 21S RGE 16W
Permanent Datum GROUND LEVEL Elevation 1970'
Log Measured From KELLY BUSHING 11' A.G.L.
Drilling Measured From KELLY BUSHING
Other Services
CDL/CNL/DIL
SONIC
Elevation
K.B. 1981
D.F. 1979
G.L. 1970

Date	12/11/18
Run Number	TWO
Depth Driller	3980
Depth Logger	3980
Bottom Logged Interval	3960
Top Log Interval	2900
Casing Driller	8 5/8@ 975
Casing Logger	975
Bit Size	7 7/8"
Type Fluid in Hole	CHEMICAL MUD
Density / Viscosity	9.4/64
pH / Fluid Loss	10.0/10.8
Source of Sample	FLOWLINE
Rm @ Meas. Temp	1.1@62
Rmt @ Meas. Temp	.83@62
Rmc @ Meas. Temp	1.32@62
Source of Rmf / Rmc	MEASURED
Rm @ BHT	.59@116
Time Circulation Stopped	2 HOURS
Time Logger on Bottom	///
Maximum Recorded Temperature	116F
Equipment Number	4010
Location	HAYS, KANSAS
Recorded By	GUS PFANENSTIEL
Witnessed By	JEREMY SCHWARTZ

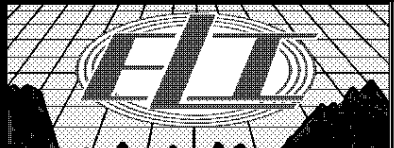
<<< Fold Here >>>

All interpretations are opinions based on inferences from electrical or other measurements and we cannot and do not guarantee the accuracy or correctness of any interpretation, and we shall not, except in the case of gross or willful negligence on our part, be liable or responsible for any loss, costs, damages, or expenses incurred or sustained by anyone resulting from any interpretation made by any of our officers, agents or employees. These interpretations are also subject to our general terms and conditions set out in our current Price Schedule.

Comments

THANK YOU FOR USING ELI WIRELINE, HAYS, KS. (785) 628-6395

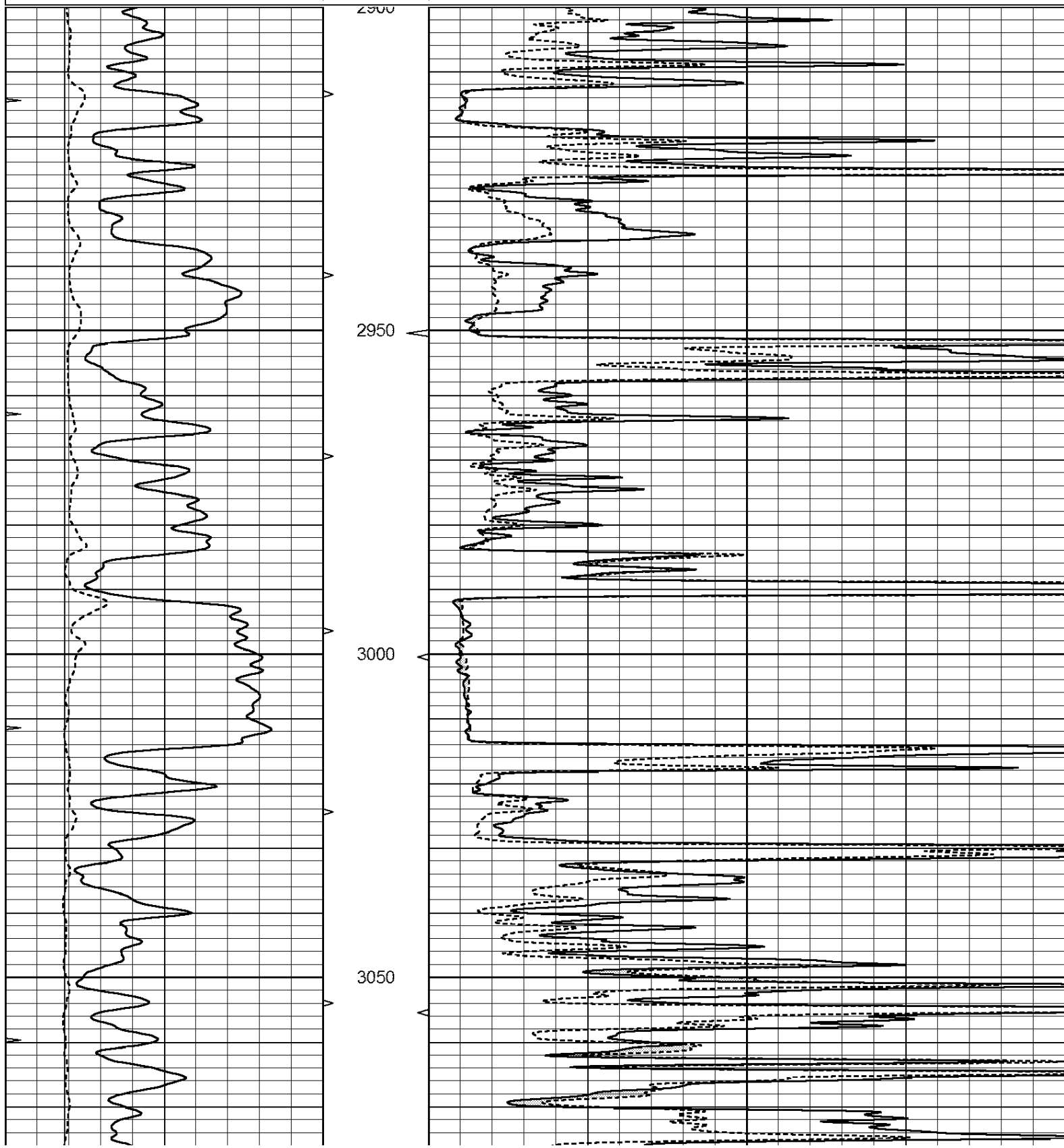
DIRECTIONS
LARNED, HEAD NE ON HIGHWAY TILL YOU GET TO O RD.
GO SE TO 80 TH, GO SOUTH TO DEAD IN EAST INTO.

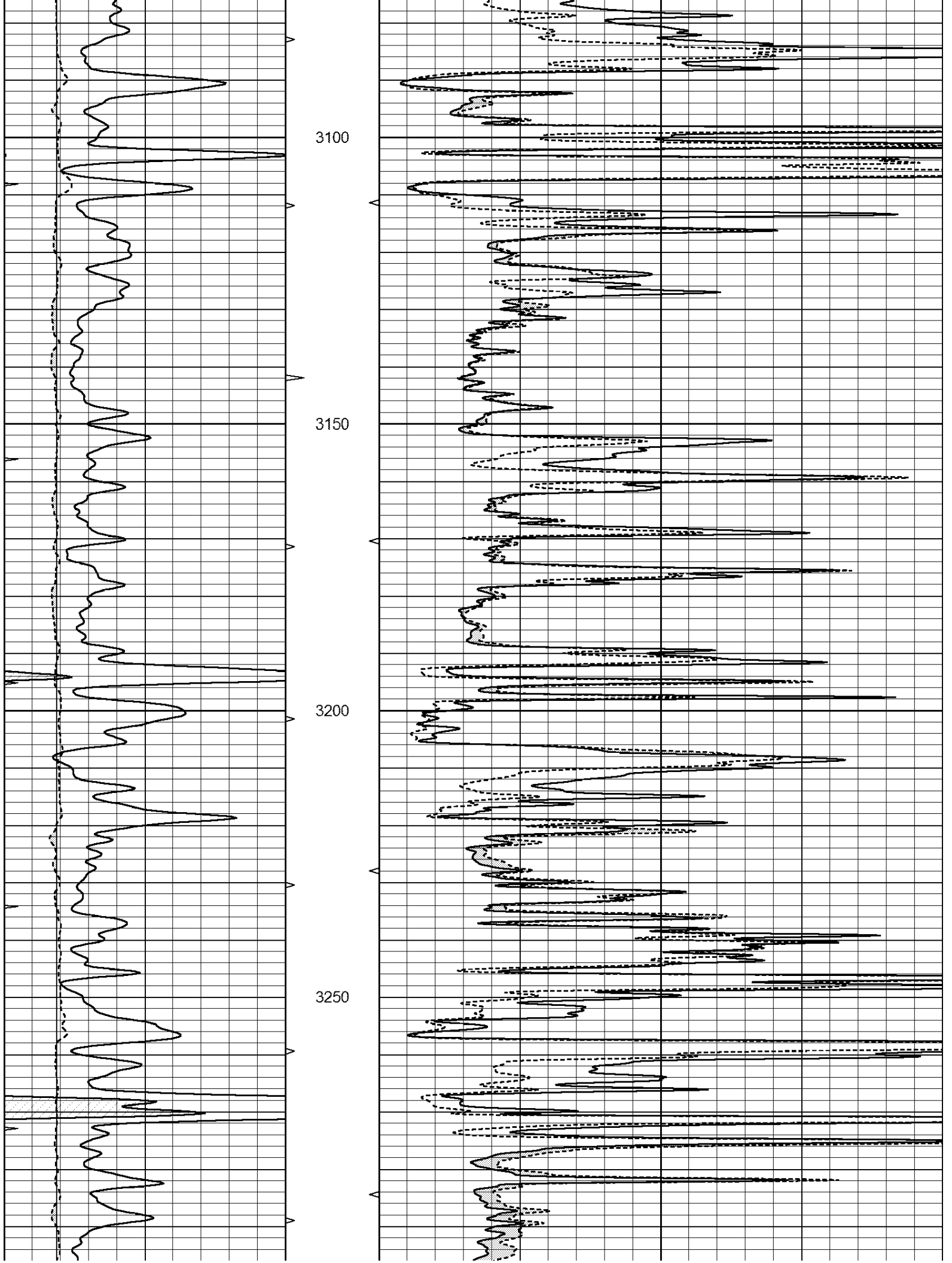


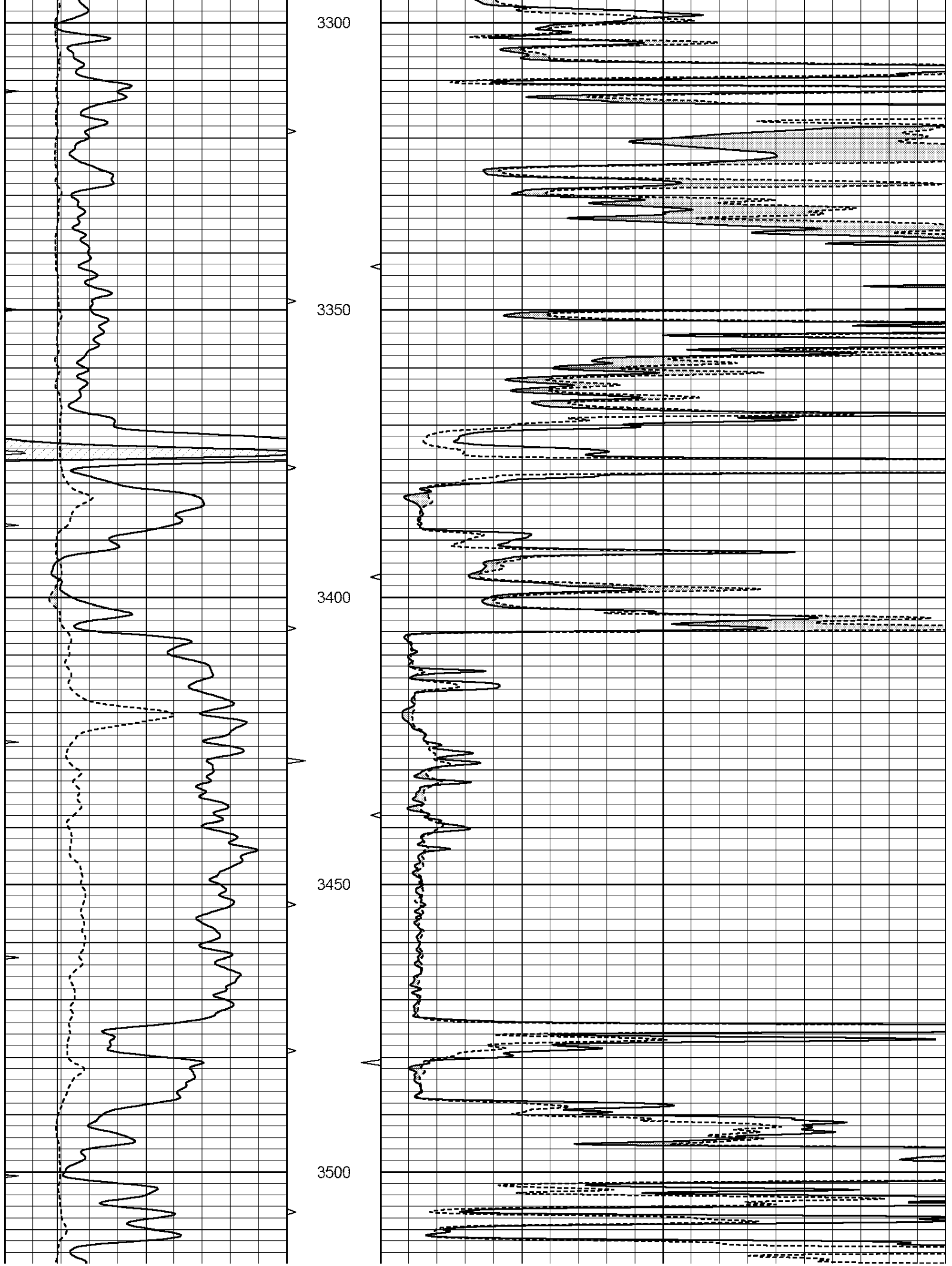
MAIN PASS

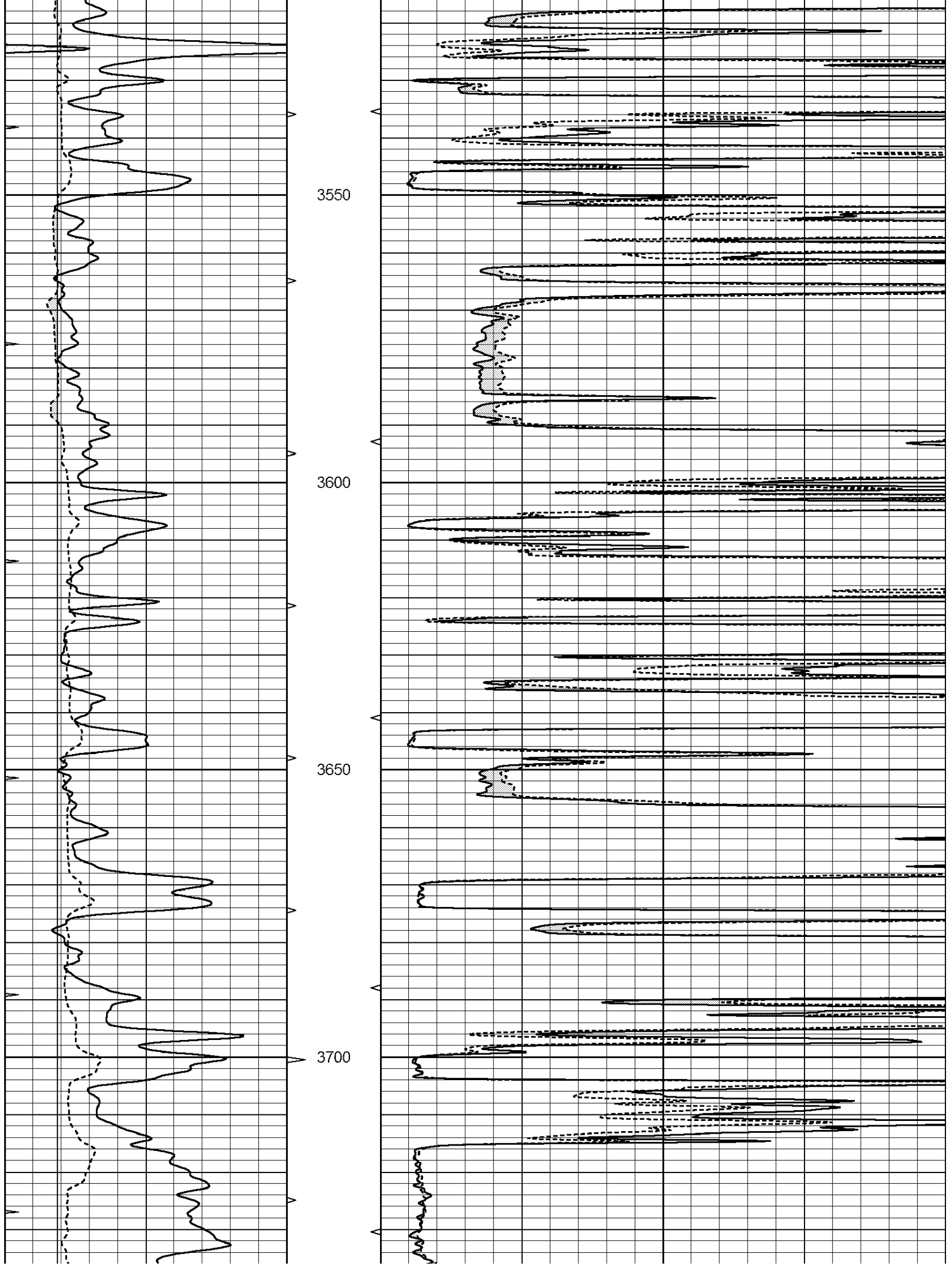
Database File: 3165ddn.db
 Dataset Pathname: pass5MIC
 Presentation Format: _micro
 Dataset Creation: Tue Dec 11 19:09:13 2018 by Calc Open-Cased 090629
 Charted by: Depth in Feet scaled 1:240

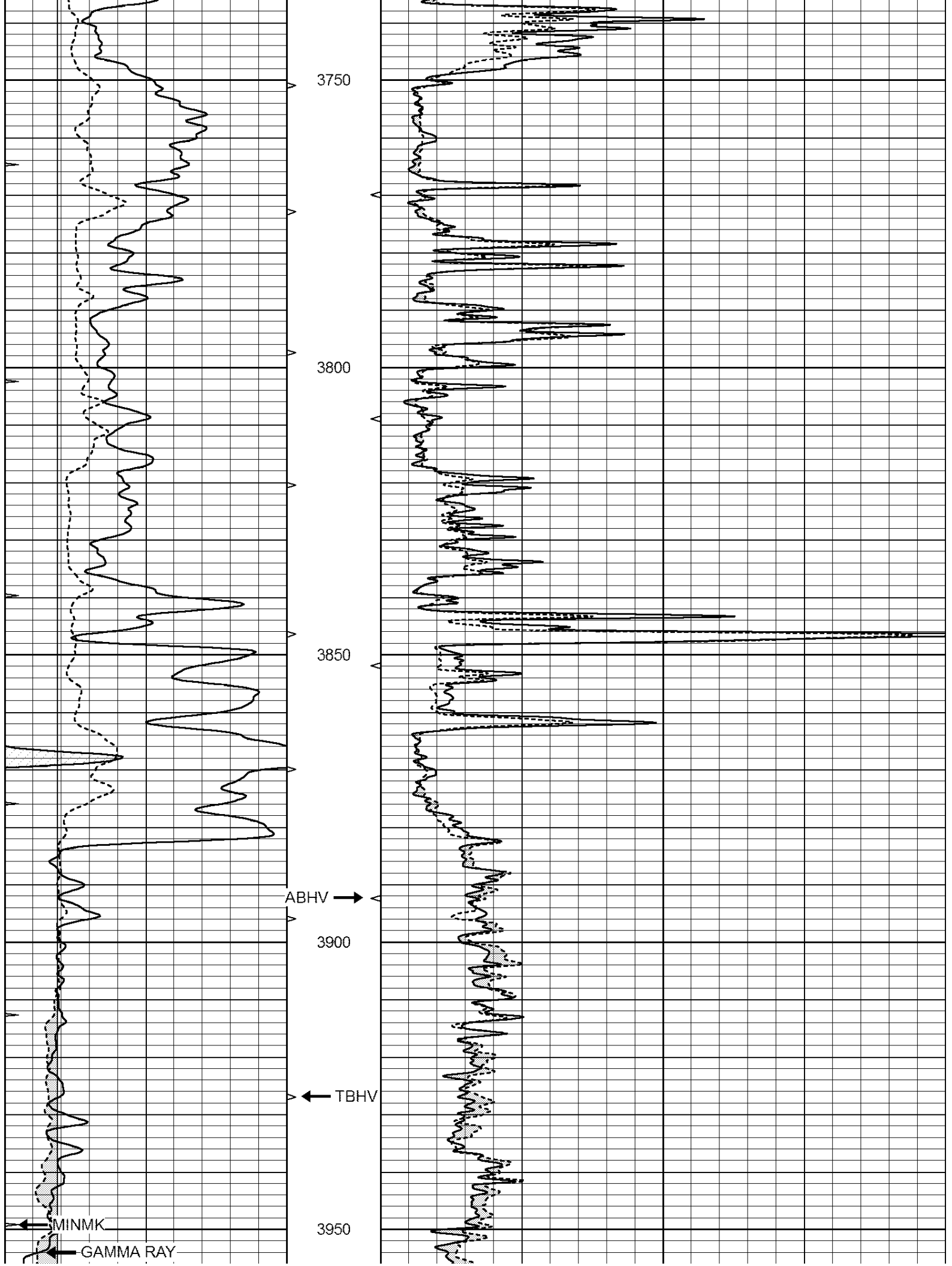
0	GAMMA RAY (GAPI)	150	ABHV	0	MEL1.5 (Ohm-m)	40
6	CALIPER (in)	16	10 (ft3)	0	MEL2.0 (Ohm-m)	40
0	MINMK	20	TBHV			
			0 (ft3)	10		

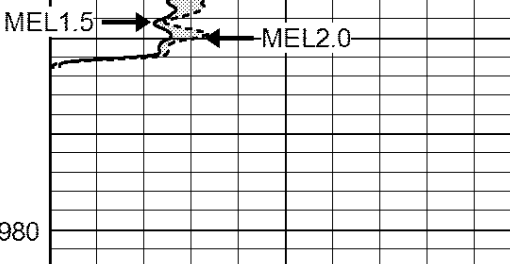
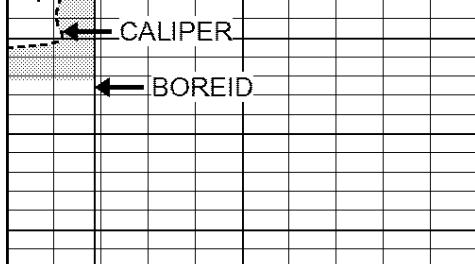






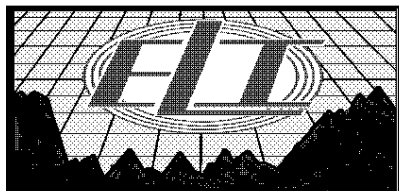






LTD 3980

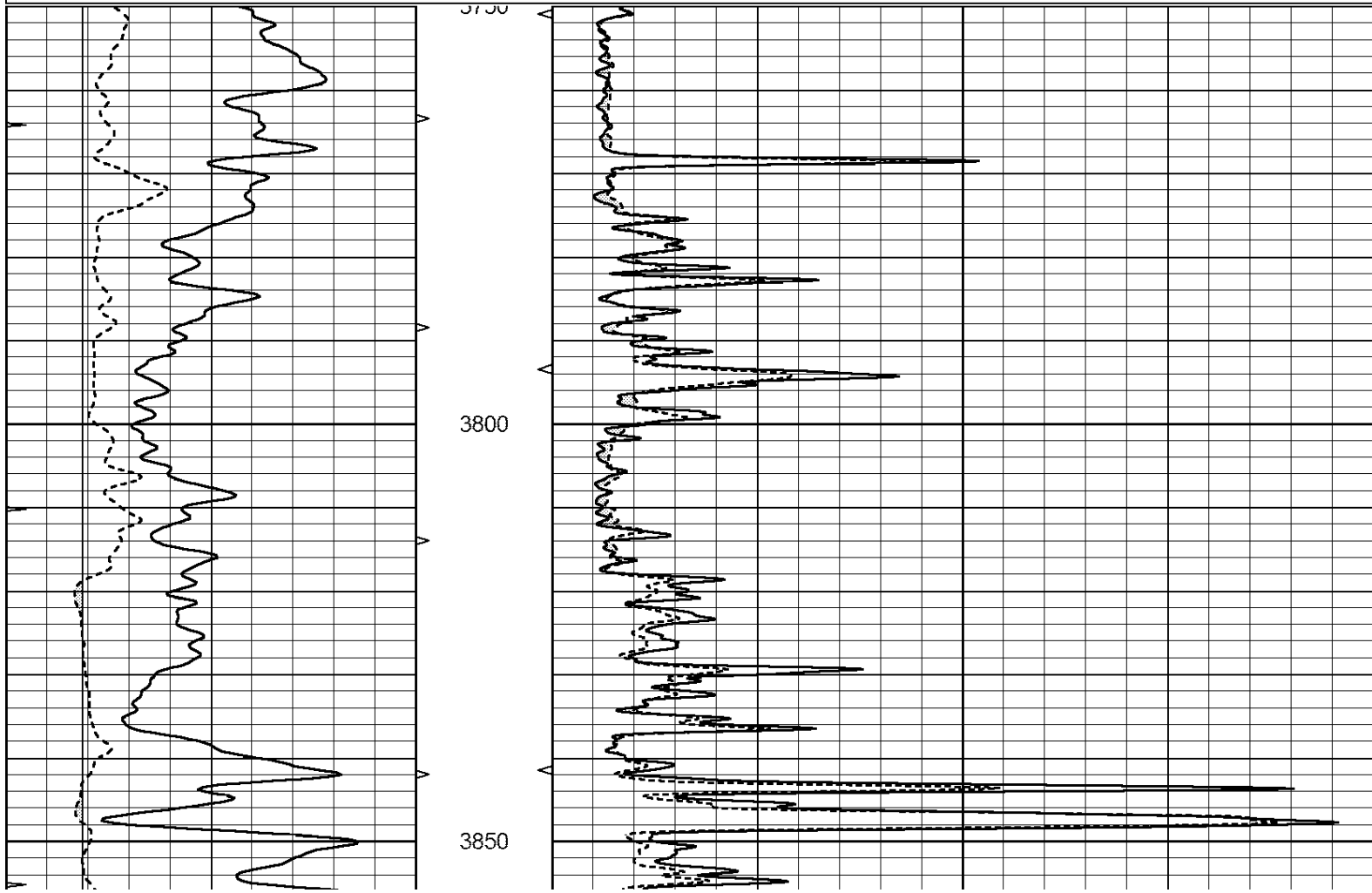
0	GAMMA RAY (GAPI)	150	ABHV	0	MEL1.5 (Ohm-m)	40
6	CALIPER (in)	16	10 (ft3)	0	MEL2.0 (Ohm-m)	40
0	MINMK	20	TBHV			
			0 (ft3)	10		

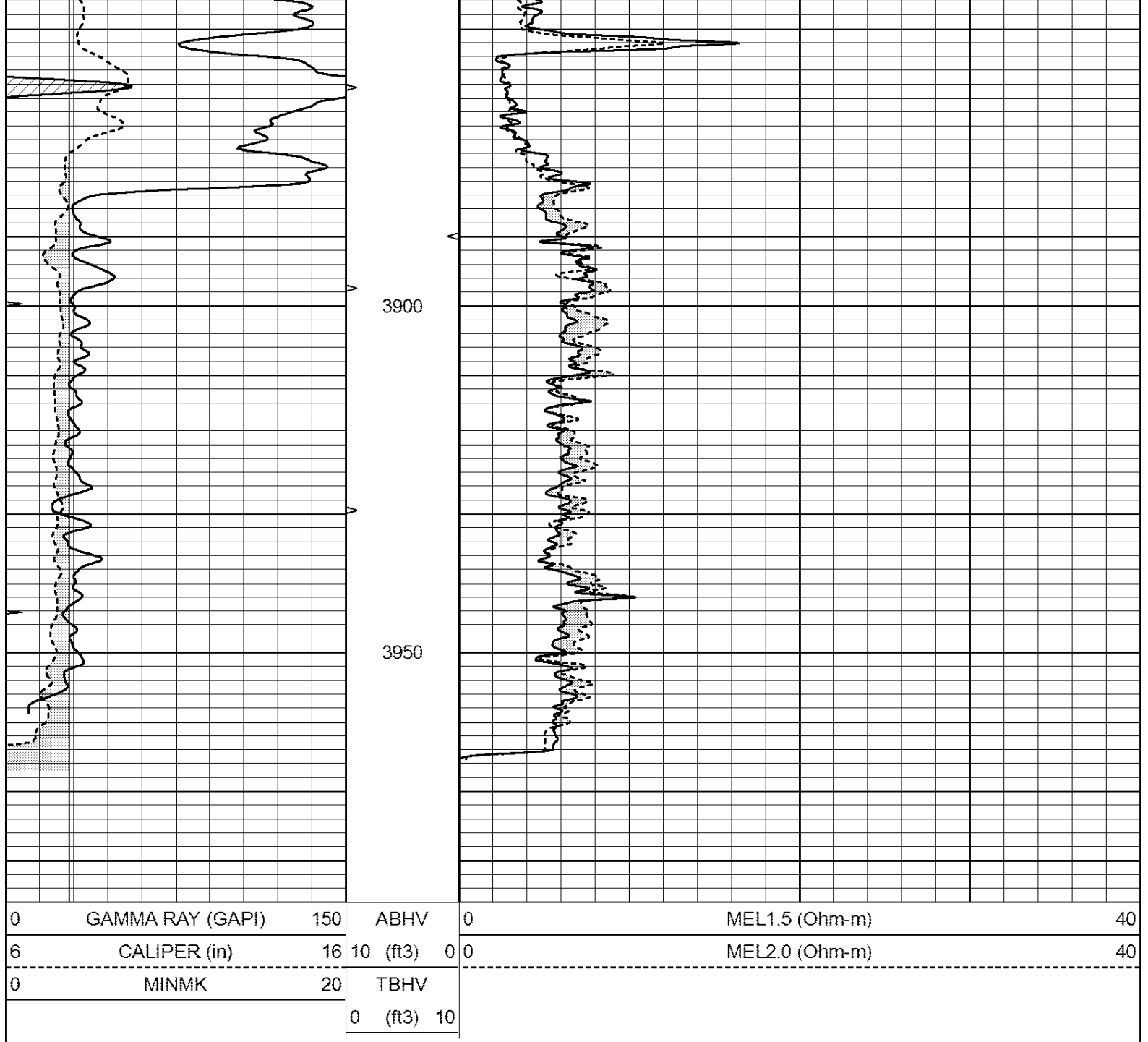


REPEAT SECTION

Database File: 3165ddn.db
 Dataset Pathname: pass4.1
 Presentation Format: _micro
 Dataset Creation: Tue Dec 11 18:50:04 2018 by Calc Open-Cased 090629
 Charted by: Depth in Feet scaled 1:240

0	GAMMA RAY (GAPI)	150	ABHV	0	MEL1.5 (Ohm-m)	40
6	CALIPER (in)	16	10 (ft3)	0	MEL2.0 (Ohm-m)	40
0	MINMK	20	TBHV			
			0 (ft3)	10		





Calibration Report

Database File: 3165ddn.db
 Dataset Pathname: pass5MIC
 Dataset Creation: Tue Dec 11 19:09:13 2018 by Calc Open-Cased 090629

MICRO Calibration Report

Serial Number: MICRO3
 Tool Model: PROBE
 Performed: Sat Dec 01 06:42:02 2018

Caliper Calibration: Gain=5.761 Offset=-24.402

References	Low Cal	High Cal
Readings	7.000	14.000
	5.339	6.500

1.5" Calibration: Gain=120.000 Offset=0.400

Low Cal	High Cal
---------	----------

References	0.000	20.000
Readings	0.004	0.228

2" Calibration:	Gain=110.553	Offset=0.120
References	Low Cal 0.000	High Cal 20.000
Readings	0.005	0.175

Gamma Ray Calibration Report

Serial Number:	GR5	
Tool Model:	OPEN	
Performed:	Sun Sep 30 12:56:34 2018	
Calibrator Value:	1.0	GAPI
Background Reading:	0.0	cps
Calibrator Reading:	1.0	cps
Sensitivity:	0.5500	GAPI/cps