



SONIC LOG

Company LAWCO HOLDINGS, LLC.
Well RADCLIFF # 4-4
Field COUNTRYMAN
County COWLEY
State KANSAS

Location: API #: 15-035-24700-0000
 NW SW SW SW
 493' FSL & 258' FEL
 SEC 4 TWP 33S RGE 7E
Permanent Datum GL Elevation 1337'
Log Measured From GL
Drilling Measured From GL

Other Services
 LDT/SWN,
 DIL, MEL
 Elevation
 K.B. ---
 D.F. ---
 G.L. 1337'

Date	11-12-2018
Run Number	ONE
Depth Driller	3304'
Depth Logger	3304'
Bottom Logged Interval	3302'
Top Log Interval	SURFACE
Casing Driller	8 5/8" @ 317'
Casing Logger	8 5/8" @ 317'
Bit Size	7 7/8"
Type Fluid in Hole	CHEMICAL
Density / Viscosity	8.7 / 54
pH / Fluid Loss	9.5 / 8.6
Source of Sample	FLOWLINE
Rm @ Meas. Temp	2.20 @ 60
Rmt @ Meas. Temp	2.62 @ 60
Rmc @ Meas. Temp	1.78 @ 60
Source of Rmf / Rmc	CAL
Rm @ BHT	1.49 @ 107
Time Circulation Stopped	12:00 AM
Time Logger on Bottom	2:30 AM
Maximum Recorded Temperature	107
Equipment Number	OW2
Location	HOMINY, OK
Recorded By	W. LOWERY
Witnessed By	MR. MACKAY

<<< Fold Here >>>

All interpretations are opinions based on inferences from electrical or other measurements and we cannot and do not guarantee the accuracy or correctness of any interpretation, and we shall not, except in the case of gross or willful negligence on our part, be liable or responsible for any loss, costs, damages, or expenses incurred or sustained by anyone resulting from any interpretation made by any of our officers, agents or employees. These interpretations are also subject to our general terms and conditions set out in our current Price Schedule.

Comments

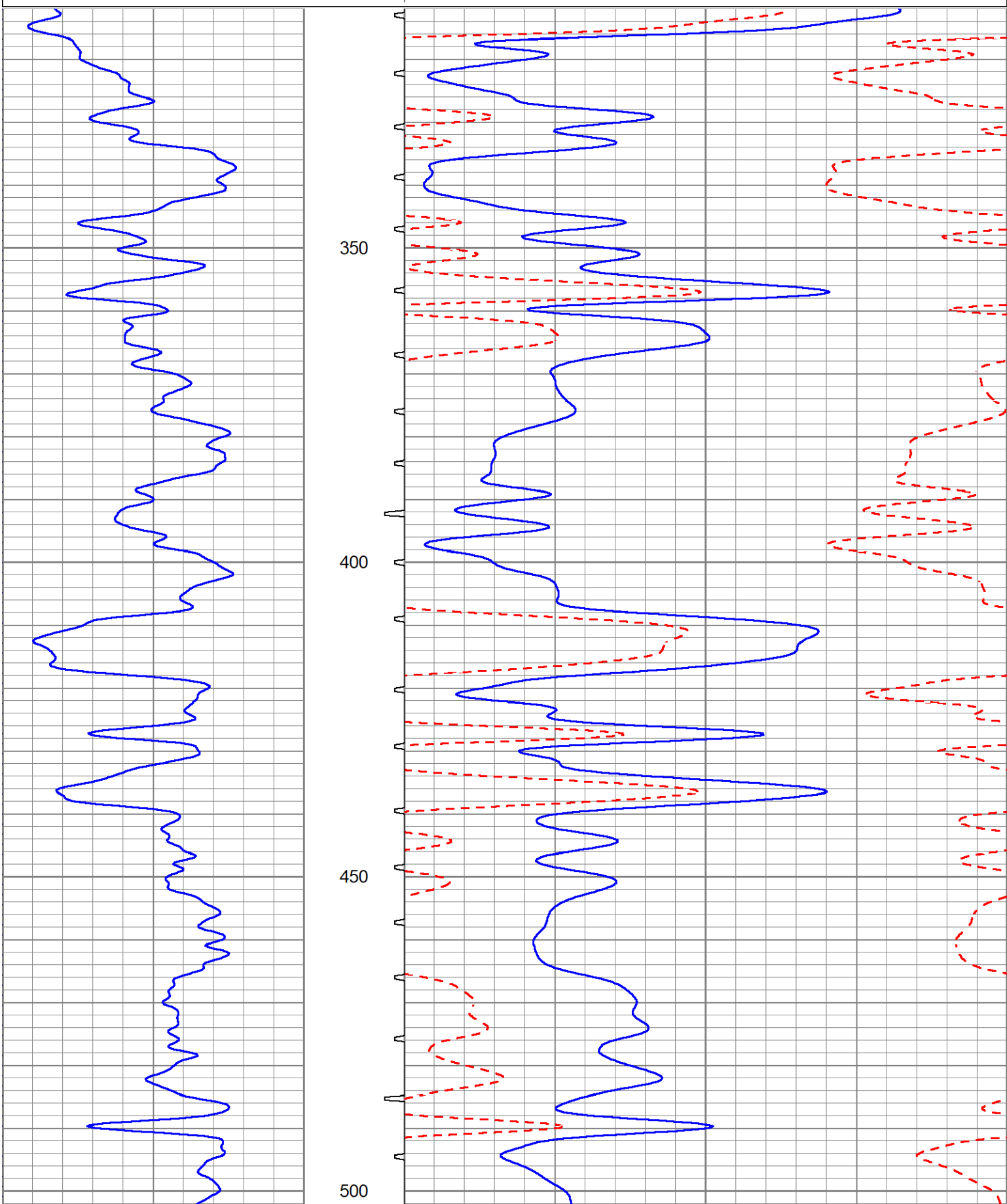
OW2-9163
 CREW : C. SHAMBLES, T. LUNN

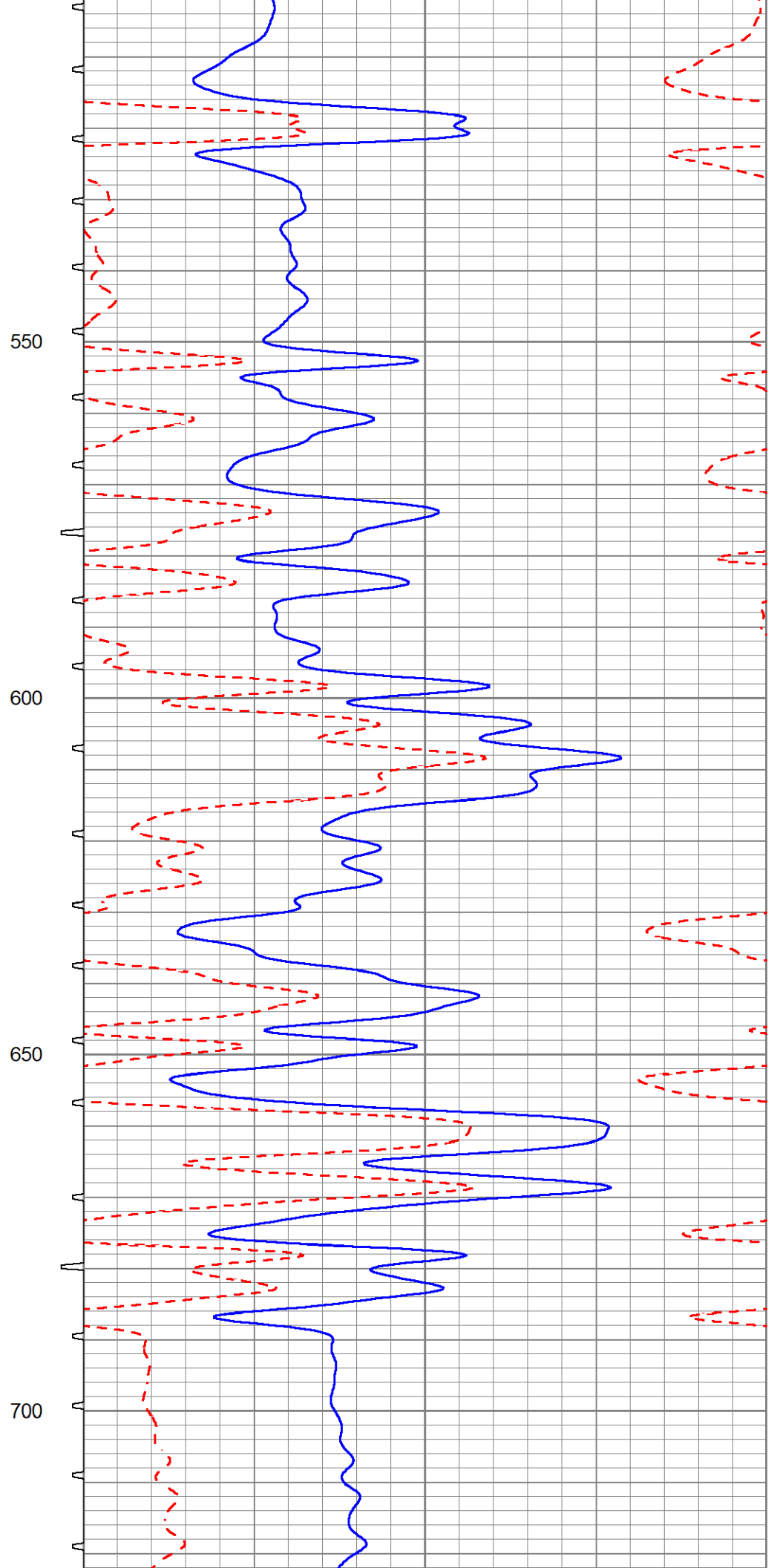
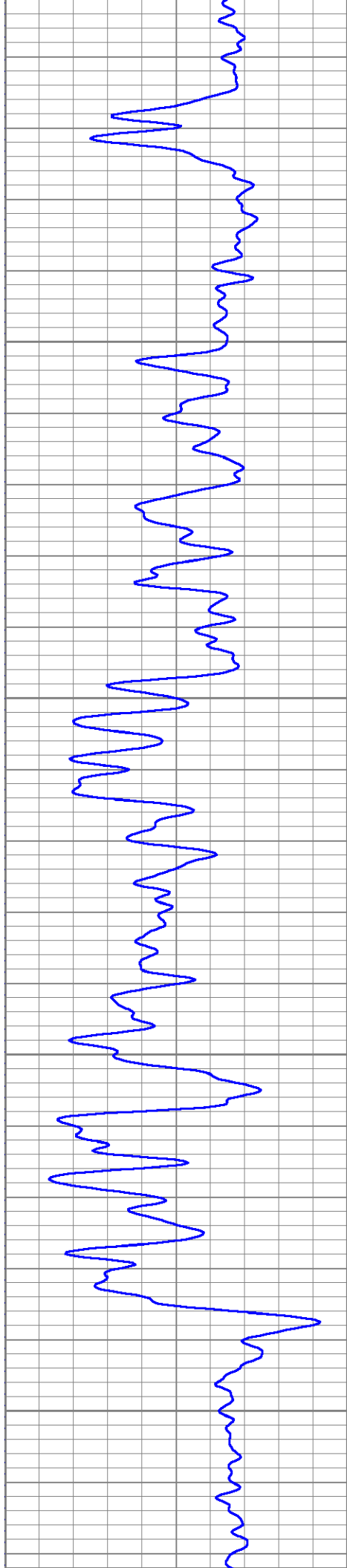


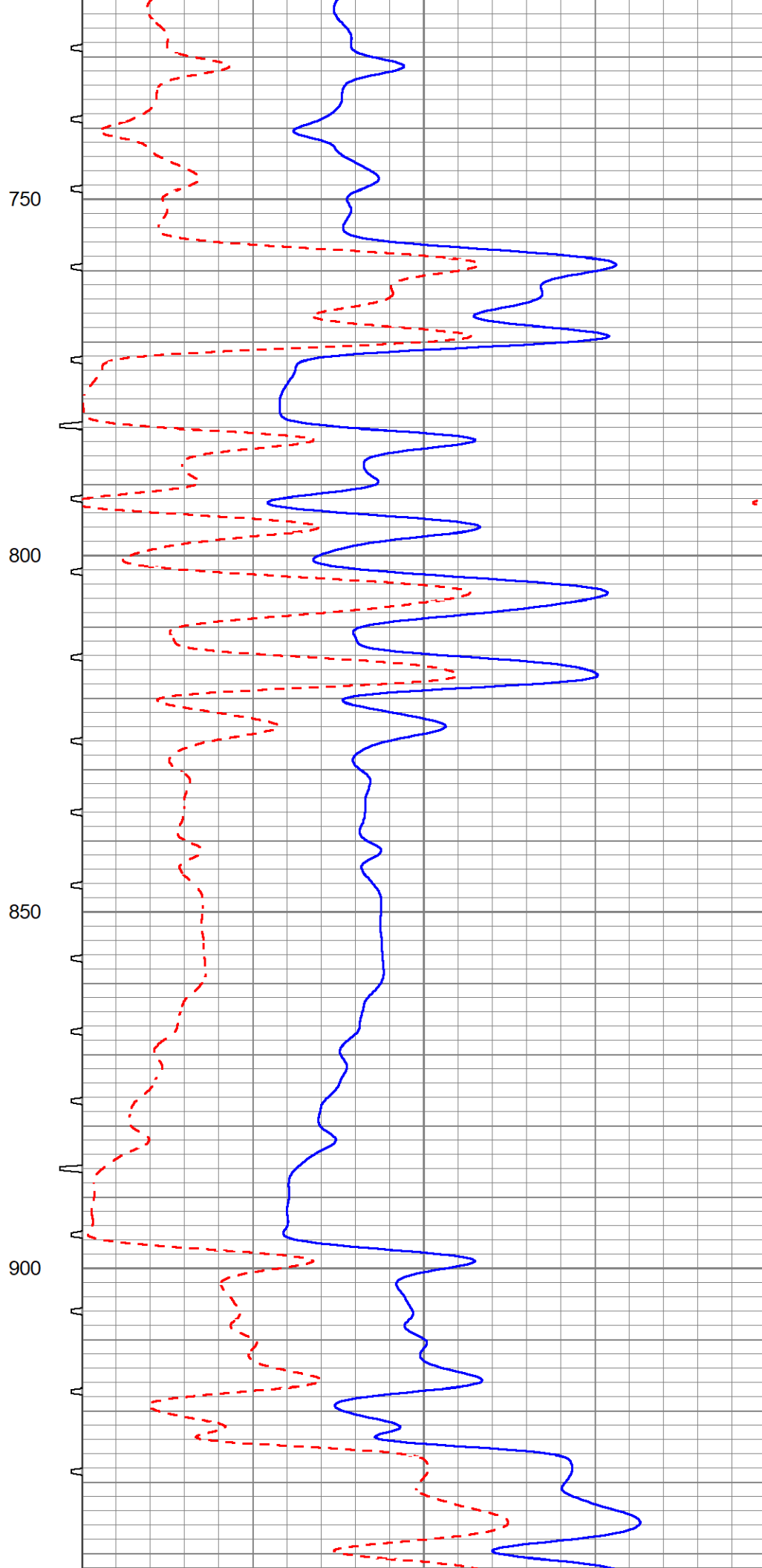
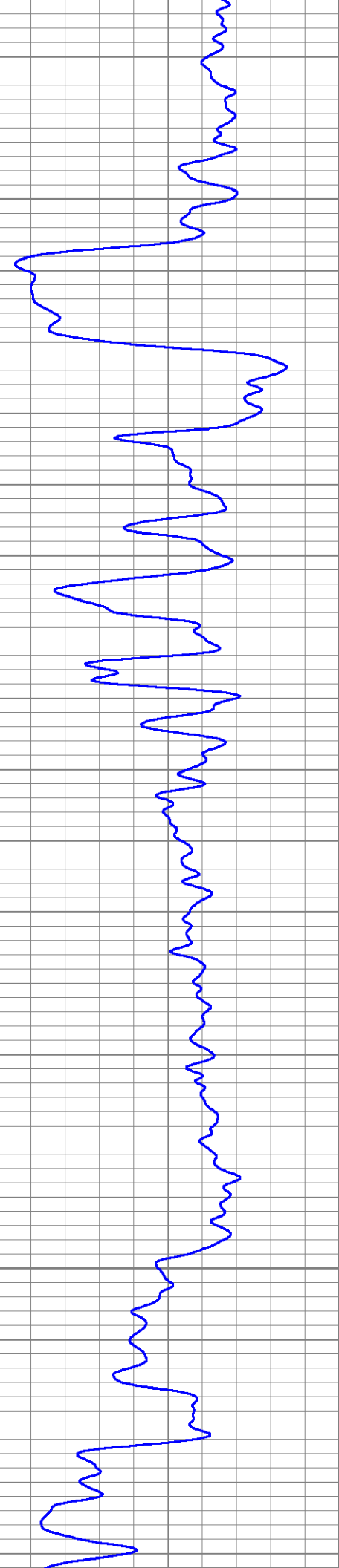
5" SONIC SECTION

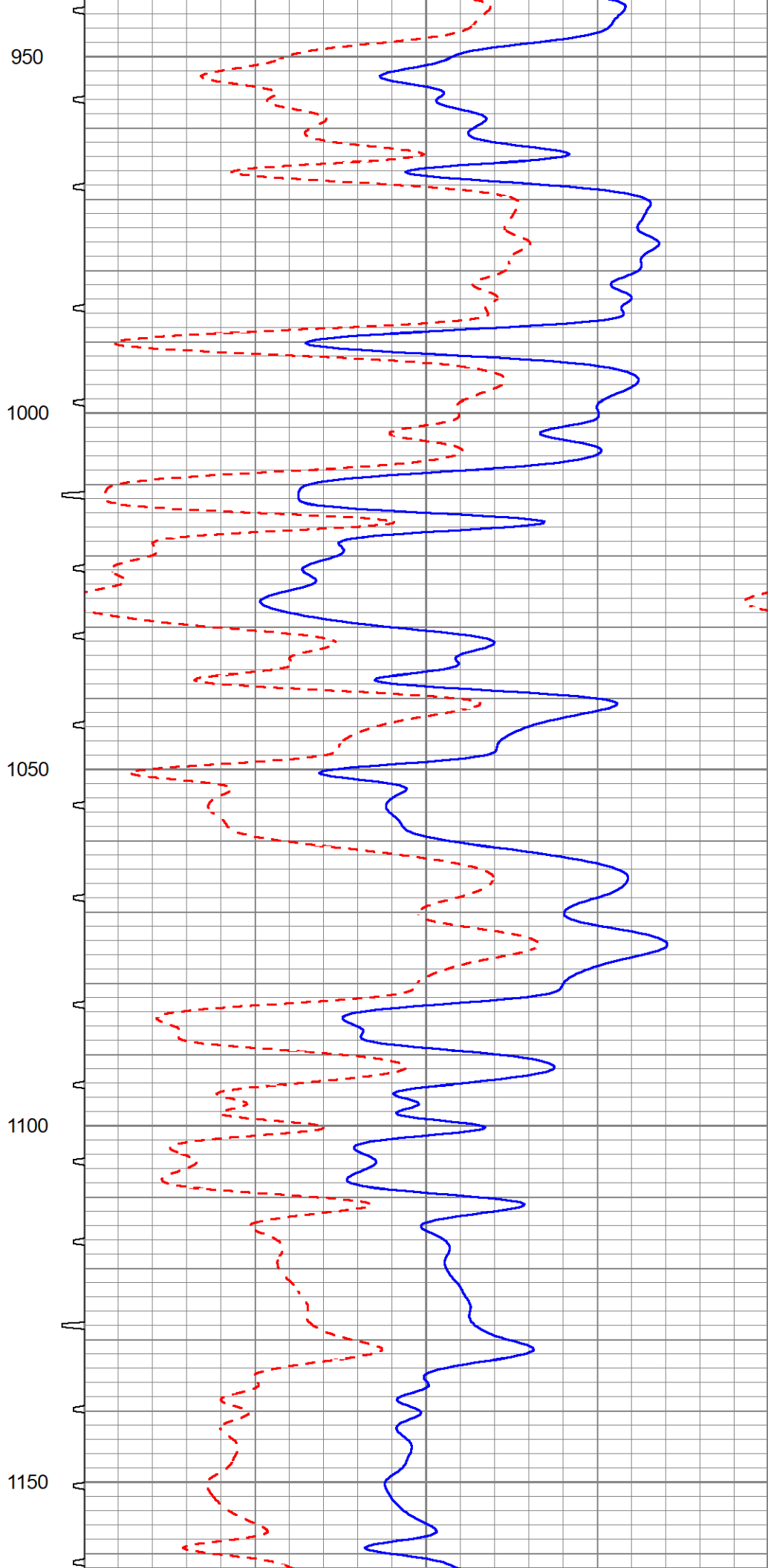
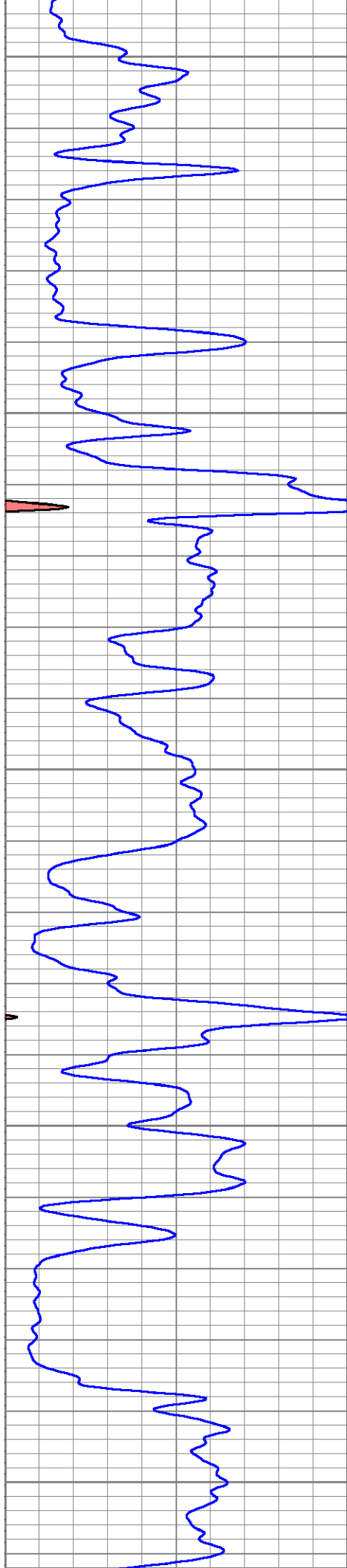
Database File ow2-9163 lawco energy.db
 Dataset Pathname BHC/pass1
 Presentation Format sonic
 Dataset Creation Mon Nov 12 05:44:45 2018
 Charted by Depth in Feet scaled 1:240

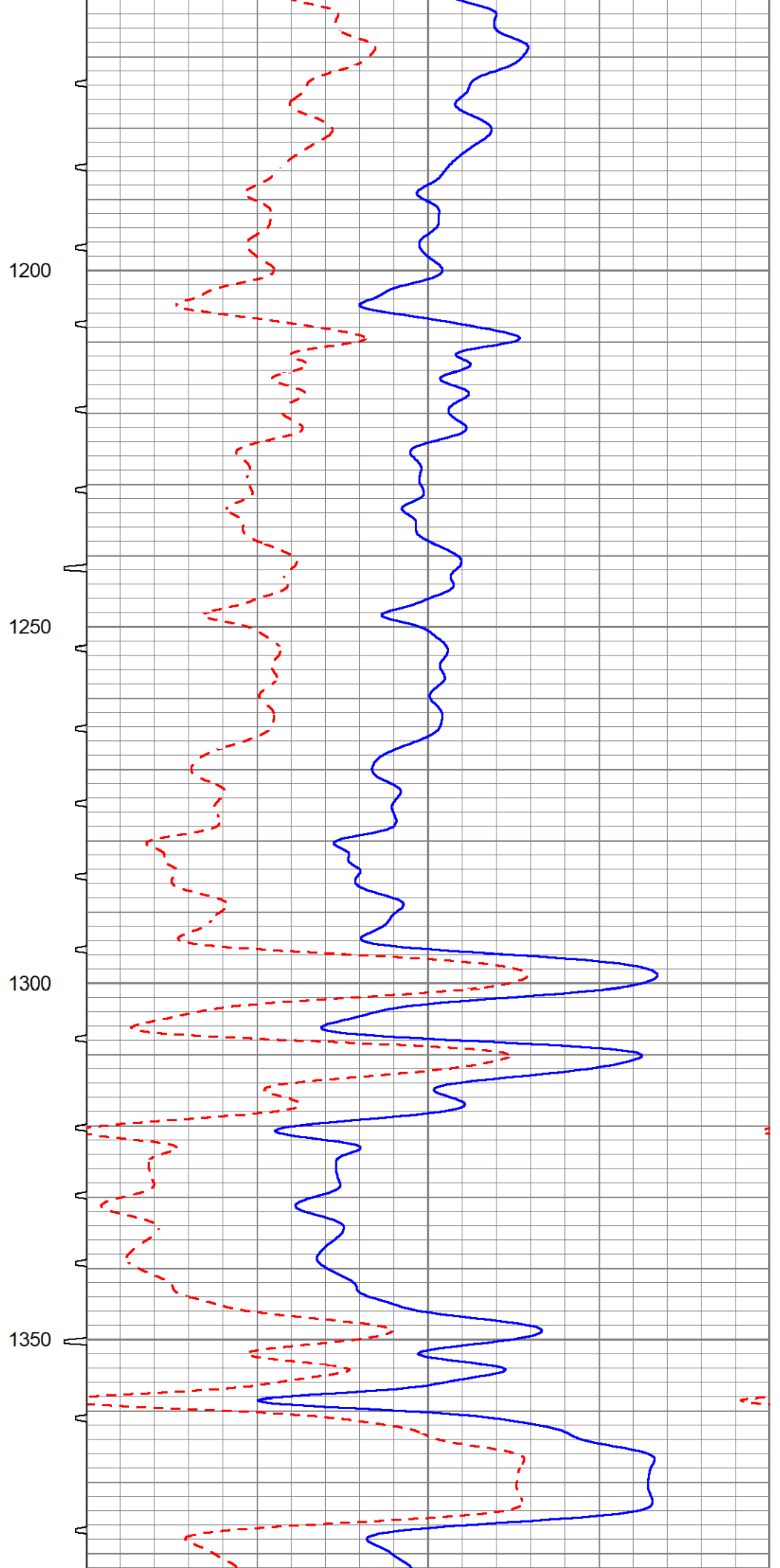
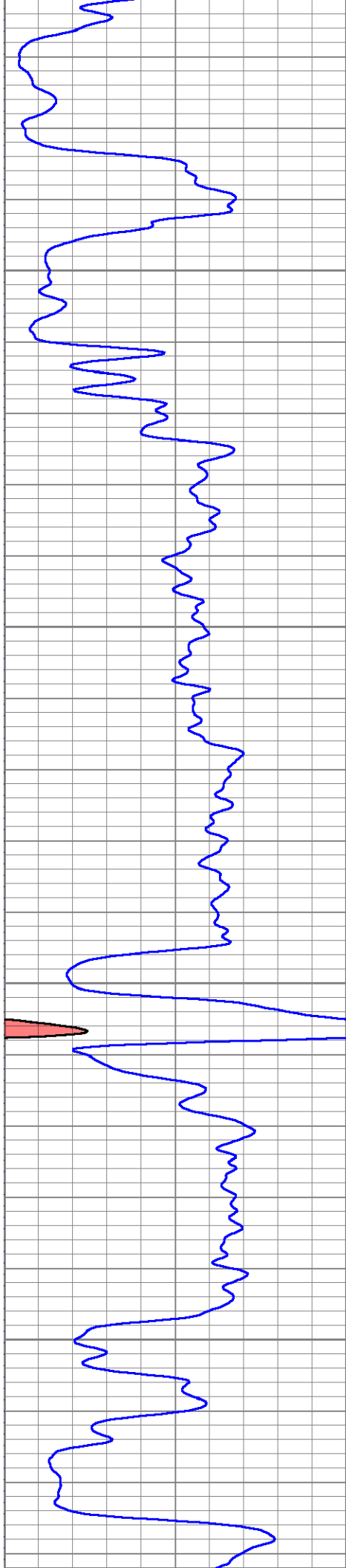
0	Gamma Ray (GAPI)	150	ITT	45	Sonic Porosity (pu)	-15
				140	Delta Time (usec/ft)	40

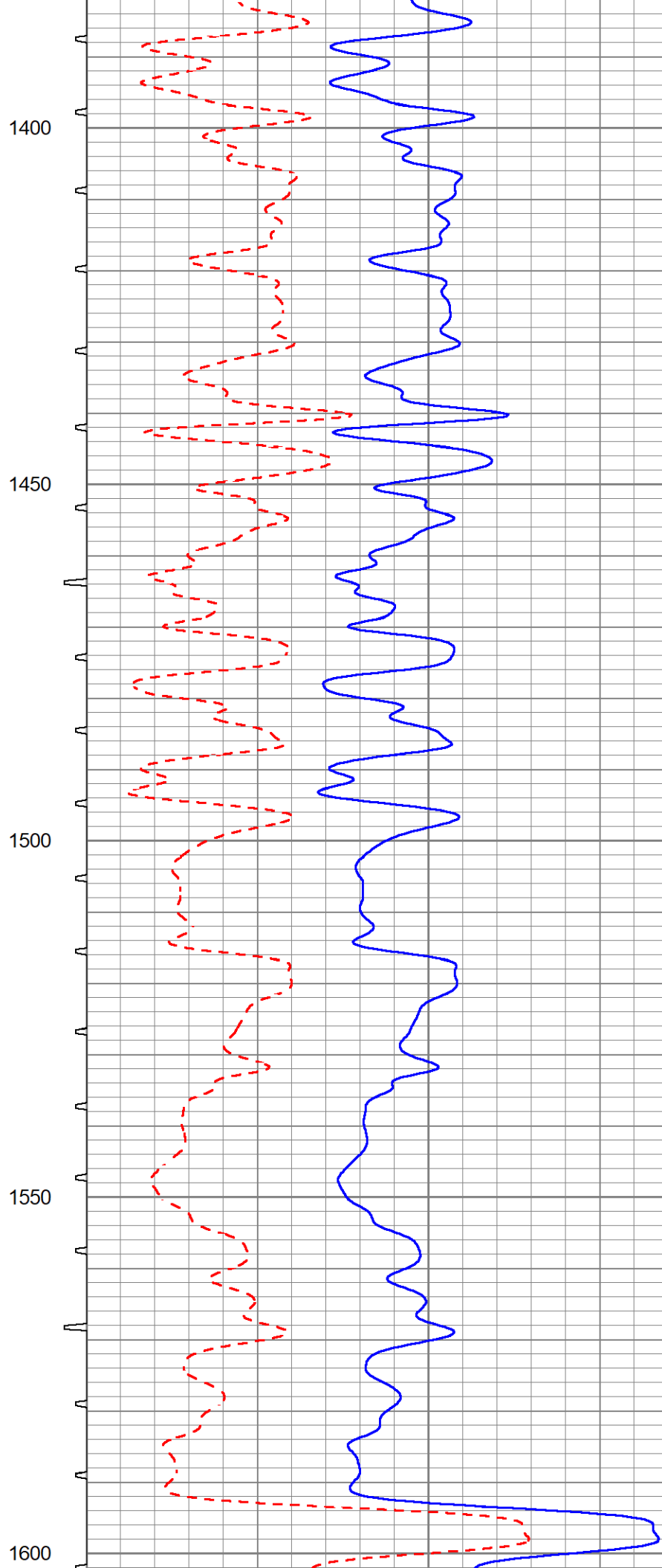
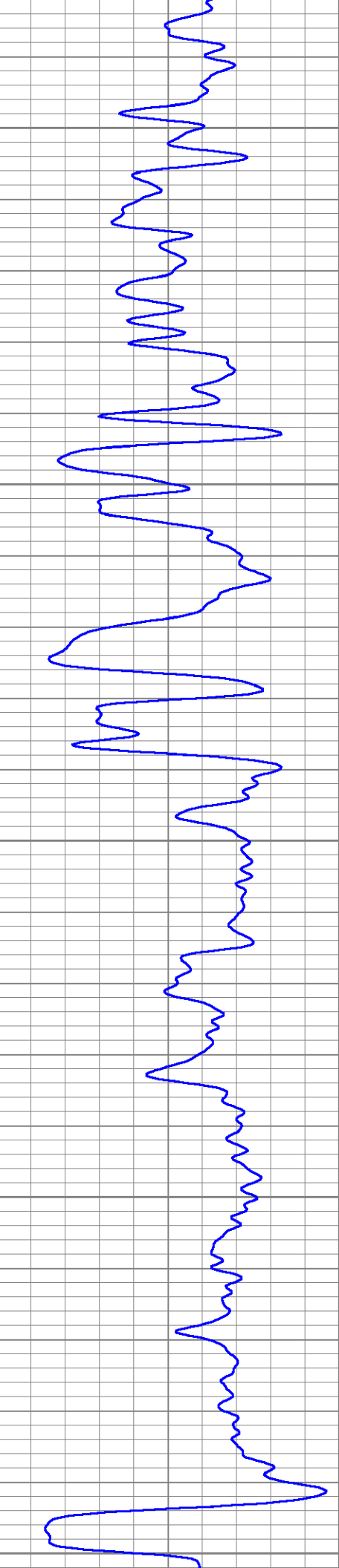


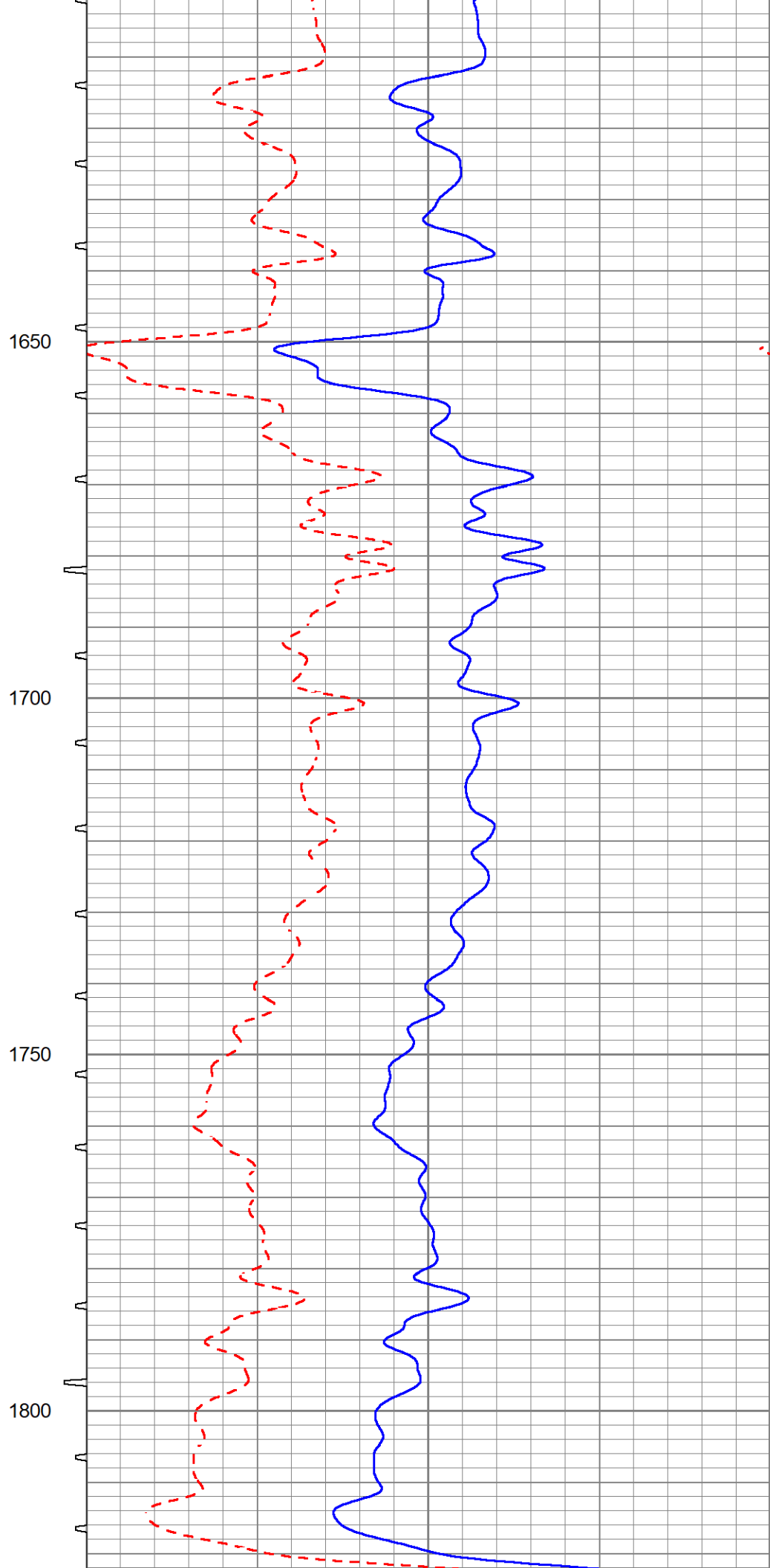
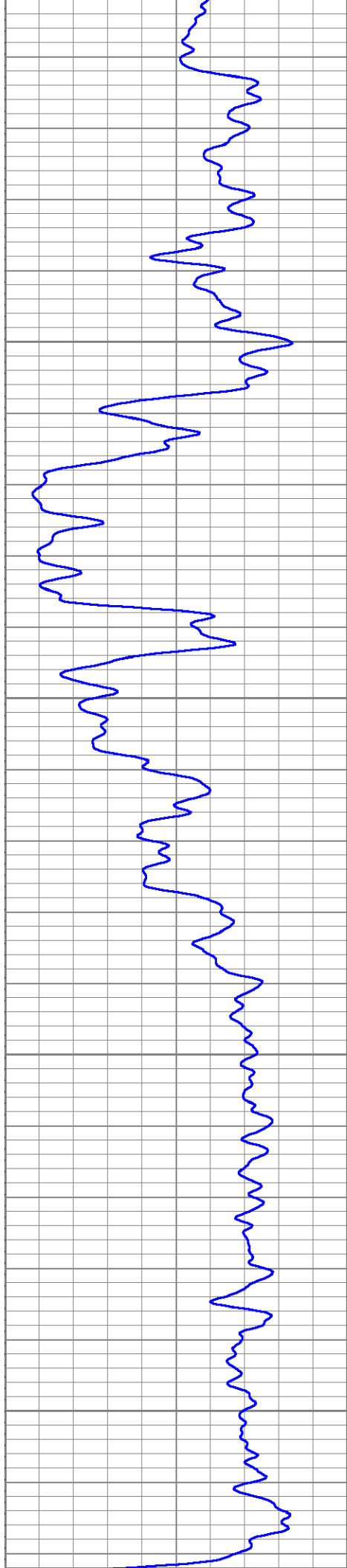


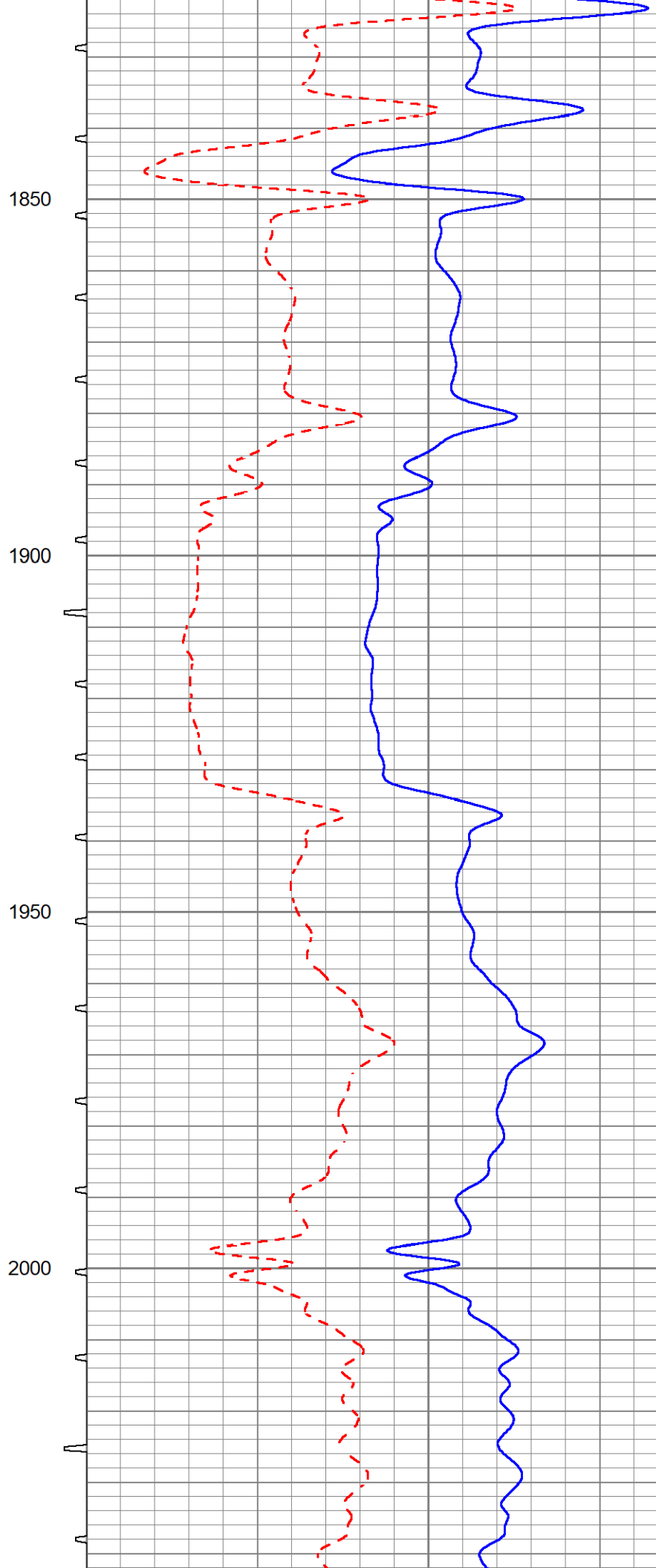
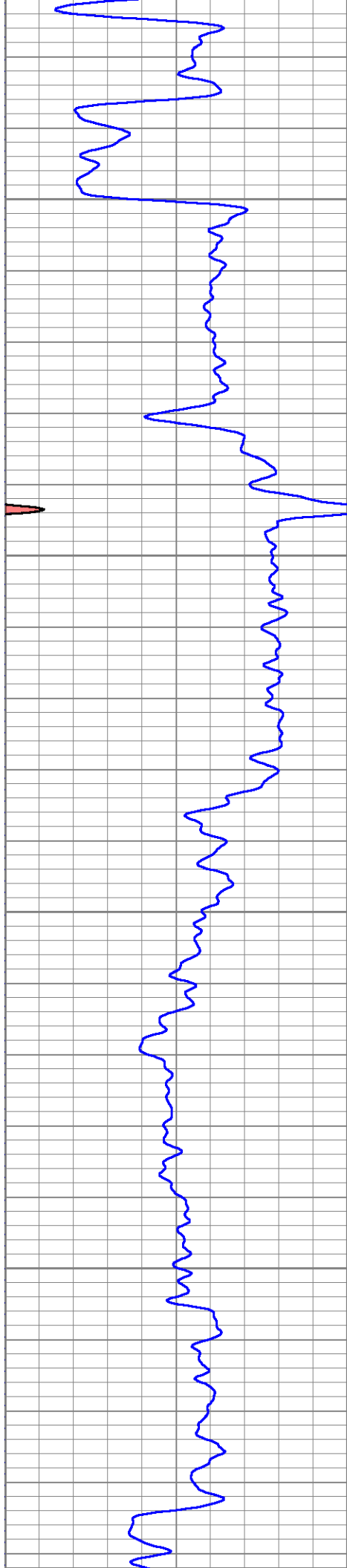


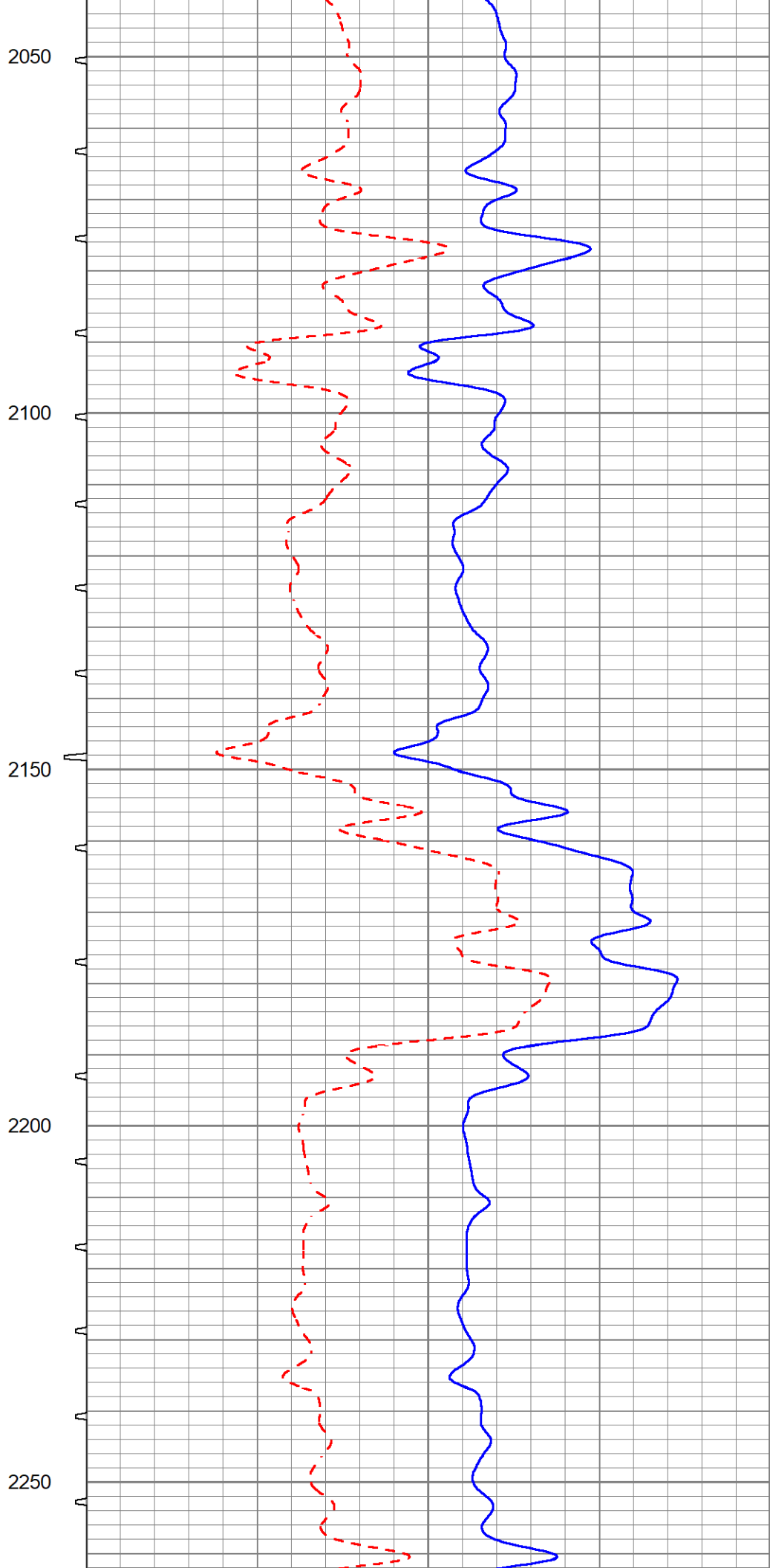
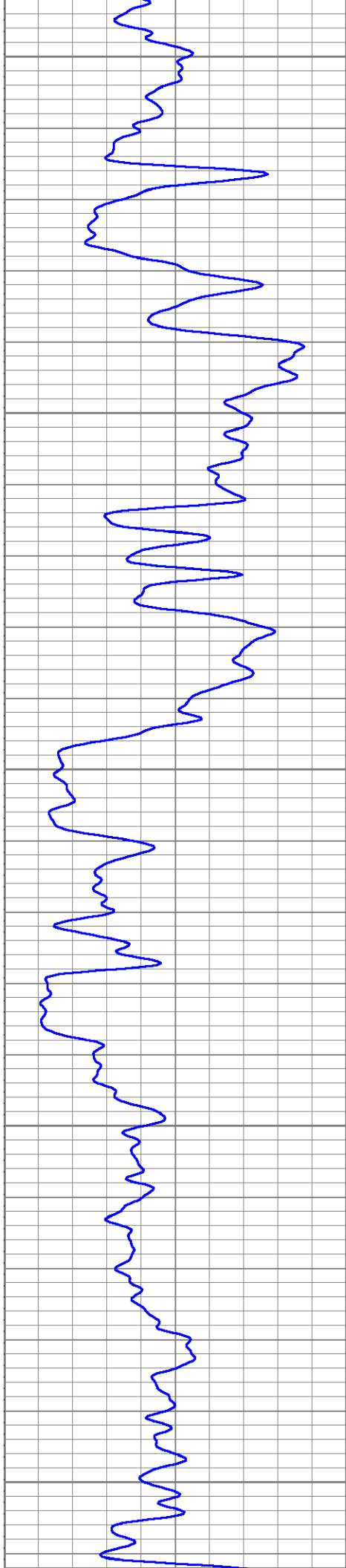


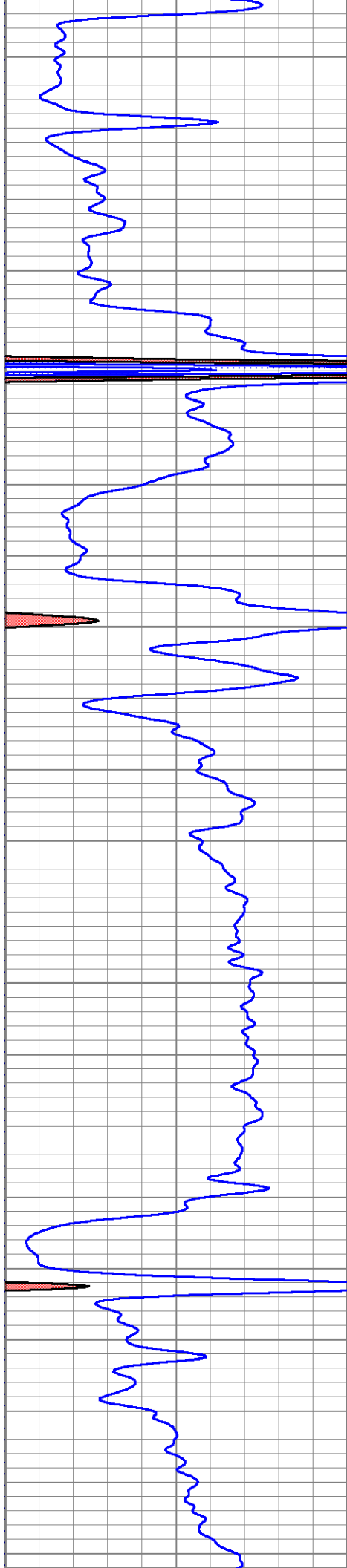










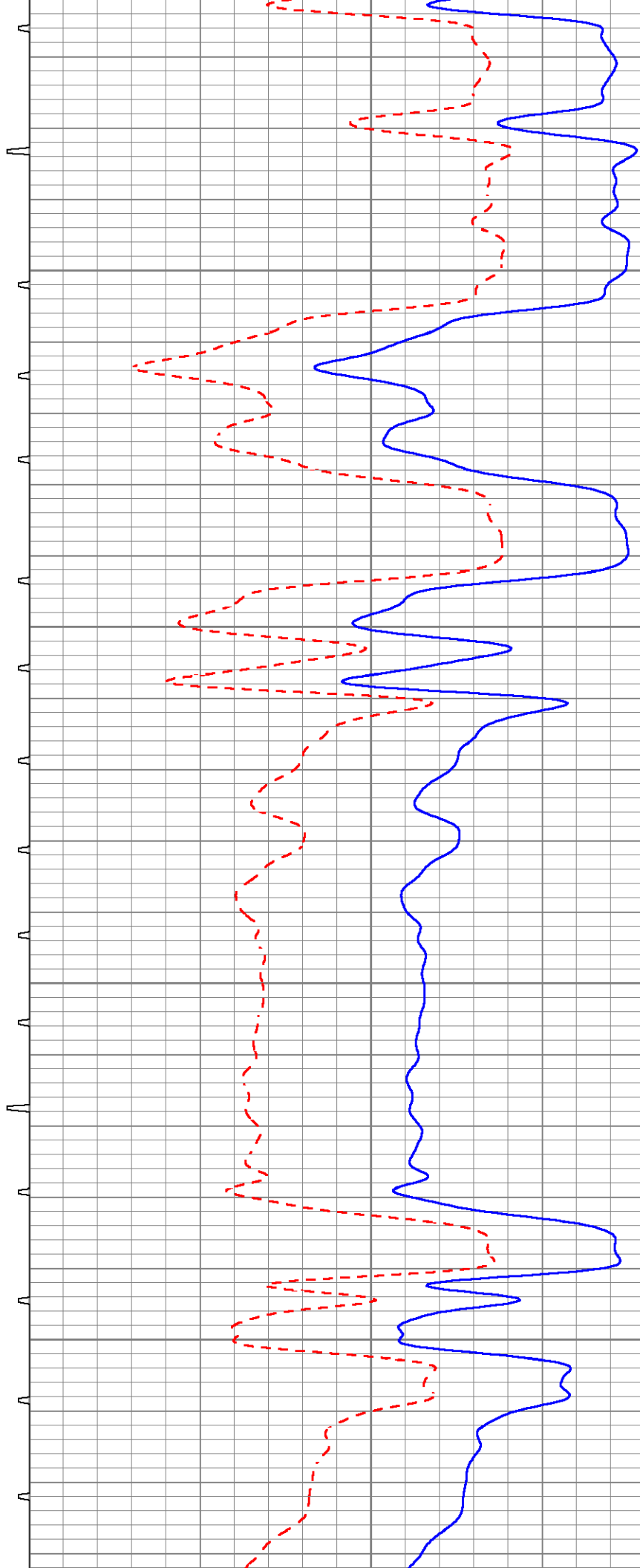


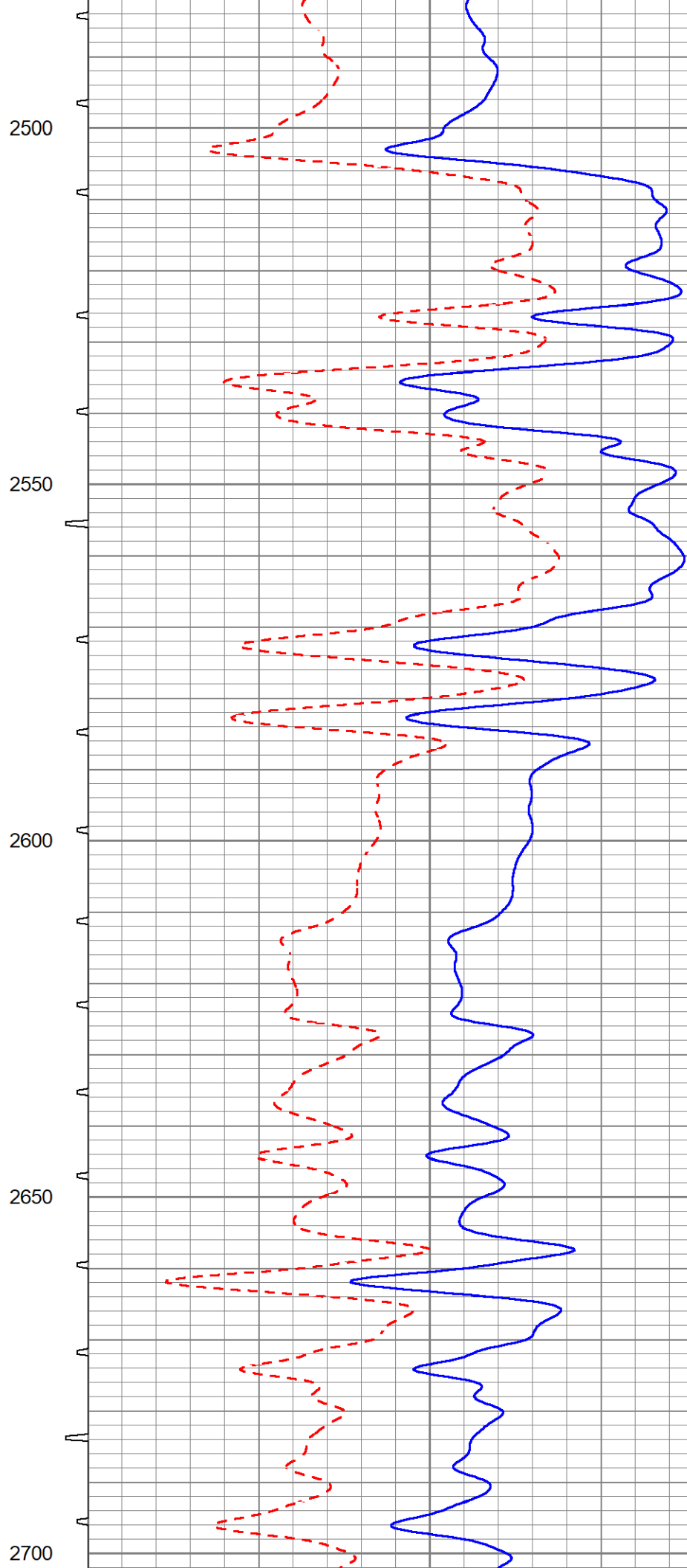
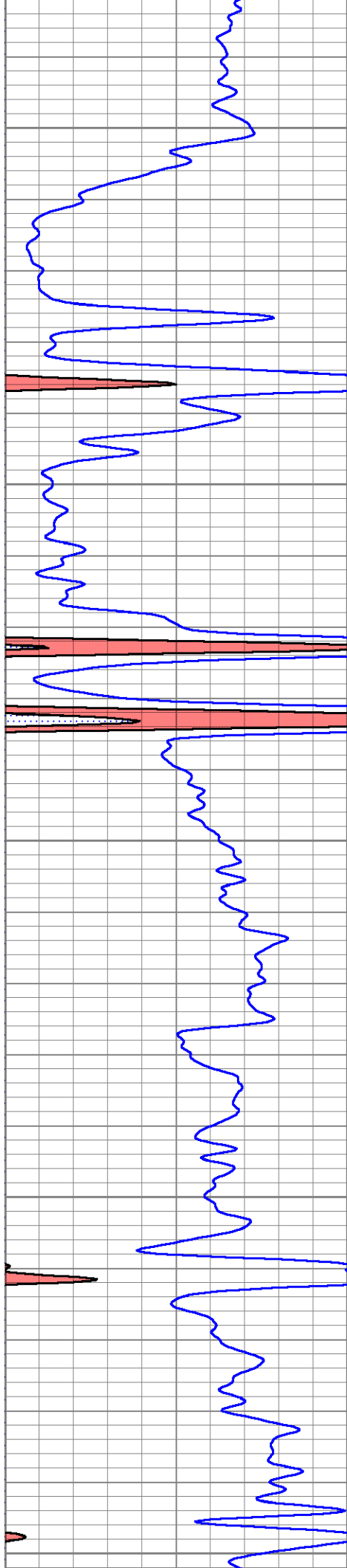
2300

2350

2400

2450





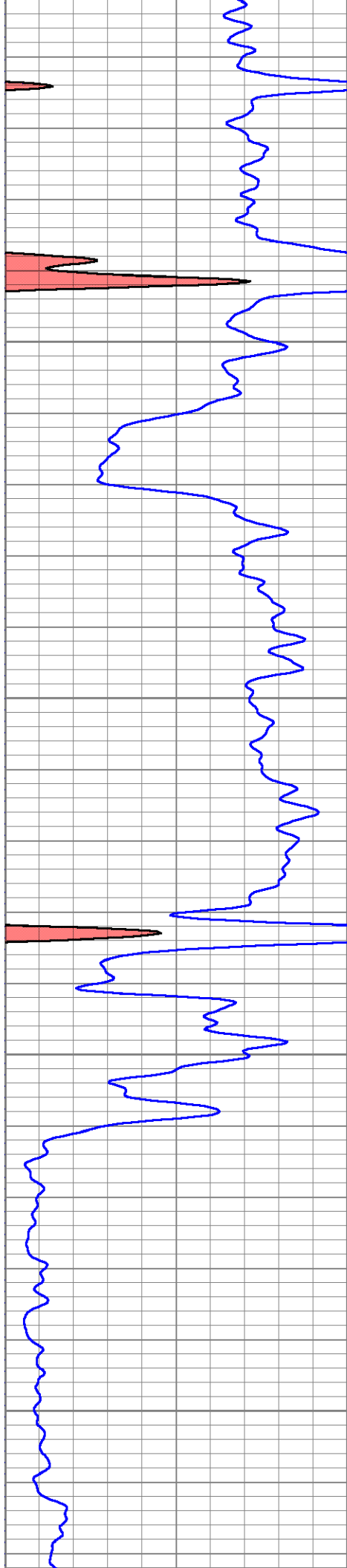
2500

2550

2600

2650

2700

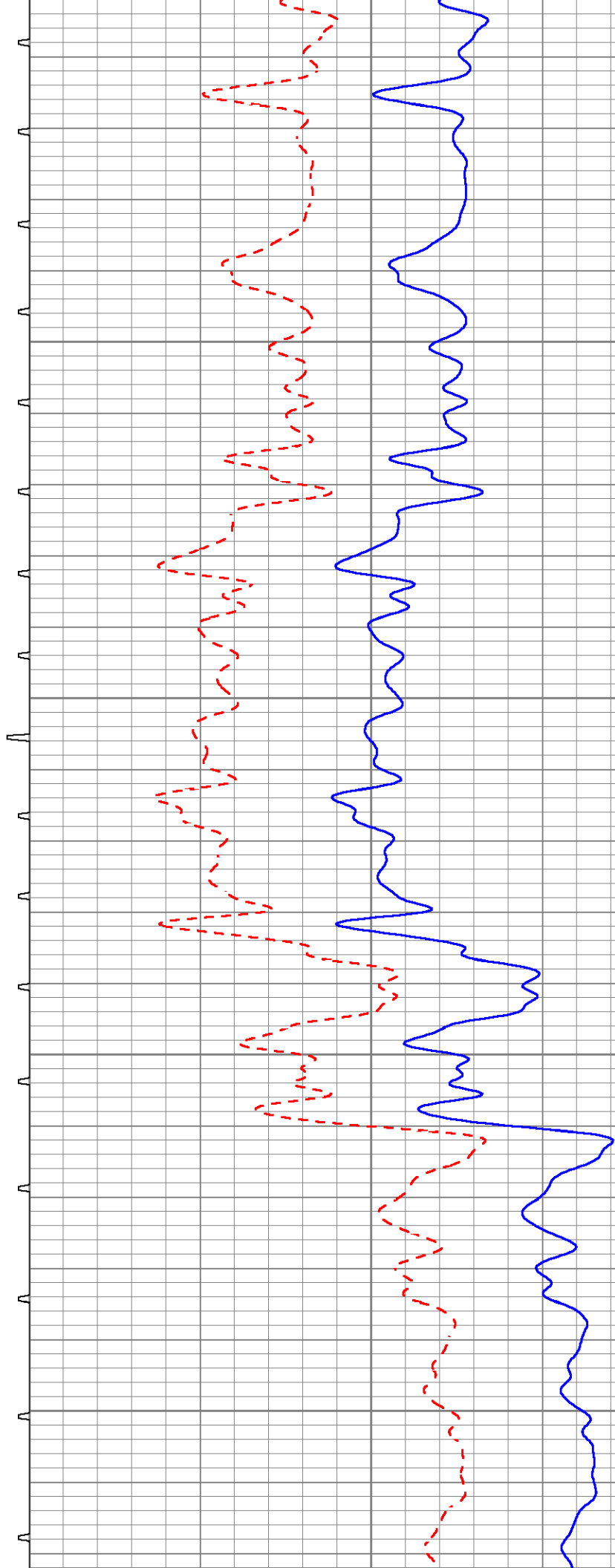


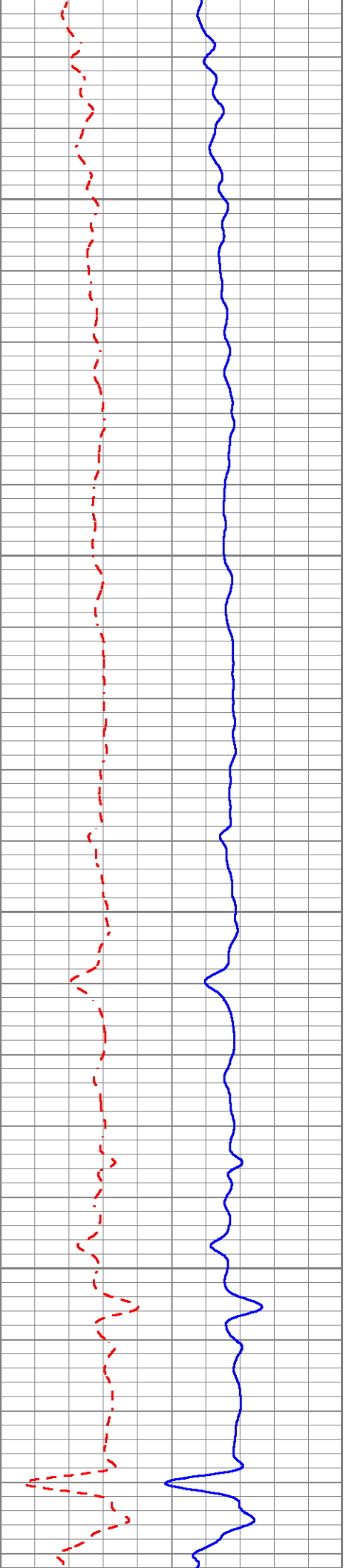
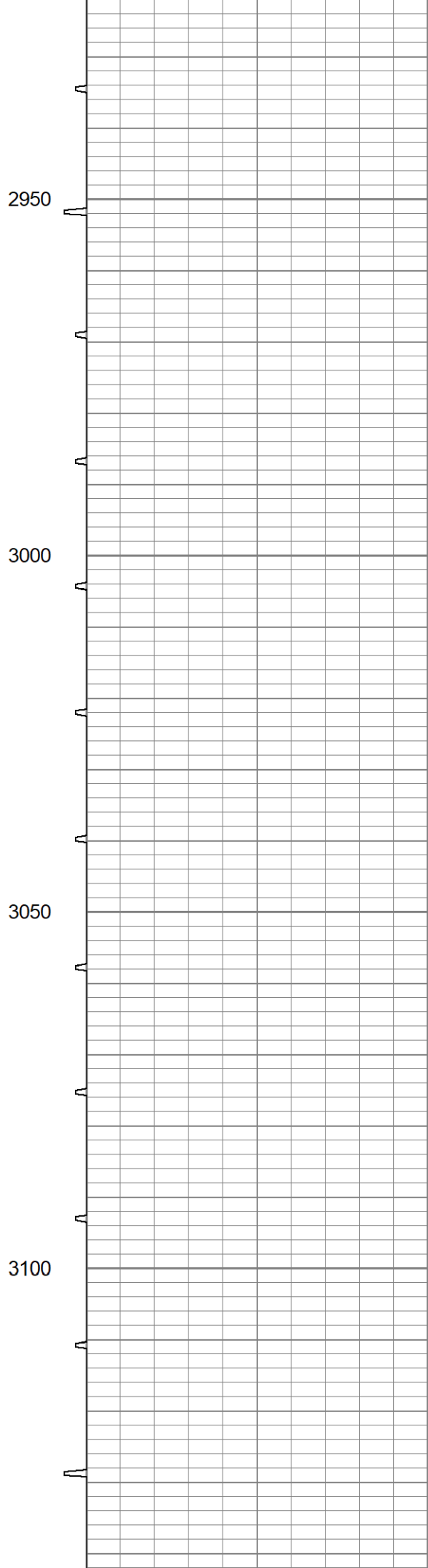
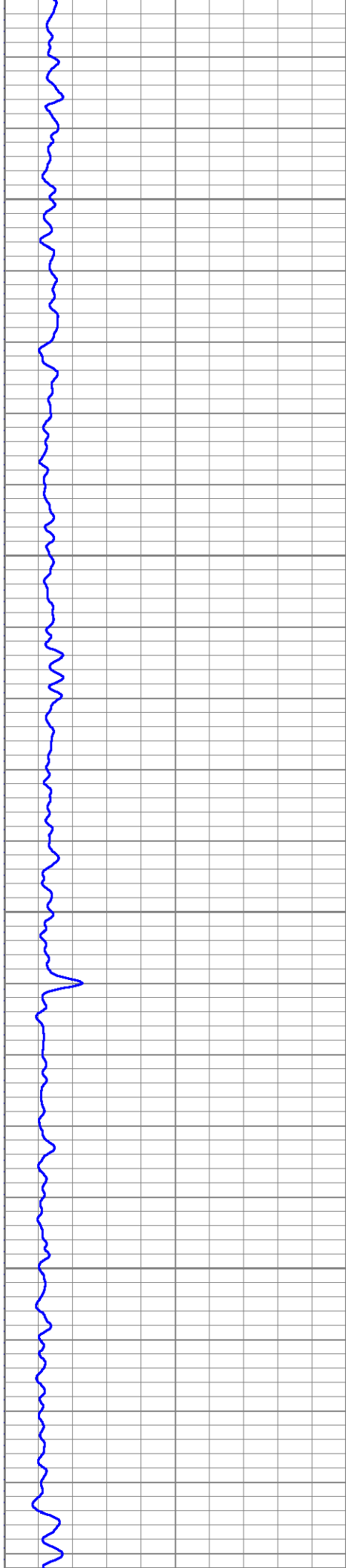
2750

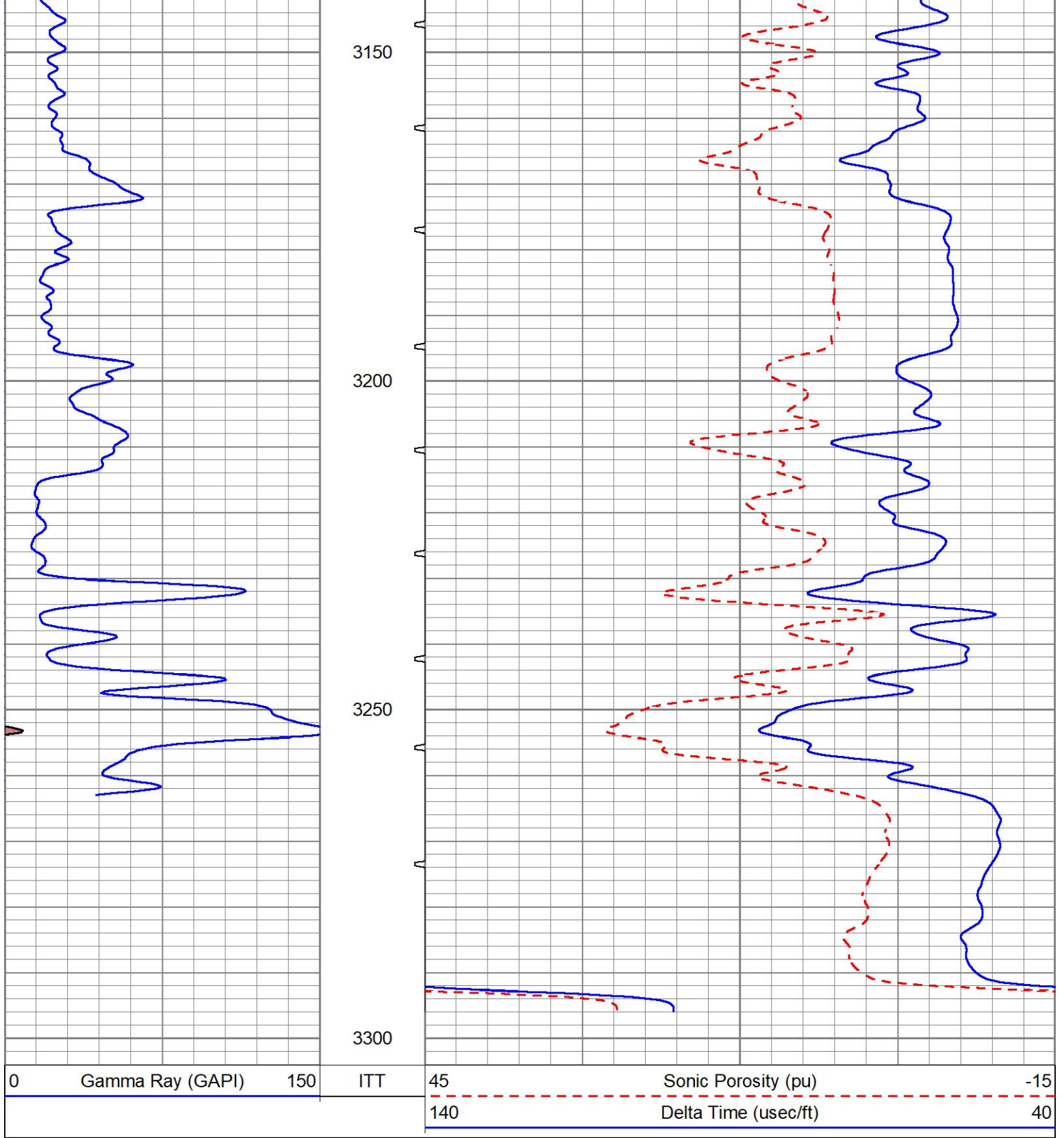
2800

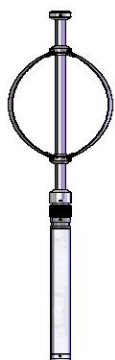
2850

2900







Sensor	Offset (ft)	Schematic	Description	Length (ft)	O.D. (in)	Weight (lb)
CENT TR_Mon	24.31 24.31		CENT-PROBE	4.48	3.50	20.00

WVF1	14.50					
WVF3	12.67		SLT-GEAR (SLT1) Probe Sonic Tool	15.83	3.50	140.00
WVF2	9.67					
WVF4	8.67					
CENT	4.00		CENT-SDSCENT Centralizer for testing	4.00	3.25	20.00
Dataset: ow2-9163 lawco energy.db: field/well/BHC/pass1 Total length: 24.31 ft Total weight: 180.00 lb O.D.: 3.50 in						