



COMPOSITE LOG

Company LAWCO HOLDINGS, LLC.
Well RADCLIFF # 4-4
Field COUNTRYMAN
County COWLEY
State KANSAS

Location: API #: 15-035-24700-0000
 NW SW SW SW
 493' FSL & 258' FEL
 SEC 4 TWP 33S RGE 7E
 Elevation 1337'
 Other Services: DIL, MEL, SONIC
 Elevation

Date	11-12-2018
Run Number	ONE
Depth Driller	3304'
Depth Logger	3304'
Bottom Logged Interval	3302'
Top Log Interval	SURFACE
Casing Driller	8 5/8" @ 317'
Casing Logger	8 5/8" @ 317'
Bit Size	7 7/8"
Type Fluid in Hole	CHEMICAL
Density / Viscosity	8.7 / 54
pH / Fluid Loss	9.5 / 8.6
Source of Sample	FLOWLINE
Rm @ Meas. Temp	2.20 @ 60
Rmt @ Meas. Temp	2.62 @ 60
Rmc @ Meas. Temp	1.78 @ 60
Source of Rmf / Rmc	CAL
Rm @ BHT	1.49 @ 107
Time Circulation Stopped	12:00 AM
Time Logger on Bottom	2:30 AM
Maximum Recorded Temperature	107
Equipment Number	OW2
Location	HOMINY, OK
Recorded By	W. LOWERY
Witnessed By	MR. MACKAY

<<< Fold Here >>>

All interpretations are opinions based on inferences from electrical or other measurements and we cannot and do not guarantee the accuracy or correctness of any interpretation, and we shall not, except in the case of gross or willful negligence on our part, be liable or responsible for any loss, costs, damages, or expenses incurred or sustained by anyone resulting from any interpretation made by any of our officers, agents or employees. These interpretations are also subject to our general terms and conditions set out in our current Price Schedule.

Comments

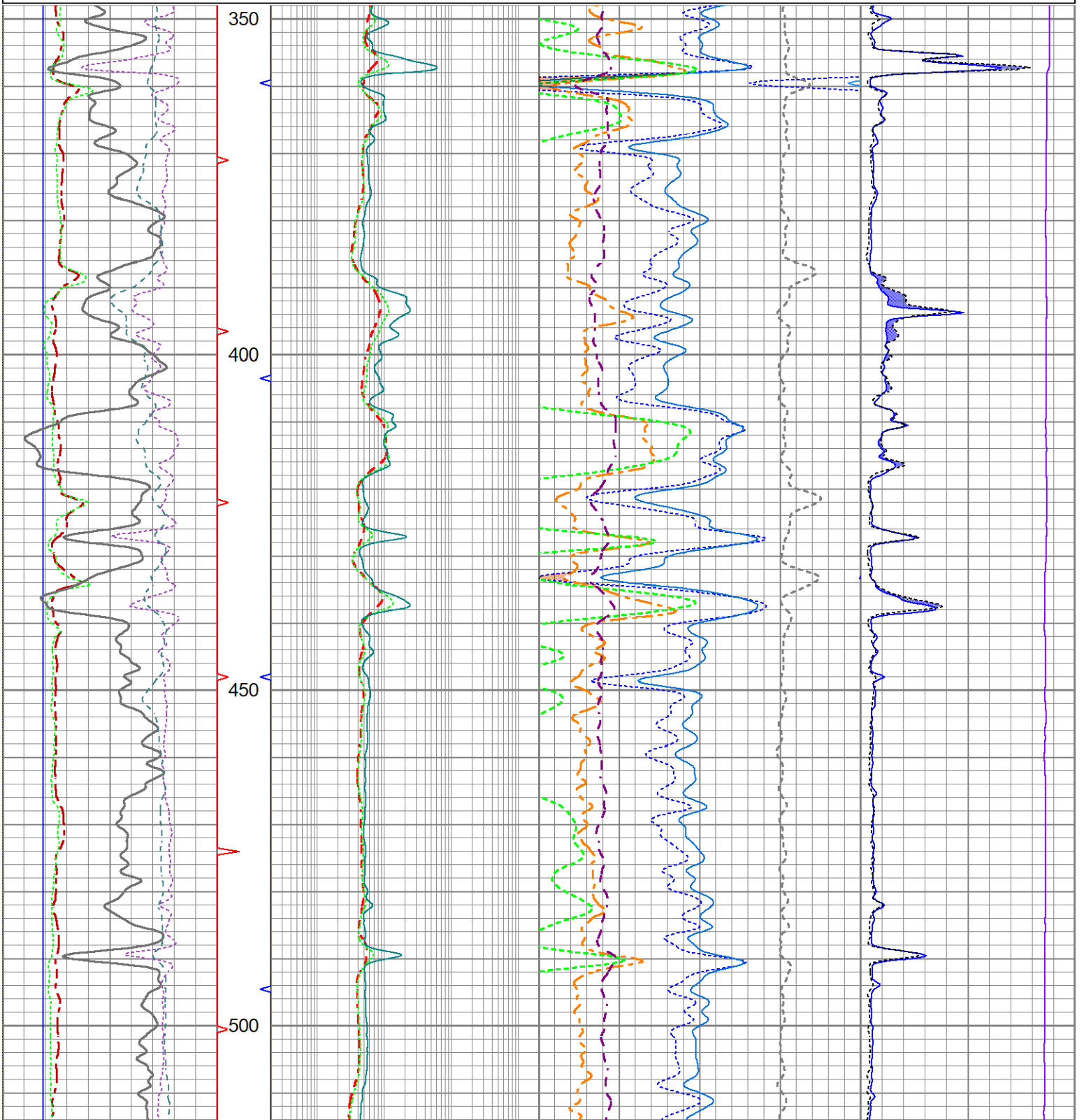
OW2-9163
 MATRIX LIMESTONE 2.71 G/CC
 ABHV COMPUTED WITH 5 1/2" CASING
 CREW : C. SHAMBLES, T. LUNN

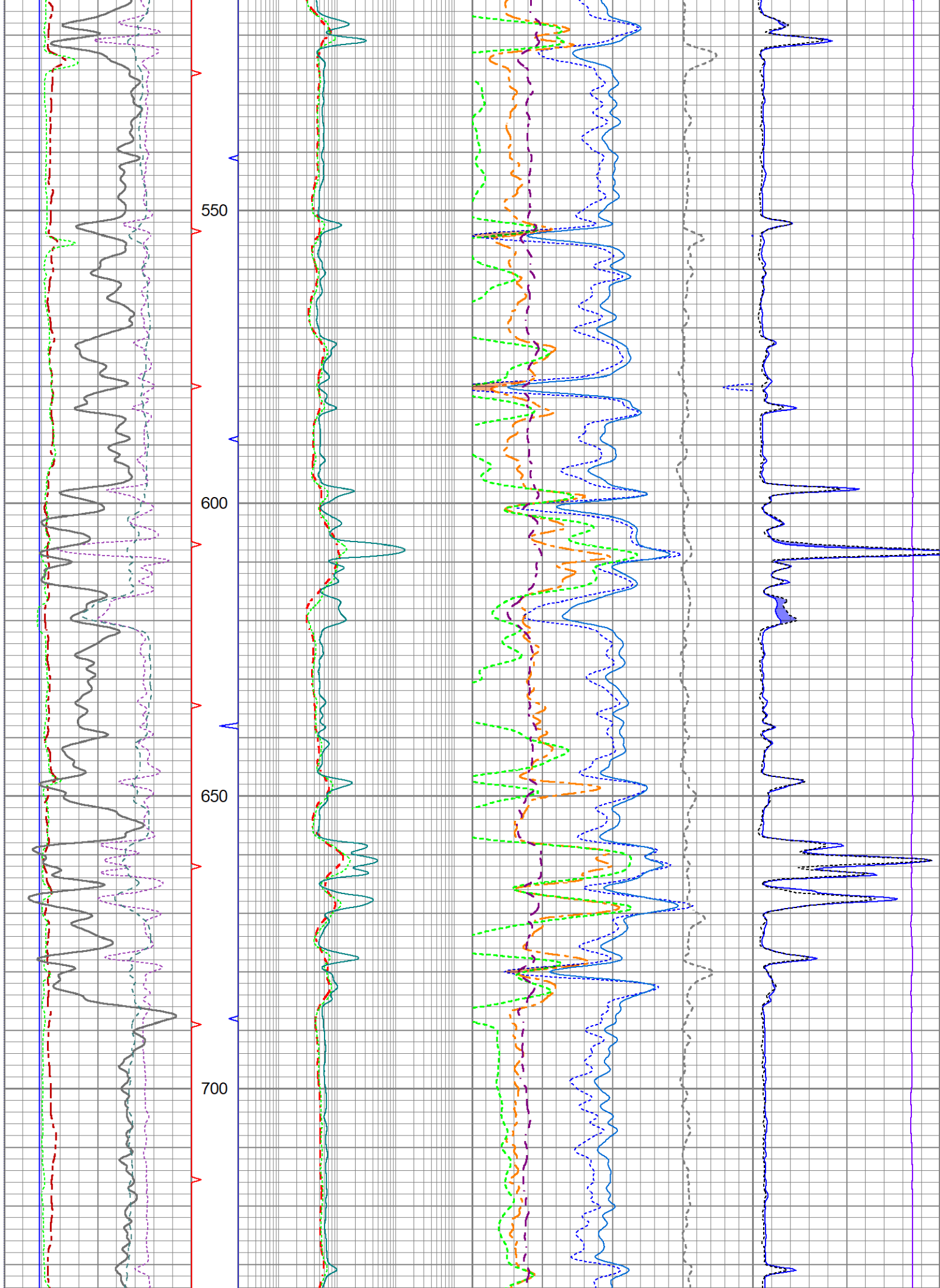


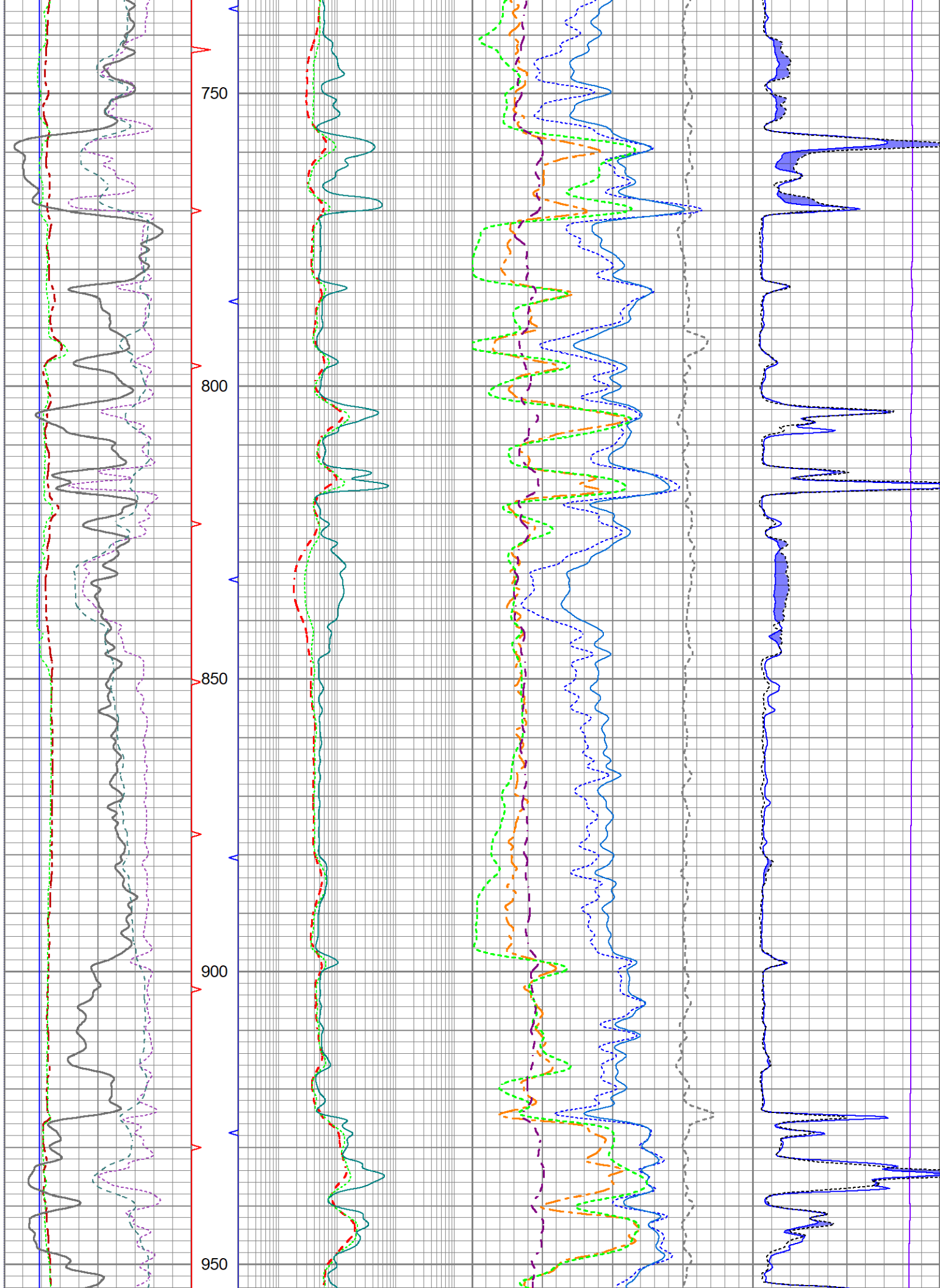
Quick Look Presentation

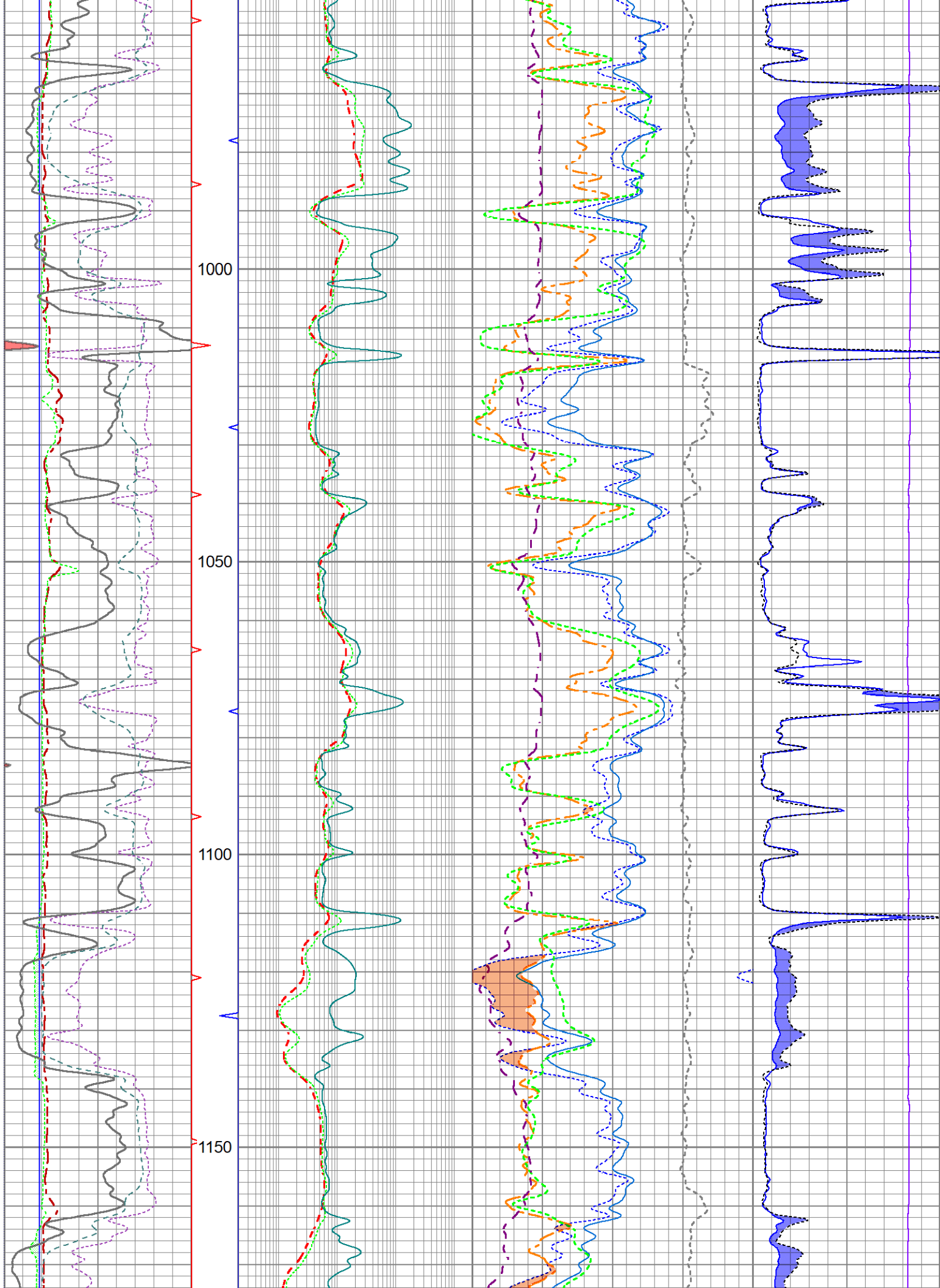
Database File ow2-9163 lawco energy.db
 Dataset Pathname LDTDILM/merge4
 Presentation Format lawcomp
 Dataset Creation Mon Nov 12 06:43:55 2018
 Charted by Depth in Feet scaled 1:240

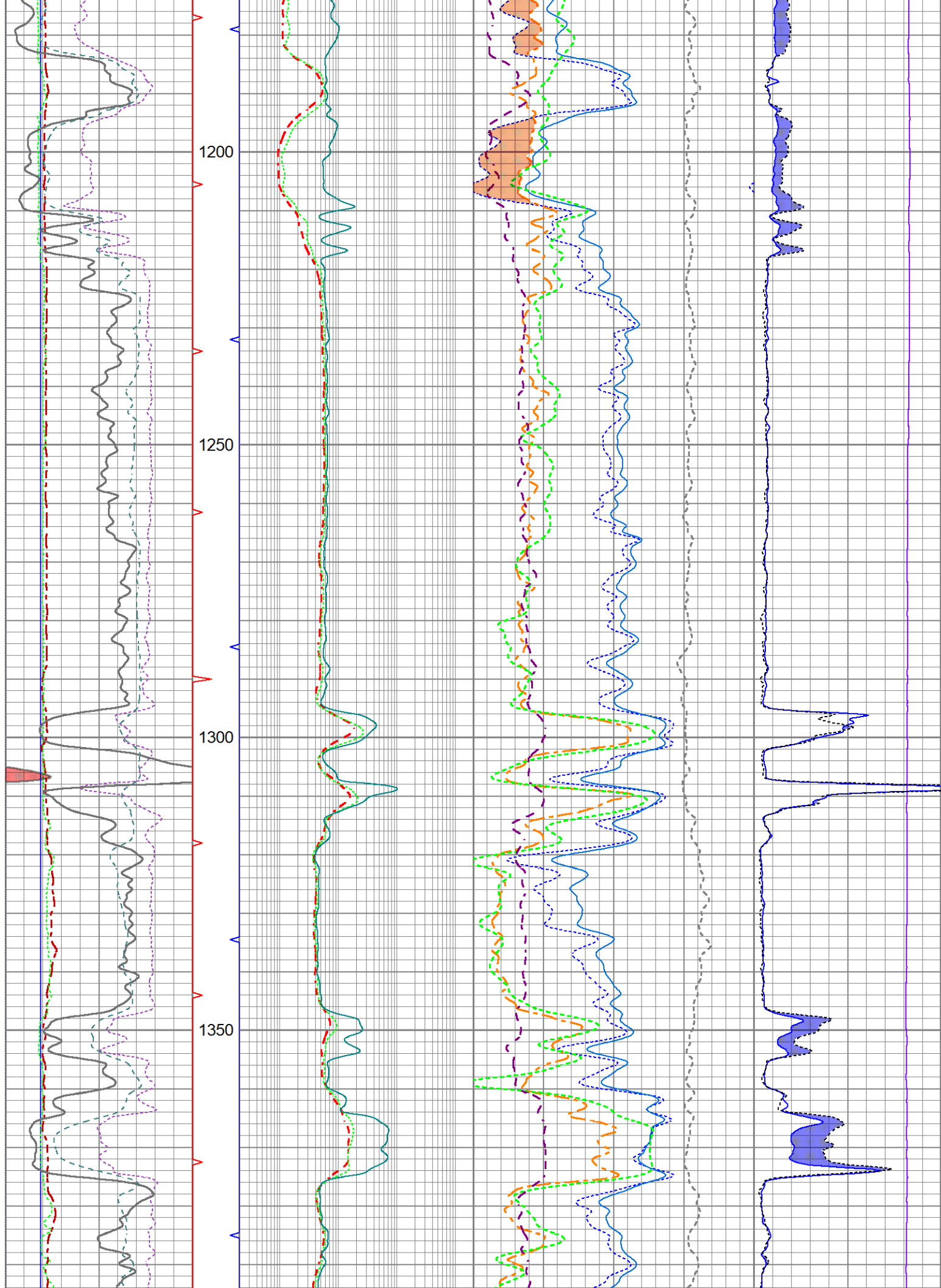
6	Bit Size (in)	16	TBHV	0.2	Resistivity (Ohm-m)	2000	30	Density Porosity (pu)	-10	500	Line Tension (lb)	0	
6	Density Caliper (in)	16		0.2	Medium (Ohm-m)	2000	30	Neutron Porosity (pu)	-10		Micro Inverse		
6	MCAL (in)	16	ABHV	0.2	Lateral Log (Ohm-m)	2000	2	Bulk Density (g/cc)	3	0	(Ohm-m)	60	
-160	Rxo\Rt	40					45	Sonic Porosity (pu)	-15		Micro Normal		
	Gamma Ray						0	Pe	10	Correction	0	(Ohm-m)	60
0	(GAPI)	150							-0.5	(g/cc)	0.5		
0	SP (mV)	200											

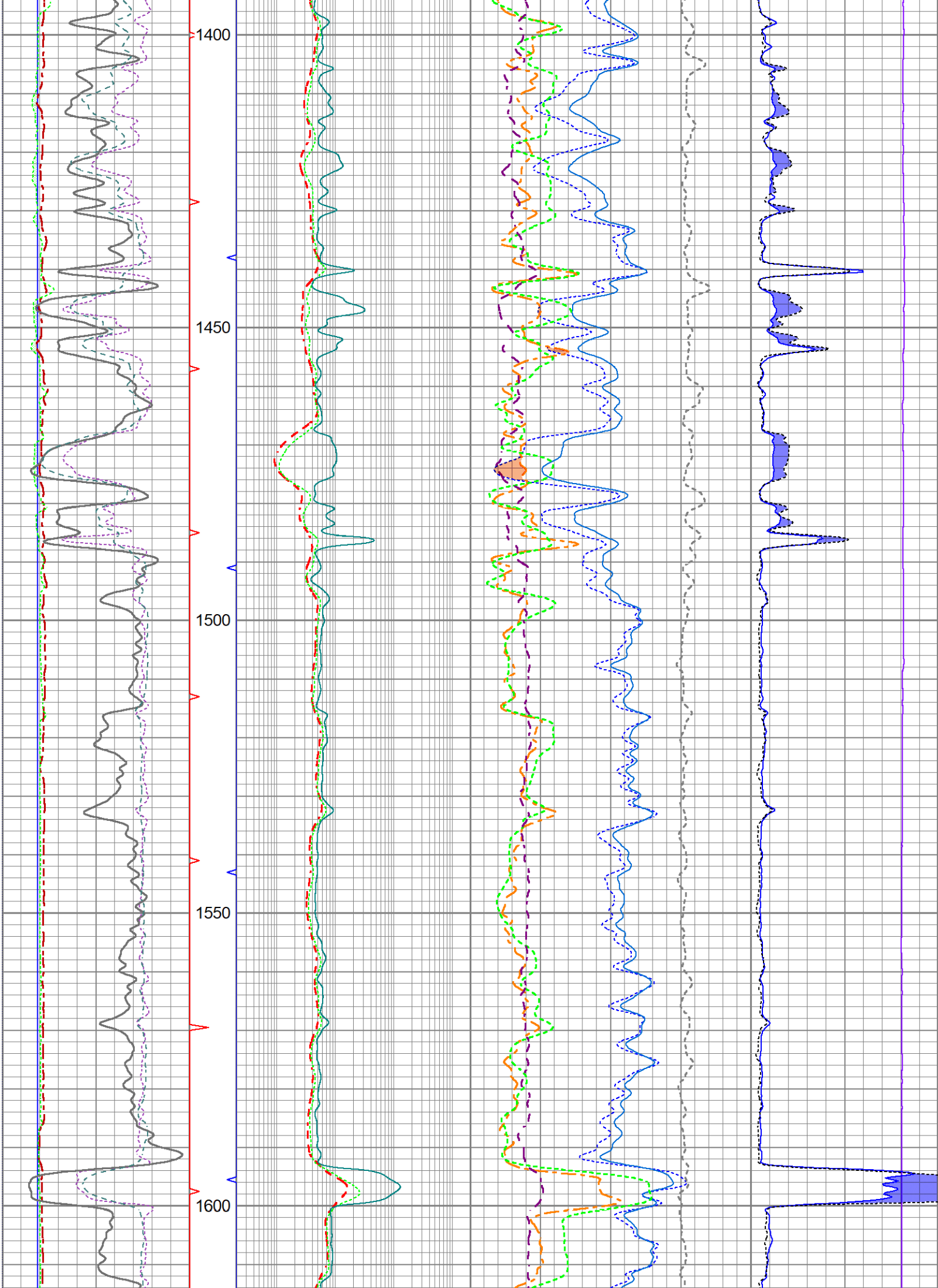


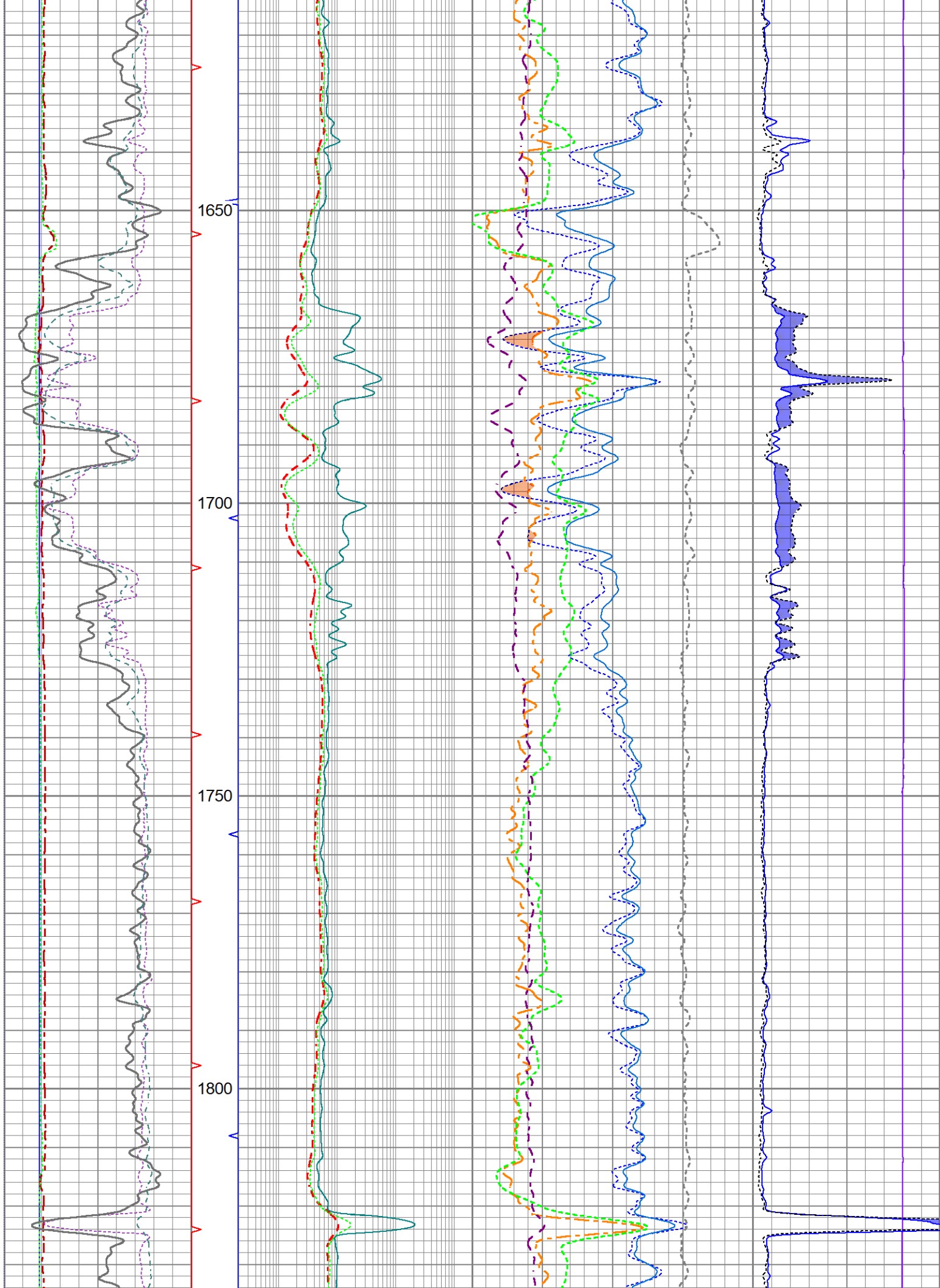


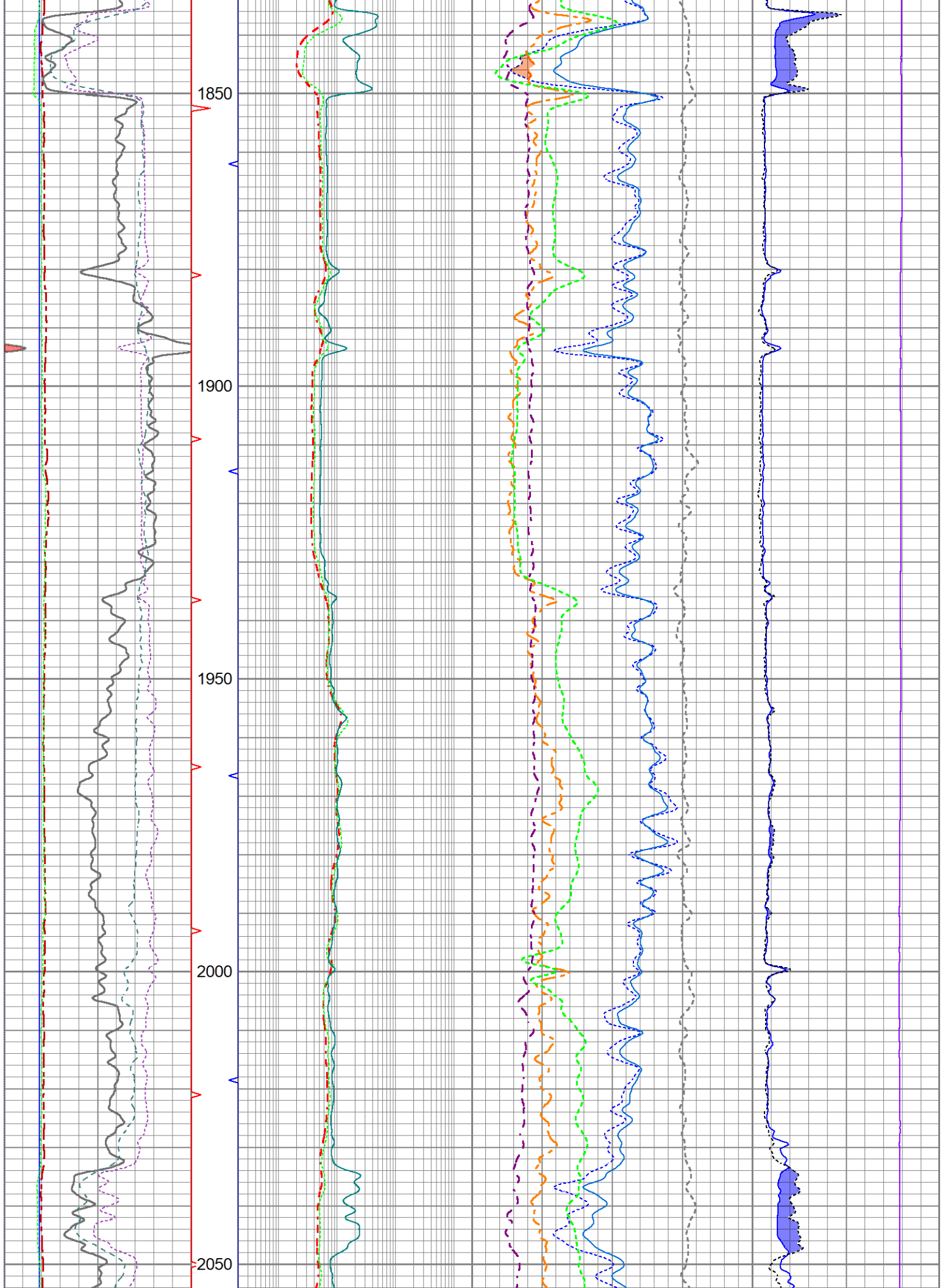


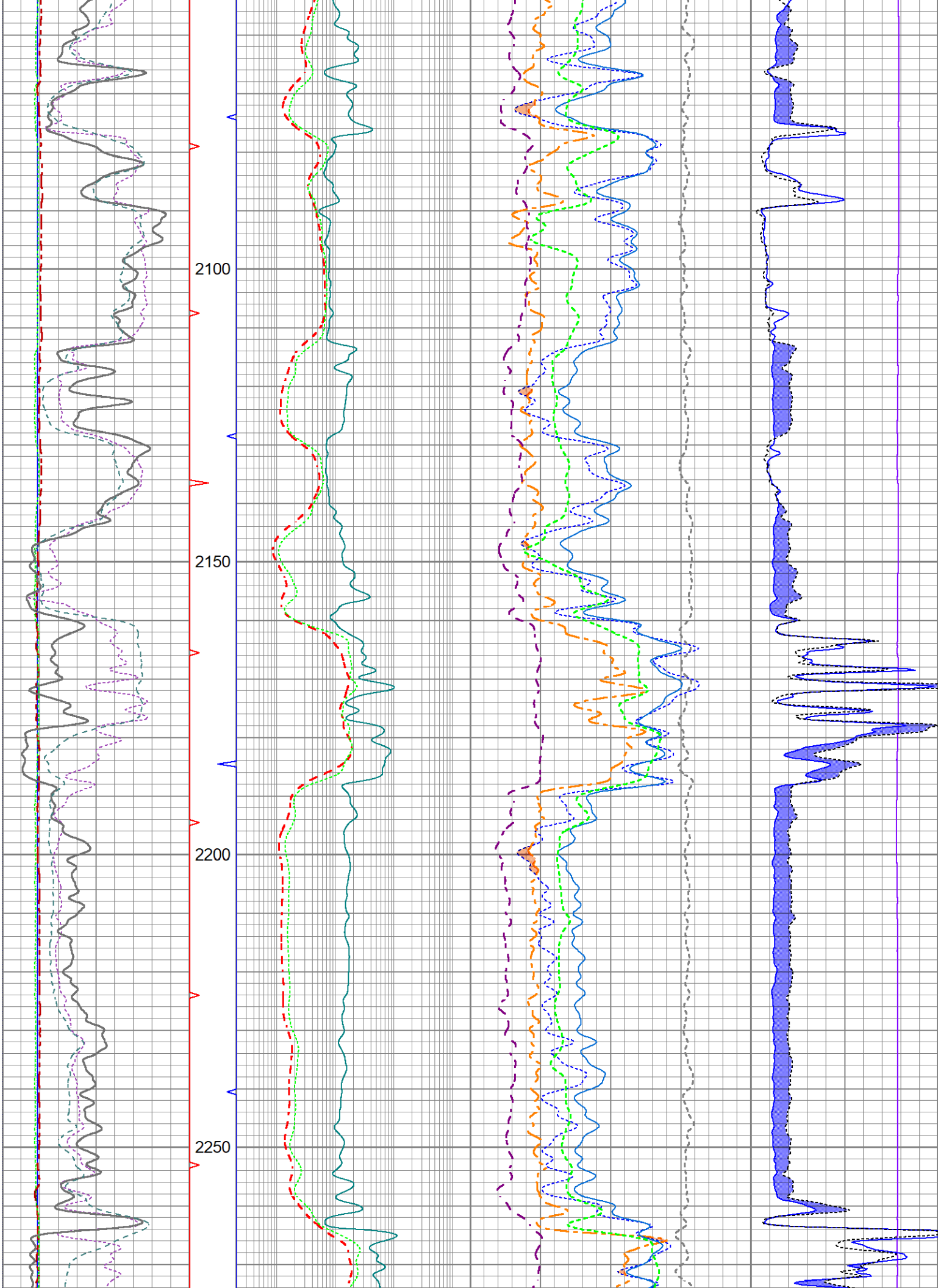


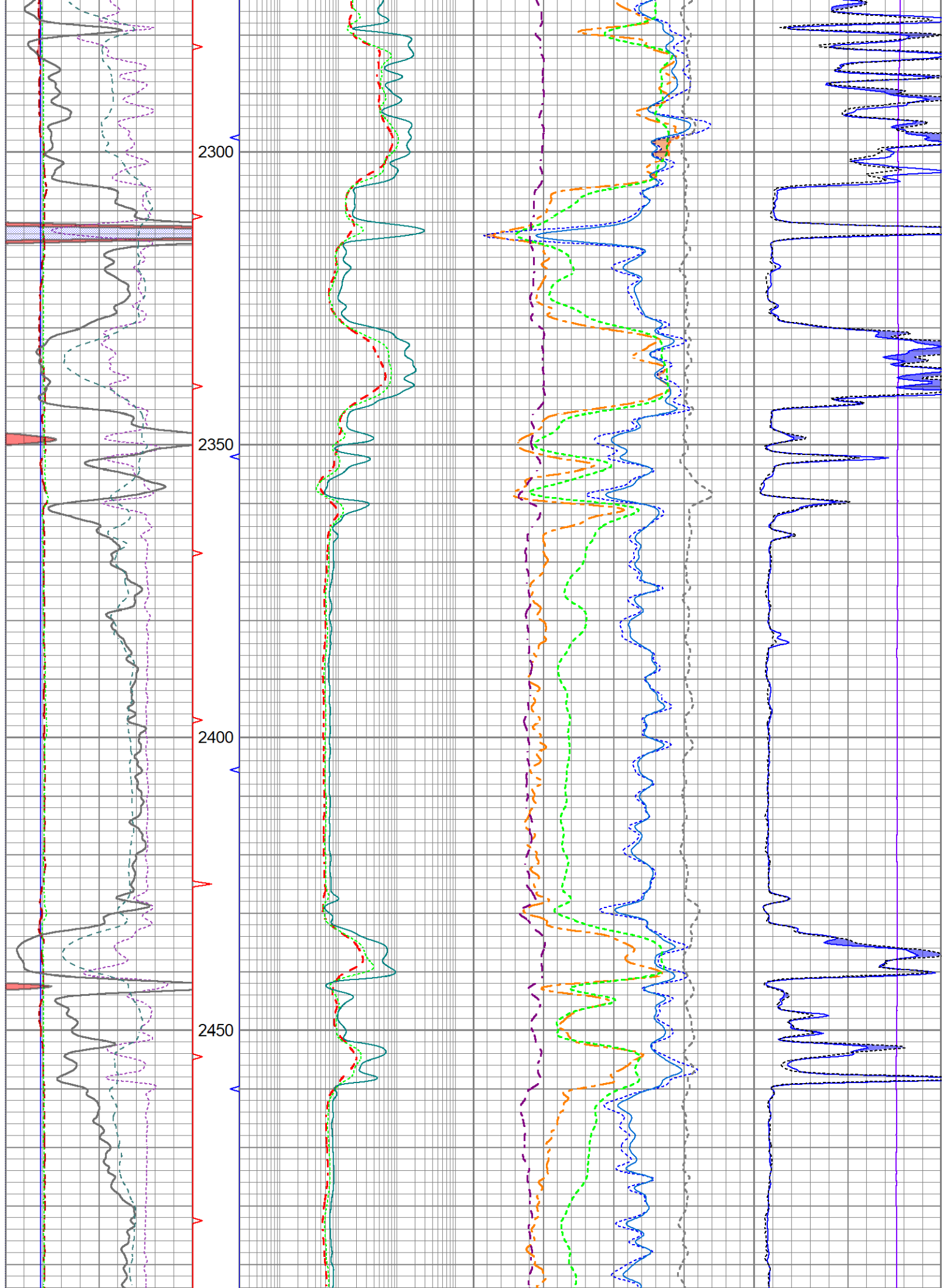


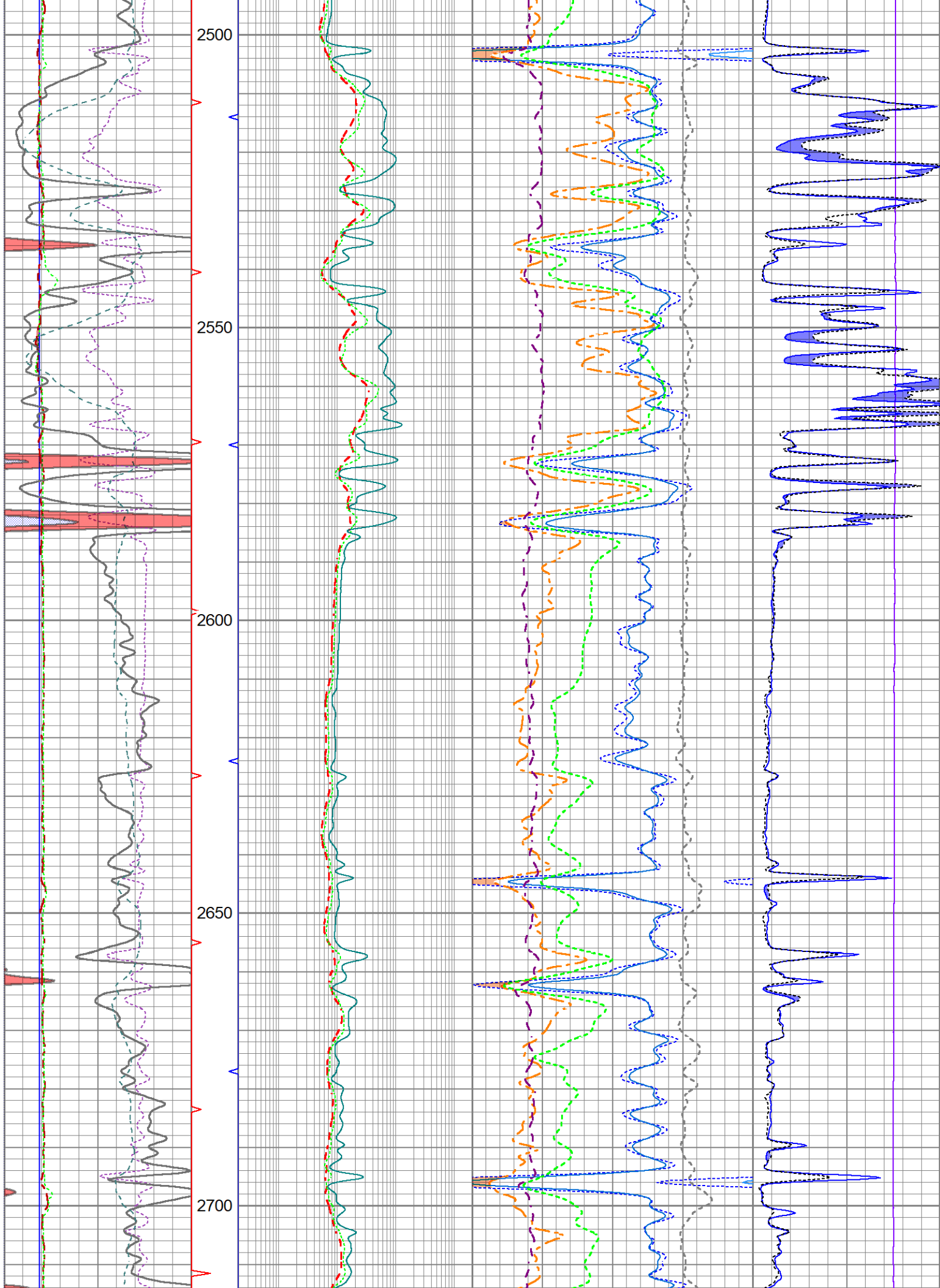


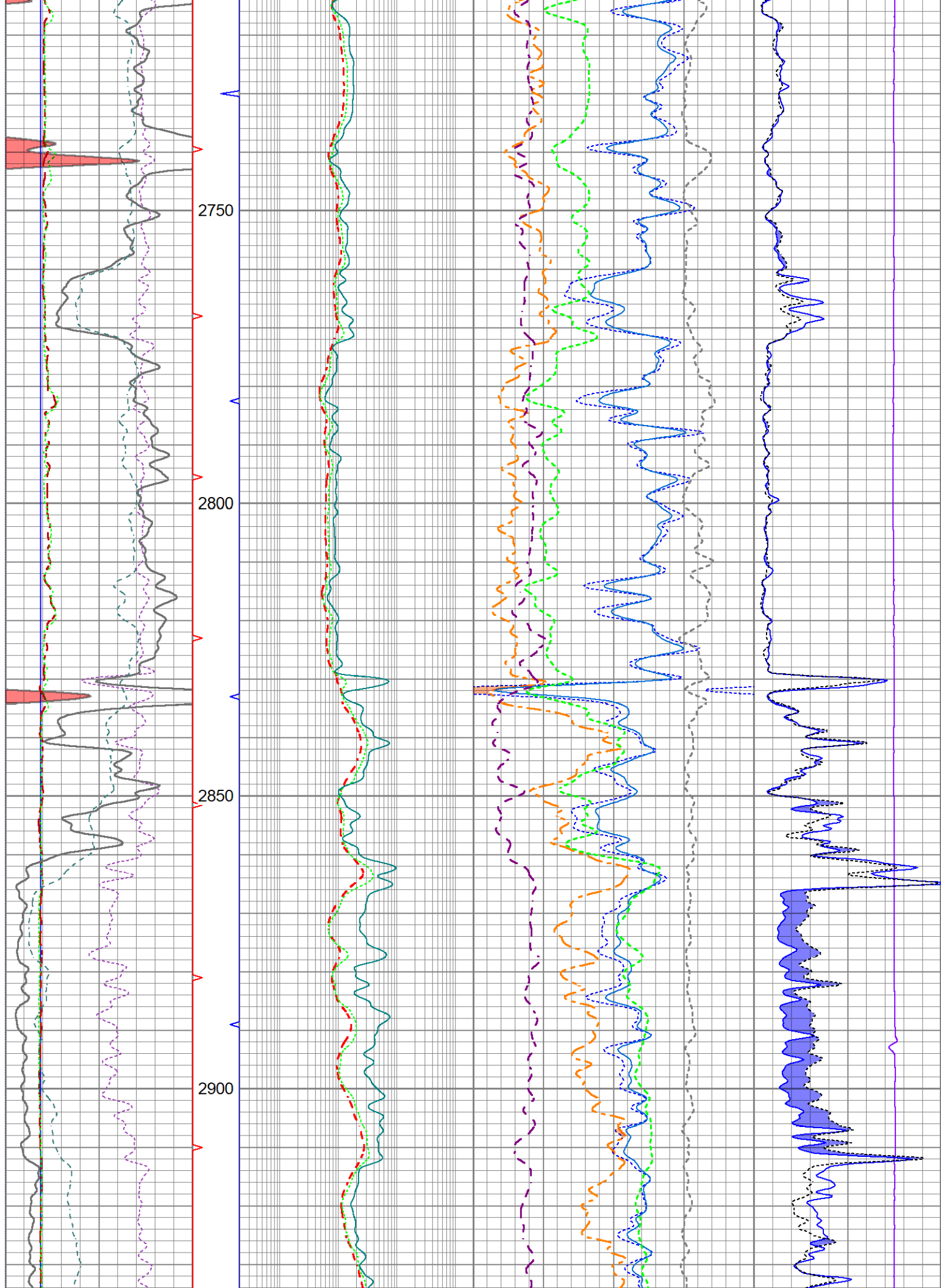


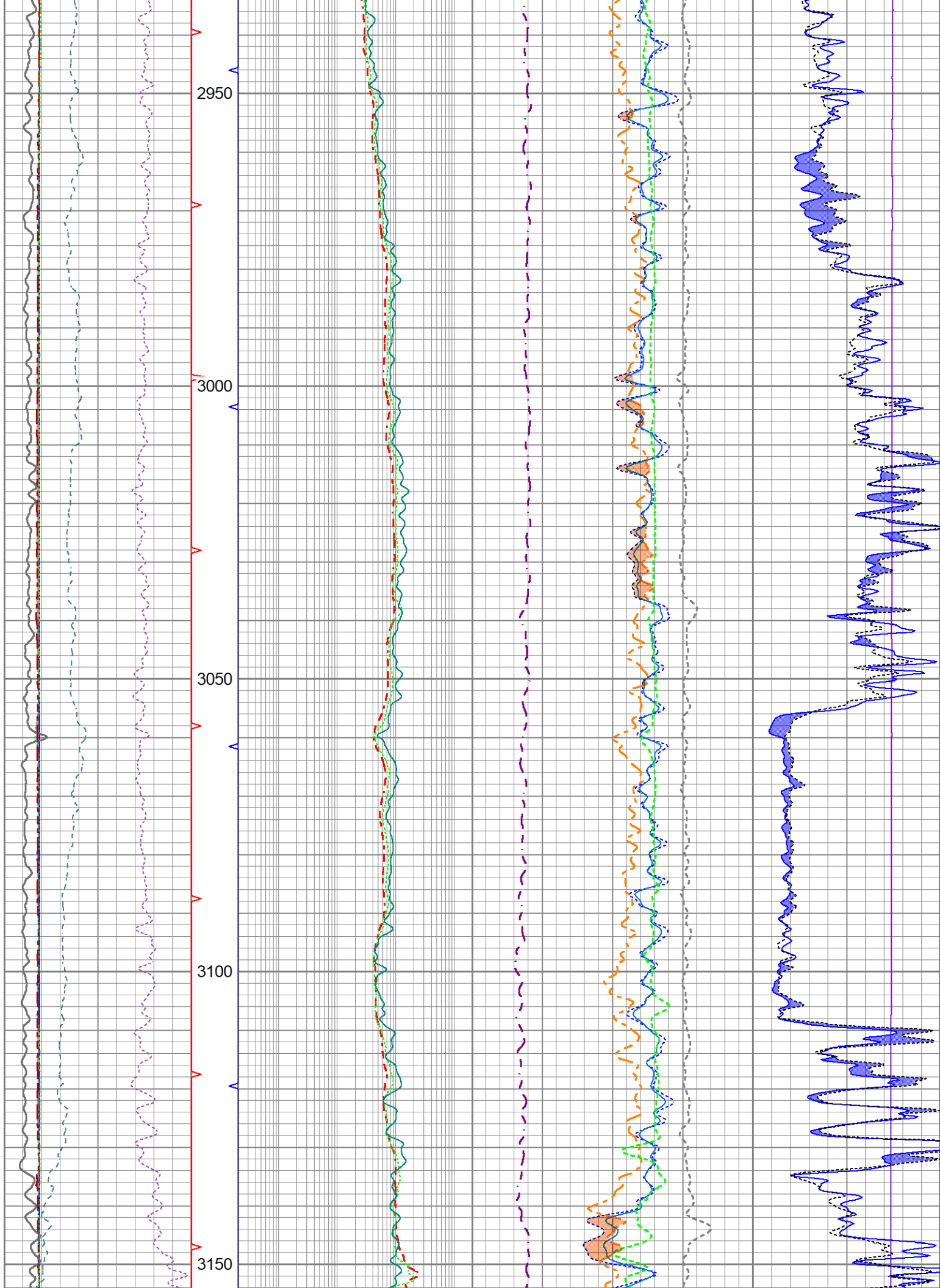


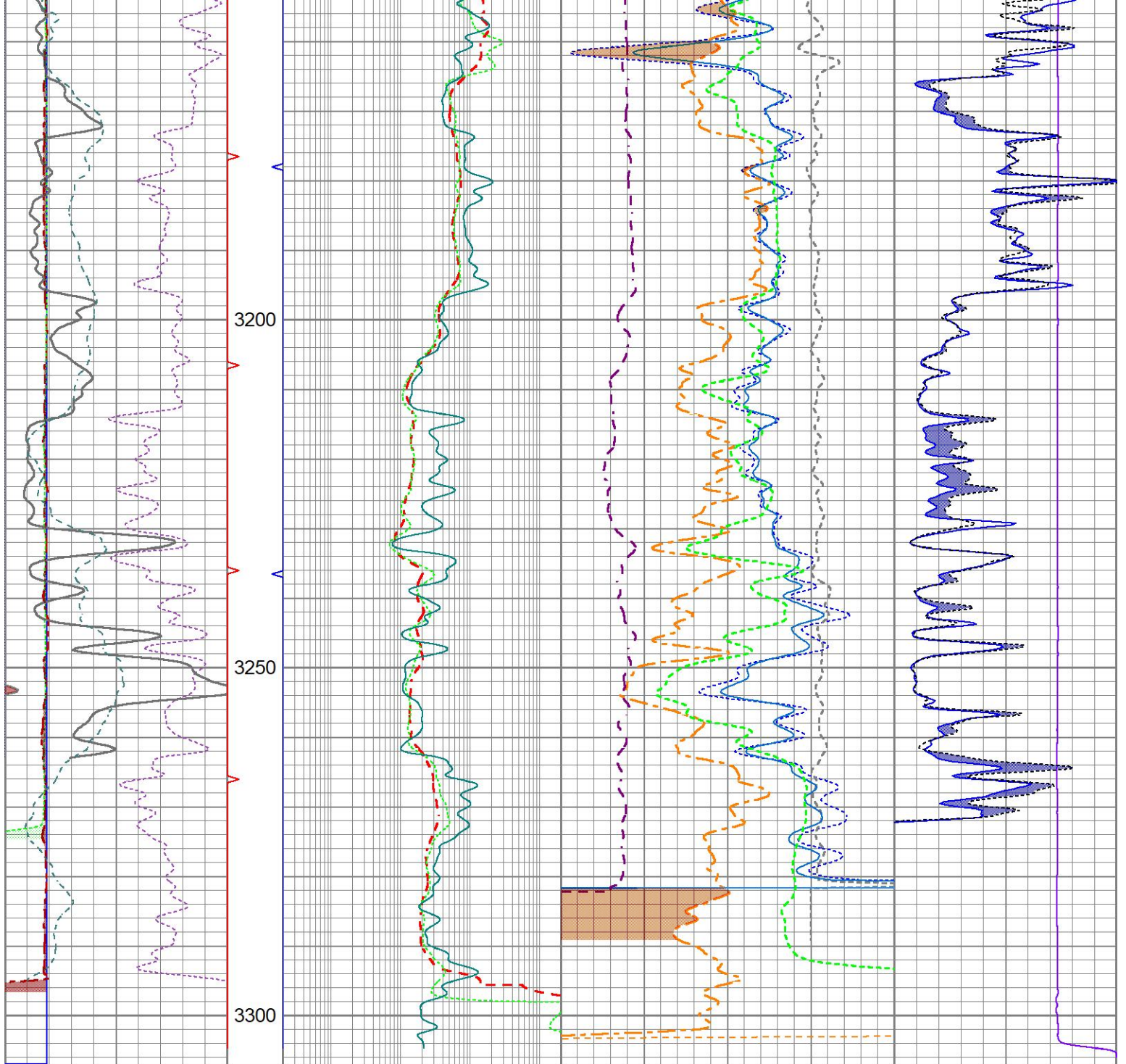






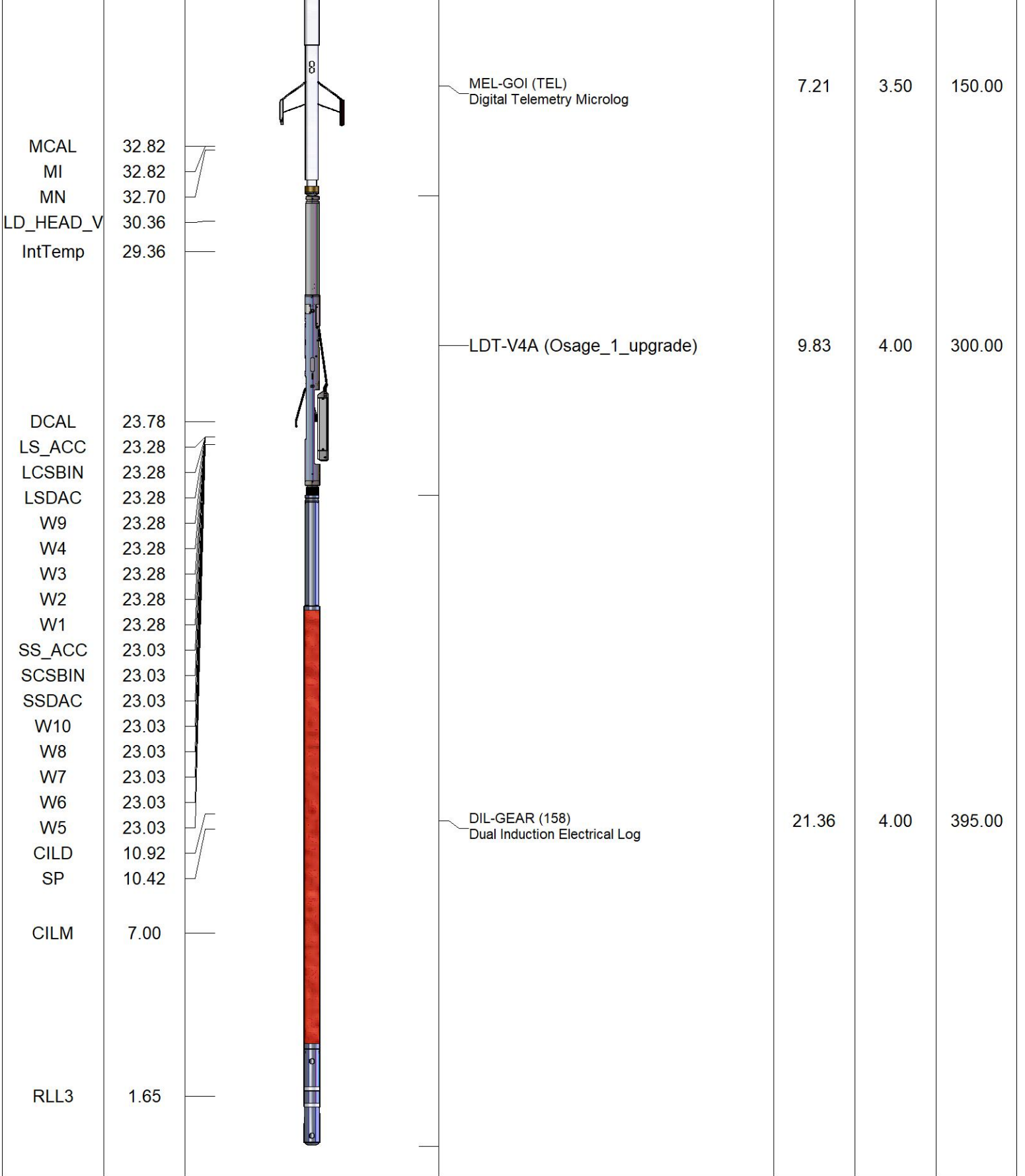






6	Bit Size (in)	16	TBHV	0.2	Resistivity (Ohm-m)	2000	30	Density Porosity (pu)	-10	500(Line Tension (lb)	0
6	Density Caliper (in)	16		0.2	Medium (Ohm-m)	2000	30	Neutron Porosity (pu)	-10	Micro Inverse	
6	MCAL (in)	16	ABHV	0.2	Lateral Log (Ohm-m)	2000	2	Bulk Density (g/cc)	3	(Ohm-m)	60
-160	Rxo\Rt	40					45	Sonic Porosity (pu)	-15	Micro Normal	
	Gamma Ray						0	Pe	10	Correction	0
0	(GAPI)	150							-0.5 (g/cc)	0.5	
0	SP (mV)	200									

Sensor	Offset (ft)	Schematic	Description	Length (ft)	O.D. (in)	Weight (lb)
GRTemp	40.66		GR-PTS_OH (FW1306-49)	3.69	3.38	40.00
GR	39.74		Open Hole Digital Gamma Ray			



Dataset: ow2-9163 lawco energy.db: field/well/LDTDILM/pass1
 Total length: 42.09 ft
 Total weight: 885.00 lb
 O.D.: 4.00 in