



SONIC LOG

Company **LAWCO HOLDINGS, LLC.**
 Well **RADCLIFF # 6-5**
 Field **COUNTRYMAN**
 County **COWLEY** State **KANSAS**

Location: **SE NE NE SE**
2050' FSL & 200' FEL
 API #: **15-035-24699-0000**
 SEC 5 TWP 33S RGE 7E
 Permanent Datum **GL** Elevation **1314'**
 Log Measured From **GL**
 Drilling Measured From **GL**

Other Services
LDT/SWN,
DIL, MEL
 Elevation
 K.B. ---
 D.F. ---
 G.L. **1314'**

Date	11-01-2018
Run Number	ONE
Depth Driller	3301'
Depth Logger	3303'
Bottom Logged Interval	3301'
Top Log Interval	SURFACE
Casing Driller	8 5/8" @ 317'
Casing Logger	8 5/8" @ 317'
Bit Size	7 7/8"
Type Fluid in Hole	CHEMICAL
Density / Viscosity	9.2 / 58
pH / Fluid Loss	10.5 / 8.2
Source of Sample	FLOWLINE
Rm @ Meas. Temp	2.10 @ 70
Rmt @ Meas. Temp	2.52 @ 70
Rmc @ Meas. Temp	1.68 @ 70
Source of Rmf / Rmc	CAL
Rm @ BHT	1.37 @ 107
Time Circulation Stopped	12:30 AM
Time Logger on Bottom	2:45 AM
Maximum Recorded Temperature	107
Equipment Number	OW2
Location	HOMINY, OK
Recorded By	W. LOWERY
Witnessed By	MR. MACKAY

<<< Fold Here >>>

All interpretations are opinions based on inferences from electrical or other measurements and we cannot and do not guarantee the accuracy or correctness of any interpretation, and we shall not, except in the case of gross or willful negligence on our part, be liable or responsible for any loss, costs, damages, or expenses incurred or sustained by anyone resulting from any interpretation made by any of our officers, agents or employees. These interpretations are also subject to our general terms and conditions set out in our current Price Schedule.

Comments

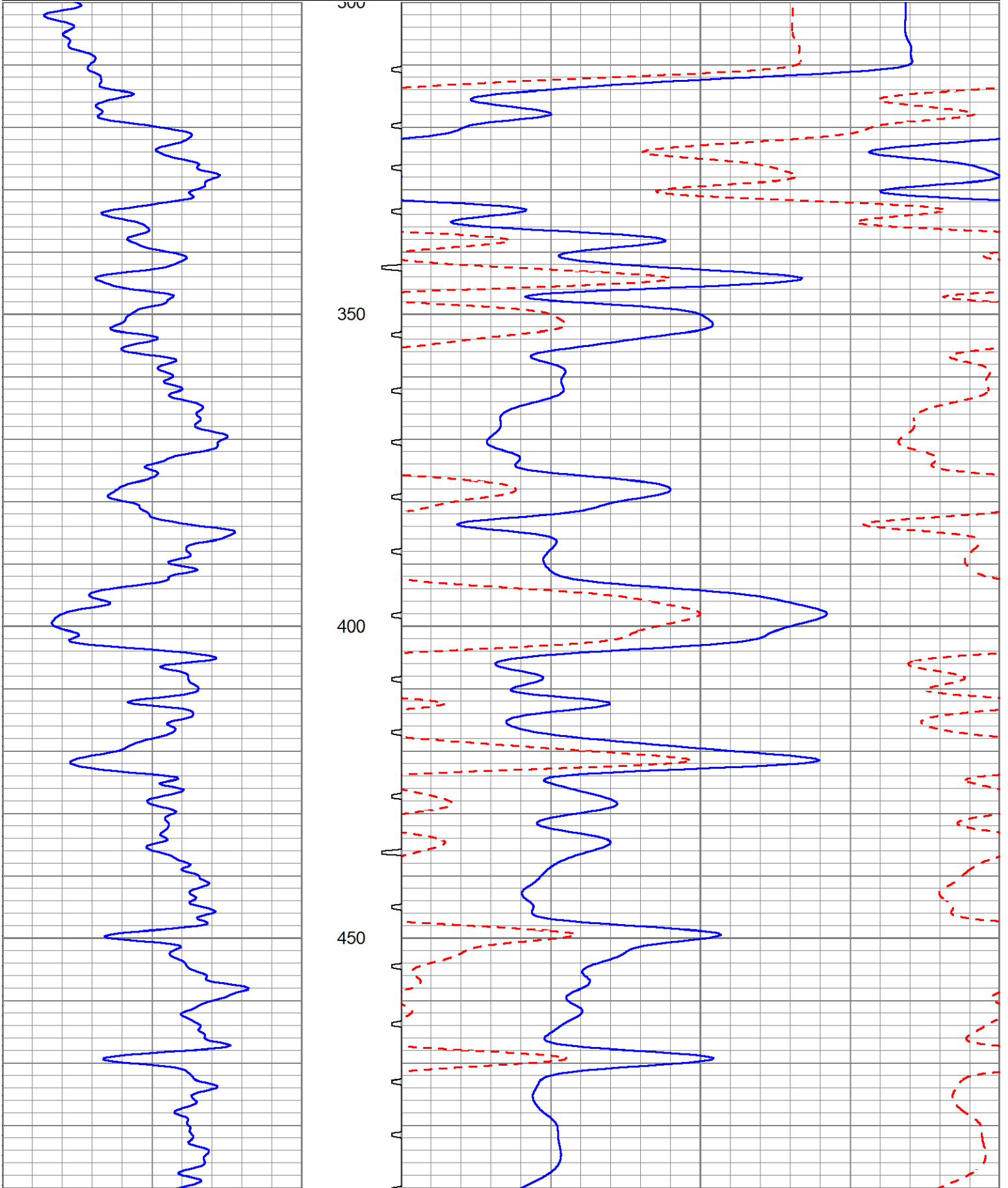
OW2-9160
CREW : C. SHAMBLES, T. LUNN

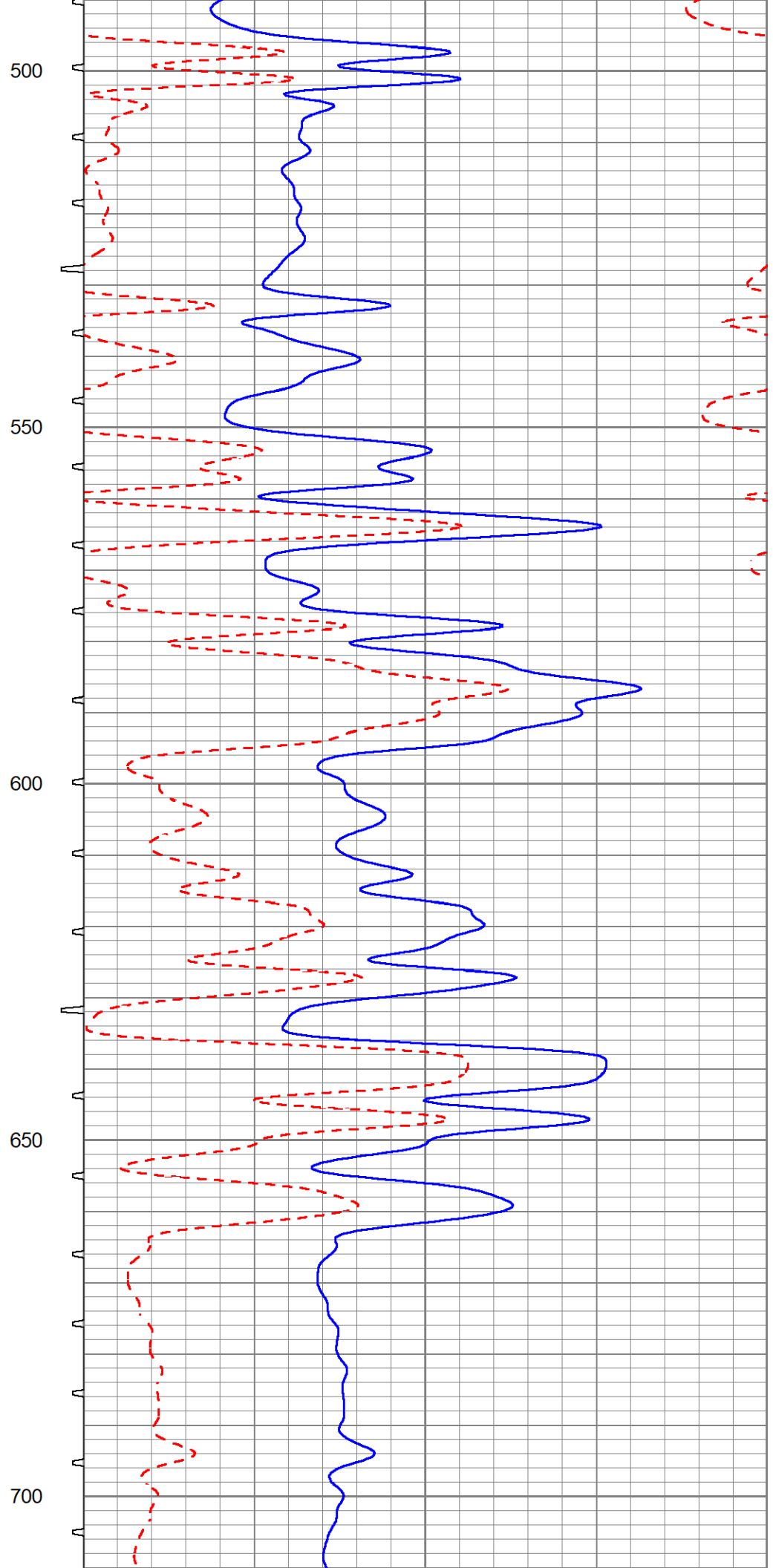
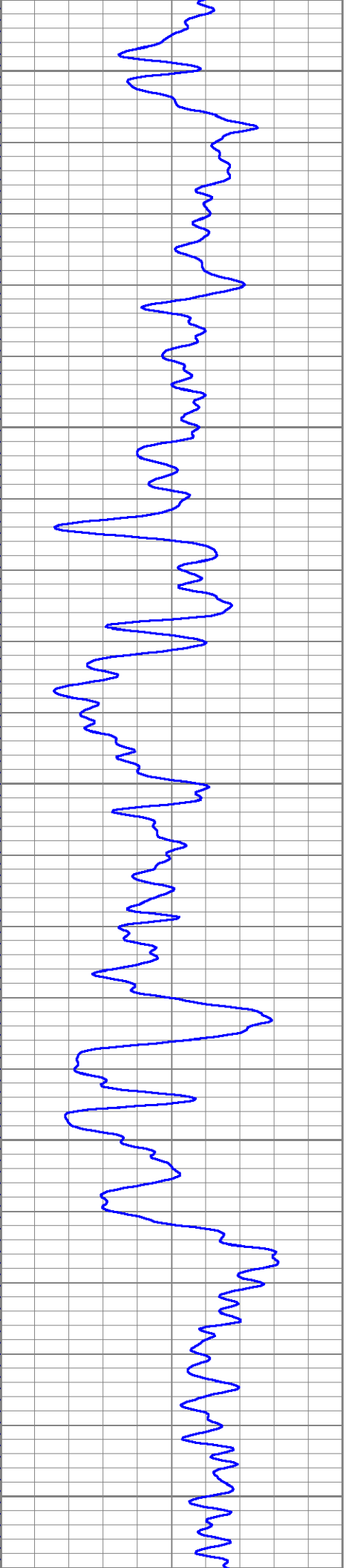


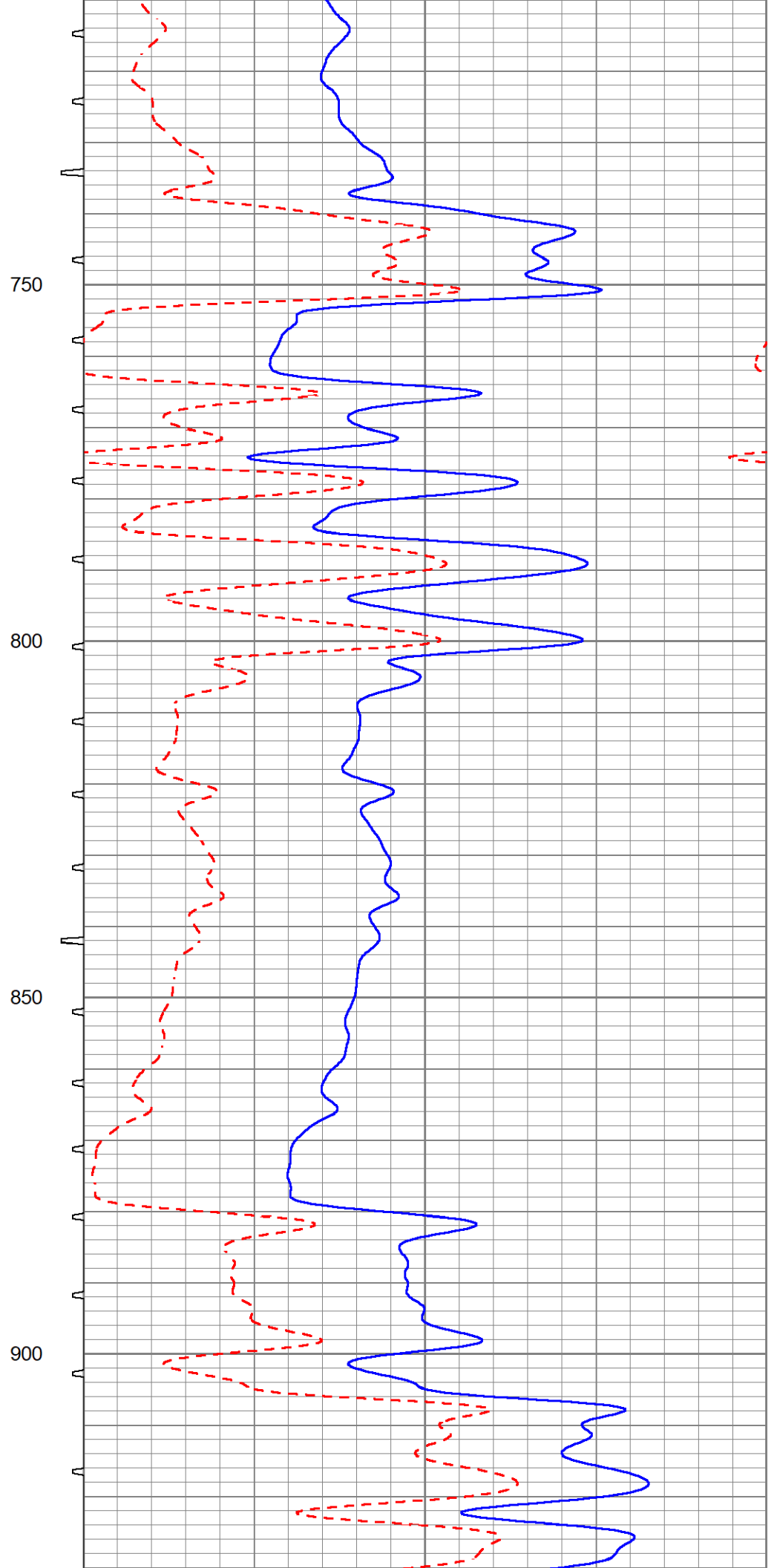
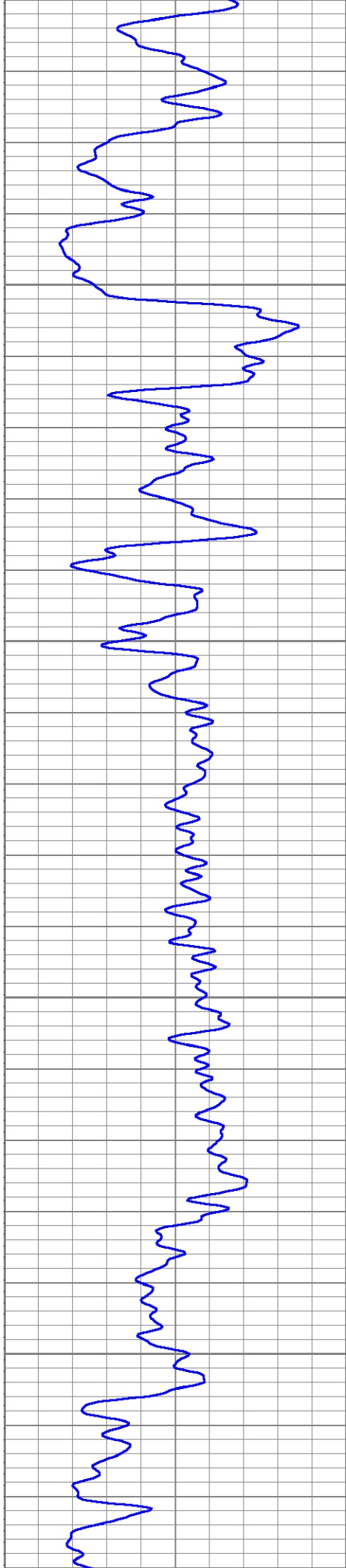
5" BHC SONIC LOG

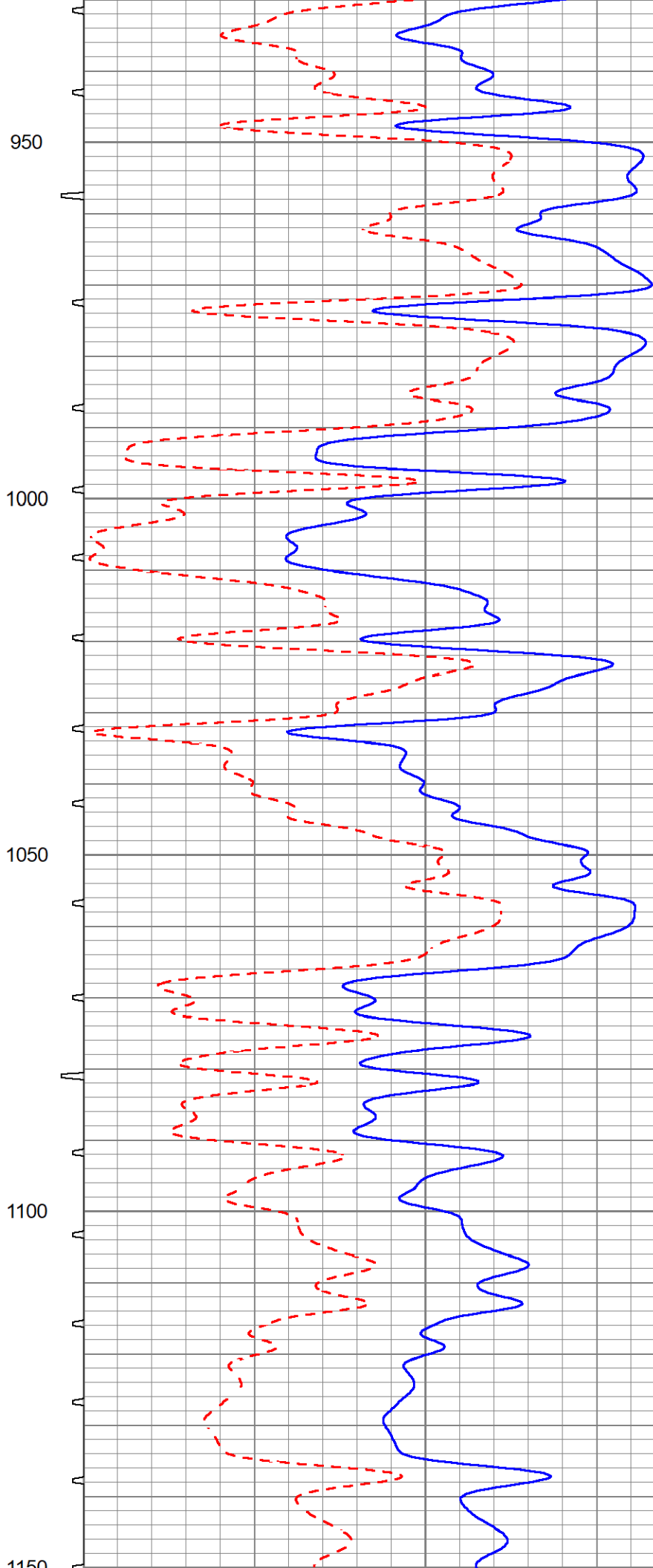
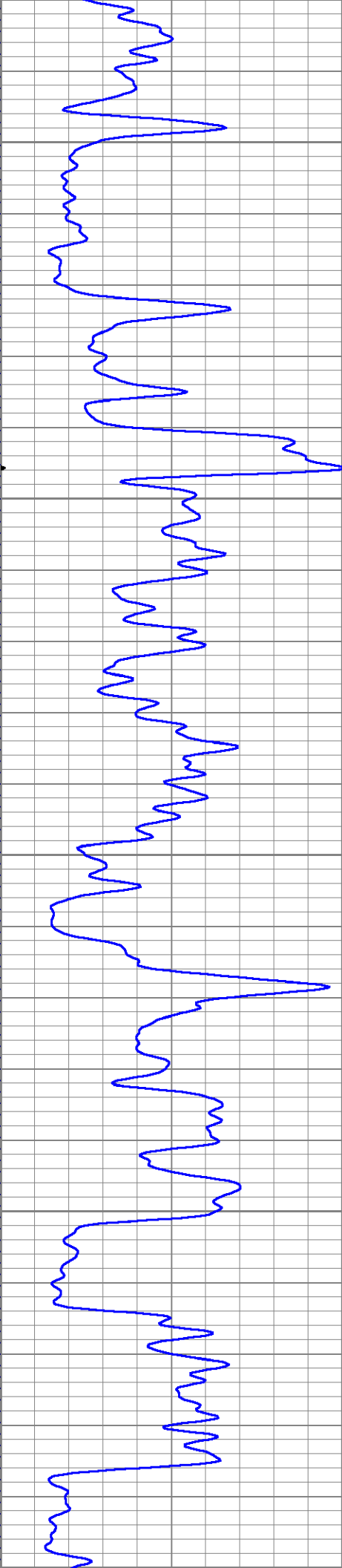
Database File ow2-9160 lawco.db
Dataset Pathname BHC/pass1
Presentation Format sonic
Dataset Creation Thu Nov 01 06:22:06 2018
Charted by Depth in Feet scaled 1:240

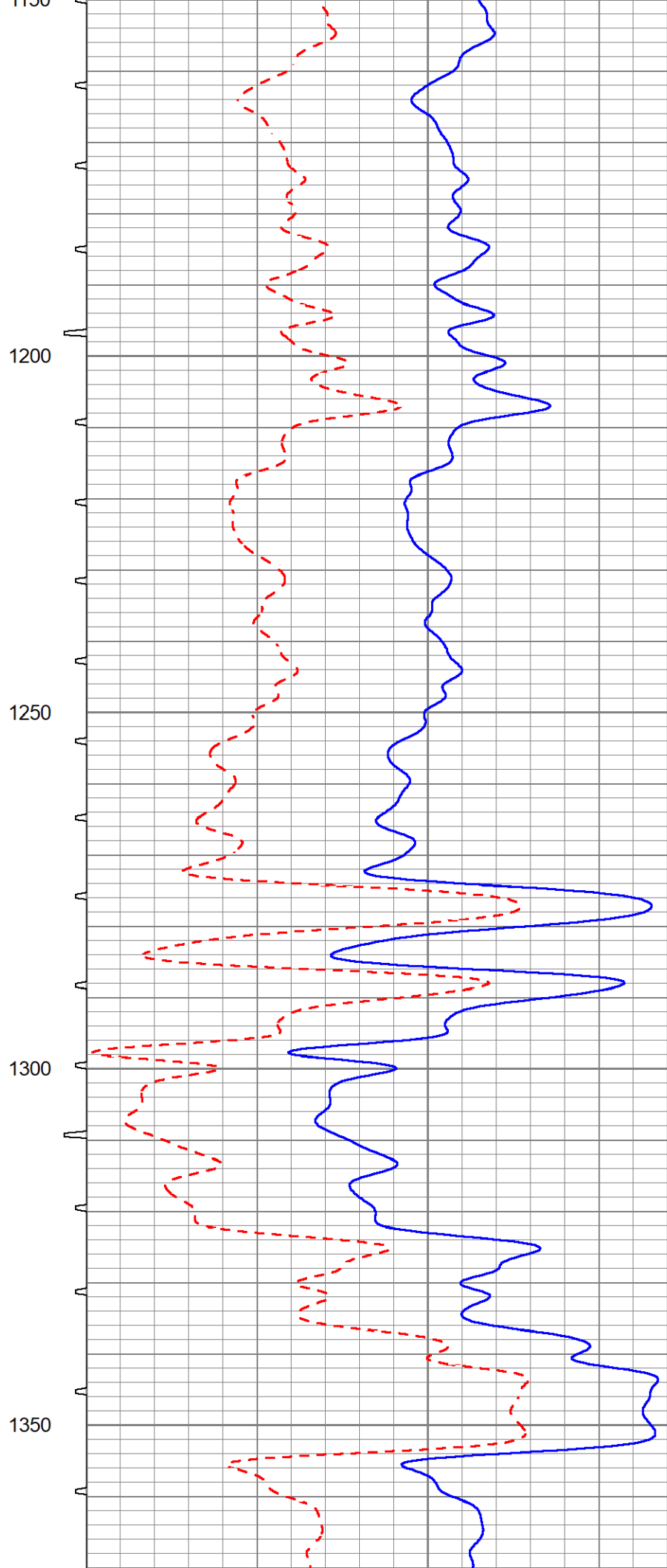
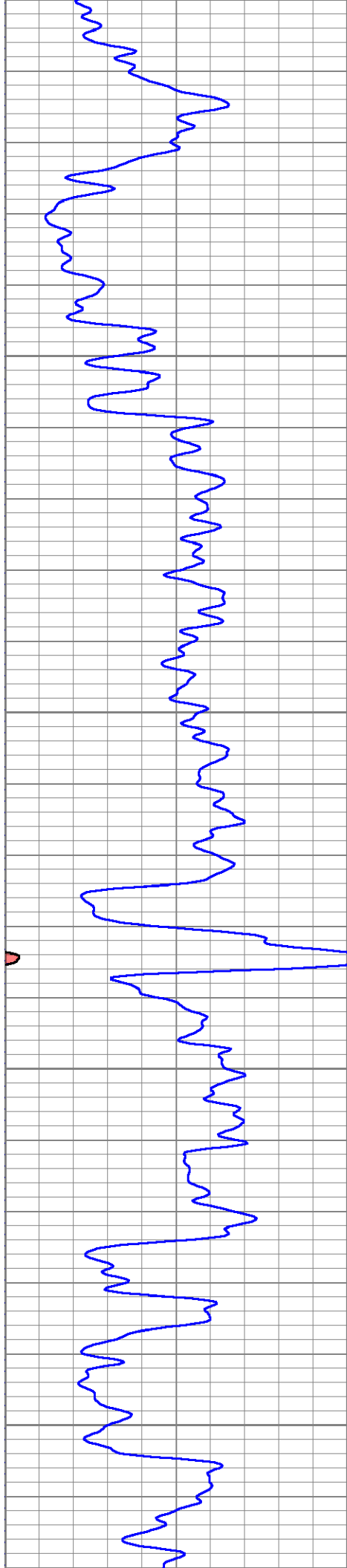
0	Gamma Ray (GAPI)	150	ITT	45	Sonic Porosity (pu)	-15
				140	Delta Time (usec/ft)	40

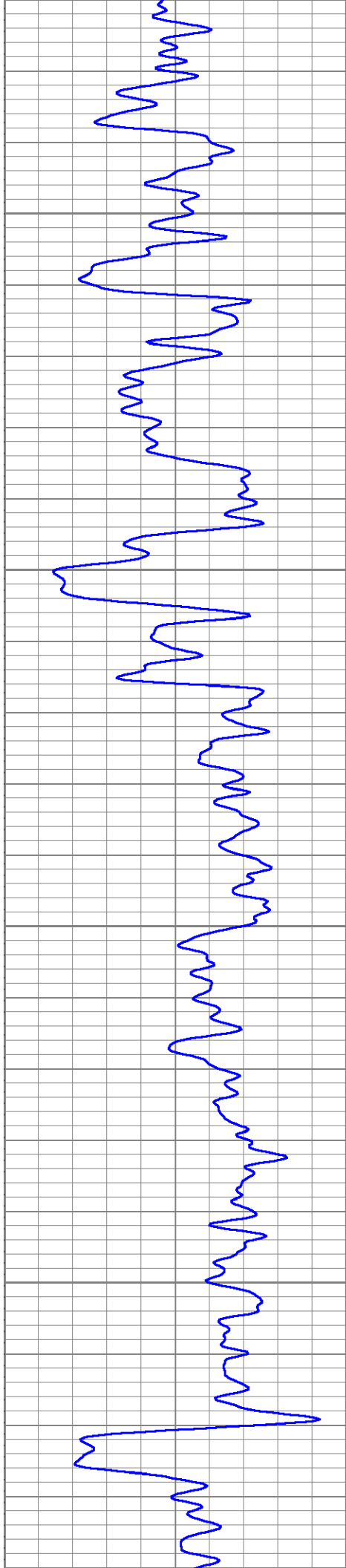










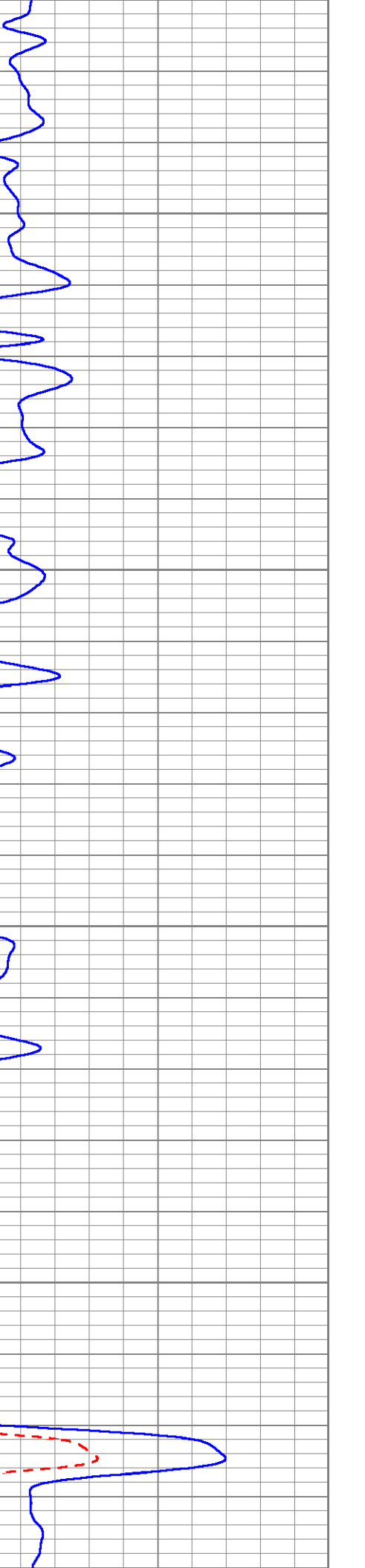
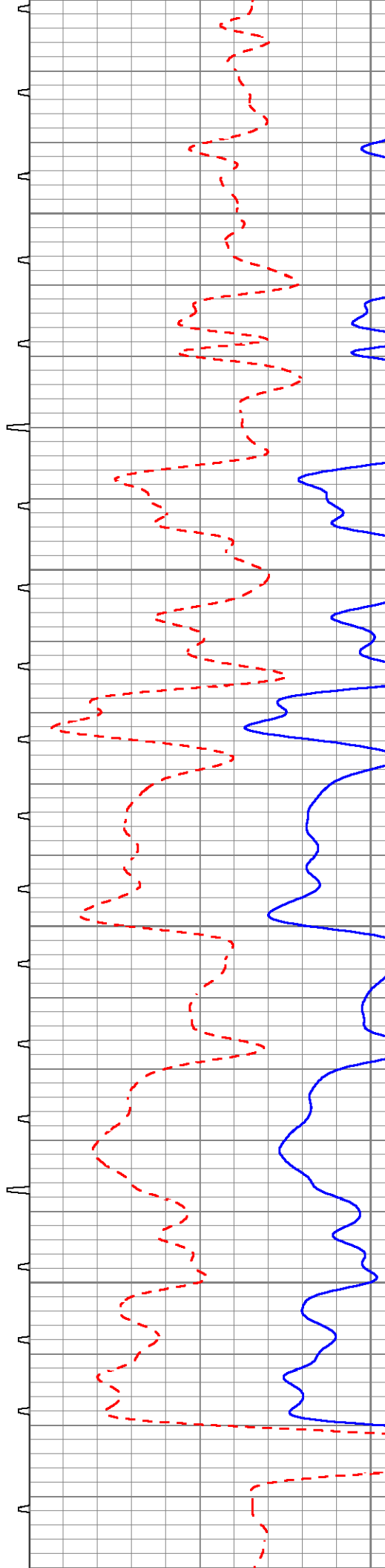


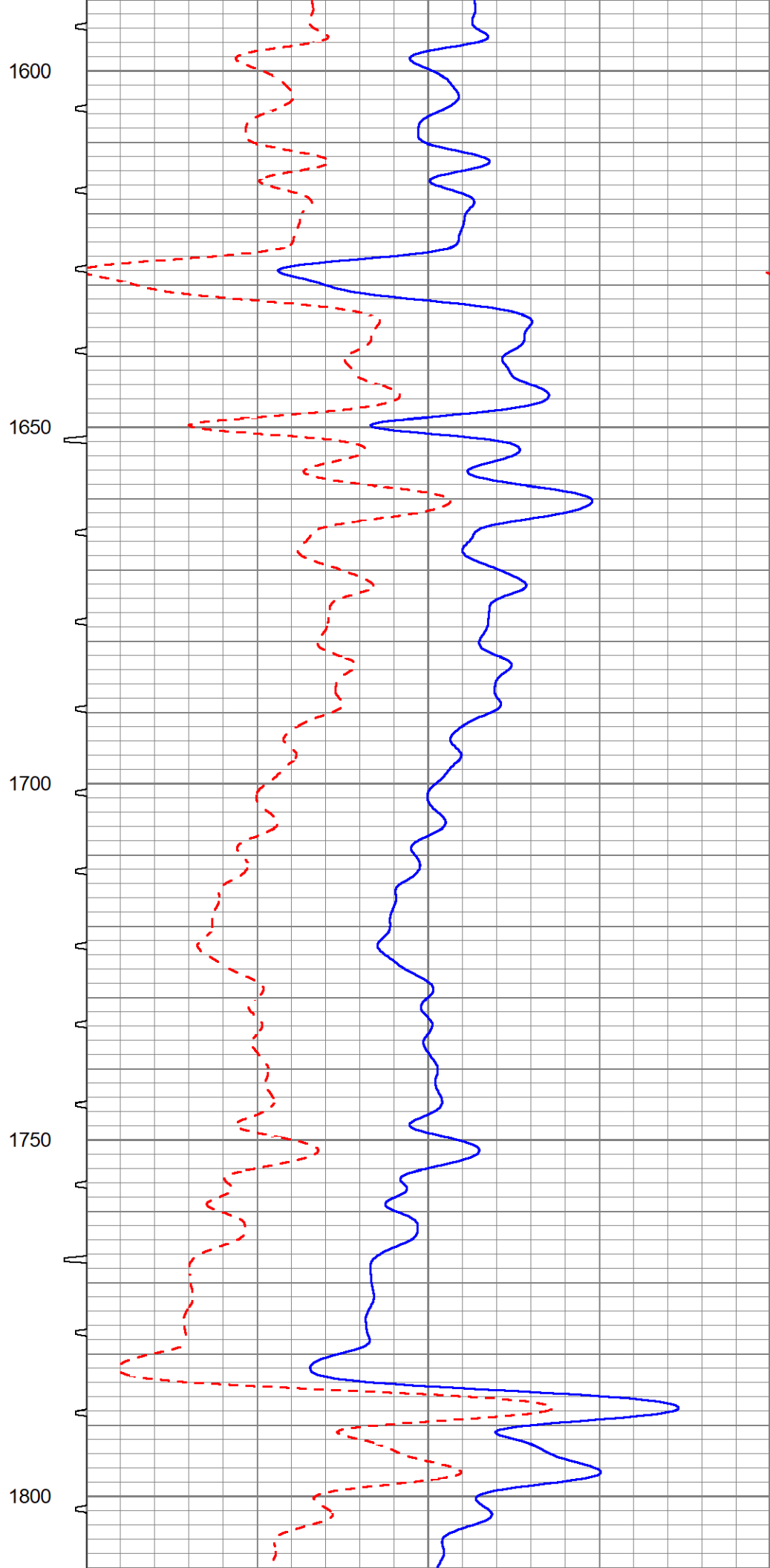
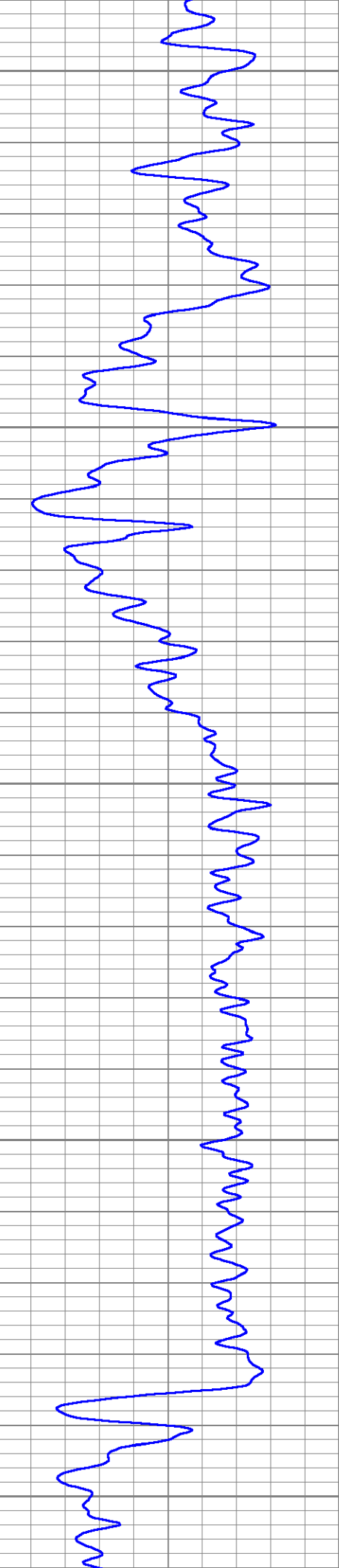
1400

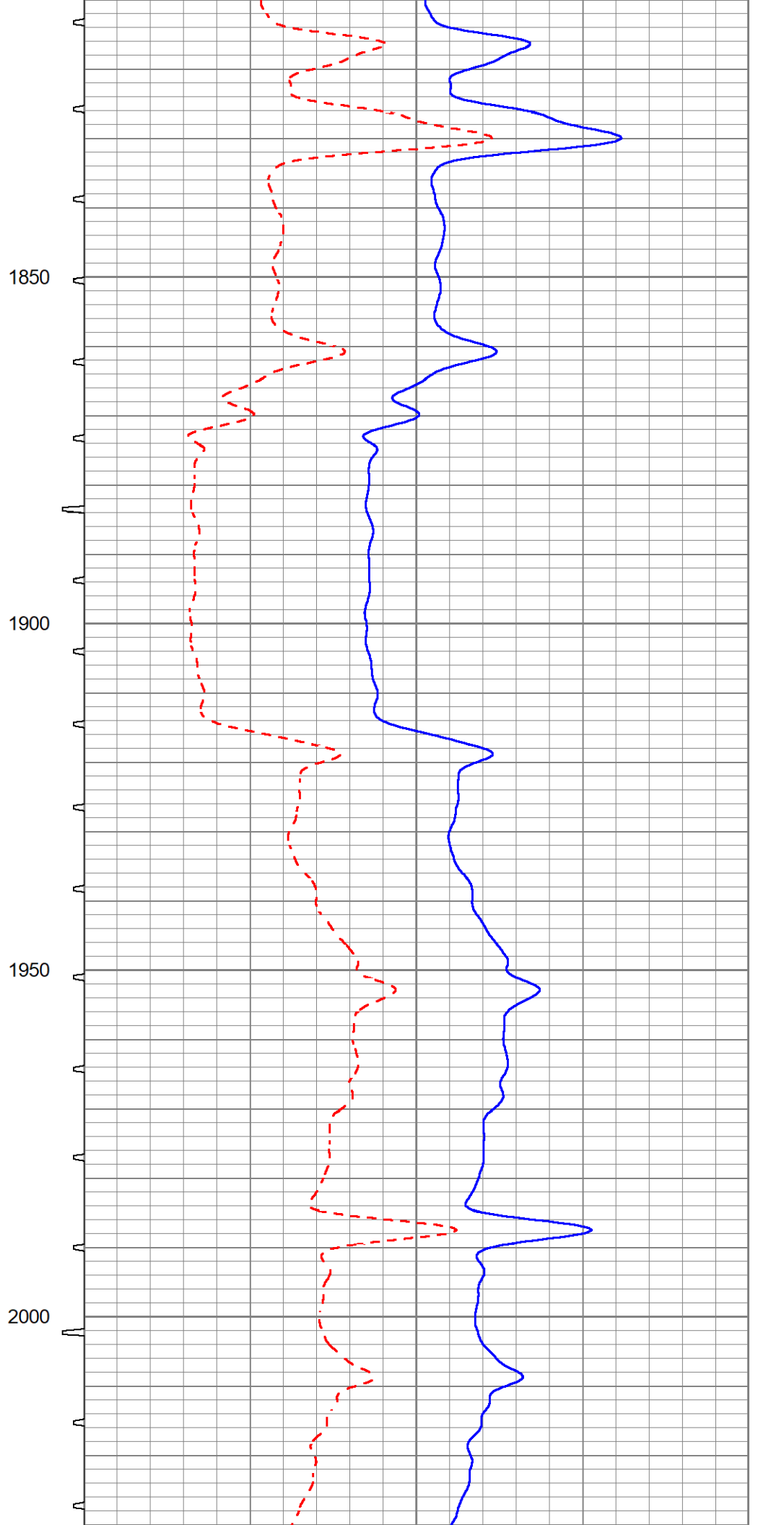
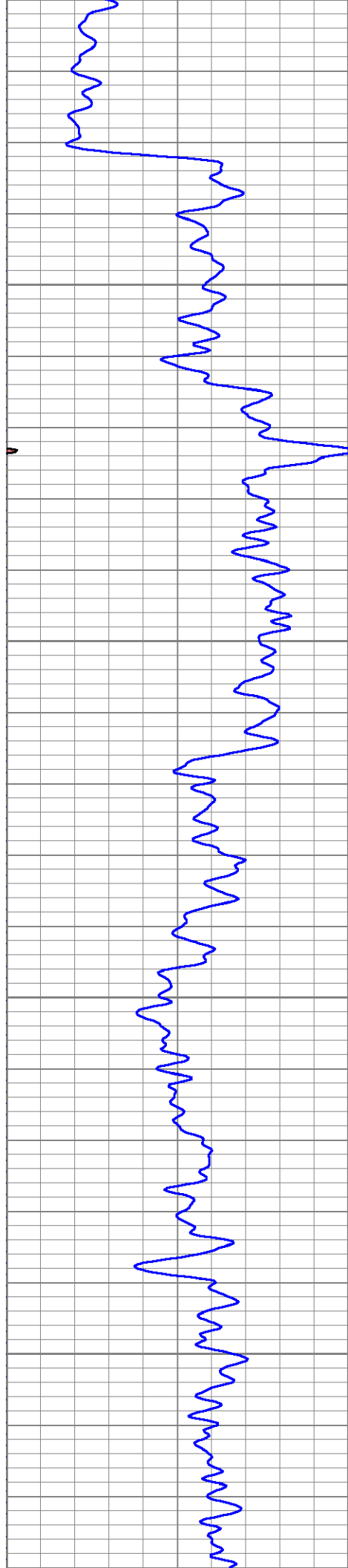
1450

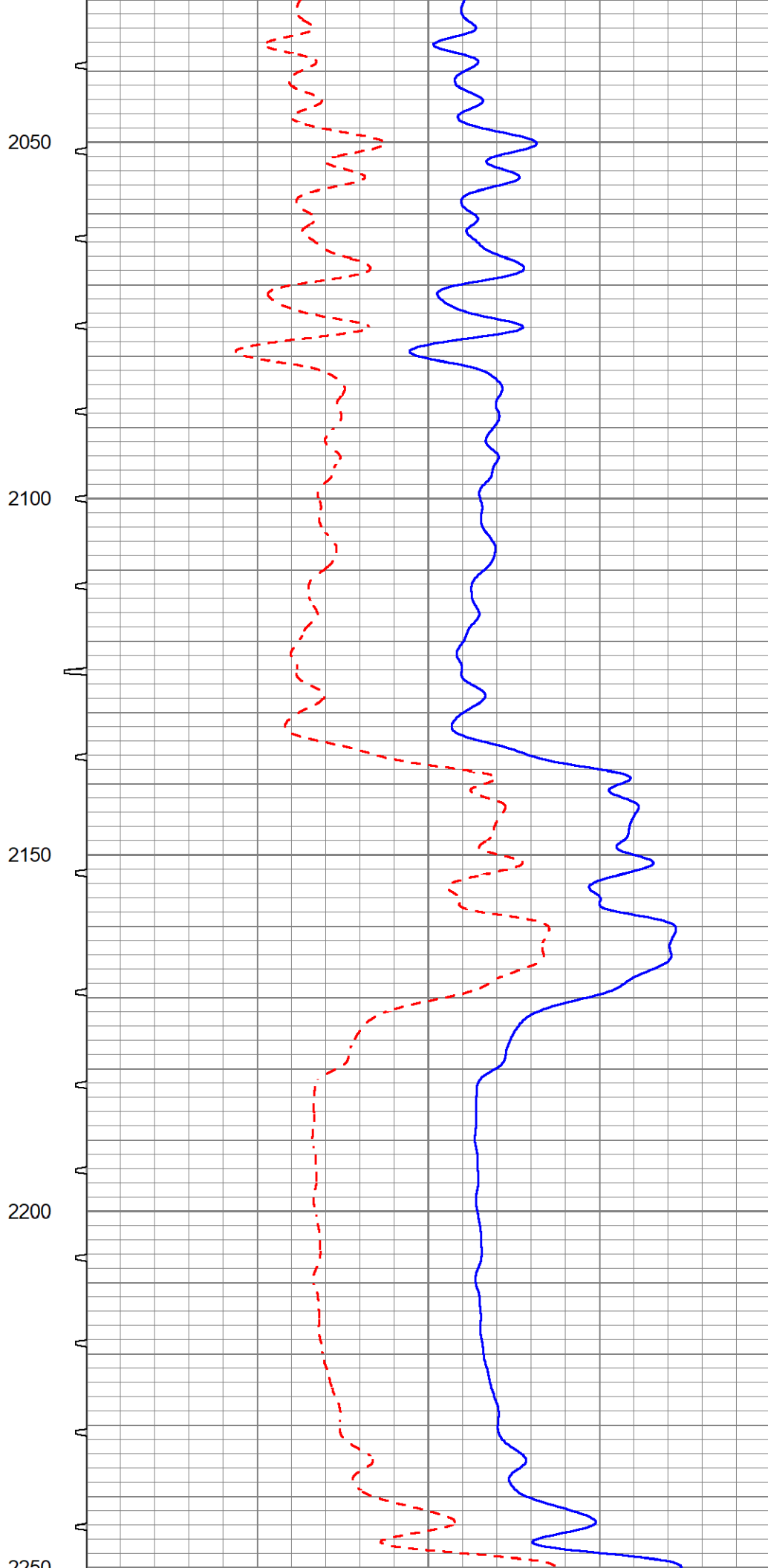
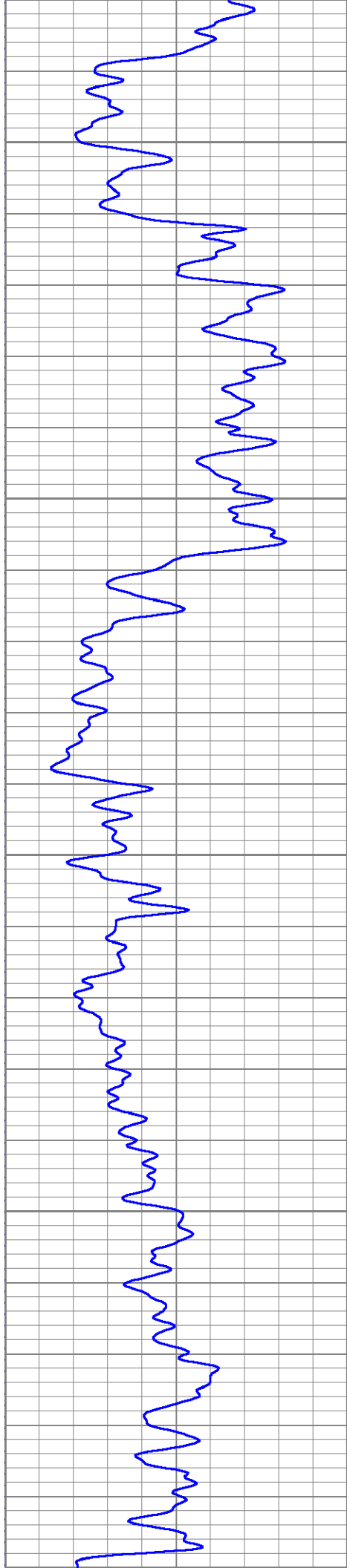
1500

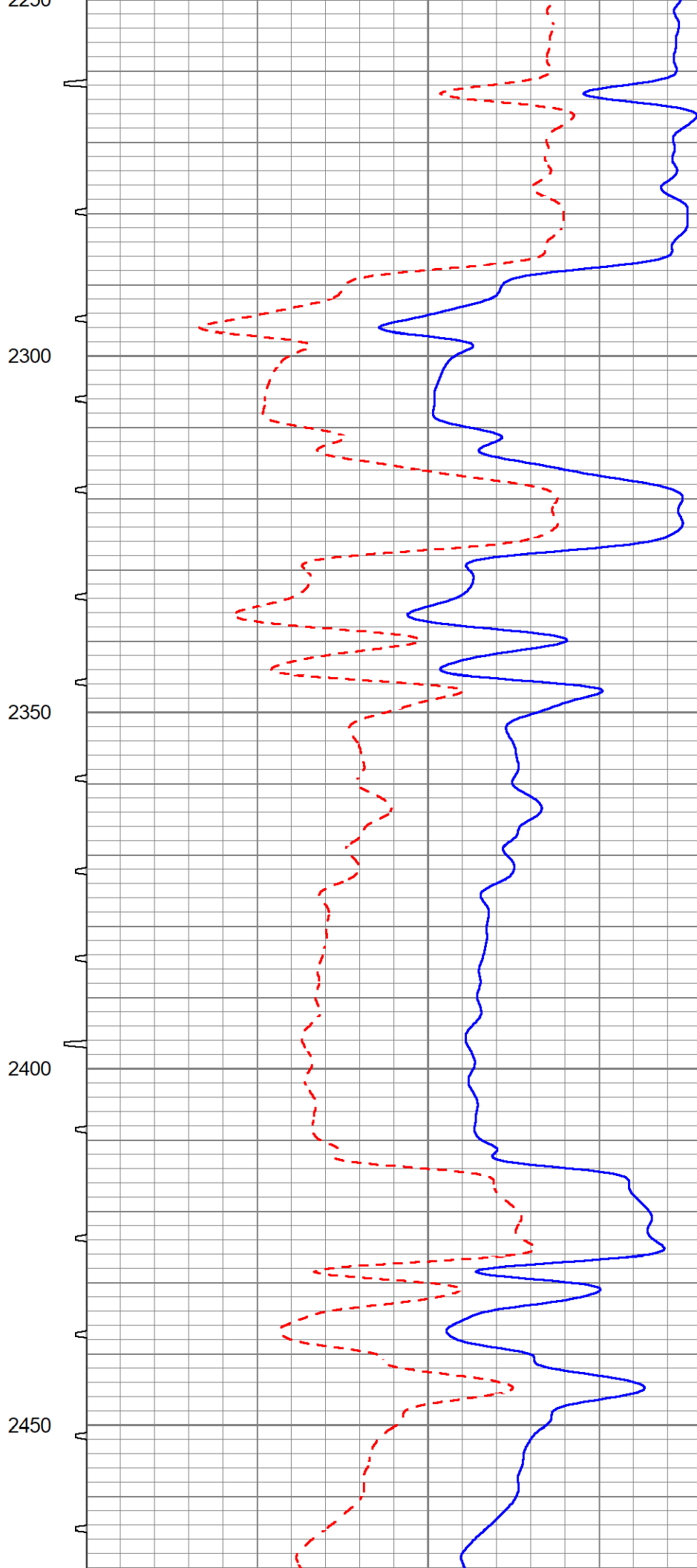
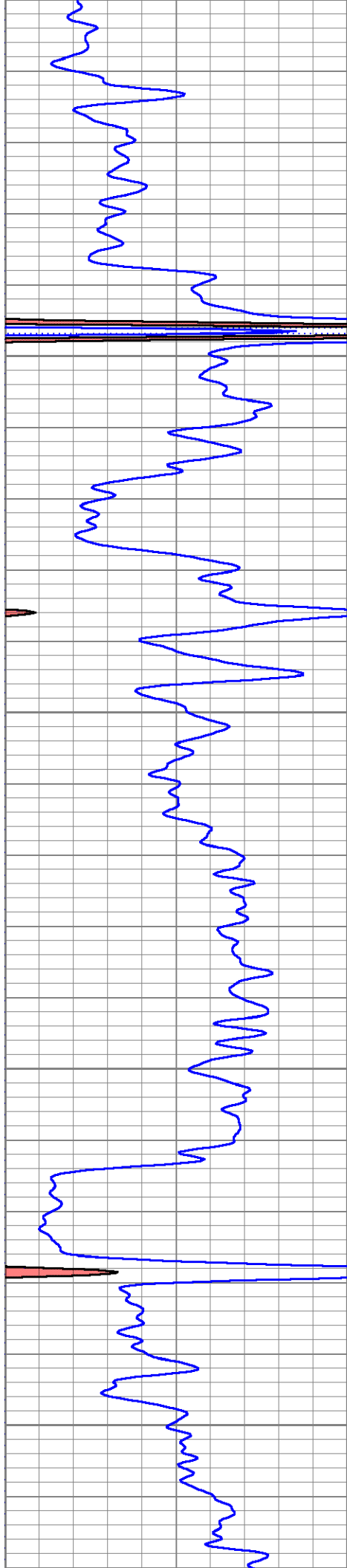
1550

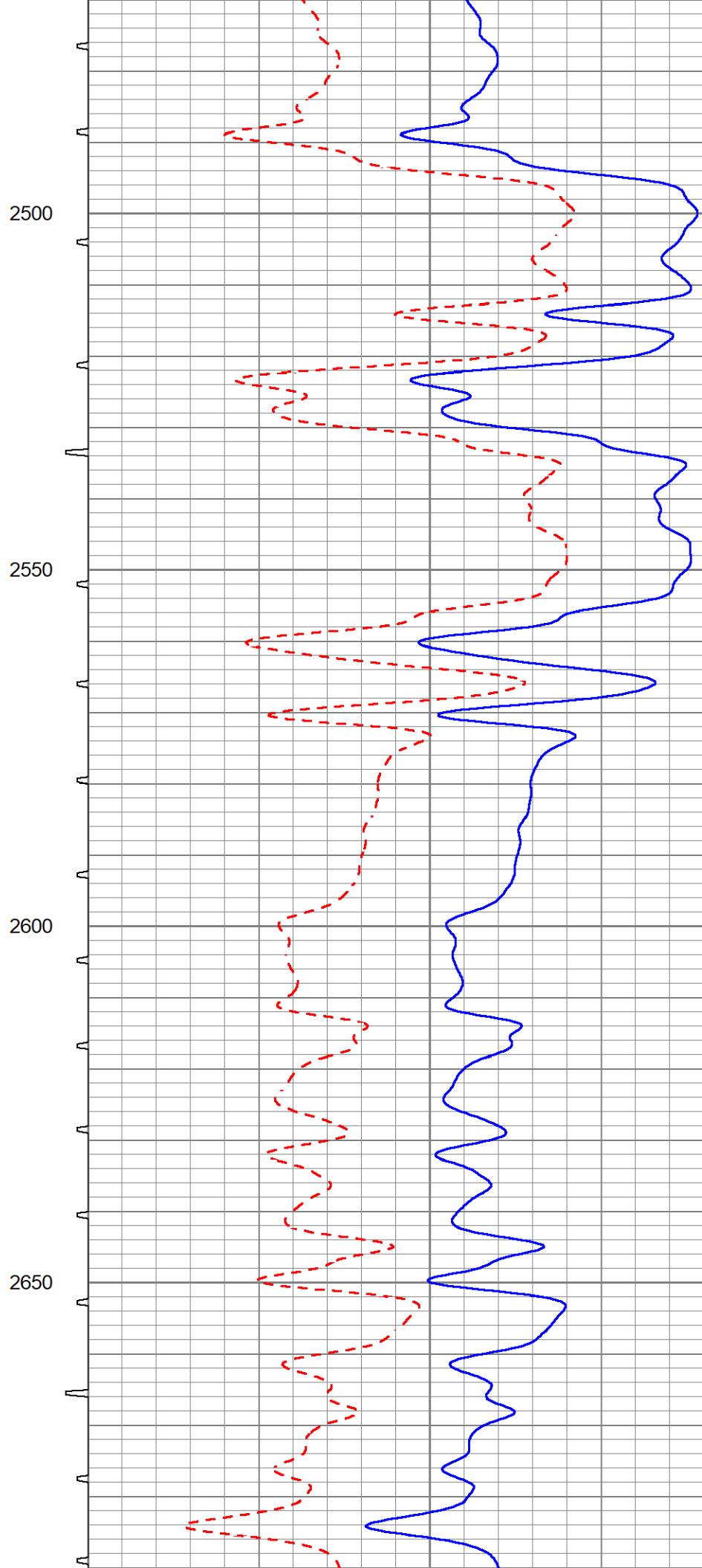
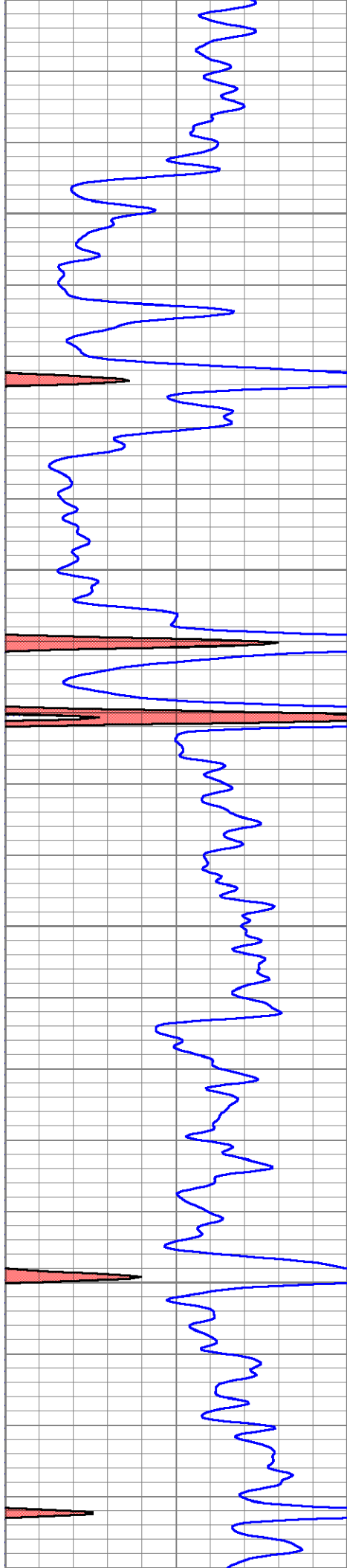


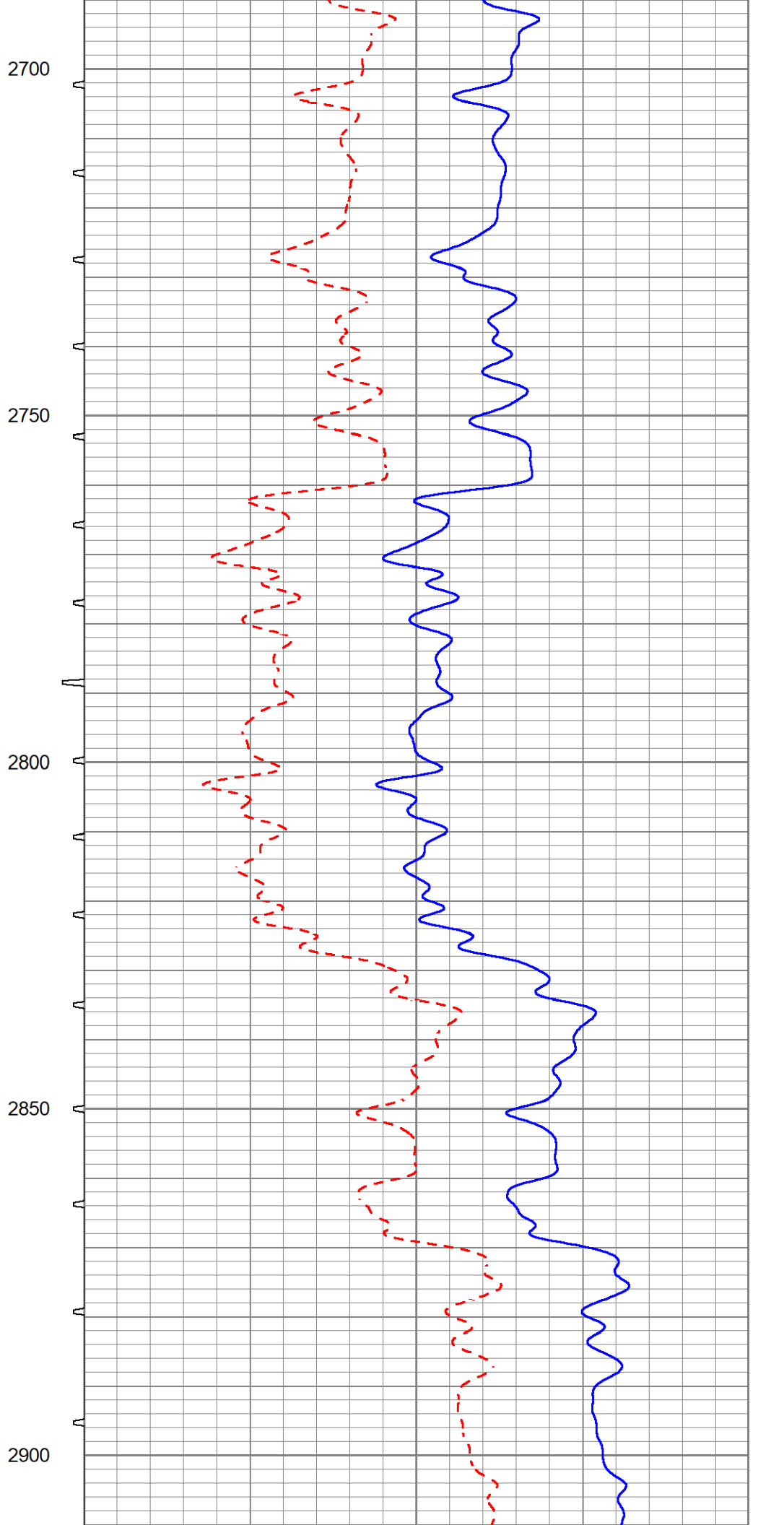
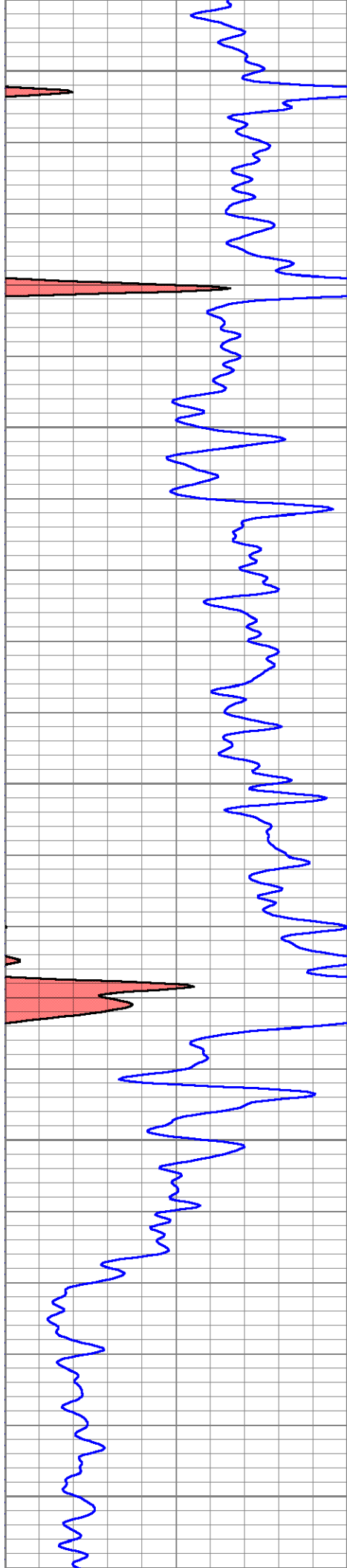


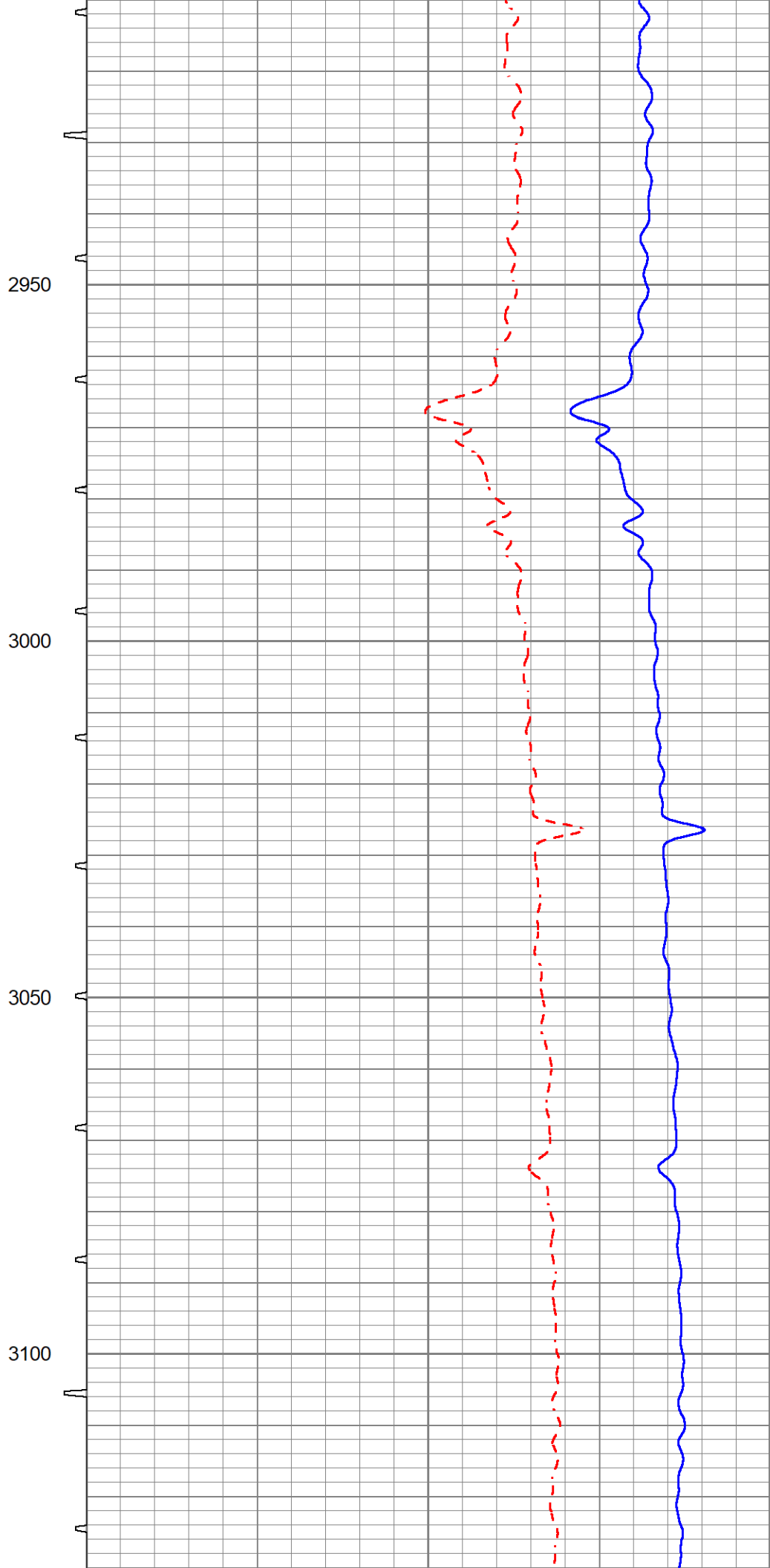
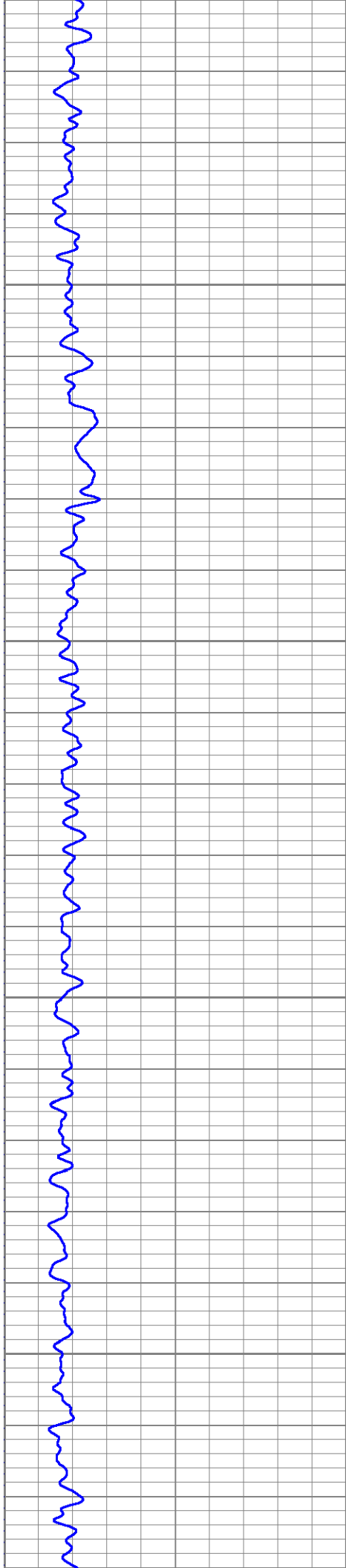


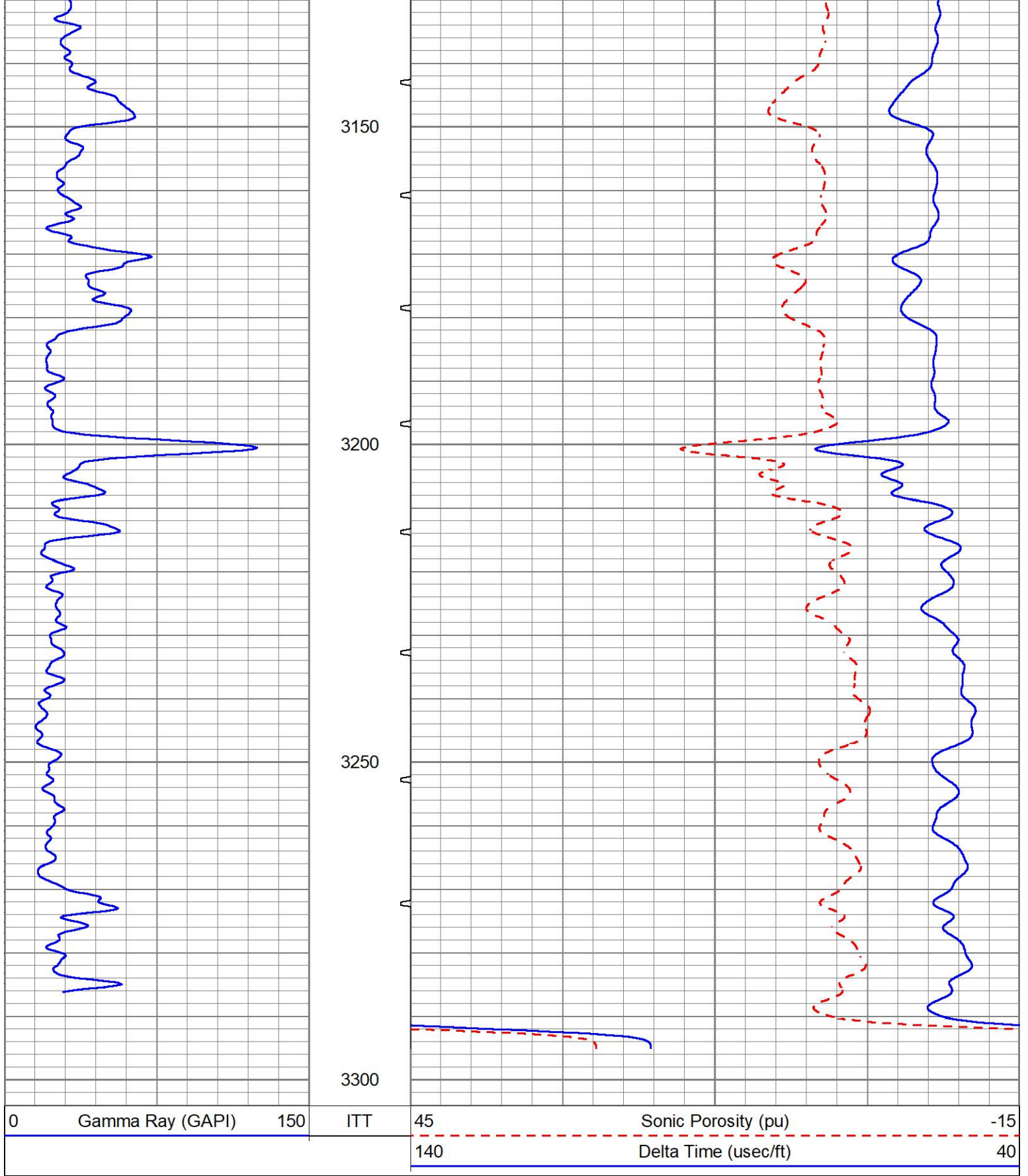













Sensor	Offset (ft)	Schematic	Description	Length (ft)	O.D. (in)	Weight (lb)
CENT TR_Mon	24.31 24.31		CENT-PROBE	4.48	3.50	20.00

WVF1	14.50		SLT-GEAR (SLT1) Probe Sonic Tool	15.83	3.50	140.00
WVF3	12.67					
WVF2	9.67					
WVF4	8.67					
CENT	4.00					

Dataset: ow2-9160 lawco.db: field/well/BHC/pass1
 Total length: 24.31 ft
 Total weight: 180.00 lb
 O.D.: 3.50 in