



COMPOSITE LOG

Company **LAWCO HOLDINGS, LLC.**
 Well **RADCLIFF # 6-5**
 Field **COUNTRYMAN**
 County **COWLEY** State **KANSAS**

Location: **SE NE NE SE**
2050' FSL & 200' FEL
SEC 5 TWP 33S RGE 7E
 API #: **15-035-24699-0000**

Permanent Datum **GL** Elevation **1314'**
 Log Measured From **GL**
 Drilling Measured From **GL**

Other Services
LDTSW, DIL, MEL SONIC
 Elevation
 K.B. ---
 D.F. ---
 G.L. **1314'**

Date	11-01-2018
Run Number	ONE
Depth Driller	3301'
Depth Logger	3303'
Bottom Logged Interval	3301'
Top Log Interval	SURFACE
Casing Driller	8 5/8" @ 317'
Casing Logger	8 5/8" @ 317'
Bit Size	7 7/8"
Type Fluid in Hole	CHEMICAL
Density / Viscosity	9.2 / 58
pH / Fluid Loss	10.5 / 8.2
Source of Sample	FLOWLINE
Rm @ Meas. Temp	2.10 @ 70
Rmt @ Meas. Temp	2.52 @ 70
Rmc @ Meas. Temp	1.68 @ 70
Source of Rmf / Rmc	CAL
Rm @ BHT	1.37 @ 107
Time Circulation Stopped	12:30 AM
Time Logger on Bottom	2:45 AM
Maximum Recorded Temperature	107
Equipment Number	OW2
Location	HOMINY, OK
Recorded By	W. LOWERY
Witnessed By	MR. MACKAY

<<< Fold Here >>>

All interpretations are opinions based on inferences from electrical or other measurements and we cannot and do not guarantee the accuracy or correctness of any interpretation, and we shall not, except in the case of gross or willful negligence on our part, be liable or responsible for any loss, costs, damages, or expenses incurred or sustained by anyone resulting from any interpretation made by any of our officers, agents or employees. These interpretations are also subject to our general terms and conditions set out in our current Price Schedule.

Comments

OW2-9160
MATRIX LIMESTONE 2.71 G/CC
ABHV COMPUTED WITH 5 1/2" CASING

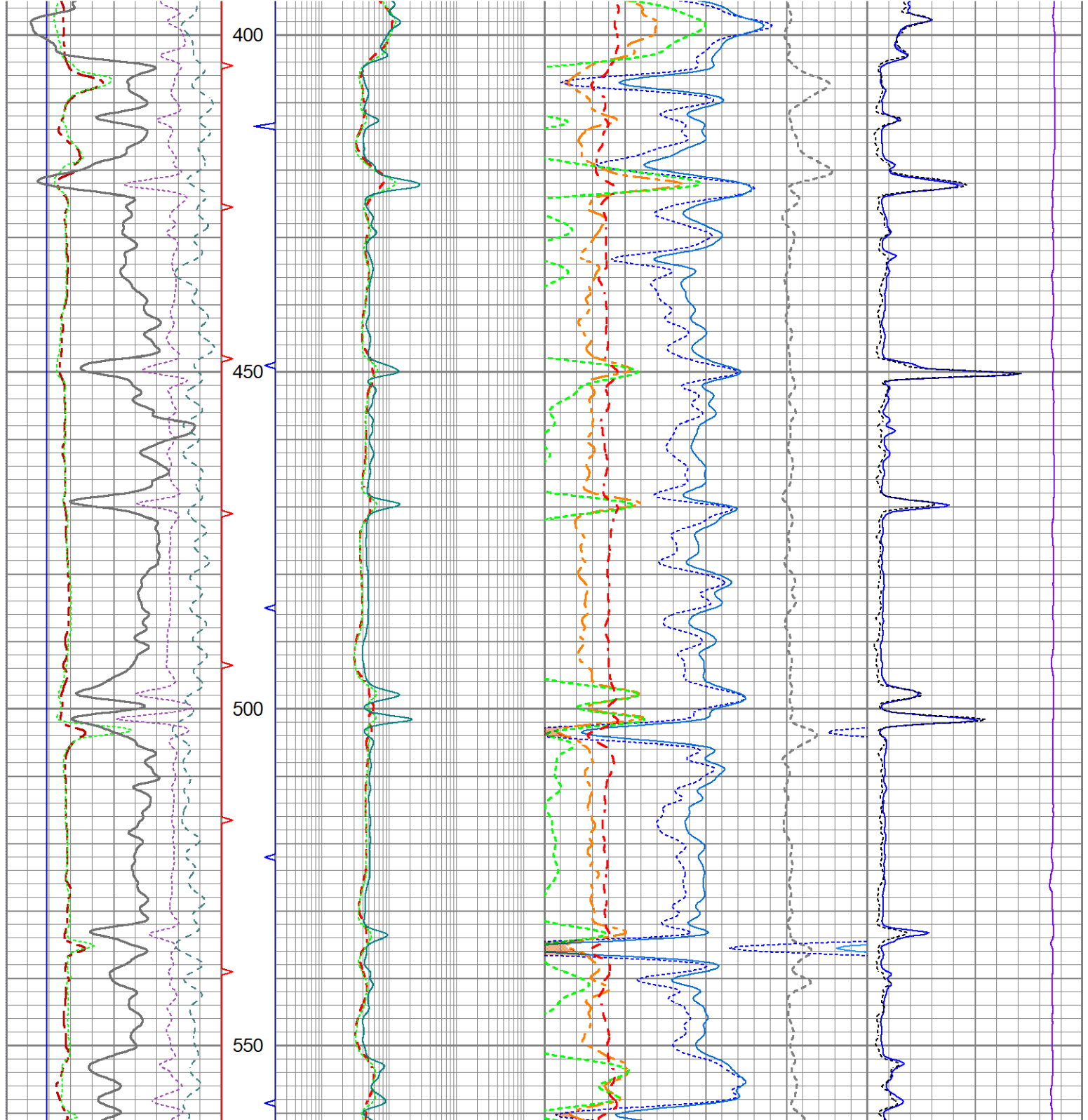
CREW : C. SHAMBLES, T. LUNN

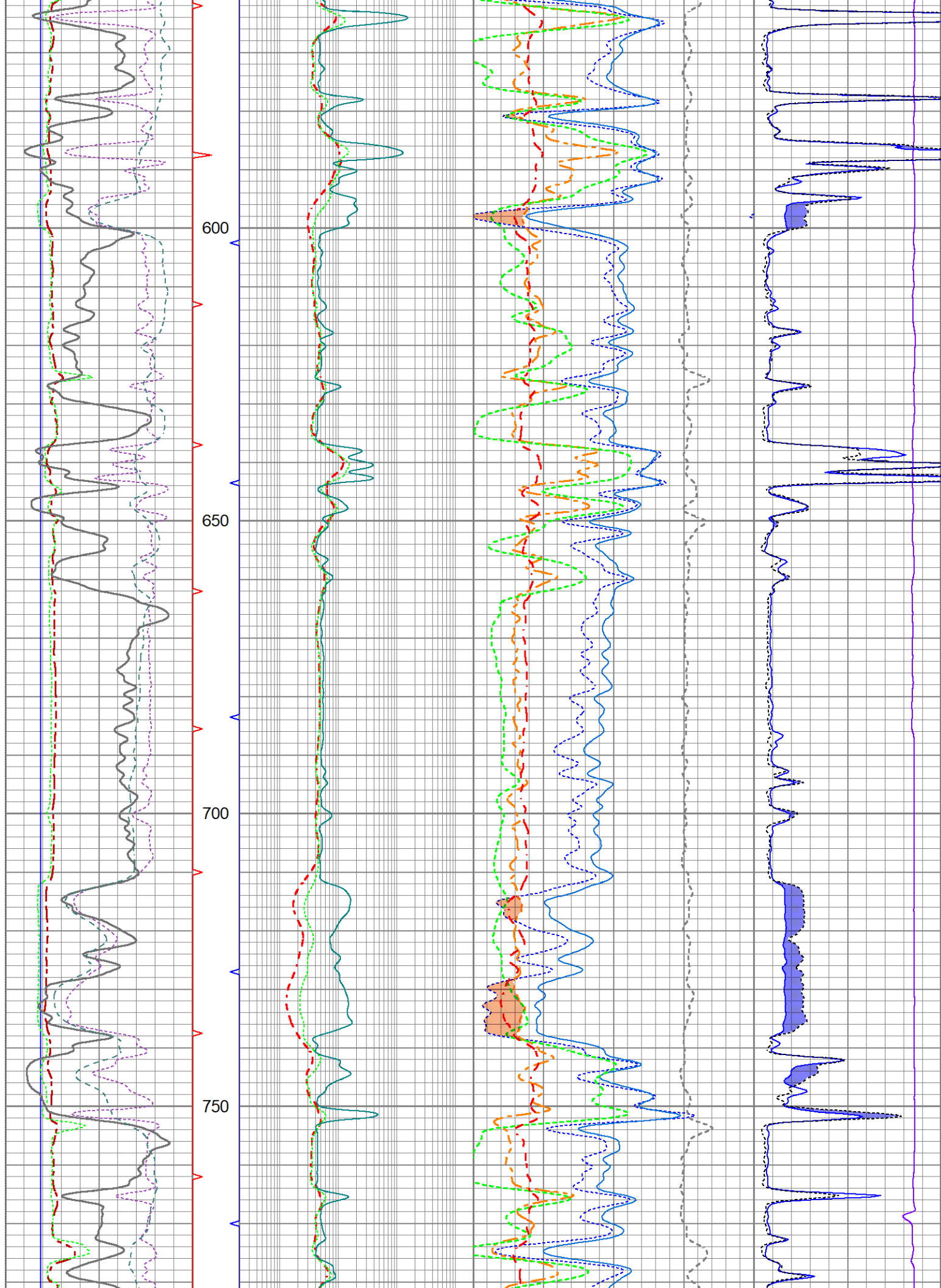


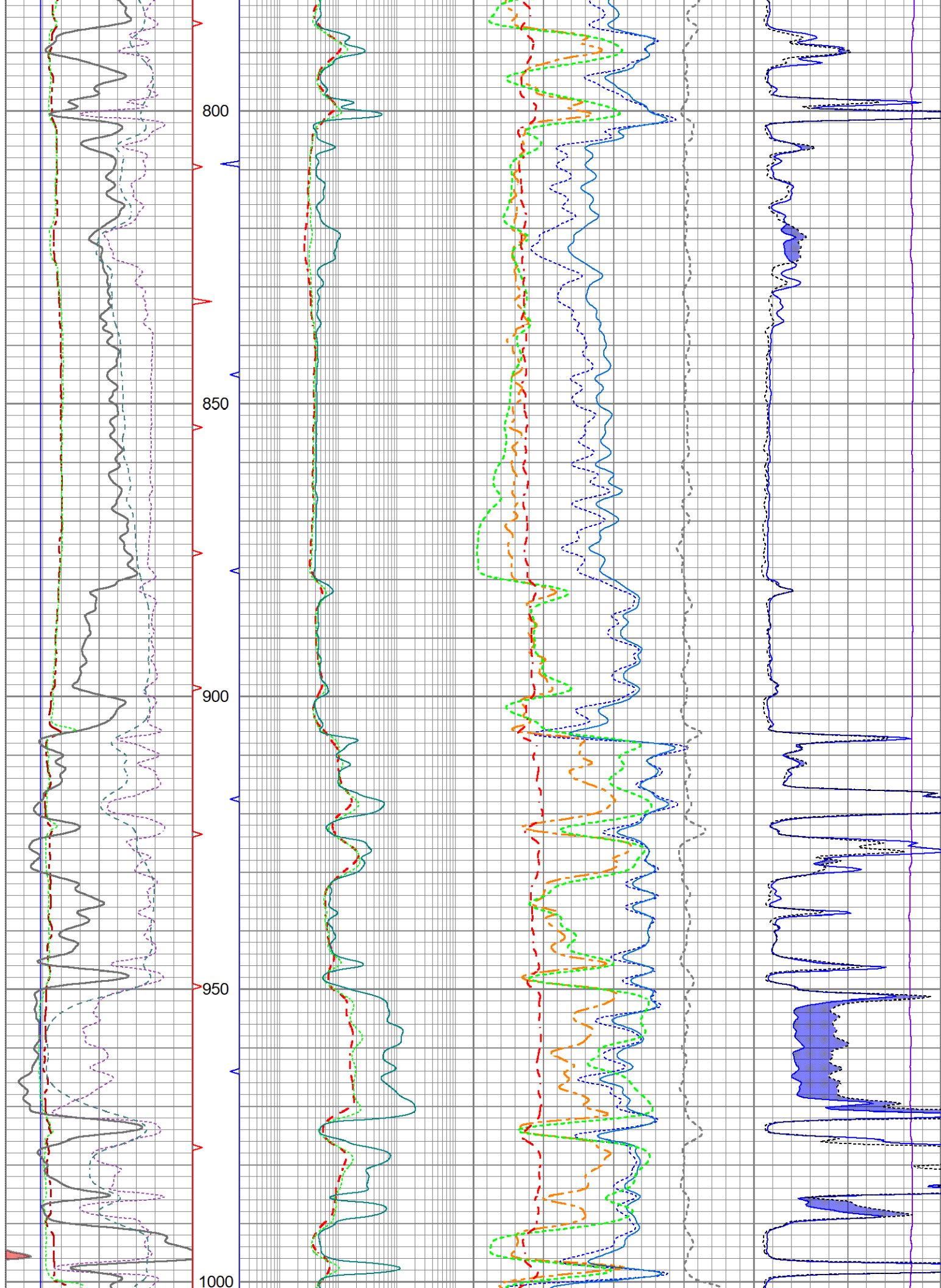
Quick Look Presentation

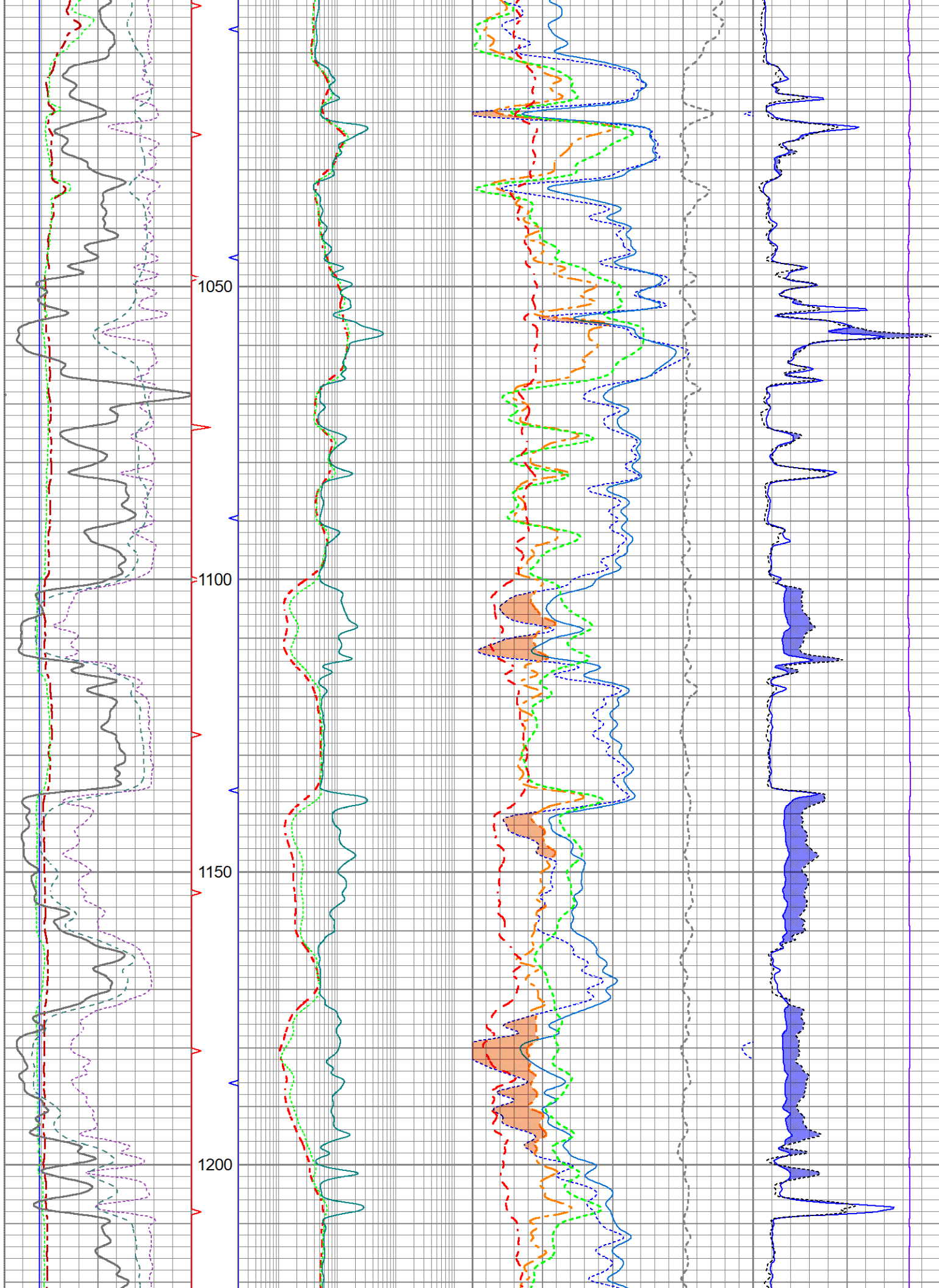
Database File ow2-9160 lawco.db
 Dataset Pathname LDTDILM/merge3
 Presentation Format lawcomp
 Dataset Creation Thu Nov 01 07:24:56 2018
 Charted by Depth in Feet scaled 1:240

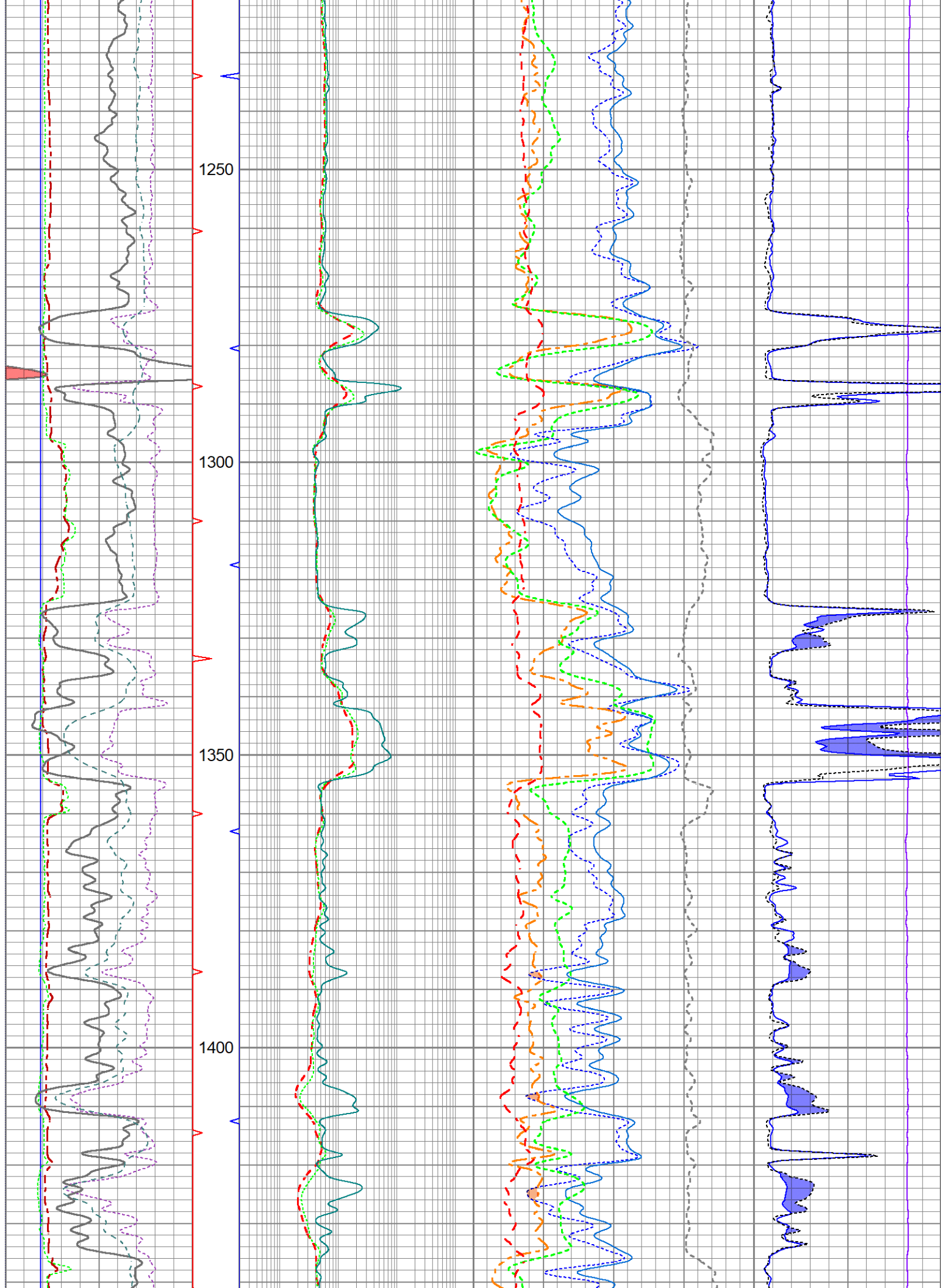
6	Bit Size (in)	16	TBHV	0.2	Resistivity (Ohm-m)	2000	30	Density Porosity (pu)	-10	500	Line Tension (lb)	0	
6	Density Caliper (in)	16		0.2	Medium (Ohm-m)	2000	30	Neutron Porosity (pu)	-10		Micro Inverse		
6	MCAL (in)	16	ABHV	0.2	Lateral Log (Ohm-m)	2000	2	Bulk Density (g/cc)	3	0	(Ohm-m)	40	
-160	Rxo\Rt	40					45	Sonic Porosity (pu)	-15		Micro Normal		
	Gamma Ray						0	Pe	10	Correction	0	(Ohm-m)	40
0	(GAPI)	150							-0.5	(g/cc)	0.5		
0	SP (mV)	200											

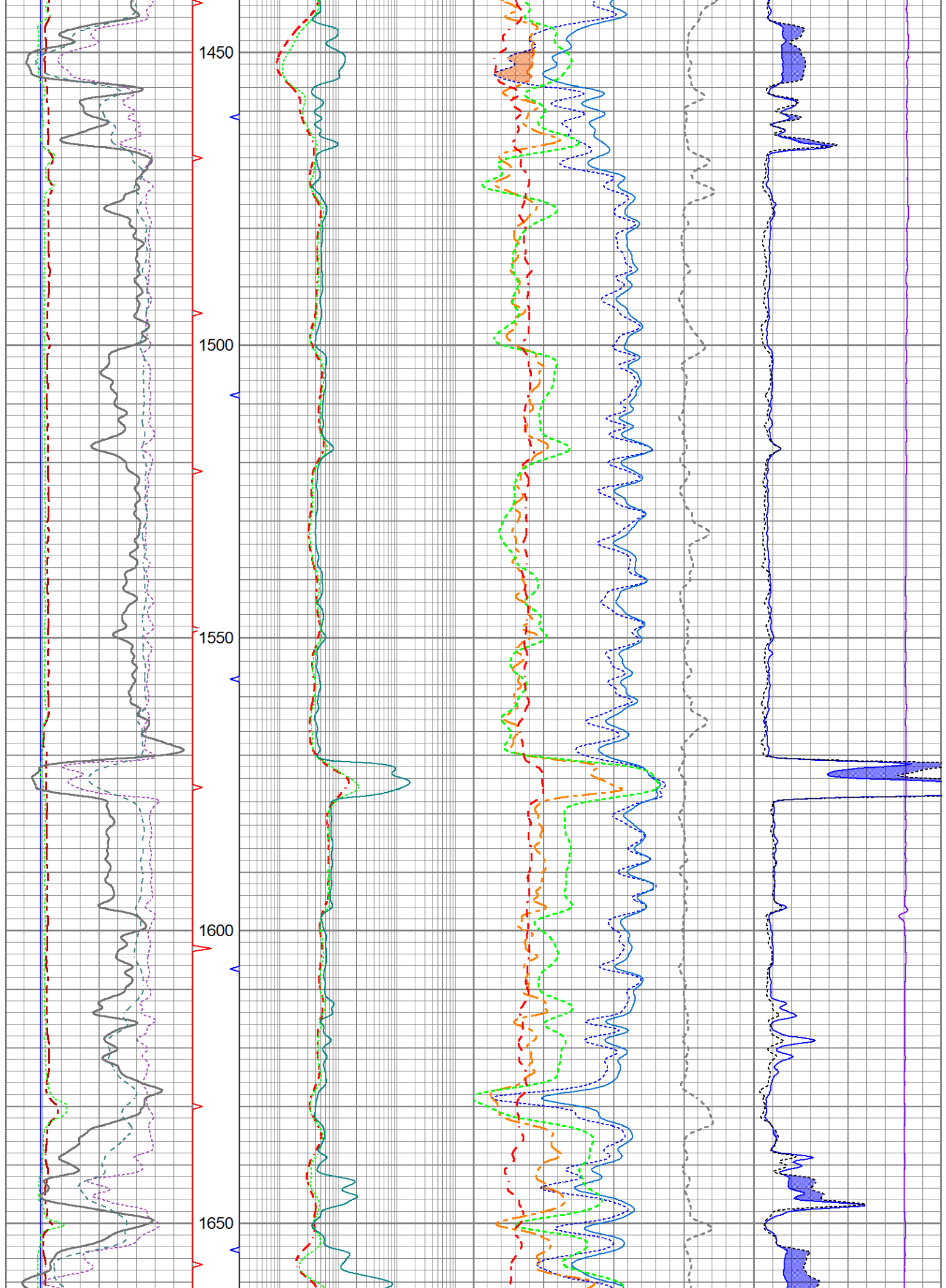


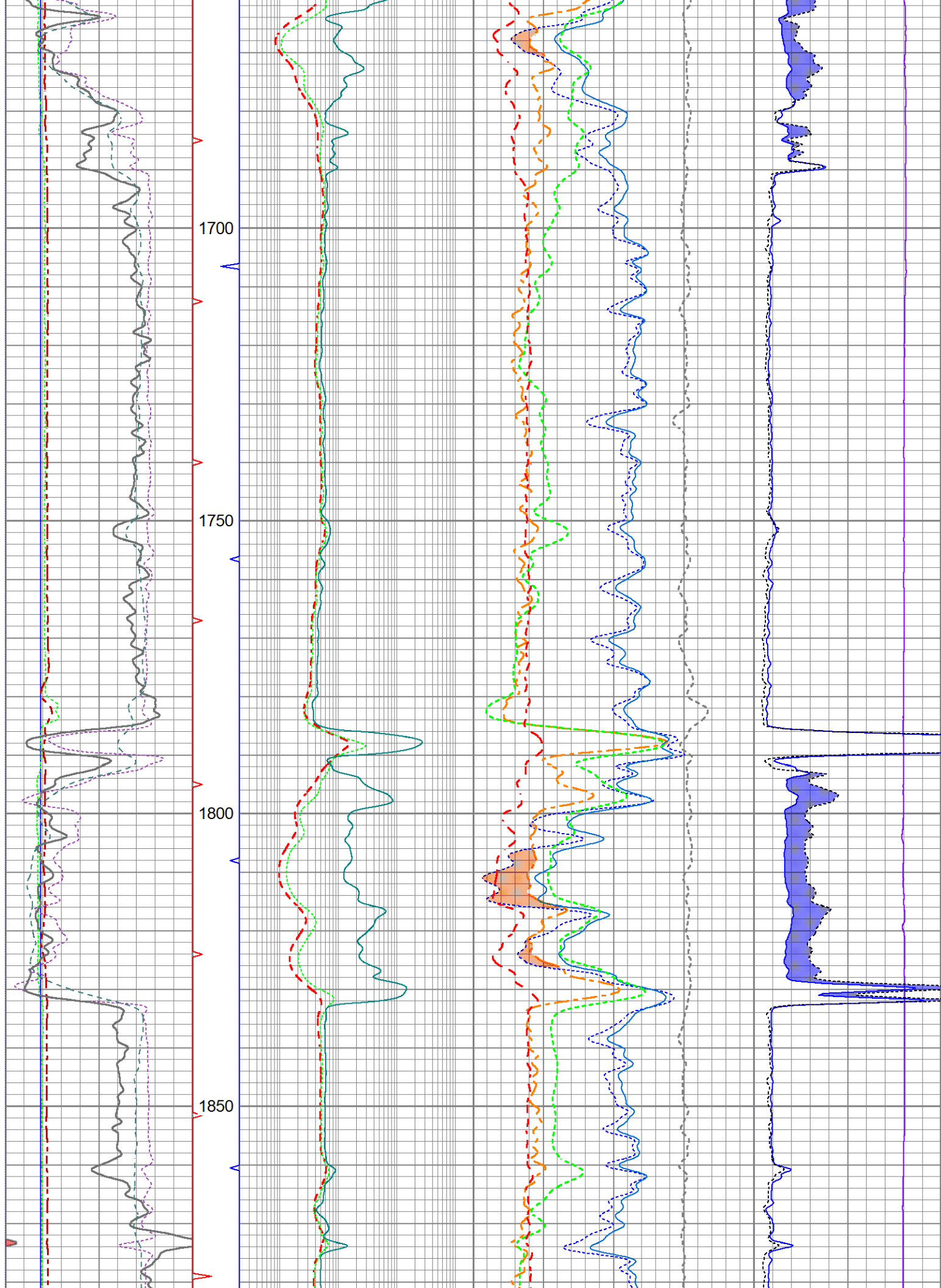


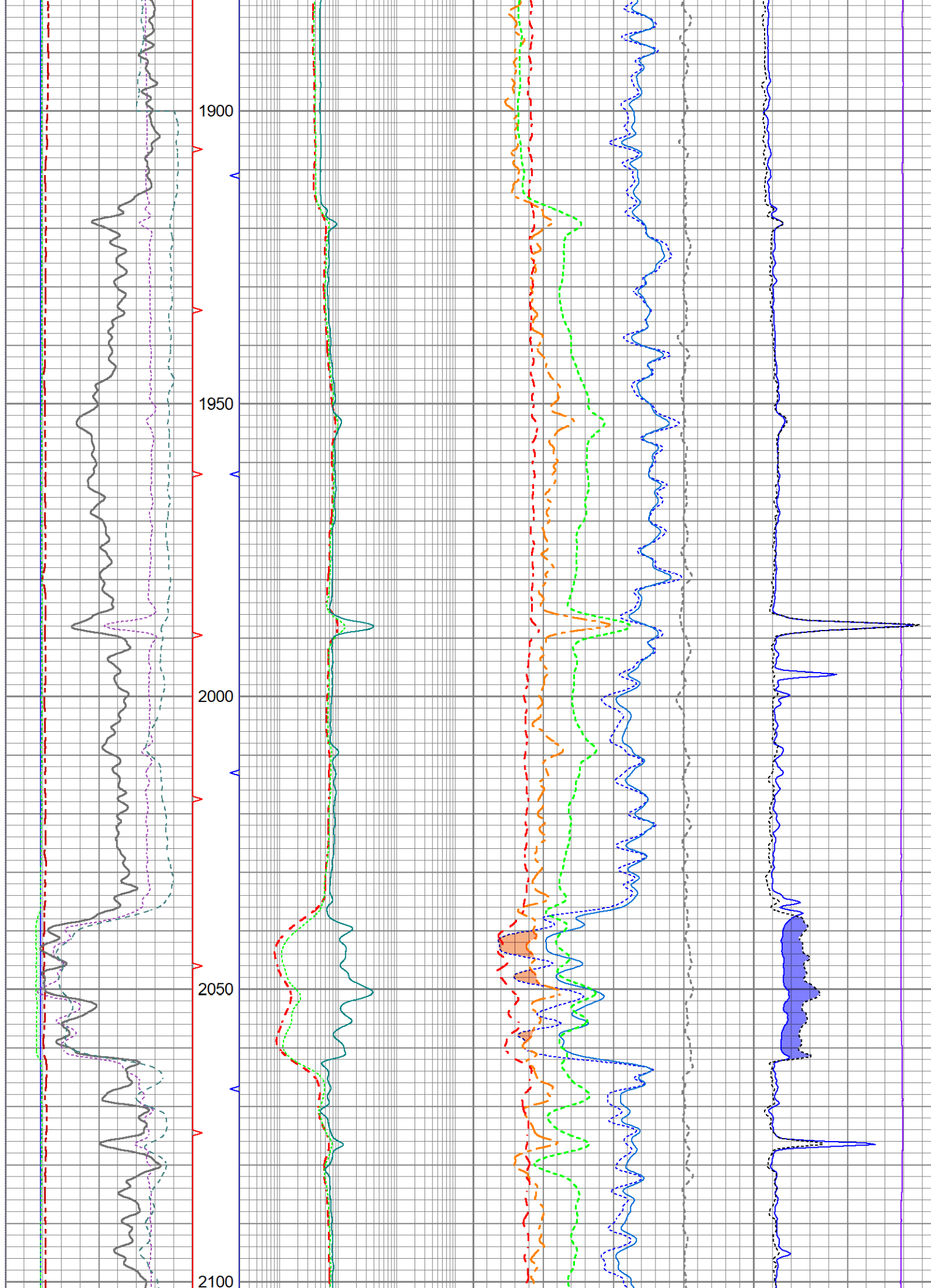


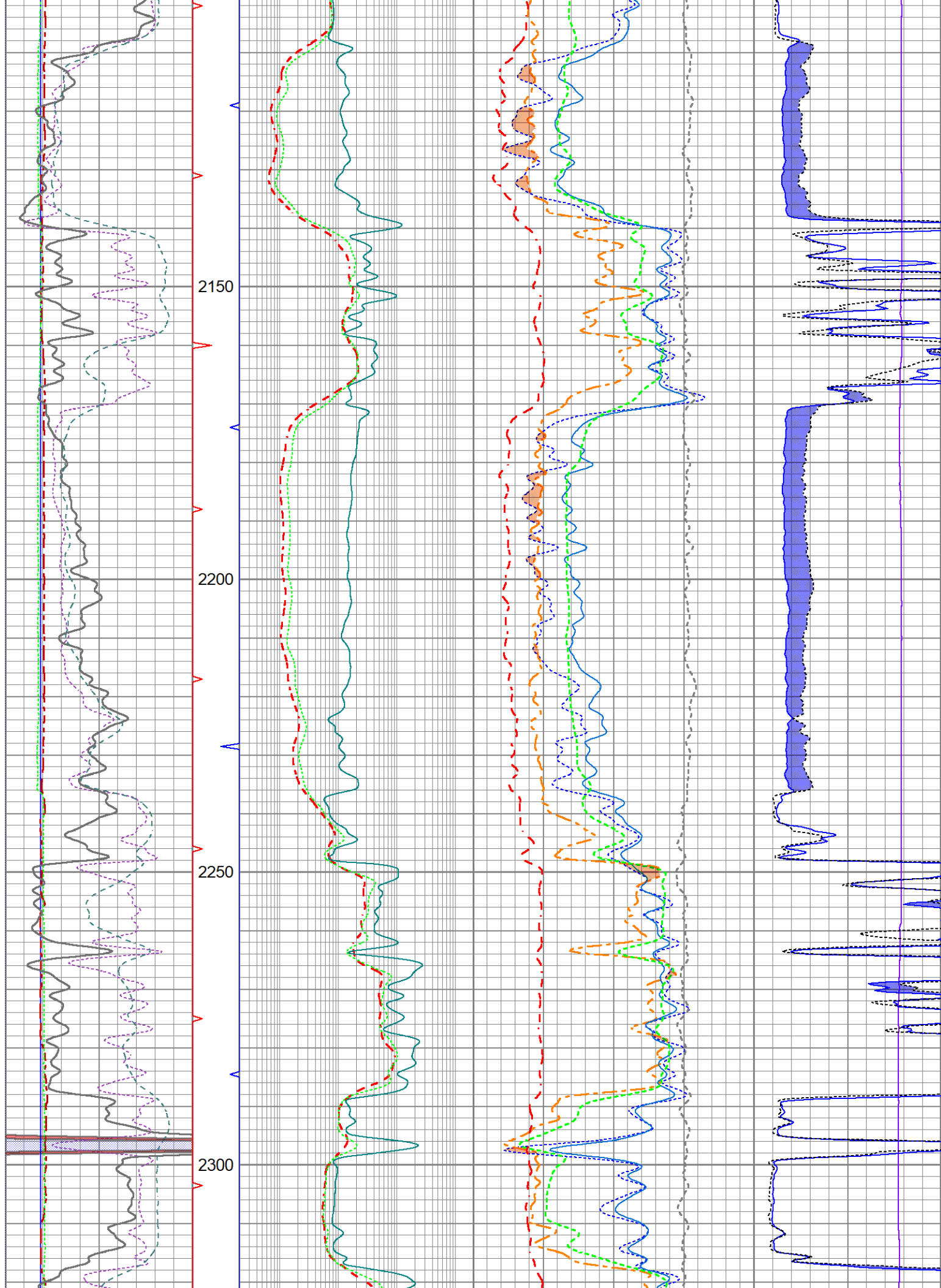


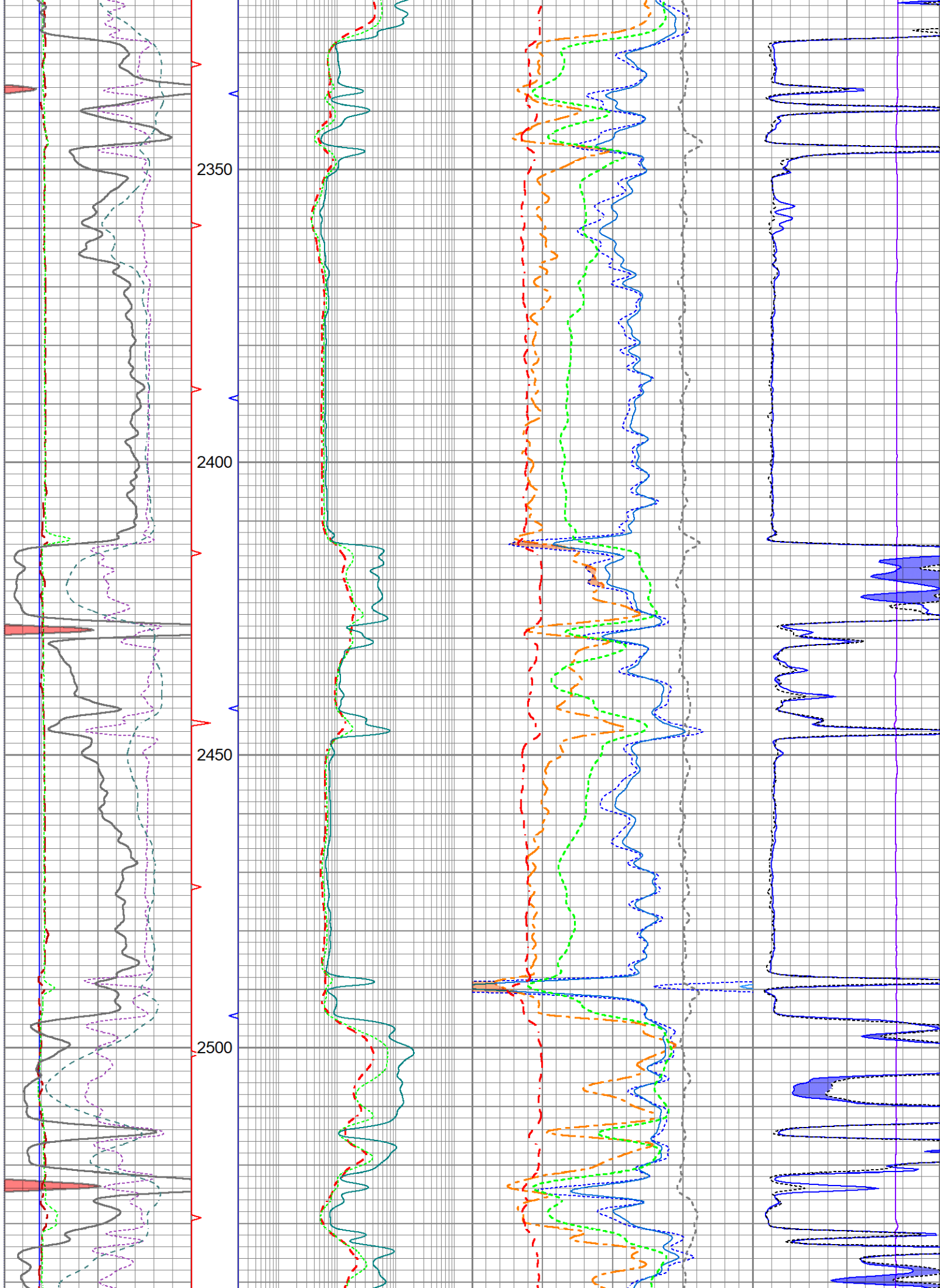


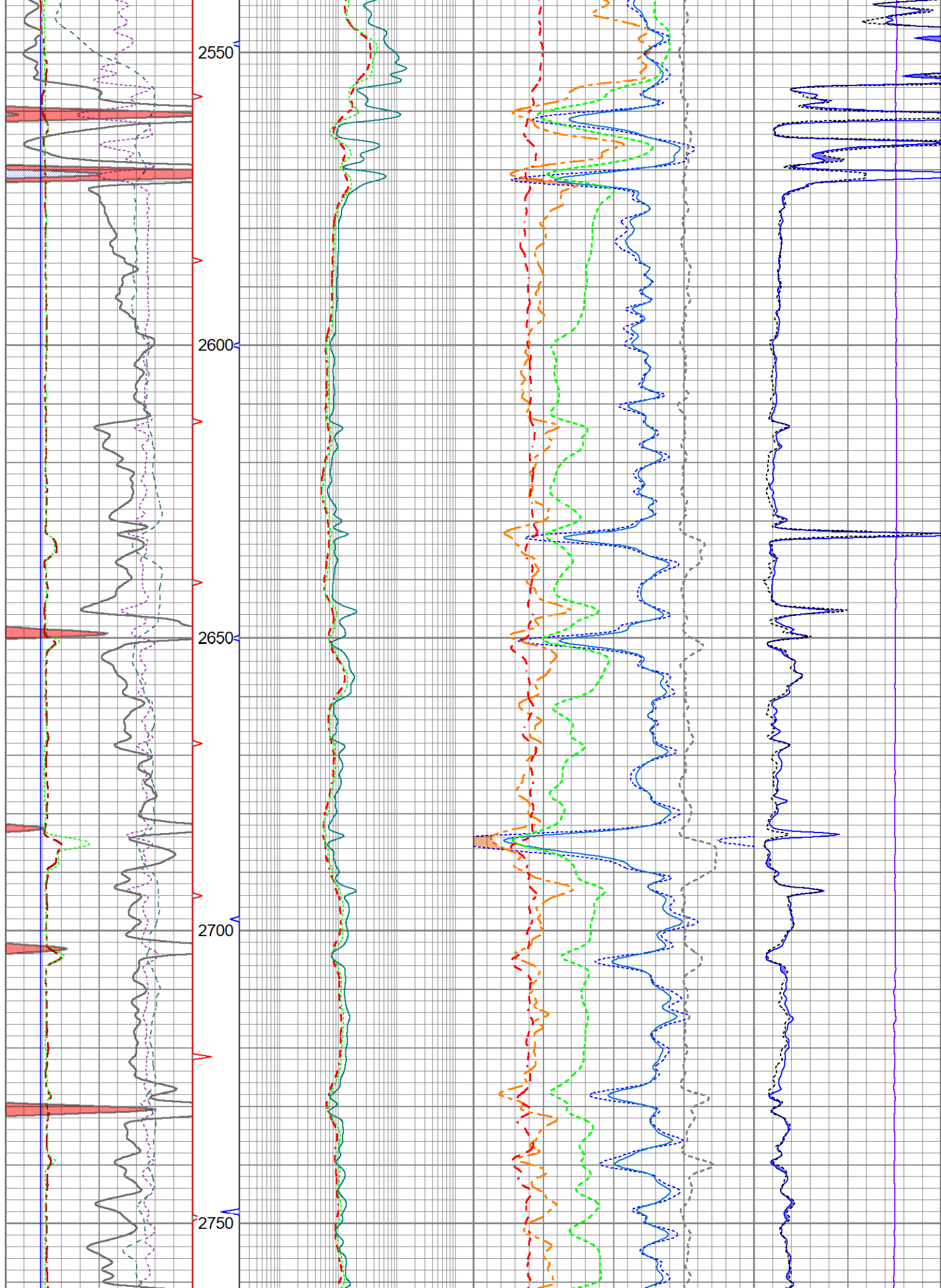


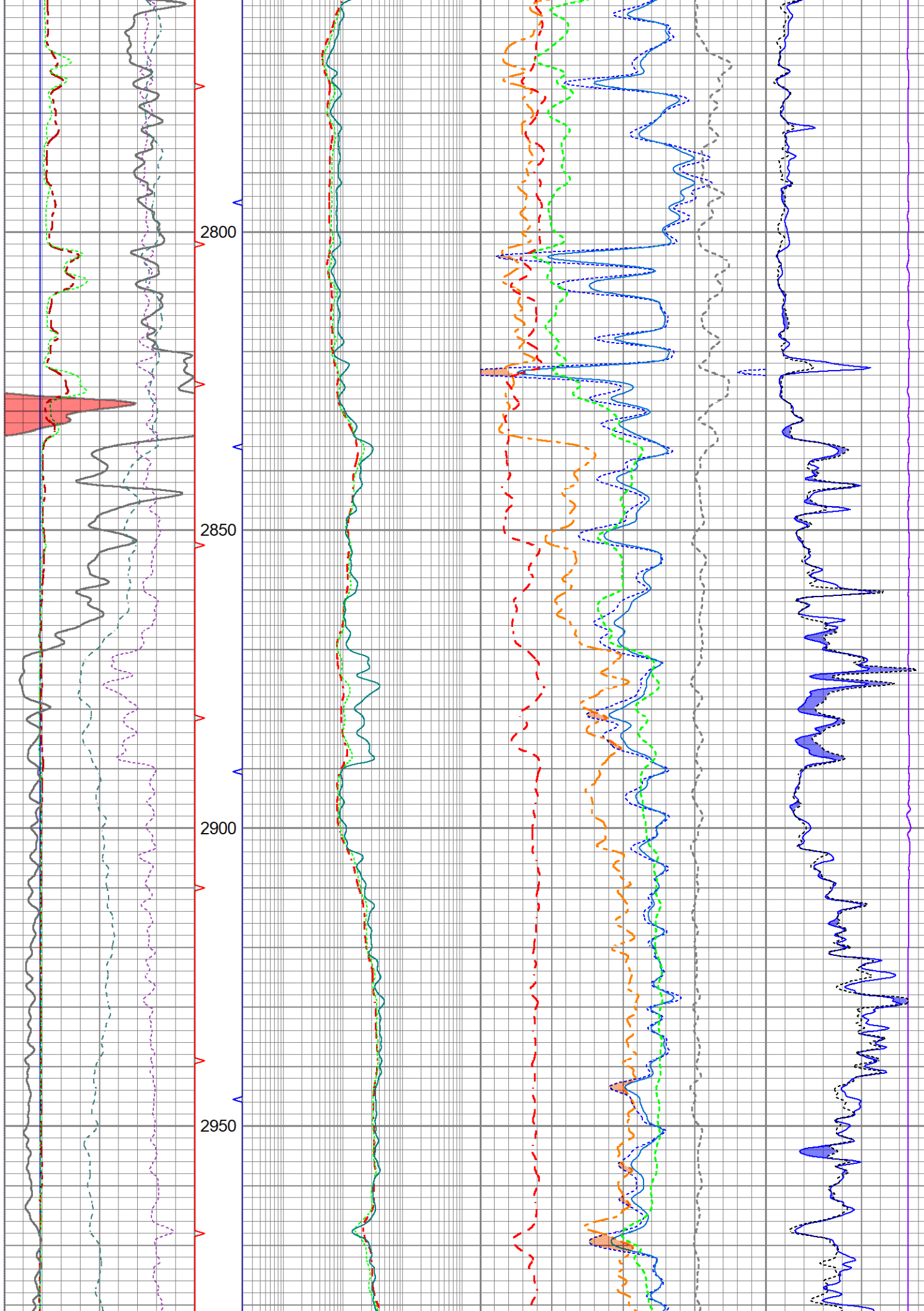


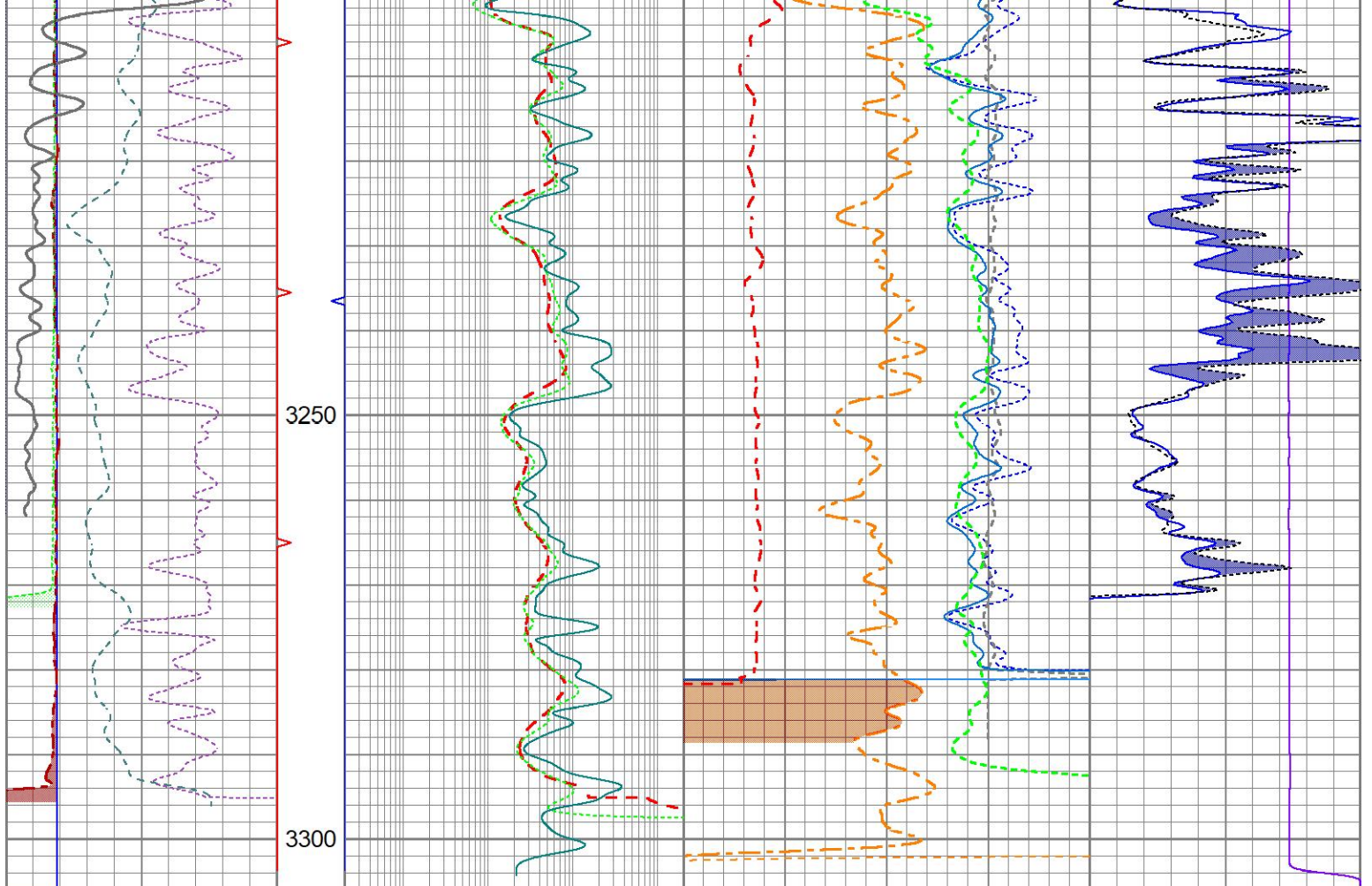












6	Bit Size (in)	16	TBHV	0.2	Resistivity (Ohm-m)	2000	30	Density Porosity (pu)	-10	500	Line Tension (lb)	0	
6	Density Caliper (in)	16		0.2	Medium (Ohm-m)	2000	30	Neutron Porosity (pu)	-10		Micro Inverse		
6	MCAL (in)	16	ABHV	0.2	Lateral Log (Ohm-m)	2000	2	Bulk Density (g/cc)	3	0	(Ohm-m)	40	
-160	Rxo\Rt	40					45	Sonic Porosity (pu)	-15		Micro Normal		
	Gamma Ray						0	Pe	10	Correction	0	(Ohm-m)	40
0	(GAPI)	150							-0.5	(g/cc)	0.5		
0	SP (mV)	200											

Sensor	Offset (ft)	Schematic	Description	Length (ft)	O.D. (in)	Weight (lb)
GRTemp	40.66		GR-PTS_OH (FW1306-49) Open Hole Digital Gamma Ray	3.69	3.38	40.00
GR	39.74					
MCAL	32.82		MEL-GOI (TEL) Digital Telemetry Microlog	7.21	3.50	150.00
MI	32.82					
MN	32.70					
LD_HEAD_V	30.36					
IntTemp	29.36					

			LDT-V4A (Osage_1_upgrade)	9.83	4.00	300.00	
DCAL	23.78						
LS_ACC	23.28						
LCSBIN	23.28						
LSDAC	23.28						
W9	23.28						
W4	23.28						
W3	23.28						
W2	23.28						
W1	23.28						
SS_ACC	23.03						
SCSBIN	23.03						
SSDAC	23.03						
W10	23.03						
W8	23.03						
W7	23.03						
W6	23.03						
W5	23.03			DIL-GEAR (158) Dual Induction Electrical Log	21.36	4.00	395.00
CILD	10.92						
SP	10.42						
CILM	7.00						
RLL3	1.65						

Dataset: ow2-9160 lawco.db: field/well/LDTDILM/pass1
 Total length: 42.09 ft
 Total weight: 885.00 lb
 O.D.: 4.00 in