



LITHO DENSITY  
NEUTRON  
LOG

Company	Palomino Petroleum	Company	Palomino Petroleum
Well	Nichol #3	Well	Nichol #3
Field	Rosemary Southeast	Field	Rosemary Southeast
County	Trego	County	Trego
State	Kansas	State	Kansas
Location:	2040' FSL & 2230' FEL		API #: 15 195 23080
Permanent Datum	SEC 21 TWP 14S RGE 25W	Ground Level	Elevation 2359'
Log Measured From	KB 8' AGL	Drilling Measured From	KB
Other Services	Elevation		K.B. 2367' D.F. 2366' G.L. 2359'
DIL			ML

Date	12-20-18
Run Number	One
Depth Driller	4333'
Depth Logger	4334'
Bottom Logged Interval	4312'
Top Log Interval	3400'
Casing Driller	8 5/8" @ 218'
Casing Logger	218'
Bit Size	7 7/8"
Type Fluid in Hole	Chemical Mud
Density / Viscosity	9.3/57
PH / Fluid Loss	9.5/8.8
Source of Sample	Pit
Rm @ Meas. Temp	1.2@76degf
Rmf @ Meas. Temp	0.9@76degf
Rmc @ Meas. Temp	1.44@76degf
Source of Rmf / Rmc	Calculated
Rm @ BHT	0.84@109degf
Time Circulation Stopped	1:15 p.m.
Time Logger on Bottom	3:40 p.m.
Maximum Recorded Temperature	109degf
Equipment Number	T127
Location	Hays, KS
Recorded By	C.Patterson
Witnessed By	Mr. Ryan Seib

<<< Fold Here >>>

All interpretations are opinions based on inferences from electrical or other measurements and we cannot and do not guarantee the accuracy or correctness of any interpretation, and we shall not, except in the case of gross or willful negligence on our part, be liable or responsible for any loss, costs, damages, or expenses incurred or sustained by anyone resulting from any interpretation made by any of our officers, agents or employees. These interpretations are also subject to our general terms and conditions set out in our current Price Schedule.

Comments

Collyer,KS Exit115 Banner Road Exit ,  
Then go South on KS-198(130 ave or Co Rd.523) for 14 mi.,  
Tank Batteries on east and west side of road  
East into Location on south side of tank batteries

Thanks for using Gemini Wireline LLC  
785-625-1182

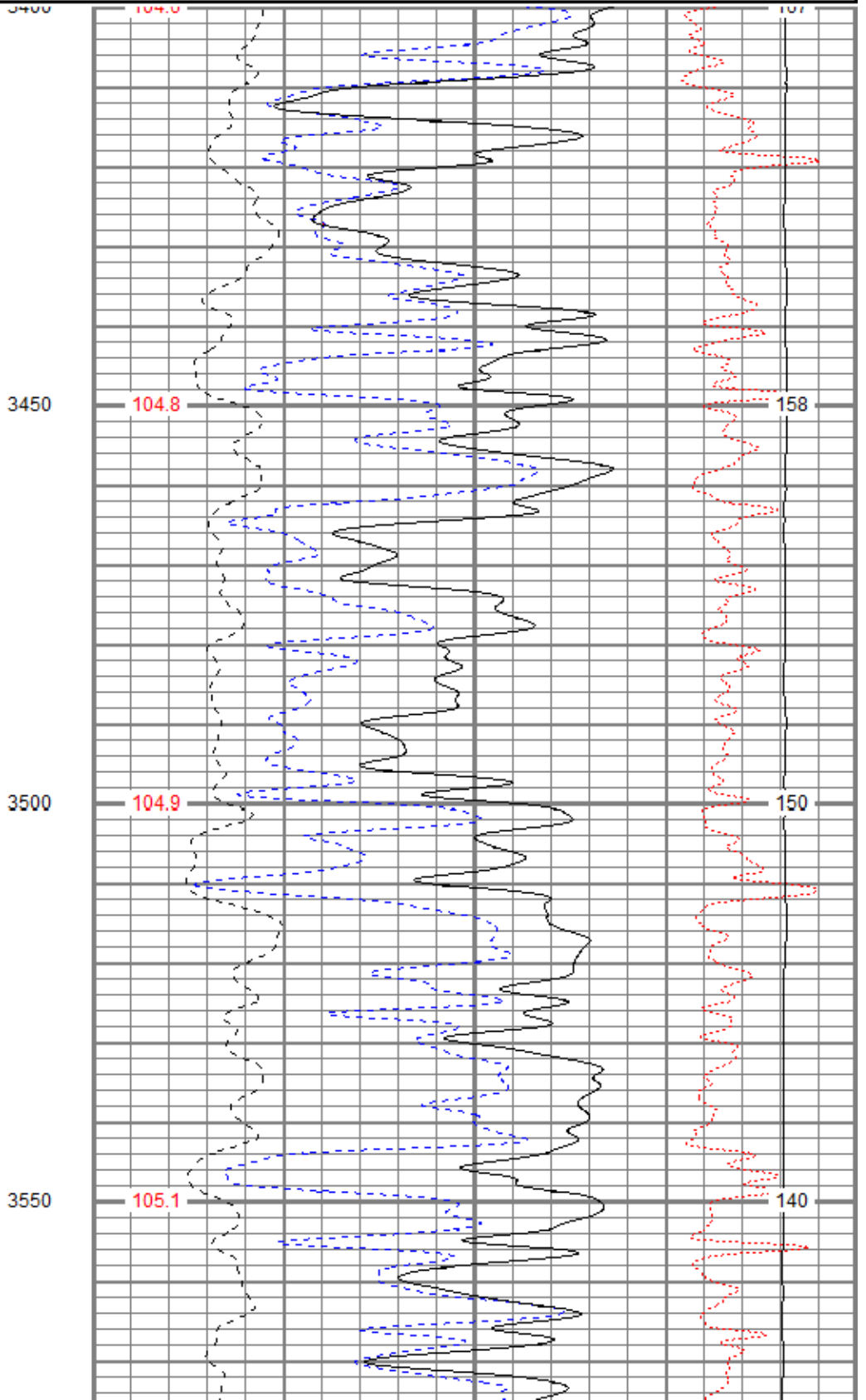
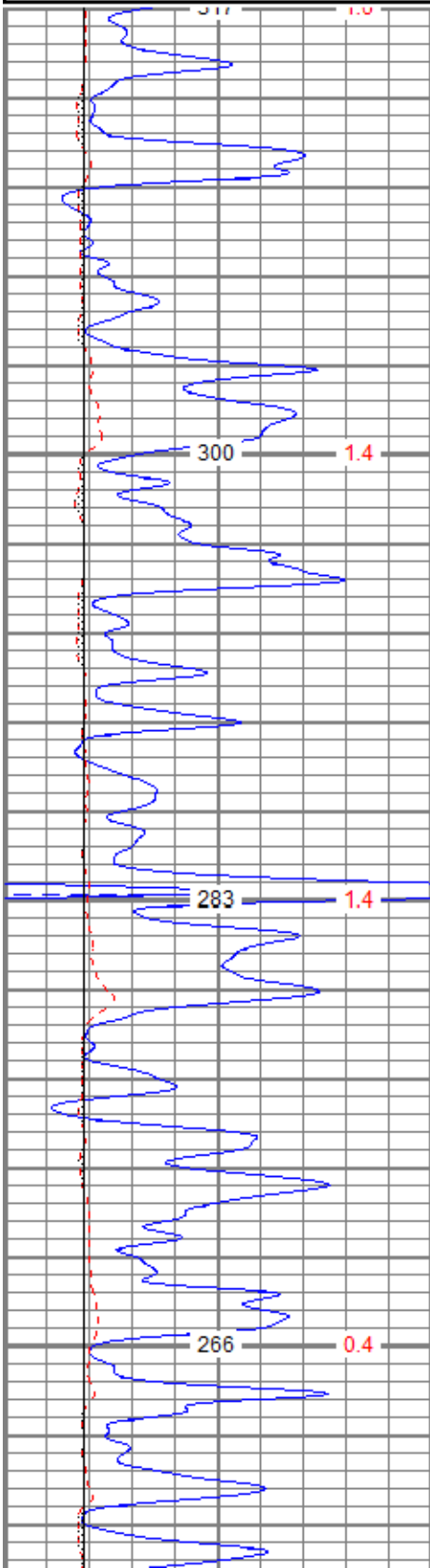


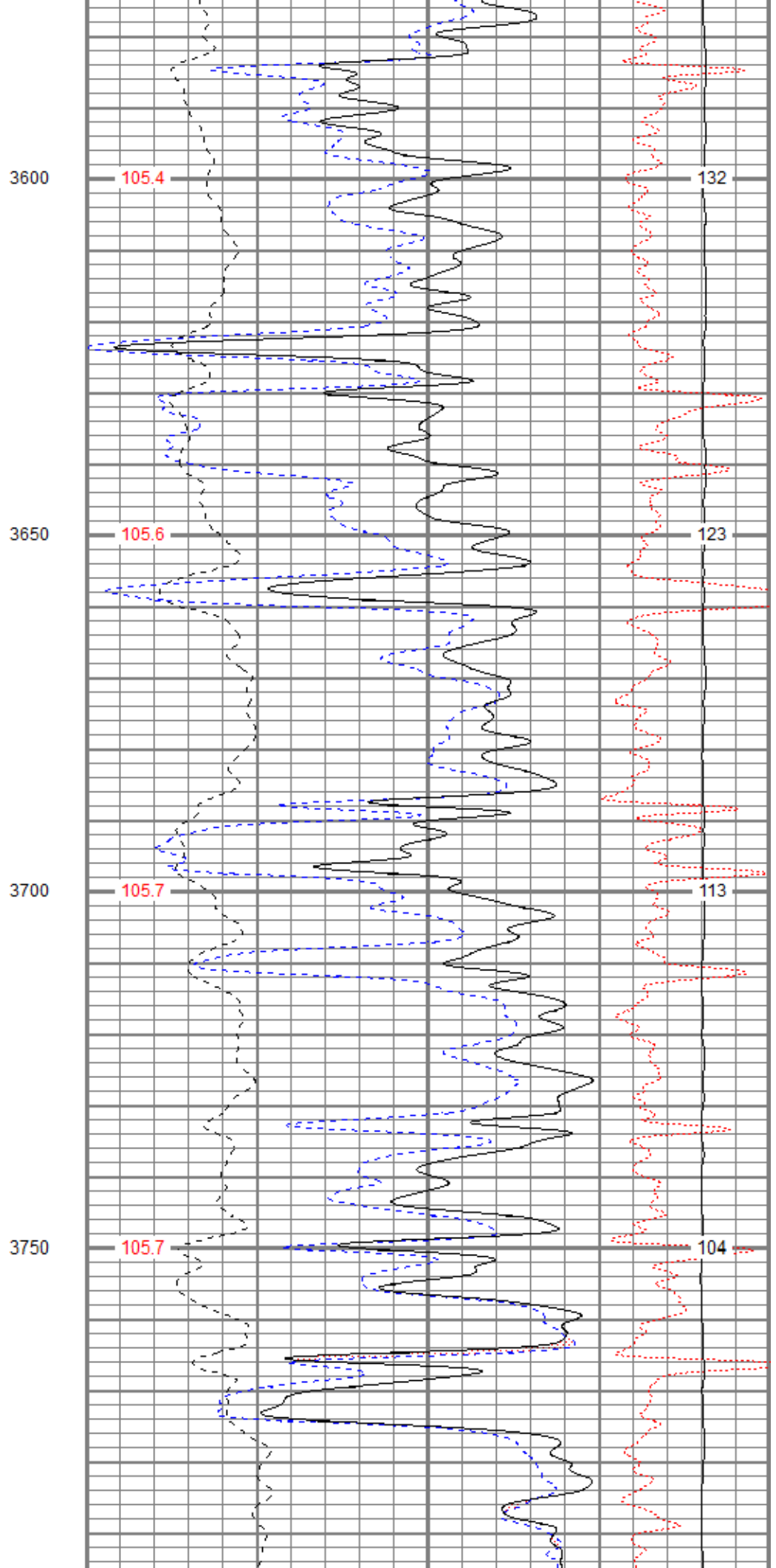
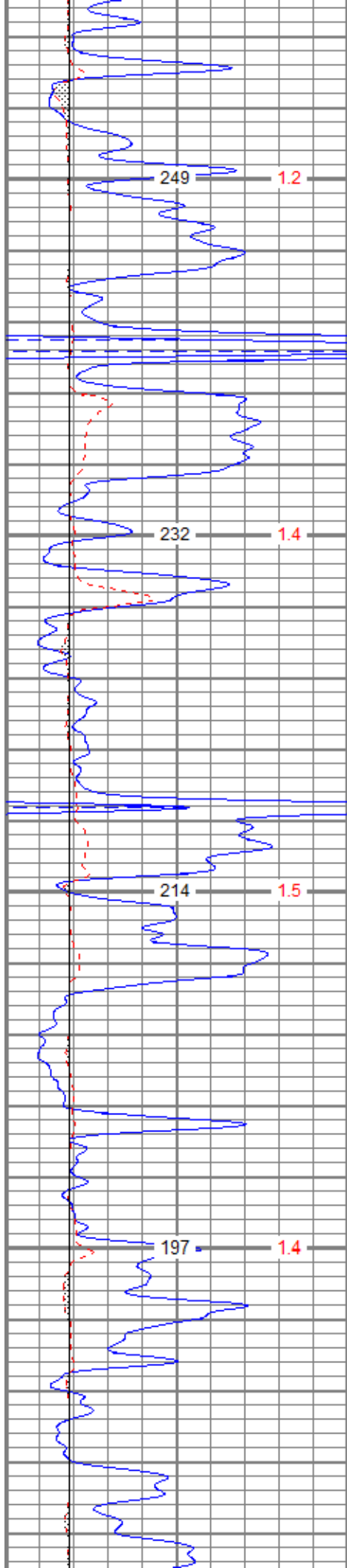
MAIN PASS

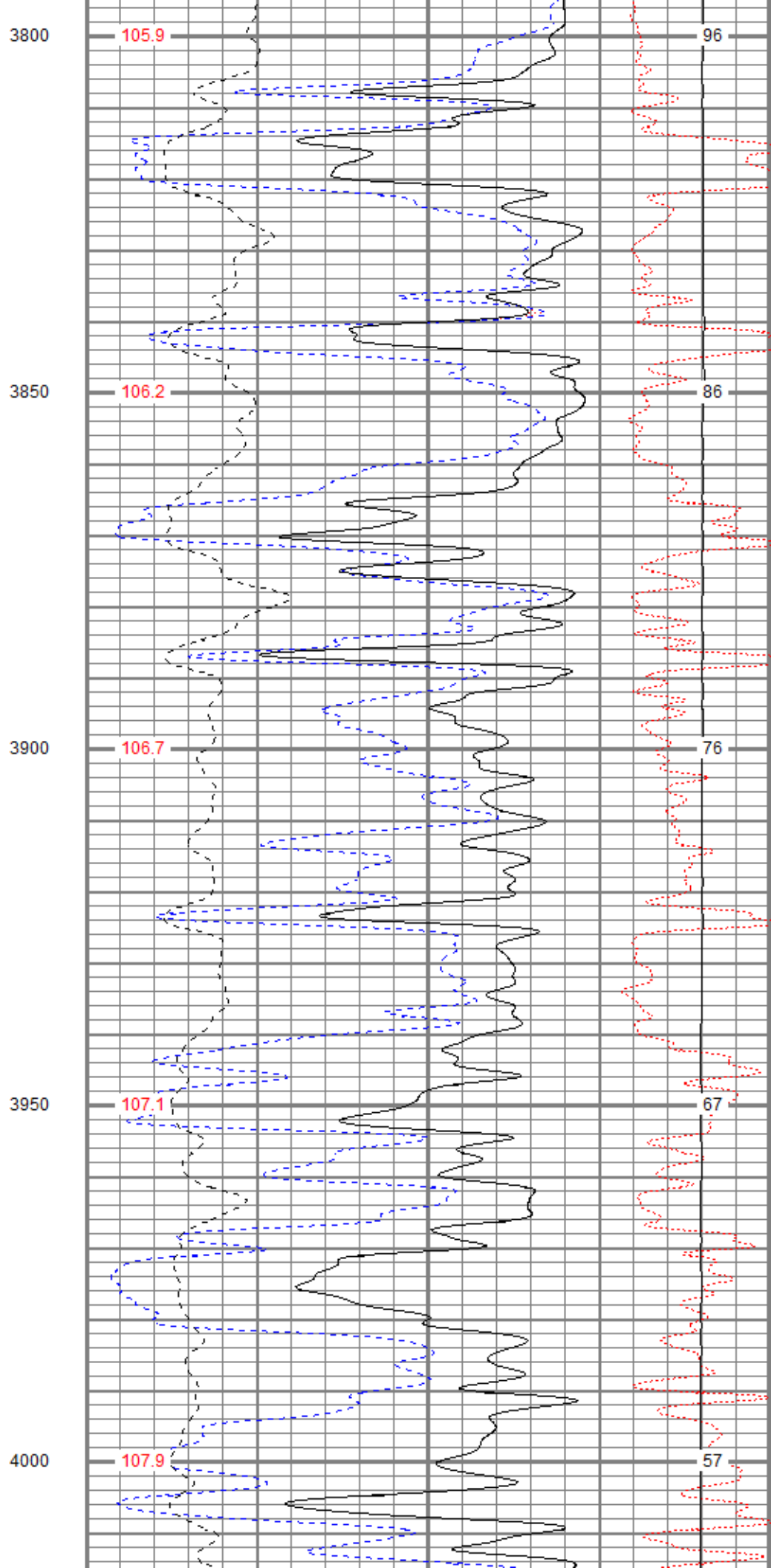
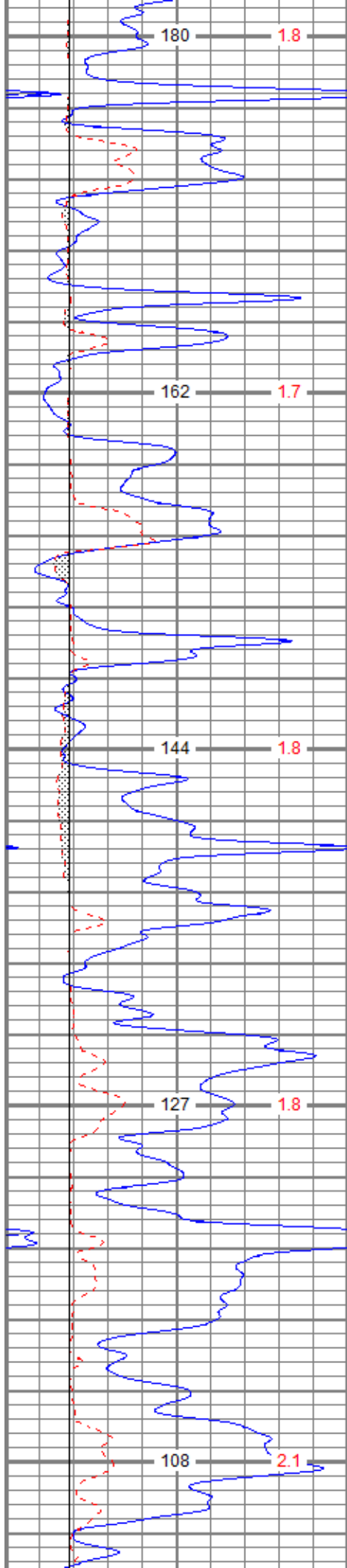
Database File ppnichol#3oh.db  
 Dataset Pathname pass2.1  
 Presentation Format digital\_kcdnl  
 Dataset Creation Thu Dec 20 17:05:40 2018  
 Charted by Depth in Feet scaled 1:240

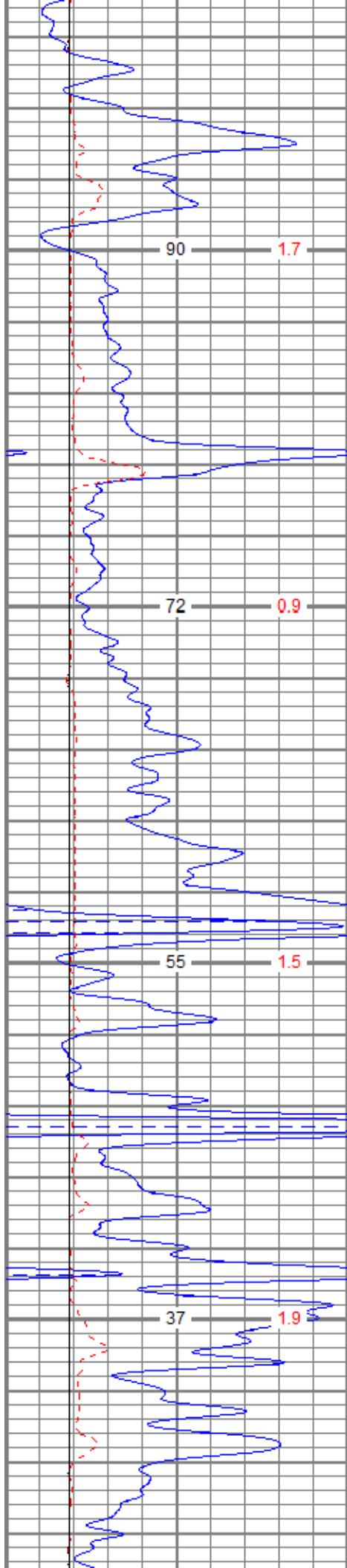
0	GR (GAPI)	150
6	DCAL (in)	16
6	BOREID (in)	16
	TBHV (ft3)	DEVI (deg)

30	NPOR (pu)	-10			
30	DPOR (pu)	-10			
70	DPOR (pu)	30			
0	Pe (barn)	10	-0.25	RHOC (g/cc)	0.25
	TEMP (degF)	8000		LTEN (lb)	0
					ABHV (ft3)







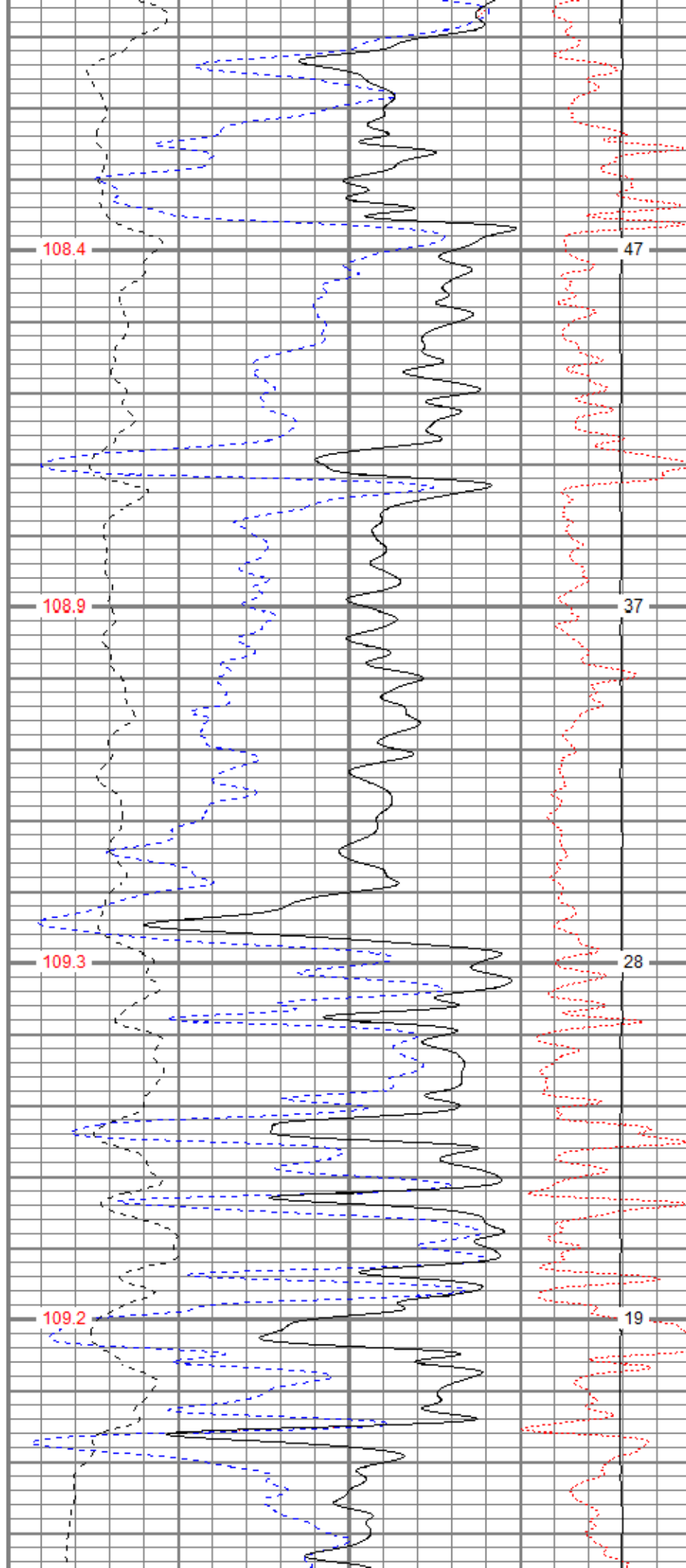


4050

4100

4150

4200

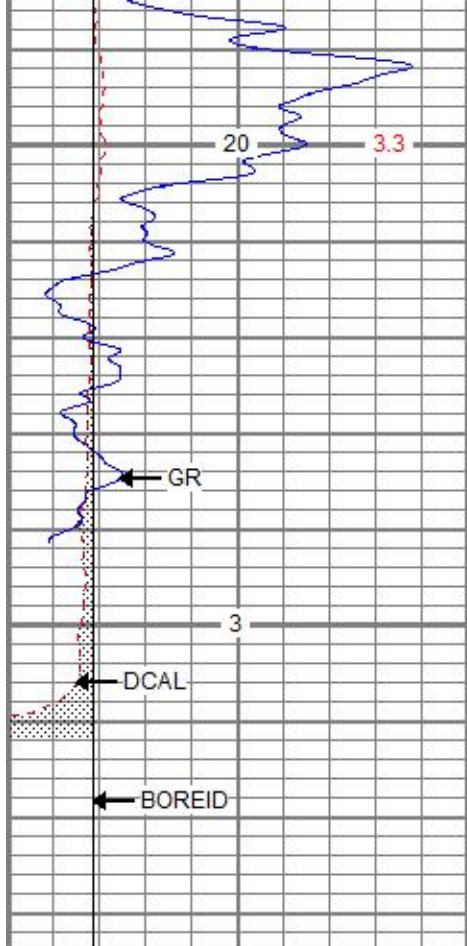


47

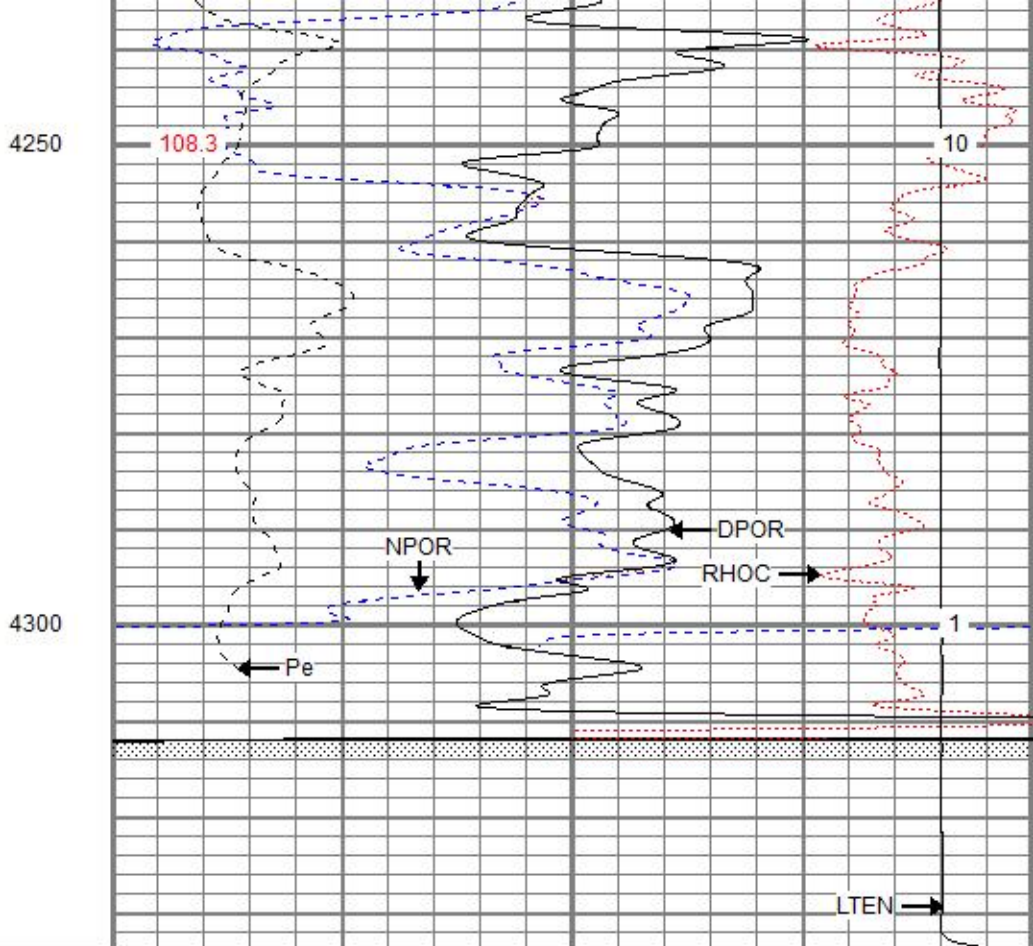
37

28

19



0	GR (GAPI)	150
6	DCAL (in)	16
6	BOREID (in)	16
	TBHV (ft3)	DEVI (deg)



30	NPOR (pu)	-10			
30	DPOR (pu)	-10			
70	DPOR (pu)	30			
0	Pe (barn)	10	-0.25	RHOC (g/cc)	0.25
	TEMP (degF)	8000	LTEN (lb)	0	ABHV (ft3)

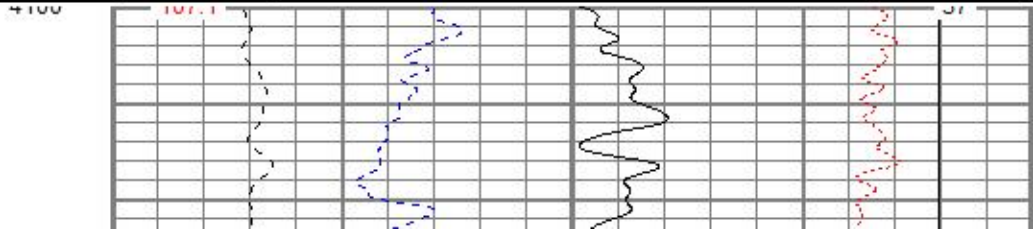
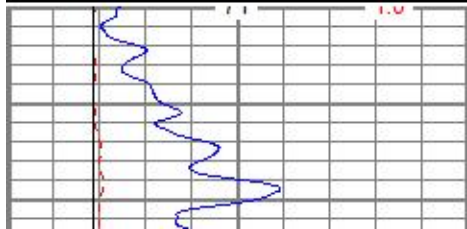


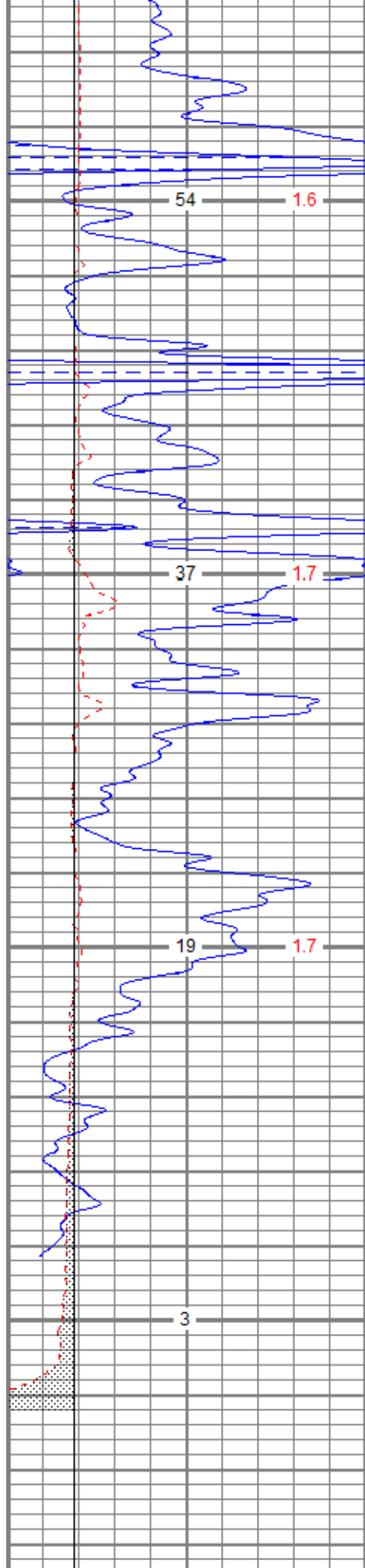
# REPEAT SECTION

Database File ppnichol#3oh.db  
 Dataset Pathname pass1.1  
 Presentation Format digital\_kcdnl  
 Dataset Creation Thu Dec 20 16:37:41 2018  
 Charted by Depth in Feet scaled 1:240

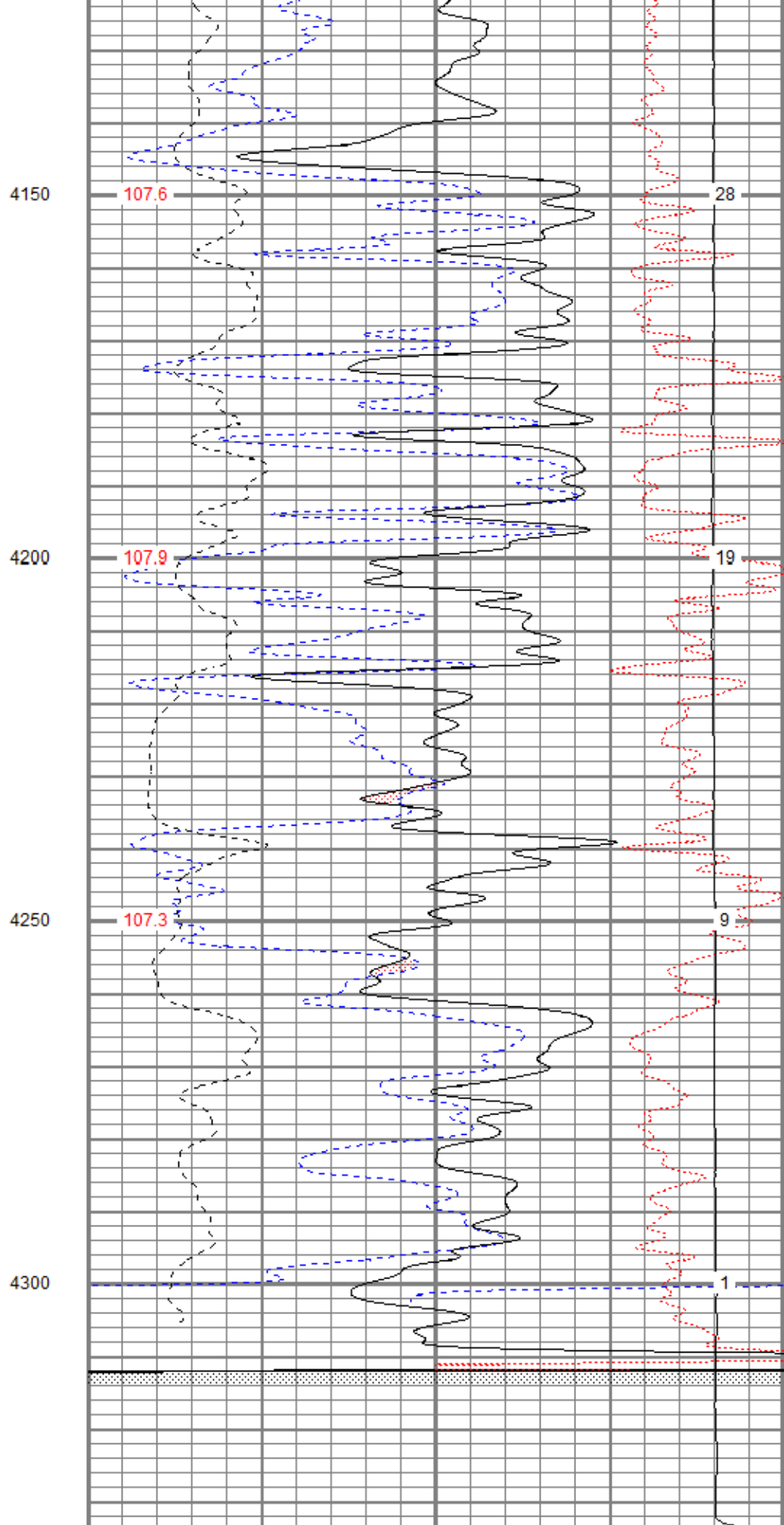
0	GR (GAPI)	150
6	DCAL (in)	16
6	BOREID (in)	16
	TBHV (ft3)	DEVI (deg)

30	NPOR (pu)	-10			
30	DPOR (pu)	-10			
70	DPOR (pu)	30			
0	Pe (barn)	10	-0.25	RHOC (g/cc)	0.25
	TEMP (degF)	8000	LTEN (lb)	0	ABHV (ft3)





0	GR (GAPI)	150
6	DCAL (in)	16



30	NPOR (pu)	-10
30	DPOR (pu)	-10

0	BOREID (in)	16	70	DPOR (pu)	30
	TBHV (ft3)	DEVI (deg)	0	Pe (barn)	10
					-0.25
					RHOC (g/cc)
					0.25
					8000
					LTEN (lb)
					0
					TEMP
					(degF)
					ABHV (ft3)

### Calibration Report

Database File ppnichol#3oh.db  
 Dataset Pathname pass2.1  
 Dataset Creation Thu Dec 20 17:05:40 2018

### Dual Induction Calibration Report

Serial-Model: 5375-G  
 Surface Cal Performed: Sat Oct 10 08:33:18 2015  
 Downhole Cal Performed: Wed Dec 05 05:00:18 2018  
 After Survey Verification Performed: Sat Oct 10 08:33:27 2015

#### Surface Calibration

		Readings			References		Results	
Loop:	Air	Loop		Air	Loop		m	b
Deep	0.007	0.642	V	0.000	350.000	mmho/m	551.294	-3.816
Medium	0.010	0.728	V	0.000	400.000	mmho/m	556.531	-5.391
Internal:	Zero	Cal		Zero	Cal		m	b
Deep	0.007	0.642	V	0.000	350.000	mmho/m	550.717	-3.768
Medium	0.010	0.729	V	0.000	550.000	mmho/m	764.510	-7.354

#### Downhole Calibration

		Readings			References		Results	
Internal:	Zero	Cal		Zero	Cal		m	b
Deep	0.145	350.239	mmho/m	-0.044	350.323	mmho/m	1.001	-0.189
Medium	0.435	400.472	mmho/m	-0.037	400.340	mmho/m	1.001	-0.473
Shallow	2.440	0.018	V	500.000	2.000	Ohm-m	205.554	0.825

#### After Survey Verification

		Readings			Targets		Results	
Internal:	Zero	Cal		Zero	Cal		m'	b'
Deep	0.000	0.000	mmho/m	0.145	350.239	mmho/m	1.001	-0.189
Medium	0.000	0.000	mmho/m	0.435	400.472	mmho/m	1.001	-0.473
Shallow	0.000	0.000	Ohm-m	500.000	2.000	Ohm-m	1.000	0.000

### Neutron Calibration Report

Serial Number: AD5139  
 Tool Model: ADMY5139  
 Performed: (Not Performed)

Calibrator Value: 1 NAPI

Calibrator Reading: 1 cps

Sensitivity: 1 NAPI/cps

### Temperature Calibration Report

Serial Number: WithMC  
 Tool Model: WMC  
 Performed: Wed Dec 05 04:54:01 2018

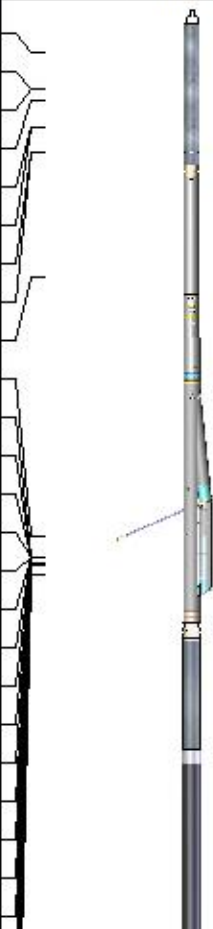
	Reference	Reading
Low Reference:	0.00 degF	0.00 degF
High Reference:	1.00 degF	1.00 degF
Gain:	1.00	
Offset:	0.00	
Delta Spacing	1	

**Inclinometer Calibration Report**

Performed:	Wed Dec 05 04:53:48 2018				
	Low Read.	High Read.	Low Ref.	High Ref.	
X Accelerometer	205.00	1843.00	-1.00	1.00	gee
Y Accelerometer	205.00	1843.00	-1.00	1.00	gee
Z Accelerometer					gee

**Gamma Ray Calibration Report**

Serial Number:	WithMC	
Tool Model:	WMC	
Performed:	Wed Dec 05 04:58:30 2018	
Calibrator Value:	1.0	GAPI
Background Reading:	0.0	cps
Calibrator Reading:	1.0	cps
Sensitivity:	1.0000	GAPI/cps

Sensor	Offset (ft)	Schematic	Description	Length (ft)	O.D. (in)	Weight (lb)
GR	40.07		CHD-STD	0.50	1.69	1.00
ACCY	38.91		ADT-WMC (WithMC) Admyr Telemetry With Mudcell	4.58	3.50	120.00
ACCX	38.91					
SSTAT	38.49					
PSTAT	37.66					
ASTAT	37.66					
GRD	36.82		NEU-ADMY5139 (AD5139) Admyr NEU DIGITAL	5.65	3.50	50.00
TEMP	36.82					
NEU	32.76					
LStat	24.30					
LS8	23.64					
LS7	23.64					
LS6	23.64		ADT1LITH-A (1) Admyr Litho Density Tool	9.29	3.50	240.00
LS5	23.64					
LS4	23.64					
LS3	23.64					
LS2	23.64					
LS1	23.64					
LSV	23.64					
LSD	23.62					
SSV	23.43					
SS8	23.43					
SS7	23.43					
SS6	23.43					

SS5	23.43					
SS4	23.43					
SS3	23.43					
SS2	23.43					
SS1	23.43					
DCAL	23.37					
SSD	23.04					
SP	10.60					
CILD	10.60					
CILM	6.89					
RLL3	1.70					
TR_Mon	0.00					
		Dataset:	ppnichol#3oh.db: field/well/run1/pass2.1			
		Total length:	41.49 ft			
		Total weight:	756.00 lb			
		O.D.:	4.00 in			