

**DUAL
INDUCTION
LOG**

Company **GRIFFIN MANAGEMENT, LLC.**
 Well **MILDRED #1**
 Field **RHODES**
 County **BARBER** State **KANSAS**

Location: **API # : 15-007-22331-0001**
1310' FSL & 2150' FWL
SEC 14 TWP 33S RGE 12W
 Permanent Datum **GROUND LEVEL** Elevation **1438**
 Log Measured From **KELLY BUSHING 6' A.G.L.**
 Drilling Measured From **KELLY BUSHING**
 Other Services **CDL/CNL**
 Elevation
 K.B. 1444
 D.F. 1442
 G.L. 1438

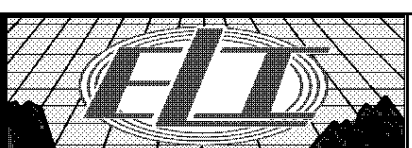
Date	12/28/18
Run Number	ONE
Depth Driller	4900
Depth Logger	4910
Bottom Logged Interval	4908
Top Log Interval	00
Casing Driller	8 5/8" @ 313'
Casing Logger	313'
Bit Size	7 7/8"
Type Fluid in Hole	CHEMICAL MUD
Density / Viscosity	9.3/53
pH / Fluid Loss	10.5/10.8
Source of Sample	FLOWLINE
Rm @ Meas. Temp	.45 @ 50F
Rmf @ Meas. Temp	.33 @ 50F
Rmc @ Meas. Temp	.54 @ 50F
Source of Rmf / Rmc	MEASUREMENT
Rm @ BHT	.18 @ 124F
Time Circulation Stopped	2 HOURS
Time Logger on Bottom	////
Maximum Recorded Temperature	124F
Equipment Number	3802
Location	HAYS, KANSAS
Recorded By	JASON CAPPELLUCCI
Witnessed By	BRUCE REED
	CHUCK GRIFFIN

<<< Fold Here >>>

All interpretations are opinions based on inferences from electrical or other measurements and we cannot and do not guarantee the accuracy or correctness of any interpretation, and we shall not, except in the case of gross or willful negligence on our part, be liable or responsible for any loss, costs, damages, or expenses incurred or sustained by anyone resulting from any interpretation made by any of our officers, agents or employees. These interpretations are also subject to our general terms and conditions set out in our current Price Schedule.

Comments

THANK YOU FOR USING ELI WIRELINE SERVICES, HAYS, KS. (785) 628-6395
 DIRECTIONS
 MEDICINE LODGE, KS. - SOUTH TO HARDTNER SHORTCUT RD. - 1 WEST
 1/2 NORTH - EAST INTO



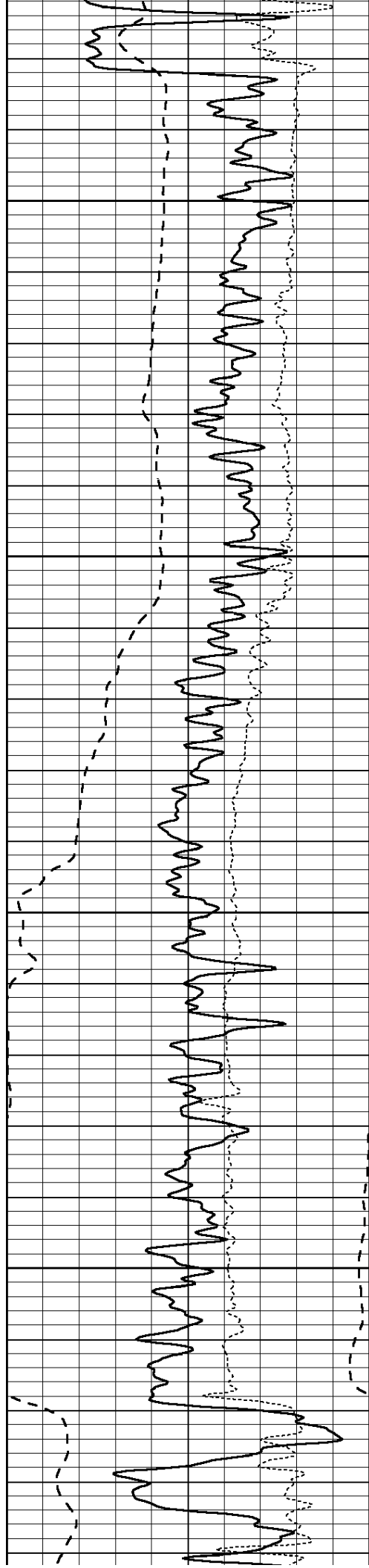
MAIN SECTION

Database File: 3433ddn.db
 Dataset Pathname: pass4.1.1
 Presentation Format: _dil
 Dataset Creation: Fri Dec 28 08:12:58 2018
 Charted by: Depth in Feet scaled 1:240

0	GAMMA RAY (GAPI)	150
-100	SP (mV)	100
-250	Rxo/Rt	50

0.2	SHALLOW GUARD (Ohm-m)	2000
0.2	MEDIUM INDUCTION (Ohm-m)	2000
0.2	DEEP INDUCTION (Ohm-m)	2000



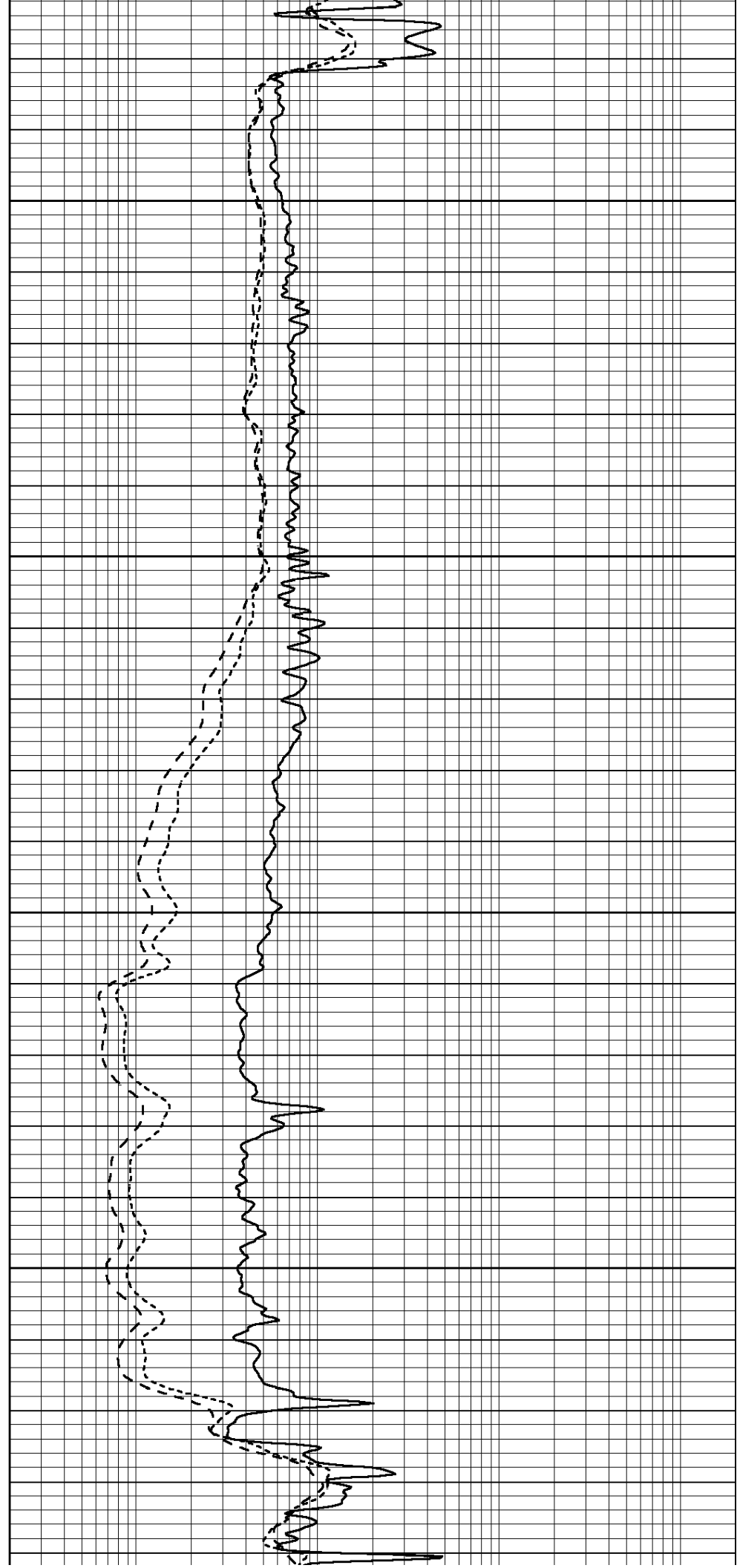


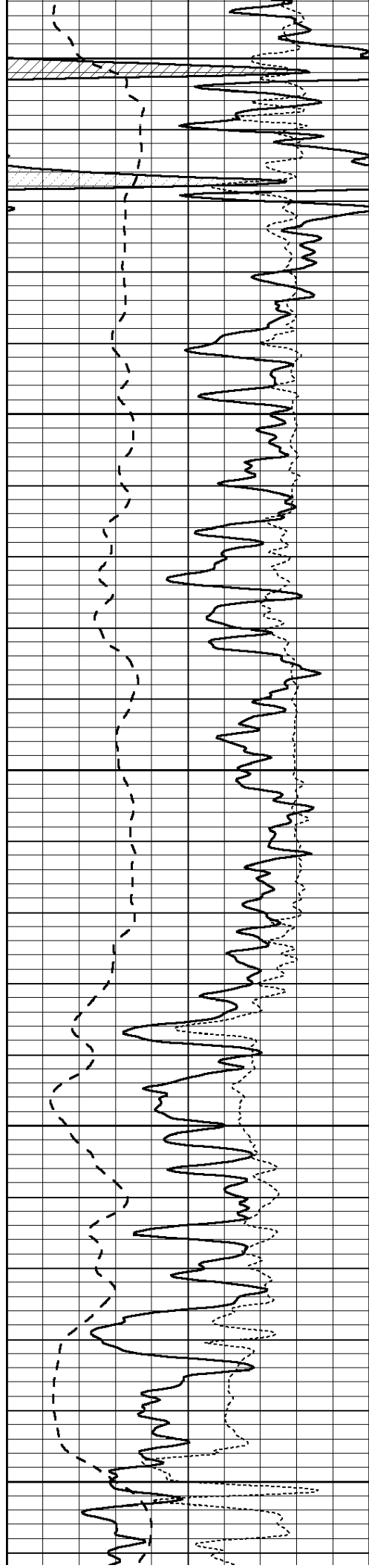
3400

3450

3500

3550





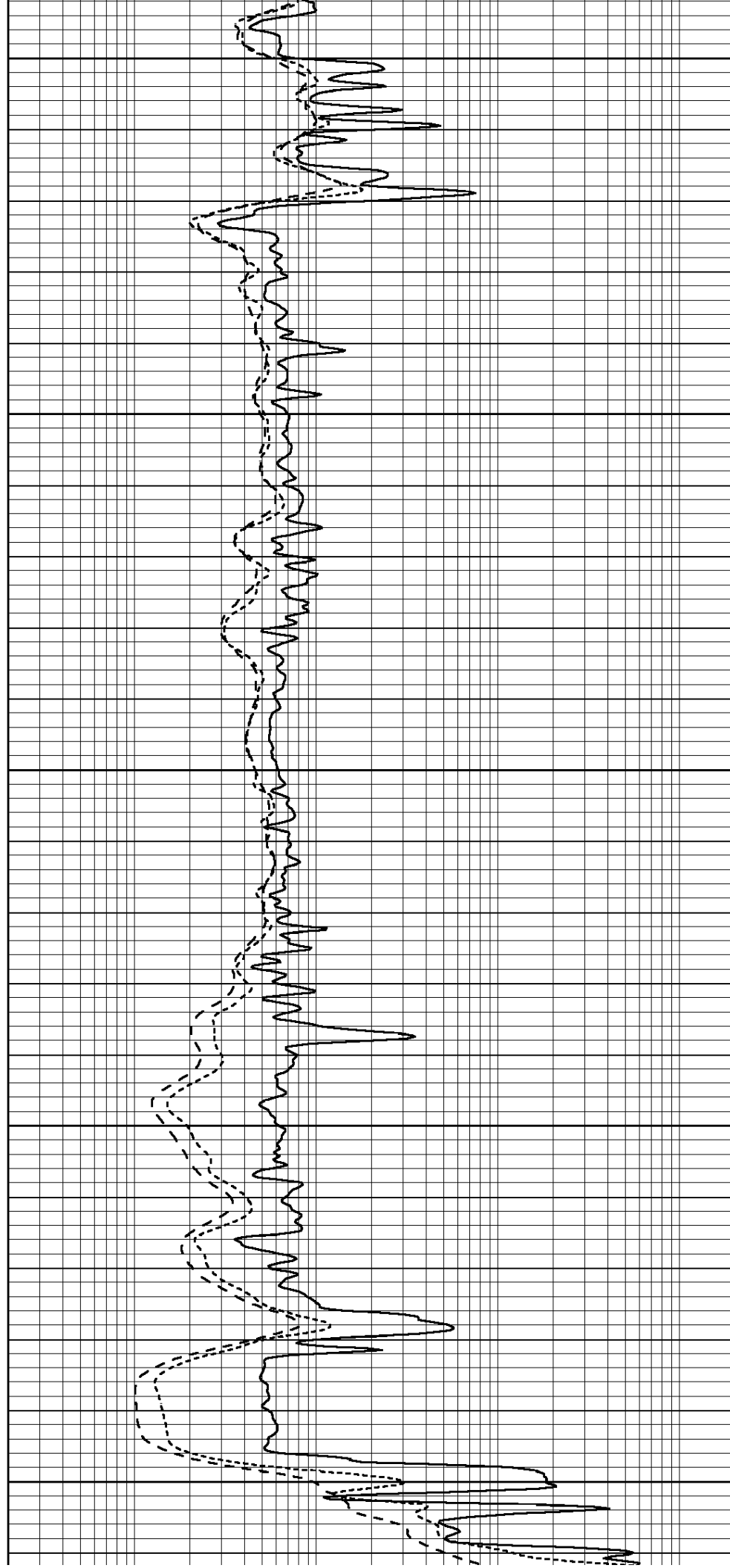
3600

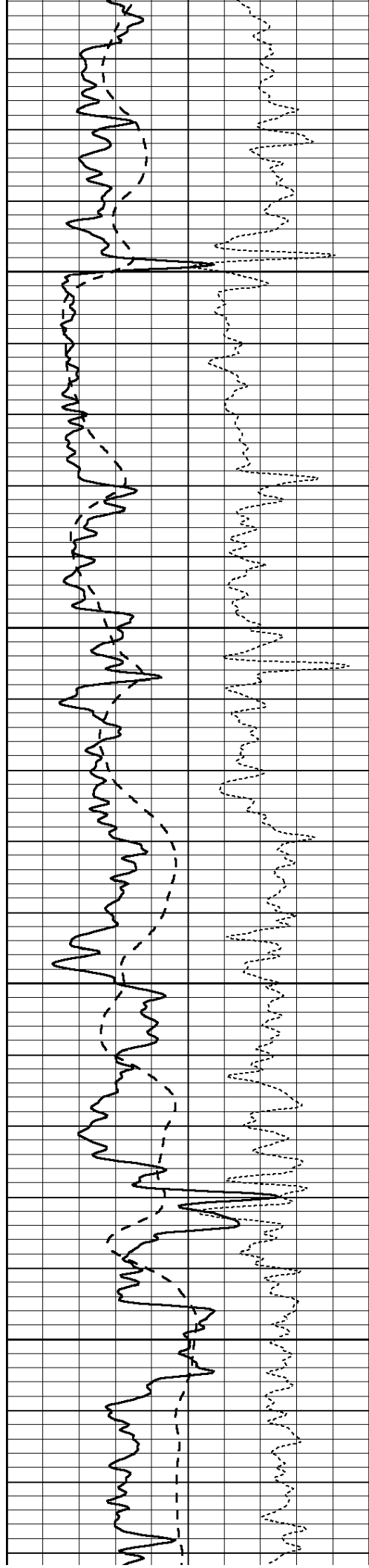
3650

3700

3750

3800



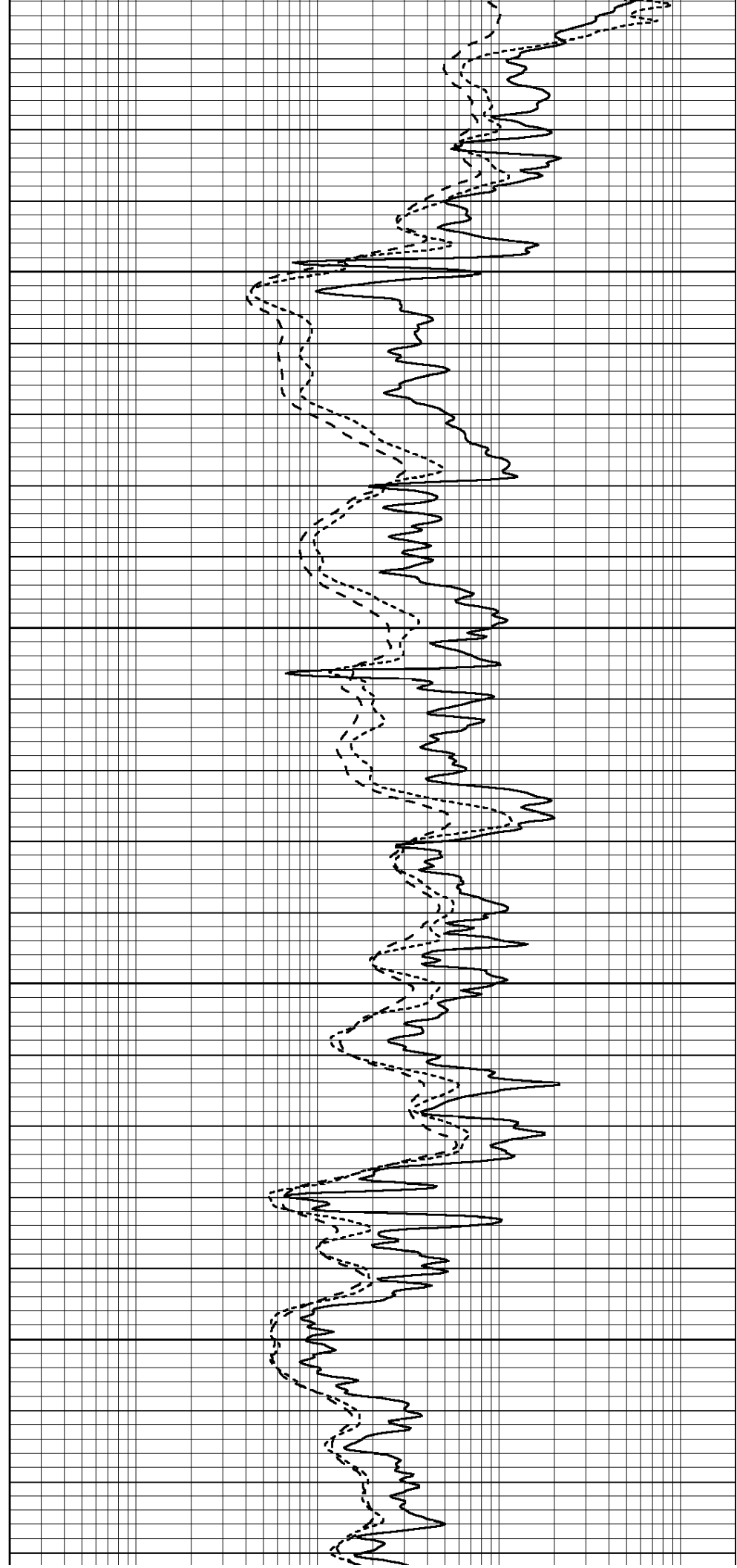


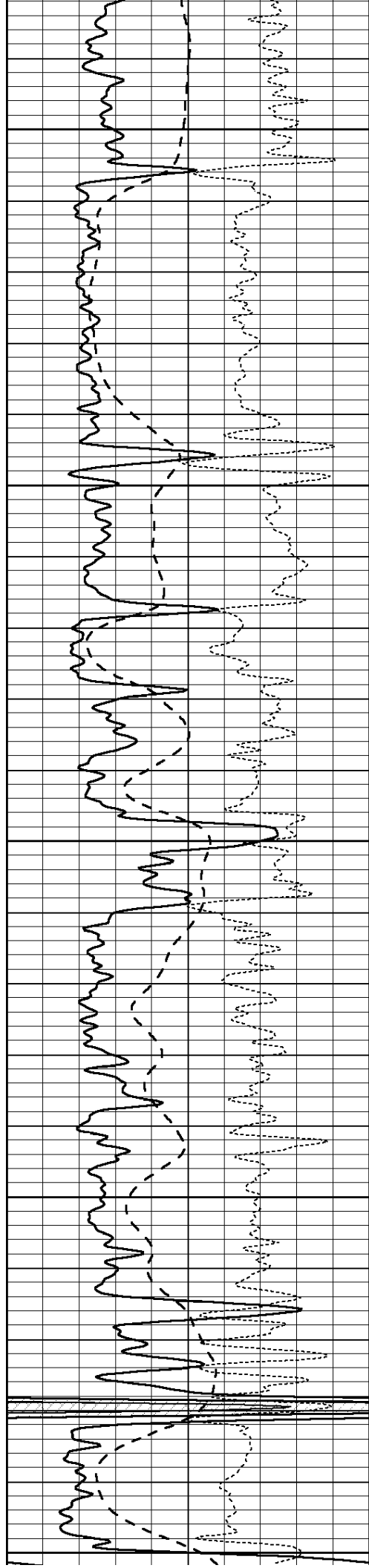
3850

3900

3950

4000





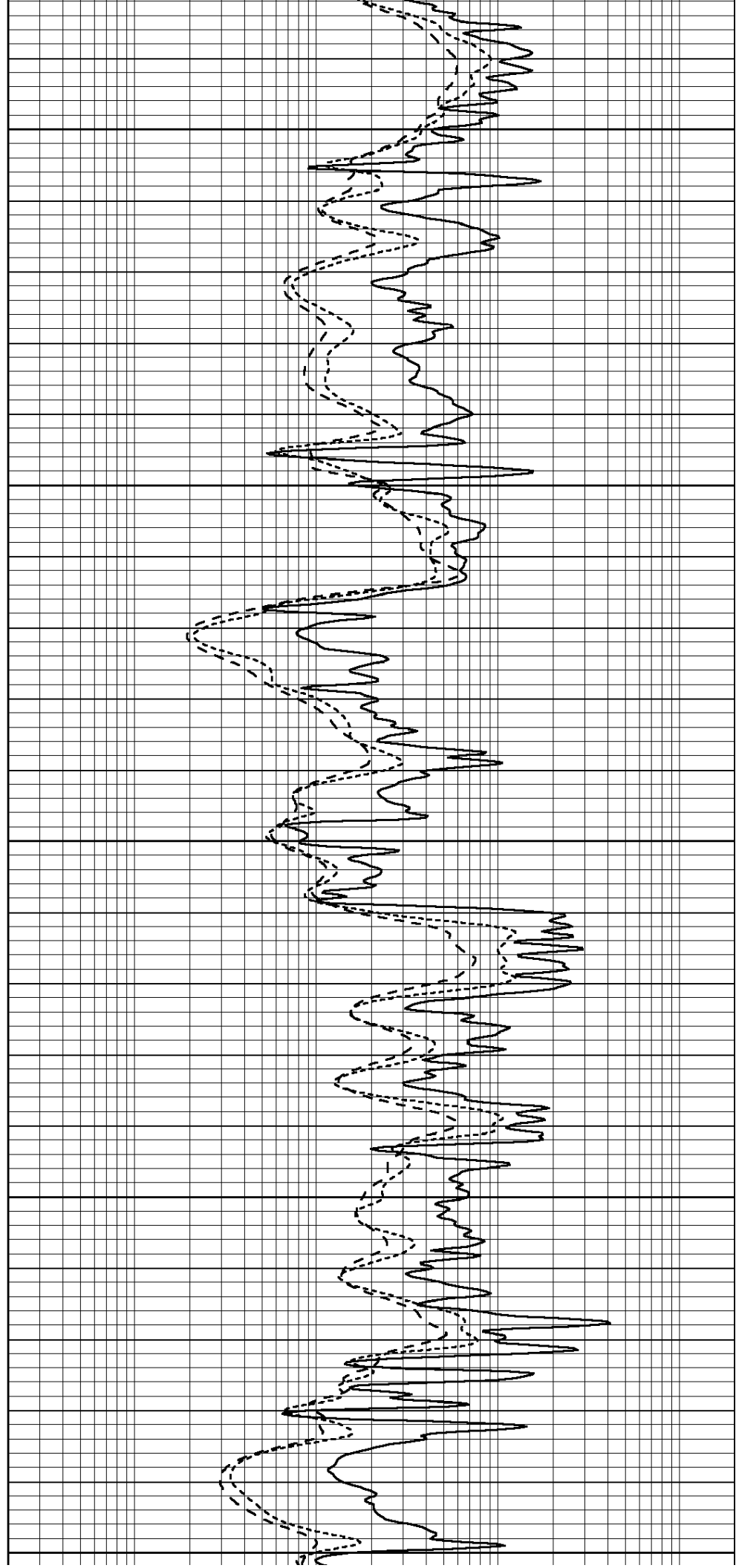
4050

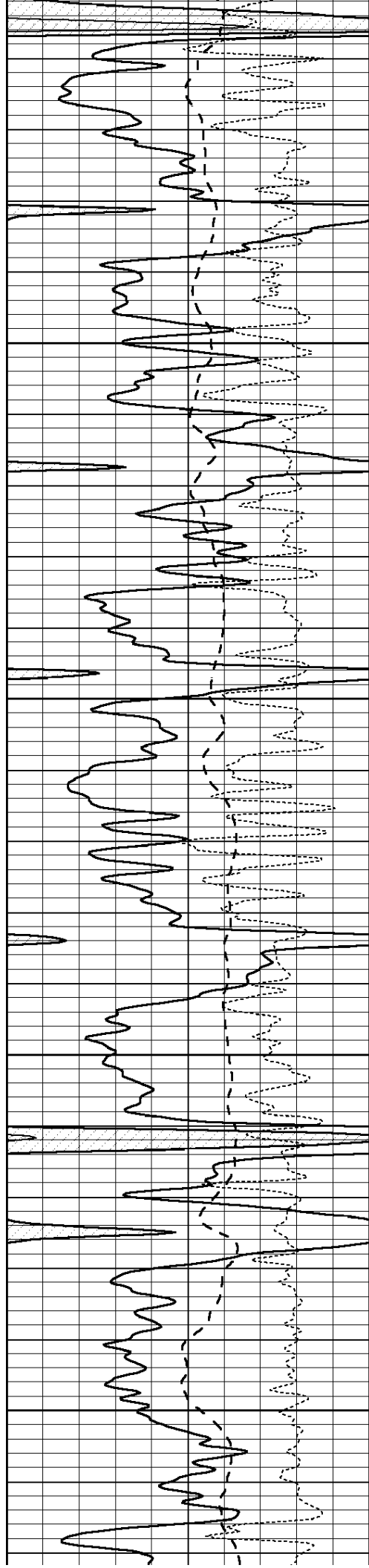
4100

4150

4200

4250



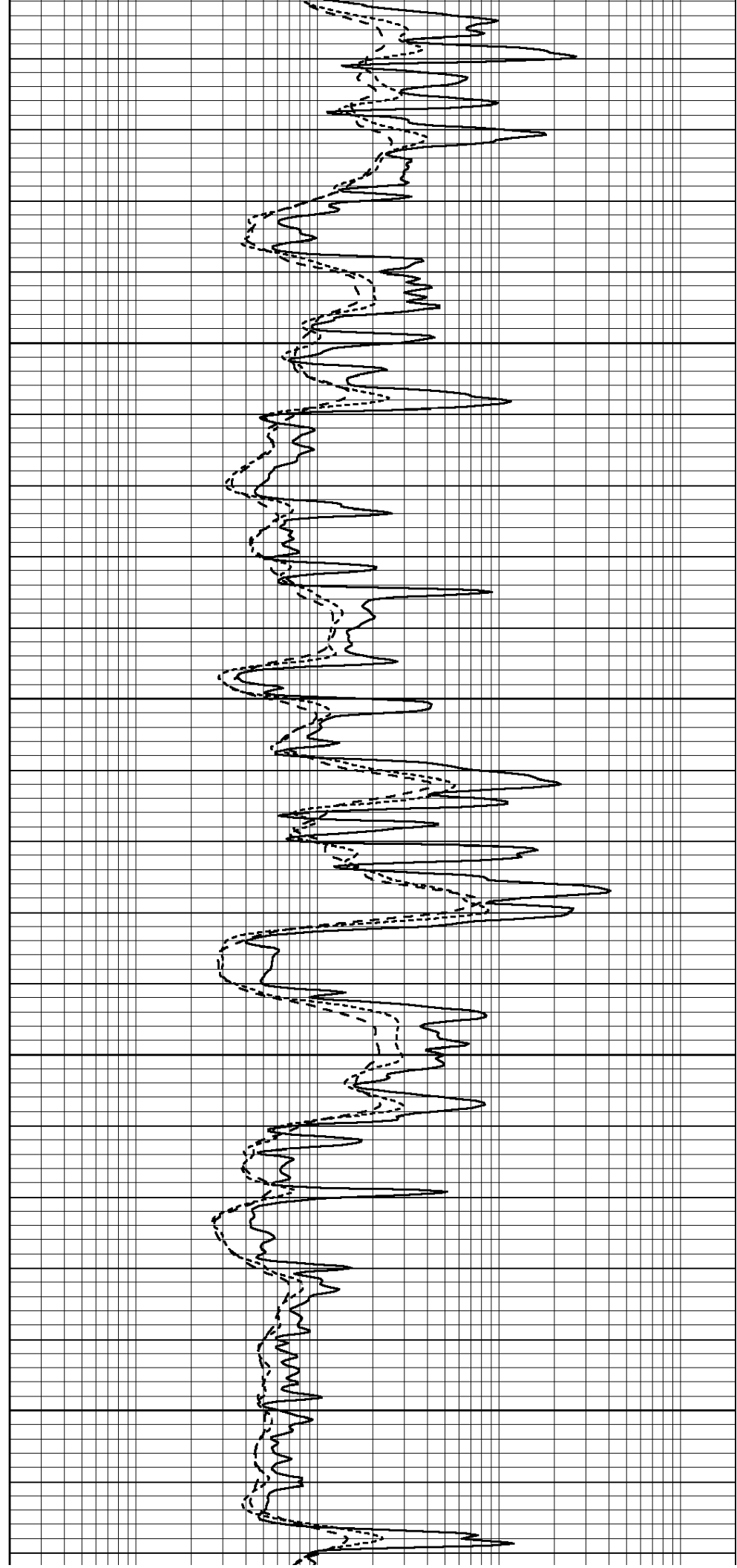


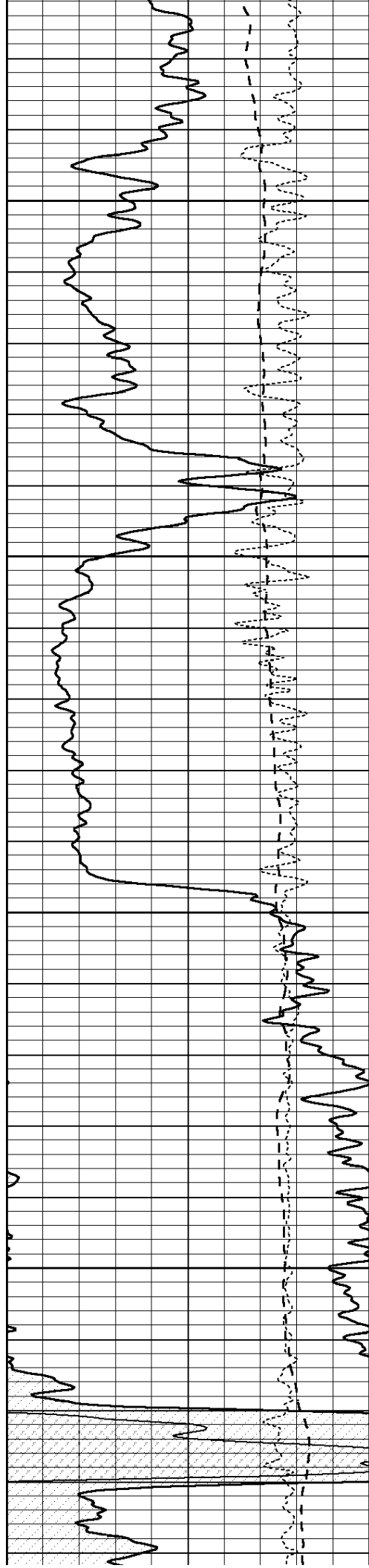
4300

4350

4400

4450



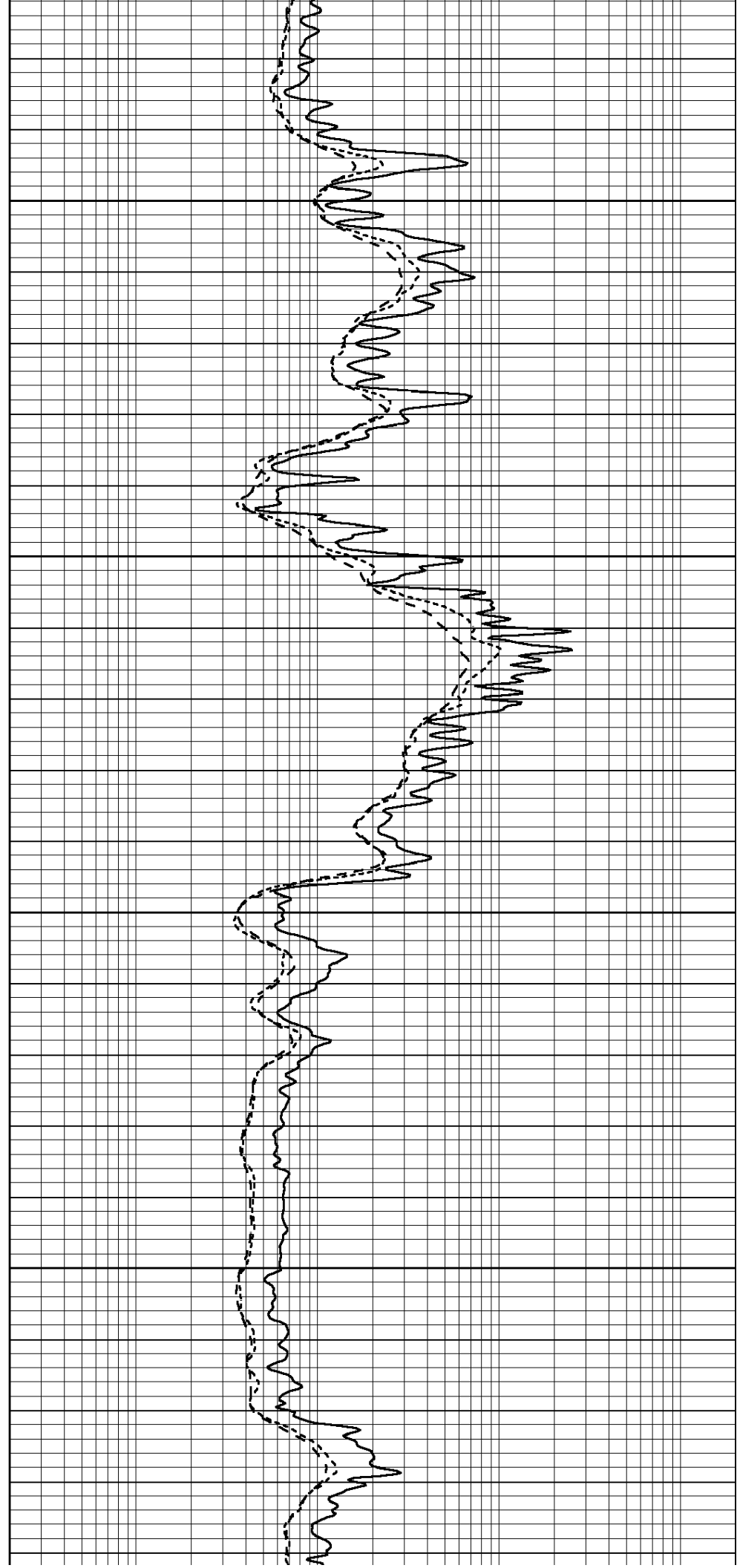


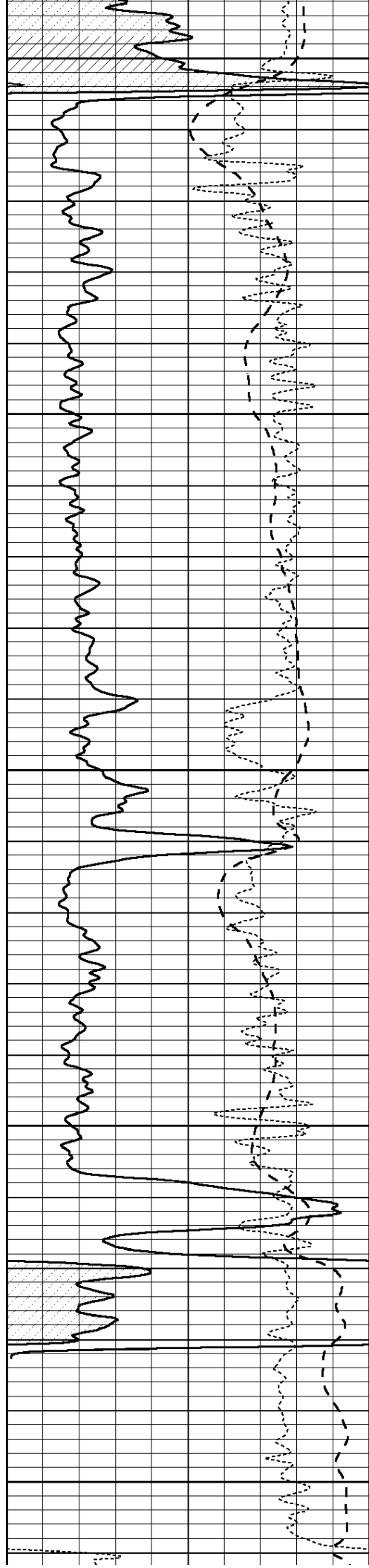
4500

4550

4600

4650





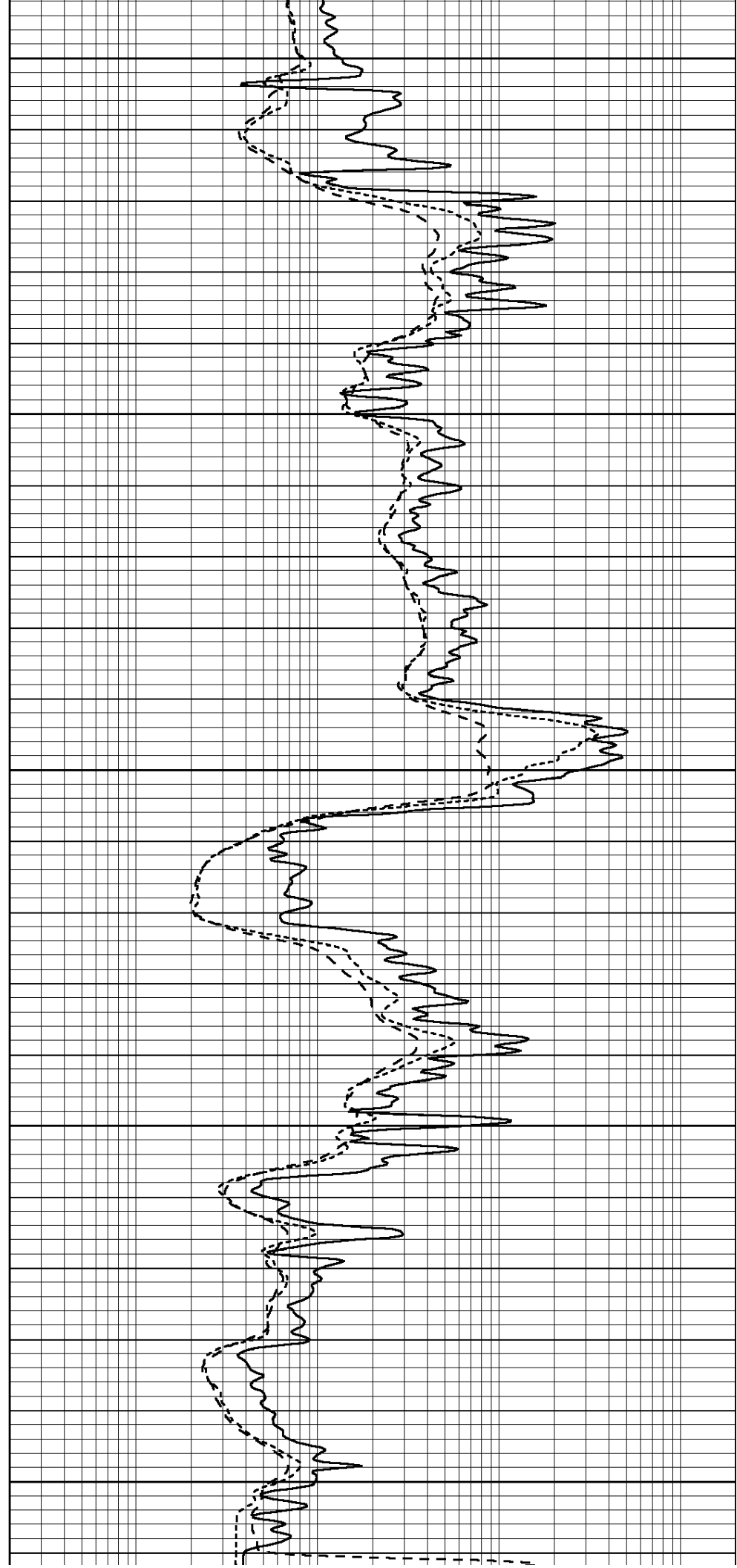
4700

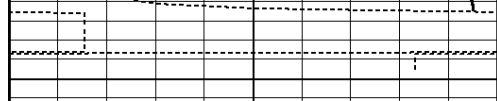
4750

4800

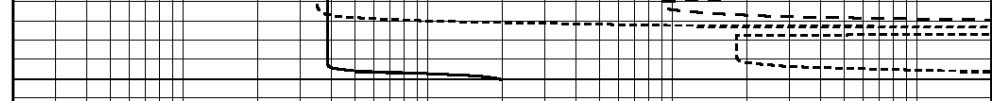
4850

4900





0	GAMMA RAY (GAPI)	150
-100	SP (mV)	100
-250	Rxo/Rt	50



0.2	SHALLOW GUARD (Ohm-m)	2000
0.2	MEDIUM INDUCTION (Ohm-m)	2000
0.2	DEEP INDUCTION (Ohm-m)	2000