



**Sonic Cement  
Bond Log**

API No.

Company **Cross Bar Energy, LLC.**

Well **Burkett B-14**

Field **Burkett**

County **Greenwood** State **Kansas**

Location

**950' FSL & 900' FWL**

Other Services

Sec: **13** Twp: **23S** Rge: **10E**

Elevation

Permanent Datum Ground Level Elevation 1256  
 Log Measured From Ground Level 0 Ft. Above Perm. Datum  
 Drilling Measured From Ground Level

K.B.  
D.F.  
G.L. 1256

Run Number **One**

Date Survey **1/4/2019**

Date Cementing **12/21/2018**

Type Cementing Operation **Primary**

Depth Driller

Depth Logger **2120**

Logged Interval **2119 to 250**

Casing Driller **4.5 @ TD**

Float Collar -- D.V. Tool **////**

Squeeze Depth **////**

Amount & Type Cement **////**

Amount & Type Admix **////**

Type Fluid In Hole **Water**

Fluid Level **Full**

Salinity PPM CL **////**

Weight lb/gal -- Vis. **////**

Approx. Logged Cement Top **385**

Calculated Cement Top

Max. Hole Temperature **////**

Tool No. **DIG02**

Spacing Recorded **3-5**

Equipment -- Location **02 Pratt**

Recorded By **N. Schmeidler**

Witnessed By **Albert Brensing**

<<< Fold Here >>>

All interpretations are opinions based on inferences from electrical or other measurements and we cannot and do not guarantee the accuracy or correctness of any interpretation, and we shall not, except in the case of gross or willful negligence on our part, be liable or responsible for any loss, costs, damages, or expenses incurred or sustained by anyone resulting from any interpretation made by any of our officers, agents or employees. These interpretations are also subject to our general terms and conditions set out in our current Price Schedule.

Comments

Thank you for using Excel Wireline (620) 388-5676

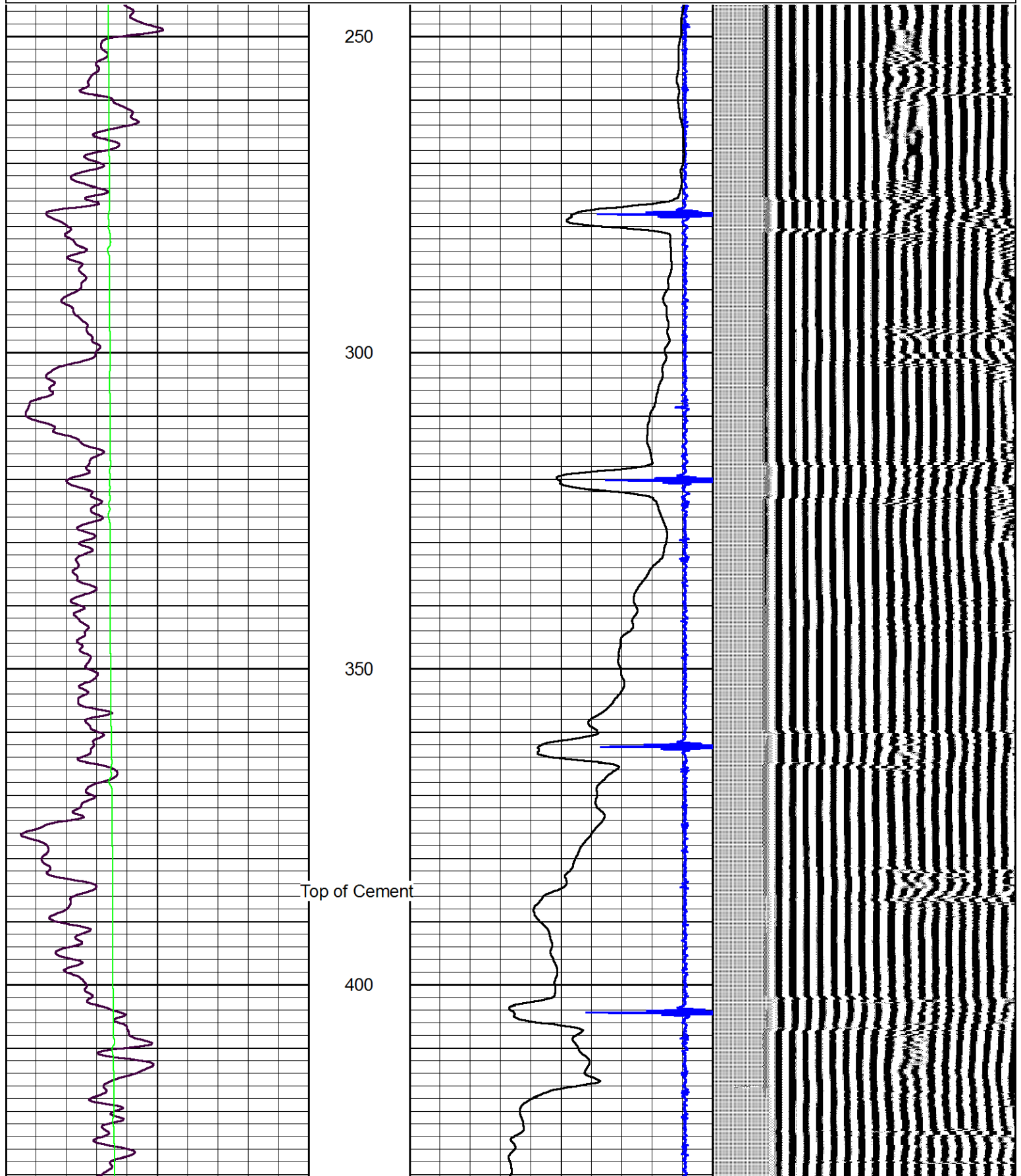
Cassoday  
E on 150th to Q Rd  
1/4 N  
E into

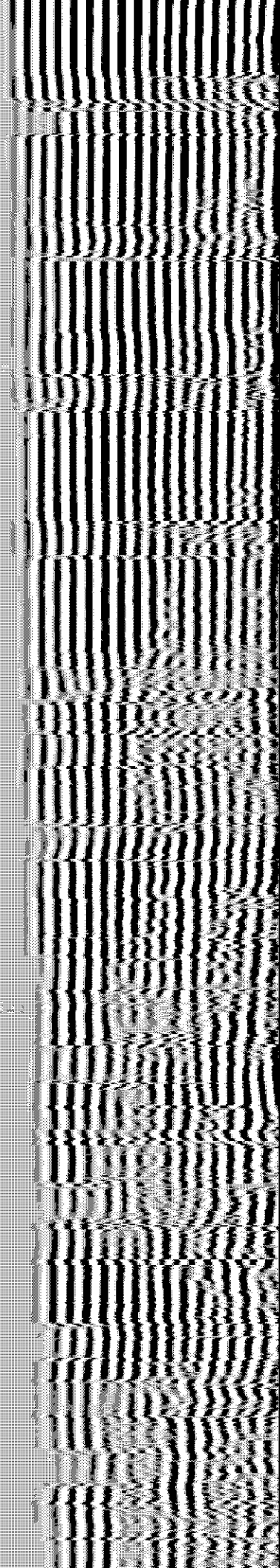
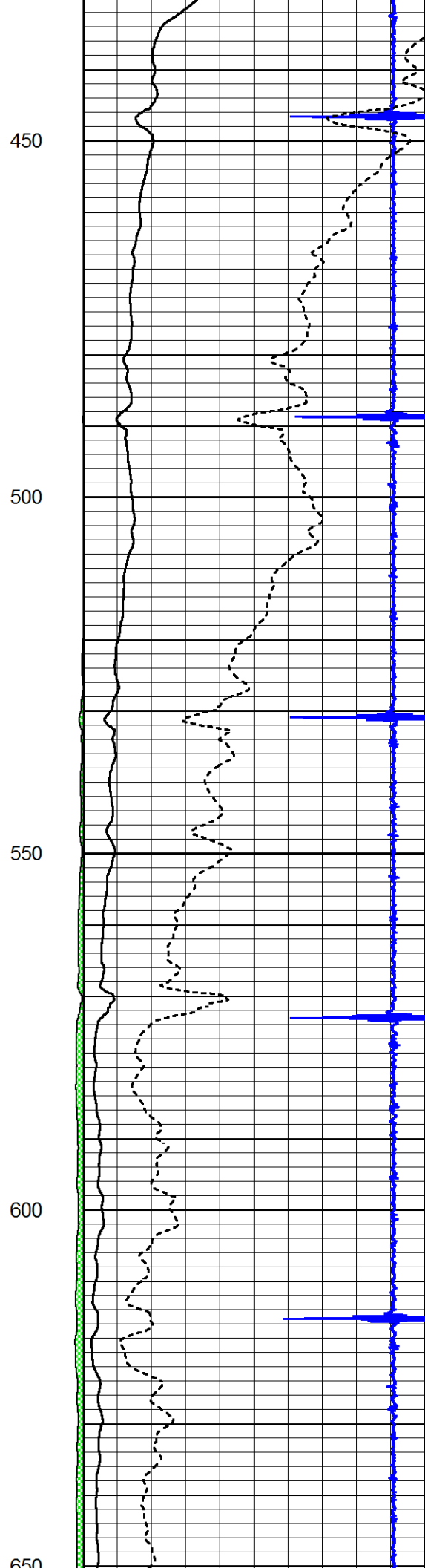
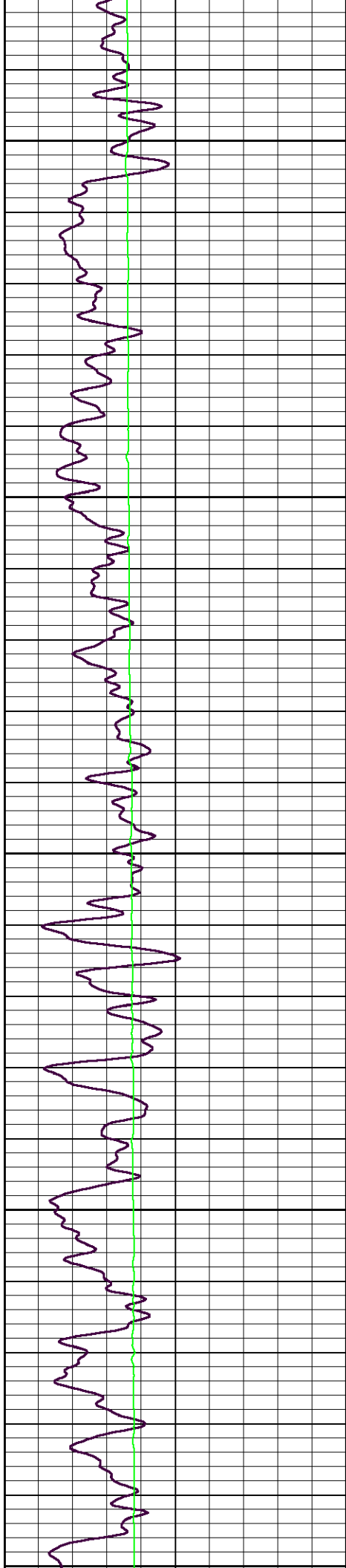


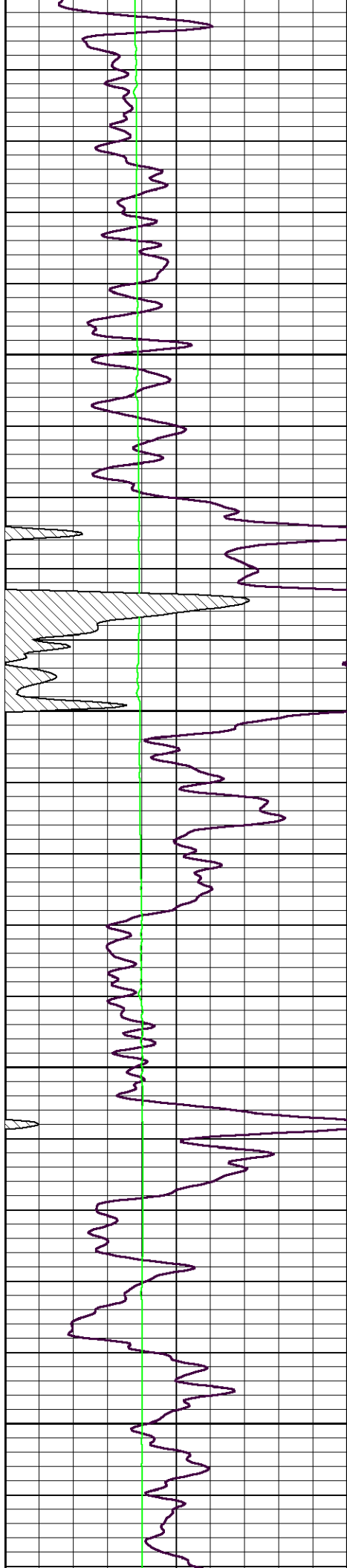
# Main Pass

Database File cross\_bar\_burkett\_b\_14.db  
 Dataset Pathname grcbl/pass4  
 Presentation Format excel  
 Dataset Creation Fri Jan 04 15:18:49 2019  
 Charted by Depth in Feet scaled 1:240

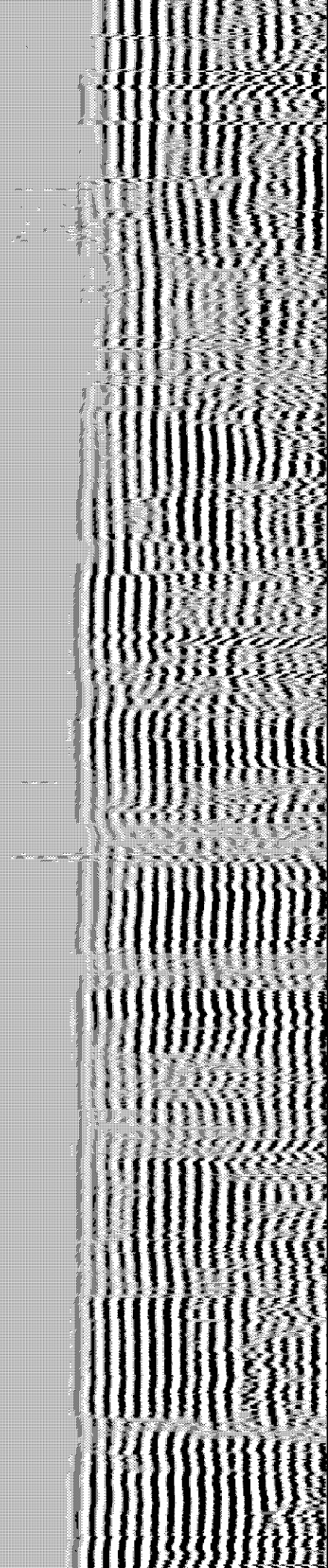
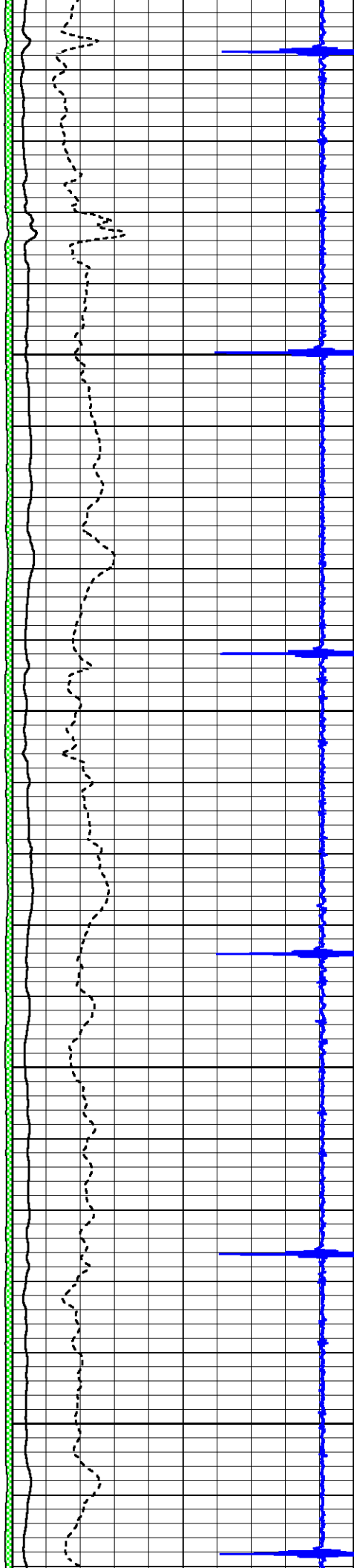
0	Gamma Ray (GAPI)	150	amp3ft	3	Casing Collars	-0.3	200	Variable Density (usec)	1200
0	LTEN (lb)	2000	(mV)		Amplitude				
			-100 10		Amplified Amplitude (mV)				

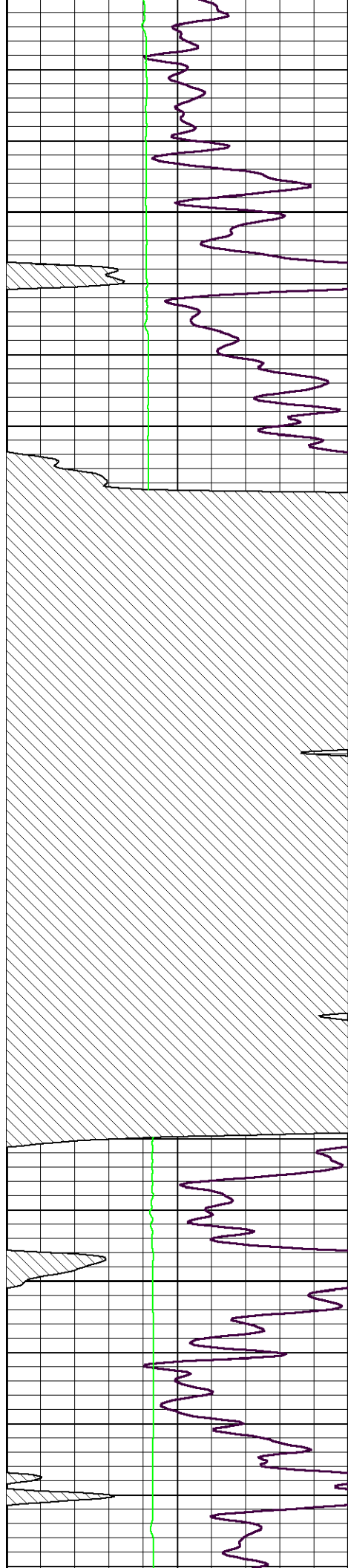






650  
700  
750  
800  
850



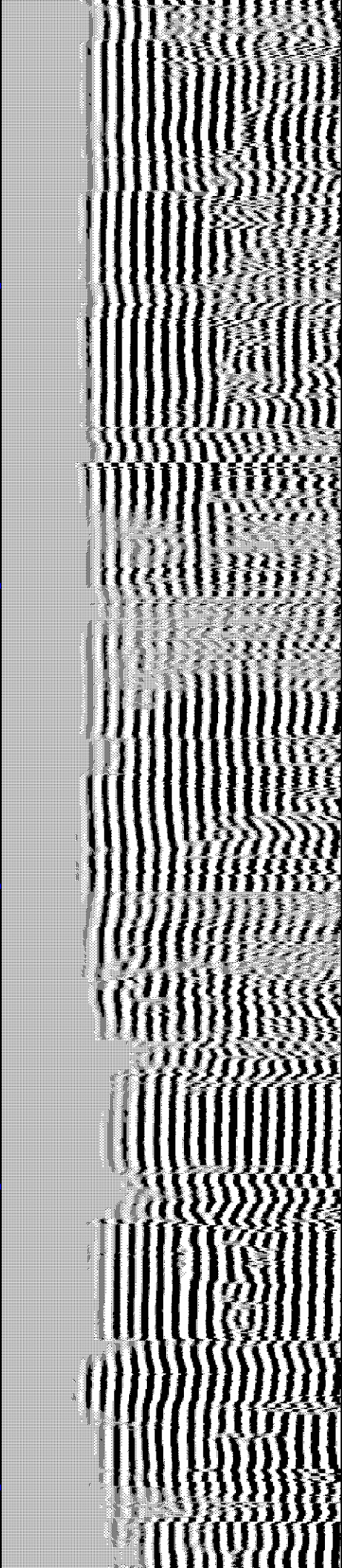
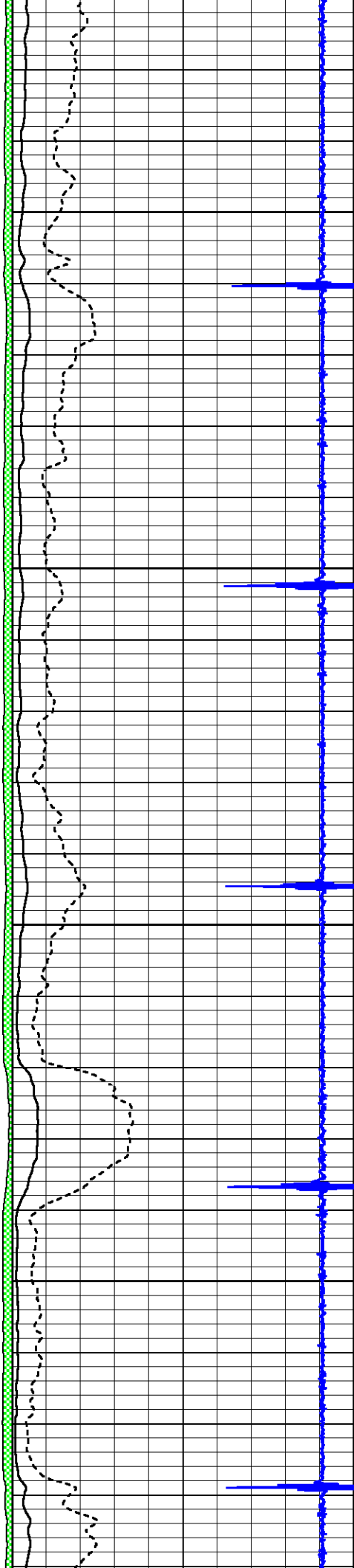


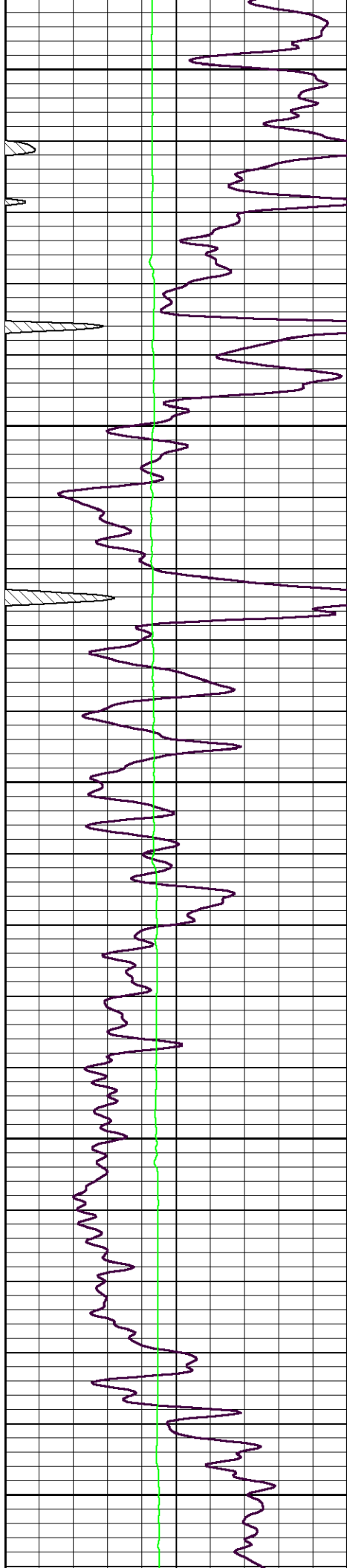
900

950

1000

1050





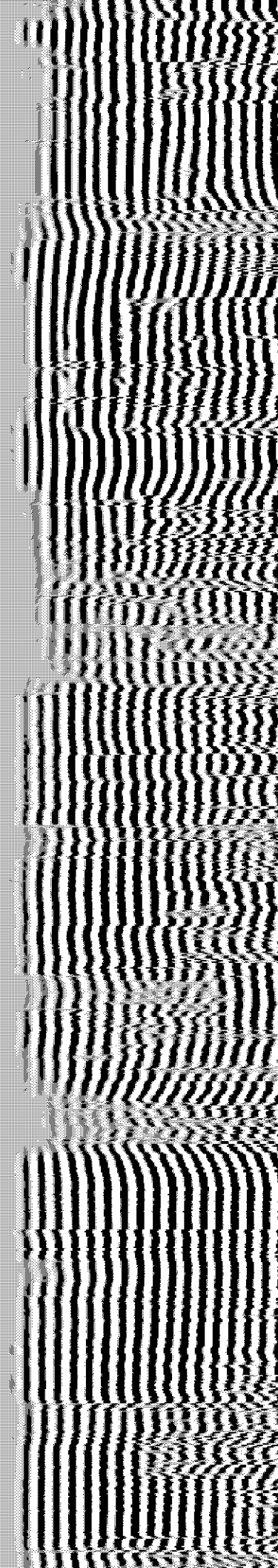
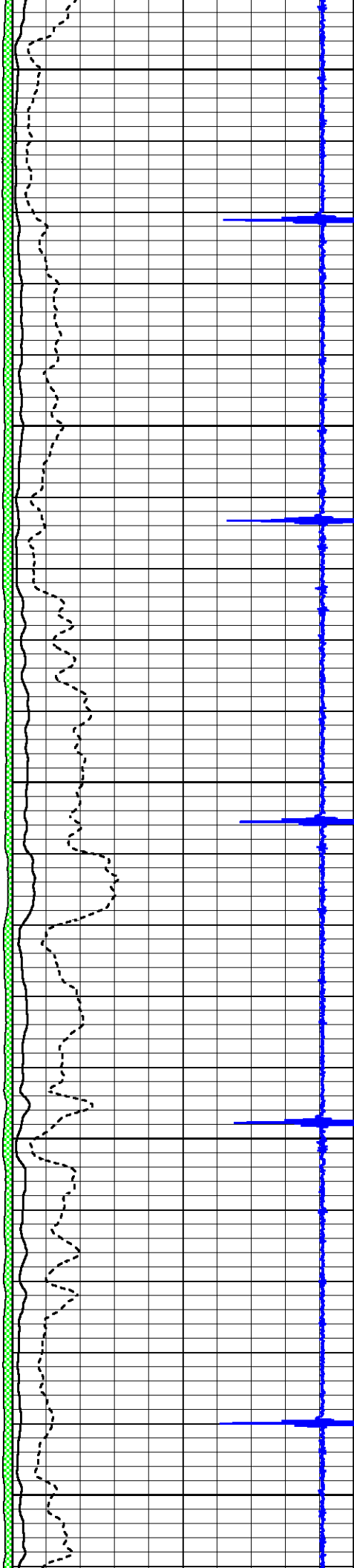
1100

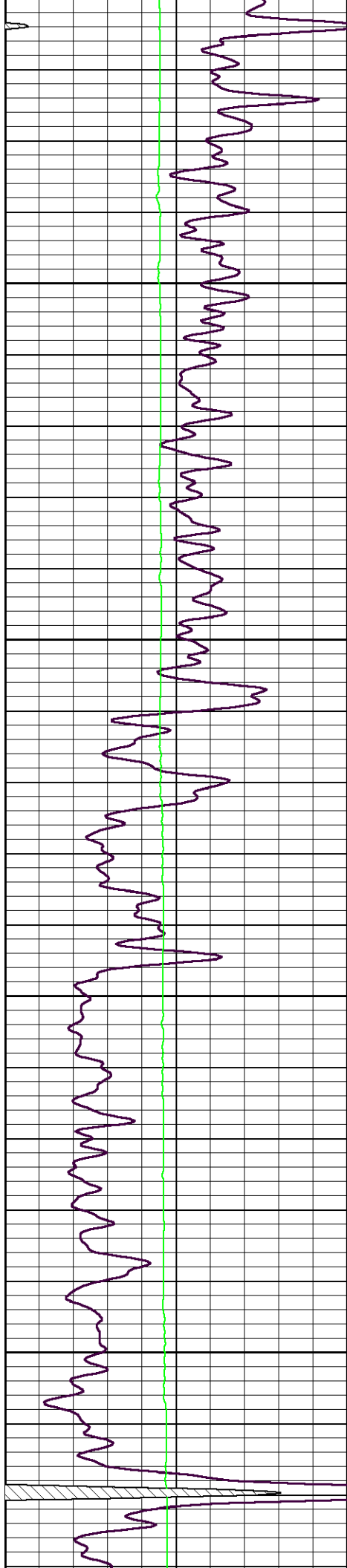
1150

1200

1250

1300



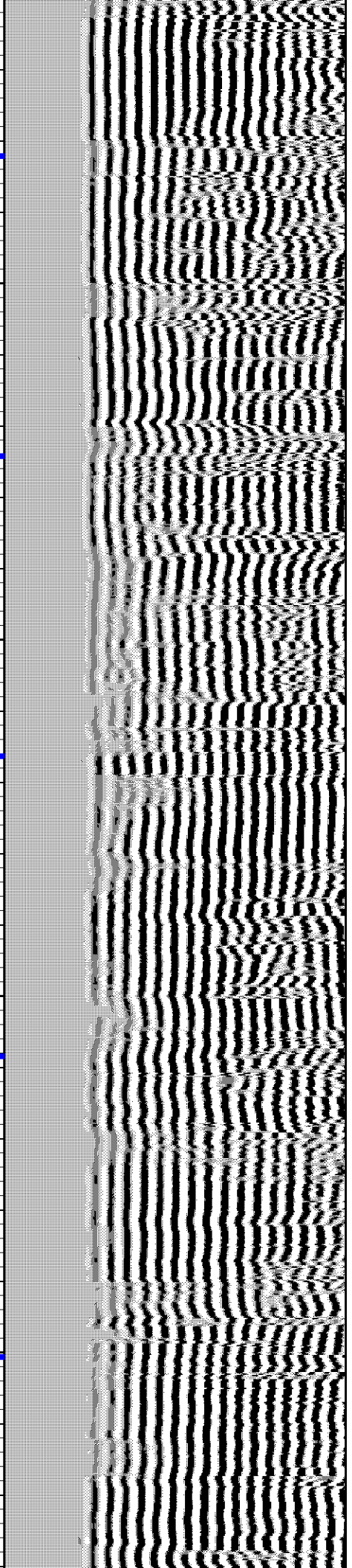
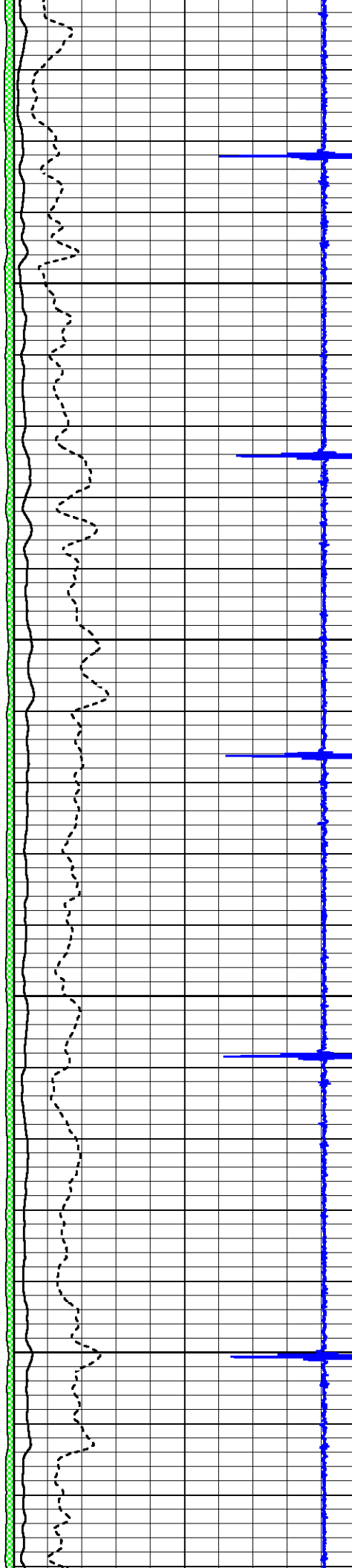


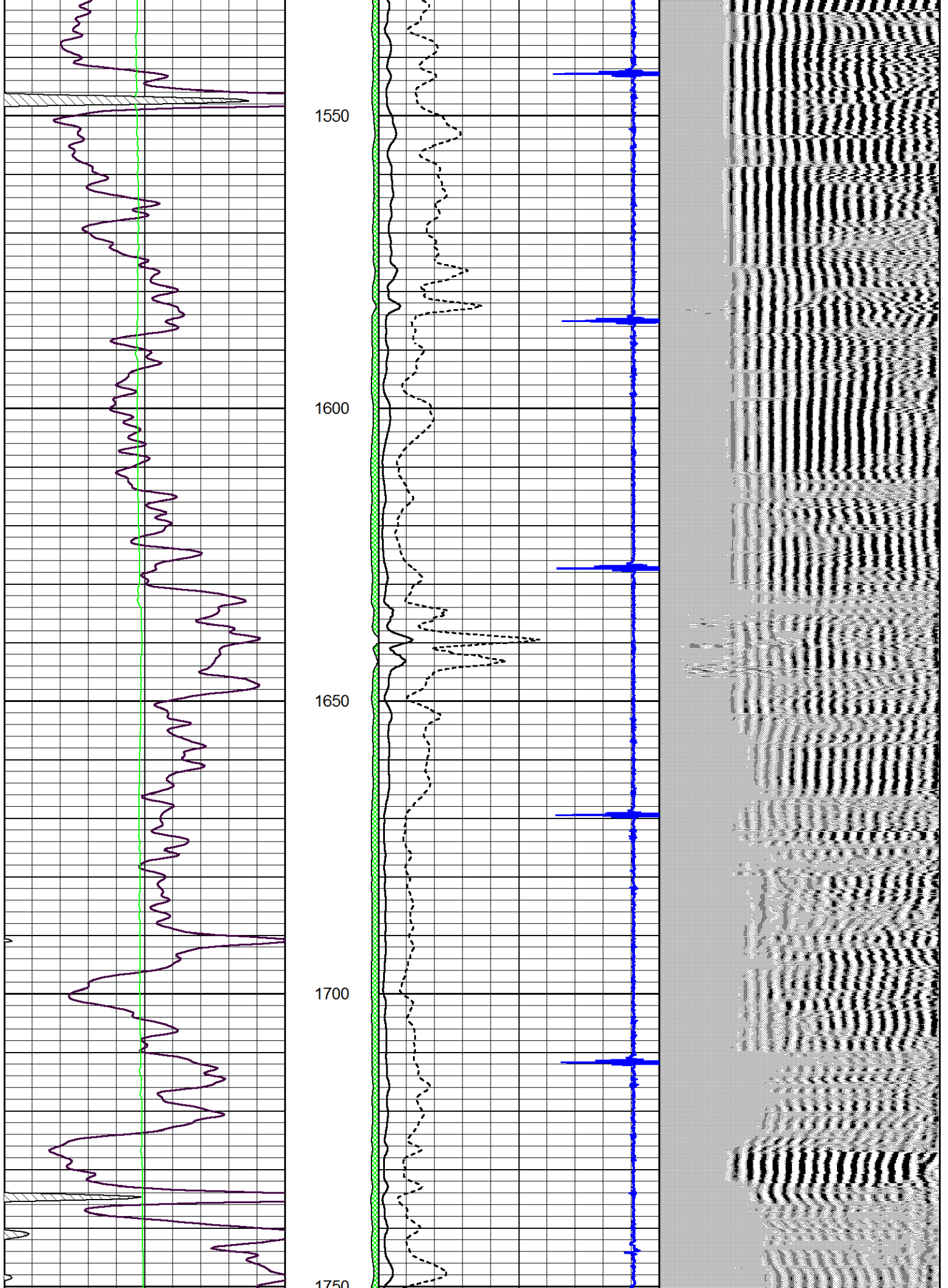
1350

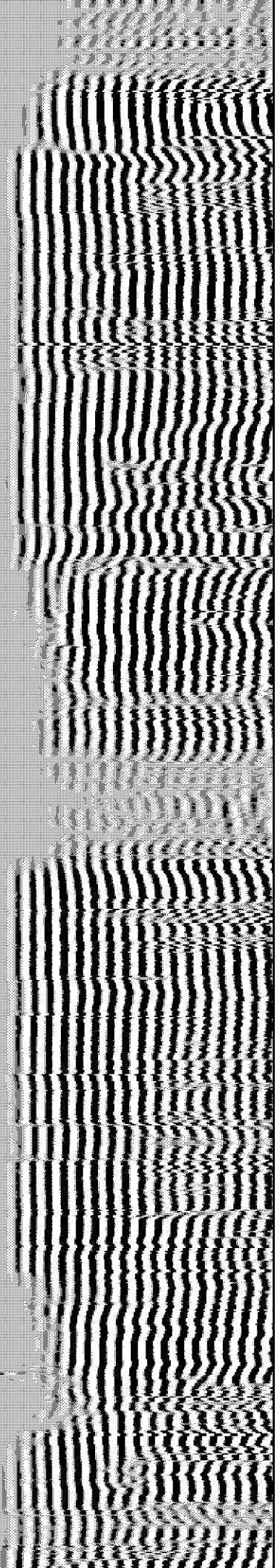
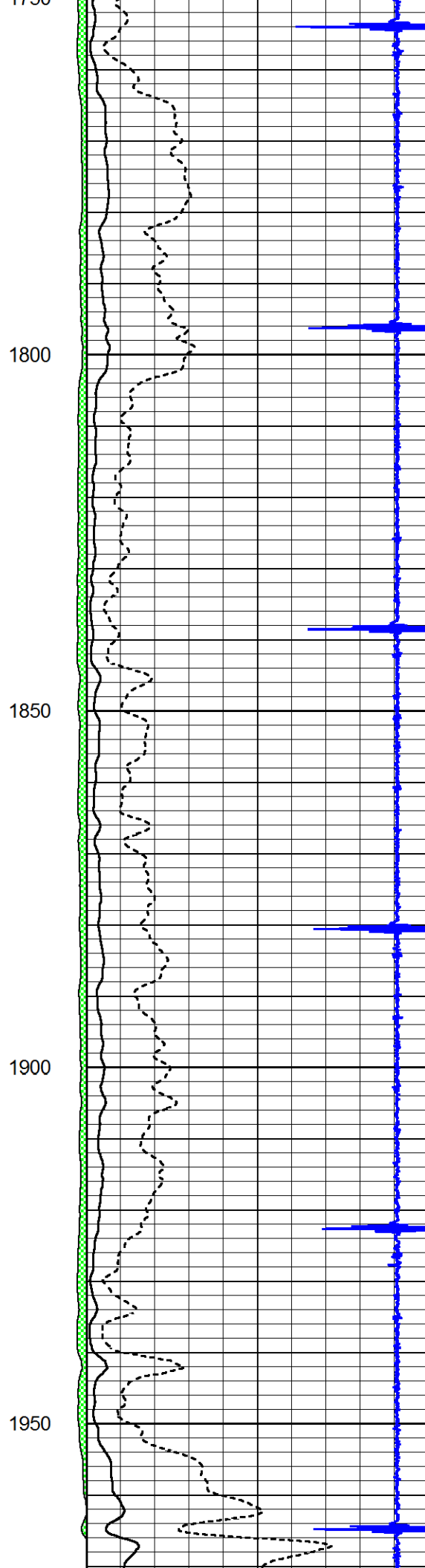
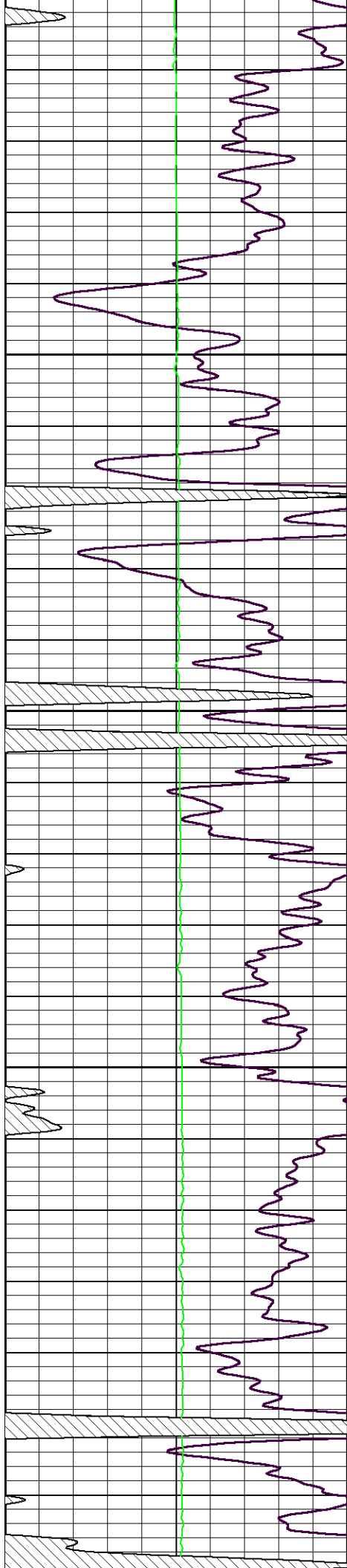
1400

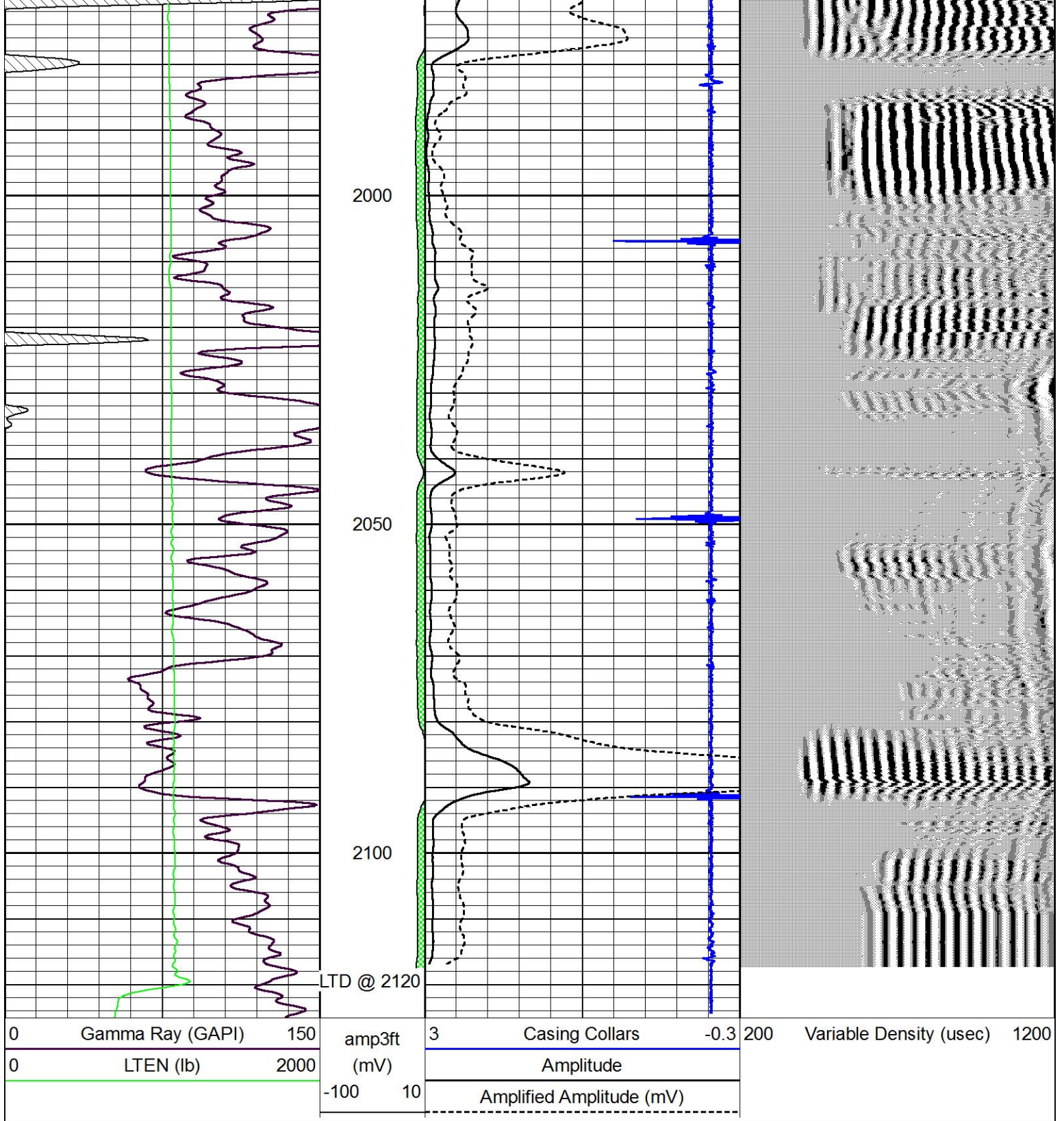
1450

1500









# Repeat Section

Database File cross\_bar\_burkett\_b\_14.db  
 Dataset Pathname grcbl/pass3  
 Presentation Format excel  
 Dataset Creation Fri Jan 04 15:14:07 2019  
 Charted by Depth in Feet scaled 1:240

