



SONIC LOG

Company I.A. OPERATING, INC.
Well STRATHMAN - McKEE #10-1
Field HEINEN
County NEMAHA
State KANSAS

Company I.A. OPERATING, INC.
Well STRATHMAN - McKEE #10-1
Field HEINEN
County NEMAHA
State KANSAS

Location: AP# : 15-131-20247-0000
140' FNL & 1070' FVL
NE - NE - NW - NW
Permanent Datum GROUND LEVEL Elevation 1351
Log Measured From KELLY BUSHING 9' A.G.L.
Drilling Measured From KELLY BUSHING
SEC 10 TWP 5S RGE 13E
Other Services
CDL/CNL/PE
DIL/MEL
Elevation
K.B. 1360
D.F. 1358
G.L. 1351

Date	2/18/19
Run Number	TWO
Depth Driller	3900
Depth Logger	3901
Bottom Logged Interval	3893
Top Log Interval	200
Casing Driller	8 5/8" @ 265'
Casing Logger	265
Bit Size	7 7/8"
Type Fluid in Hole	CHEMICAL MUD
Density / Viscosity	9.4/62
pH / Fluid Loss	9.07/2
Source of Sample	FLOWLINE
Rim @ Meas. Temp	1.90 @ 60F
Rmf @ Meas. Temp	1.43 @ 60F
Rmc @ Meas. Temp	2.28 @ 60F
Source of Rmf / Rmc	MEASUREMENT
Rim @ BHT	.991 @ 115F
Time Circulation Stopped	4.5 HOURS
Time Logger on Bottom	11:00 P.M.
Maximum Recorded Temperature	115F
Equipment Number	922339
Location	HAYS, KANSAS
Recorded By	JEFF LUEBBERS
Witnessed By	JEFF LAWLER

<<< Fold Here >>>

All interpretations are opinions based on inferences from electrical or other measurements and we cannot and do not guarantee the accuracy or correctness of any interpretation, and we shall not, except in the case of gross or willful negligence on our part, be liable or responsible for any loss, costs, damages, or expenses incurred or sustained by anyone resulting from any interpretation made by any of our officers, agents or employees. These interpretations are also subject to our general terms and conditions set out in our current Price Schedule.

Comments

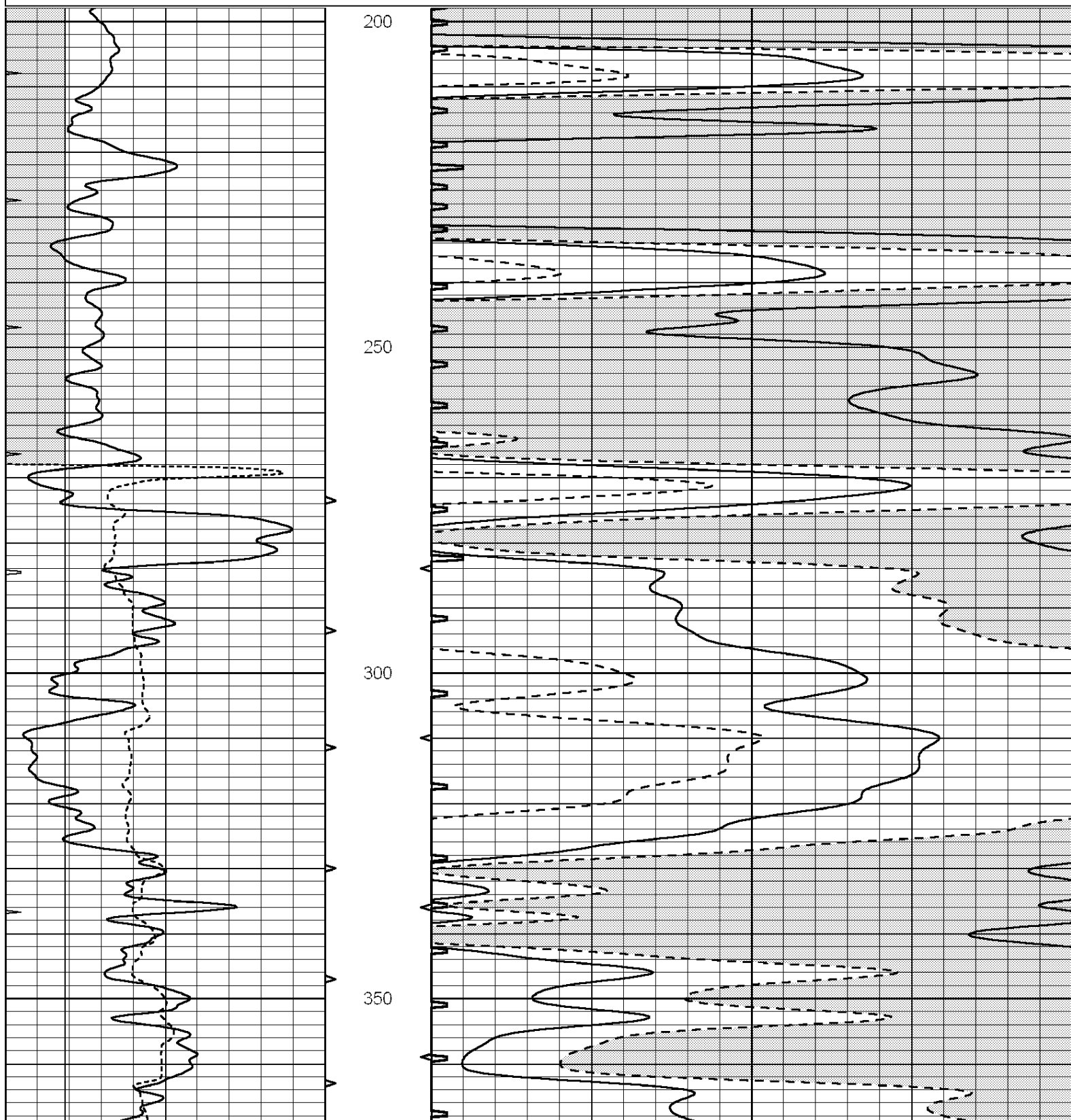
THANK YOU FOR USING ELI WIRELINE HAYS, KANSAS (785) 628-6395
DIRECTIONS
CORNING, KS., 4E. ON HWY 9 TO HWY 62, 1S., 1/4E., S. NTO

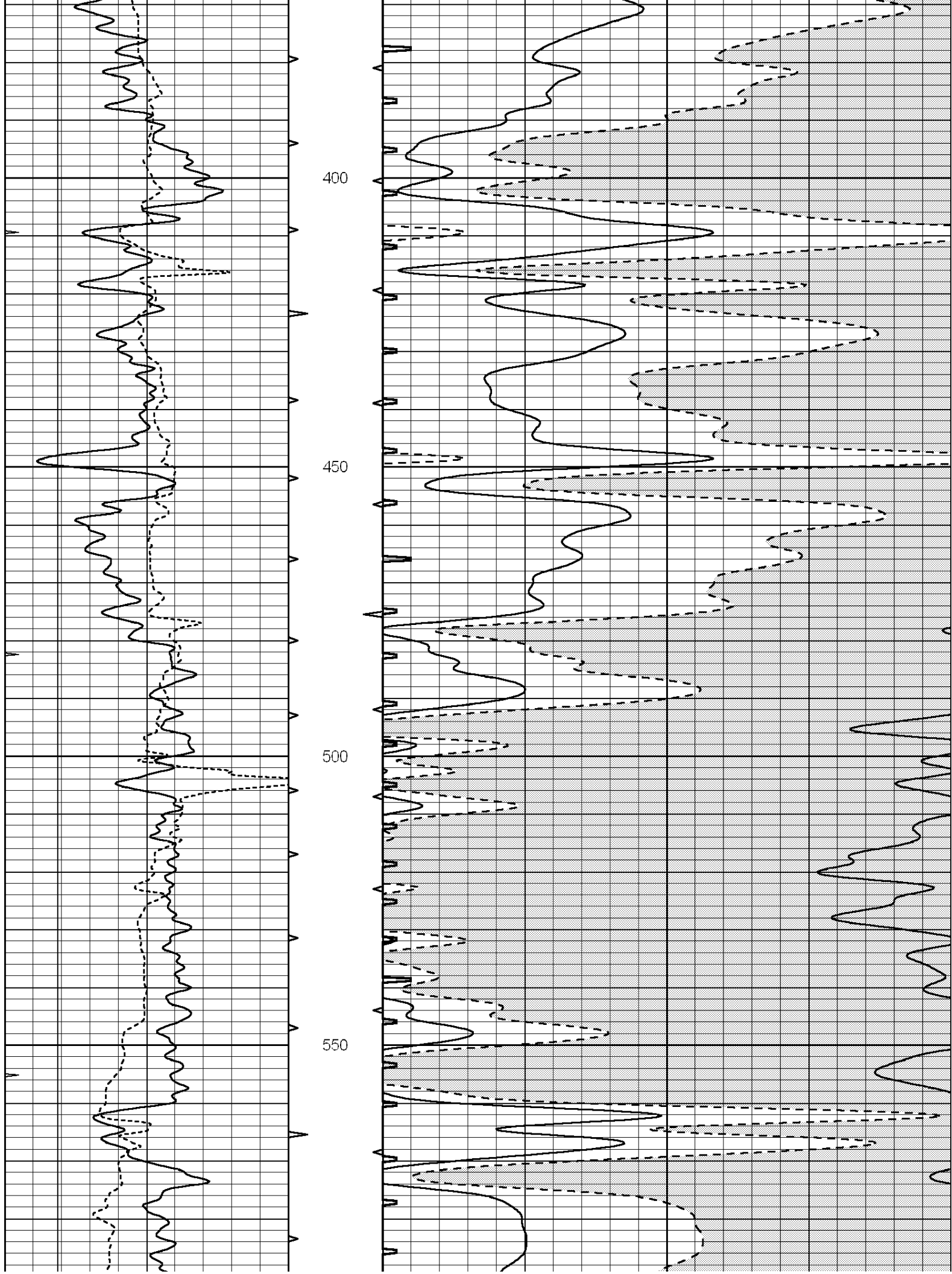


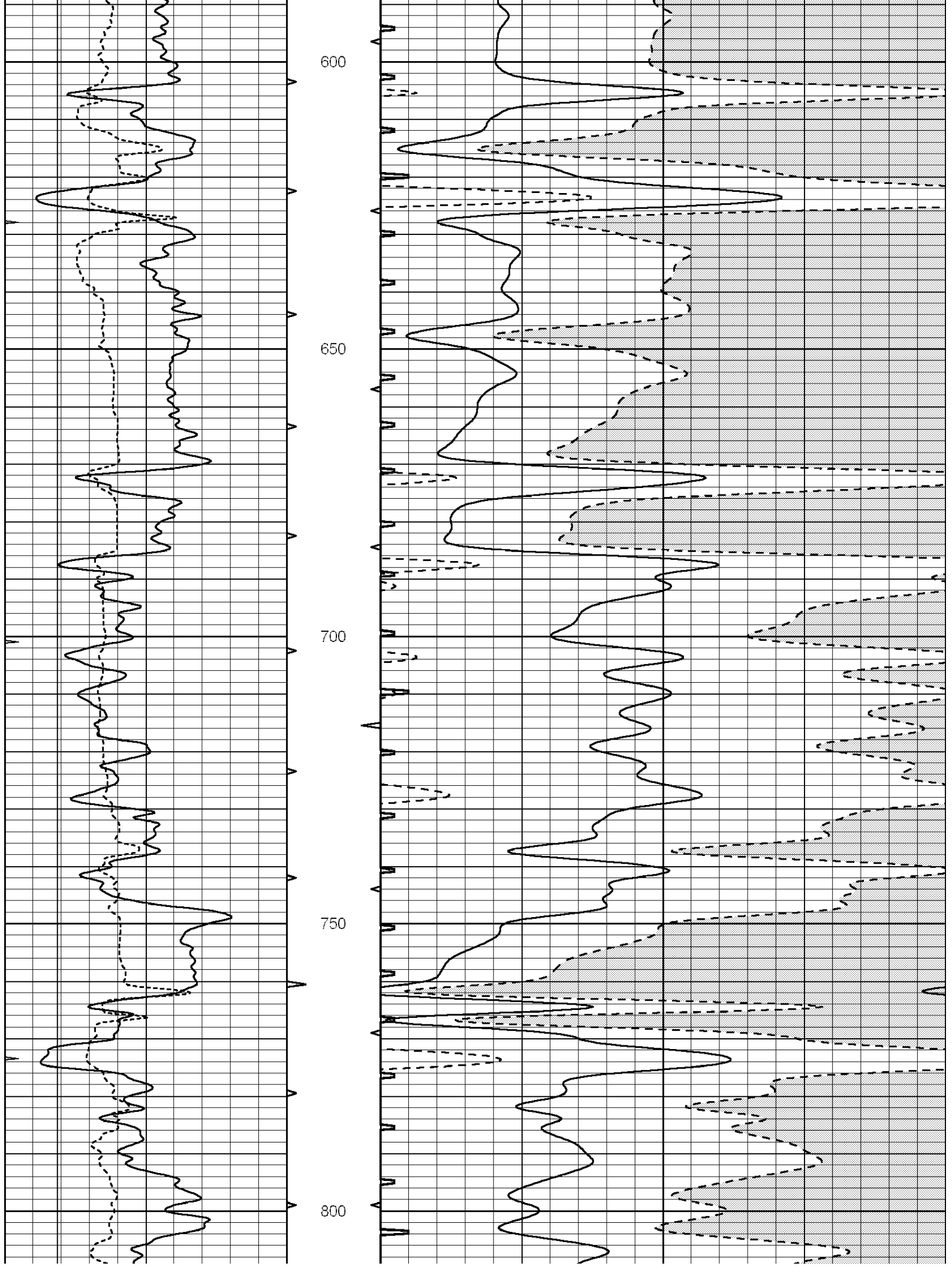
MAIN SECTION

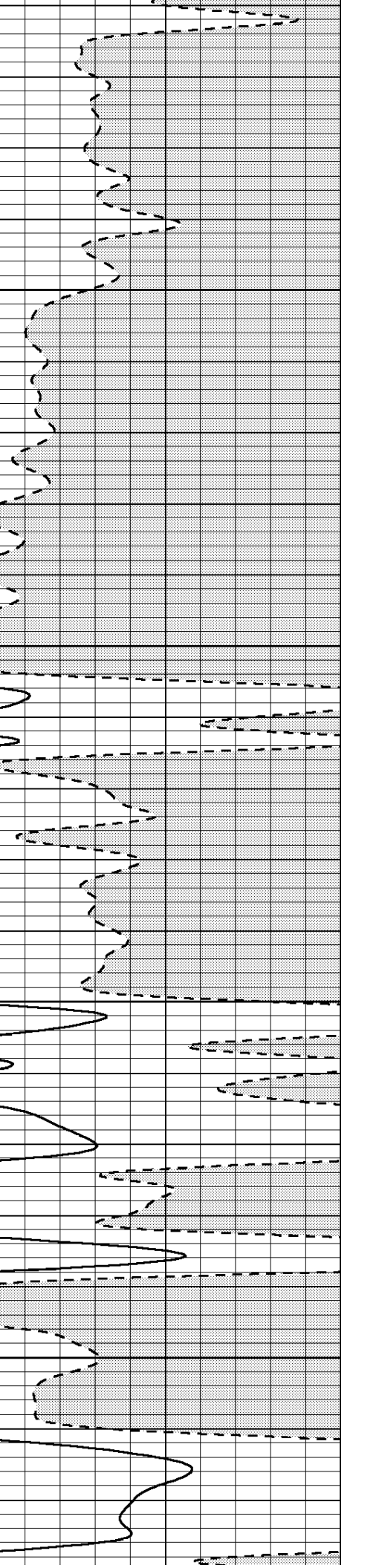
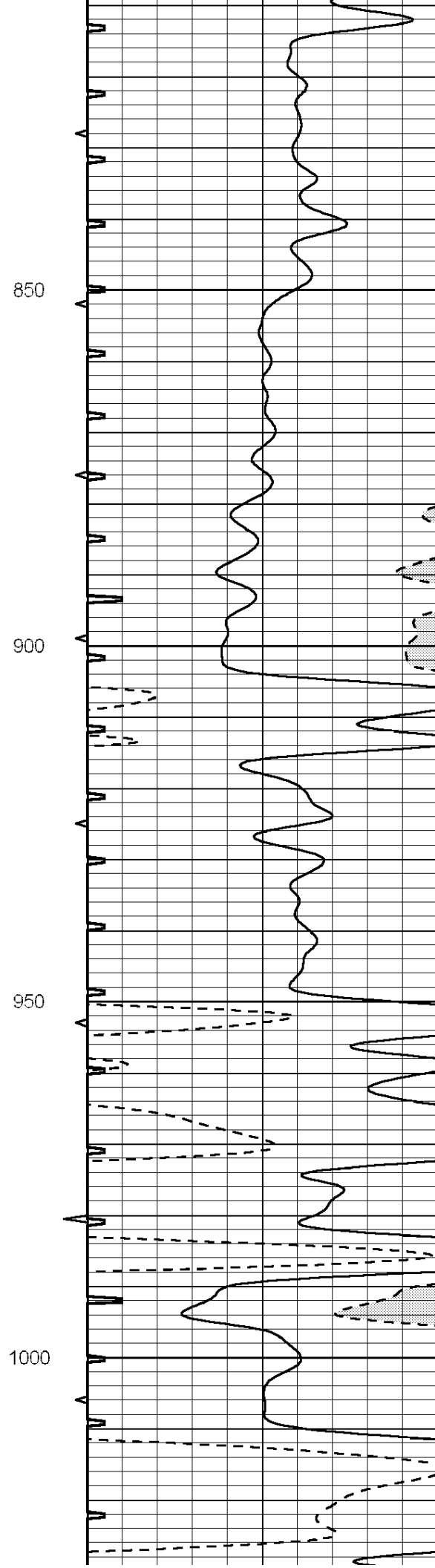
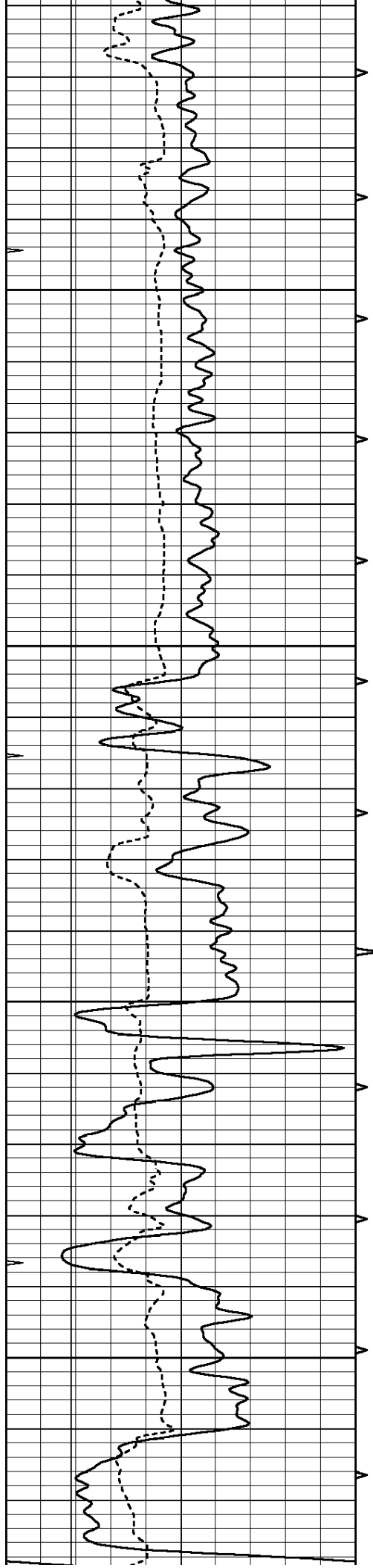
Database File: 3342pe.db
 Dataset Pathname: pass6.11
 Presentation Format: slt
 Dataset Creation: Tue Feb 19 02:42:46 2019
 Charted by: Depth in Feet scaled 1:240

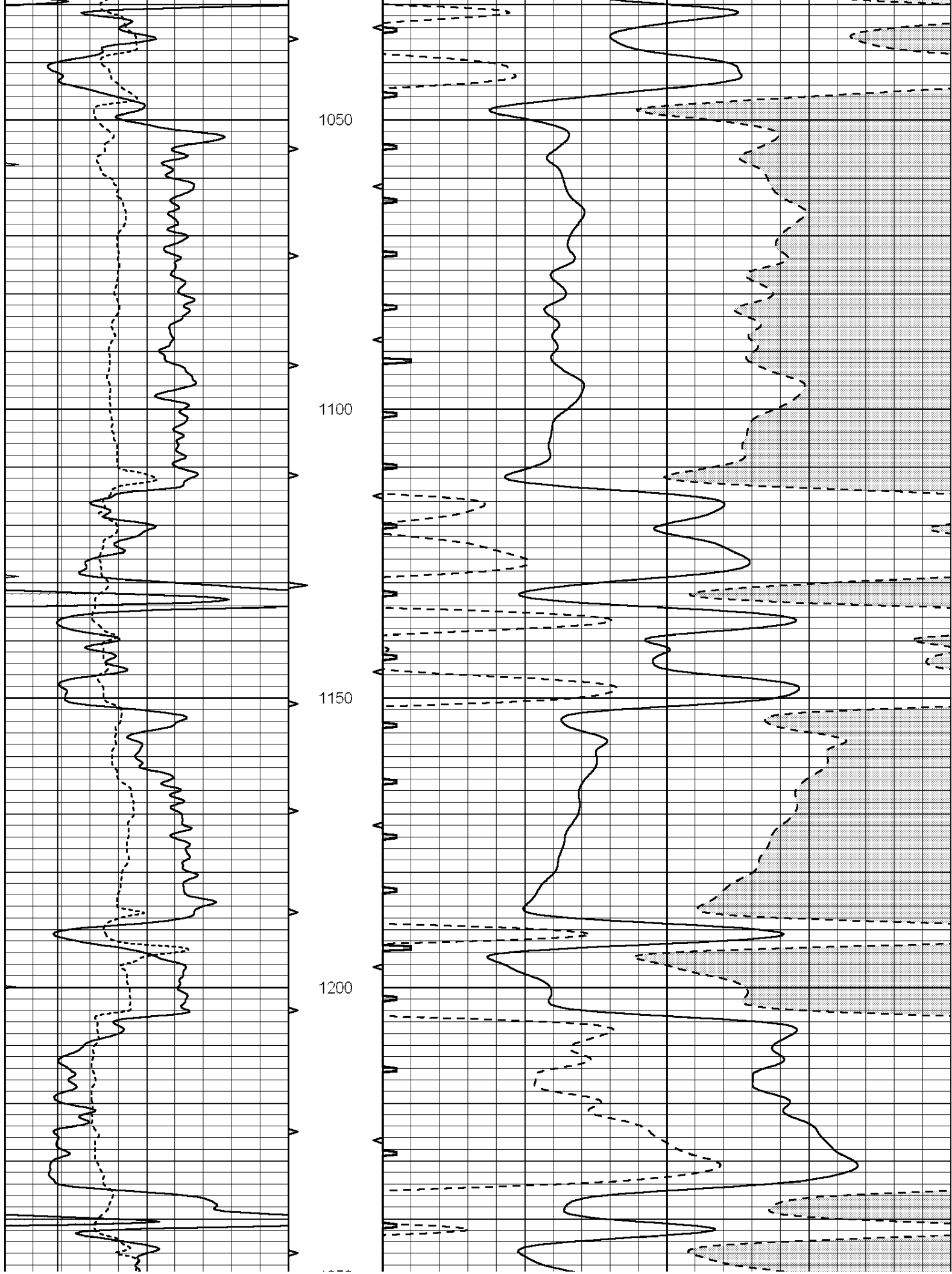
0	GAMMA RAY (GAPI)	150	ABHV	140	DELTA TIME (usec/ft)	40	
6	CALIPER (in)	16	10 (ft3)	0	30	SONIC POROSITY (pu)	-10
6	CALIPER (in)	16	TBHV	0	ITT (msec)	20	
0	MINMK	20	0 (ft3)	10			

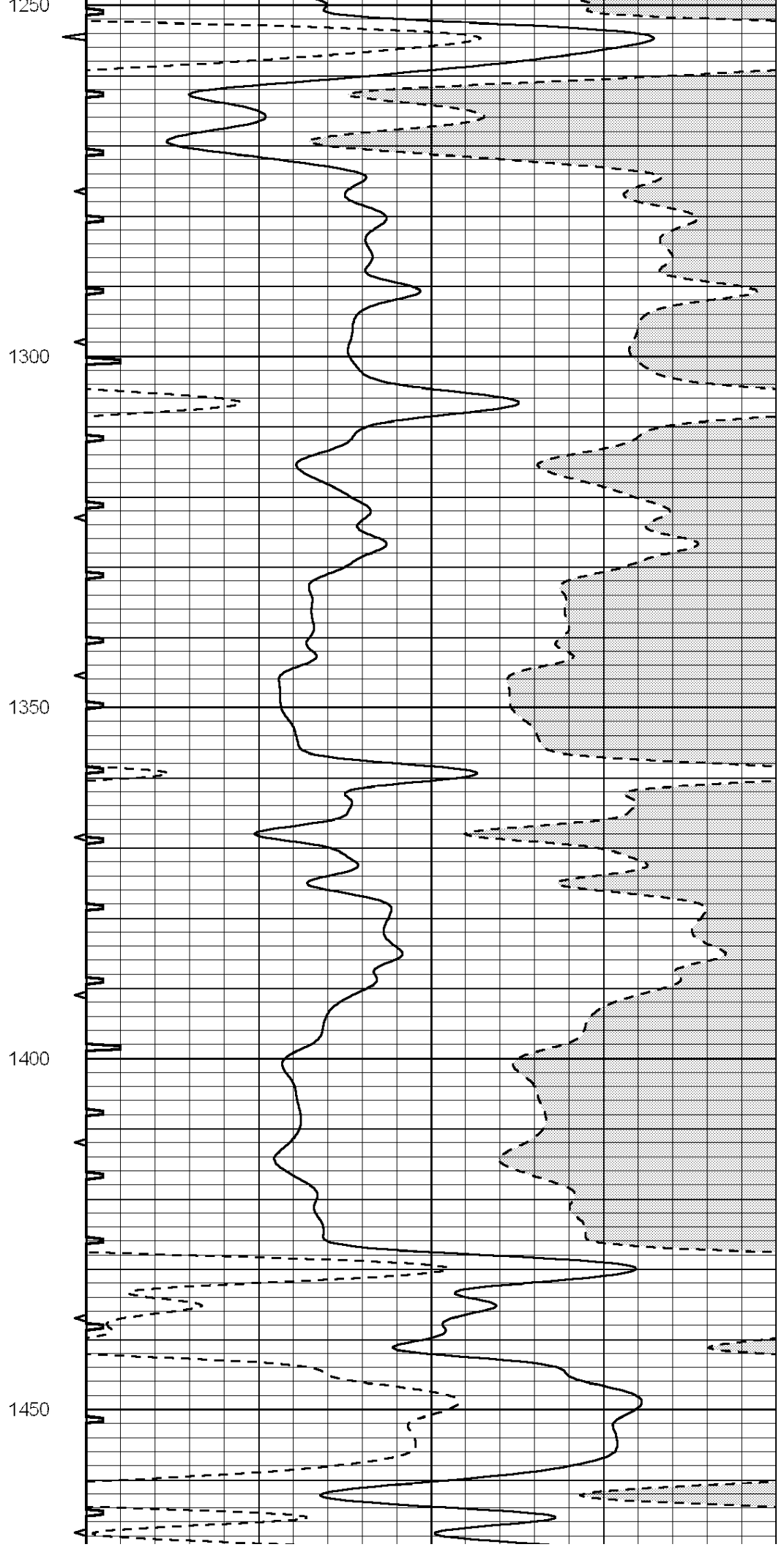
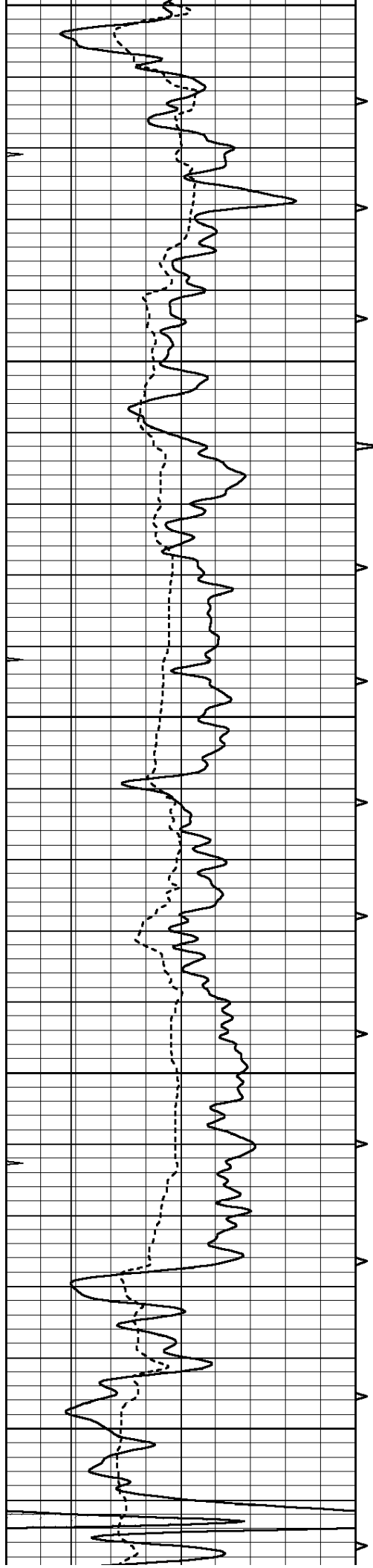


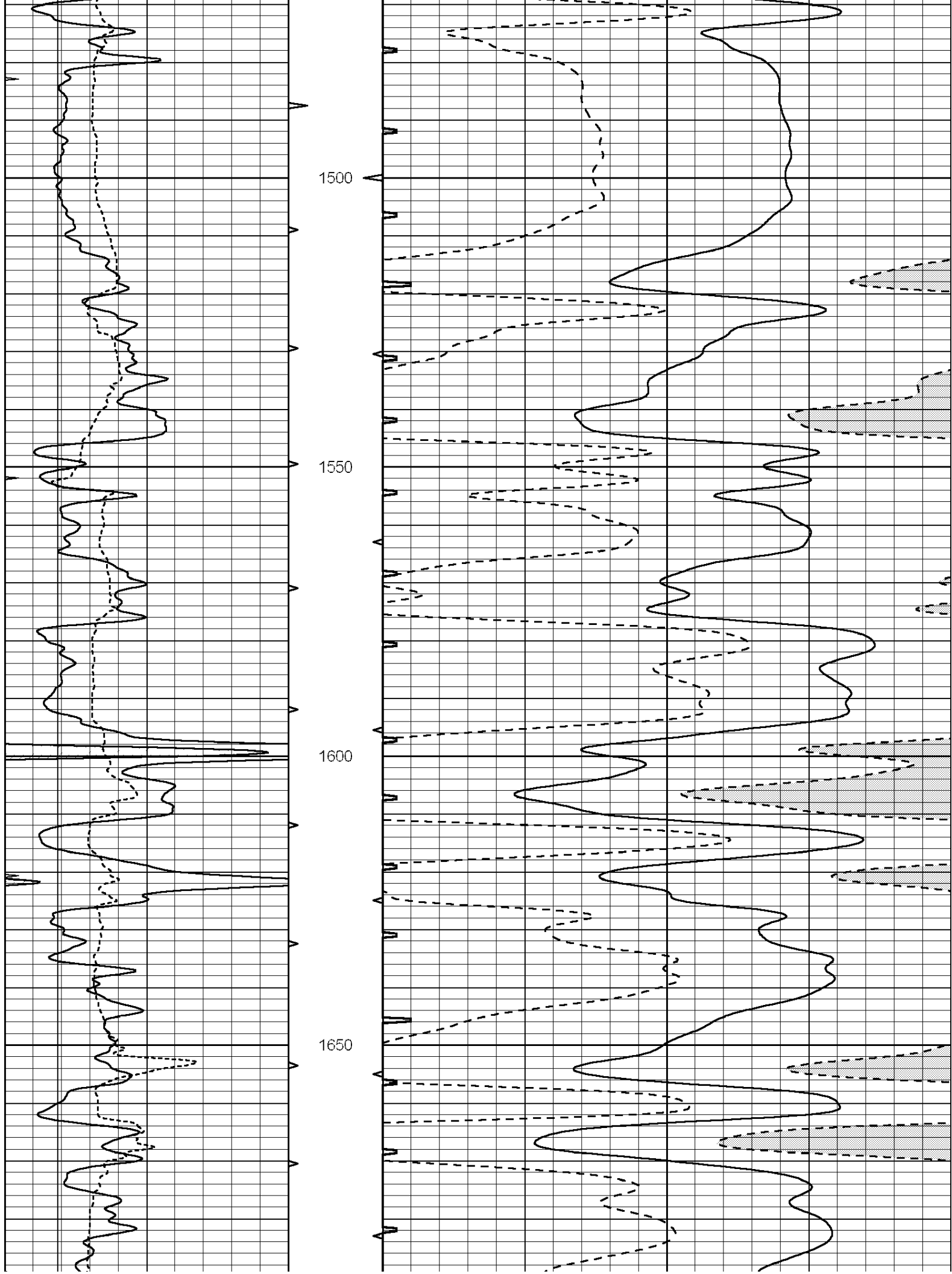


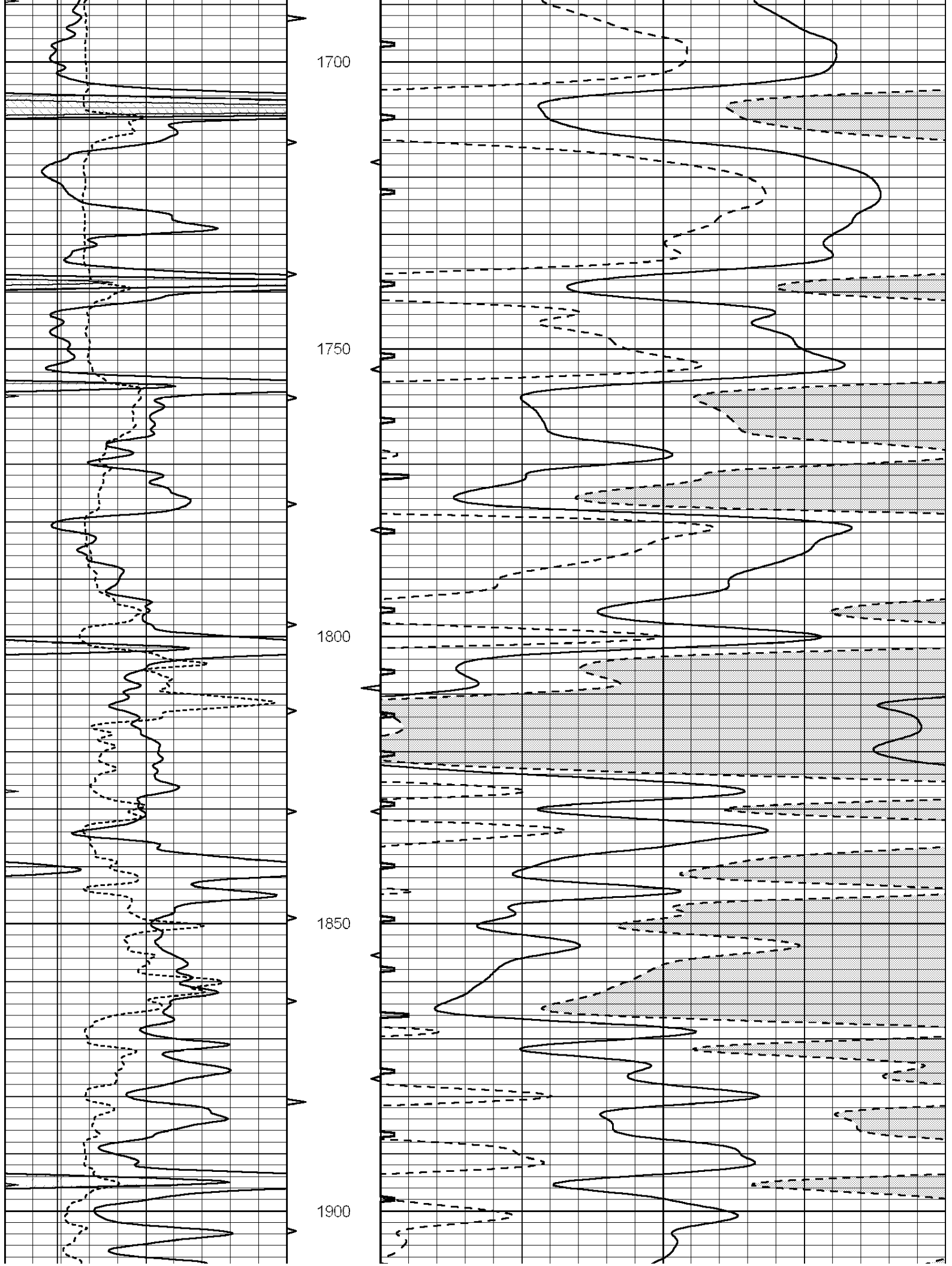


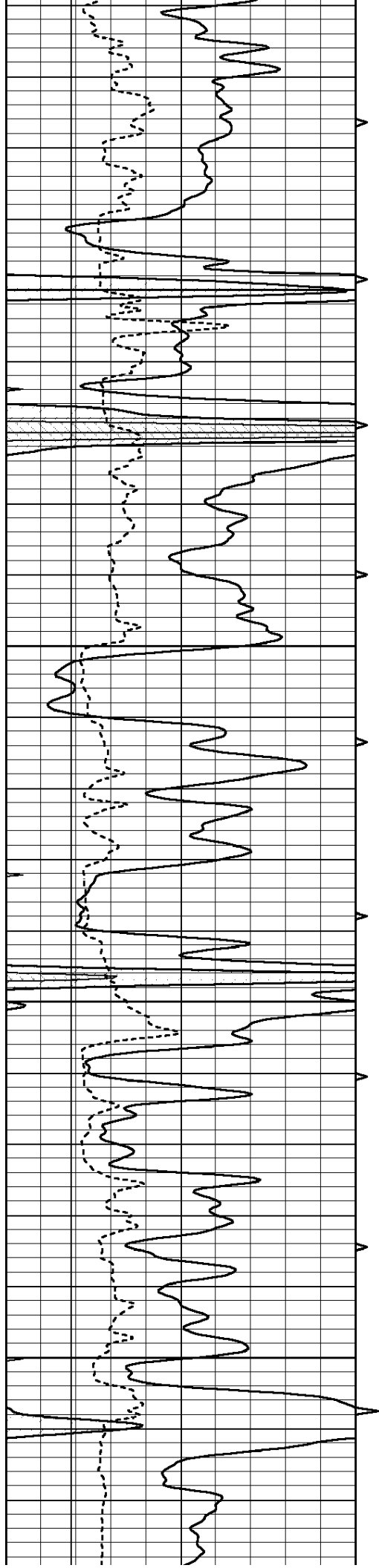










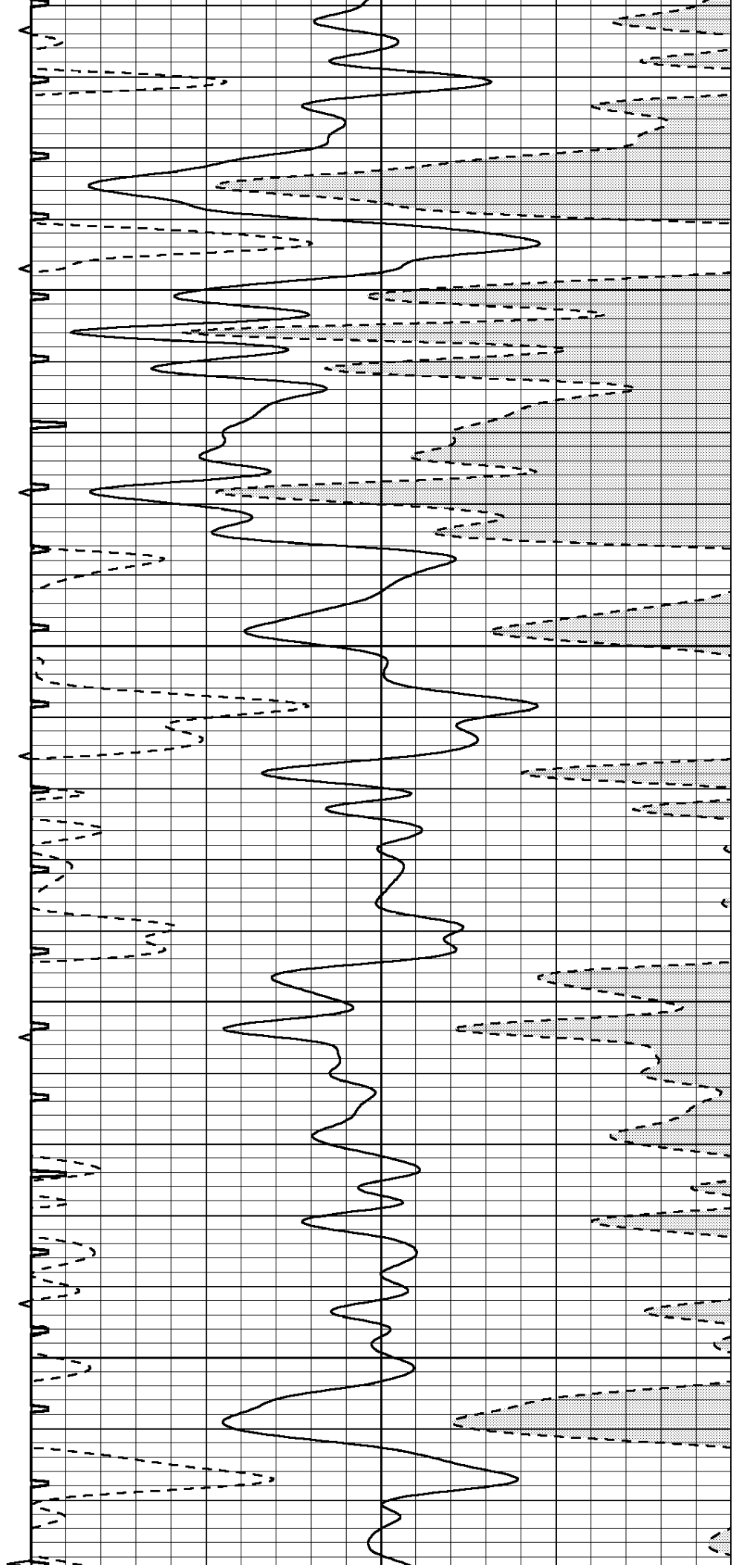


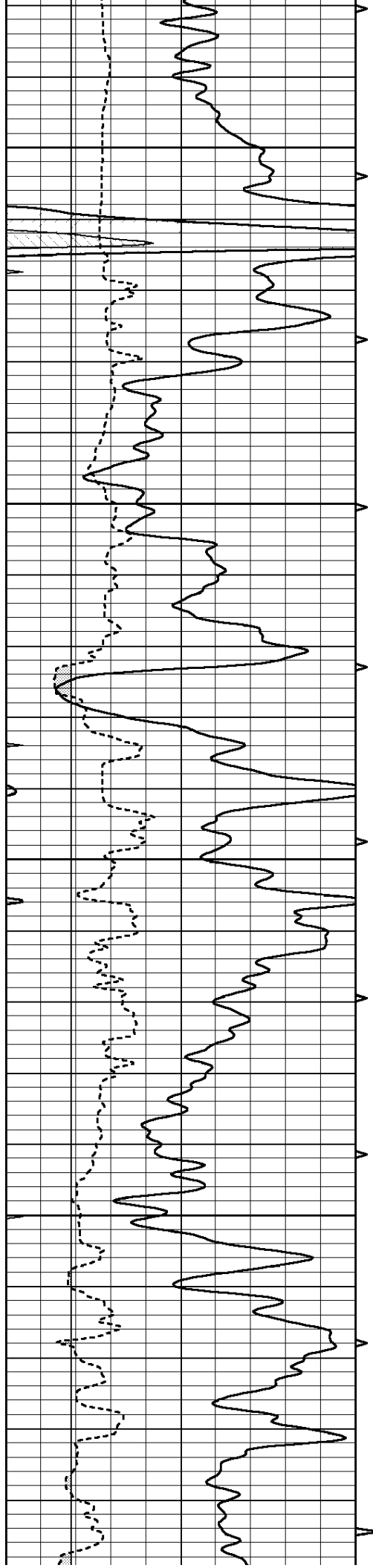
1950

2000

2050

2100



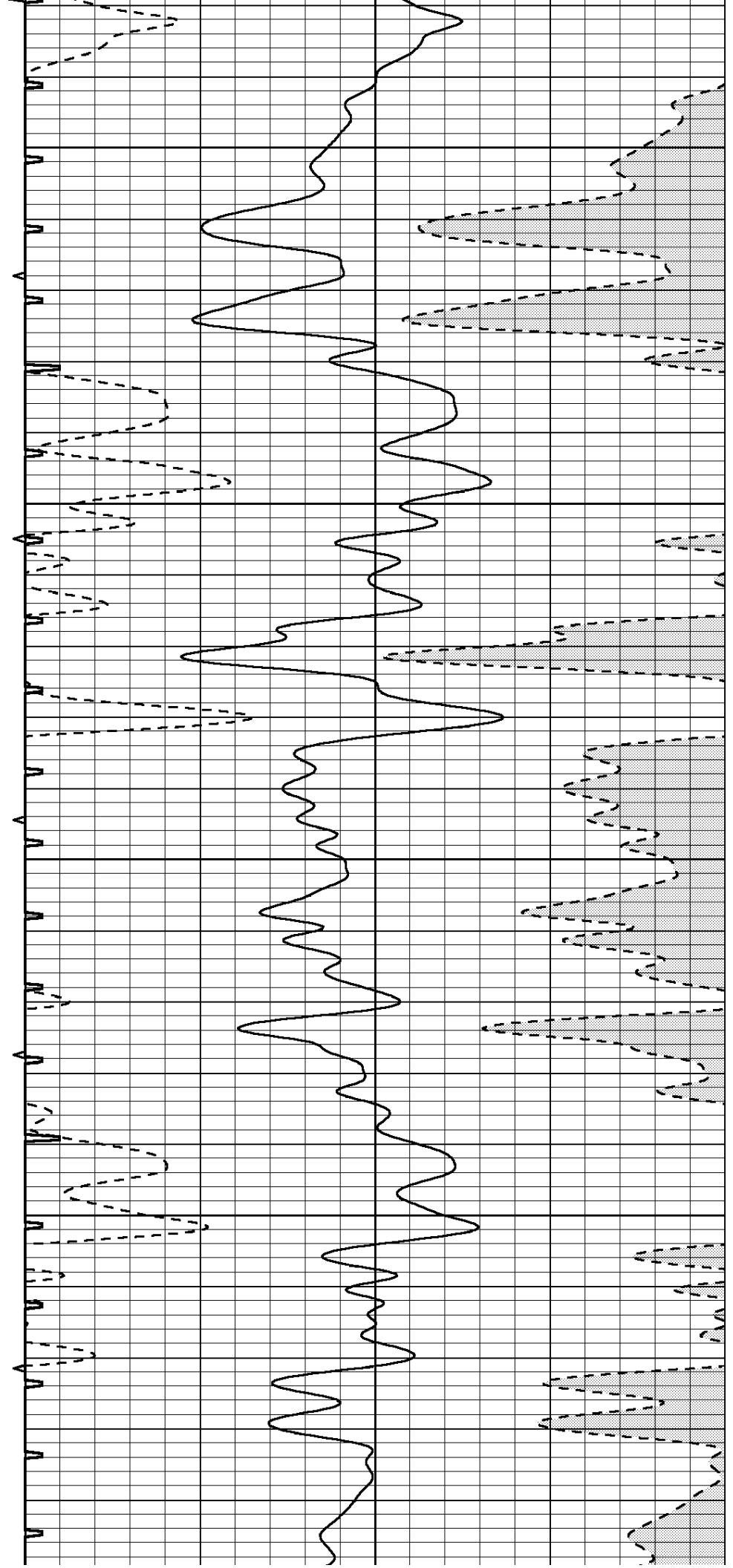


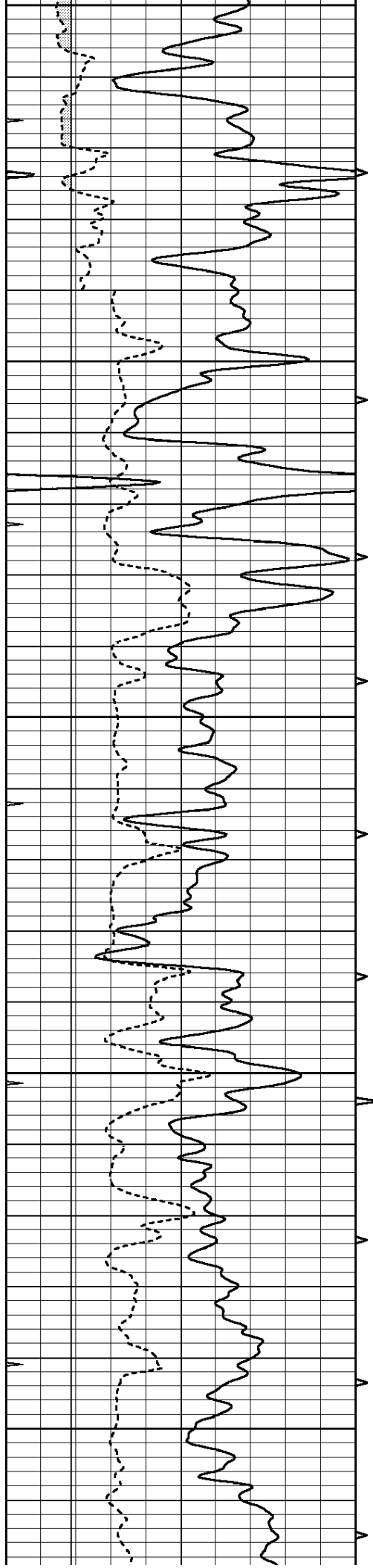
2150

2200

2250

2300





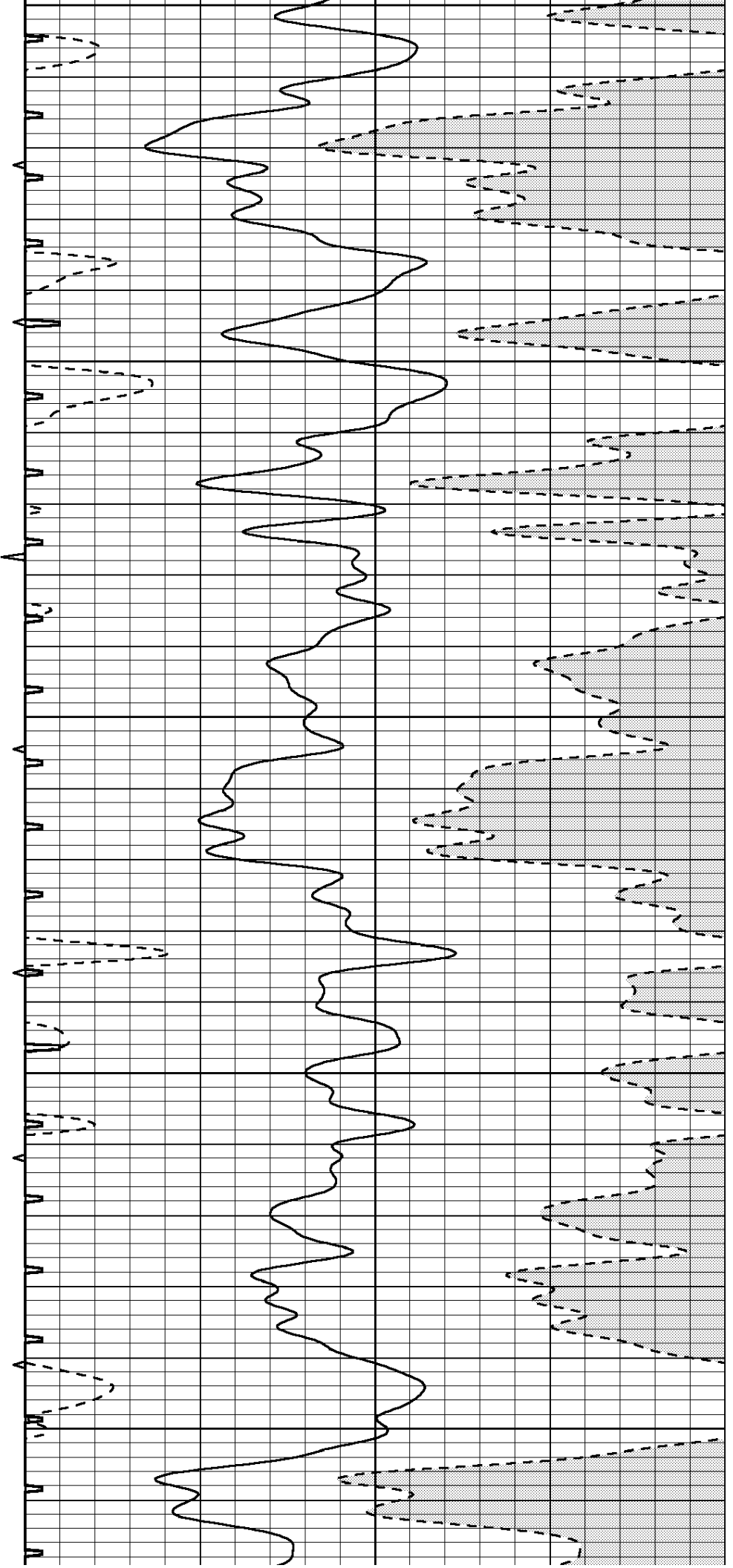
2350

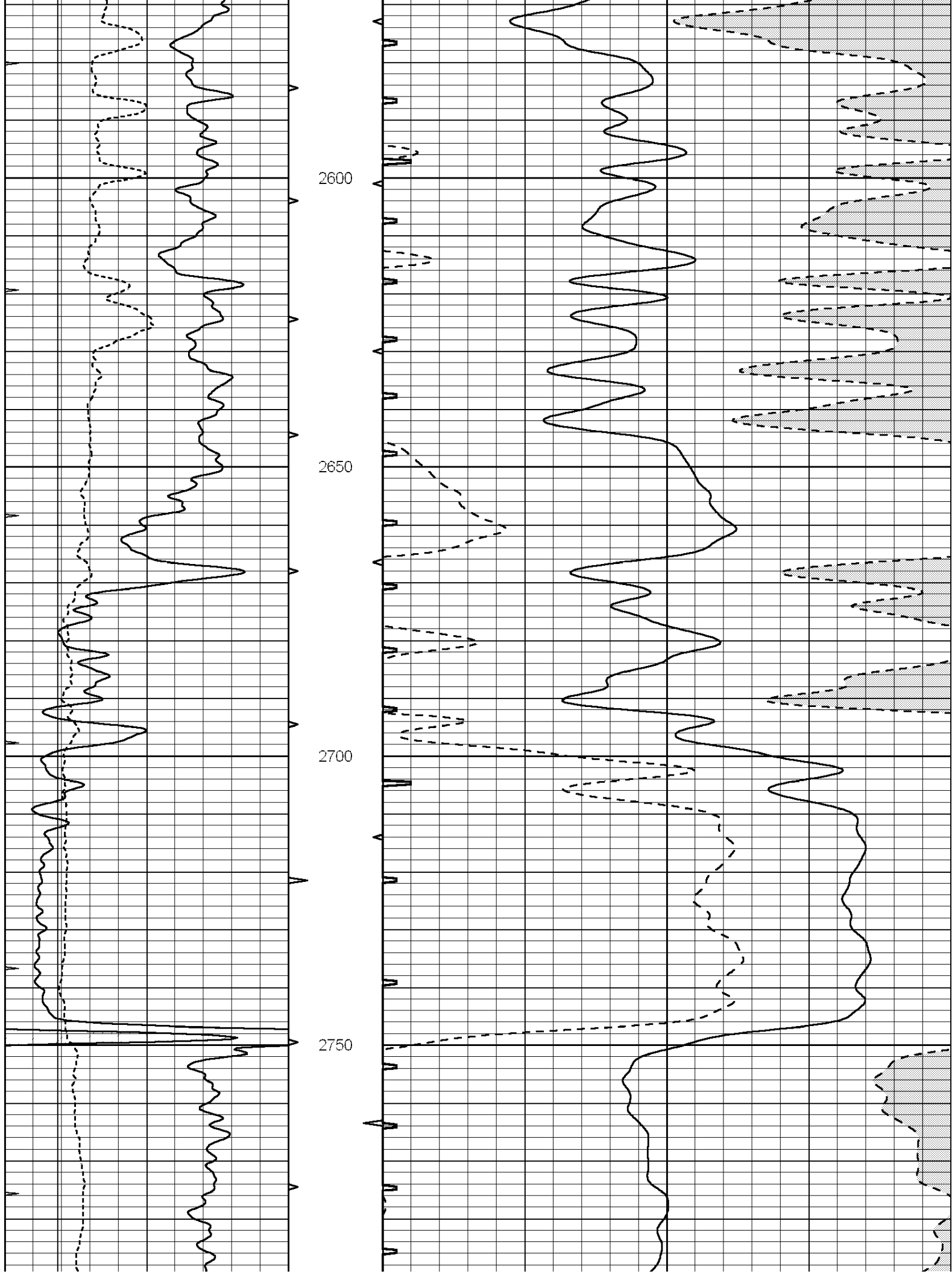
2400

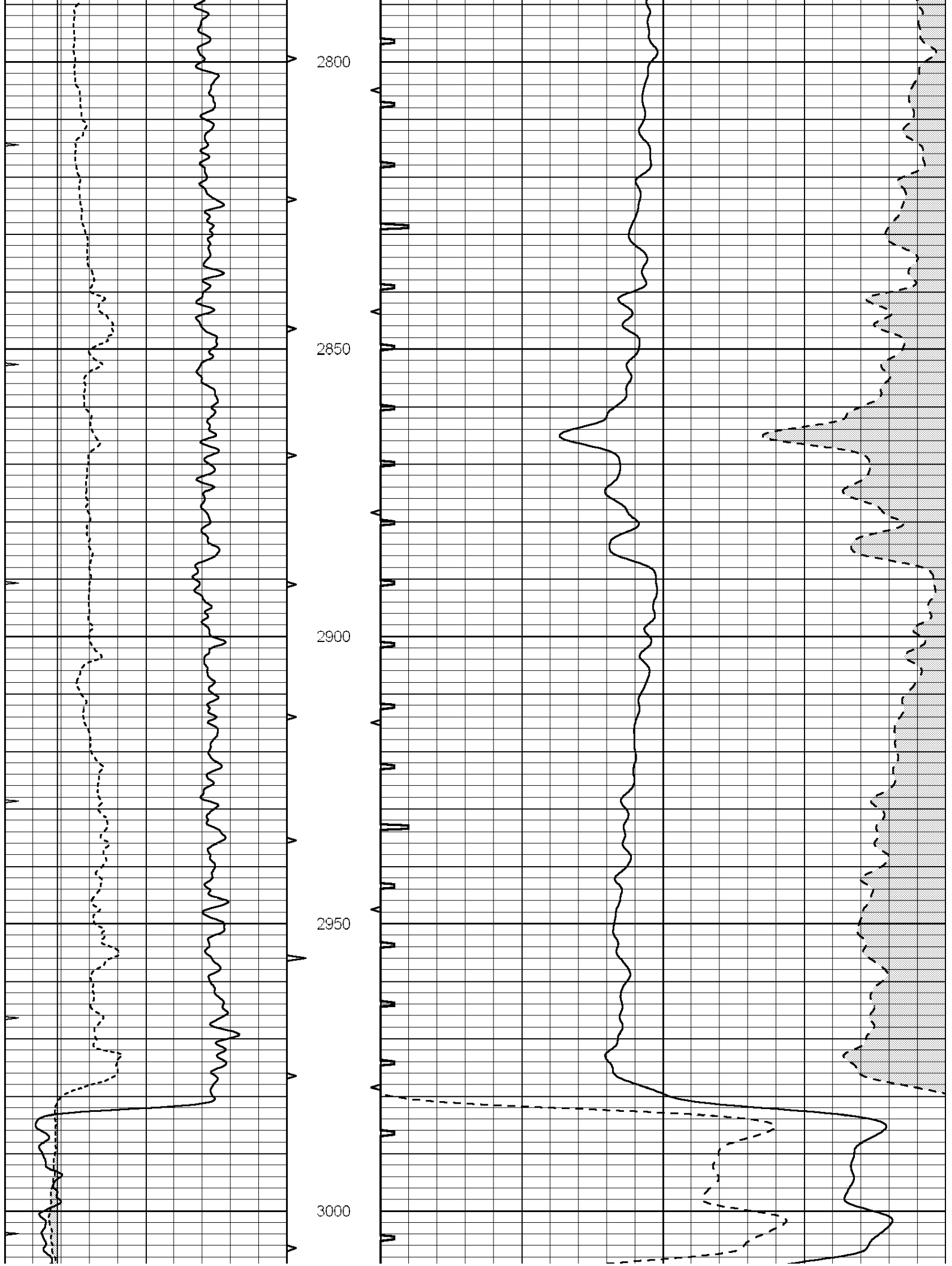
2450

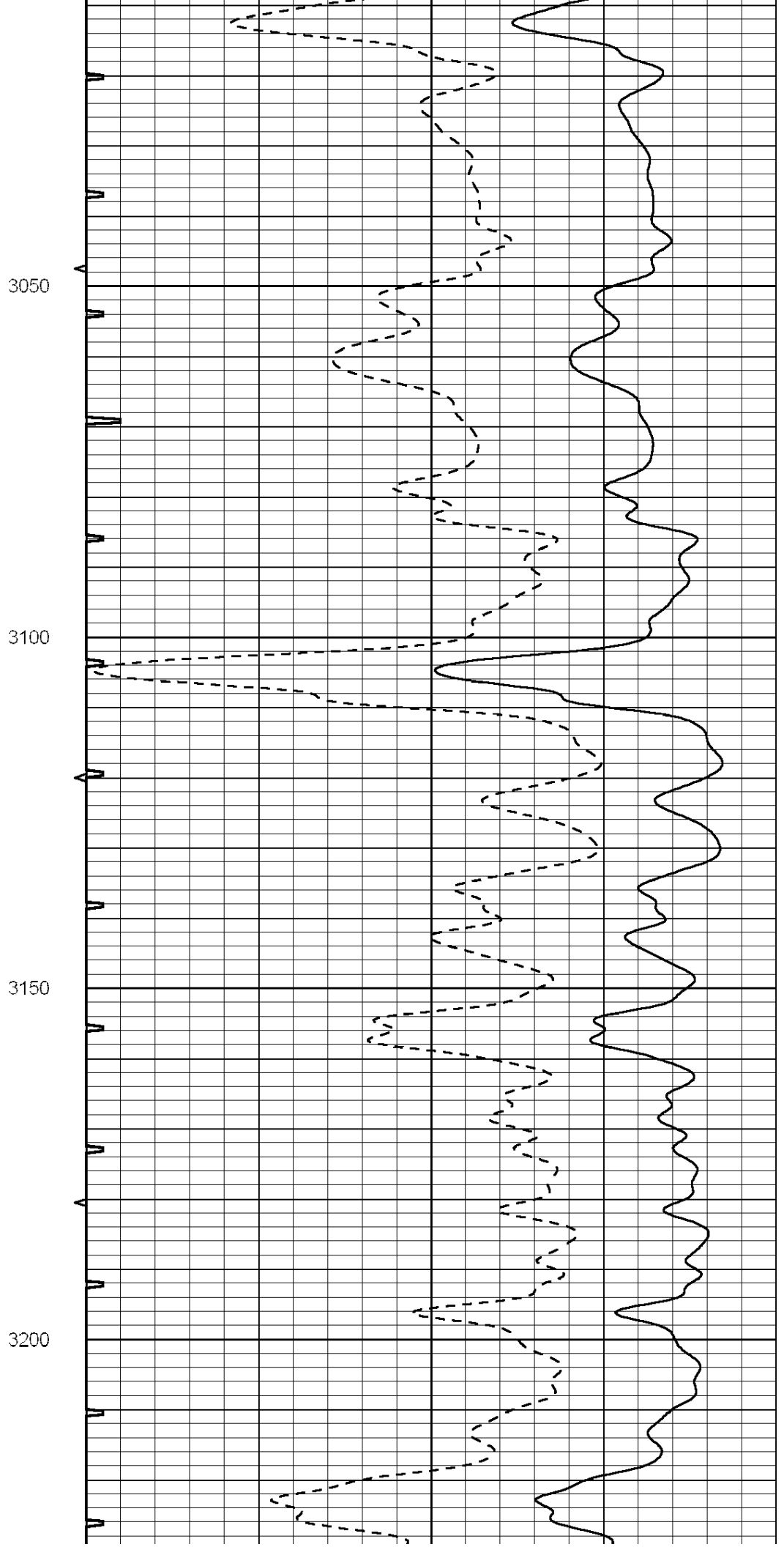
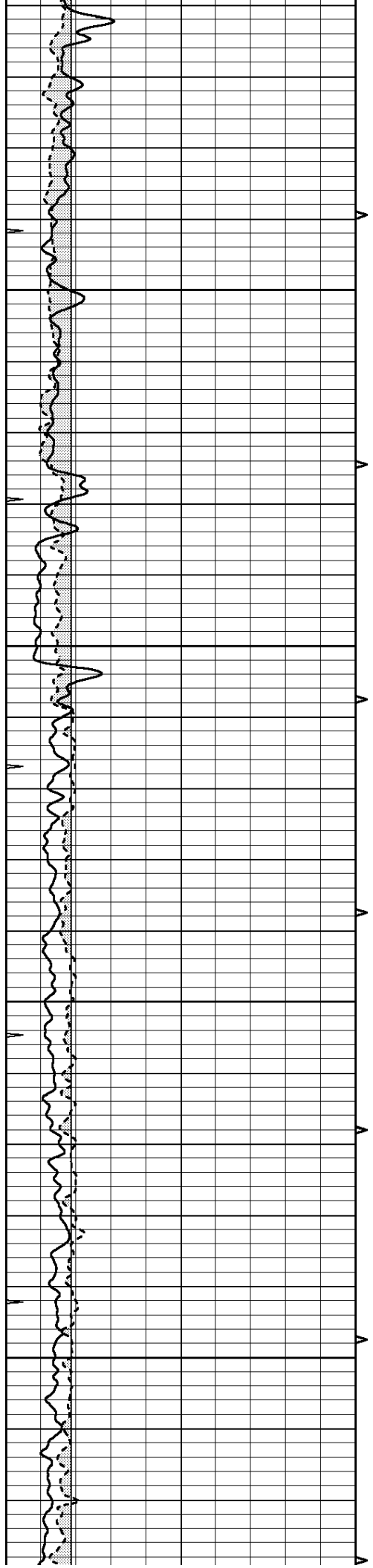
2500

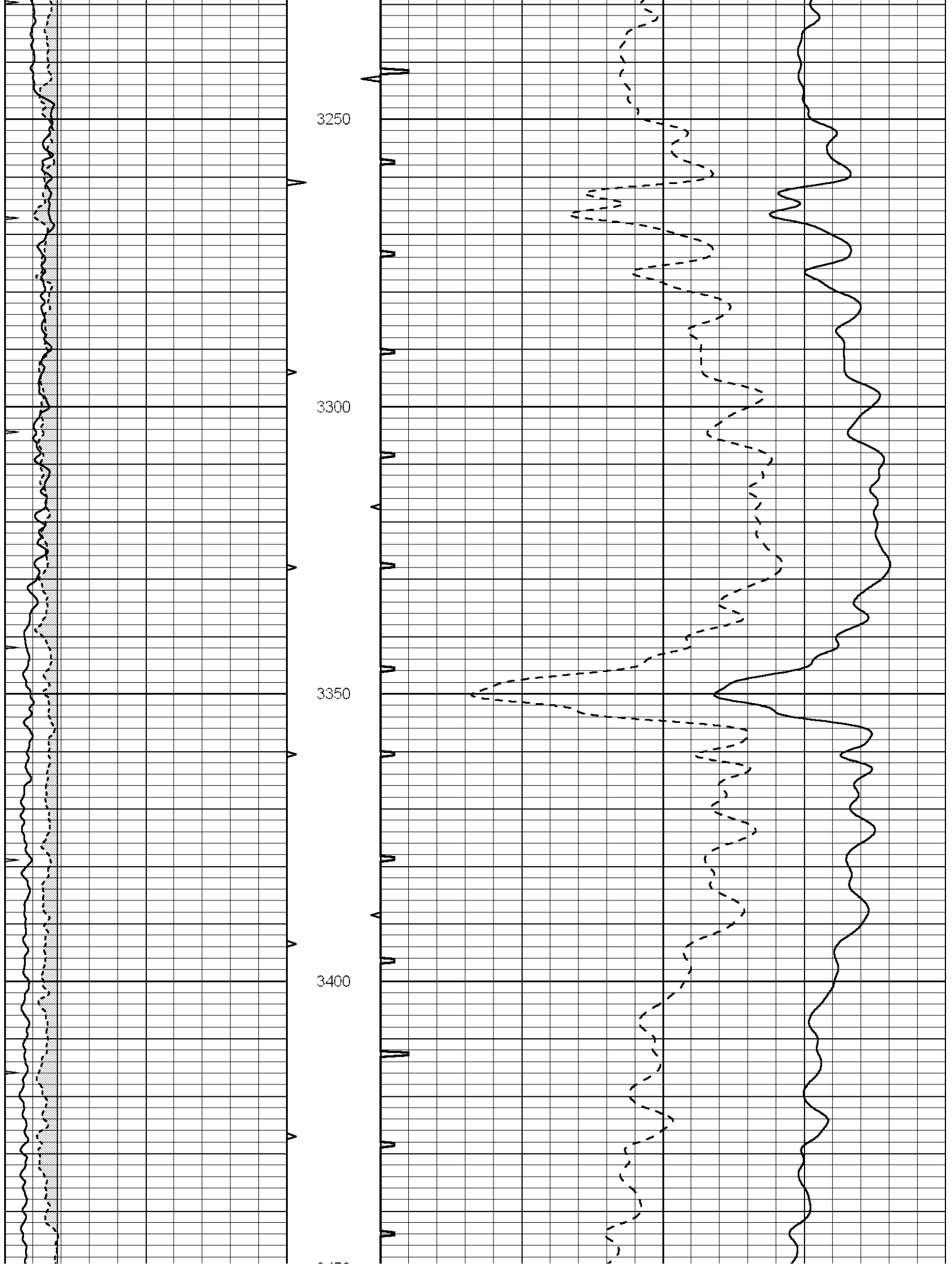
2550

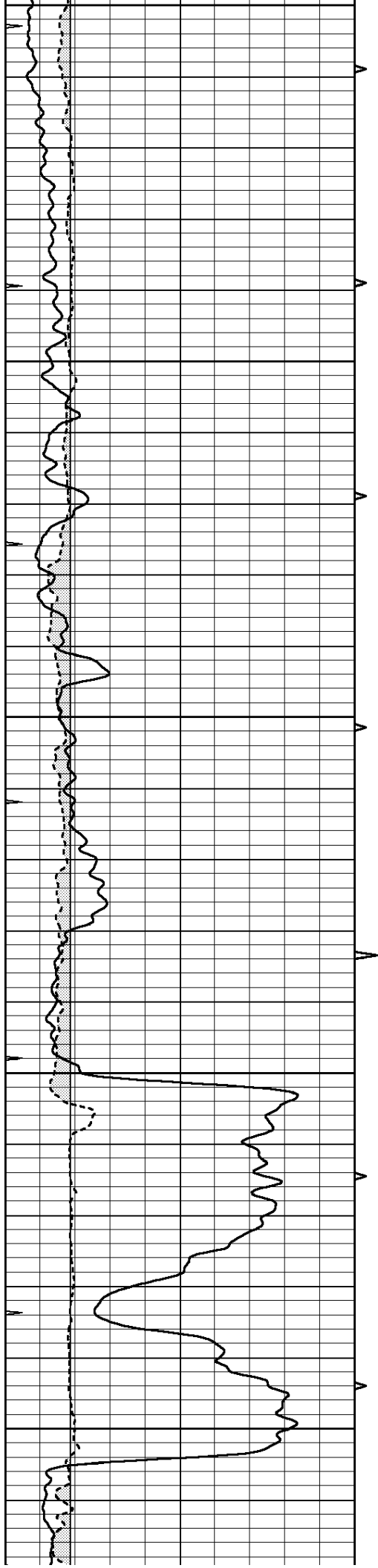




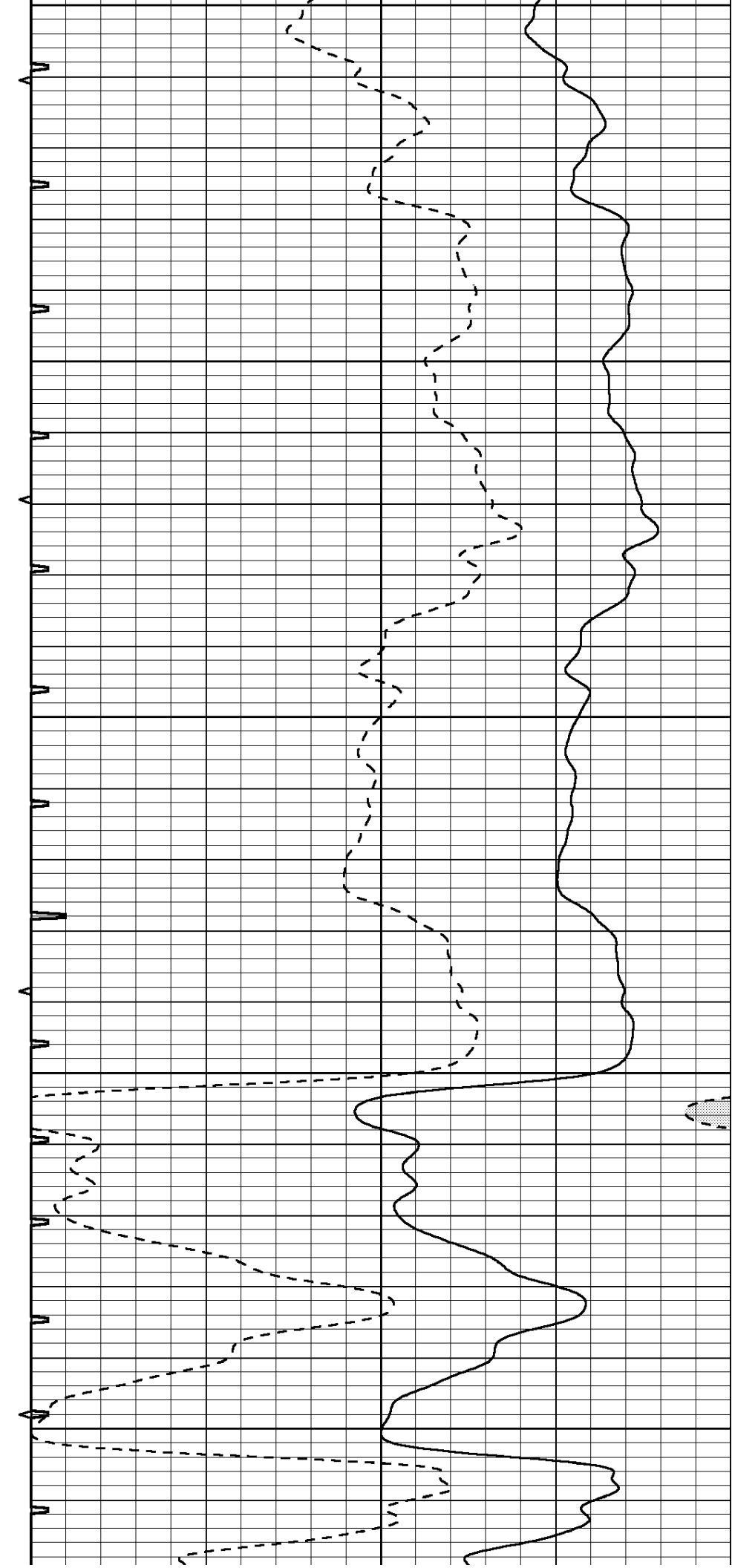


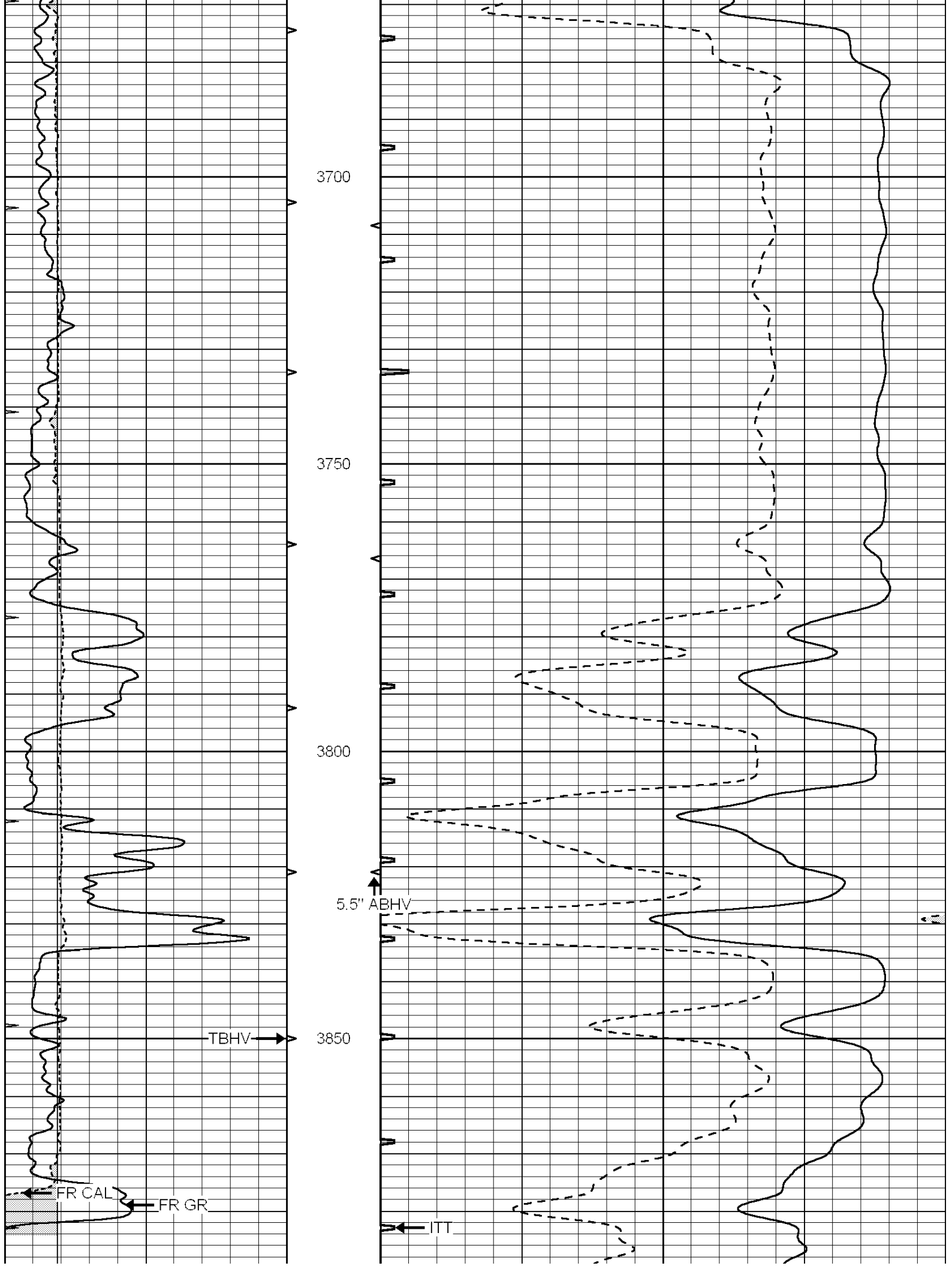


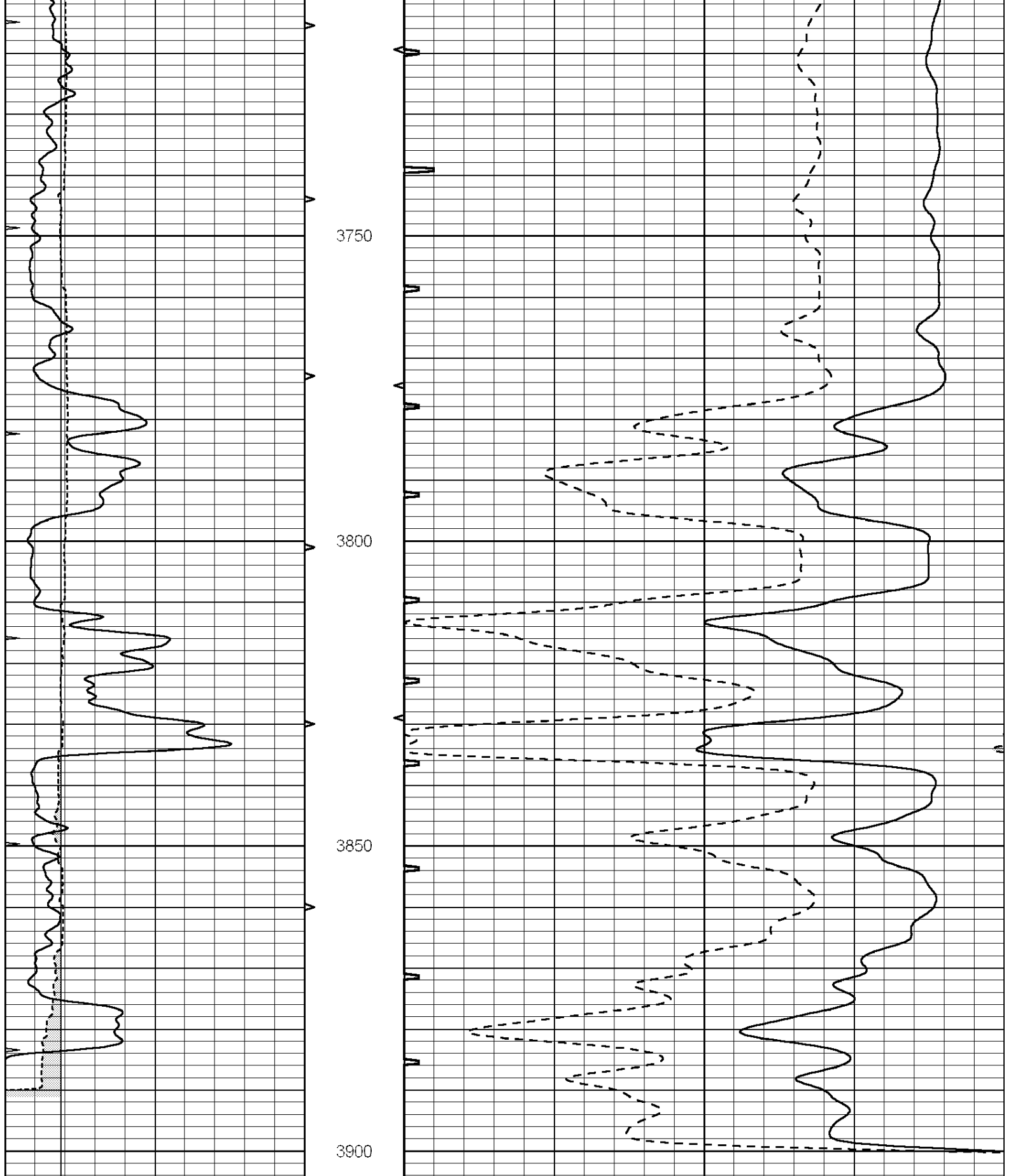




3450
3500
3550
3600
3650







0	GAMMA RAY (GAPI)	150	ABHV	140	DELTA TIME (usec/ft)	40
6	CALIPER (in)	16	10 (ft3)	0 30	SONIC POROSITY (pu)	-10
0	MINMK	20	TBHV	0	ITT (msec)	20
			0 (ft3)	10		