



MICRO LOG

Company I.A. OPERATING, INC.
 Well STRATHMAN - McKEE #10-1
 Field HEINEN
 County NEMAHA
 State KANSAS

Company I.A. OPERATING, INC.
 Well STRATHMAN - McKEE #10-1
 Field HEINEN
 County NEMAHA State KANSAS

Location: API # : 15-131-20247-0000
 140' FNL & 1070' FVWL
 NE - NE - NW - NW

Permanent Datum GROUND LEVEL Elevation 1351
 Log Measured From KELLY BUSHING 9' A.G.L.
 Drilling Measured From KELLY BUSHING

SEC 10 TWP 5S RGE 13E

Other Services
 CDL/CNL/PE
 DIL/SONIC

Elevation
 K.B. 1360
 D.F. 1358
 G.L. 1351

Date	2/18/19		
Run Number	TWO		
Depth Driller	3900		
Depth Logger	3901		
Bottom Logged Interval	3885		
Top Log Interval	2400		
Casing Driller	8 5/8" @ 265'		
Casing Logger	265		
Bit Size	7 7/8"		
Type Fluid in Hole	CHEMICAL MUD	CHLORIDES 500 PPM	
Density / Viscosity	9.4/62		
pH / Fluid Loss	9.07/ 2		
Source of Sample	FLOWLINE		
Rim @ Meas. Temp	1.90 @ 60F		
Rmf @ Meas. Temp	1.43 @ 60F		
Rmc @ Meas. Temp	2.28 @ 60F		
Source of Rmf / Rmc	MEASUREMENT		
Rim @ BHT	.991 @ 115F		
Time Circulation Stopped	4.5 HOURS		
Time Logger on Bottom	11:00 P.M.		
Maximum Recorded Temperature	115F		
Equipment Number	922339		
Location	HAYS, KANSAS		
Recorded By	JEFF LUEBBERS		
Witnessed By	JEFF LAWLER		

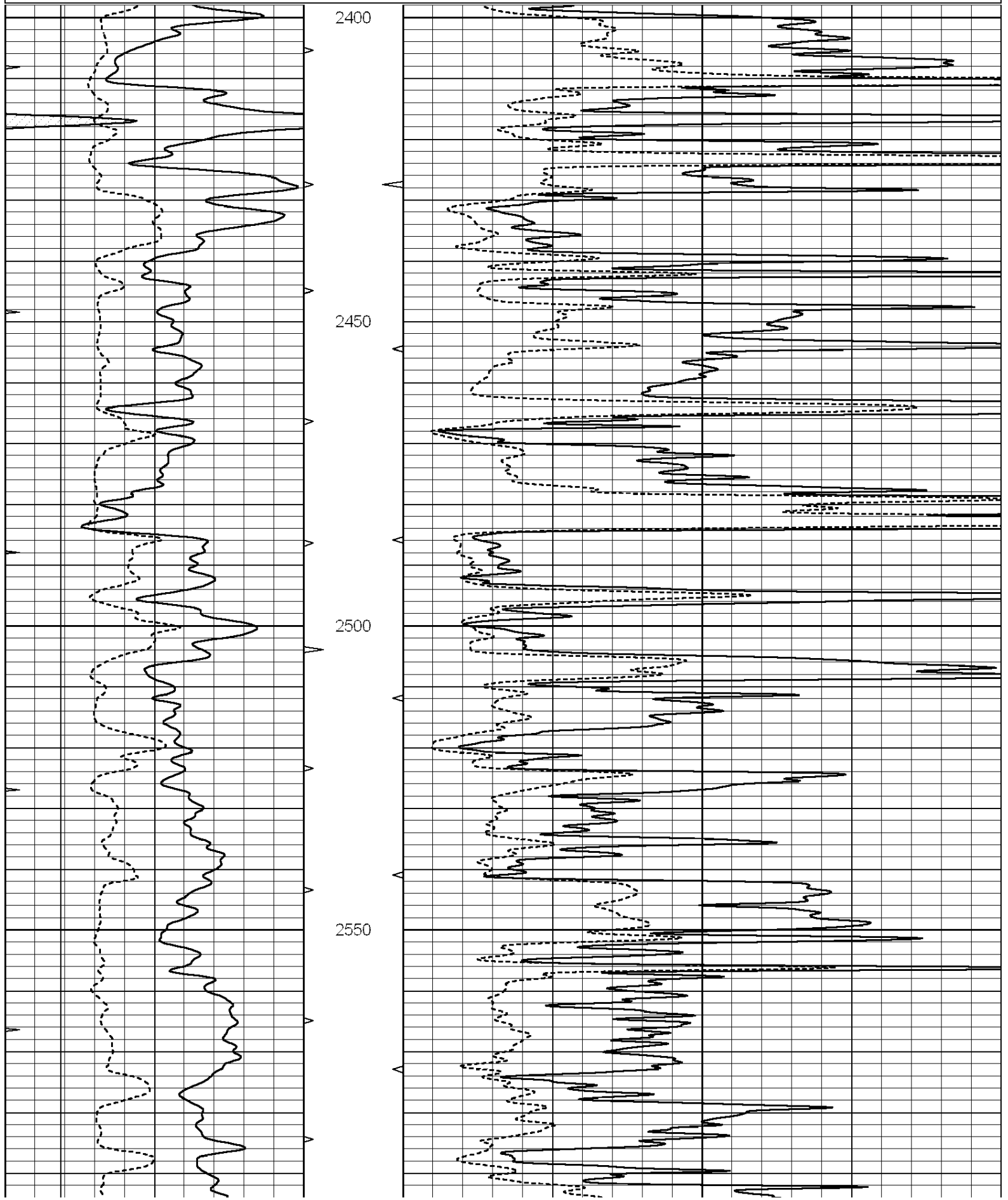
<<< Fold Here >>>

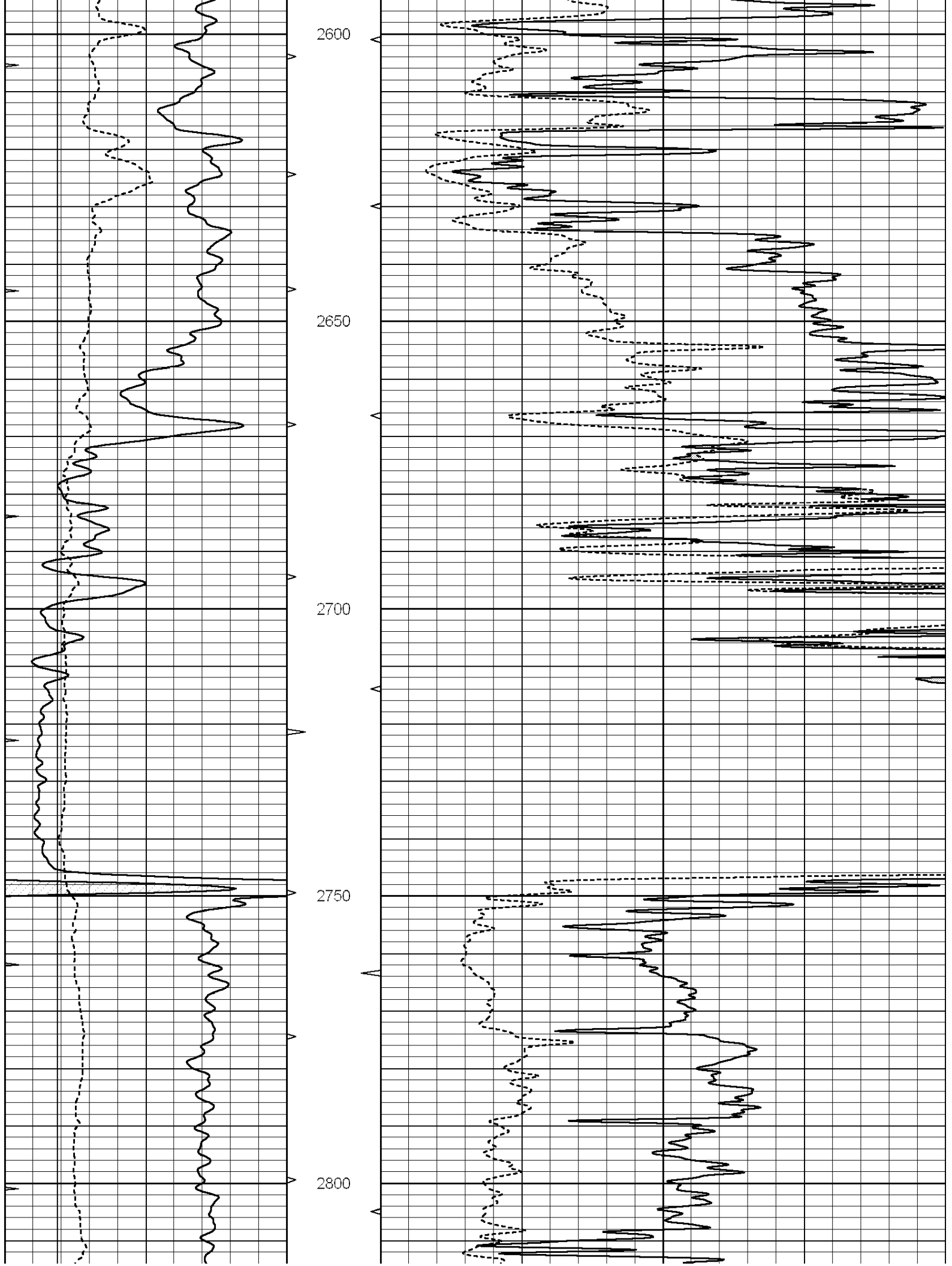
All interpretations are opinions based on inferences from electrical or other measurements and we cannot and do not guarantee the accuracy or correctness of any interpretation, and we shall not, except in the case of gross or willful negligence on our part, be liable or responsible for any loss, costs, damages, or expenses incurred or sustained by anyone resulting from any interpretation made by any of our officers, agents or employees. These interpretations are also subject to our general terms and conditions set out in our current Price Schedule.

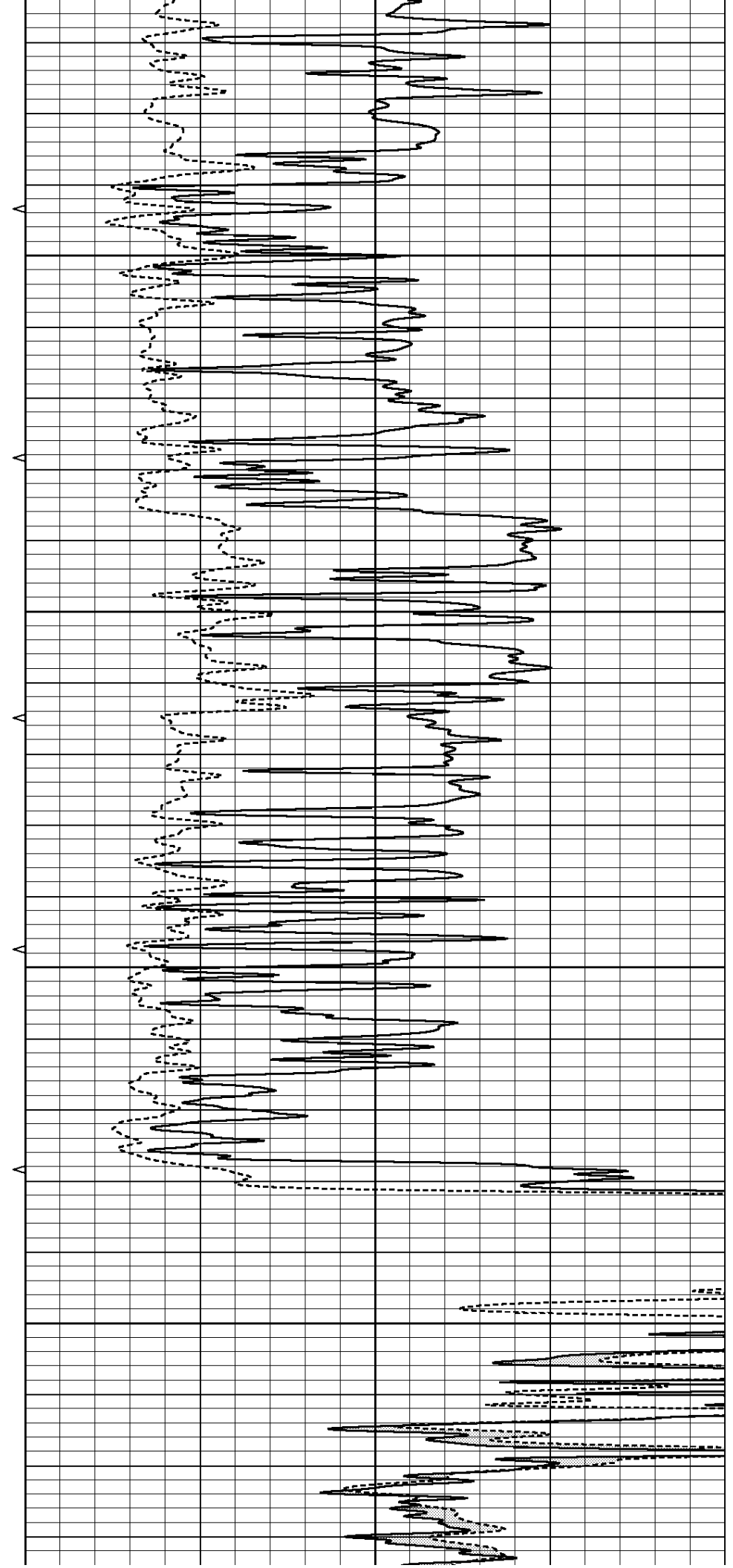
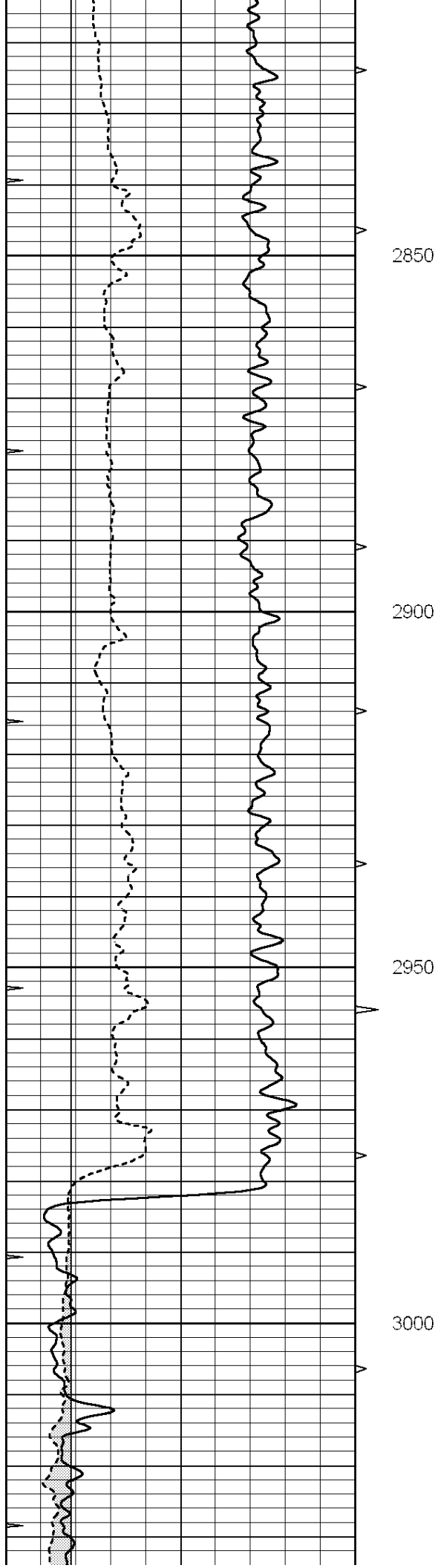
Comments

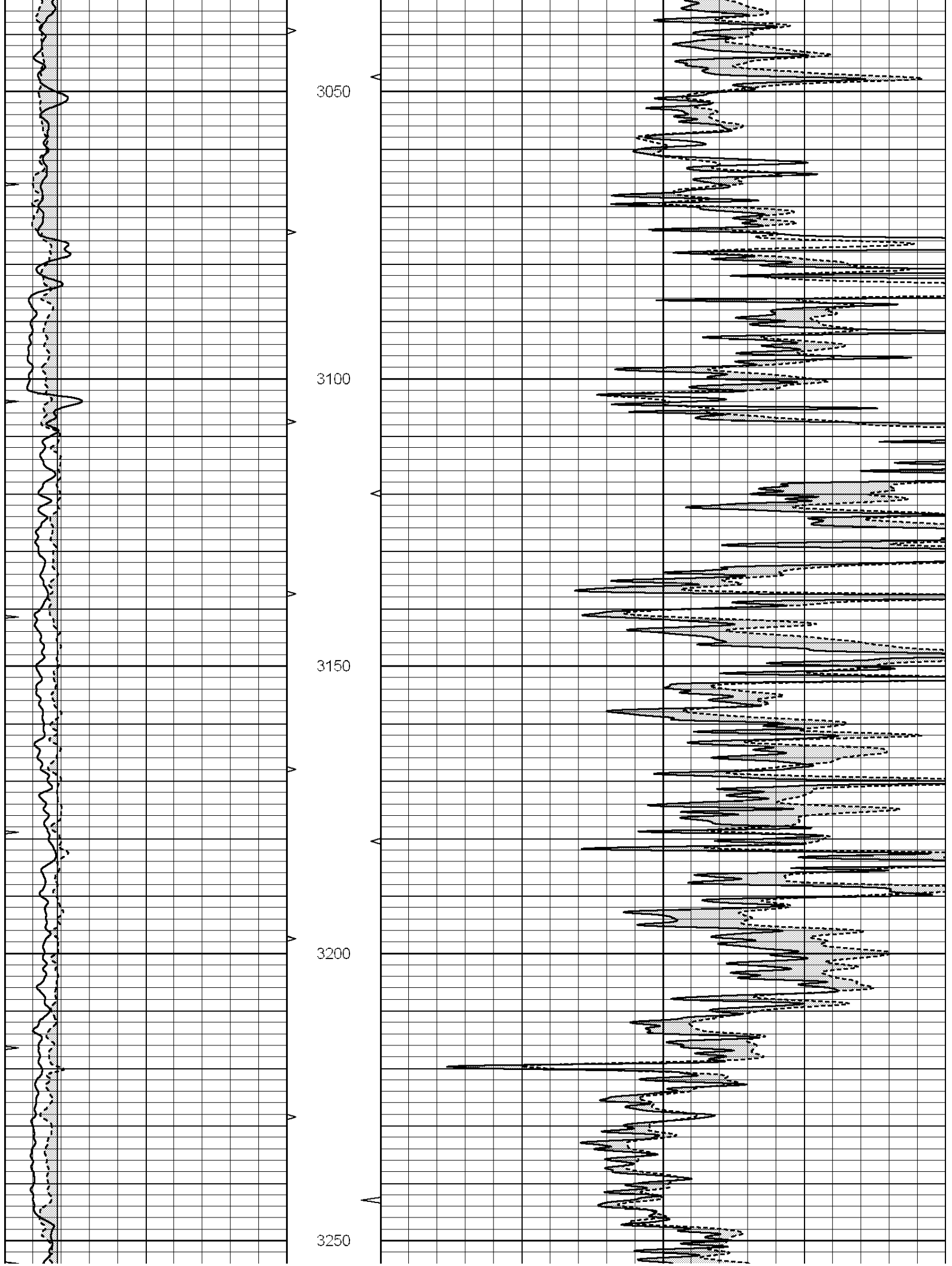
THANK YOU FOR USING ELI WIRELINE HAYS, KANSAS (785) 628-6395
 DIRECTIONS
 CORNING, KS., 4E. ON HWY 9 TO HWY 62, 1S., 1/4E., S. NTO

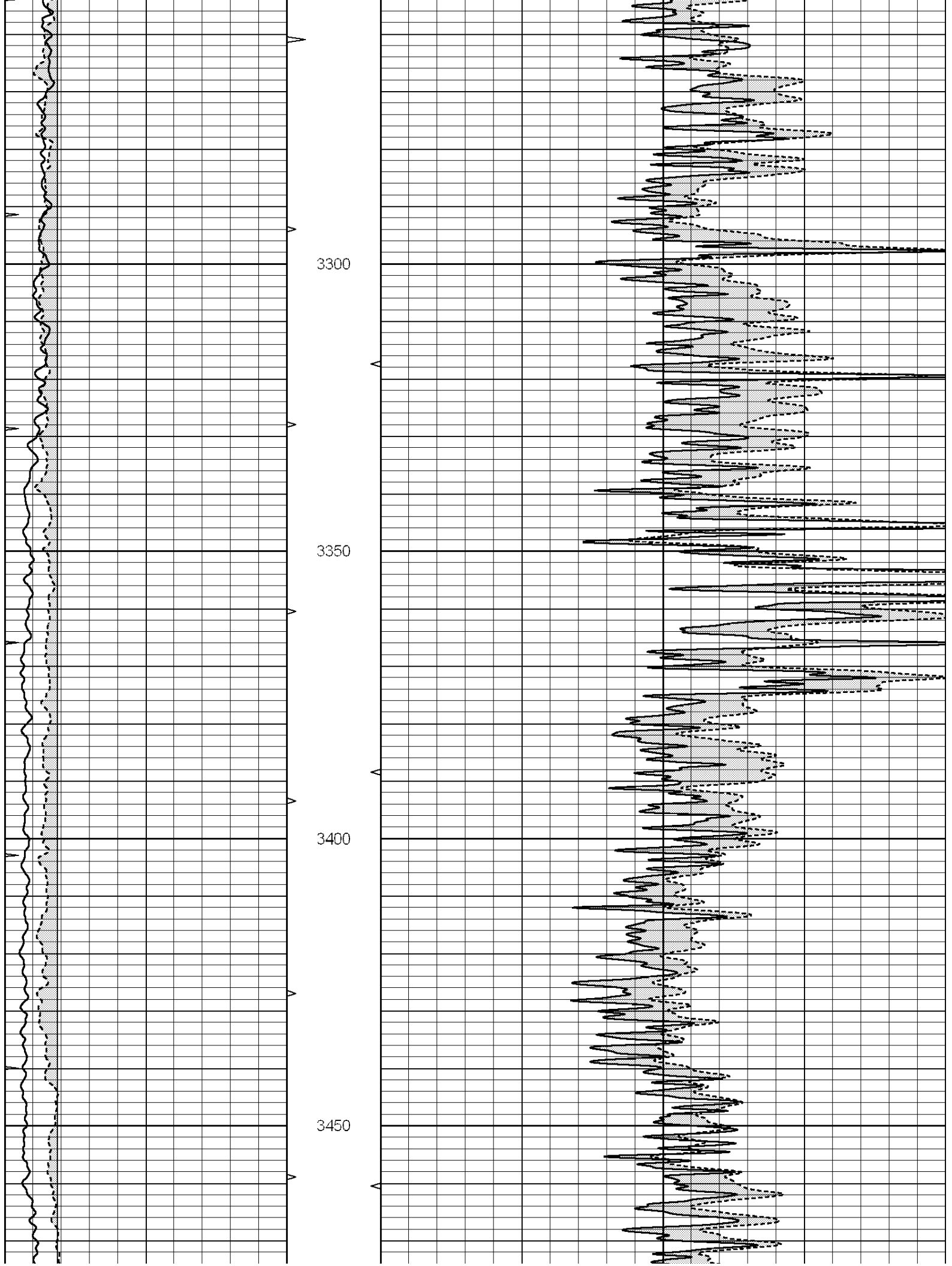
0	GAMMA RAY (GAPI)	150	ABHV	0	MEL1.5 (Ohm-m)	40
6	CALIPER (in)	16	10 (ft3)	0 0	MEL 20 (Ohm-m)	40
0	MINMK	20	TBHV			
			0 (ft3)	10		

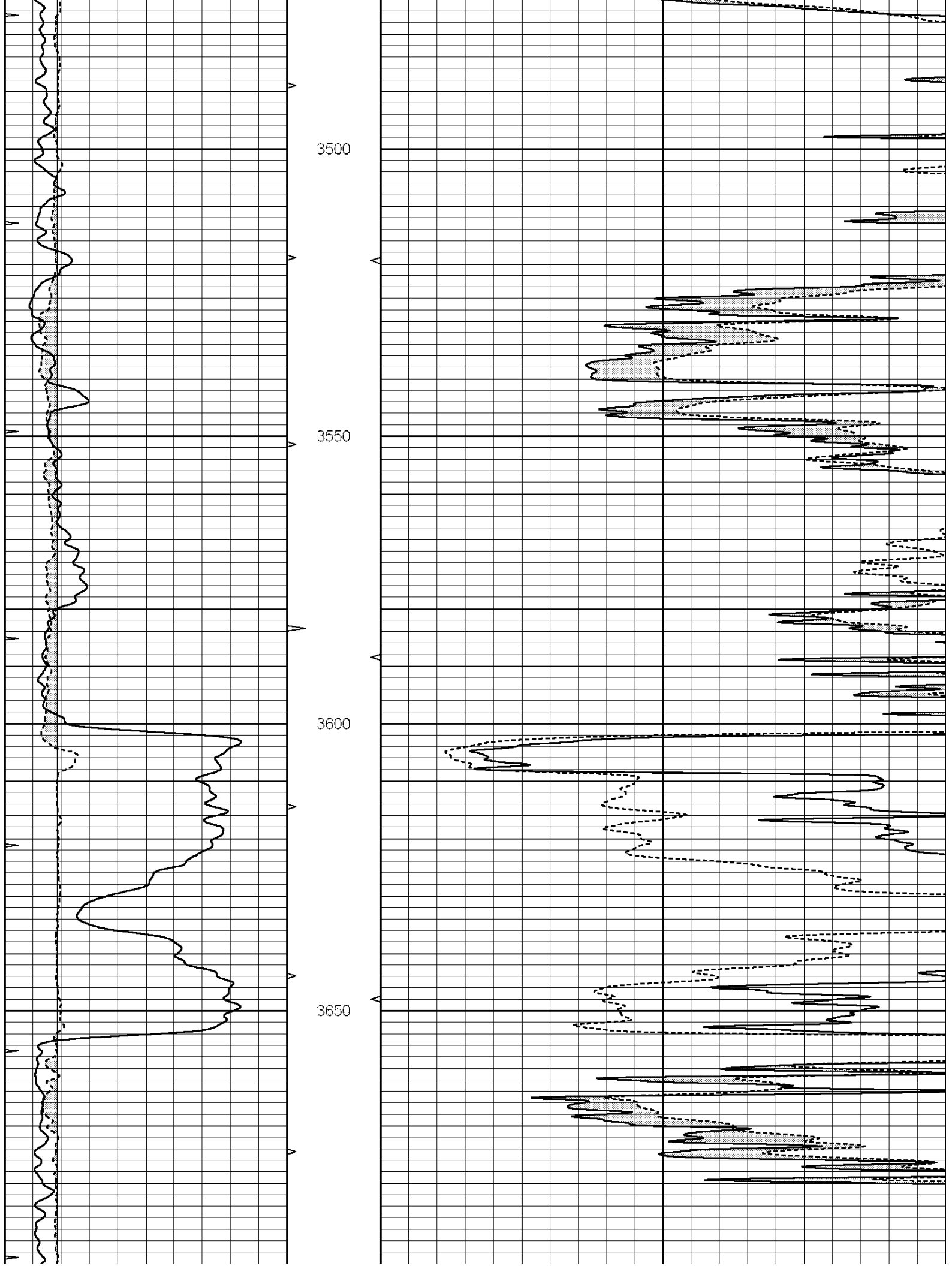


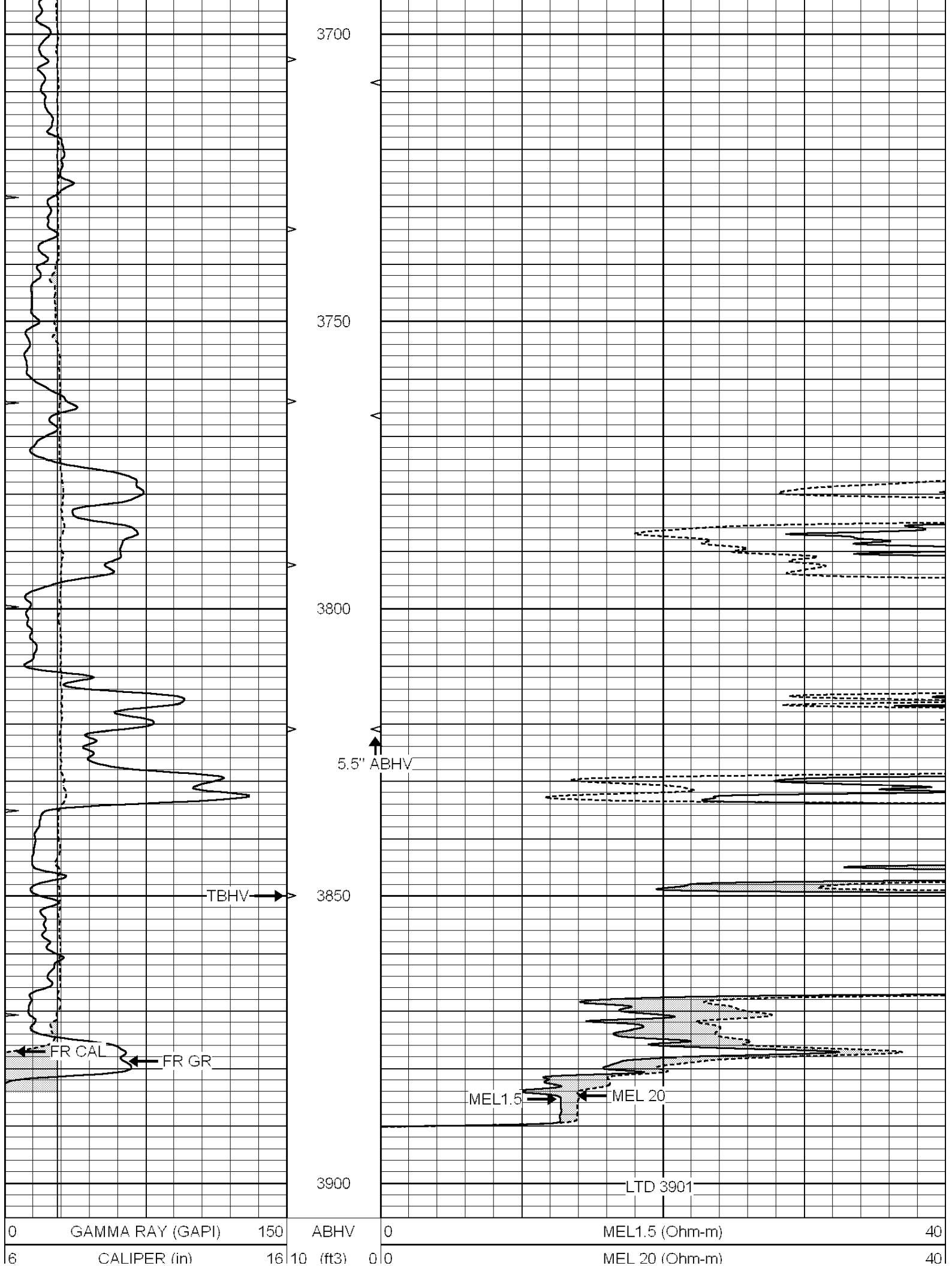




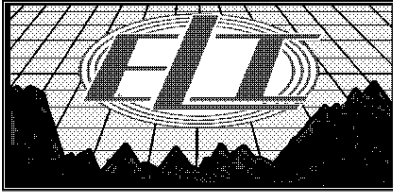








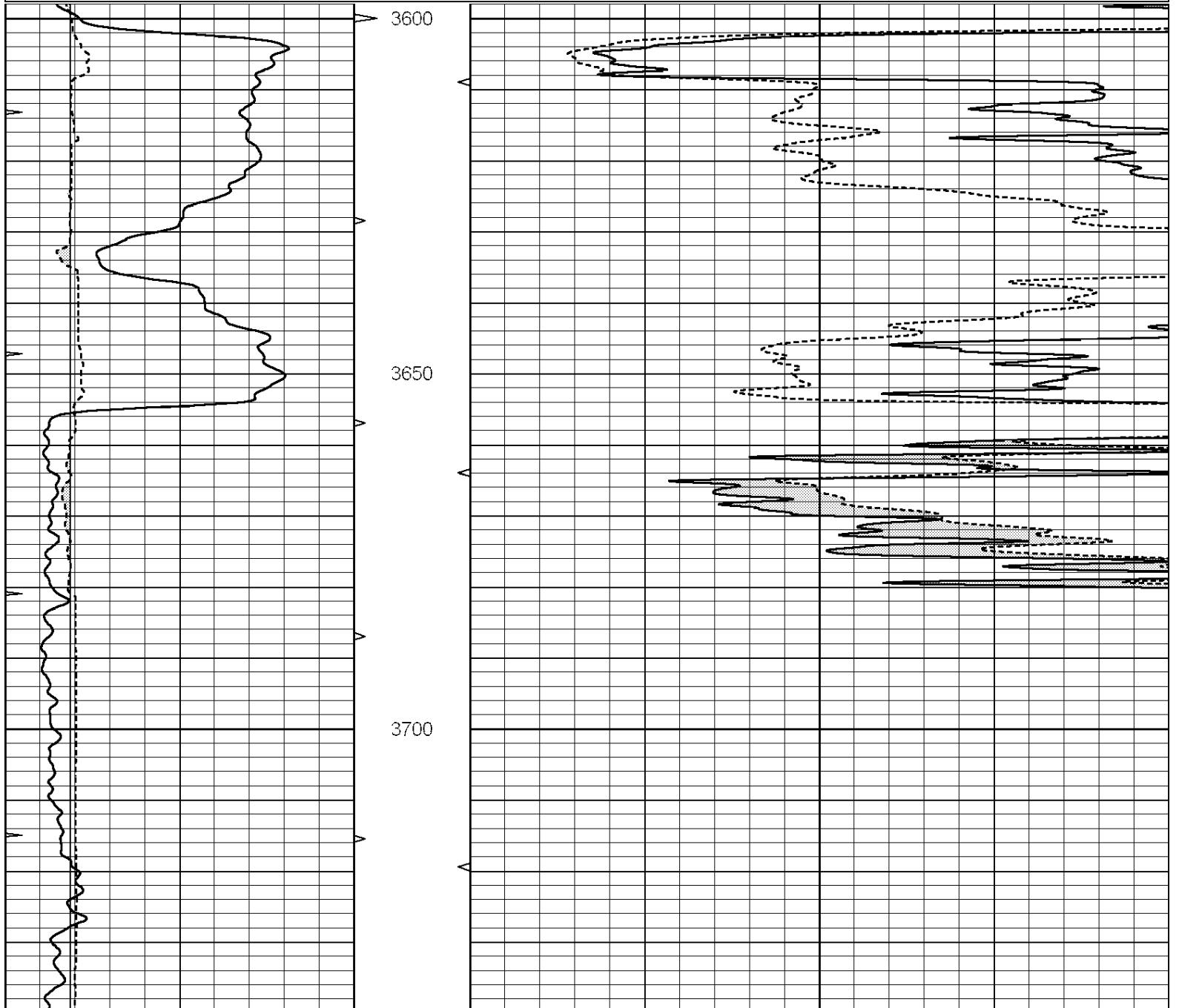
0	MINMK	20	TBHV	
			0 (ft3) 10	

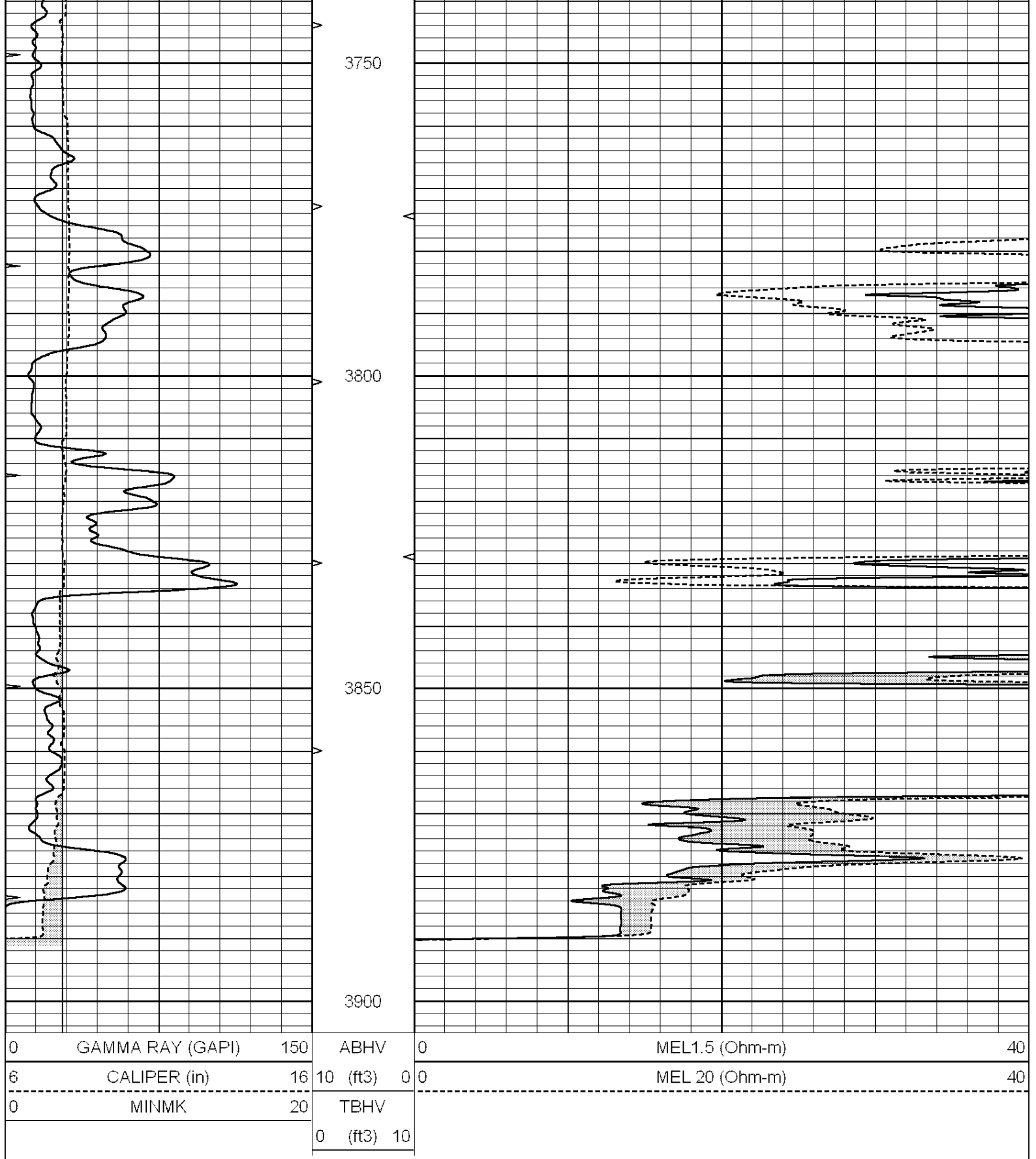


REPEAT SECTION

Database File: 3342pe.db
 Dataset Pathname: pass5.3
 Presentation Format: micro
 Dataset Creation: Tue Feb 19 00:54:10 2019 by Calc SOC 120430
 Charted by: Depth in Feet scaled 1:240

0	GAMMA RAY (GAPI)	150	ABHV	0	MEL1.5 (Ohm-m)	40
6	CALIPER (in)	16	10 (ft3)	0 0	MEL 20 (Ohm-m)	40
0	MINMK	20	TBHV			
			0 (ft3) 10			





Calibration Report

Database File: 3342pe.db
 Dataset Pathname: pass6.5
 Dataset Creation: Tue Feb 19 01:55:08 2019

MICRO Calibration Report

Serial Number: 070911
 Tool Model: ProbeN

Tool Model: OPEN
Performed: Wed Feb 13 21:21:01 2019

Caliper Calibration:	Gain=5.000	Offset=1.500
References	Low Cal 8.000	High Cal 20.000
Readings	1.300	3.700

1.5" Calibration:	Gain=60.000	Offset=-5.000
References	Low Cal 0.000	High Cal 20.000
Readings	0.001	1.240

2" Calibration:	Gain=60.000	Offset=-5.000
References	Low Cal 0.000	High Cal 20.000
Readings	0.001	1.076

Gamma Ray Calibration Report

Serial Number: 110959
Tool Model: OPEN_GR
Performed: Tue Feb 19 00:39:18 2019

Calibrator Value: 1.0 GAPI

Background Reading: 0.0 cps
Calibrator Reading: 1.0 cps

Sensitivity: 0.2300 GAPI/cps