



**COMPENSATED
DENSITY / NEUTRON
PE LOG**

Company I.A. OPERATING, INC.
Well STRATHMAN - McKEE #10-1
Field HEINEN
County NEMAHA
State KANSAS

Company I.A. OPERATING, INC.
Well STRATHMAN - McKEE #10-1
Field HEINEN
County NEMAHA State KANSAS

Location: API # : 15-131-20247-0000
140' FNL & 1070' FVL
NE - NE - NW - NW
Permanent Datum GROUND LEVEL Elevation 1351
Log Measured From KELLY BUSHING 9' A.G.L.
Drilling Measured From KELLY BUSHING
SEC 10 TWP 5S RGE 13E
Other Services
DIL/MEL
SONIC
Elevation
K.B. 1360
D.F. 1358
G.L. 1351

Date	2/18/79		
Run Number	ONE		
Depth Driller	3900		
Depth Logger	3901		
Bottom Logged Interval	3877		
Top Log Interval	2400		
Casing Driller	8 5/8" @ 265'		
Casing Logger	265		
Bit Size	7 7/8"		
Type Fluid in Hole	CHEMICAL MUD	CHLORIDES 500 PPM	
Density / Viscosity	9.4/62		
pH / Fluid Loss	9.07/2		
Source of Sample	FLOWLINE		
Rim @ Meas. Temp	1.90 @ 60F		
Rmf @ Meas. Temp	1.43 @ 60F		
Rmc @ Meas. Temp	2.28 @ 60F		
Source of Rmf / Rmc	MEASUREMENT		
Rim @ BHT	.991 @ 115F		
Time Circulation Stopped	3 HOURS		
Time Logger on Bottom	9:00 P.M.		
Maximum Recorded Temperature	115F		
Equipment Number	922339		
Location	HAYS, KANSAS		
Recorded By	JEFF LUEBBERS		
Witnessed By	JEFF LAWLER		

<<< Fold Here >>>

All interpretations are opinions based on inferences from electrical or other measurements and we cannot and do not guarantee the accuracy or correctness of any interpretation, and we shall not, except in the case of gross or willful negligence on our part, be liable or responsible for any loss, costs, damages, or expenses incurred or sustained by anyone resulting from any interpretation made by any of our officers, agents or employees. These interpretations are also subject to our general terms and conditions set out in our current Price Schedule.

Comments

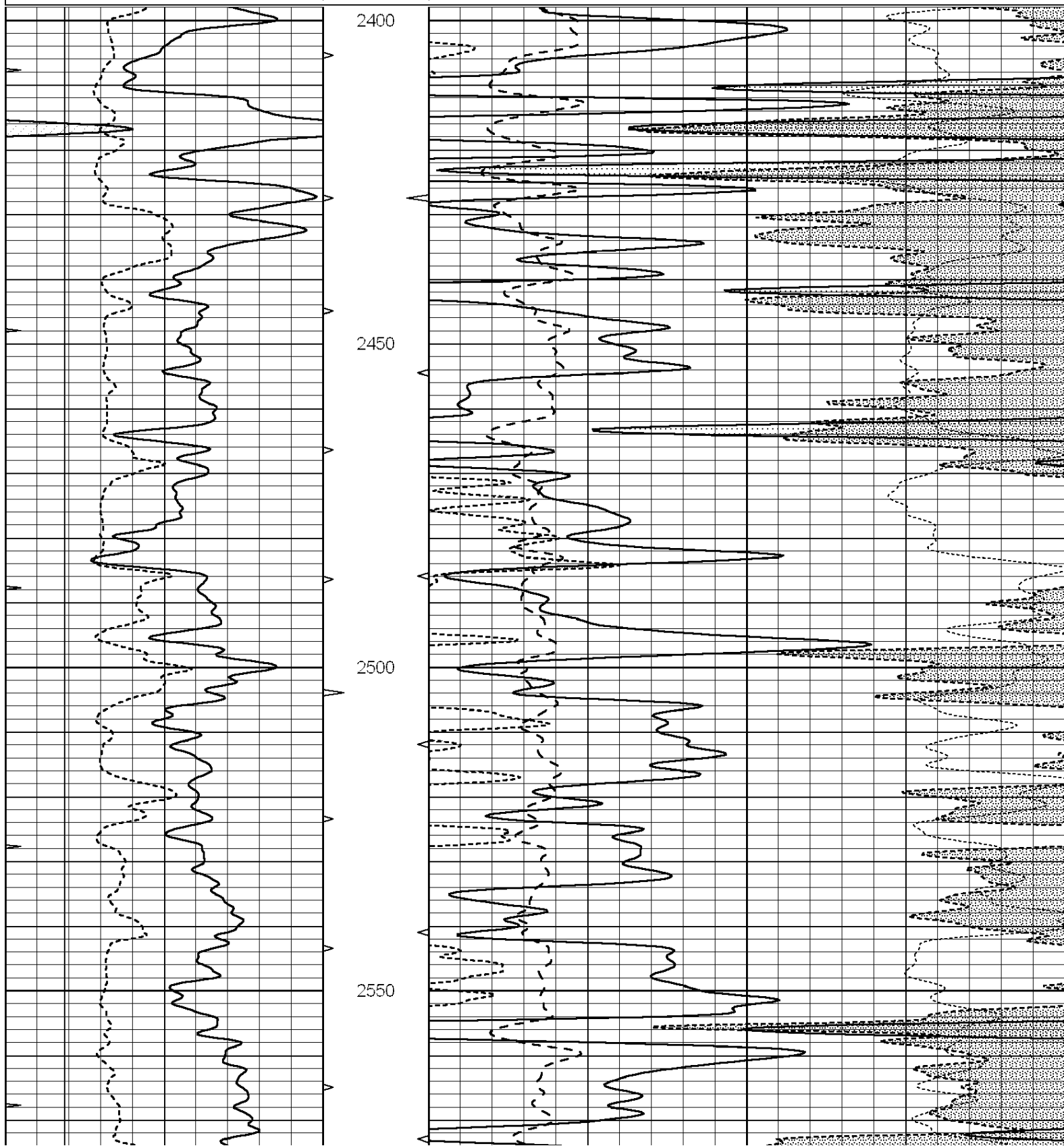
THANK YOU FOR USING ELI WIRELINE HAYS, KANSAS (785) 628-6395
DIRECTIONS
CORNING, KS., 4E. ON HWY 9 TO HWY 62, 1S., 1/4E., S. NTO

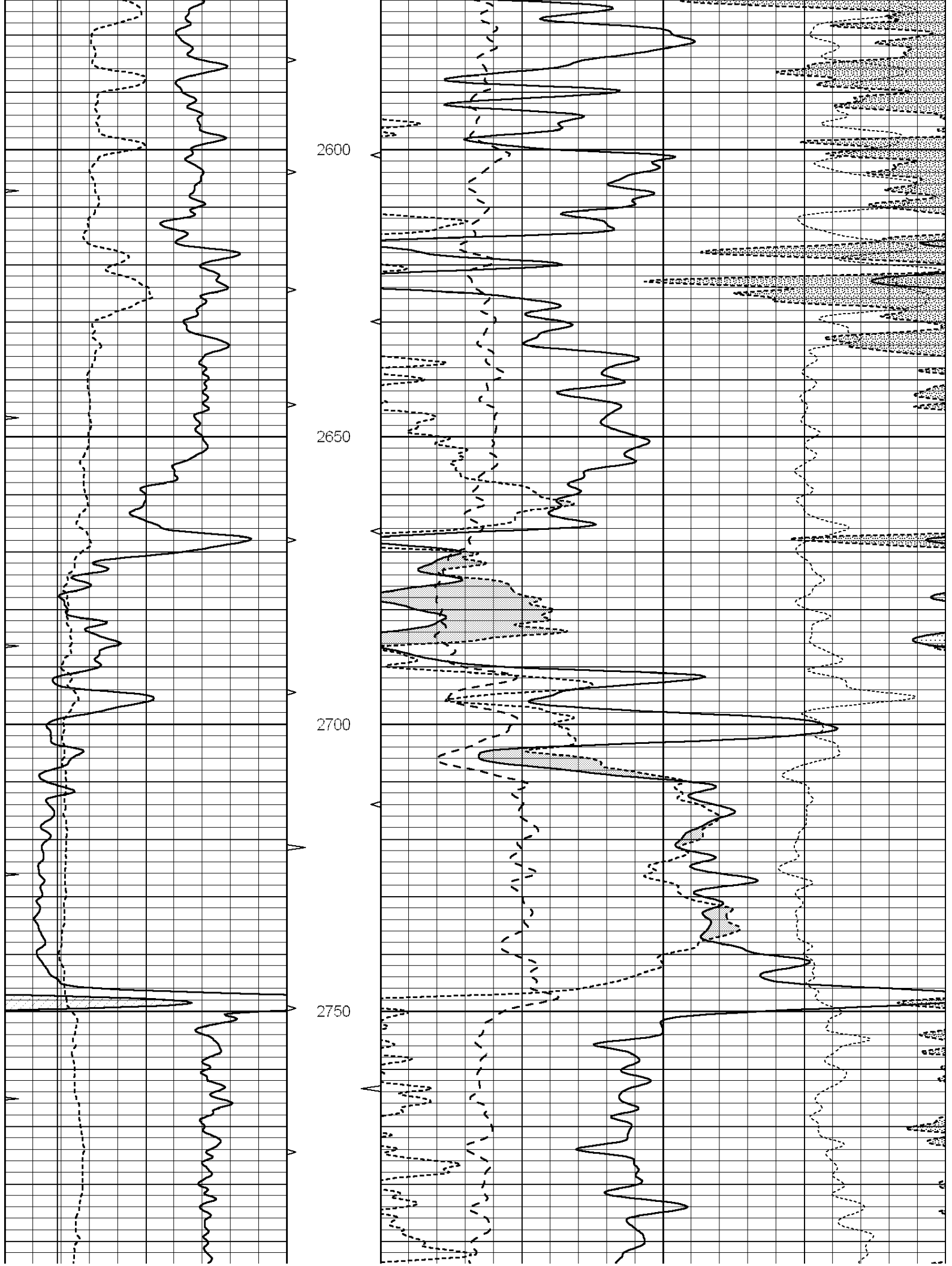


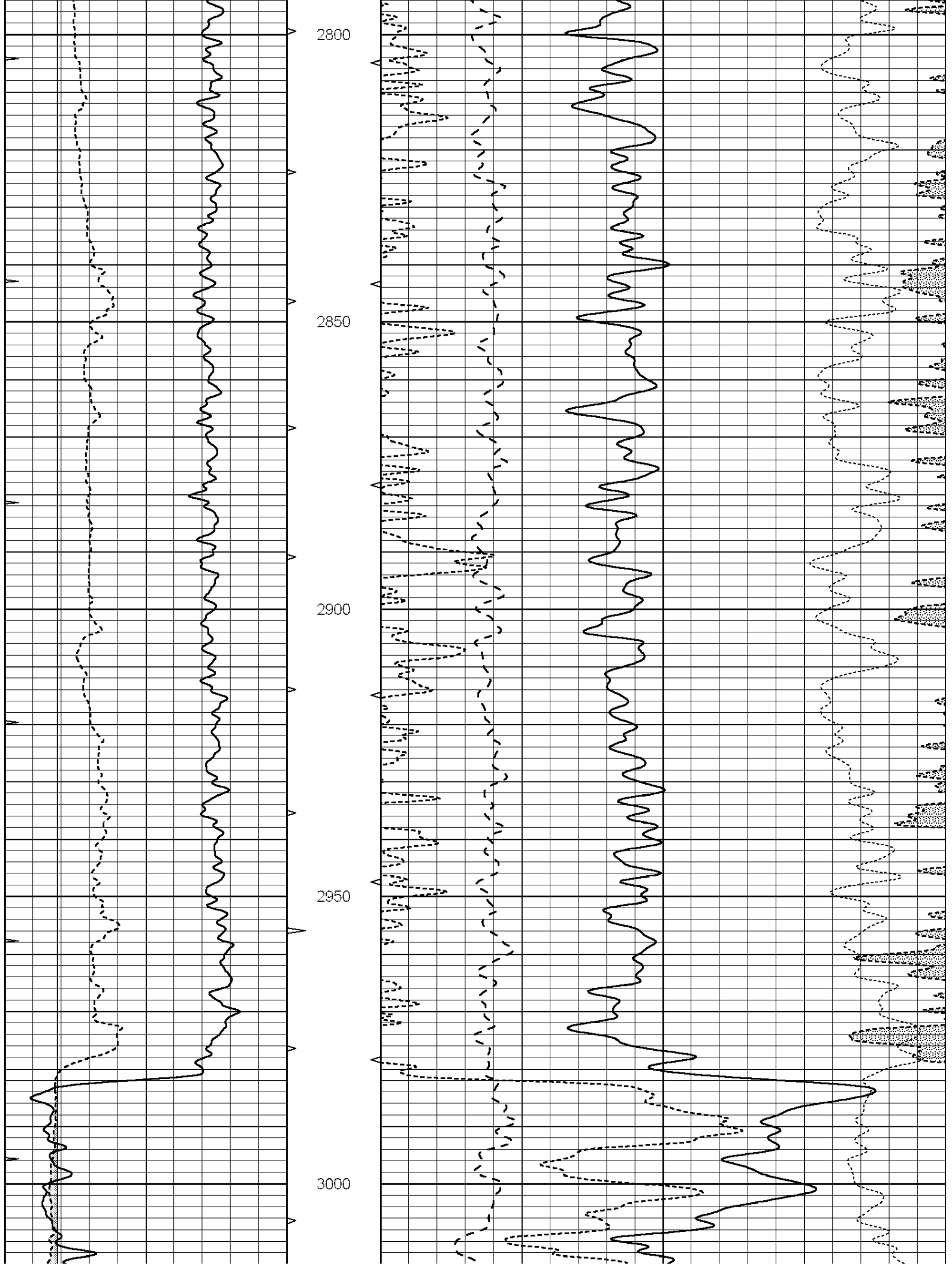
MAIN SECTION

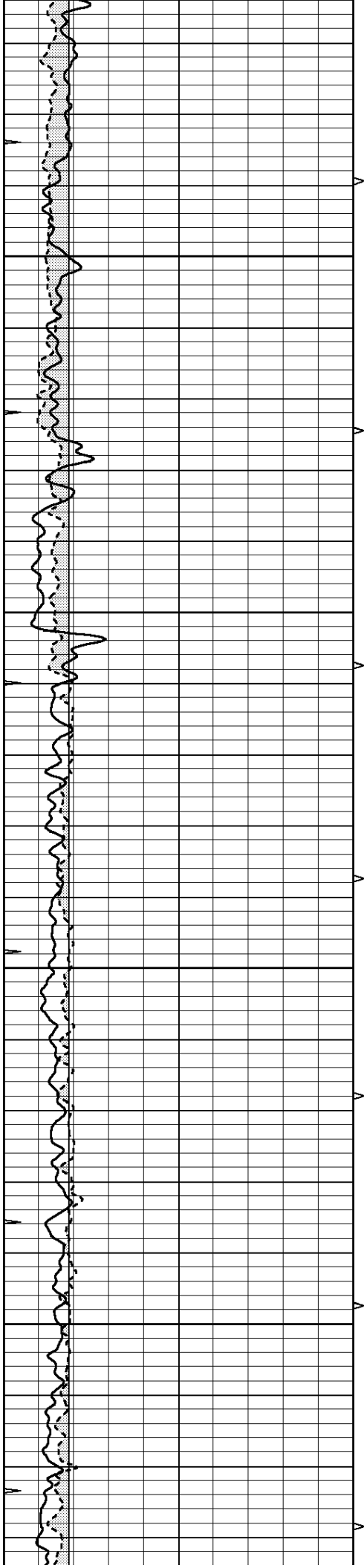
Database File: 3342pe.db
 Dataset Pathname: pass3.9
 Presentation Format: ldt_neu
 Dataset Creation: Mon Feb 18 23:47:22 2019 by Calc SOC 120430
 Charted by: Depth in Feet scaled 1:240

0	GAMMA RAY (GAPI)	150	ABHV	30	COMPENSATED DENSITY (pu)		-10		
6	CALIPER (in)	16	10 (ft3)	0	30	COMPENSATED NEUTRON (pu)		-10	
0	MINMK	20	TBHV	0	PE	10	-0.25	CORRECTION (g/cc)	0.25
			0 (ft3)	10					







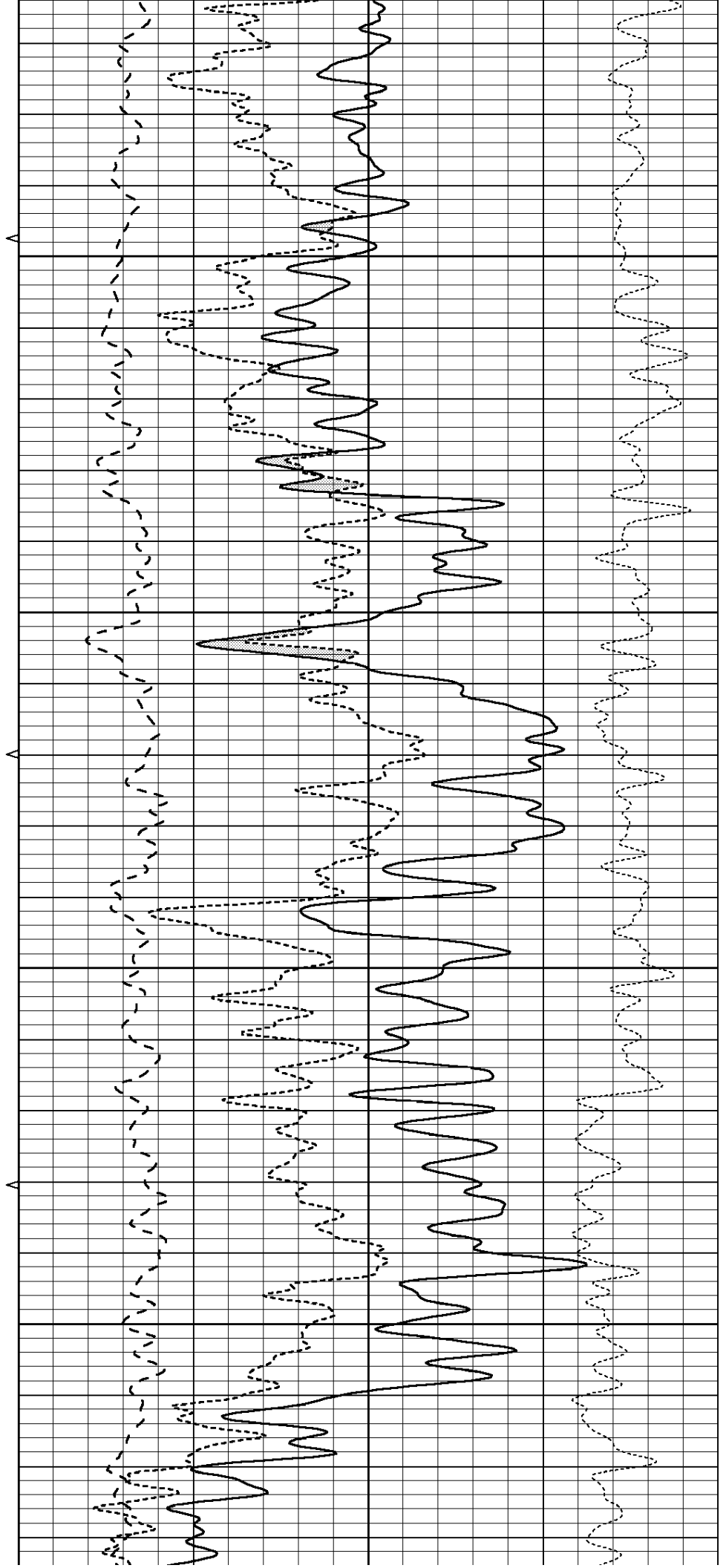


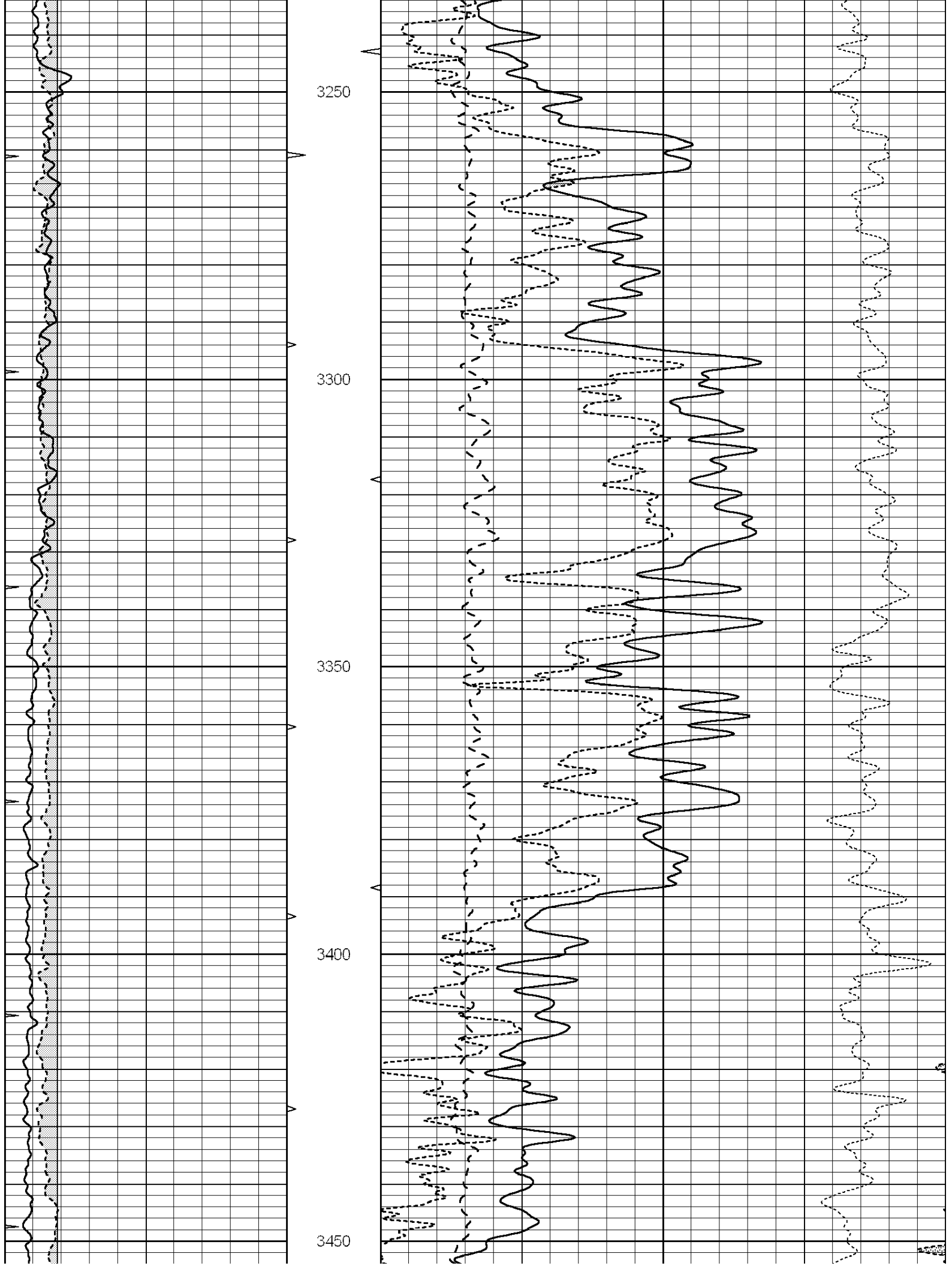
3050

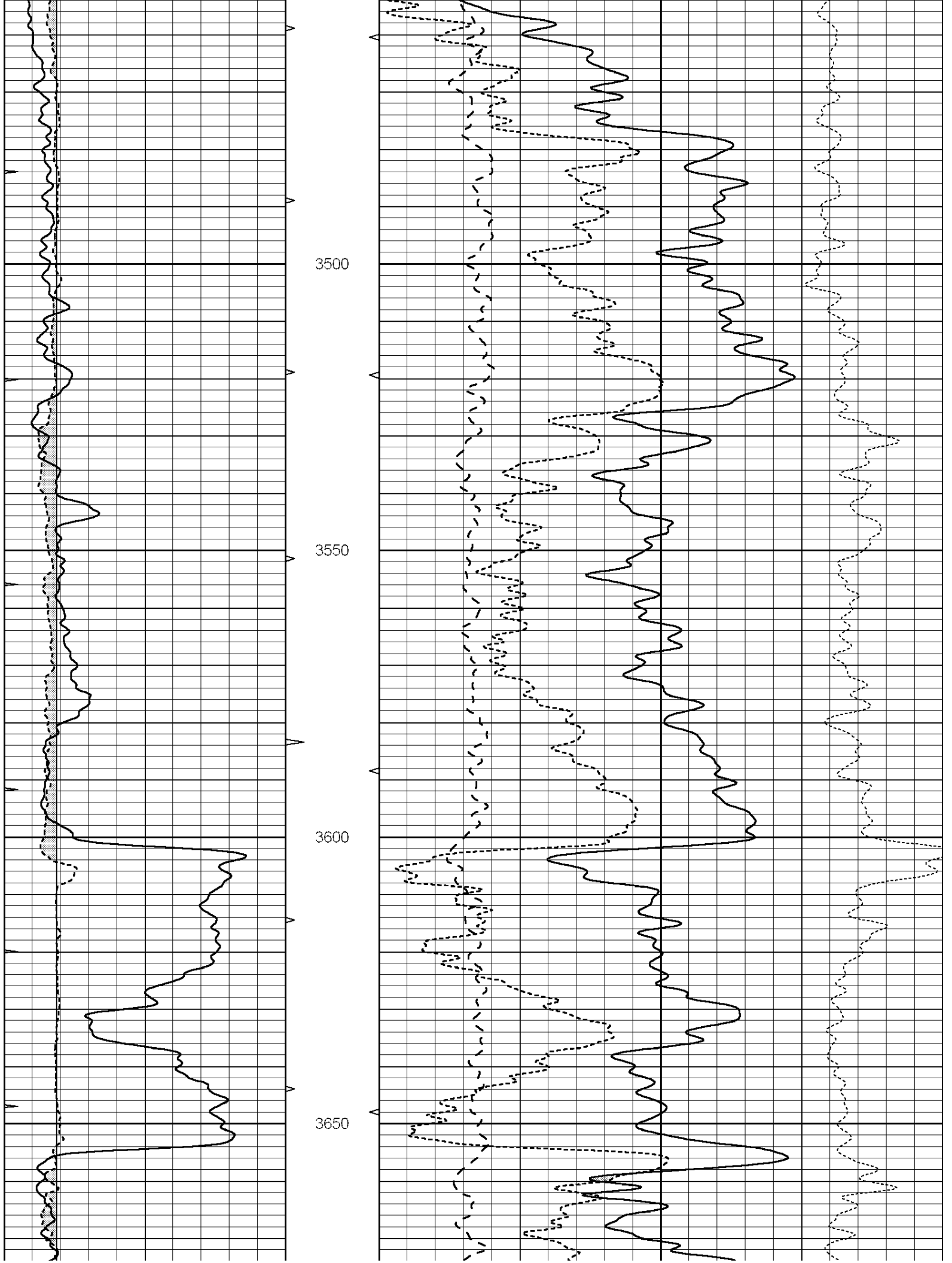
3100

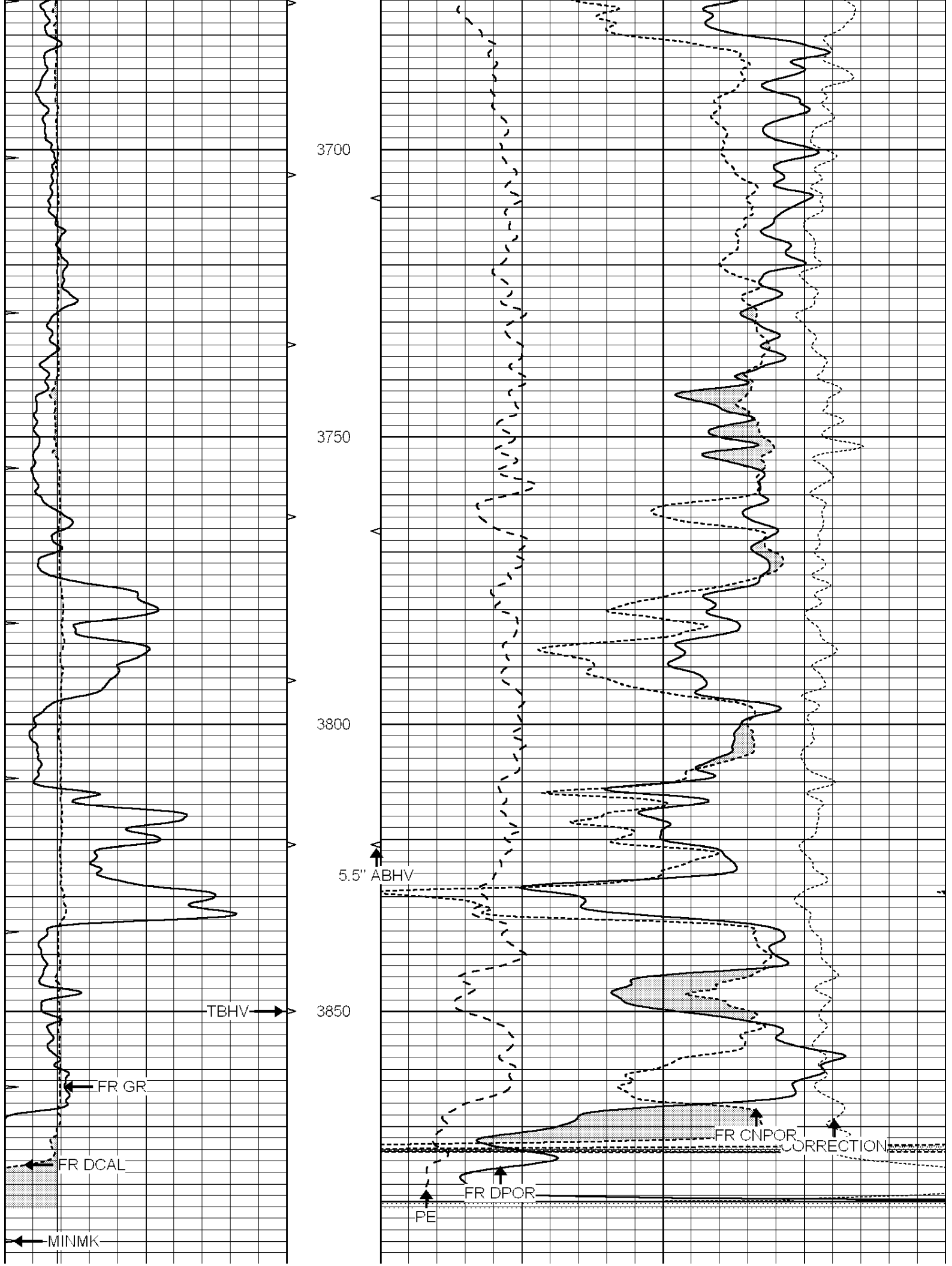
3150

3200

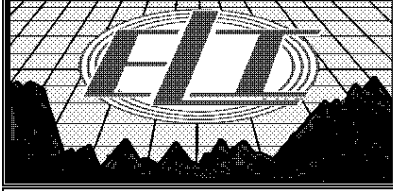








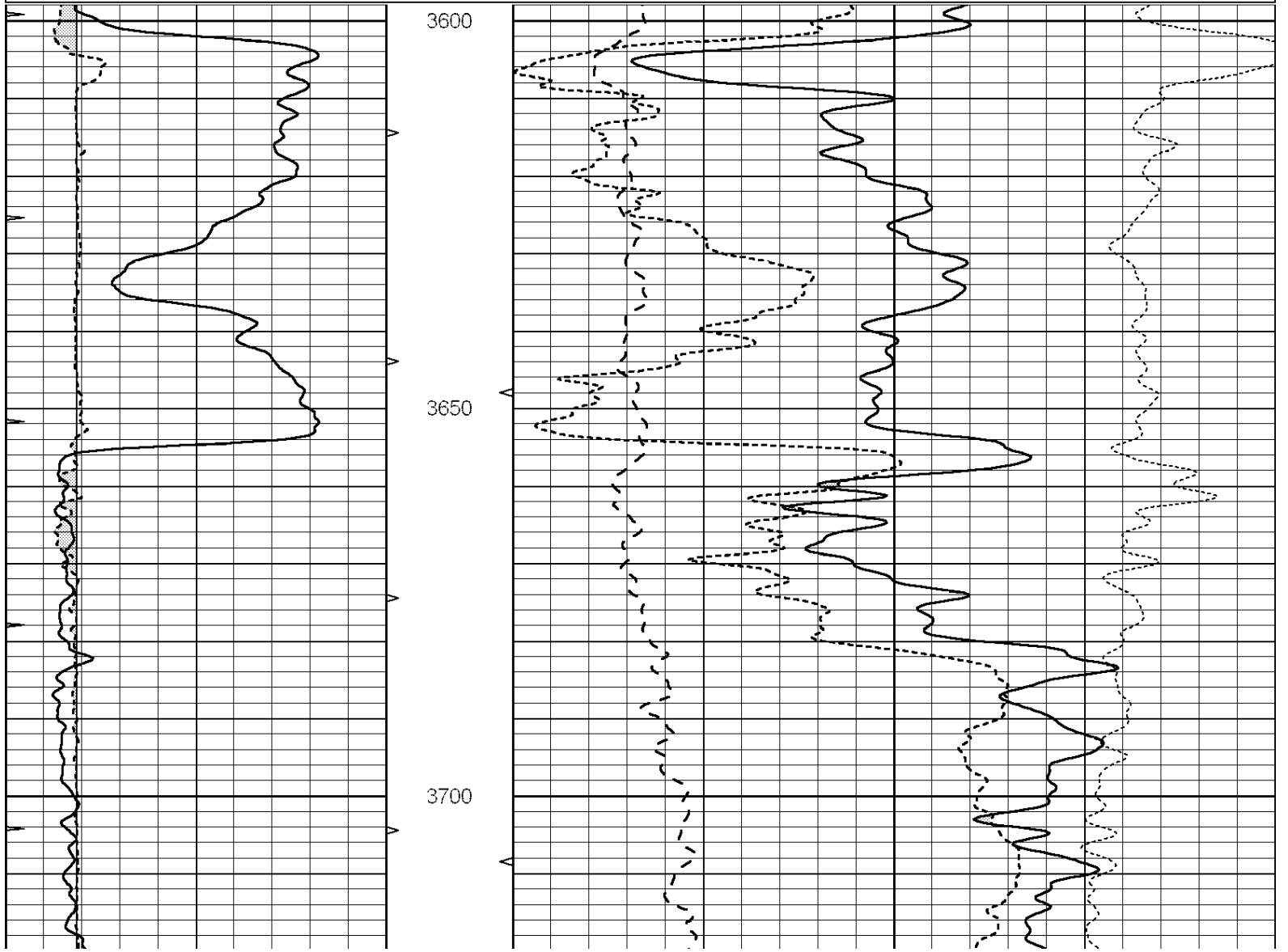
				3900					LTD 3901				
0	GAMMA RAY (GAPI)	150	ABHV	30					COMPENSATED DENSITY (pu)				-10
6	CALIPER (in)	16	10 (ft3)	0	30				COMPENSATED NEUTRON (pu)				-10
0	MINMK	20	TBHV	0		PE	10	-0.25	CORRECTION (g/cc)				0.25
			0 (ft3)	10									

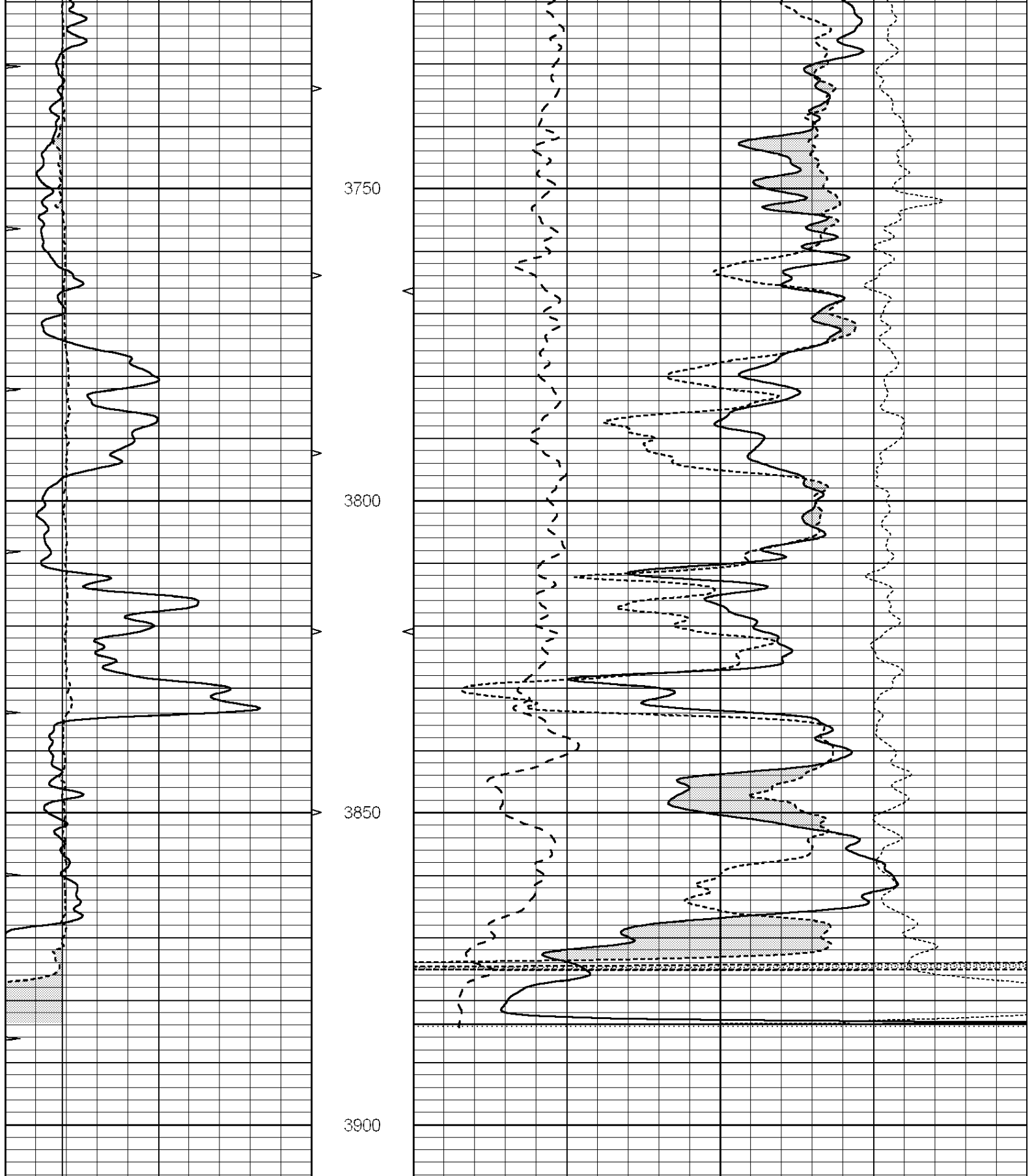


REPEAT SECTION

Database File: 3342pe.db
 Dataset Pathname: pass2.9
 Presentation Format: ldt_neu
 Dataset Creation: Mon Feb 18 21:42:47 2019
 Charted by: Depth in Feet scaled 1:240

0	GAMMA RAY (GAPI)	150	ABHV	30					COMPENSATED DENSITY (pu)				-10
6	CALIPER (in)	16	10 (ft3)	0	30				COMPENSATED NEUTRON (pu)				-10
0	MINMK	20	TBHV	0		PE	10	-0.25	CORRECTION (g/cc)				0.25
			0 (ft3)	10									





0	GAMMA RAY (GAPI)	150	ABHV	30	COMPENSATED DENSITY (pu)	-10
6	CALIPER (in)	16	10 (ft3)	0	COMPENSATED NEUTRON (pu)	-10
0	MINMK	20	TBHV	0	PE	10 -0.25
			0 (ft3)	10	CORRECTION (g/cc)	0.25

Dual Induction Calibration Report

Serial-Model: PROBE7-DILG
 Surface Cal Performed: Wed Aug 30 00:06:33 2017
 Downhole Cal Performed: Mon Jul 28 12:02:56 2008
 After Survey Verification Performed: Mon Jul 28 12:02:56 2008

Surface Calibration

Loop:	Readings			References			Results	
	Air	Loop		Air	Loop		m	b
Deep	-0.014	0.629	V	0.000	400.000	mmho/m	620.000	0.000
Medium	0.039	0.728	V	0.000	464.000	mmho/m	675.000	-44.000
Internal:	Zero	Cal		Zero	Cal		m	b
Deep	0.011	0.610	V	0.000	400.000	mmho/m	667.135	-7.256
Medium	0.005	0.712	V	0.000	464.000	mmho/m	655.677	-3.102

Downhole Calibration

	Readings			References			Results	
	Zero	Cal		Zero	Cal		m'	b'
Deep	0.000	0.000	mmho/m	14.508	388.384	mmho/m	1.000	0.000
Medium	0.000	0.000	mmho/m	166.367	504.400	mmho/m	1.000	0.000
LL3		7.500	V		1400.000	Ohm-m		
		0.000	V		20.000	Ohm-m		
		-7.200	V		4000.000	mmho-m		

After Survey Verification

	Readings			Targets			Results	
	Zero	Cal		Zero	Cal		m'	b'
Deep	0.000	0.000	mmho/m	0.000	0.000	mmho/m	0.000	0.000
Medium	0.000	0.000	mmho/m	0.000	0.000	mmho/m	0.000	0.000
LL3		1.000	Ohm-m		1.000	Ohm-m		
		0.000	Ohm-m		0.000	Ohm-m		
		1.000	mmho-m		1.000	mmho-m		

Litho Density Calibration Report

Serial: 002 Model: PRB

Master Calibration

Performed Mon Aug 21 11:27:42 2017

	Background	Magnesium	Aluminum	Sandstone	
Window 1	837.1	10632.5	2945.1	12110.1	cps
Window 2	772.0	9117.4	2570.1	10197.3	cps
Window 3	631.7	4669.0	1481.9	5042.9	cps
Window 4	187.0	187.5	185.9	189.9	cps
Long Space	0.0	8345.4	1798.1	9425.3	cps
Short Space	1.1	1927.9	1285.9	2050.2	cps
Rho		1.7100	2.5960	1.3800	g/cc
Pe		0.0000	2.5700	1.5500	
Rib Angle	: 45.2	Rib Slope	: 1.008	Density/Spine Ratio	: 0.558
Spine Angle	: 75.2	Spine Slope	: 3.790	Spine Intercept	: -19.6

Before Survey Verification

Performed Wed Dec 31 18:00:00 1969

Window 1	0.0	0.0	0.0	0.0	cps
Window 2	0.0	0.0	0.0	0.0	cps
Window 3	0.0	0.0	0.0	0.0	cps
Window 4	0.0	0.0	0.0	0.0	cps
Long Space	0.0	0.0	0.0	0.0	cps
Short Space	0.0	0.0	0.0	0.0	cps
Measured Rho		0.0000	0.0000	0.0000	g/cc
Measured Correction		0.0000	0.0000	0.0000	g/cc
Measured Pe			0.0000	0.0000	

After Survey Verification

Performed Wed Dec 31 18:00:00 1969

Window 1	0.0	0.0	0.0	0.0	cps
Window 2	0.0	0.0	0.0	0.0	cps
Window 3	0.0	0.0	0.0	0.0	cps
Window 4	0.0	0.0	0.0	0.0	cps
Long Space	0.0	0.0	0.0	0.0	cps
Short Space	0.0	0.0	0.0	0.0	cps
Measured Rho		0.0000	0.0000	0.0000	g/cc
Measured Correction		0.0000	0.0000	0.0000	g/cc
Measured Pe			0.0000	0.0000	

Compensated Neutron Calibration Report

Serial Number: 070808
Tool Model: Probe

PRE-SURVEY VERIFICATION

Detector	Readings	Measured	Target
Short Space	cps		
Long Space	cps	pu	pu

POST-SURVEY VERIFICATION

Detector	Readings	Measured	Target
Short Space	cps		
Long Space	cps	pu	pu

Gamma Ray Calibration Report

Serial Number: 070558
Tool Model: OPEN_GR
Performed: Wed May 31 00:09:32 2017

Calibrator Value: 1.0 GAPI

Background Reading: 0.0 cps
Calibrator Reading: 1.0 cps

Sensitivity: 0.2800 GAPI/cps