



**MICRO  
LOG**

Company EDISON OPERATING COMPANY, LLC.  
 Well WILD TURKEY#1-7  
 Field KNOCHE WEST  
 County STAFFORD  
 State KANSAS

Company EDISON OPERATING COMPANY, LLC.  
 Well WILD TURKEY#1-7  
 Field KNOCHE WEST  
 County STAFFORD State KANSAS

Location: API # : 15-185-24025-00-00  
 2266' FNL & 2262' FEL  
 SEC 7 TWP 24S RGE 12W  
 Permanent Datum GROUND LEVEL Elevation 1887  
 Log Measured From KELLY BUSHING 10' A.G.L.  
 Drilling Measured From KELLY BUSHING  
 Other Services  
 CDL/CNL/DIL  
 SONIC  
 Elevation  
 K.B. 1897  
 D.F. 1895  
 G.L. 1887

Date	08/16/18
Run Number	TWO
Depth Driller	4125
Depth Logger	4124
Bottom Logged Interval	4104
Top Log Interval	3000
Casing Driller	8 5/8" @ 432
Casing Logger	432
Bit Size	7 7/8"
Type Fluid in Hole	CHEMICAL MUD
Density / Viscosity	9.3/50
pH / Fluid Loss	10.5/11.2
Source of Sample	FLOWLINE
Rm @ Meas. Temp	.40@88
Rmt @ Meas. Temp	.30@88
Rmc @ Meas. Temp	.48@88
Source of Rmf / Rmc	MEASURED
Rm @ BHT	.30@117
Time Circulation Stopped	2 HOURS
Time Logger on Bottom	///
Maximum Recorded Temperature	117F
Equipment Number	1523
Location	HAYS, KANSAS
Recorded By	GUS PFANENSTIEL
Witnessed By	DEREK PATTERSON

<<< Fold Here >>>

All interpretations are opinions based on inferences from electrical or other measurements and we cannot and do not guarantee the accuracy or correctness of any interpretation, and we shall not, except in the case of gross or willful negligence on our part, be liable or responsible for any loss, costs, damages, or expenses incurred or sustained by anyone resulting from any interpretation made by any of our officers, agents or employees. These interpretations are also subject to our general terms and conditions set out in our current Price Schedule.

**Comments**

THANK YOU FOR USING ELI WIRELINE, HAYS, KS. (785) 628-6395

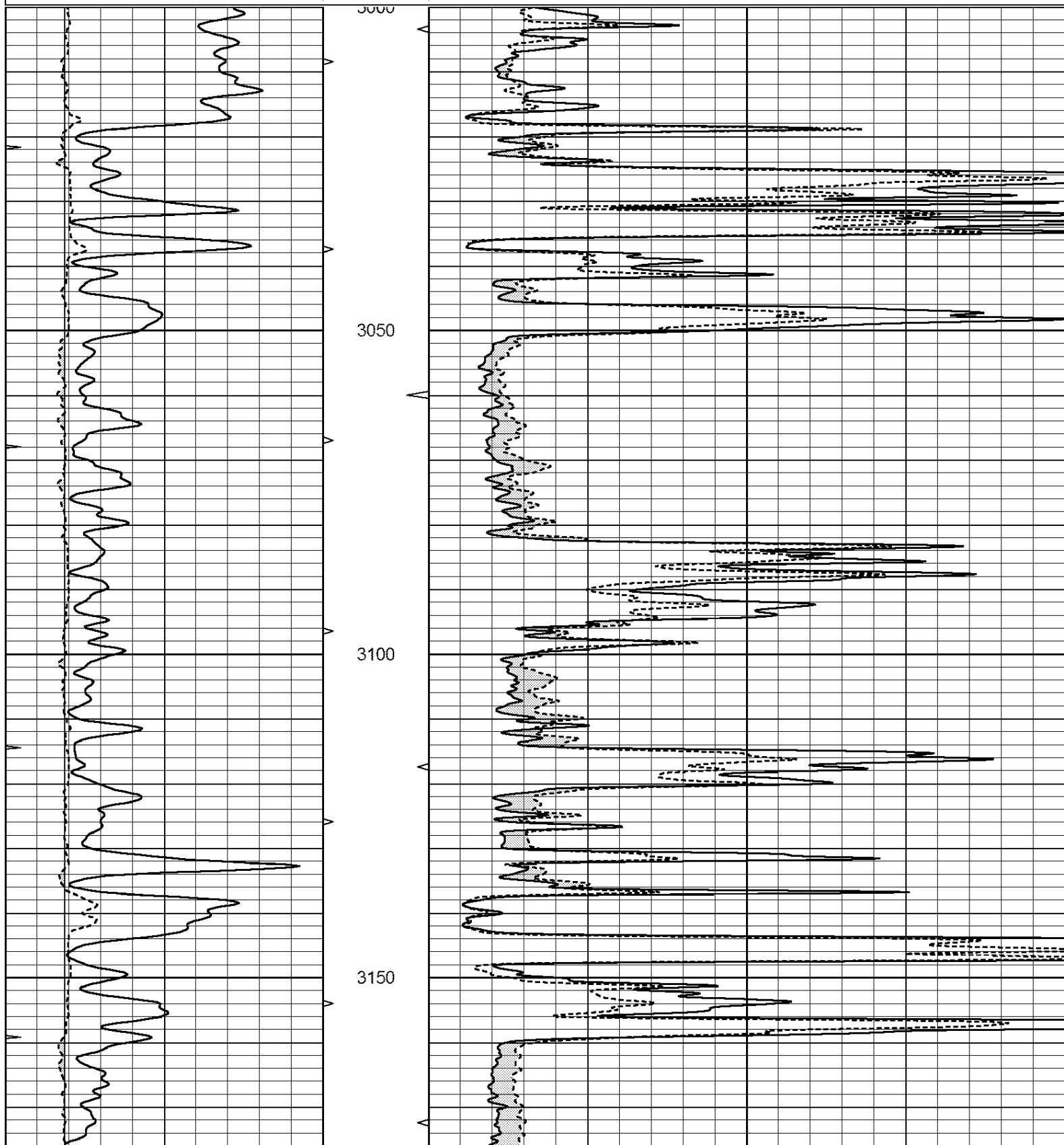
DIRECTIONS  
 SOUTH OF ST. JOHN 1 MILE,  
 EAST 4 MILES TO CURVE SOUTH 1/4,  
 WEST INTO.

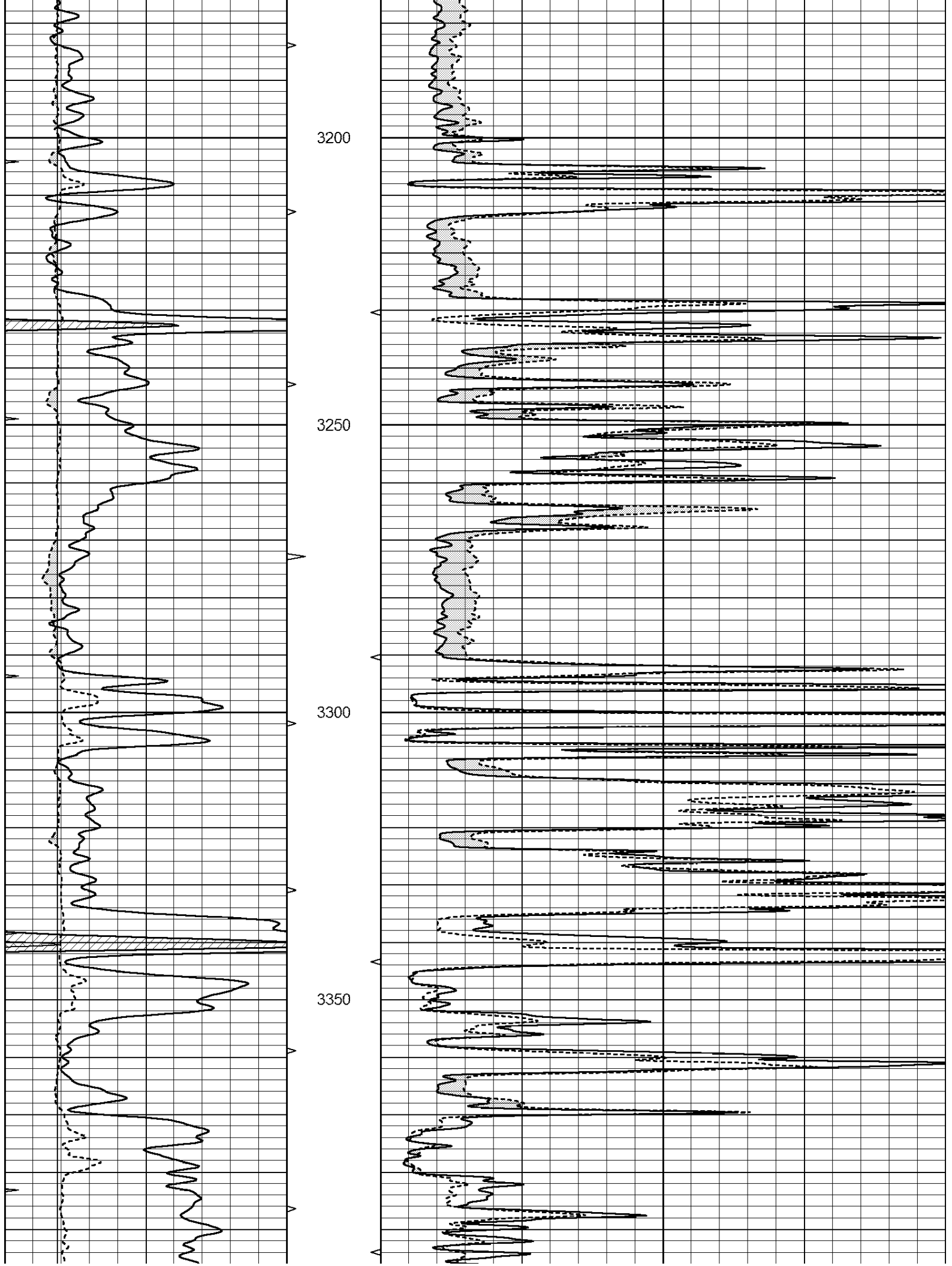


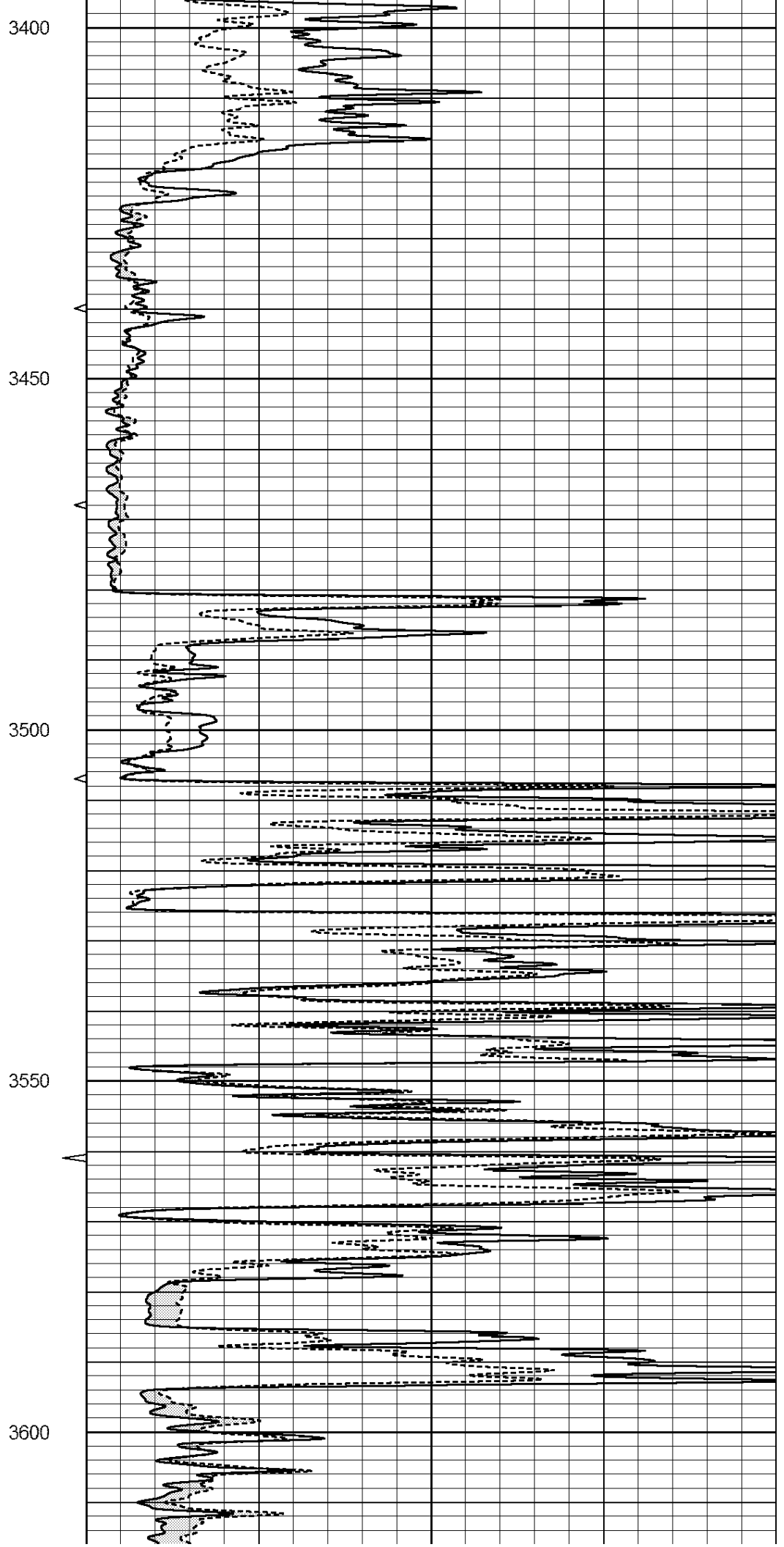
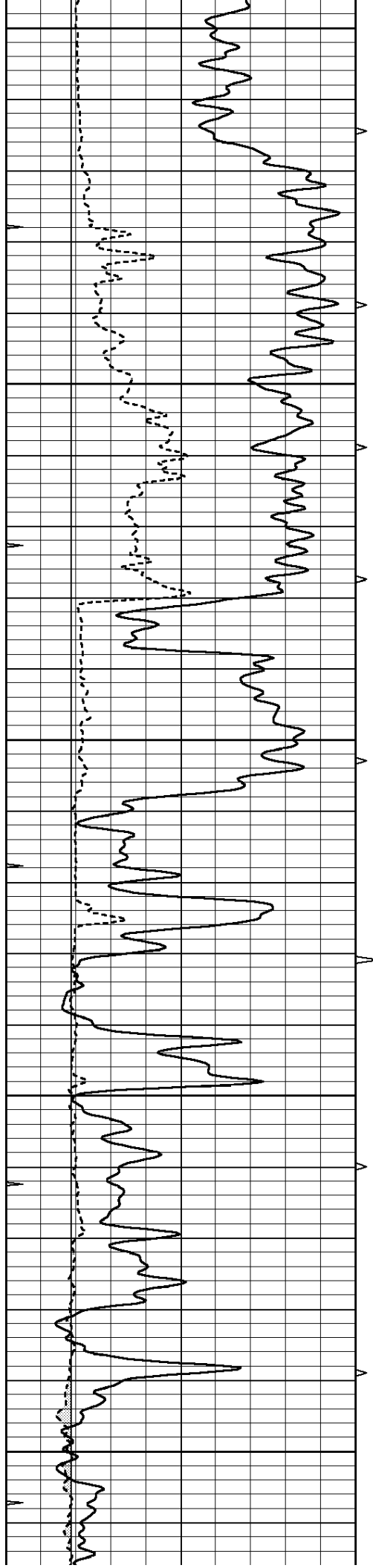
**MAIN PASS**

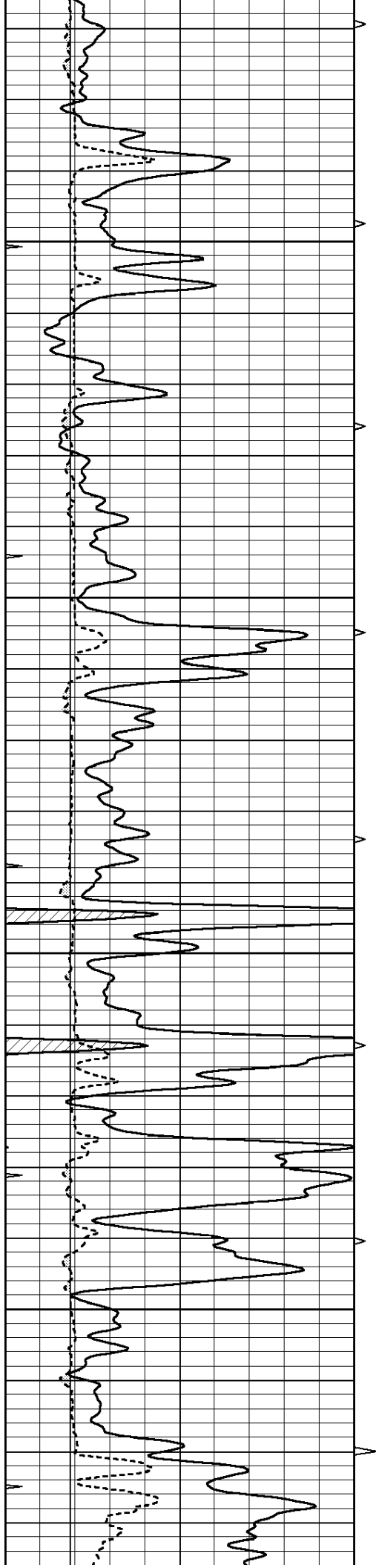
Database File: 2904pe.db  
 Dataset Pathname: pass10.1  
 Presentation Format: \_micro  
 Dataset Creation: Fri Aug 17 00:10:21 2018  
 Charted by: Depth in Feet scaled 1:240

0	GAMMA RAY (GAPI)	150	ABHV	0	MEL1.5 (Ohm-m)	40
6	CALIPER (in)	16	10 (ft3)	0	MEL2.0 (Ohm-m)	40
0	MINMK	20	TBHV			
			0 (ft3)	10		







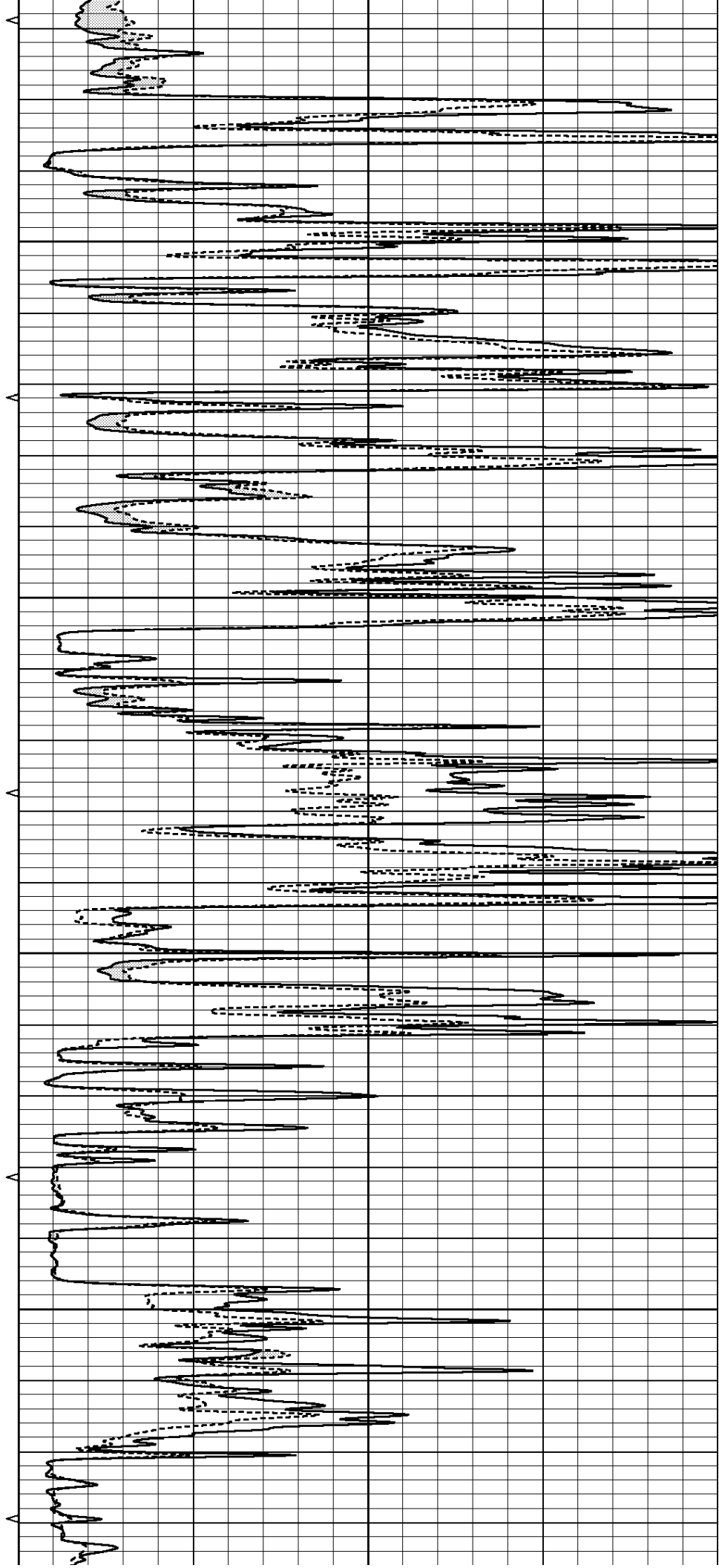


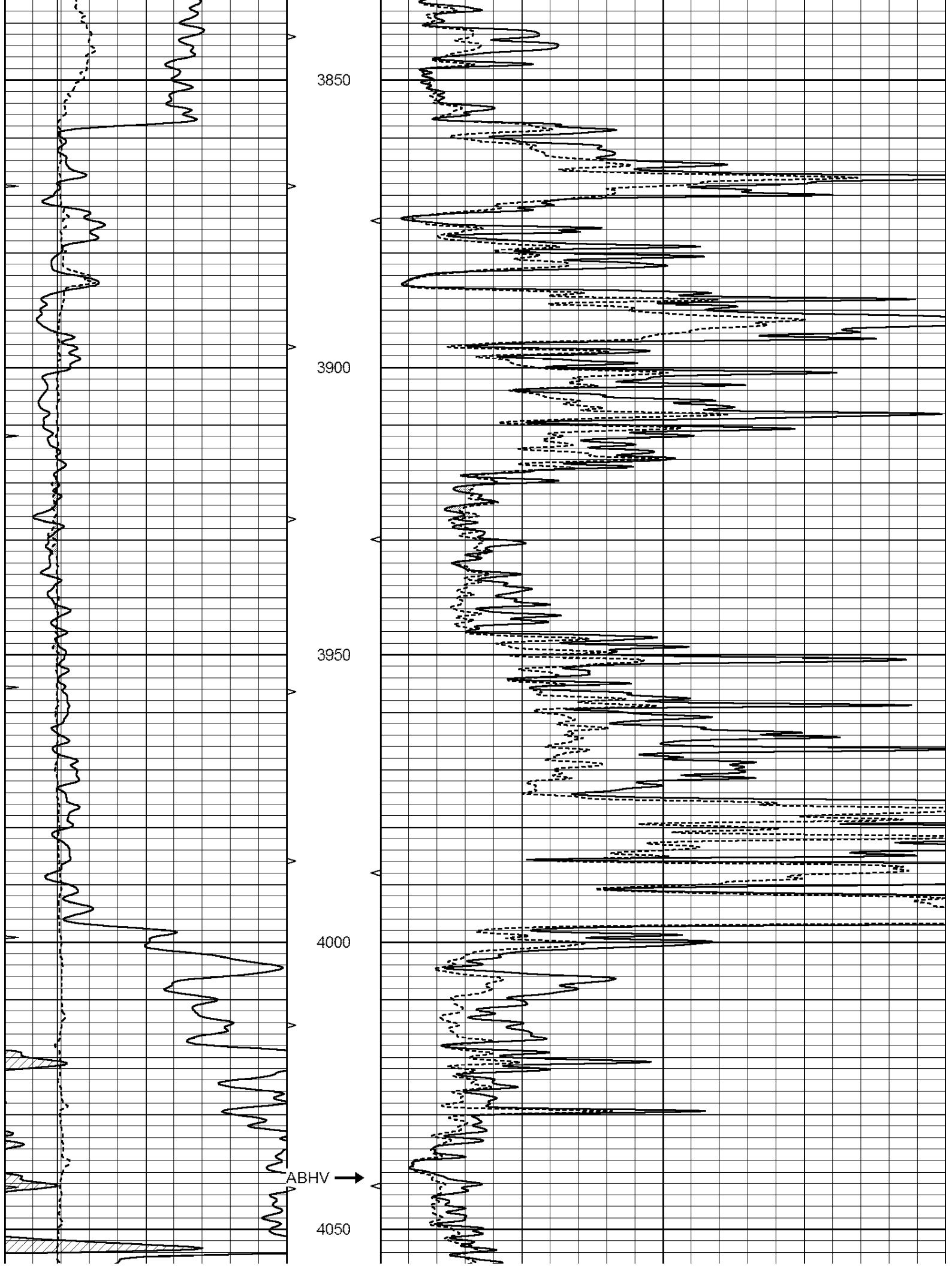
3650

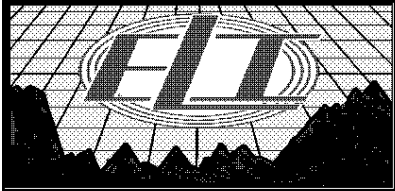
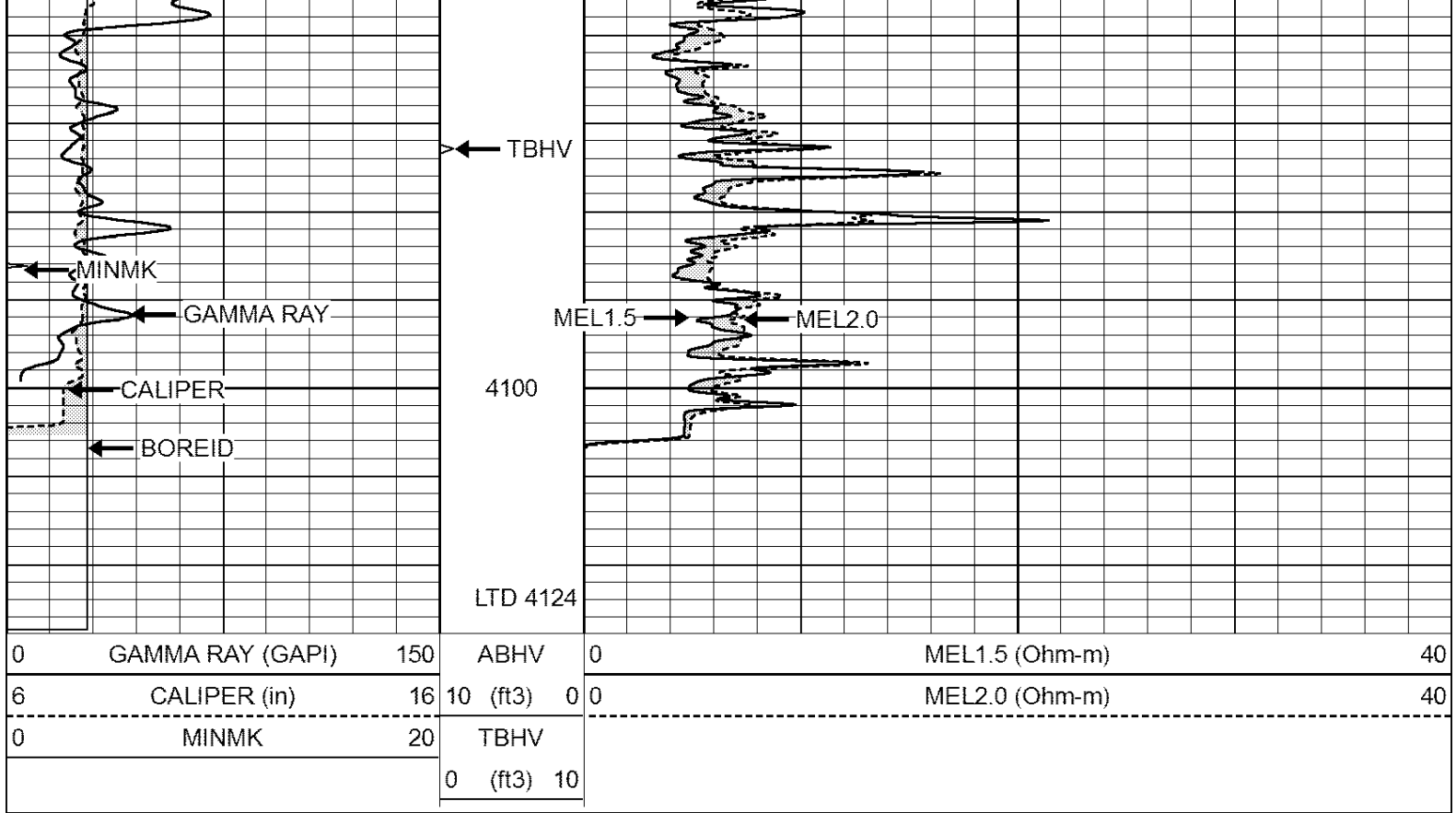
3700

3750

3800



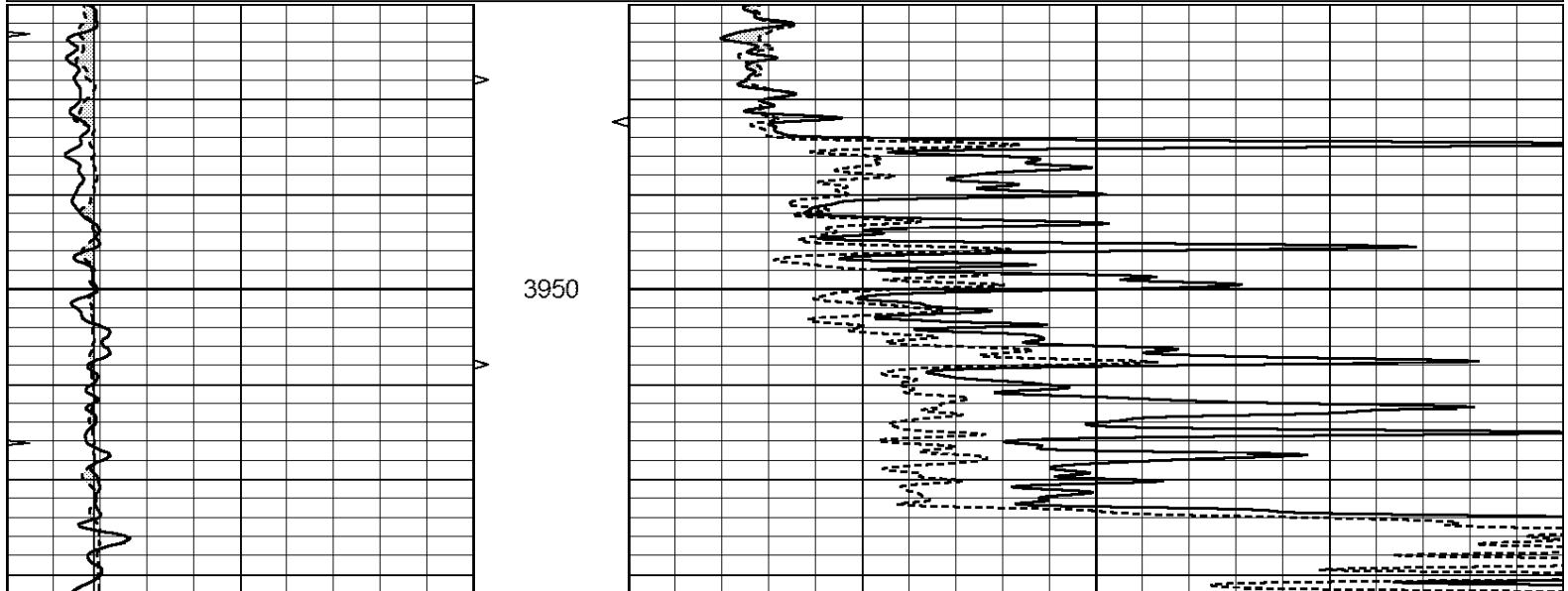


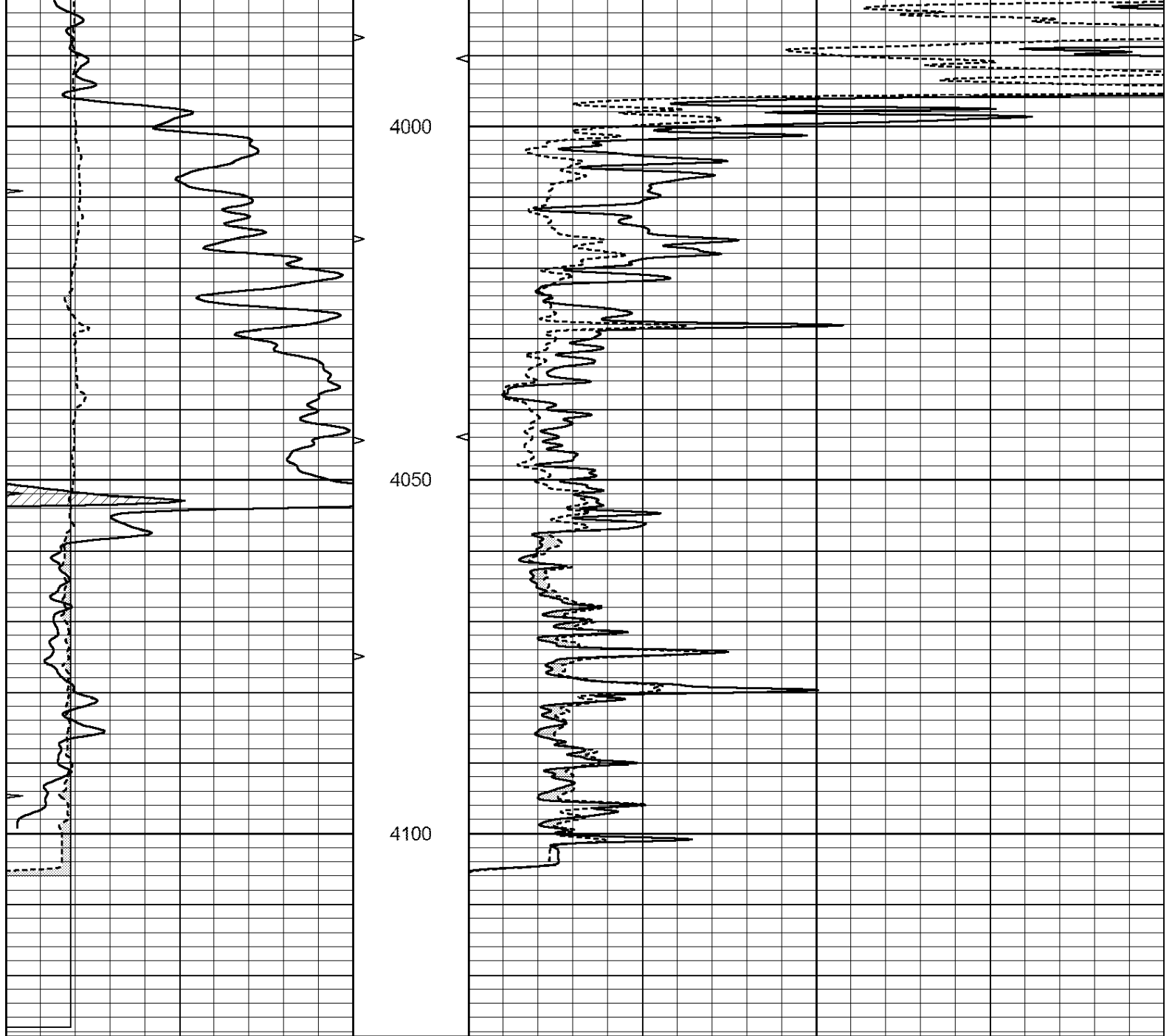


# REPEAT SECTION

Database File: 2904pe.db  
 Dataset Pathname: pass9.1  
 Presentation Format: \_micro  
 Dataset Creation: Thu Aug 16 23:42:17 2018  
 Charted by: Depth in Feet scaled 1:240

0	GAMMA RAY (GAPI)	150	ABHV	0	MEL1.5 (Ohm-m)	40
6	CALIPER (in)	16	10 (ft3)	0	MEL2.0 (Ohm-m)	40
0	MINMK	20	TBHV			
			0 (ft3)	10		





0	GAMMA RAY (GAPI)	150	ABHV	0	MEL1.5 (Ohm-m)	40
6	CALIPER (in)	16	10 (ft3)	0	MEL2.0 (Ohm-m)	40
0	MINMK	20	TBHV			
			0 (ft3)	10		

Calibration Report

Database File: 2904pe.db  
 Dataset Pathname: pass9.1  
 Dataset Creation: Thu Aug 16 23:42:17 2018

MICRO Calibration Report

Serial Number: MICRO5  
 Tool Model: PROBE  
 Performed: Thu Aug 16 21:42:11 2018

Caliper Calibration: Gain=6.774      Offset=5.004

References: Low Cal 7.000      High Cal 15.500

References	1.000	10.000
Readings	1.521	2.776

1.5" Calibration:	Gain=30.334	Offset=0.000
References	Low Cal 0.000	High Cal 20.000
Readings	0.025	1.009

2" Calibration:	Gain=40.390	Offset=0.000
References	Low Cal 0.000	High Cal 20.000
Readings	0.012	1.807

Gamma Ray Calibration Report

Serial Number:	GR5	
Tool Model:	OPEN	
Performed:	Mon Jul 02 20:05:37 2018	
Calibrator Value:	1.0	GAPI
Background Reading:	0.0	cps
Calibrator Reading:	1.0	cps
Sensitivity:	0.8000	GAPI/cps