



SONIC LOG

Company EDISON OPERATING COMPANY, LLC.
 Well WILD TURKEY#1-7
 Field KNOCHE WEST
 County STAFFORD
 State KANSAS

Company EDISON OPERATING COMPANY, LLC.
 Well WILD TURKEY#1-7
 Field KNOCHE WEST
 County STAFFORD State KANSAS

Location: API # : 15-185-24025-00-00
 2266' FNL & 2262' FEL
 SEC 7 TWP 24S RGE 12W
 Permanent Datum GROUND LEVEL Elevation 1887
 Log Measured From KELLY BUSHING 10' A.G.L.
 Drilling Measured From KELLY BUSHING
 Other Services CDL/CNL/DIL MEL
 Elevation K.B. 1897 D.F. 1895 G.L. 1887

Date	08/16/18
Run Number	TWO
Depth Driller	4125
Depth Logger	4124
Bottom Logged Interval	4115
Top Log Interval	00
Casing Driller	8 5/8" @ 432
Casing Logger	432
Bit Size	7 7/8"
Type Fluid in Hole	CHEMICAL MUD
Density / Viscosity	9.3/50
pH / Fluid Loss	10.5/11.2
Source of Sample	FLOWLINE
Rm @ Meas. Temp	.40@88
Rmt @ Meas. Temp	.30@88
Rmc @ Meas. Temp	.48@88
Source of Rmf / Rmc	MEASURED
Rm @ BHT	.30@117
Time Circulation Stopped	2 HOURS
Time Logger on Bottom	///
Maximum Recorded Temperature	117F
Equipment Number	1523
Location	HAYS, KANSAS
Recorded By	GUS PFANENSTIEL
Witnessed By	DEREK PATTERSON

<<< Fold Here >>>

All interpretations are opinions based on inferences from electrical or other measurements and we cannot and do not guarantee the accuracy or correctness of any interpretation, and we shall not, except in the case of gross or willful negligence on our part, be liable or responsible for any loss, costs, damages, or expenses incurred or sustained by anyone resulting from any interpretation made by any of our officers, agents or employees. These interpretations are also subject to our general terms and conditions set out in our current Price Schedule.

Comments

THANK YOU FOR USING ELI WIRELINE, HAYS, KS. (785) 628-6395

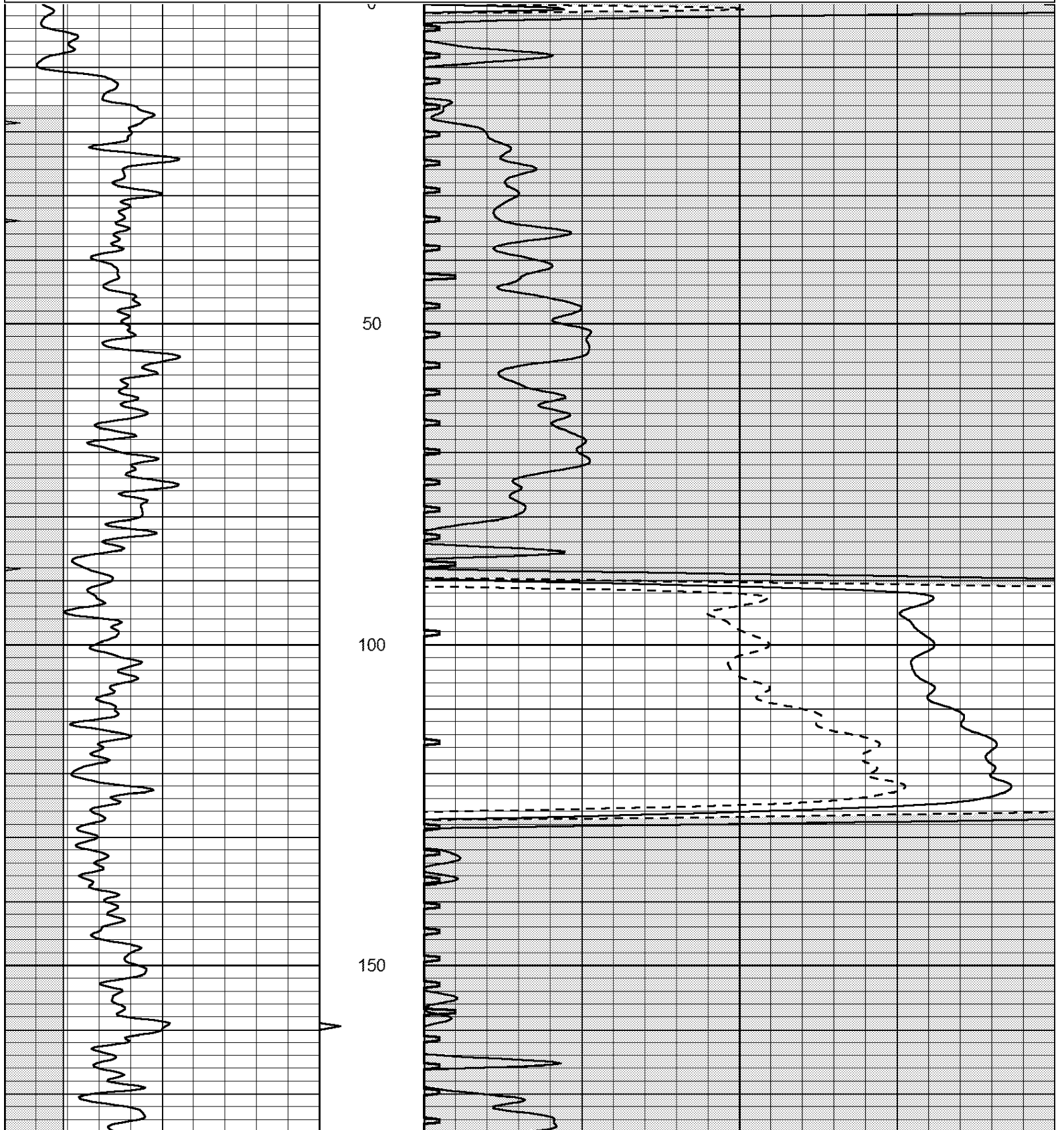
DIRECTIONS
 SOUTH OF ST. JOHN 1 MILE,
 EAST 4 MILES TO CURVE SOUTH 1/4,
 WEST INTO.

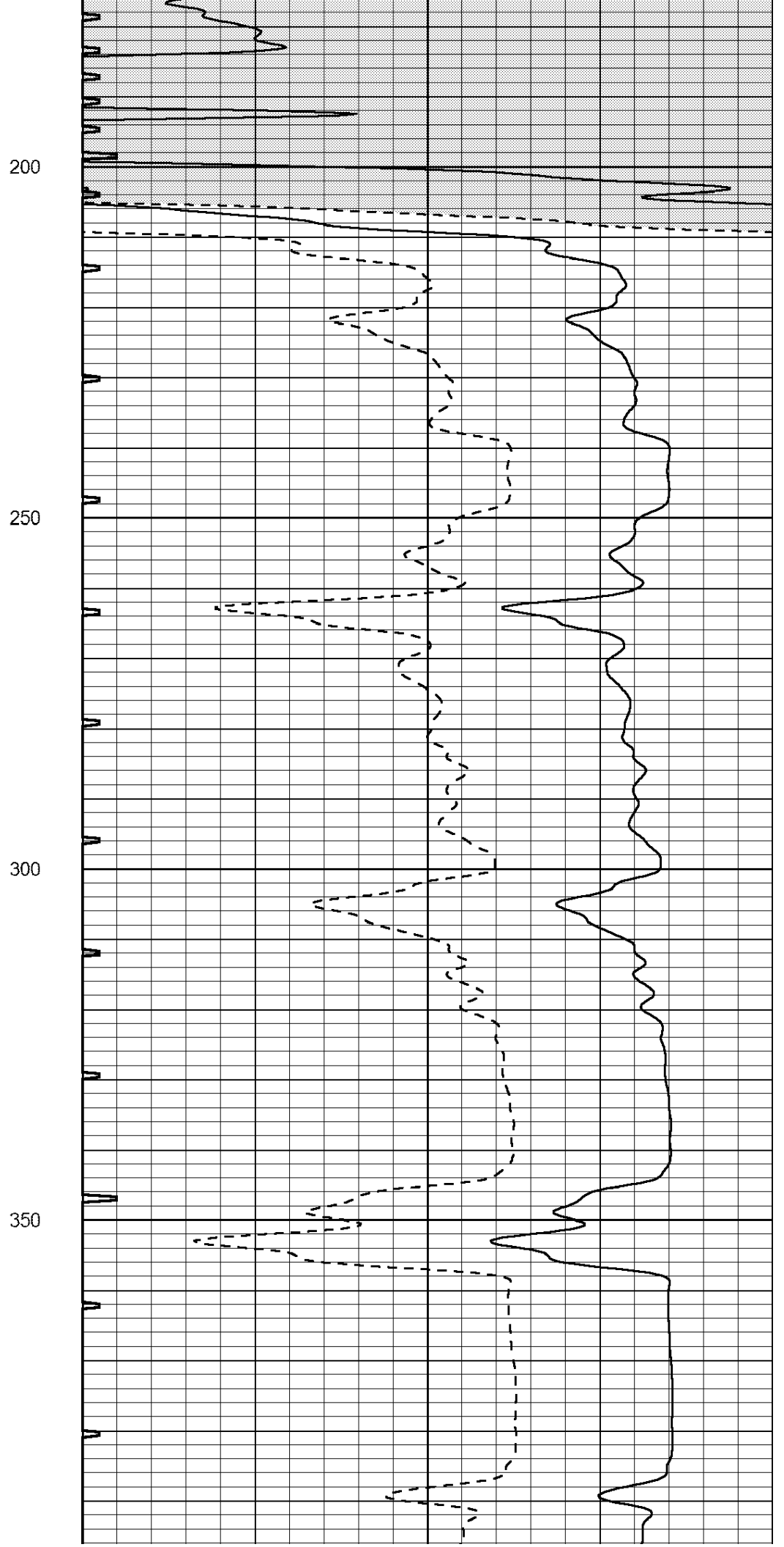
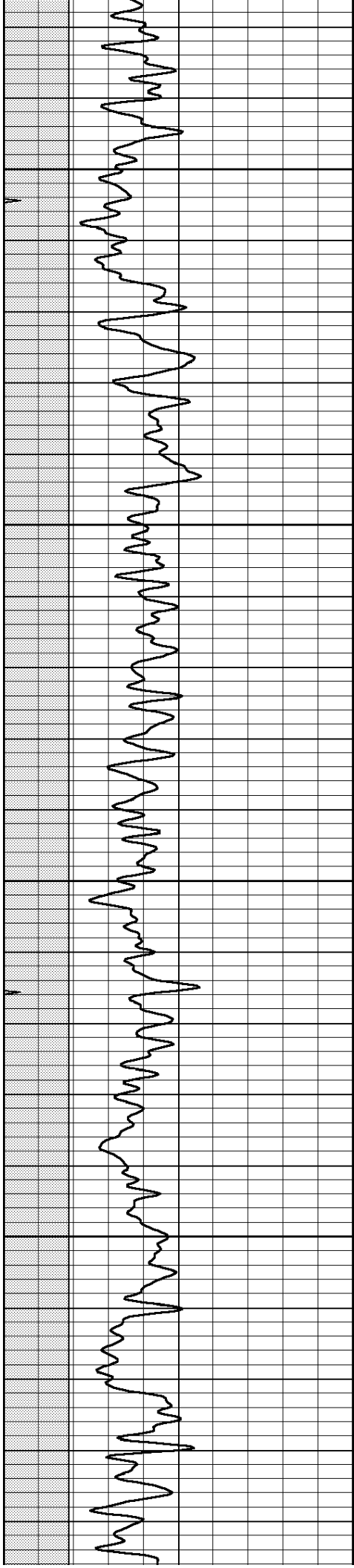


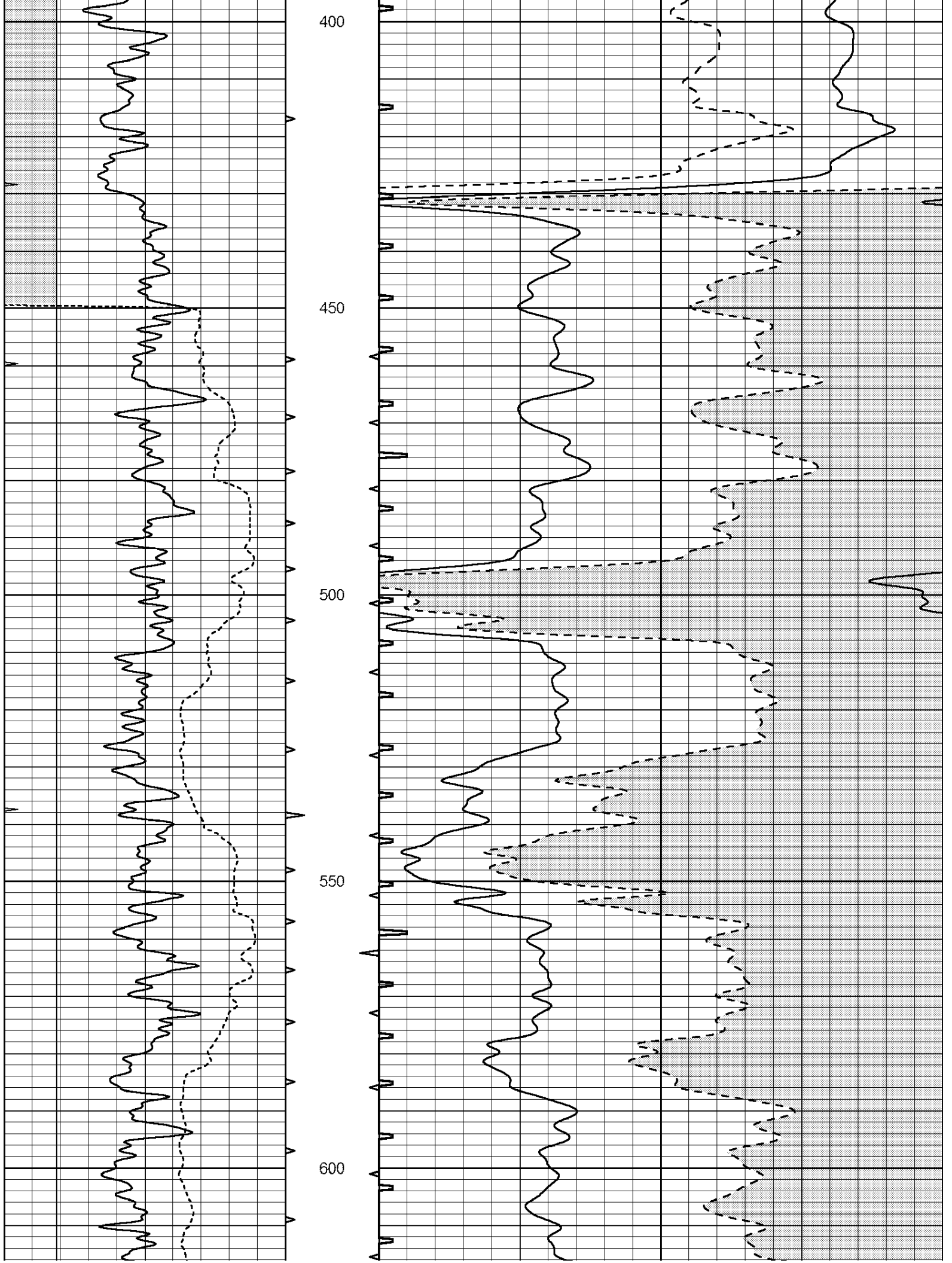
MAIN PASS

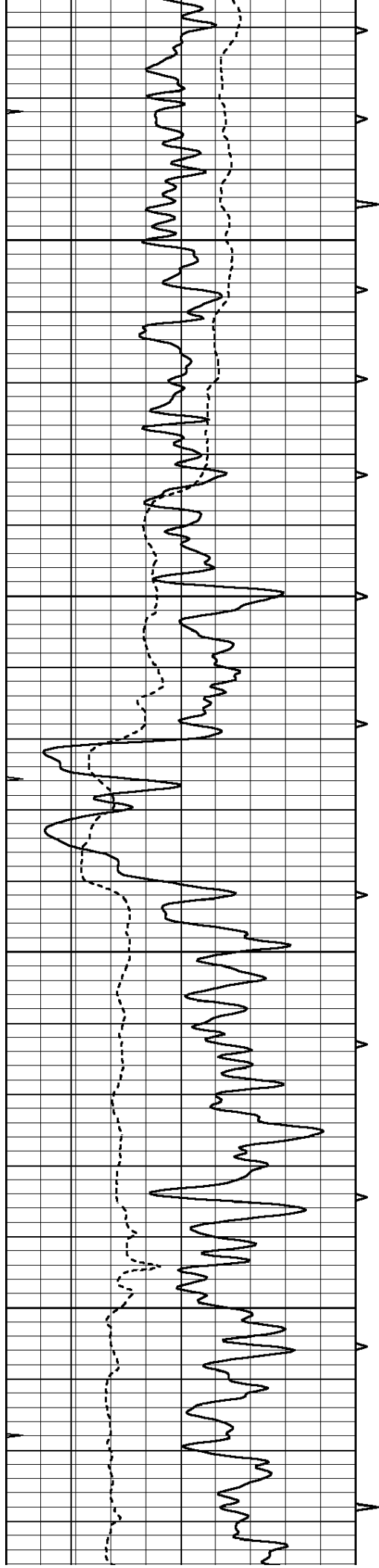
Database File: 2904pe.db
 Dataset Pathname: pass10.1
 Presentation Format: _slt
 Dataset Creation: Fri Aug 17 00:10:21 2018
 Charted by: Depth in Feet scaled 1:240

0	GAMMA RAY (GAPI)	150	ABHV	140	DELTA TIME (usec/ft)	40
6	CALIPER (in)	16	10 (ft3)	0	30	SONIC POROSITY (pu)
0	MINMK	20	TBHV	0	ITT (msec)	20
			0 (ft3)	10		







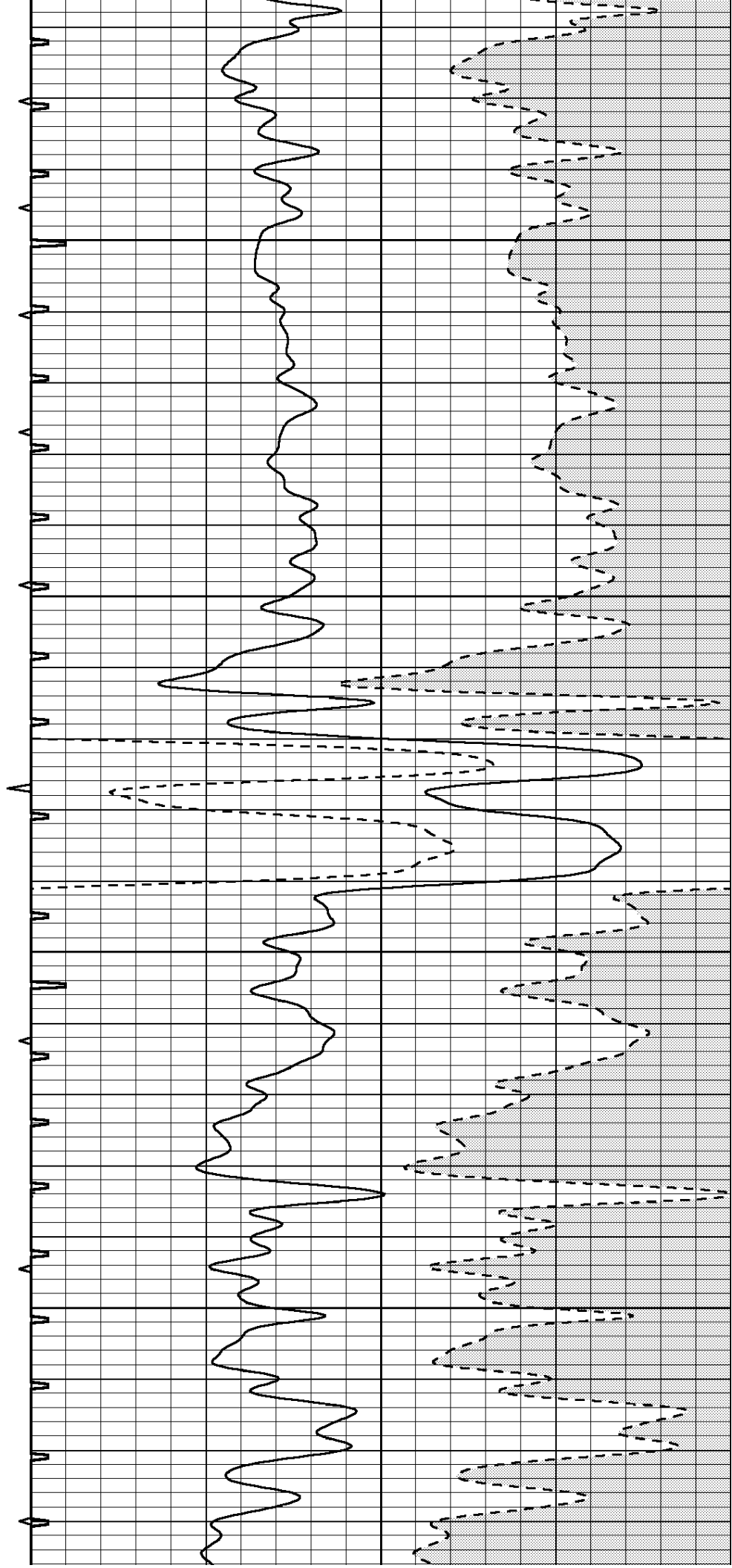


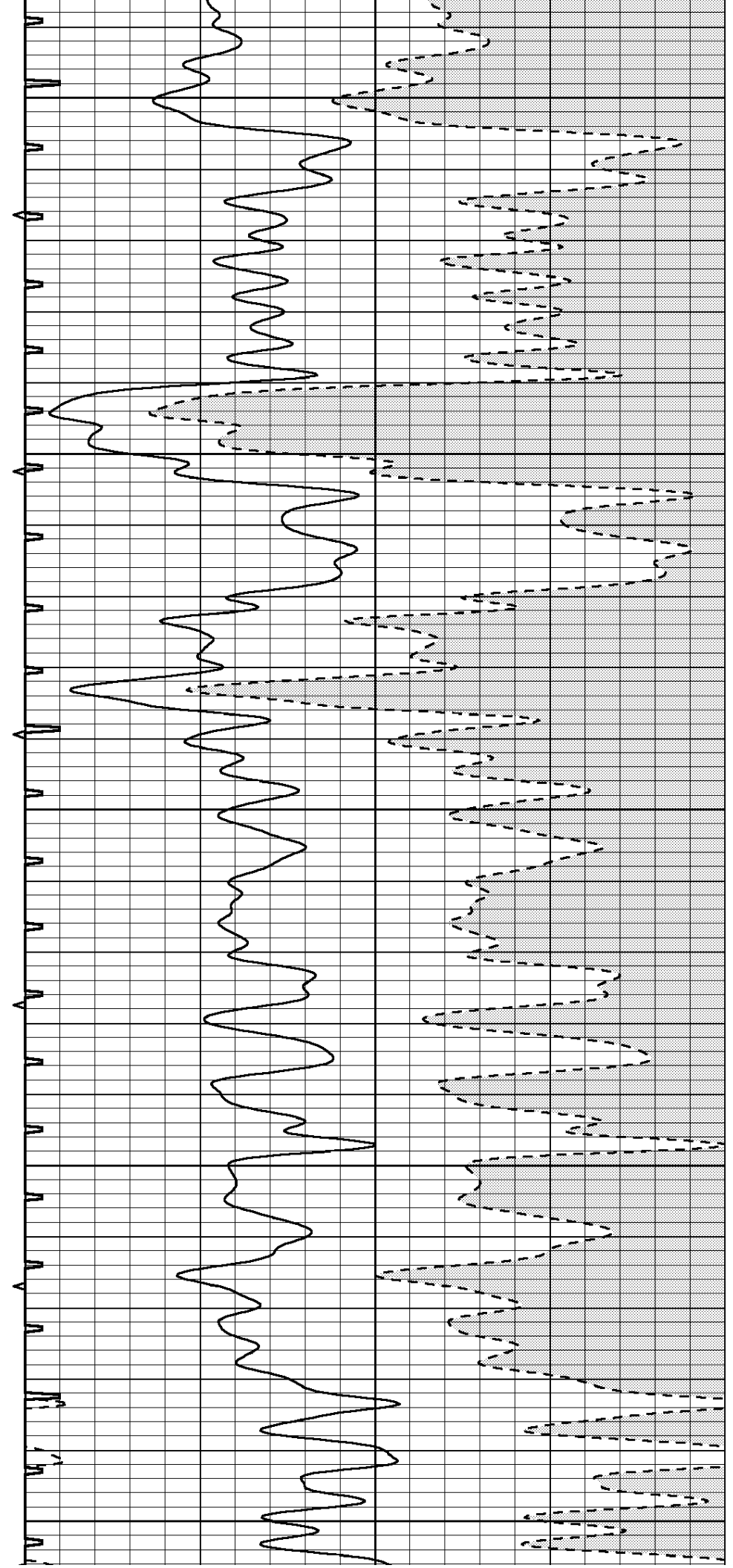
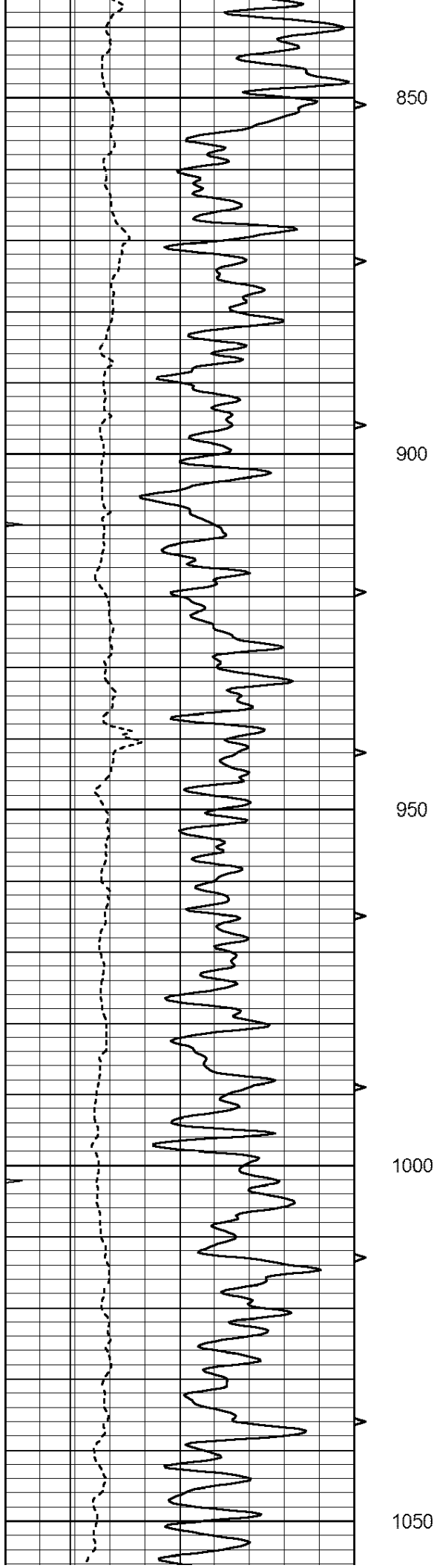
650

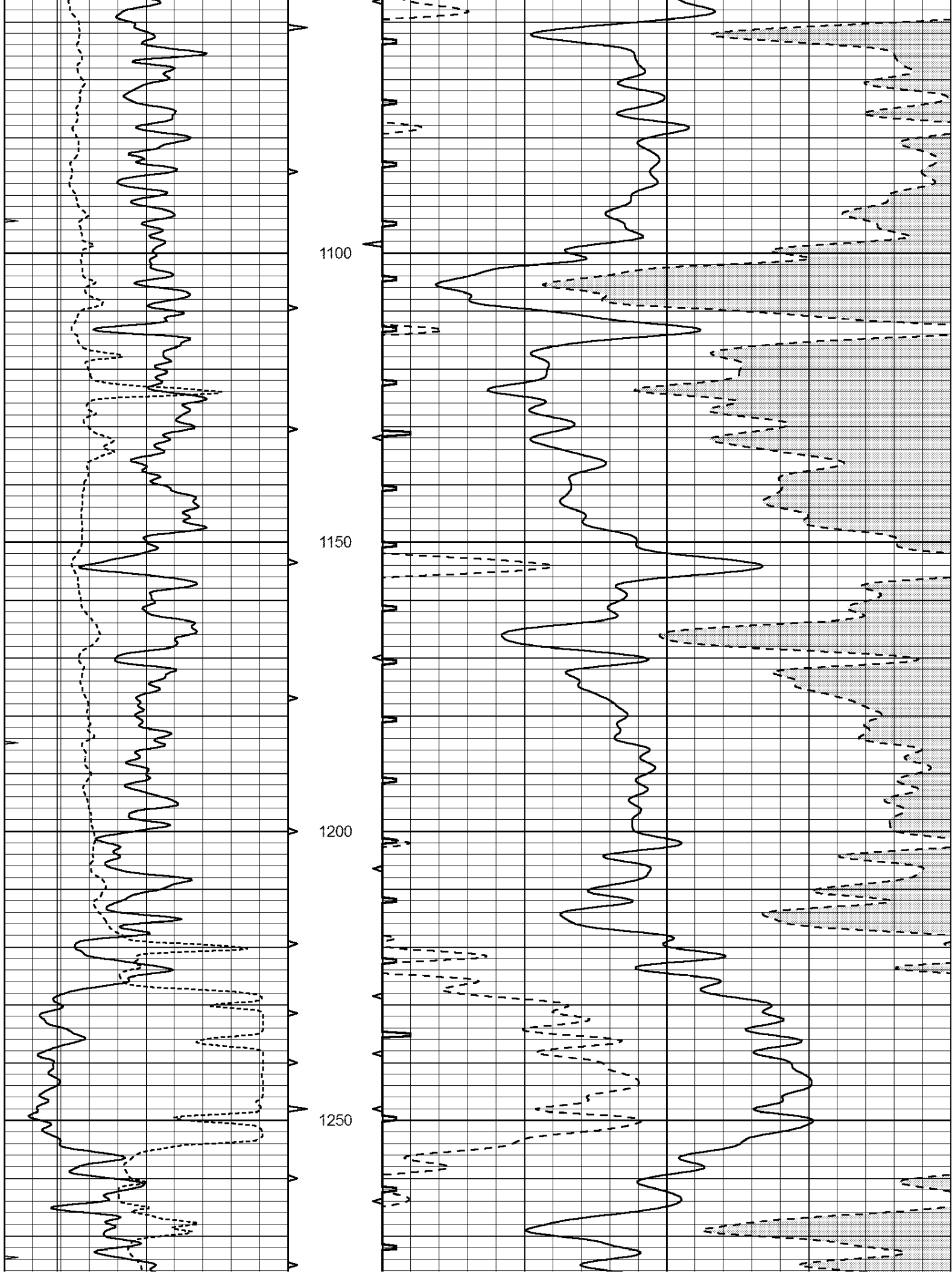
700

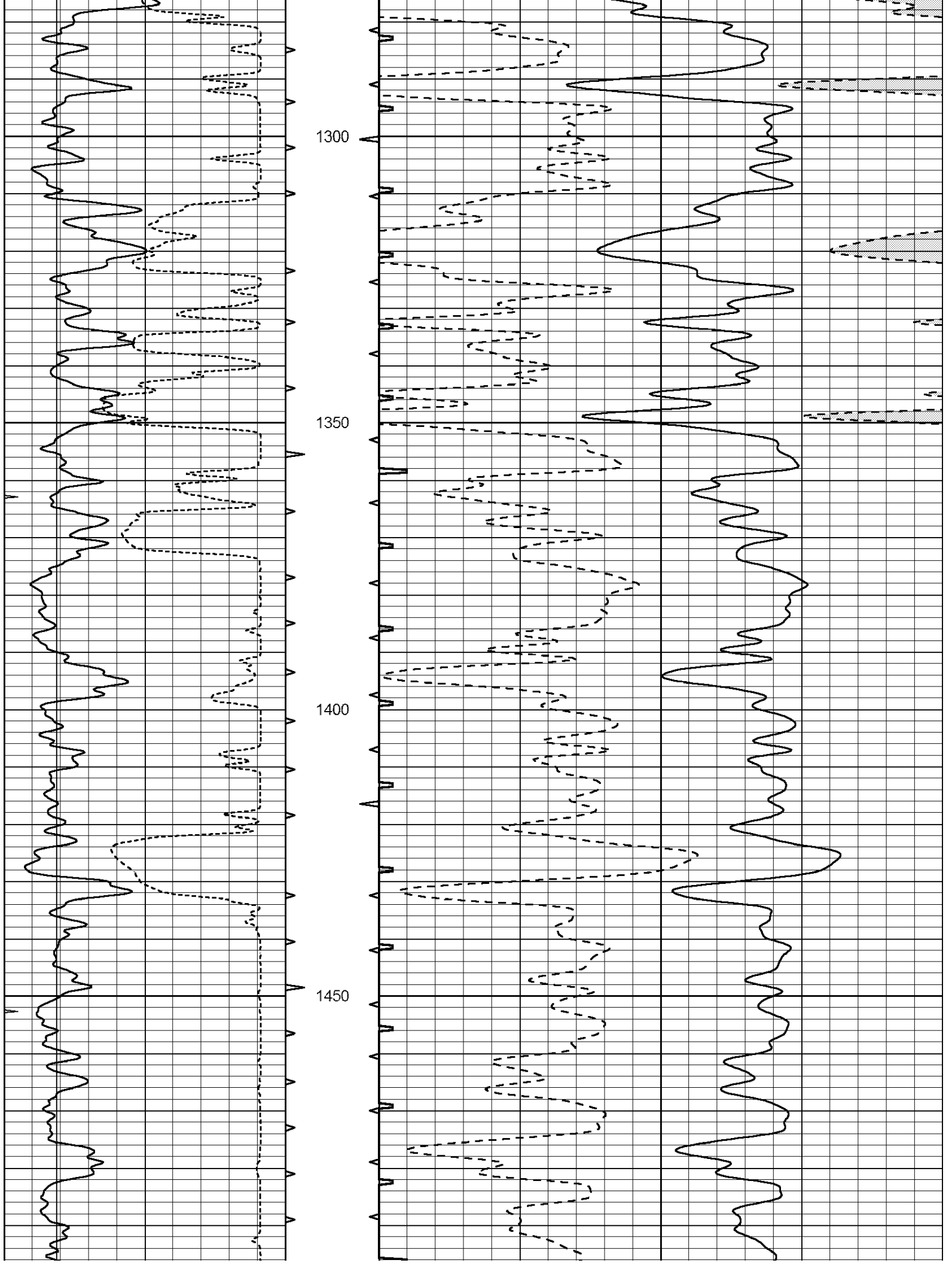
750

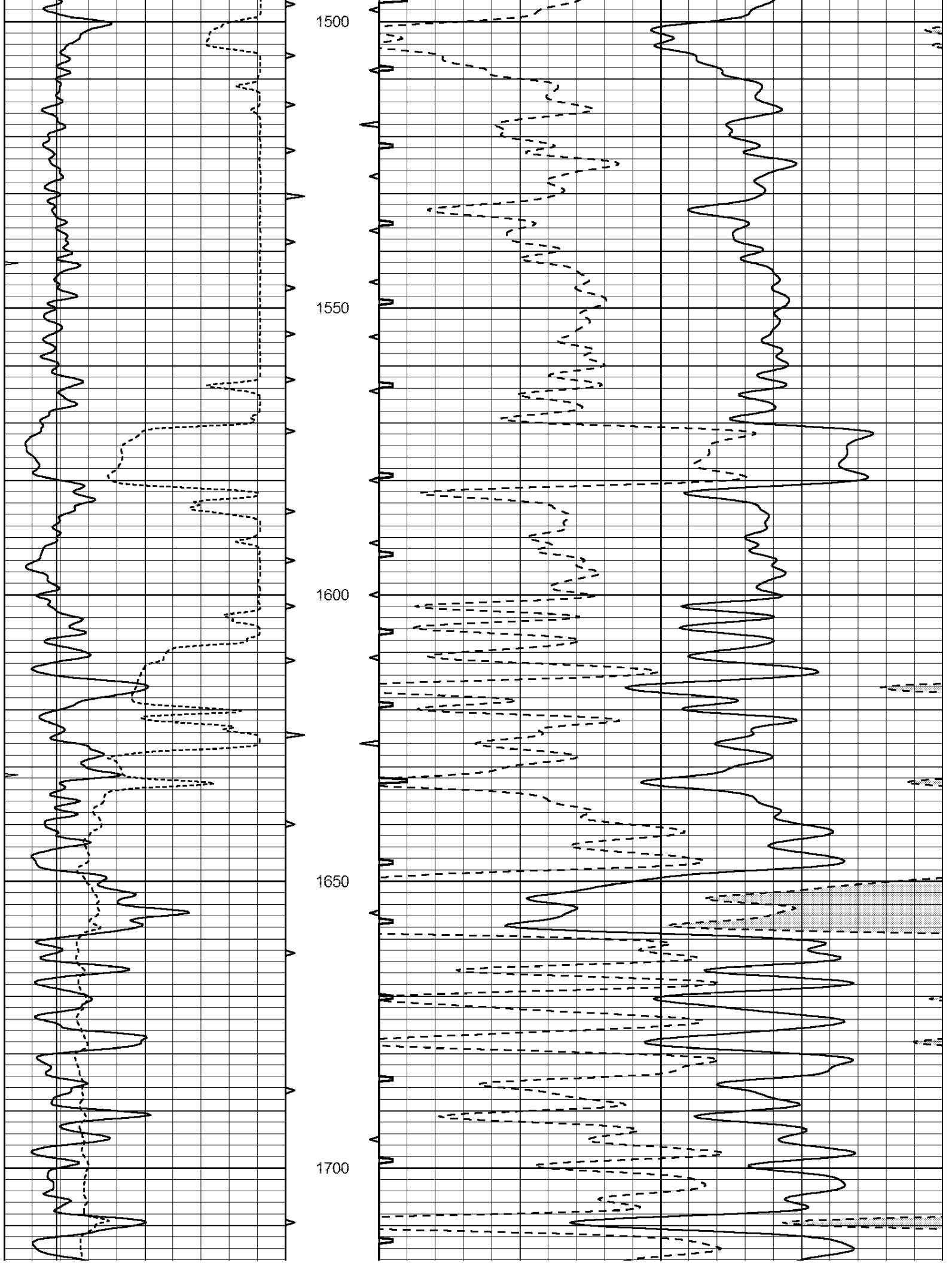
800

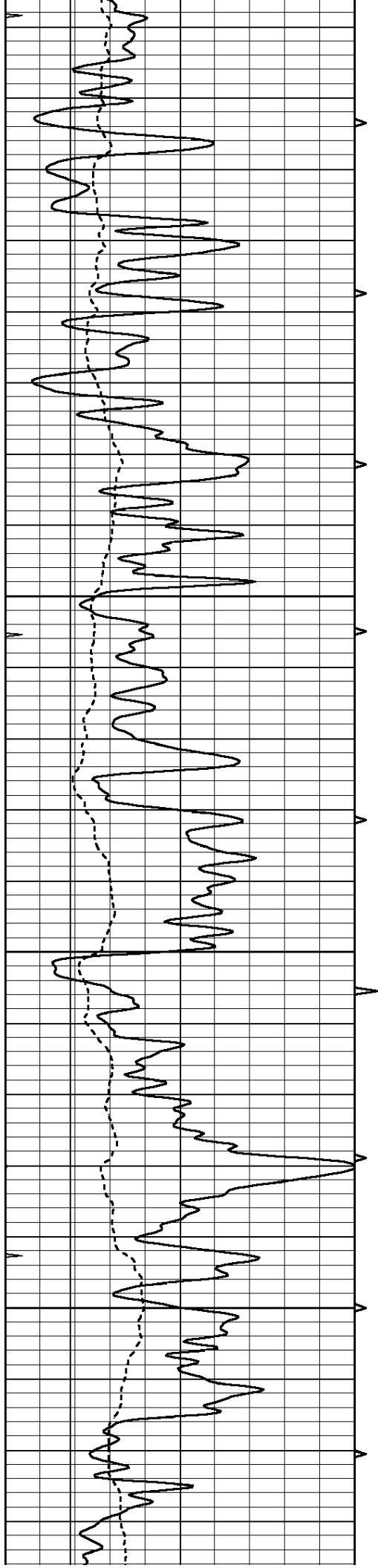










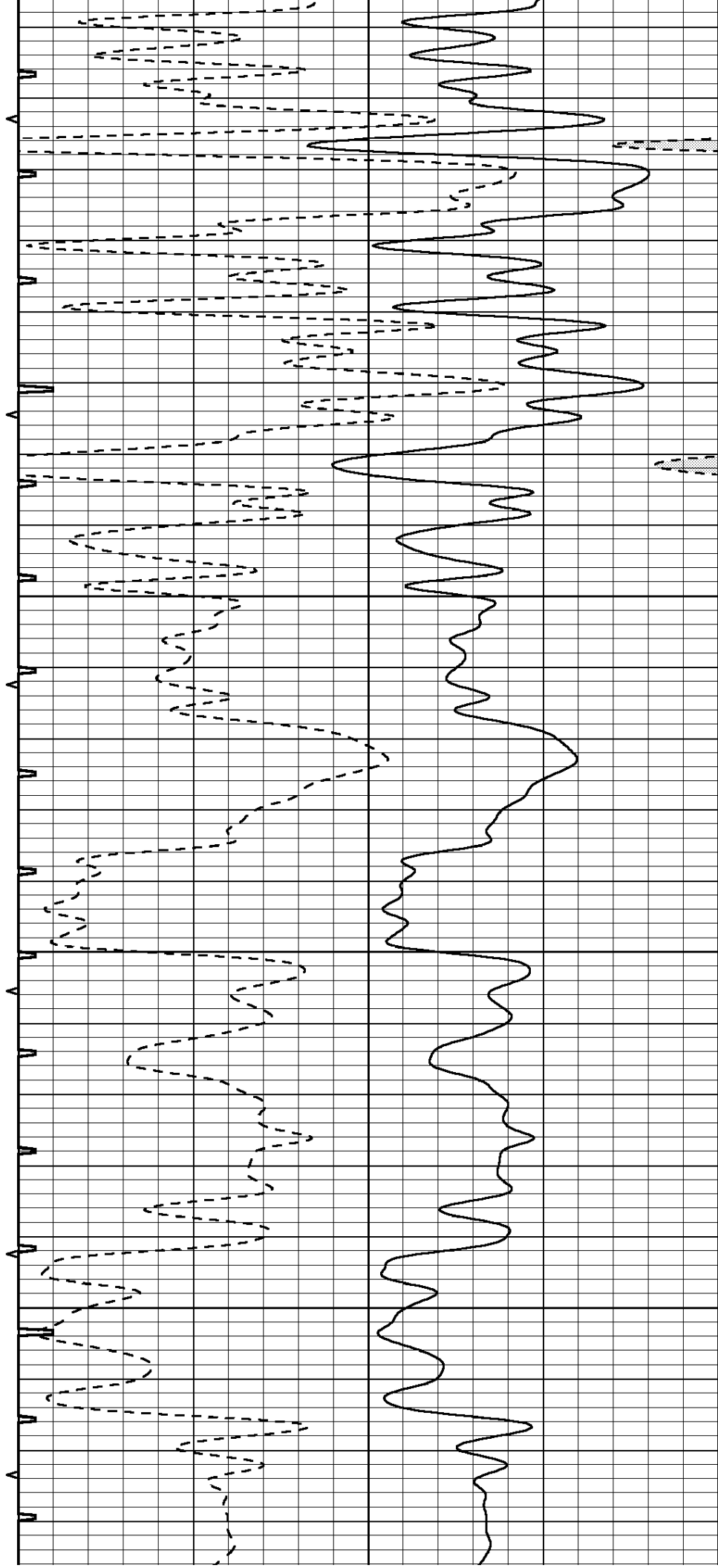


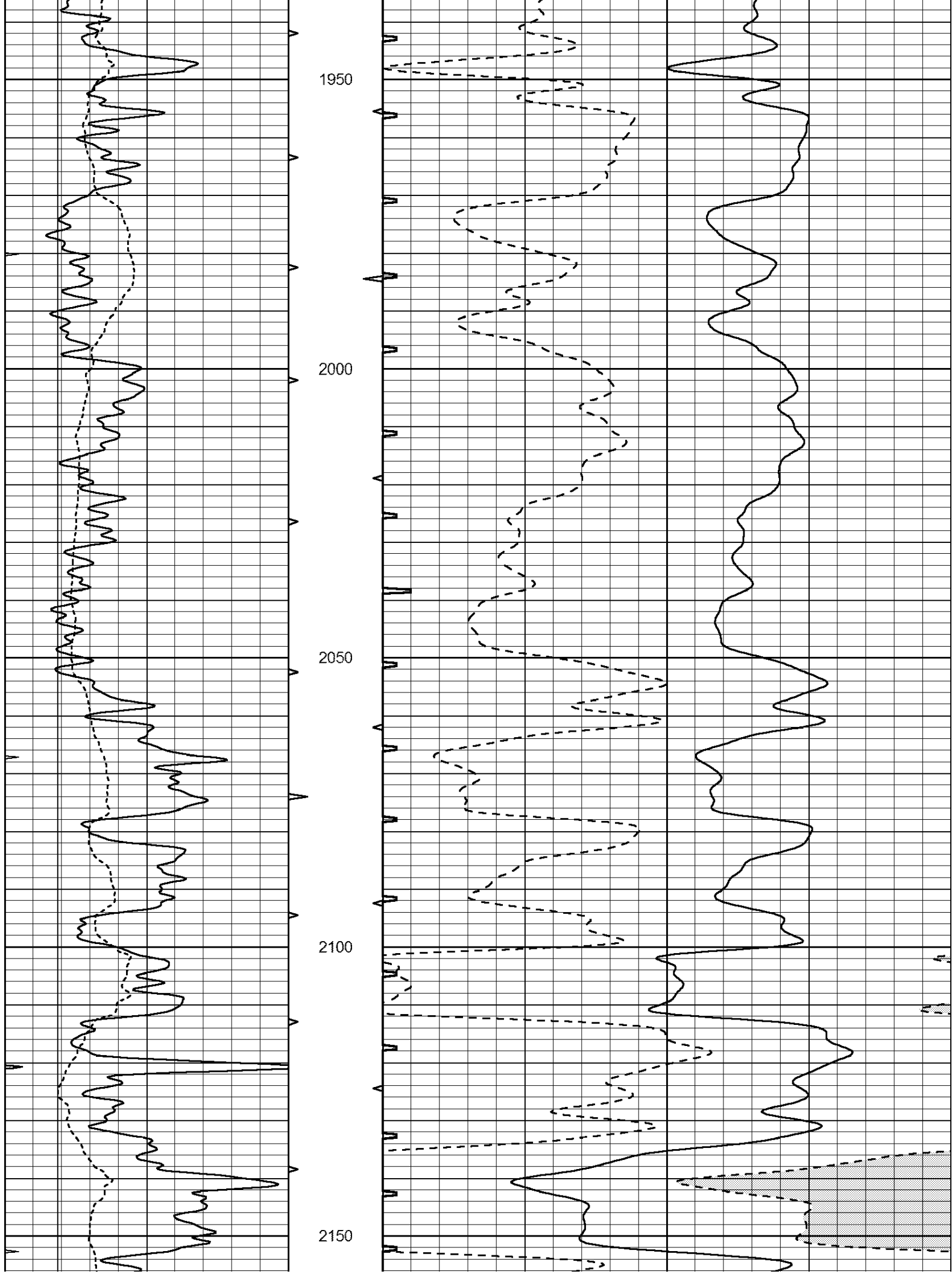
1750

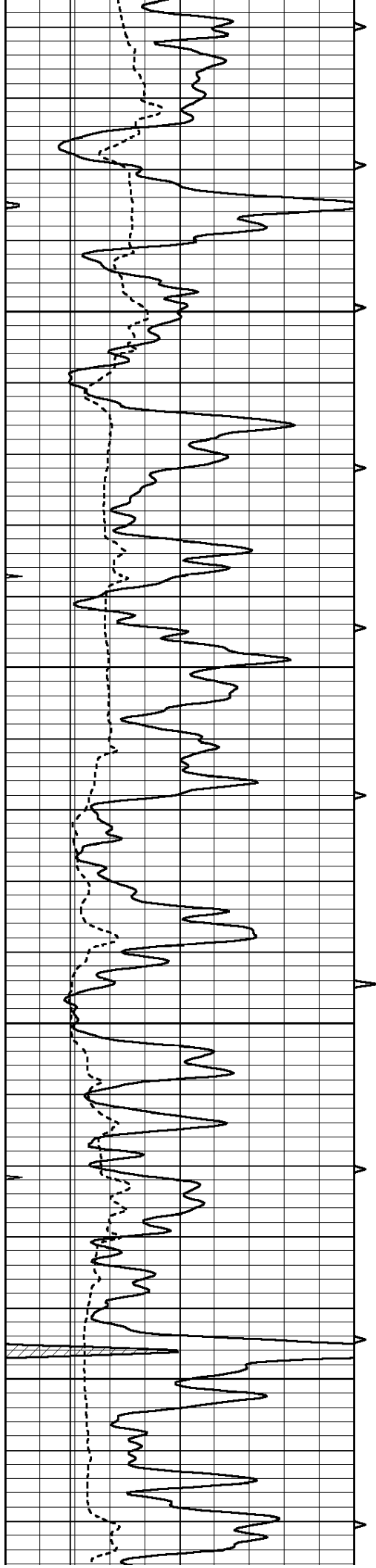
1800

1850

1900





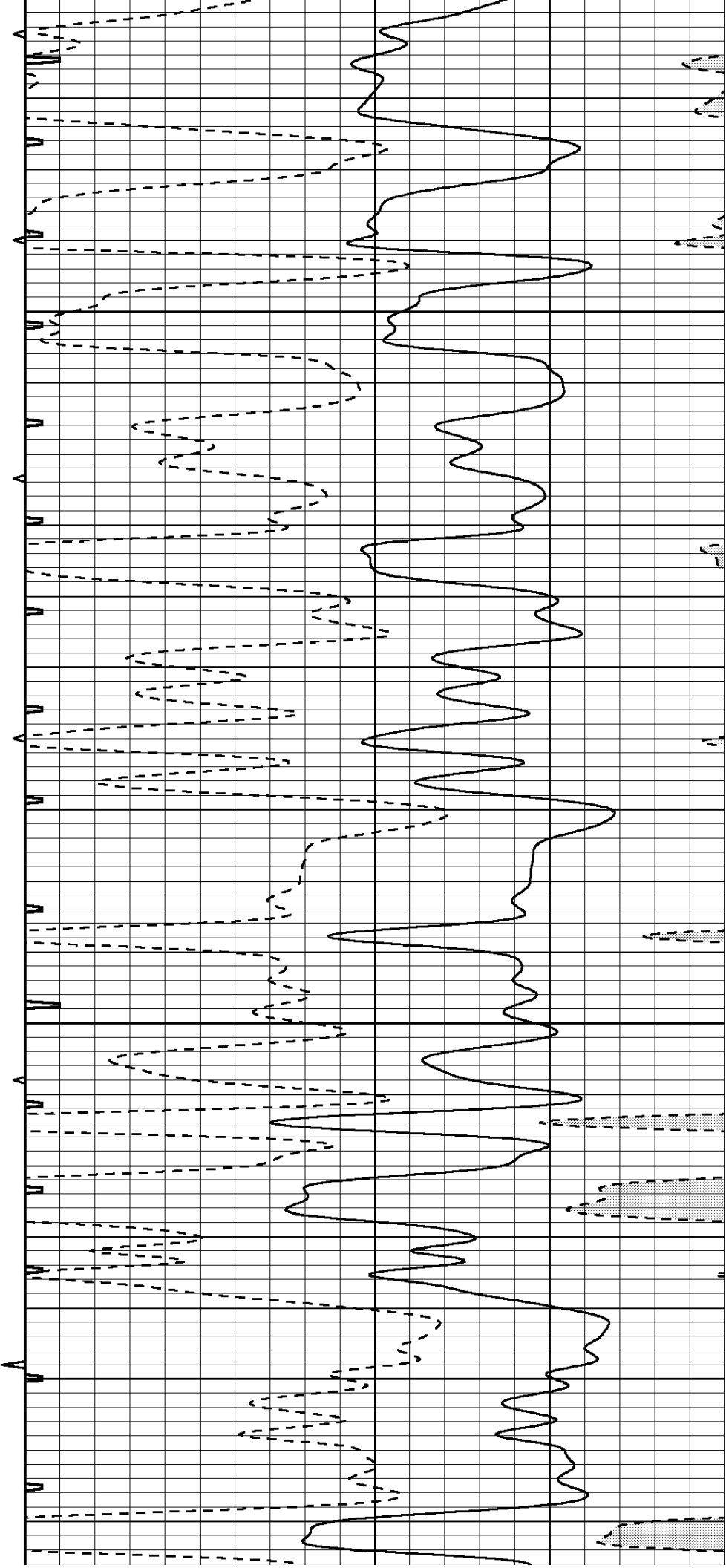


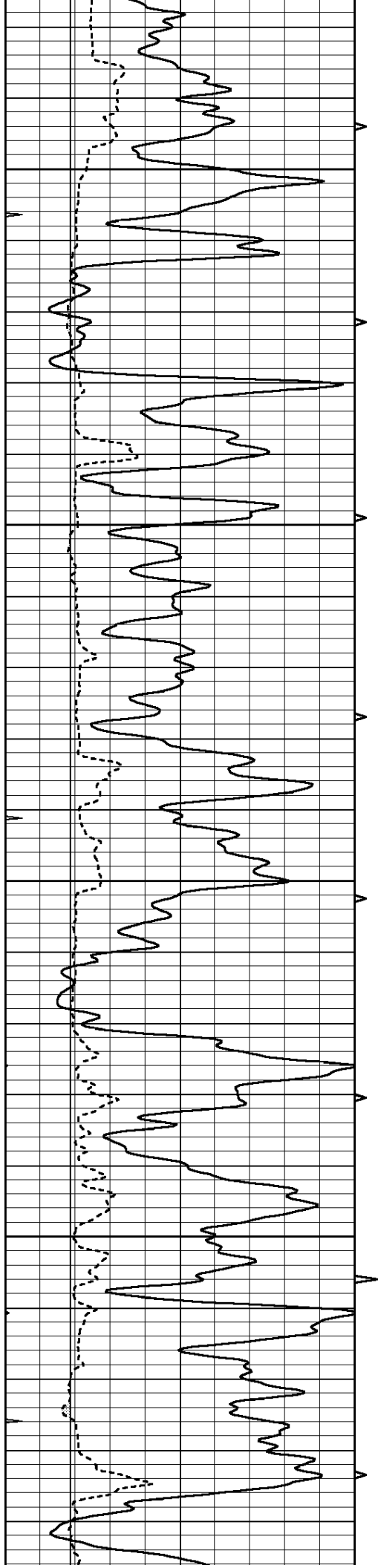
2200

2250

300

350



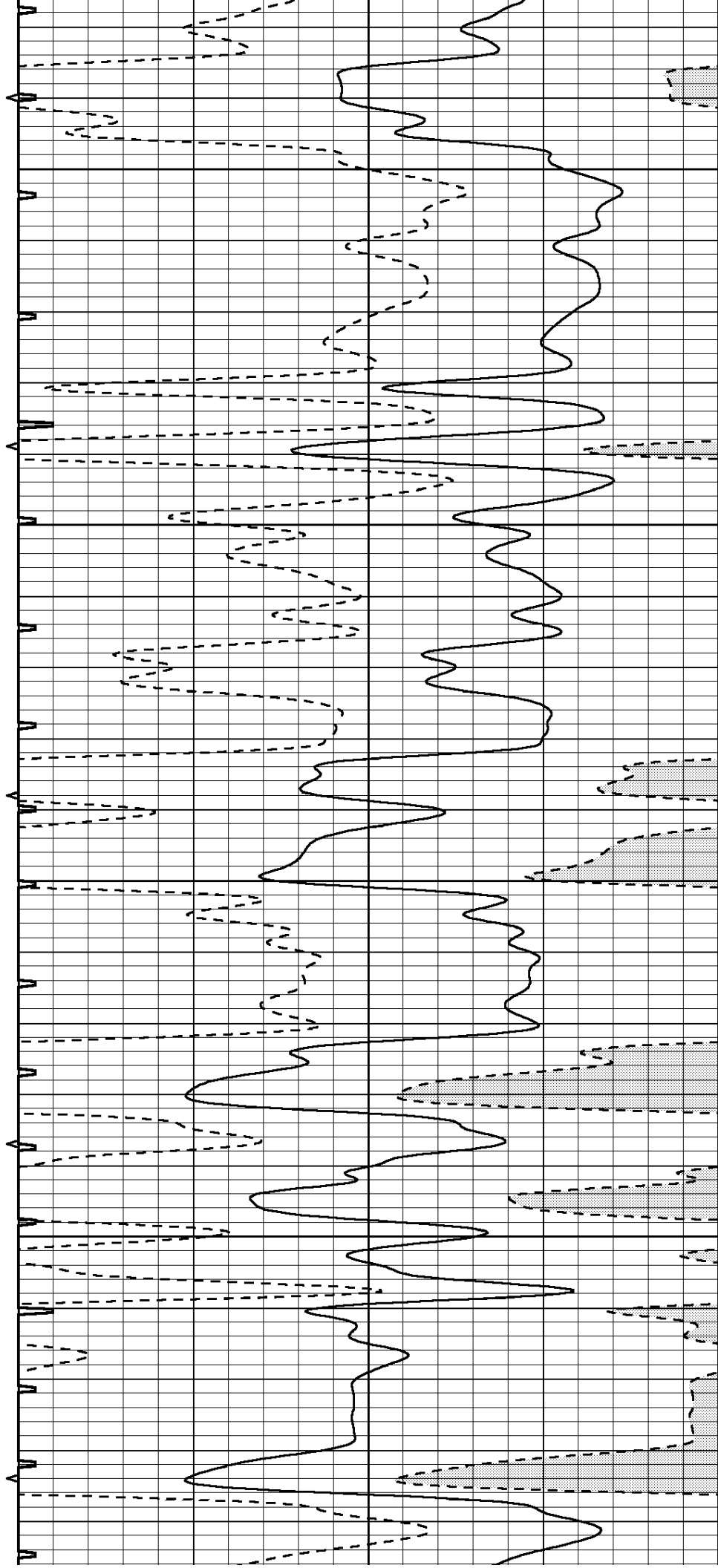


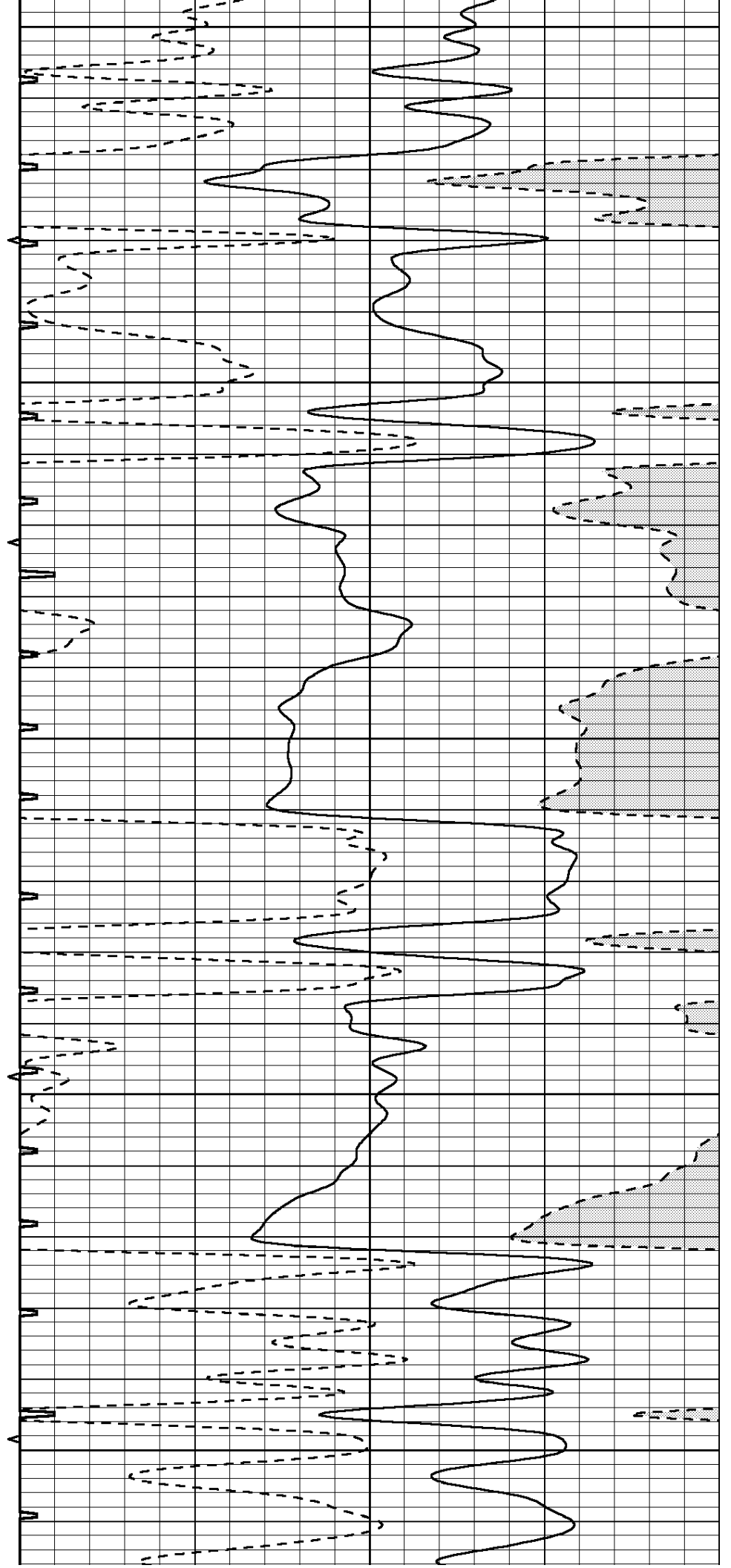
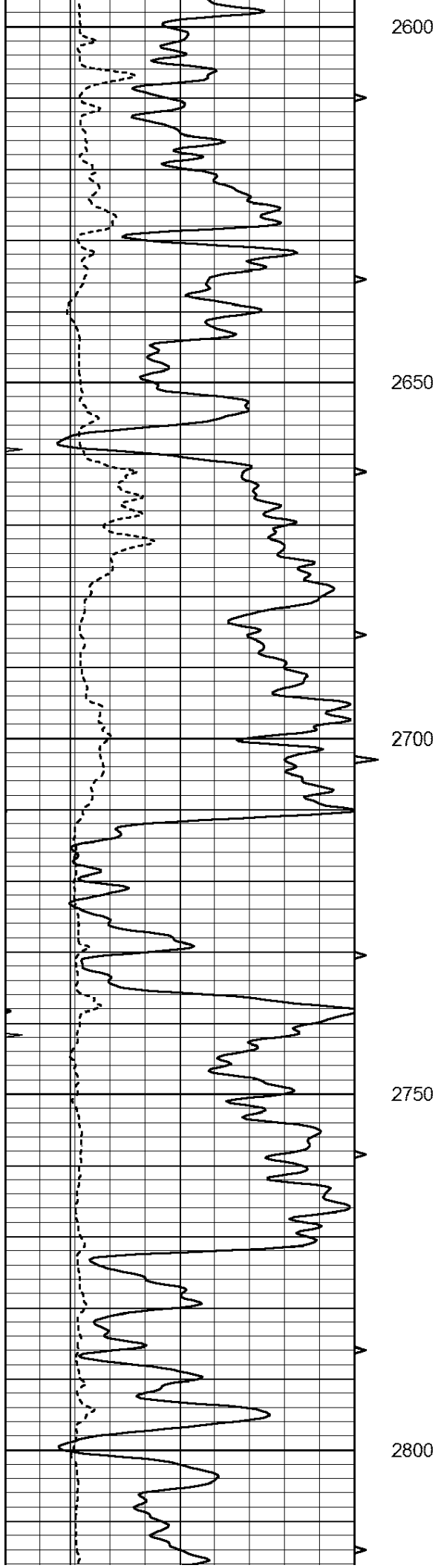
2400

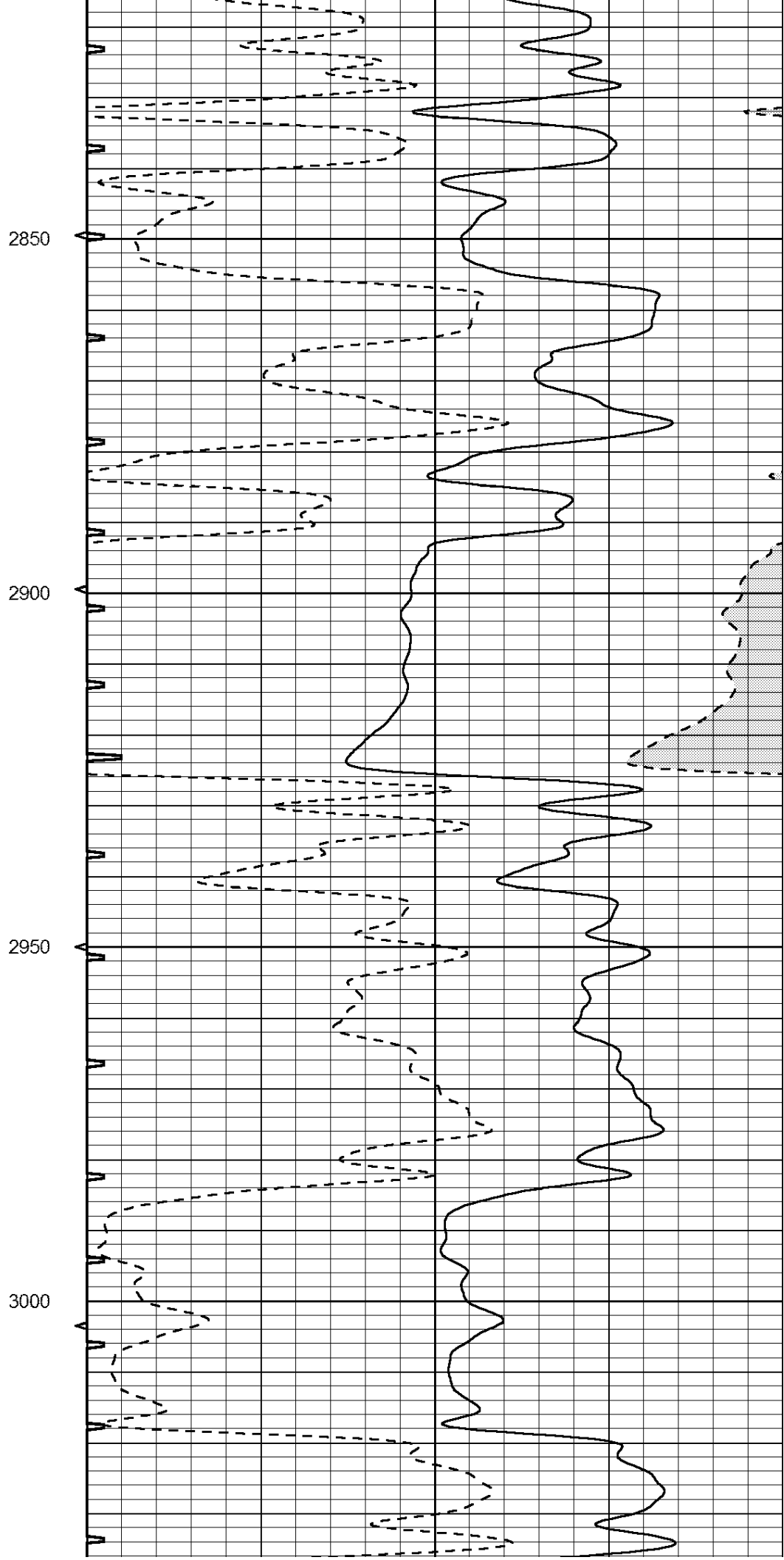
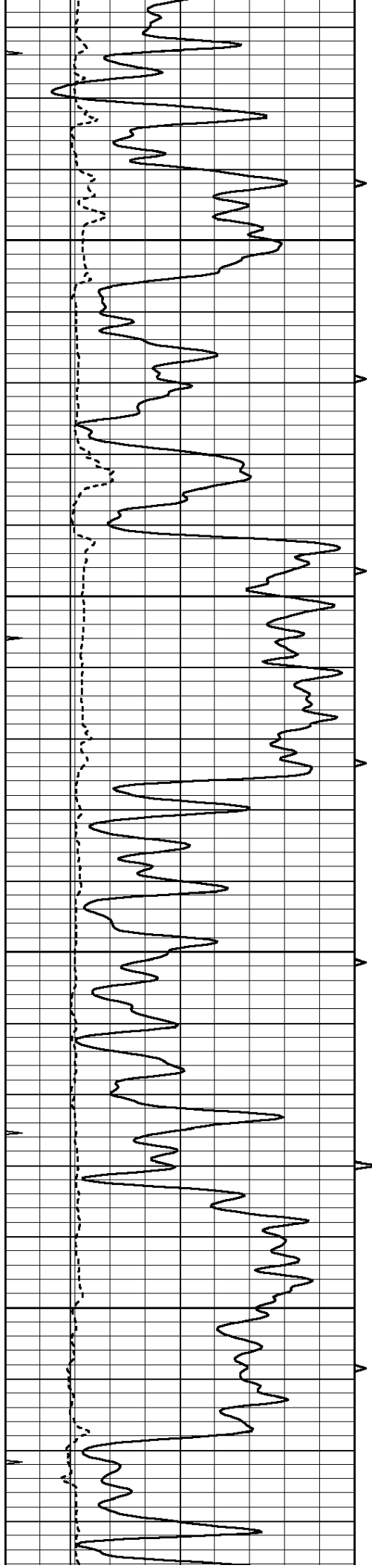
2450

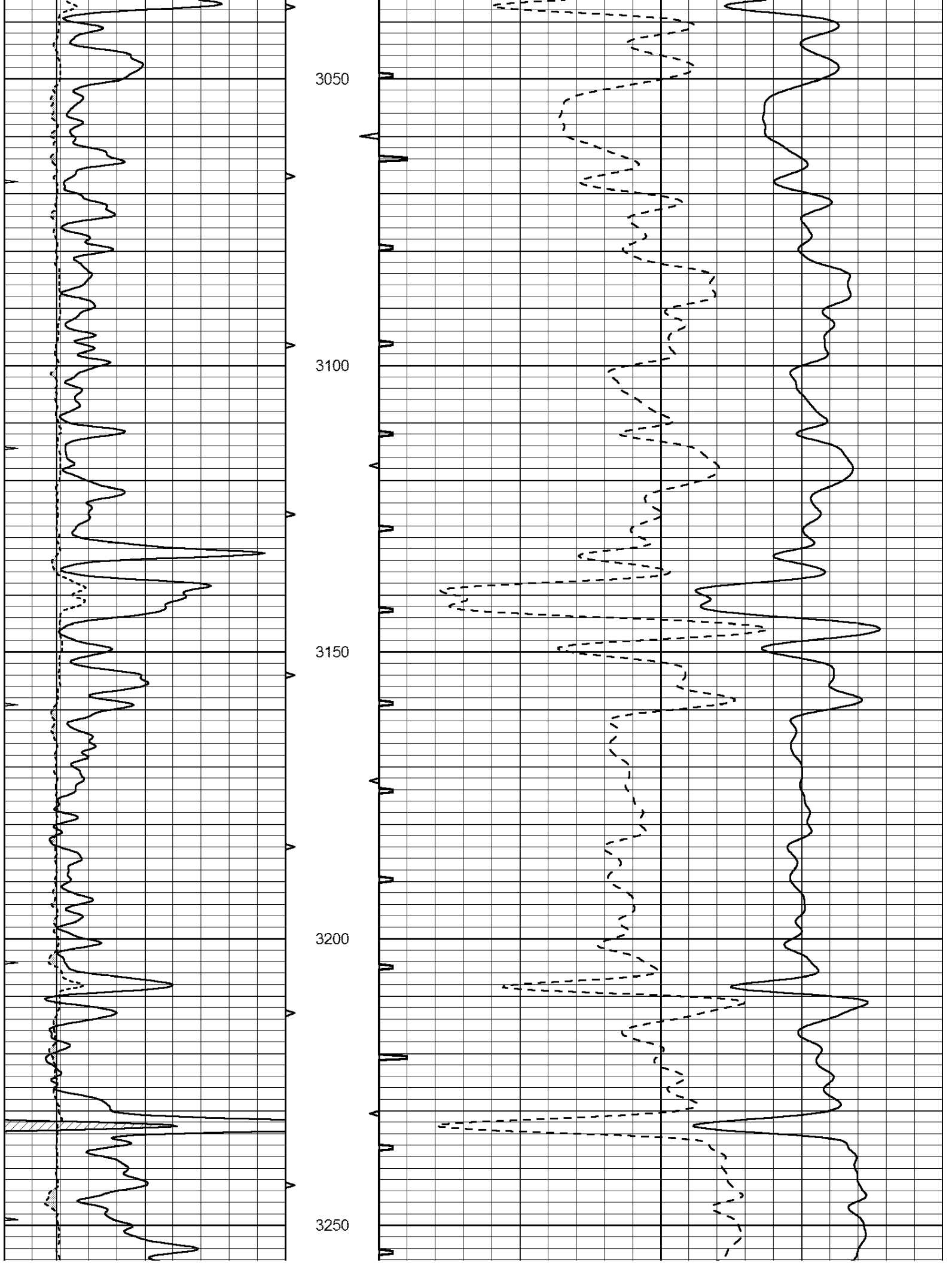
2500

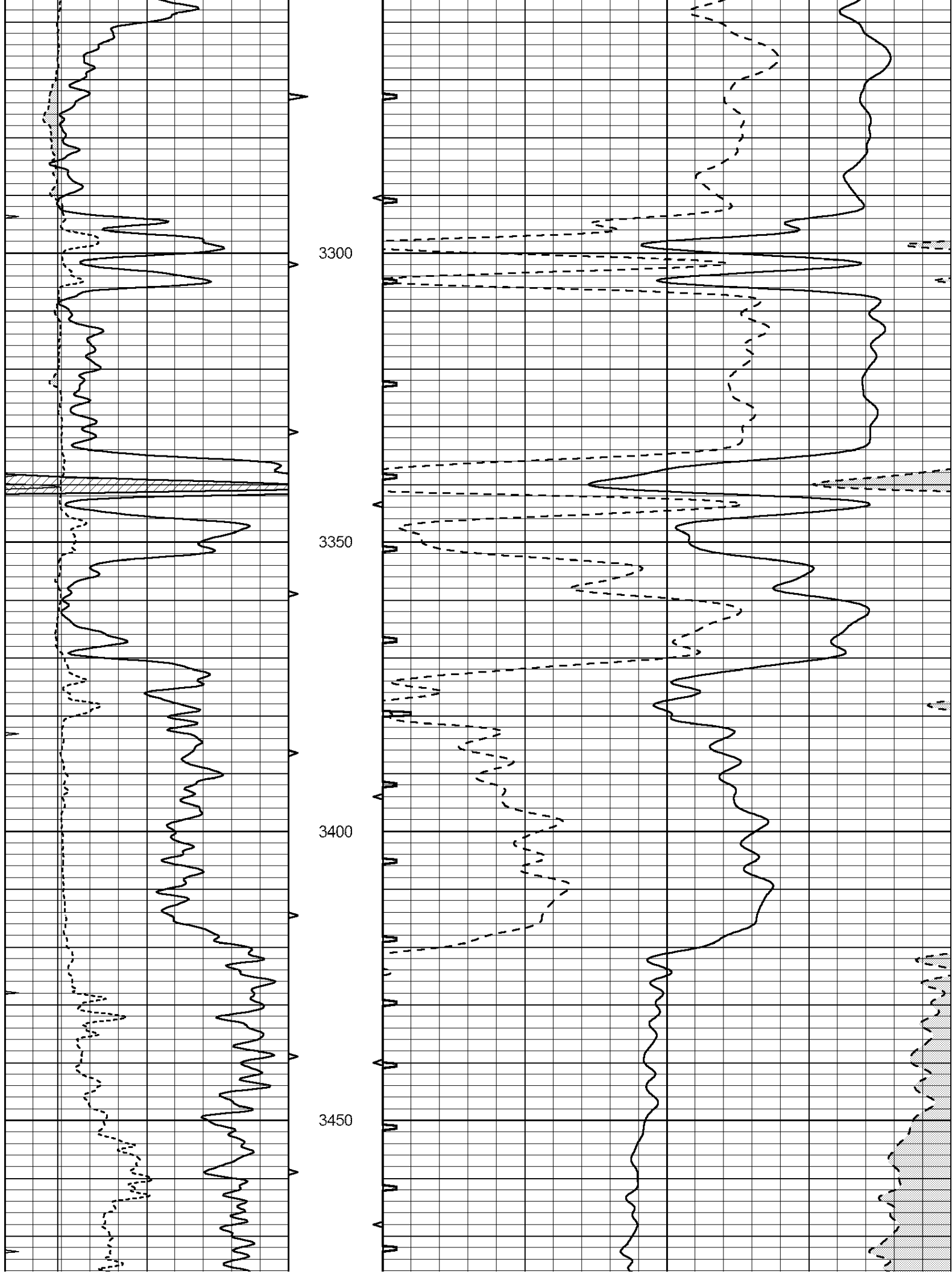
2550

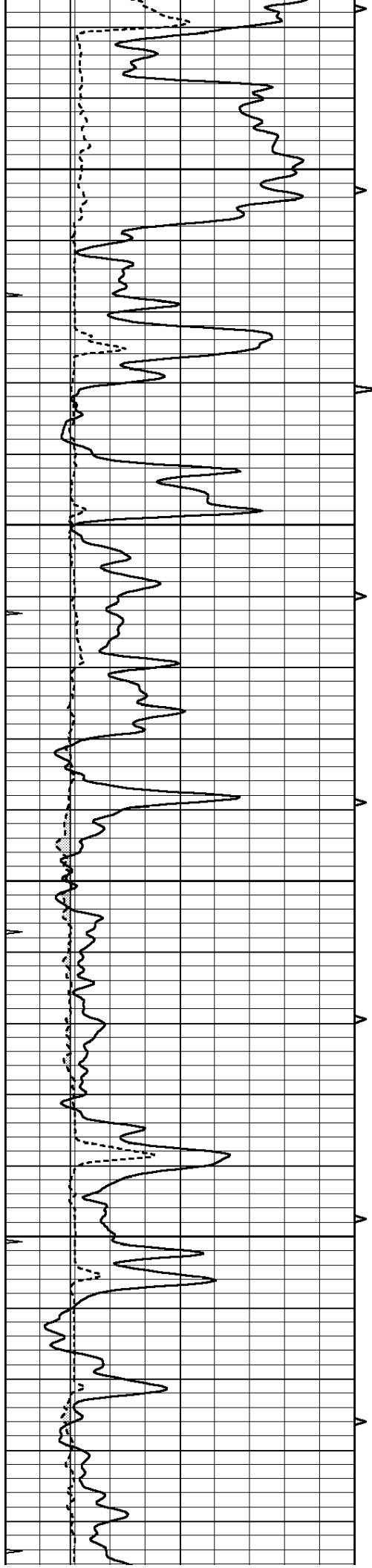










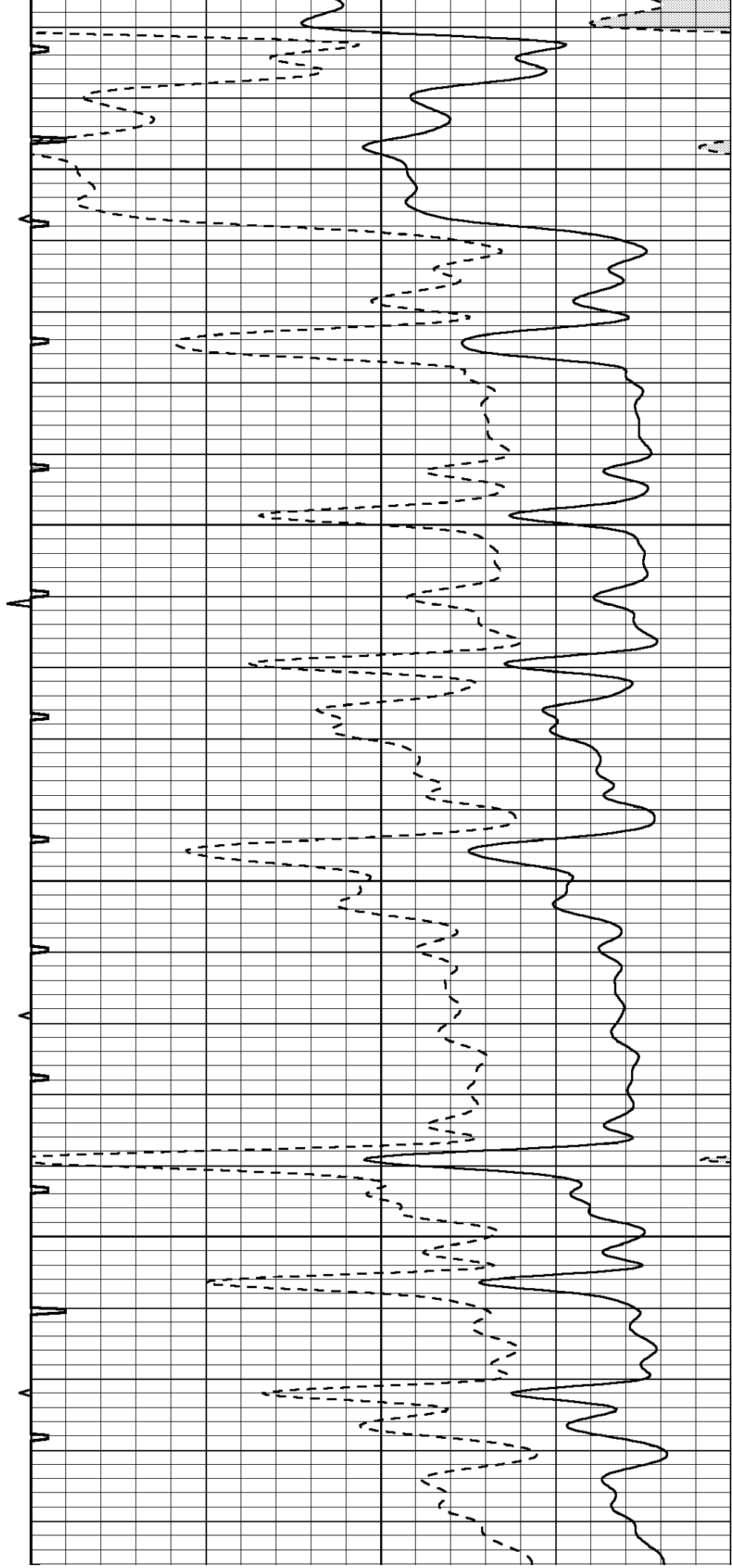


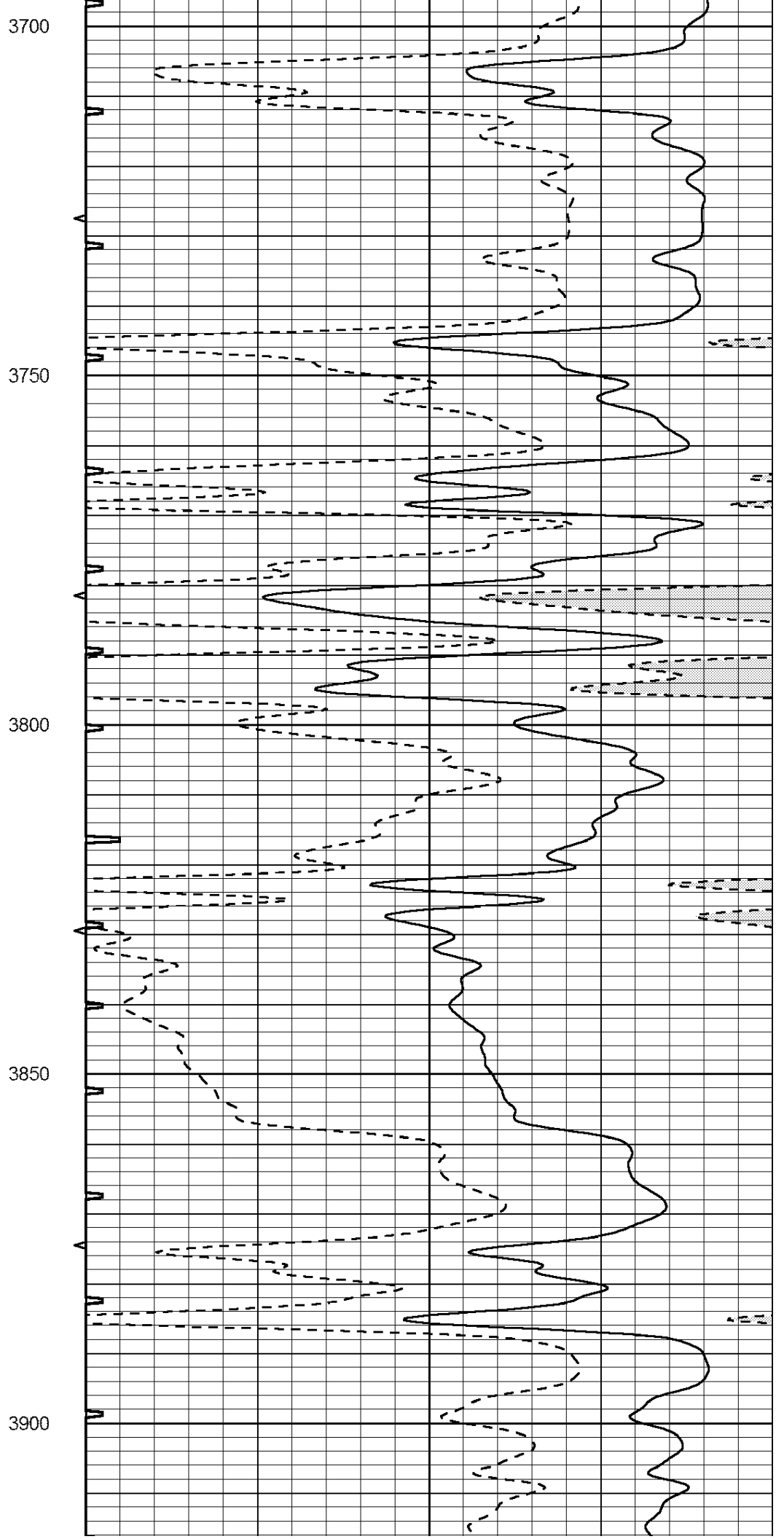
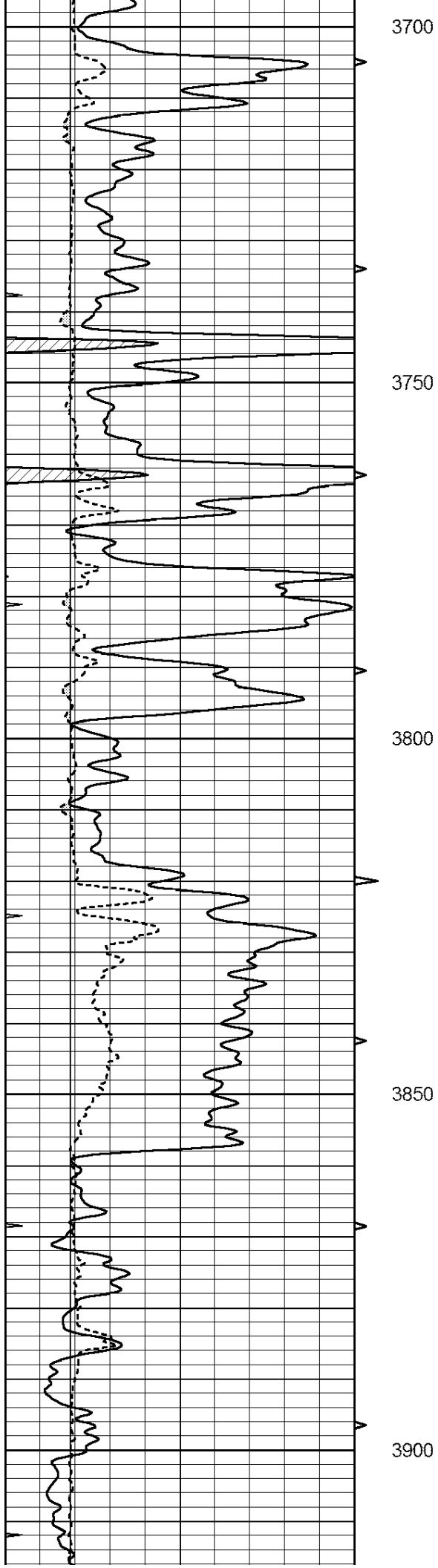
3500

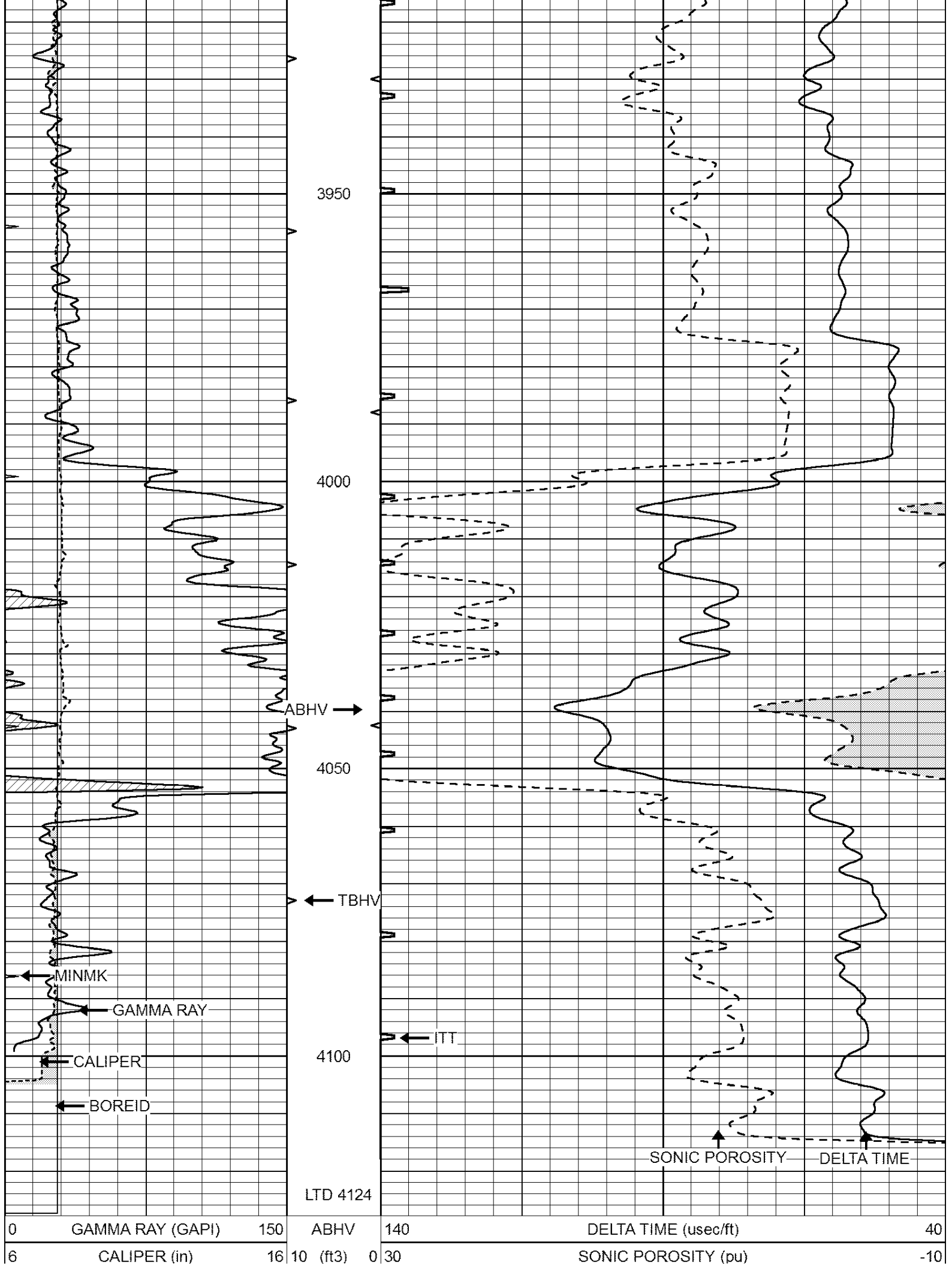
3550

3600

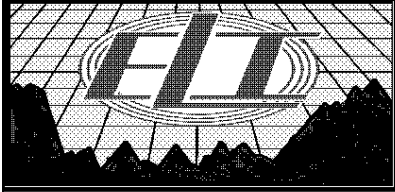
3650







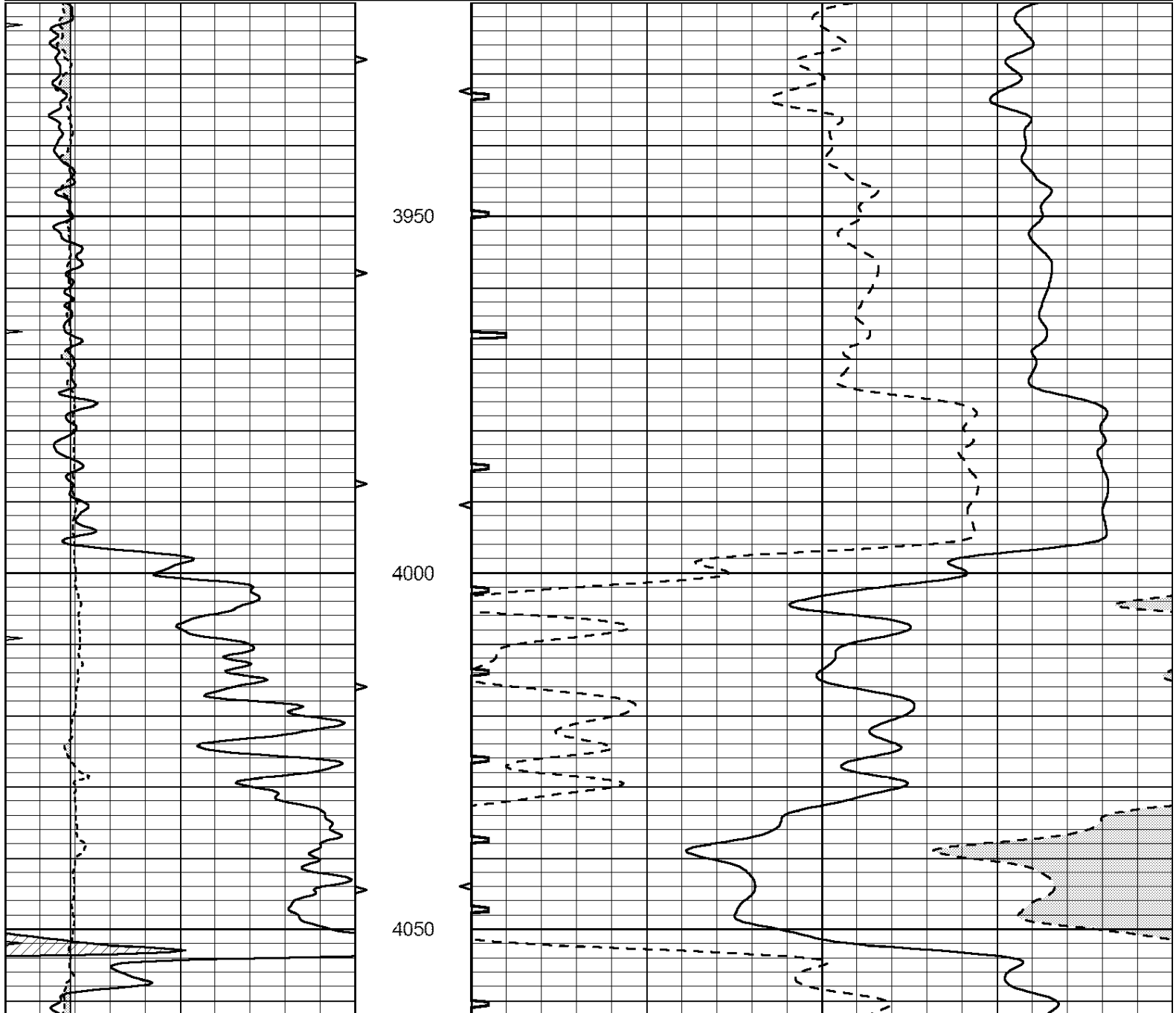
0	MINMK	20	TBHV	0	ITT (msec)	20
			0 (ft3)	10		

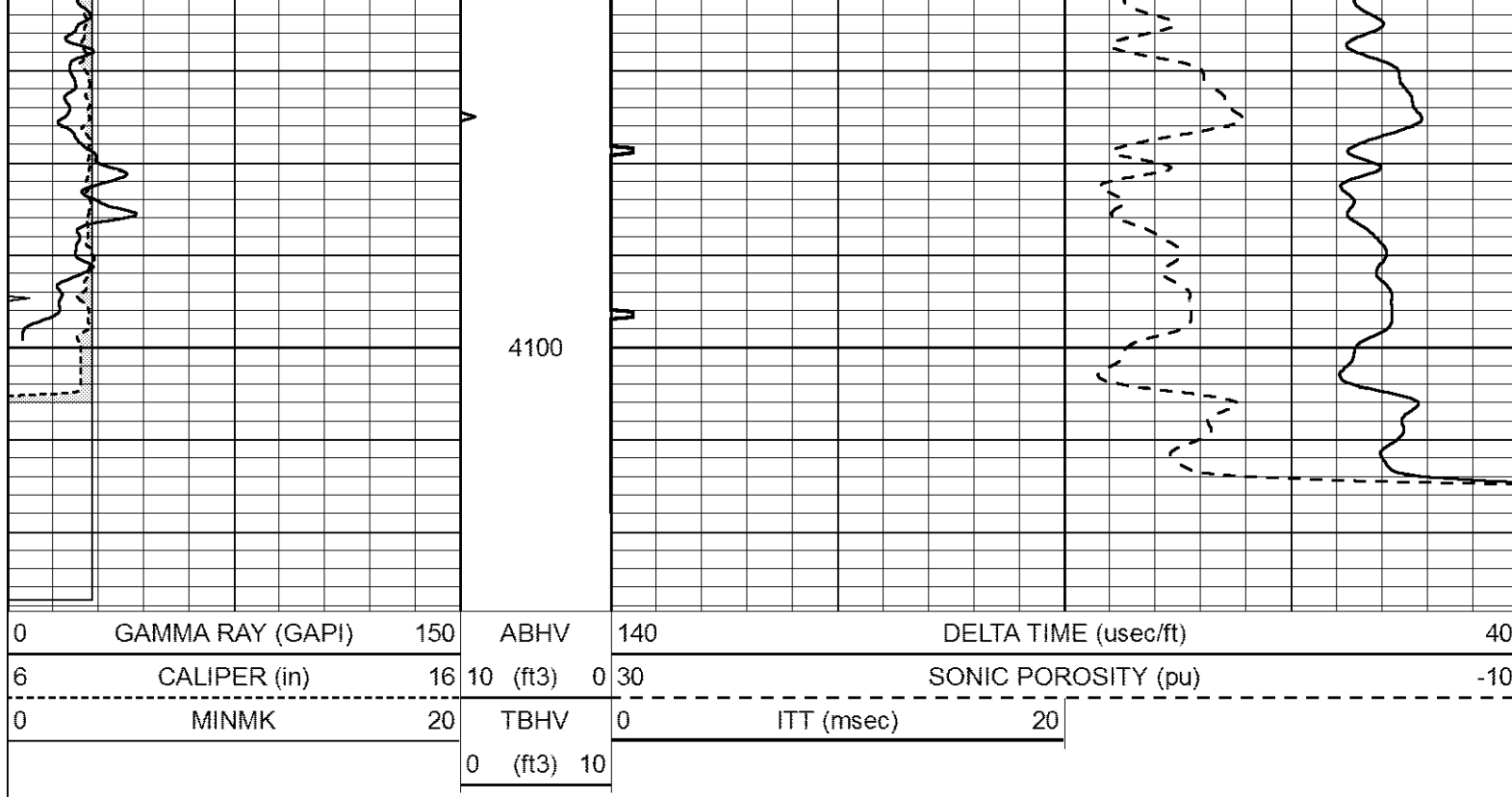


REPEAT SECTION

Database File: 2904pe.db
 Dataset Pathname: pass9.1
 Presentation Format: _slt
 Dataset Creation: Thu Aug 16 23:42:17 2018
 Charted by: Depth in Feet scaled 1:240

0	GAMMA RAY (GAPI)	150	ABHV	140	DELTA TIME (usec/ft)	40
6	CALIPER (in)	16	10 (ft3)	0	30	SONIC POROSITY (pu)
0	MINMK	20	TBHV	0	ITT (msec)	20
			0 (ft3)	10		





Calibration Report

Database File: 2904pe.db
 Dataset Pathname: pass9.1
 Dataset Creation: Thu Aug 16 23:42:17 2018

MICRO Calibration Report

Serial Number: MICRO5
 Tool Model: PROBE
 Performed: Thu Aug 16 21:42:11 2018

Caliper Calibration: Gain=6.774 Offset=5.004

References	Low Cal	High Cal
Readings	7.000	15.500
	1.521	2.776

1.5" Calibration: Gain=30.334 Offset=0.000

References	Low Cal	High Cal
Readings	0.000	20.000
	0.025	1.009

2" Calibration: Gain=40.390 Offset=0.000

References	Low Cal	High Cal
Readings	0.000	20.000
	0.012	1.807

Gamma Ray Calibration Report

Serial Number: GR5
 Tool Model: OPEN
 Performed: Mon Jul 02 20:05:37 2018

Calibrator Value: 1.0 GAPI

Background Reading:	0.0	cps
Calibrator Reading:	1.0	cps

Sensitivity:

0.8000

GAPI/cps