

HALLIBURTON

MICROLOG

COMPANY		RUSSELL OIL, INC.	
WELL		NUSS 'D' #33-1	
FIELD/BLOCK		NUSS	
COUNTY		RUSSELL	
STATE		KANSAS	
Permanent Datum		GL	Elev. 1918.0 ft
Log measured from		KB	D.F. 1921.0 ft
Drilling measured from		KB	G.L. 1918.0 ft
Date	12-Feb-19		
Run No.	1		
Depth - Driller	3455.0 ft		
Depth - Logger	3455.0 ft		
Bottom - Logged Interval	3445		
Bottom - Logged Interval	927		
Casing - Driller	8.625 in	@ 928.0 ft	@
Casing - Logger	927.0 ft		
Bit Size	7.875 in		@
Type Fluid in Hole	Water Based Mud		
Density	9.0 ppg	49.00 sl/qt	
PH	9.50 pH	8.0 cphm	
Source of Sample	MUD PIT		
Rm @ Meas. Temperature	0.51 ohmm	@ 72.00 degF	@
Rmf @ Meas. Temperature	0.44 ohmm	@ 70.00 degF	@
Rmc @ Meas. Temperature	0.63 ohmm	@ 70.00 degF	@
Source Rmf	Rmc	MEAS	
Rm @ BHT	0.36 ohmm	@ 105.0 degF	@
Time Since Circulation	11:00 hr		
Time on Bottom	12-Feb-19 14:13		
Max. Rec. Temperature	105.00 degF	@ 3455.0 ft	@
Equipment	Location	12156883	EL RENO, OK
Recorded By	WHITLOCK		
Witnessed By	KITT NOAH		

Fold here

Service Ticket No.: 905479538		API No.: 15-167-24087-00-00		PGM Version: WL INSITE R5.8.9 (Build 6)				
CHANGE IN MUD TYPE OR ADDITIONAL SAMPLE			RESISTIVITY SCALE CHANGES					
Date	Sample No.		Type Log	Depth	Scale Up Hole	Scale Down Hole		
Depth-Driller								
Type Fluid in Hole								
Density	Viscosity							
Ph	Fluid Loss							
Source of Sample			RESISTIVITY EQUIPMENT DATA					
Rm @ Meas. Temp	@	@	Run No.	Tool Type & No.	Pad Type	Tool Pos.	Other	
Rmf @ Meas. Temp.	@	@						
Rmc @ Meas. Temp.	@	@						
Source Rmf	Rmc							
Rm @ BHT	@	@						
Rmf @ BHT	@	@						
Rmc @ BHT	@	@						
EQUIPMENT DATA								
GAMMA		ACOUSTIC		DENSITY		NEUTRON		
Run No.		Run No.		Run No.		Run No.		
Serial No.		Serial No.		Serial No.		Serial No.		
Model No.		Model No.		Model No.		Model No.		
Diameter		No. of Cent.		Diameter		Diameter		
Detector Model No.		Spacing		Log Type		Log Type		
Type				Source Type		Source Type		
Length		LSA [Y/N]		Serial No.		Serial No.		
Distance to Source		FWDA [Y/N]		Strength		Strength		
LOGGING DATA								
GENERAL		GAMMA		ACOUSTIC		DENSITY	NEUTRON	
Run	Depth	Speed	Scale	Scale	Matrix	Scale	Matrix	
No.	From	To	L	R	L	R	L	R

DIRECTIONAL INFORMATION

Maximum Deviation @ KOP @

Remarks: 5 1/2" CASING USED FOR ANNULAR HOLE VOLUME
LIMESTONE MATRIX USED FOR DENSITY/NEUTRON POROSITY CALCULATIONS

HALLIBURTON DOES NOT GUARANTEE THE ACCURACY OF ANY INTERPRETATION OF THE LOG DATA, CONVERSION OF LOG DATA TO PHYSICAL ROCK PARAMETERS OR RECOMMENDATIONS WHICH MAY BE GIVEN BY HALLIBURTON PERSONNEL OR WHICH APPEAR ON THE LOG OR IN ANY OTHER FORM. ANY USER OF SUCH DATA, INTERPRETATIONS, CONVERSIONS, OR RECOMMENDATIONS AGREES THAT HALLIBURTON IS NOT RESPONSIBLE EXCEPT WHERE DUE TO GROSS NEGLIGENCE OR WILLFUL MISCONDUCT, FOR ANY LOSS, DAMAGES, OR EXPENSES RESULTING FROM THE USE THEREOF.

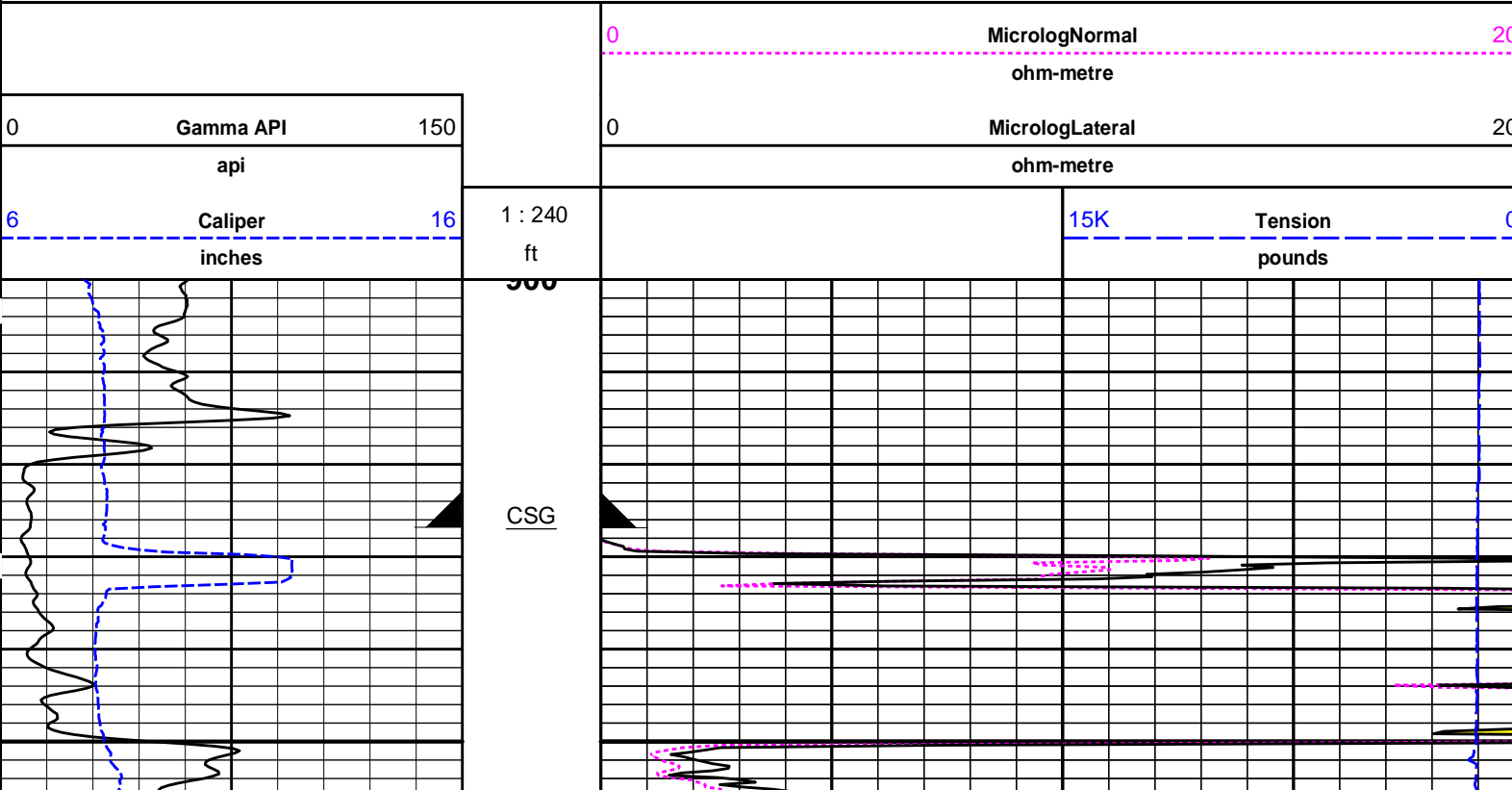
HALLIBURTON

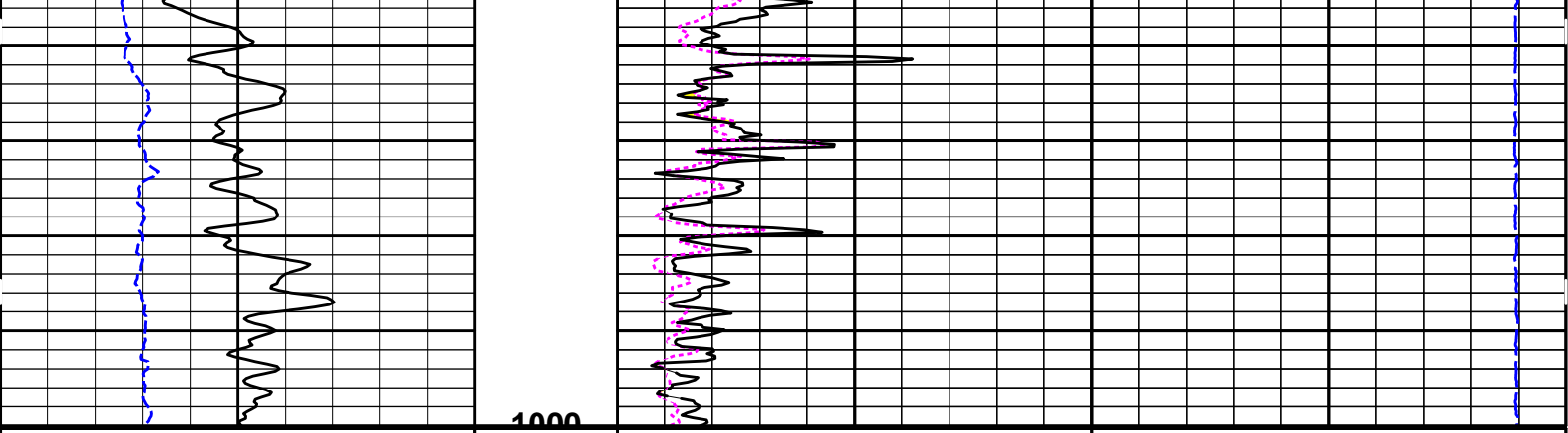
HALLIBURTON

Plot Time: 12-Feb-19 16:19:54
 Plot Range: 900 ft to 1000 ft
 Data: RUSSELL_NUSS\Well Based\DAQ-0001-002\
 Plot File: \\-LOCAL-RUSSELL_NUSS\0001 RWCH-SP-GTET-DSNT-SDLT-ACRT\MLOG\Microlog_IQ_5_main

5 INCH MAIN LOG

MAIN LOG 5" PER 100'





6	Caliper inches	16	1 : 240 ft	15K	Tension pounds	0
0	Gamma API api	150		0	MicrologLateral ohm-metre	20
				0	MicrologNormal ohm-metre	20

HALLIBURTON

Plot Time: 12-Feb-19 16:19:55
 Plot Range: 900 ft to 1000 ft
 Data: RUSSELL_NUSS\Well Based\DAQ-0001-002\
 Plot File: \\-LOCAL-RUSSELL_NUSS\0001 RWCH-SP-GTET-DSNT-SDLT-ACRT\MLOG\Microlog_IQ_5_main

5 INCH MAIN LOG

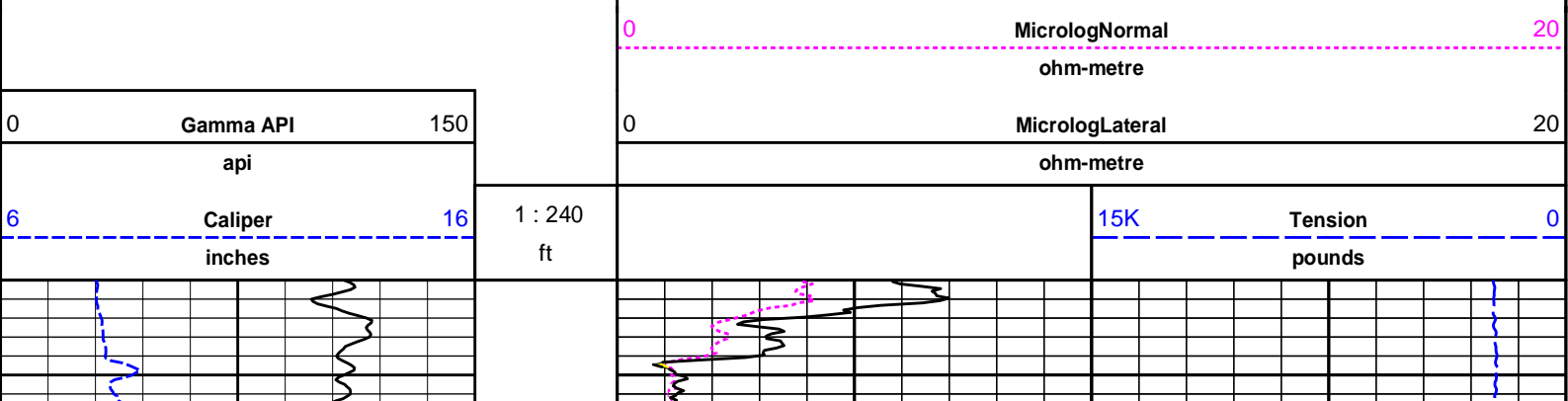
MAIN LOG 5" PER 100'

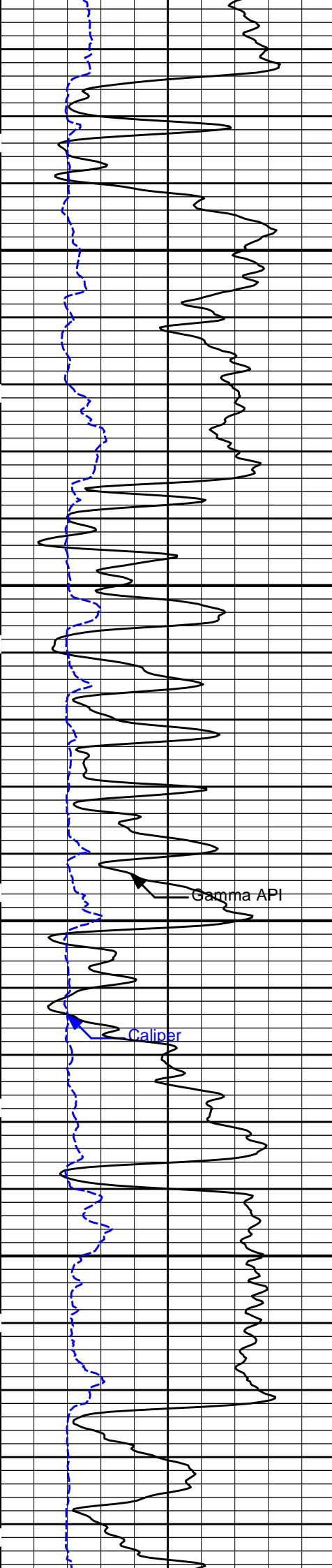
HALLIBURTON

Plot Time: 12-Feb-19 16:19:55
 Plot Range: 2550 ft to 3456.42 ft
 Data: RUSSELL_NUSS\Well Based\DAQ-0001-002\
 Plot File: \\-LOCAL-RUSSELL_NUSS\0001 RWCH-SP-GTET-DSNT-SDLT-ACRT\MLOG\Microlog_IQ_5_main

5 INCH MAIN LOG

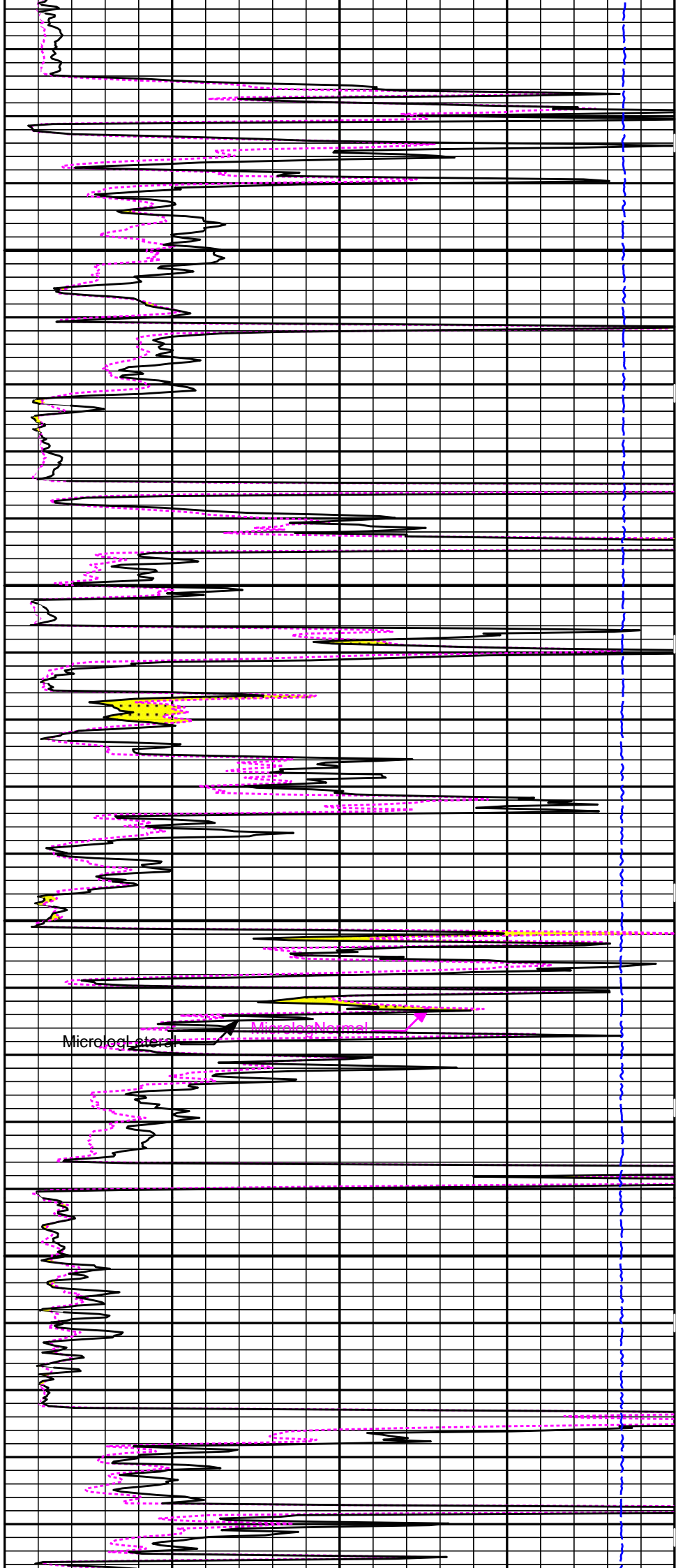
MAIN LOG 5" PER 100'





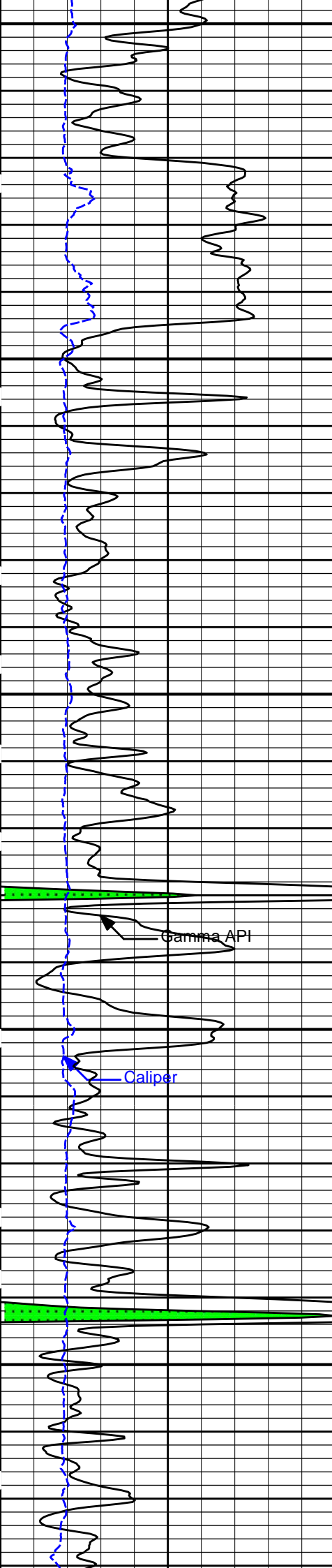
2600

2700



Microlog Lateral

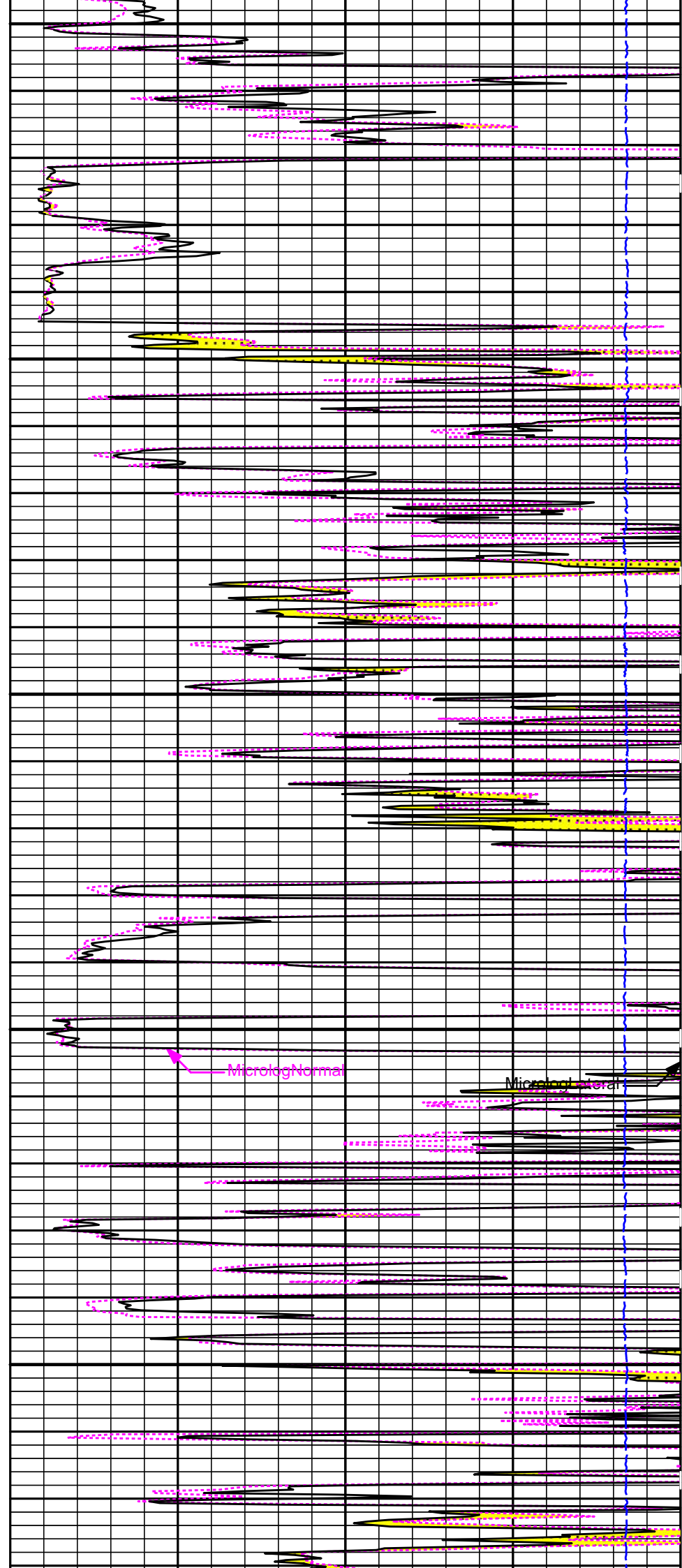
Microlog Normal



2800

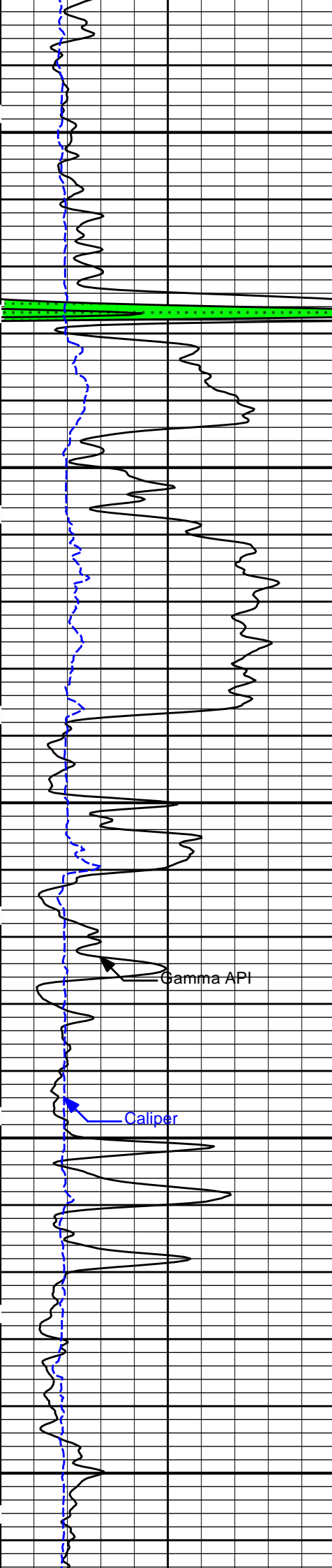
2900

3000



MicrologNormal

MicrologLateral

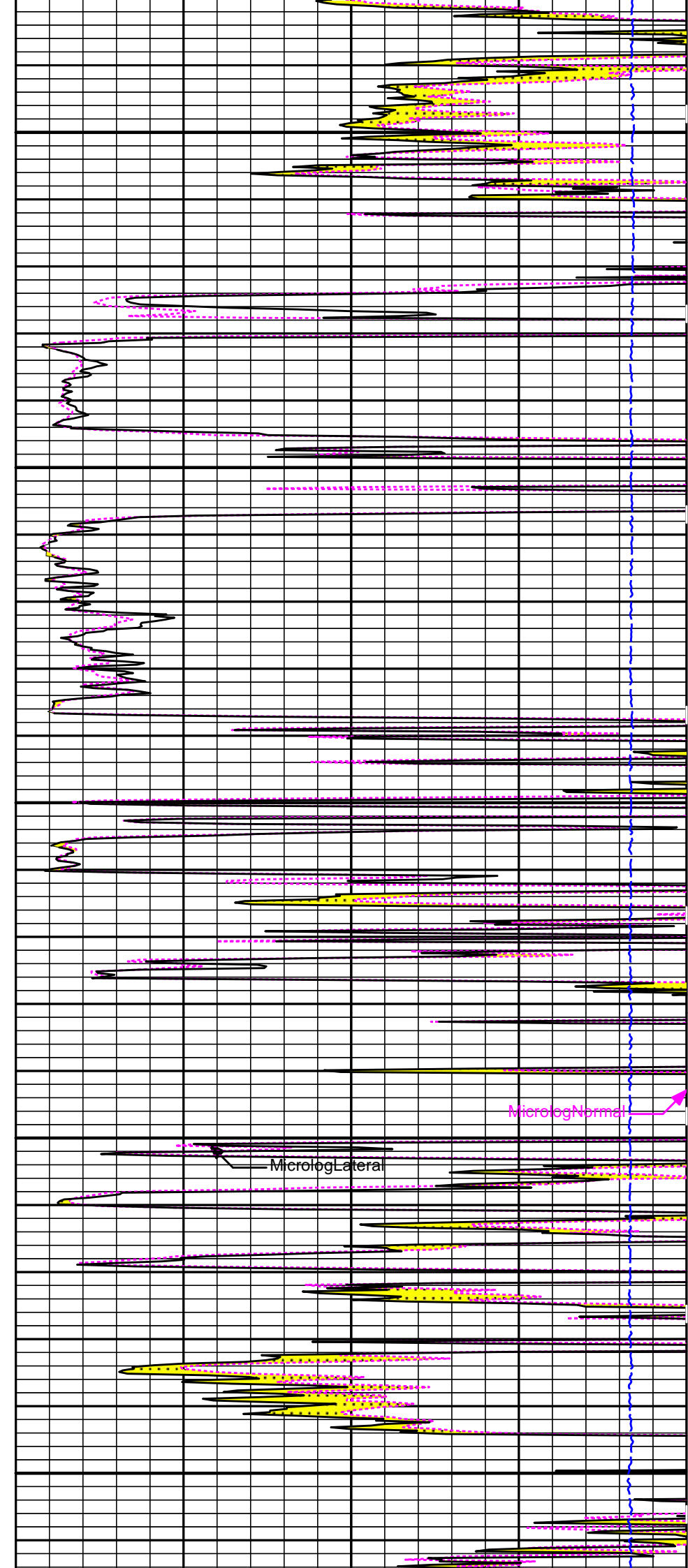


3100

3200

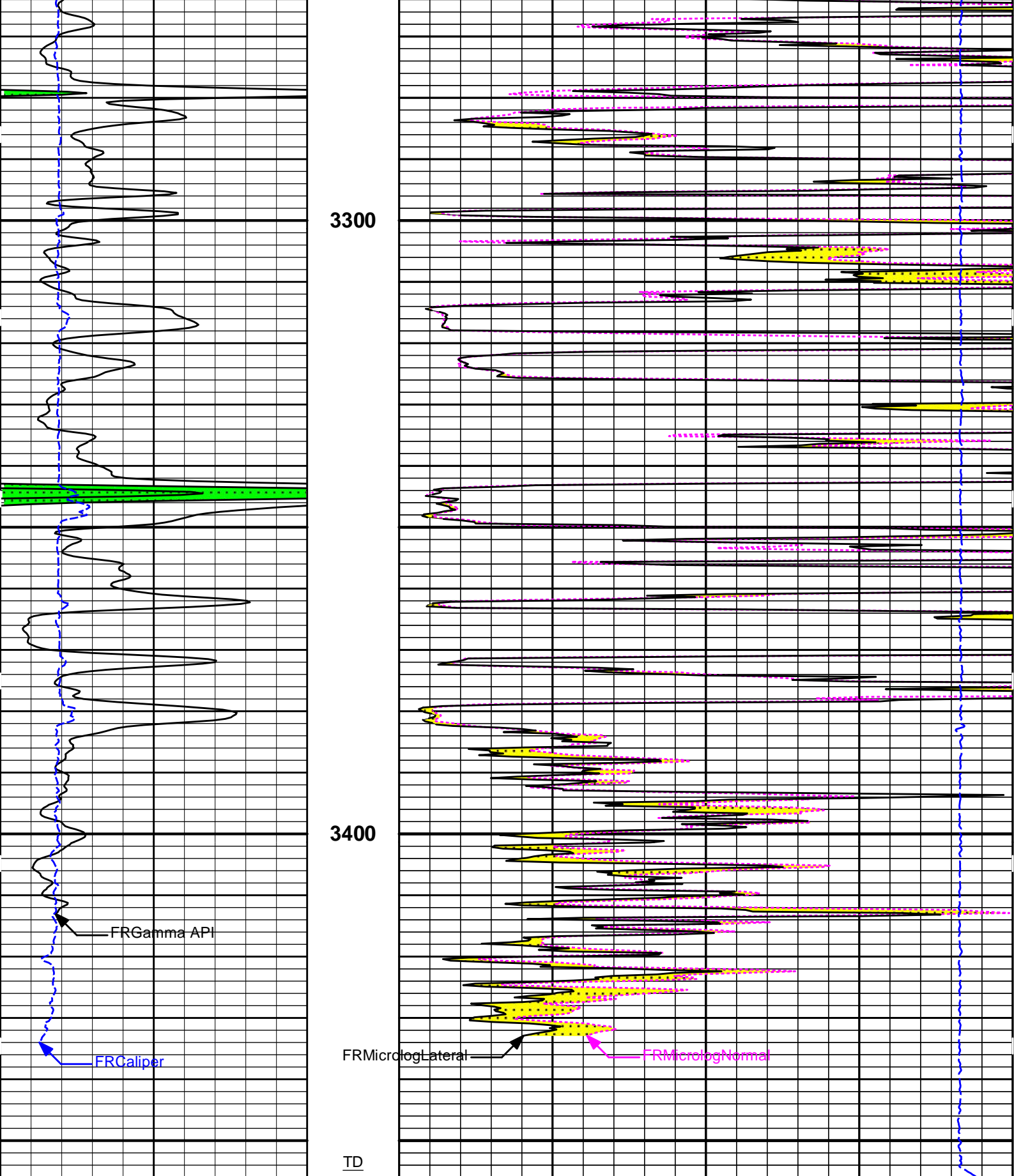
Gamma API

Caliper



MicrologLateral

MicrologNormal



6	Caliper inches	16	1 : 240 ft	15K	Tension pounds	0
0	Gamma API api	150		0	MicrologLateral ohm-metre	20
				0	MicrologNormal ohm-metre	20

5 INCH MAIN LOG

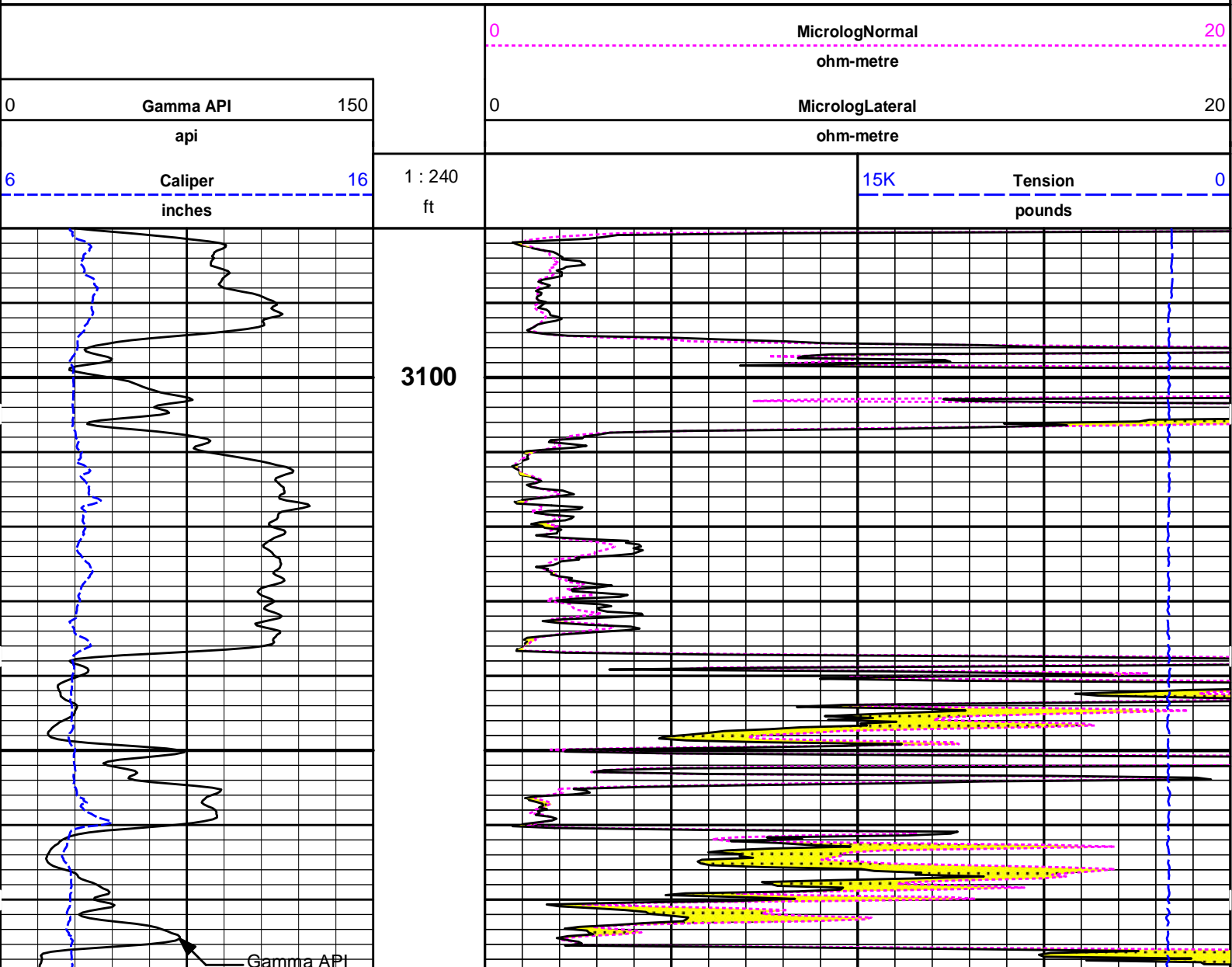
MAIN LOG 5" PER 100'

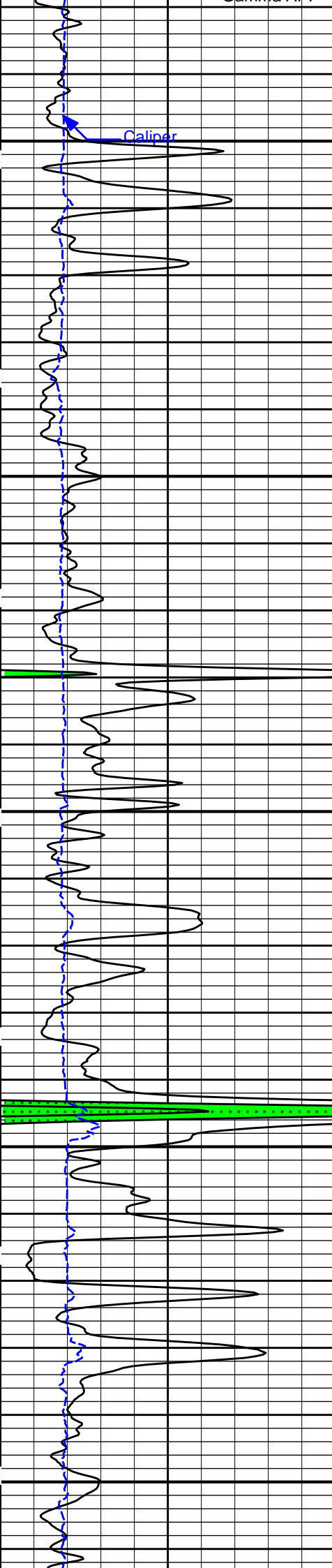
HALLIBURTON

Plot Time: 12-Feb-19 16:19:57
Plot Range: 3080 ft to 3458.67 ft
Data: RUSSELL_NUSS\Well Based\REPEAT\
Plot File: \\-LOCAL-RUSSELL_NUSS\0001 RWCH-SP-GTET-DSNT-SDLT-ACRT\MLOG\Microlog_IQ_5_main

REPEAT SECTION

REPEAT SECTION

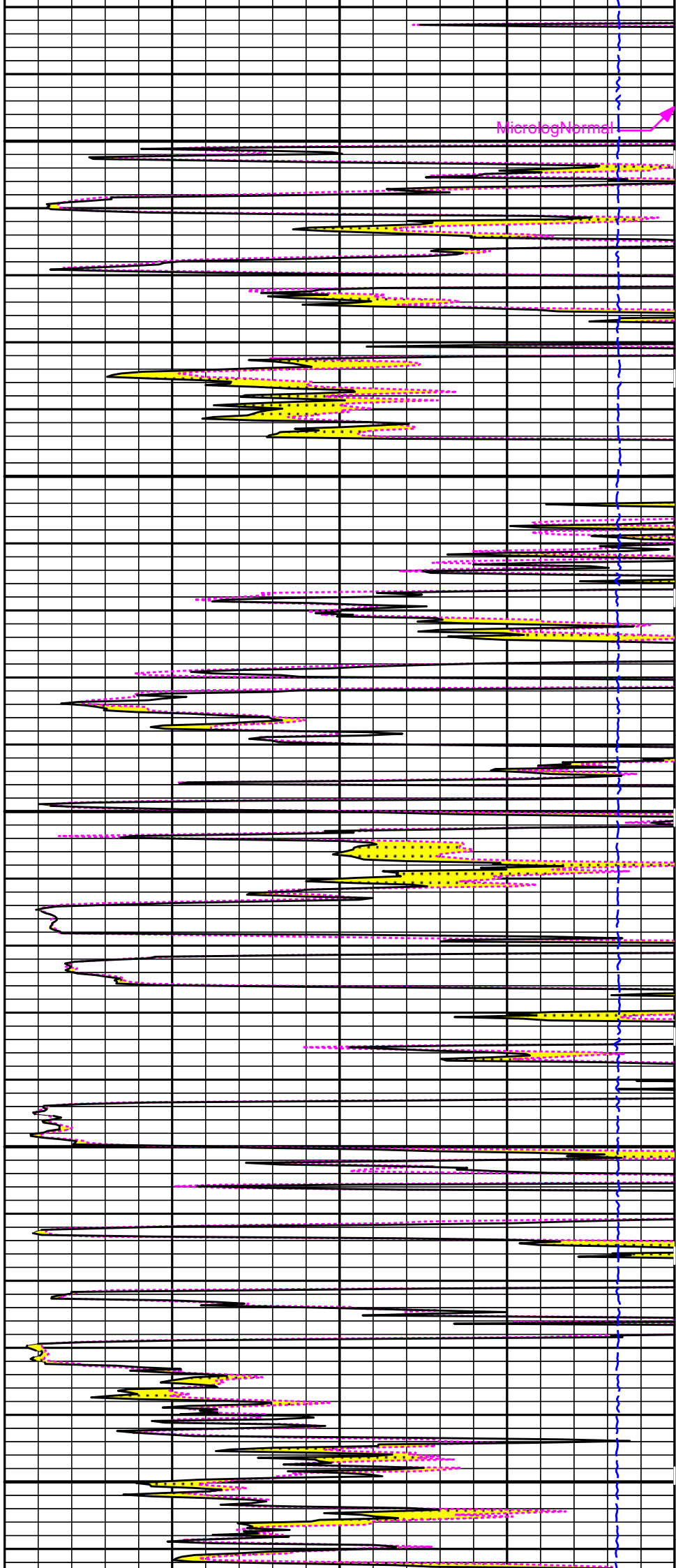




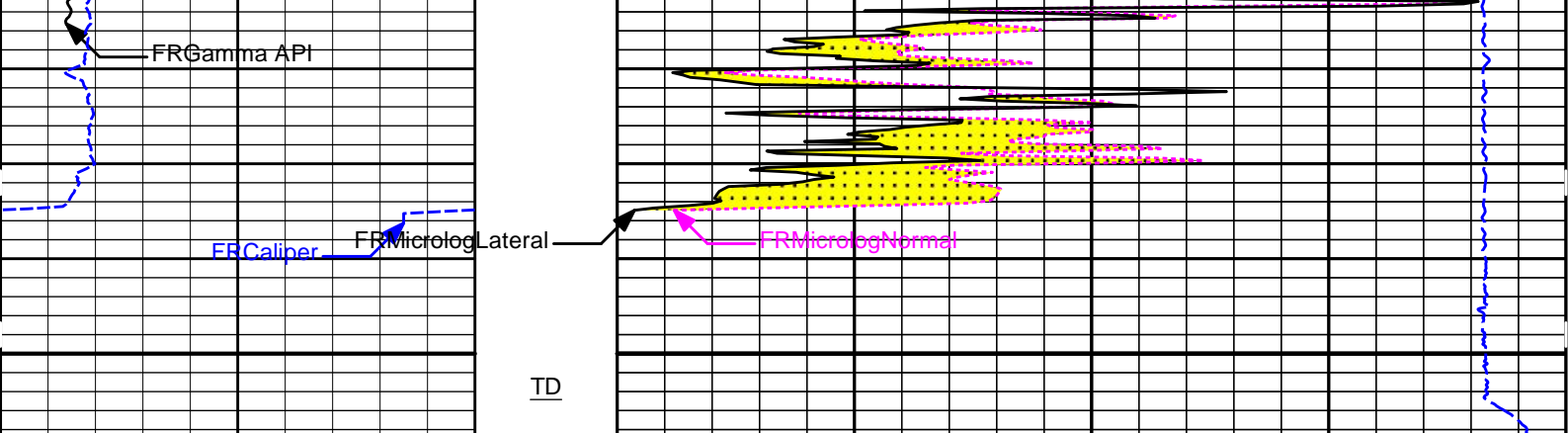
3200

3300

3400



MicrologNormal



6	Caliper inches	16	1 : 240 ft	15K	Tension pounds	0
0	Gamma API api	150		0	MicrologLateral ohm-metre	20
				0	MicrologNormal ohm-metre	20

HALLIBURTON

Plot Time: 12-Feb-19 16:19:58
 Plot Range: 3080 ft to 3458.67 ft
 Data: RUSSELL_NUSS\Well Based\REPEAT\
 Plot File: \\-LOCAL-RUSSELL_NUSS\0001 RWCH-SP-GTET-DSNT-SDLT-ACRT\MLOG\Microlog_IQ_5_main

REPEAT SECTION

REPEAT SECTION

HALLIBURTON

CALIBRATION REPORT

SURFACE TENSION SHOP CALIBRATION

Tool Name: Depth Panel - 12345678	Reference Calibration Date: 08-Feb-19 14:23:35
Engineer: SEAN WOLTEMATH	Calibration Date: 09-Feb-19 14:35:03
Software Version: WL INSITE R5.8.9 (Build 6)	Calibration Version: 1

SURFACE TENSION LOAD CELL				
Measurement	Load Cell Value	Measurement	Calibrated	Units
Low	10112.01	-99.95	0.00	lbs
High	17473.17	7809.11	7830.00	lbs

DOWNHOLE TENSION SHOP CALIBRATION

Tool Name: RWCH - 12345678	Reference Calibration Date: 10-Feb-19 03:20:04
Engineer: WHITLOCK	Calibration Date: 11-Feb-19 23:12:20
Software Version: WL INSITE R5.8.9 (Build 6)	Calibration Version: 1

DOWNHOLE LOAD CELL				
Measurement	Tool Value	Measurement	Calibrated	Units
Low	-427.27	-5.78	0.00	lbs
High	4412.40	456.88	1480.00	lbs

NATURAL GAMMA RAY TOOL SHOP CALIBRATION

NATURAL GAMMA RAY TOOL SHOP CALIBRATION

Tool Name: GTET - 11013113

Reference Calibration Date: 27-Nov-18 10:49:38

Engineer: WHITLOCK

Calibration Date: 14-Dec-18 10:17:09

Software Version: WL INSITE R5.8.9 (Build 6)

Calibration Version: 1

Calibrator Source S/N: TB-79

Calibrator API Reference:222.00 api

Equivalent Calibrator API Reference:225.9 api

Measurement	Measured	Calibrated	Units
Background	19.9	19.6	api
Background + Calibrator	249.5	245.5	api
Calibrator	229.5	225.9	api

NATURAL GAMMA RAY TOOL FIELD CALIBRATION

Tool Name: GTET - 11013113

Reference Calibration Date: 14-Dec-18 10:17:09

Engineer: WHITLOCK

Calibration Date: 11-Feb-19 11:09:14

Software Version: WL INSITE R5.8.9 (Build 6)

Calibration Version: 1

Calibrator Source S/N: TB-79

Calibrator API Reference:222.00 api

Equivalent Calibrator API Reference:225.9 api

Field Verification	Shop	Field	Units
Background	19.6	23.5	api
Background + Calibrator	245.5	243.6	api
Calibrator	225.9	220.1	api

Shop	Field	Difference	Tolerance
225.9	220.1	5.8	+/- 9.00

DUAL SPACED NEUTRON SHOP CALIBRATION

Tool Name: DSNT - 11019641

Reference Calibration Date: 04-Aug-18 12:26:27

Engineer: SEAN WOLTEMATH

Calibration Date: 07-Nov-18 10:07:09

Software Version: WL INSITE R5.8.9 (Build 6)

Calibration Version: 1

Logging Source S/N: DSN-436

Tank Serial Number: EL RENO HWT

Reference value assigned to Tank: 56.100

Snow Block S/N: 12156883

Calibration Tank Water Temperature: 66 degF

Min. Tool Housing Outside Diameter: 3.625 in

CALIBRATION CONSTANTS			
Measurement	Prev. Value	New Value	Control Limit On New Value
Gain:	0.97742	0.98053	0.900 - 1.100

WATER TANK SUMMARY (Horizontal Water Tank)				
Measurement	Current Reading (Previous Coef.)	Calibrated (New Coef.)	Change	Control Limit On Change
Porosity (decp):	0.2348	0.2358	0.0010	+/- 0.0020
Calibrated Ratio:	10.5259	10.5595	0.034	+/- 0.050

VERIFIER		
Measurement	Value	Control Limit
Snow-Block Porosity (decp):	0.0724	0.02000 - 0.09000

PASS/FAIL SUMMARY	
Background Check:	Passed
Gain-Range Check:	Passed

Gain Range Check:

Passed

Snow-Block Check:

Passed

DUAL SPACED NEUTRON FIELD CALIBRATION

Tool Name: DSNT - 11019641

Reference Calibration Date: 07-Nov-18 10:07:09

Engineer: WHITLOCK

Calibration Date: 11-Feb-19 10:55:12

Software Version: WL INSITE R5.8.9 (Build 6)

Calibration Version: 1

Logging Source S/N: DSN-436

Snow Block S/N: 12156883

NEUTRON FIELD-CHECK SUMMARY

	Shop	Field	Difference	Control Limit On Change
Snow-Block Porosity (decp):	0.0724	0.0771	0.0047	+/- 0.0150

PASS/FAIL SUMMARY

Block Change Check:	Passed
Snow Block Stat Check:	Passed
Temperature Check:	Passed

DENSITY CALIPER SHOP CALIBRATION

Tool Name: SDLT - 10960494

Reference Calibration Date: 01-Jan-70 00:00:00

Engineer: SEAN WOLTEMATH

Calibration Date: 28-Dec-18 10:43:24

Software Version: WL INSITE R5.6.3 (Build 4)

Calibration Version: 1

Host Tool Name: DSNT - 11019641

CALIBRATION COEFFICIENTS

Measurement	Previous Value	New Value	Control Limit On New Value
Pad Offset	-3977.11	-3977.11	-7000.00 - -1000.00
Pad Gain	0.0003897	0.0003897	0.0002000 - 0.0006000
Arm Offset	-3073.13	-3073.13	-5000.00 - 3000.00
Arm Gain	0.0005210	0.0005210	0.0003000 - 0.0007000
Arm Power	-0.000005094	-0.000005094	-0.000010000 - 0.000010000

The ring diameter is computed from: $DIAMETER = PAD\ EXTENSION + ARM\ EXTENSION + TOOL\ DIAMETER$

Tool Diameter: 4.50 in

CALIBRATION RINGS

Measurement	Current Reading (Previous Coeff.)	Calibrated (New Coeff.)	Change	Control Limit On New Value
PAD EXTENSION:				
Small Ring (in)	2.00	2.00	0.00	+/- 0.20
Medium Ring (in)	3.75	3.75	0.00	+/- 0.20
RING DIAMETER:				
Small Ring (in)	6.50	6.50	0.00	+/- 0.20
Medium Ring (in)	8.25	8.25	0.00	+/- 0.20
Large Ring (in)	15.00	15.00	0.00	+/- 0.20

PASS/FAIL SUMMARY

Calibration-Coefficients Range Check:	Passed
Ring-Measurement Check:	Passed

PASS/FAIL SUMMARY

Calibration-Coefficients Range Check:	Passed
---------------------------------------	--------

SDLT CALIPER FIELD CALIBRATION

Tool Name: SDLT - 10960494

Reference Calibration Date: 28-Dec-18 10:43:24

Engineer: WHITLOCK

Calibration Date: 11-Feb-19 10:52:29

Software Version: WL INSITE R5.6.3 (Build 4)

Calibration Version: 1

MEASURED CALIPER VALUES

	(mmho/m)	(mmho/m)		(mmho/m)	(mmho/m)		(mmho/m)	(mmho/m)	
A1 (80")	0.000	< 0.750	Pass	0.000	< 0.750	Pass	0.000	< 0.750	Pass
A2 (50")	0.000	< 0.750	Pass	0.000	< 0.750	Pass	0.000	< 0.750	Pass
A3 (29")	0.000	< 0.750	Pass	0.000	< 0.750	Pass	0.000	< 0.750	Pass
A4 (17")	0.000	< 0.750	Pass	0.000	< 0.750	Pass	0.000	< 0.750	Pass
A5 (10")	0.000	< 0.750	Pass	0.000	< 0.750	Pass	0.000	< 0.750	Pass
A6 (6")	0.000	< 0.750	Pass	0.000	< 0.750	Pass	0.000	< 0.750	Pass

AVERAGES

	R12KHz			R36KHz			R72KHz		
	Measured (mmho/m)	Expected (mmho/m)	Pass/Fail	Measured (mmho/m)	Expected (mmho/m)	Pass/Fail	Measured (mmho/m)	Expected (mmho/m)	Pass/Fail
A1 (80")	0.000	< 0.500	Pass	-0.001	> -0.500	Pass	-0.006	> -0.500	Pass
A2 (50")	0.000	< 0.500	Pass	-0.001	> -0.500	Pass	-0.005	> -0.500	Pass
A3 (29")	-0.000	< 0.500	Pass	-0.001	> -0.500	Pass	-0.003	> -0.500	Pass
A4 (17")	-0.002	> -0.500	Pass	-0.006	> -0.500	Pass	-0.022	> -0.500	Pass
A5 (10")	-0.010	> -0.500	Pass	-0.017	> -0.500	Pass	-0.036	> -0.500	Pass
A6 (6")	0.014	< 0.500	Pass	0.063	< 0.500	Pass	0.138	< 0.500	Pass

GAIN TOLERANCE

R12KHz

	Measured (mmho/m)	Last Month (mmho/m)	Difference (mmho/m)	Tolerance (mmho/m)	Pass/Fail
A1 (80")	-213173456.000	-213653808.000	480352.000	10682690.400	Pass
A2 (50")	-205651744.000	-206143280.000	491536.000	10307164.000	Pass
A3 (29")	-200817664.000	-201197776.000	380112.000	10059888.800	Pass
A4 (17")	-200193568.000	-200629872.000	436304.000	10031493.600	Pass
A5 (10")	-200252336.000	-200678960.000	426624.000	10033948.000	Pass
A6 (6")	-199820688.000	-200219344.000	398656.000	10010967.200	Pass

R36KHz

	Measured (mmho/m)	Last Month (mmho/m)	Difference (mmho/m)	Tolerance (mmho/m)	Pass/Fail
A1 (80")	48114080.000	48477272.000	363192.000	2423863.600	Pass
A2 (50")	33966292.000	34324412.000	358120.000	1716220.600	Pass
A3 (29")	28032378.000	28346680.000	314302.000	1417334.000	Pass
A4 (17")	27853682.000	28207516.000	353834.000	1410375.800	Pass
A5 (10")	27373208.000	27716930.000	343722.000	1385846.500	Pass
A6 (6")	26035236.000	26360300.000	325064.000	1318015.000	Pass

R72KHz

	Measured (mmho/m)	Last Month (mmho/m)	Difference (mmho/m)	Tolerance (mmho/m)	Pass/Fail
A1 (80")	-92927656.000	-93022904.000	95248.000	4651145.200	Pass
A2 (50")	-90501024.000	-90617752.000	116728.000	4530887.600	Pass
A3 (29")	-88192472.000	-88292832.000	100360.000	4414641.600	Pass
A4 (17")	-88397088.000	-88515880.000	118792.000	4425794.000	Pass
A5 (10")	-86957704.000	-87076952.000	119248.000	4353847.600	Pass
A6 (6")	-87976216.000	-88080696.000	104480.000	4404034.800	Pass

PASS/FAIL SUMMARY

Std Deviation Verification	Pass
Average Verification	Pass
Gain Tolerance Verification	Pass

MICRO LOG SHOP CALIBRATION

Tool Name: Microlog Pad - 10960494 **Reference Calibration Date:** 14-Dec-18 13:35:14

Engineer: WHITLOCK **Calibration Date:** 01-Feb-19 14:12:10

CALIBRATION COEFFICIENT SUMMARY

Measurement	Micro Log Normal		Micro Log Lateral		Units
	Measured	Calibrated	Measured	Calibrated	
Tool Zero	-0.07	-0.10	-0.01	-0.01	ohmm
Calibration Point #1	0.03	0.00	0.00	0.00	ohmm
Calibration Point #2	20.03	20.00	20.00	20.00	ohmm
Internal Reference	19.92	19.89	19.99	19.98	ohmm

Measurement	Micro Log Normal	Micro Log Lateral	Units
	Tool Value	Tool Value	
Tool Zero	0.39	0.30	V
Calibration Point #1	26.06	2.13	V
Calibration Point #2	5327.83	6938.00	V
Internal Reference	5298.82	6931.52	V

MICRO LOG FIELD CHECK

Tool Name: Microlog Pad - 10960494 Reference Calibration Date: 01-Feb-19 14:12:10
 Engineer: WHITLOCK Calibration Date: 11-Feb-19 11:12:53
 Software Version: WL INSITE R5.8.9 (Build 6) Calibration Version: 1

Measurement	Micro Log Normal		Micro Log Lateral		Units
	Shop	Field	Shop	Field	
Tool Zero	-0.10	-0.10	-0.01	-0.01	ohmm
Internal Reference	19.89	19.90	19.98	19.99	ohmm

Summary				
Signal	Shop	Field	Difference	Tolerance
Microlog Normal	19.89	19.90	-0.01	+/- 0.80
Microlog Lateral	19.98	19.99	-0.01	+/- 0.80

SPECTRAL DENSITY SHOP CALIBRATION

Tool Name: SDLT Pad - 11213308 Reference Calibration Date: 14-Dec-18 10:49:18
 Engineer: WHITLOCK Calibration Date: 14-Dec-18 11:15:00
 Software Version: WL INSITE R5.8.9 (Build 6) Calibration Version: 1

Logging Source S/N: 5475GW

Aluminum Block S/N: El Reno Aluminum Block

Density: 2.581g/cc

Pe: 3.170

Magnesium Block S/N: El Reno Magnesium Block

Density: 1.687g/cc

Pe: 2.594

DENSITY CALIBRATION SUMMARY

Measurement	Previous Value	New Value	Control Limit
Near Bar Gain	0.9935	0.9902	0.90 - 1.10
Near Dens Gain	0.9891	0.9881	0.90 - 1.10
Near Peak Gain	1.0020	1.0148	0.90 - 1.10
Near Lith Gain	1.0071	1.0175	0.90 - 1.10
Far Bar Gain	1.0015	1.0048	0.90 - 1.10
Far Dens Gain	0.9919	0.9938	0.90 - 1.10
Far Peak Gain	0.9878	0.9921	0.90 - 1.10
Far Lith Gain	0.9743	0.9808	0.90 - 1.10

Near Bar Offset	0.1918	0.2246	NONE
Near Dens Offset	0.2308	0.2401	NONE
Near Peak Offset	0.0959	-0.0122	NONE
Near Lith Offset	0.0296	-0.0574	NONE
Far Bar Offset	0.0411	0.0135	NONE

Far Dens Offset	0.1442	0.1314	NONE
Far Peak Offset	0.1660	0.1305	NONE
Far Lith Offset	0.2364	0.1860	NONE
<hr/>			
Near Bar Background	937.48	939.15	700 - 1450
Near Dens Background	311.57	312.43	230 - 480
Near Peak Background	135.23	136.70	100 - 210
Near Lith Background	166.58	166.31	125 - 260
Far Bar Background	479.15	478.16	450 - 900
Far Dens Background	191.75	190.12	175 - 345
Far Peak Background	77.50	76.92	70 - 140
Far Lith Background	79.00	78.81	75 - 145

CALIBRATION BLOCK SUMMARY				
Measurement	Current Reading (Previous Coef)	Calibrated (New Coef)	Change	Control Limit On Change
MAGNESIUM				
Density (g/cc)	1.689	1.687	-0.002	+/- 0.015
Pe	2.556	2.551	-0.005	+/- 0.150
ALUMINUM				
Density (g/cc)	2.580	2.581	0.001	+/- 0.01500
Pe	3.107	3.123	0.016	+/- 0.150

TOOL SUMMARY				
Measurement	Near Detector		Far Detector	
	Value	Control Limits	Value	Control Limits
QUALITY				
Background	-0.0000	+/- 0.0110	-0.0004	+/- 0.0140
Magnesium Block	-0.0005	+/- 0.0110	-0.0010	+/- 0.0140
Aluminum Block	-0.0013	+/- 0.0110	0.0004	+/- 0.0140
Resolution	9.27	6.00 - 11.50	9.45	6.00 - 11.50
Internal Verifier(B+D+P+L)	1555	1200 - 2700	824	800 - 1700

PASS/FAIL SUMMARY	
Background Quality Check:	Passed
Background Range Check:	Passed
Background Resolution Check:	Passed
Background Verification Check:	Passed
Magnesium Quality Check:	Passed
Aluminum Quality Check:	Passed
Gains Check:	Passed
Changes in Calibration Blocks:	Passed

SPECTRAL DENSITY FIELD CHECK

Tool Name: SDLT Pad - 11213308

Reference Calibration Date: 14-Dec-18 11:15:00

Engineer: WHITLOCK

Calibration Date: 11-Feb-19 11:09:03

Software Version: WL INSITE R5.8.9 (Build 6)

Calibration Version: 1

Pad Temperature: 64.4 degF

DENSITY FIELD CALIBRATION SUMMARY				
Measurement	Shop	Field	Change	Control Limit +/-
Near (B+D+P+L) cps	1554.595	1558.839	4.244	15.869
Far (B+D+P+L) cps	824.007	820.518	-3.489	15.826
Near Resolution	9.27	9.21	-0.060	0.50
Far Resolution	9.45	9.46	0.010	1.00

PASS/FAIL SUMMARY

Bkg Quality Check:	Passed
Bkg Resolution Check:	Passed
Bkg Verification Check:	Passed

CALIBRATION SUMMARY

Sensor	Shop	Field	Post	Difference	Tolerance	Units
Depth Panel-12345678						
Tension Zero	0.00	-----	-----	0.00	-----	lbs
Tension Cal	7830.00	-----	-----	0.00	-----	lbs
RWCH-12345678						
DH Tension Zero	0.00	-----	-----	0.00	-----	lbs
DH Tension Cal	1480.00	-----	-----	0.00	-----	lbs
GTET-11013113						
Gamma Ray Calibrator	225.9	220.1	-----	5.8	+/- 9.00	api
DSNT-11019641						
Snow-Block Porosity	0.0724	0.0771	-----	-0.0047	+/- 0.0150	decp
SDLT-10960494						
Pad Extension	3.75	3.79	-----	-0.04	+/-0.10	in
Ring Diameter	8.25	8.25	-----	0.00	+/-0.15	in
ACRt Sonde-11830728						
Mud Cell	0.99	-----	-----	0	-----	ohm-m
Microlog Pad-10960494						
MicroLog Normal	19.89	19.90	-----	-0.01	+/-0.80	ohmm
MicroLog Lateral	19.98	19.99	-----	-0.01	+/-0.80	ohmm
SDLT Pad-11213308						
Near(B+D+P+L)	1554.595	1558.839	-----	-4.244	+/-15.869	cps
Far(B+D+P+L)	824.007	820.518	-----	3.489	+/-15.826	cps

Data: RUSSELL_NUSS\0001 RWCH-SP-GTET-DSNT-SDLT-ACRTIDLE Date: 12-Feb-19 13:22:15



PARAMETERS REPORT

Depth (ft)	Tool Name	Mnemonic	Description	Value	Units
TOP					
	SHARED	BS	Bit Size	7.875	in
	SHARED	UBS	Use Bit Size instead of Caliper for all applications.	No	
	SHARED	MDBS	Mud Base	Water	
	SHARED	MDWT	Borehole Fluid Weight	9.000	ppg
	SHARED	WAGT	Weighting Agent	Natural	
	SHARED	BSAL	Borehole salinity	0.00	ppm
	SHARED	FSAL	Formation Salinity NaCl	0.00	ppm
	SHARED	KPCT	Percent K in Mud by Weight?	0.00	%
	SHARED	RMUD	Mud Resistivity	0.550	ohmm
	SHARED	TRM	Temperature of Mud	75.0	degF
	SHARED	CSD	Logging Interval is Cased?	No	
	SHARED	ICOD	AHV Casing OD	5.500	in
	SHARED	CSTR	Compressive Strength	1000.00	psia
	SHARED	ST	Surface Temperature	75.0	degF
	SHARED	TD	Total Well Depth	10000.00	ft
	SHARED	BHT	Bottom Hole Temperature	115.0	degF
	SHARED	SVTM	Navigation and Survey Master Tool	NONE	
	SHARED	AZTM	High Res Z Accelerometer Master Tool	GTET	
	SHARED	TEMM	CBM Temperature Master Tool	GTET	

SHARED	SOCI	Source of Casing Information	Parameters	
SHARED	MSAL	Water-base mud filtrate salinity	0.00	ppm
Rwa / CrossPlot	XPOK	Process Crossplot?	Yes	
Rwa / CrossPlot	FCHO	Select Source of F	Automatic	
Rwa / CrossPlot	AFAC	Archie A factor	0.6200	
Rwa / CrossPlot	MFAC	Archie M factor	2.1500	
Rwa / CrossPlot	RMFR	Rmf Reference	0.10	ohmm
Rwa / CrossPlot	TMFR	Rmf Ref Temp	75.00	degF
Rwa / CrossPlot	RWA	Resistivity of Formation Water	0.05	ohmm
Rwa / CrossPlot	ADP	Use Air Porosity to calculate CrossplotPhi	No	
Rwa / CrossPlot	BHSM	Borehole Size Source Tool	SDLT	
Rwa / CrossPlot	ROIN	Input for RO Calculation	Rwa	
GTET	GROK	Process Gamma Ray?	Yes	
GTET	GEOK	Process Gamma Ray EVR?	No	
GTET	TPOS	Tool Position for Gamma Ray Tools.	Eccentered	
GTET	BHSM	Borehole Size Source Tool	SDLT	
DSNT	DNOK	Process DSN?	Yes	
DSNT	DEOK	Process DSN EVR?	No	
DSNT	NLIT	Neutron Lithology	Limestone	
DSNT	DNSO	DSN Standoff - 0.25 in (6.35 mm) Recommended	0.250	in
DSNT	DNTT	Temperature Correction Type	None	
DSNT	DPRS	DSN Pressure Correction Type	None	
DSNT	SHCO	View More Correction Options	No	
DSNT	UTVD	Use TVD for Gradient Corrections?	No	
DSNT	LHWT	Logging Horizontal Water Tank?	No	
DSNT	UCLA	Classic Neutron Parameter utilized?	No	
DSNT	BHSM	Borehole Size Source Tool	SDLT	
SDLT	CLOK	Process Caliper Outputs?	Yes	
Microlog Pad	MLOK	Process MicroLog Outputs?	Yes	
SDLT Pad	DNOK	Process Density?	Yes	
SDLT Pad	DNOK	Process Density EVR?	No	
SDLT Pad	CB	Logging Calibration Blocks?	No	
SDLT Pad	SPVT	SDLT Pad Temperature Valid?	Yes	
SDLT Pad	DTWN	Disable temperature warning	No	
SDLT Pad	DMA	Formation Density Matrix	2.710	g/cc
SDLT Pad	DFL	Formation Density Fluid	1.000	g/cc
SDLT Pad	BHSM	Borehole Size Source Tool	SDLT	
ACRt Sonde	RTOK	Process ACRt?	Yes	
ACRt Sonde	MNSO	Minimum Tool Standoff	1.50	in
ACRt Sonde	TCS1	Temperature Correction Source	FP Lwr & FP Upr	
ACRt Sonde	TPOS	Tool Position	Free Hanging	
ACRt Sonde	RMOP	Rmud Source	Mud Cell	
ACRt Sonde	RMIN	Minimum Resistivity for MAP	0.20	ohmm
ACRt Sonde	RMAX	Maximum Resistivity for MAP	200.00	ohmm
ACRt Sonde	THQY	Threshold Quality	0.50	
ACRt Sonde	MRFX	Fixed mud resistivity	2000	ohmm
ACRt Sonde	BHSM	Borehole Size Source Tool	SDLT	
ACRt Sonde	MBFL	Apply Corkscrew Effect?	No	

BOTTOM

TOOL STRING DIAGRAM REPORT

Description	Overbody Description	O.D.	Diagram	Sensors @ Delays	Length	Accumulated Length	
		Ø 2.310 in →		← Fishing Neck @ 57.71 ft		58.59 ft	
RWCH-12345678 135.00 lbs		Ø 3.625 in →		← Load Cell @ 54.91 ft ← BH Temperature @ 54.34 ft	6.25 ft		
	Weak Point Solid-00000025 0.01 lbs	Ø 0.010 in* →				52.34 ft	
SP Sub-11812437 60.00 lbs		Ø 3.625 in →		← SP @ 50.56 ft ← Z-Accelerometer @ 48.15 ft	3.74 ft	48.60 ft	
GTET-11013113 165.00 lbs		Ø 3.625 in →		← GammaRay @ 42.54 ft	8.52 ft	40.08 ft	
DSNT-11019641 174.00 lbs		Ø 3.625 in →		← DSN Far @ 33.15 ft ← DSN Near @ 32.40 ft	9.69 ft	30.40 ft	
SDLT-10960494 360.00 lbs	SDLT Pad-11213308 65.00 lbs Microlog Pad-10960494 8.00 lbs RAM-Cs137-00005475 1.00 lbs	Ø 4.500 in → Ø 4.500 in* → Ø 4.750 in* → Ø 0.800 in* →		← Microlog @ 22.58 ft ← SDL Caliper @ 22.40 ft ← SDL @ 22.39 ft	10.81 ft	19.58 ft	
ACRt Instrument-11830684 50.00 lbs		Ø 3.625 in →	← Mud Resistivity @ 13.19 ft ← ACRt @ 9.21 ft	5.03 ft	14.55 ft		
ACRt Sonde-11830728		Ø 3.625 in →			14.22 ft		

200.00 lbs

Bull Nose-00000001
5.00 lbs

Ø 2.750 in →



Mnemonic	Tool Name	Serial Number	Weight (lbs)	Length (ft)	Accumulated Length (ft)	Max. Log. Speed (fpm)
RWCH	Releasable Wireline Cable Head	12345678	135.00	6.25	52.34	300.00
WPSS	Weak Point Solid	00000025	0.01	0.01	* 52.34	300.00
SP	SP Sub	11812437	60.00	3.74	48.60	300.00
GTET	Gamma Telemetry Tool	11013113	165.00	8.52	40.08	60.00
DSNT	Dual Spaced Neutron	11019641	174.00	9.69	30.40	60.00
SDLT	Spectral Density Tool	10960494	360.00	10.81	19.58	60.00
SDLP	Density Insite Pad	11213308	65.00	2.55	* 21.79	60.00
Cs137	Logging Source, SDLT-I, 1.78 Ci - Cs137	00005475	1.00	0.80	* 22.02	300.00
MICP	Microlog Pad	10960494	8.00	1.00	* 22.08	60.00
ACRt	Array Compensated True Resistivity Instrument Section	11830684	50.00	5.03	14.55	120.00
ACRt	Array Compensated True Resistivity Sonde Section	11830728	200.00	14.22	0.33	120.00
BLNS	Bull Nose	00000001	5.00	0.33	0.00	300.00
Total			1,223.01	58.59		

* Not included in Total Length and Length Accumulation.

Data: RUSSELL_NUSS\0001 RWCH-SP-GTET-DSNT-SDLT-ACRT\IDLE

Date: 12-Feb-19 13:23:35