



Sector Bond / Gamma Ray
CCL Log

15-167-24087-00-00

API No.

Company RUSSELL OIL INC.
Well NUSS 'D' NO. 33-1
Field NUSS
County RUSSELL State KANSAS

Location 1925' FSL & 560' FWL

Sec: 33 Twp: 15 S Rge: 14 W

Other Services

Elevation
K.B. 1923
D.F.
G.L. 1918

Permanent Datum	GROUND LEVEL	Elevation 1918
Log Measured From	KELLY BUSHING	8 Ft. Above Perm. Datum
Drilling Measured From	KELLY BUSHING	
Run Number	ONE	
Date Survey	03-07-2019	
Date Cementing	02-12-2019	
Type Cementing Operation	PRIMARY	
Depth Driller	3455	
Depth Logger	3429	
Logged Interval	3428 to 2200	to
Casing Driller	5.5 @ TD	@
Float Collar -- D.V. Tool	////	////
Squeeze Depth	////	
Amount & Type Cement	////	
Amount & Type Admix	////	
Type Fluid In Hole	WATER	
Fluid Level	FULL	
Salinity PPM CL	////	
Weight lb/gal -- Vis.	////	////
Approx. Logged Cement Top	2338	
Calculated Cement Top	////	
Max. Hole Temperature	110	
Tool No.	RBT 05	
Spacing Recorded	3' 5"	
Equipment -- Location	05	Hays
Recorded By	SCOTT CLERMONT	
Witnessed By	TODD BROWN	

<<< Fold Here >>>

All interpretations are opinions based on inferences from electrical or other measurements and we cannot and do not guarantee the accuracy or correctness of any interpretation, and we shall not, except in the case of gross or willful negligence on our part, be liable or responsible for any loss, costs, damages, or expenses incurred or sustained by anyone resulting from any interpretation made by any of our officers, agents or employees. These interpretations are also subject to our general terms and conditions set out in our current Price Schedule.

Comments

Thank you for using Excel Wireline
(620) 388-5676
RUSSELL KANSAS
SOUTH TO COUNTY LINE, 2.5 WEST
NORTH INTO



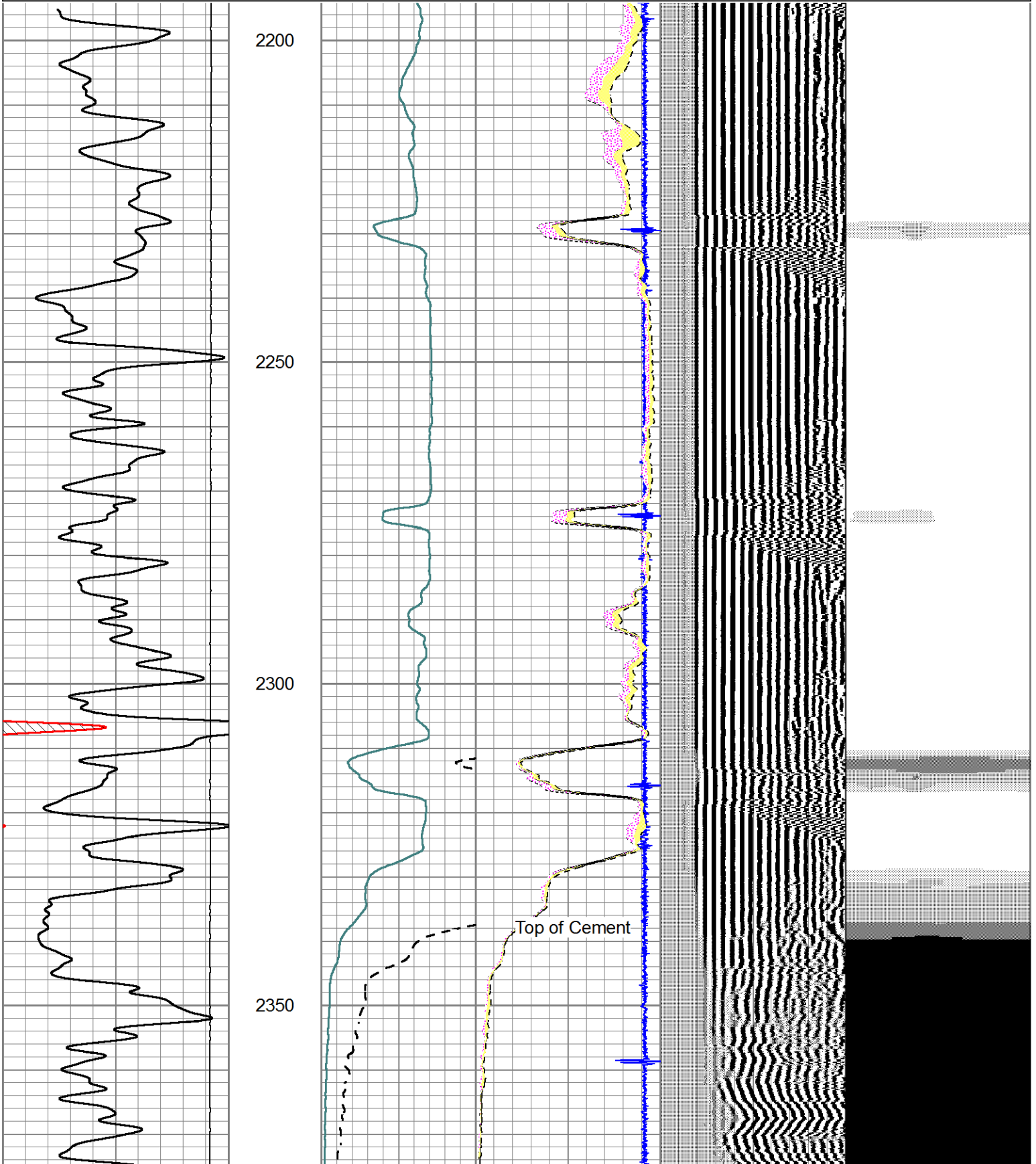
MAIN PASS

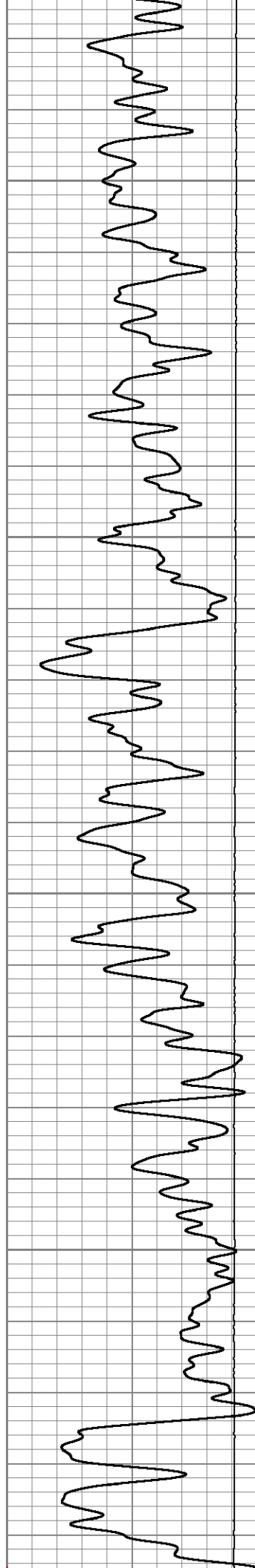
Database File russelloil_3-7-19.db
 Dataset Pathname sgrcbl/pass5.1
 Presentation Format scbl18
 Dataset Creation Thu Mar 07 09:15:52 2019
 Charted by Depth in Feet scaled 1:240

0	Gamma Ray (GAPI)	150
LTEN		
150	GR (GAPI)	300

Amplitude		0	AMPAVG	150	
0	(mV)	100	0	AMPMAX	150
Amplified Amplitude		0	0	AMPMIN	150
0	(mV)	20	1.3	CCL\$1	-0.09

200	VDL	1200	1	Sector Map	8
			25		75



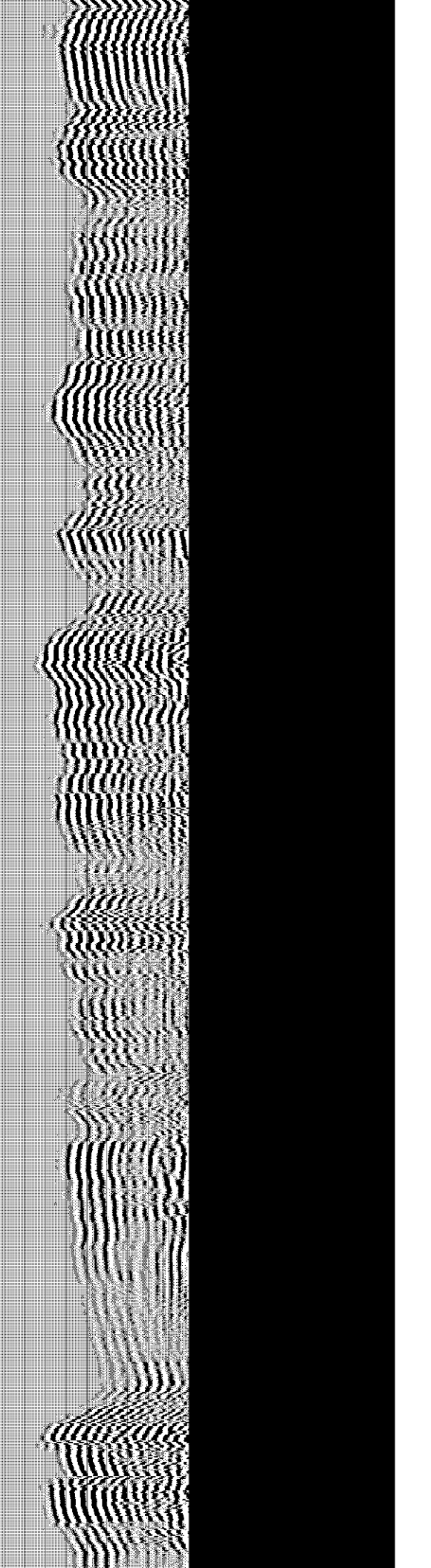
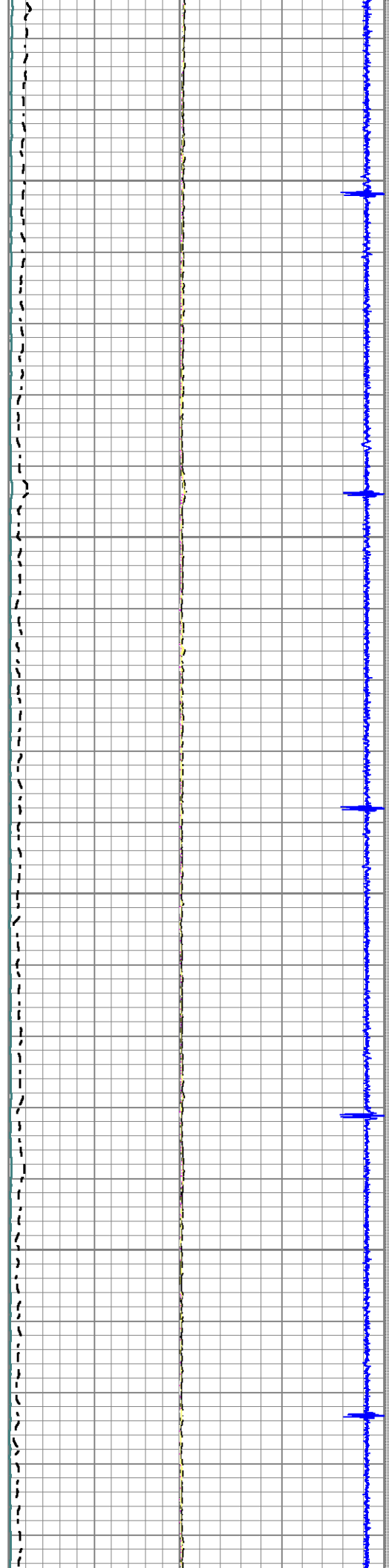


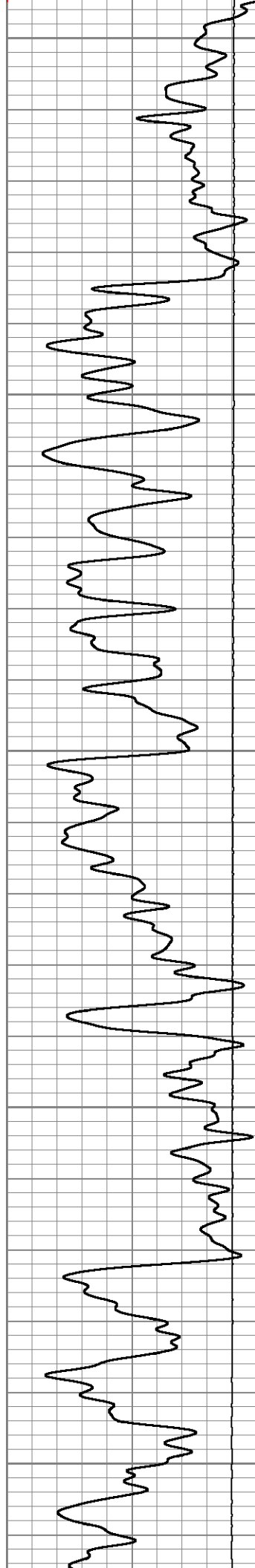
2400

2450

2500

2550





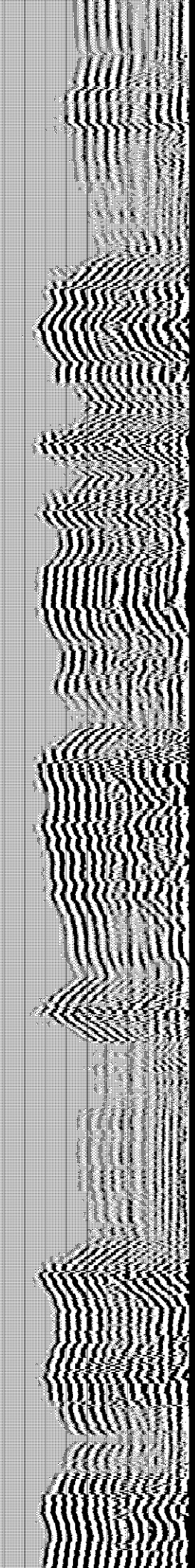
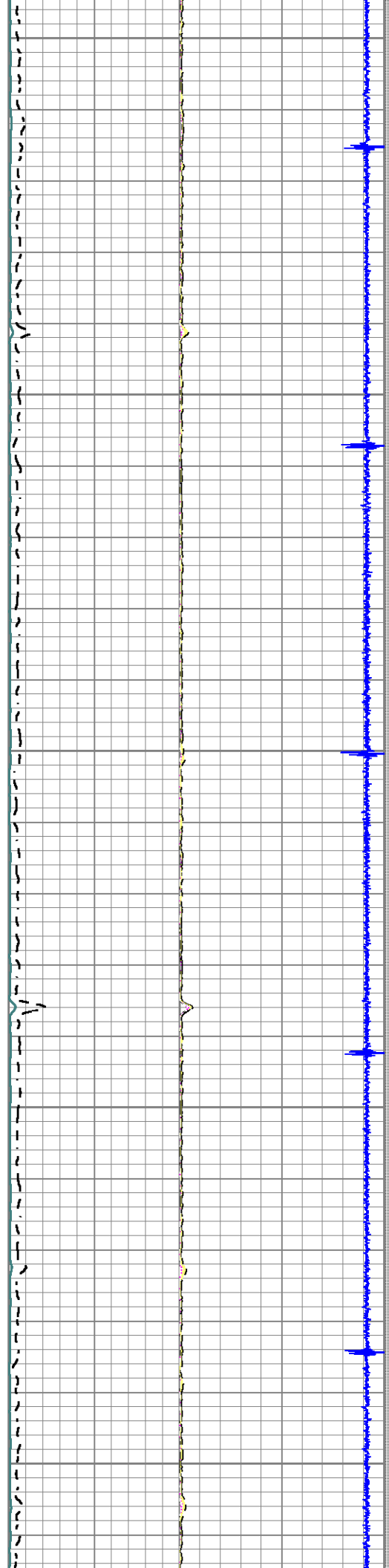
2600

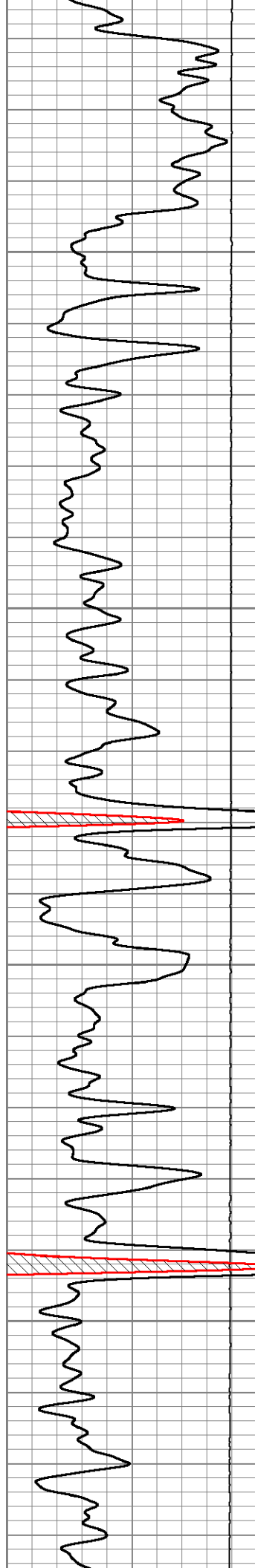
2650

2700

2750

2800



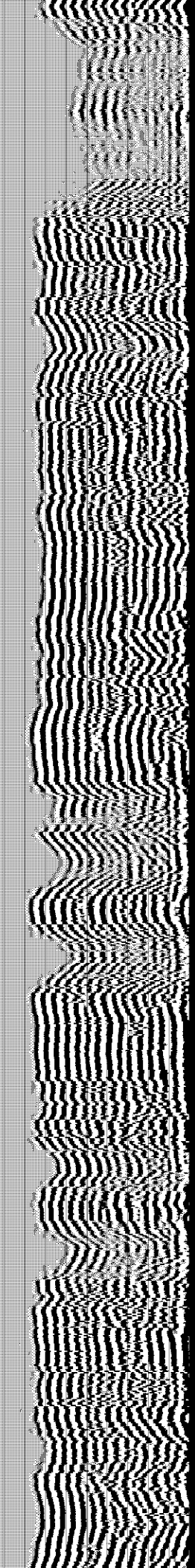
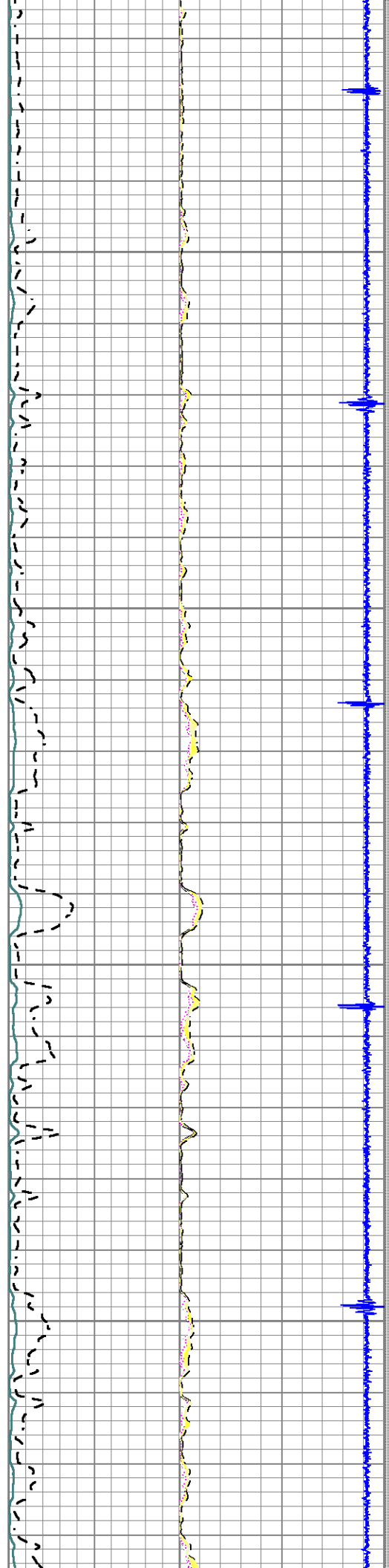


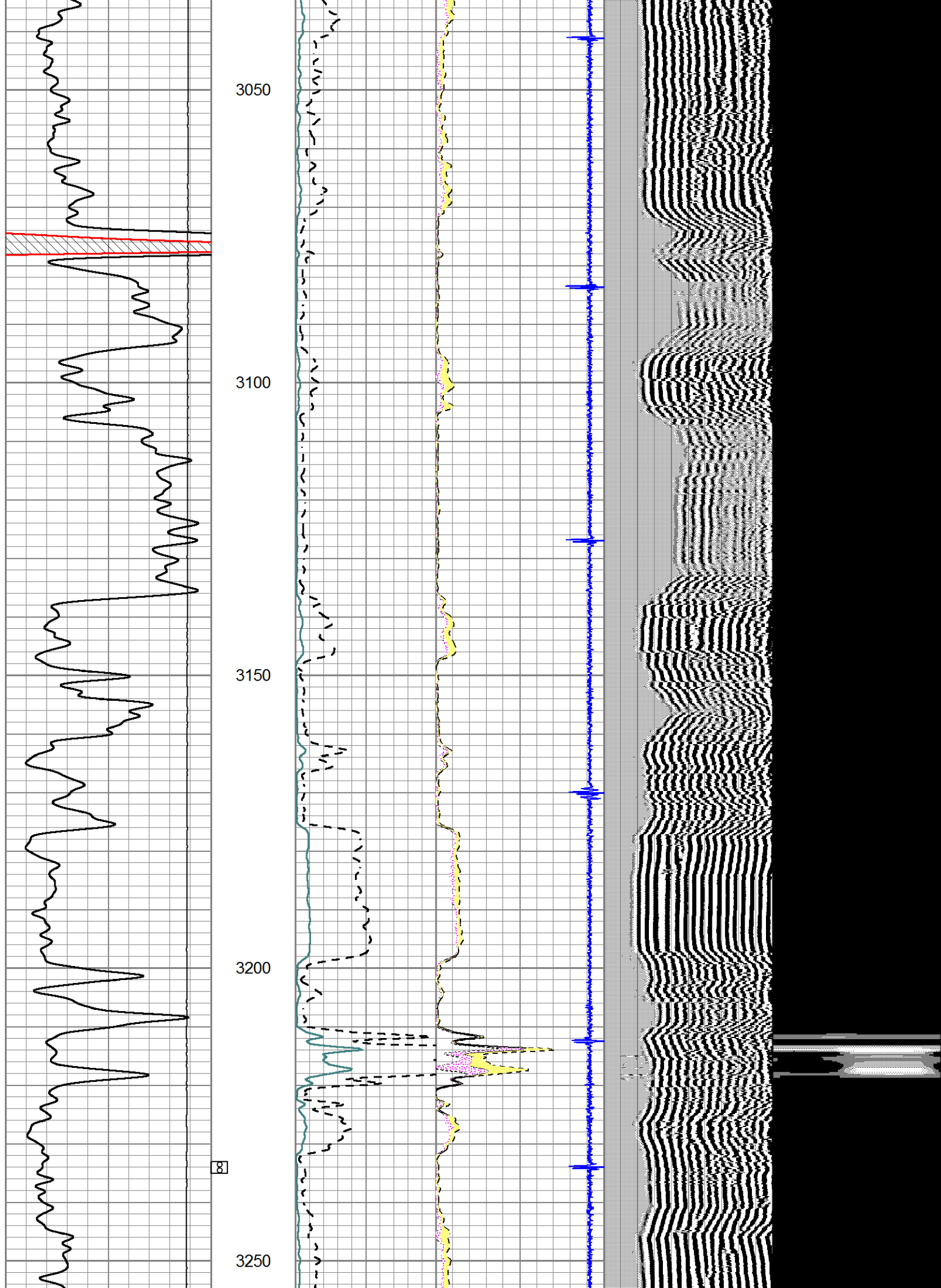
2850

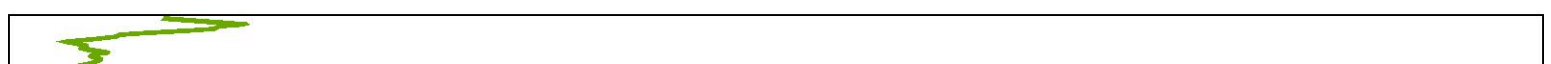
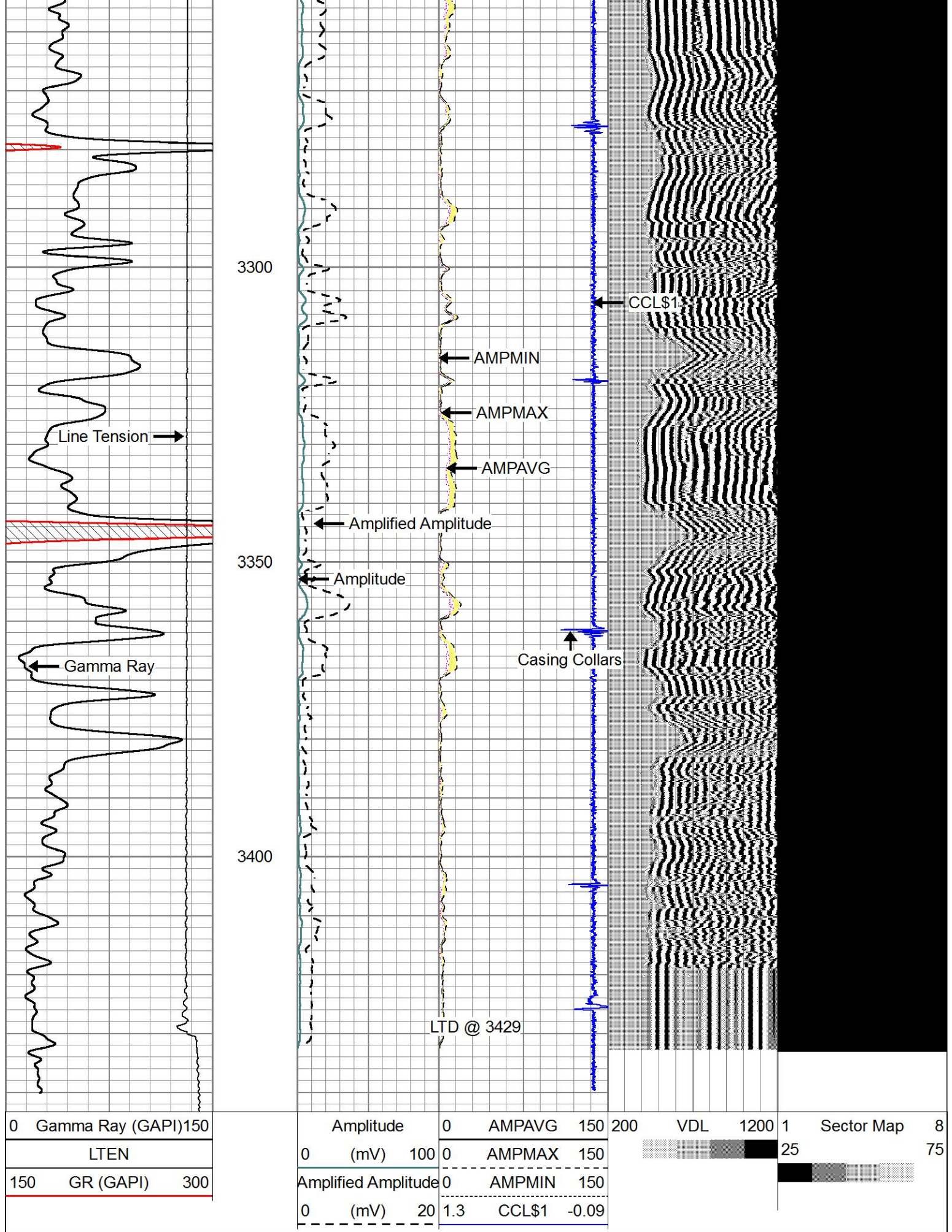
2900

2950

3000

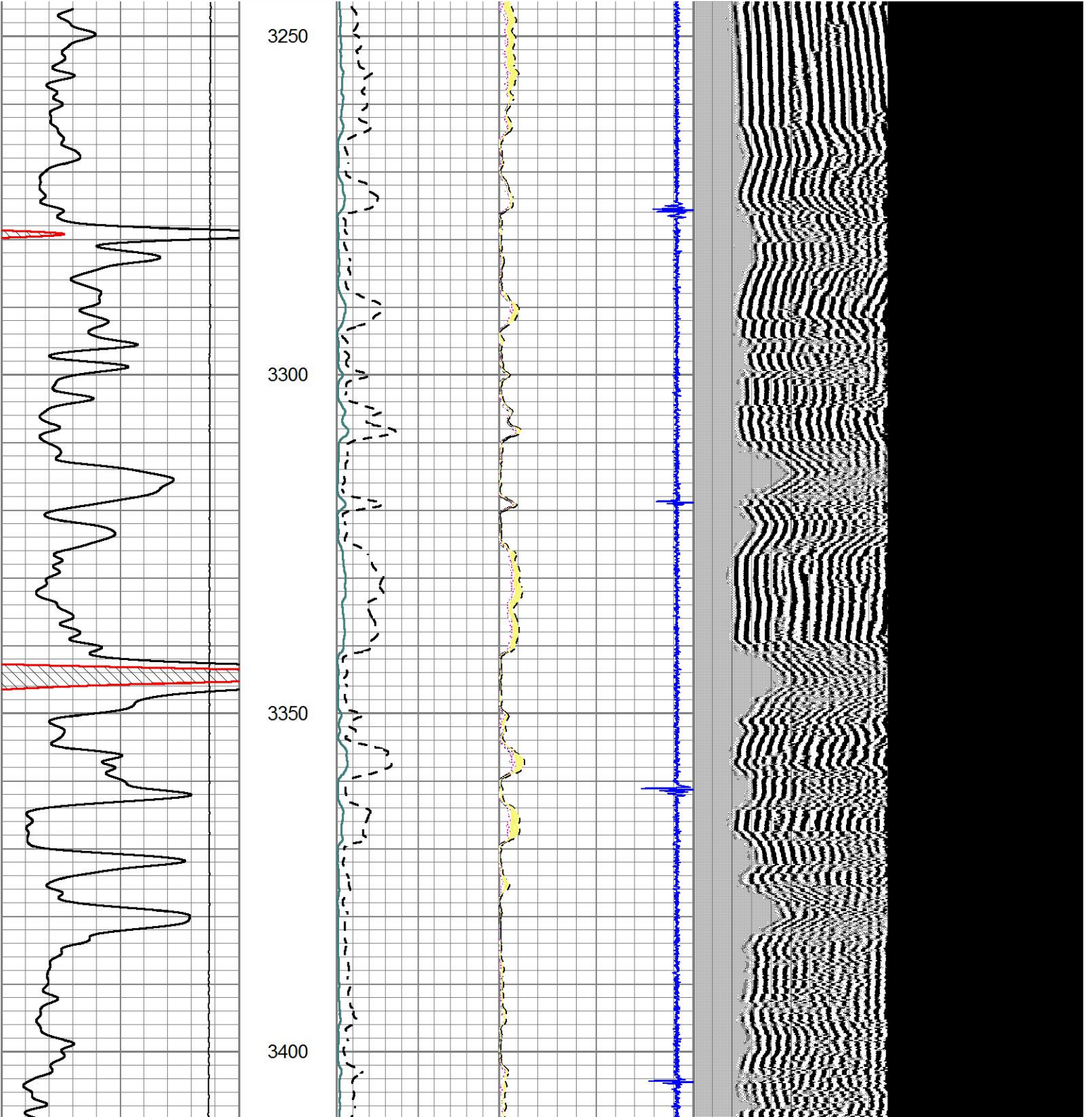


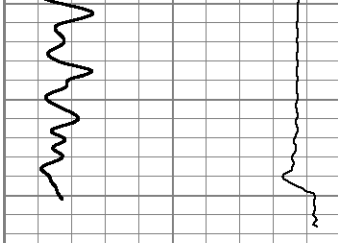




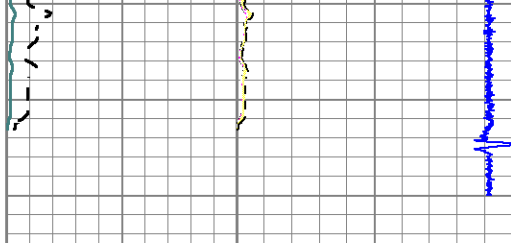
Database File russelloil_3-7-19.db
 Dataset Pathname sgrcbl/pass4
 Presentation Format scbl18
 Dataset Creation Thu Mar 07 08:30:38 2019
 Charted by Depth in Feet scaled 1:240

0	Gamma Ray (GAPI) 150	Amplitude	0	AMPAVG	150	200	VDL	1200	1	Sector Map	8
	LTEN	0 (mV) 100	0	AMPMAX	150				25		75
150	GR (GAPI) 300	Amplified Amplitude	0	AMPMIN	150						
		0 (mV) 20	1.3	CCL\$1	-0.09						

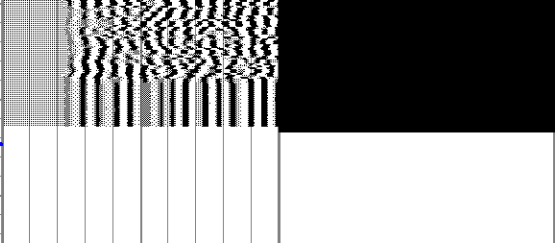




0	Gamma Ray (GAPI)	150
LTEN		
150	GR (GAPI)	300



Amplitude		0	AMPAVG	150	
0	(mV)	100	0	AMPMAX	150
Amplified Amplitude		0	AMPMIN	150	
0	(mV)	20	1.3	CCL\$1	-0.09



200	VDL	1200	1	Sector Map	8
			25		75