

Perf-Tech

Wireline Services, Inc.

DUAL RECEIVER CEMENT BOND LOG

Company: GORE OIL COMPANY		Location: LYND#7		Field: ZEMAN NORTH		County: TREGO		State: KANSAS	
Well: LYND #7		Location: 2319 FSL & 1320 FEL		AP#1: 15-195-2302-00-00		Operator: GORE SERVICES			
Log Measured From: SEC 28 T4W 11S RGE 21W		Log Measured To: GROUND LEVEL		Elevation: 2307'		Datum: MSL			
Date: APRIL 9, 2019		Drilling Operator: KELLY BUSHING &		Bottom Logged Interval: 4102' - 4105'		Casing Size: 8.625"			
Run Number: 7		BIT: FROM 312'		LEAKS: FROM 312'		LUGS: FROM 312'			
Casing Size: 8.625"		Spiral String: 5.125"		WELL: 20#		LOG: 00		Bottom: 415'	

All interpretations are opinions based on inferences from electrical or other measurements and we cannot and do not guarantee the accuracy or correctness of any interpretation, and we shall not be liable or responsible for any loss, costs, damages, or expenses incurred or sustained by anyone resulting from any interpretation made by any of our officers, agents or employees. These interpretations are also subject to our general terms and conditions set out in our current Price Schedule.

Comments

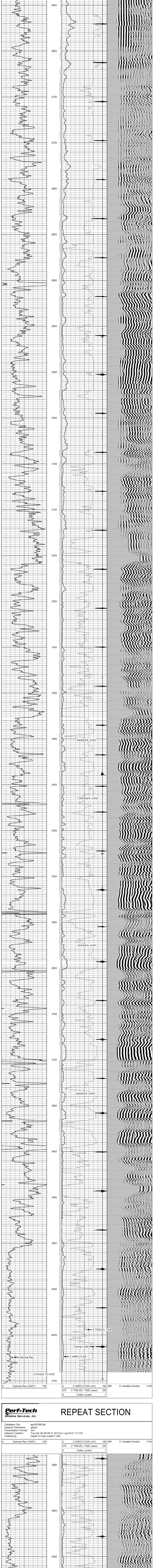
THANK YOU FOR USING
PERF-TECH WIRELINE SERVICES, INC.
785-628-3969

DIRECTIONS: RIGA EXIT & I-70
7 NORTH, WEST INTO

Perf-Tech Wireline Services, Inc.

MAIN PASS

Database File: apr191906.db
 Dataset Pathname: pass3
 Presentation Format: 3x5
 Dataset Creation: Tue Apr 09 09:18:29 2019 by Log SCH 111116
 Charted by: Depth in Feet scaled 1:240



LOGGED TO 4103'

0 Gamma Ray (GAPI) 150
 0 3' AMPLITUDE (mV) 100 200
 475 3' TRAVEL TIME (uSec) 235
 9 Collar Locator -1

Perf-Tech Wireline Services, Inc.

REPEAT SECTION

Database File: apr191906.db
 Dataset Pathname: pass2
 Presentation Format: 3x5
 Dataset Creation: Tue Apr 09 09:31 2019 by Log SCH 111116
 Charted by: Depth in Feet scaled 1:240

LOGGED TO 4103'

0 Gamma Ray (GAPI) 150
 0 3' AMPLITUDE (mV) 100 200
 475 3' TRAVEL TIME (uSec) 235
 9 Collar Locator -1