



MICRO LOG

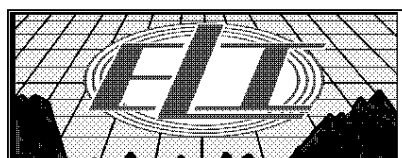
Company	LOTUS OPERATING COMPANY, LLC.	
Well	#3 GOOD	
Field	HARDTNER	
County	BARBER	
State	KANSAS	
Company	LOTUS OPERATING COMPANY, LLC.	
Well	#3 GOOD	
Field	HARDTNER	
County	BARBER	State KANSAS
Location:	API # : 15-007-24348-0000	Other Services CDL/CNL/PE DIL/SON/FF
Permanent Datum	GROUND LEVEL	Elevation 1451
Log Measured From	1100' FSL & 1230' FVL NE - NE - SW - SW	K.B. 1464 D.F. 1462 G.L. 1451
Drilling Measured From	SEC 36 TWP 34S RGE 13W KELLY BUSHING	
Date	4/4/19	
Run Number	THREE	
Depth Driller	5625	
Depth Logger	5625	
Bottom Logged Interval	5609	
Top Log Interval	3500	
Casing Driller	8 5/8" @ 268'	
Casing Logger	268	
Bit Size	7 7/8"	
Type Fluid in Hole	CHEMICAL MUD	CHLORIDES 4,000 PPM
Density / Viscosity	9.4/49	
pH / Fluid Loss	11.0/8.8	
Source of Sample	FLOWLINE	
Rim @ Meas. Temp	.600 @ .95F	
Rmf @ Meas. Temp	.450 @ .95F	
Rmc @ Meas. Temp	.720 @ .95F	
Source of Rmf / Rmc	MEASUREMENT	
Rim @ BHT	.435 @ 131F	
Time Circulation Stopped	6 HOURS	
Time Logger on Bottom	11:45 P.M.	
Maximum Recorded Temperature	131F	
Equipment Number	922339	
Location	HAYS, KANSAS	
Recorded By	JEFF LUEBBERS	
Witnessed By	TIM HELLMAN	

<<< Fold Here >>>

All interpretations are opinions based on inferences from electrical or other measurements and we cannot and do not guarantee the accuracy or correctness of any interpretation, and we shall not, except in the case of gross or willful negligence on our part, be liable or responsible for any loss, costs, damages, or expenses incurred or sustained by anyone resulting from any interpretation made by any of our officers, agents or employees. These interpretations are also subject to our general terms and conditions set out in our current Price Schedule.

Comments

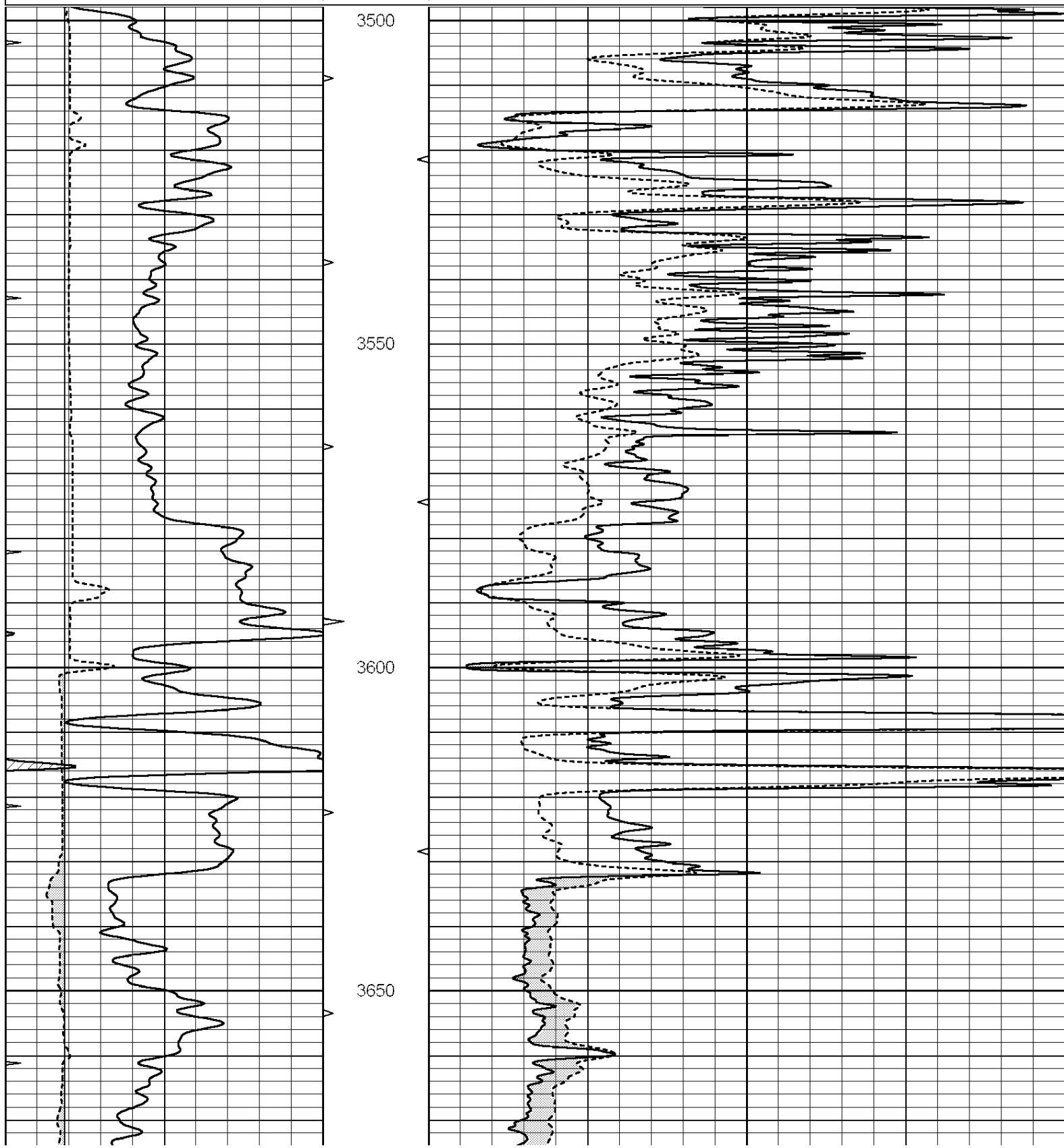
THANK YOU FOR USING ELI WIRELINE HAYS, KANSAS (785) 628-6395
 DIRECTIONS
 HARDTNER, KS., (FLASHING LIGHT) 2 W. TO "GYF HILL RD.", 1 1/4N., E. INTO JUST PAST BRIDGE

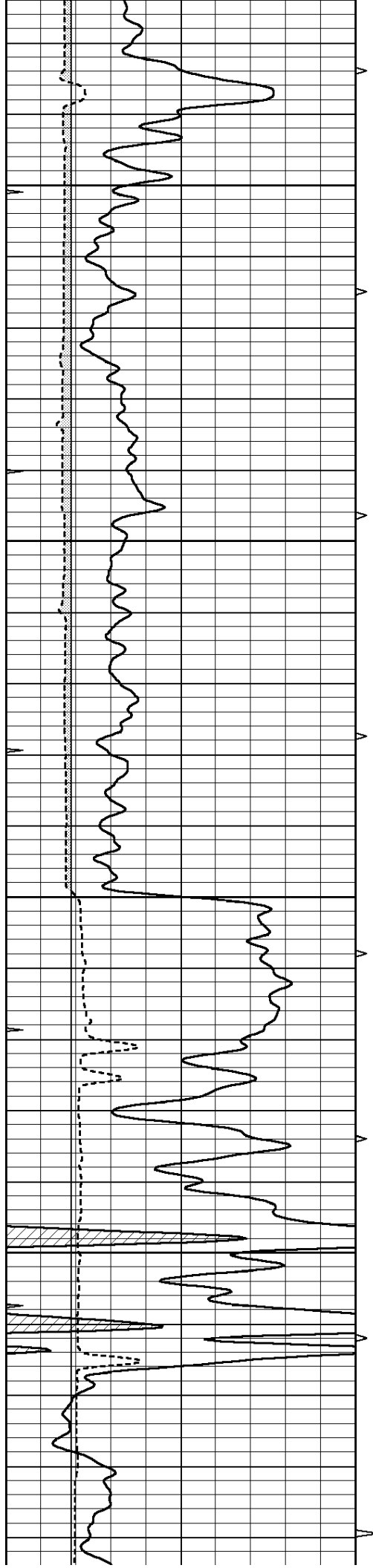


MAIN SECTION

Database File: 3608pe.db
 Dataset Pathname: pass9.2
 Presentation Format: micro
 Dataset Creation: Fri Apr 05 01:14:34 2019
 Charted by: Depth in Feet scaled 1:240

0	GAMMA RAY (GAPI)	150	ABHV	0	MEL1.5 (Ohm-m)	40
6	CALIPER (in)	16	10 (ft3)	0	MEL 20 (Ohm-m)	40
0	MINMK	20	TBHV			
			0 (ft3)	10		



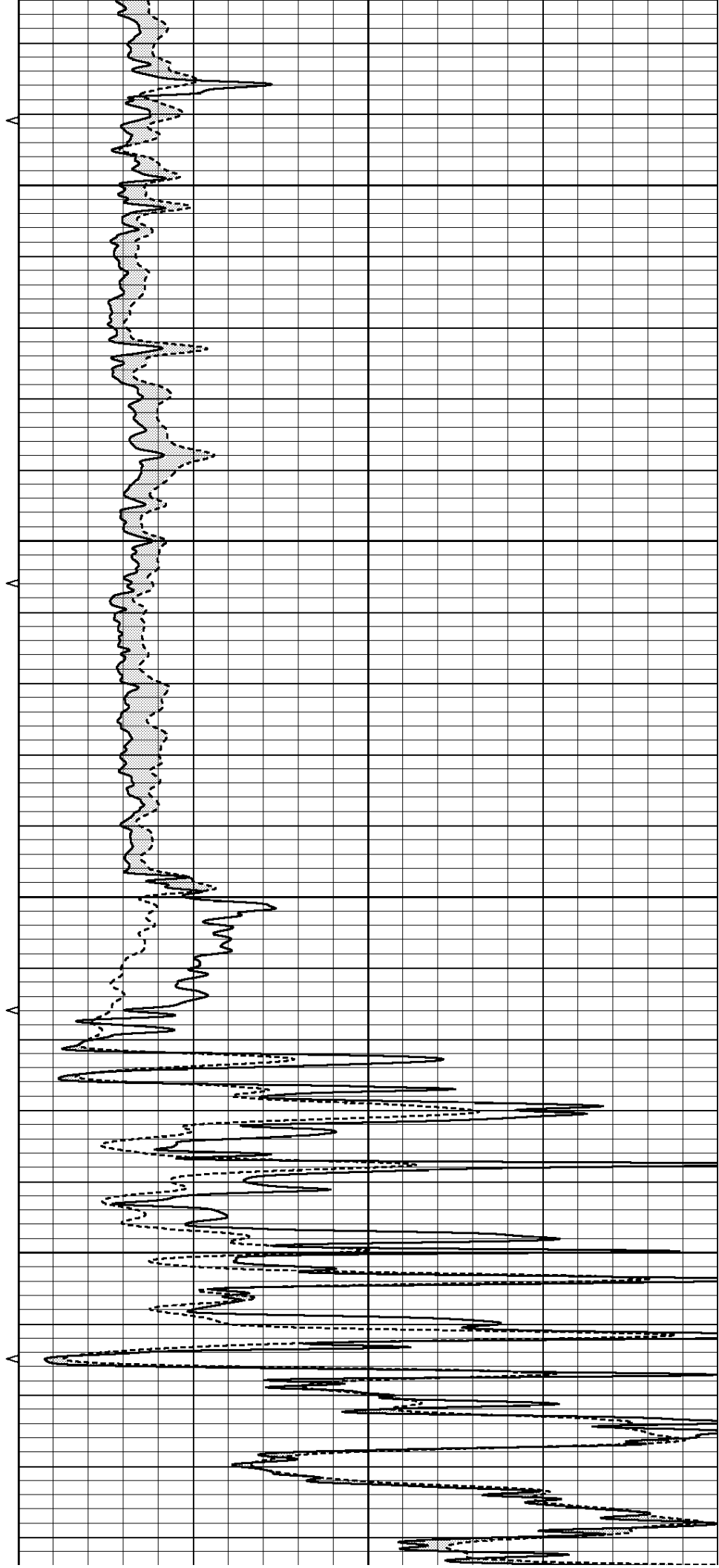


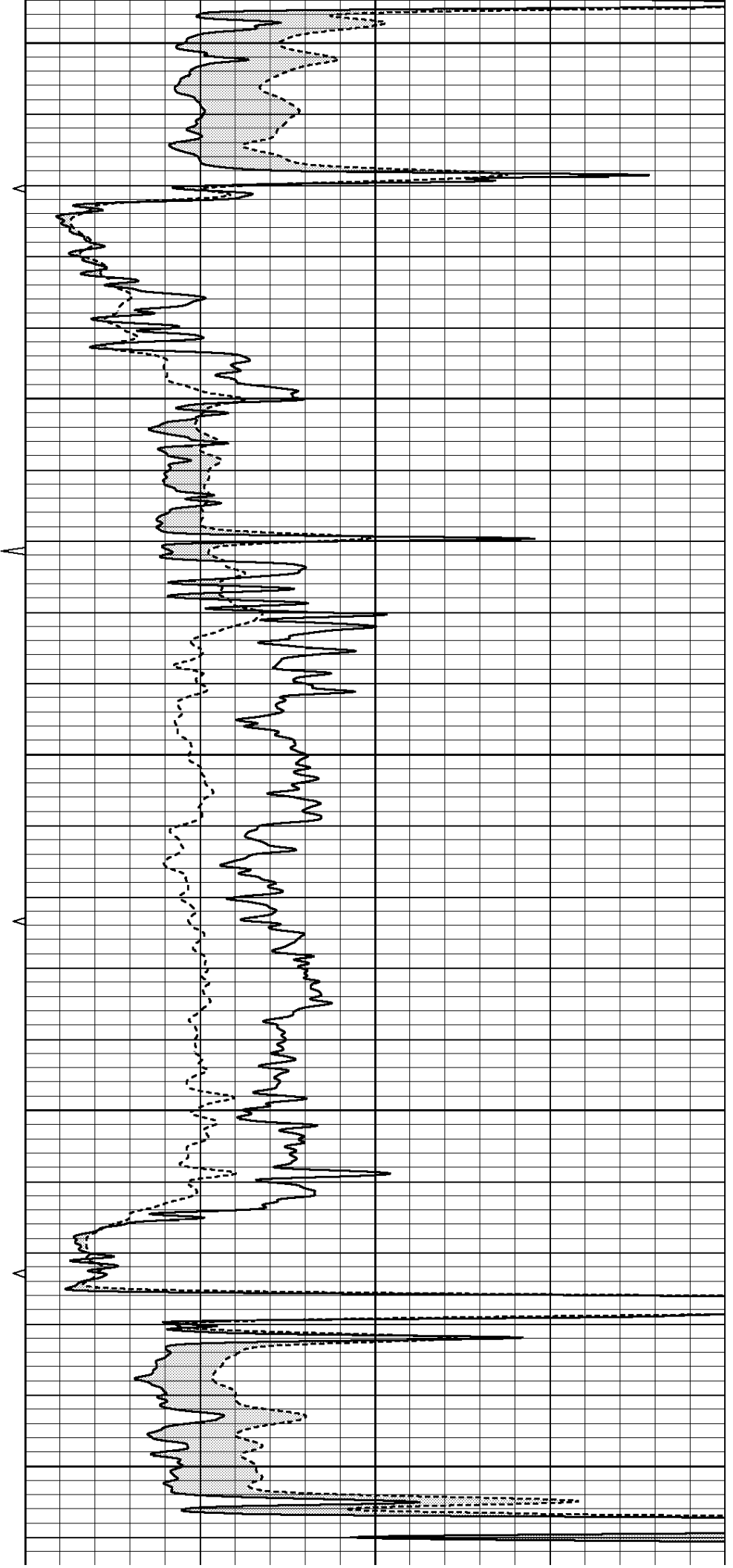
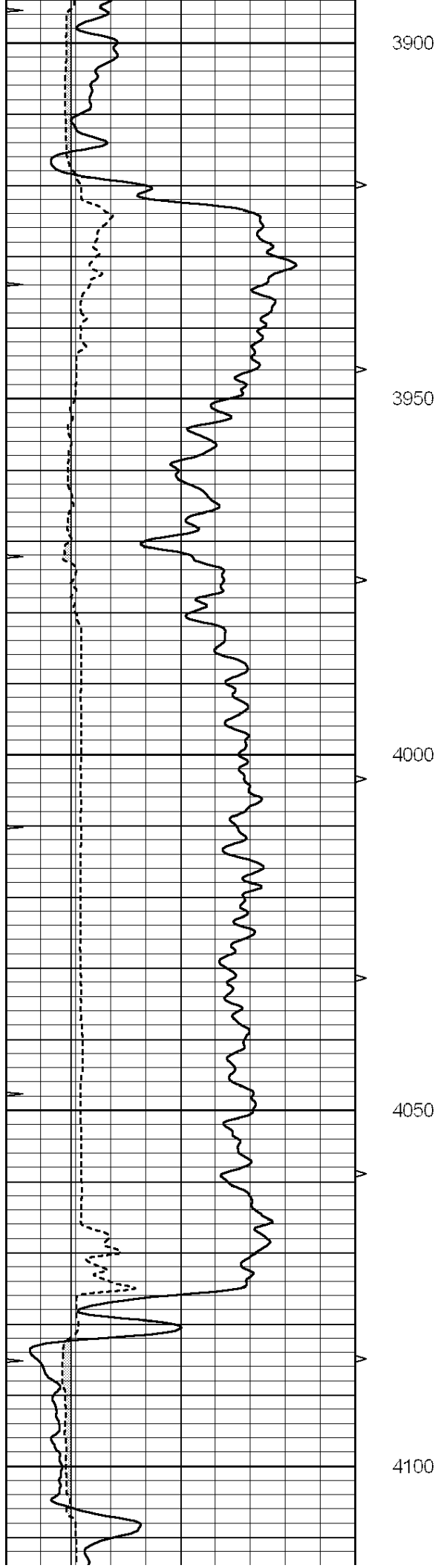
3700

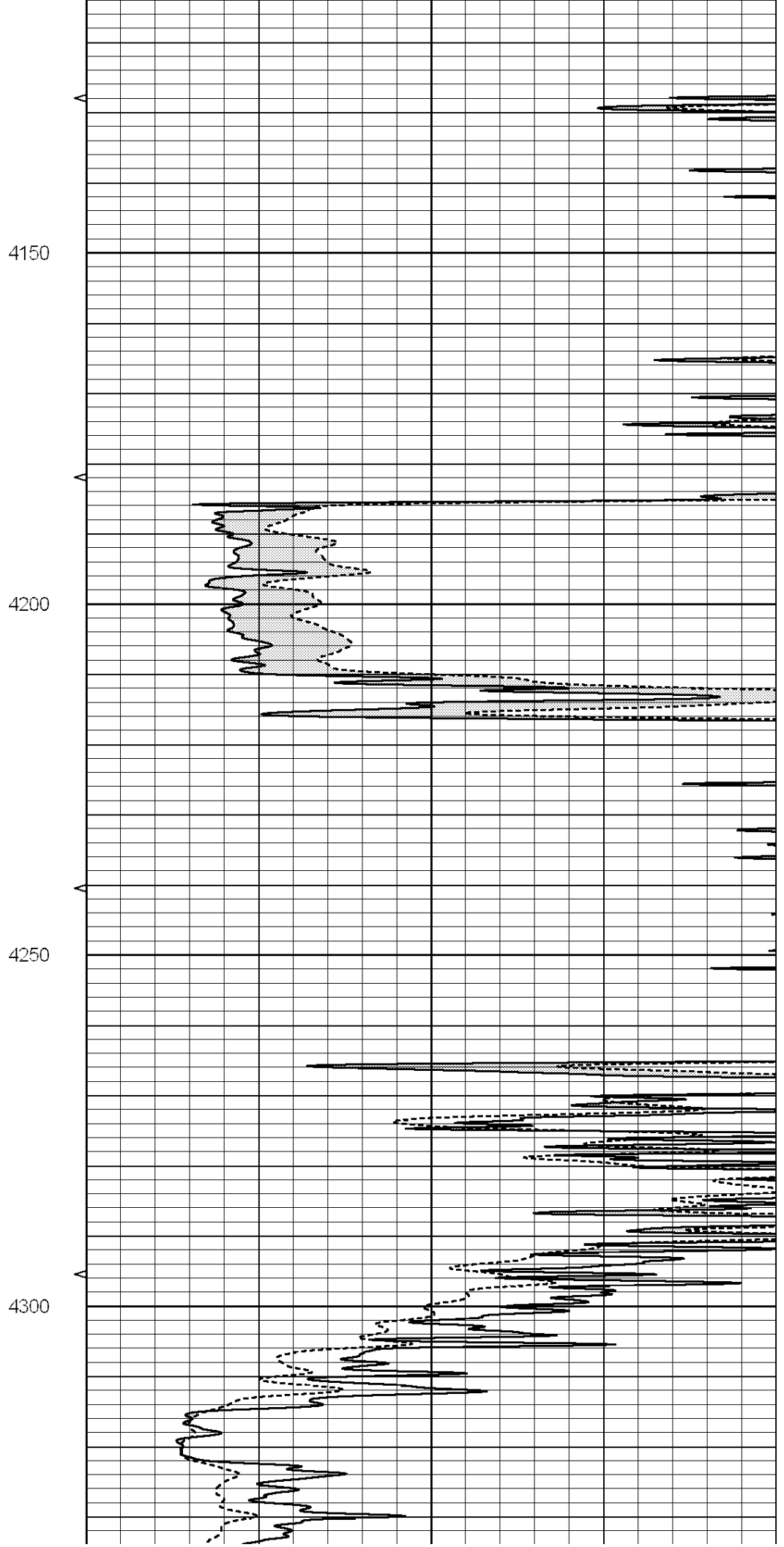
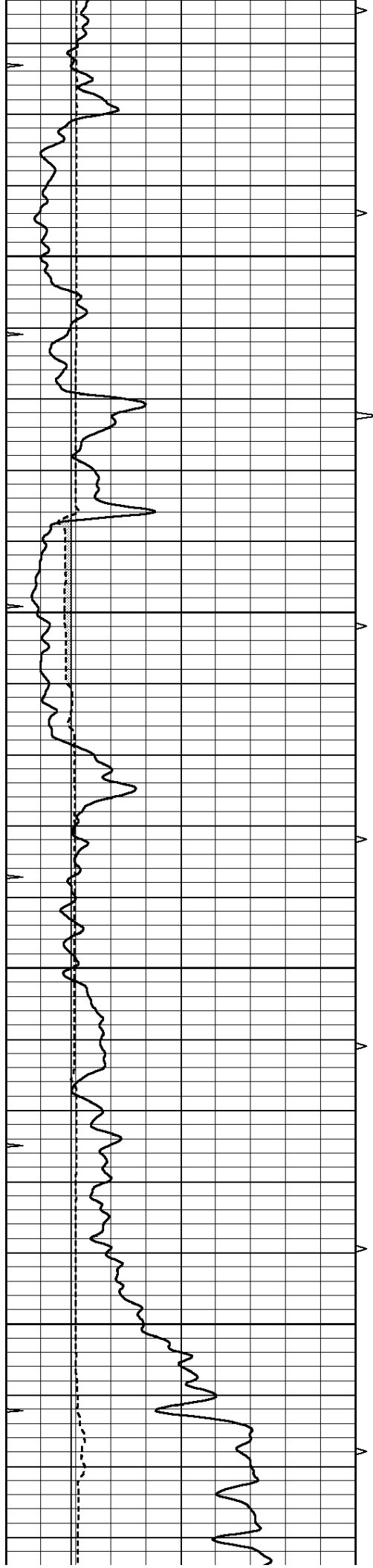
3750

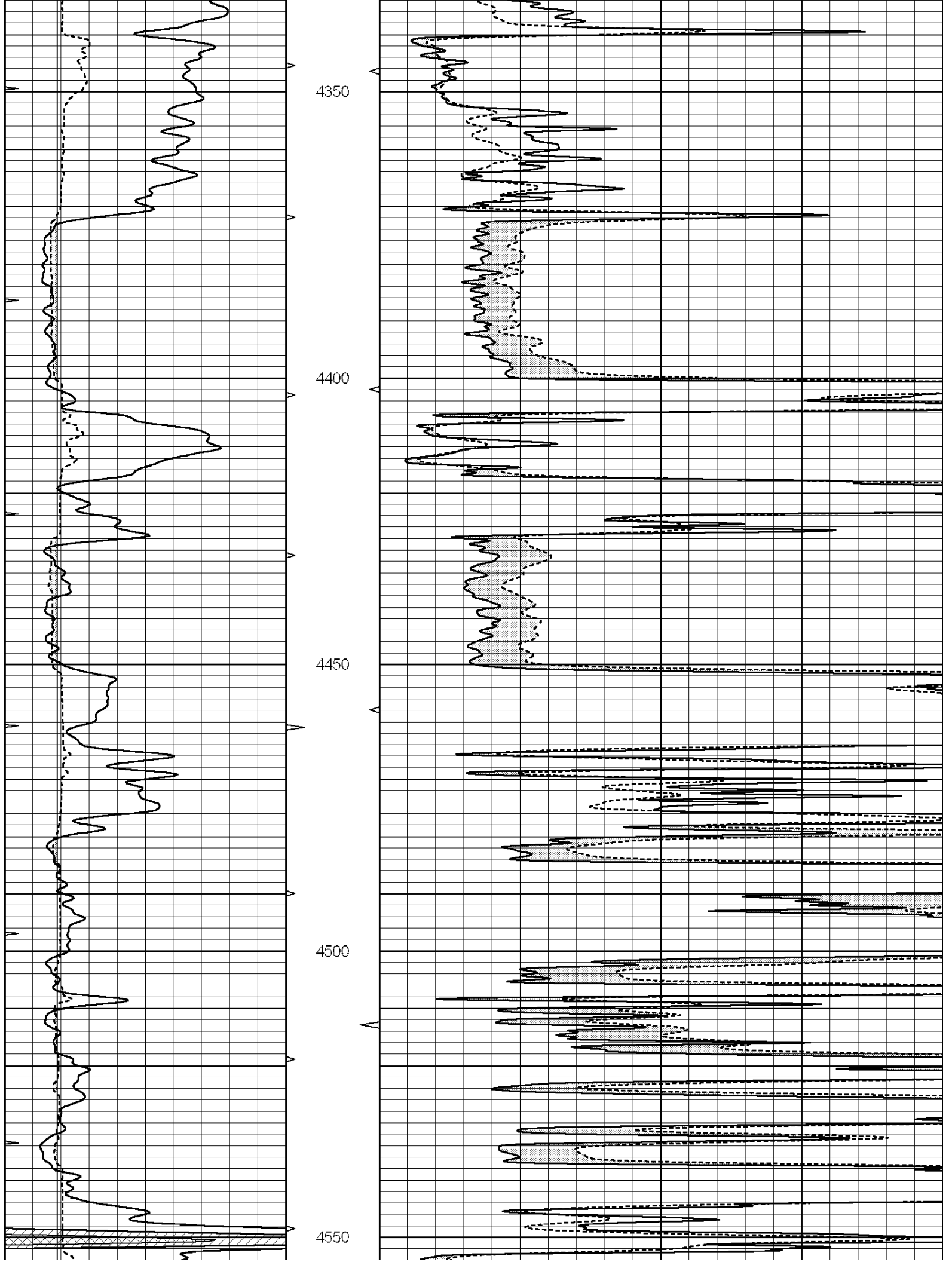
3800

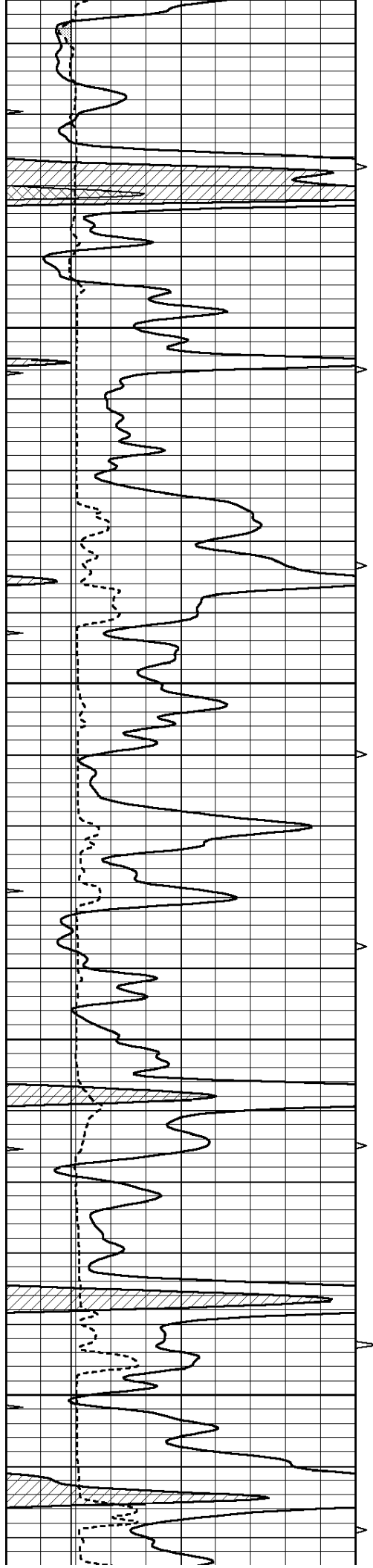
3850









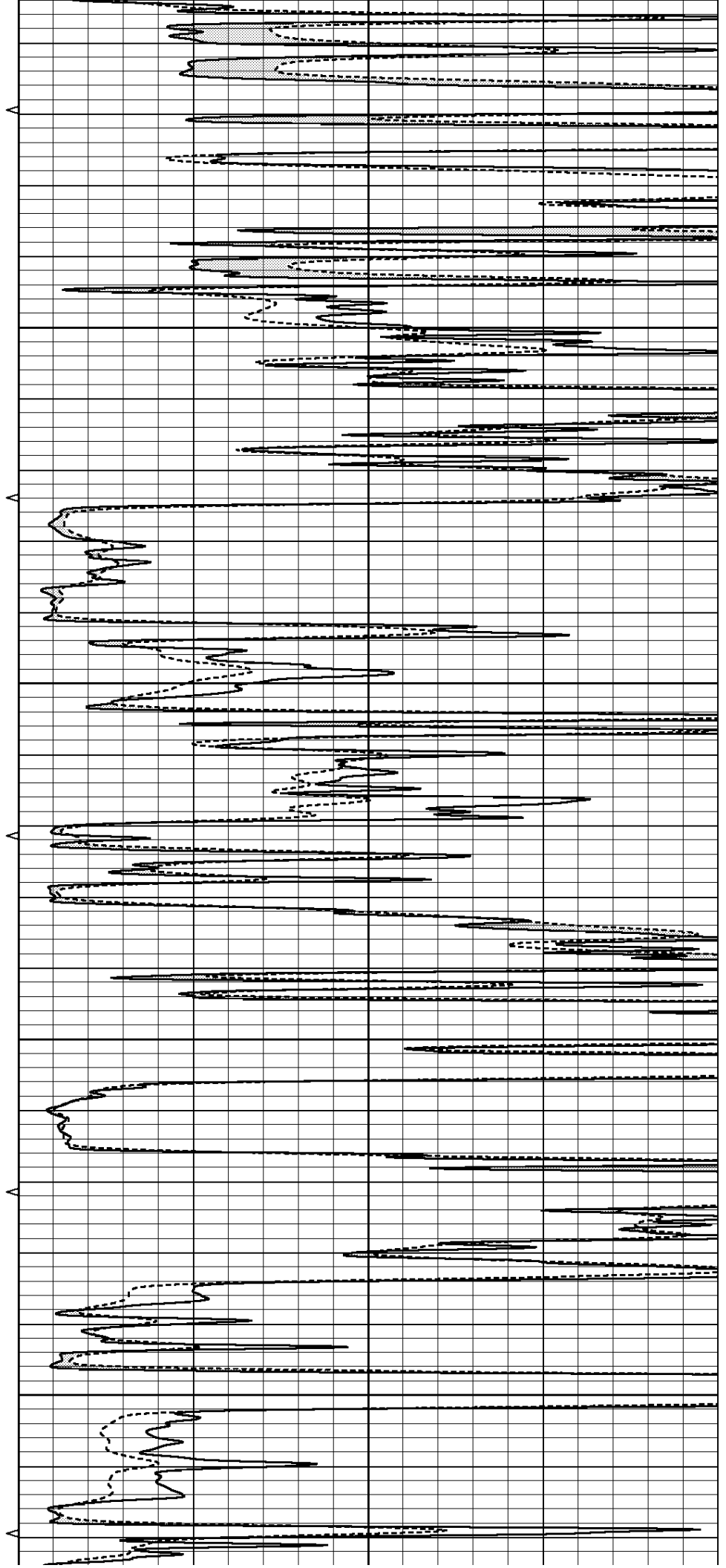


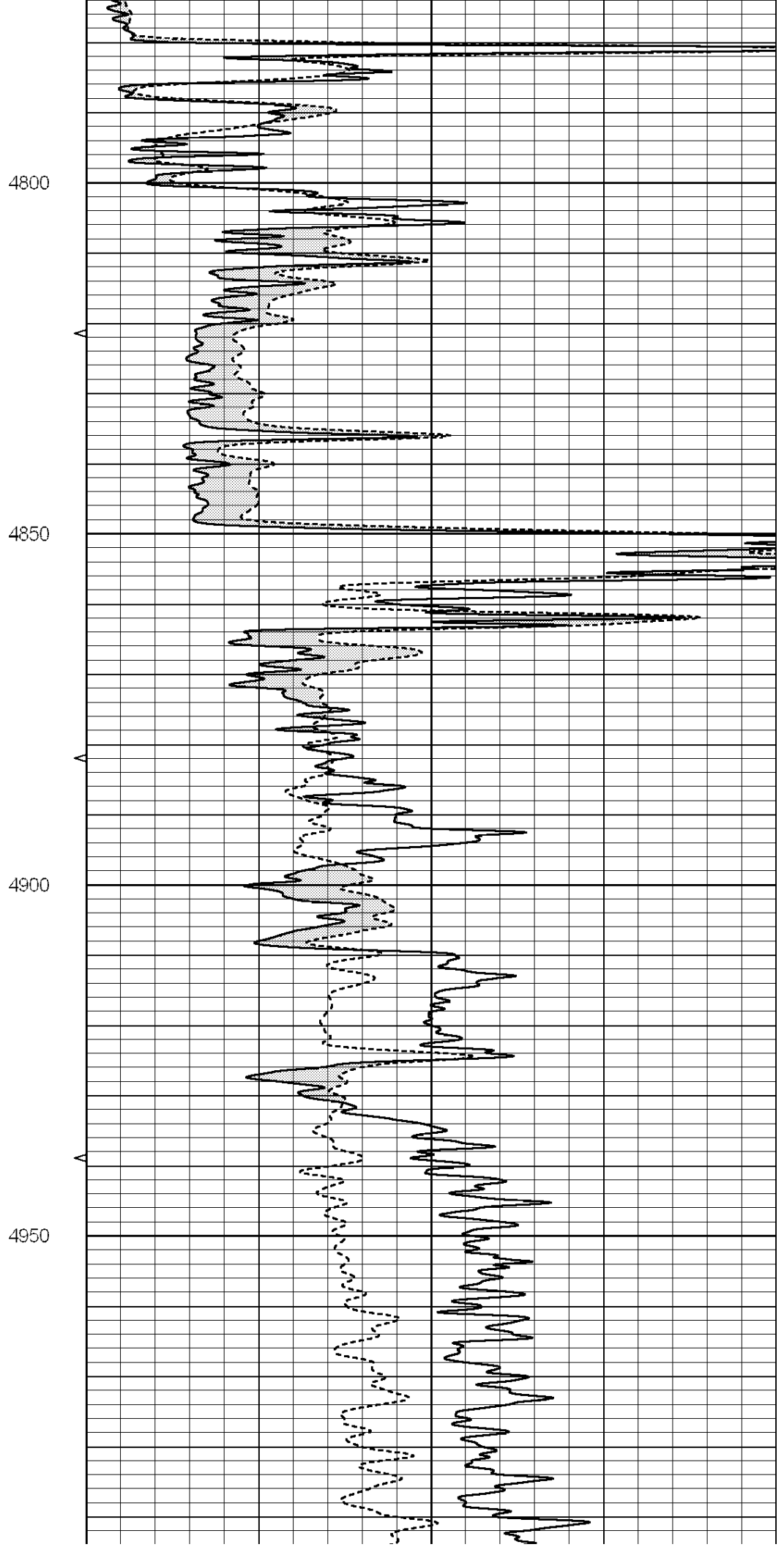
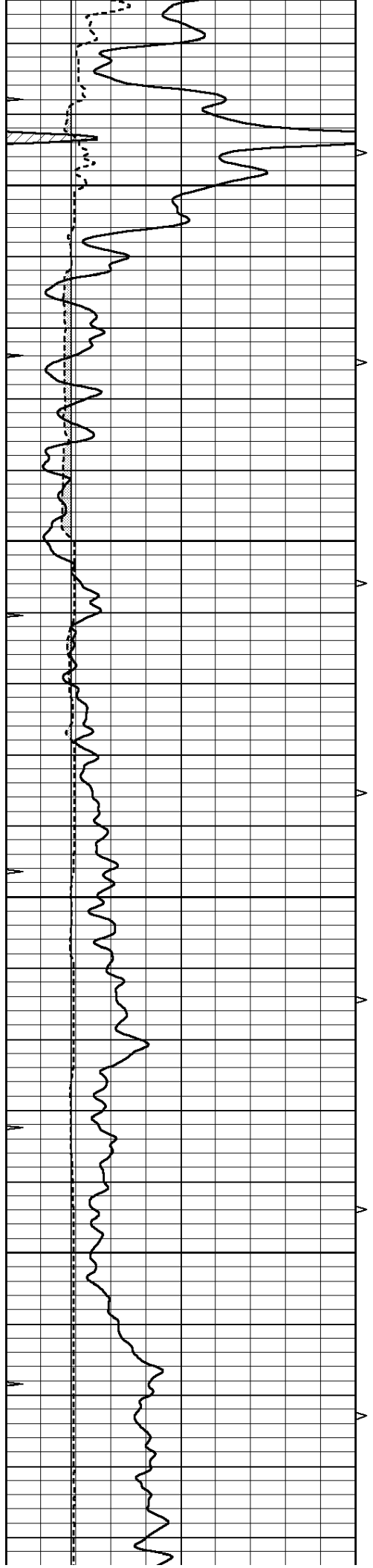
4600

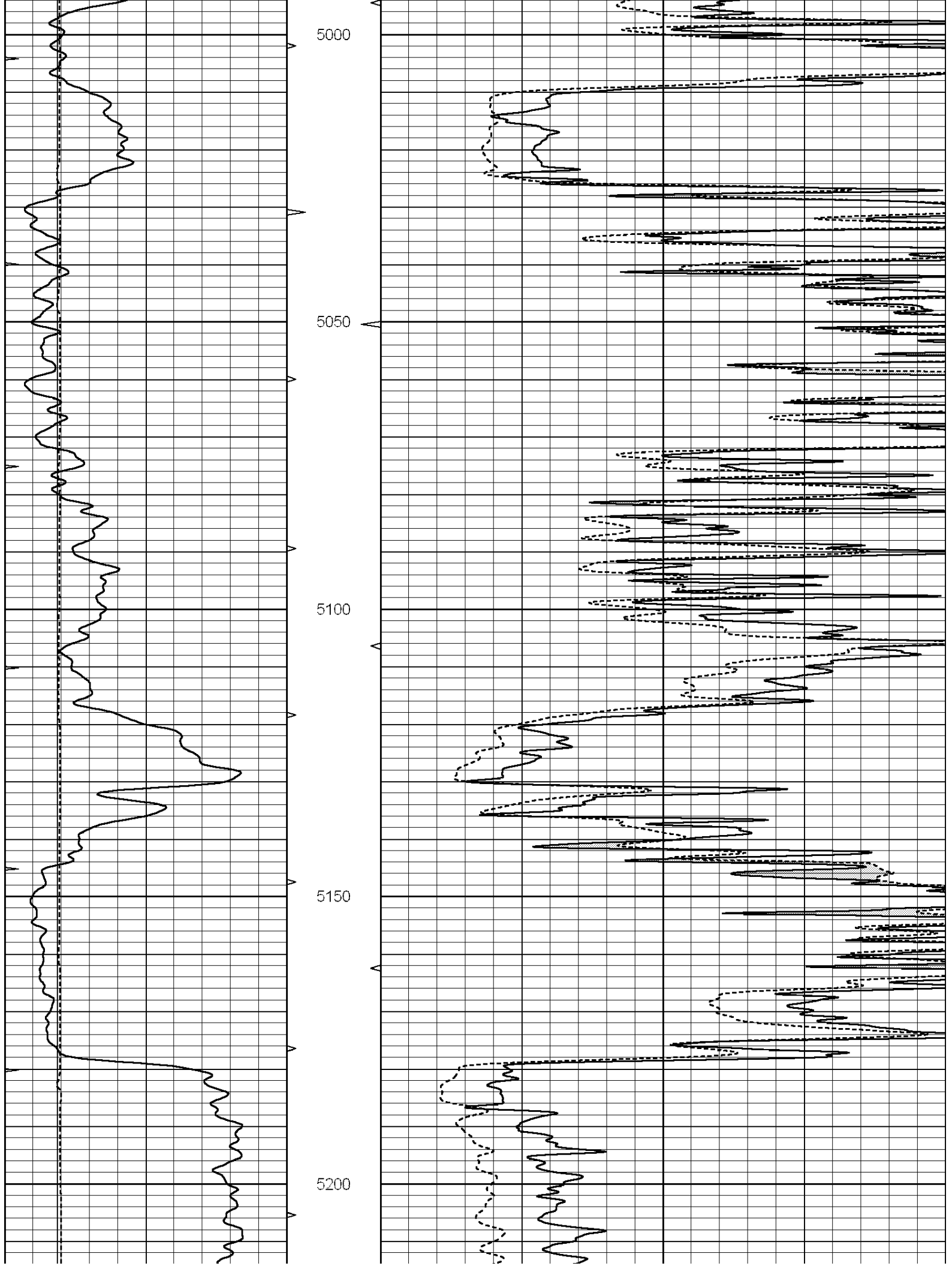
4650

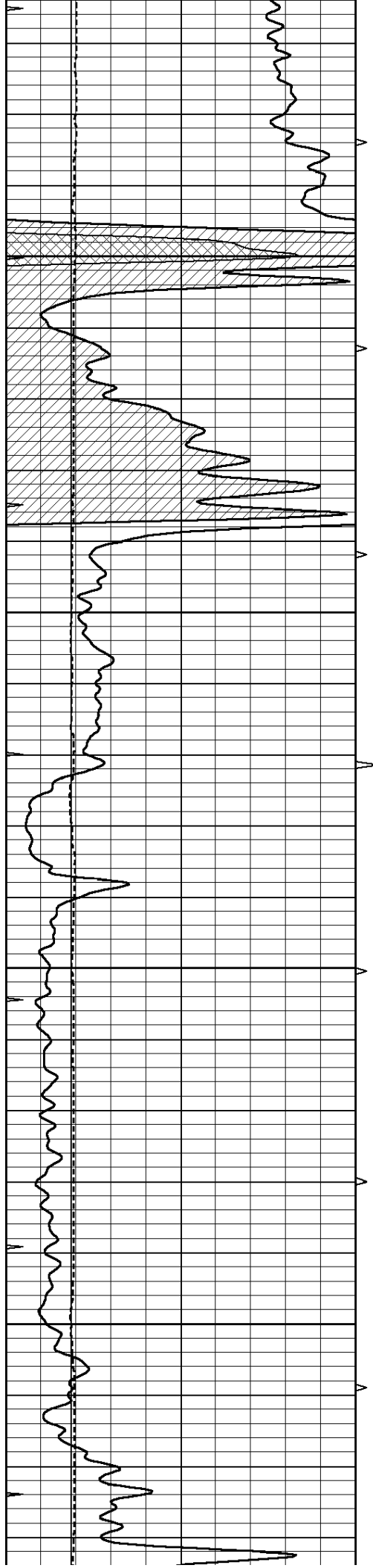
4700

4750







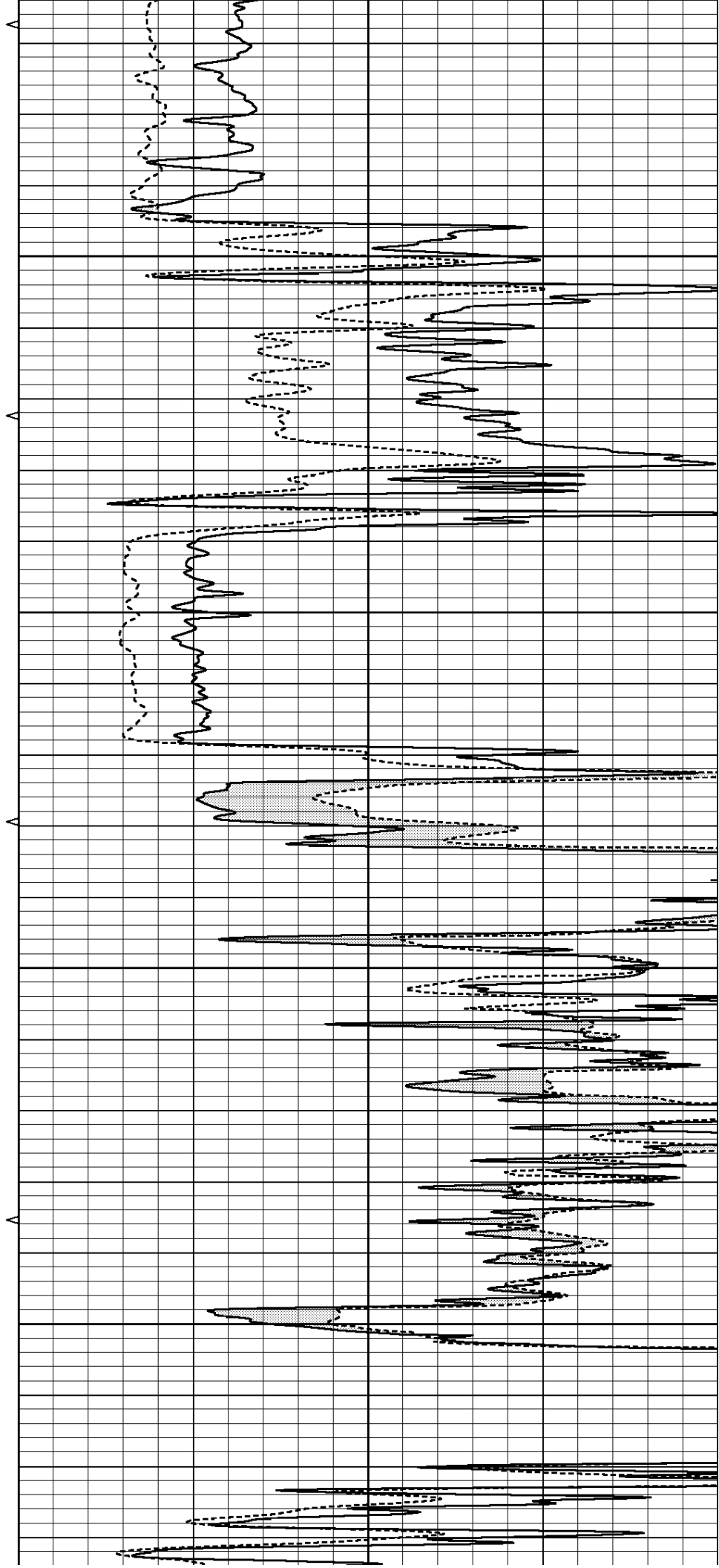


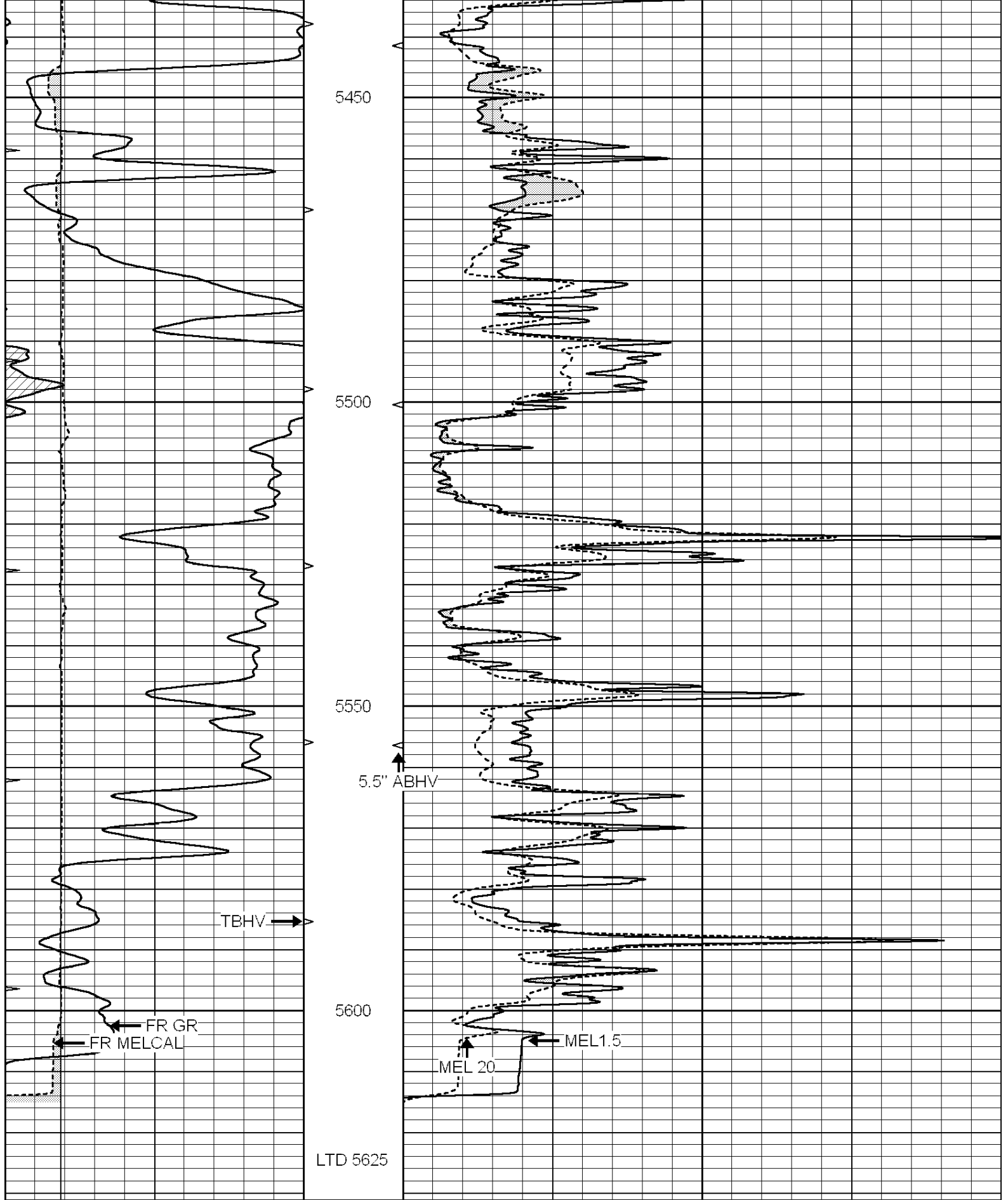
5250

5300

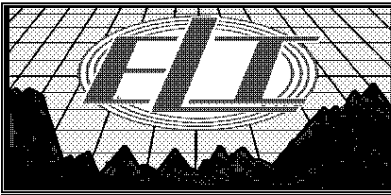
5350

5400





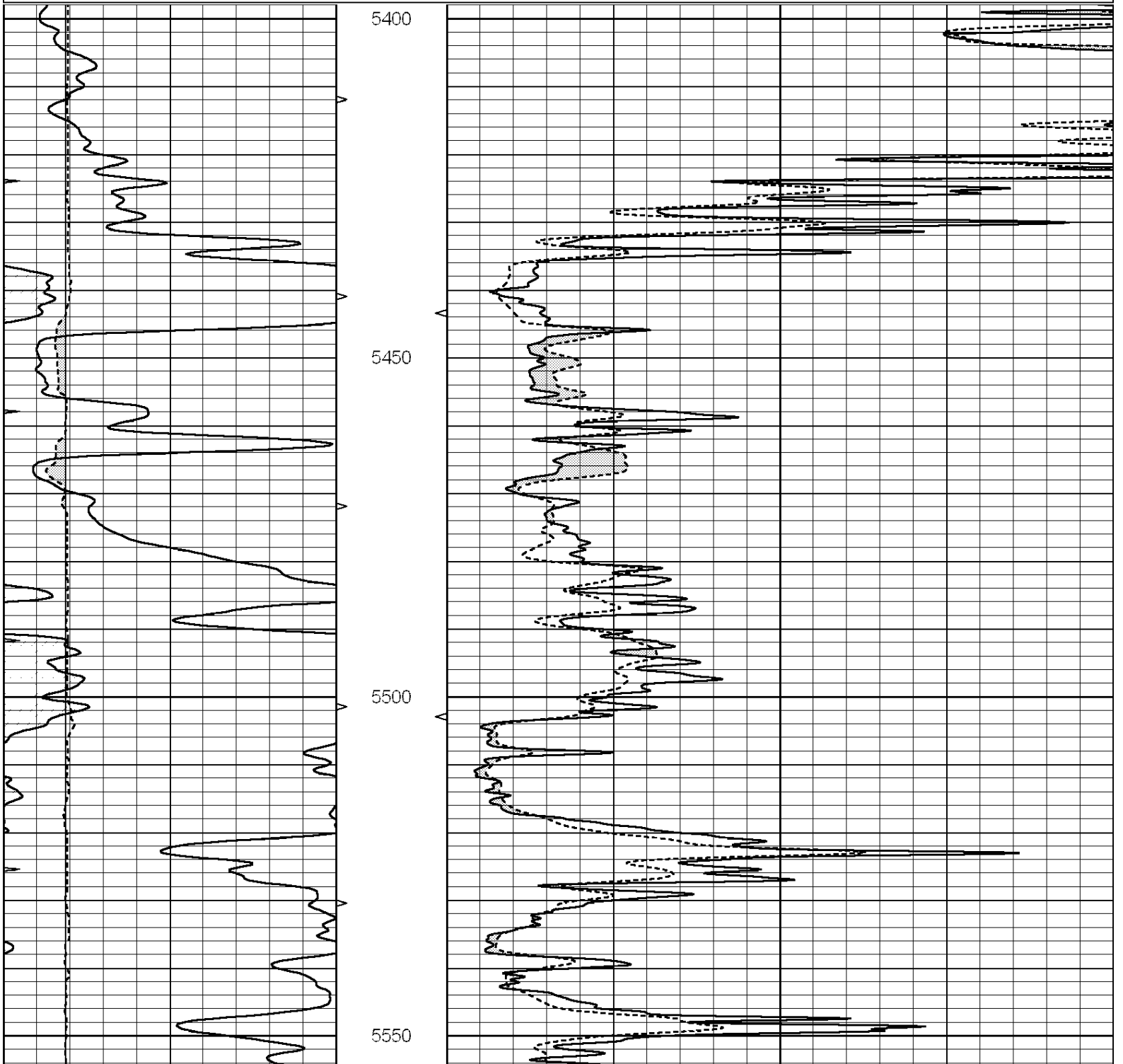
0	GAMMA RAY (GAPI)	150	ABHV	0	MEL1.5 (Ohm-m)	40
6	CALIPER (in)	16	10 (ft3)	0 0	MEL 20 (Ohm-m)	40
0	MINMK	20	TBHV			
			0 (ft3)	10		

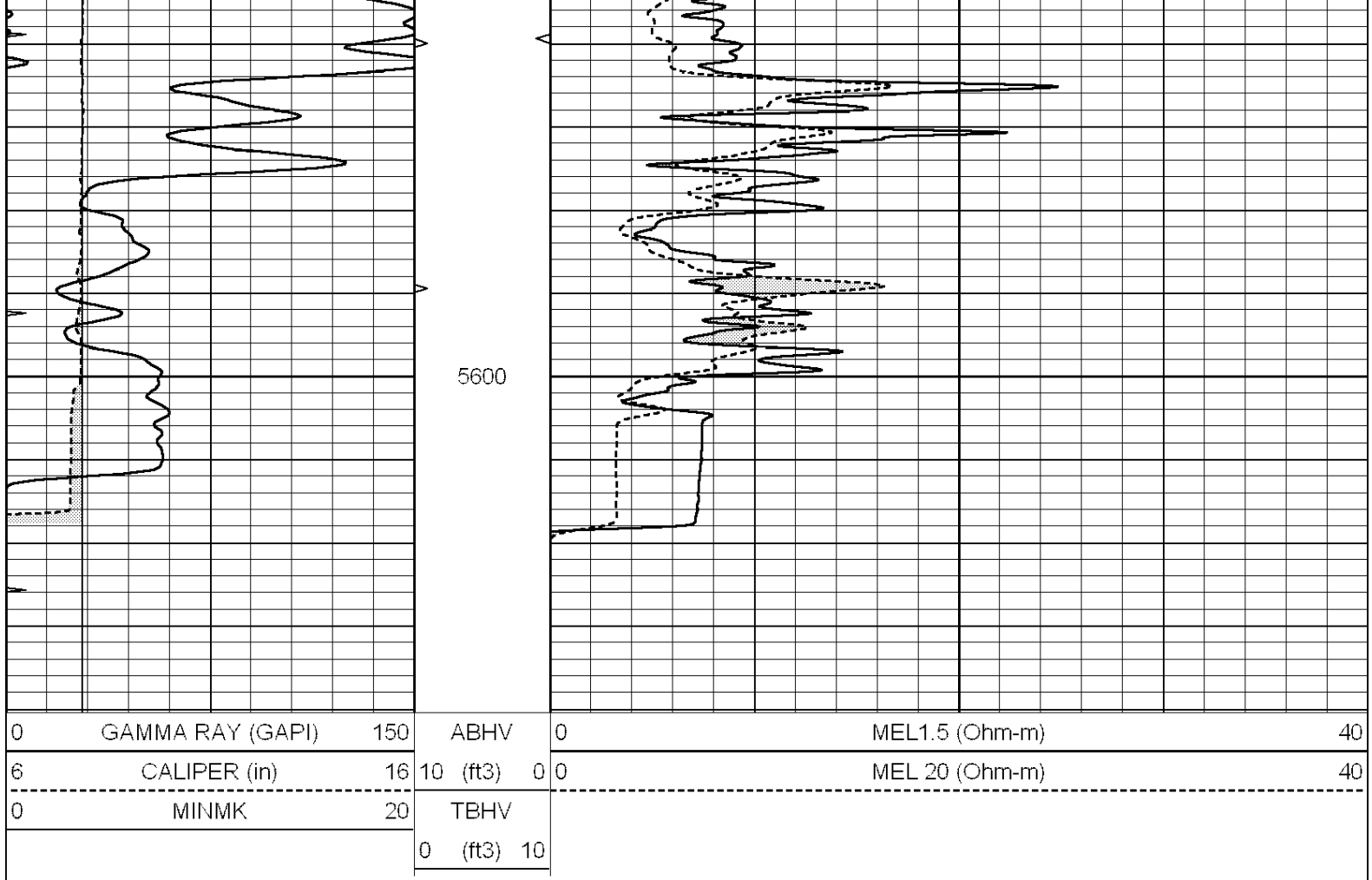


REPEAT SECTION

Database File: 3608pe.db
 Dataset Pathname: pass8.6
 Presentation Format: micro
 Dataset Creation: Fri Apr 05 00:41:32 2019
 Charted by: Depth in Feet scaled 1:240

0	GAMMA RAY (GAPI)	150	ABHV	0	MEL1.5 (Ohm-m)	40
6	CALIPER (in)	16	10 (ft3)	0	MEL 20 (Ohm-m)	40
0	MINMK	20	TBHV			
			0 (ft3)	10		





Calibration Report

Database File: 3608pe.db
 Dataset Pathname: pass9.2
 Dataset Creation: Fri Apr 05 01:14:34 2019

MICRO Calibration Report

Serial Number: 070912
 Tool Model: ProbeN
 Performed: Sun Mar 31 03:39:54 2019

Caliper Calibration: Gain=4.134 Offset=-0.768

References	Low Cal	High Cal
Readings	7.500	18.000
	2.000	4.540

1.5" Calibration: Gain=40.000 Offset=-0.600

References	Low Cal	High Cal
Readings	0.000	20.000
	0.002	1.239

2" Calibration: Gain=46.000 Offset=0.000

References	Low Cal	High Cal
Readings	0.000	20.000
	0.003	1.075

Gamma Ray Calibration Report

Serial Number: 110959
 Tool Model: OPEN_GR
 Performed: Fri Apr 05 00:52:20 2019

Calibrator Value:	1.0	GAPI
Background Reading:	0.0	cps
Calibrator Reading:	1.0	cps
Sensitivity:	0.2400	GAPI/cps