



# FRAC - FINDER LOG

Company LOTUS OPERATING COMPANY, LLC.  
 Well #3 GOOD  
 Field HARDTNER  
 County BARBER  
 State KANSAS

Company LOTUS OPERATING COMPANY, LLC.  
 Well #3 GOOD  
 Field HARDTNER  
 County BARBER State KANSAS

Location: API # : 15-007-24348-0000  
 1100' FSL & 1230' FWL  
 NE - NE - SW - SW  
 SEC 36 TWP 34S RGE 13W  
 Permanent Datum GROUND LEVEL Elevation 1451  
 Log Measured From KELLY BUSHING 13' A.G.L.  
 Drilling Measured From KELLY BUSHING  
 Other Services  
 CDL/CNL/PE  
 DIL/MEU/SON  
 Elevation  
 K.B. 1464  
 D.F. 1462  
 G.L. 1451

Date	4/4/19
Run Number	THREE
Depth Driller	5625
Depth Logger	5625
Bottom Logged Interval	5617
Top Log Interval	3500
Casing Driller	8 5/8" @ 268'
Casing Logger	268
Bit Size	7 7/8"
Type Fluid in Hole	CHEMICAL MUD
Density / Viscosity	9.4/49
pH / Fluid Loss	11.0/8.8
Source of Sample	FLOWLINE
Rim @ Meas. Temp	.600 @ .95F
Rmf @ Meas. Temp	.450 @ .95F
Rmc @ Meas. Temp	.720 @ .95F
Source of Rmf / Rmc	MEASUREMENT
Rim @ BHT	.435 @ 131F
Time Circulation Stopped	6 HOURS
Time Logger on Bottom	11:45 P.M.
Maximum Recorded Temperature	131F
Equipment Number	922339
Location	HAYS, KANSAS
Recorded By	JEFF LUEBBERS
Witnessed By	TIM HELLMAN

<<< Fold Here >>>

All interpretations are opinions based on inferences from electrical or other measurements and we cannot and do not guarantee the accuracy or correctness of any interpretation, and we shall not, except in the case of gross or willful negligence on our part, be liable or responsible for any loss, costs, damages, or expenses incurred or sustained by anyone resulting from any interpretation made by any of our officers, agents or employees. These interpretations are also subject to our general terms and conditions set out in our current Price Schedule.

### Comments

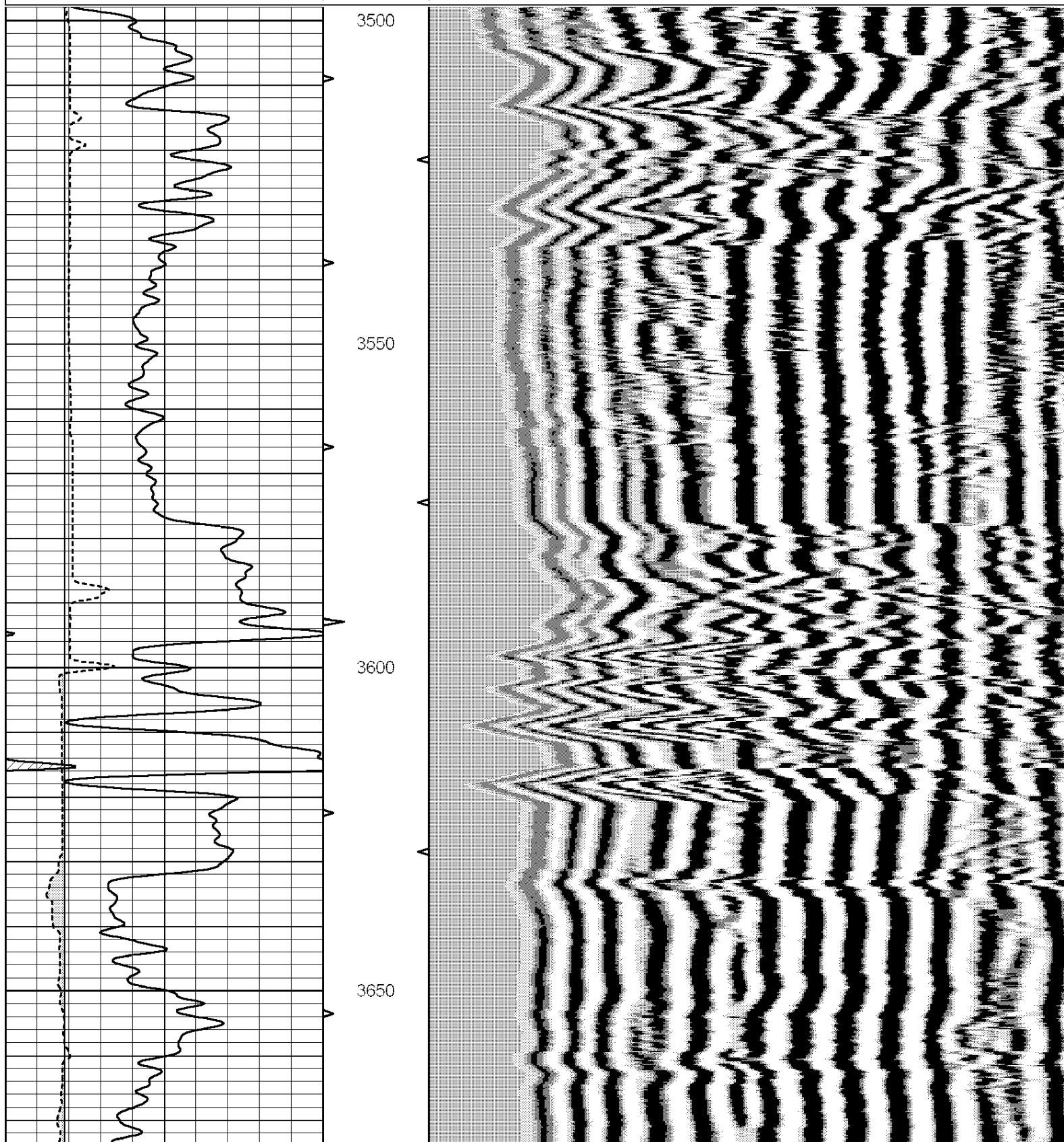
THANK YOU FOR USING ELI WIRELINE HAYS, KANSAS (785) 628-6395  
 DIRECTIONS  
 HARDTNER, KS., (FLASHING LIGHT) 2 W. TO "GYP HILL RD.", 1 1/4N., E. INTO JUST PAST BRIDGE

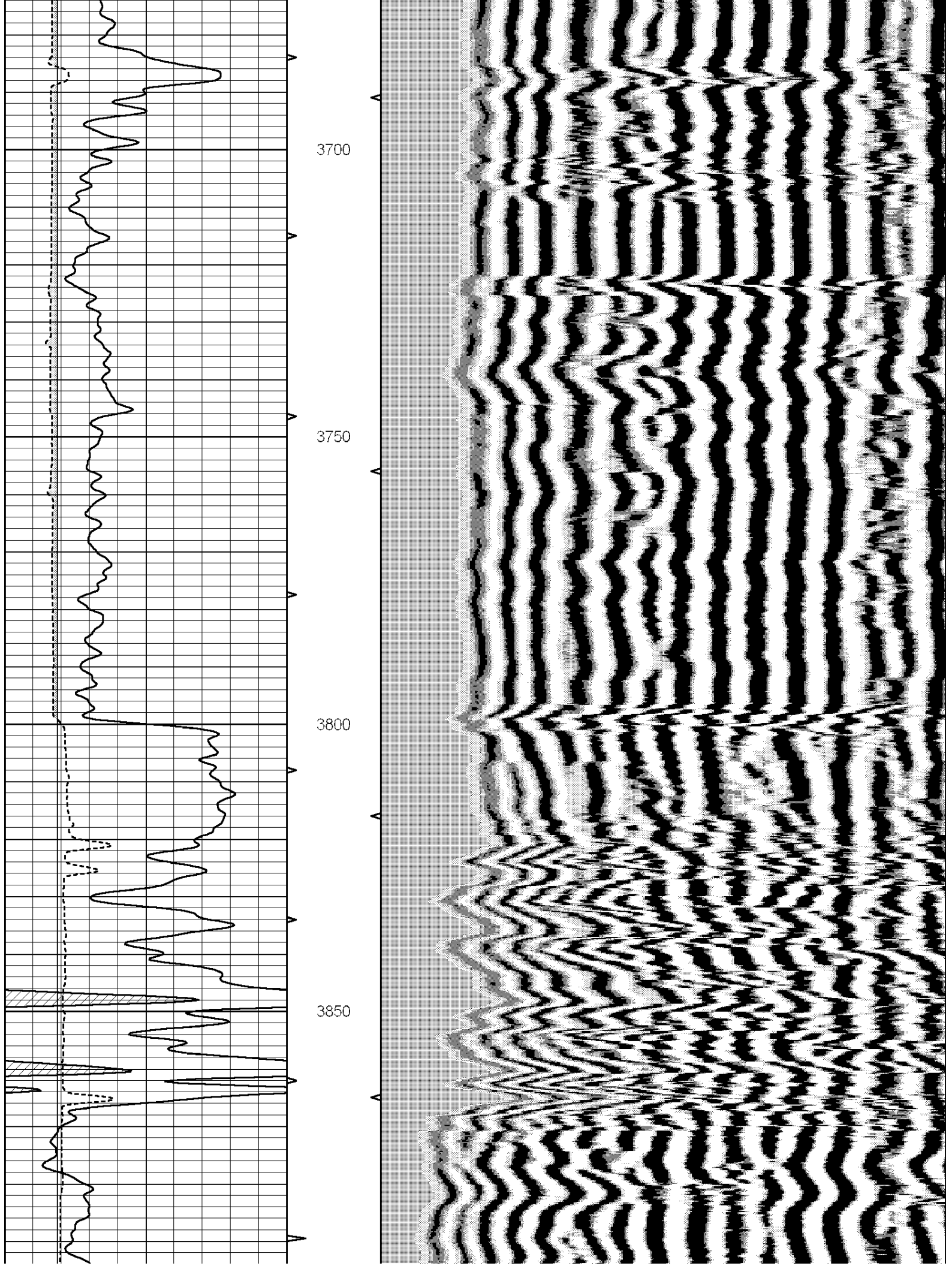


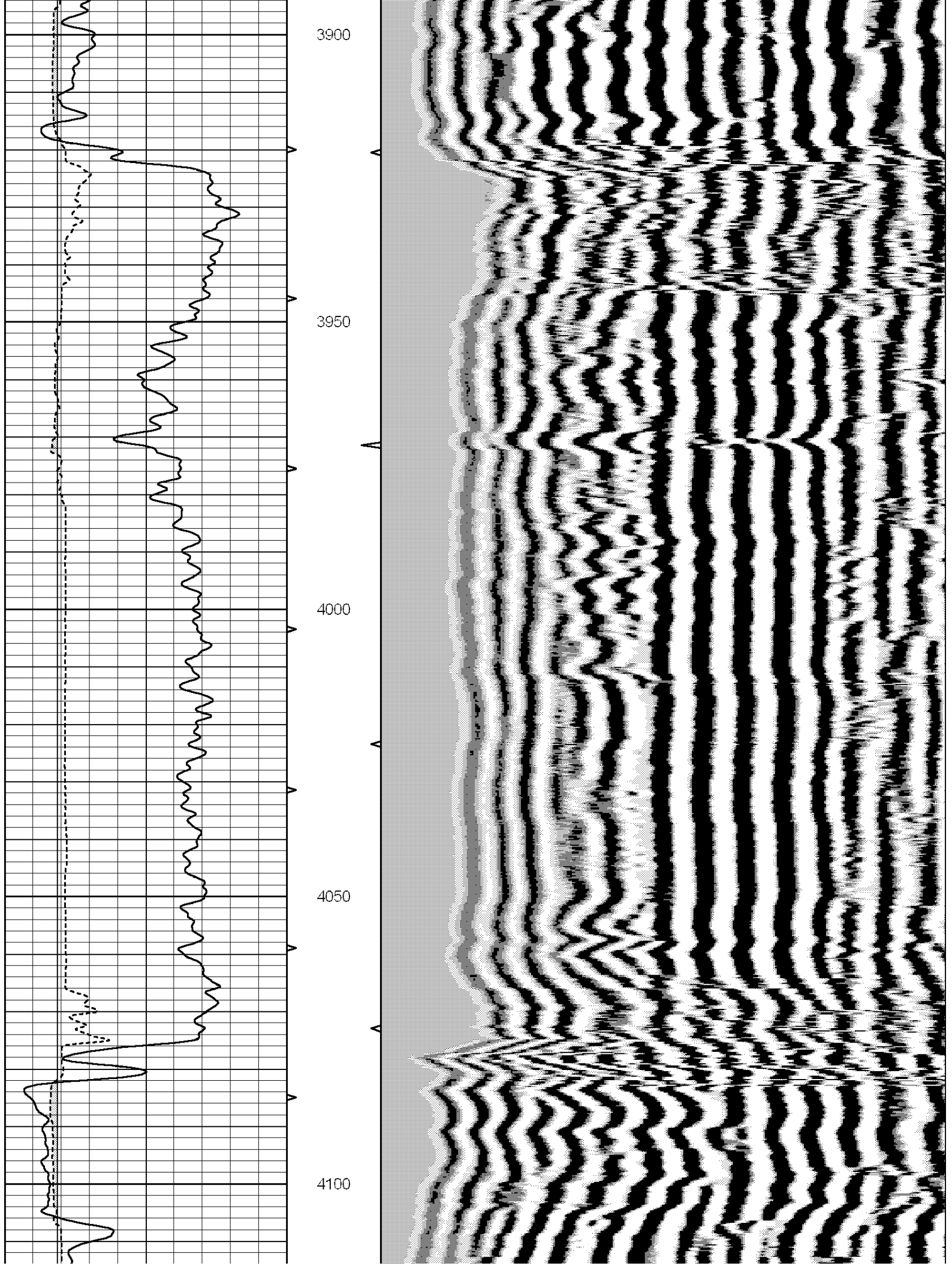
# MAIN SECTION

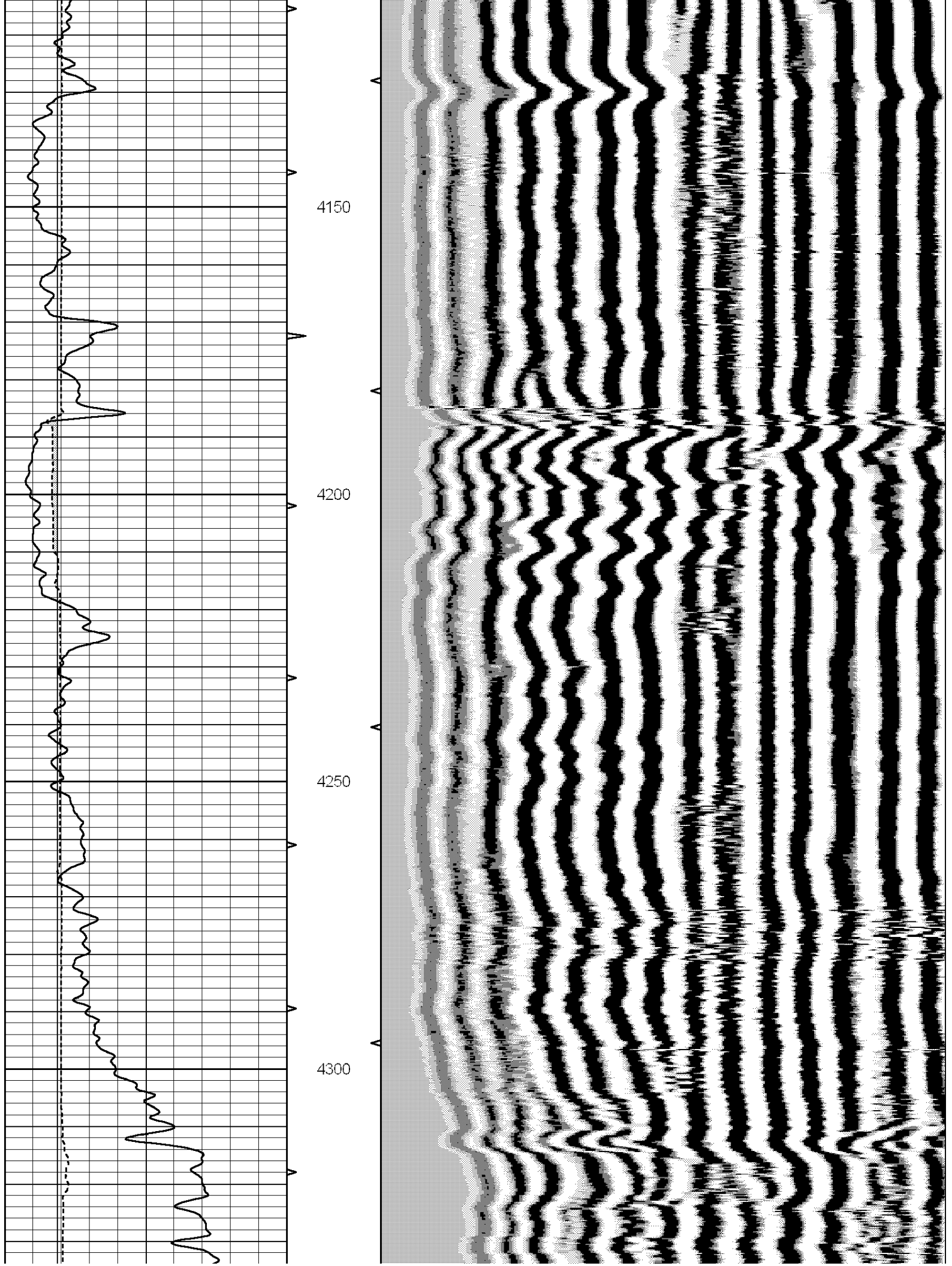
Database File: 3608pe.db  
 Dataset Pathname: pass9.2  
 Presentation Format: frac  
 Dataset Creation: Fri Apr 05 01:14:34 2019  
 Charted by: Depth in Feet scaled 1:240

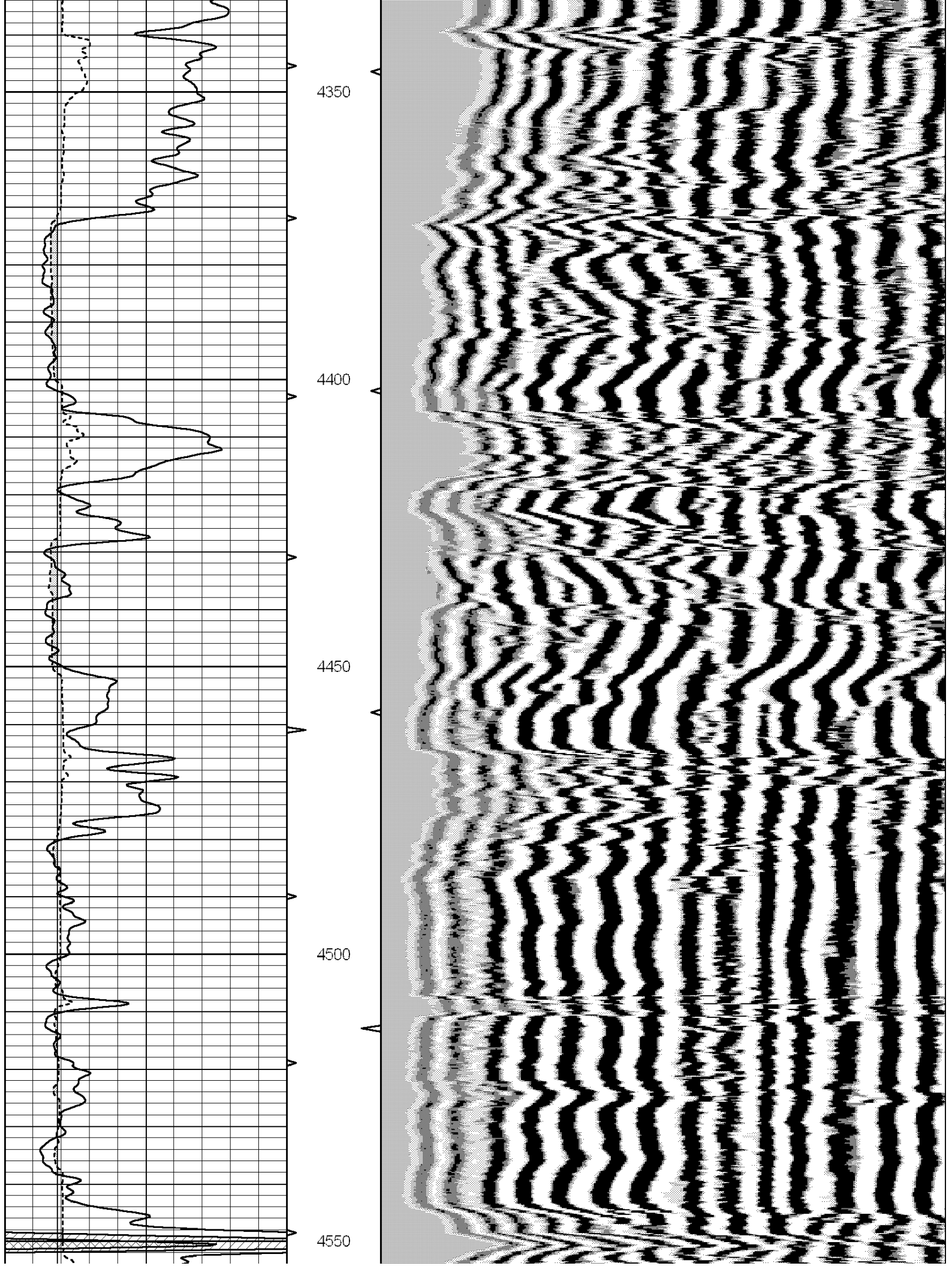
0	GR (GAPI)	150	ABHV	200	WWF1	1200
6	BOREID (in)	16	10 (ft3)	0		
6	CALIPER (in)	16	TBHV			
-----			0 (ft3)	10		

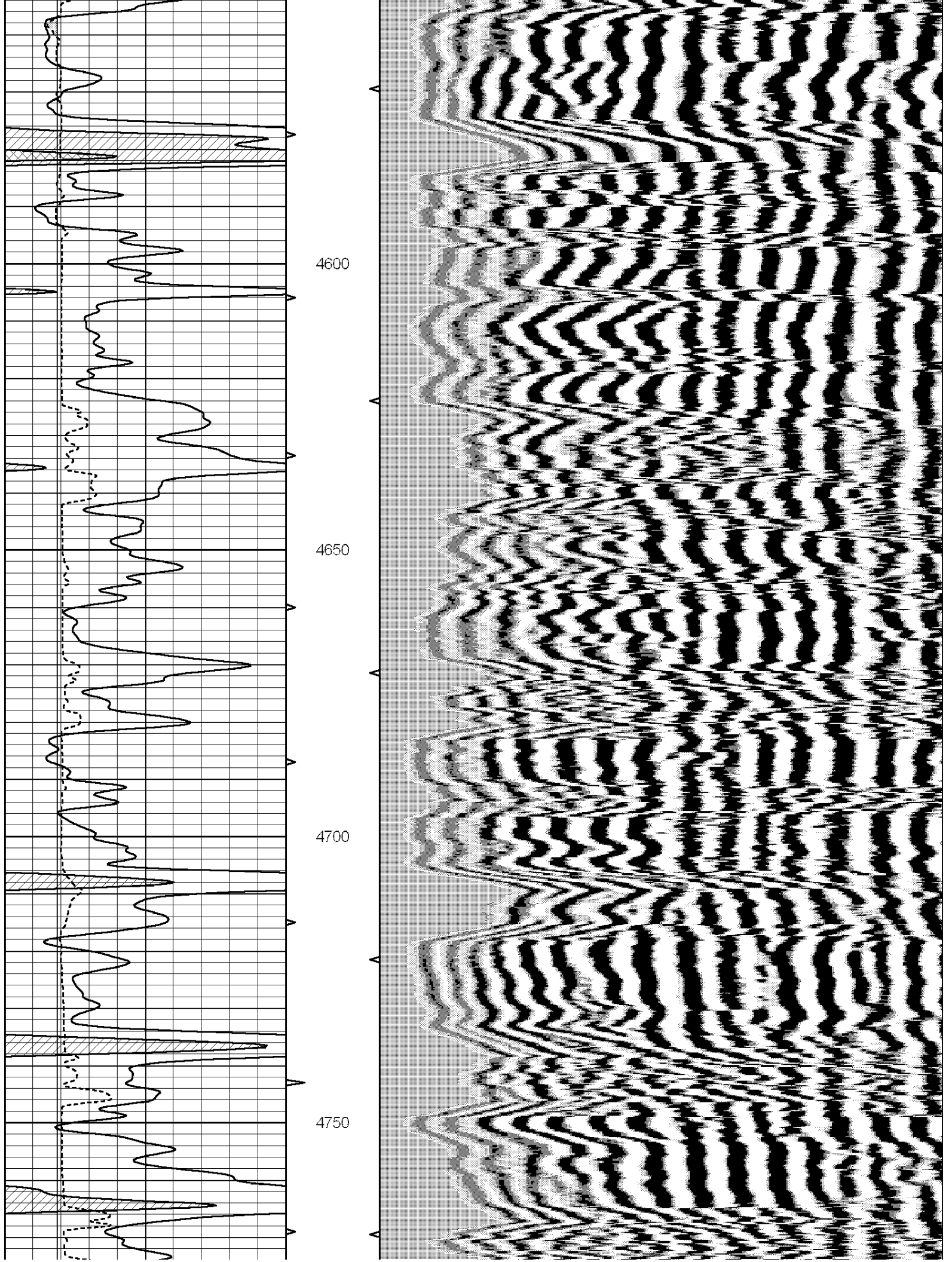


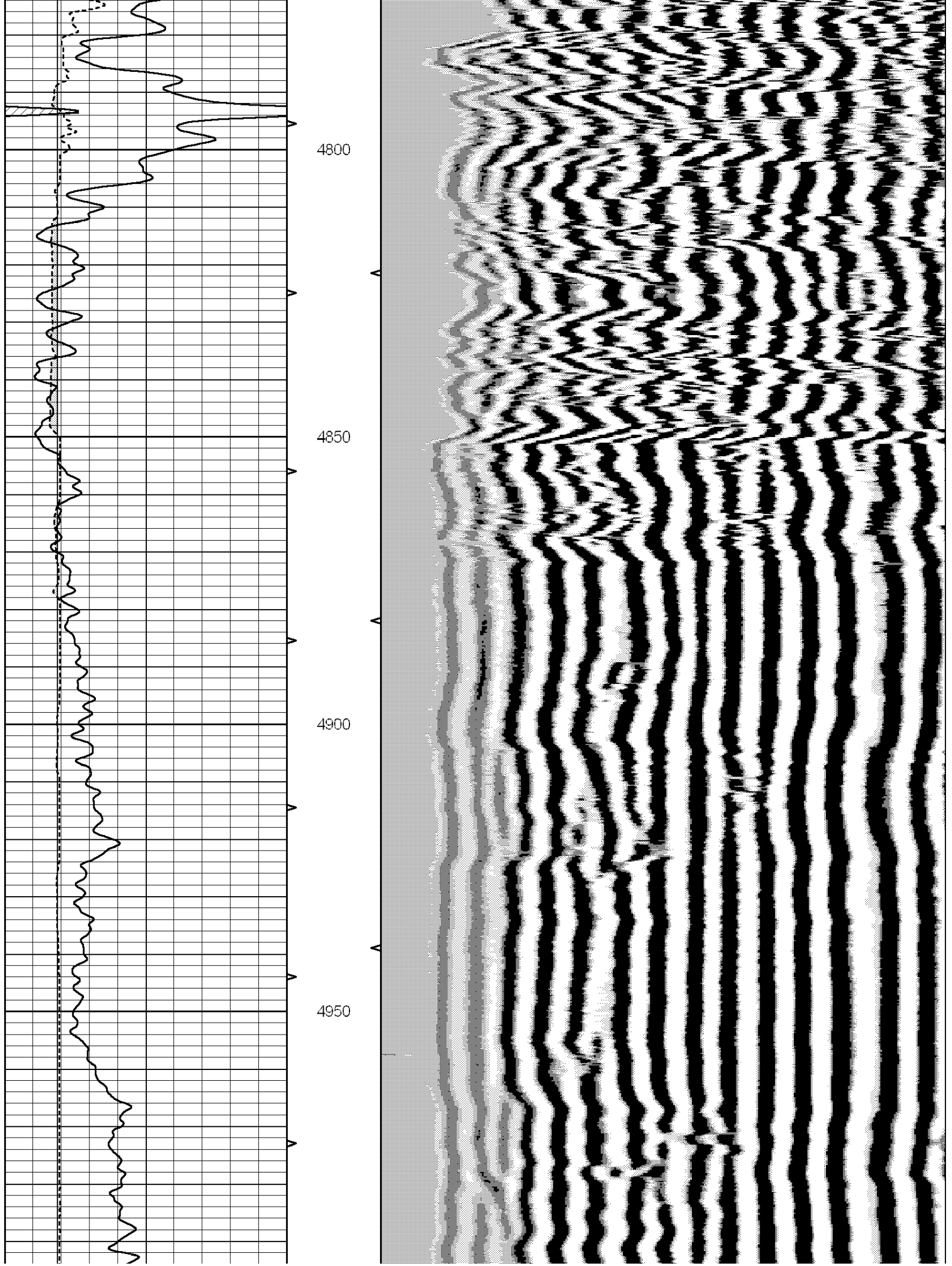


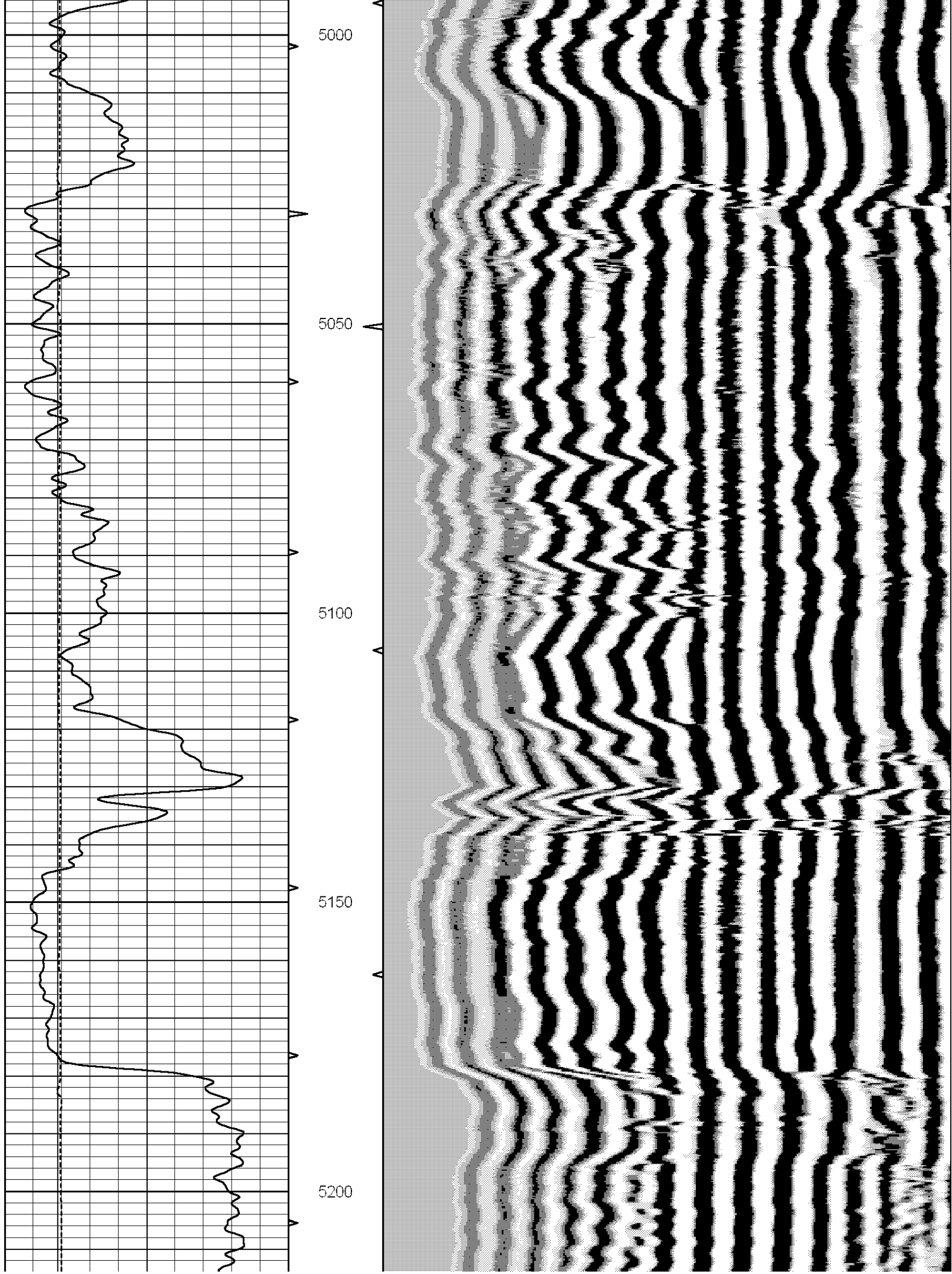


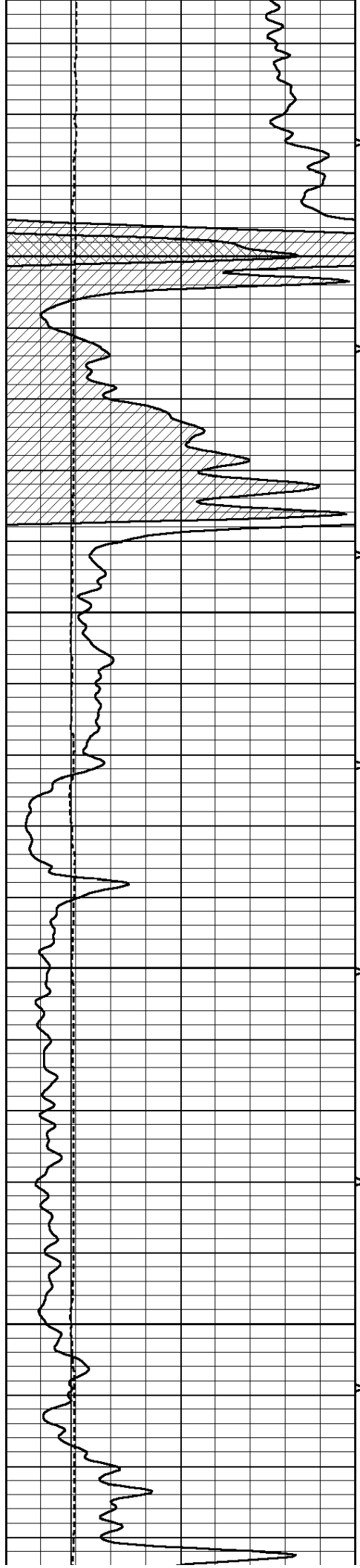










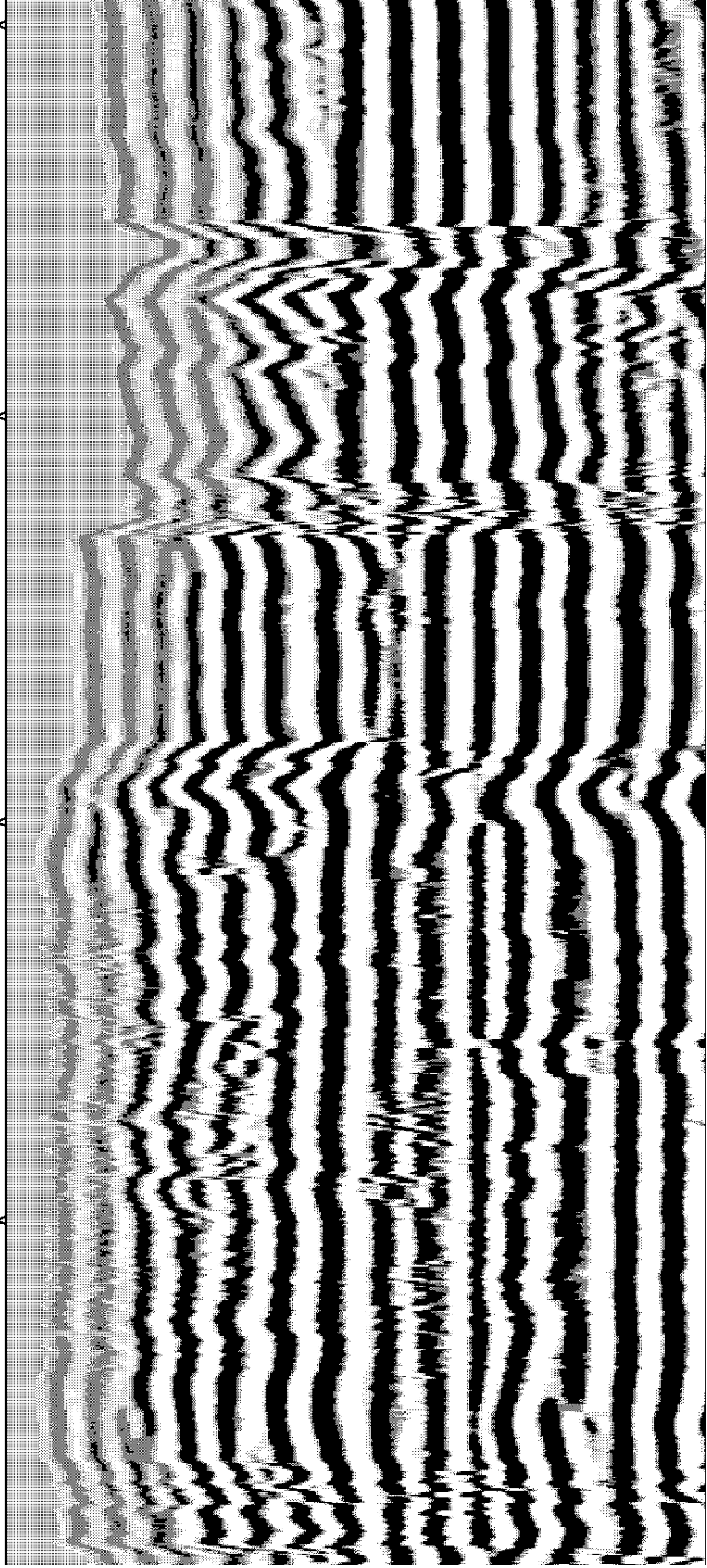


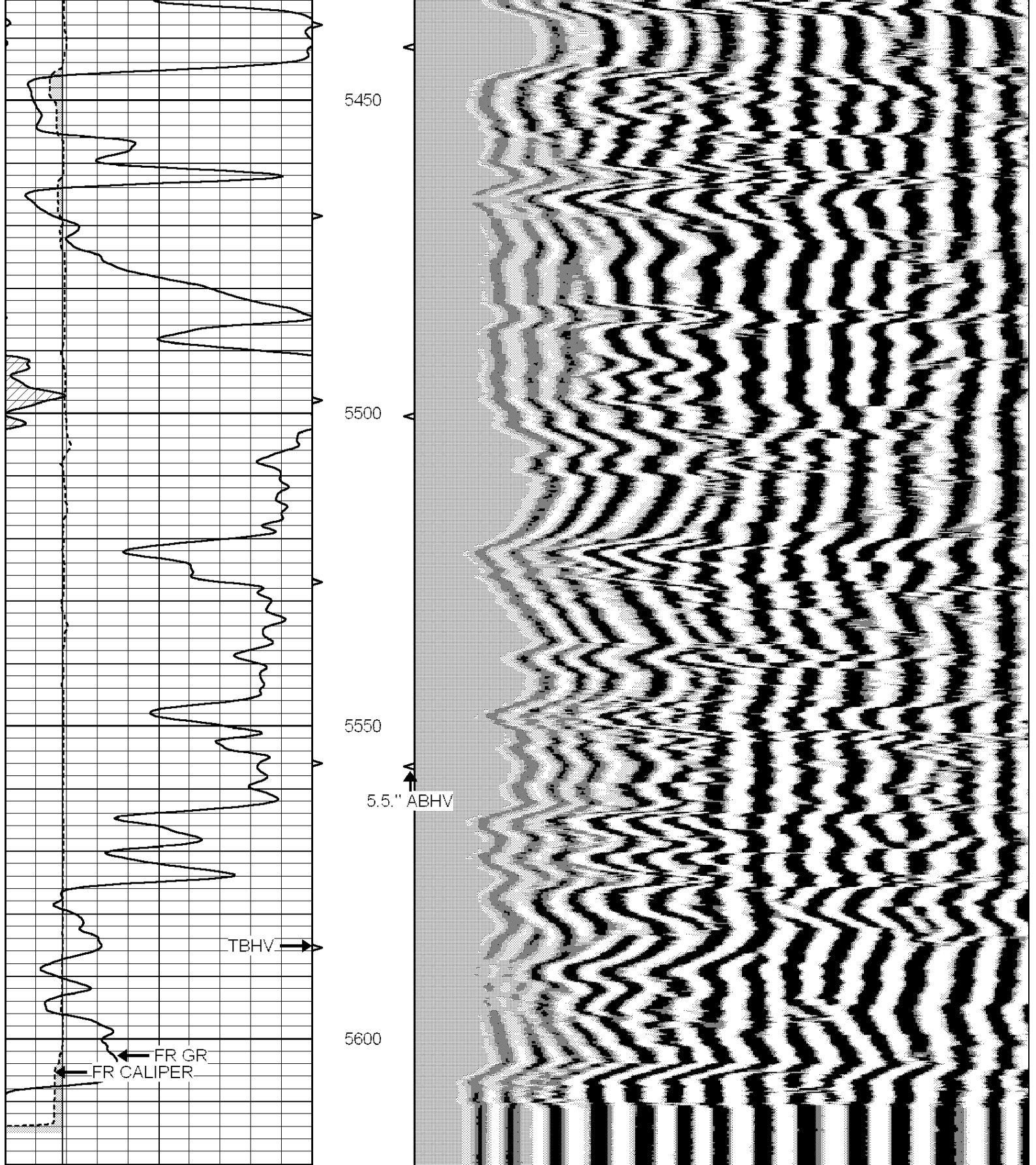
5250

5300

5350

5400





LTD 5625

0	GR (GAPI)	150	ABHV	200	WV1	1200
6	BOREID (in)	16	10 (ft3)	0		
6	CALIPER (in)	16	TBHV			
			0 (ft3)	10		