



# SONIC LOG

Company LOTUS OPERATING COMPANY, LLC.  
 Well #3 GOOD  
 Field HARDTNER  
 County BARBER  
 State KANSAS

Company LOTUS OPERATING COMPANY, LLC.  
 Well #3 GOOD  
 Field HARDTNER  
 County BARBER State KANSAS

Location: API # : 15-007-24348-0000  
 1100' FSL & 1230' FVL  
 NE - NE - SW - SW  
 SEC 36 TWP 34S RGE 13W  
 Permanent Datum GROUND LEVEL Elevation 1451  
 Log Measured From KELLY BUSHING 13' A.G.L.  
 Drilling Measured From KELLY BUSHING  
 Other Services  
 CDL/CNL/PE  
 DIL/MEL/FF  
 Elevation  
 K.B. 1464  
 D.F. 1462  
 G.L. 1451

Date	4/4/19		
Run Number	THREE		
Depth Driller	5625		
Depth Logger	5625		
Bottom Logged Interval	5617		
Top Log Interval	3500		
Casing Driller	8 5/8" @ 268'		
Casing Logger	268		
Bit Size	7 7/8"		
Type Fluid in Hole	CHEMICAL MUD	CHLORIDES 4,000 PPM	
Density / Viscosity	9.4/49		
pH / Fluid Loss	11.0/8.8		
Source of Sample	FLOWLINE		
Rin @ Meas. Temp	.600 @ .95F		
Rmf @ Meas. Temp	.450 @ .95F		
Rmc @ Meas. Temp	.720 @ .95F		
Source of Rmf / Rmc	MEASUREMENT		
Rin @ BHT	.435 @ 131F		
Time Circulation Stopped	6 HOURS		
Time Logger on Bottom	11:45 P.M.		
Maximum Recorded Temperature	131F		
Equipment Number	922339		
Location	HAYS, KANSAS		
Recorded By	JEFF LUEBBERS		
Witnessed By	TIM HELLMAN		

<<< Fold Here >>>

All interpretations are opinions based on inferences from electrical or other measurements and we cannot and do not guarantee the accuracy or correctness of any interpretation, and we shall not, except in the case of gross or willful negligence on our part, be liable or responsible for any loss, costs, damages, or expenses incurred or sustained by anyone resulting from any interpretation made by any of our officers, agents or employees. These interpretations are also subject to our general terms and conditions set out in our current Price Schedule.

### Comments

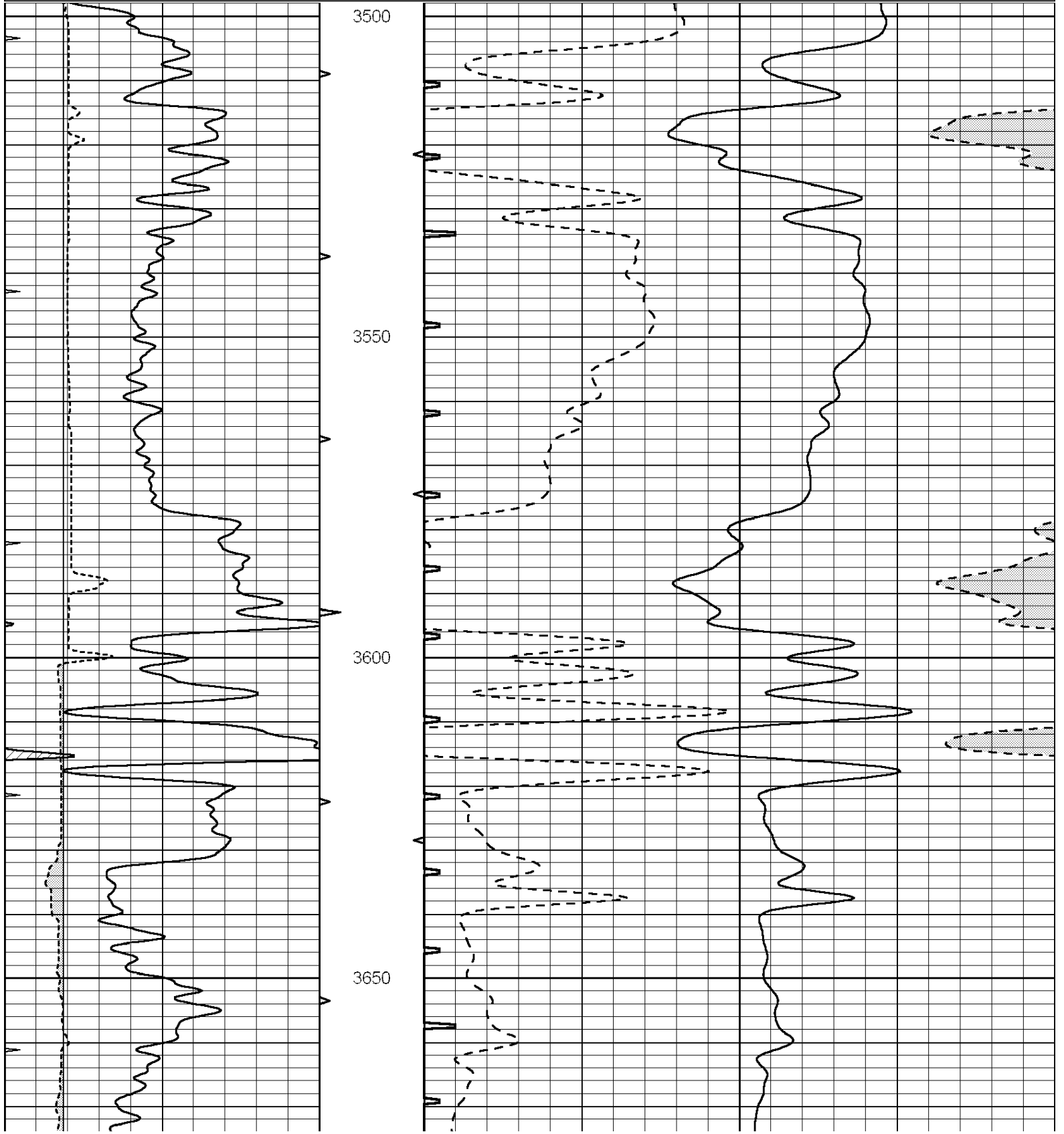
THANK YOU FOR USING ELI WIRELINE HAYS, KANSAS (785) 628-6395  
 DIRECTIONS  
 HARDTNER, KS., (FLASHING LIGHT) 2 W. TO "GYP HILL RD.", 1 1/4N., E. INTO JUST PAST BRIDGE

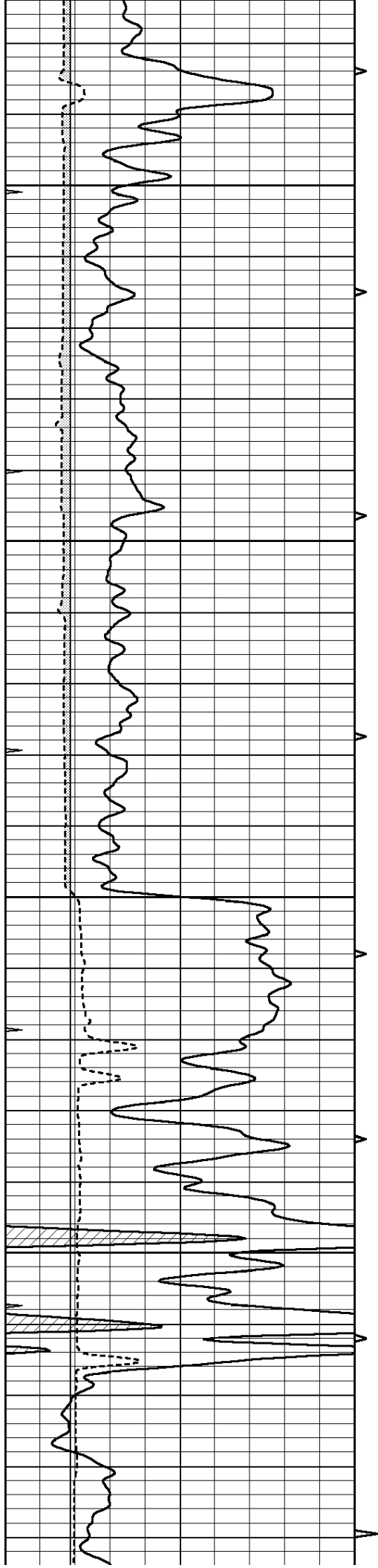


# MAIN SECTION

Database File: 3608pe.db  
 Dataset Pathname: pass9.5  
 Presentation Format: slt  
 Dataset Creation: Fri Apr 05 01:52:23 2019  
 Charted by: Depth in Feet scaled 1:240

0	GAMMA RAY (GAPI)	150	ABHV	140	DELTA TIME (usec/ft)	40
6	CALIPER (in)	16	10 (ft3)	0	30	SONIC POROSITY (pu)
0	MINMK	20	TBHV	0	ITT (msec)	20
			0 (ft3)	10		



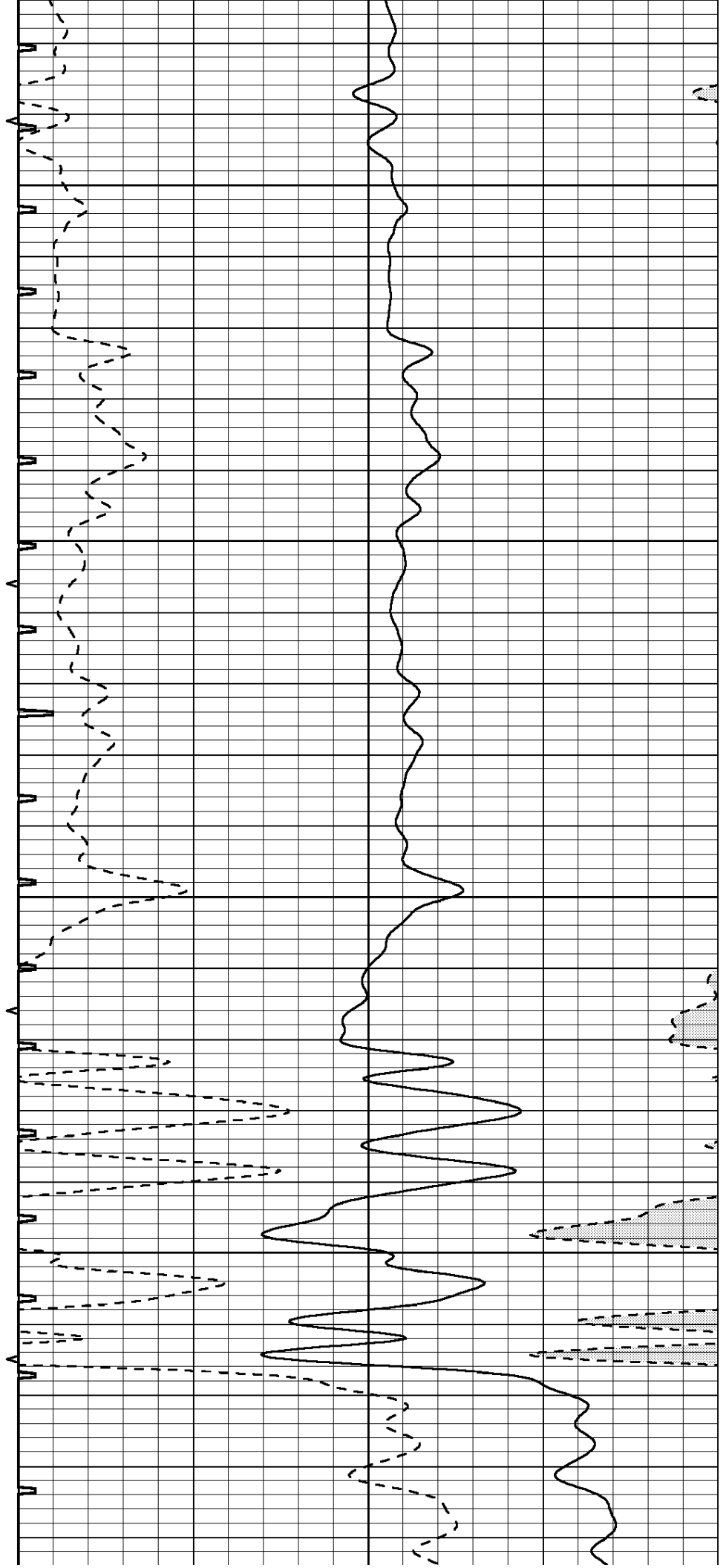


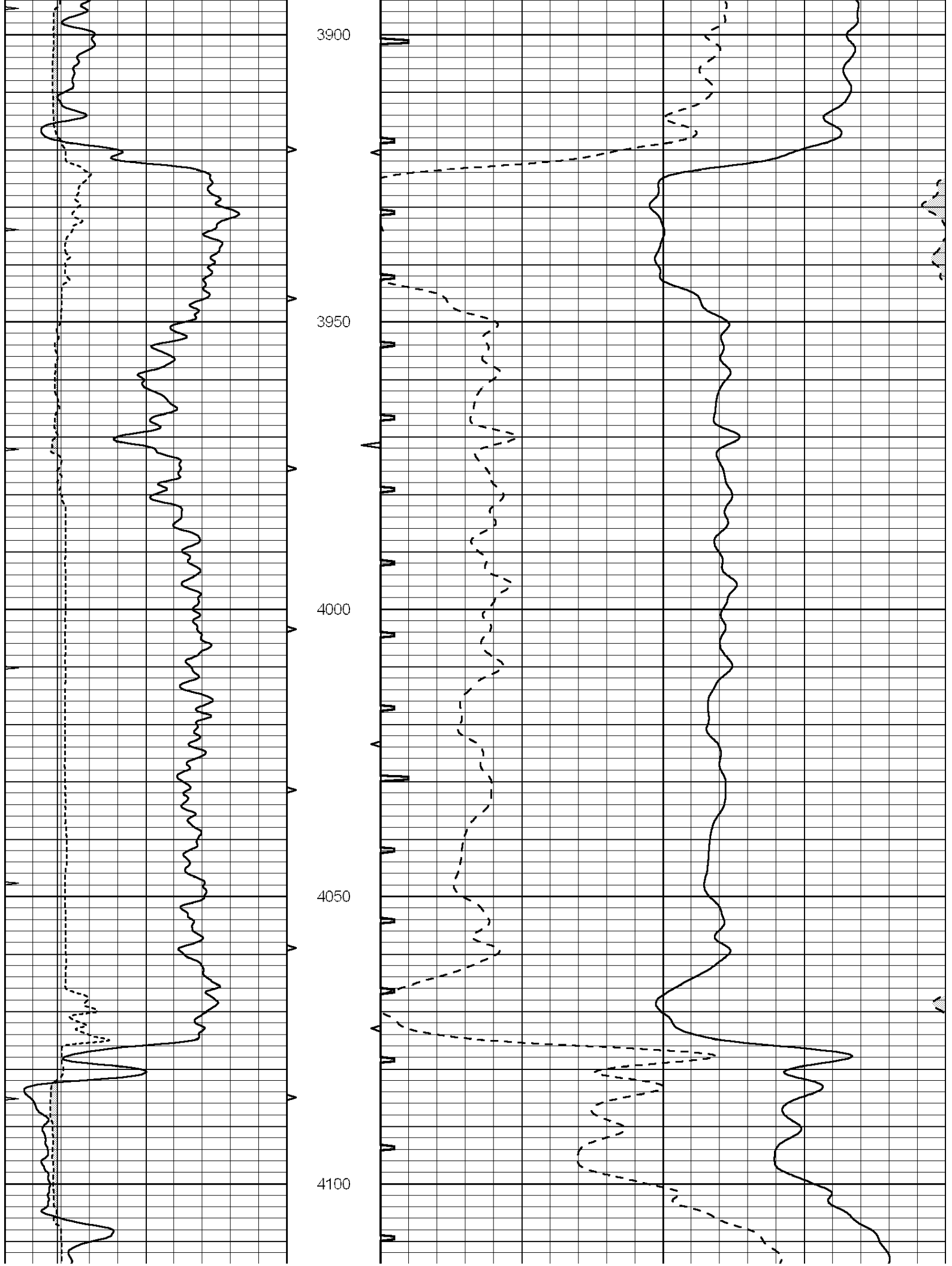
3700

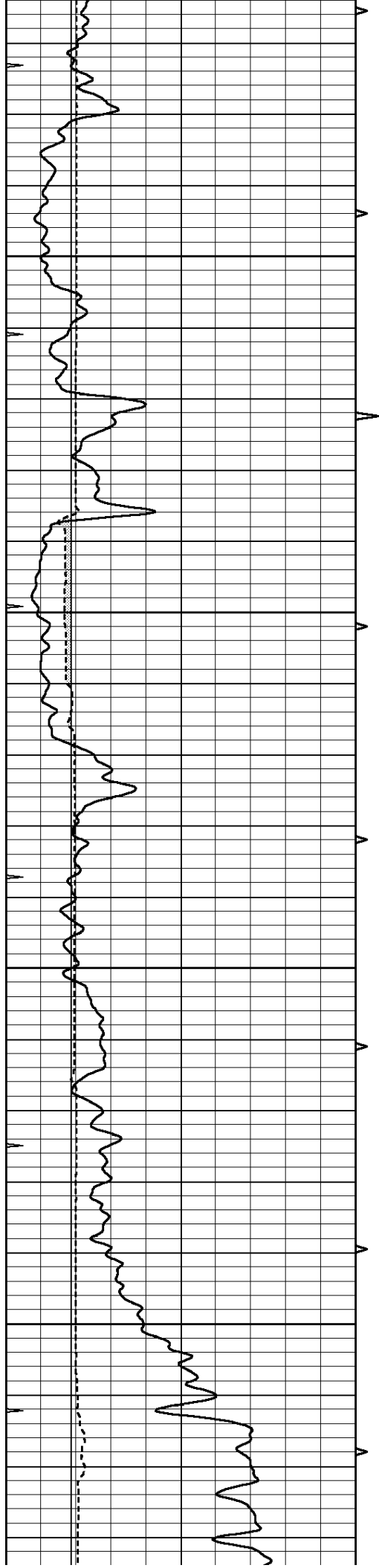
3750

3800

3850





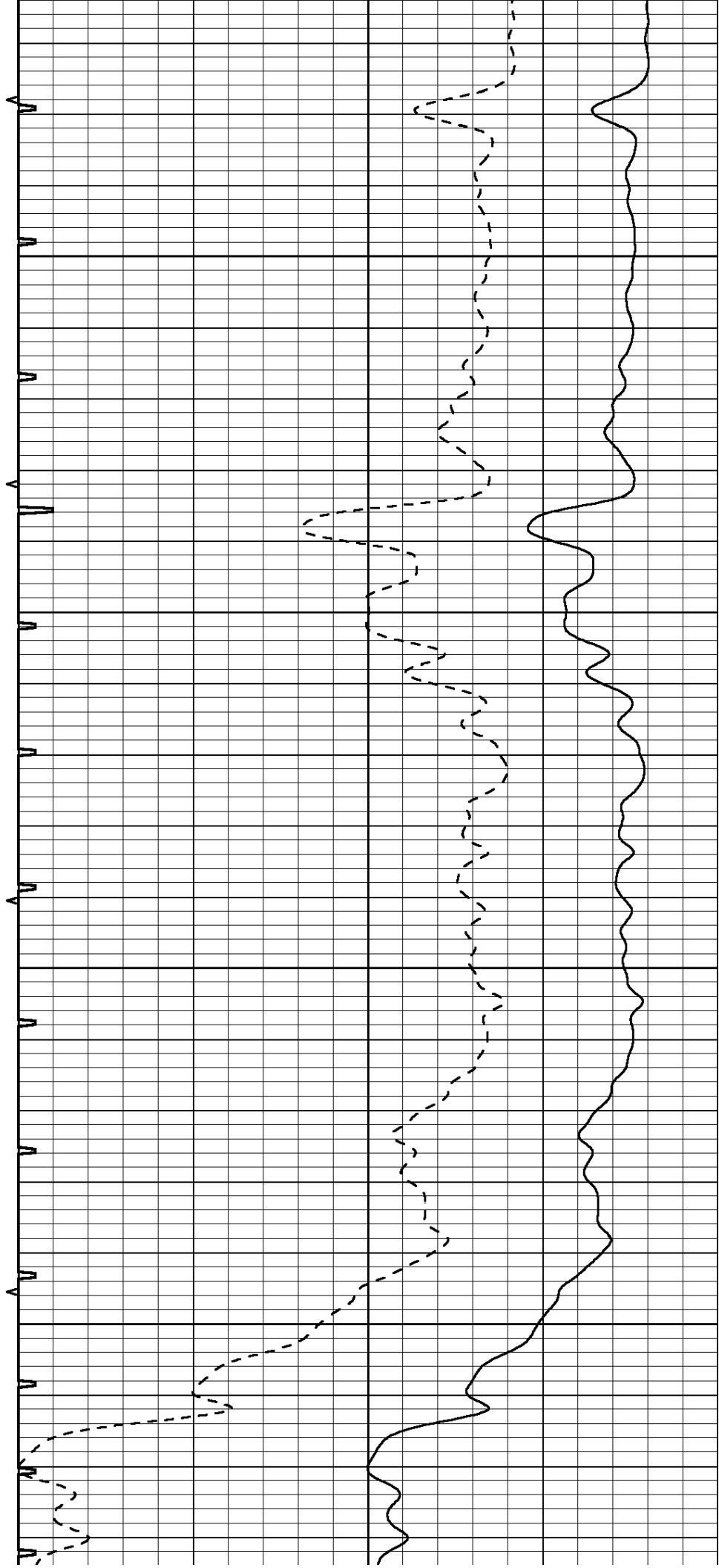


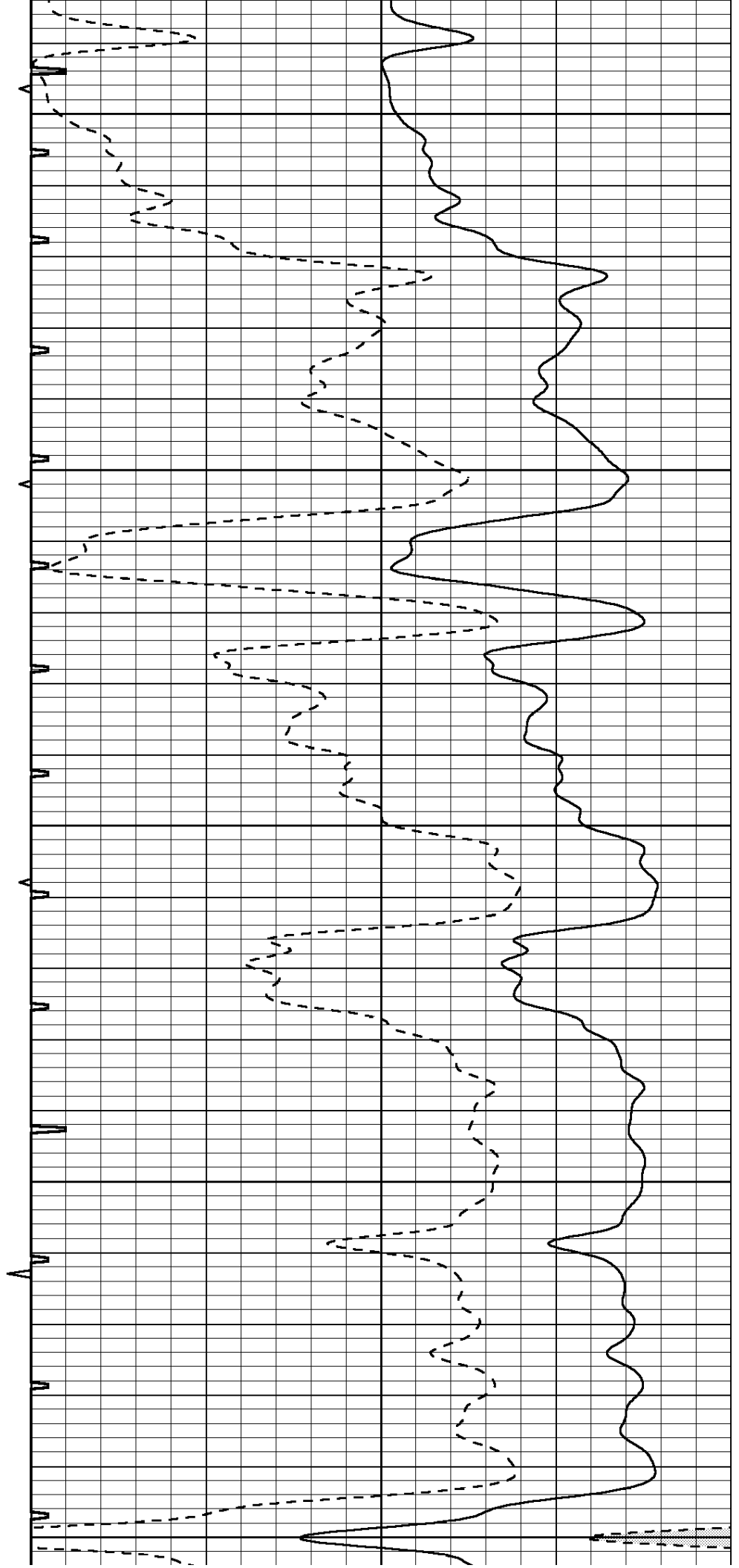
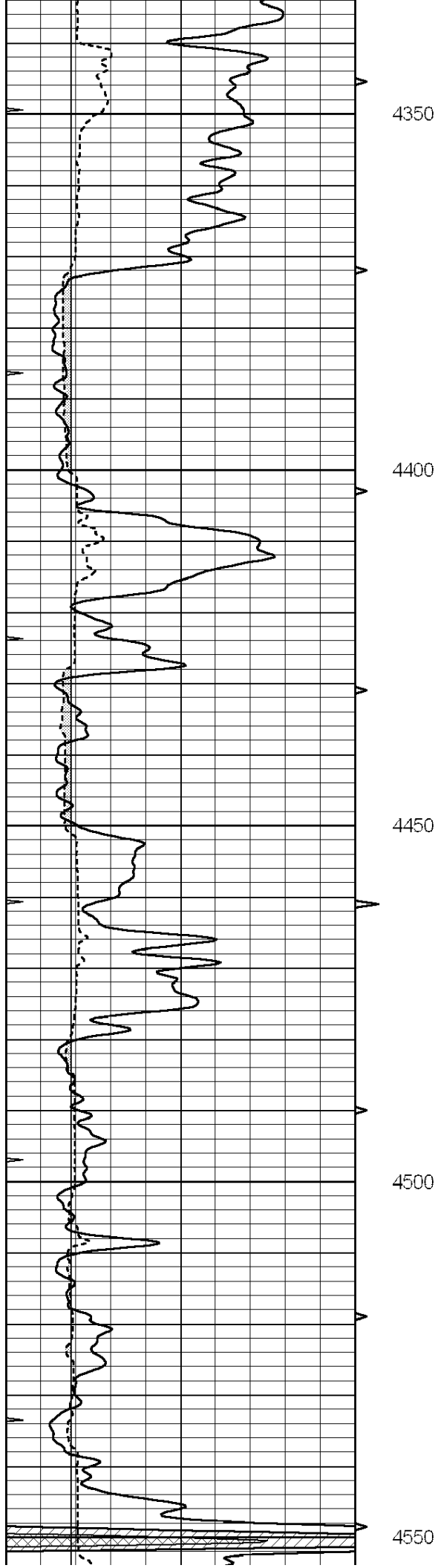
4150

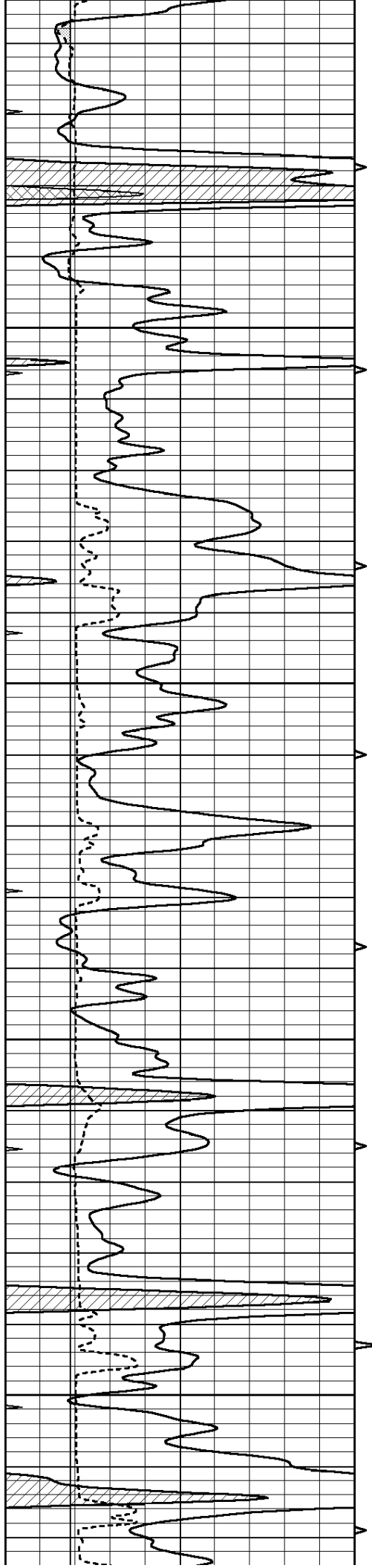
4200

4250

4300





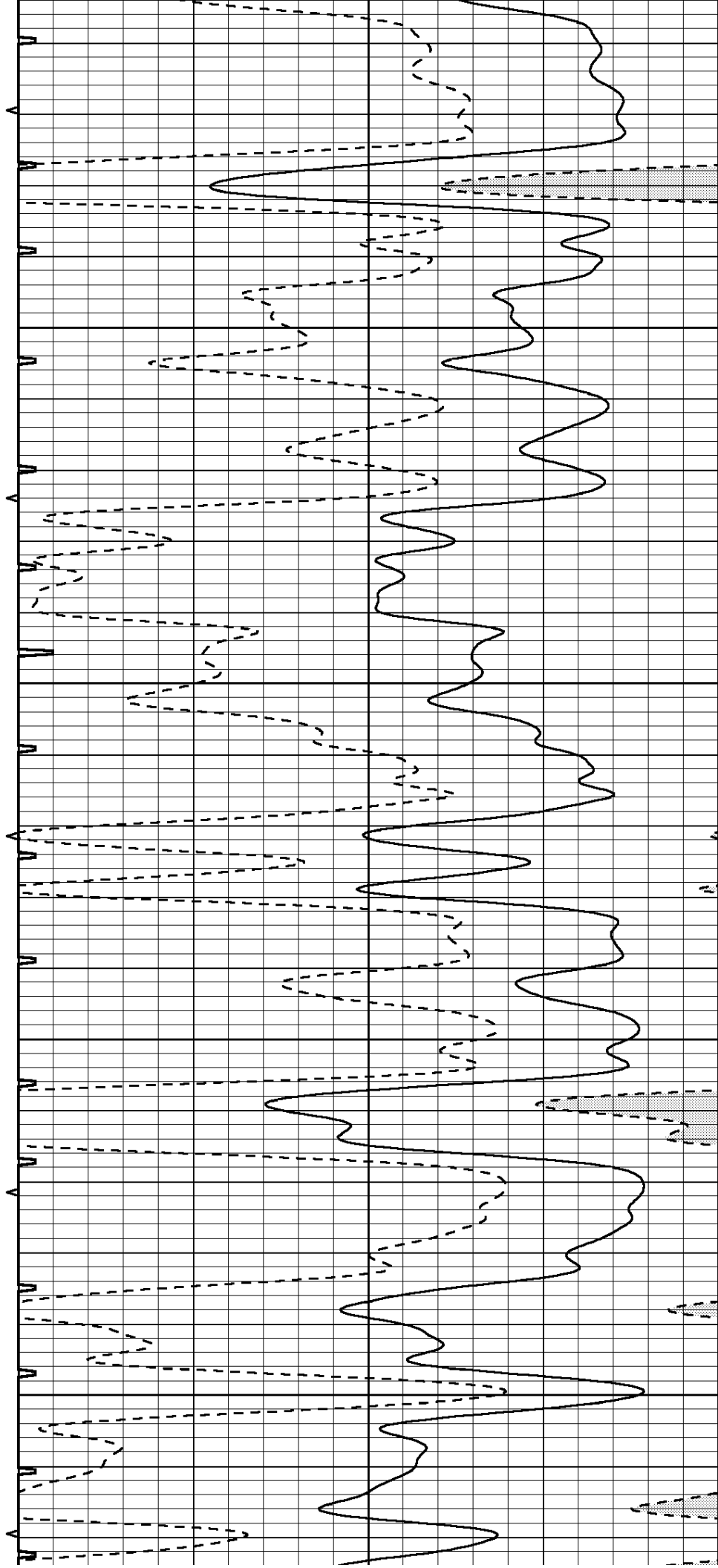


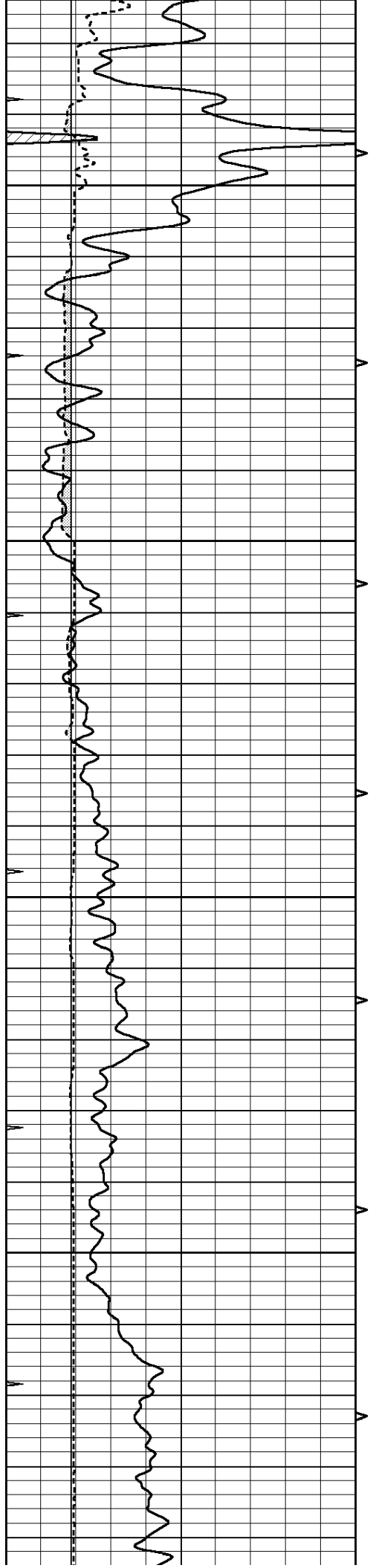
4600

4650

4700

4750



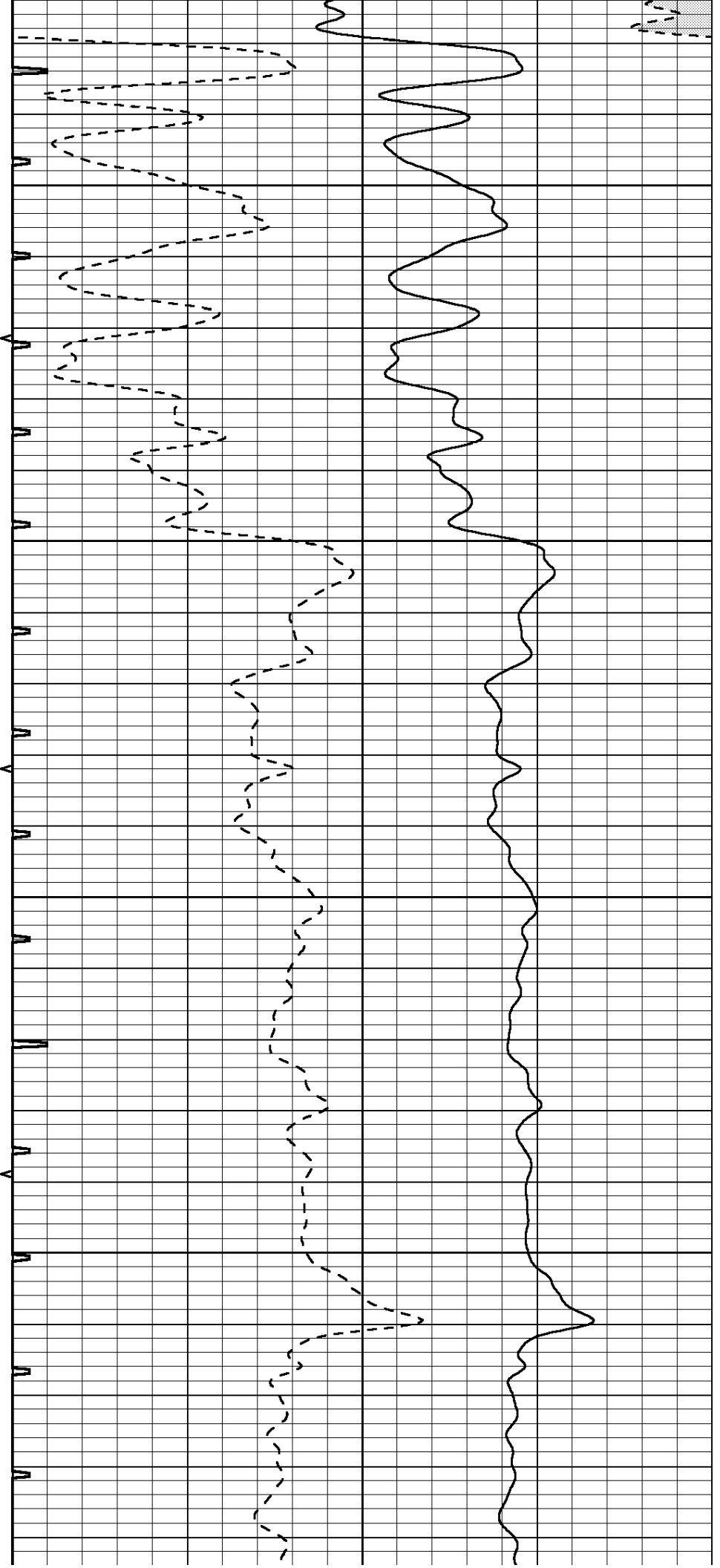


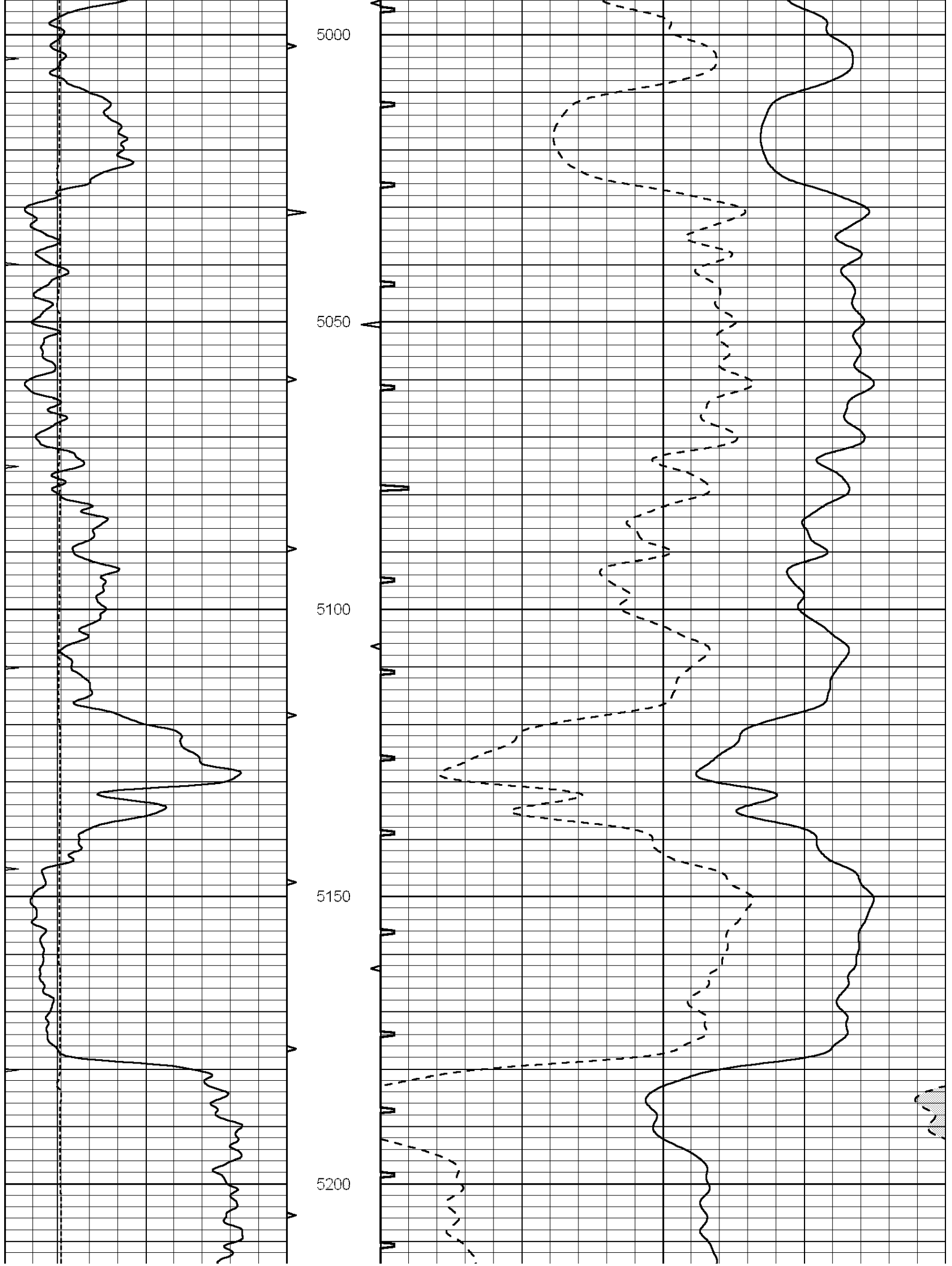
4800

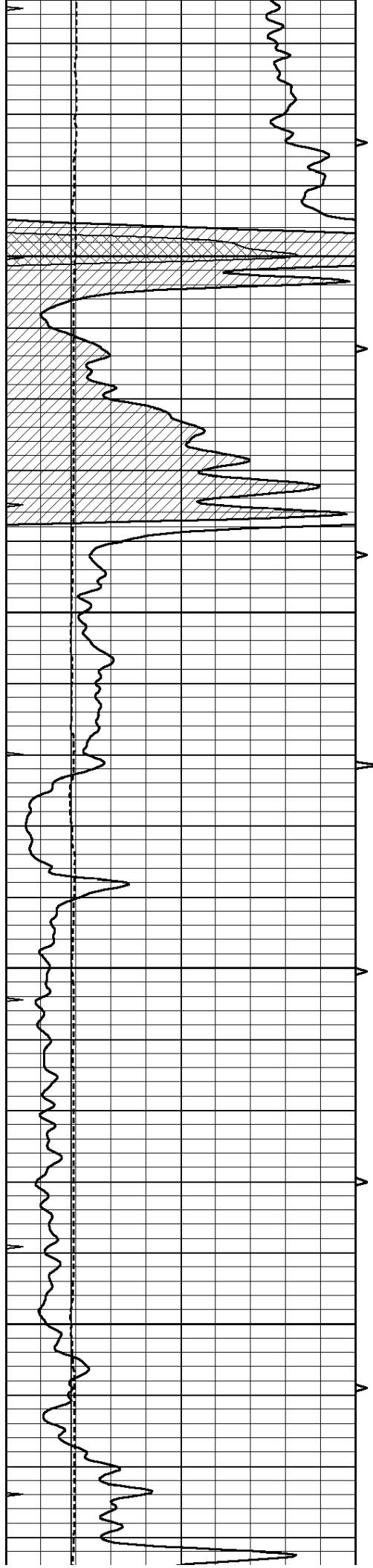
4850

4900

4950





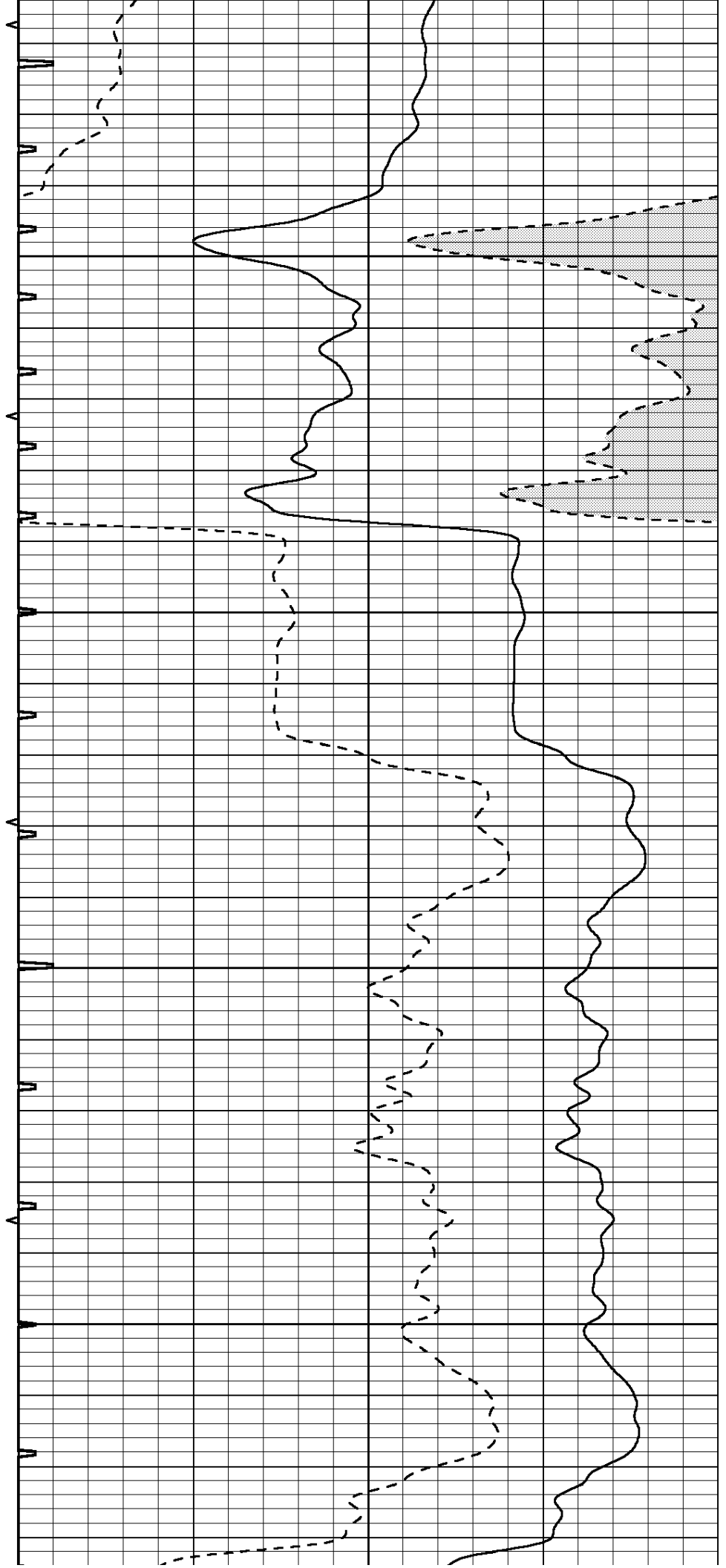


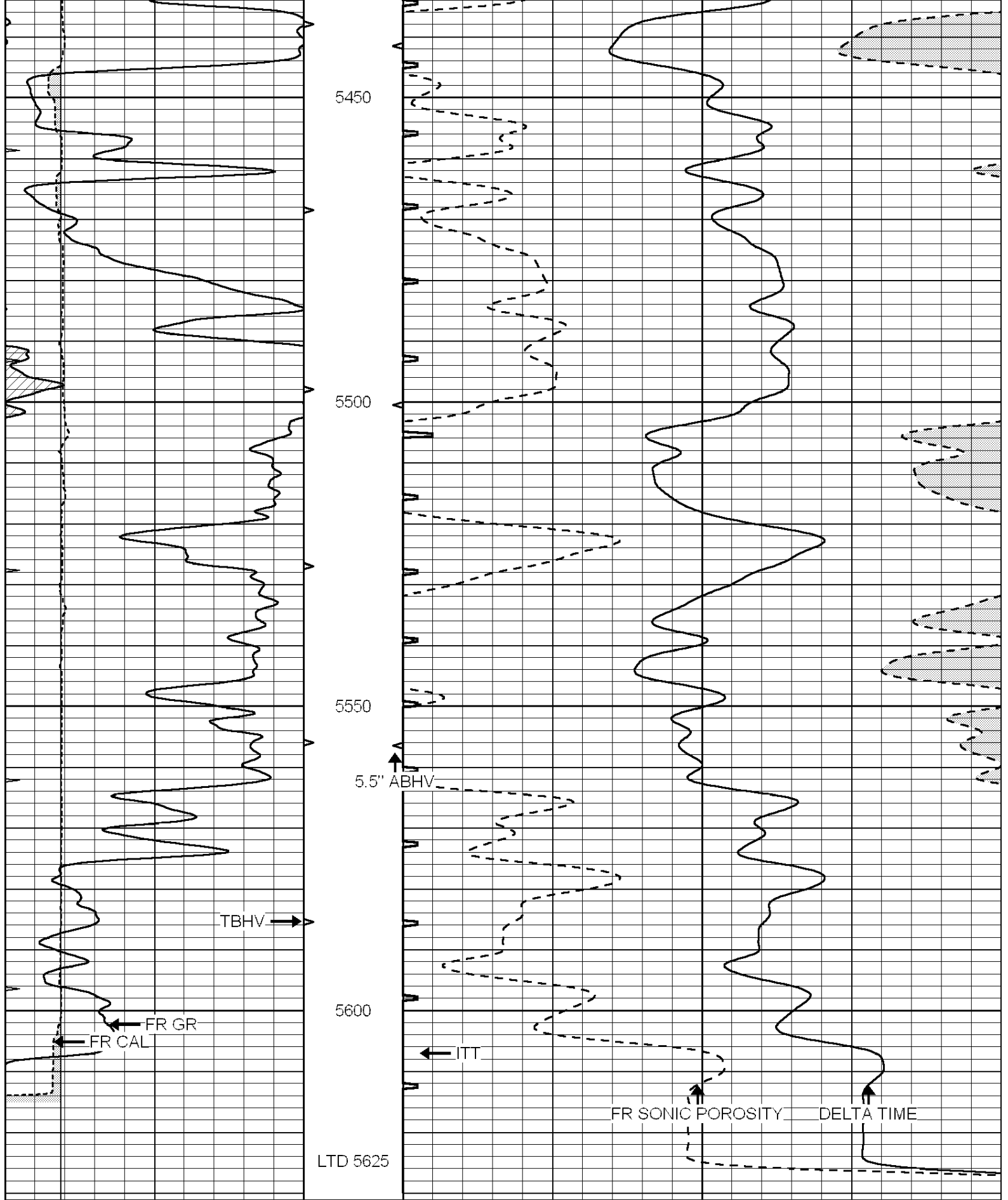
5250

5300

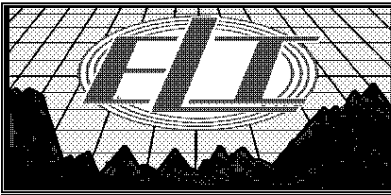
5350

5400





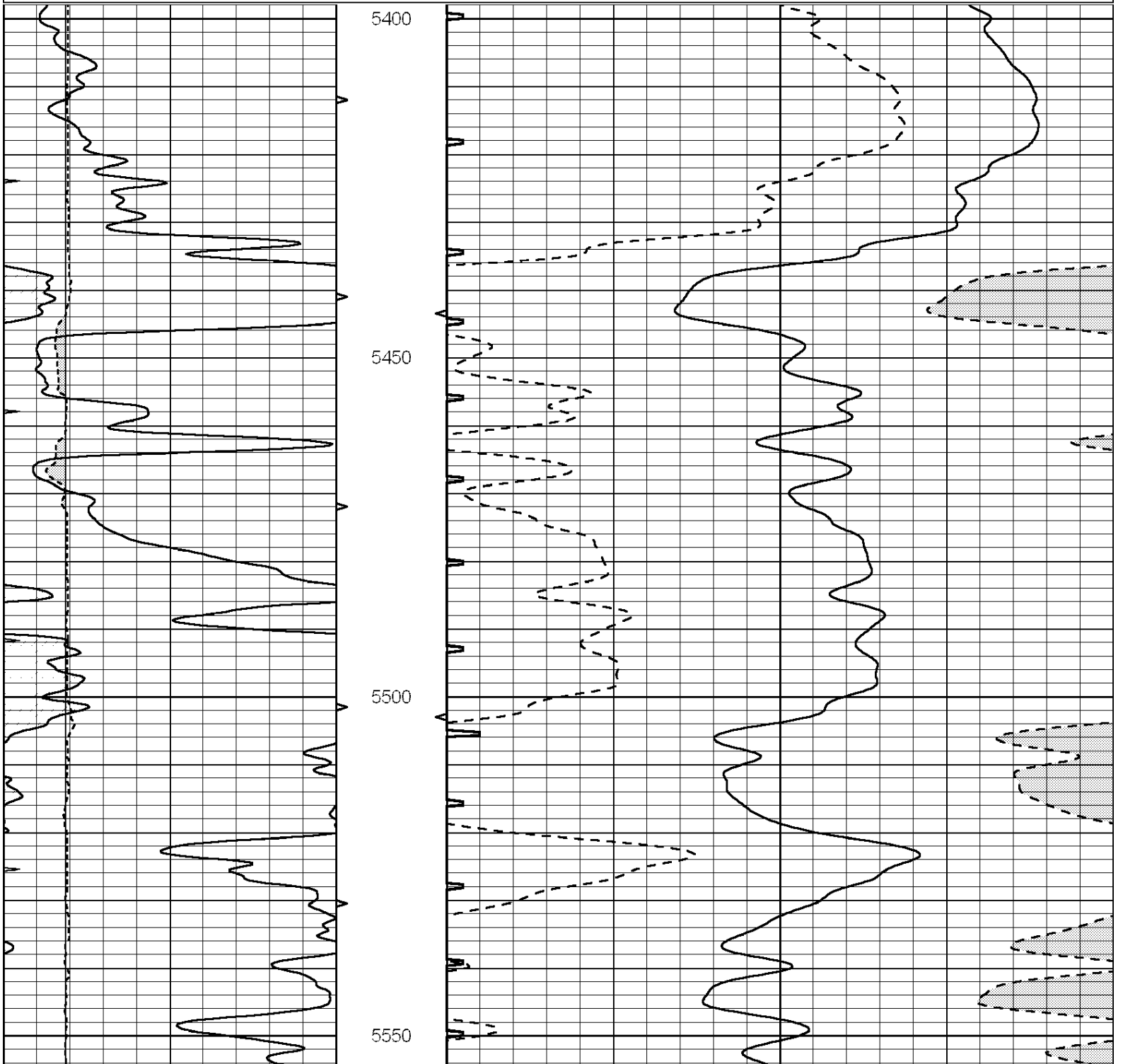
0	GAMMA RAY (GAPI)	150	ABHV	140	DELTA TIME (usec/ft)	40	
6	CALIPER (in)	16	10 (ft3)	0	30	SONIC POROSITY (pu)	-10
0	MINMK	20	TBHV	0	ITT (msec)	20	
			0 (ft3)	10			

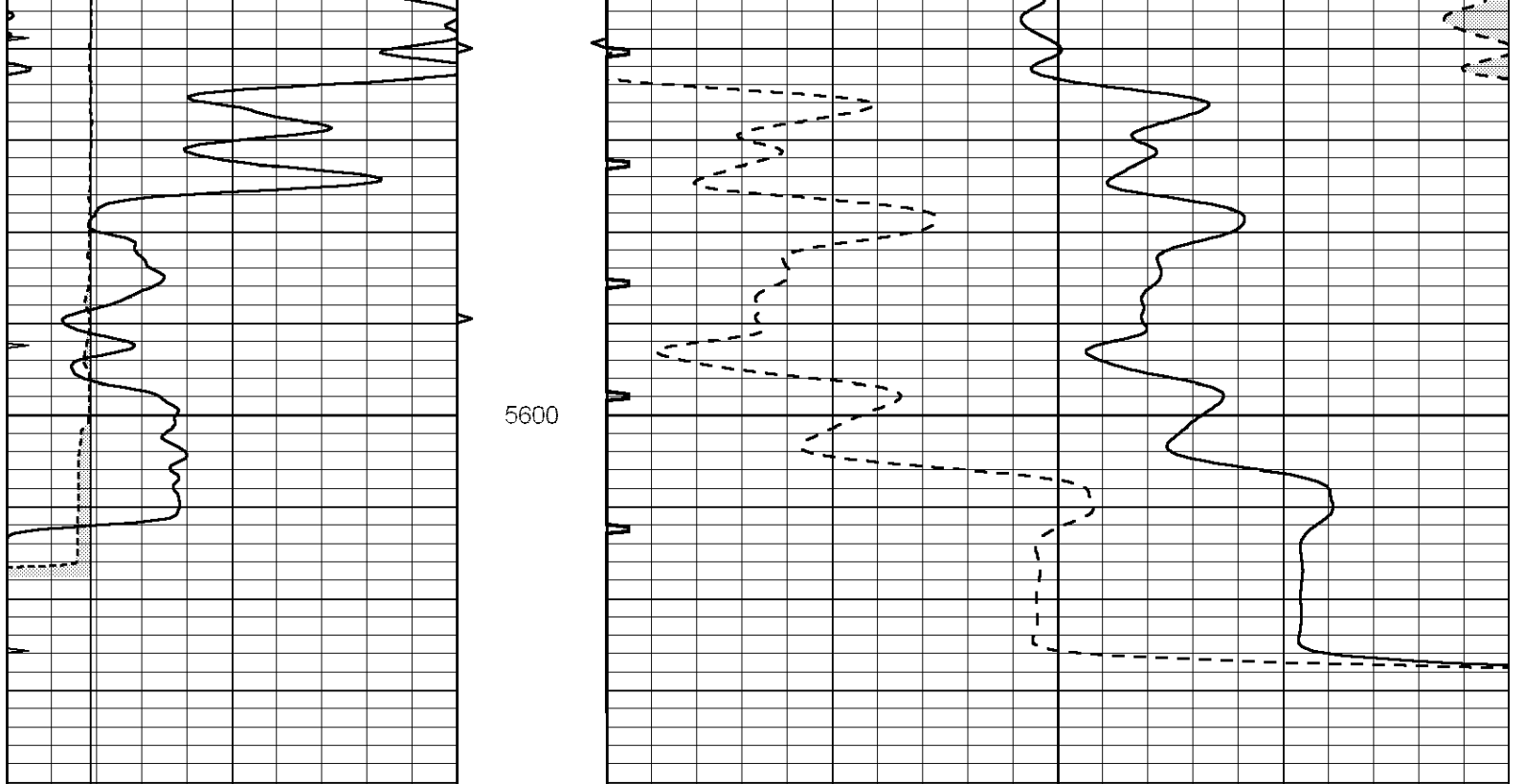


# REPEAT SECTION

Database File: 3608pe.db  
 Dataset Pathname: pass8.6  
 Presentation Format: slt  
 Dataset Creation: Fri Apr 05 00:41:32 2019  
 Charted by: Depth in Feet scaled 1:240

0	GAMMA RAY (GAPI)	150	ABHV	140	DELTA TIME (usec/ft)	40	
6	CALIPER (in)	16	10 (ft3)	0	30	SONIC POROSITY (pu)	-10
0	MINMK	20	TBHV	0	ITT (msec)	20	
			0 (ft3)	10			





0	GAMMA RAY (GAPI)	150	ABHV	140	DELTA TIME (usec/ft)	40
6	CALIPER (in)	16	10 (ft3)	0	SONIC POROSITY (pu)	-10
0	MINMK	20	TBHV	0	ITT (msec)	20
			0 (ft3)	10		