



LITHO DENSITY
NEUTRON
LOG

Company Palomino Petroleum
Well CB Frye #2
Field Good Science Northeast
County Trego
State Kansas

Company Palomino Petroleum
Well CB Frye #2
Field Good Science Northeast
County Trego State Kansas

Location: 1665' FSL & 1120' FWL
API #: 15 195 23079
SEC 23 TWP 15S RGE 25W
Permanent Datum Ground Level Elevation 2450'
Log Measured From KB 5' AGL
Drilling Measured From KB
Other Services
DIL
ML
Elevation
K.B. 2455'
D.F. 2454'
G.L. 2450'

Date	4/05/19
Run Number	One
Depth Driller	4530'
Depth Logger	4528'
Bottom Logged Interval	4506'
Top Log Interval	3500'
Casing Driller	8 5/8" @ 209'
Casing Logger	209'
Bit Size	7 7/8"
Type Fluid in Hole	Chemical
Density / Viscosity	9.3/62
pH / Fluid Loss	9.5/8.8
Source of Sample	Pit Chlorides 5000 PPM
Rm @ Meas. Temp	1.4@78degf
Rmt @ Meas. Temp	1.1@78degf
Rmc @ Meas. Temp	1.7@78degf
Source of Rmf / Rmc	Calculated
Rm @ BHT	0.93@117degf
Time Circulation Stopped	2:15 p.m
Time Logger on Bottom	5:00 p.m
Maximum Recorded Temperature	117degf
Equipment Number	T-605
Location	Hays, KS
Recorded By	C.Patterson
Witnessed By	Mr. Eli J Felts

<<< Fold Here >>>

All interpretations are opinions based on inferences from electrical or other measurements and we cannot and do not guarantee the accuracy or correctness of any interpretation, and we shall not, except in the case of gross or willful negligence on our part, be liable or responsible for any loss, costs, damages, or expenses incurred or sustained by anyone resulting from any interpretation made by any of our officers, agents or employees. These interpretations are also subject to our general terms and conditions set out in our current Price Schedule.

Comments

South side of Arnold,KS @ intersection of Main St./ K Rd., 4 mi. North on Main St./K Rd to EE Rd./ CC Rd., Then 0.9 mi. West on EE Rd./CC Rd. to 160 Ave., Then North on 160 Ave. for 2 mi., Then West by Tank Batteries Through Cattle Guard & West to North Into Location

Thanks for using Gemini Wireline LLC
785-625-1182



MAIN PASS

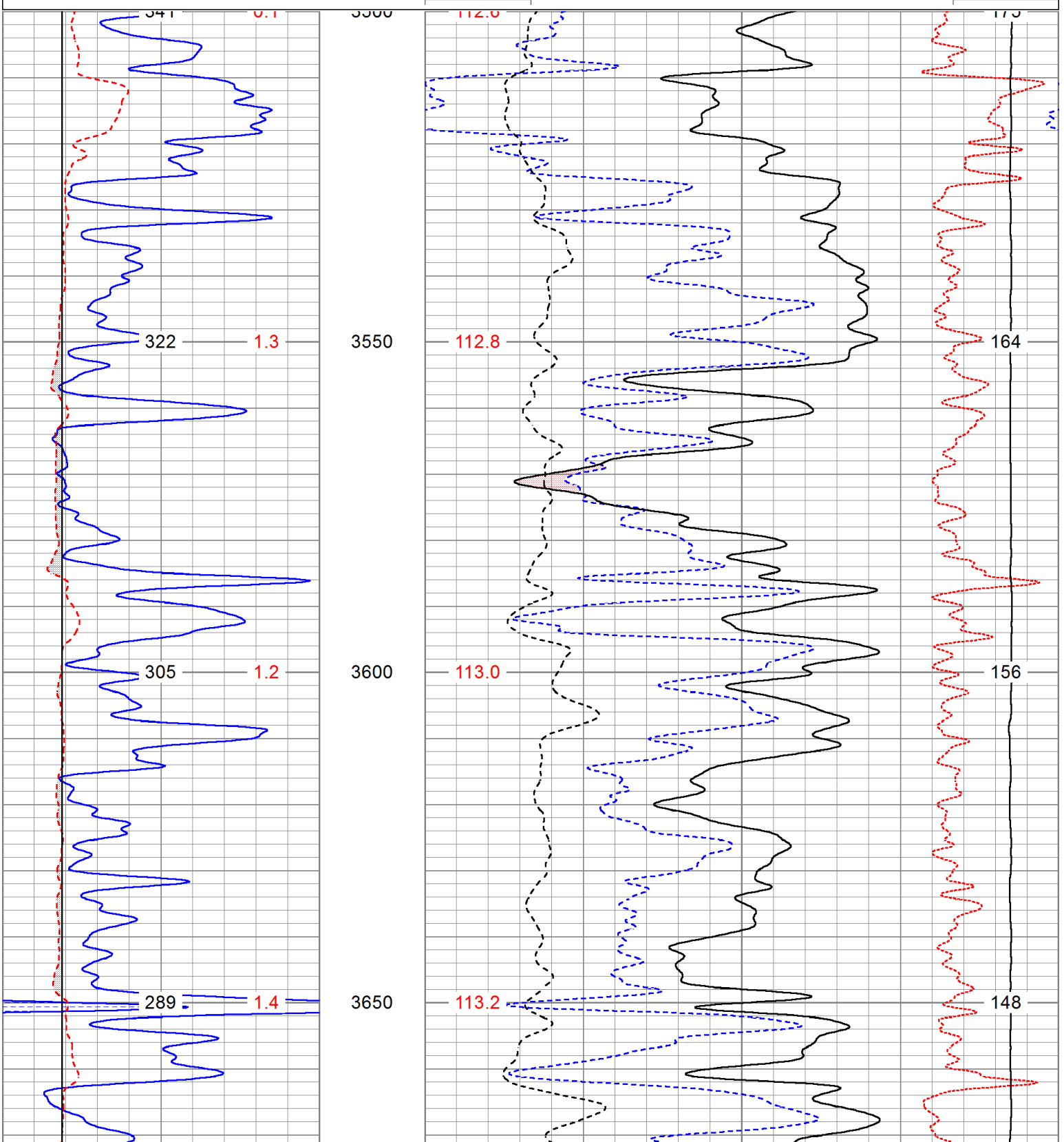
Database File ppcbrye#2oh.db
 Dataset Pathname pass2.1
 Presentation Format digital_kcdnl
 Dataset Creation Fri Apr 05 18:12:37 2019
 Charted by Depth in Feet scaled 1:240

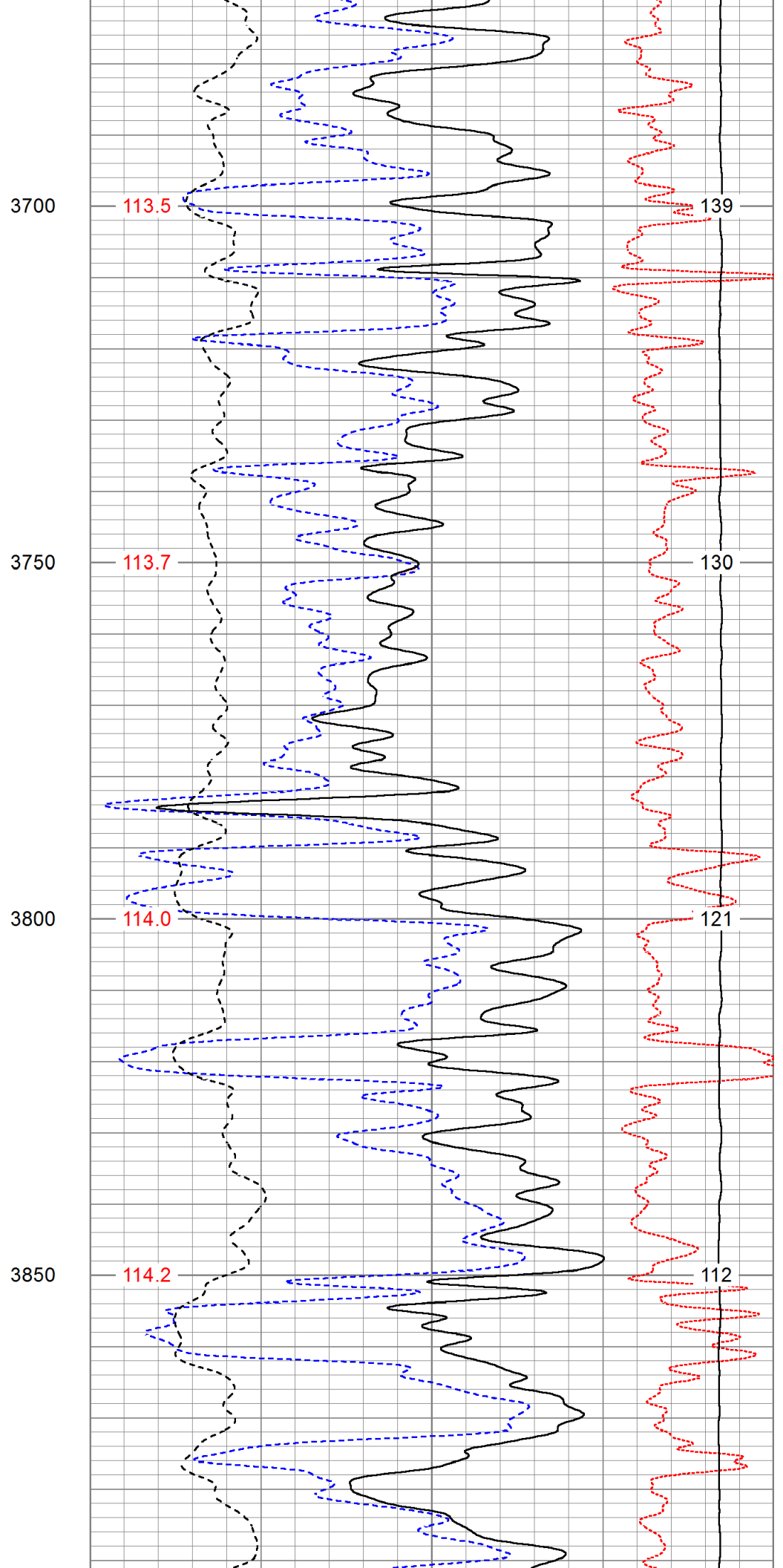
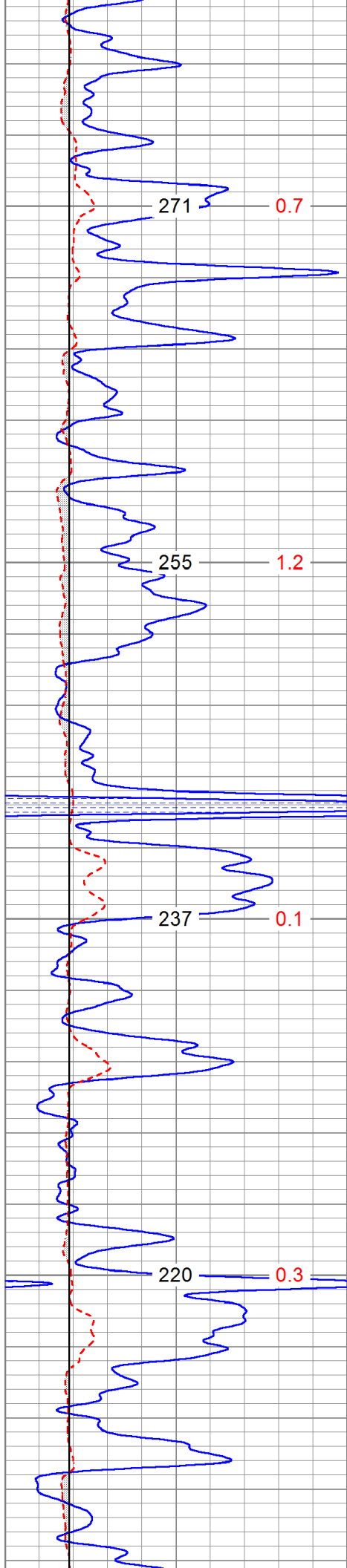
0	GR (GAPI)	150
6	DCAL (in)	16
6	BOREID (in)	16

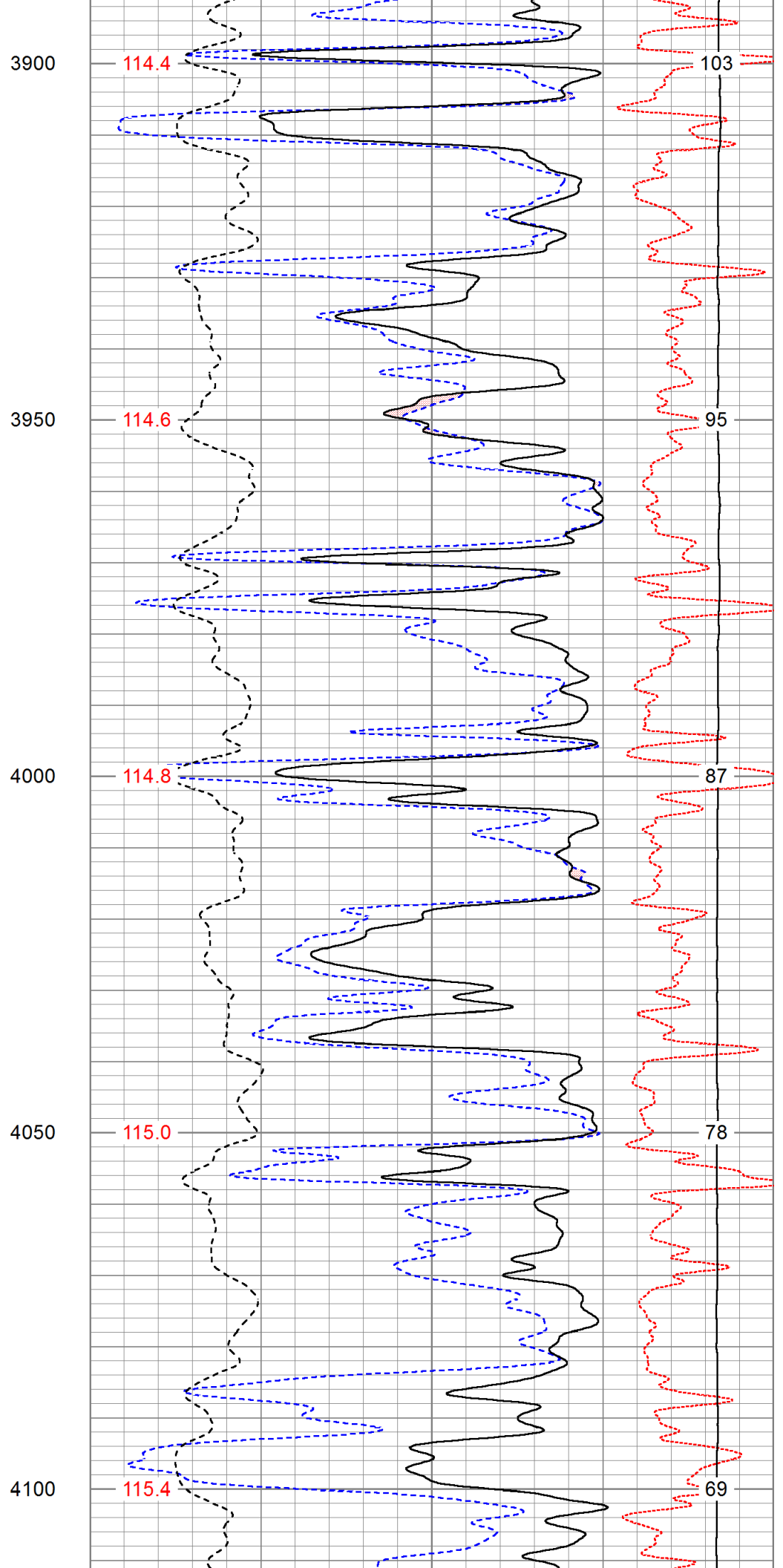
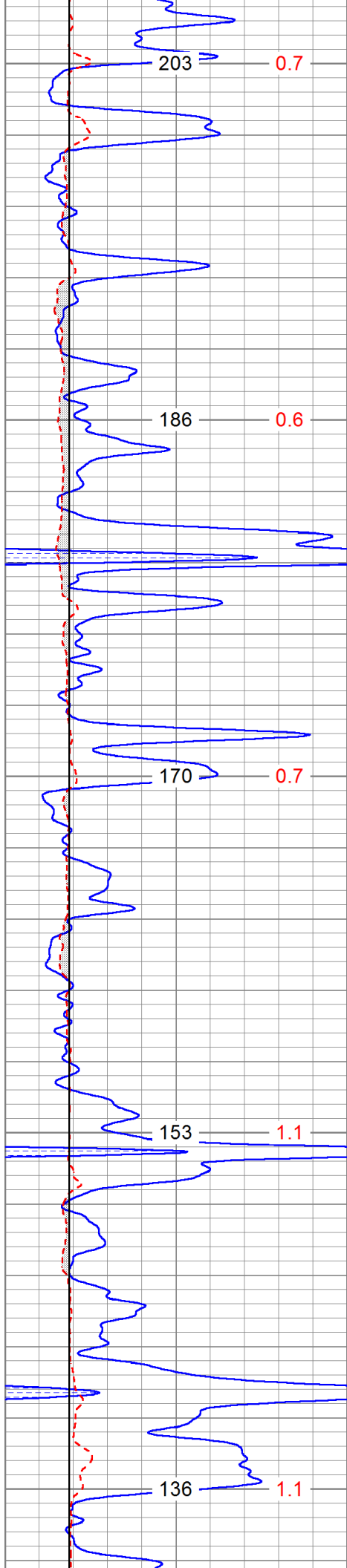
30	NPOR (pu)	-10
30	DPOR (pu)	-10
70	DPOR (pu)	30

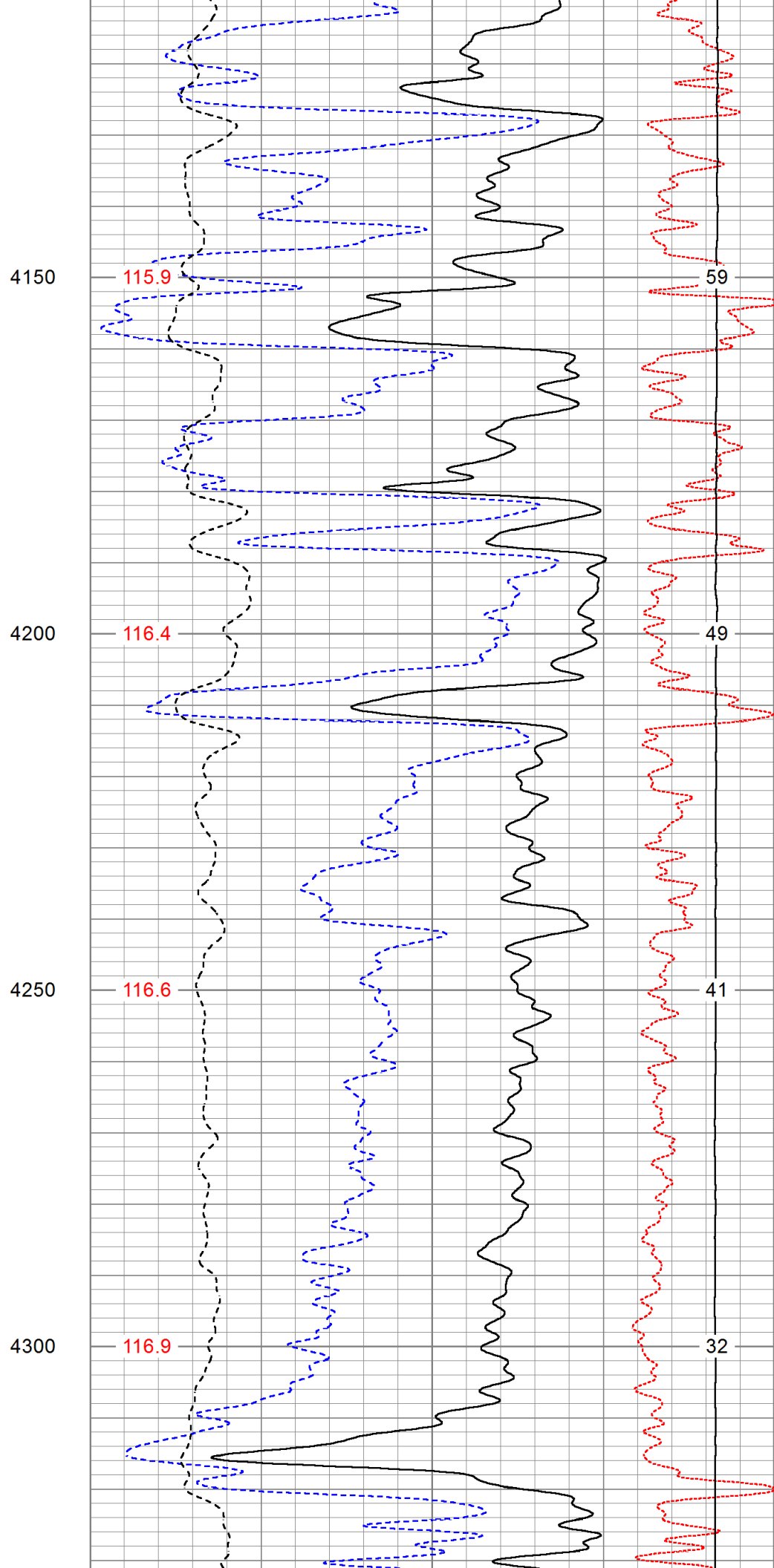
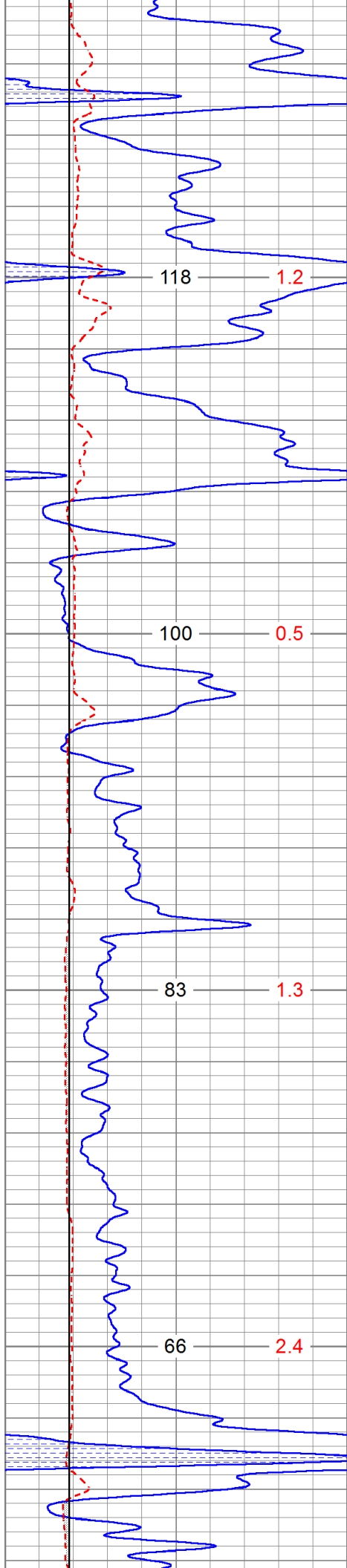
TBHV (ft3)	DEVI (deg)
------------	------------

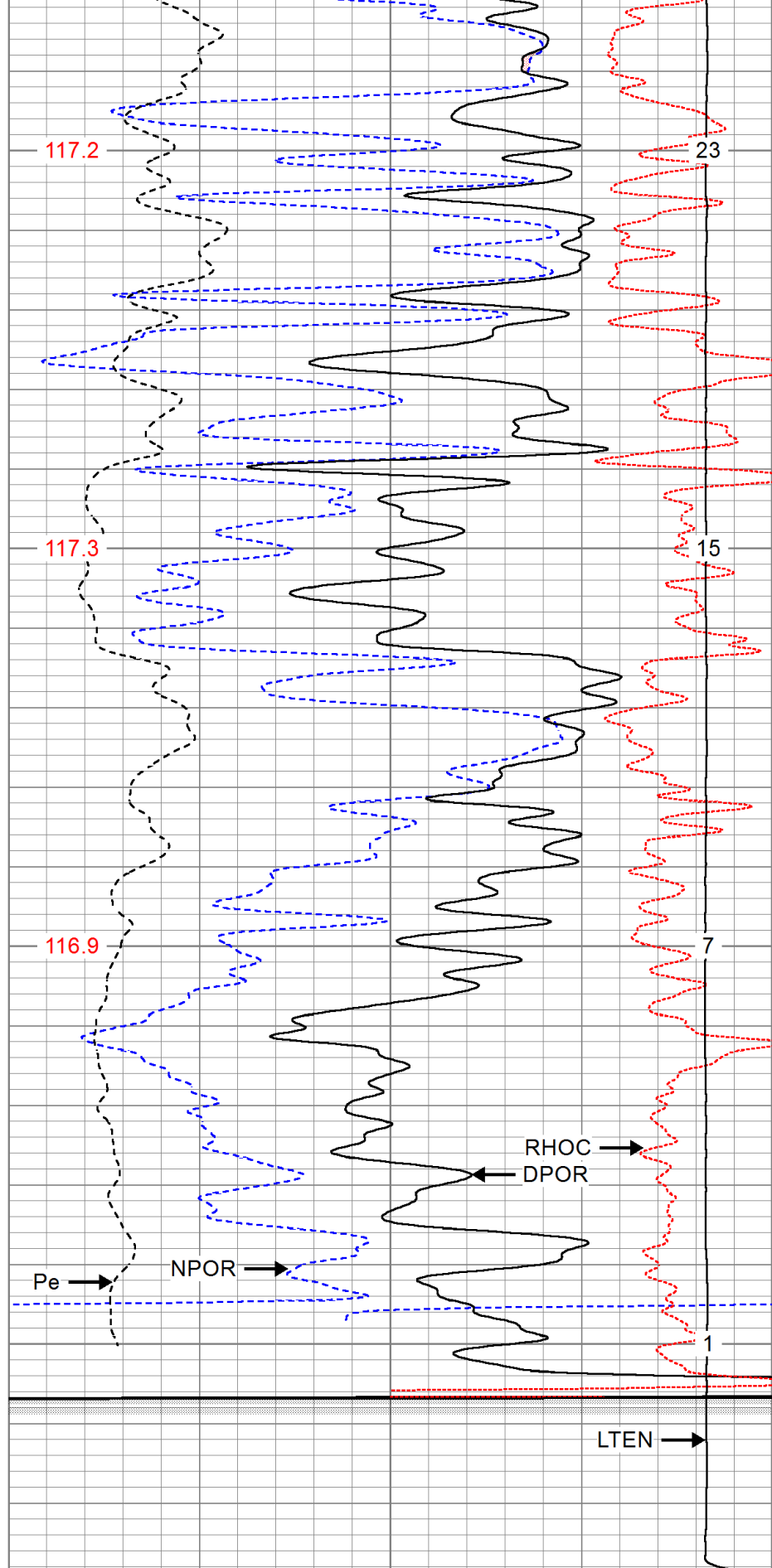
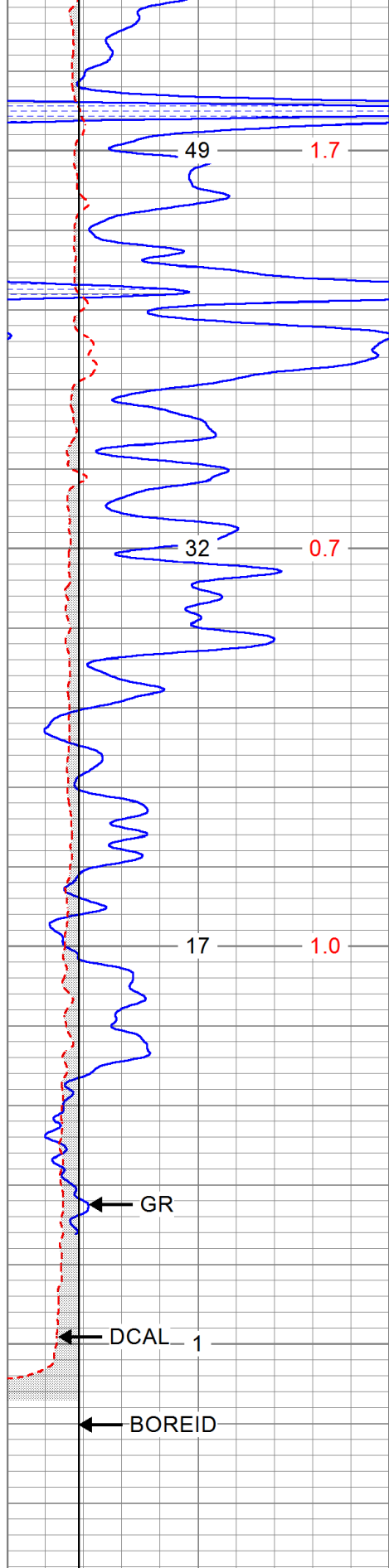
0	Pe (barn)	10	-0.25	RHOC (g/cc)	0.25
TEMP (degF)	8000	LTEN (lb)	0	ABHV (ft3)	











0	GR (GAPI)	150
6	DCAL (in)	16
6	BOREID (in)	16

30	NPOR (pu)	-10
30	DPOR (pu)	-10
70	DPOR (pu)	30

	TBHV (ft3)	DEVI (deg)
--	------------	------------

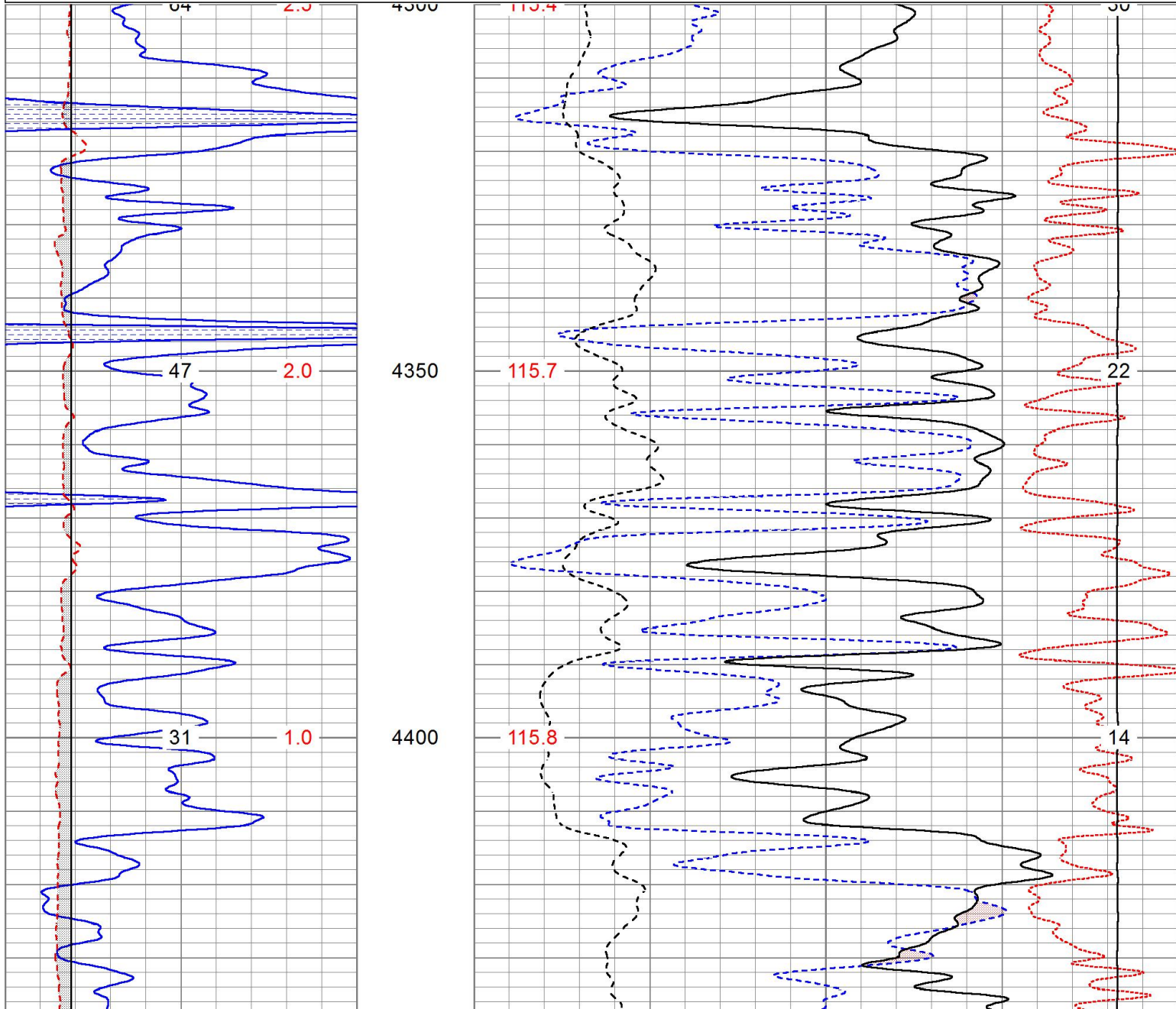
0	Pe (barn)	10 -0.25	RHOC (g/cc)	0.25
	TEMP	8000	LTEN (lb)	0

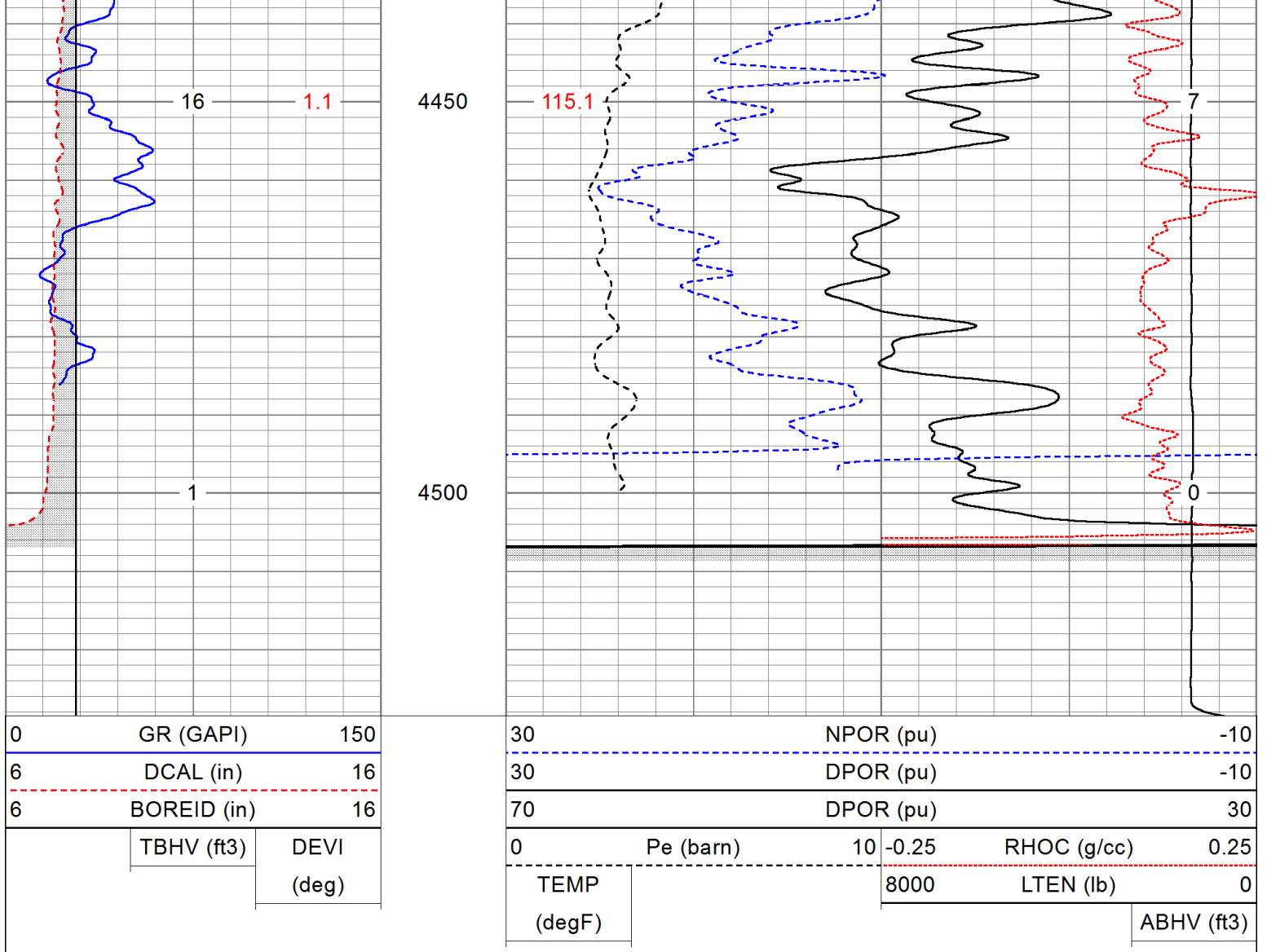


REPEAT SECTION

Database File ppcbrye#2oh.db
 Dataset Pathname pass1
 Presentation Format digital_kcdnl
 Dataset Creation Fri Apr 05 16:58:12 2019
 Charted by Depth in Feet scaled 1:240

0	GR (GAPI)	150	30	NPOR (pu)	-10
6	DCAL (in)	16	30	DPOR (pu)	-10
6	BOREID (in)	16	70	DPOR (pu)	30
	TBHV (ft3)	DEVI (deg)	0	Pe (barn)	10 -0.25
			TEMP (degF)		RHOC (g/cc) 0.25
					LTEN (lb) 0
					ABHV (ft3)





Calibration Report

Database File ppcbrye#2oh.db
 Dataset Pathname pass2.1
 Dataset Creation Fri Apr 05 18:12:37 2019

Dual Induction Calibration Report

Serial-Model: 5375-G
 Surface Cal Performed: Tue Jan 22 08:45:42 2019
 Downhole Cal Performed: Tue Jan 22 08:46:17 2019
 After Survey Verification Performed: Tue Jan 22 08:46:17 2019

Surface Calibration

Loop:	Readings			V	References			Results	
	Air	Loop			Air	Loop		m	b
Deep	0.002	0.642		V	0.000	350.000	mmho/m	547.166	-1.056
Medium	0.004	0.724		V	0.000	425.000	mmho/m	590.216	-2.564
Internal:	Zero	Cal			Zero	Cal		m	b
Deep	0.002	0.642		V	0.000	350.000	mmho/m	547.349	-1.170
Medium	0.004	0.725		V	0.000	550.000	mmho/m	763.497	-3.249

Downhole Calibration

Readings References Results

Internal:	Readings			References			Results	
	Zero	Cal		Zero	Cal		m	b
Deep	0.089	349.955	mmho/m	0.113	349.997	mmho/m	1.000	0.024
Medium	-0.171	400.157	mmho/m	-0.049	400.115	mmho/m	1.000	0.122
Shallow	2.429	0.011	V	500.000	2.000	Ohm-m	200.929	0.282

After Survey Verification

Internal:	Readings			Targets			Results	
	Zero	Cal		Zero	Cal		m'	b'
Deep	0.000	0.000	mmho/m	0.089	349.955	mmho/m	1.000	0.024
Medium	0.000	0.000	mmho/m	-0.171	400.157	mmho/m	1.000	0.122
Shallow	0.000	0.000	Ohm-m	500.000	2.000	Ohm-m	1.000	0.000

Neutron Calibration Report

Serial Number: AD5139
 Tool Model: ADMY5139
 Performed: (Not Performed)

Calibrator Value: 1 NAPI
 Calibrator Reading: 1 cps
 Sensitivity: 1 NAPI/cps

Temperature Calibration Report

Serial Number: WithMC
 Tool Model: WMC
 Performed: Wed Dec 05 04:54:01 2018

	Reference	Reading
Low Reference:	0.00 degF	0.00 degF
High Reference:	1.00 degF	1.00 degF

Gain: 1.00
 Offset: 0.00
 Delta Spacing: 1

Inclinometer Calibration Report

Performed: Wed Dec 05 04:53:48 2018

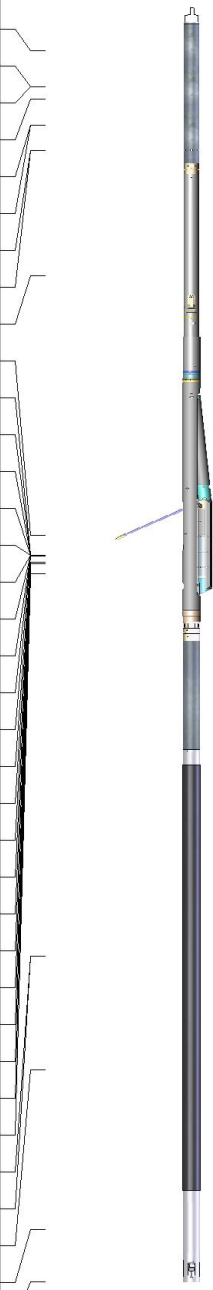
	Low Read.	High Read.	Low Ref.	High Ref.	
X Accelerometer	205.00	1843.00	-1.00	1.00	gee
Y Accelerometer	205.00	1843.00	-1.00	1.00	gee
Z Accelerometer					gee

Gamma Ray Calibration Report

Serial Number: WithMC
 Tool Model: WMC
 Performed: Wed Dec 05 04:58:30 2018

Calibrator Value: 1.0 GAPI

Background Reading: 0.0 cps
 Calibrator Reading: 1.0 cps
 Sensitivity: 1.0000 GAPI/cps

Sensor	Offset (ft)	Schematic	Description	Length (ft)	O.D. (in)	Weight (lb)
GR	40.07		CHD-STD	0.50	1.69	1.00
ACCY	38.91		ADT-WMC (WithMC) Admyr Telemetry With Mudcell	4.58	3.50	120.00
ACCX	38.91					
SSTAT	38.49		NEU-ADMY5139 (AD5139) Admyer NEU DIGITAL	5.65	3.50	50.00
PSTAT	37.66					
ASTAT	37.66		ADT1LITH-A (1) Admyr Litho Density Tool	9.29	3.50	240.00
GRD	36.82					
TEMP	36.82					
NEU	32.76					
LStat	24.30					
LS8	23.64					
LS7	23.64					
LS6	23.64					
LS5	23.64					
LS4	23.64					
LS3	23.64		DIL-G (5375) Gearhart	21.47	4.00	345.00
LS2	23.64					
LS1	23.64					
LSV	23.64					
LSD	23.62					
SSV	23.43					
SS8	23.43					
SS7	23.43					
SS6	23.43					
SS5	23.43					
SS4	23.43					
SS3	23.43					
SS2	23.43					
SS1	23.43					
DCAL	23.37					
SSD	23.04					
SP	10.60					
CILD	10.60					
CILM	6.89					
RLL3	1.70					
TR_Mon	0.00					

Dataset: ppcbrye#2oh.db: field/well/run1/pass2.1
 Total length: 41.49 ft
 Total weight: 756.00 lb
 O.D.: 4.00 in