

<<< Fold Here >>>

All interpretations are opinions based on inferences from electrical or other measurements and we cannot and do not guarantee the accuracy or correctness of any interpretation, and we shall not, except in the case of gross or willful negligence on our part, be liable or responsible for any loss, costs, damages, or expenses incurred or sustained by anyone resulting from any interpretations made by any of our officers, agents or employees. These interpretations are also subject to our general terms and conditions set out in our current Price Schedule.

Comments

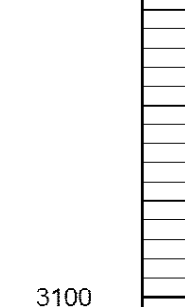
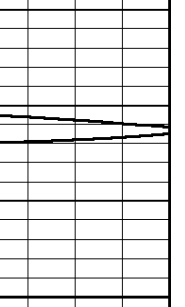
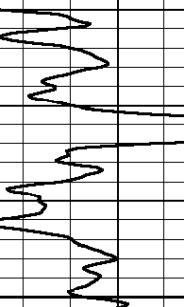
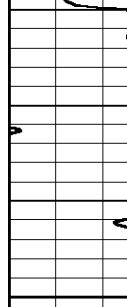
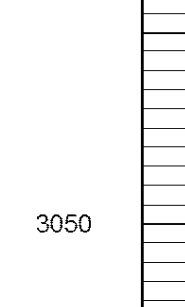
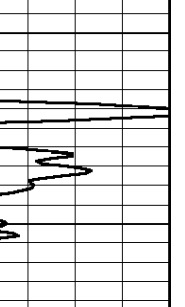
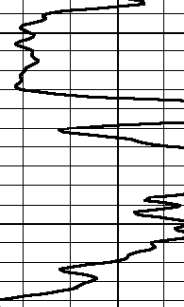
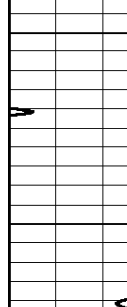
THANK YOU FOR USING  
PERF-TECH WIRELINE SERVICES, INC.  
785-628-3969

DIRECTIONS: QUINTER, Ks.  
SOUTH SIDE OF I-70, TAKE Z RD 5 WEST TO 62 RD,  
19 SOUTH ON 62 RD TO G WEST,  
3 WEST, NORTH INTO



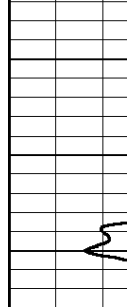
# PORT COLLAR

Database File: mar71906.db  
Dataset Pathname: pass4  
Presentation Format: 3x5  
Dataset Creation: Thu Mar 07 08:54:11 2019 by Log SCH 111116  
Charted by: Depth in Feet scaled 1:240



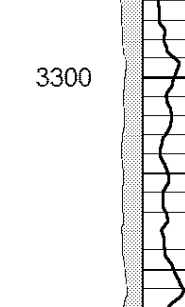
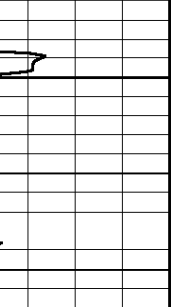
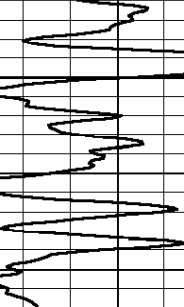
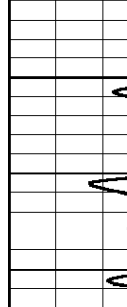
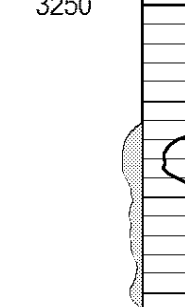
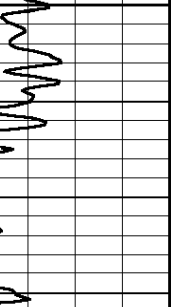
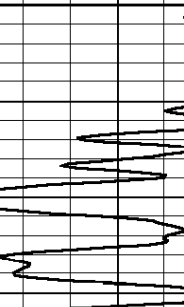
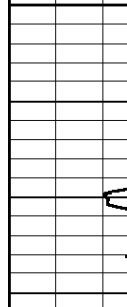
475 3' TRAVEL TIME (usec) 235  
9 Collar Locator -1

PORT COLLAR



# MAIN PASS

Database File: mar71906.db  
Dataset Pathname: pass3  
Presentation Format: 3x5  
Dataset Creation: Thu Mar 07 08:26:09 2019 by Log SCH 111116  
Charted by: Depth in Feet scaled 1:240



475 3' TRAVEL TIME (usec) 235  
9 Collar Locator -1

Top of Cement

3000

3050

3100

3150

3200

3250

3300

3350

3400

3450

3500

3550

3600

3650

3700

3750

3800

3850

3900

3950

4000

4050

4100

4150

4200

4250

4300

4350

4400

4450

4500

4550

4600

4650

4700

4750

4800

4850

4900

4950

5000

5050

5100

5150

5200

5250

5300

5350

5400

5450

5500

5550

5600

5650

5700

5750

5800

5850

5900

5950

6000

6050

6100

6150

6200

6250

6300

6350

6400

6450

6500

6550

6600

6650

6700

6750

6800

6850

6900

6950

7000

7050

7100

7150

7200

7250

7300

7350

7400

7450

7500

7550

7600

7650

7700

7750

7800

7850

7900

7950

8000

8050

8100

8150

8200

8250

8300

8350

8400

8450

8500

8550

8600

8650

8700

8750

8800

8850

8900

8950

9000

9050

9100

9150

9200

9250

9300

9350

9400

9450

9500

9550

9600

9650

9700

9750

9800

9850

9900

9950

10000

10050

10100

10150

10200

10250

10300

10350

10400

10450

10500

10550

10600

10650

10700

10750

10800

10850

10900

10950

11000

11050

11100

11150

11200

11250

11300

11350

11400

11450