



**MICRO
LOG**

Company **DOLOMITE RESOURCES CORPORATION**
 Well **UHRICH #33-2**
 Field **FOXFIRE**
 County **GRAHAM** State **KANSAS**

Location: **API # : 15-065-24169-0000**
2256' FSL & 330' FWL
S1/2 - NW - NW - SW
SEC 33 TWP 10S RGE 25W
 Permanent Datum **GROUND LEVEL** Elevation **2449**
 Log Measured From **KELLY BUSHING** 5' A.G.L.
 Drilling Measured From **KELLY BUSHING**
 Other Services **CDL/CNL/PE DIL**
 Elevation **K.B. 2454 D.F. 2452 G.L. 2449**

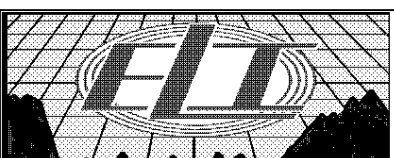
Date	7/21/19
Run Number	TWO
Depth Driller	4070
Depth Logger	4068
Bottom Logged Interval	4066
Top Log Interval	3500
Casing Driller	8 5/8"@217'
Casing Logger	217
Bit Size	7 7/8"
Type Fluid in Hole	CHEMICAL MUD
Density / Viscosity	9.2/54
pH / Fluid Loss	10.5/6.8
Source of Sample	FLOWLINE
Rim @ Meas. Temp	.680@94F
Rmf @ Meas. Temp	.510@94F
Rmc @ Meas. Temp	.816@94F
Source of Rmf / Rmc	MEASUREMENT
Rim @ BHT	.546@117F
Time Circulation Stopped	5 HOURS
Time Logger on Bottom	3:00 P.M.
Maximum Recorded Temperature	117F
Equipment Number	922339
Location	HAYS, KANSAS
Recorded By	JEFF LUEBBERS
Witnessed By	TOM PRONOLD

<<< Fold Here >>>

All interpretations are opinions based on inferences from electrical or other measurements and we cannot and do not guarantee the accuracy or correctness of any interpretation, and we shall not, except in the case of gross or willful negligence on our part, be liable or responsible for any loss, costs, damages, or expenses incurred or sustained by anyone resulting from any interpretation made by any of our officers, agents or employees. These interpretations are also subject to our general terms and conditions set out in our current Price Schedule.

Comments

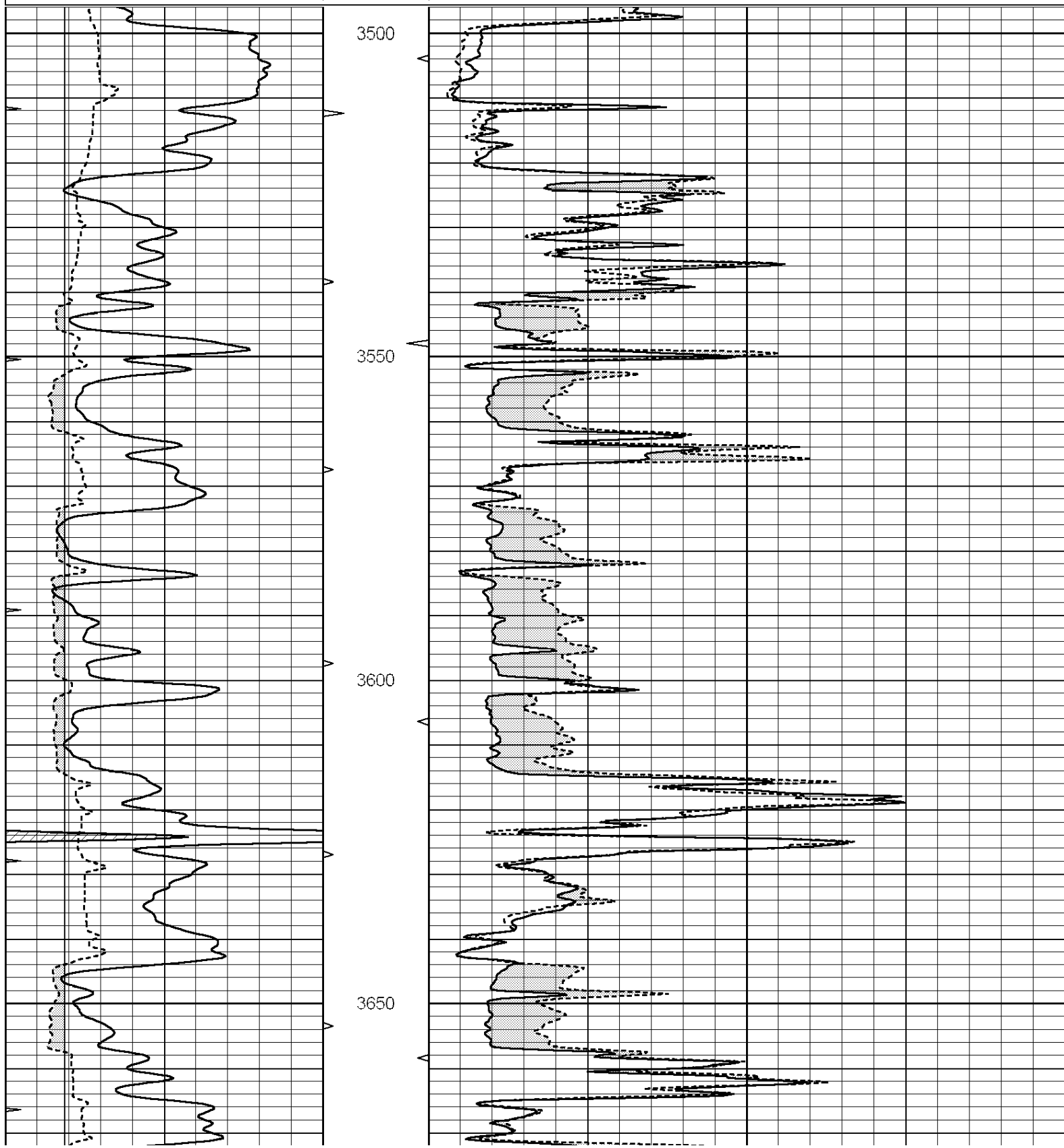
THANK YOU FOR USING ELI WIRELINE HAYS, KANSAS (785) 628-6395
 DIRECTIONS
 COLLYER, KS., W. TO "RD. 120", 7N. TO COUNTY LINE, JOG E. THEN N., E. INTO AT TANK BATTERY

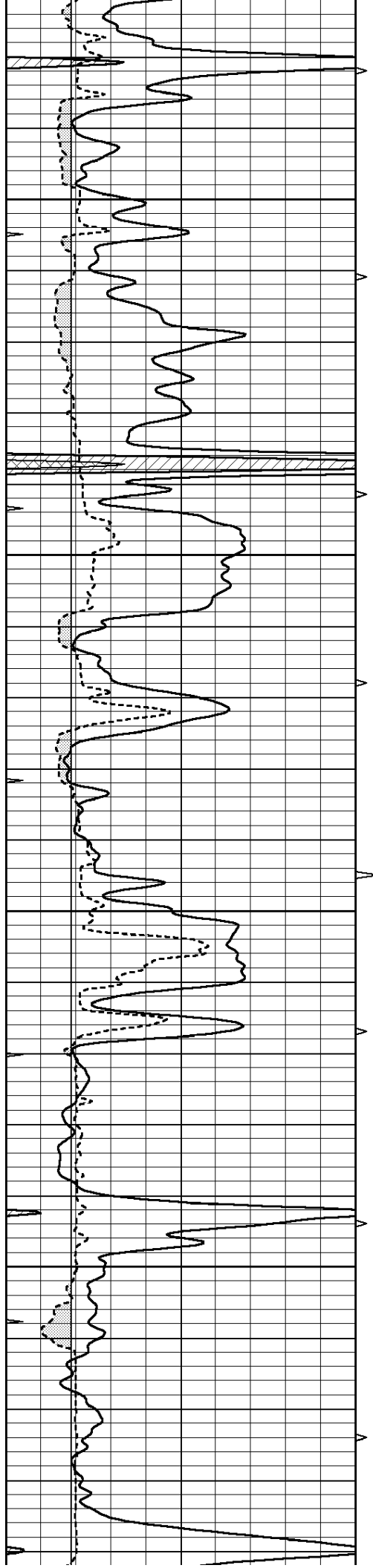


MAIN SECTION

Database File: 3744pe.db
 Dataset Pathname: pass7.1
 Presentation Format: micro
 Dataset Creation: Sun Jul 21 14:54:35 2019 by Calc SOC 120430
 Charted by: Depth in Feet scaled 1:240

0	GAMMA RAY (GAPI)	150	ABHV	0	MEL1.5 (Ohm-m)	40
6	CALIPER (in)	16	10 (ft3)	0	MEL 20 (Ohm-m)	40
0	MINMK	20	TBHV			
			0 (ft3)	10		



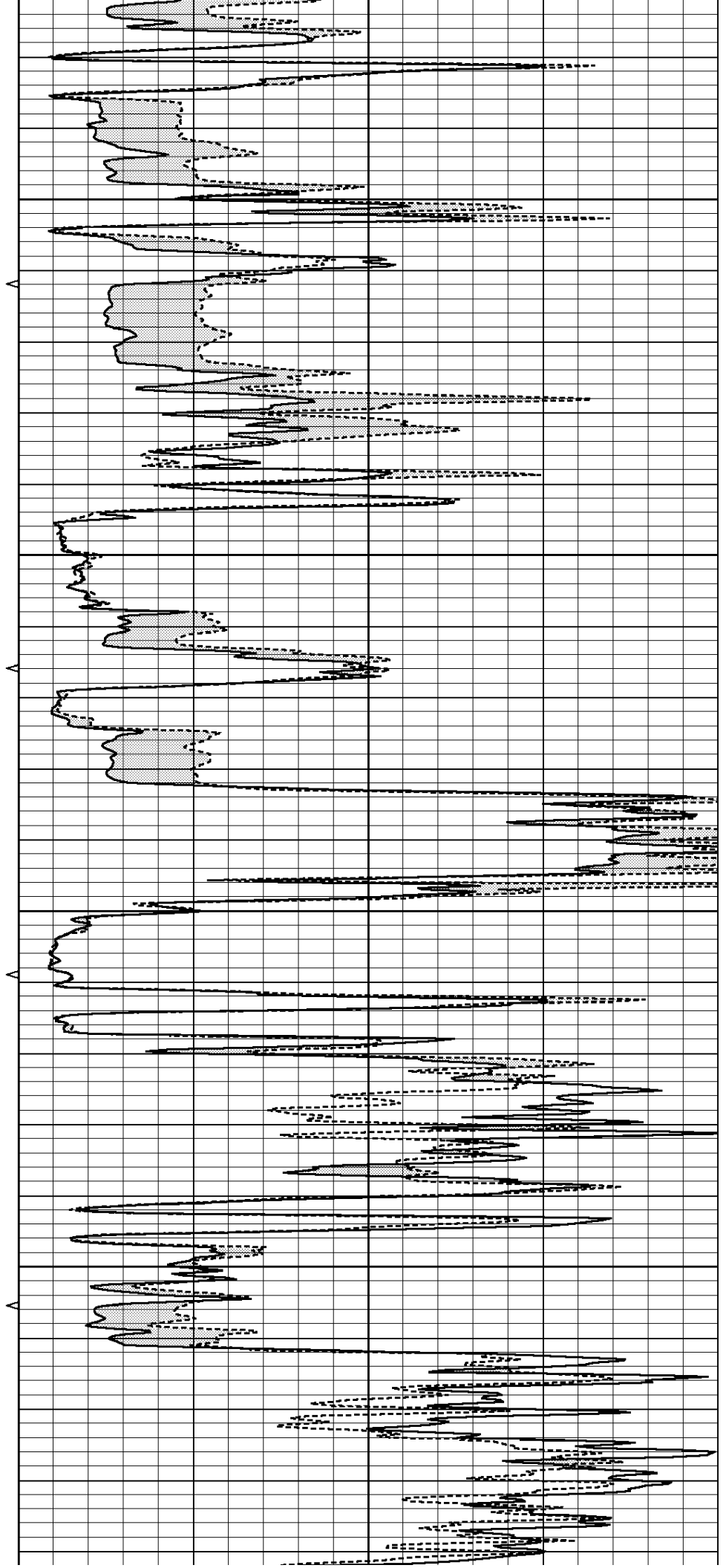


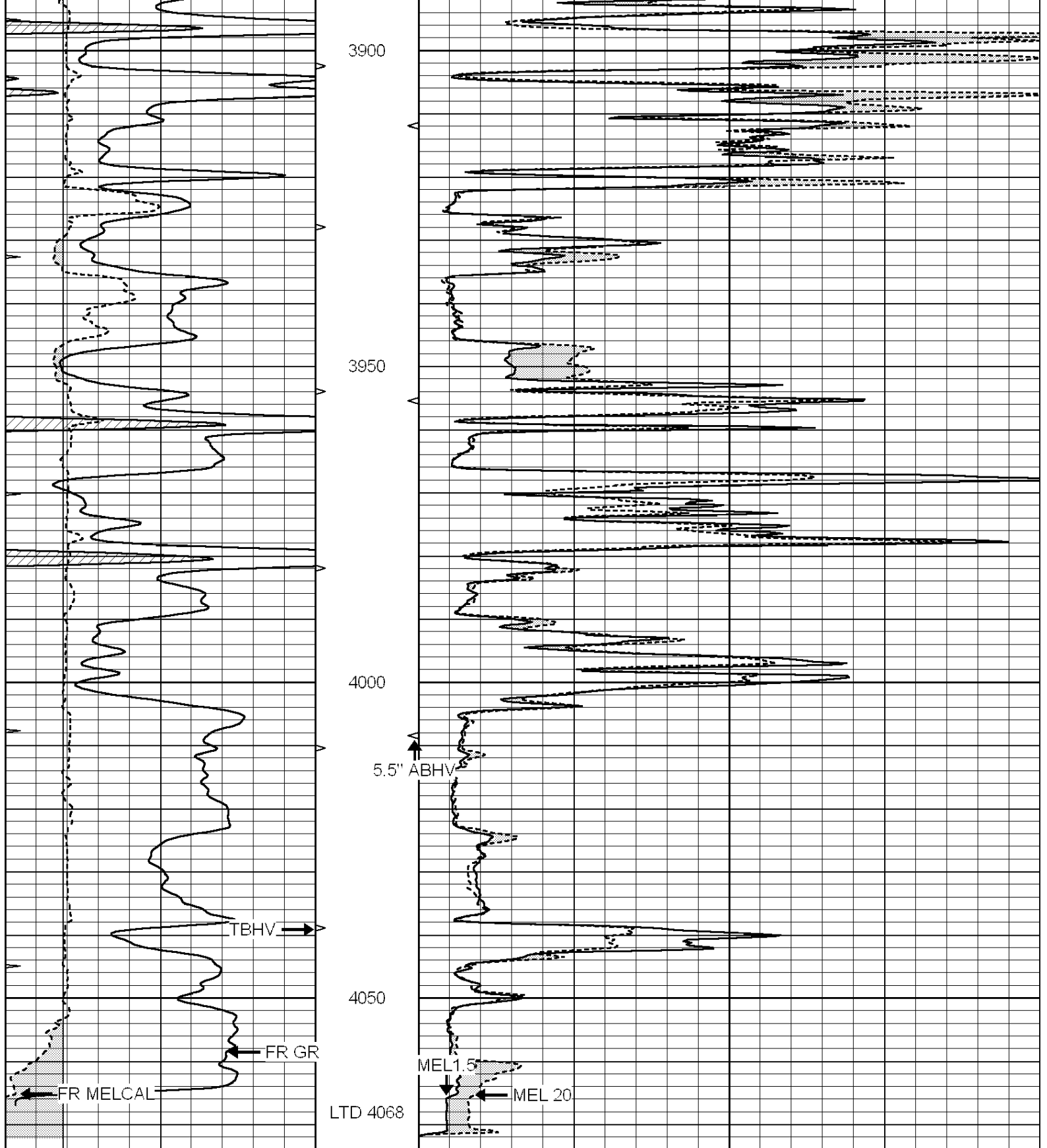
3700

3750

3800

3850





0	GAMMA RAY (GAPI)	150	ABHV	0	MEL1.5 (Ohm-m)	40
6	CALIPER (in)	16	10 (ft3)	0 0	MEL 20 (Ohm-m)	40
0	MINMK	20	TBHV			
			0 (ft3)	10		

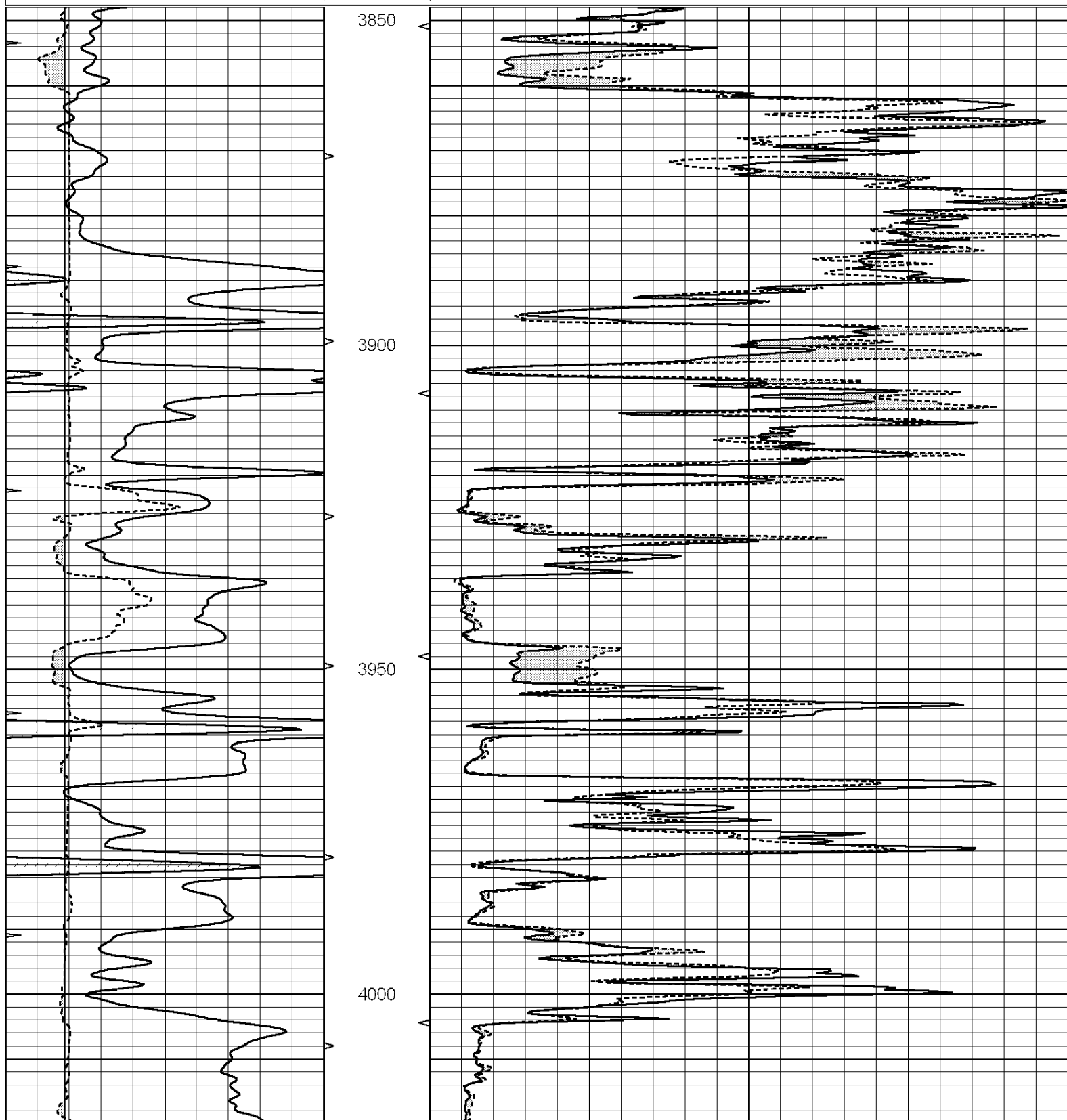


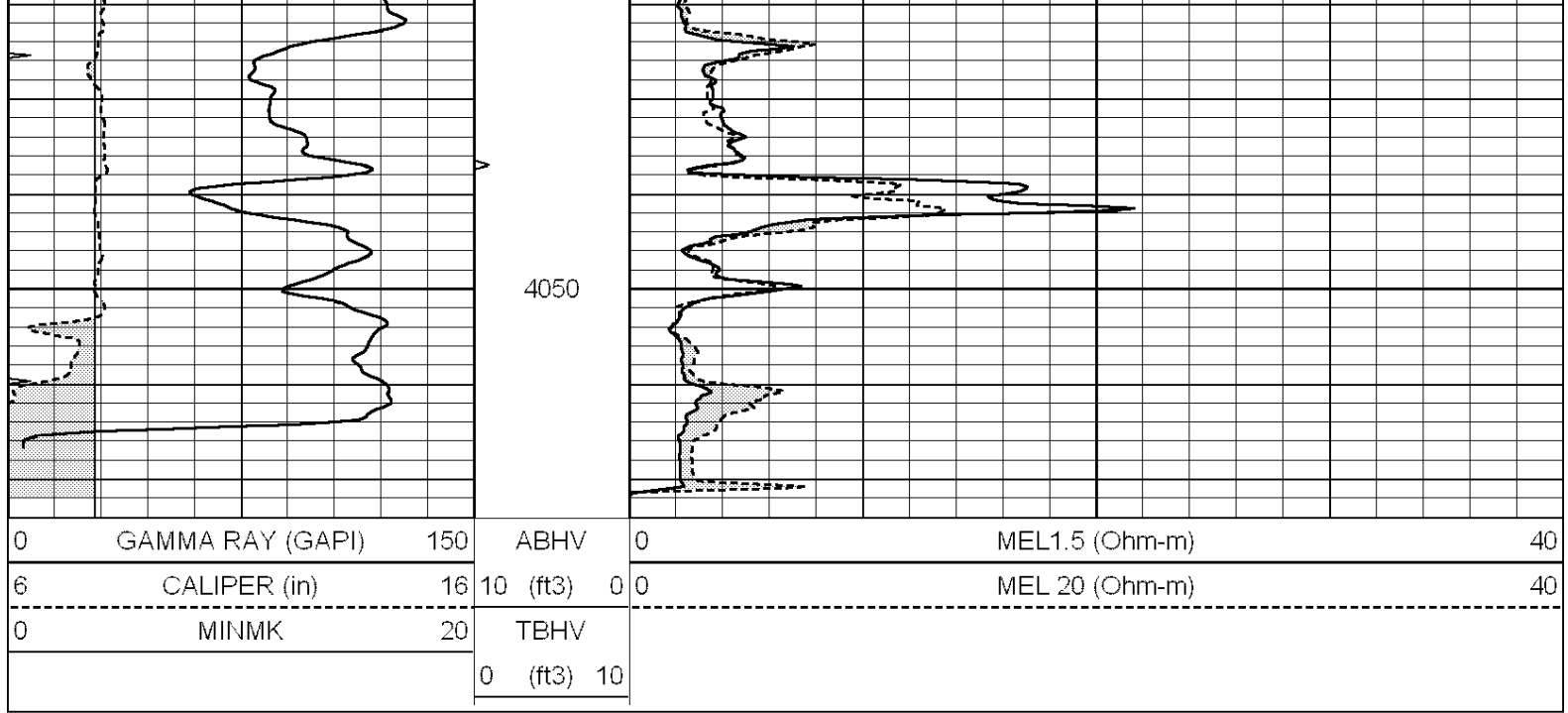
REPEAT SECTION

REFLECT SECTION

Database File: 3744pe.db
Dataset Pathname: pass6.2
Presentation Format: micro
Dataset Creation: Sun Jul 21 14:37:34 2019 by Calc SOC 120430
Charted by: Depth in Feet scaled 1:240

0	GAMMA RAY (GAPI)	150	ABHV	0	MEL1.5 (Ohm-m)	40
6	CALIPER (in)	16	10 (ft3)	0 0	MEL 20 (Ohm-m)	40
0	MINMK	20	TBHV			
			0 (ft3)	10		





Calibration Report

Database File: 3744pe.db
 Dataset Pathname: pass7.1
 Dataset Creation: Sun Jul 21 14:54:35 2019 by Calc SOC 120430

MICRO Calibration Report

Serial Number:	070911	
Tool Model:	ProbeN	
Performed:	Sun Jul 21 14:32:02 2019	
Caliper Calibration:	Gain=7.000	Offset=0.500
References	Low Cal	High Cal
Readings	7.500	18.000
	1.000	2.500
1.5" Calibration:	Gain=20.000	Offset=0.000
References	Low Cal	High Cal
Readings	0.000	20.000
	0.001	1.240
2" Calibration:	Gain=50.000	Offset=-1.700
References	Low Cal	High Cal
Readings	0.000	20.000
	0.001	1.076

Gamma Ray Calibration Report

Serial Number:	070559	
Tool Model:	OPEN_GR	
Performed:	Wed Jun 12 08:08:27 2019	
Calibrator Value:	1.0	GAPI
Background Reading:	0.0	cps
Calibrator Reading:	1.0	cps
Sensitivity:	0.2500	GAPI/cps