



**GAMMA RAY
CCL/RADIAL
CEMENT BOND
LOG**

Company JONES OIL EXPLORATION, LLC.
Well SOUTH BUTCHER # 16
Field PERU - SEDAN
County CHAUTAUQUA
State KANSAS

Company JONES OIL EXPLORATION, LLC.
Well SOUTH BUTCHER # 16
Field PERU - SEDAN
County CHAUTAUQUA
State KANSAS

Location: API #: 15-019-27666-0000
NE SE SE SE
456' FSL & 154' FEL
SEC 26 TWP 33S RGE 10E
Permanent Datum GL Elevation 995'
Log Measured From GL
Drilling Measured From GL
Other Services
Elevation
K.B. ...
D.F. ...
G.L. 995'

| | | | | | | | |
|-----------------|-----|------|----|--------|--------|------|-----|
| Run Number | Bit | From | To | Size | Weight | From | To |
| Borehole Record | | | | | | | |
| 1 | | | | 8 5/8" | | | |
| Tubing Record | | | | | | | |
| 1 | | | | | | | 40" |
| 2 | | | | 4.5" | | | TD |

<<< Fold Here >>>

All interpretations are opinions based on inferences from electrical or other measurements and we cannot and do not guarantee the accuracy or correctness of any interpretation, and we shall not, except in the case of gross or willful negligence on our part, be liable or responsible for any loss, costs, damages, or expenses incurred or sustained by anyone resulting from any interpretation made by any of our officers, agents or employees. These interpretations are also subject to our general terms and conditions set out in our current Price Schedule.

Comments

FILE # 5518-OE3RBL JONES OIL EXPLORATION, LLC. SOUTH BUTCHER # 16
THANK YOU FOR USING OSAGE WIRELINE!



GR/CCL/VDL

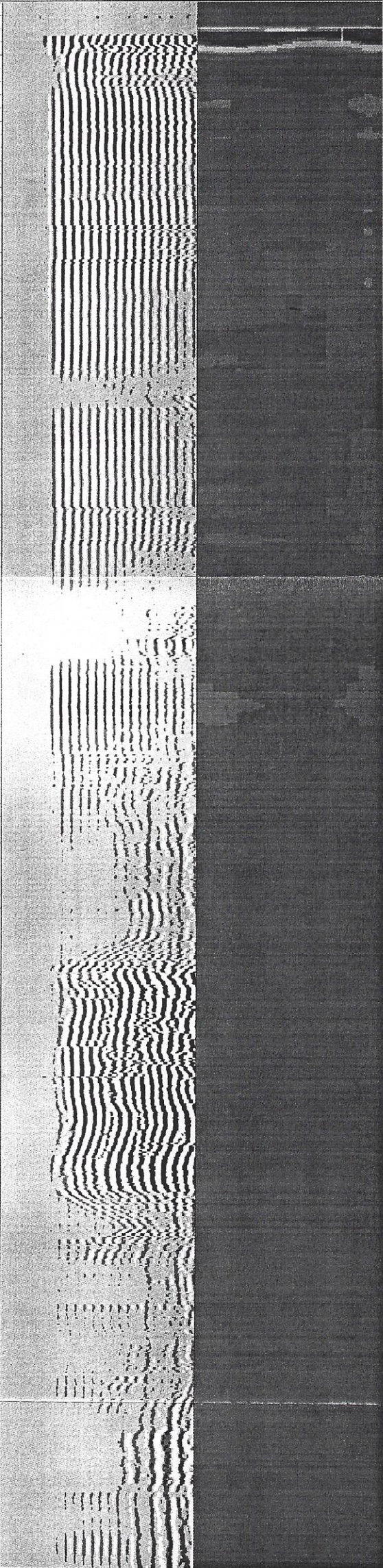
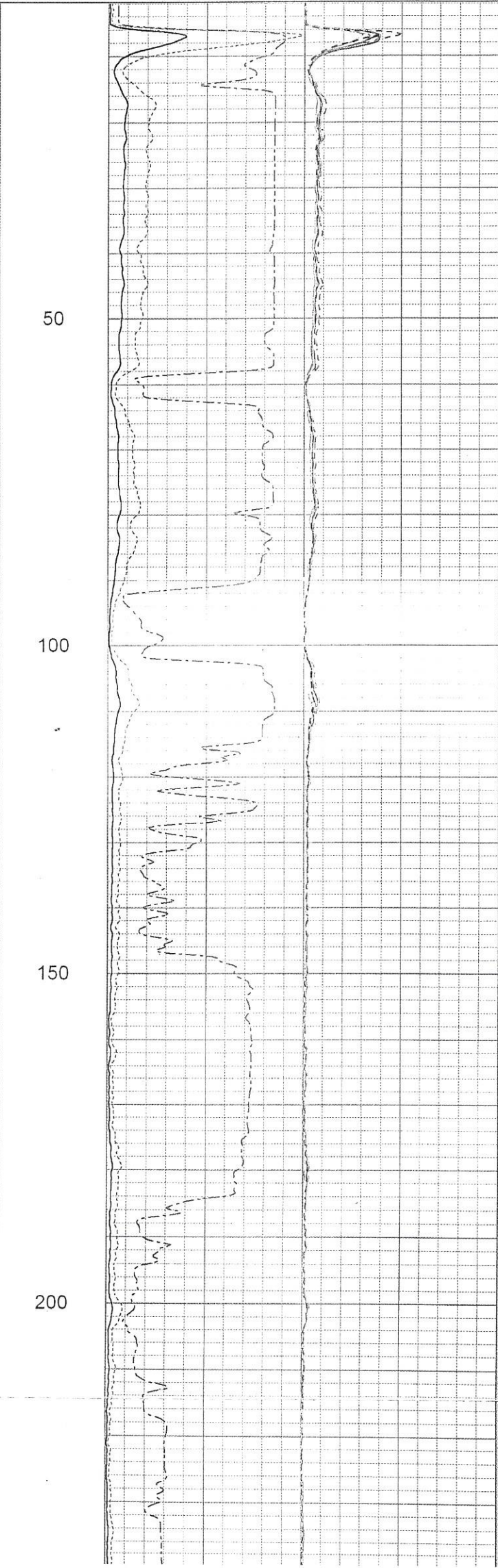
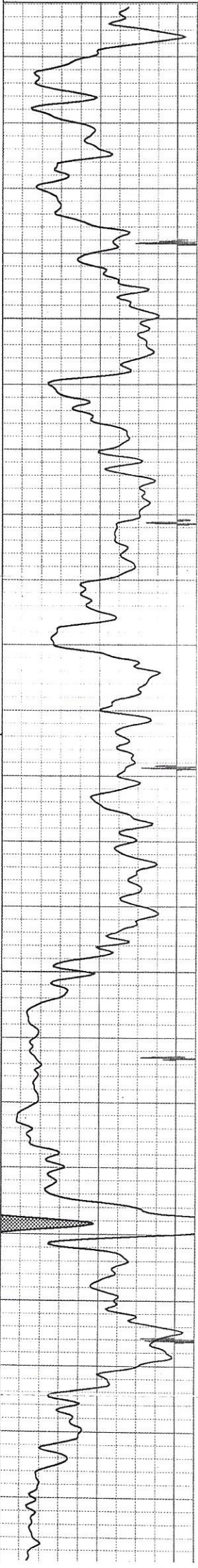
Database File 5518-ow3rbl jones oil south butcher 16.db
Dataset Pathname pass1
Presentation Format 0w4 crbt
Dataset Creation Mon Aug 19 09:40:27 2019
Charted by Depth in Feet scaled 1:240

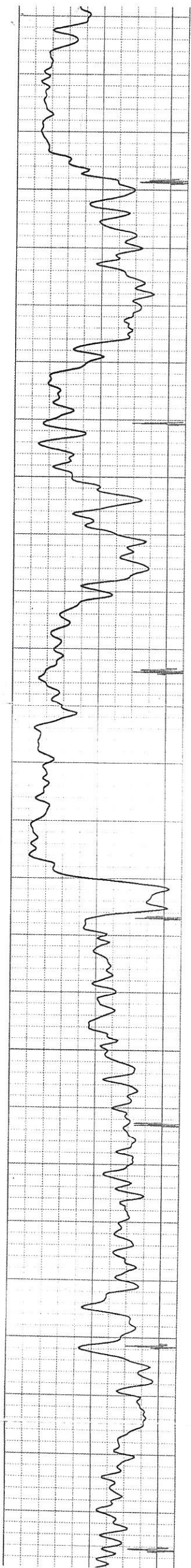
| | | | | | | | | | |
|----|-------------------|--------------|-----|----------|-----|------------------|-----|------------|---|
| 40 | Casing Collar-4.5 | Pipe Bond | 0 | Sector 1 | 100 | Variable Density | 1 | Radial Map | 8 |
| | Gamma Ray | (mV) | 100 | Sector 2 | 100 | (usec) | 200 | | |
| | (GAPI) | Pipe Bond x5 | 0 | Sector 3 | 100 | | | | |
| 0 | 150 | (mV) | 40 | Sector 4 | 100 | | | | |
| | | Travel Time | 0 | Sector 5 | 100 | | | | |
| | | (usec) | 220 | Sector 6 | 100 | | | | |

Gallina Ray
0 (GAPI) 150

| | | | | | |
|------|--------------|-----|---|----------|-----|
| 0 | (mV) | 100 | 0 | Sector 2 | 100 |
| 0 | Pipe Bond x5 | 0 | 0 | Sector 3 | 100 |
| 0 | (mV) | 40 | 0 | Sector 4 | 100 |
| 0 | Travel Time | 0 | 0 | Sector 5 | 100 |
| 1000 | (usec) | 220 | 0 | Sector 6 | 100 |
| | | | 0 | Sector 7 | 100 |
| | | | 0 | Sector 8 | 100 |

200 (usec) 1200





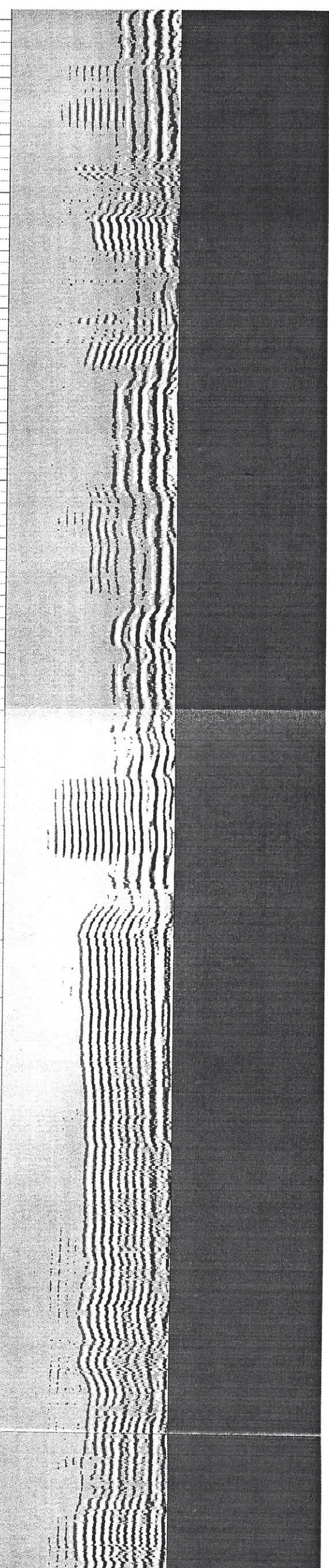
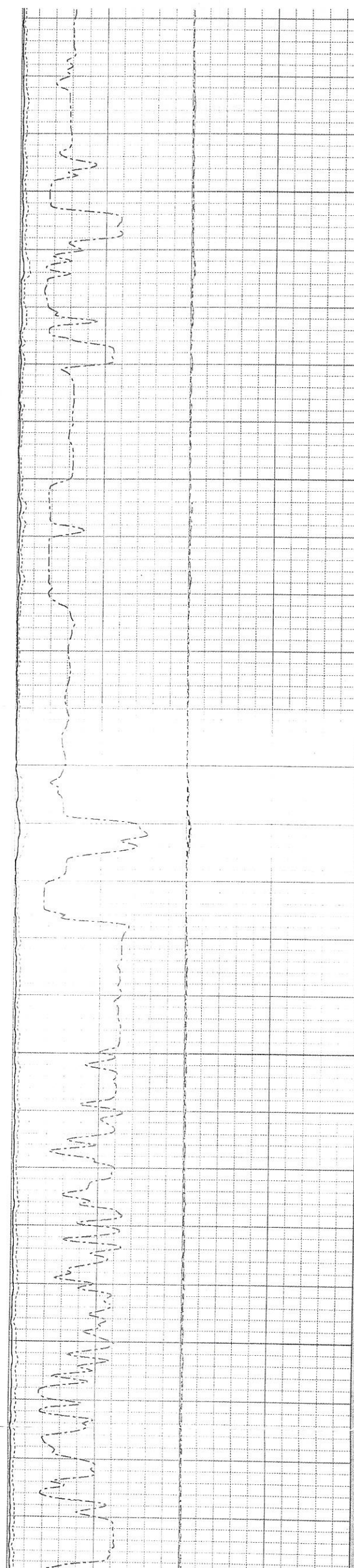
250

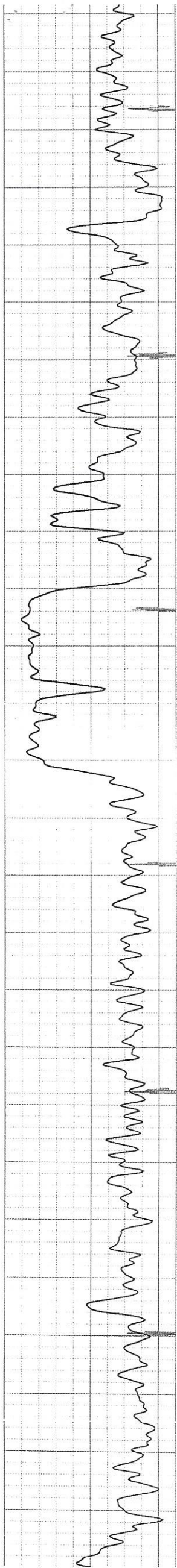
300

350

400

450





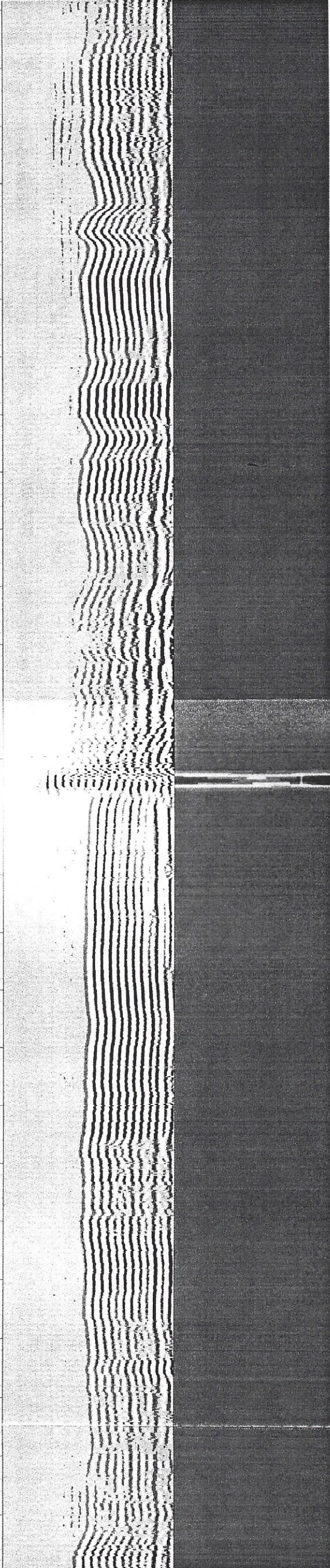
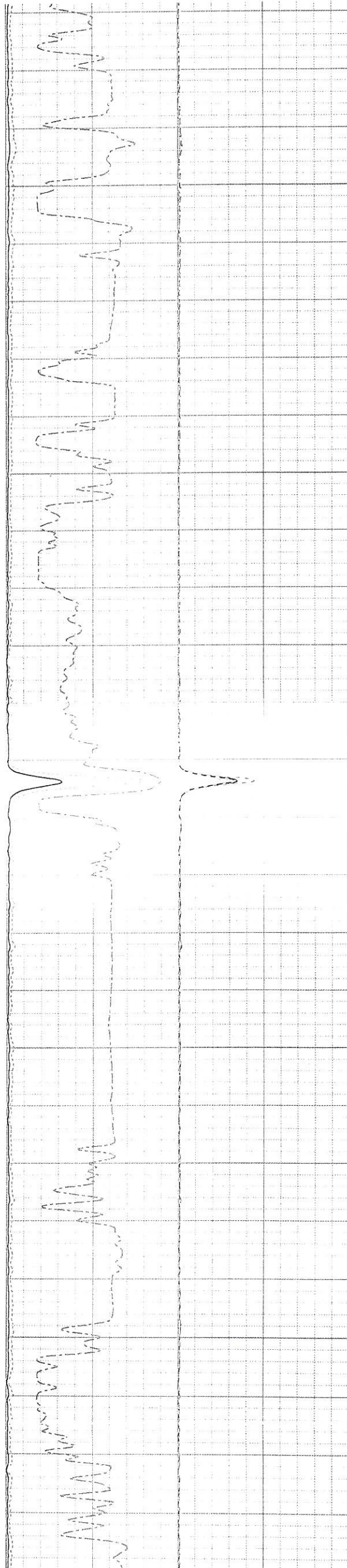
500

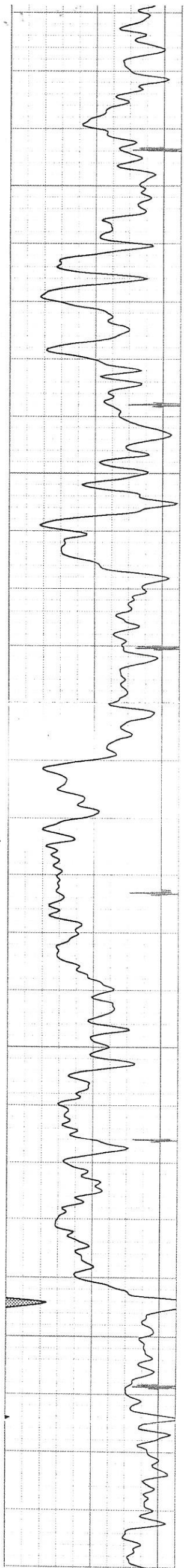
550

600

650

700





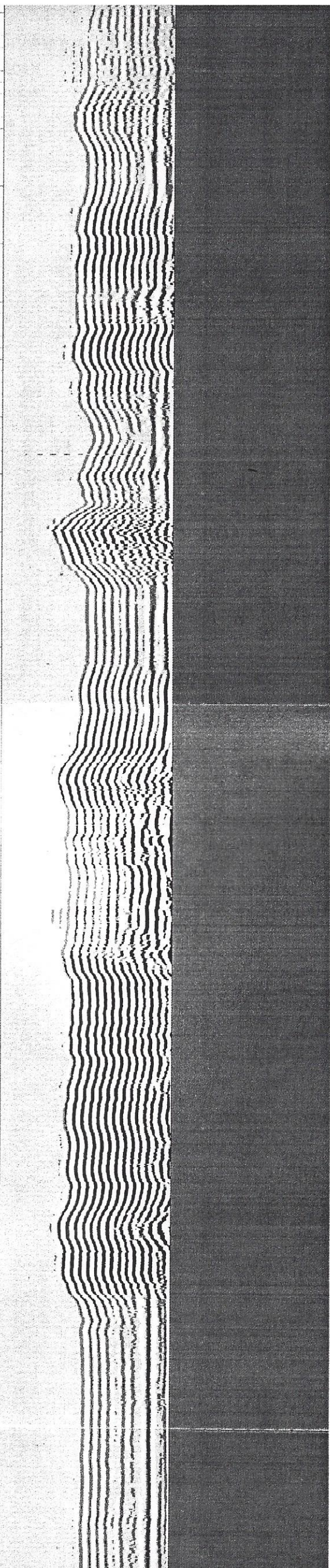
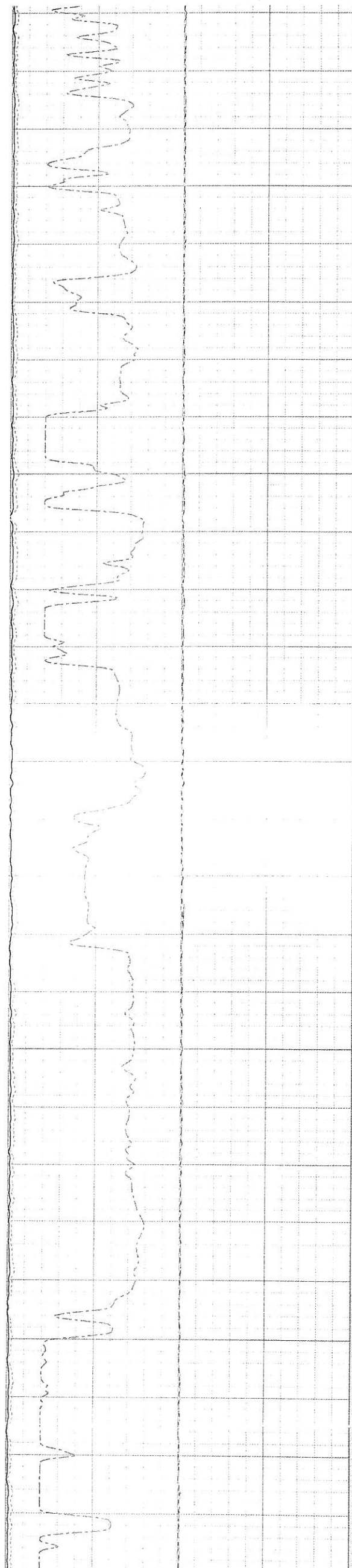
750

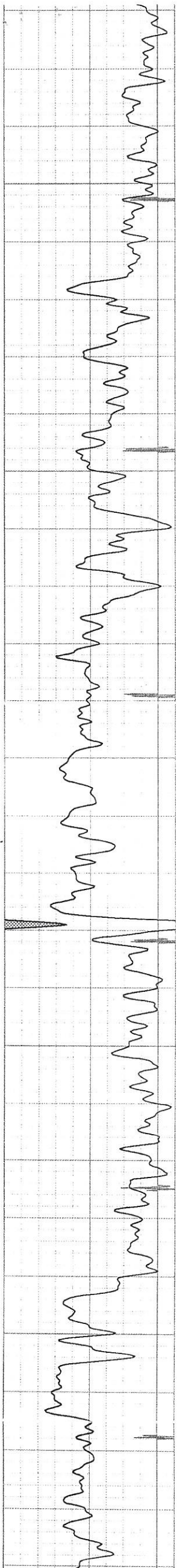
800

850

900

950





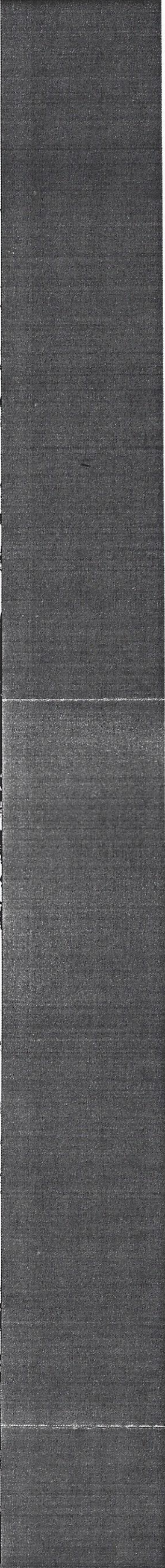
1000

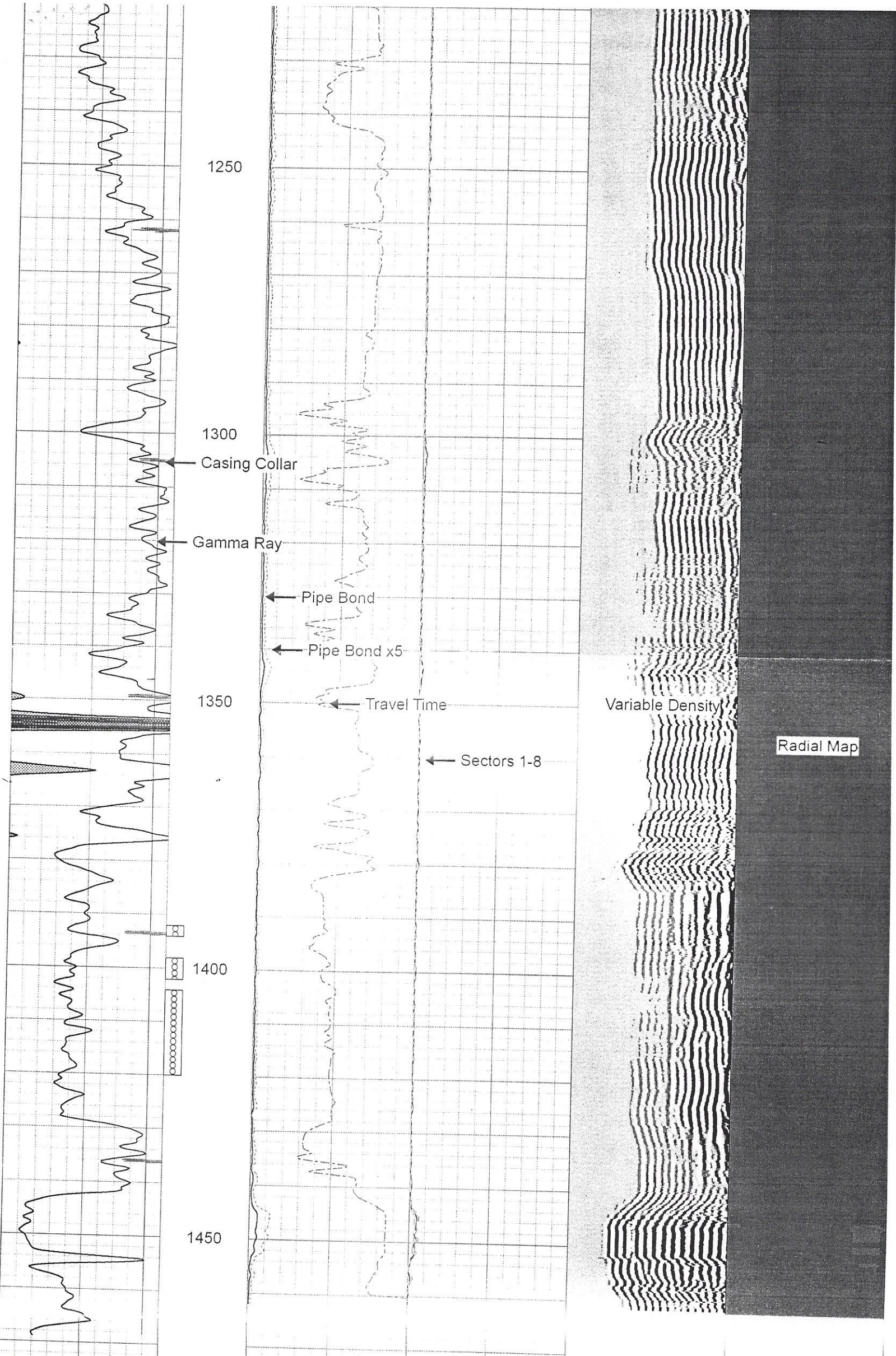
1050

1100

1150

1200





1250

1300

1350

1400

1450

Casing Collar

Gamma Ray

Pipe Bond

Pipe Bond x5

Travel Time

Sectors 1-8

Variable Density

Radial Map

| | |
|----|----------------------|
| 40 | Casing Collar-4.5 |
| 0 | Gamma Ray (GAPI) 150 |

| | | | |
|---|----------------------|---|--------------|
| 0 | Pipe Bond (mV) 100 | 0 | Sector 1 100 |
| 0 | Pipe Bond x5 (mV) 40 | 0 | Sector 2 100 |
| 0 | | 0 | Sector 3 100 |
| 0 | | 0 | Sector 4 100 |

| | |
|-----|------------------------------|
| 200 | Variable Density (usec) 1200 |
|-----|------------------------------|

| | | |
|---|------------|---|
| 1 | Radial Map | 8 |
|---|------------|---|