

STEP

energy services

MICRO LOG

Company TRANS PACIFIC OIL CORPORATION
Well FLAX A #1-16
Field RANSOM NORTHWEST
Country NESS
State KANSAS
Country USA
API No. 15-135-26082-00-00

File No : HAYS-70363
Company : TRANS PACIFIC OIL CORPORATION
Well : FLAX A #1-16
Field : RANSOM NORTHWEST
Country : NESS
State : KANSAS
Country : USA
API No : 15-135-26082-00-00

Location :
 2310' FNL & 2970' FEL
 SE SE NW

LSD : **Sect** : 16 **Twp** : 16S **Rge** : 24W

Permanent Datum: GL **Elevations:** KB 2537.00 Ft GRT MLT
Drilling Measured From: KB DF 2535.00 Ft CNT PIT
Log Measured From: KB GL 2530.00 Ft LDT
Above Permanent Datum: 7.00 Ft

Date	10-01-2019	
Run Number	1	
Depth--Driller	4610.0	Ft
Depth--Logger	4604.0	Ft
First Reading	4581.0	Ft
Last Reading	3600.0	Ft
Casing--Driller	264.0	Ft
Casing--Logger	264.0	Ft
Bit Size	7.875	in
Casing Size	8.625	in
Hole Fluid Type	WBM	
Density	9.4	lb/gal
Fluid Loss	8.0	ml/30min
PH/Viscosity	10.0	60.0 sec
Sample Source	MEASURED	
RM@Measured Temp.	0.700	@ 75 F
RMF@Measured Temp	0.600	@ 75 F
RMG@Measured Temp.	0.810	@ 75 F
Source RMF/RMC	CALCULATED/CALCULATED	
RM@BHT	0.450	@ 120 F
Time Circulation Stopped		
Max Recorded Temp.	120	F
Equipment/Base	TRK 137	HAYS
Recorded By	R. FRANKLIN	
Witnessed By	N. HIXON	

The customer is hereby warned that by providing the log data herein, STEP Energy Services does not agree to provide any interpretation of log data, conversion of log data to physical rock parameters or recommendations. STEP Energy Services does not guarantee or warrant either expressly or impliedly, the accuracy of any interpretation of log data, conversion of log data to physical rock parameters or recommendations which may be given by STEP Energy Services personnel. Any interpretation, conversion or recommendation is not part of the consideration for the agreement between the parties and is not part of any part of the charge by STEP Energy Services for its services. Any user of the log data is warned that said user is not entitled to rely on interpretations, conversions or recommendations as aforesaid.

Bitsize Intervals		Casing Strings			
Size (In)	Bottom (Ft)	Size (In)	Weight (Lbs)	Bottom (Ft)	Top (Ft)
7.875	4604.00	8.625	0.00	264.00	0.00

Run Number	1	
Date	10-01-2019	
Date/Time On Bottom	10-01-2019 13:15	
Depth to Fluid	0.0	Ft
Salinity	3100.000	ppm
RMF@BHT	0.380	@ 120 F
RMC@BHT	0.520	@ 120 F

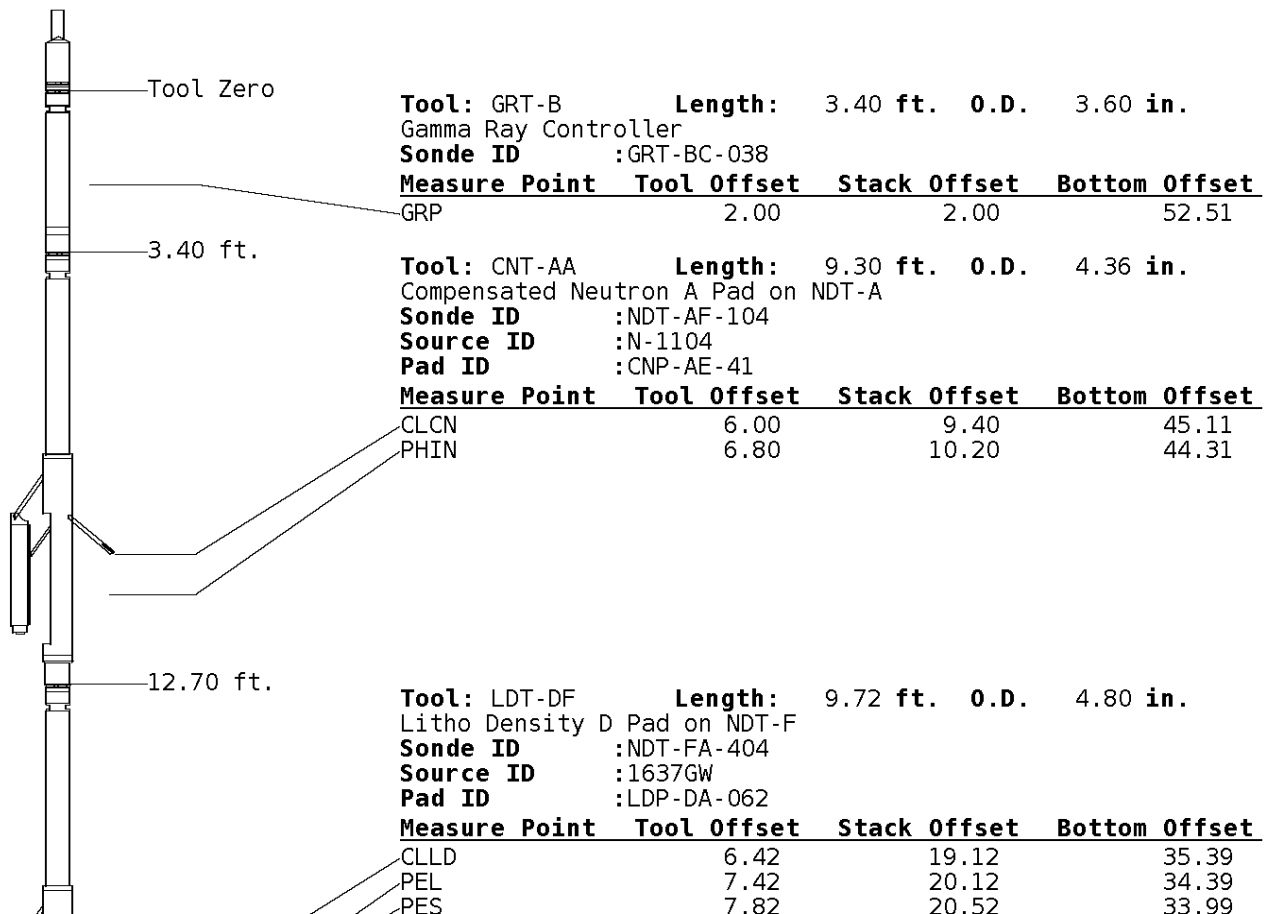
ALL PRESENTATION PER CUSTOMER REQUEST
 GRT,CNT,LDT,MLT,PIT RUN IN COMBINATION
 CALIPERS ORIENTED ON X-Y AXIS
 2.71 G/CC USED TO CALCULATE POROSITY
 ANNULAR & BOREHOLE VOLUME CALCULATED USING 5.5 PRODUCTION CASING
 PHIN IS CALIPER CORRECTED
 DETAIL IS PRESENTED FROM TD TO SCG
 ANHYRITE DETAIL PRESENTED FROM 1950' TO 1850'

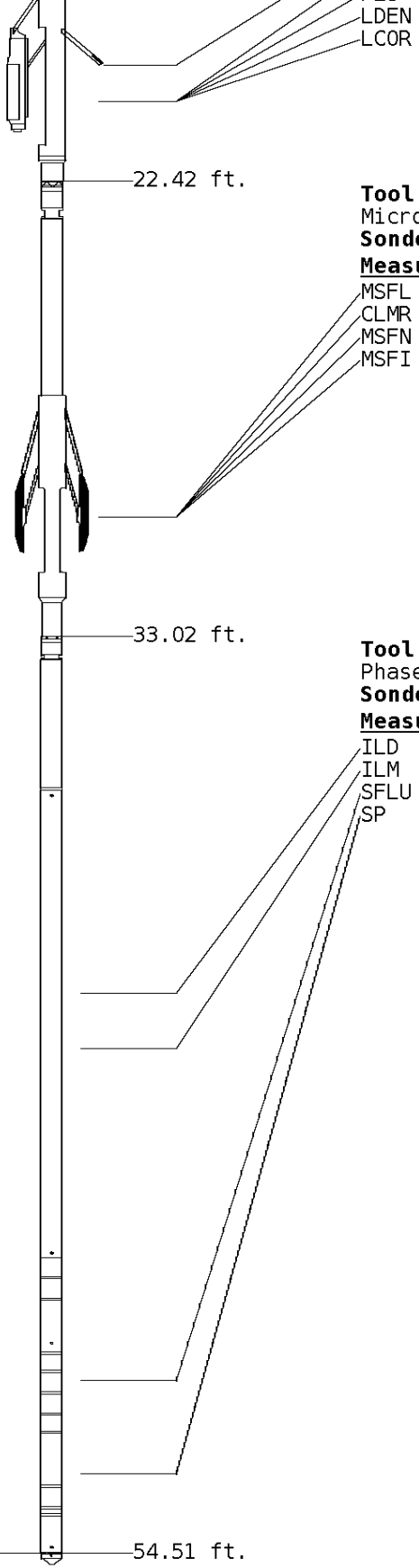
GRT; GRP,
 CNT; PHIN, CLCNIN
 LDT; PORL, LCORN, PECLN, LDENN, CLLDIN
 MLT; NOR_RF, INV_RF, MSCLPIN.
 PIT; ILD, ILM, SPU, SFLAEC, CIRD

OPERATORS;
 D. LEGLEITER
 D. RAGSDALE
 J. VAUGHN
 R. NITZ

Tool String Schematic

Total Tool Length - 54.51 ft.
Maximum Outside diameter - 6.00 in.
Net Weight in Air - 943.00 lbs.





LDEN 7.62 20.32 34.19
 LCMR 7.62 20.32 34.19

Tool: MLT-AB **Length:** 10.60 ft. **O.D.** 6.00 in.
 Micro Log Tool
Sonde ID :MLT-012

Measure Point	Tool Offset	Stack Offset	Bottom Offset
MSFL	8.90	31.32	23.19
CLMR	7.60	30.02	24.49
MSFN	8.90	31.32	23.19
MSFI	8.90	31.32	23.19

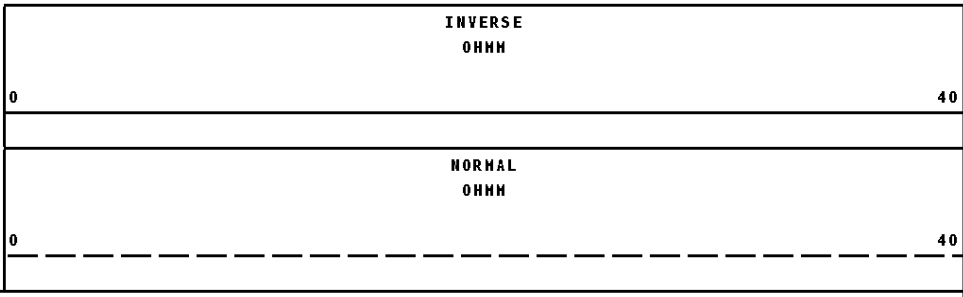
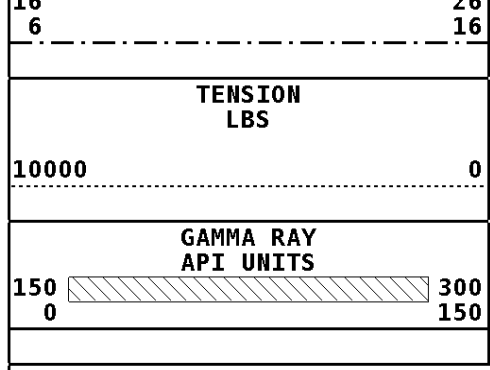
Tool: PIT-CA **Length:** 21.49 ft. **O.D.** 3.62 in.
 Phased Dual Induction w/ RM & D
Sonde ID :PIT-AC-043

Measure Point	Tool Offset	Stack Offset	Bottom Offset
ILD	8.92	41.94	12.56
ILM	10.10	43.12	11.39
SFLU	17.49	50.51	4.00
SP	20.60	53.62	0.88

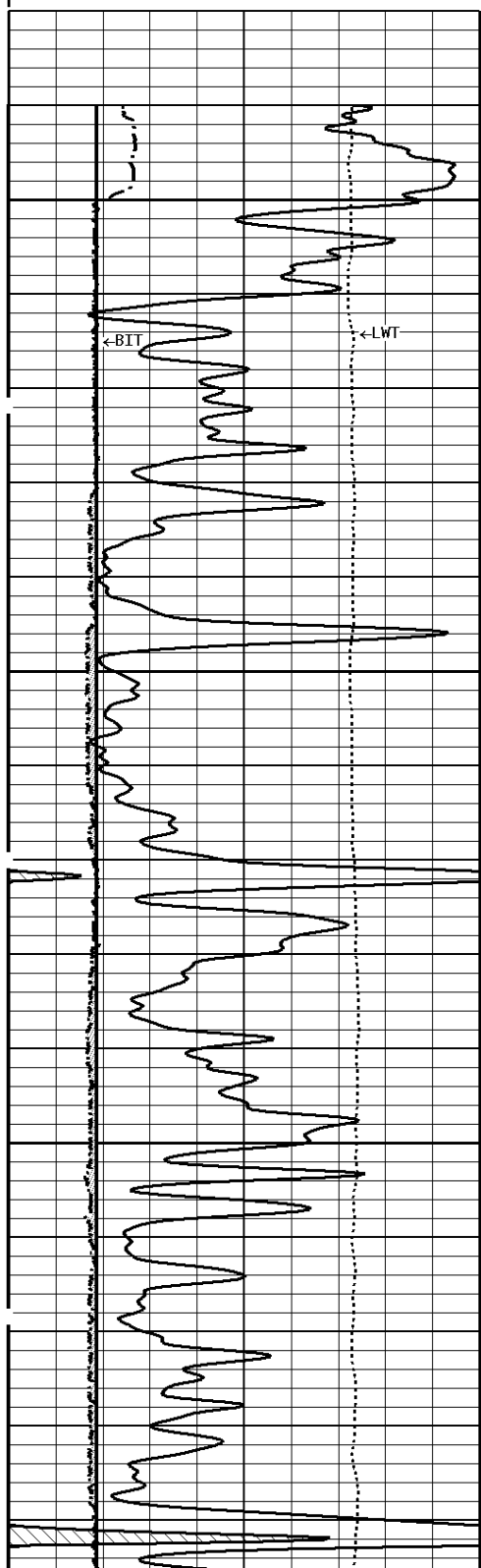
Well File: TRANS-PACIFIC FLAX A 1-16 OCT 1 MSTK **Scale:** 1:240 **Format:** MST-240
Segment: V1.D1.S6 MAIN **Acquired:** 2019-10/01 13:25 3.4.1-13972
Reference: 0 **Processed:** 2019-10/01 14:46 3.4.1-13972

BIT SIZE INCHES (IN)	
6	16

CALIPER MICRO INCHES (IN)	
16	26

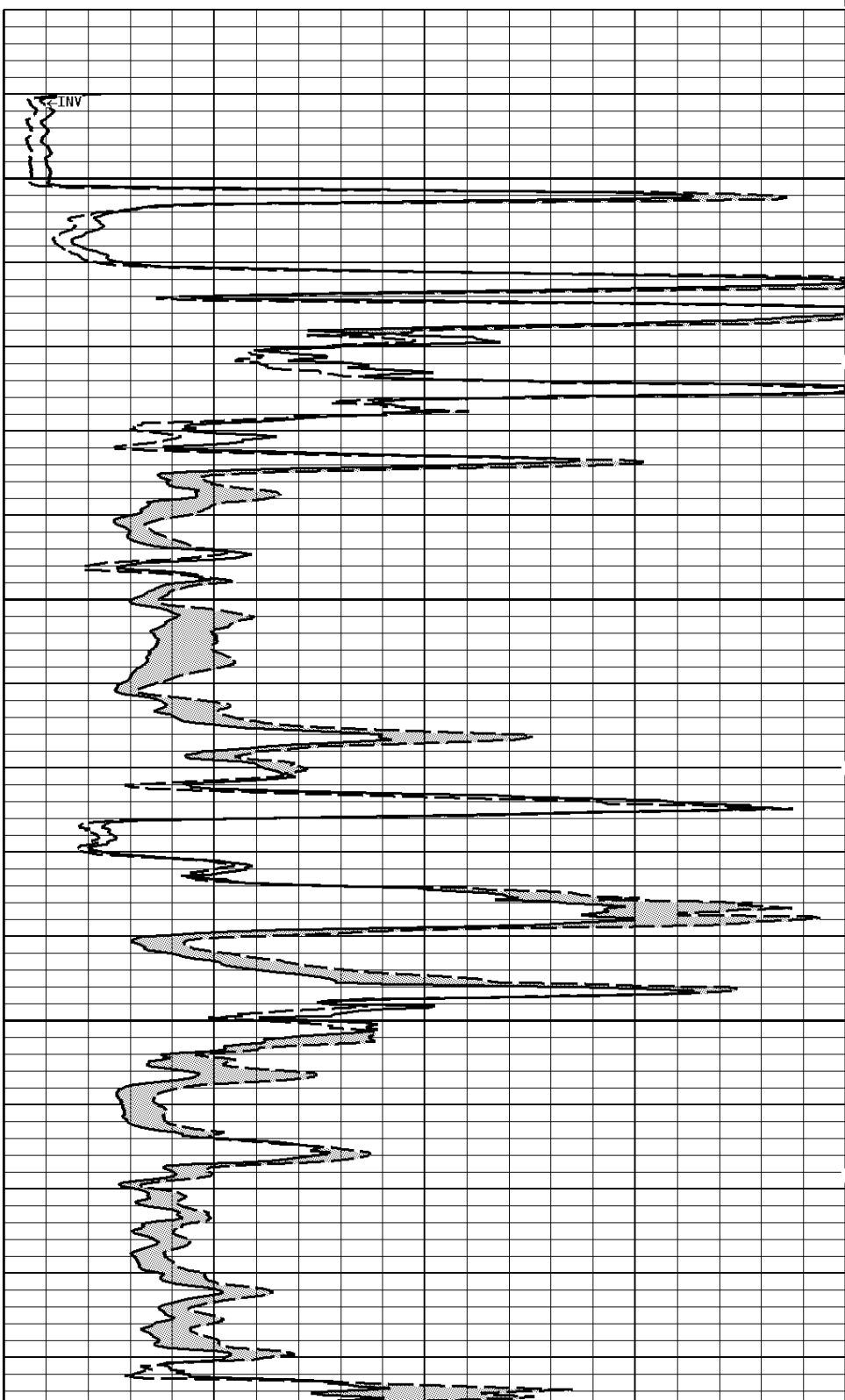


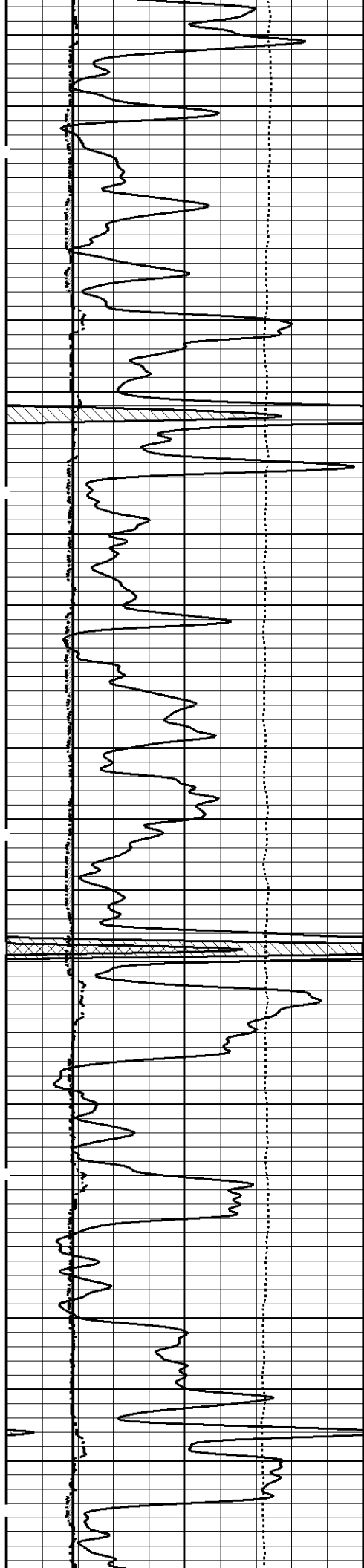
1:240 MAIN SECTION



3600

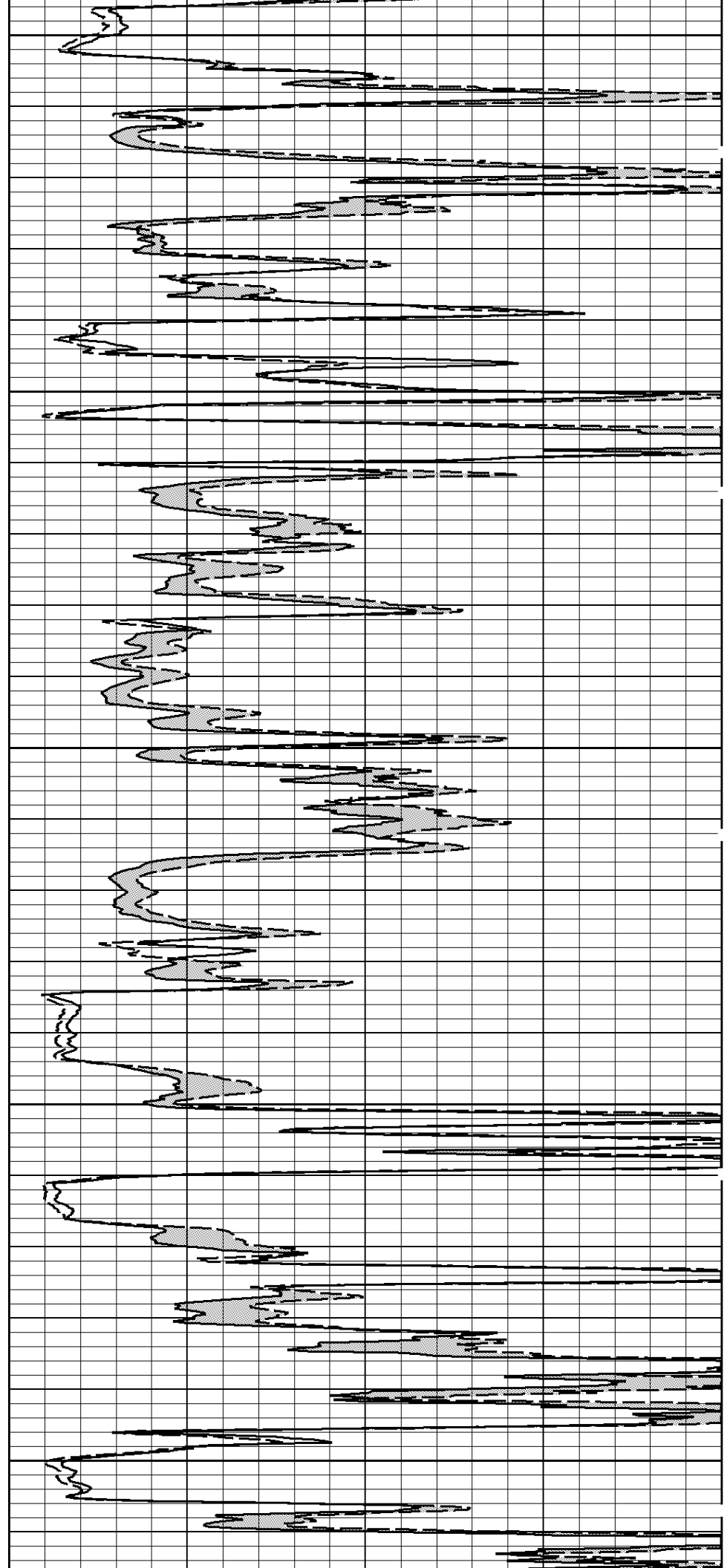
3700

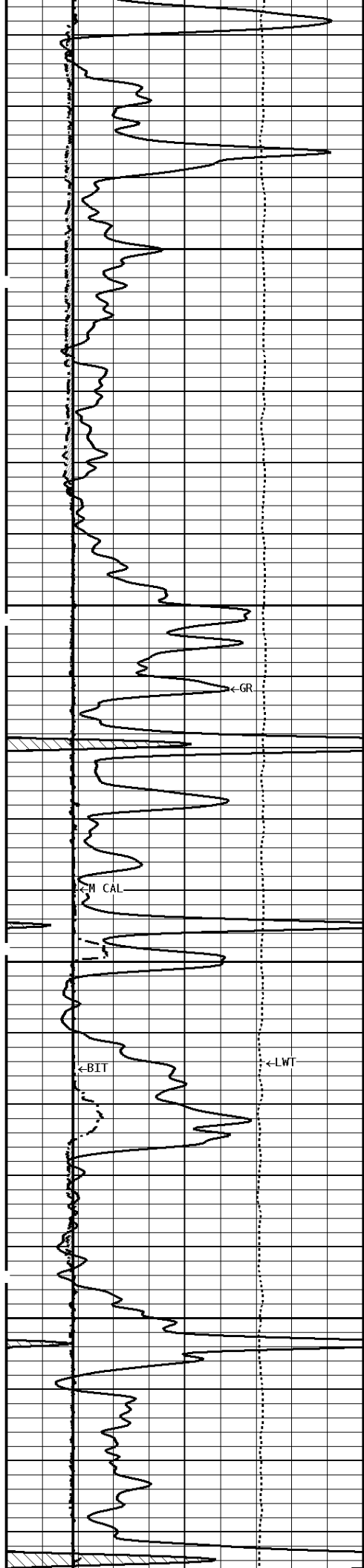




3800

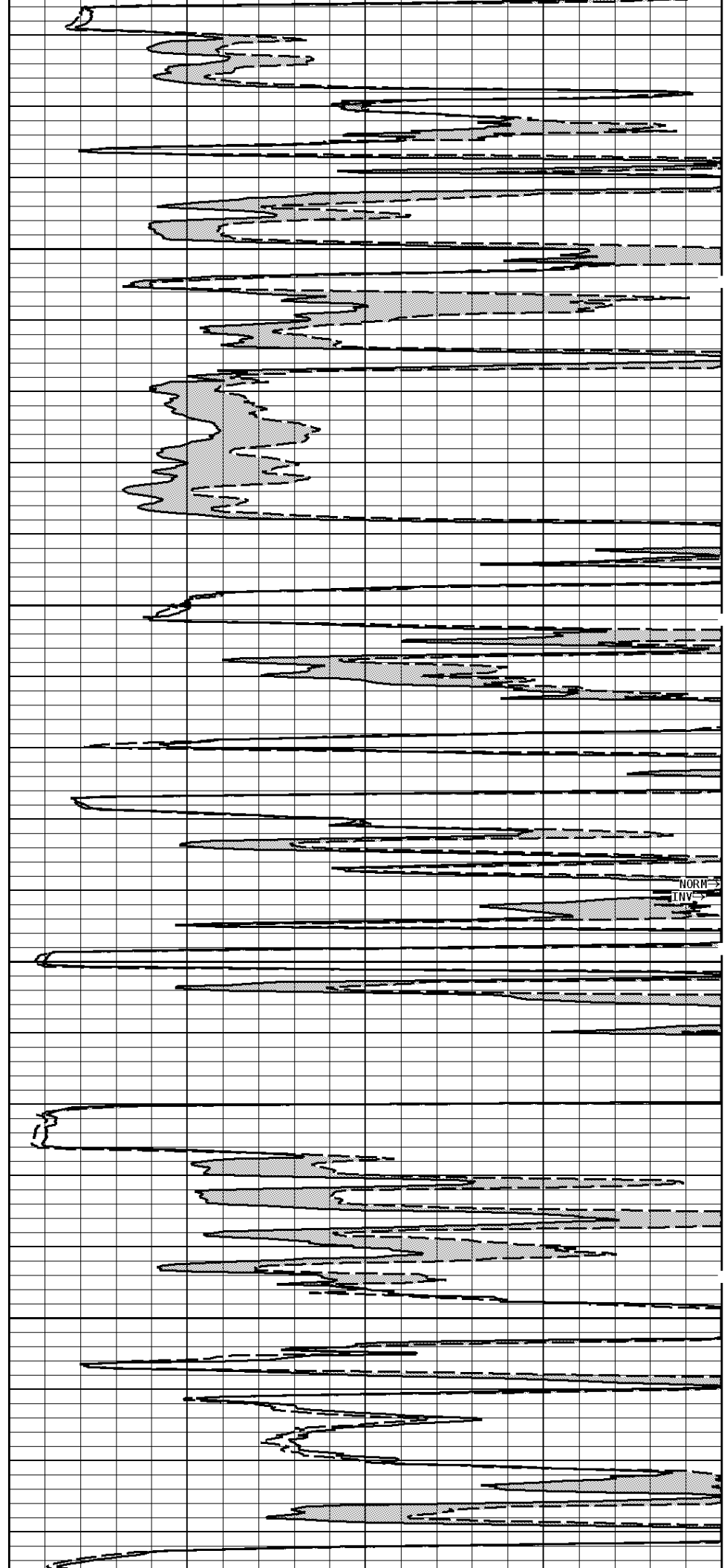
3900



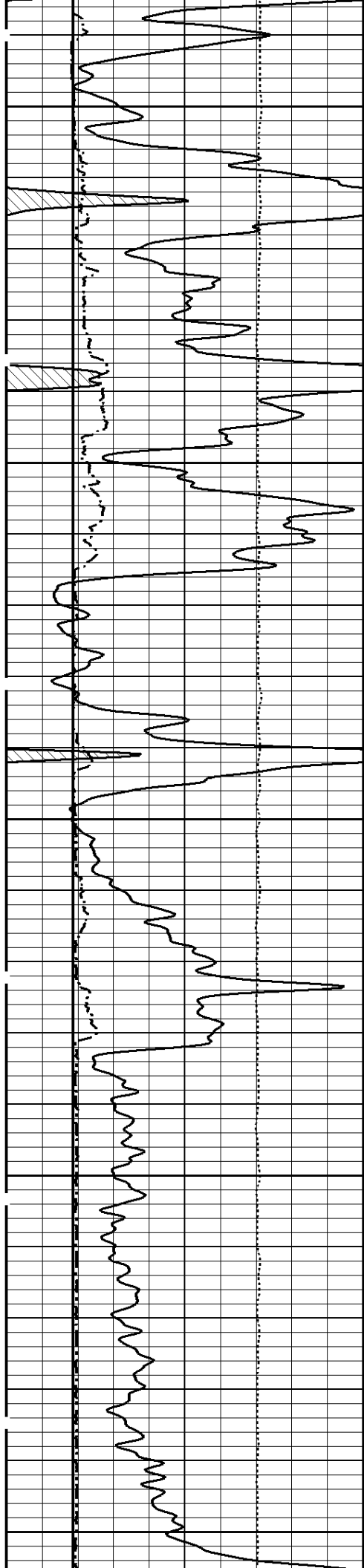


4000

4100



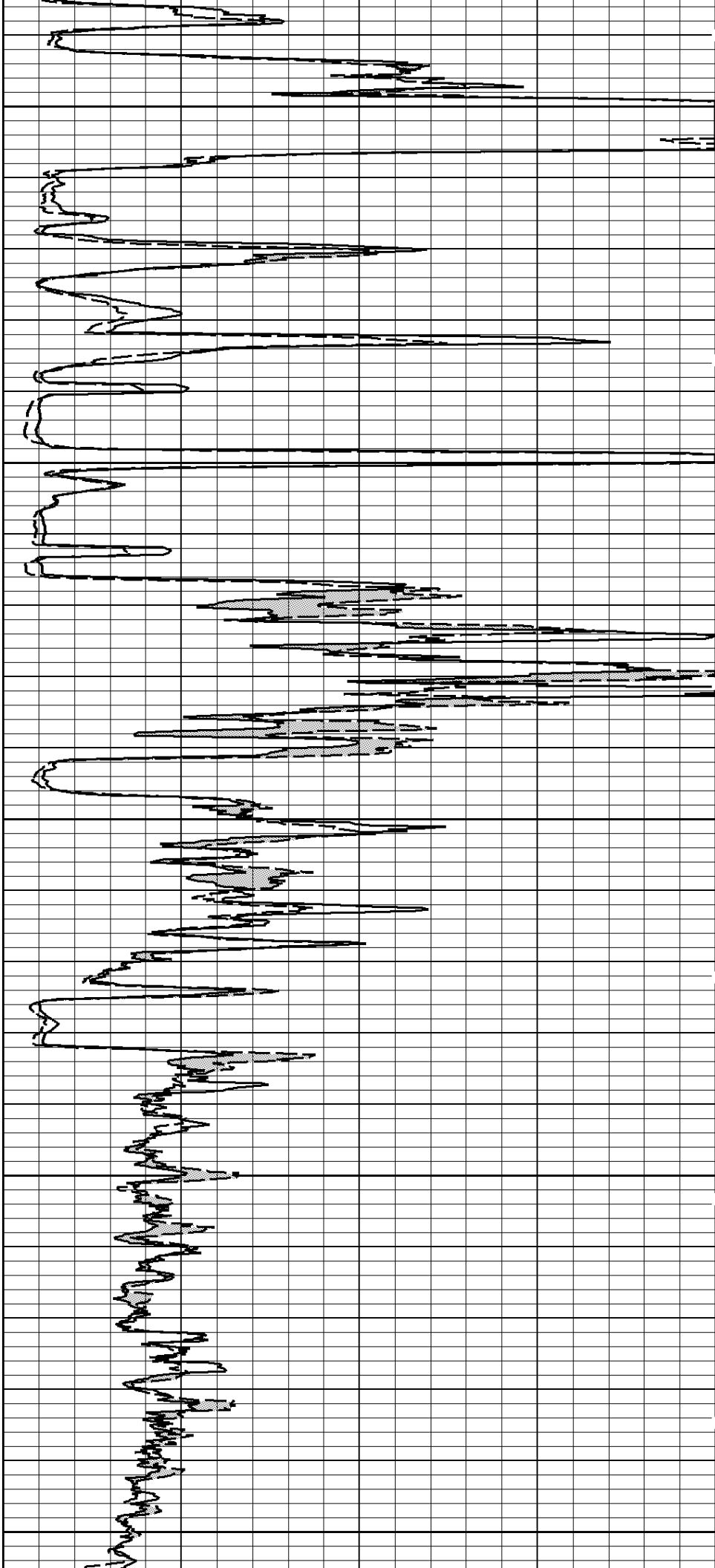
NORM
INV

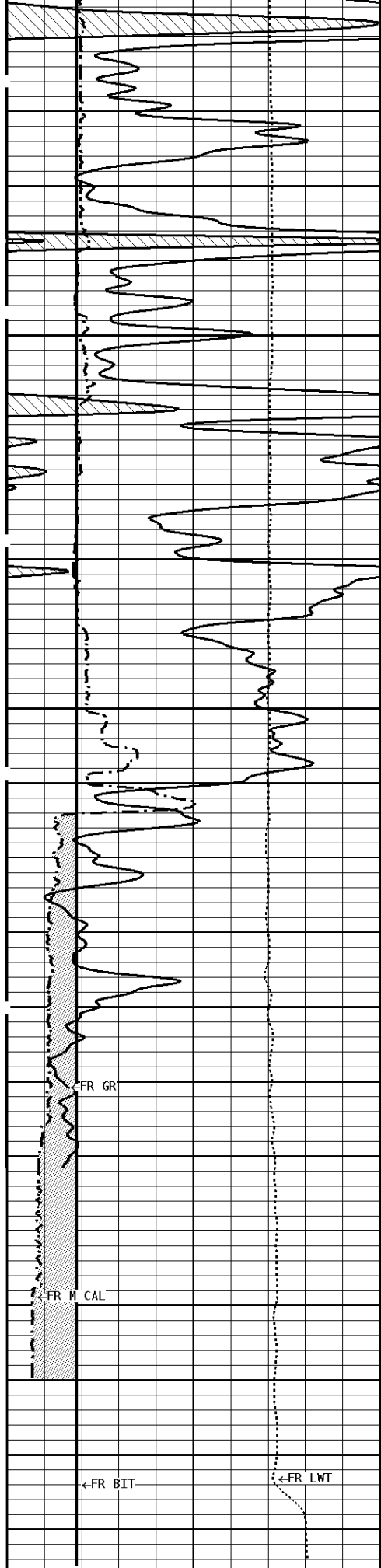


4200

4300

4400

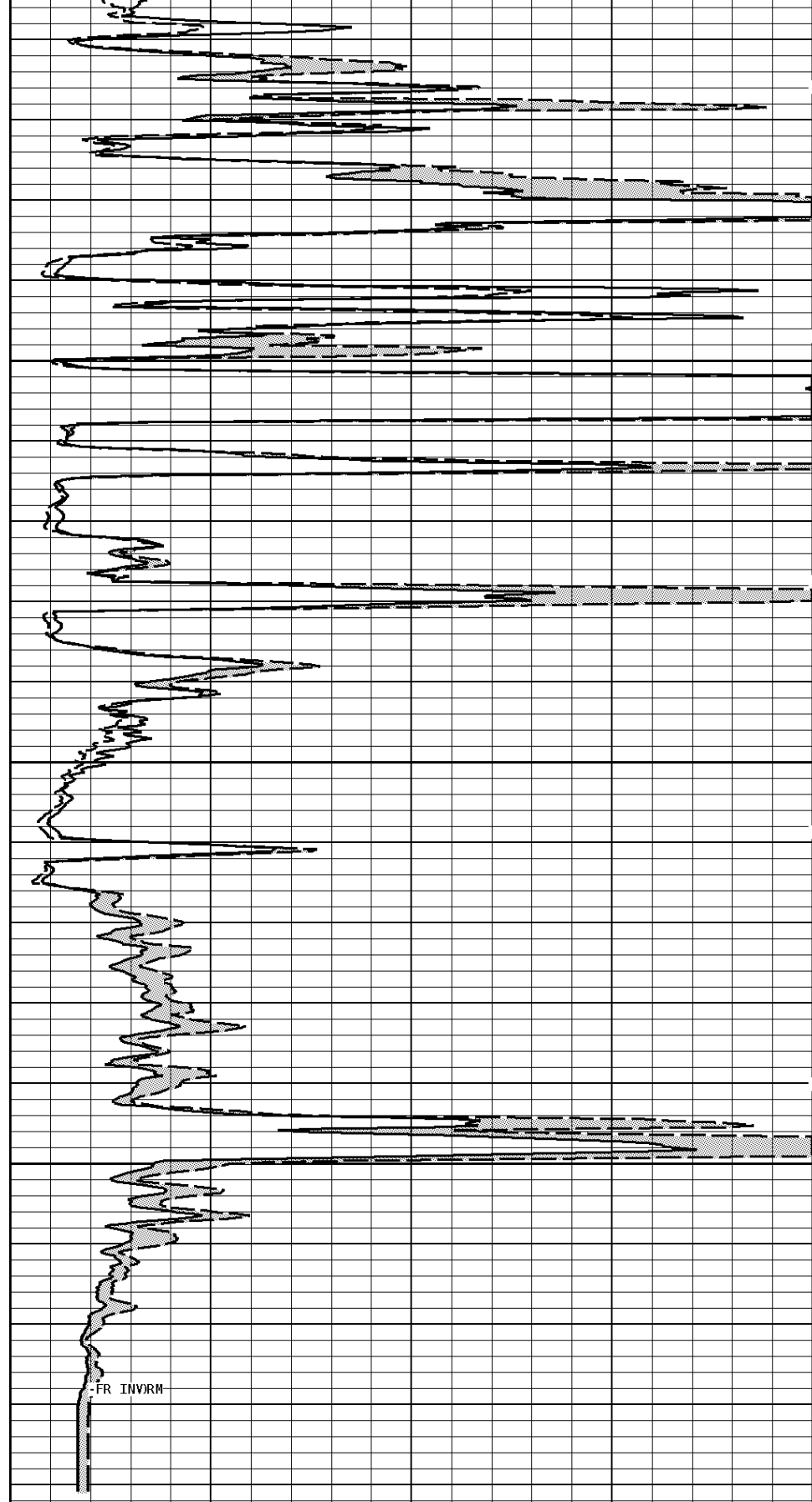




4500

4600

4604



←FR INVRM

File #1.1.6

1:240 MAIN SECTION

GAMMA RAY API UNITS	
150 0	300 150
TENSION LBS	
10000	0
CALIPER MICRO INCHES (IN)	
16 6	26 16
BIT SIZE INCHES (IN)	
6	16

NORMAL OHMM	
0	40
INVERSE OHMM	
0	40

* Borehole Zone Factors *

Zone 1	99999.0	to	0.0	Feet
Drill Bit Size _____		7.875 in		

Well File: TRANS-PACIFIC FLAX A 1-16 OCT 1 MSTK	Scale: 1:240	Format: MST-240
Segment: V1.D1.S7 REPEAT	Acquired: 2019-10/01 13:08 3.4.1-13972	
Reference: 0	Processed: 2019-10/01 14:45 3.4.1-13972	

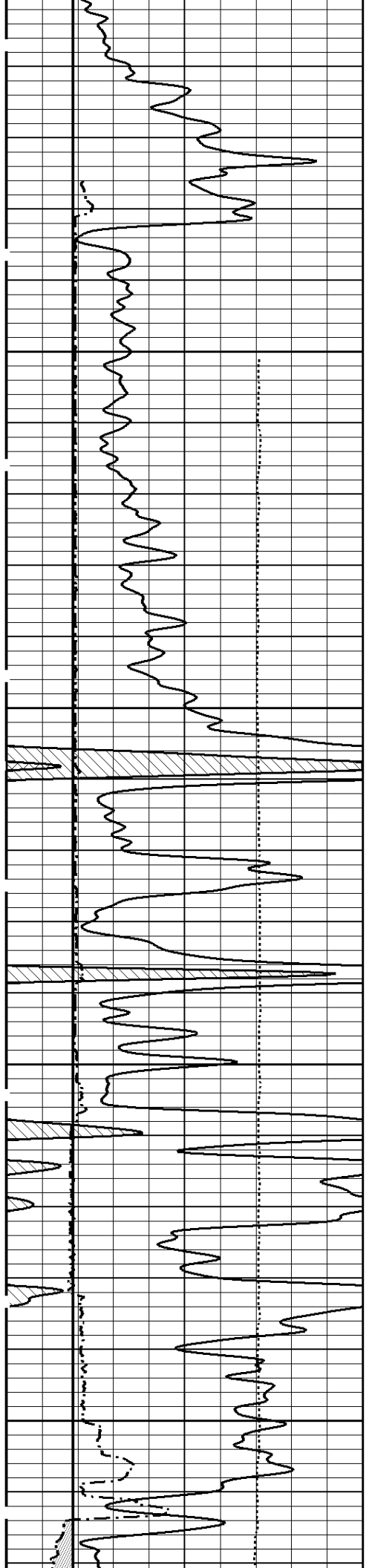
BIT SIZE INCHES (IN)	
6	16
CALIPER MICRO INCHES (IN)	
16 6	26 16
TENSION LBS	
10000	0
GAMMA RAY API UNITS	
150 0	300 150

INVERSE OHMM	
0	40
NORMAL OHMM	
0	40

1:240 REPEAT SECTION

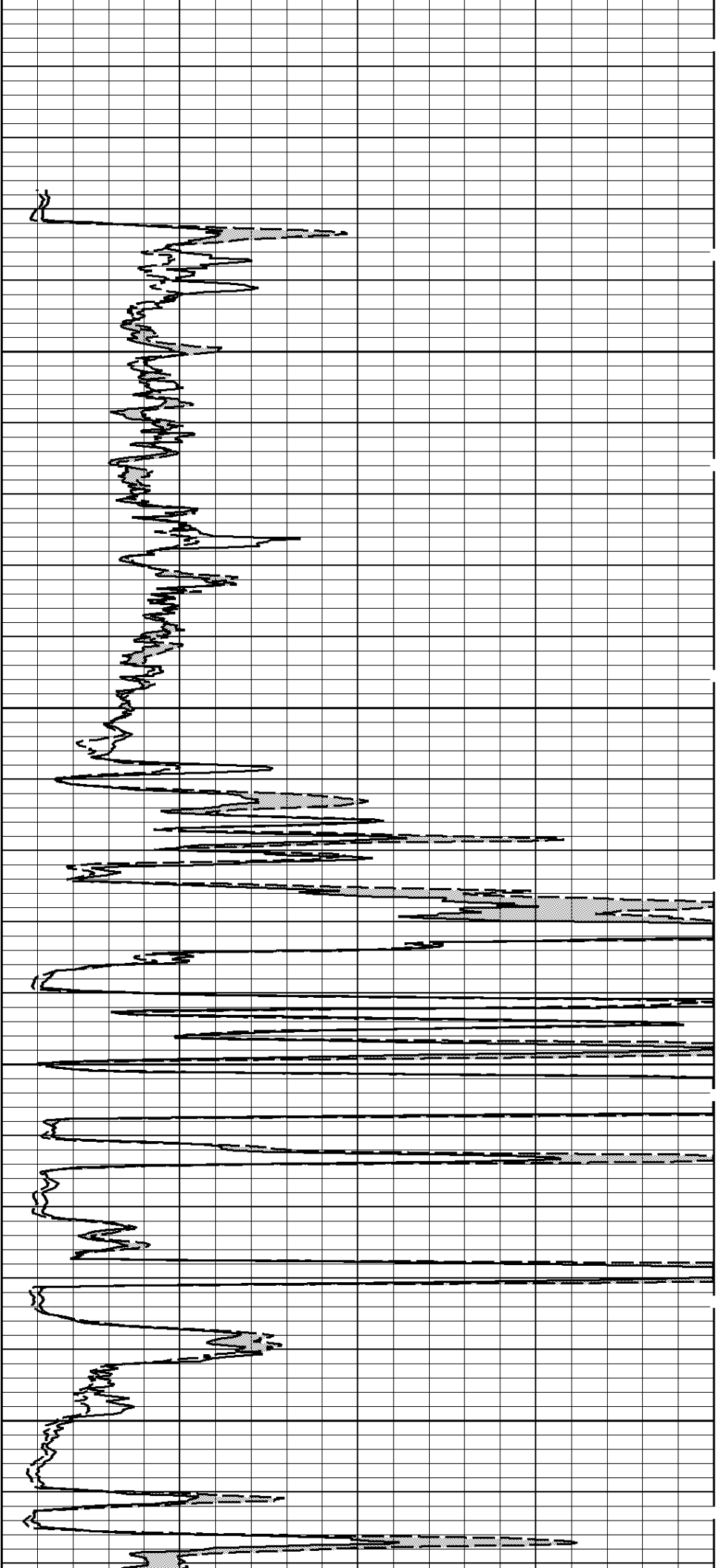
File #1.1

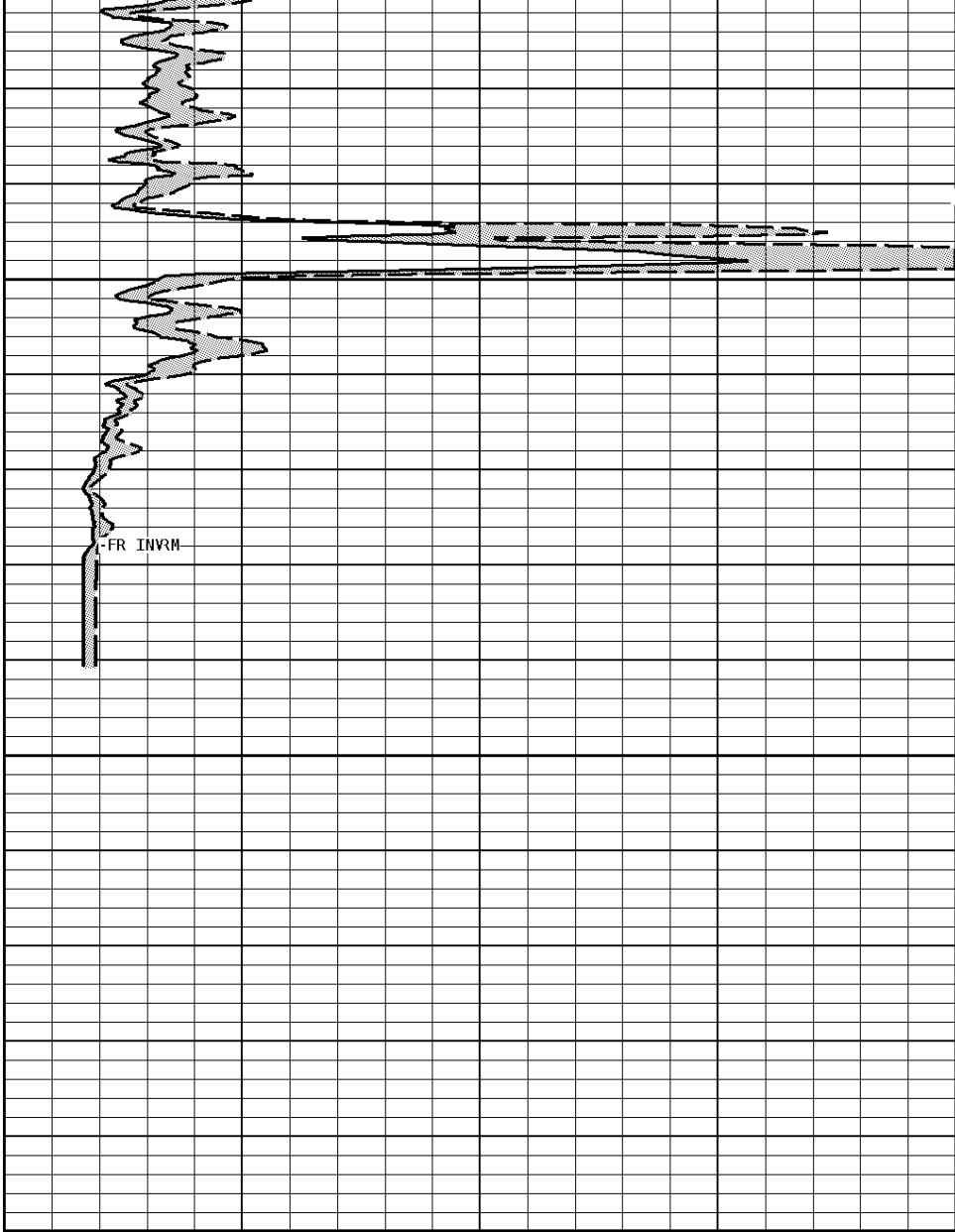
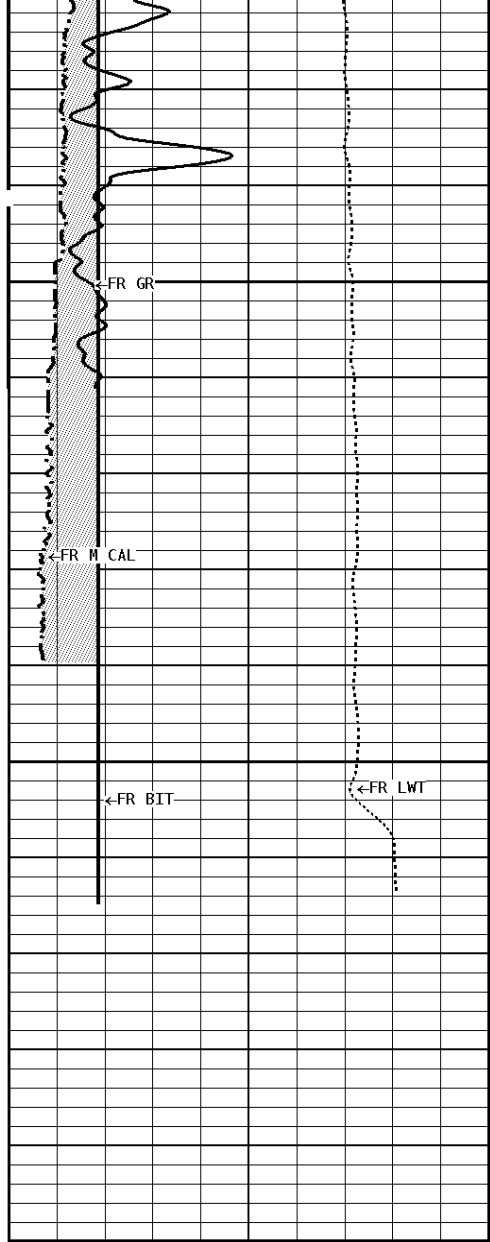
4300



4400

4500





4600
4604

File #1.1.7

1:240 REPEAT SECTION

GAMMA RAY API UNITS	
150 0	300 150
TENSION LBS	
10000	0
CALIPER MICRO INCHES (IN)	
16 6	26 16
BIT SIZE INCHES (IN)	
6	16

NORMAL OHMM	
0	40
INVERSE OHMM	
0	40

*** Borehole Zone Factors ***

Zone 1	99999.0	to	0.0	Feet
--------	---------	----	-----	------

*** Calibration Summary ***

Shop Calibration					
GRT-B					
Performed : 24-JUN-2019			Time : 12:20		
Sensor Suite : GR-GR5			ID : GRT-BC-038		
	Background	Measured Jig	Units	Calibrated Jig	Units
GR	36	266	CPS	160	GRAPI
Shop Calibration					
MLT-AB					
Performed : 03-JUN-2019			Time : 15:59		
Sensor Suite : CAL-MSFL			ID : MLT-012		
	Jig - Measured		Jig - Calibrated		Units
	Ring#1	Ring#2	Ring#1	Ring#2	
CL # 1	12.6	15.6	6.0	12.0	IN.
Performed : 03-Jun-2019			Time : 16:08		
Sensor Suite : MS-NI			ID : MLT-012		
	Jig#1	Jig#2	Verifier	Units	
VN-0	522.41	3592.20	3592.82		
VN-90	322.29	4426.00	4426.45		
MPNR Measured	3.07	28.50	28.51		
MPNR Calibrated	2.00	20.00	20.00	OHMM	
VI-0	379.00	5381.38	5381.98		
VI-90	608.31	4363.26	4364.08		
MPIR Measured	3.58	34.64	34.64		
MPIR Calibrated	2.00	20.00	20.00	OHMM	



Company: TRANS PACIFIC OIL CORPORATION
 Well: FLAX A #1-16
 Location: 2310' FNL & 2970' FEL
 Logged: 10-01-2019
 K.B. Elev: 2537.0 Ft