



FRAC FINDER LOG

Company INDIAN OIL CO., INC.
 Well # C 3 BELL
 Field JEM
 County BARBER
 State KANSAS

Company INDIAN OIL CO., INC.
 Well # C 3 BELL
 Field JEM
 County BARBER State KANSAS

Location: API # : 15-007-24352-0000
 1400' FSL & 3300' FEL
 SEC 5 TWP 30S RGE 13W
 Permanent Datum GROUND LEVEL Elevation 1931
 Log Measured From KELLY BUSHING 12' A.G.L.
 Drilling Measured From KELLY BUSHING
 Other Services CDL/CNL/DIL SON
 Elevation K.B. 1943
 D.F. 1941
 G.L. 1931

Date	06/21/19
Run Number	TWO
Depth Driller	4840
Depth Logger	4843
Bottom Logged Interval	4833
Top Log Interval	2700
Casing Driller	13 3/8" @ 265
Casing Logger	265
Bit Size	7 7/8"
Type Fluid in Hole	CHEMICAL MUD
Density / Viscosity	9.4/52
pH / Fluid Loss	10.0/10.4
Source of Sample	FLOWLINE
Rm @ Meas. Temp	.3 @ 70F
Rmt @ Meas. Temp	.23 @ 70F
Rmc @ Meas. Temp	.36 @ 70F
Source of Rmf / Rmc	MEASURED
Rm @ BHT	.17 @ 123F
Time Circulation Stopped	2 HOURS
Time Logger on Bottom	///
Maximum Recorded Temperature	123F
Equipment Number	1523
Location	HAYS, KANSAS
Recorded By	GUS PFANENSTIEL
Witnessed By	AARON YOUNG

<<< Fold Here >>>

All interpretations are opinions based on inferences from electrical or other measurements and we cannot and do not guarantee the accuracy or correctness of any interpretation, and we shall not, except in the case of gross or willful negligence on our part, be liable or responsible for any loss, costs, damages, or expenses incurred or sustained by anyone resulting from any interpretation made by any of our officers, agents or employees. These interpretations are also subject to our general terms and conditions set out in our current Price Schedule.

Comments

THANK YOU FOR USING ELI WIRELINE, HAYS, KS. (785) 628-6395

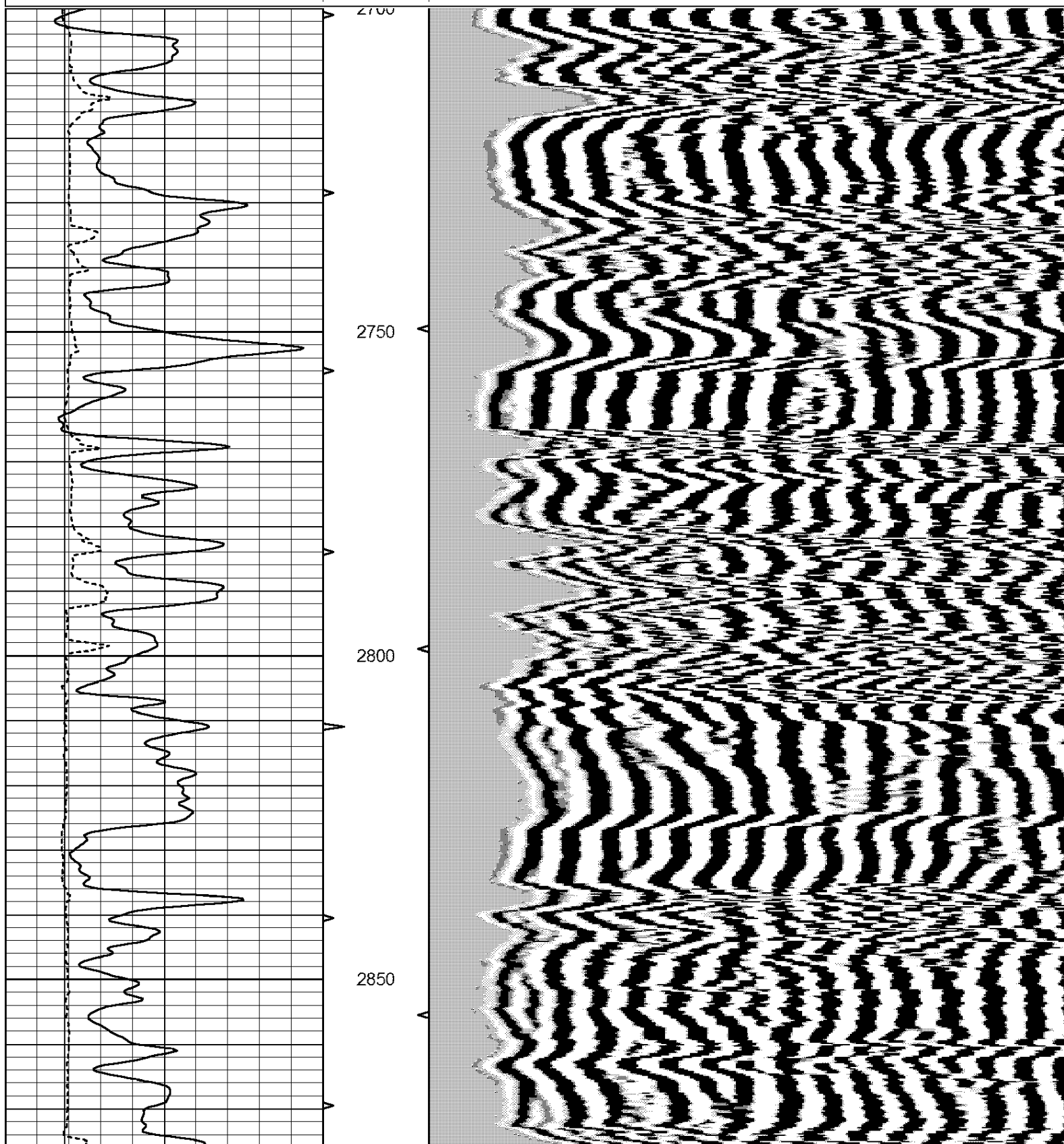
DIRECTIONS
 SOUTH OF SAWYER 3 TO FALCON RD.
 WEST 4 1/2 MILES

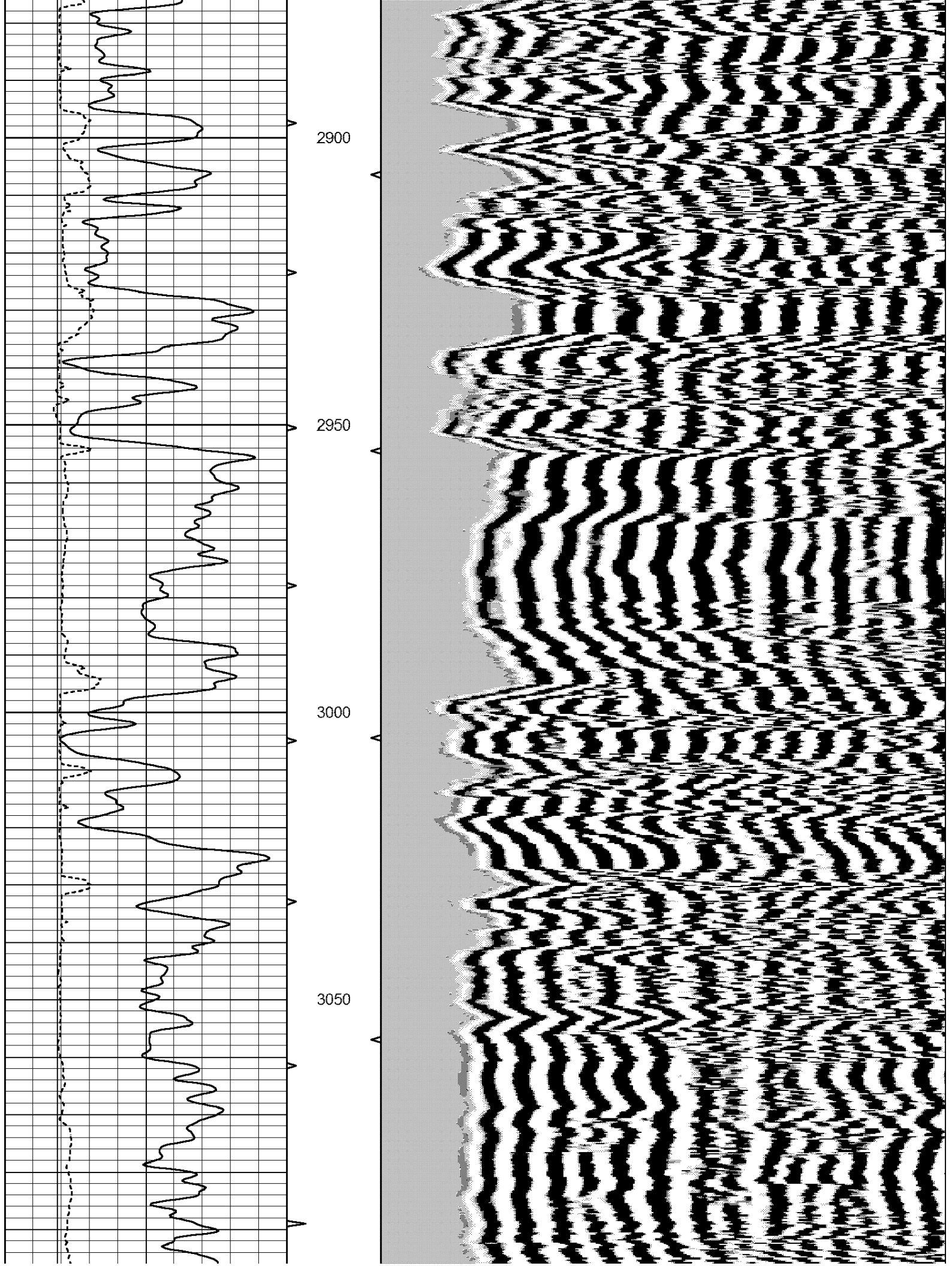


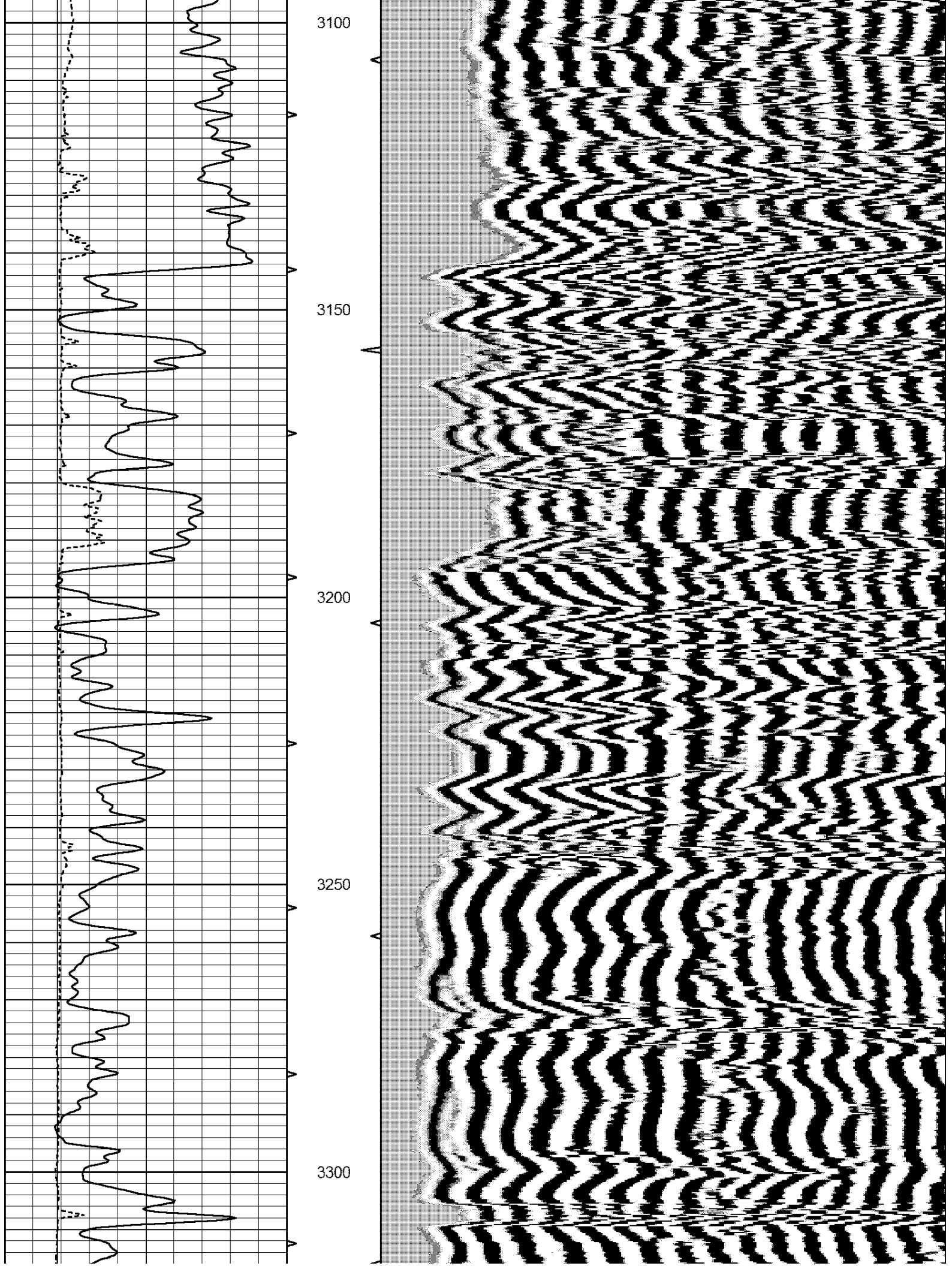
MAIN PASS

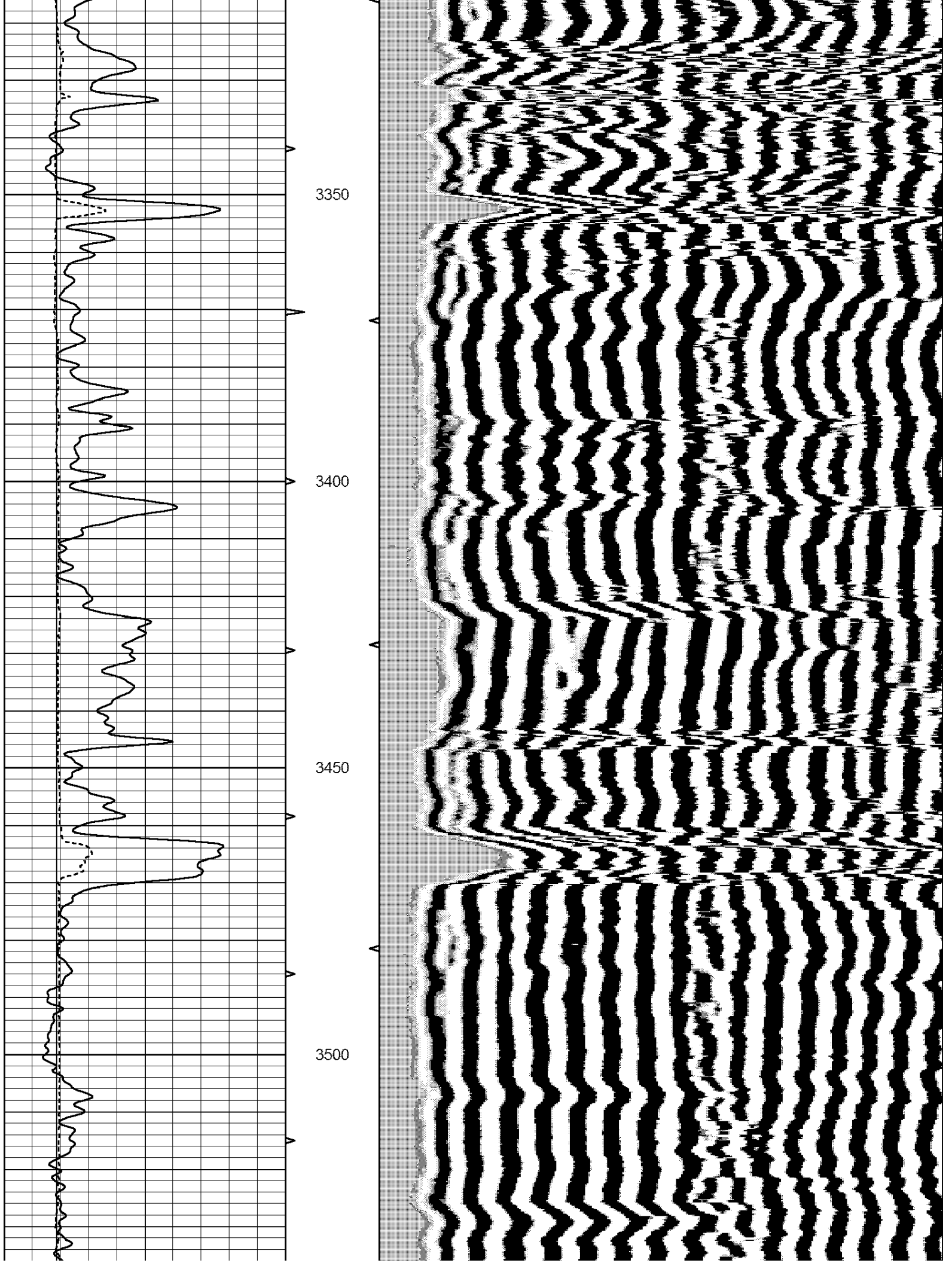
Database File: 3692pe.db
 Dataset Pathname: pass5MIC
 Presentation Format: frac
 Dataset Creation: Fri Jun 21 11:02:57 2019
 Charted by: Depth in Feet scaled 1:240

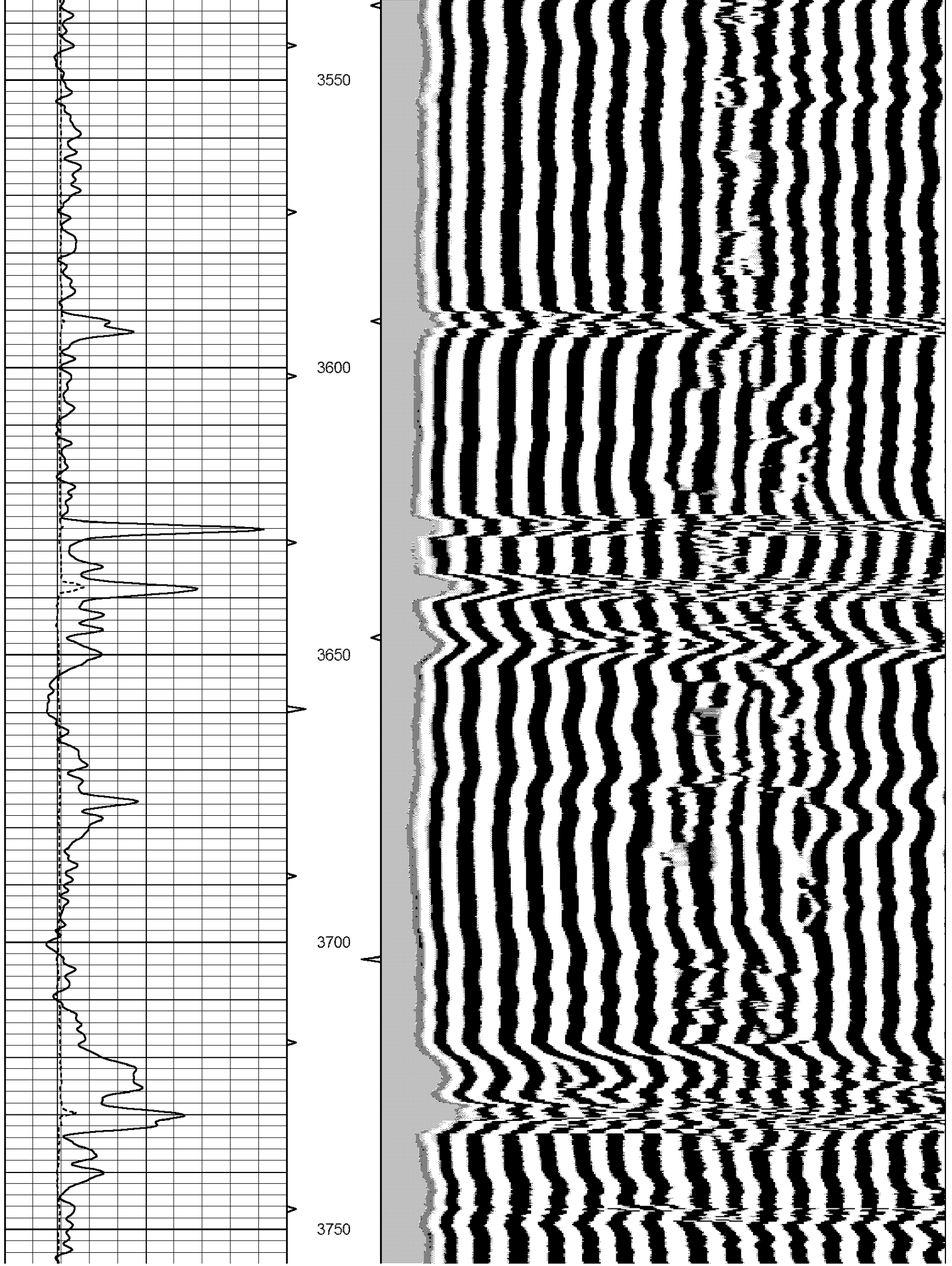
6	DCAL (in)	16	ABHV	200	WWF1	1200
0	GR (GAPI)	150	10 (ft3)	0		
6	BOREID (in)	16	TBHV			
			0 (ft3)	10		

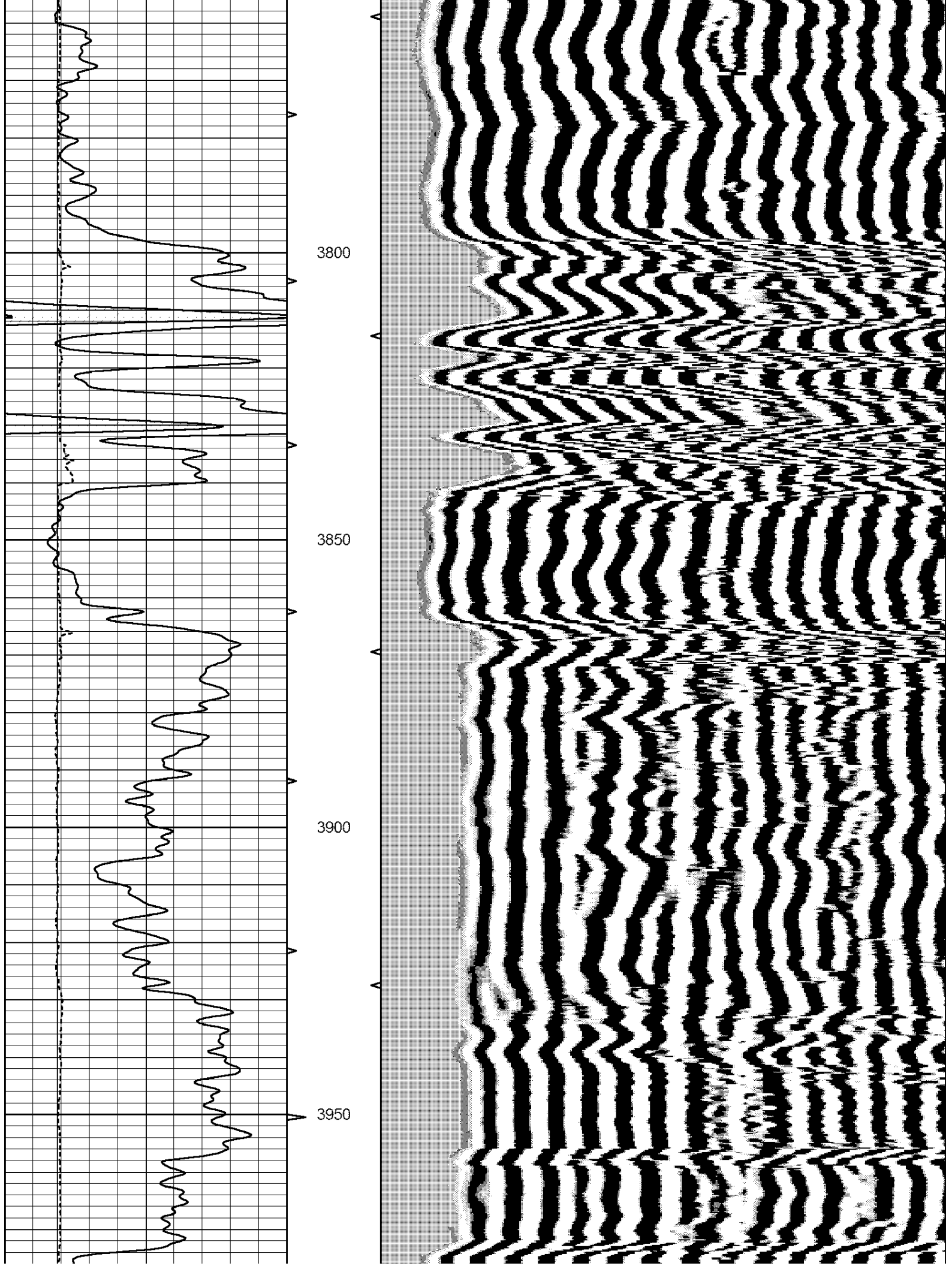


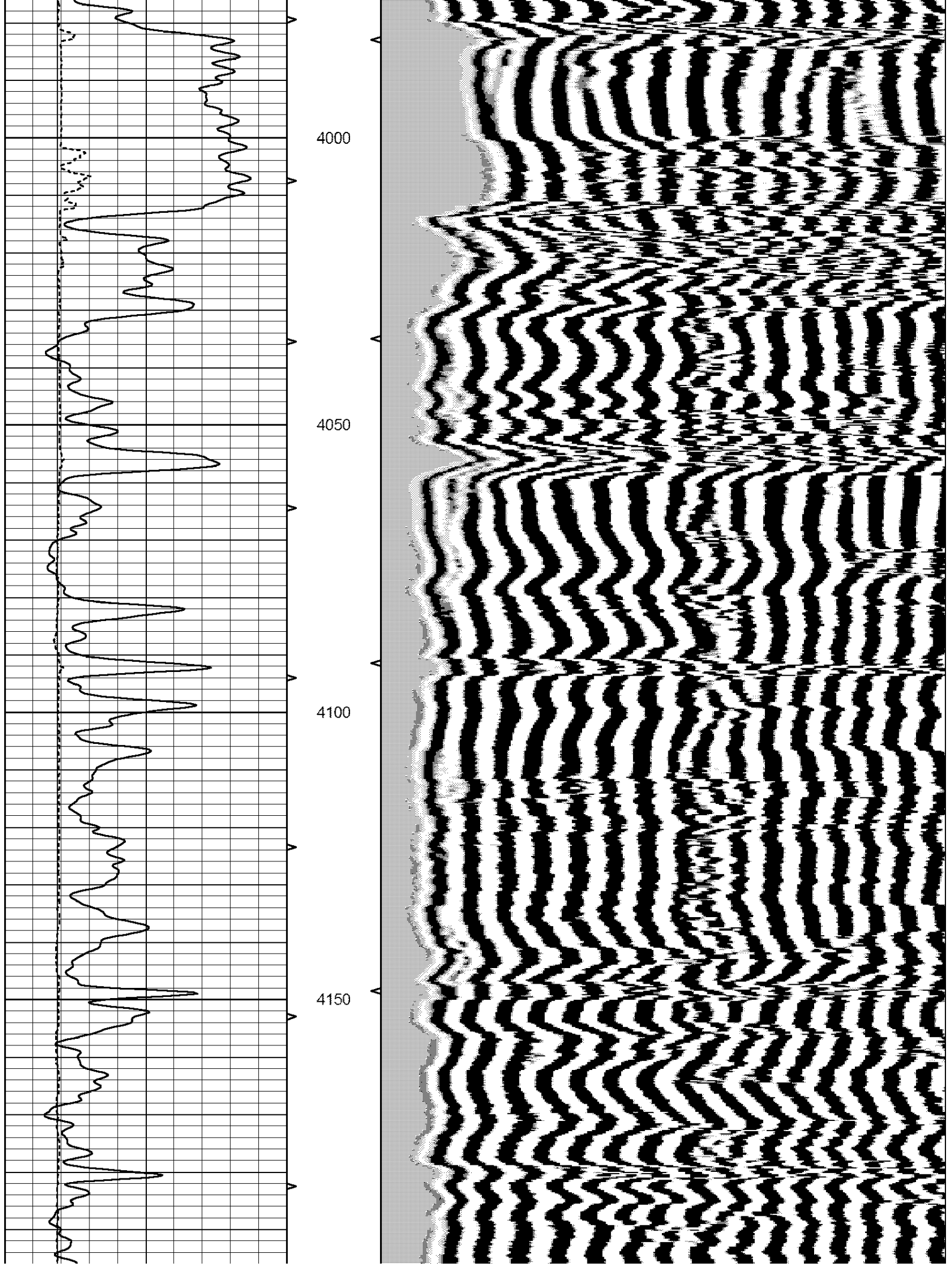


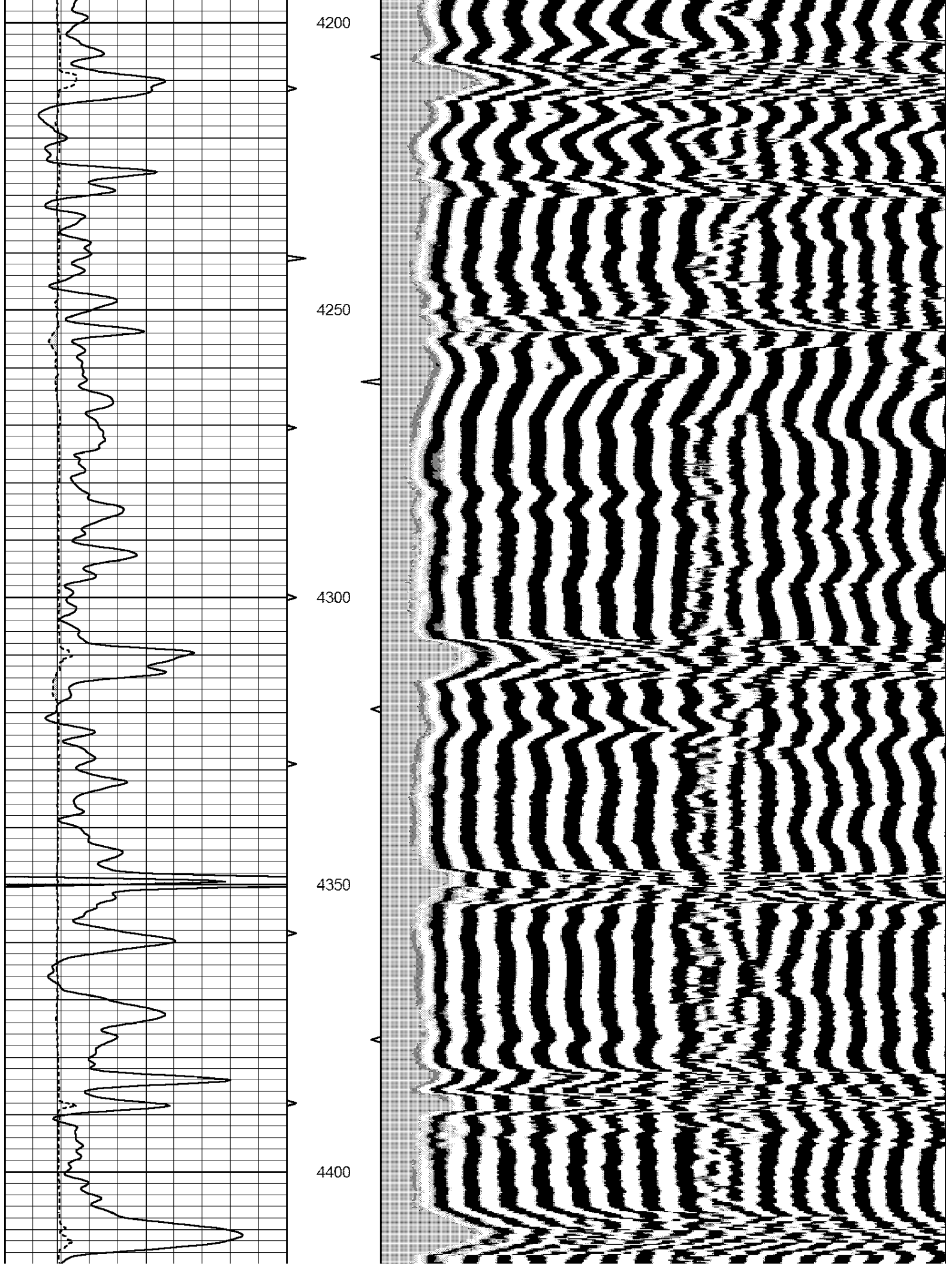


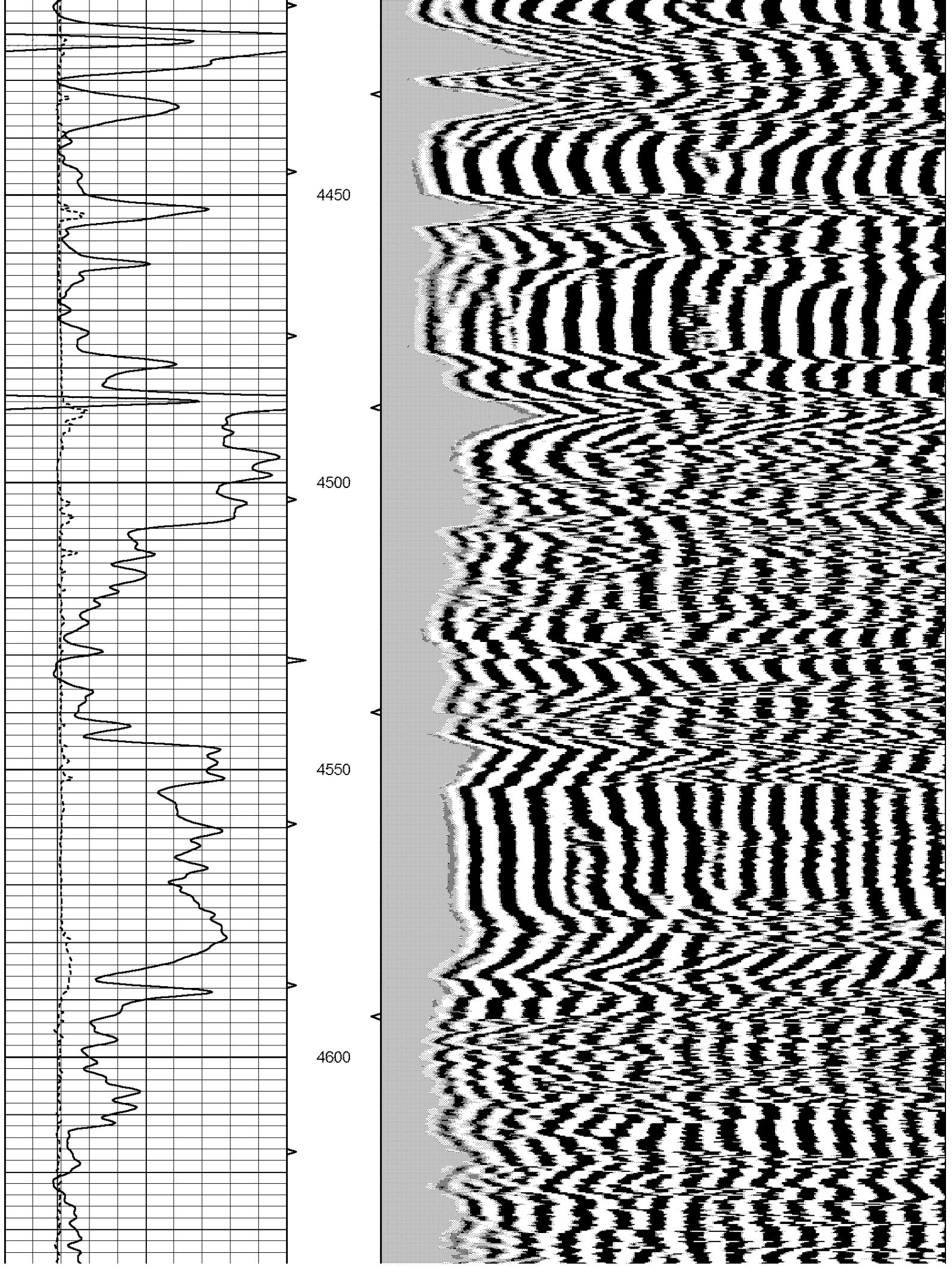


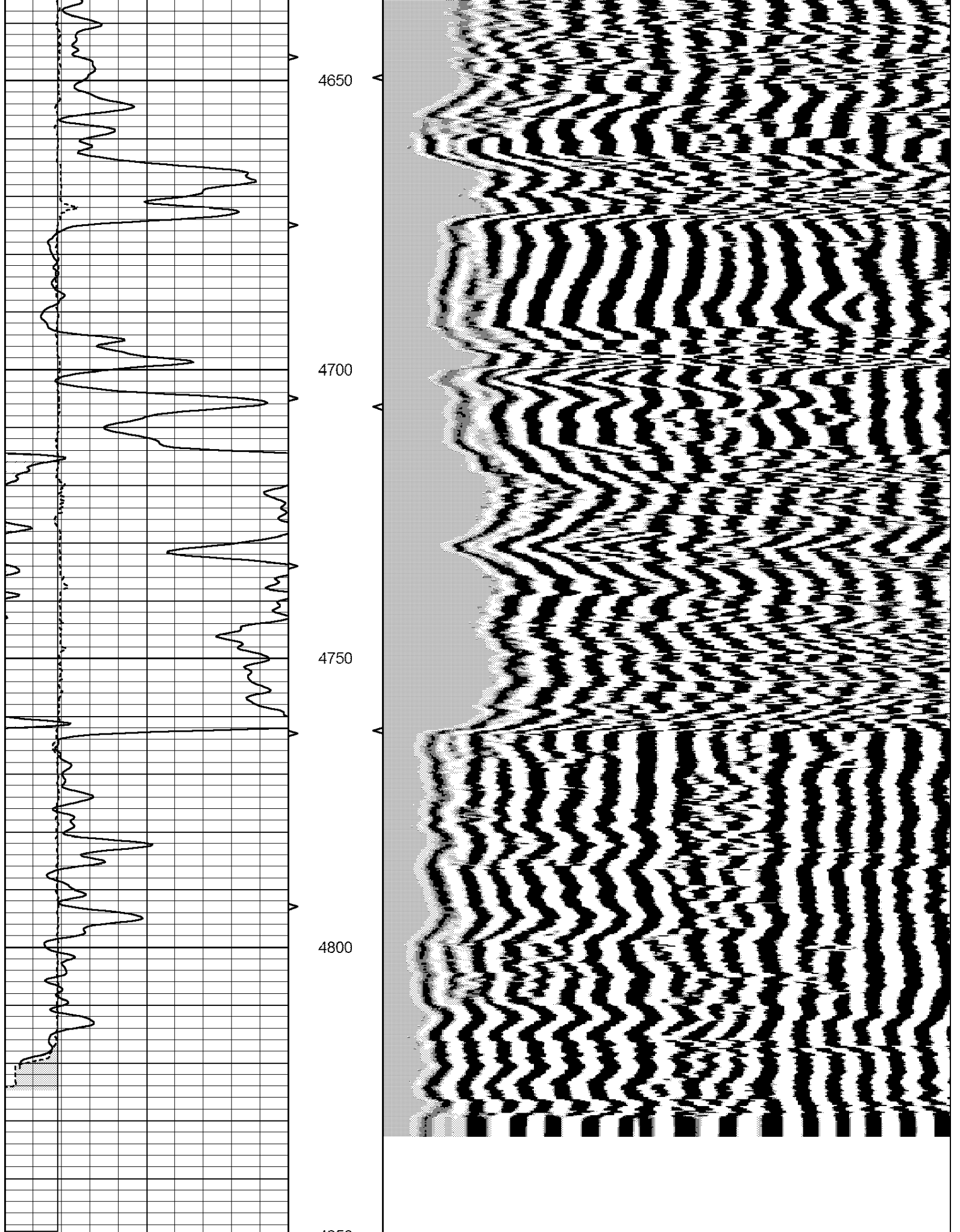












4650

4700

4750

4800

6

DCAL (in)

16

ABHV

200

WF1

1200

0	GR (GAPI)	150	10 (ft3)	0
6	BOREID (in)	16	TBHV	
			0 (ft3)	10