



**COMPENSATED
DENSITY/NEUTRON
PE/LOG**

Company	INDIAN OIL CO., INC.	Company	INDIAN OIL CO., INC.
Well	# C 3 BELL	Well	# C 3 BELL
Field	JEM	Field	JEM
County	BARBER	County	BARBER
State	KANSAS	State	KANSAS
Location:	API # : 15-007-24352-0000	Other Services	DIL/ML SON
	1400' FSL & 3300' FEL		
	SEC 5 TWP 30S RGE 13W		
Permanent Datum	GROUND LEVEL	Elevation	1931
Log Measured From	KELLY BUSHING 12' A.G.L.	K.B.	1943
Drilling Measured From	KELLY BUSHING	D.F.	1941
		G.L.	1931
Date	06/21/19		
Run Number	ONE		
Depth Driller	4840		
Depth Logger	4843		
Bottom Logged Interval	4823		
Top Log Interval	2700		
Casing Driller	13 3/8" @ 265		
Casing Logger	265		
Bit Size	7 7/8"		
Type Fluid in Hole	CHEMICAL MUD		
Density / Viscosity	9.4/52		
pH / Fluid Loss	10.0/10.4		
Source of Sample	FLOWLINE		
Rm @ Meas. Temp	.3 @ 70F		
Rmt @ Meas. Temp	.23 @ 70F		
Rmc @ Meas. Temp	.36 @ 70F		
Source of Rmf / Rmc	MEASURED		
Rm @ BHT	.17 @ 123F		
Time Circulation Stopped	2 HOURS		
Time Logger on Bottom	///		
Maximum Recorded Temperature	123F		
Equipment Number	1523		
Location	HAYS, KANSAS		
Recorded By	GUS PFANENSTIEL		
Witnessed By	AARON YOUNG		

<<< Fold Here >>>

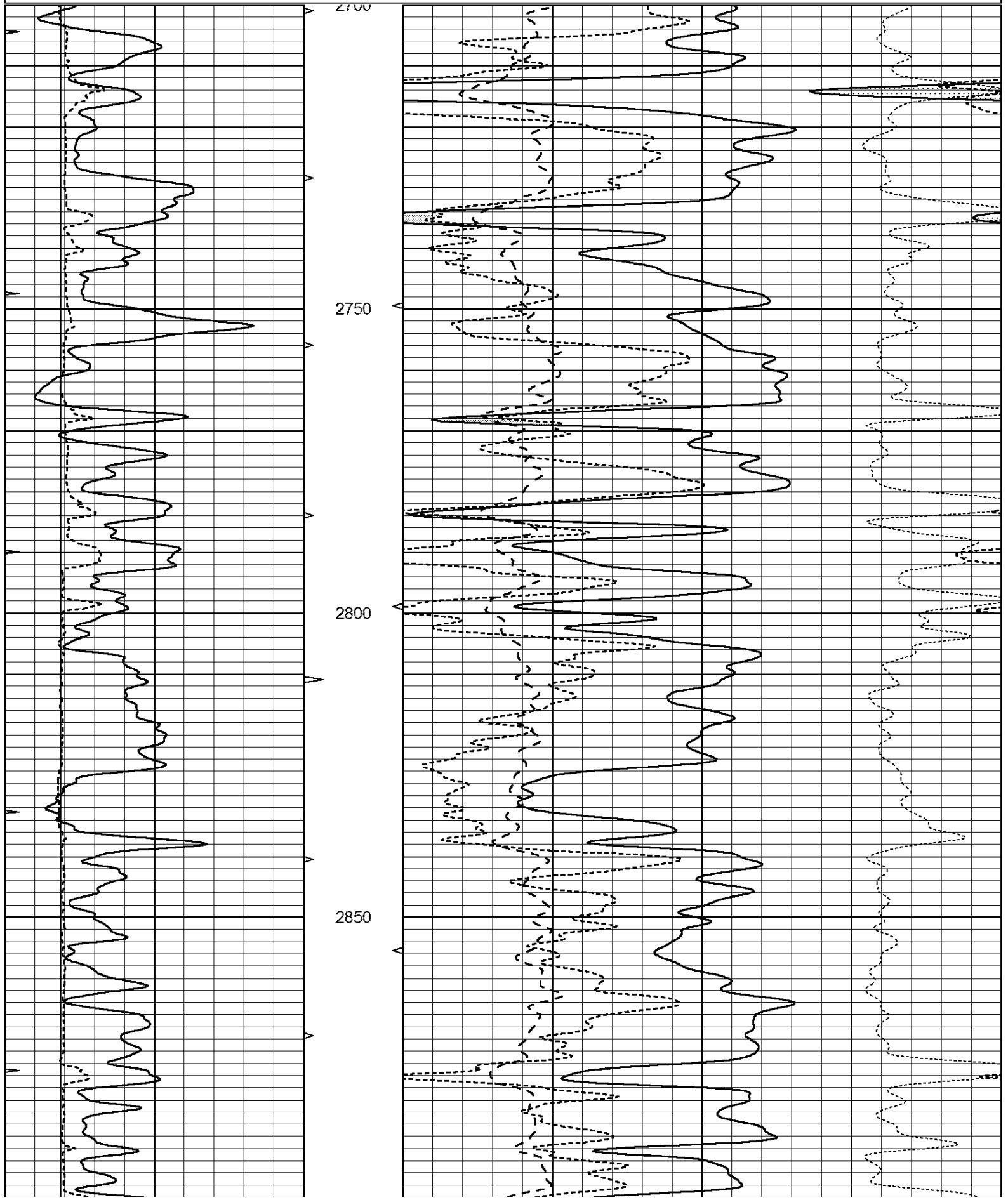
All interpretations are opinions based on inferences from electrical or other measurements and we cannot and do not guarantee the accuracy or correctness of any interpretation, and we shall not, except in the case of gross or willful negligence on our part, be liable or responsible for any loss, costs, damages, or expenses incurred or sustained by anyone resulting from any interpretation made by any of our officers, agents or employees. These interpretations are also subject to our general terms and conditions set out in our current Price Schedule.

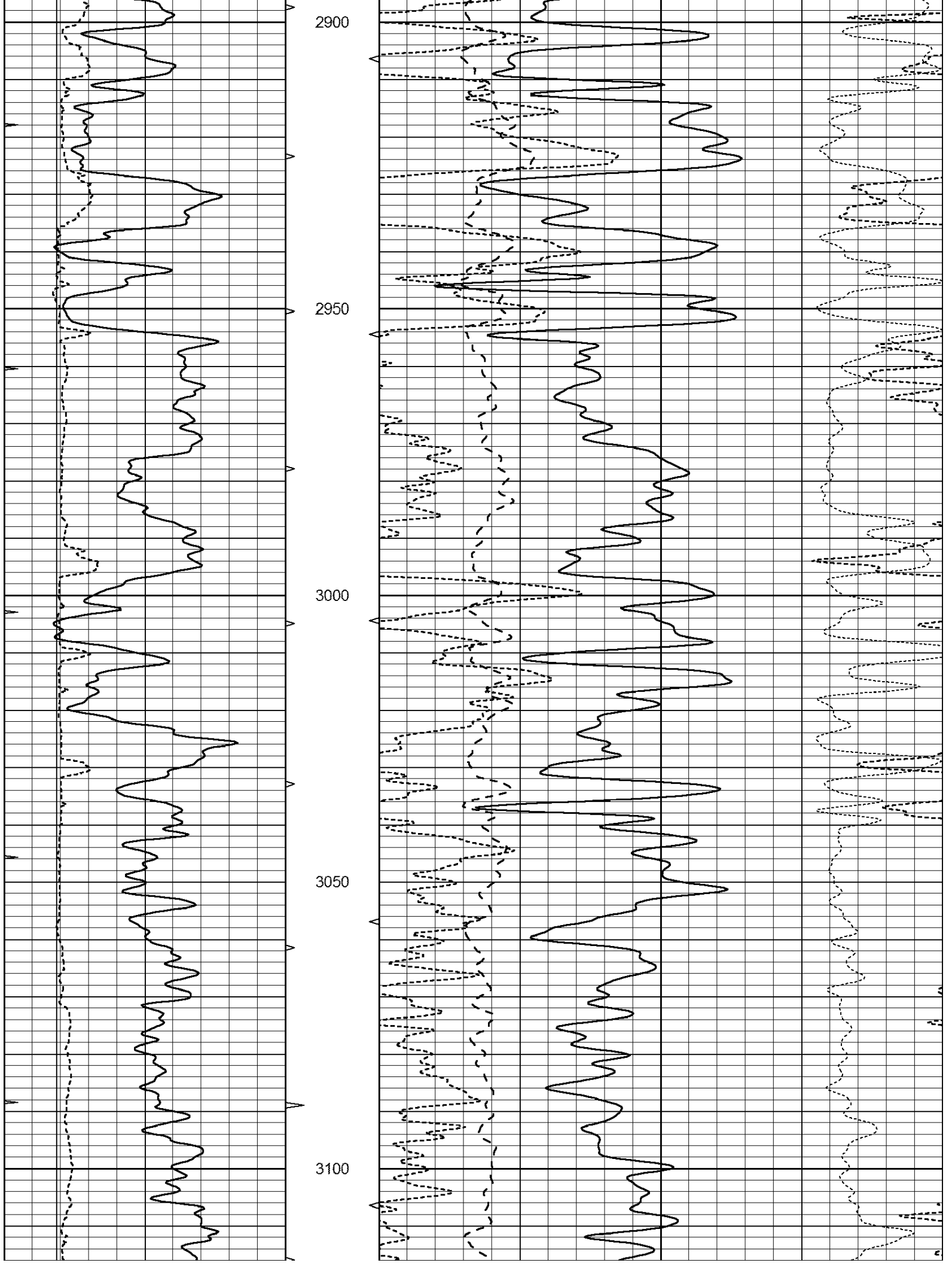
Comments

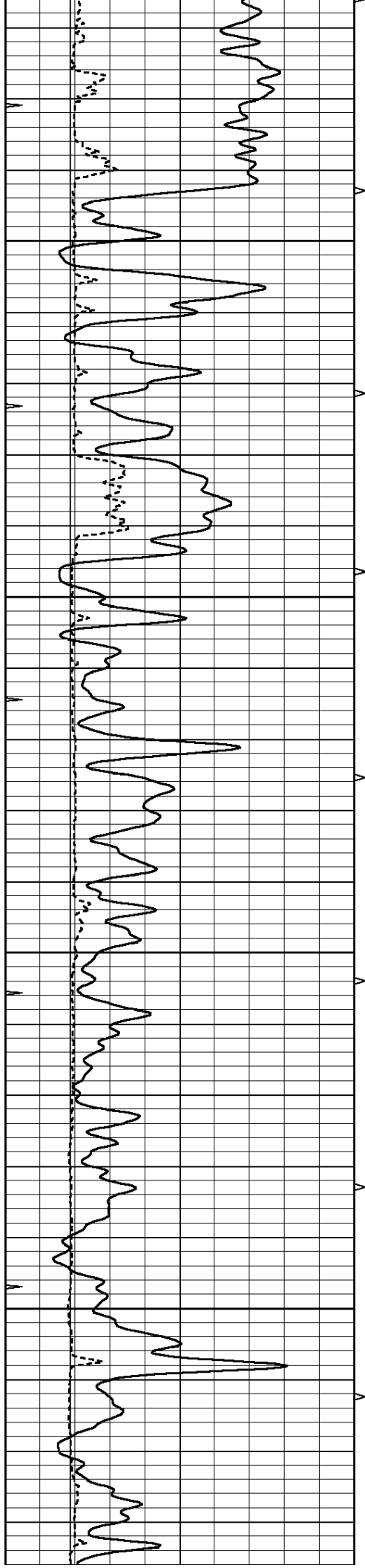
THANK YOU FOR USING ELI WIRELINE, HAYS, KS. (785) 628-6395

DIRECTIONS
SOUTH OF SAWYER 3 TO FALCON RD.
WEST 4 1/2 MILES

0	GAMMA RAY (GAPI)	150	ABHV	30	COMPENSATED DENSITY (pu)		-10		
6	CALIPER (in)	16	10 (ft3)	0	30	COMPENSATED NEUTRON (pu)		-10	
0	MINMK	20	TBHV	0	PE	10	-0.25	CORRECTION (g/cc)	0.25
			0 (ft3)	10					





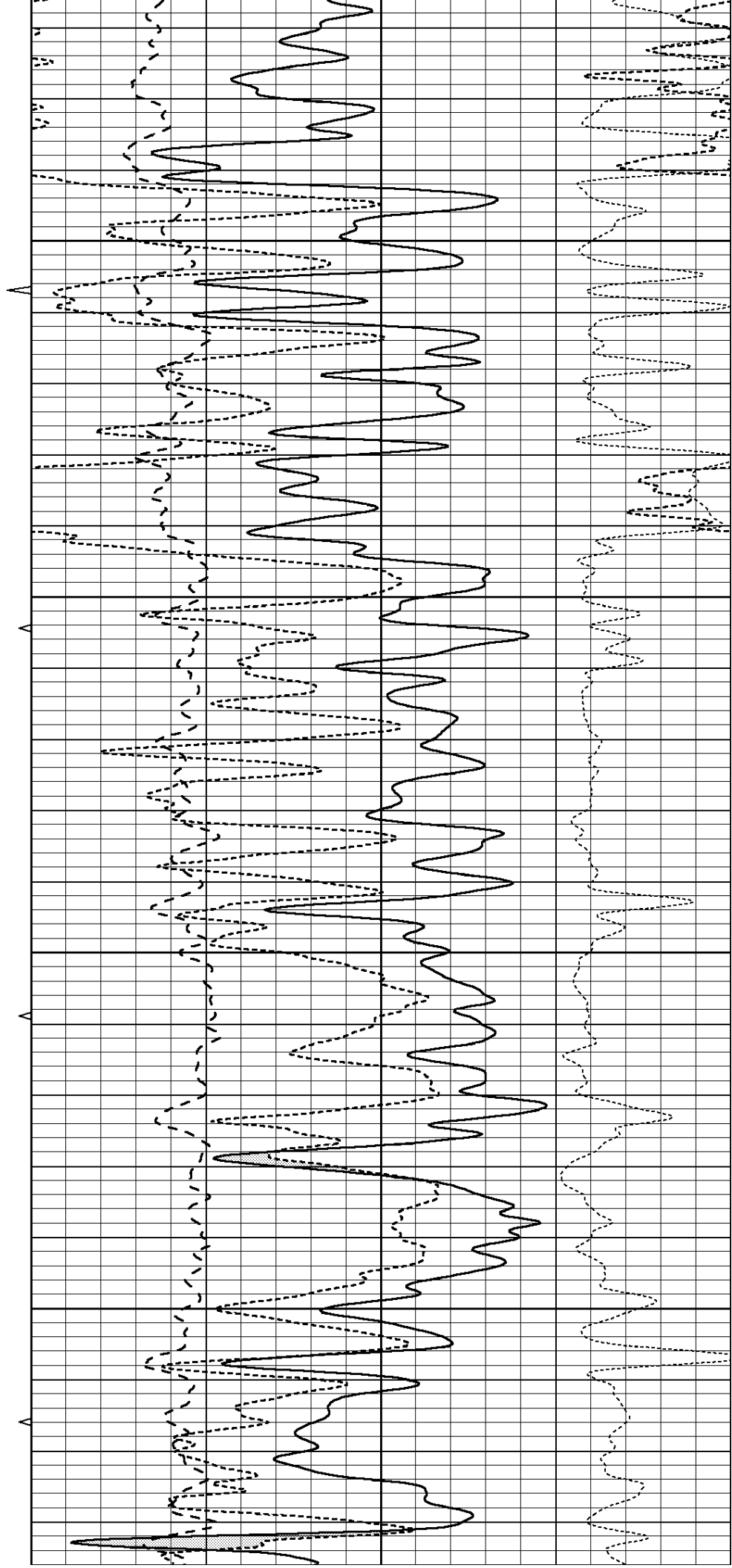


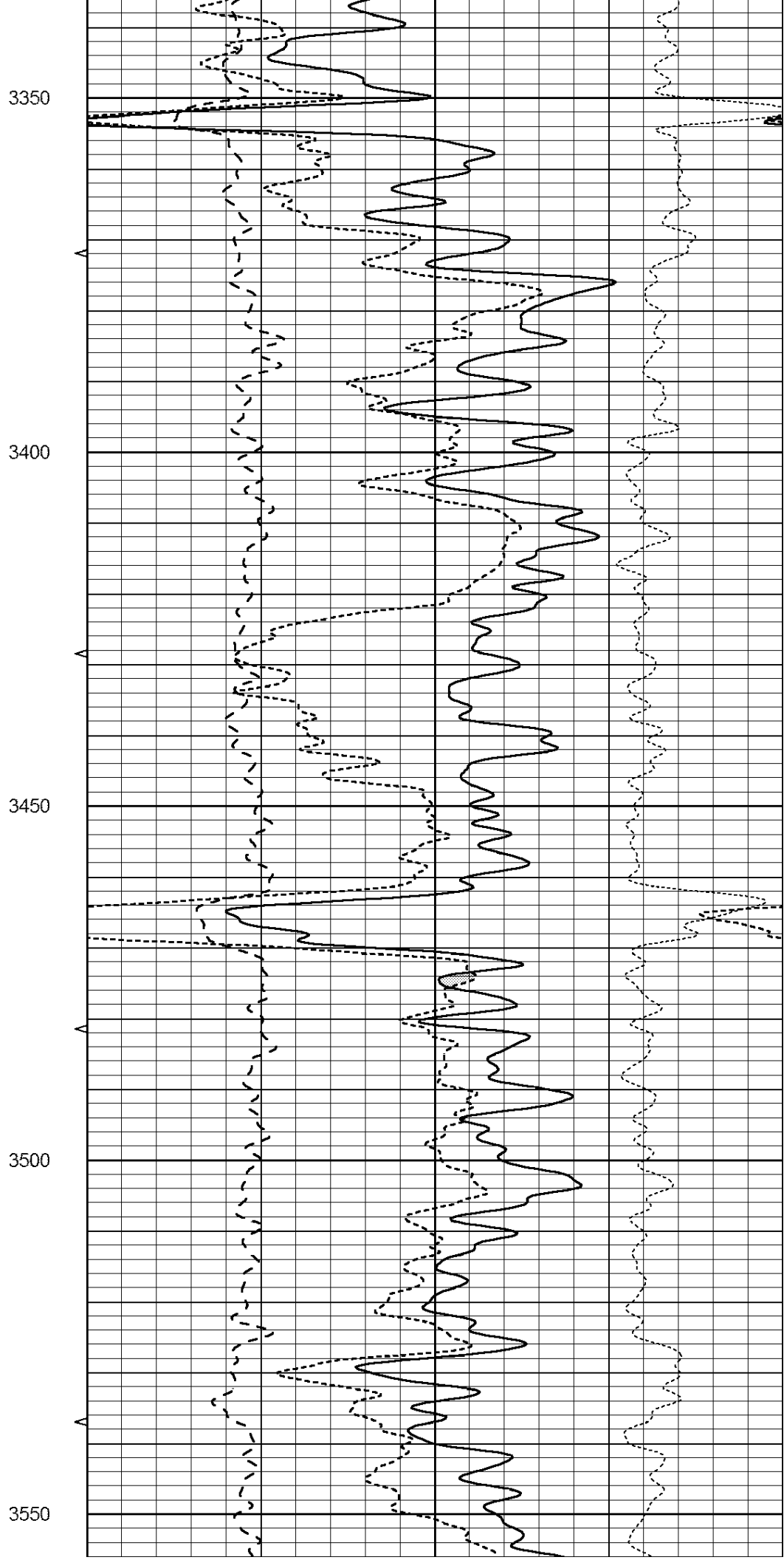
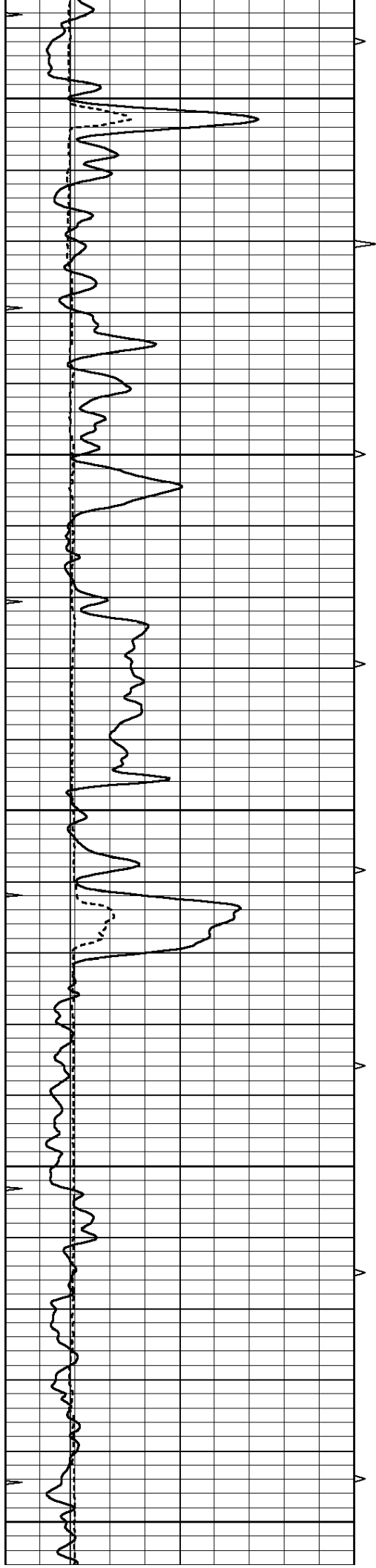
3150

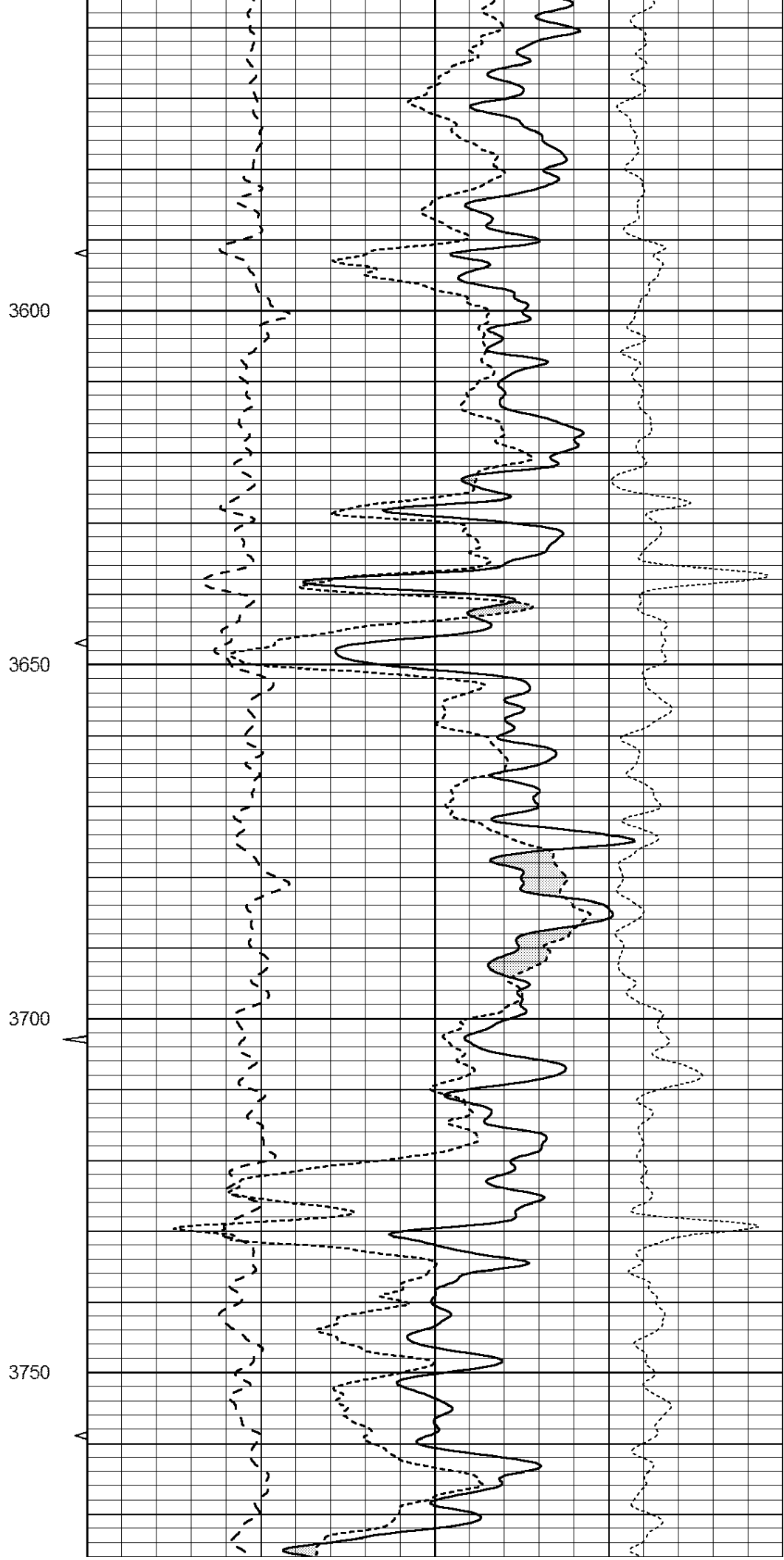
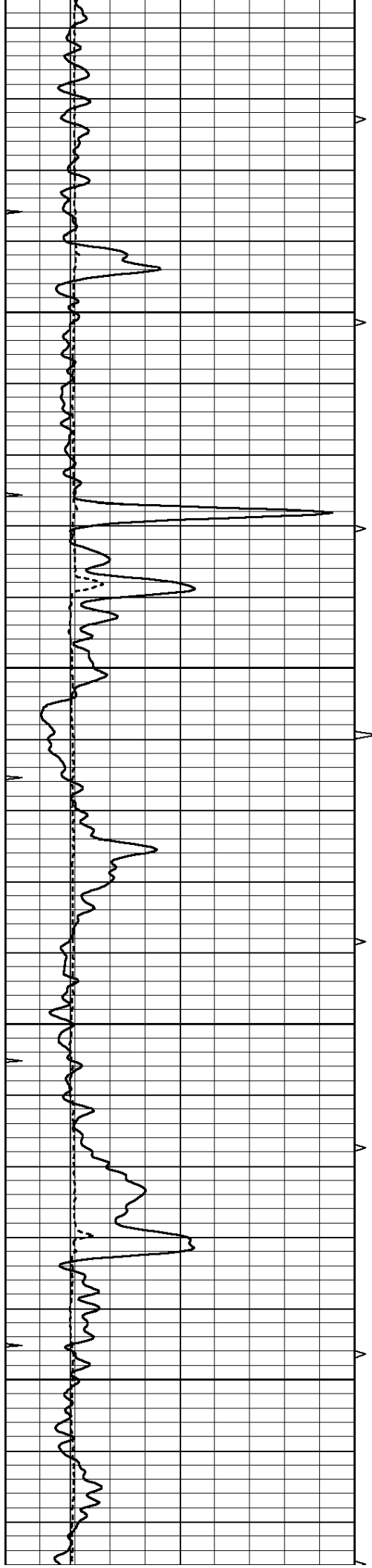
3200

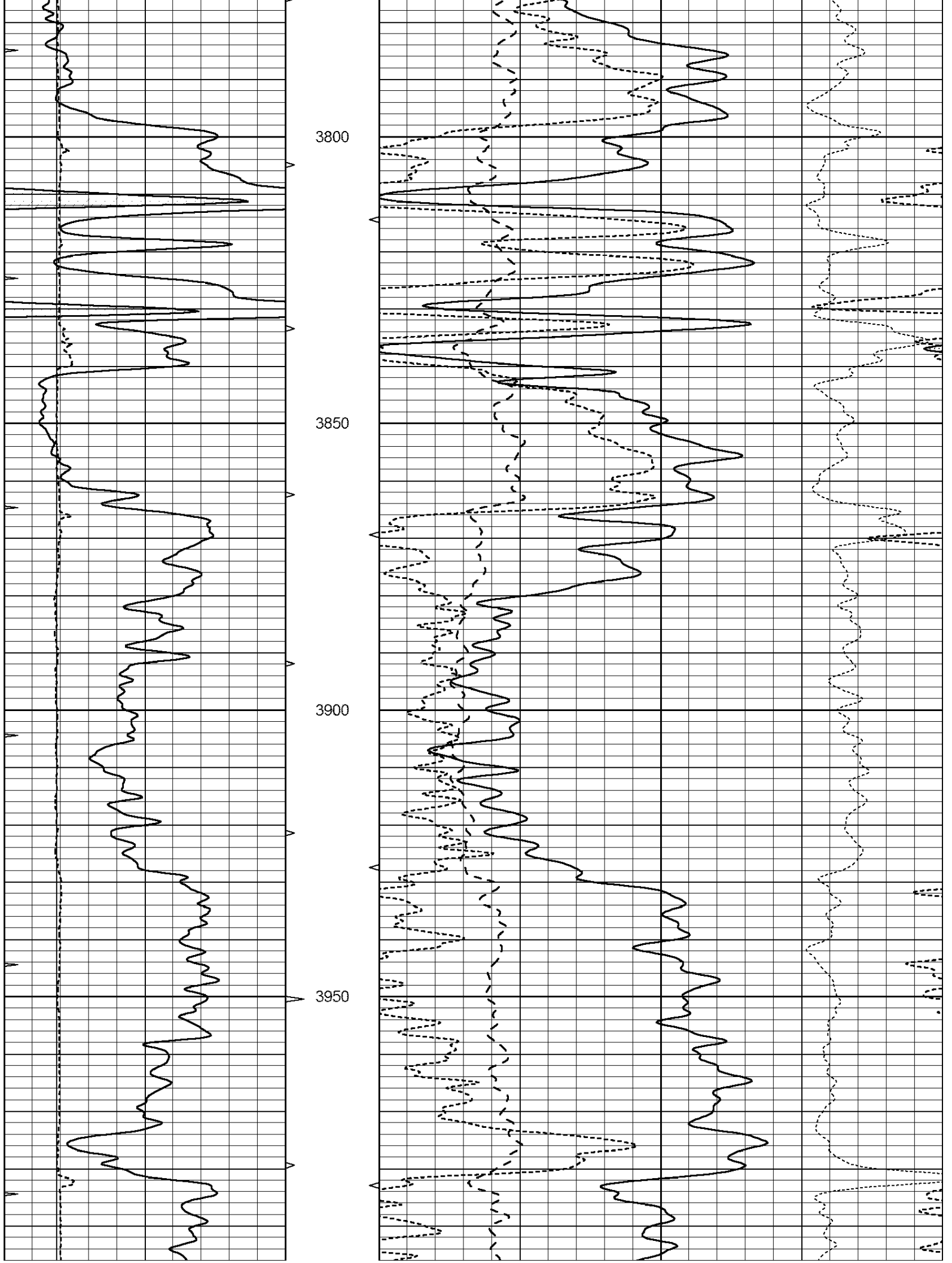
3250

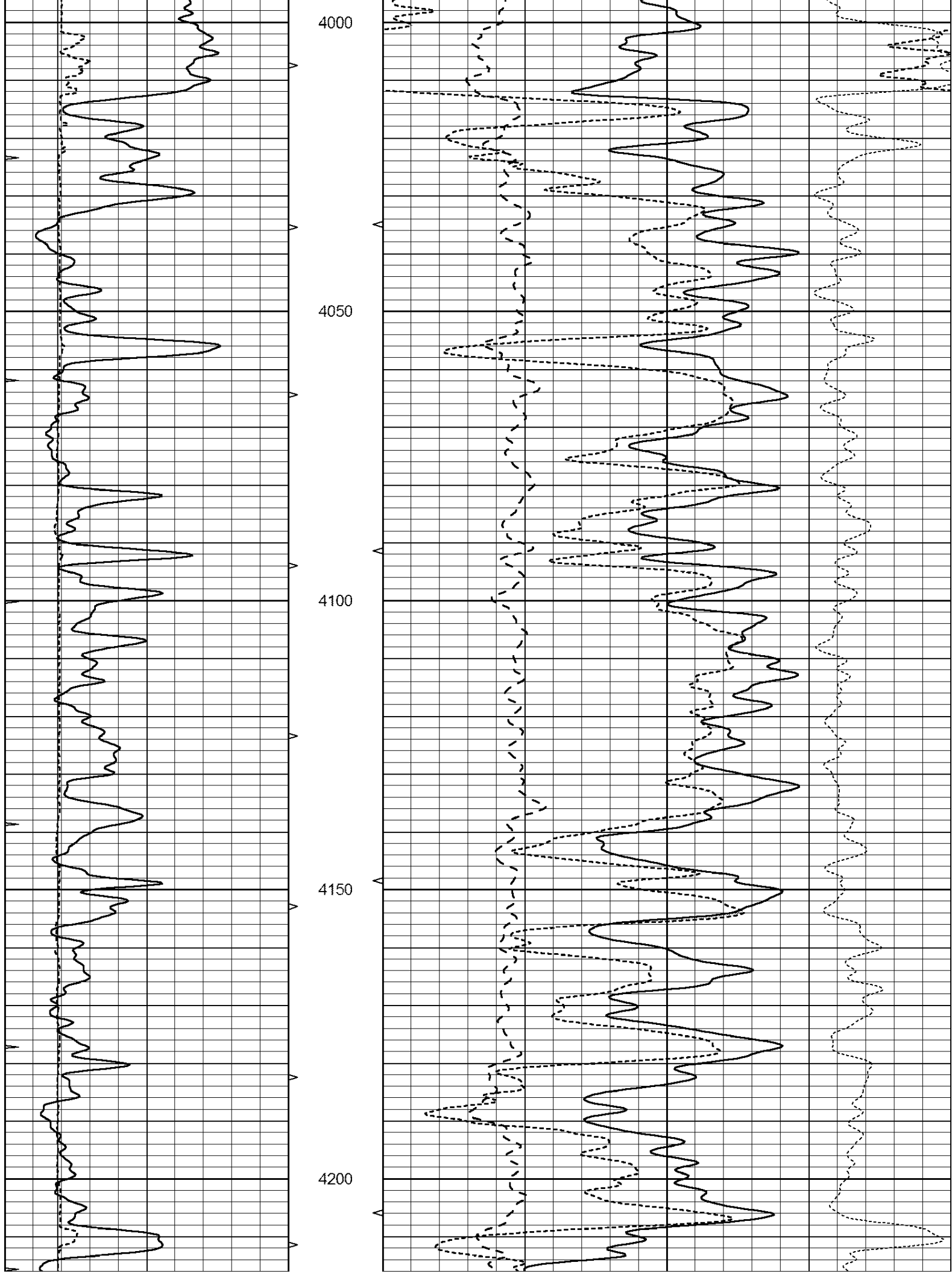
3300

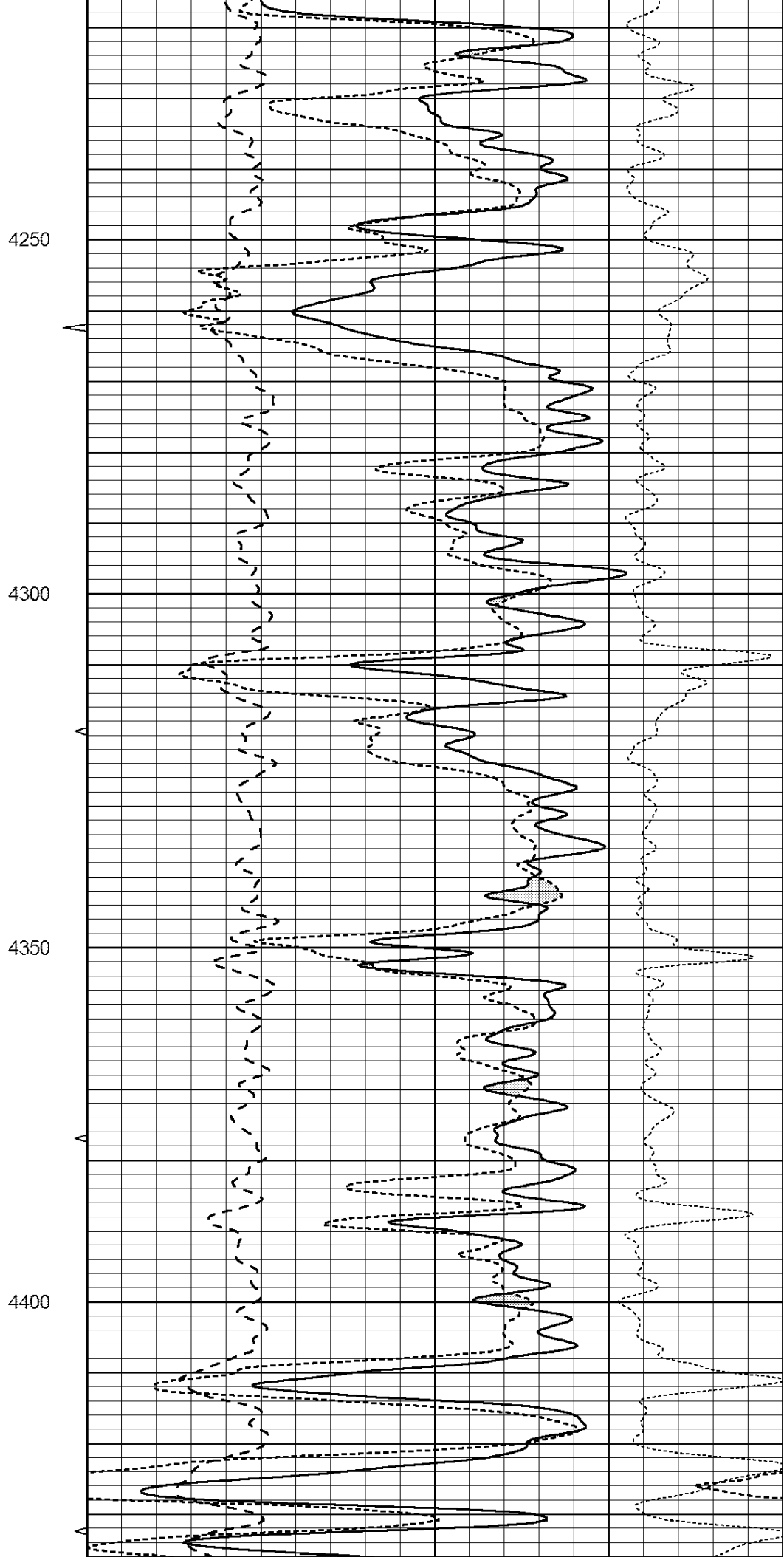
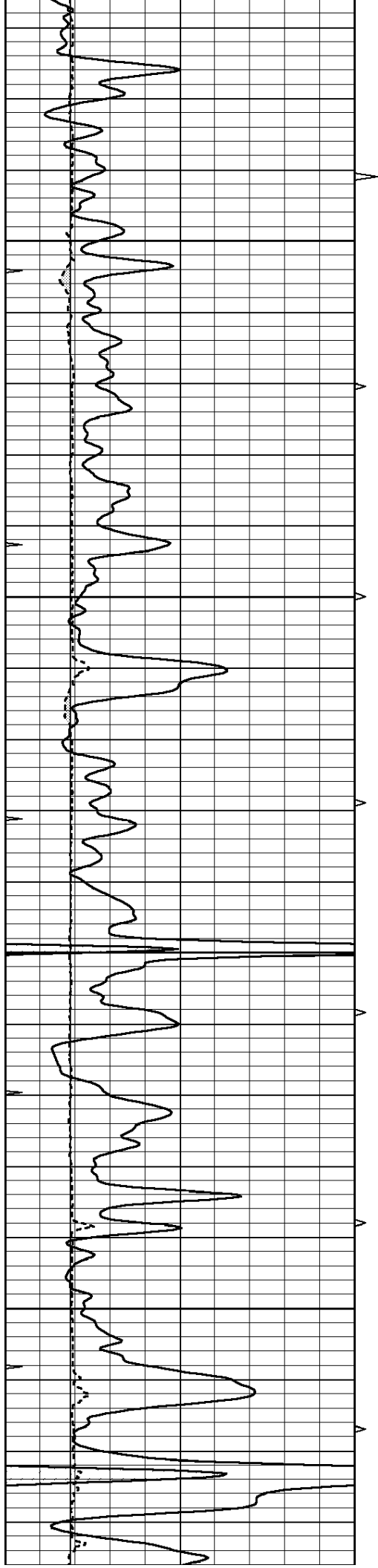


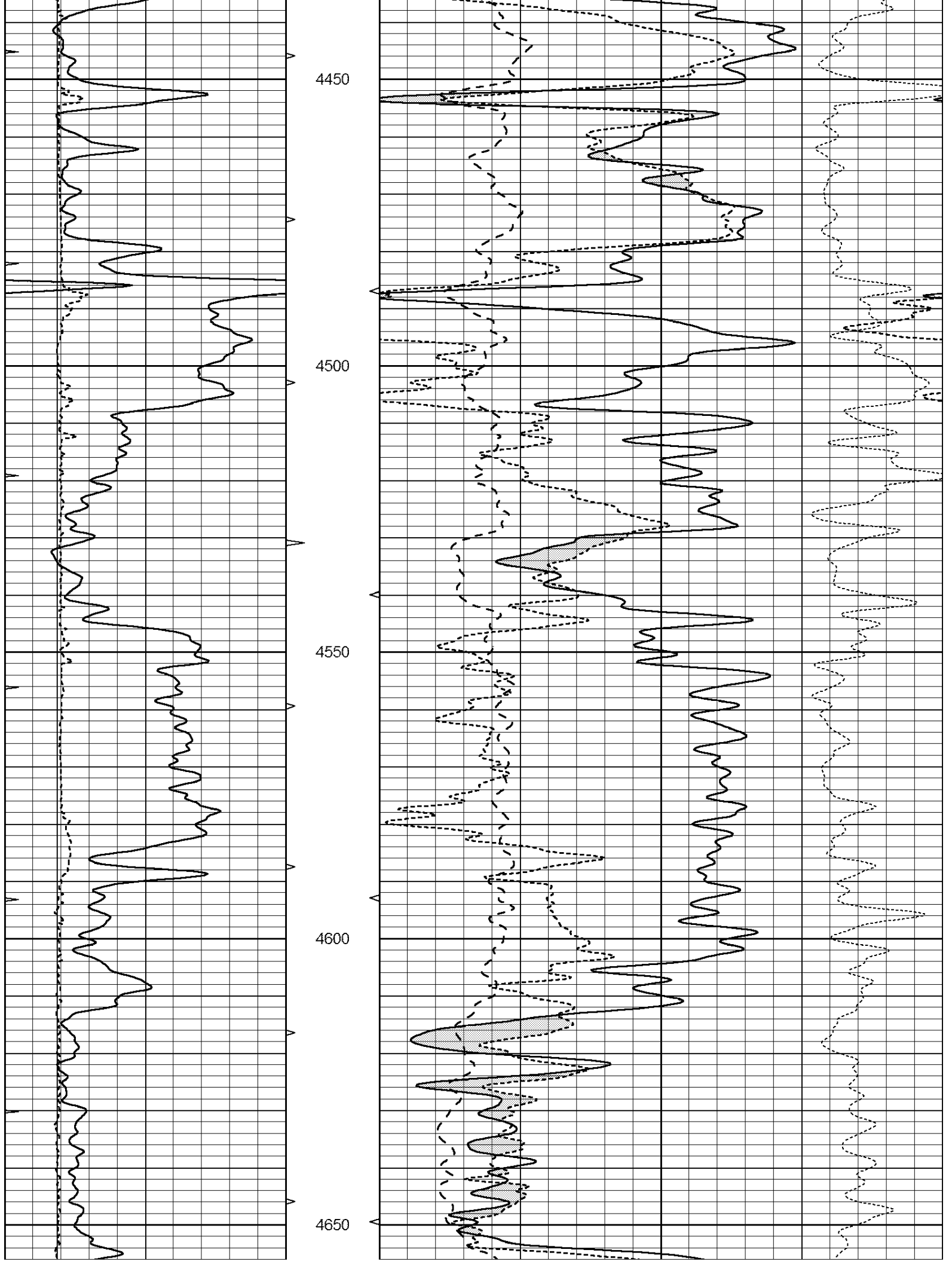


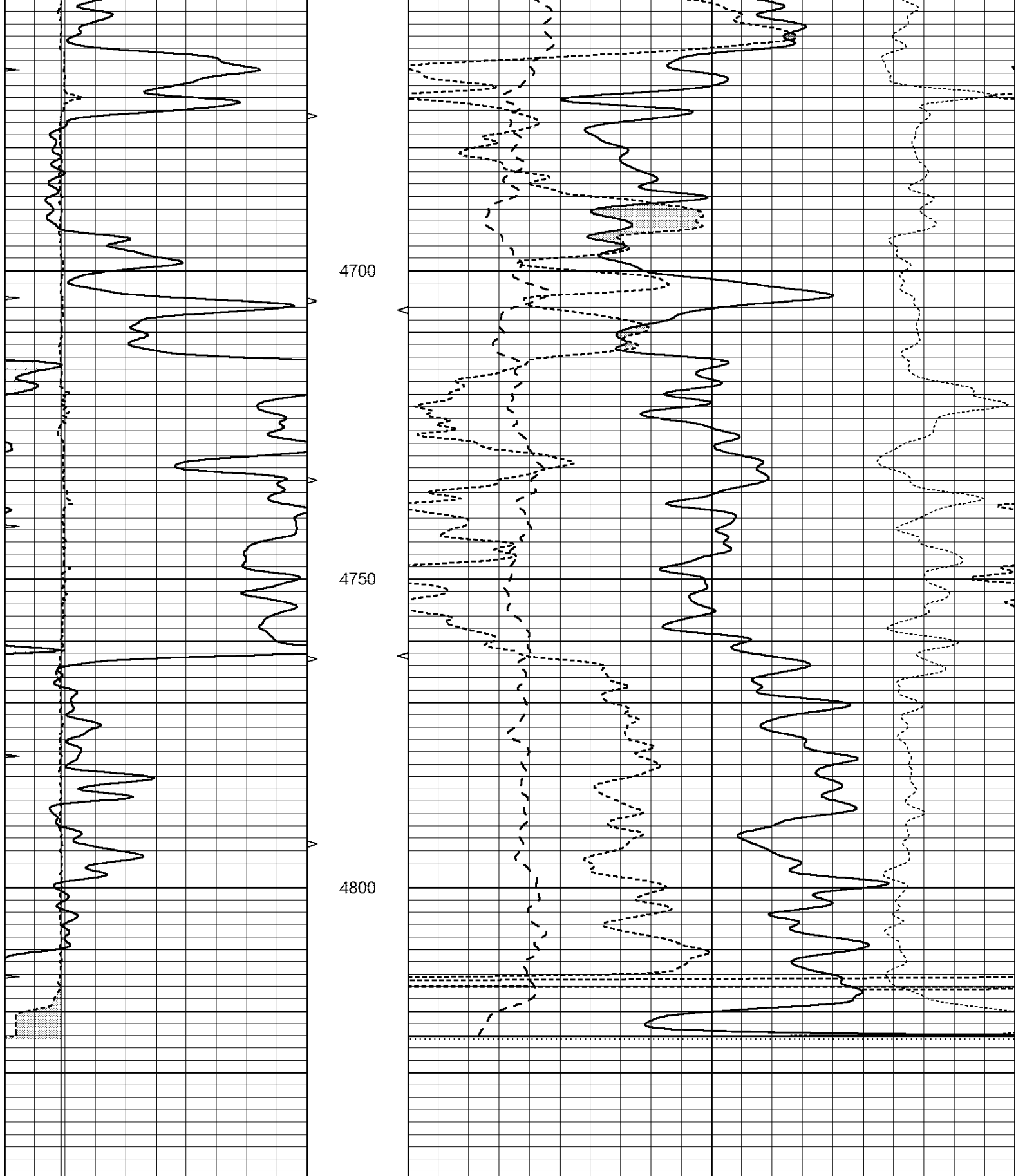












0	GAMMA RAY (GAPI)	150	ABHV	30	COMPENSATED DENSITY (pu)	-10
6	CALIPER (in)	16	10 (ft3)	0	COMPENSATED NEUTRON (pu)	-10
0	MINMK	20	TBHV	0	PE	10 -0.25
			0 (ft3)	10	CORRECTION (g/cc)	0.25