



**COMPENSATED
DENSITY/NEUTRON
PE/LOG**

Company INDIAN OIL CO., INC.
Well # C 3 BELL
Field JEM
County BARBER
State KANSAS

Company INDIAN OIL CO., INC.
Well # C 3 BELL
Field JEM
County BARBER
State KANSAS

Location: API #: 15-007-24352-0000
1400' FSL & 3300' FEL
SEC 5 TWP 30S RGE 13W
Permanent Datum GROUND LEVEL Elevation 1931
Log Measured From KELLY BUSHING 12' A.G.L.
Drilling Measured From KELLY BUSHING
Other Services CDL/CNL/ML SON
Elevation K.B. 1943
D.F. 1941
G.L. 1931

Date	06/21/19
Run Number	ONE
Depth Driller	4840
Depth Logger	4843
Bottom Logged Interval	4842
Top Log Interval	00
Casing Driller	13 3/8" @ 265
Casing Logger	265
Bit Size	7 7/8"
Type Fluid in Hole	CHEMICAL MUD
Density / Viscosity	9.4/52
pH / Fluid Loss	10.0/10.4
Source of Sample	FLOWLINE
Rm @ Meas. Temp	.3 @ 70F
Rmt @ Meas. Temp	.23 @ 70F
Rmc @ Meas. Temp	.36 @ 70F
Source of Rmf / Rmc	MEASURED
Rm @ BHT	.17 @ 123F
Time Circulation Stopped	2 HOURS
Time Logger on Bottom	///
Maximum Recorded Temperature	123F
Equipment Number	1523
Location	HAYS, KANSAS
Recorded By	GUS PFANENSTIEL
Witnessed By	AARON YOUNG

<<< Fold Here >>>

All interpretations are opinions based on inferences from electrical or other measurements and we cannot and do not guarantee the accuracy or correctness of any interpretation, and we shall not, except in the case of gross or willful negligence on our part, be liable or responsible for any loss, costs, damages, or expenses incurred or sustained by anyone resulting from any interpretation made by any of our officers, agents or employees. These interpretations are also subject to our general terms and conditions set out in our current Price Schedule.

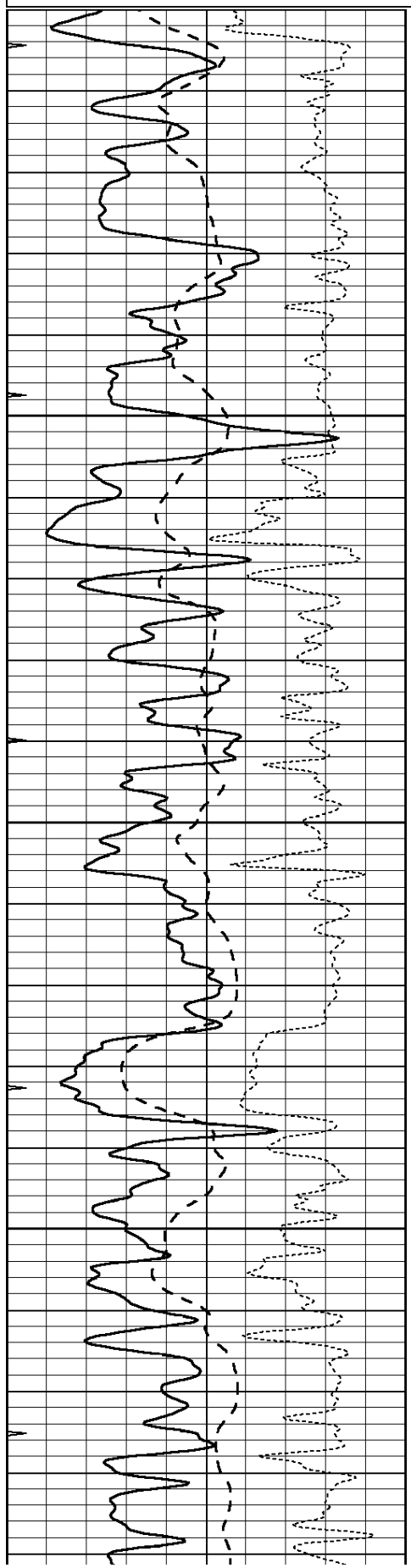
Comments

THANK YOU FOR USING ELI WIRELINE, HAYS, KS. (785) 628-6395

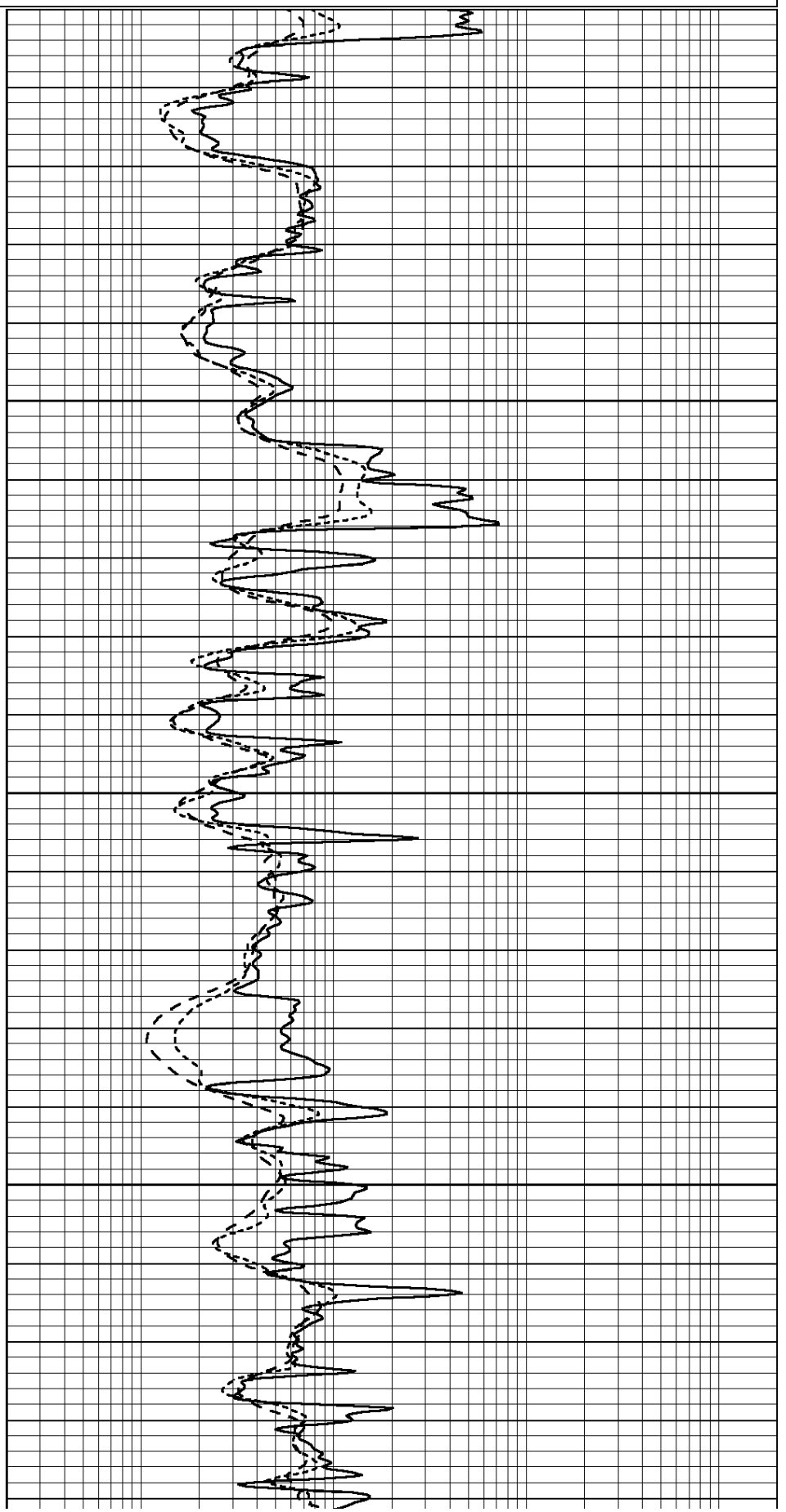
DIRECTIONS
SOUTH OF SAWYER 3 TO FALCON RD.
WEST 4 1/2 MILES

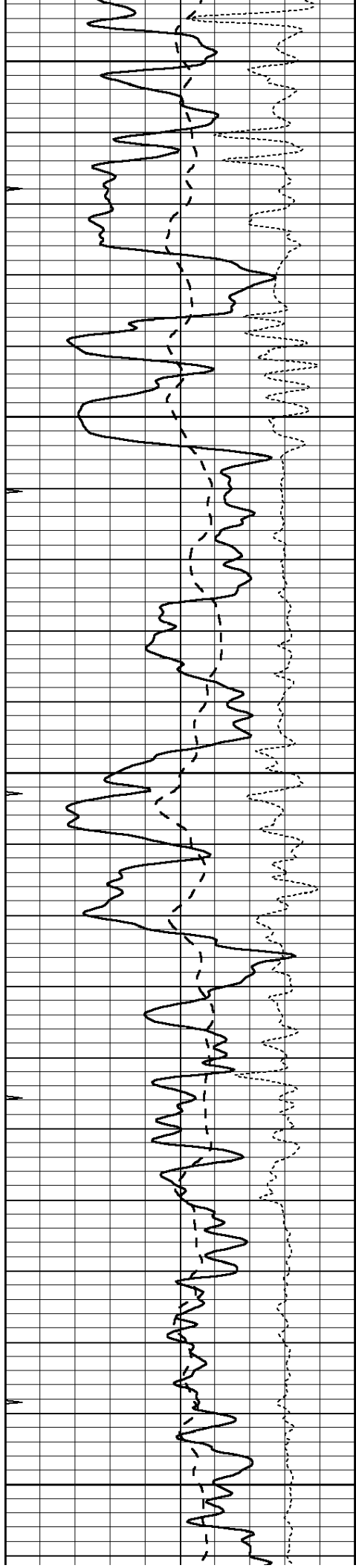
0	GAMMA RAY (GAPI)	150
-100	SP (mV)	100
-250	Rxo/Rt	50
0	MINMK	20

0.2	SHALLOW GUARD (Ohm-m)	2000
0.2	DEEP INDUCTION (Ohm-m)	2000
0.2	MEDIUM INDUCTION (Ohm-m)	2000



2700
2750
2800
2850





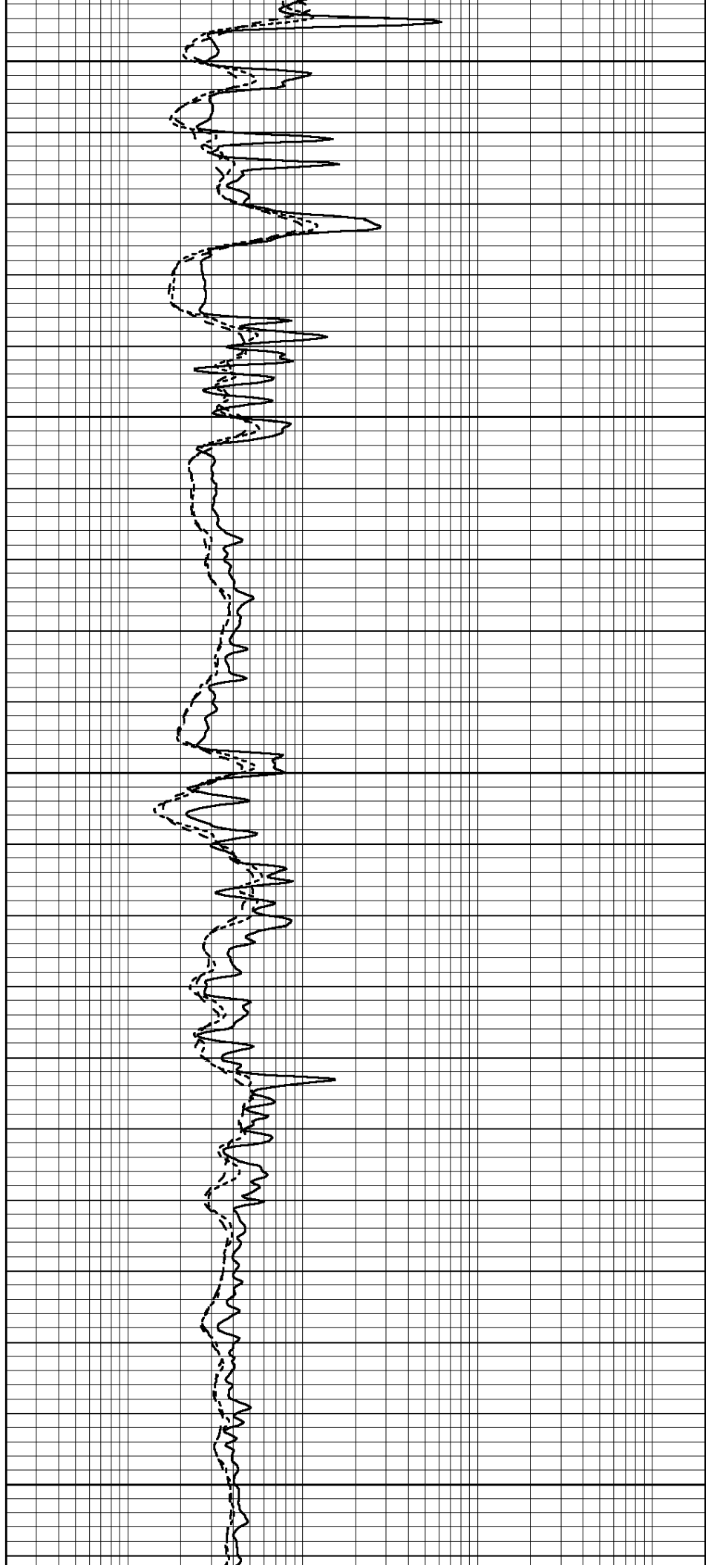
2900

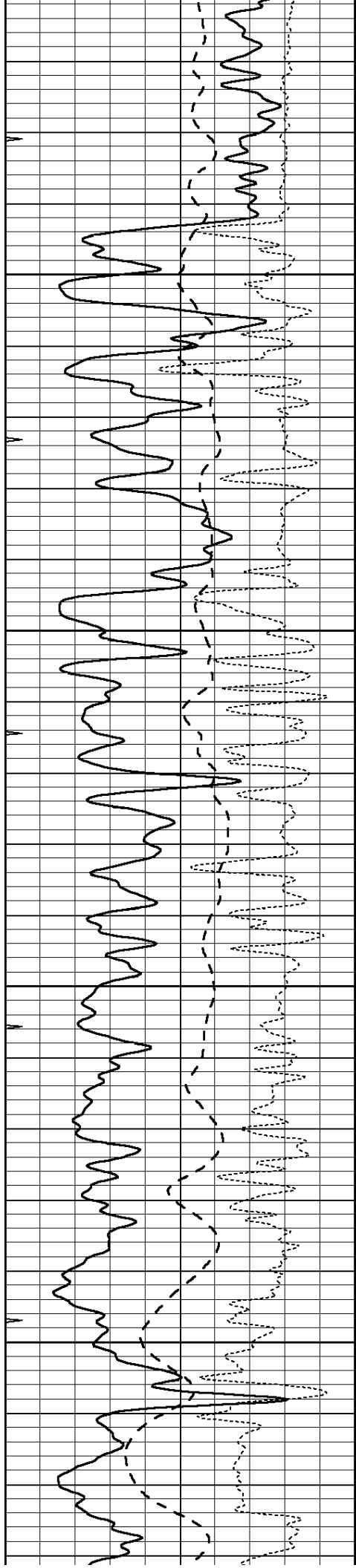
2950

3000

3050

3100



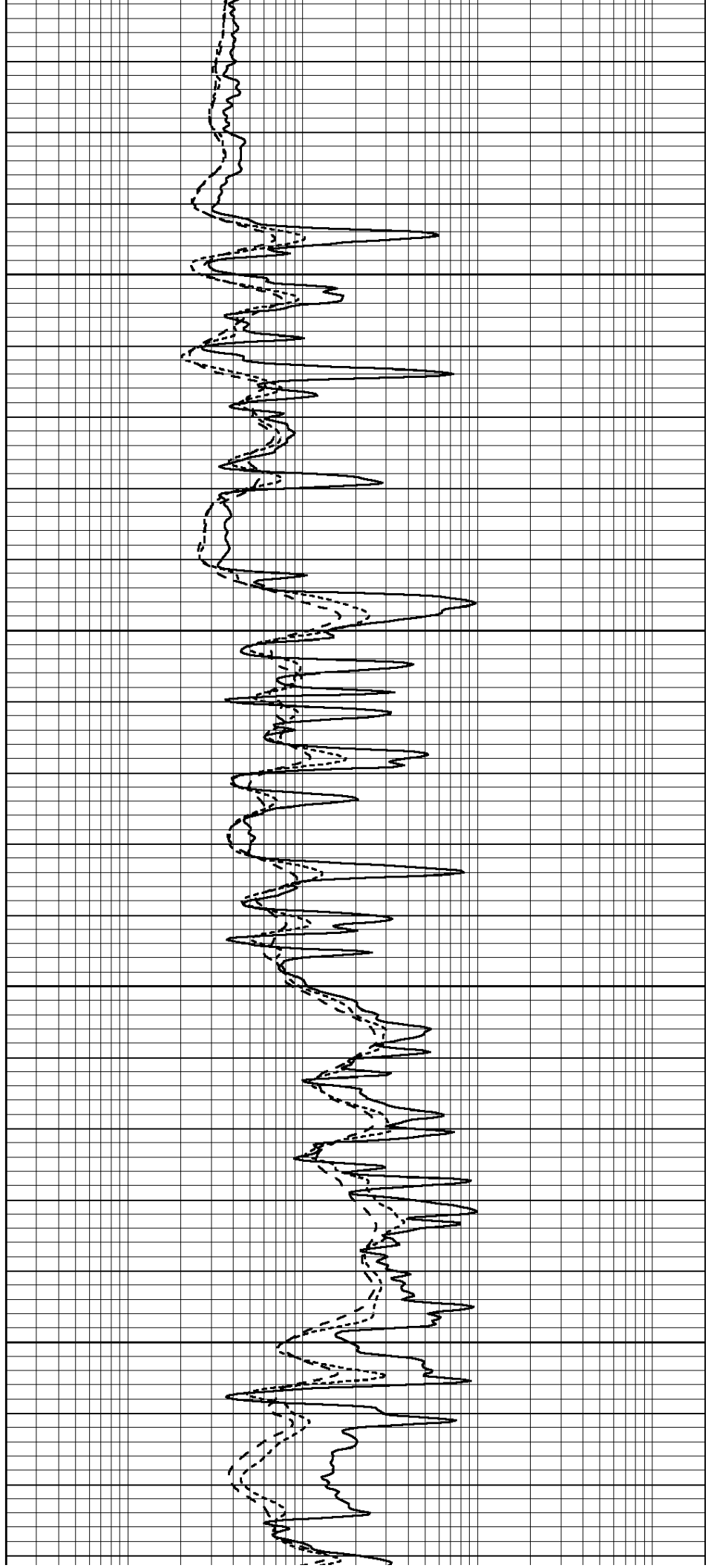


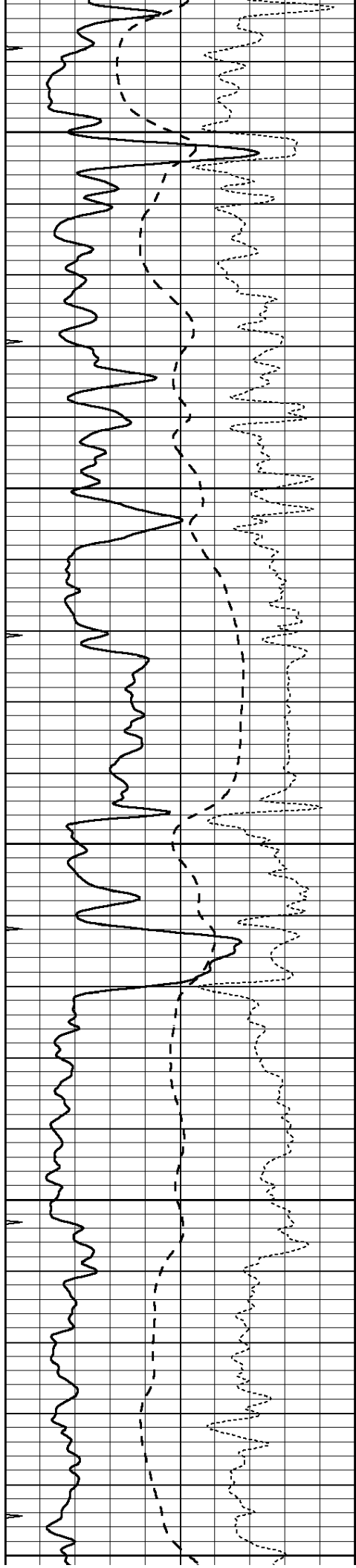
3150

3200

3250

3300





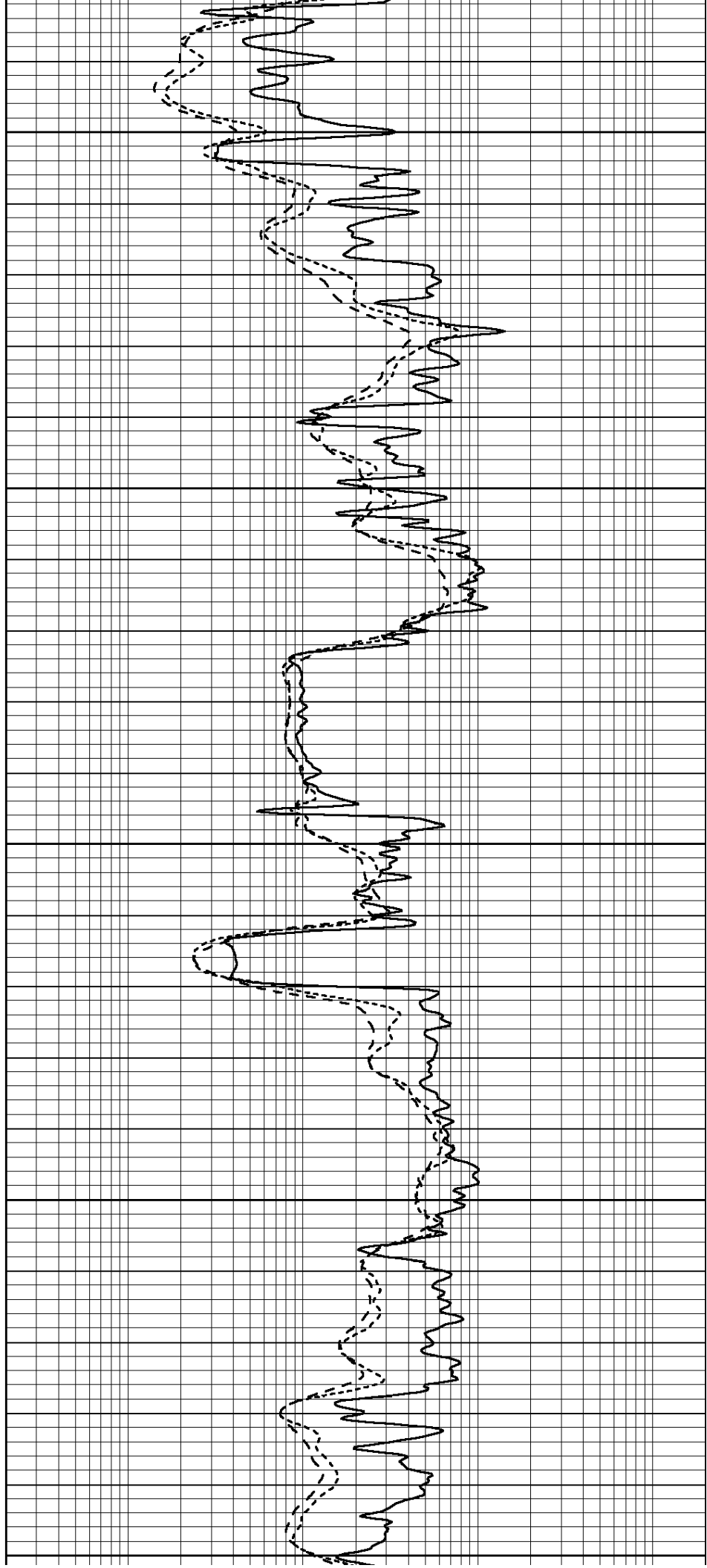
3350

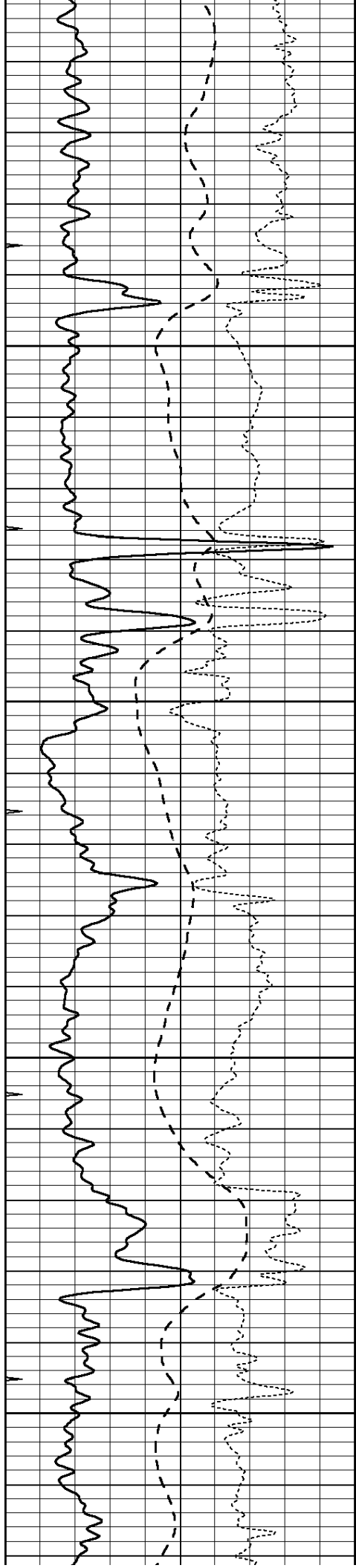
3400

3450

3500

3550



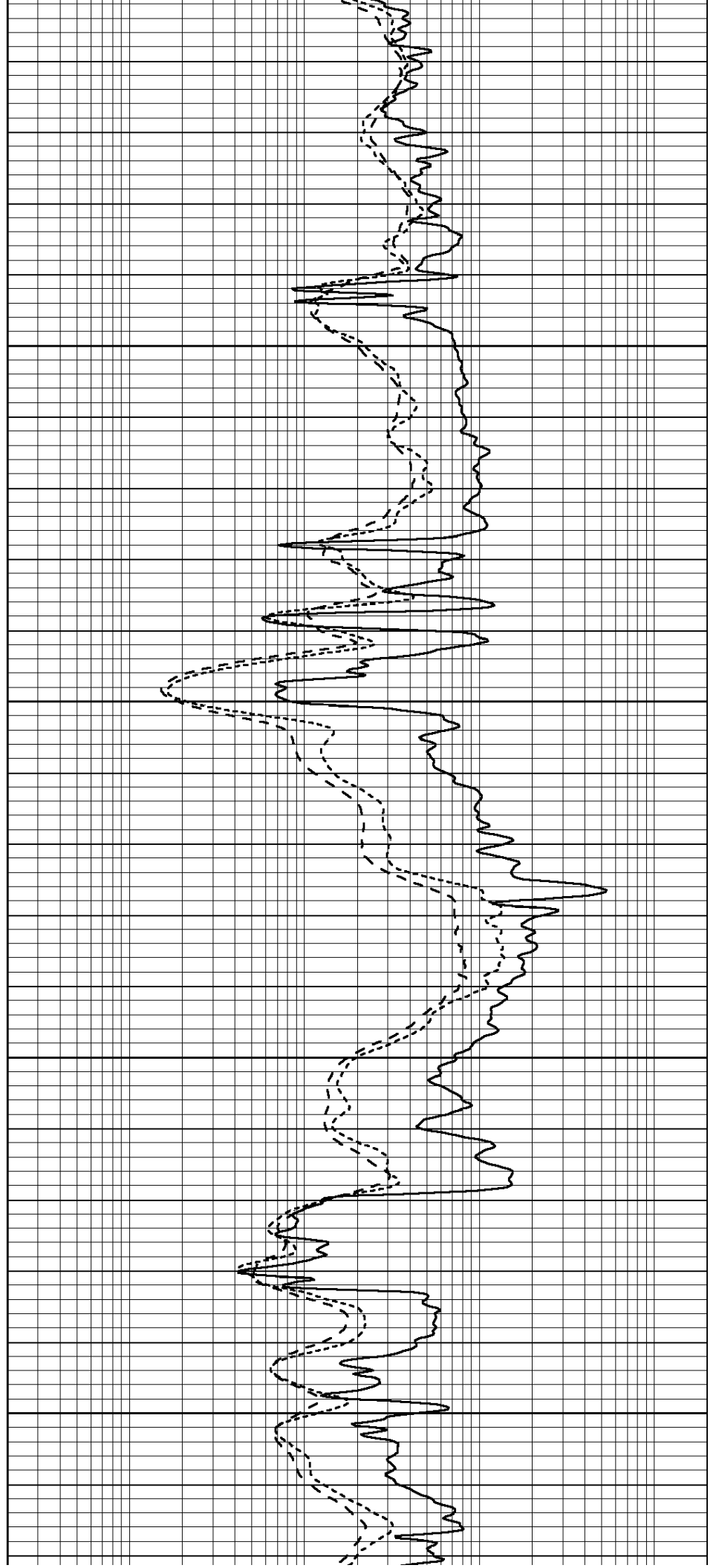


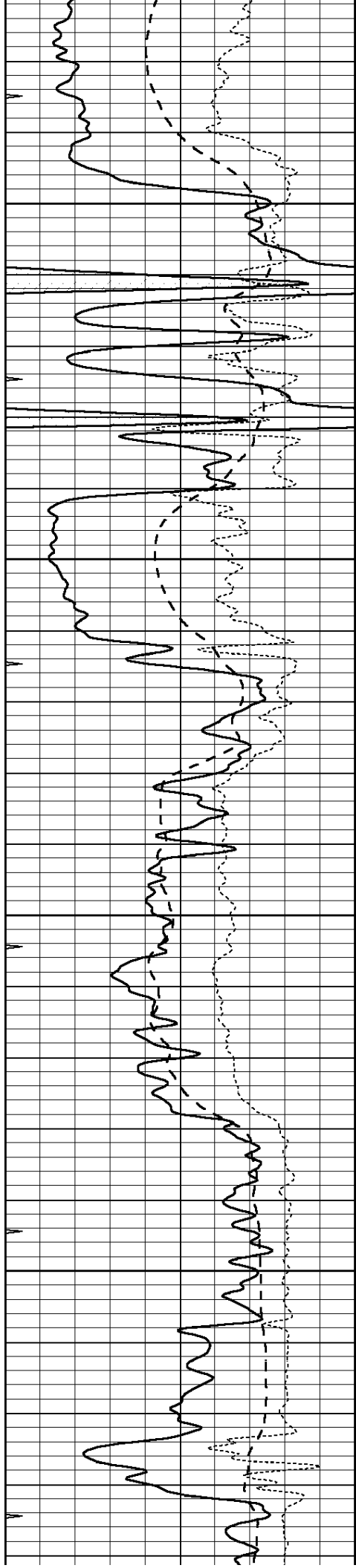
3600

3650

3700

3750



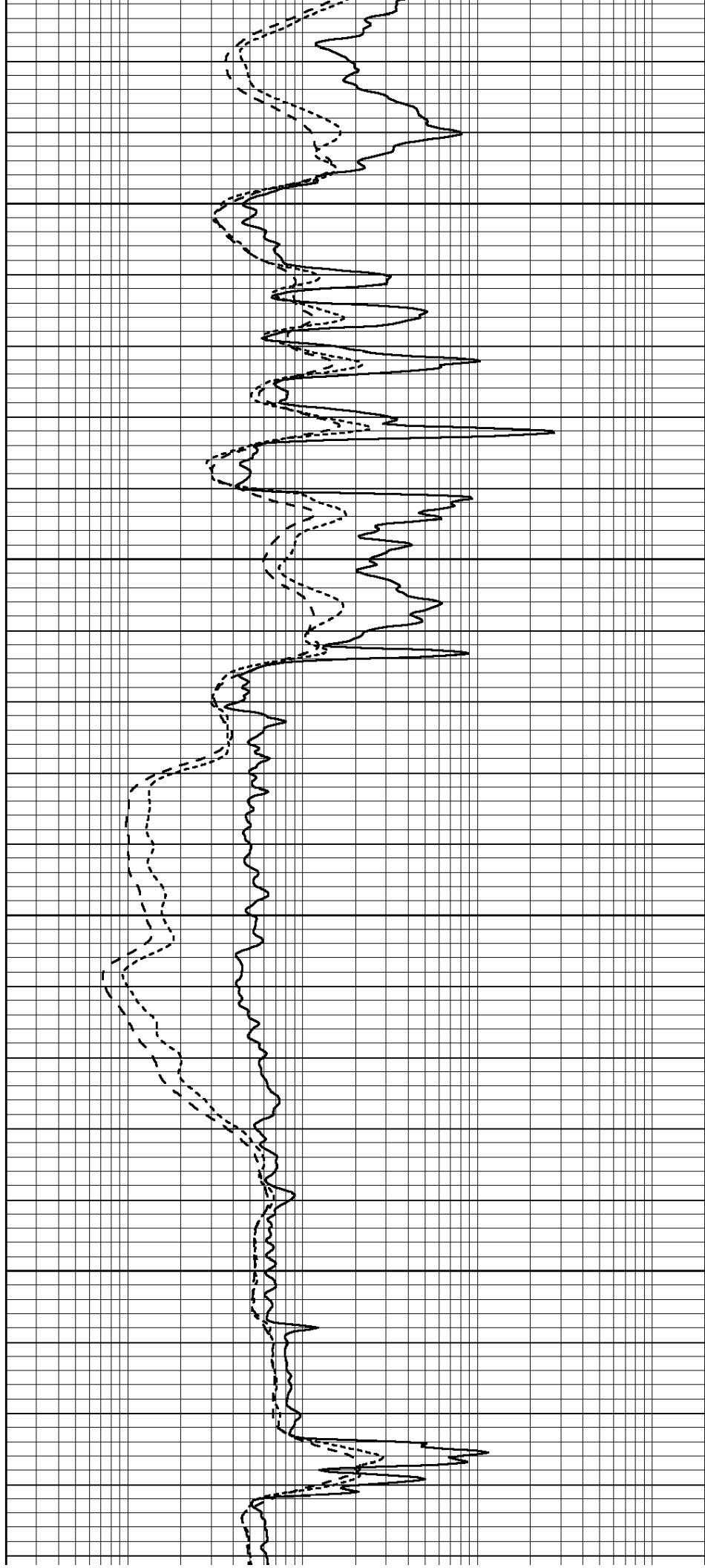


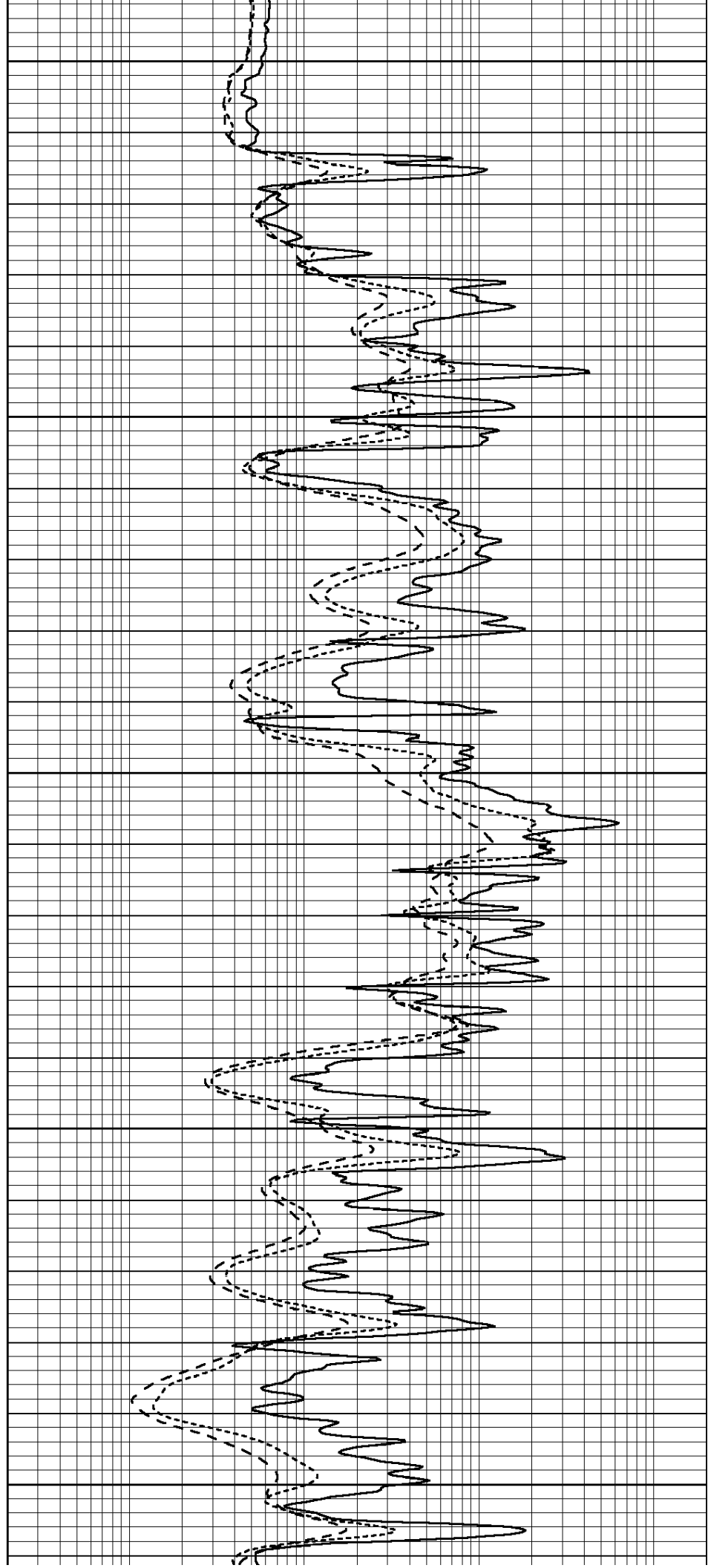
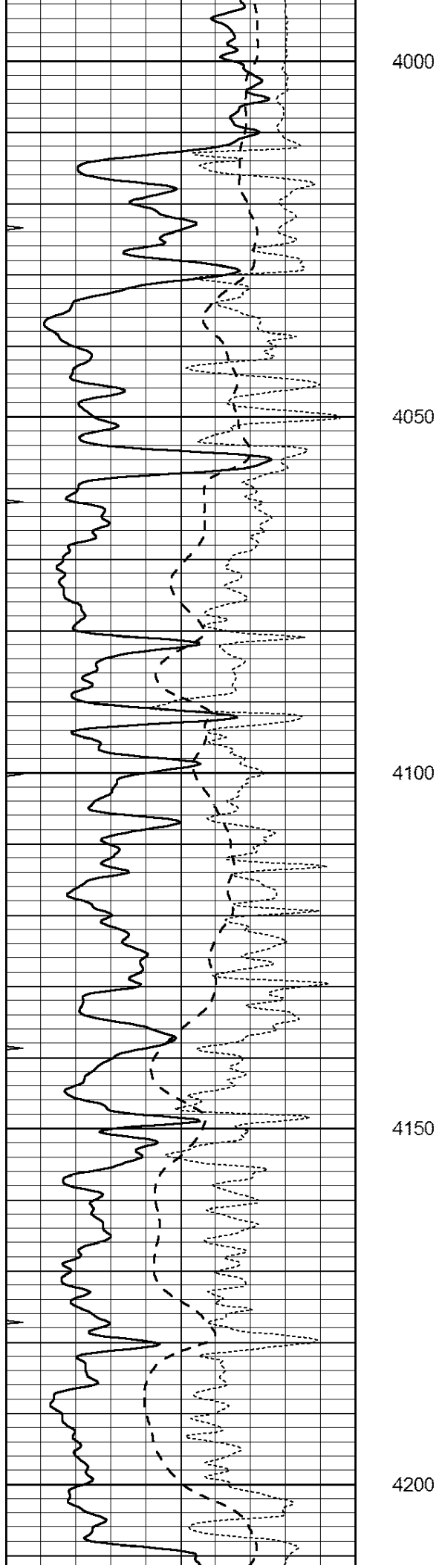
3800

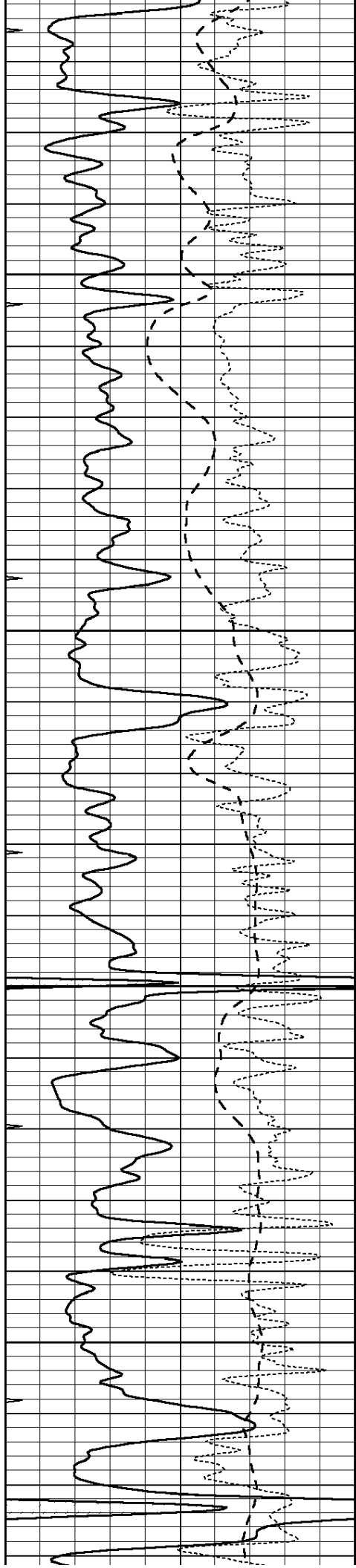
3850

3900

3950





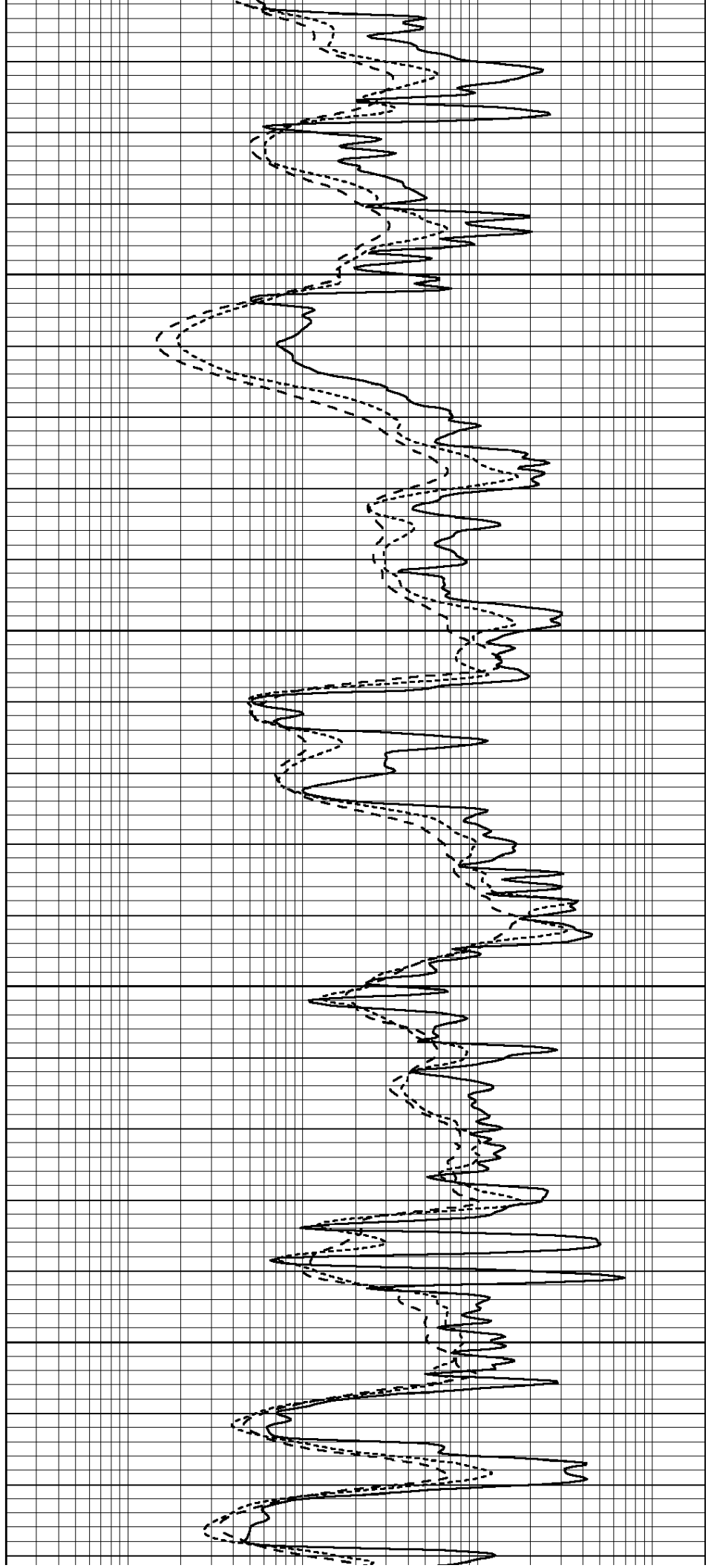


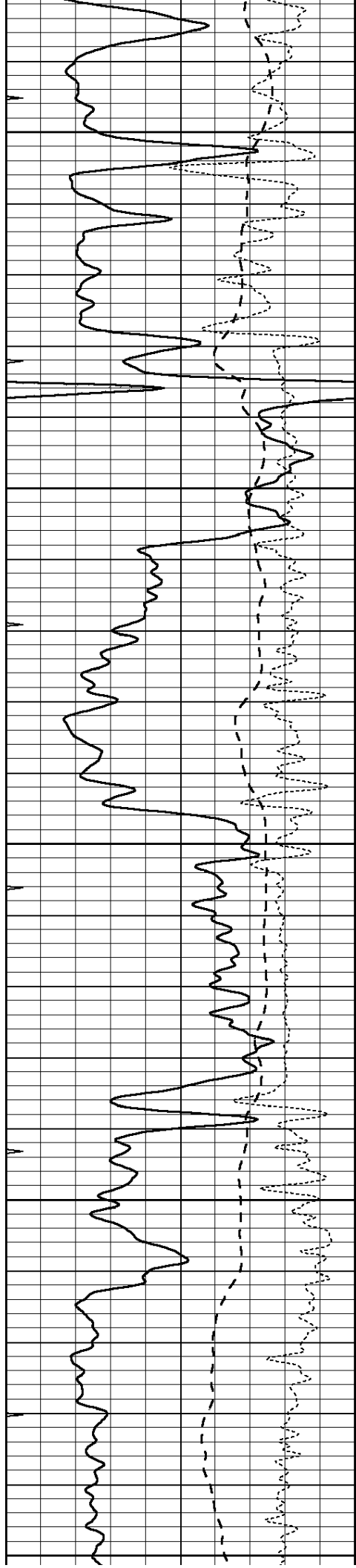
4250

4300

4350

4400





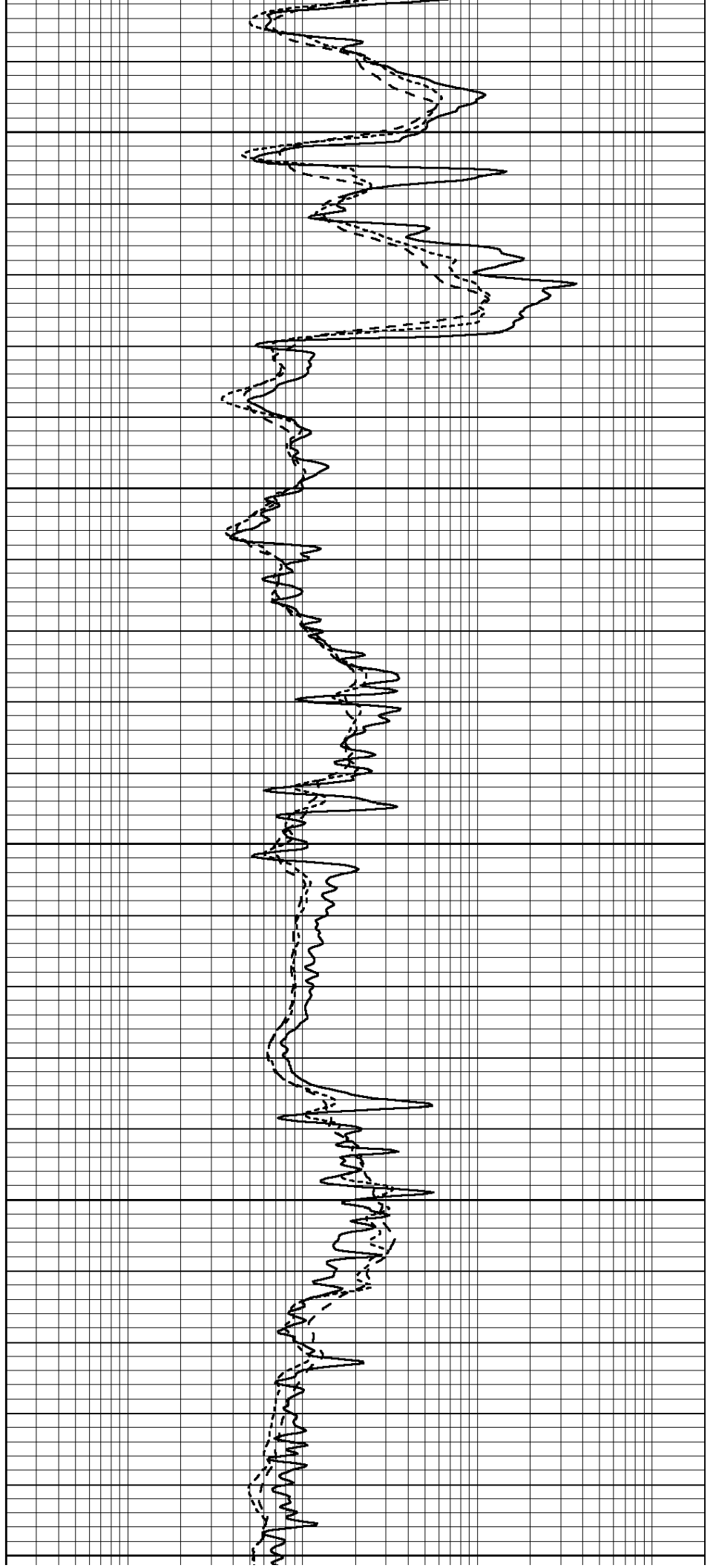
4450

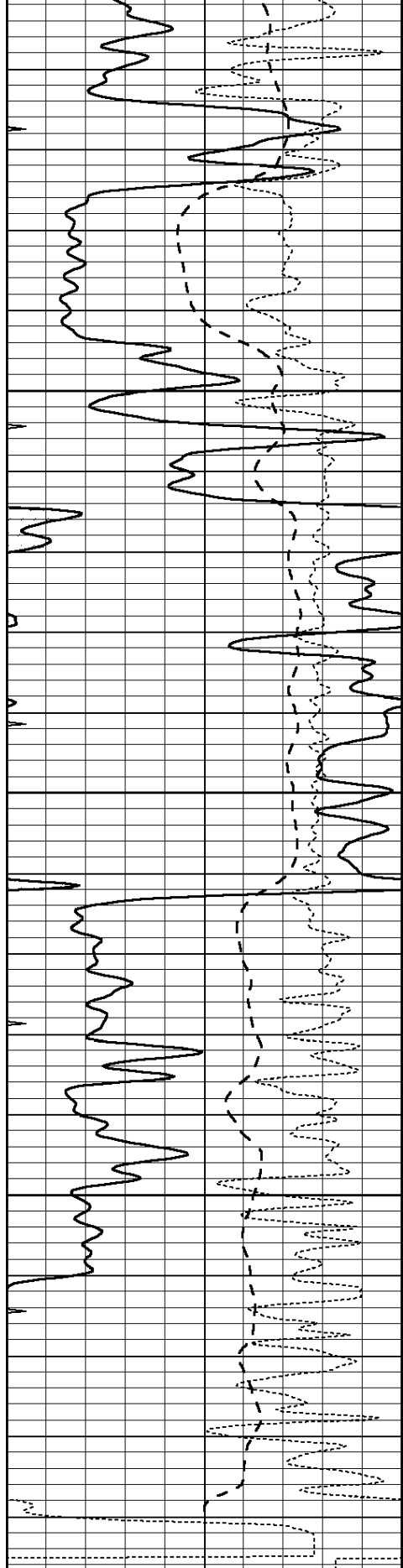
4500

4550

4600

4650



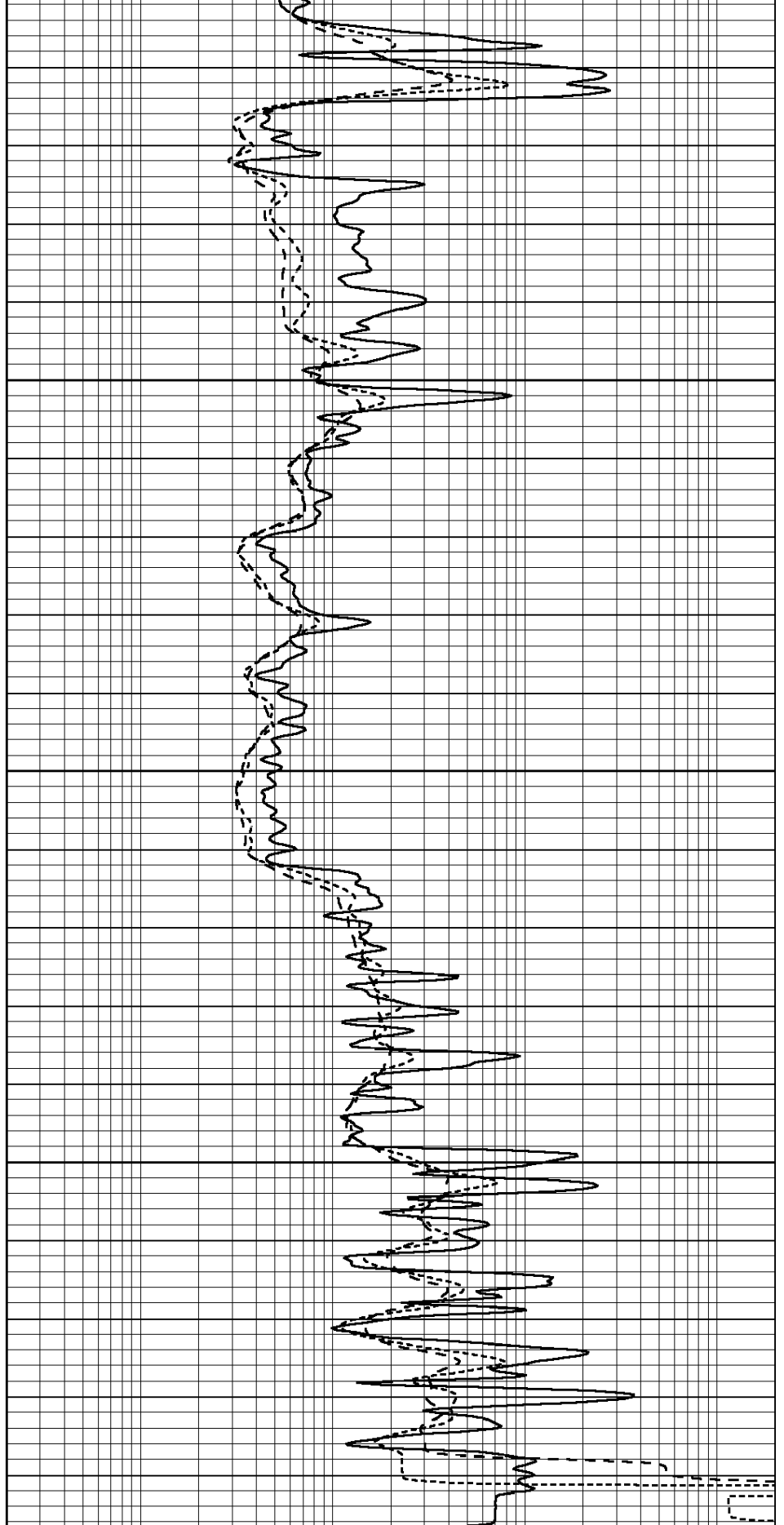


0	GAMMA RAY (GAPI)	150
-100	SP (mV)	100
-250	Rxo/Rt	50
0	MINMK	20

4700

4750

4800



0.2	SHALLOW GUARD (Ohm-m)	2000
0.2	DEEP INDUCTION (Ohm-m)	2000
0.2	MEDIUM INDUCTION (Ohm-m)	2000

