

Company	PALOMINO PETROLEUM	Well	BLACK GOLD #1
Field	UNNAMED	Company	PALOMINO PETROLEUM
County	NESS	Well	BLACK GOLD #1
State	KANSAS	Field	UNNAMED
Location	1611 FSL & 2016 FWL	AP#	15-135-2678
Log Measured From	SEP 20 2019	Other Services	
Log Measured To	SEP 20 2019		
Operator	PERF-TECH		
Client	PERF-TECH		
Project	PERF-TECH		
Job Number	1611		
Run Number	1611		
Run Date	9/20/19		
Run Time	14:00		
Run Duration	14:00		
Run Status	14#		
Run Operator	14#		
Run Recorder	14#		
Run Supervisor	14#		
Run Engineer	14#		
Run Technician	14#		
Run Operator	14#		
Run Recorder	14#		
Run Supervisor	14#		
Run Engineer	14#		
Run Technician	14#		
Run Operator	14#		
Run Recorder	14#		
Run Supervisor	14#		
Run Engineer	14#		
Run Technician	14#		

All interpretations are opinions based on inferences from electrical or other measurements and we cannot and do not guarantee the accuracy or correctness of any interpretation, and we shall not, except in the case of gross or willful negligence on our part, be liable or responsible for any loss, costs, damages, or expenses incurred or sustained by anyone resulting from any interpretation made by any of our officers, agents or employees. These interpretations are also subject to our general terms and conditions set out in our current Price Schedule.

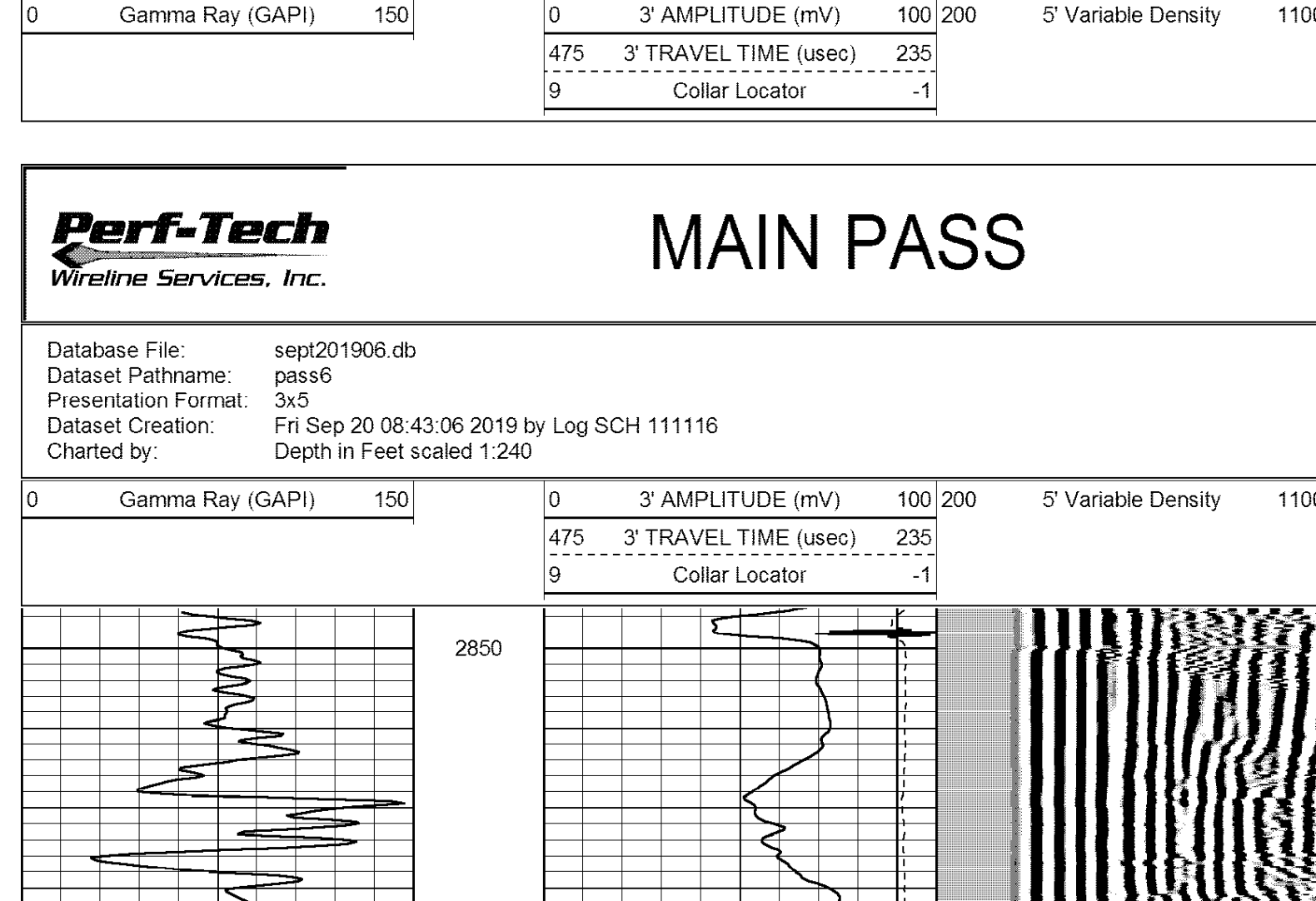
Comments

THANK YOU FOR USING
PERF-TECH WIRELINE SERVICES, INC.
785-628-3969

DIRECTIONS: NESS CITY, Ks.
WEST to LAIRD ELEVATOR,
2 1/2 SOUTH on J Rd,
WEST into

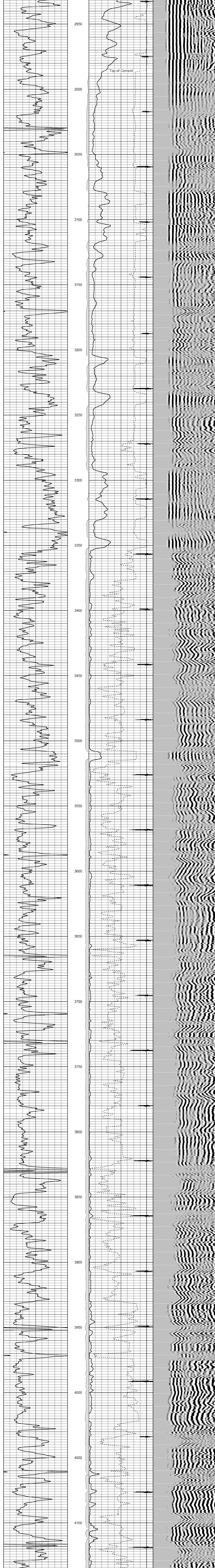
PORT COLLAR

Database File: sept201906.db
Dataset Pathname: pass7
Presentation Format: 3x5
Dataset Creation: Fri Sep 20 09 07 25 2019 by Log SCH 111116
Charted by: Depth in Feet scaled 1.240



MAIN PASS

Database File: sept201906.db
Dataset Pathname: pass6
Presentation Format: 3x5
Dataset Creation: Fri Sep 20 08 43 06 2019 by Log SCH 111116
Charted by: Depth in Feet scaled 1.240



REPEAT SECTION

Database File: sept201906.db
Dataset Pathname: pass4
Presentation Format: 3x5
Dataset Creation: Fri Sep 20 08 32 39 2019 by Log SCH 111116
Charted by: Depth in Feet scaled 1.240

