



**MICRO
RESISTIVITY
LOG**

Company Palomino Petroleum
 Well Black Gold #1
 Field Unnamed
 County Ness State Kansas

Location: API #: 15 135 26078
 1611' FSL & 2016' FWL
 SEC 10 TWP 19S RGE 25W
 Permanent Datum Ground Level Elevation 2453'
 Log Measured From KB 5' AGL
 Drilling Measured From KB
 Other Services
 CDNL
 DIL
 Elevation
 K.B. 2458'
 D.F. 2457'
 G.L. 2453'

Date	09/14/19	
Run Number	TWO	
Depth Driller	4620'	
Depth Logger	4620'	
Bottom Logged Interval	4618'	
Top Log Interval	3500'	
Casing Driller	8 5/8" @ 687'	
Casing Logger	687'	
Bit Size	7 7/8"	
Type Fluid in Hole	Chemical	Chlorides 3.300 PPM
Density / Viscosity	9.0/53	
pH / Fluid Loss	10.5/6.4	
Source of Sample	Pit	
Rm @ Meas. Temp	1.7 @ 78degf	
Rmt @ Meas. Temp	1.4 @ 78degf	
Rmc @ Meas. Temp	2.2 @ 78degf	
Source of Rmf / Rmc	Calculated	
Rm @ BHT	1.1 @ 119degf	
Time Circulation Stopped	11:45 p.m.	
Time Logger on Bottom	4:51 a.m.	
Maximum Recorded Temperature	119degf	
Equipment Number	T605	
Location	Hays, KS	
Recorded By	Casey Patterson	
Witnessed By	Mr. Andrew Stenzel	

<<< Fold Here >>>

All interpretations are opinions based on inferences from electrical or other measurements and we cannot and do not guarantee the accuracy or correctness of any interpretation, and we shall not, except in the case of gross or willful negligence on our part, be liable or responsible for any loss, costs, damages, or expenses incurred or sustained by anyone resulting from any interpretation made by any of our officers, agents or employees. These interpretations are also subject to our general terms and conditions set out in our current Price Schedule.

Comments

Ness City, KS 96 Hwy. west 8.5 mi. to J RD., Then South 2.5 mi on J RD.
 West into Location through Cattle Guard on Lease Road past existing well

Thanks You For Using Gemini Wireline LLC
 785-625-1182

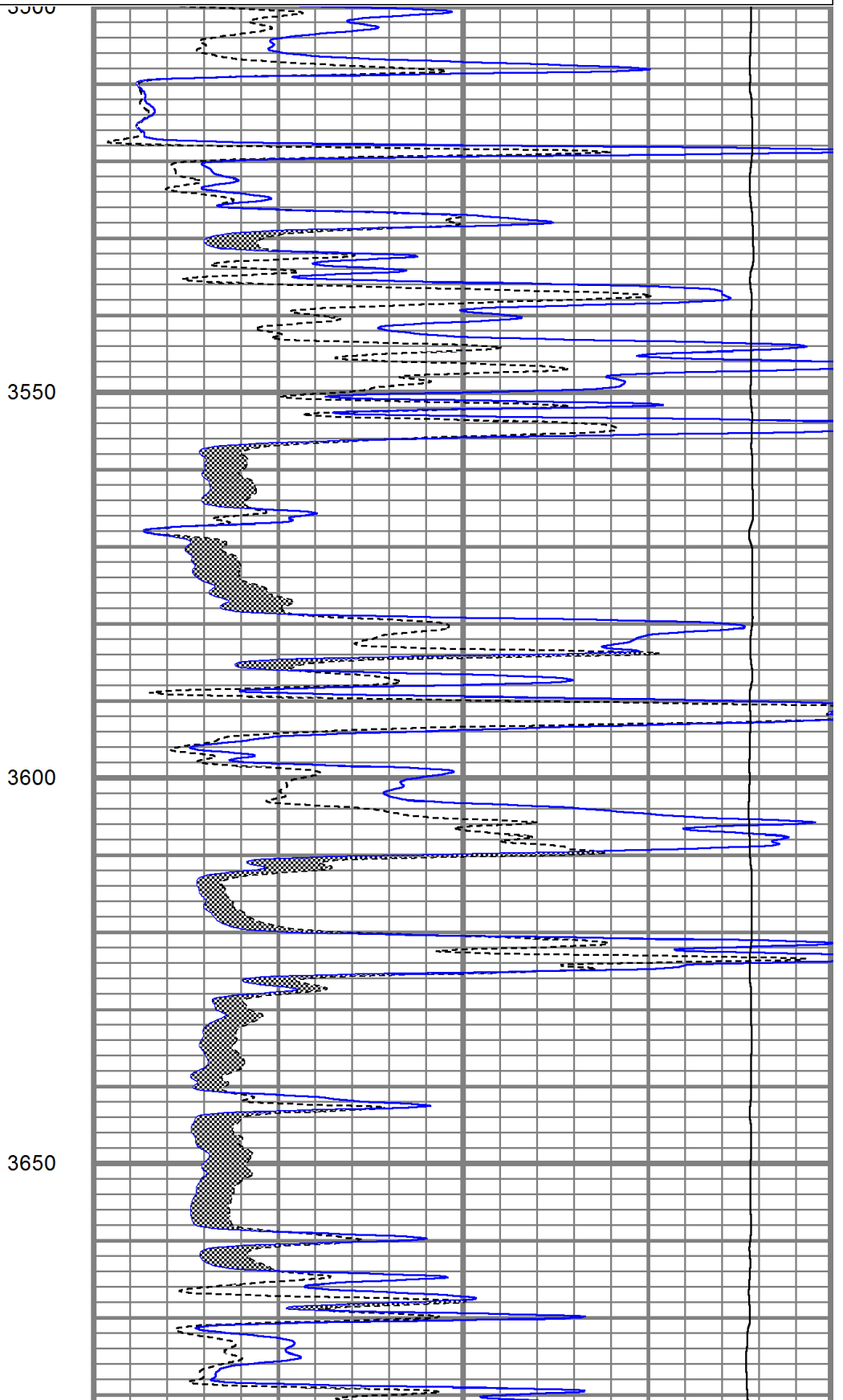
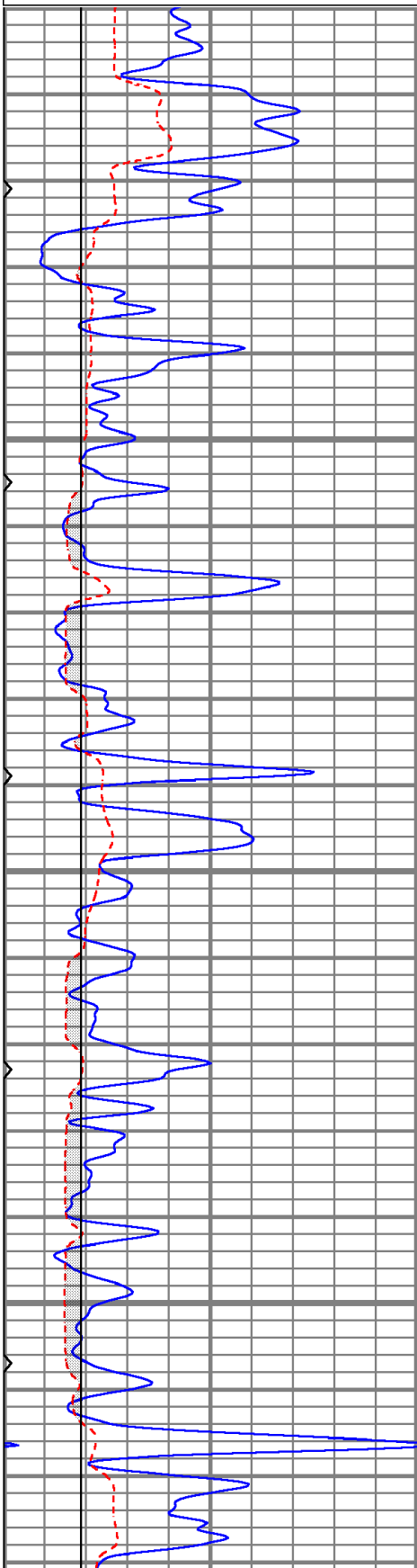


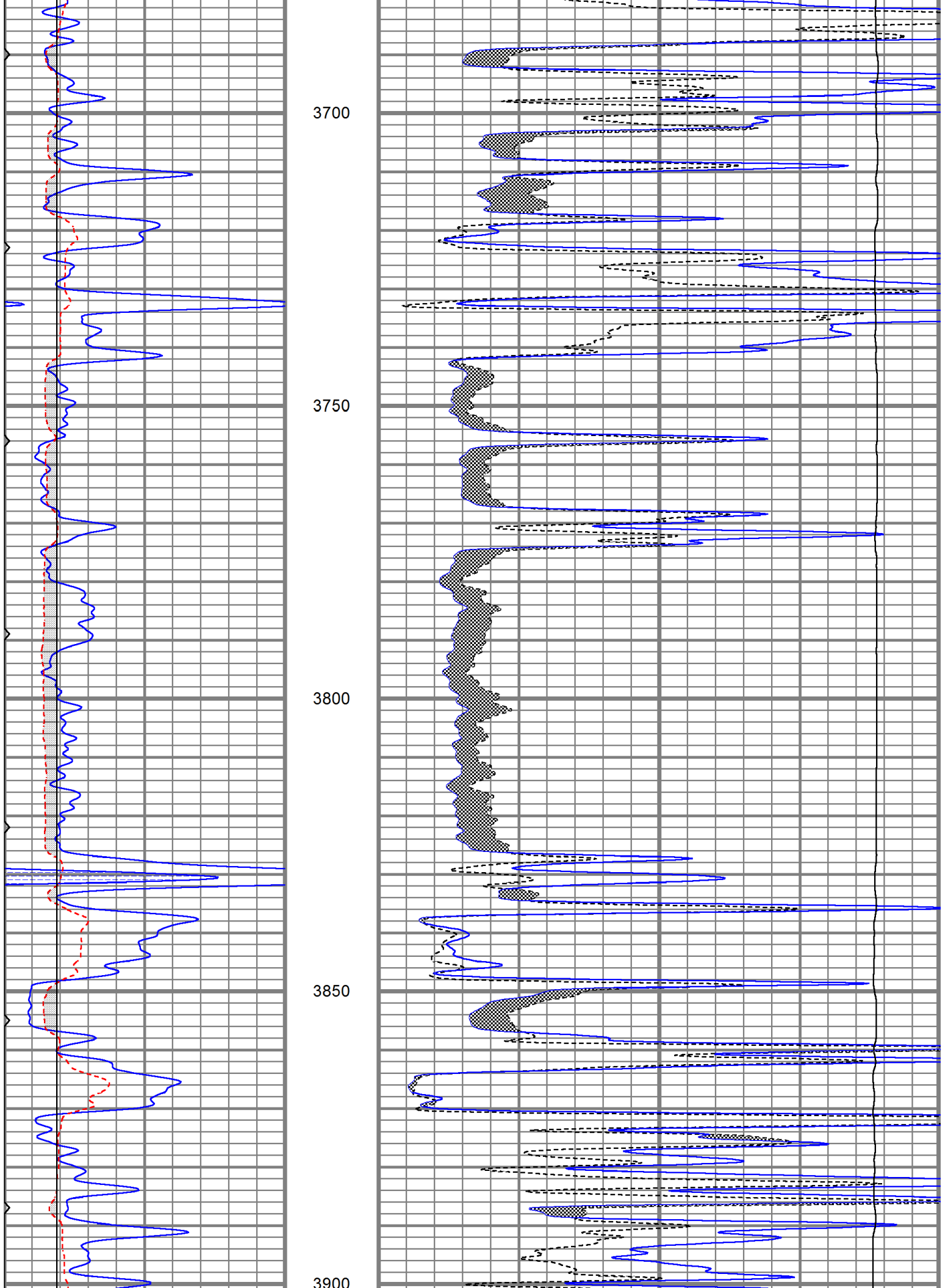
MAIN PASS

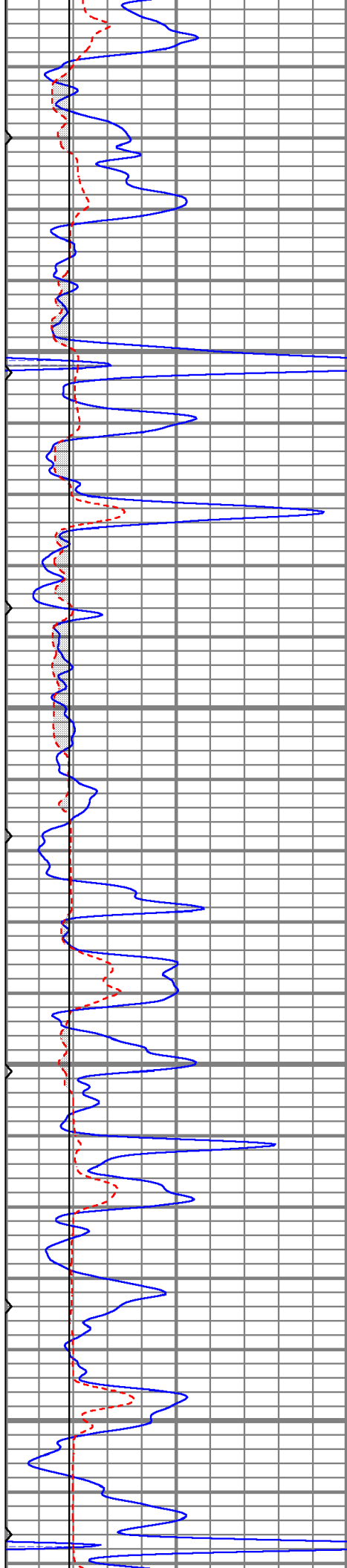
Database File ppblackgold#1oh.db
 Dataset Pathname pass6
 Presentation Format kml
 Dataset Creation Sat Sep 14 05:05:04 2019
 Charted by Depth in Feet scaled 1:240

0	GR (GAPI)	150
6	MCAL (in)	16
6	BOREID (in)	16
0	MINMK	50

0	MN 2" (Ohm-m)	20
0	MI 1" (Ohm-m)	20
10000	LTEN (lb)	0





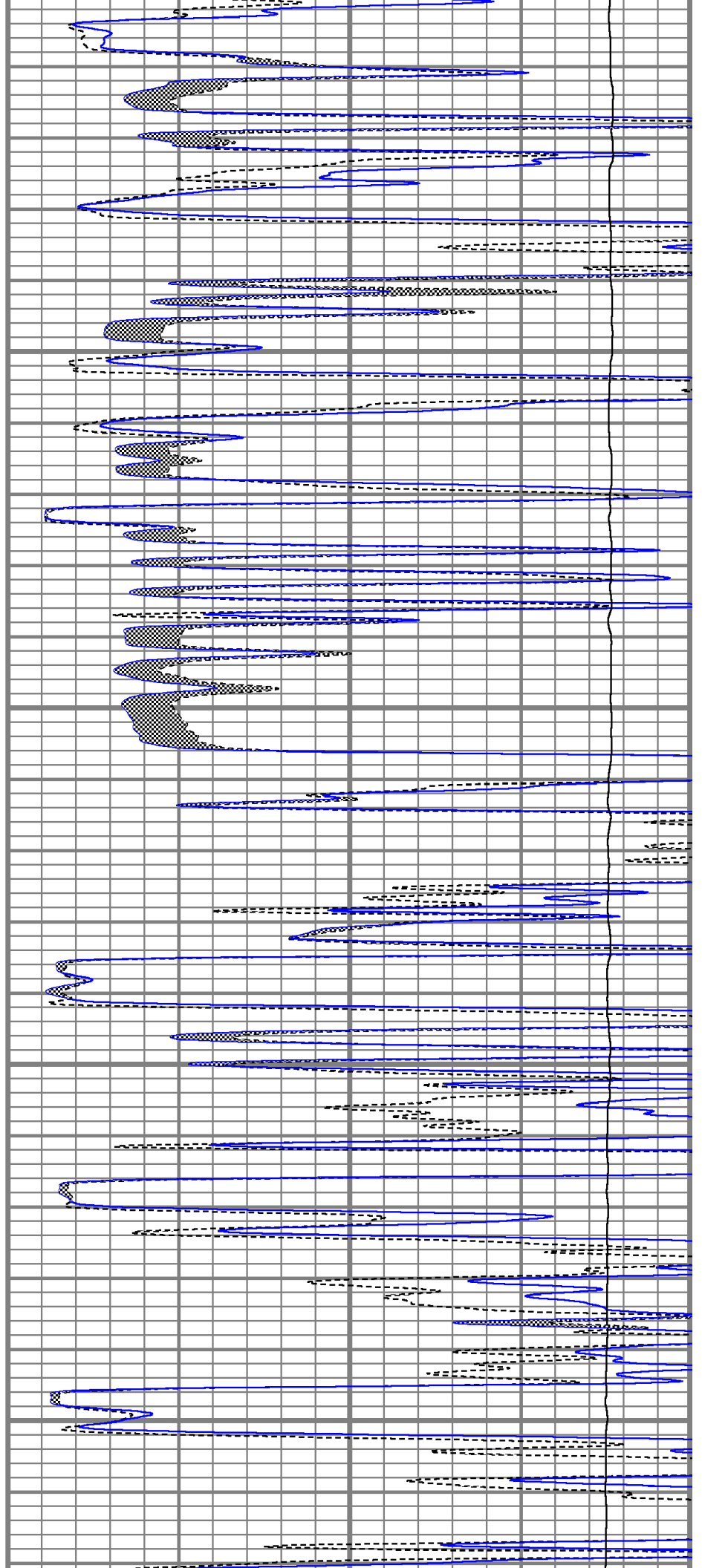


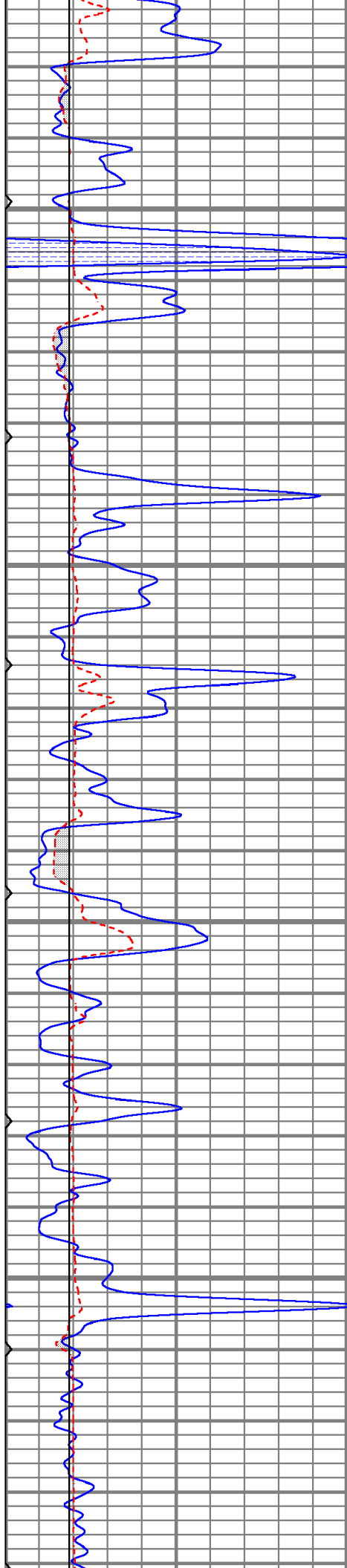
3950

4000

4050

4100



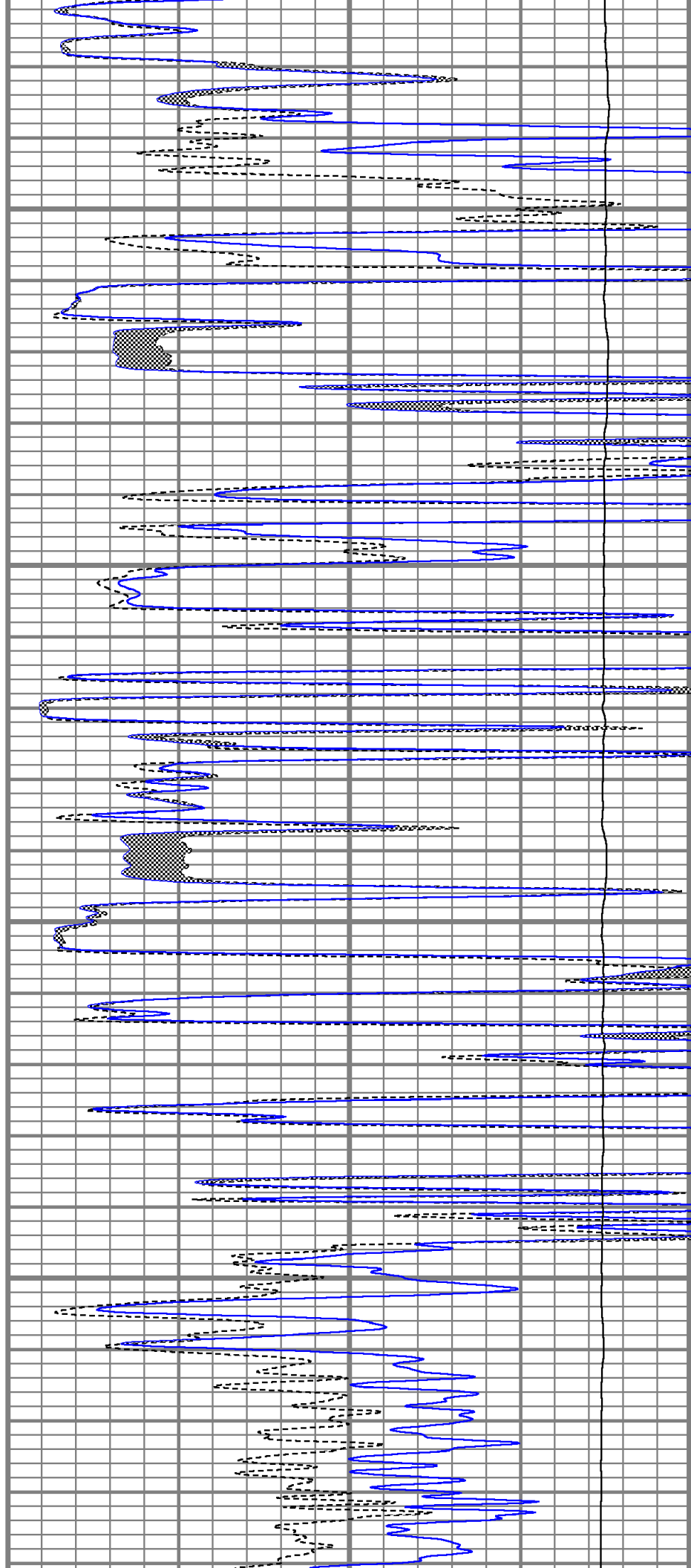


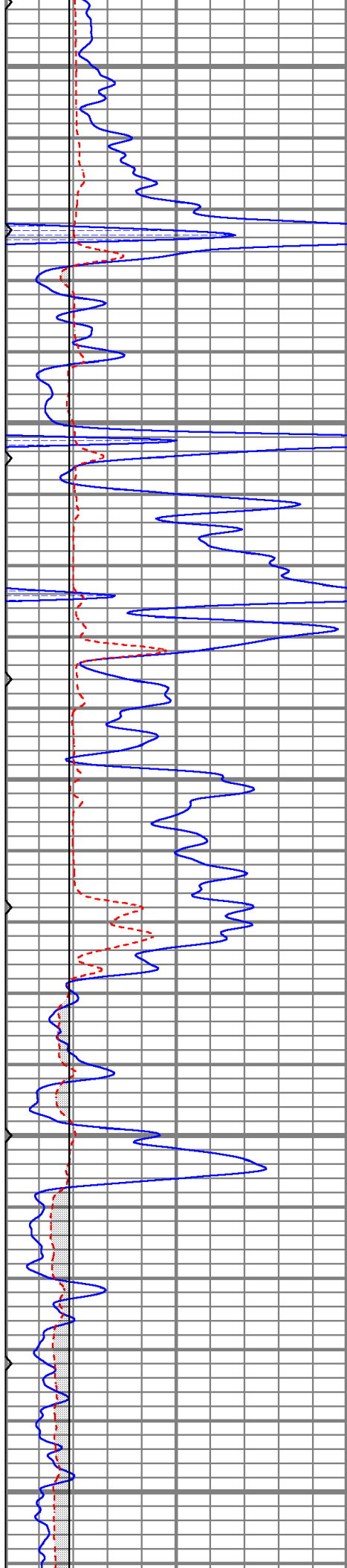
4150

4200

4250

4300





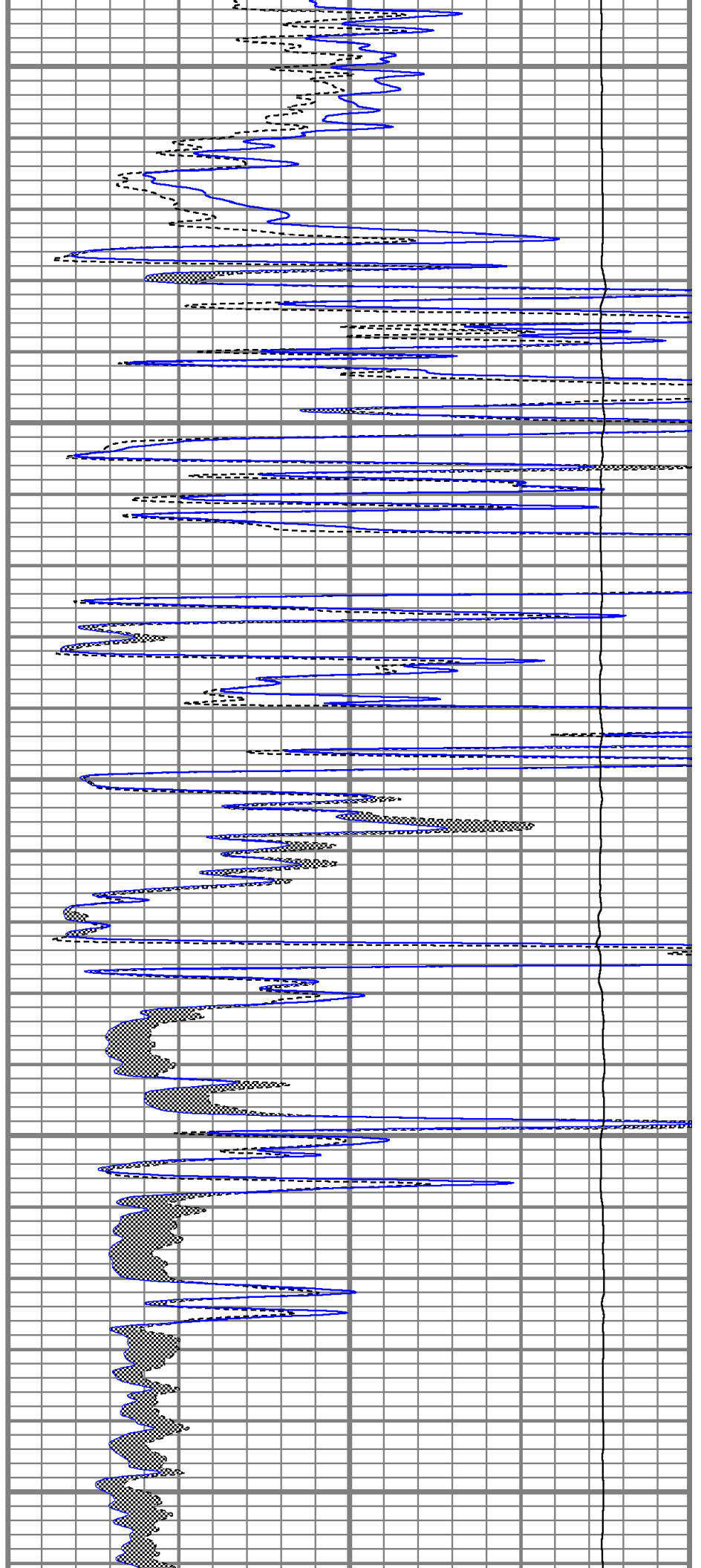
4350

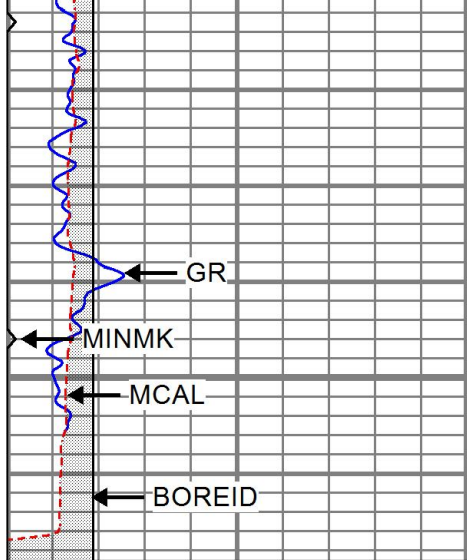
4400

4450

4500

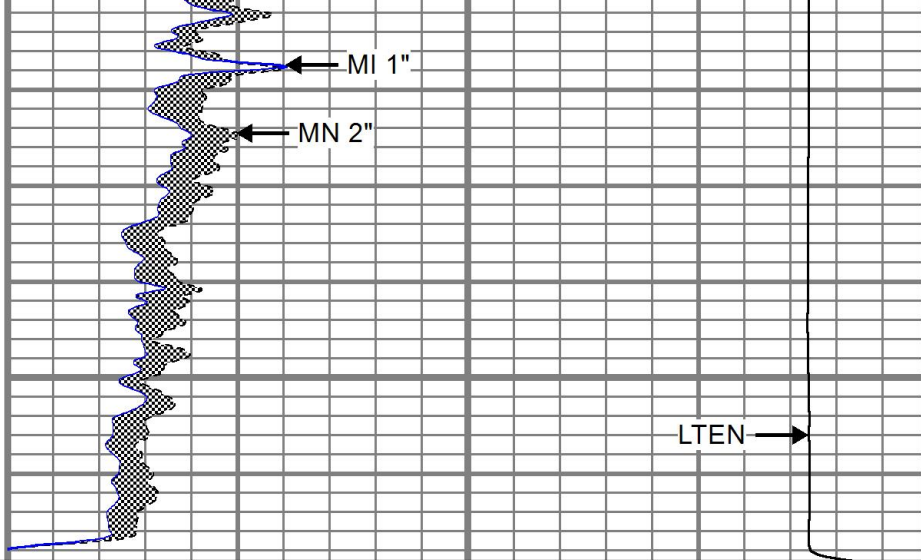
4550





0	GR (GAPI)	150
6	MCAL (in)	16
6	BOREID (in)	16
0	MINMK	50

4600



0	MN 2" (Ohm-m)	20
0	MI 1" (Ohm-m)	20
10000	LTEN (lb)	0

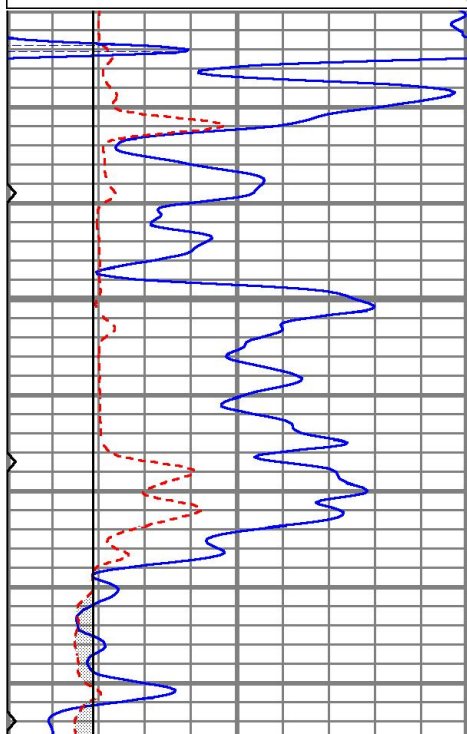


REPEAT SECTION

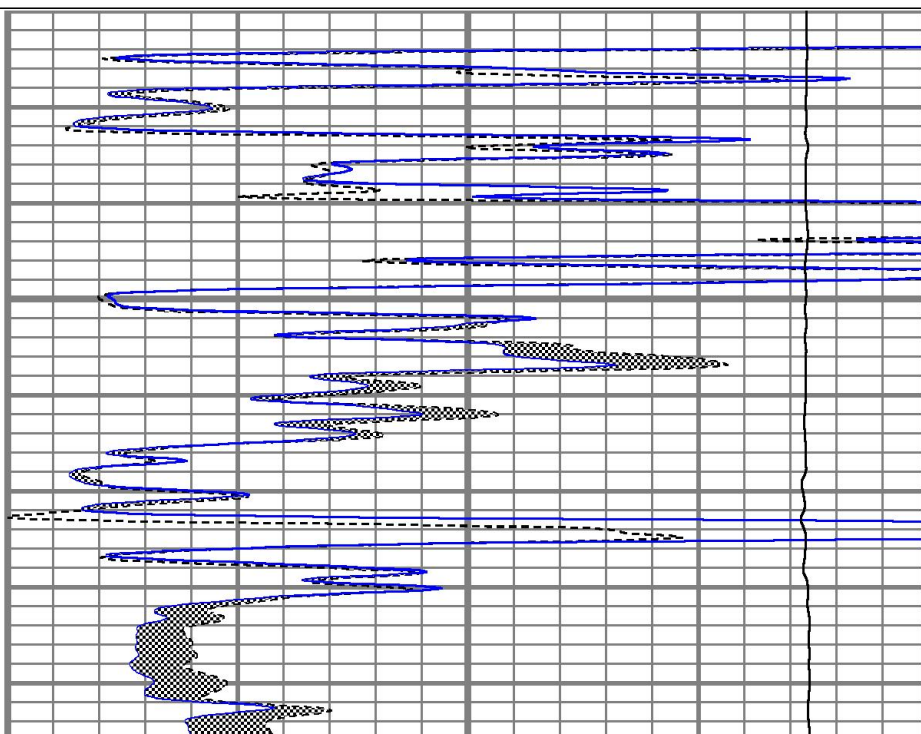
Database File ppblackgold#1oh.db
 Dataset Pathname pass5.1
 Presentation Format kml
 Dataset Creation Sat Sep 14 05:03:01 2019
 Charted by Depth in Feet scaled 1:240

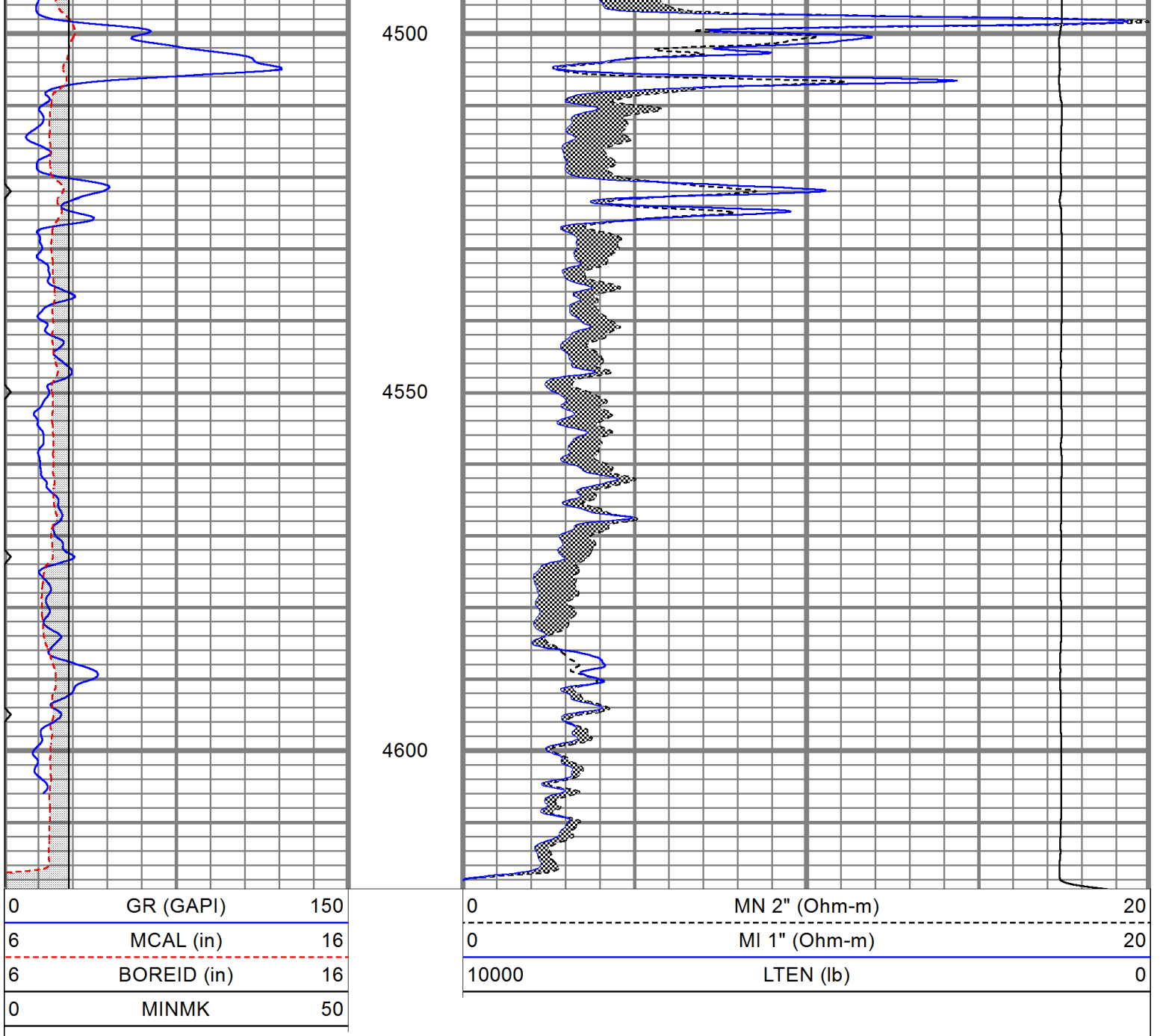
0	GR (GAPI)	150
6	MCAL (in)	16
6	BOREID (in)	16
0	MINMK	50

0	MN 2" (Ohm-m)	20
0	MI 1" (Ohm-m)	20
10000	LTEN (lb)	0



4450





Calibration Report

Database File ppblackgold#1oh.db
 Dataset Pathname pass6
 Dataset Creation Sat Sep 14 05:05:04 2019

Microlog Calibration Report

Serial-Model: 9151-Gerhart
 Performed: Sat Sep 14 04:46:29 2019

	Readings				References			Results	
	Zero	Cal			Zero	Cal		m	b
Normal	0.0075	0.4710	V	0.0000	10.0000	Ohm-m	21.5751	-0.1618	
Inverse	0.0076	0.6163	V	0.0000	10.0000	Ohm-m	16.4288	-0.1247	
Caliper	1.0212	2.0456	V	7.9000	15.0000	in	6.9308	0.8221	

Gamma Ray Calibration Report

Serial Number: 2000

Tool Model: P2000
 Performed: Sun May 06 10:04:13 2018
 Calibrator Value: 1.0 GAPI
 Background Reading: 0.0 cps
 Calibrator Reading: 1.0 cps
 Sensitivity: 0.7000 GAPI/cps

Sensor	Offset (ft)	Schematic	Description	Length (ft)	O.D. (in)	Weight (lb)
GR	10.88		CHD-None	0.75	1.50	5.00
MCAL	1.83		GR-P2000 (2000)	3.67	3.25	40.00
MI	1.83		ML-Gerhart (9151)	9.46	4.00	125.00
MN	1.83		Gerhart Micro			

Dataset: ppblackgold#1oh.db: field/well/run1/pass6
 Total length: 13.88 ft
 Total weight: 170.00 lb
 O.D.: 4.00 in