



**DUAL
INDUCTION
LOG**

Company Palomino Petroleum
 Well Black Gold #1
 Field Unnamed
 County Ness State Kansas

Location: API #: 15 135 26078
 1611' FSL & 2016' FWL
 SEC 10 TWP 19S RGE 25W
 Permanent Datum Ground Level Elevation 2453'
 Log Measured From KB 5' AGL
 Drilling Measured From KB
 Other Services
 CDNL
 ML
 Elevation
 K.B. 2458'
 D.F. 2457'
 G.L. 2453'

Date	09/14/19	
Run Number	One	
Depth Driller	4620'	
Depth Logger	4620'	
Bottom Logged Interval	4618'	
Top Log Interval	670'	
Casing Driller	8 5/8" @ 687'	
Casing Logger	687'	
Bit Size	7 7/8"	
Type Fluid in Hole	Chemical	Chlorides 3.300 PPM
Density / Viscosity	9.0/53	
pH / Fluid Loss	10.5/6.4	
Source of Sample	Pit	
Rm @ Meas. Temp	1.7@78degf	
Rmt @ Meas. Temp	1.4@78degf	
Rmc @ Meas. Temp	2.2@78degf	
Source of Rmf / Rmc	Calculated	
Rm @ BHT	1.1@119degf	
Time Circulation Stopped	11:45 p.m.	
Time Logger on Bottom	2:28 a.m.	
Maximum Recorded Temperature	119degf	
Equipment Number	T605	
Location	Hays, KS	
Recorded By	Casey Patterson	
Witnessed By	Mr. Andrew Stenzel	

<<< Fold Here >>>

All interpretations are opinions based on inferences from electrical or other measurements and we cannot and do not guarantee the accuracy or correctness of any interpretation, and we shall not, except in the case of gross or willful negligence on our part, be liable or responsible for any loss, costs, damages, or expenses incurred or sustained by anyone resulting from any interpretation made by any of our officers, agents or employees. These interpretations are also subject to our general terms and conditions set out in our current Price Schedule.

Comments

Ness City, KS 96 Hwy. west 8.5 mi. to J RD., Then South 2.5 mi on J RD.
 West into Location through Cattle Guard on Lease Road past existing well

Thanks You For Using Gemini Wireline LLC
 785-625-1182



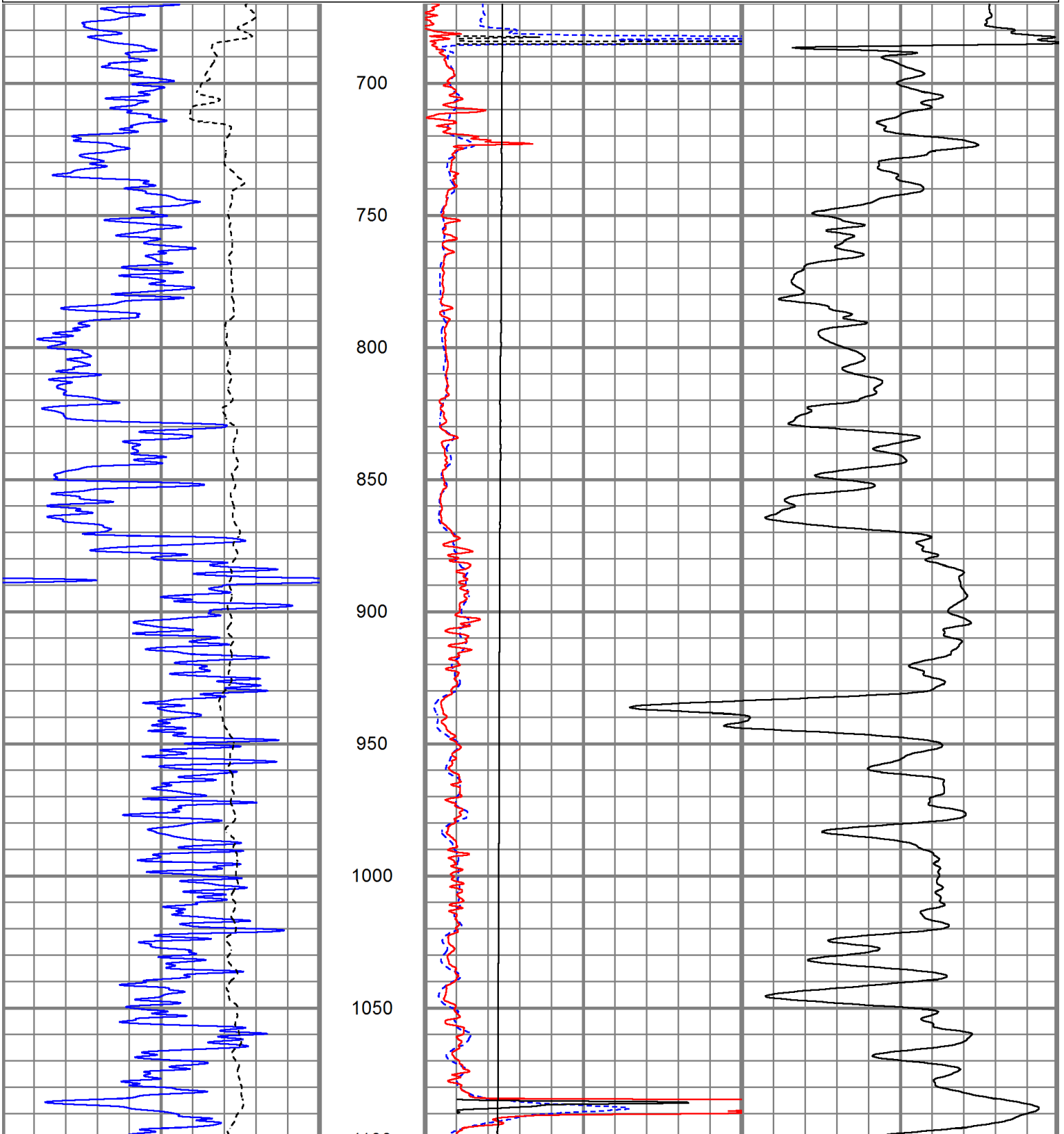
MAIN PASS

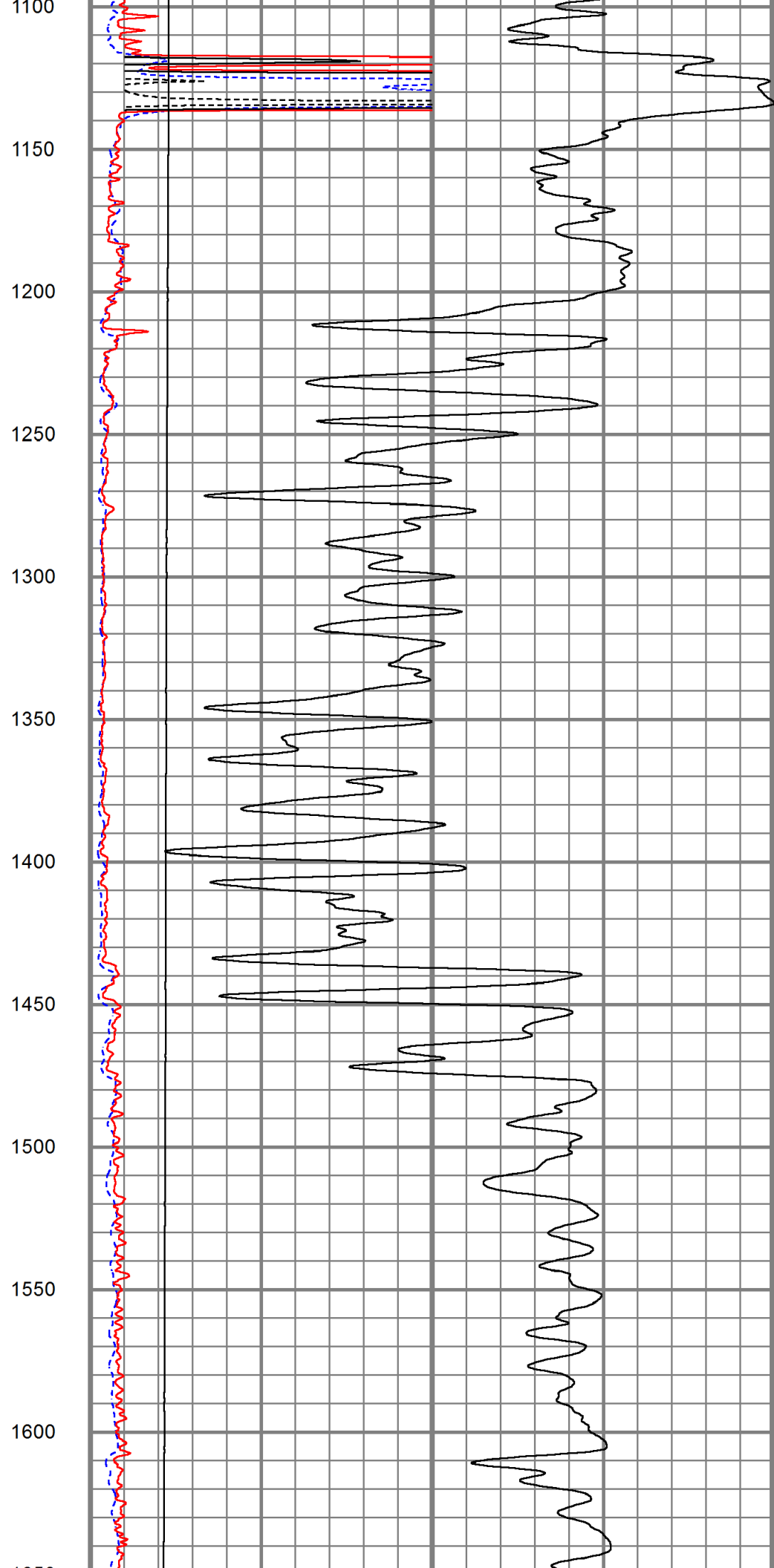
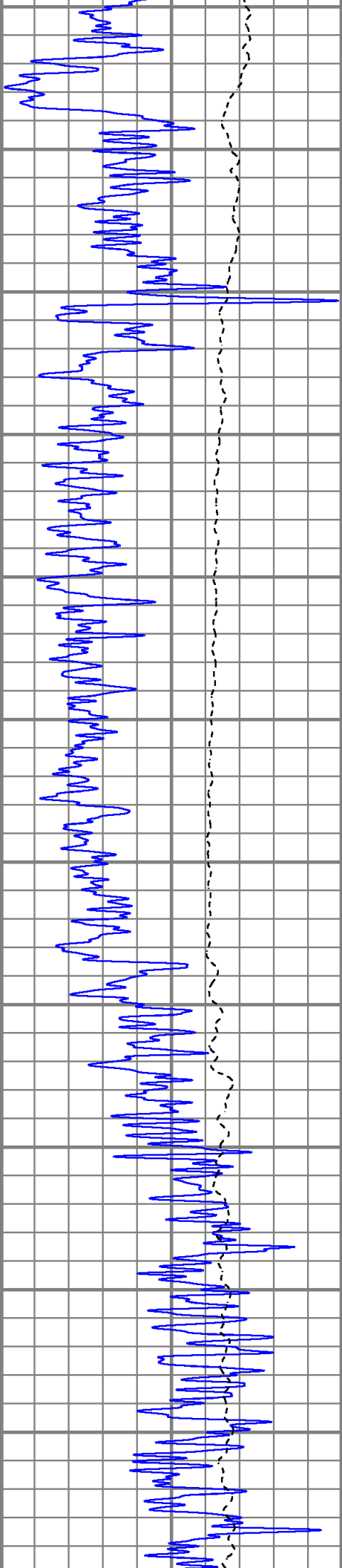
Database File ppblackgold#1oh.db
 Dataset Pathname pass2.1
 Presentation Format kdrillinn
 Dataset Creation Sat Sep 14 03:56:51 2019
 Charted by Depth in Feet scaled 1:600

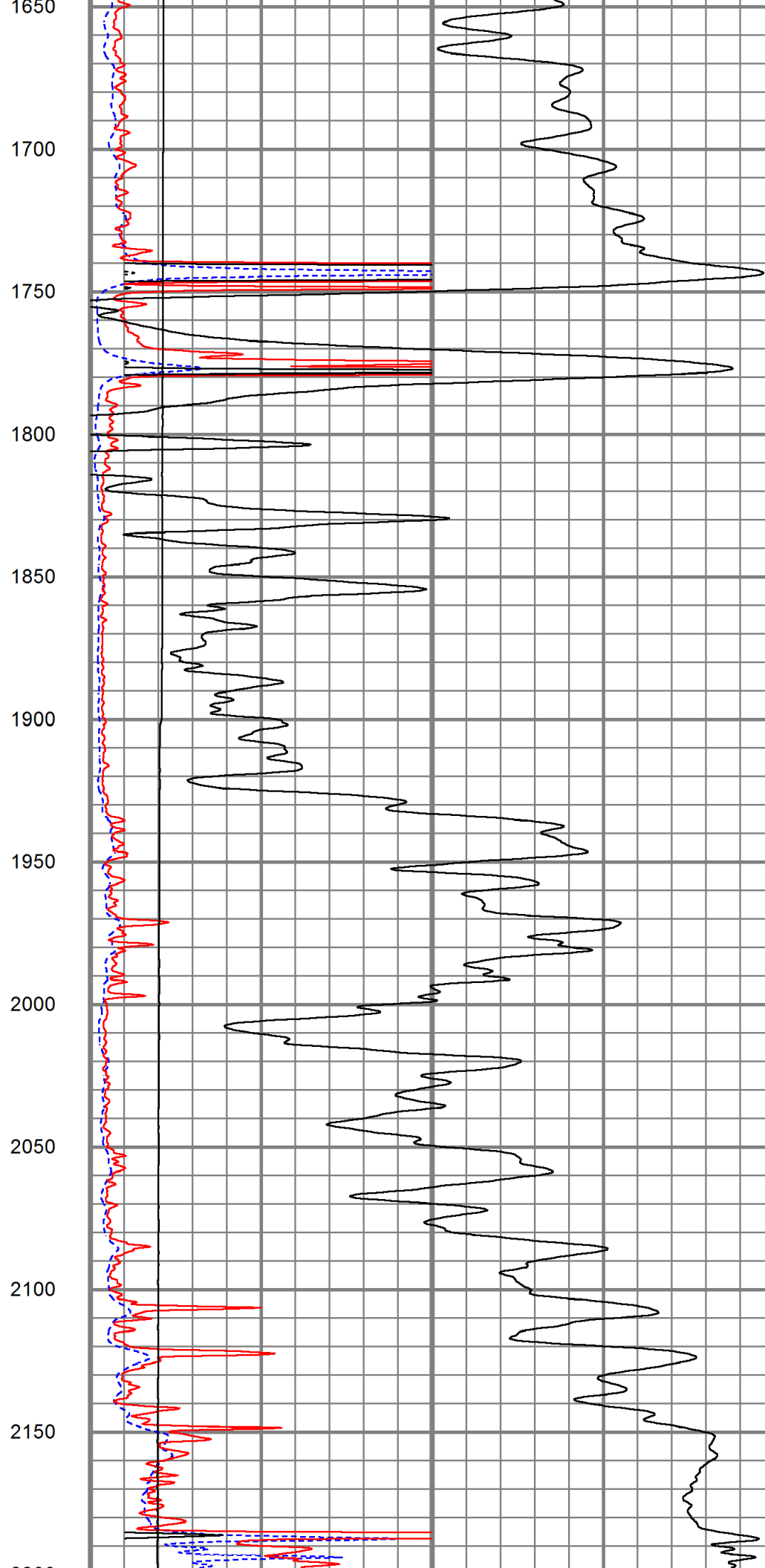
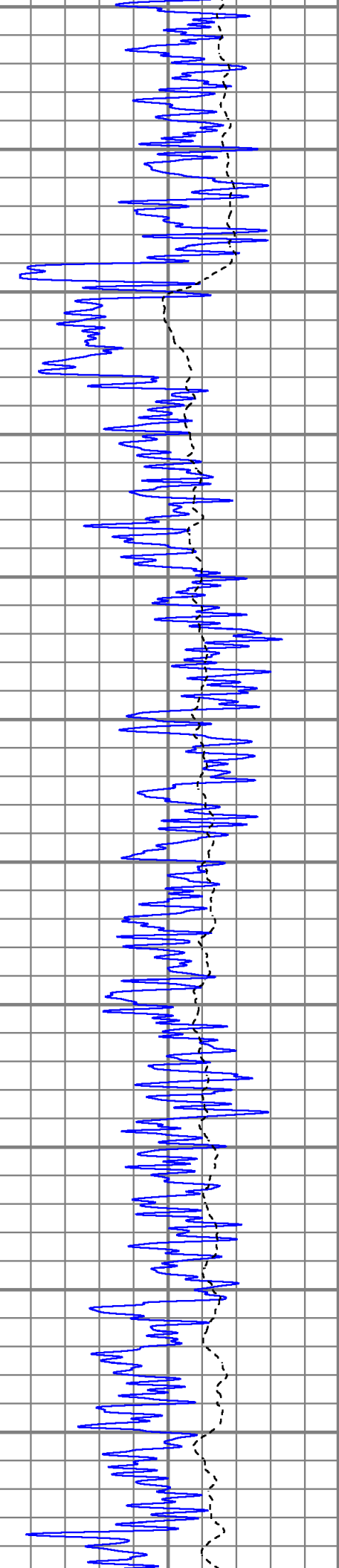
0	GR (GAPI)	150
-100	SP (mV)	100

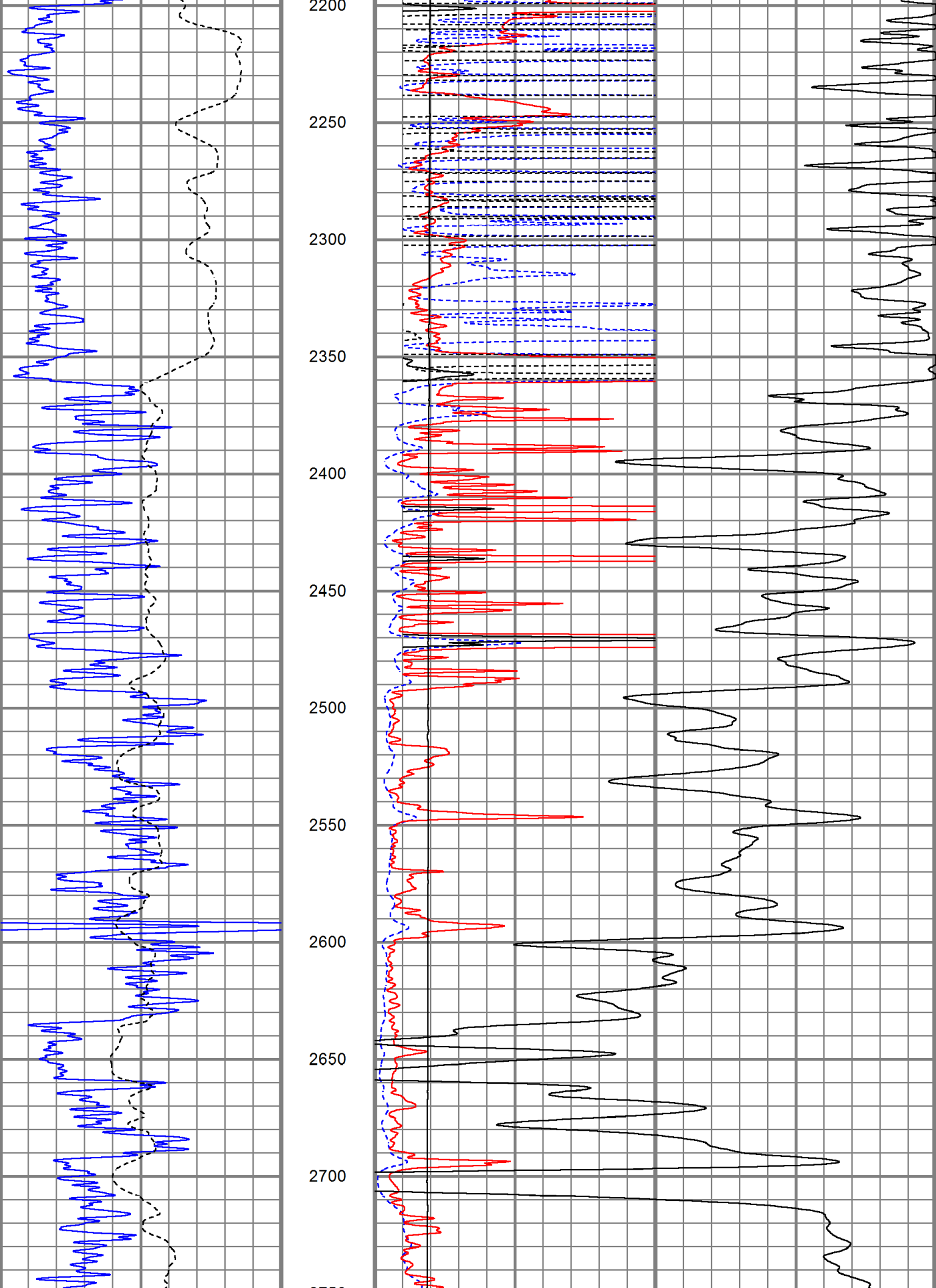
1000	CILD (mmho/m)	0
10000	LTEN (lb)	0

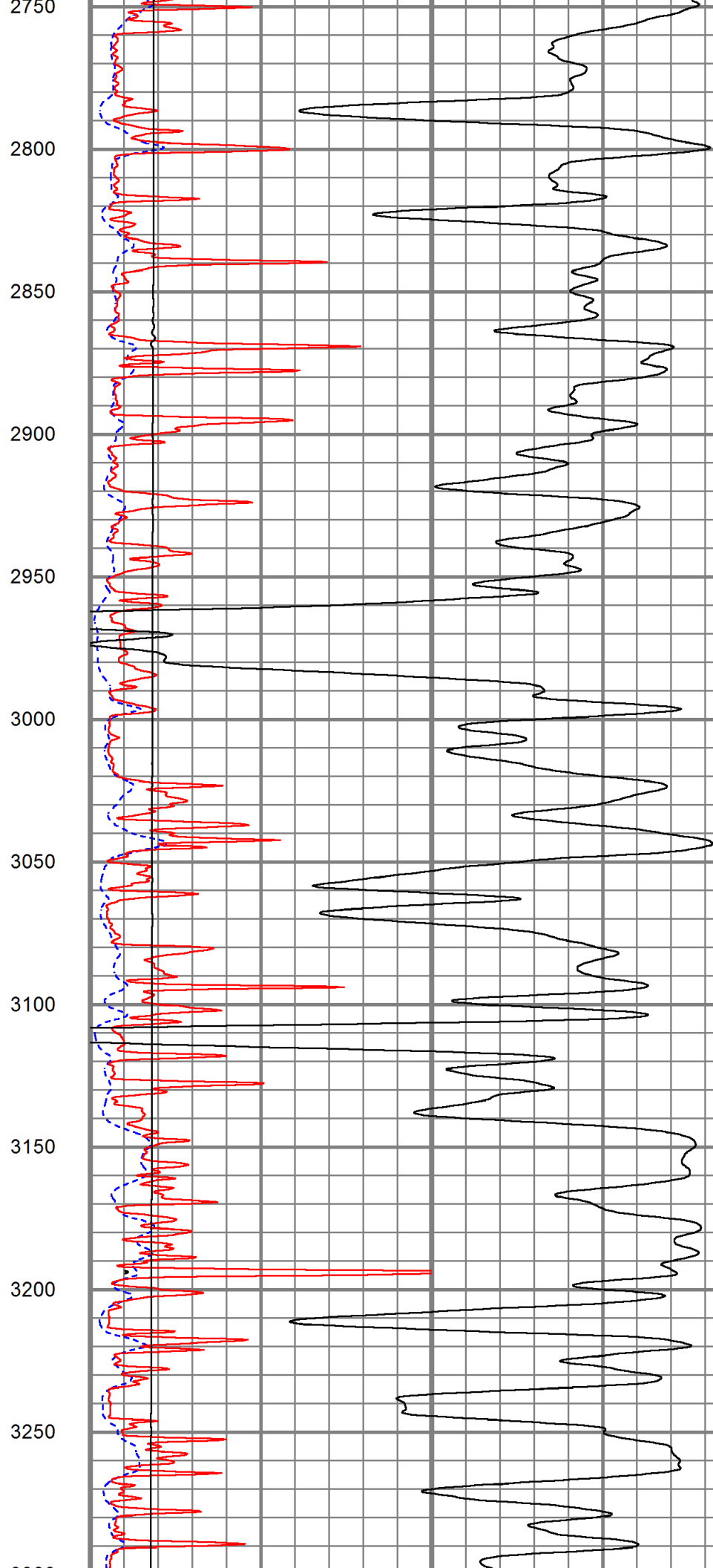
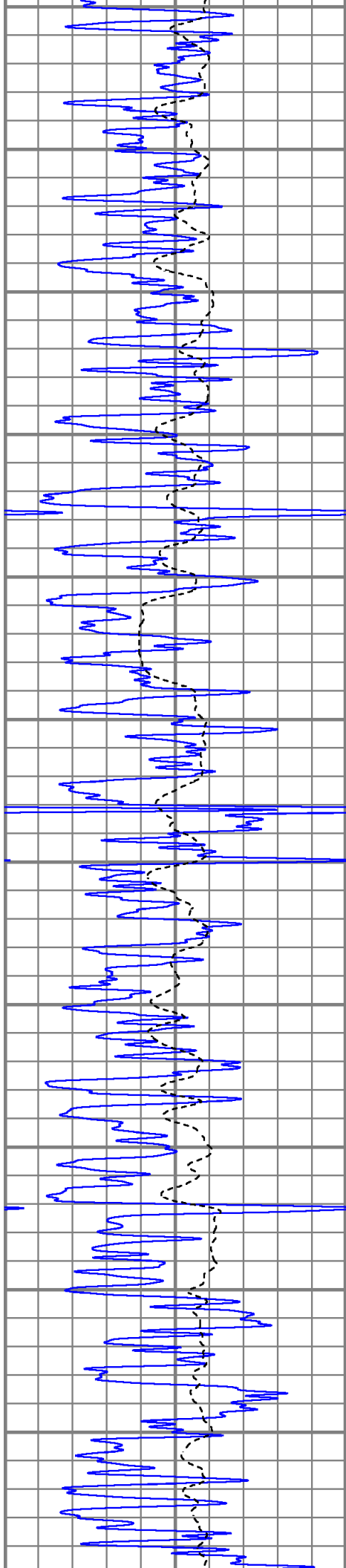
0	RILD (Ohm-m)	50
0	RLL3 (Ohm-m)	50
50	RILD x 10 (Ohm-m)	500
50	RLL3 x 10 (Ohm-m)	500

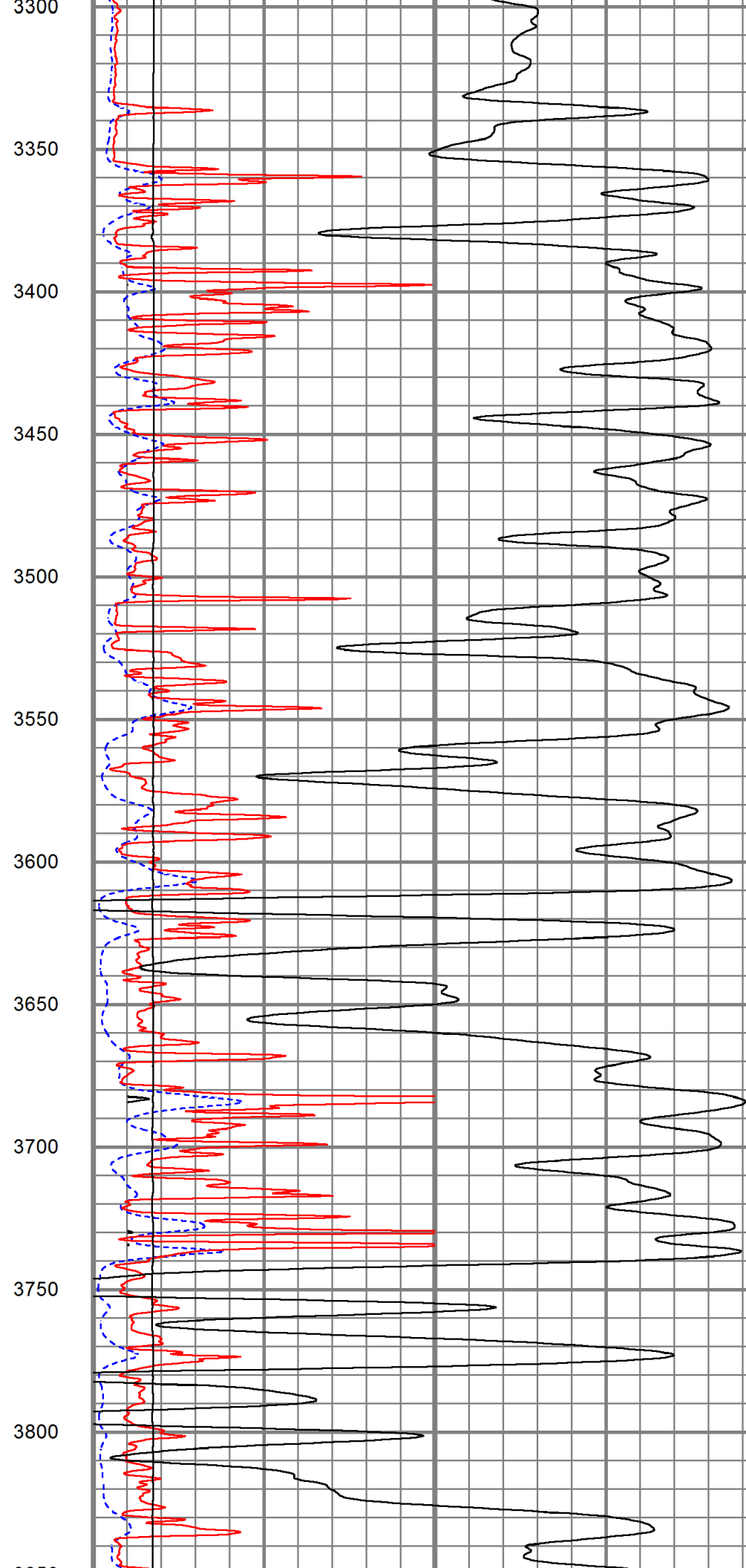
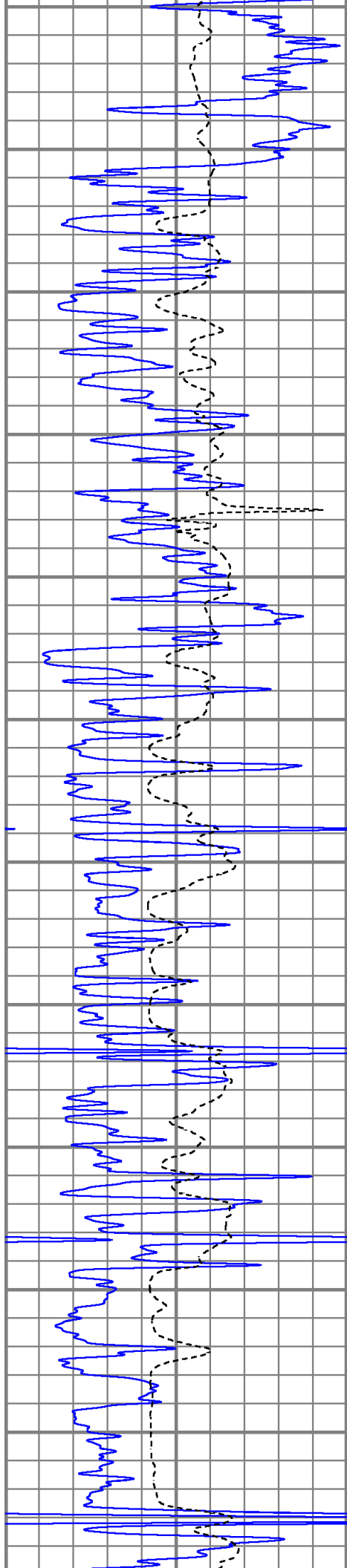


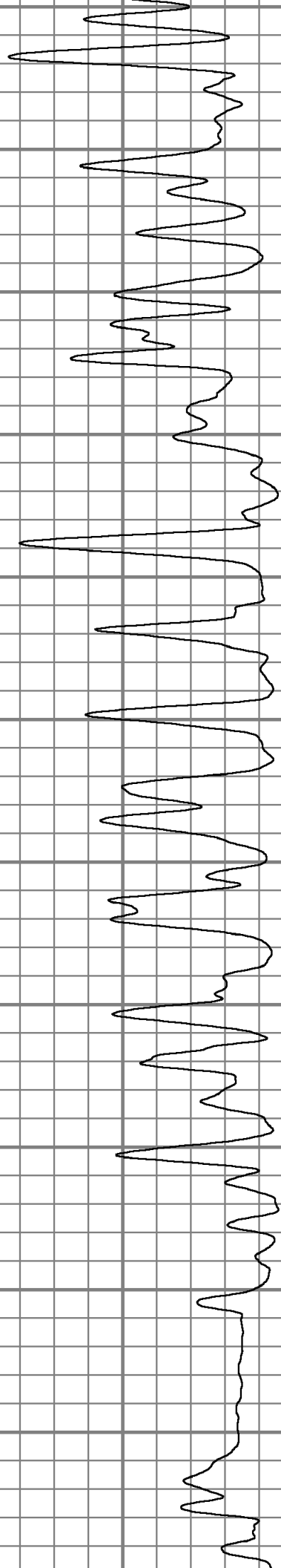
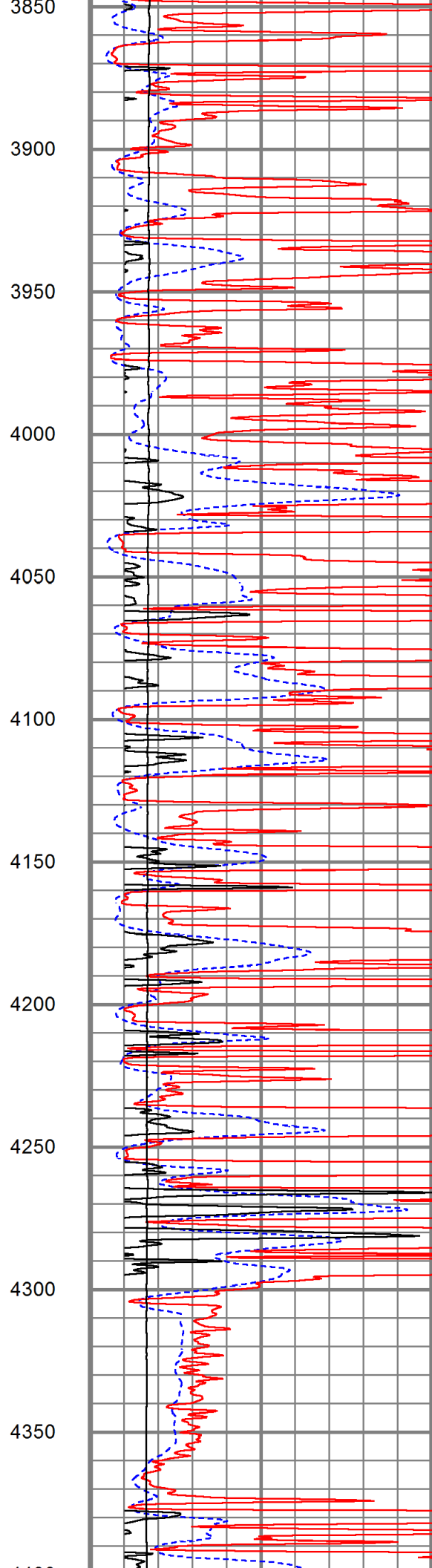
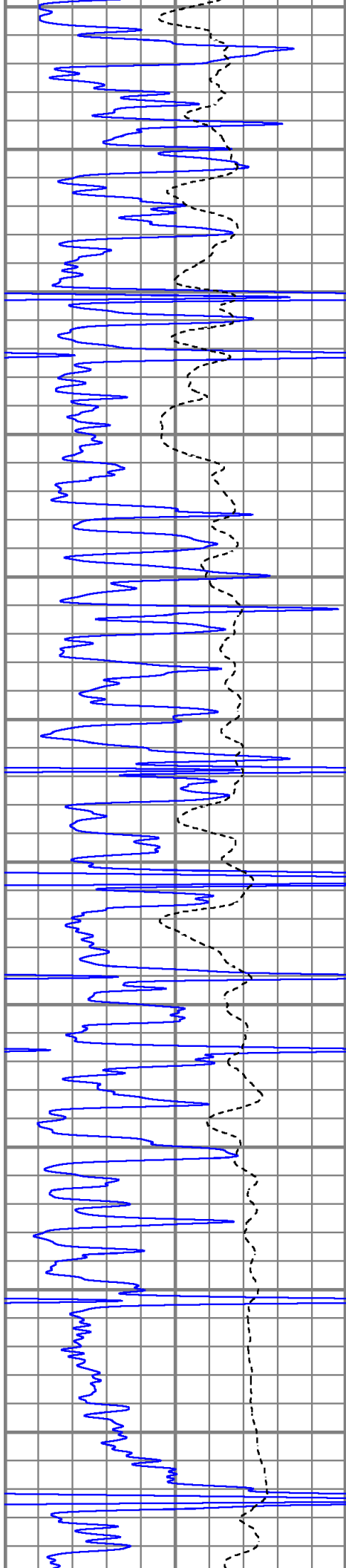


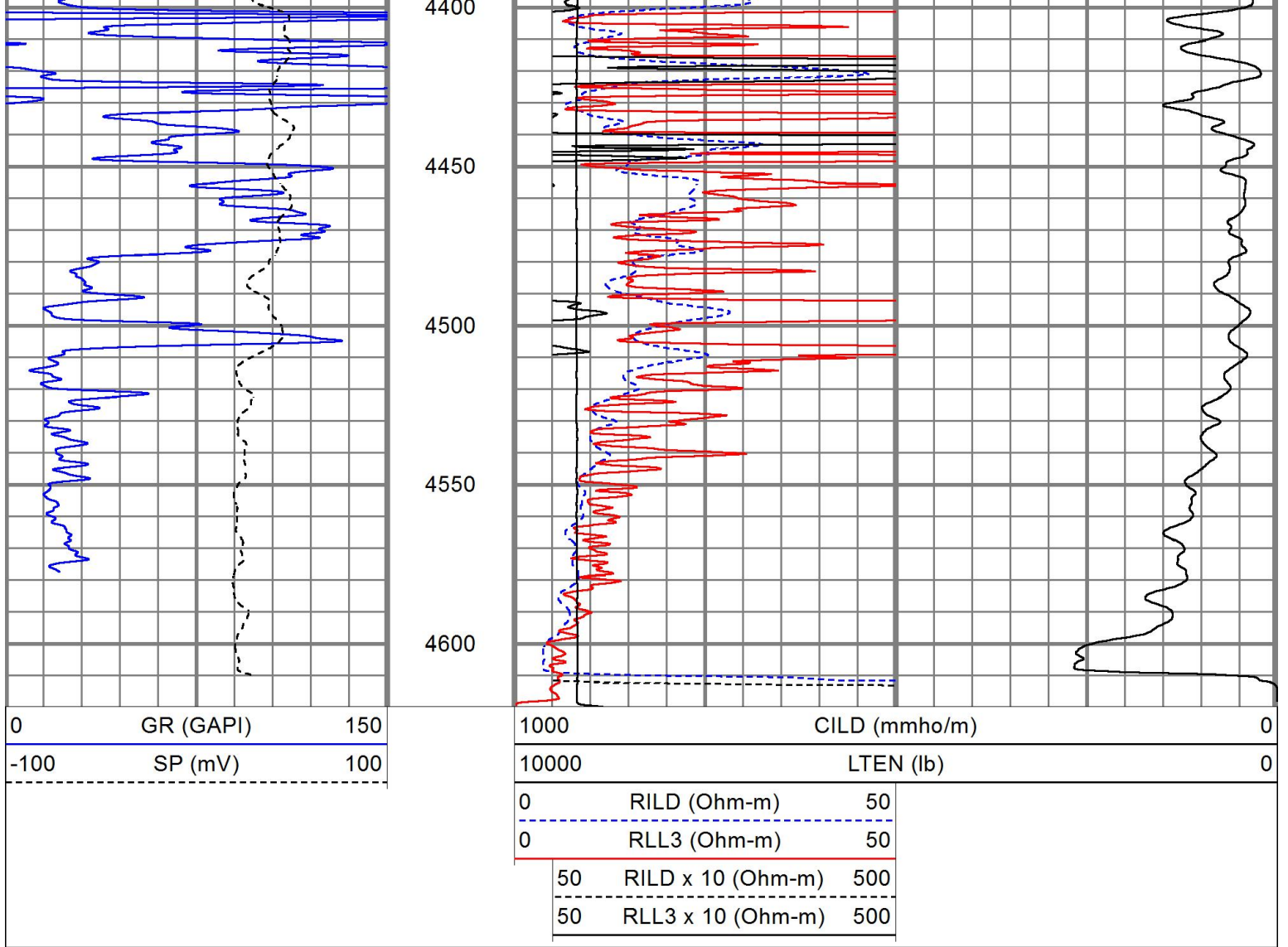








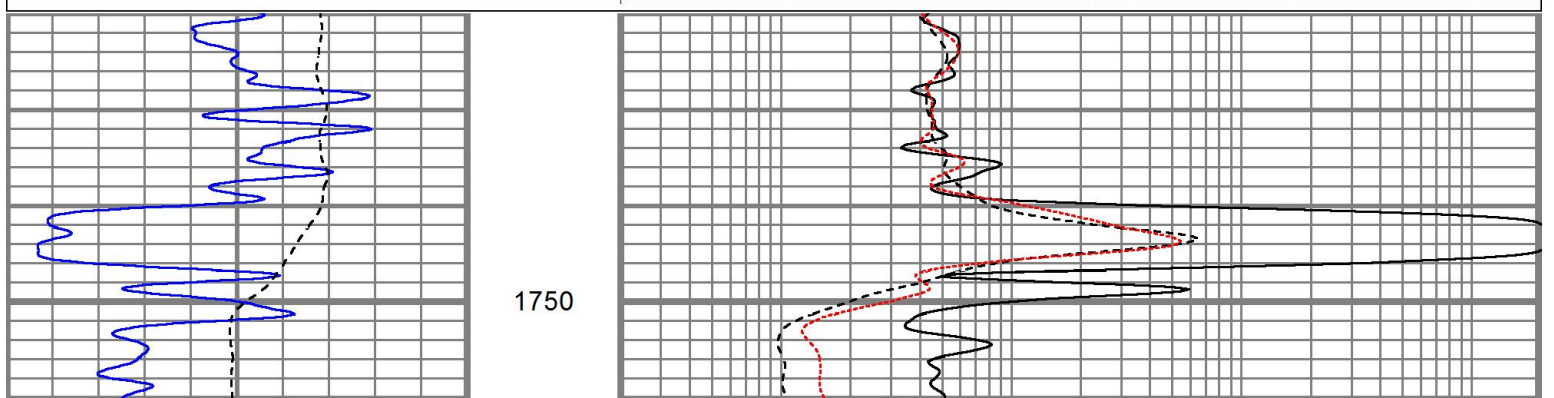


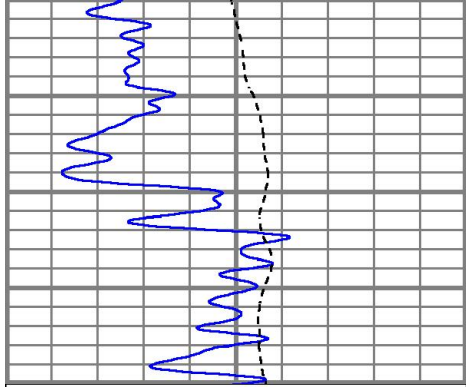


MAIN PASS

Database File ppblackgold#1oh.db
 Dataset Pathname pass2.1
 Presentation Format kdil
 Dataset Creation Sat Sep 14 03:56:51 2019
 Charted by Depth in Feet scaled 1:240

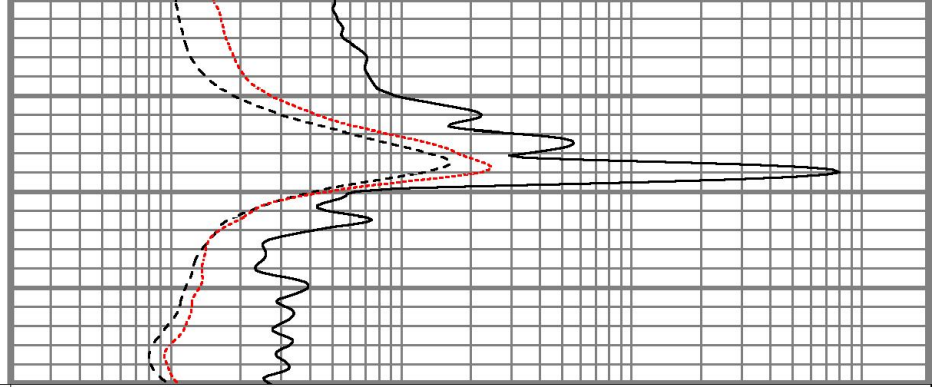
0	GR (GAPI)	150	0.2	RILD (Ohm-m)	2000
-100	SP (mV)	100	0.2	RLL3 (Ohm-m)	2000
			0.2	RILM (Ohm-m)	2000





0	GR (GAPI)	150
-100	SP (mV)	100

1800



0.2	RILD (Ohm-m)	2000
0.2	RLL3 (Ohm-m)	2000
0.2	RILM (Ohm-m)	2000

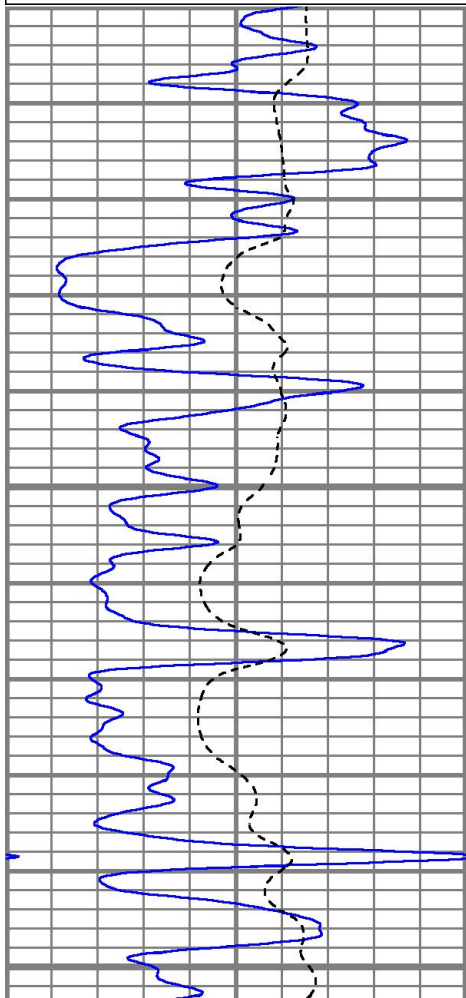


MAIN PASS

Database File ppblackgold#1oh.db
 Dataset Pathname pass2.1
 Presentation Format kdil
 Dataset Creation Sat Sep 14 03:56:51 2019
 Charted by Depth in Feet scaled 1:240

0	GR (GAPI)	150
-100	SP (mV)	100

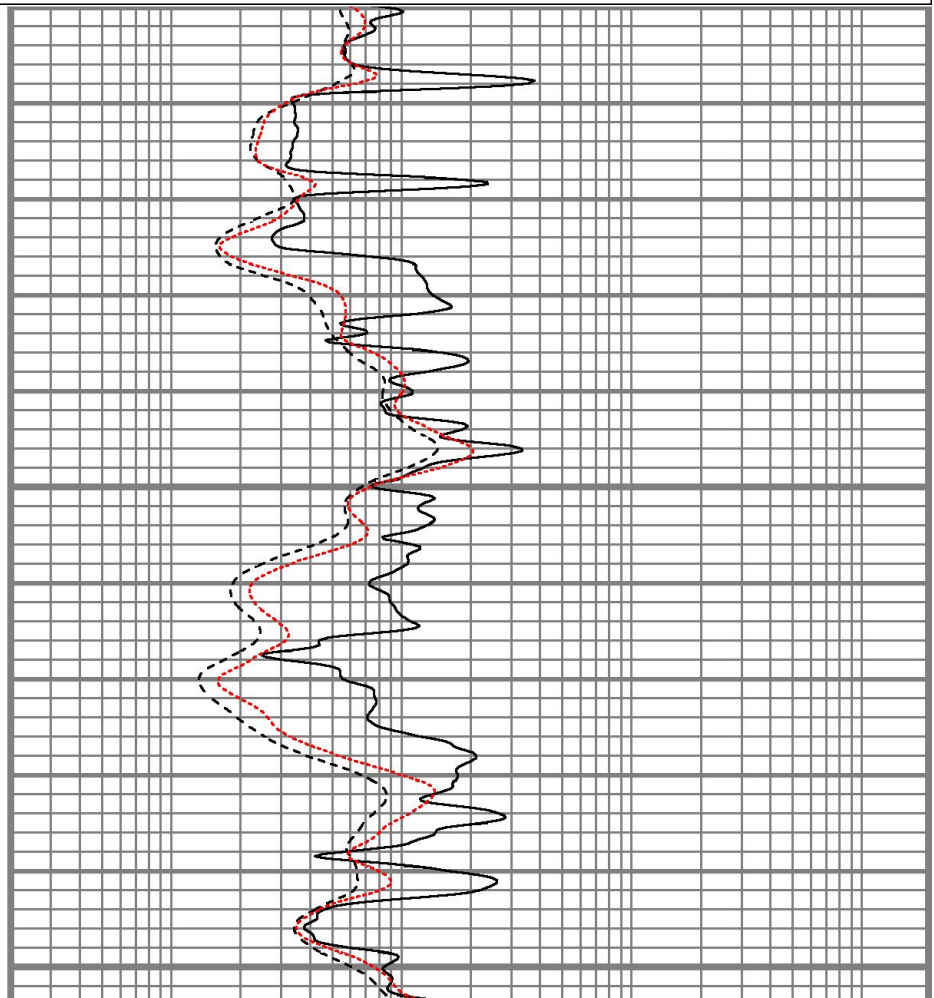
0.2	RILD (Ohm-m)	2000
0.2	RLL3 (Ohm-m)	2000
0.2	RILM (Ohm-m)	2000

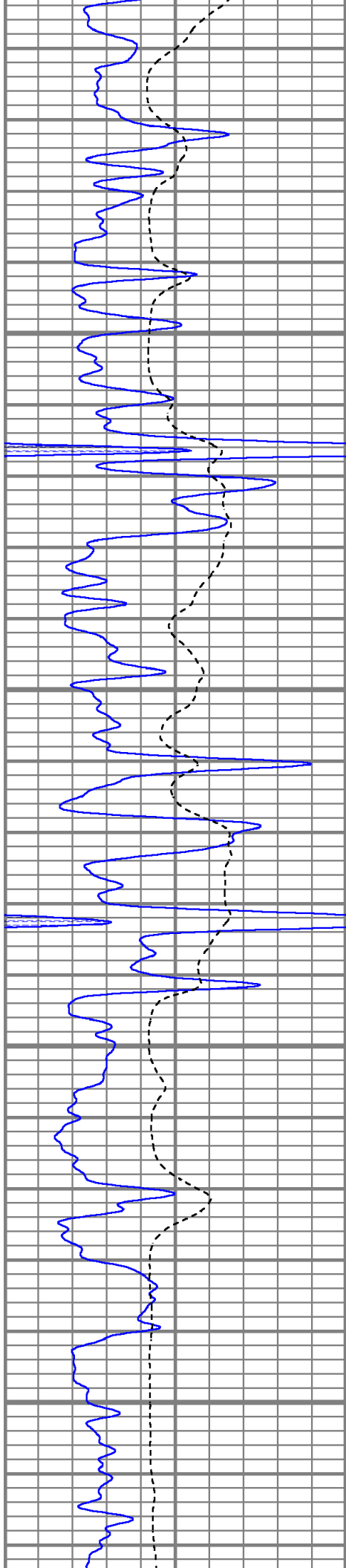


3500

3550

3600



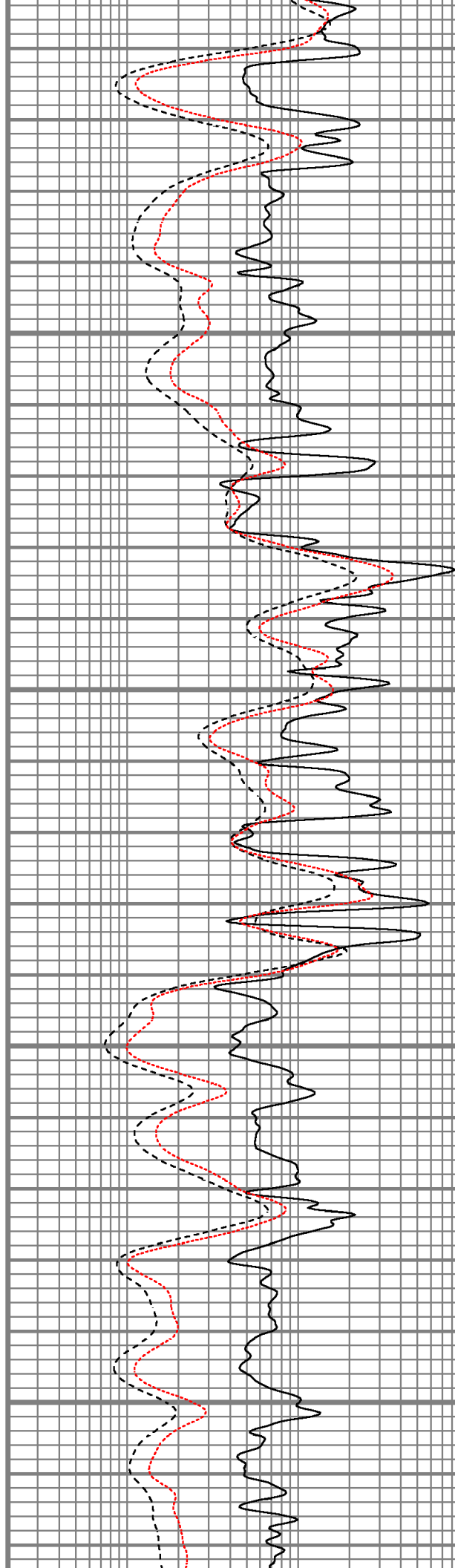


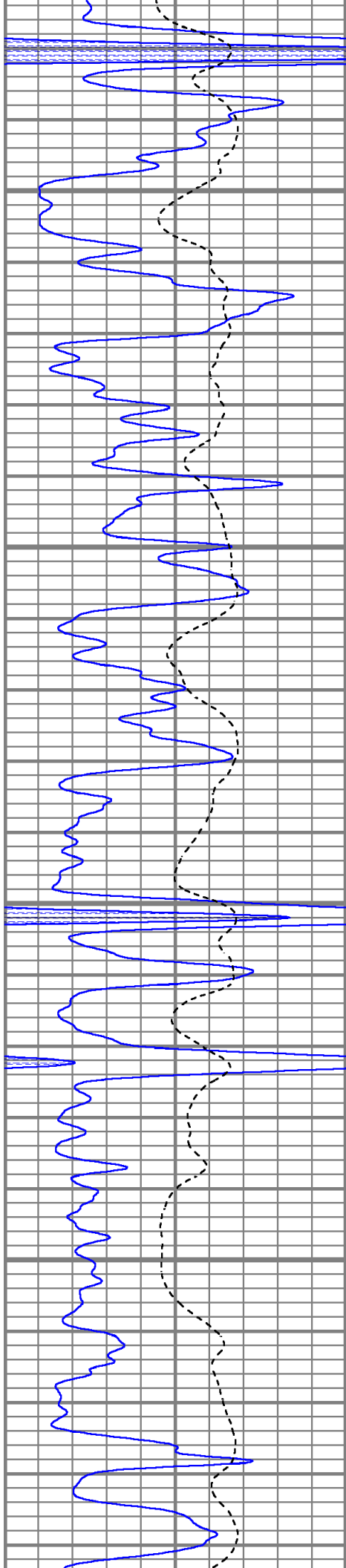
3650

3700

3750

3800



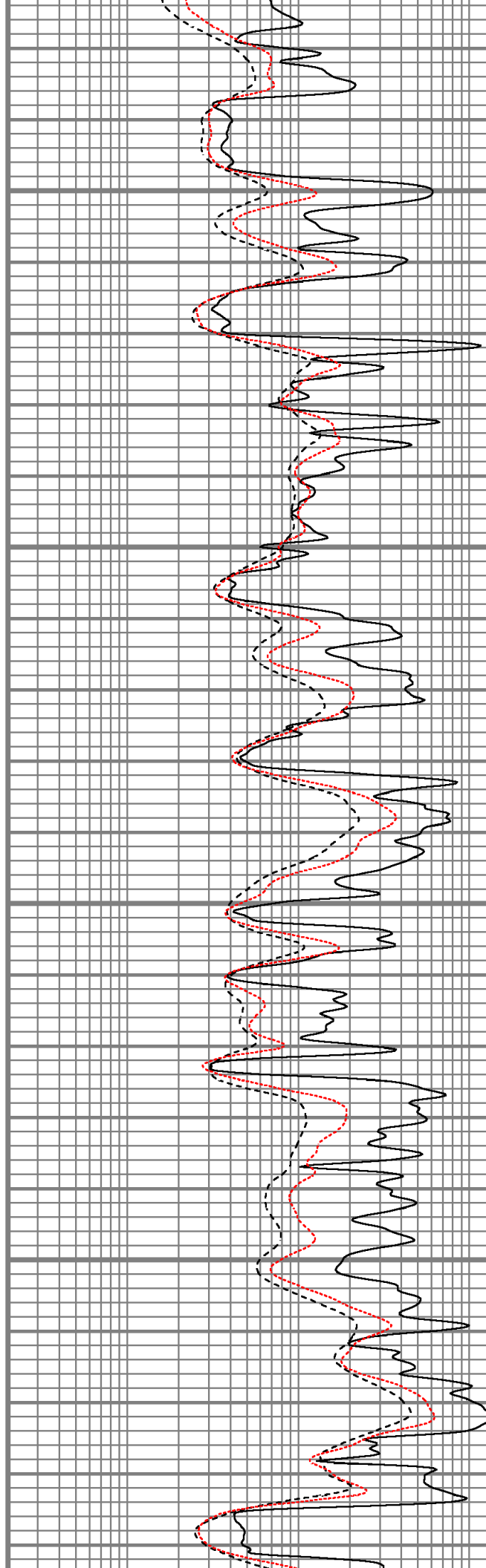


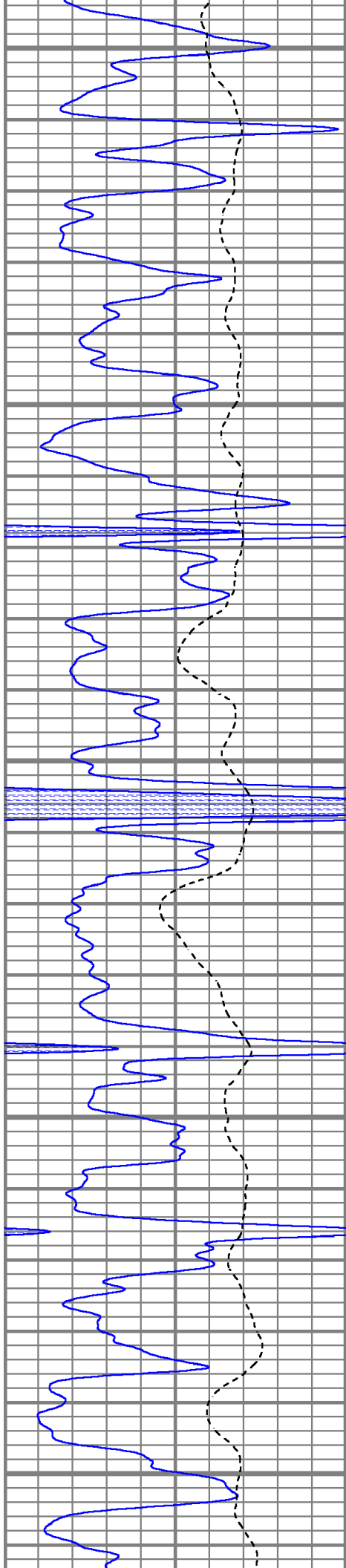
3850

3900

3950

4000





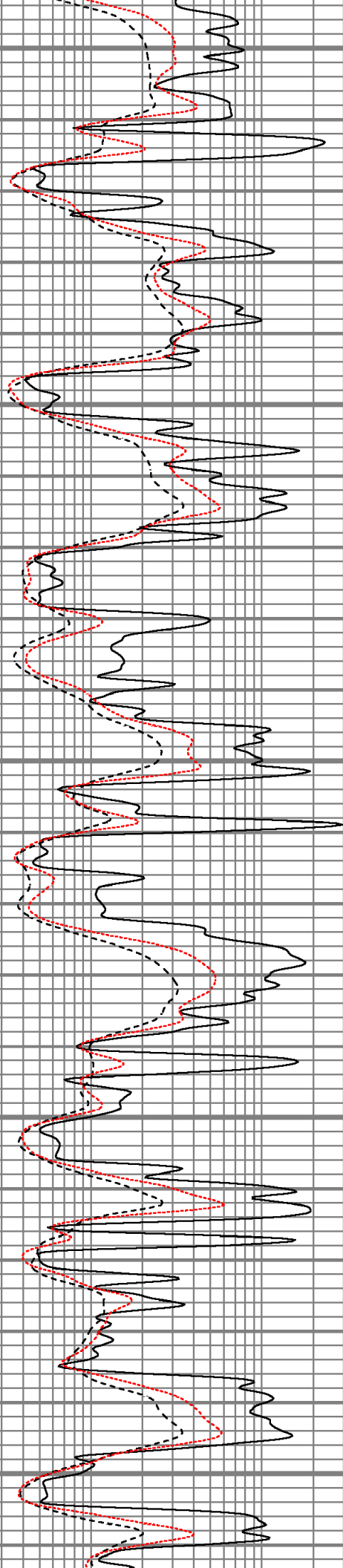
4050

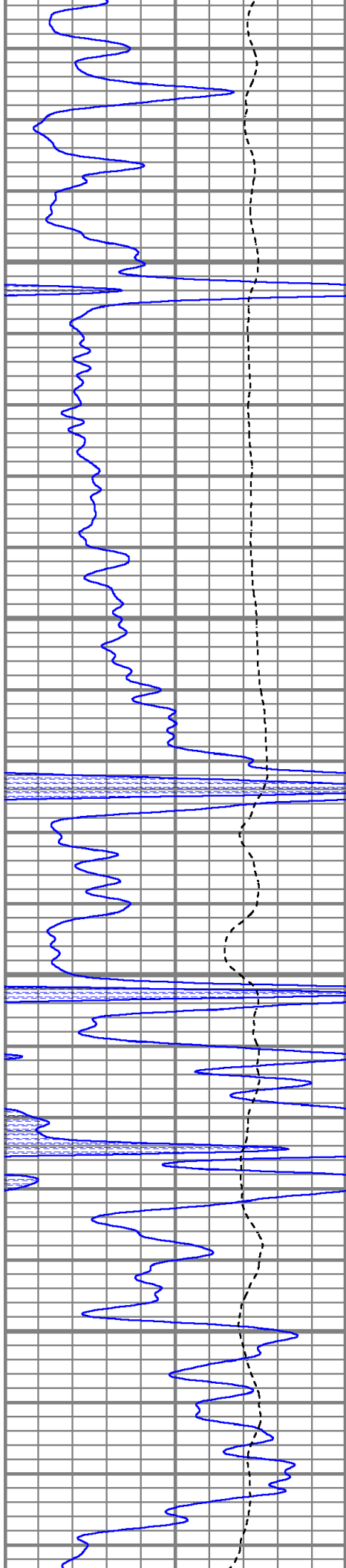
4100

4150

4200

4250



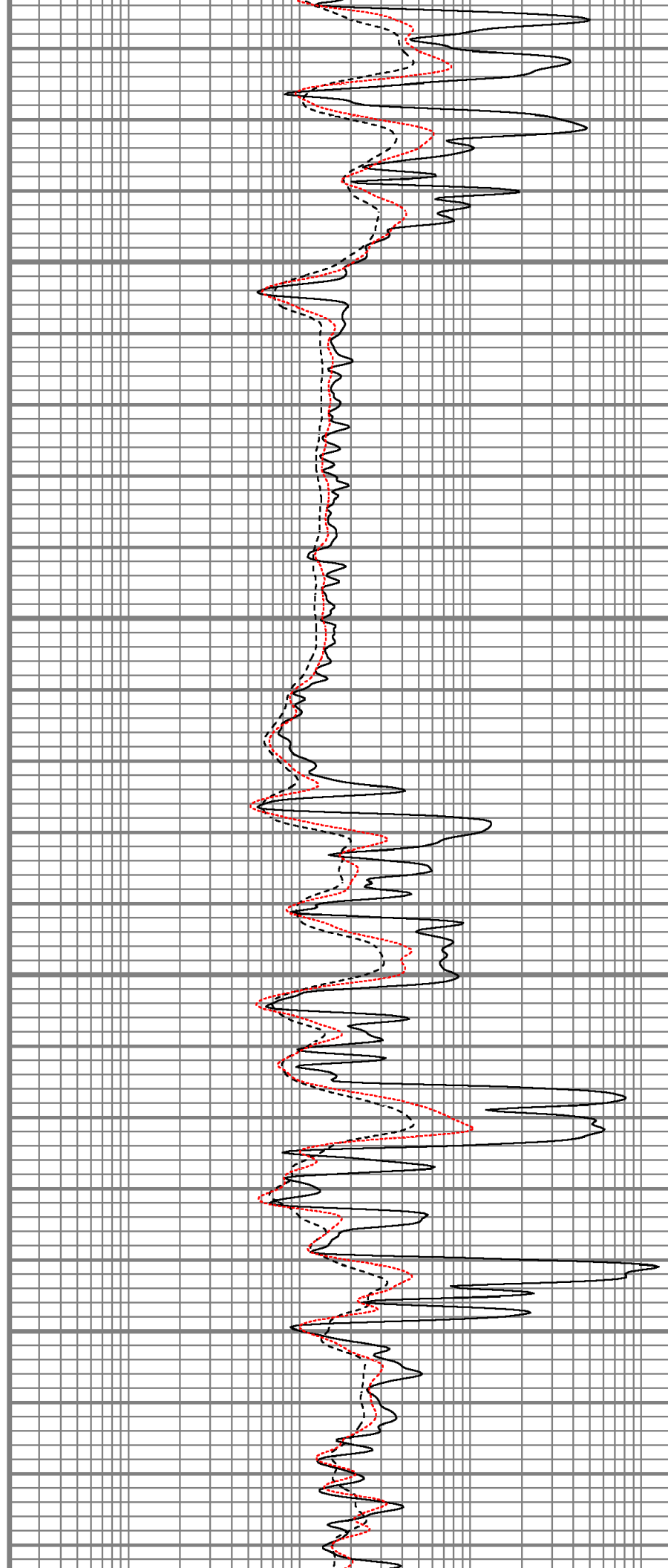


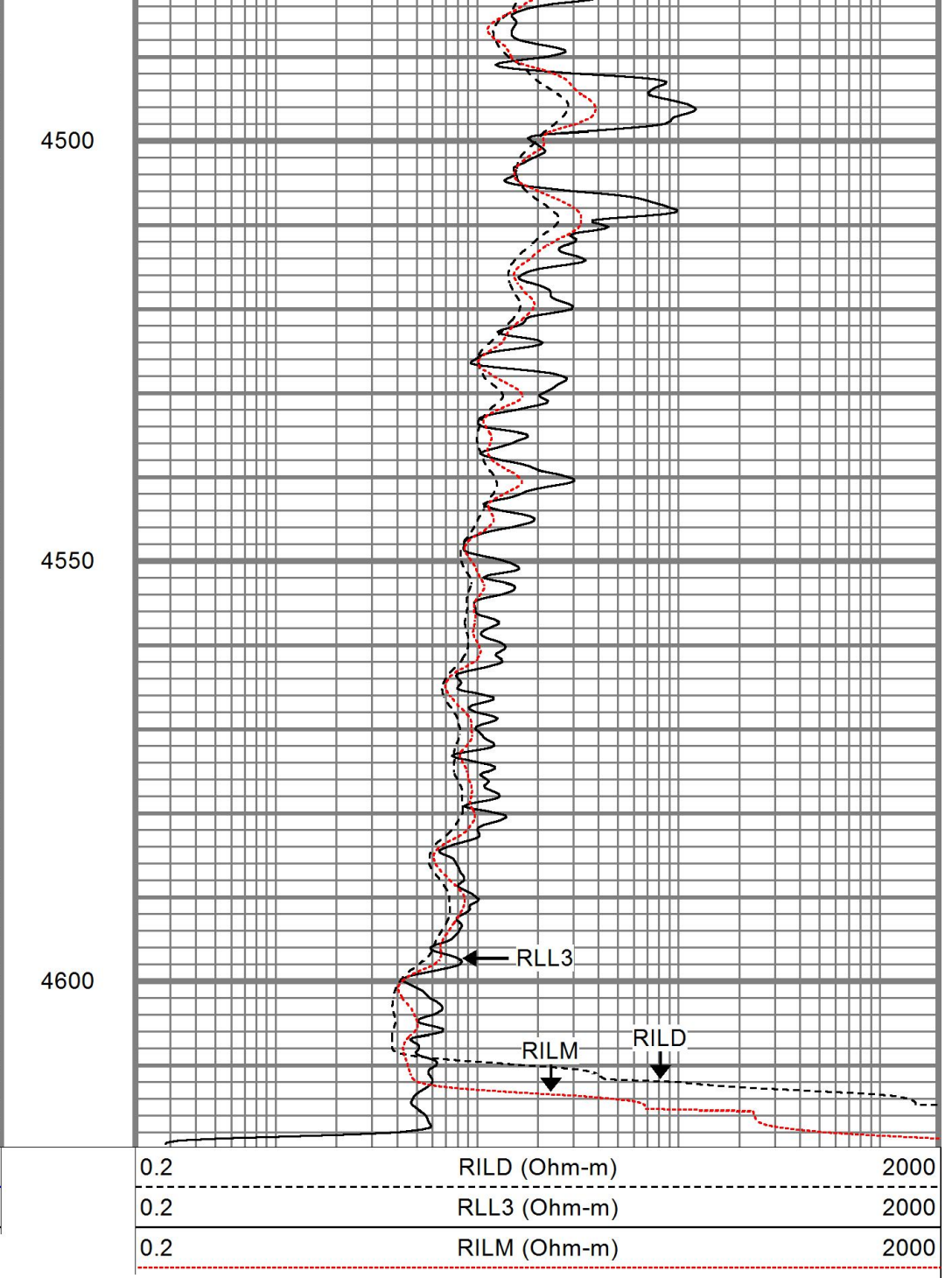
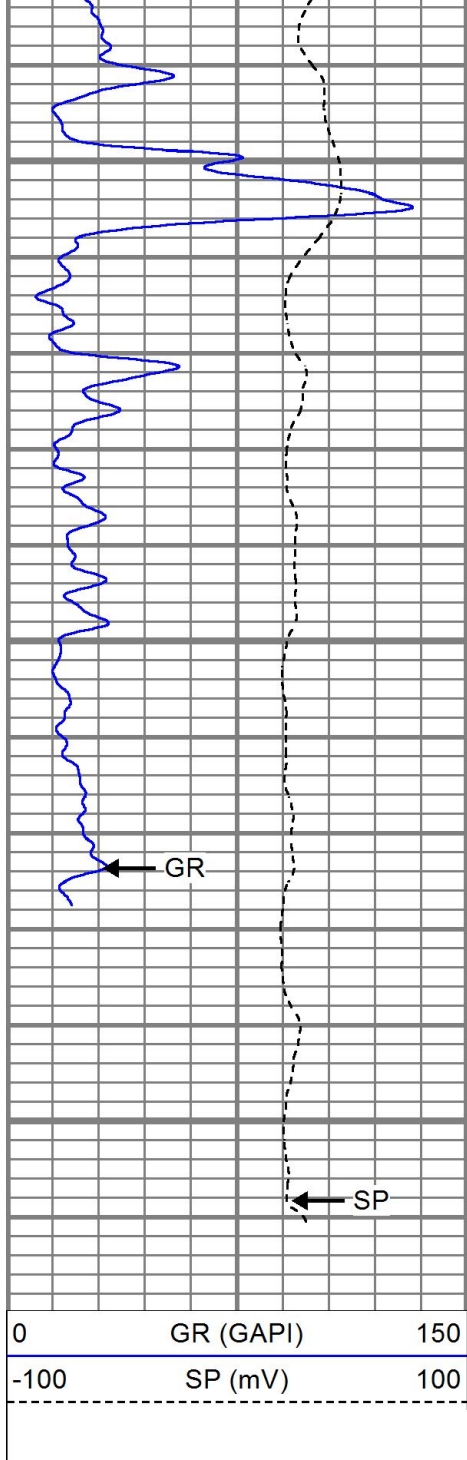
4300

4350

4400

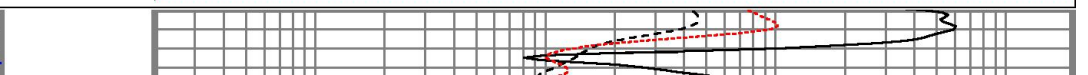
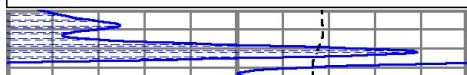
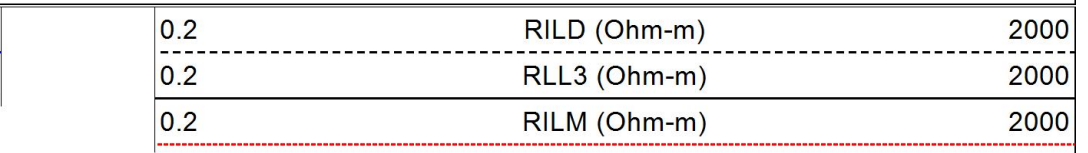
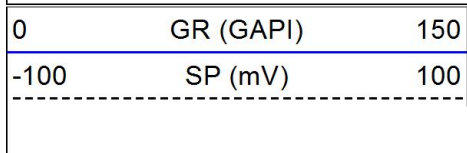
4450

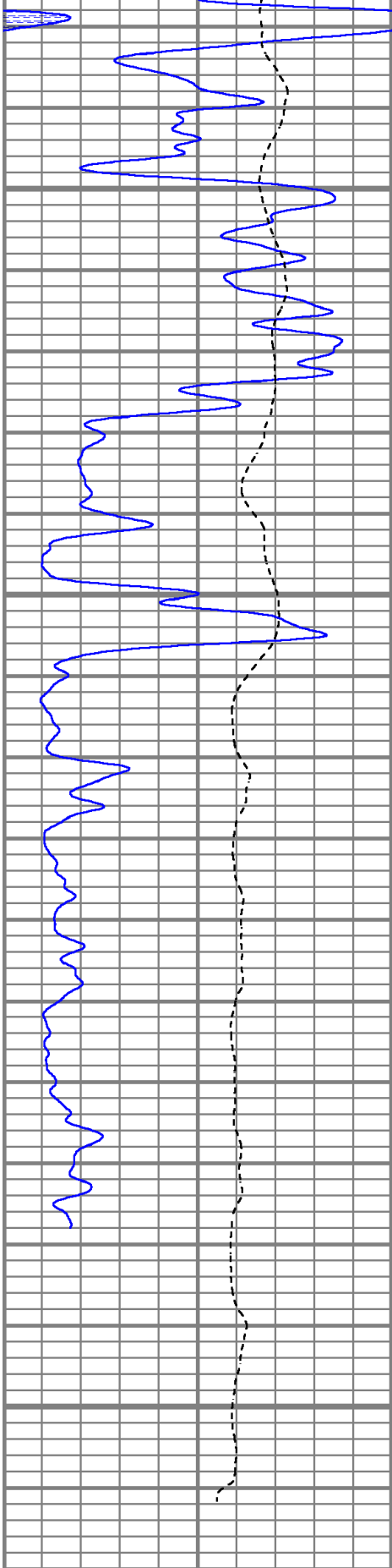




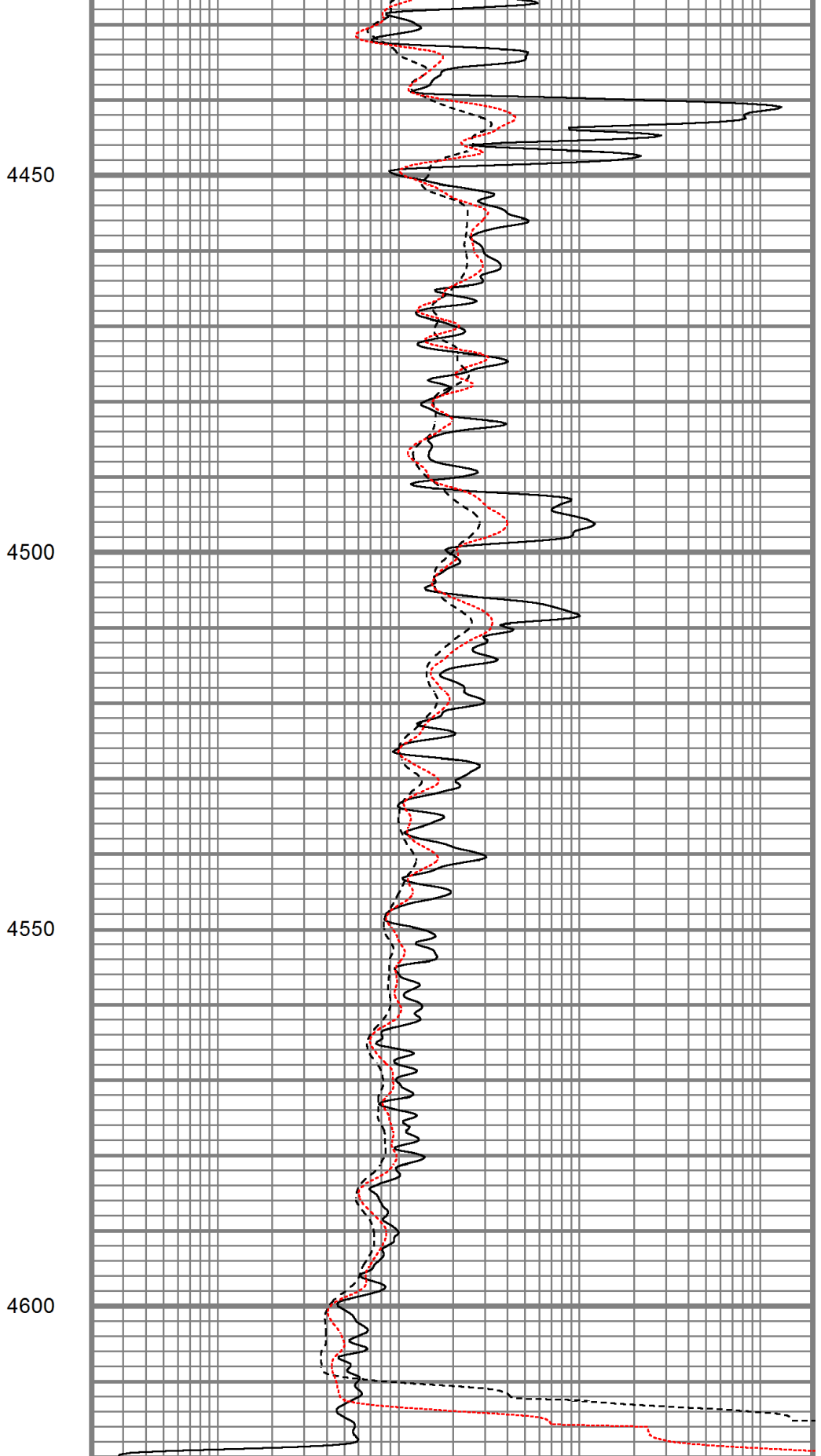
REPEAT SECTION

Database File ppblackgold#1oh.db
 Dataset Pathname pass1.1
 Presentation Format kdil
 Dataset Creation Sat Sep 14 04:00:24 2019
 Charted by Depth in Feet scaled 1:240





0	GR (GAPI)	150
-100	SP (mV)	100



0.2	RILD (Ohm-m)	2000
0.2	RLL3 (Ohm-m)	2000
0.2	RILM (Ohm-m)	2000

Database File ppblackgold#1oh.db
 Dataset Pathname pass2.1
 Dataset Creation Sat Sep 14 03:56:51 2019

Dual Induction Calibration Report

Serial-Model: 5375-G
 Surface Cal Performed: Fri Apr 19 12:45:28 2019
 Downhole Cal Performed: Fri Apr 19 12:45:28 2019
 After Survey Verification Performed: Fri Apr 19 12:45:28 2019

Surface Calibration

Loop:	Readings			References			Results	
	Air	Loop		Air	Loop		m	b
Deep	0.002	0.642	V	0.000	350.000	mmho/m	546.631	-1.028
Medium	0.006	0.727	V	0.000	400.000	mmho/m	555.208	-3.897
Internal:	Zero	Cal		Zero	Cal		m	b
Deep	0.002	0.642	V	0.000	350.000	mmho/m	546.502	-0.822
Medium	0.006	0.727	V	0.000	550.000	mmho/m	763.570	-4.829

Downhole Calibration

Internal:	Readings			References			Results	
	Zero	Cal		Zero	Cal		m	b
Deep	0.000	0.000	mmho/m	-0.206	349.877	mmho/m	1.000	0.000
Medium	0.000	0.000	mmho/m	0.014	399.930	mmho/m	1.000	0.000
Shallow	2.429	0.011	V	500.000	2.000	Ohm-m	200.929	0.282

After Survey Verification

Internal:	Readings			Targets			Results	
	Zero	Cal		Zero	Cal		m'	b'
Deep	0.000	0.000	mmho/m	0.000	0.000	mmho/m	1.000	0.000
Medium	0.000	0.000	mmho/m	0.000	0.000	mmho/m	1.000	0.000
Shallow	0.000	0.000	Ohm-m	500.000	2.000	Ohm-m	1.000	0.000

Neutron Calibration Report

Serial Number: AD5139
 Tool Model: ADMY5139
 Performed: (Not Performed)

Calibrator Value: 1 NAPI

Calibrator Reading: 1 cps

Sensitivity: 1 NAPI/cps

Temperature Calibration Report

Serial Number: WithMC
 Tool Model: WMC
 Performed: Fri Apr 19 12:15:04 2019

	Reference	Reading
Low Reference:	0.00 degF	0.00 degF
High Reference:	1.00 degF	1.00 degF
Gain:	1.00	

Cam: 1.00
 Offset: 0.00
 Delta Spacing: 1

Inclinometer Calibration Report

Performed:	Fri Apr 19 12:14:53 2019				
	Low Read.	High Read.	Low Ref.	High Ref.	
X Accelerometer	205.00	1843.00	-1.00	1.00	gee
Y Accelerometer	205.00	1843.00	-1.00	1.00	gee
Z Accelerometer					gee

Gamma Ray Calibration Report

Serial Number:	WithMC	
Tool Model:	WMC	
Performed:	Fri Apr 19 12:14:18 2019	
Calibrator Value:	1.0	GAPI
Background Reading:	0.0	cps
Calibrator Reading:	1.0	cps
Sensitivity:	1.0000	GAPI/cps

Sensor	Offset (ft)	Schematic	Description	Length (ft)	O.D. (in)	Weight (lb)	
GR	40.07		CHD-STD	0.50	1.69	1.00	
ACCY	38.91		ADT-WMC (WithMC) Admyr Telemetry With Mudcell	4.58	3.50	120.00	
ACCX	38.91						
SSTAT	38.49						
PSTAT	37.66						
ASTAT	37.66						
GRD	36.82		NEU-ADMY5139 (AD5139) Admyer NEU DIGITAL	5.65	3.50	50.00	
TEMP	36.82						
NEU	32.76						
LStat	24.30						
LS8	23.64						
LS7	23.64						
LS6	23.64		ADT1LITH-A (1) Admyr Litho Density Tool	9.29	3.50	240.00	
LS5	23.64						
LS4	23.64						
LS3	23.64						
LS2	23.64						
LS1	23.64						
LSV	23.64						
LSD	23.62						
SSV	23.43						
SS8	23.43						
SS7	23.43						
SS6	23.43						
SS5	23.43						
SS4	23.43		DIL-G (5375) Gearhart	21.47	4.00	345.00	
SS3	23.43						
SS2	23.43						

SS1	23.43	
DCAL	23.37	
SSD	23.04	
SP	10.60	
CILD	10.60	
CILM	6.89	
RLL3	1.70	
TR_Mon	0.00	

Dataset: ppblackgold#1oh.db: field/well/run1/pass2.1
 Total length: 41.49 ft
 Total weight: 756.00 lb
 O.D.: 4.00 in