



SONIC LOG

Company IA OPERATING, INC.
Well CARRIE #2-5
Field BLUE HILL NORTHWEST
County ELLIS
State KANSAS

Company IA OPERATING, INC.
Well CARRIE #2-5
Field BLUE HILL NORTHWEST
County ELLIS State KANSAS

Location: API #: 15-051-26958-0000
2180' FSL & 1460' FWL
SEC 2 TWP 12S RGE 16W
Permanent Datum GROUND LEVEL Elevation 1815
Log Measured From KELLY BUSHING & A.G.L.
Drilling Measured From KELLY BUSHING
Elevation
K.B. 1823
D.F. 1821
G.L. 1815

Table with 2 columns: Log Parameter (e.g., Date, Run Number, Depth Driller) and Value (e.g., 08/01/19, TWC, 3450).

<<< Fold Here >>>

All interpretations are opinions based on inferences from electrical or other measurements and we cannot and do not guarantee the accuracy or correctness of any interpretation...

Comments

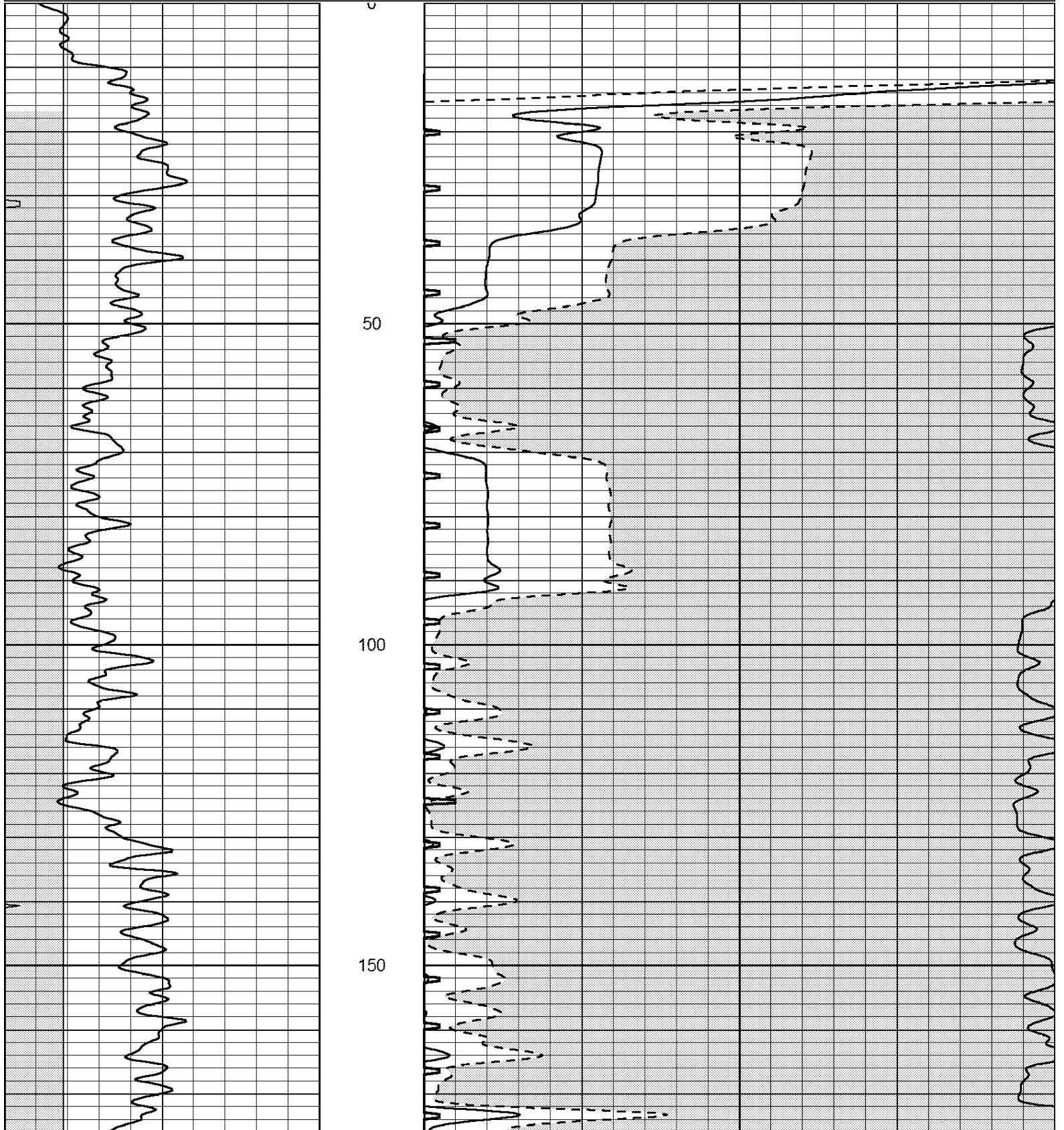
THANK YOU FOR USING ELI WIRELINE, HAYS, KS. (785) 628-6395
DIRECTIONS
BLUE HILL SCHOOL HOUSE NORTH TO HOMESTEAD RD.
EAST 1 1/4 MILE, SOUTH INTO.

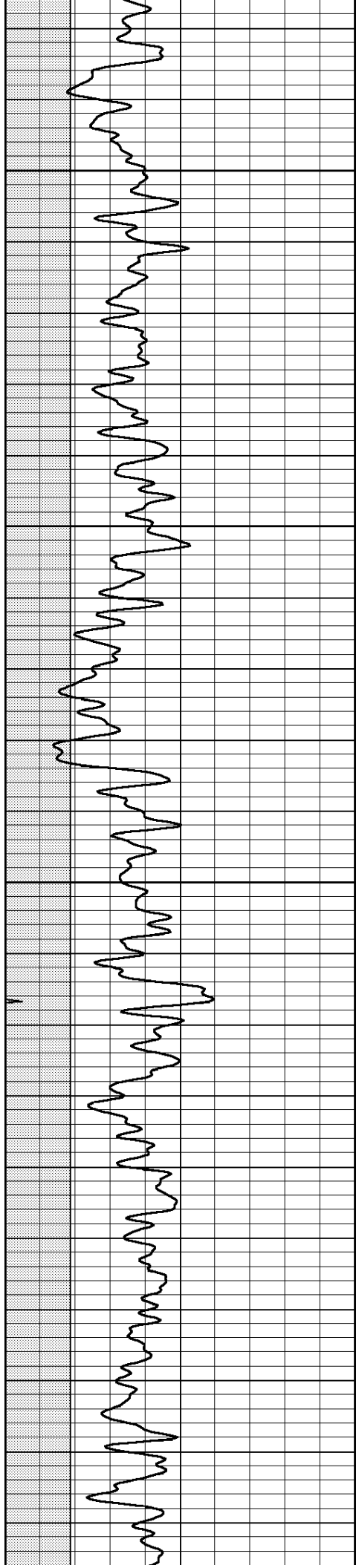


MAIN PASS

Database File: 4079pe.db
 Dataset Pathname: pass5SON
 Presentation Format: _slt
 Dataset Creation: Thu Aug 01 05:12:30 2019
 Charted by: Depth in Feet scaled 1:240

0	GAMMA RAY (GAPI)	150	ABHV	140	DELTA TIME (usec/ft)	40
6	CALIPER (in)	16	10 (ft3) 0	30	SONIC POROSITY (pu)	-10
0	MINMK	20	TBHV	0	ITT (msec)	20
			0 (ft3) 10			



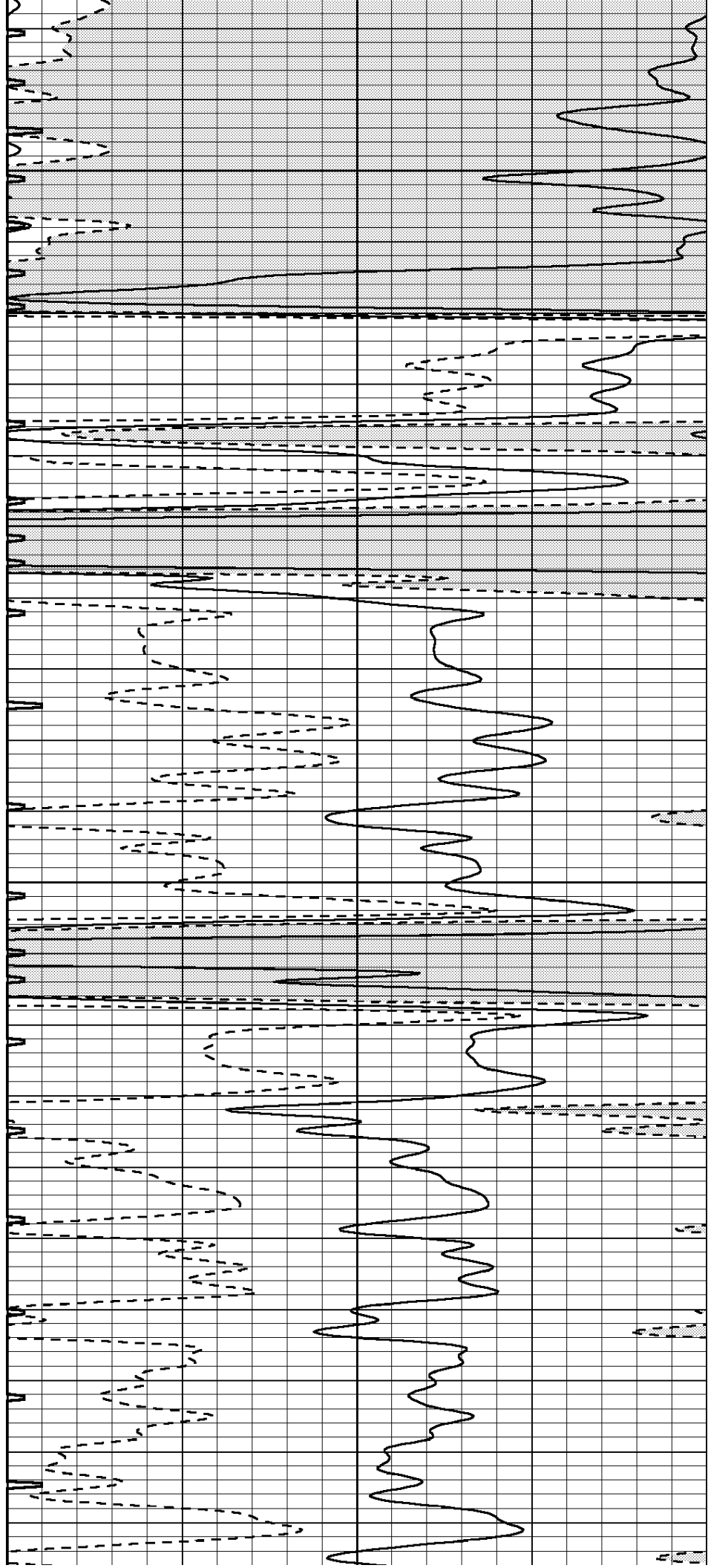


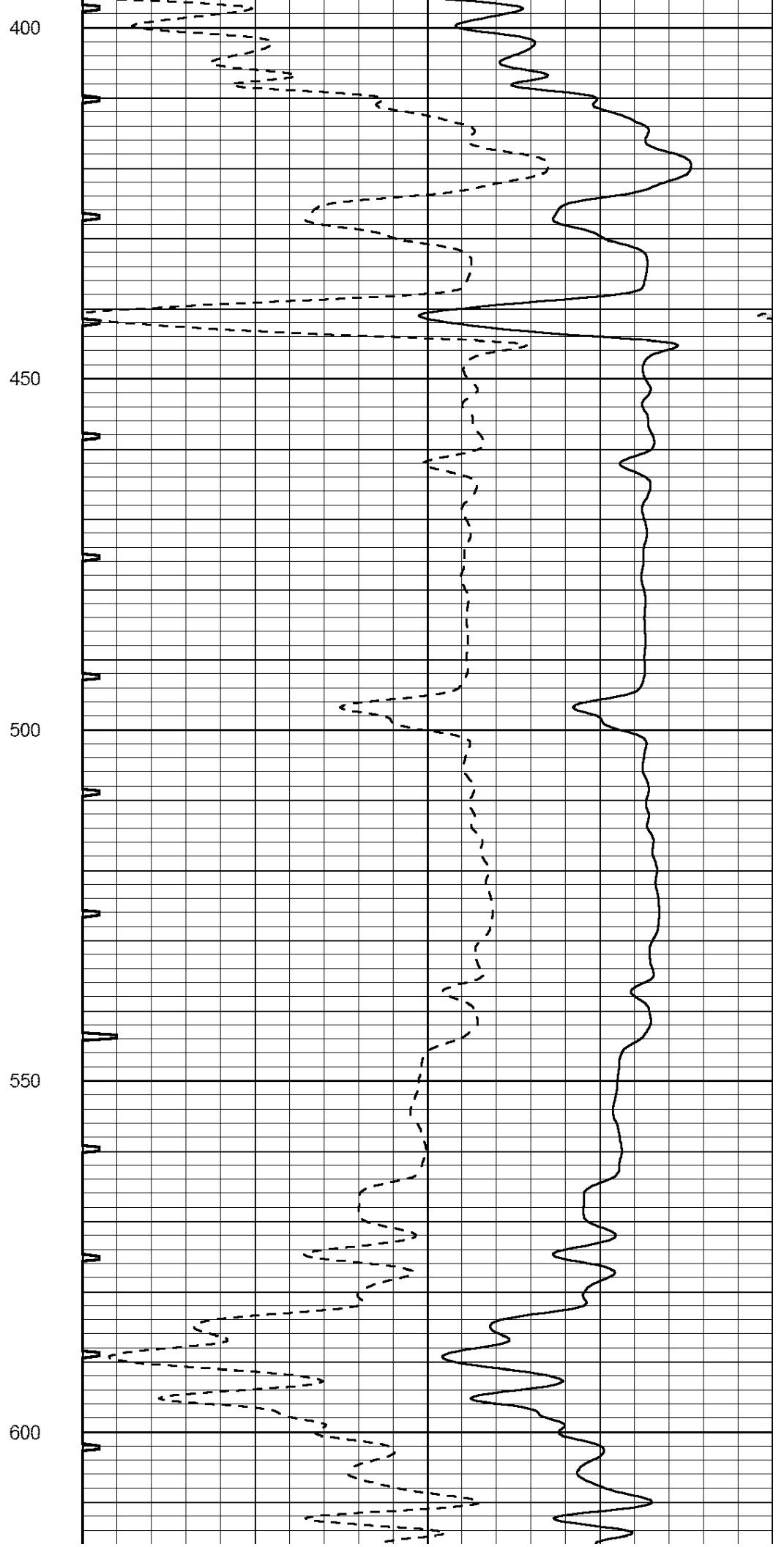
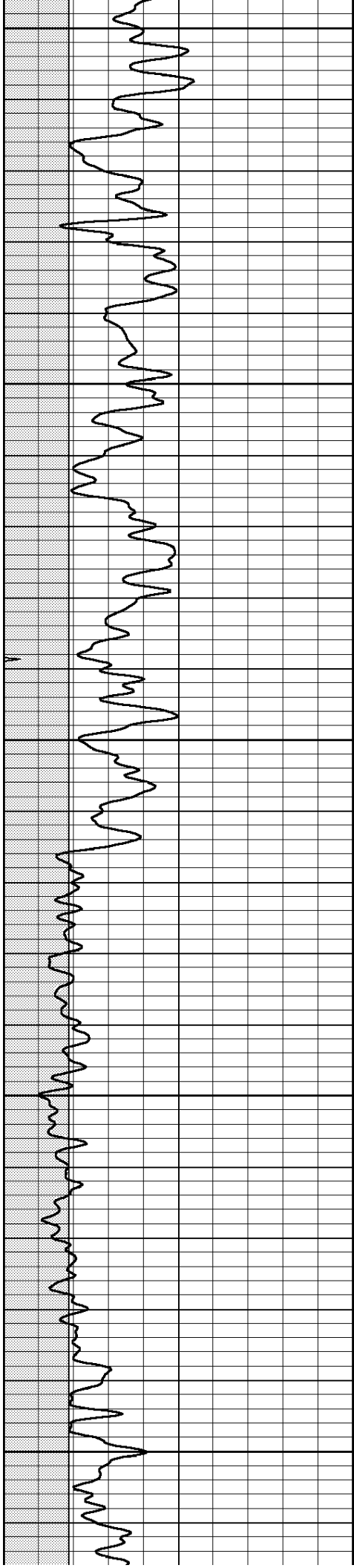
200

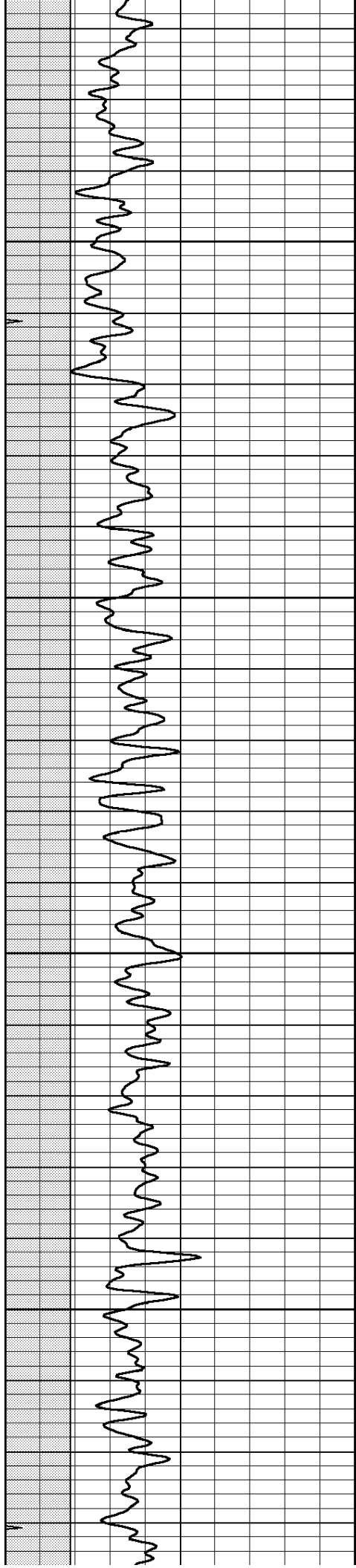
250

300

350





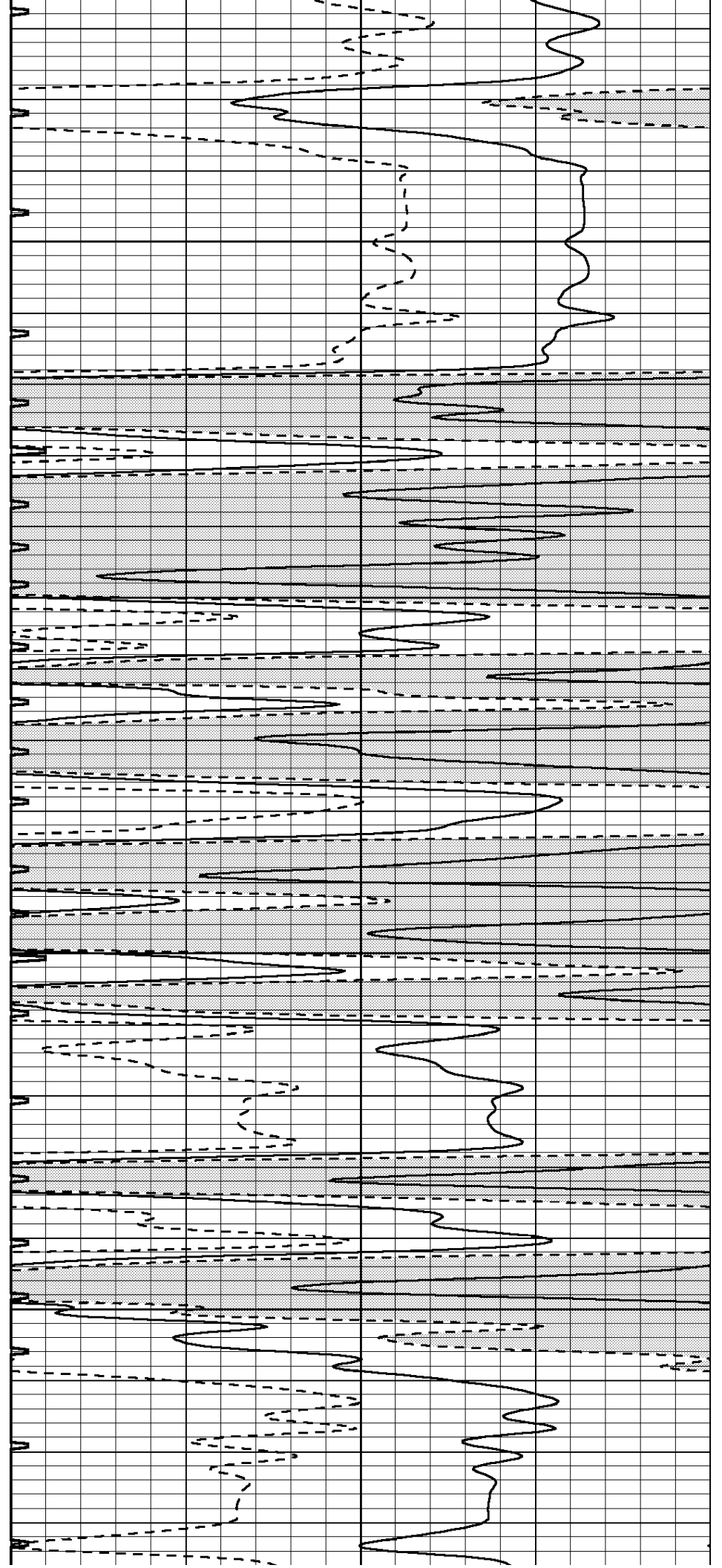


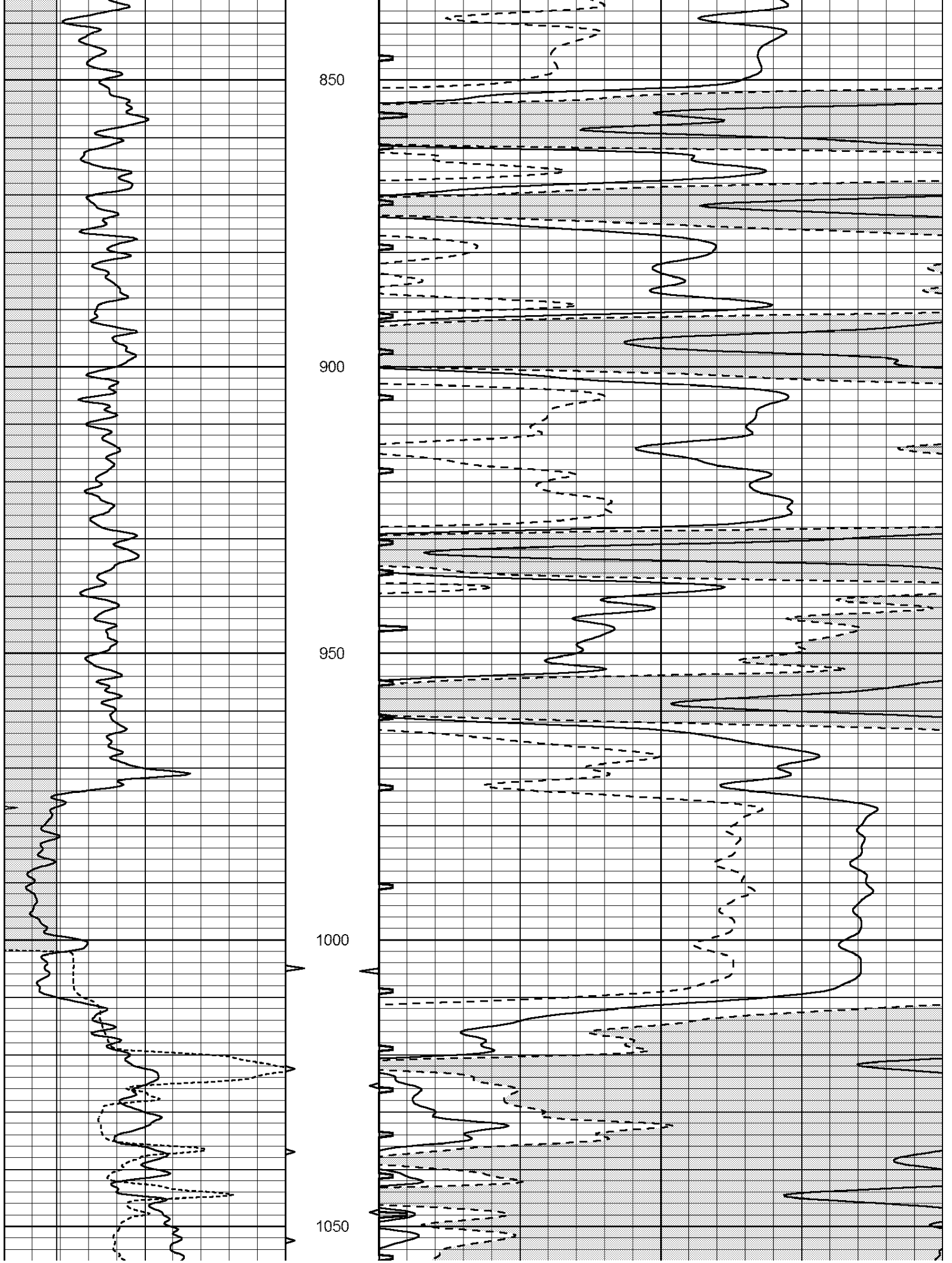
650

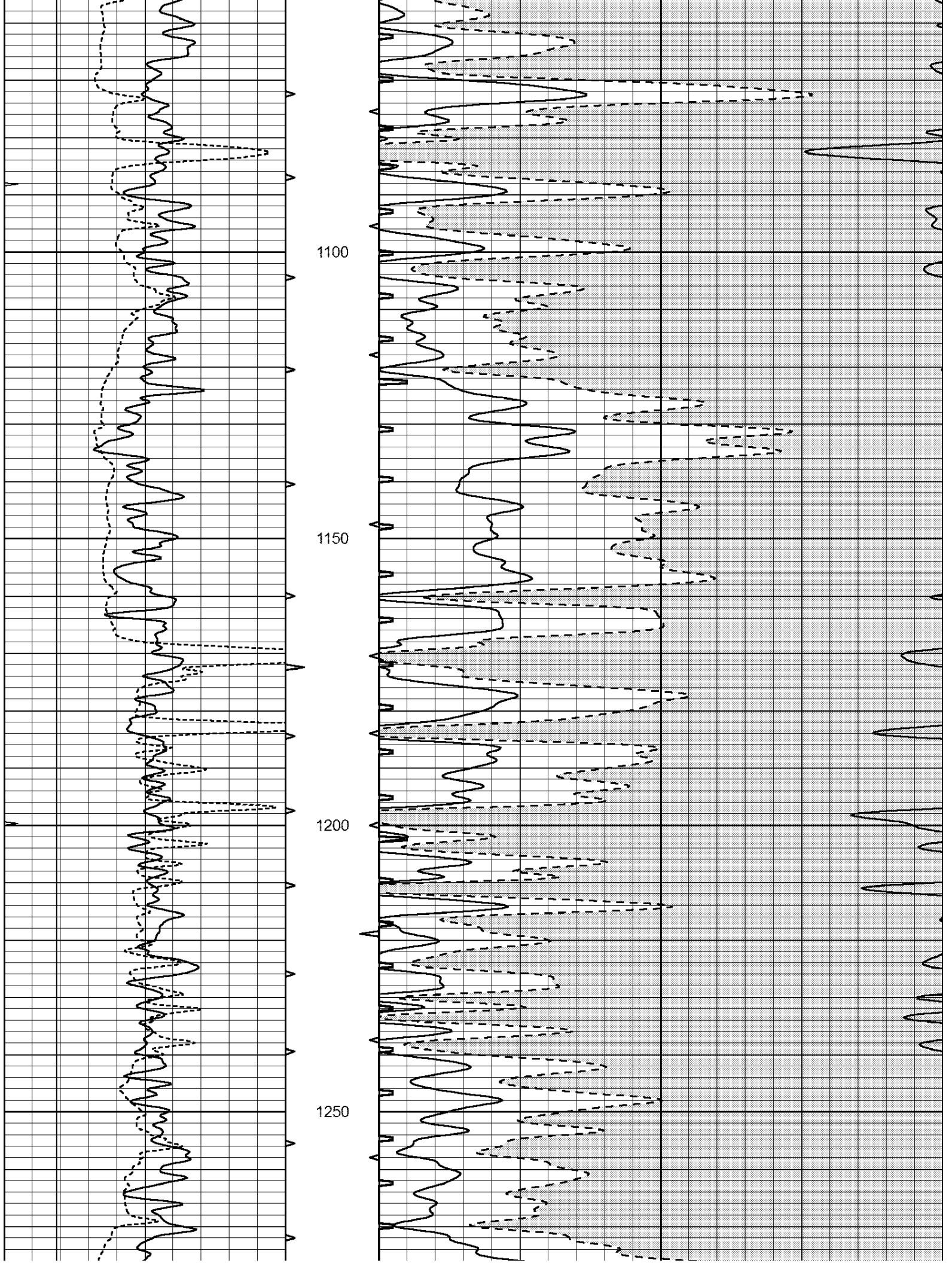
700

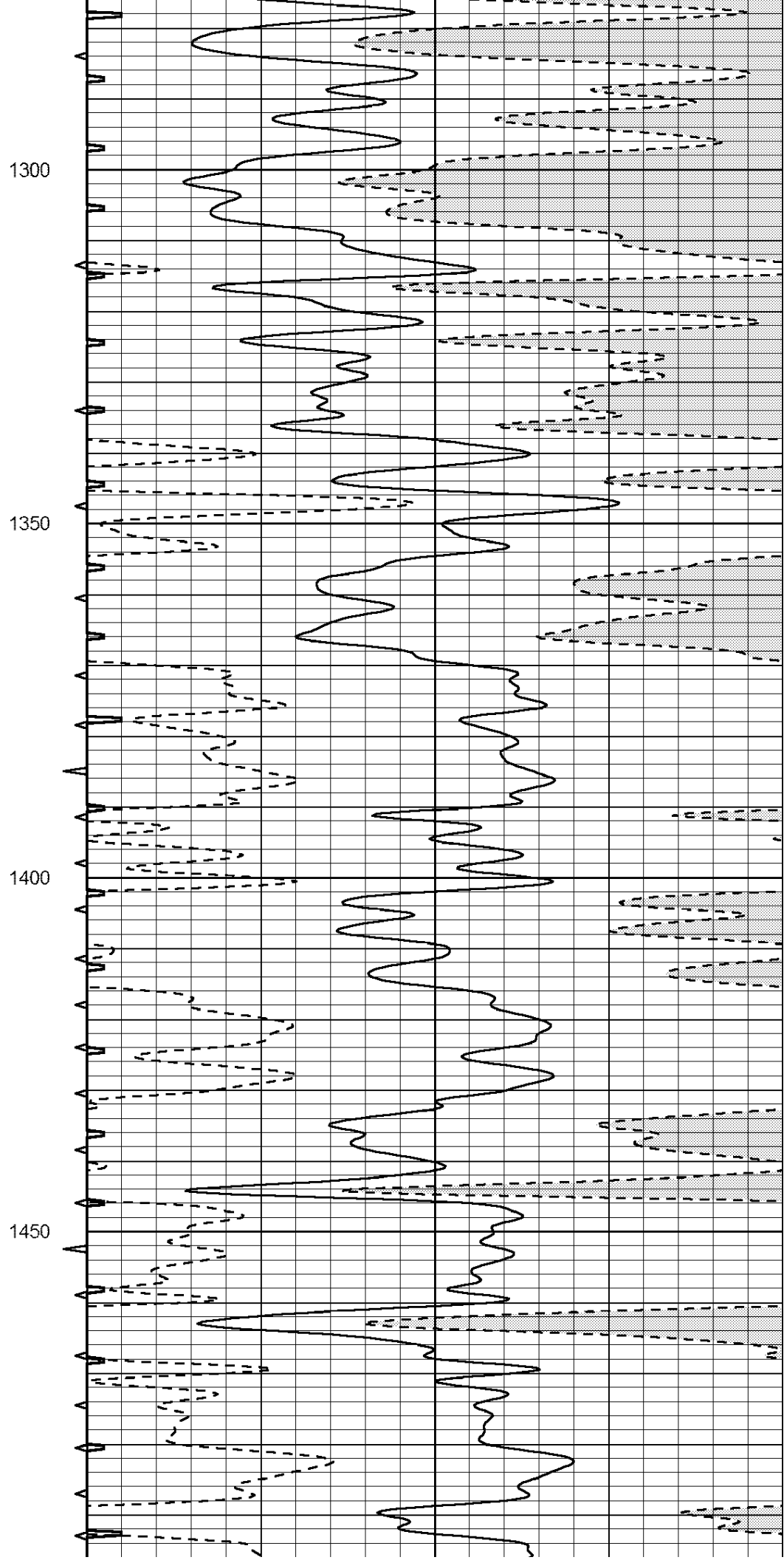
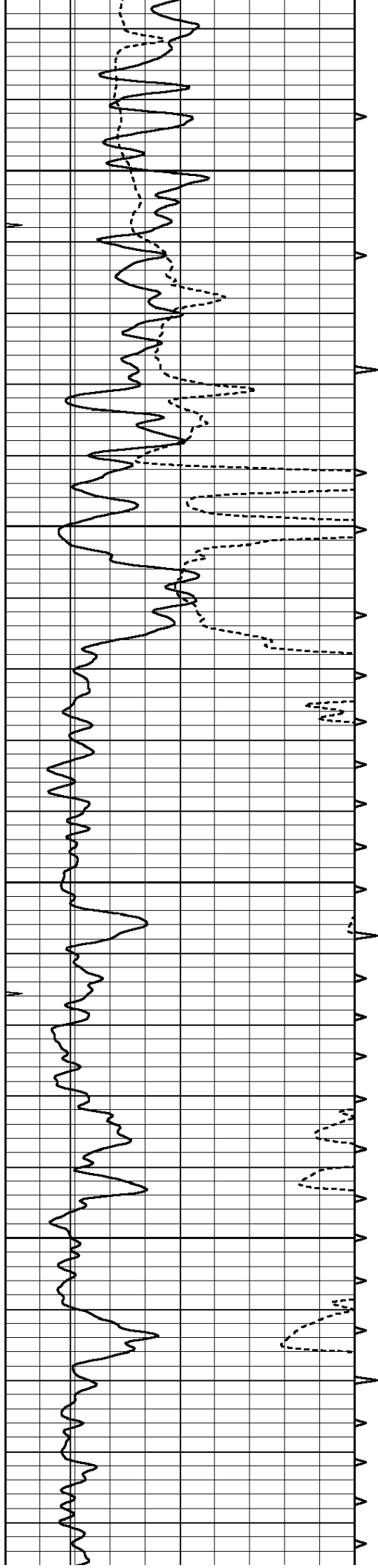
750

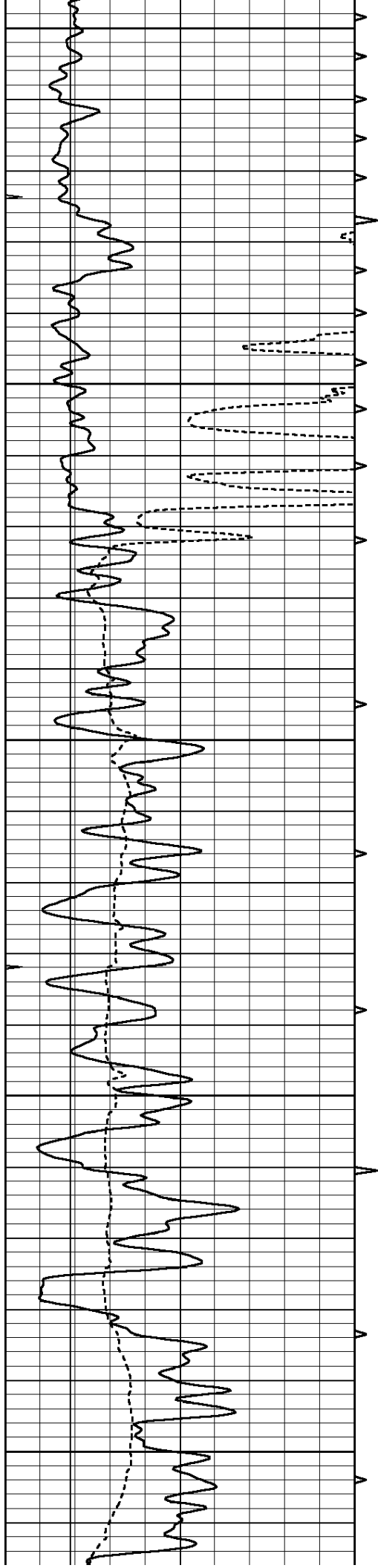
800



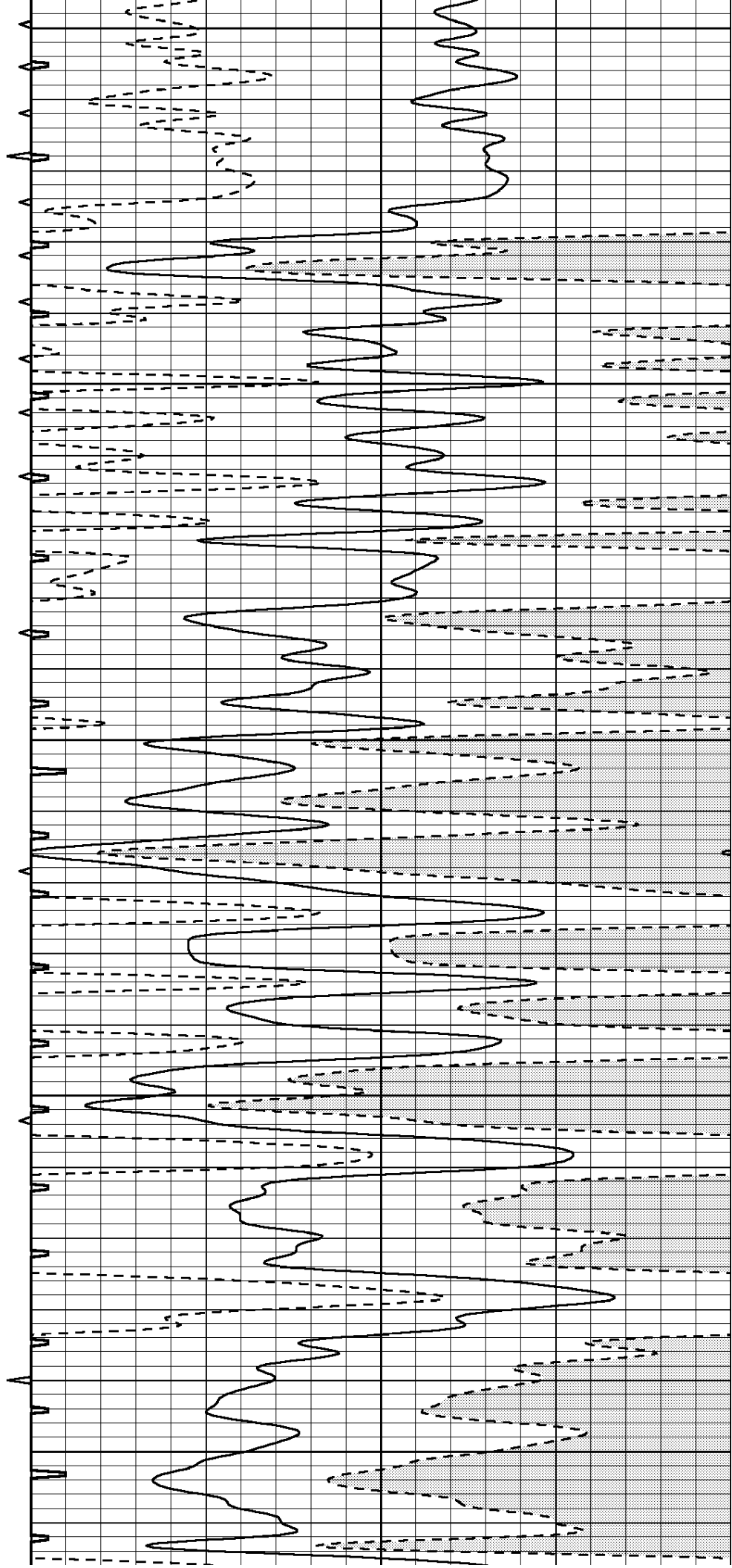


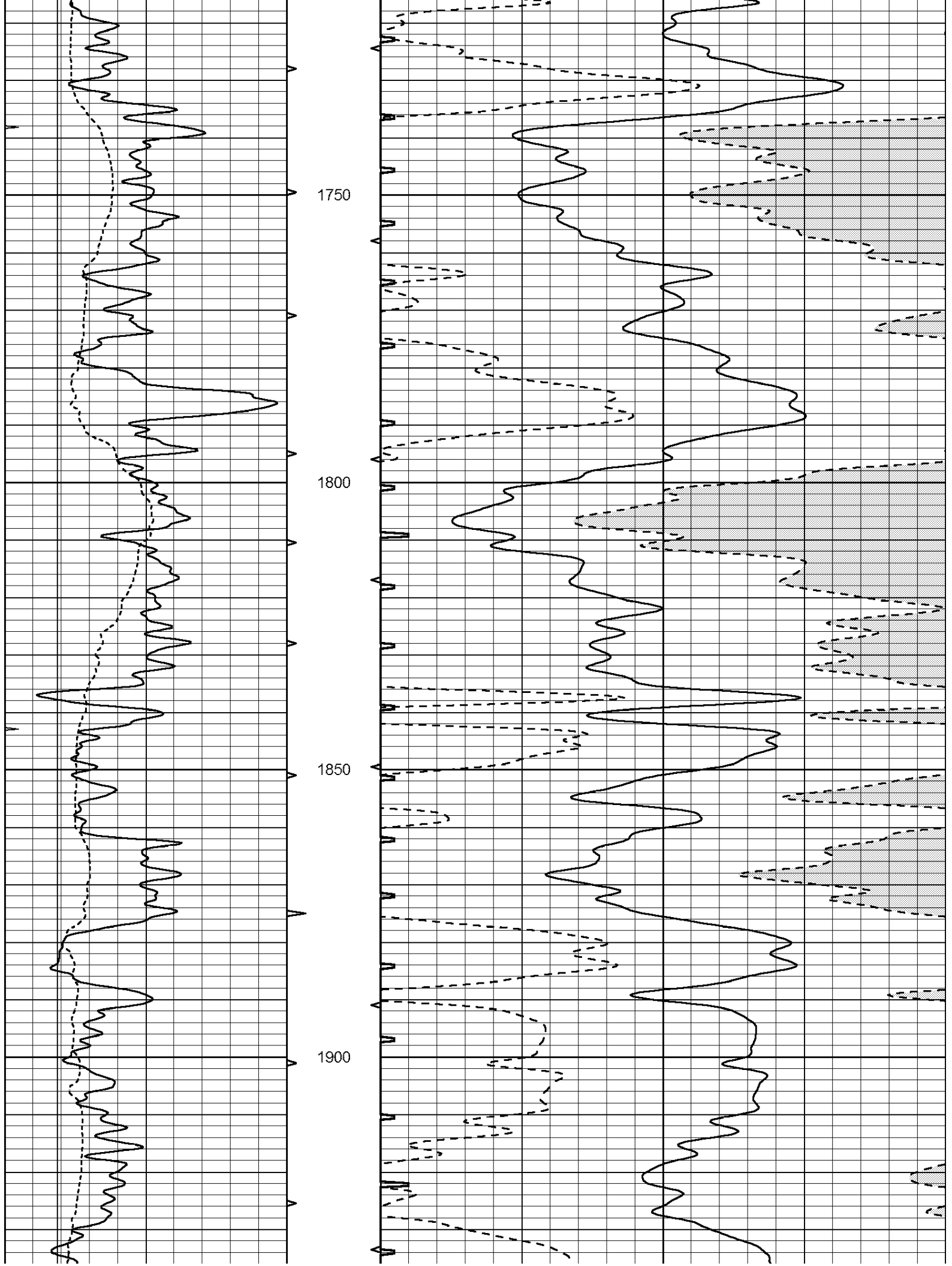


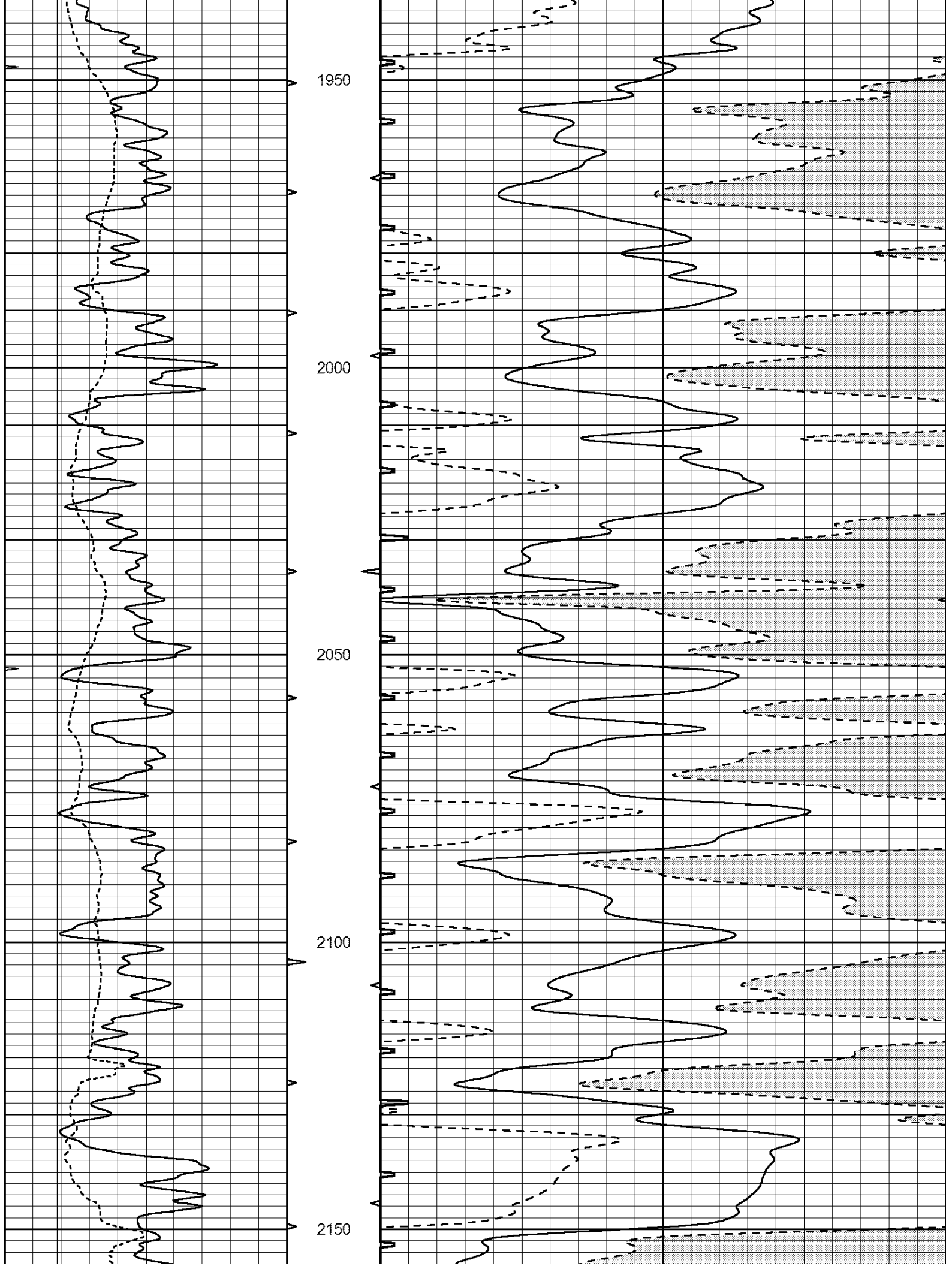


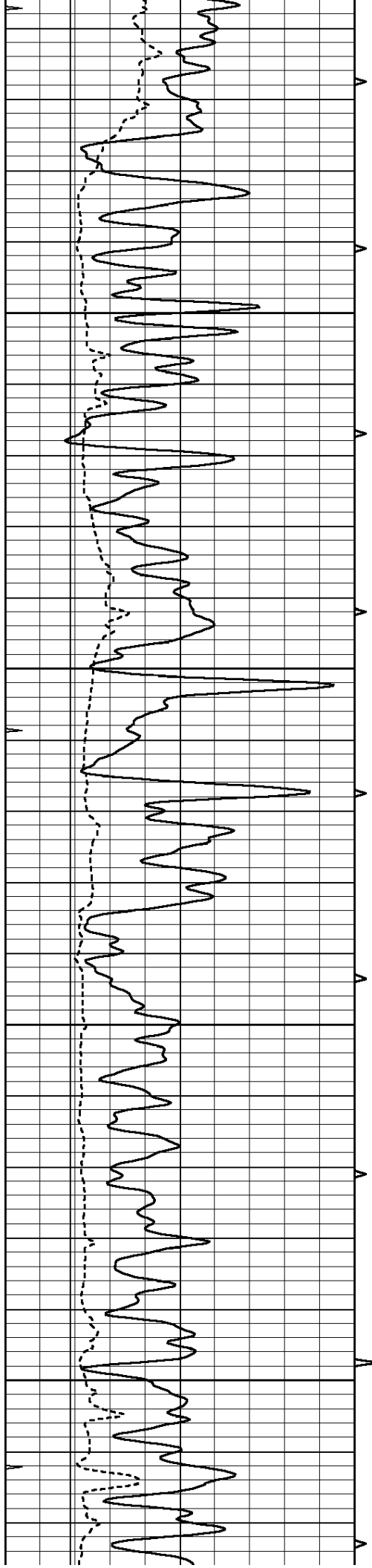


1500
1550
1600
1650
1700







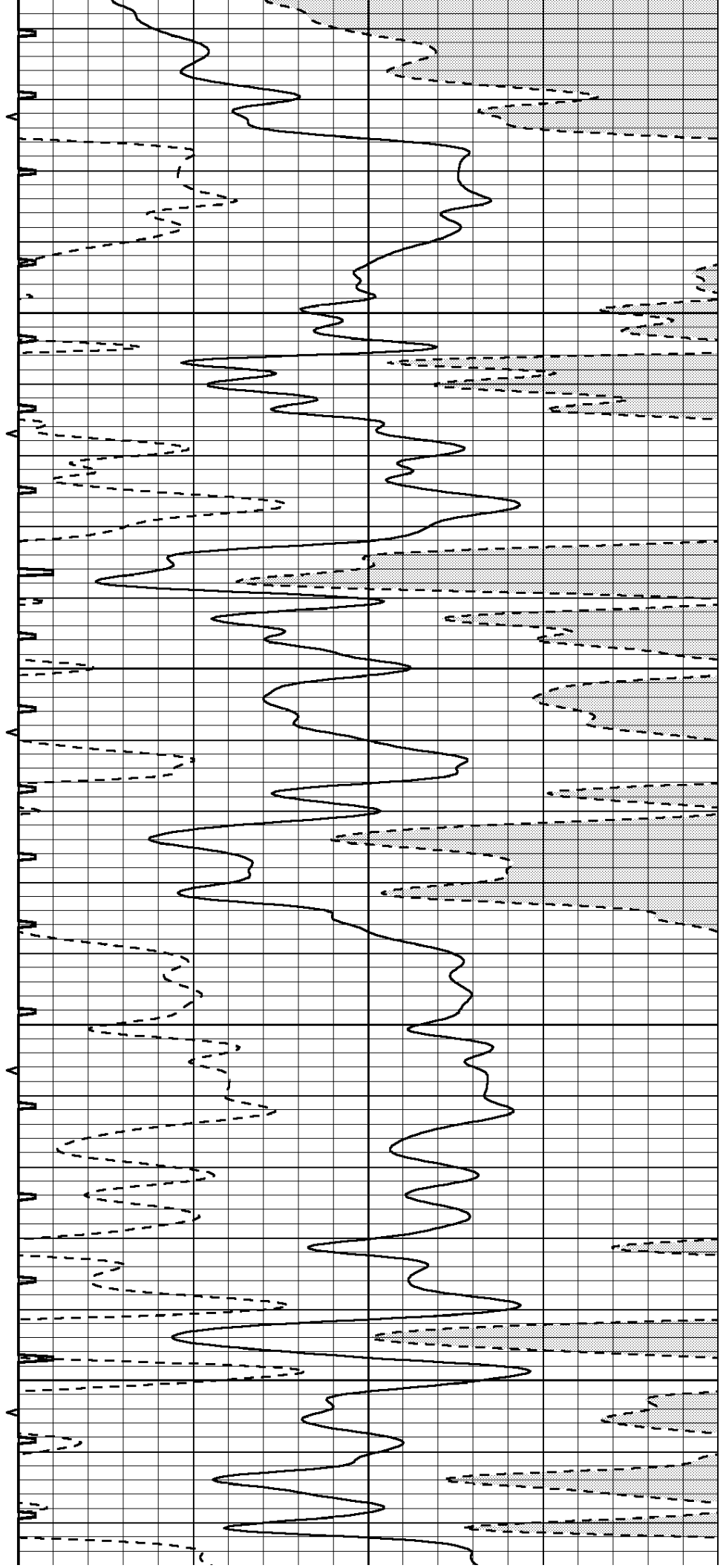


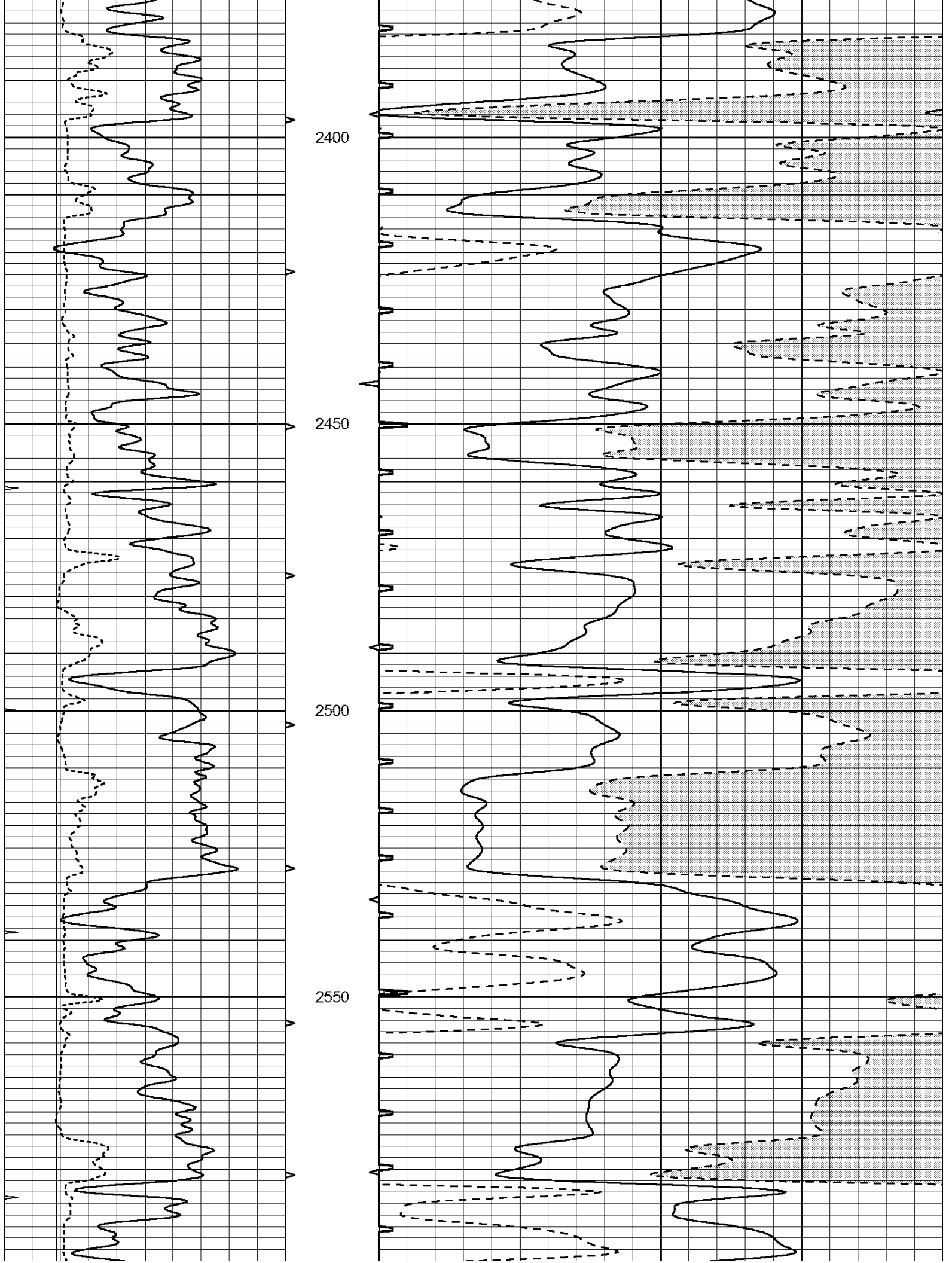
2200

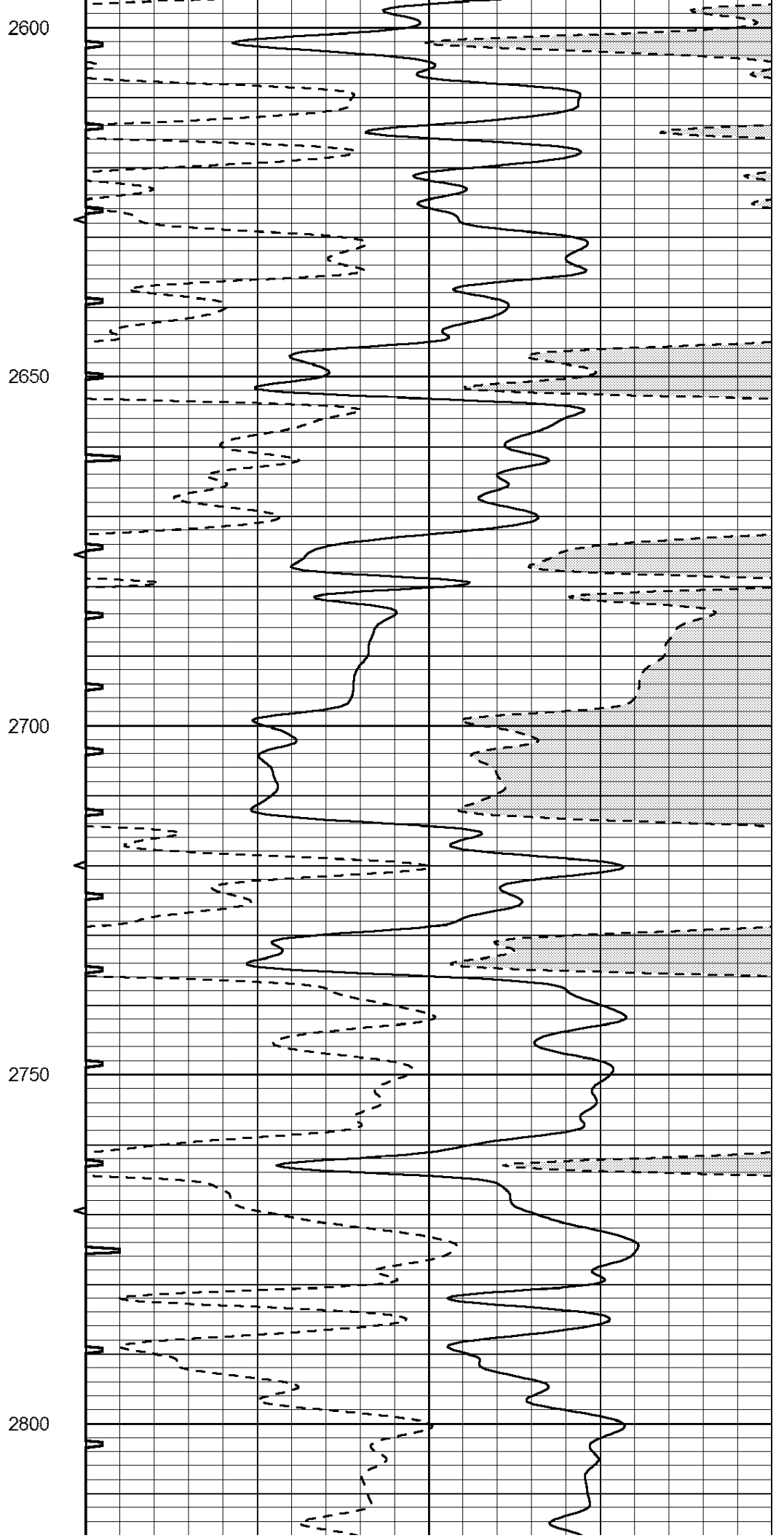
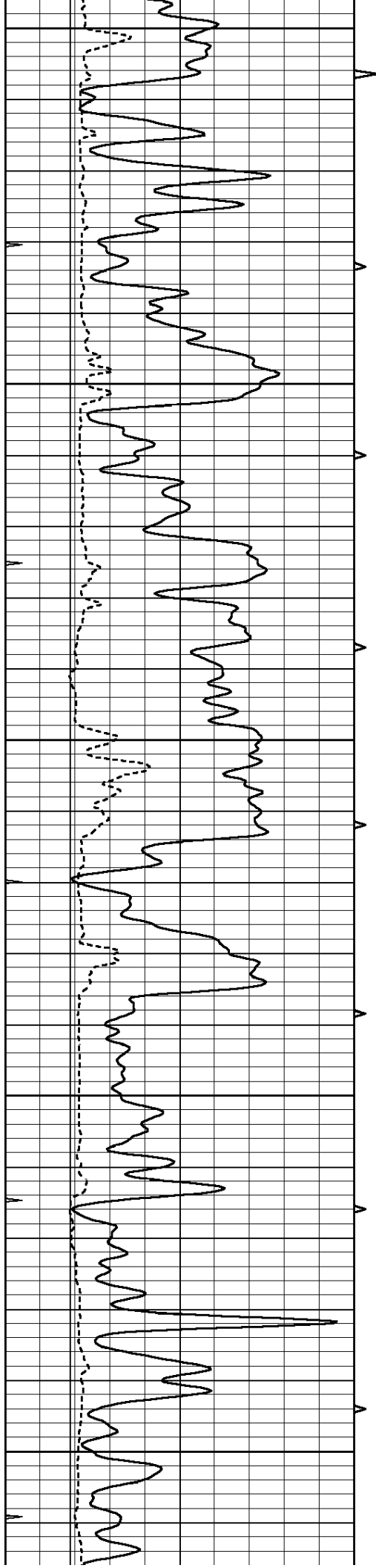
2250

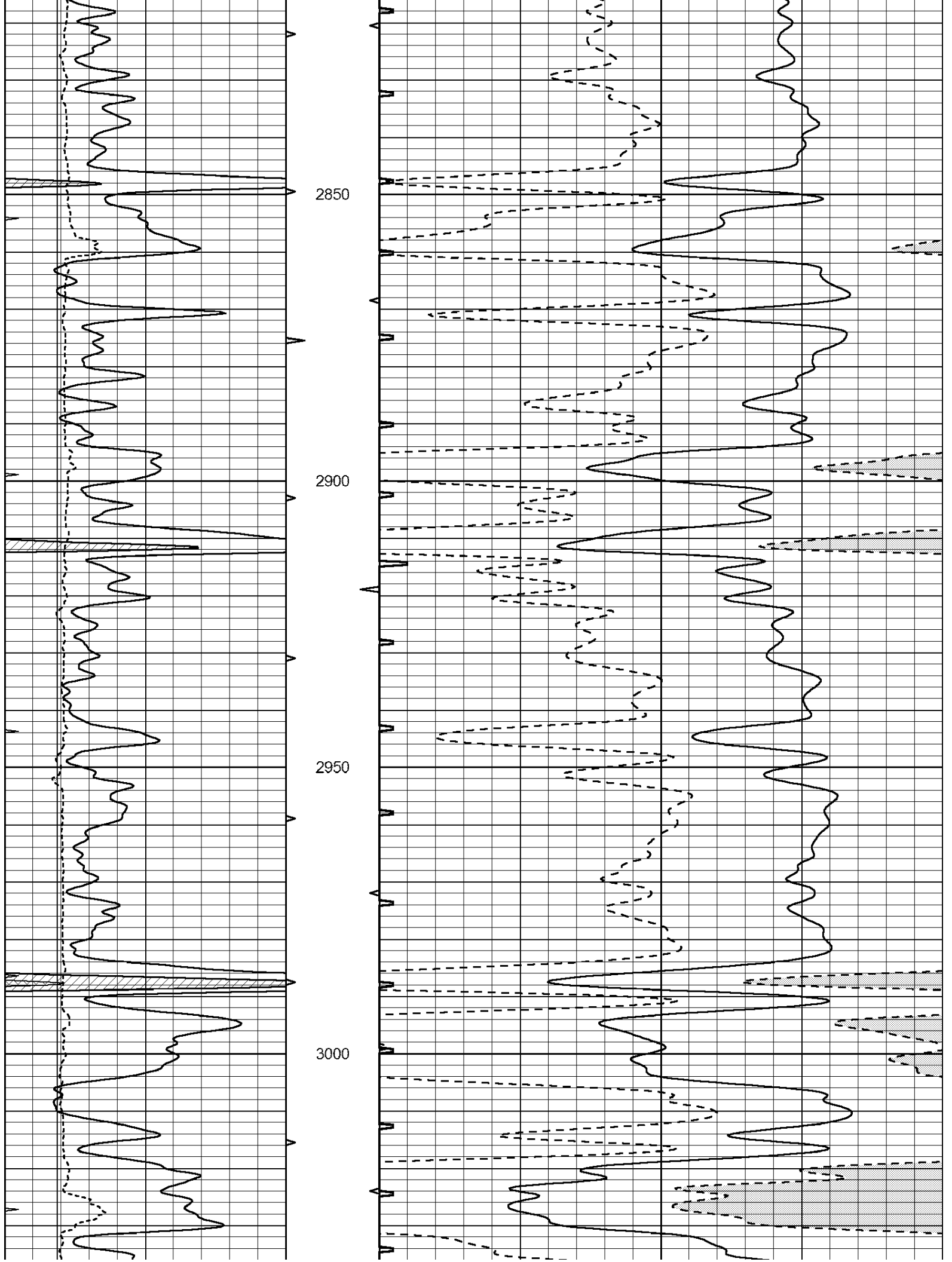
300

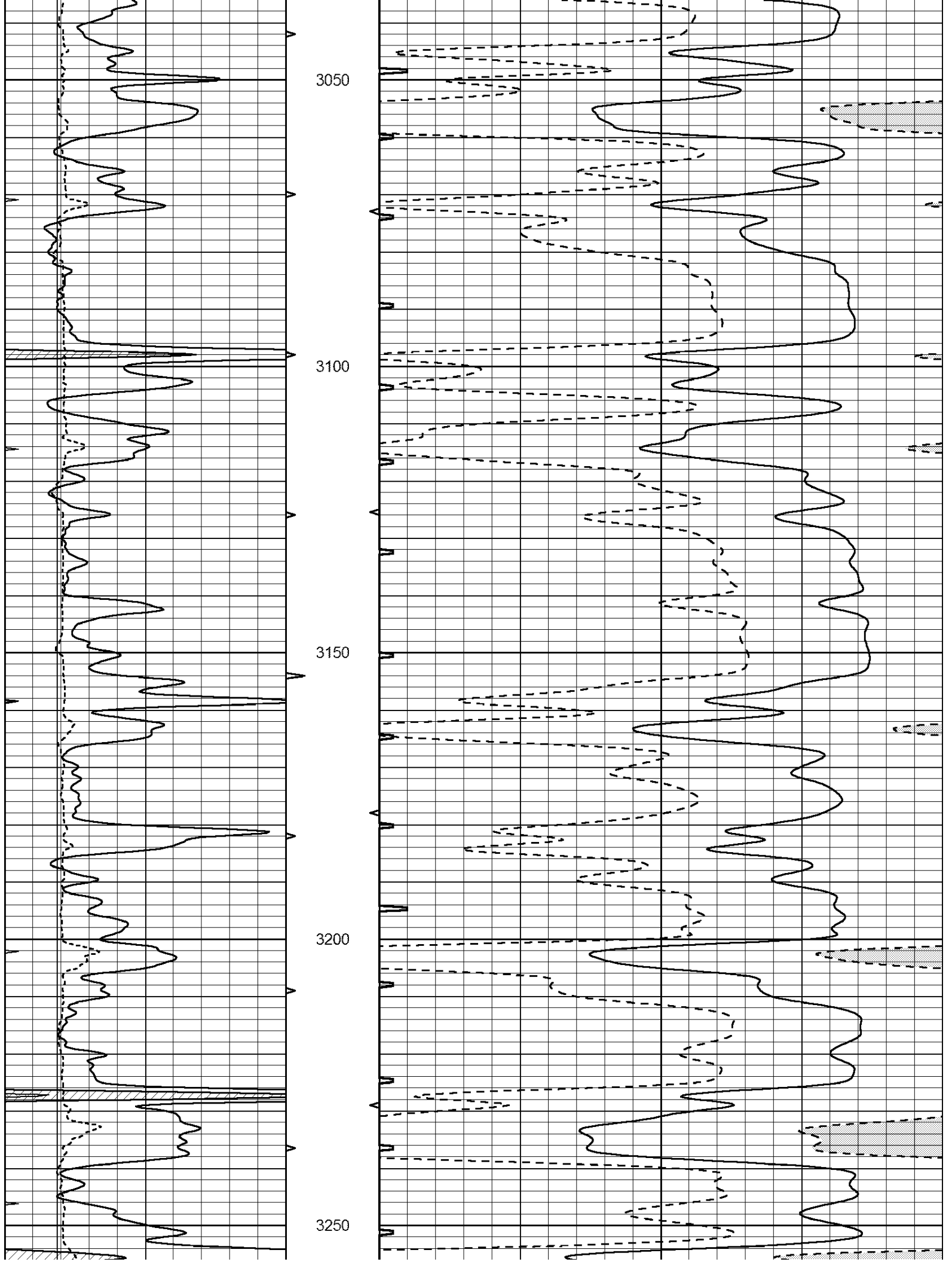
350

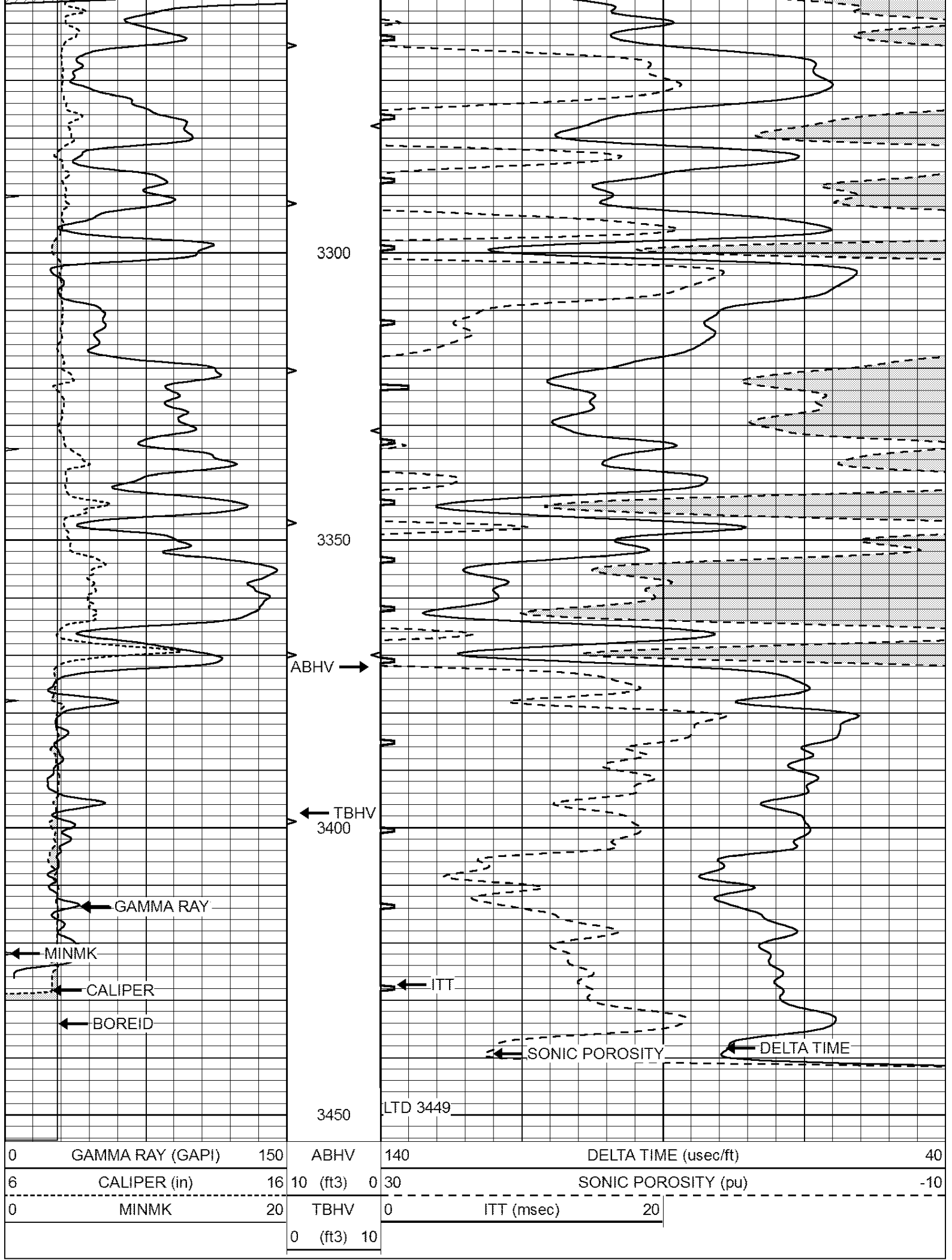




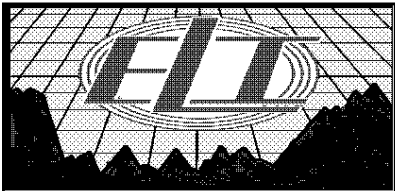








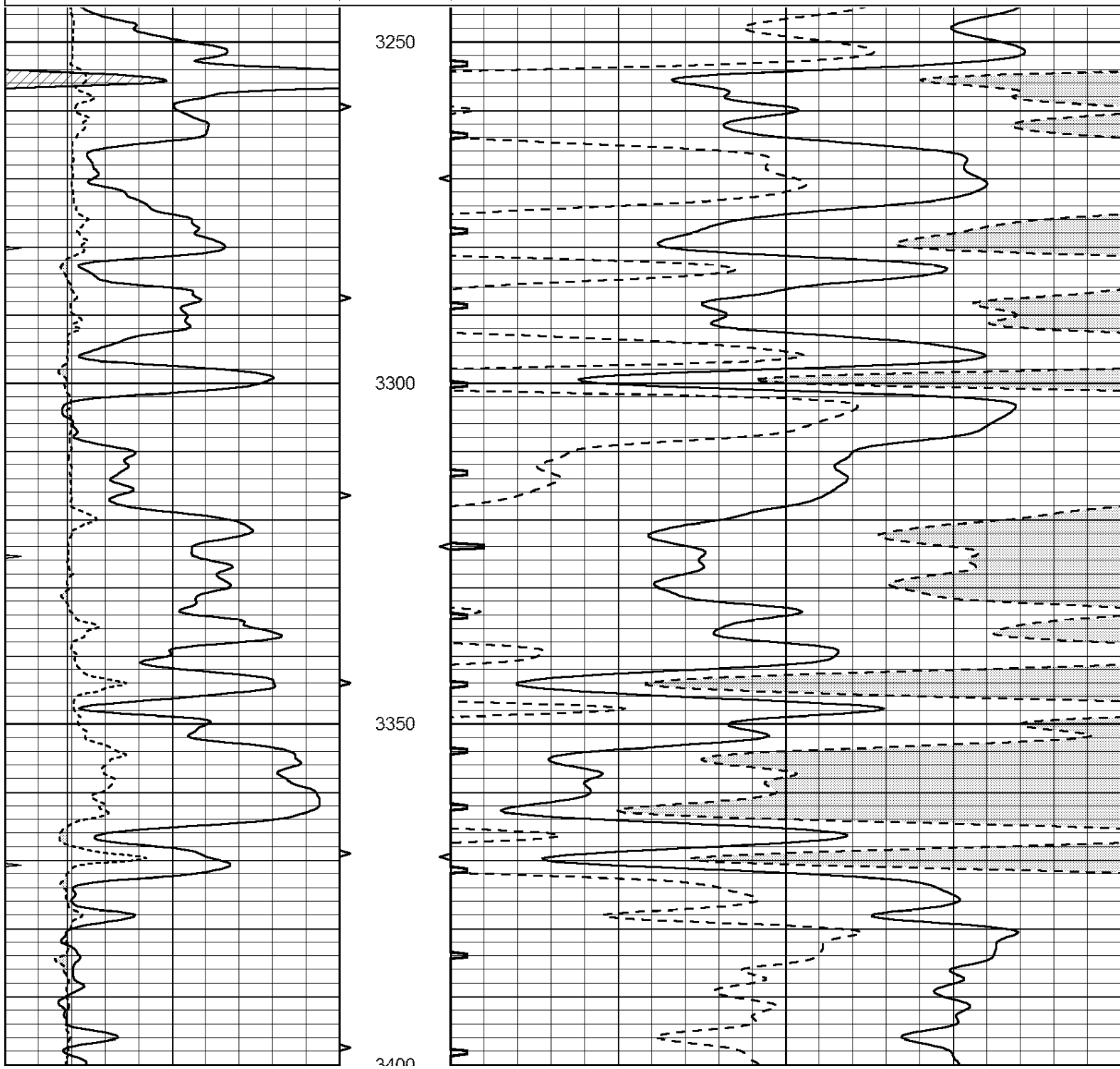
0	GAMMA RAY (GAPI)	150	ABHV	140	DELTA TIME (usec/ft)	40
6	CALIPER (in)	16	10 (ft3)	0 30	SONIC POROSITY (pu)	-10
0	MINMK	20	TBHV	0	ITT (msec)	20
			0 (ft3)	10		

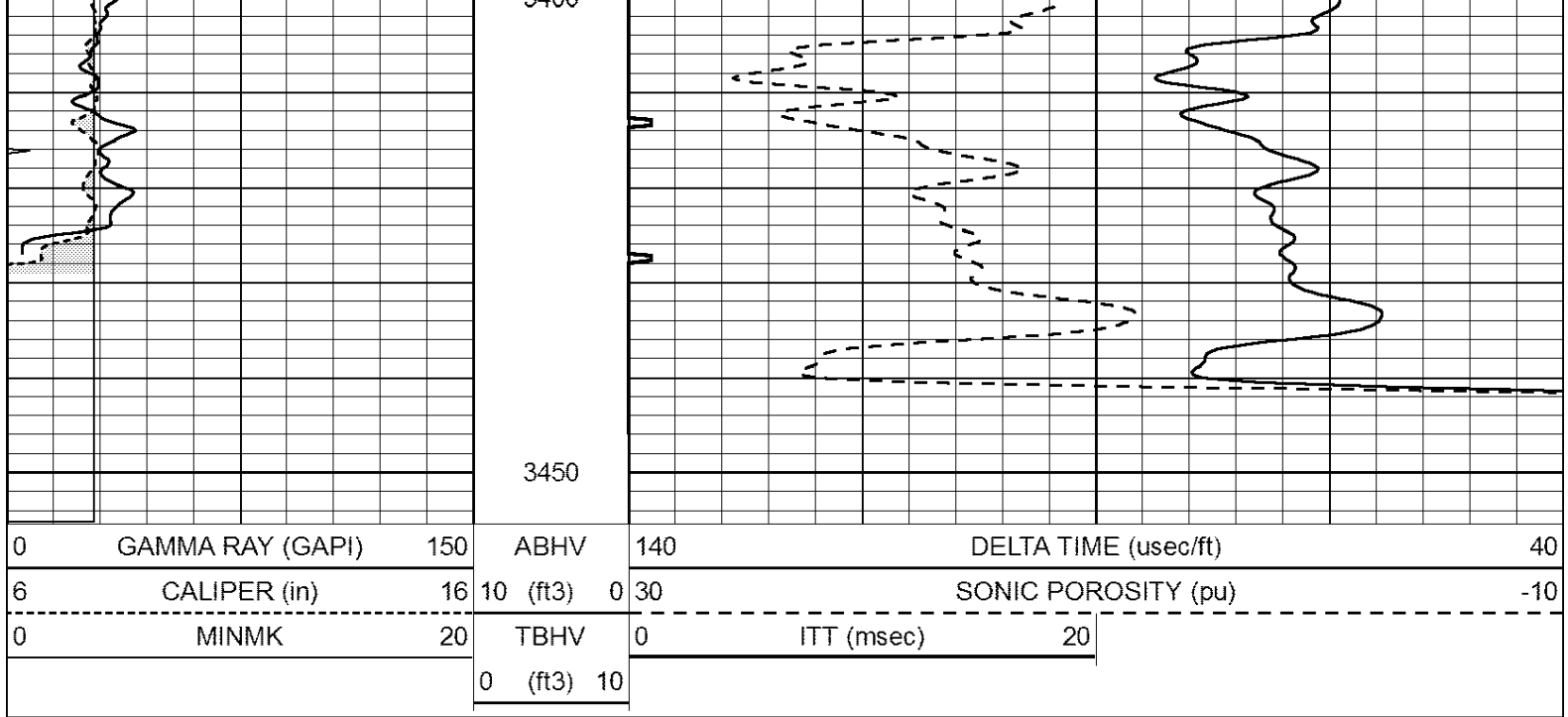


REPEAT SECTION

Database File: 4079pe.db
 Dataset Pathname: pass4.1
 Presentation Format: _slt
 Dataset Creation: Thu Aug 01 04:30:39 2019
 Charted by: Depth in Feet scaled 1:240

0	GAMMA RAY (GAPI)	150	ABHV	140	DELTA TIME (usec/ft)	40	
6	CALIPER (in)	16	10 (ft3)	0	30	SONIC POROSITY (pu)	-10
0	MINMK	20	TBHV	0	ITT (msec)	20	
			0 (ft3)	10			





Calibration Report

Database File: 4079pe.db
 Dataset Pathname: pass4.1
 Dataset Creation: Thu Aug 01 04:30:39 2019

MICRO Calibration Report

Serial Number: MICRO3
 Tool Model: PROBE
 Performed: Sat Apr 06 08:28:00 2019

Caliper Calibration: Gain=5.761 Offset=-21.702
 References Low Cal High Cal
 Readings 7.000 14.000
 5.339 6.500

1.5" Calibration: Gain=84.606 Offset=0.620
 References Low Cal High Cal
 Readings 0.000 20.000
 0.001 0.230

2" Calibration: Gain=118.028 Offset=-0.676
 References Low Cal High Cal
 Readings 0.000 20.000
 0.018 0.188

Gamma Ray Calibration Report

Serial Number: GR5
 Tool Model: OPEN
 Performed: Thu Jul 11 09:33:22 2019

Calibrator Value: 1.0 GAPI
 Background Reading: 0.0 cps
 Calibrator Reading: 1.0 cps
 Sensitivity: 0.5400 GAPI/cps