



**MICRO
LOG**

Company IA OPERATING, INC.
Well CARRIE #2-5
Field BLUE HILL NORTHWEST
County ELLIS
State KANSAS

Company IA OPERATING, INC.
Well CARRIE #2-5
Field BLUE HILL NORTHWEST
County ELLIS State KANSAS

Location: API # : 15-051-26958-0000
2180' FSL & 1460' FWL
SEC 2 TWP 12S RGE 16W
Permanent Datum GROUND LEVEL Elevation 1815
Log Measured From KELLY BUSHING & A.G.L.
Drilling Measured From KELLY BUSHING
Other Services CDL/CNL/DIL SON
Elevation K.B. 1823
D.F. 1821
G.L. 1815

Date	08/01/19
Run Number	TWO
Depth Driller	3450
Depth Logger	3449
Bottom Logged Interval	3429
Top Log Interval	2500
Casing Driller	8 5/8" @ 983
Casing Logger	983
Bit Size	7 7/8"
Type Fluid in Hole	CHEMICAL MUD
Density / Viscosity	9.0/56
pH / Fluid Loss	10.0/8.8
Source of Sample	FLOWLINE
Rm @ Meas. Temp	.5 @ 86F
Rmt @ Meas. Temp	.38 @ 86F
Rmc @ Meas. Temp	.60 @ 86F
Source of Rmf / Rmc	MEASURED
Rm @ BHT	.38 @ 111F
Time Circulation Stopped	2 HOURS
Time Logger on Bottom	////
Maximum Recorded Temperature	111F
Equipment Number	1523
Location	HAYS, KANSAS
Recorded By	GUS PFANENSTIEL
Witnessed By	JEFF LAWLER

<<< Fold Here >>>

All interpretations are opinions based on inferences from electrical or other measurements and we cannot and do not guarantee the accuracy or correctness of any interpretation, and we shall not, except in the case of gross or willful negligence on our part, be liable or responsible for any loss, costs, damages, or expenses incurred or sustained by anyone resulting from any interpretation made by any of our officers, agents or employees. These interpretations are also subject to our general terms and conditions set out in our current Price Schedule.

Comments

THANK YOU FOR USING ELI WIRELINE, HAYS, KS. (785) 628-6395

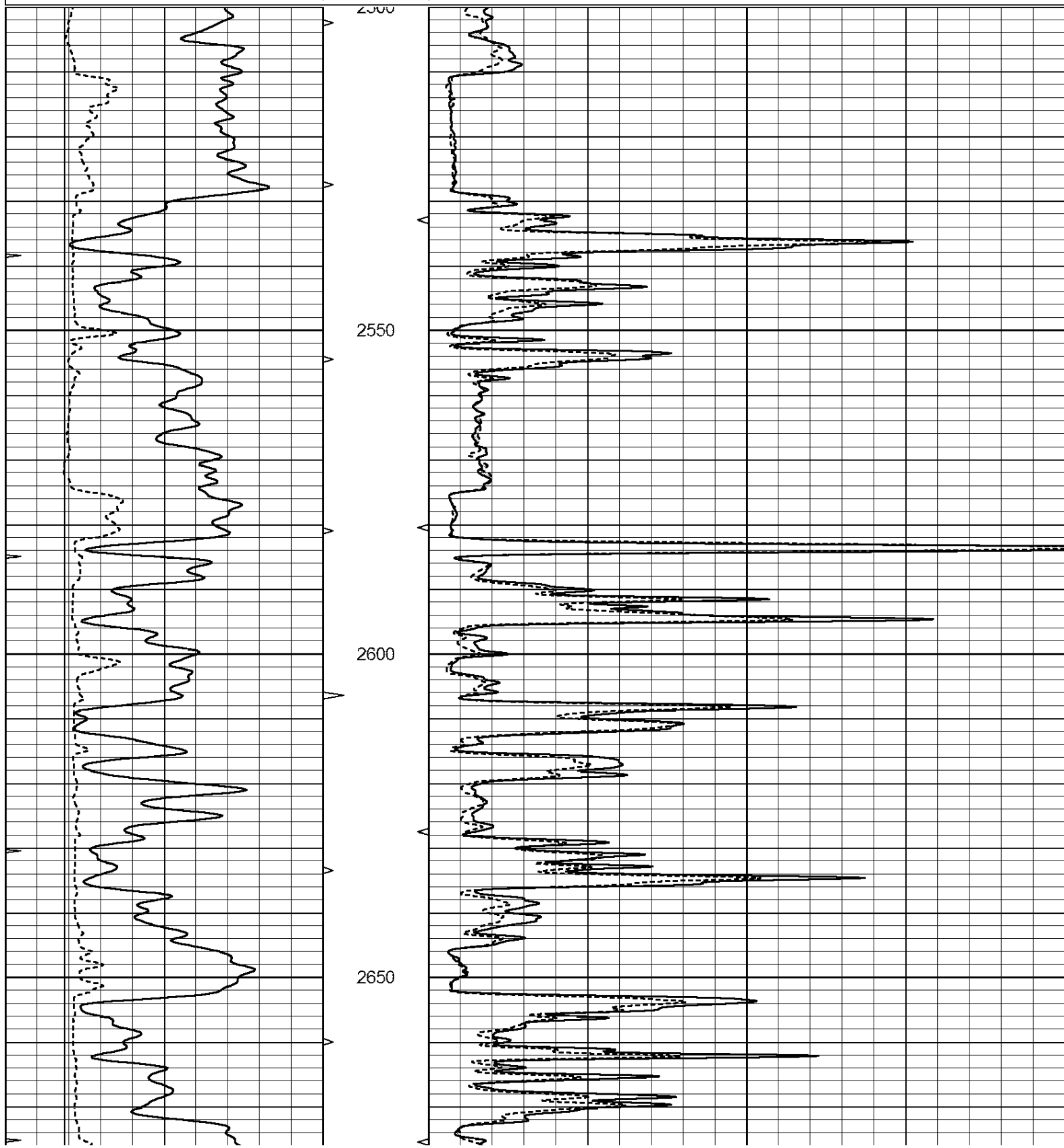
DIRECTIONS
BLUE HILL SCHOOL HOUSE NORTH TO HOMESTEAD RD.
EAST 1 1/4 MILE, SOUTH INTO.

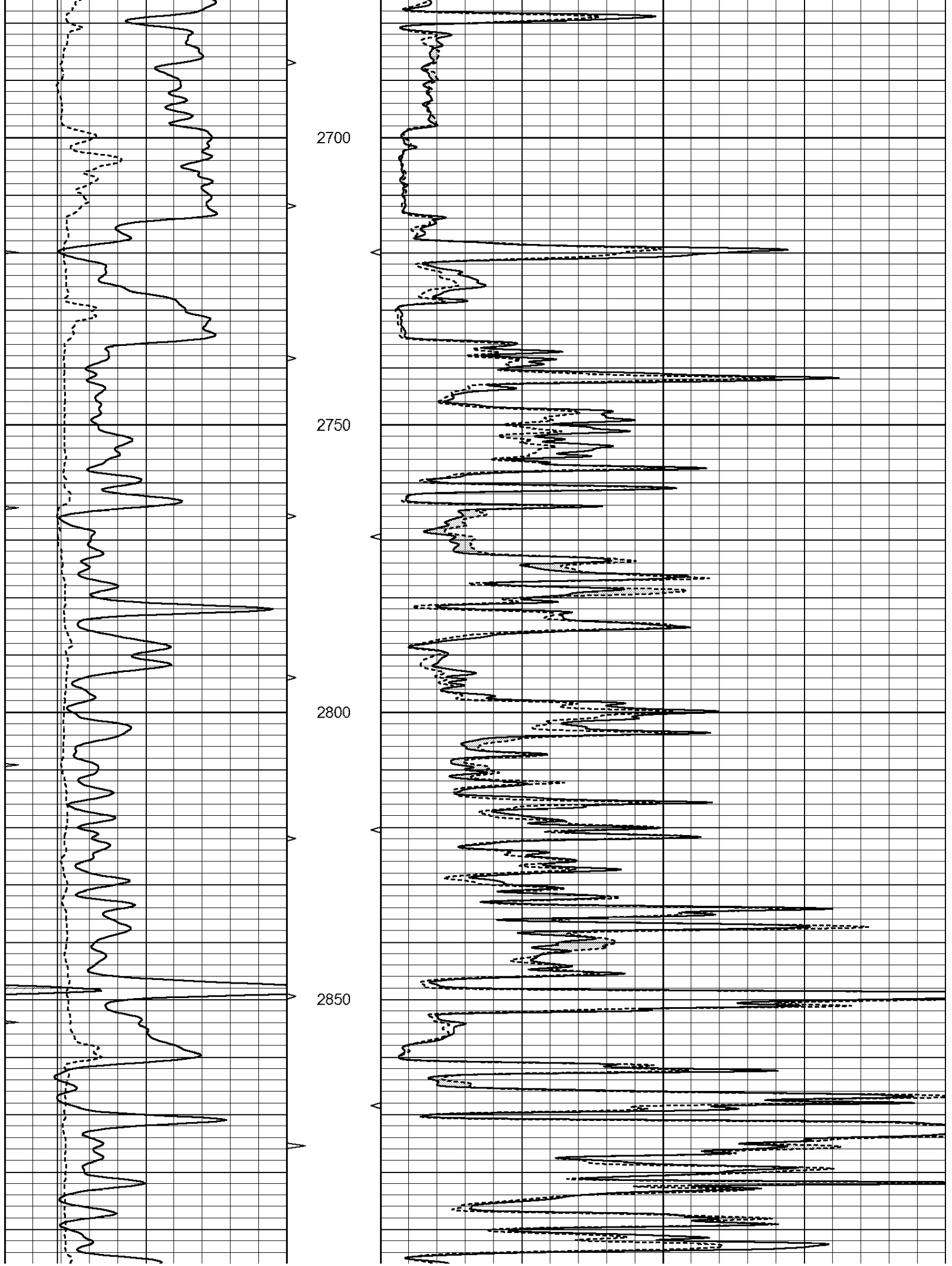


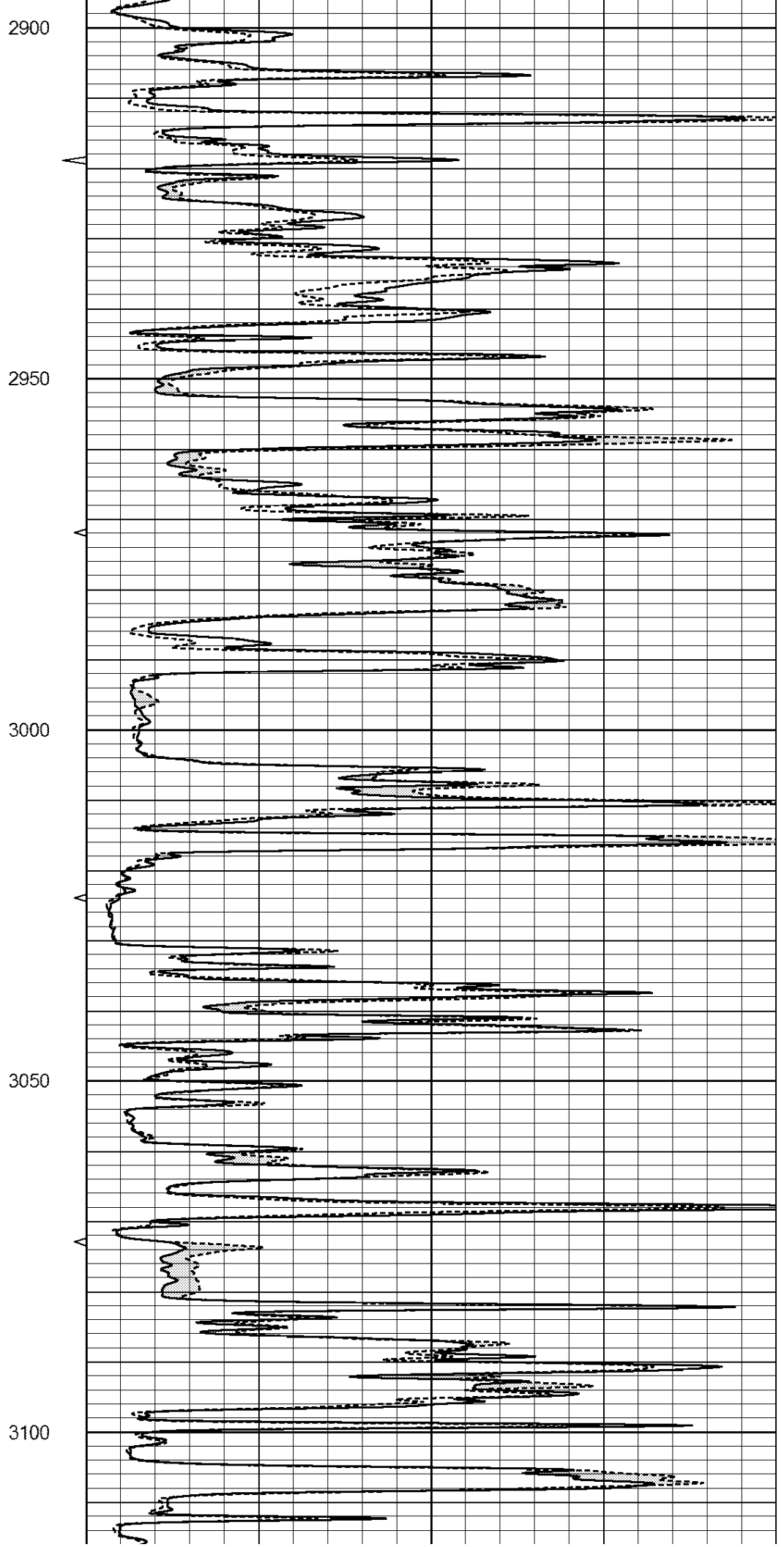
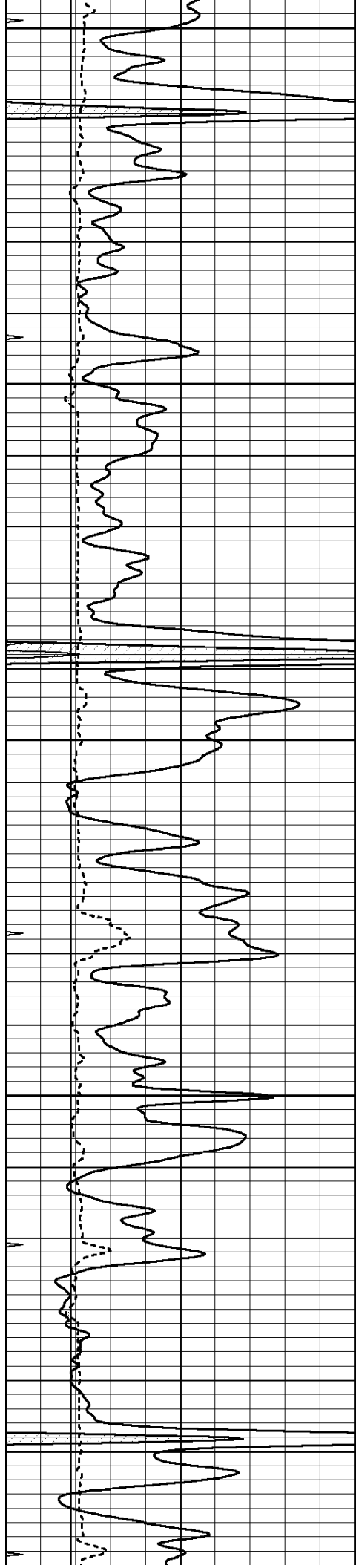
MAIN PASS

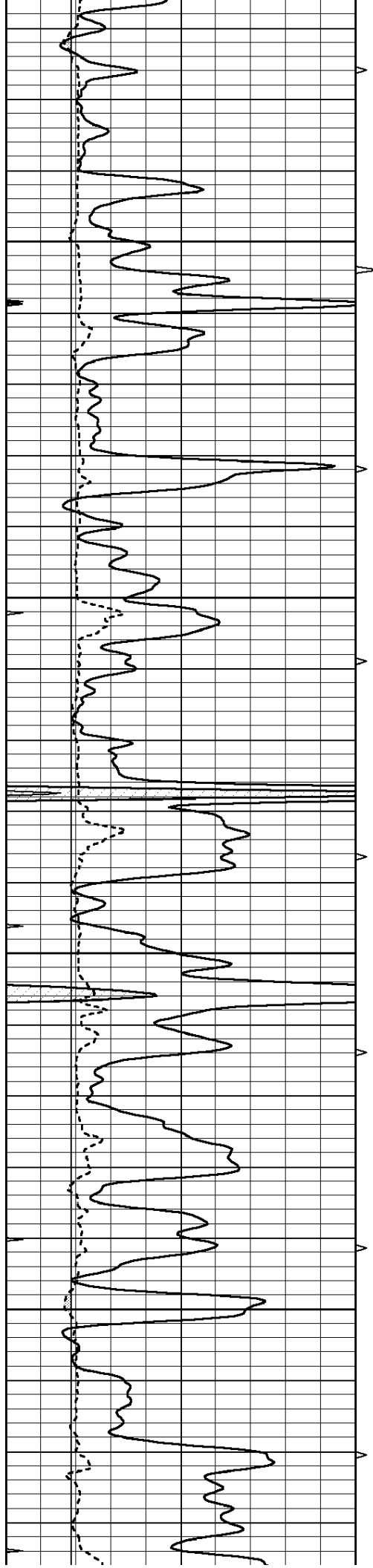
Database File: 4079pe.db
 Dataset Pathname: pass5MIC
 Presentation Format: _micro
 Dataset Creation: Thu Aug 01 04:47:29 2019
 Charted by: Depth in Feet scaled 1:240

0	GAMMA RAY (GAPI)	150	ABHV	0	MEL1.5 (Ohm-m)	40
6	CALIPER (in)	16	10 (ft3)	0	MEL2.0 (Ohm-m)	40
0	MINMK	20	TBHV			
			0 (ft3)	10		







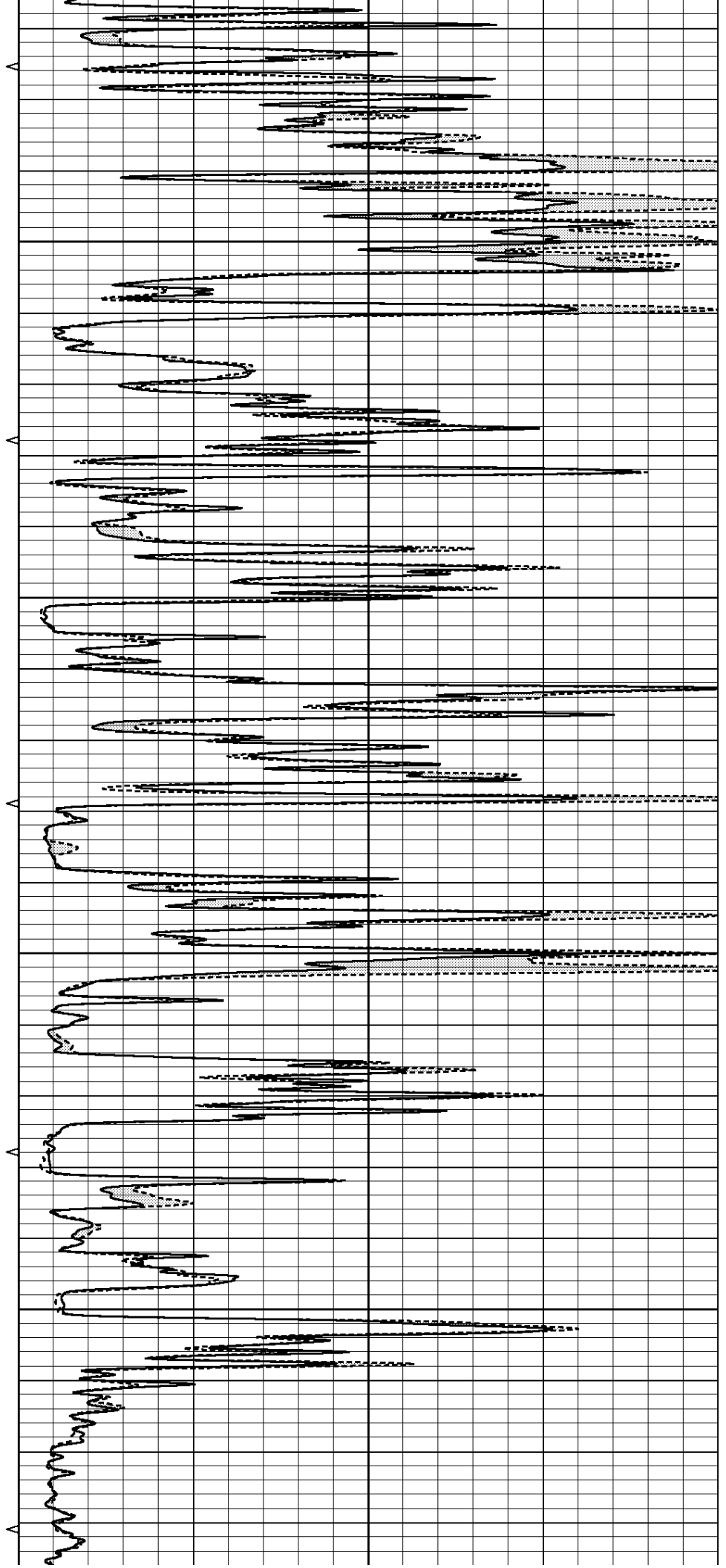


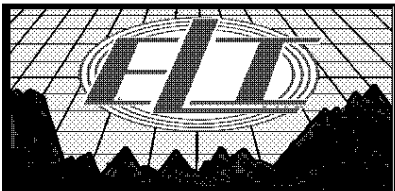
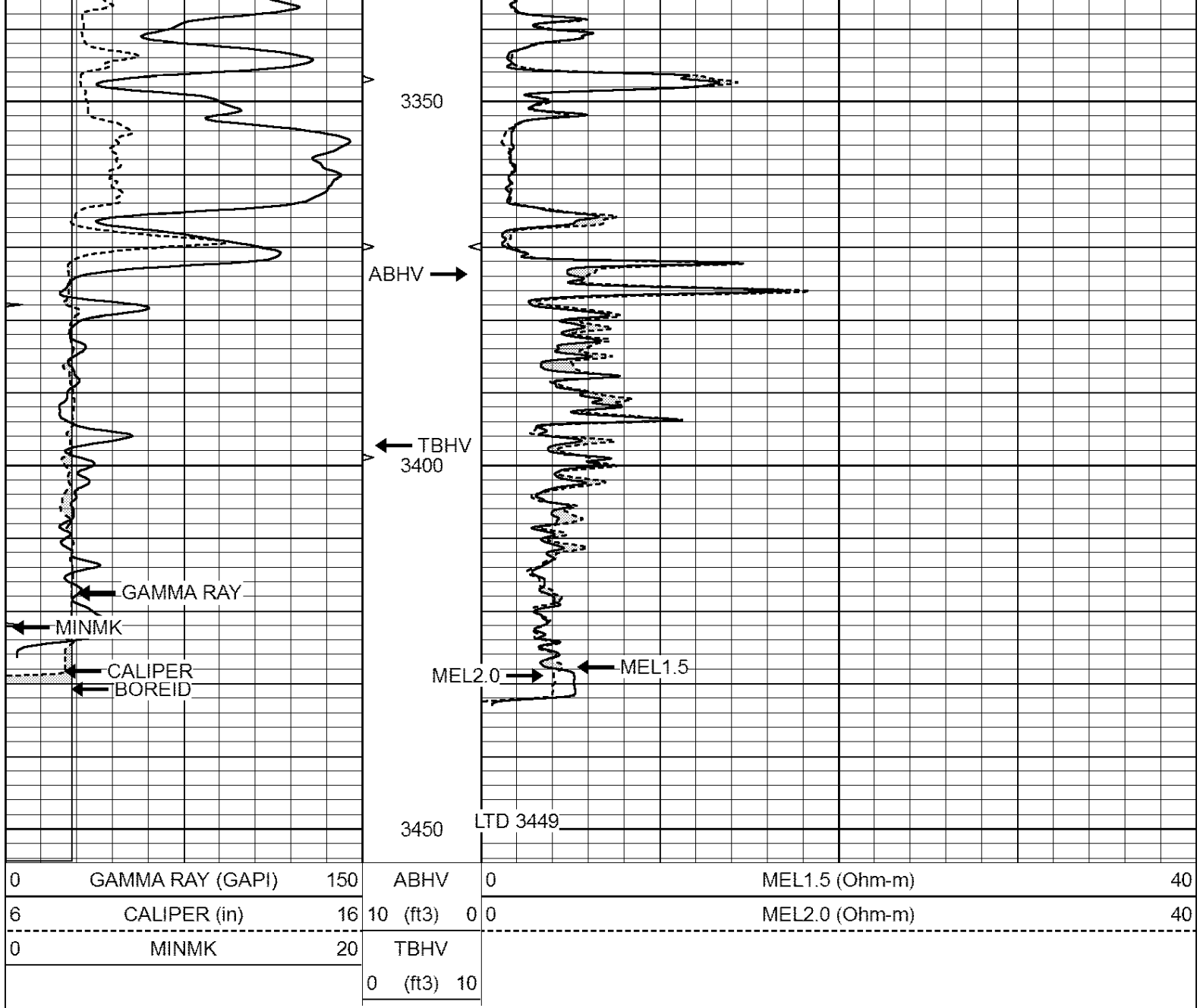
3150

3200

3250

3300

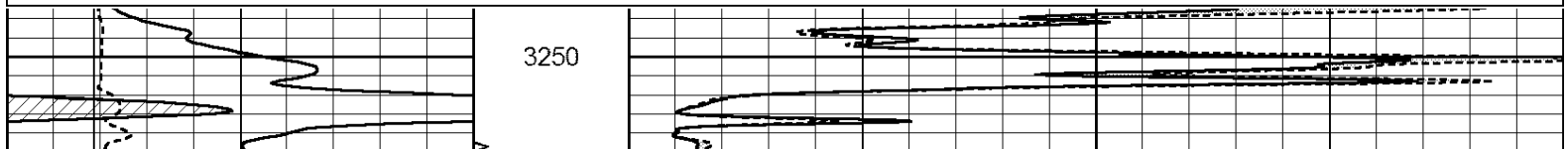


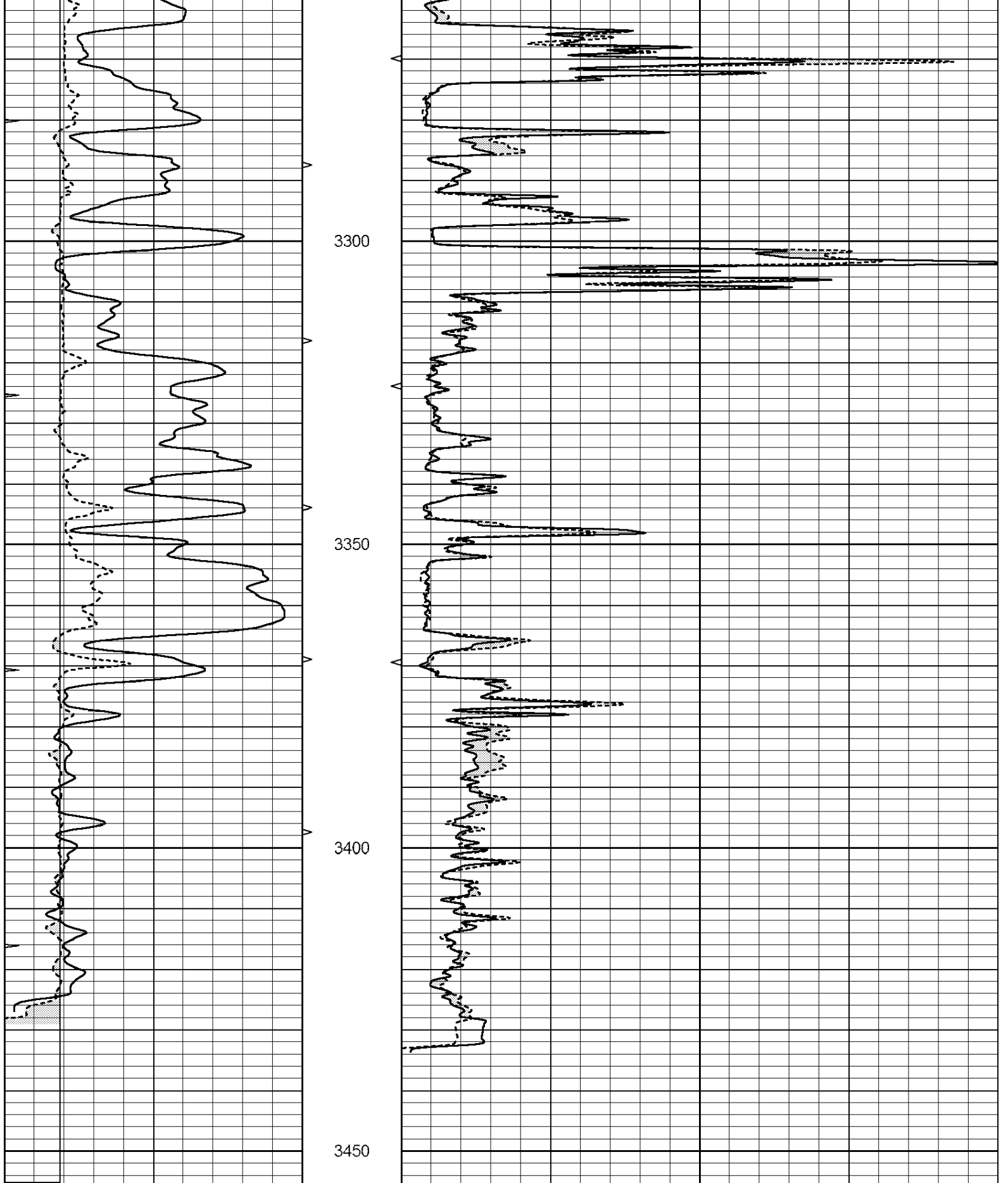


REPEAT SECTION

Database File: 4079pe.db
 Dataset Pathname: pass4.1
 Presentation Format: _micro
 Dataset Creation: Thu Aug 01 04:30:39 2019
 Charted by: Depth in Feet scaled 1:240

0	GAMMA RAY (GAPI)	150	ABHV	0	MEL1.5 (Ohm-m)	40
6	CALIPER (in)	16	10 (ft3)	0 0	MEL2.0 (Ohm-m)	40
0	MINMK	20	TBHV			
			0 (ft3)	10		





0	GAMMA RAY (GAPI)	150	ABHV	0	MEL1.5 (Ohm-m)	40
6	CALIPER (in)	16	10 (ft3)	0 0	MEL2.0 (Ohm-m)	40
0	MINMK	20	TBHV			
			0 (ft3)	10		

Calibration Report

Database File: 4079pe.db
 Dataset Pathname: pass4.1
 Dataset Creation: Thu Aug 01 04:30:39 2019

MICRO Calibration Report

Serial Number: MICRO3
 Tool Model: PROBE
 Performed: Sat Apr 06 08:28:00 2019

Caliper Calibration:	Gain=5.761	Offset=-21.702
	Low Cal	High Cal
References	7.000	14.000
Readings	5.339	6.500

1.5" Calibration:	Gain=84.606	Offset=0.620
	Low Cal	High Cal
References	0.000	20.000
Readings	0.001	0.230

2" Calibration:	Gain=118.028	Offset=-0.676
	Low Cal	High Cal
References	0.000	20.000
Readings	0.018	0.188

Gamma Ray Calibration Report

Serial Number: GR5
 Tool Model: OPEN
 Performed: Thu Jul 11 09:33:22 2019

Calibrator Value:	1.0	GAPI
Background Reading:	0.0	cps
Calibrator Reading:	1.0	cps
Sensitivity:	0.5400	GAPI/cps