



MIDWEST SURVEYS
 LOGGING - PERFORATING - CONSULTING SERVICES
 P.O. Box 68, Osawatomie, KS 68064
 913.735.2128

GAMMA RAY / NEUTRON / CCL

File No. _____

Company **N.C. Oil**

Well **Young No.-11**

Field **Humboldt / Chanute**

County **Neosho** State **Kansas**

Location **1320' FNL & 3832' FEL**

Other Services **Perforate**

Sec. **2** Twp. **27S** Rge. **18E**

Permament Datum **GL** Elevation **998'**

Log Measured From **GL** K.B. NA

Drilling Measured From **GL** D.F. NA

Date **07-16-2019** G.L. **998'**

Run Number **One**

Depth Driller **890.0**

Bottom Logged Interval **880.0**

Top Log Interval **20.0**

Fluid Level **Full**

Type Fluid **Water**

Density / Viscosity **NA**

Salinity - PPM Cl **NA**

Max Recorded Temp **NA**

Estimated Cement Top **0.0**

Equipment No. **102** Location **Osawatomie**

Recorded By **Gary Windisch**

Witnessed By **David Wrestler**

BORE-HOLE RECORD

NO. **BIT** FROM **TO** SIZE **WGT** FROM **TO**

One **9.875"** 0.0 **21.0** **7.00"** 17.0# **0.0**

Two **6.75"** 21.0 **900.0** **2.875"** 6.5# **0.0**

CASING RECORD

TO **21.0**

FROM **0.0**

TO **21.0**

FROM **0.0**

TO **21.0**

FROM **0.0**

TO **21.0**

FROM **0.0**

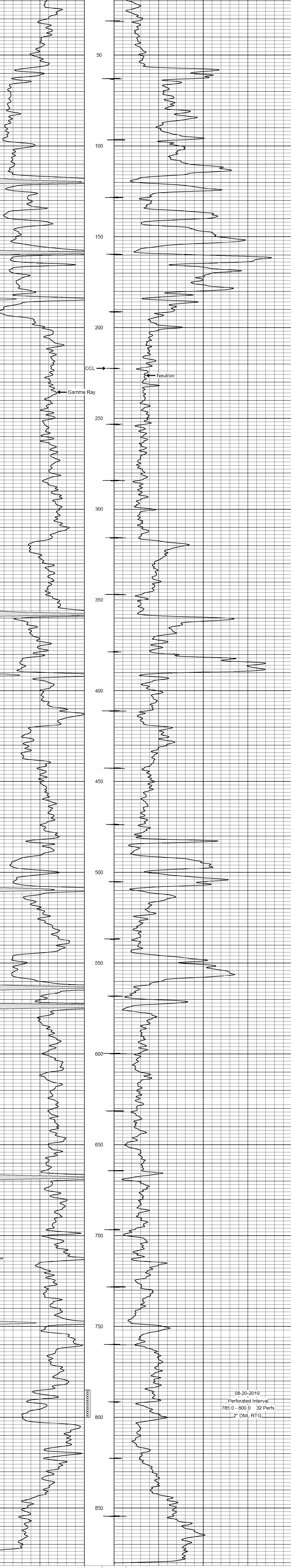
<<< Fold Here >>>

All interpretations are opinions based on inferences from electrical or other measurements and we cannot and do not guarantee the accuracy or correctness of any interpretation, and we shall not, except in the case of gross or willful negligence on our part, be liable or responsible for any loss, costs, damages, or expenses incurred or sustained by anyone resulting from any interpretation made by any of our officers, agents or employees. These interpretations are also subject to our general terms and conditions set out in our current Price Schedule.

Comments

Drilling Contractor :
David Wrestler

Database File: young 11.db
 Dataset Pathname: pass1
 Presentation Format: gr-n-ccl
 Dataset Creation: Tue Jul 16 08:56:28 2019 by Log SCH 111116
 Charted by: Depth in Feet scaled 1:240



08-20-2019
 Perforated Interval
 785.0 - 800.0 32 Perfs
 2" DML RTG

0 Gamma Ray (cps) 150
 150 Gamma Ray (cps) 300
 -1 CCL 1
 100 Neutron (cps) 1900