



**BOREHOLE COMPENSATED
SONIC LOG**

Company MURFIN DRILLING CO., INC.
Well GEYER #6-35
Field WILDCAT
County GRAHAM
State KANSAS

Company MURFIN DRILLING CO., INC.
Well GEYER #6-35
Field WILDCAT
County GRAHAM State KANSAS

Location: API #: 15-065-24172-00-00
330' FSL & 475' FWL
SEC 35 TWP 10S RGE 24W
Permanent Datum GROUND LEVEL Elevation 2351'
Log Measured From KELLY BUSHING
Drilling Measured From KELLY BUSHING
Other Services
CNL/CDL
DIL/MEL
Elevation
K.B. 2356'
D.F. N/A
G.L. 2351'

Date	9/24/2019						
Run Number	TWO						
Type Log	BHCS						
Depth Driller	4000'						
Depth Logger	4002'						
Bottom Logged Interval	3990'						
Top Logged Interval	200'						
Type Fluid In Hole	CHEMICAL						
Salinity, PPM CL	1500						
Density	9.2						
Level	FULL						
Max. Rec. Temp. F	116						
Operating Rig Time	5 HOURS						
Equipment -- Location	P-24 HAYS						
Recorded By	IAN MABB						
Witnessed By	SAMAN SHARIFAIE						
Borehole Record							
Run No.	Bit	From	To	Size	Wgt.	Casing Record	
ONE	12.25"	0'	260'	8.625"	23#	From	To
TWO	7.875"	260'	TD			0'	260'

<<< Fold Here >>>

All interpretations are opinions based on inferences from electrical or other measurements and Pioneer Wireline Services, LLC cannot and does not guarantee the accuracy or correctness of any interpretation, and Pioneer Wireline Services, LLC will not be liable or responsible for any loss, costs, damages, or expenses incurred or sustained by anyone resulting from any interpretation made by any of our officers, agents or employees.

Comments

N/A DENOTES NOT AVAILABLE OR NON-APPLICABLE.
WAKEENEY, KS.
6 MILES NORTH TO RD B, 5 MILES WEST TO RD 210,
1 MILE NORTH TO RD A , 2/3 MILE WEST & NORTH INTO

Log Measured From: KELLY BUSHING 5 Ft. Above Permanent Datum

THANK YOU FOR USING PIONEER ENERGY SERVICES
www.pioneerenergy.com 785-625-3858

Your Pioneer Energy Services Crew	This Log Record Was Witnessed By
Engineer: IAN MABB	Primary Witness: SAMAN SHARIFAIE
Operator:	Secondary Witness:
Operator:	Secondary Witness:
Operator:	Secondary Witness:

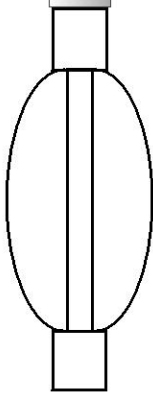
Log Variables

DatabaseC:\ProgramData\Warrior\Data\murfin_geyer_6_35.db
 Dataset field/well/MELSON/pass1/_vars_

Top - Bottom

A 1	BOREID in 7.875	BOTTEMP degF 116	CASEOD in 5.5	CASETHCK in 0	COMPACT 1	FLUIDDEN g/cc 1	M 2
MATRXDEN g/cc 2.71	NPORSEL Limestone	PERFS 0	SNDERR mmho/m 4	SNDERRM mmho/m 5	SPSHIFT mV 0	SRFTEMP degF 0	SVFLUID usec/ft 189
SVMATRIX usec/ft 47.6	SZCOR Off	TDEPTH ft 4002					

Sensor	Offset (ft)	Schematic	Description	Length (ft)	O.D. (in)	Weight (lb)
MCAL MI MN	22.50 22.50 22.50		ML-Armadillo (ARM001) Pengo Mandrel & Armadillo ML Electronics (2014)	5.50	3.50	100.00
WVF4 WVF1	13.50 13.50		SLT-PENGO (0001)	16.00	3.50	300.00
WVF3 WVF2	11.50 11.50					



CENT-PENGO (3-PENGO)

5.50

3.00

70.00

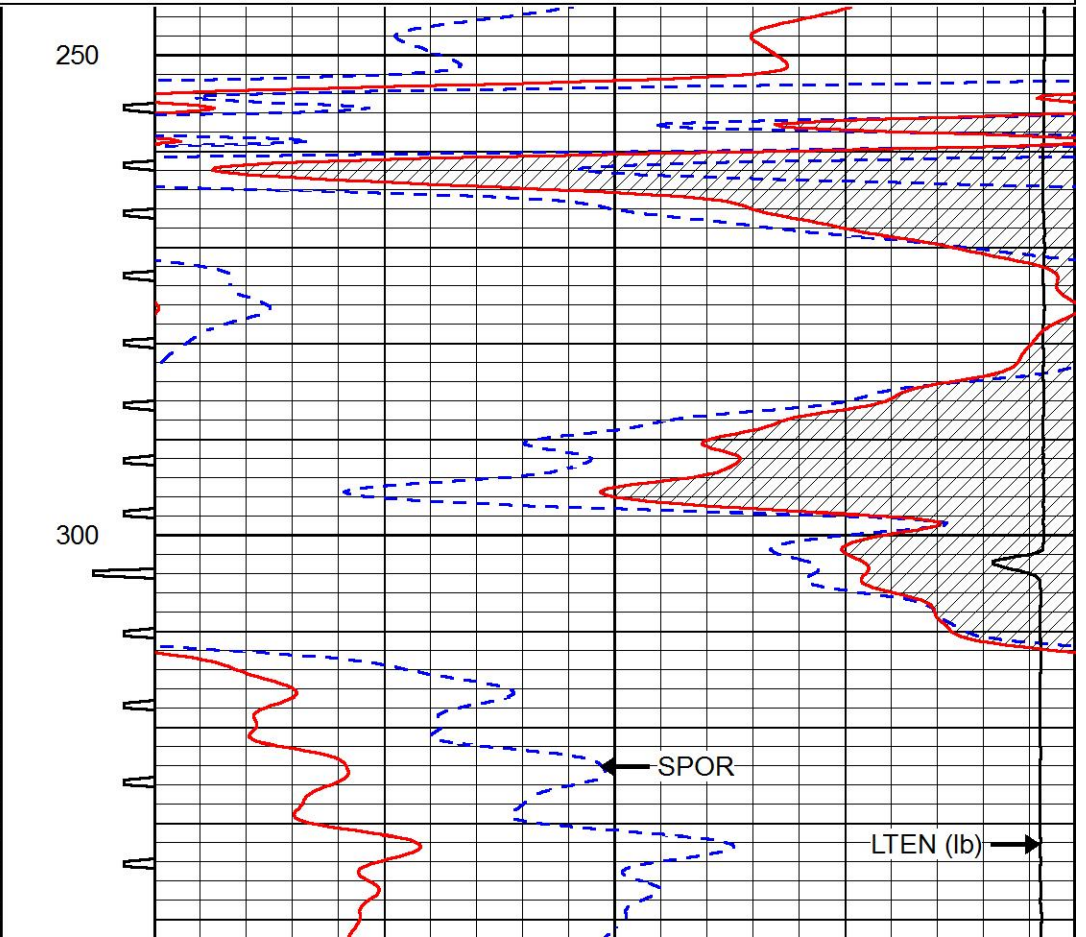
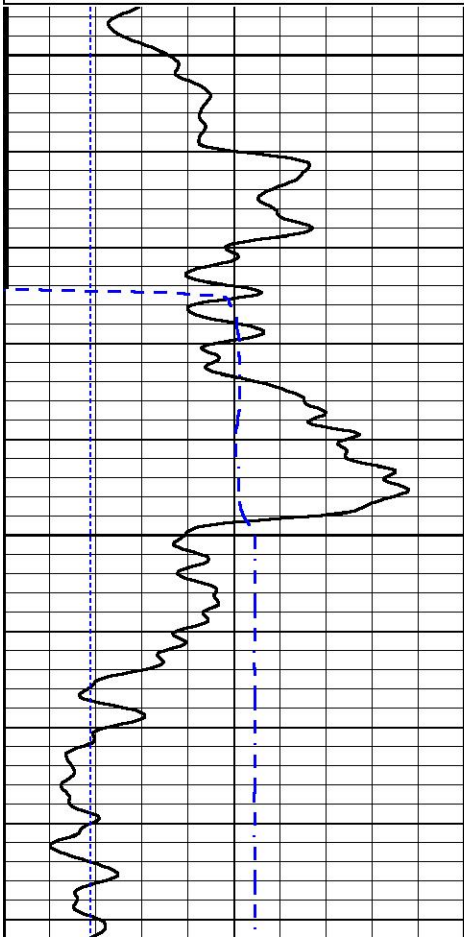
Dataset: murfin_geyer_6_35.db: field/well/MELSON/pass1
 Total length: 27.00 ft
 Total weight: 470.00 lb
 O.D.: 3.50 in

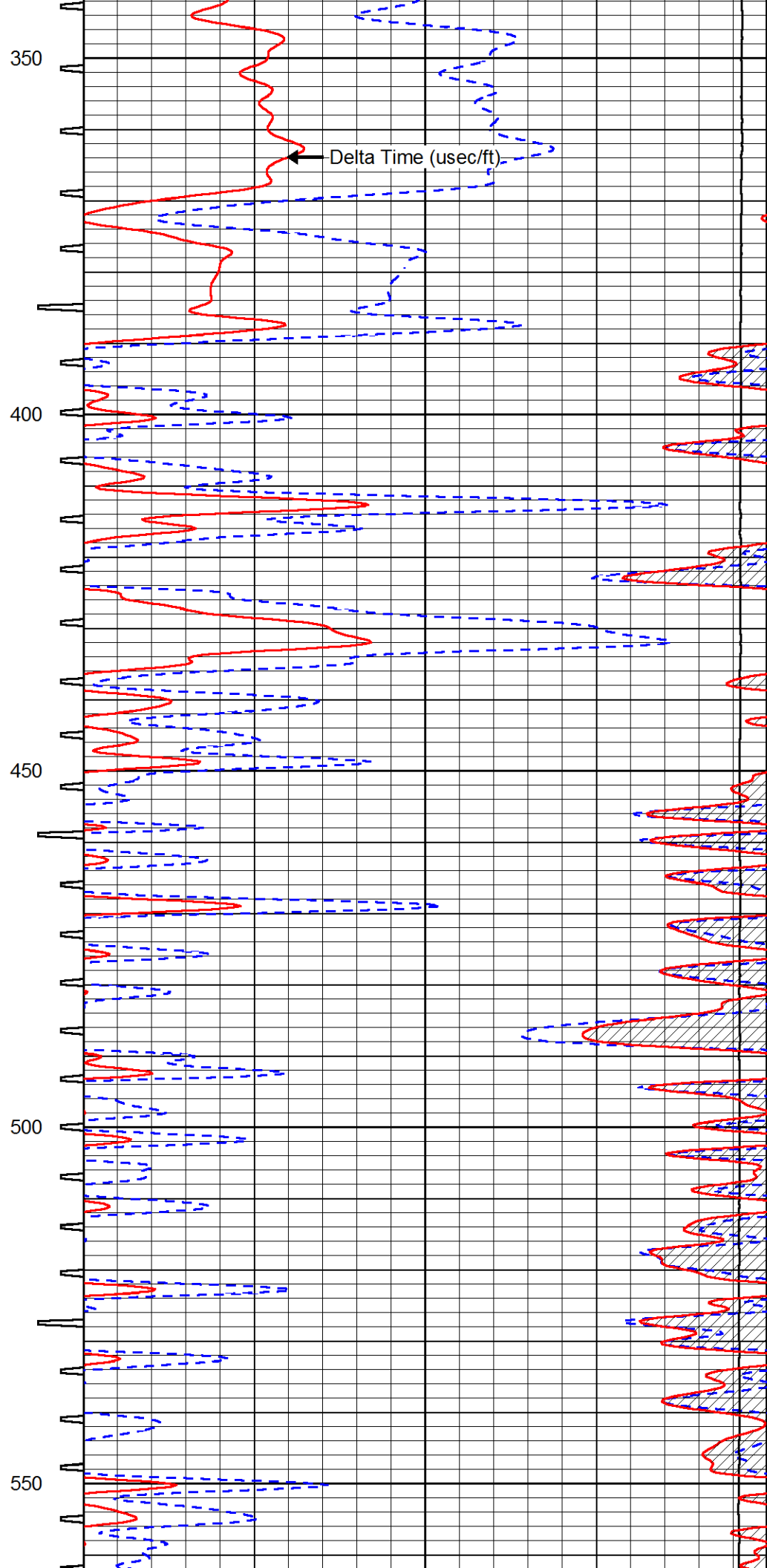
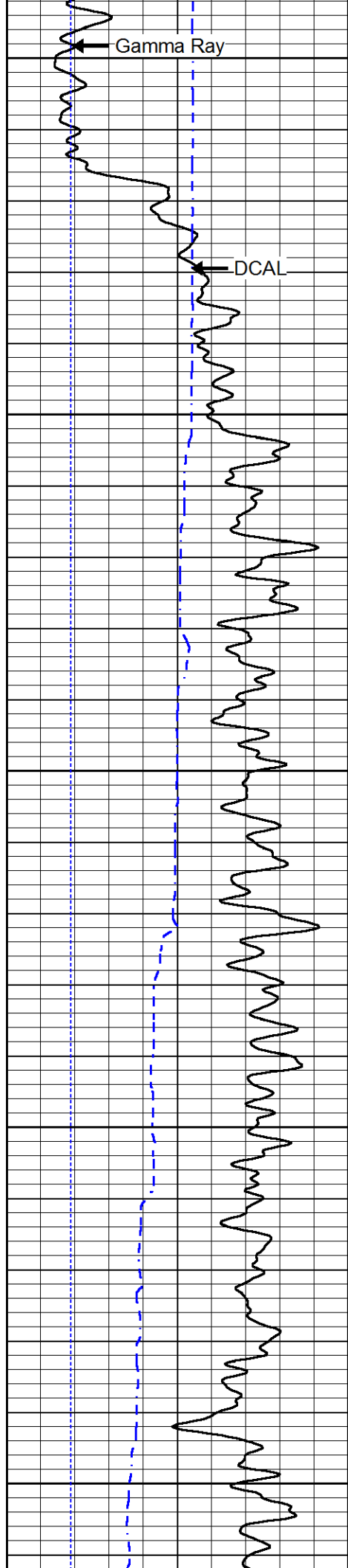


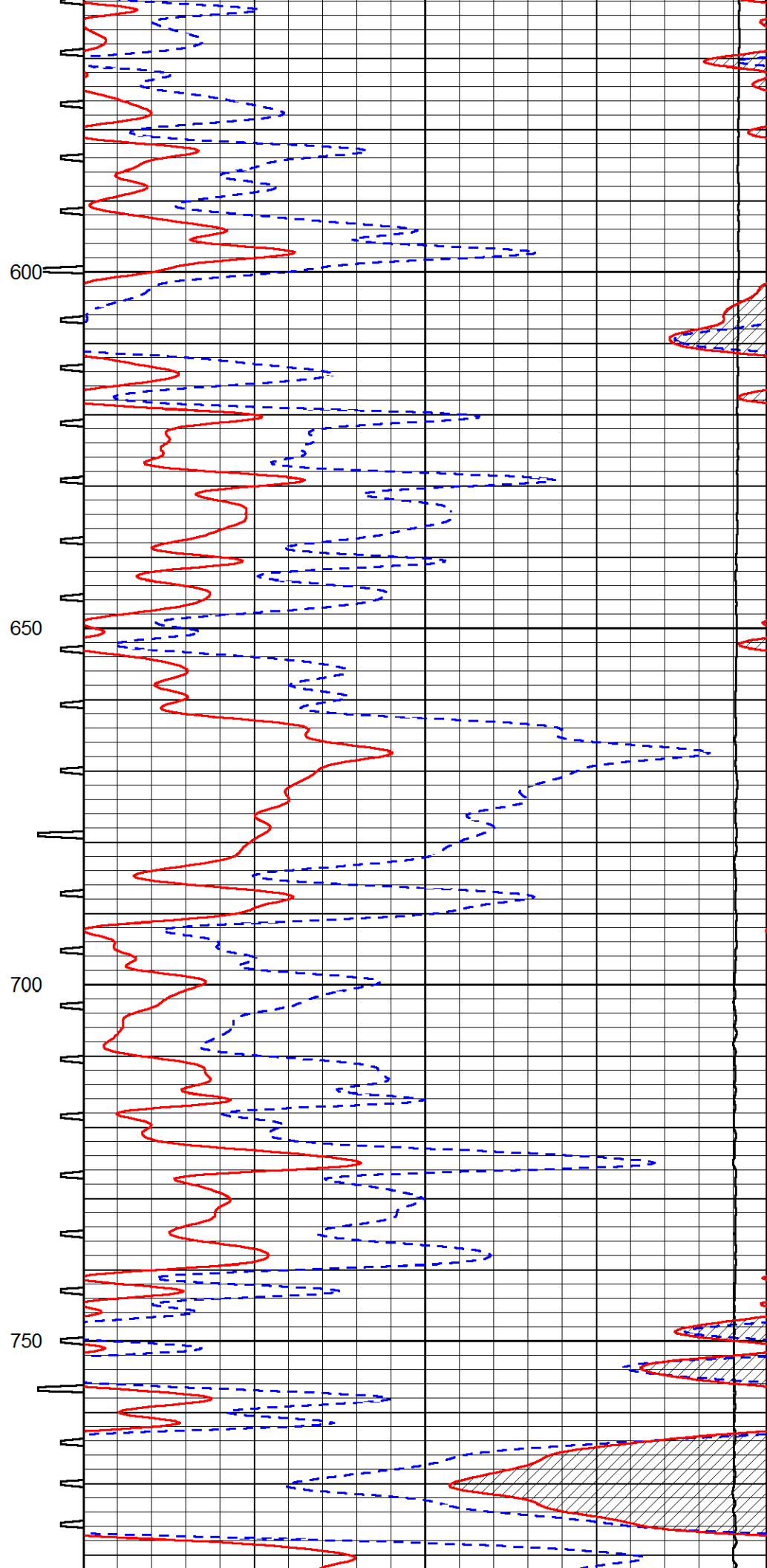
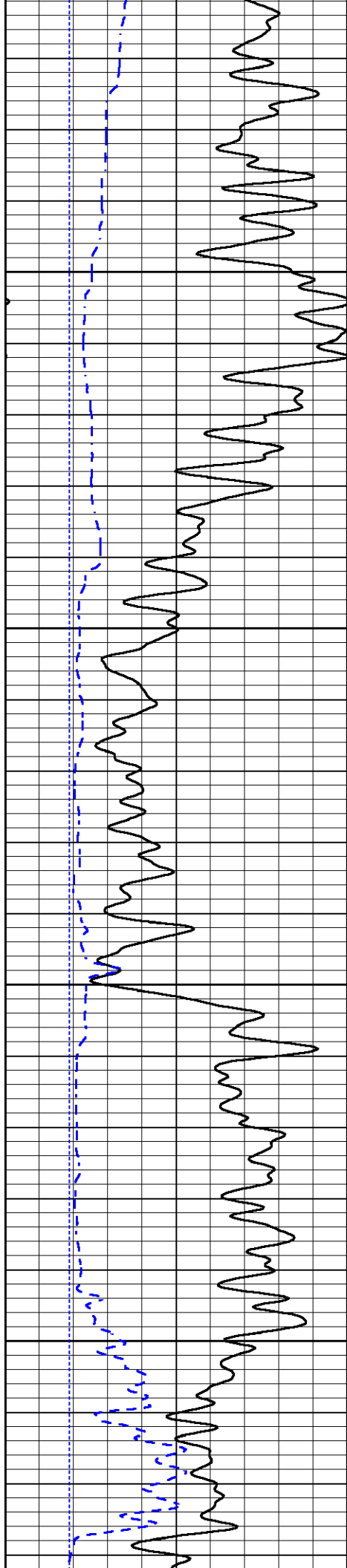
MAIN PASS

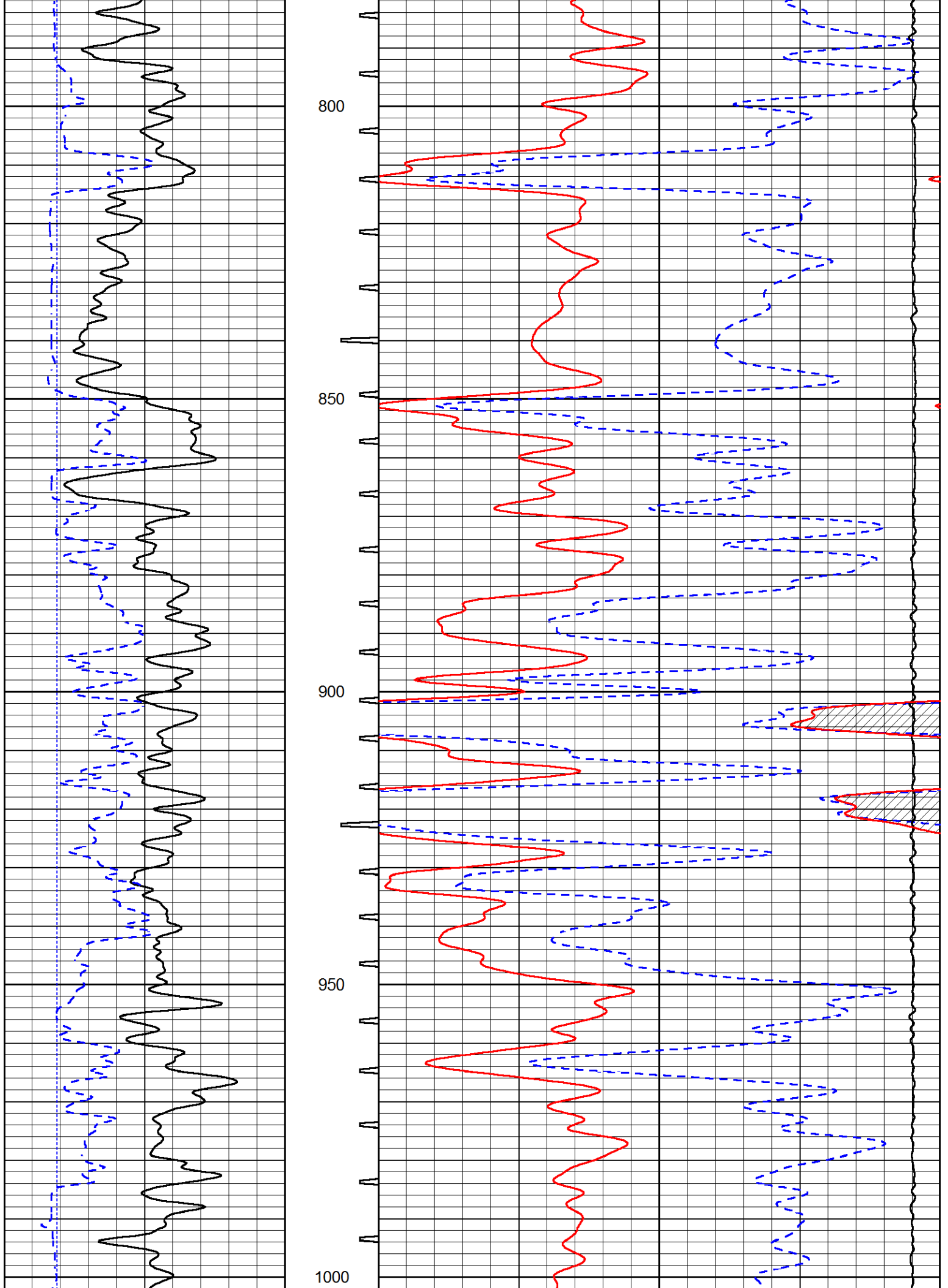
Database File: murfin_geyer_6_35.db
 Dataset Pathname: stackmel/pass4.1
 Presentation Format: _sonic
 Dataset Creation: Tue Sep 24 08:14:32 2019
 Charted by: Depth in Feet scaled 1:240

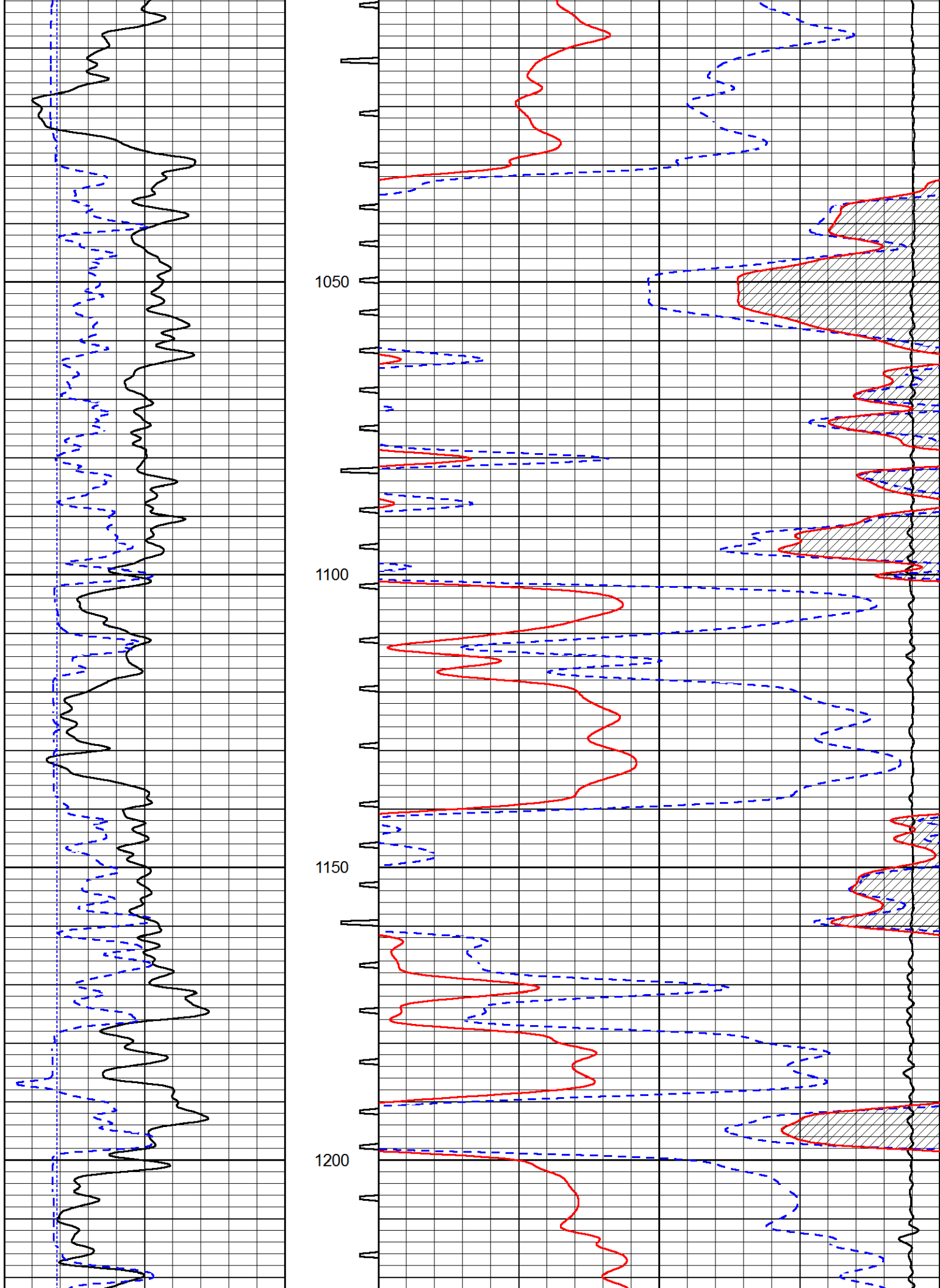
0	Gamma Ray (GAPI)	150	Sonic Int	140	Delta Time (usec/ft) (usec/ft)	40
150	GR (GAPI)	300	5 (msec) 0	30	Sonic Porosity (pu)	-10
6	DCAL (in)	16		15000	LTEN (lb) (lb)	0

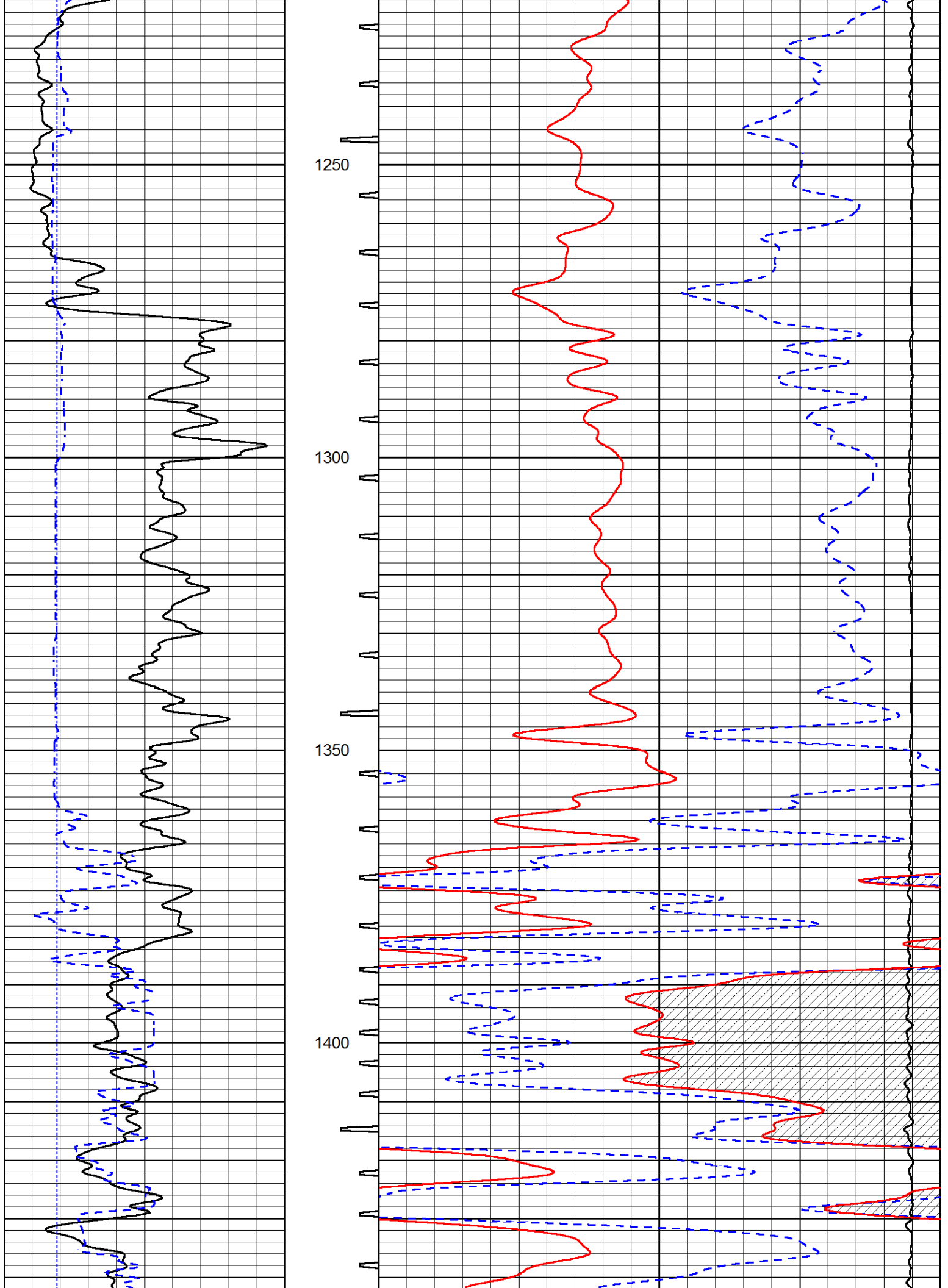


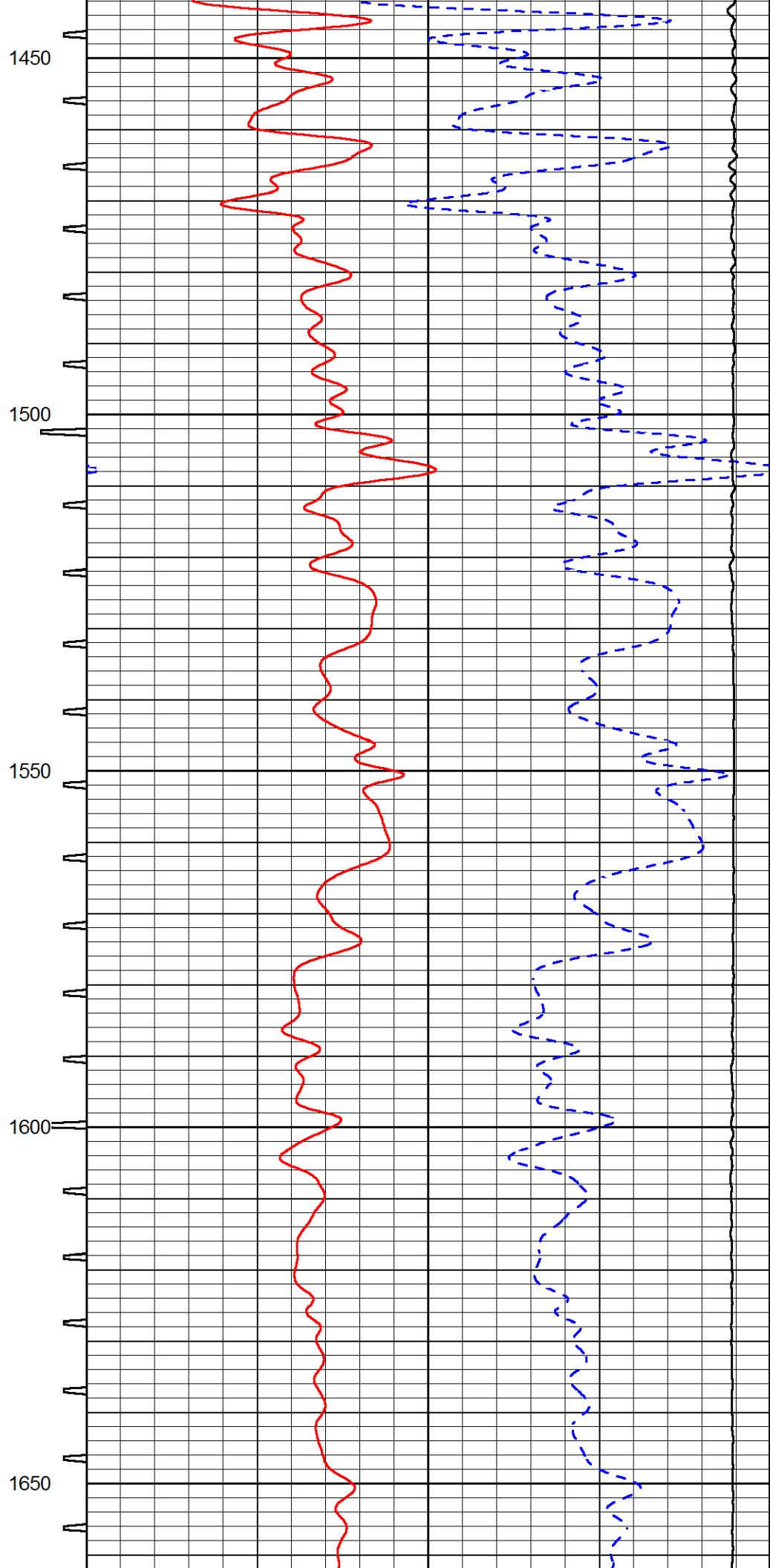
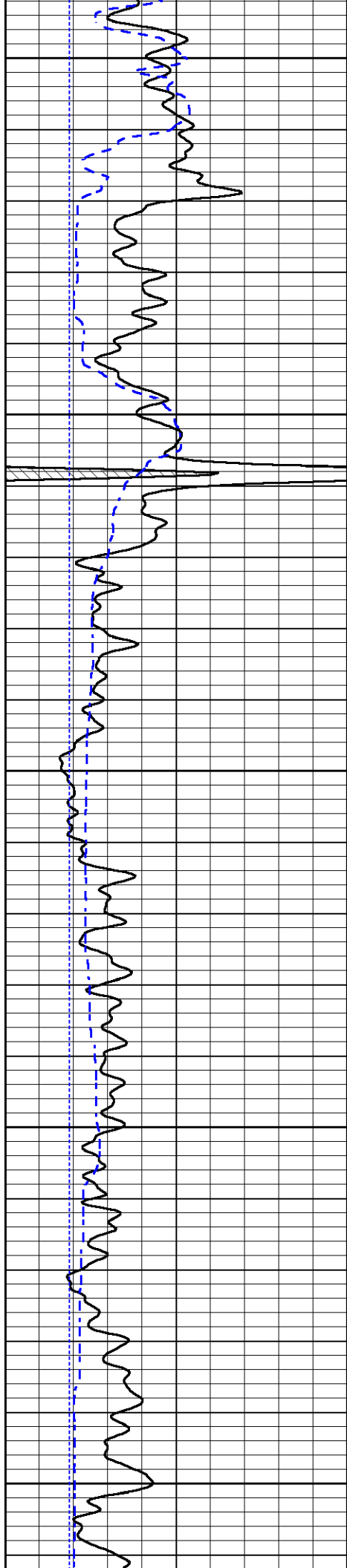


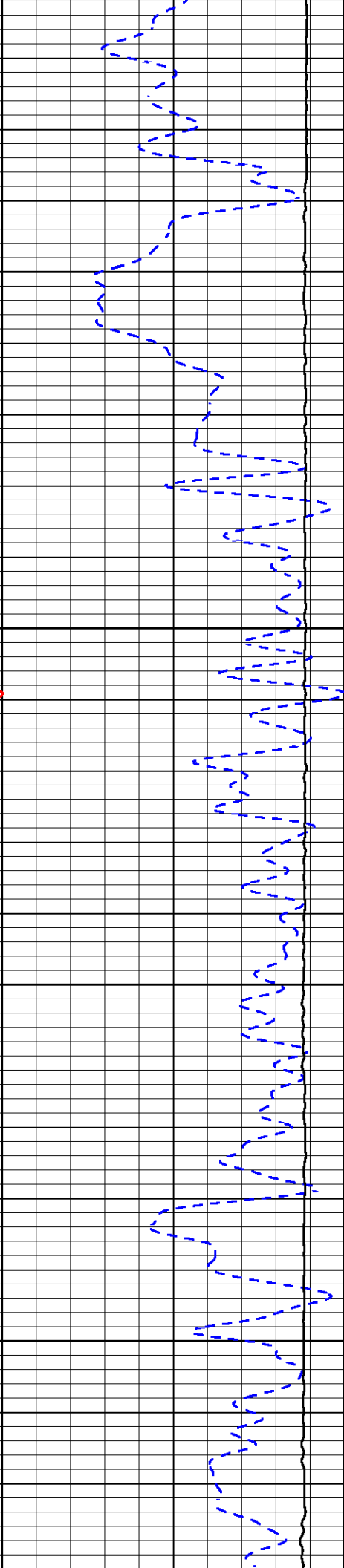
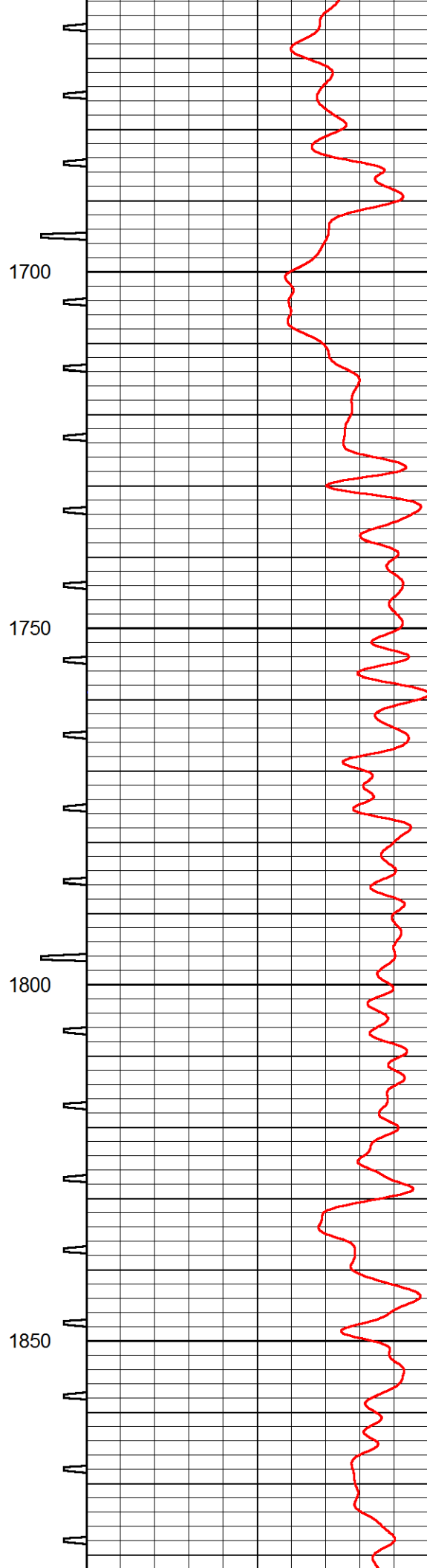
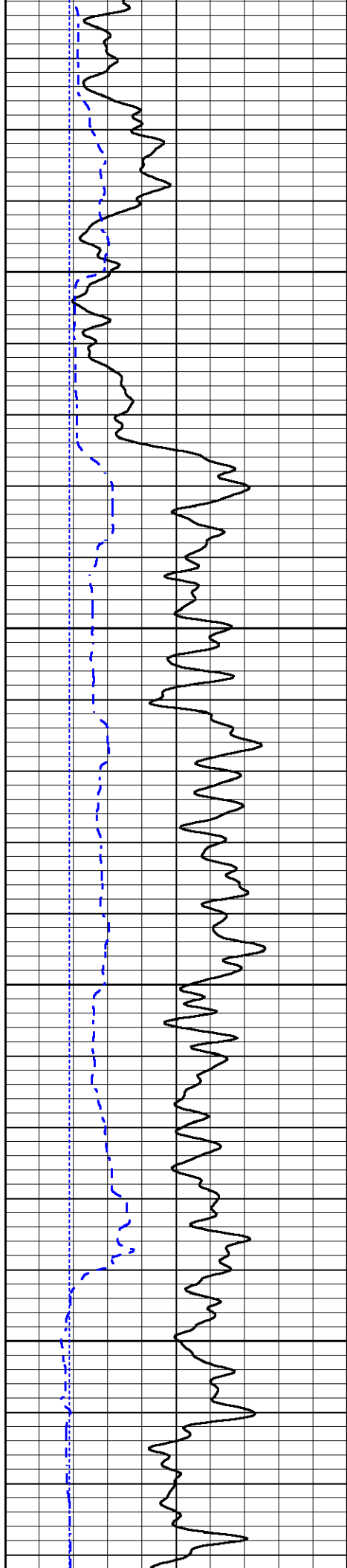


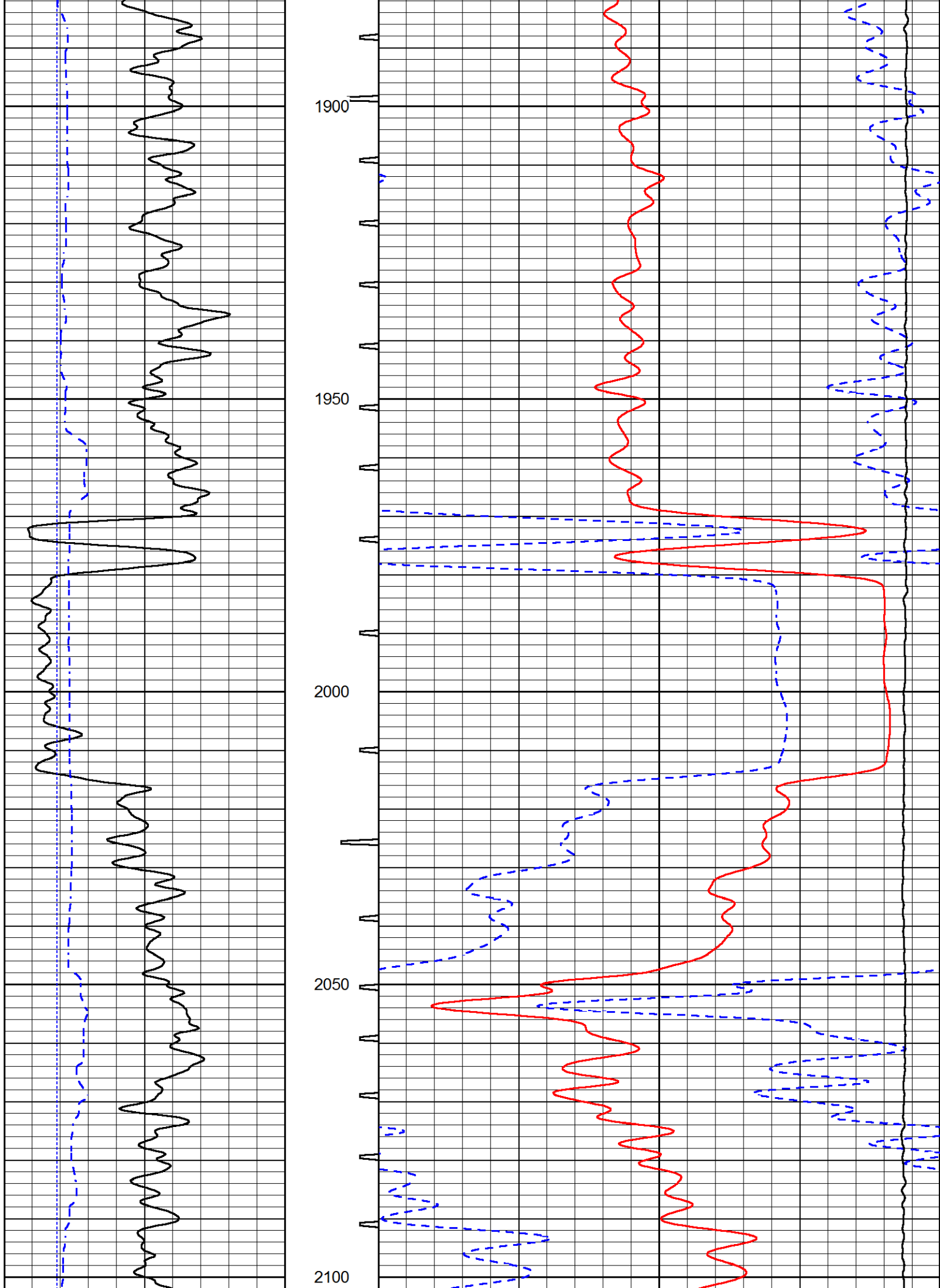


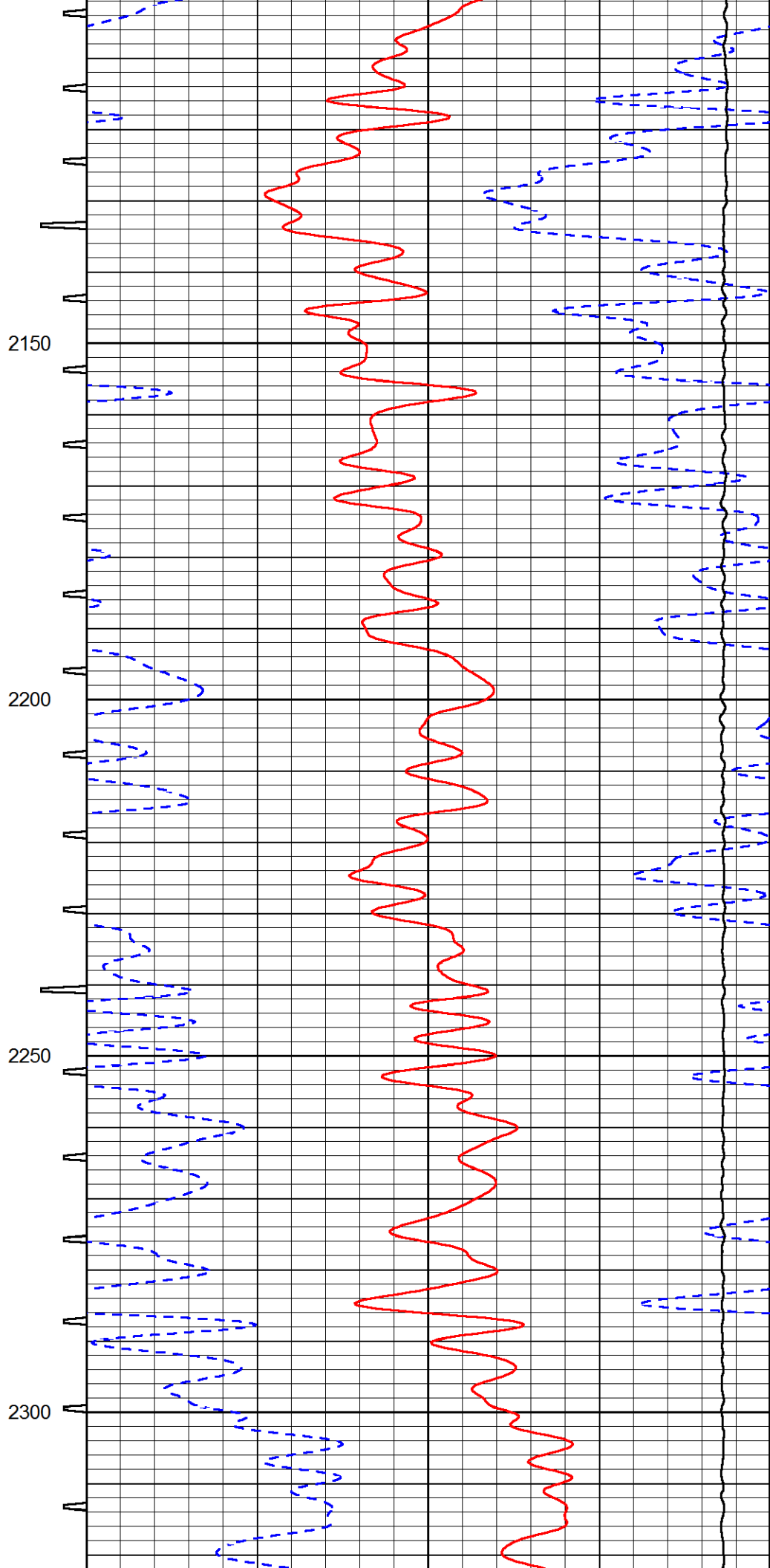
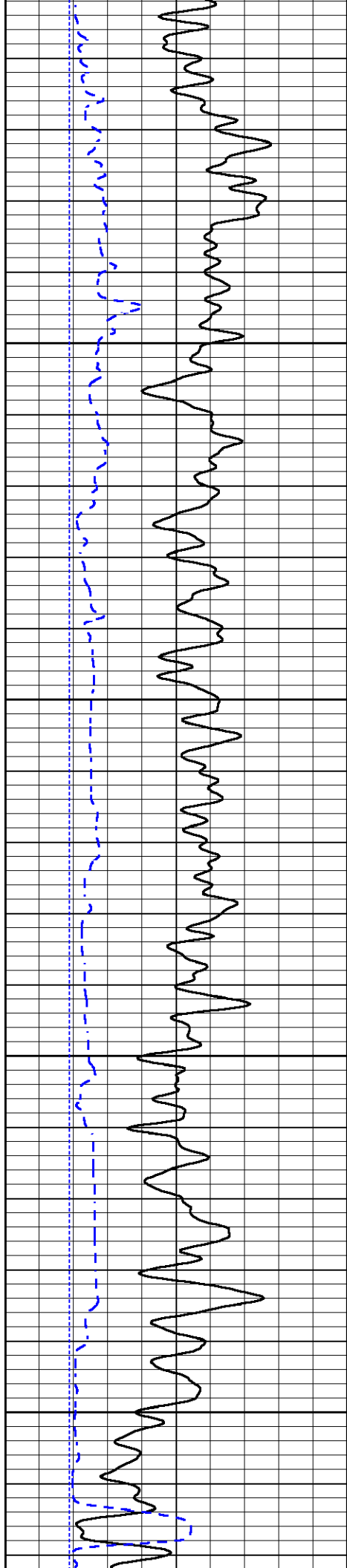


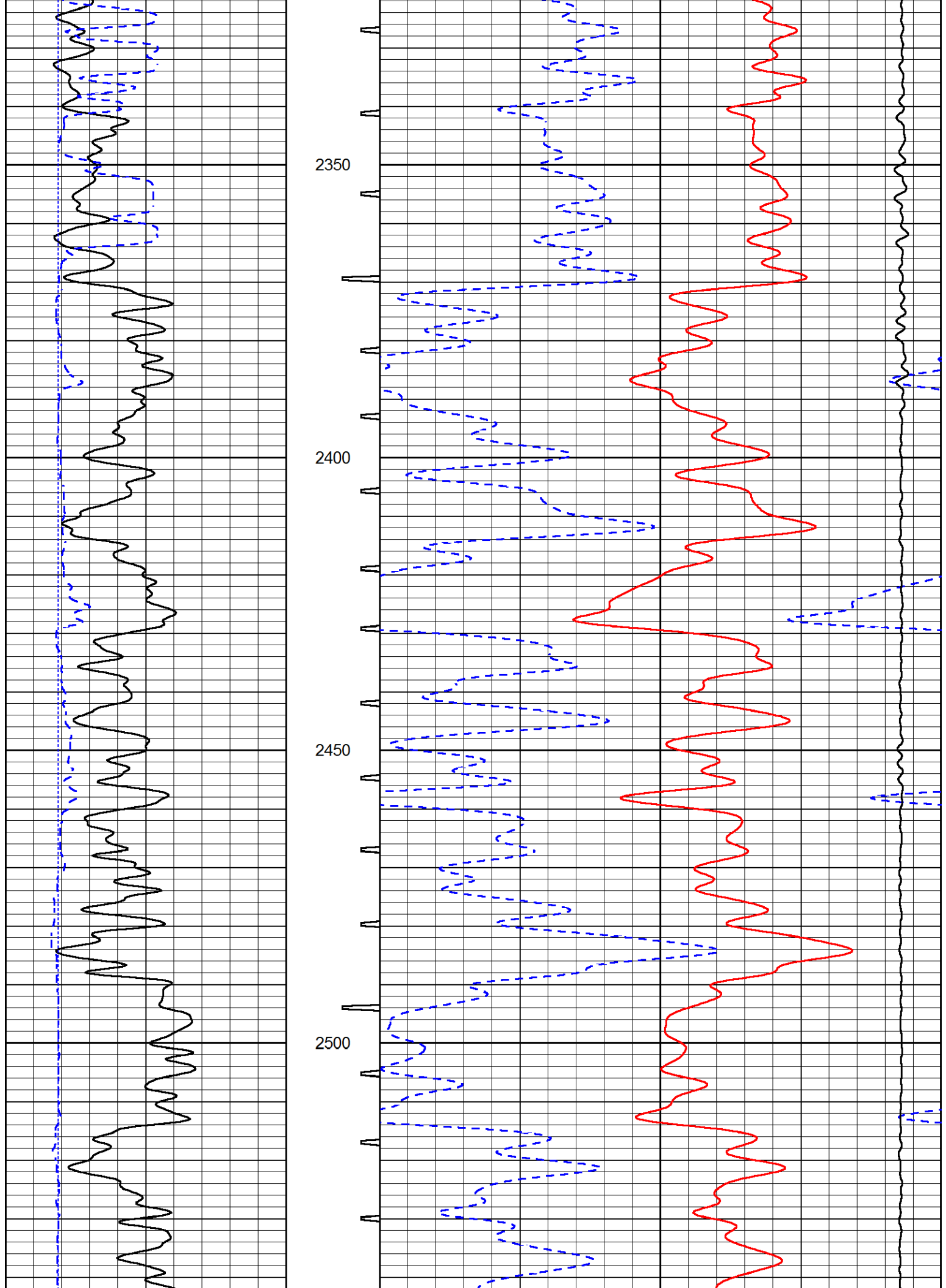


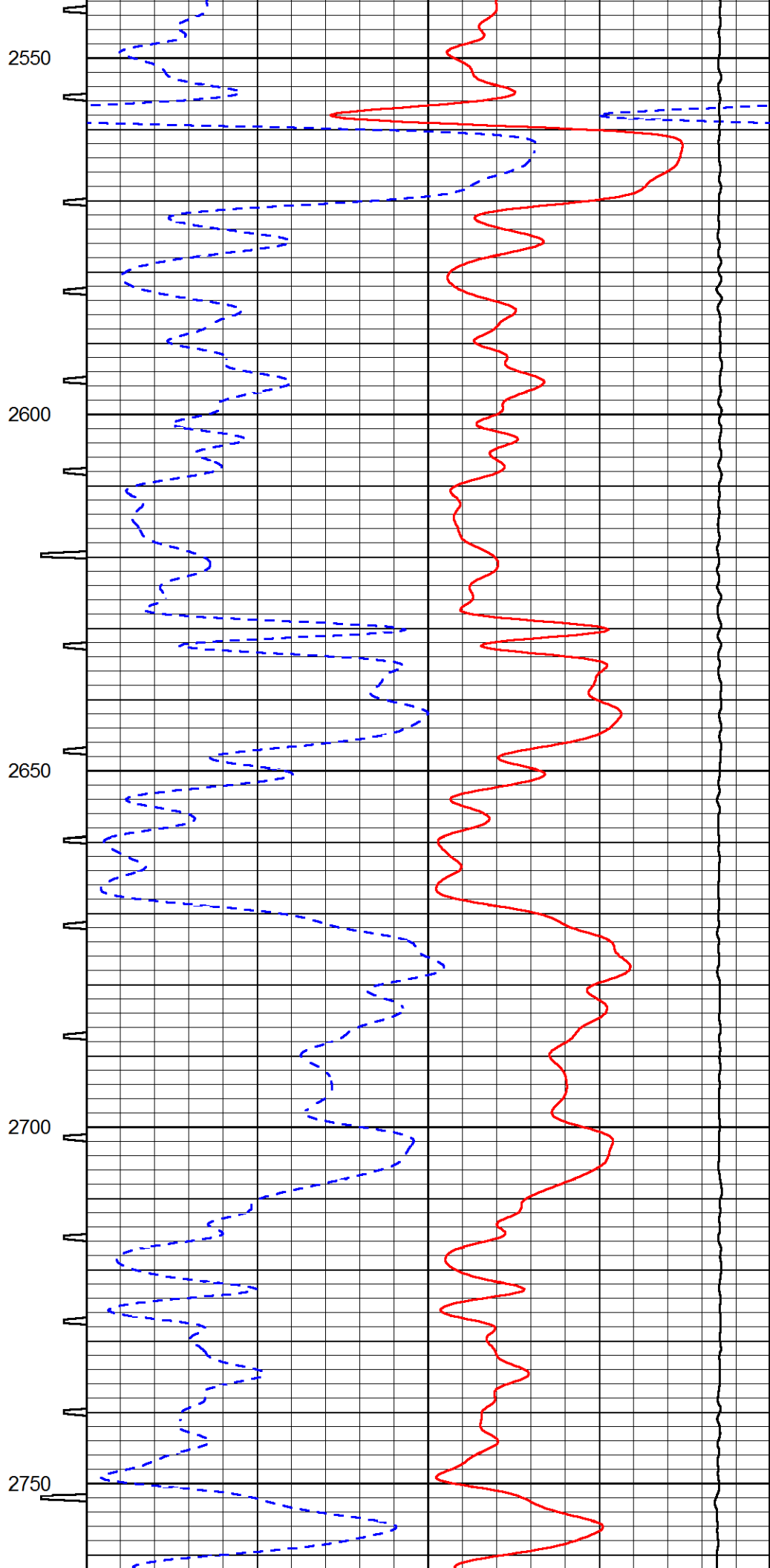
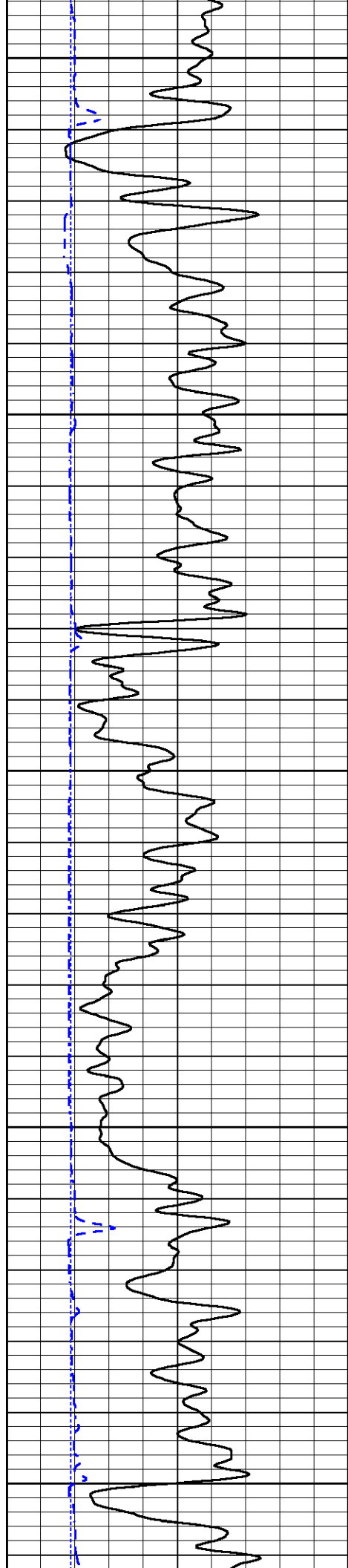


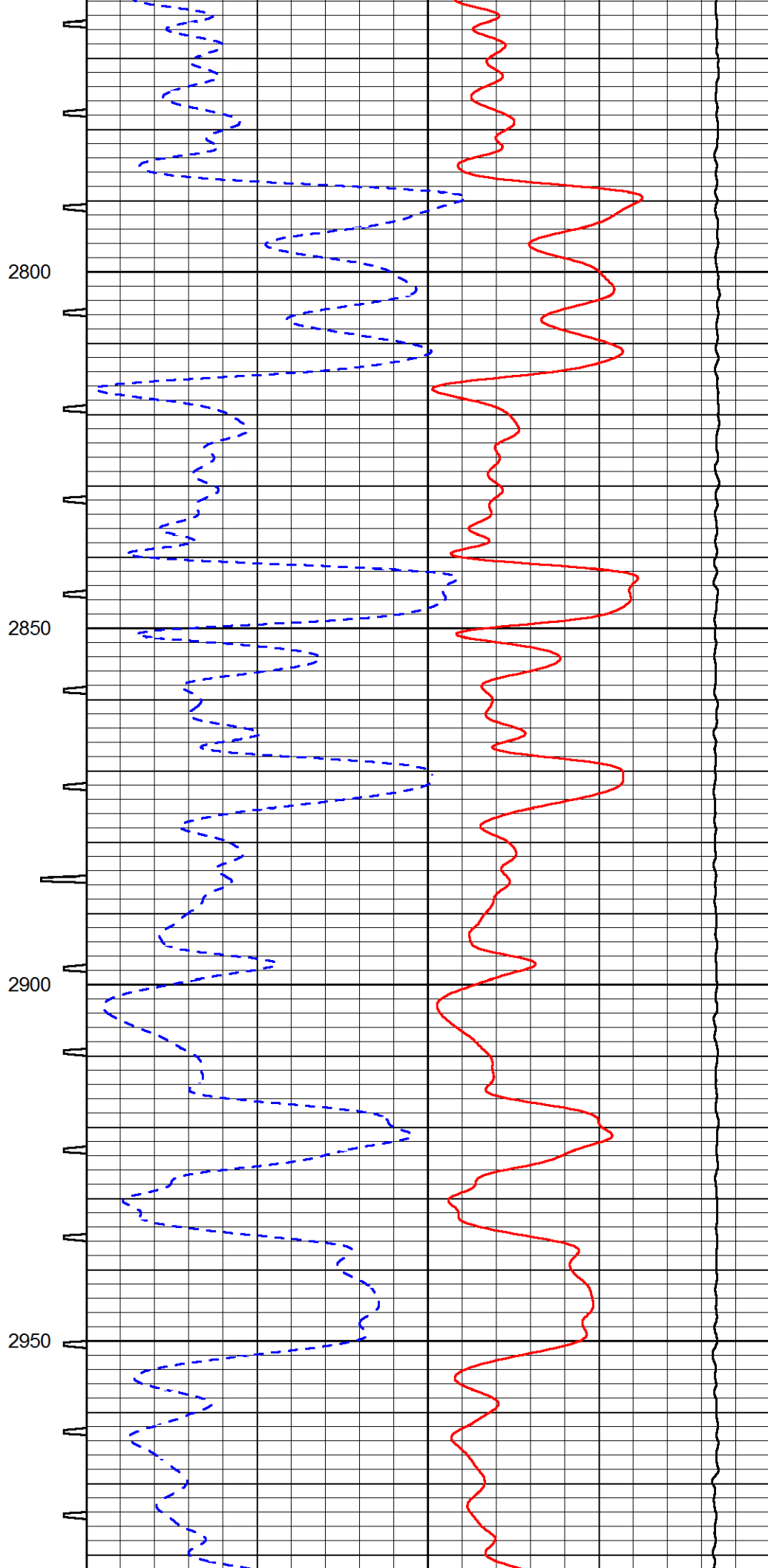
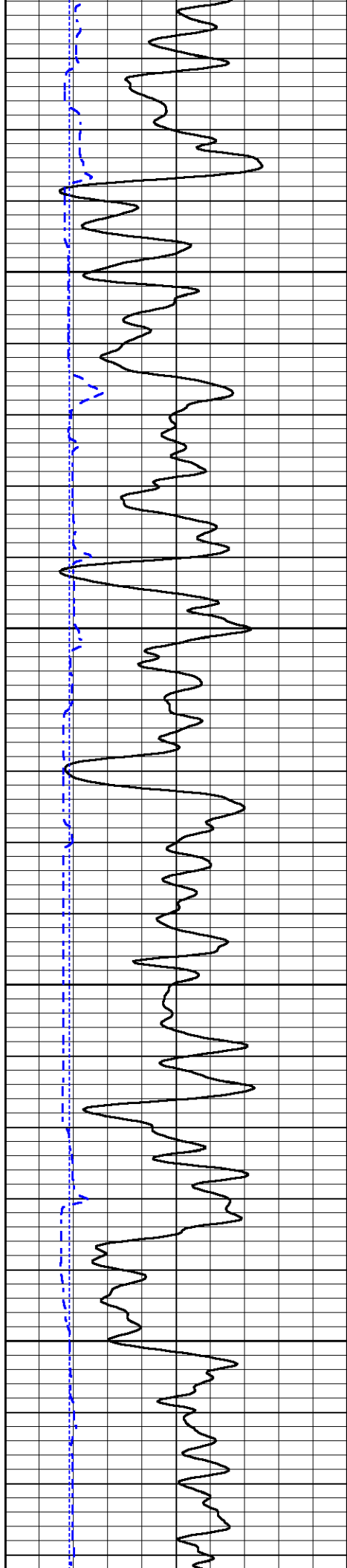


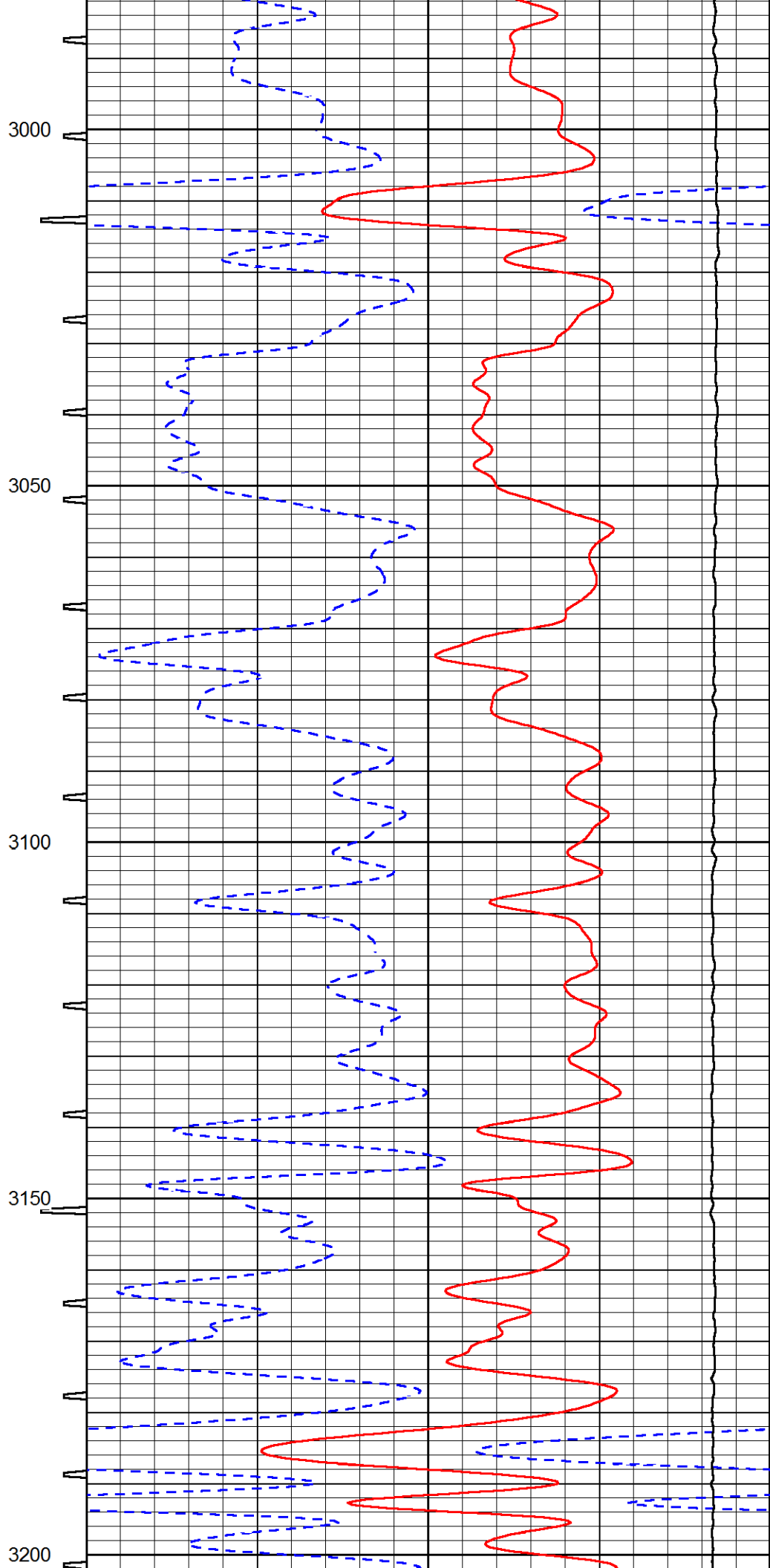
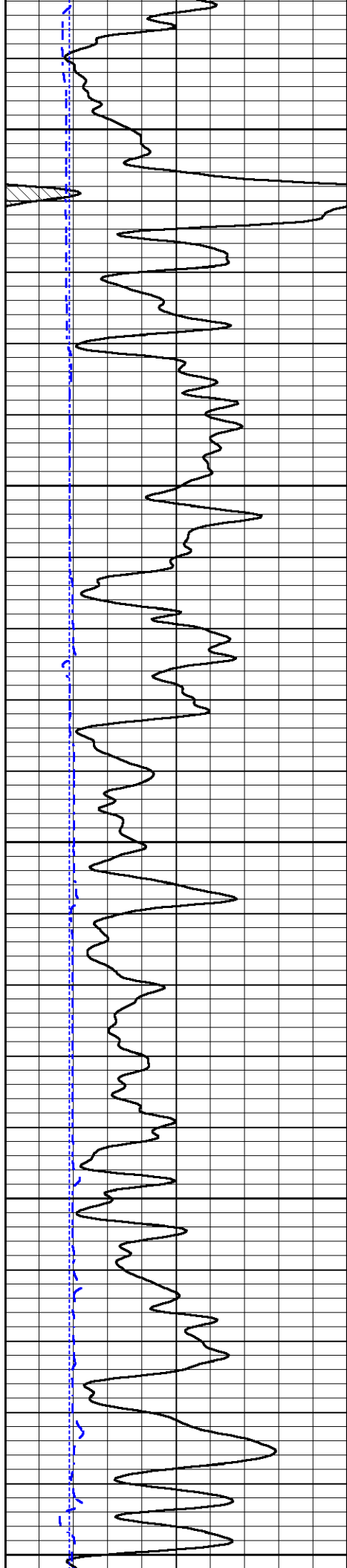


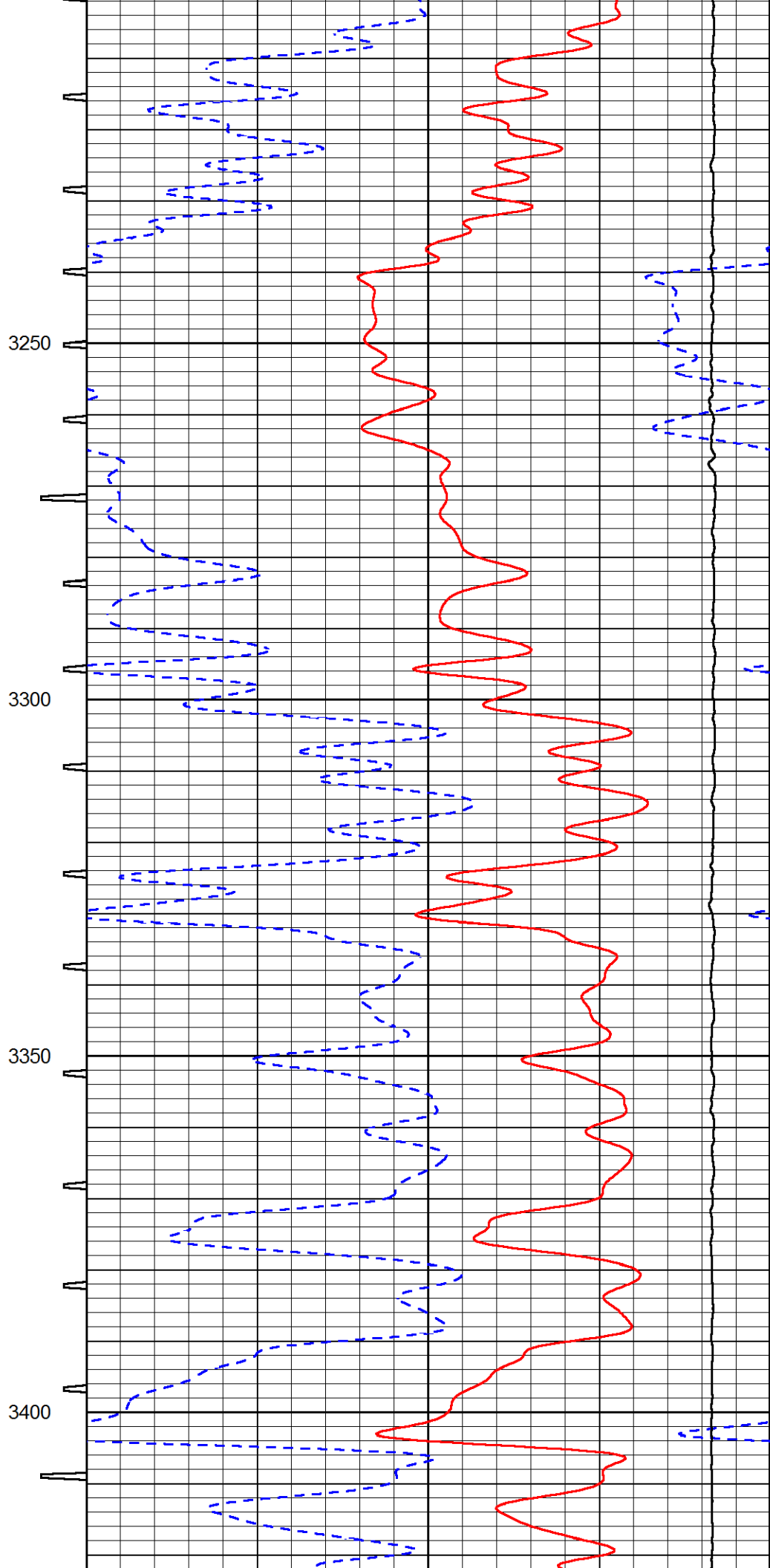
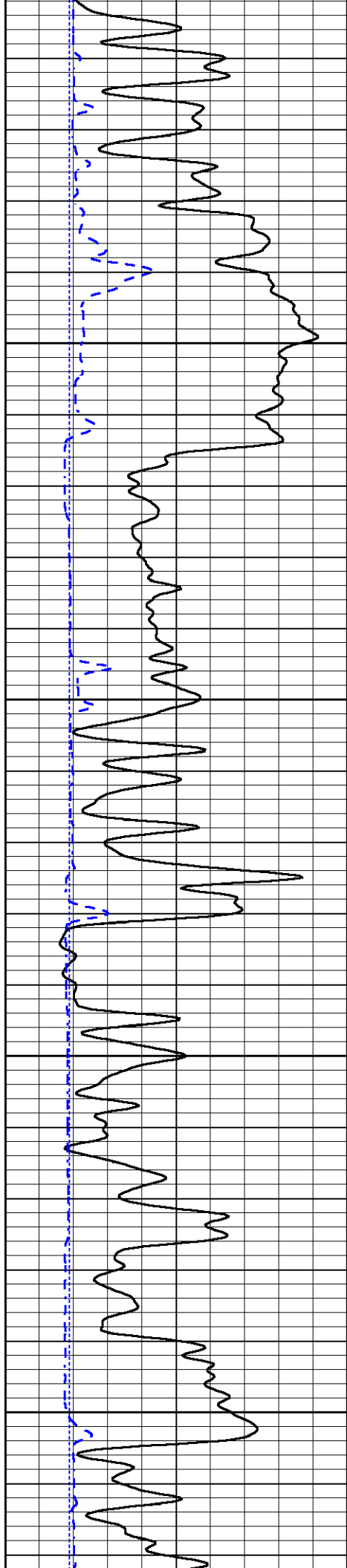


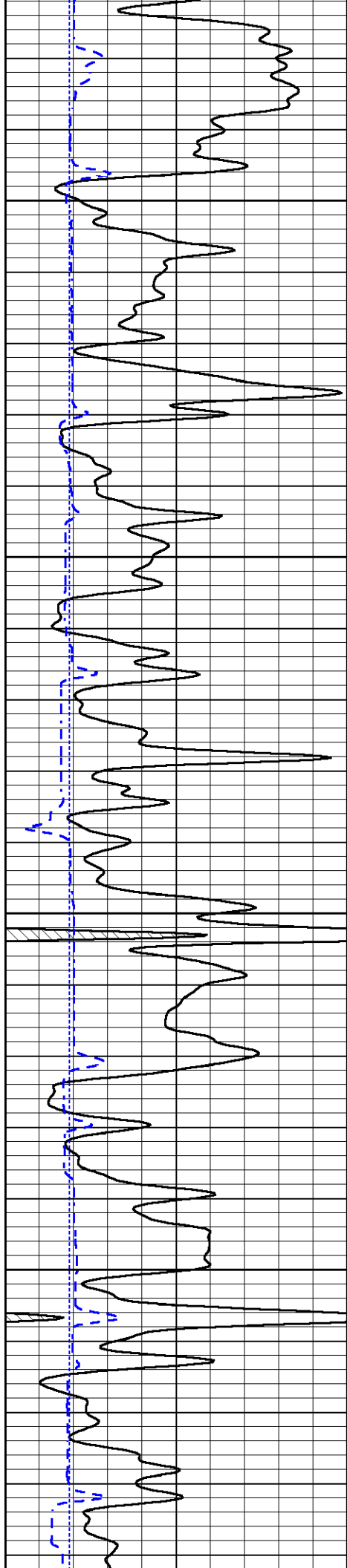










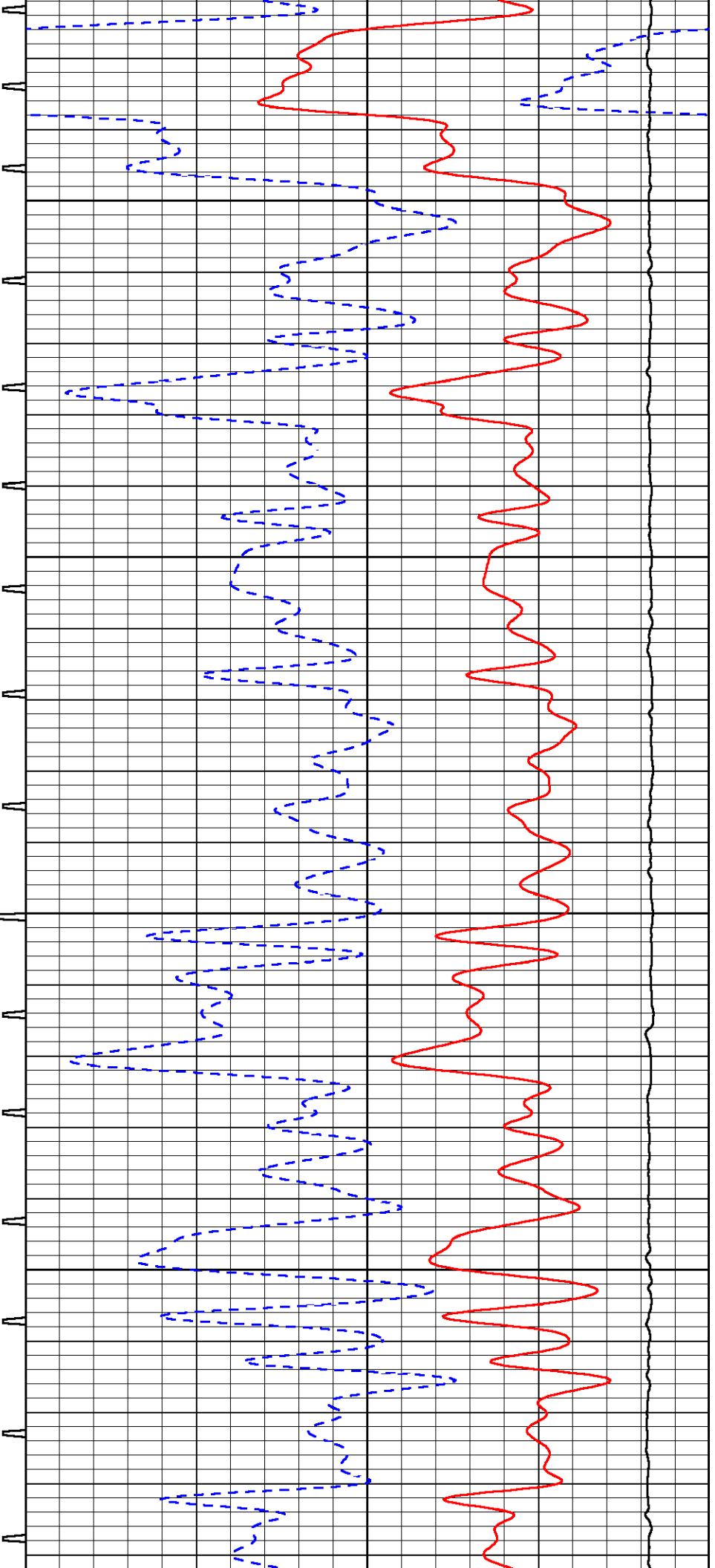


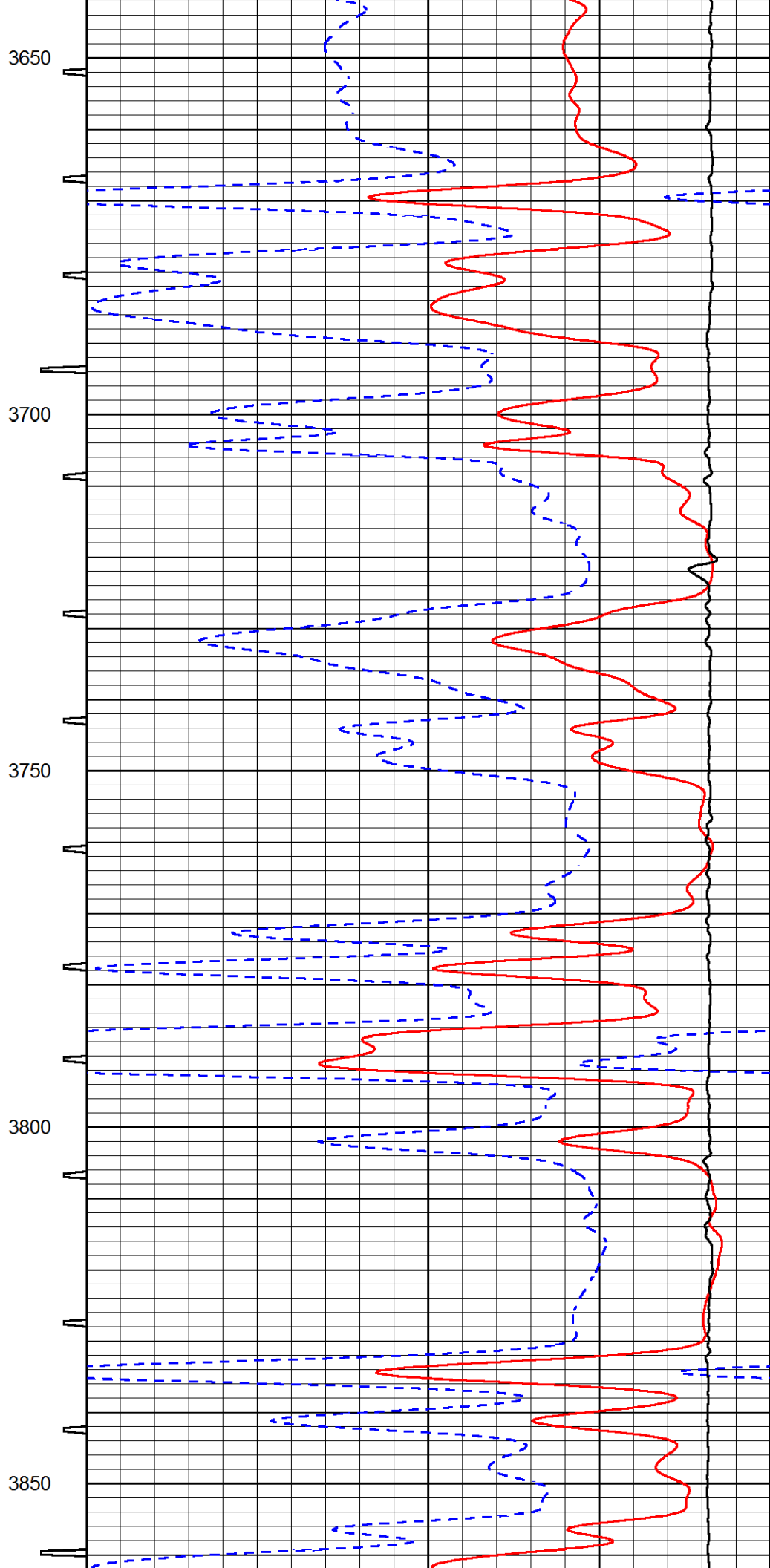
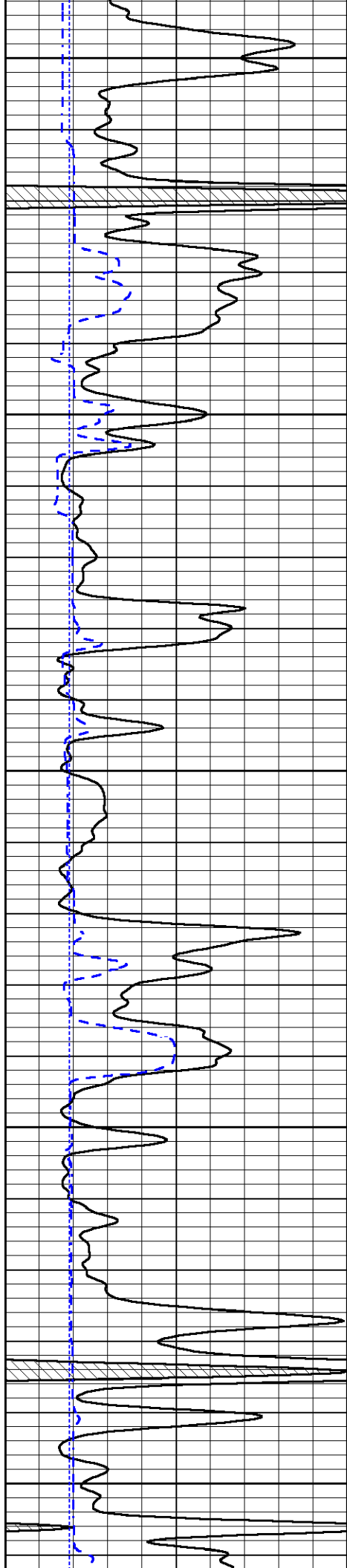
3450

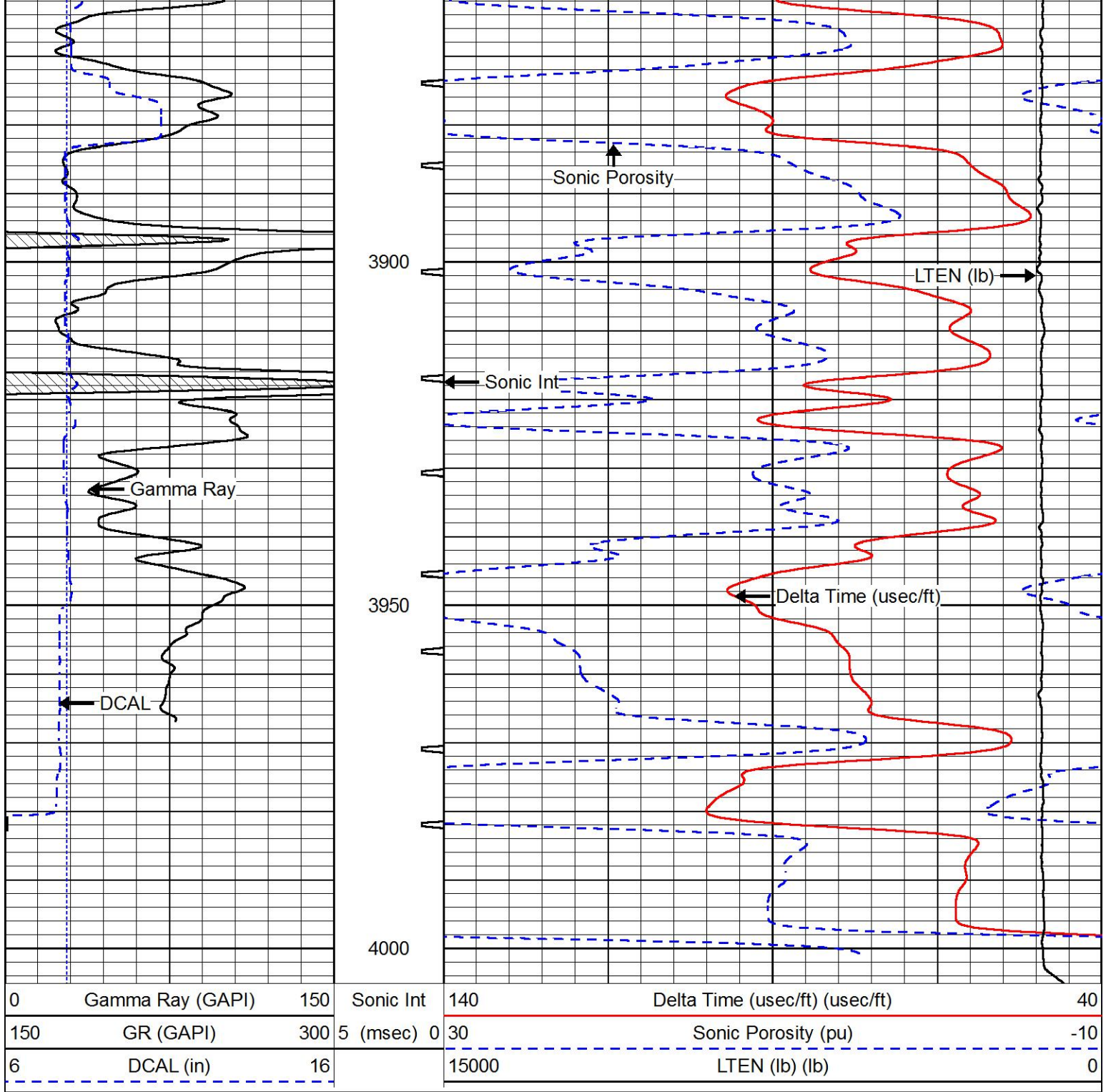
3500

3550

3600



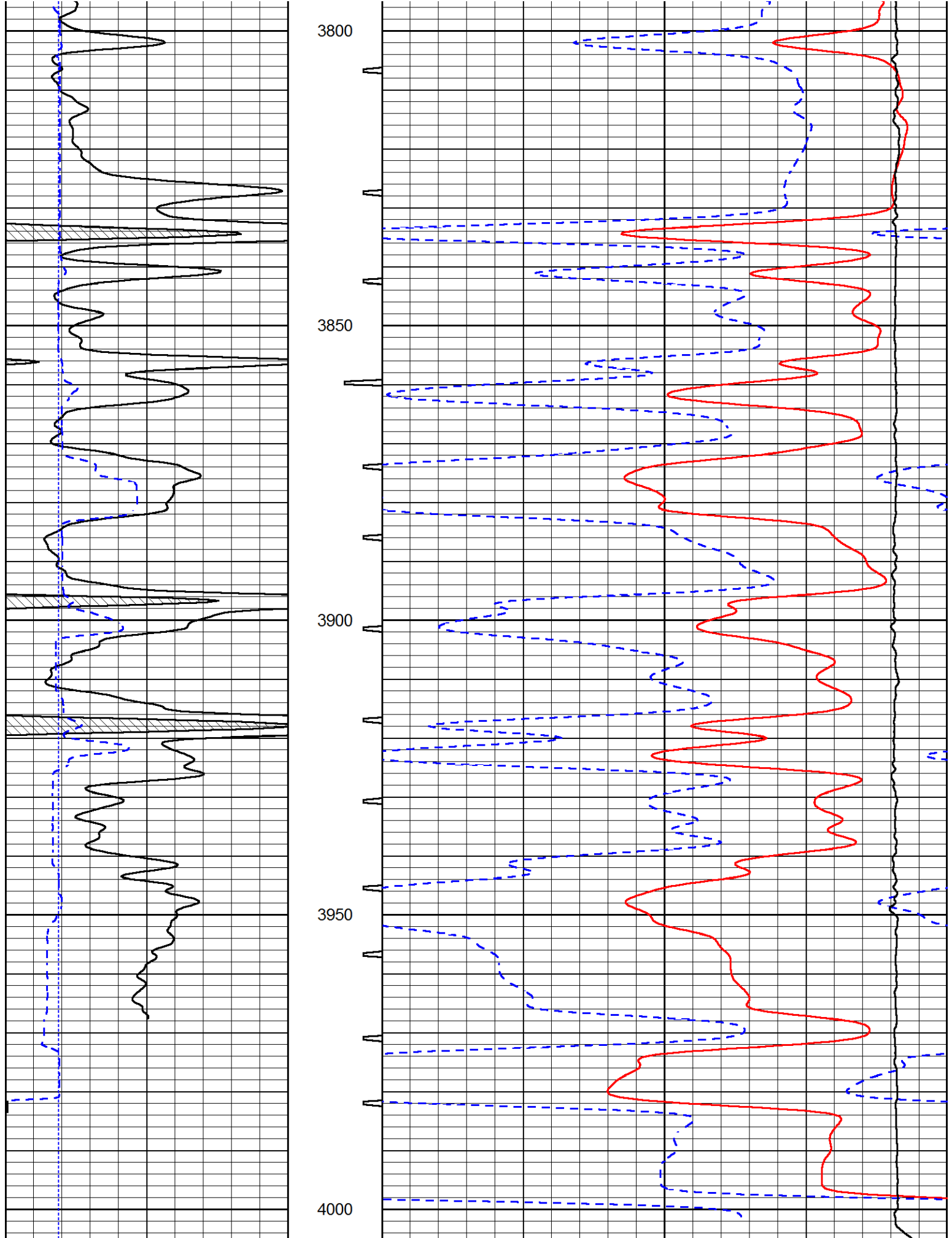




REPEAT SECTION

Database File murfin_geyer_6_35.db
 Dataset Pathname stackmel/pass3.1
 Presentation Format _sonic
 Dataset Creation Tue Sep 24 07:12:34 2019
 Charted by Depth in Feet scaled 1:240

0	Gamma Ray (GAPI)	150	Sonic Int	140	Delta Time (usec/ft) (usec/ft)	40
150	GR (GAPI)	300	5 (msec) 0	30	Sonic Porosity (pu)	-10
6	DCAL (in)	16		15000	LTEN (lb) (lb)	0



0	Gamma Ray (GAPI)	150	Sonic Int	140	Delta Time (usec/ft) (usec/ft)	40
150	GR (GAPI)	300	5 (msec) 0	30	Sonic Porosity (pu)	-10



PIONEER

Pioneer Energy Services

Company	MURFIN DRILLING CO., INC.
Well	GEYER #6-35
Field	WILDCAT
County	GRAHAM
State	KANSAS