



MICRORESISTIVITY LOG

Company MURFIN DRILLING CO., INC.
 Well GEYER #6-35
 Field WILDCAT
 County GRAHAM
 State KANSAS

Company MURFIN DRILLING CO., INC.
 Well GEYER #6-35
 Field WILDCAT
 County GRAHAM State KANSAS

Location: API #: 15-065-24172-00-00
 330' FSL & 475' FWL
 SEC 35 TWP 10S RGE 24W
 Permanent Datum GROUND LEVEL Elevation 2351'
 Log Measured From KELLY BUSHING
 Drilling Measured From KELLY BUSHING
 Other Services
 CNL/CDL
 DIL/BHCS
 Elevation
 K.B. 2356'
 D.F. N/A
 G.L. 2351'

Date	9/24/2019
Run Number	TWO
Depth Driller	4000'
Depth Logger	4002'
Bottom Logged Interval	4001'
Top Log Interval	3400'
Casing Driller	8.625" @ 260'
Casing Logger	260'
Bit Size	7.875"
Type Fluid in Hole	CHEMICAL
Salinity, ppm CL	1500
Density / Viscosity	9.2 51
pH / Fluid Loss	10.0 7.8
Source of Sample	FLOWLINE
Rm @ Meas. Temp	0.48 @ 74
Rmt @ Meas. Temp	0.36 @ 74
Rmc @ Meas. Temp	0.65 @ 74
Source of Rmf / Rmc	CHARTS
Rm @ BHT	0.31 @ 116
Operating Rig Time	5 HOURS
Max Rec. Temp. F	116
Equipment Number	P-24
Location	HAYS
Recorded By	IAN MABB
Witnessed By	SAMAN SHARIFAIE

<<< Fold Here >>>

All interpretations are opinions based on inferences from electrical or other measurements and Pioneer Wireline Services, LLC cannot and does not guarantee the accuracy or correctness of any interpretation, and Pioneer Wireline Services, LLC will not be liable or responsible for any loss, costs, damages, or expenses incurred or sustained by anyone resulting from any interpretation made by any of our officers, agents or employees.

Comments

N/A DENOTES NOT AVAILABLE OR NON-APPLICABLE.
 WAKEENEY, KS.
 6 MILES NORTH TO RD B, 5 MILES WEST TO RD 210,
 1 MILE NORTH TO RD A , 2/3 MILE WEST & NORTH INTO

Log Measured From: KELLY BUSHING 5 Ft. Above Permanent Datum

THANK YOU FOR USING PIONEER ENERGY SERVICES
www.pioneerenergy.com 785-625-3858

Your Pioneer Energy Services Crew	This Log Record Was Witnessed By
Engineer: IAN MABB	Primary Witness: SAMAN SHARIFAIE
Operator:	Secondary Witness:
Operator:	Secondary Witness:
Operator:	Secondary Witness:

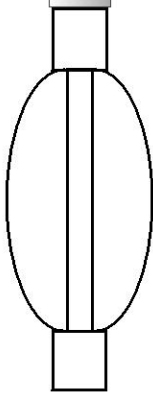
Log Variables

DatabaseC:\ProgramData\Warrior\Data\murfin_geyer_6_35.db
 Dataset field/well/MELSON/pass1/_vars_

Top - Bottom

A 1	BOREID in 7.875	BOTTEMP degF 116	CASEOD in 5.5	CASETHCK in 0	COMPACT 1	FLUIDDEN g/cc 1	M 2	
MATRXDEN g/cc 2.71	NPORSEL Limestone	PERFS 0	SNDERR mmho/m 4	SNDERRM mmho/m 5	SPSHIFT mV 0	SRFTEMP degF 0	SVFLUID usec/ft 189	
SVMATRIX usec/ft 47.6	SZCOR Off	TDEPTH ft 4002						

Sensor	Offset (ft)	Schematic	Description	Length (ft)	O.D. (in)	Weight (lb)
MCAL MI MN	22.50 22.50 22.50		ML-Armadillo (ARM001) Pengo Mandrel & Armadillo ML Electronics (2014)	5.50	3.50	100.00
WVF4 WVF1	13.50 13.50		SLT-PENGO (0001)	16.00	3.50	300.00
WVF3 WVF2	11.50 11.50					



CENT-PENGO (3-PENGO)

5.50

3.00

70.00

Dataset: murfin_geyer_6_35.db: field/well/MELSON/pass1
 Total length: 27.00 ft
 Total weight: 470.00 lb
 O.D.: 3.50 in

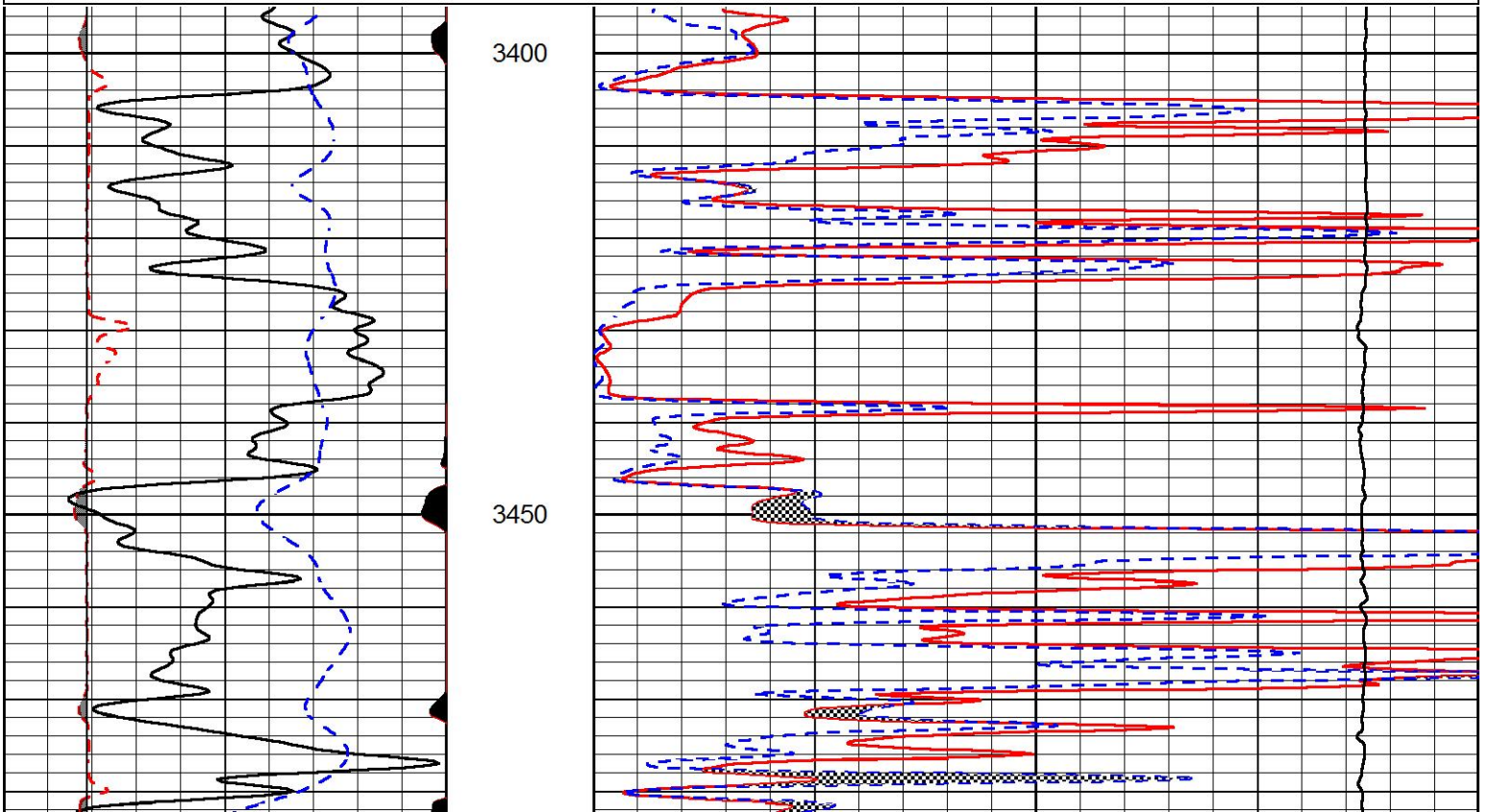


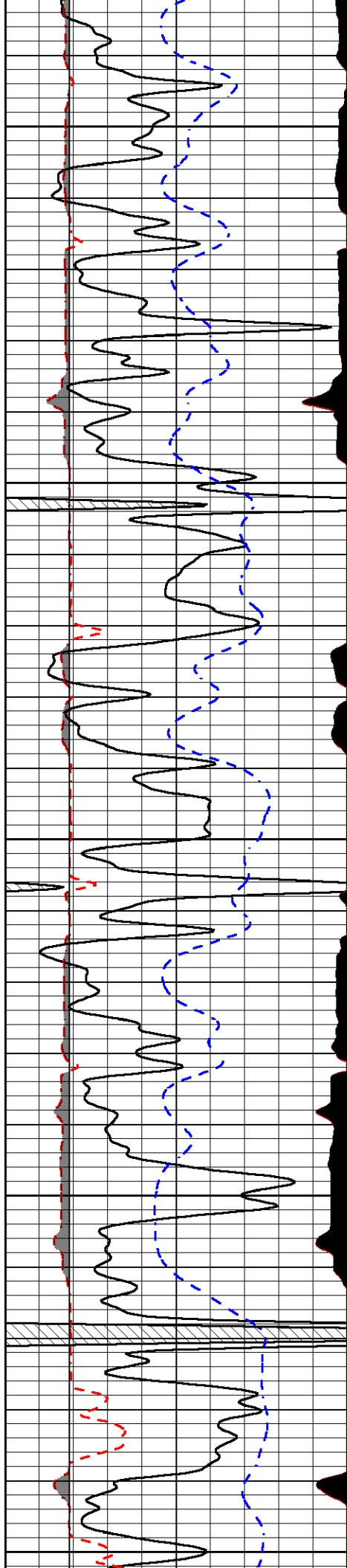
MAIN PASS

Database File murfin_geyer_6_35.db
 Dataset Pathname stackmel/pass4.1
 Presentation Format _micro
 Dataset Creation Tue Sep 24 08:14:32 2019
 Charted by Depth in Feet scaled 1:240

0	GAMMA RAY (GAPI)	150
6	MCAL (in)	16
2.875	mcal (in)	7.875
6	Bit Size (in)	16
-200	SP (mV)	0

0	MICRO INVERSE 1 X 1 (Ohm-m)	40
0	MICRO NORMAL 2" (Ohm-m)	40
10000	Line Weight (lb)	0





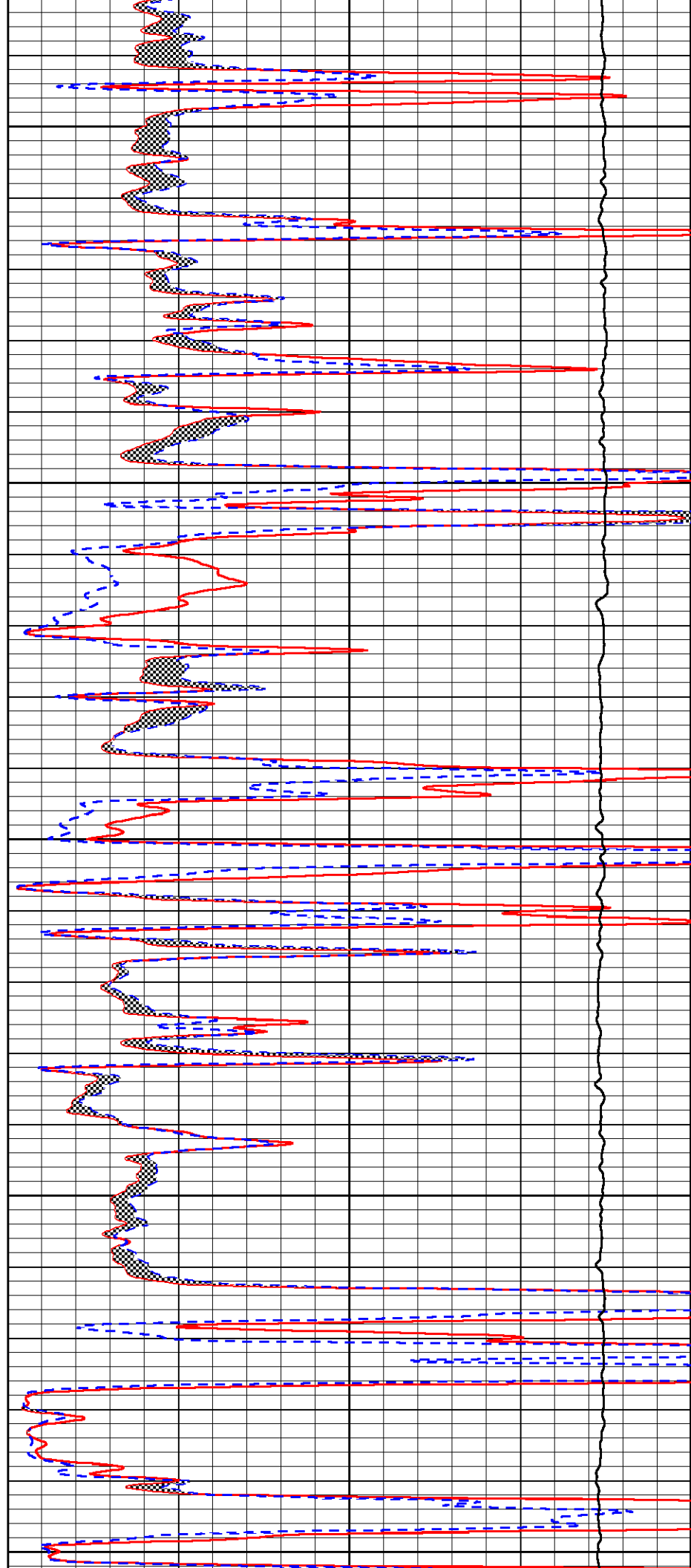
3500

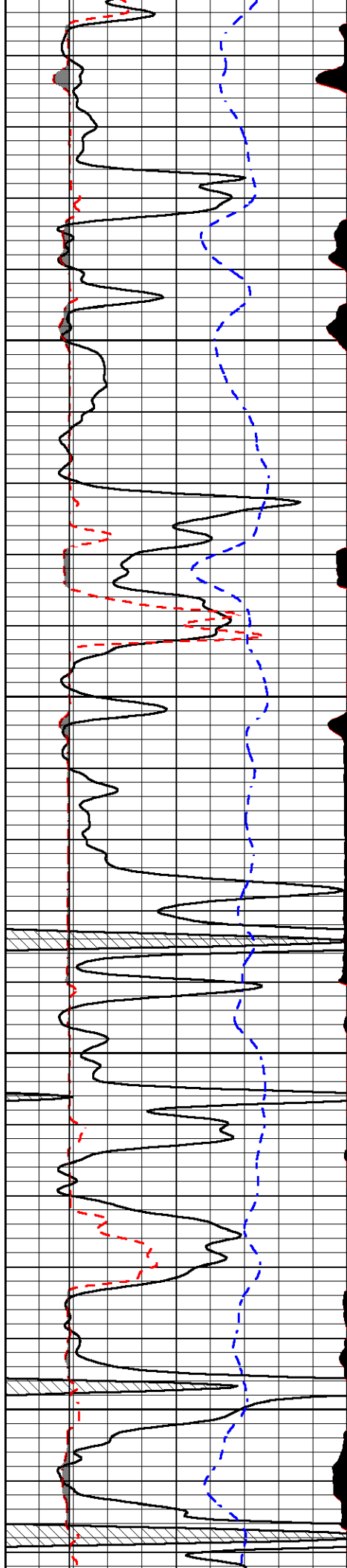
3550

3600

3650

3700



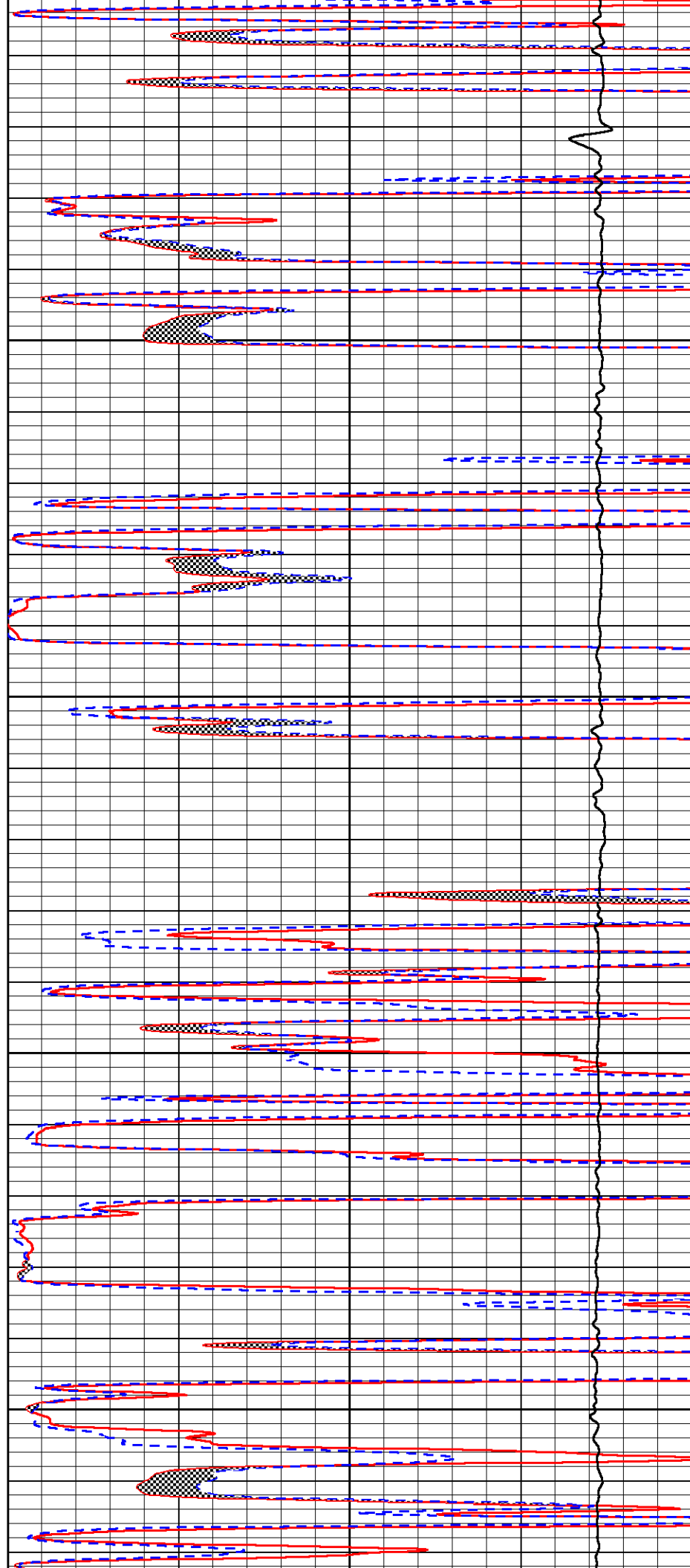


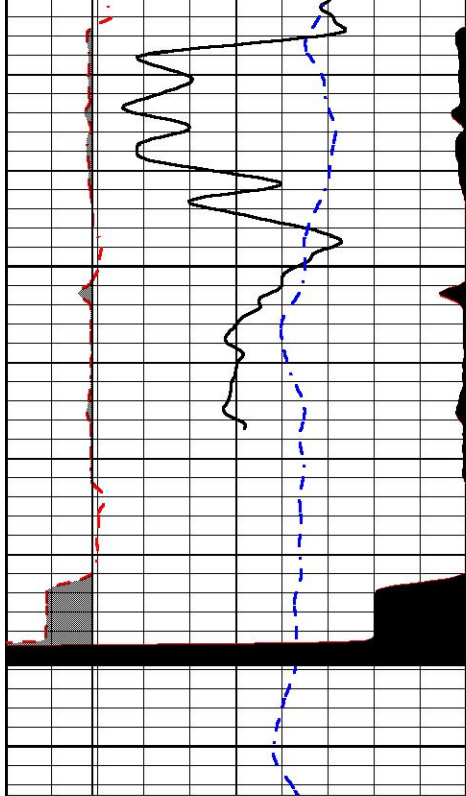
3750

3800

3850

3900

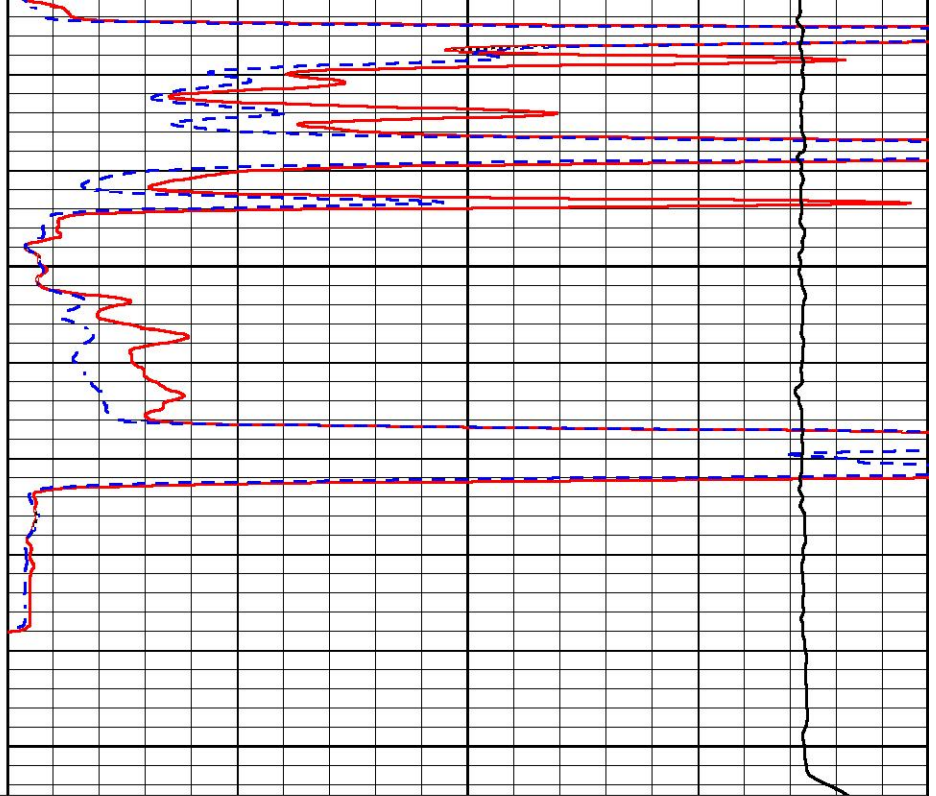




3950

4000

0	GAMMA RAY (GAPI)	150
6	MCAL (in)	16
2.875	mcal (in)	7.875
6	Bit Size (in)	16
-200	SP (mV)	0



0	MICRO INVERSE 1 X 1 (Ohm-m)	40
0	MICRO NORMAL 2" (Ohm-m)	40
10000	Line Weight (lb)	0

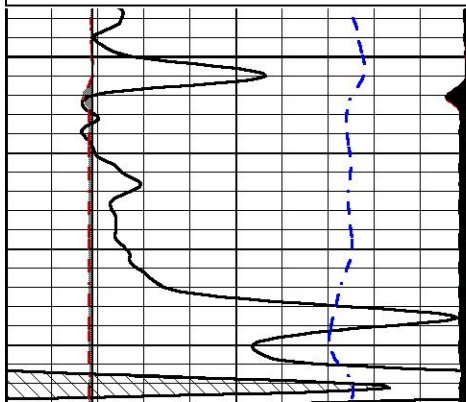


REPEAT SECTION

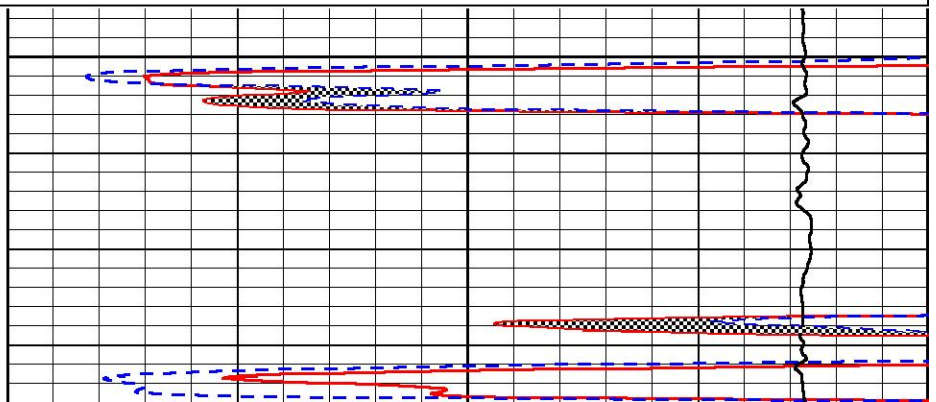
Database File murfin_geyer_6_35.db
 Dataset Pathname stackmel/pass3.1
 Presentation Format _micro
 Dataset Creation Tue Sep 24 07:12:34 2019
 Charted by Depth in Feet scaled 1:240

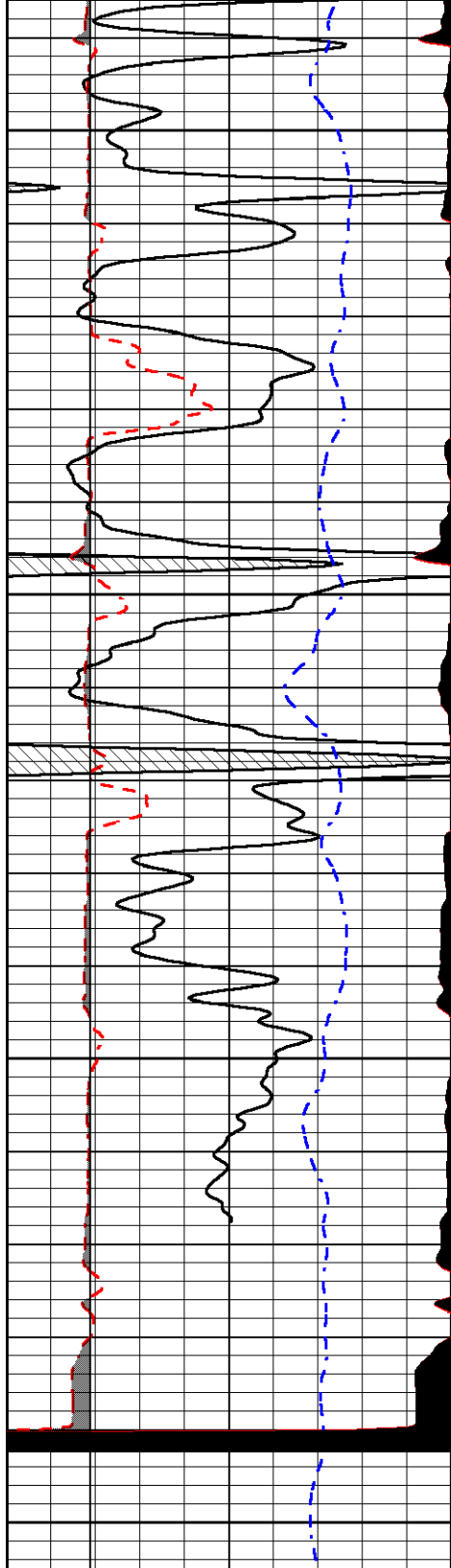
0	GAMMA RAY (GAPI)	150
6	MCAL (in)	16
2.875	mcal (in)	7.875
6	Bit Size (in)	16
-200	SP (mV)	0

0	MICRO INVERSE 1 X 1 (Ohm-m)	40
0	MICRO NORMAL 2" (Ohm-m)	40
10000	Line Weight (lb)	0



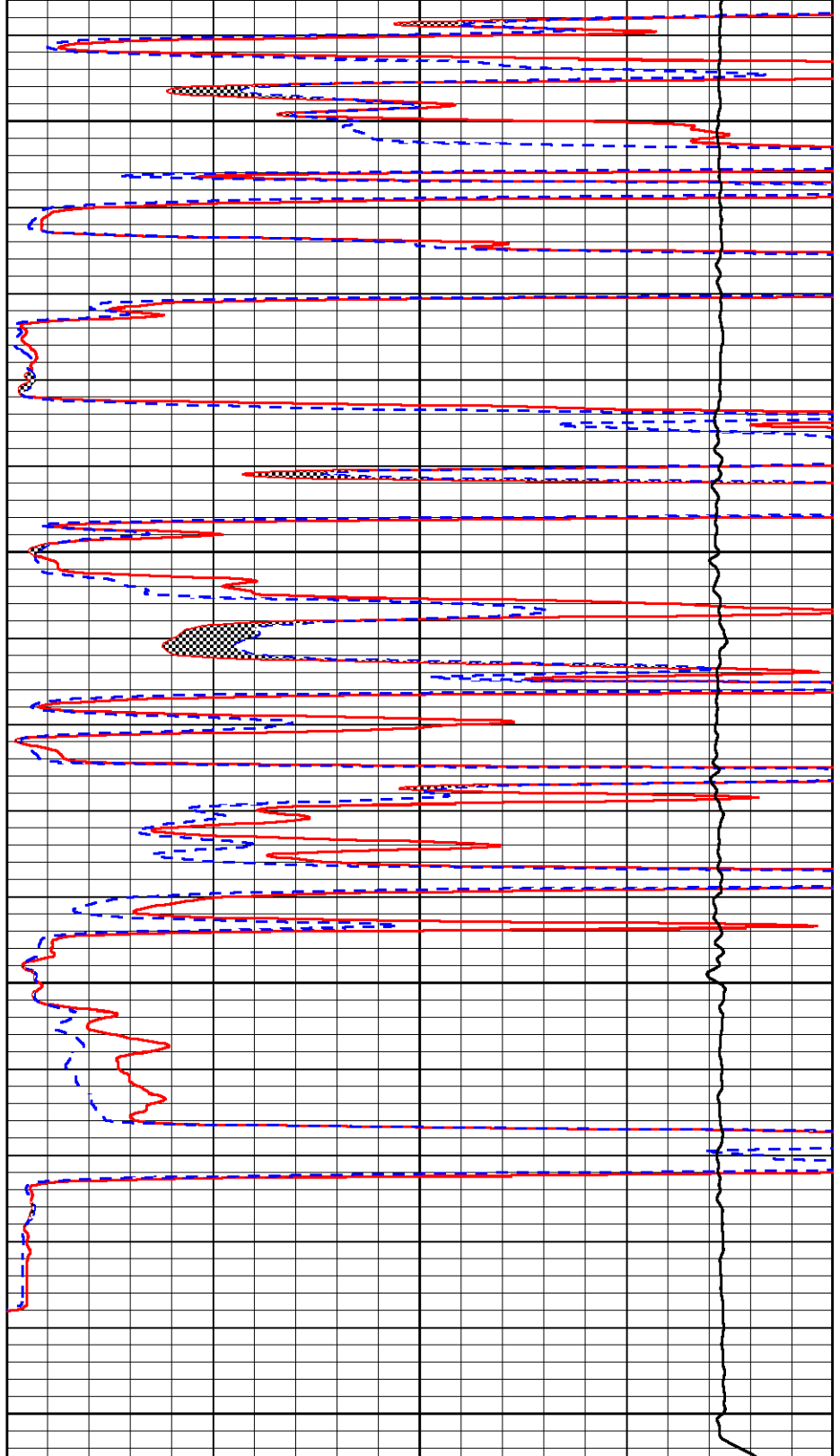
3800





3850
3900
3950
4000

0	GAMMA RAY (GAPI)	150
6	MCAL (in)	16
2.875	mcal (in)	7.875
6	Bit Size (in)	16
-200	SP (mV)	0



0	MICRO INVERSE 1 X 1 (Ohm-m)	40
0	MICRO NORMAL 2" (Ohm-m)	40
10000	Line Weight (lb)	0

Calibration Report

Database File murfin_geyer_6_35.db
 Dataset Pathname MELSON/pass1
 Dataset Creation Tue Sep 24 08:50:04 2019

Serial-Model:
Performed:ARM001-Armadillo
Fri May 24 12:40:08 2019

	Readings			References			Results	
	Zero	Cal		Zero	Cal		m	b
Normal	0.0127	0.6730	V	0.0000	10.0000	Ohm-m	29.0000	-2.4000
Inverse	0.0029	0.8729	V	0.0000	10.0000	Ohm-m	21.0000	-1.5000
Caliper	0.6693	6.5160	V	6.0000	19.0000	in	2.2235	4.4000



PIONEER
Pioneer Energy Services

Company MURFIN DRILLING CO., INC.
Well GEYER #6-35
Field WILDCAT
County GRAHAM
State KANSAS