



MICRO LOG

Company MULL DRILLING COMPANY, INC.
 Well MUCHMORE-THORNBURG UNIT #1-34
 Field CHAPMAN
 County GOVE
 State KANSAS

Company MULL DRILLING COMPANY, INC.
 Well MUCHMORE-THORNBURG UNIT #1-34
 Field CHAPMAN
 County GOVE State KANSAS

Location: API # : 15-063-22336-0000
 2445' FNL & 2130' FEL
 SE - SW - SW - NE
 Permanent Datum GROUND LEVEL Elevation 2558
 Log Measured From KELLY BUSHING 7' A.G.L.
 Drilling Measured From KELLY BUSHING
 SEC 34 TWP 15S RGE 26W
 Other Services
 CDL/CNL/PE
 DIL/SONIC
 Elevation
 K.B. 2565
 D.F. 2563
 G.L. 2558

Date	10/17/19	
Run Number	TWO	
Depth Driller	4580	
Depth Logger	4579	
Bottom Logged Interval	4563	
Top Log Interval	3600	
Casing Driller	8 5/8"@222'	
Casing Logger	222	
Bit Size	7 7/8"	
Type Fluid in Hole	CHEMICAL MUD	CHLORIDES 2,000 PPM
Density / Viscosity	9.2/5.1	
pH / Fluid Loss	10.0/7.6	
Source of Sample	FLOWLINE	
Rim @ Meas. Temp	.900@90F	
Rmf @ Meas. Temp	.675@90F	
Rmc @ Meas. Temp	1.08@90F	
Source of Rmf / Rmc	MEASUREMENT	
Rim @ BHT	.669@121F	
Time Circulation Stopped	4 HOURS	
Time Logger on Bottom	7:30 P.M.	
Maximum Recorded Temperature	121F	
Equipment Number	922339	
Location	HAYS, KANSAS	
Recorded By	JEFF LUEBBERS	
Witnessed By	PHIL ASKEY	

<<< Fold Here >>>

All interpretations are opinions based on inferences from electrical or other measurements and we cannot and do not guarantee the accuracy or correctness of any interpretation, and we shall not, except in the case of gross or willful negligence on our part, be liable or responsible for any loss, costs, damages, or expenses incurred or sustained by anyone resulting from any interpretation made by any of our officers, agents or employees. These interpretations are also subject to our general terms and conditions set out in our current Price Schedule.

Comments

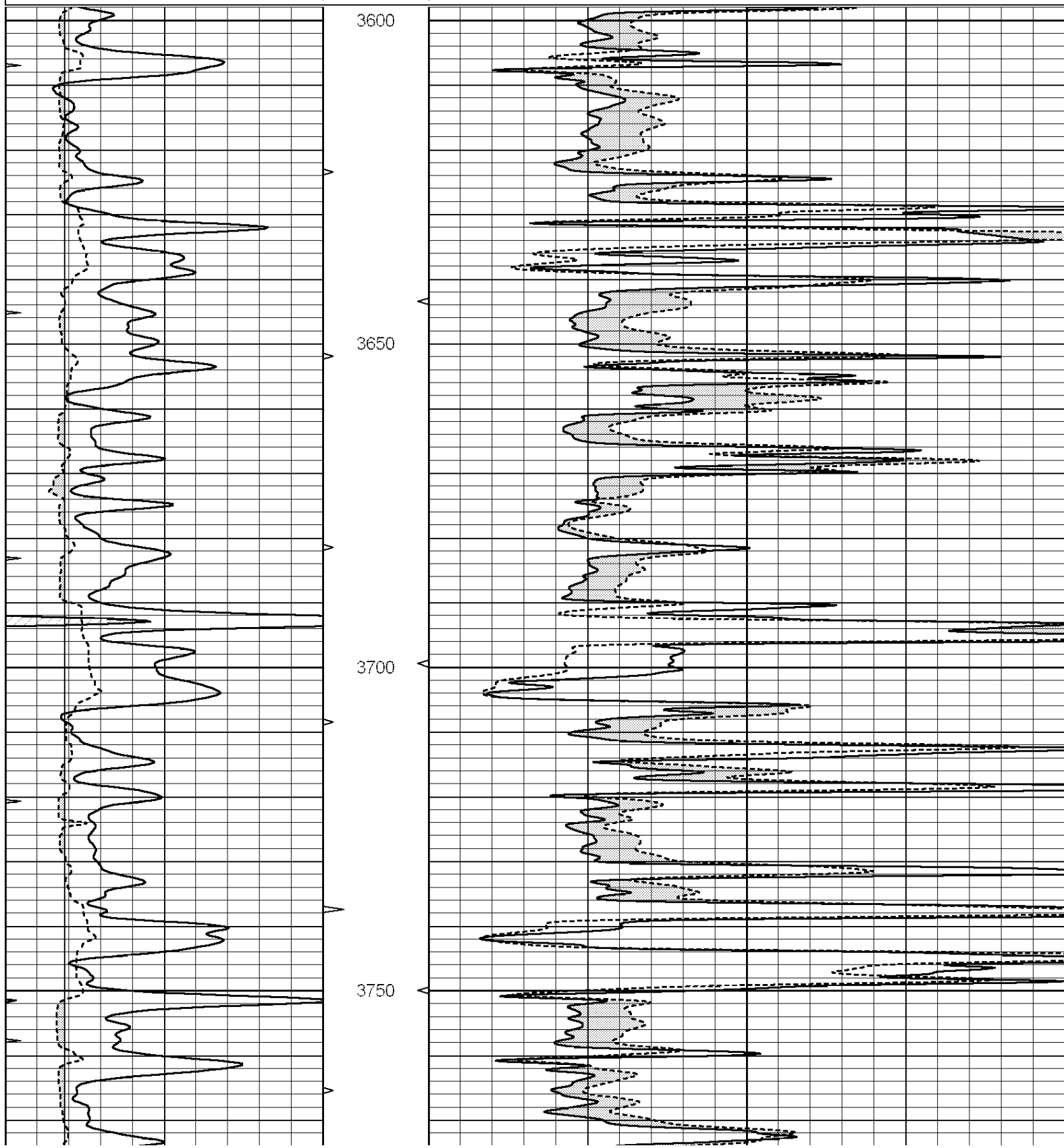
THANK YOU FOR USING ELI WIRELINE HAYS, KANSAS (785) 628-6395
 DIRECTIONS
 W. EDGE OF UTICA, KS. ON HWY 4, 4N., 1W., 1/2N., W. INTO

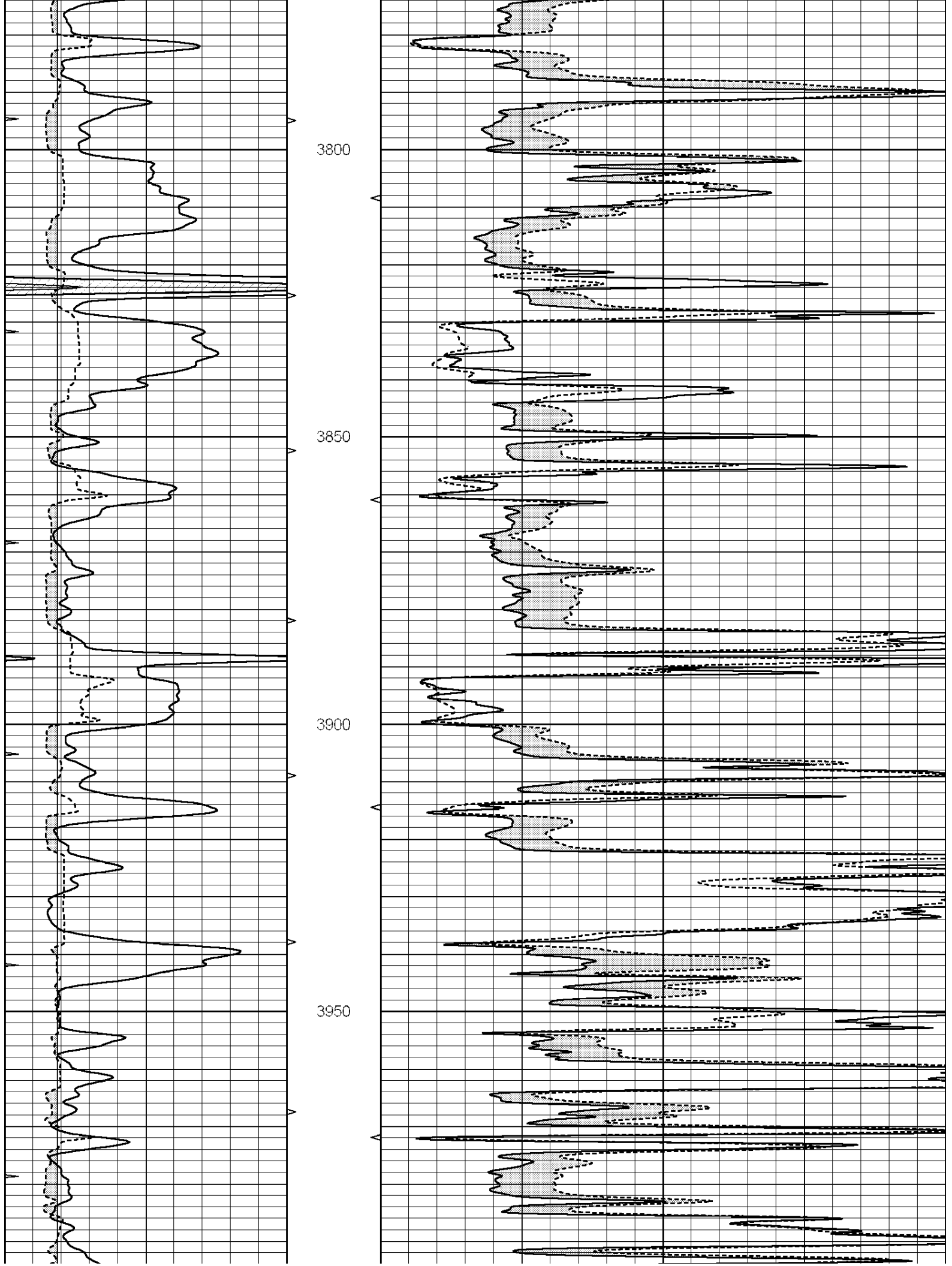


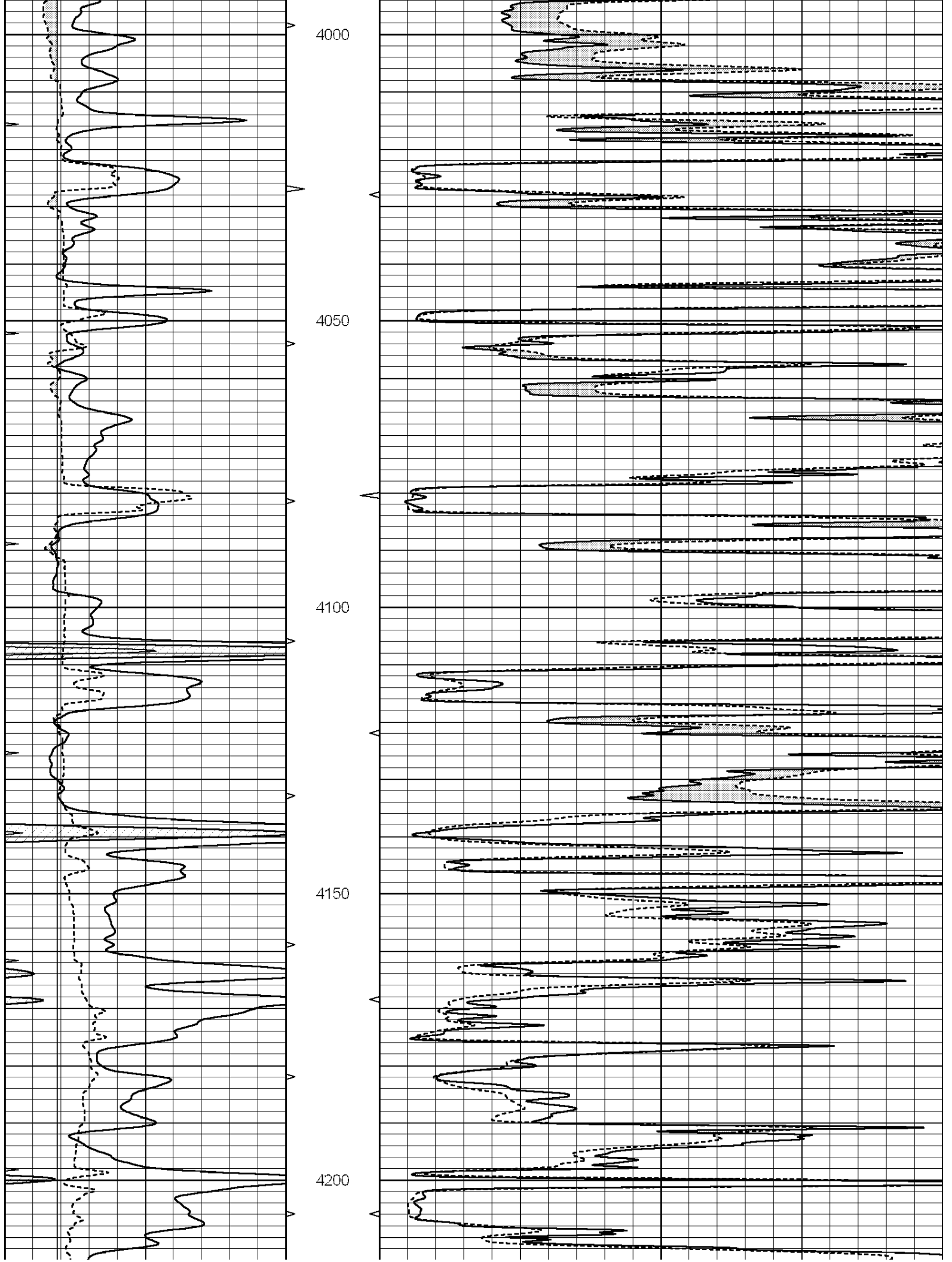
MAIN SECTION

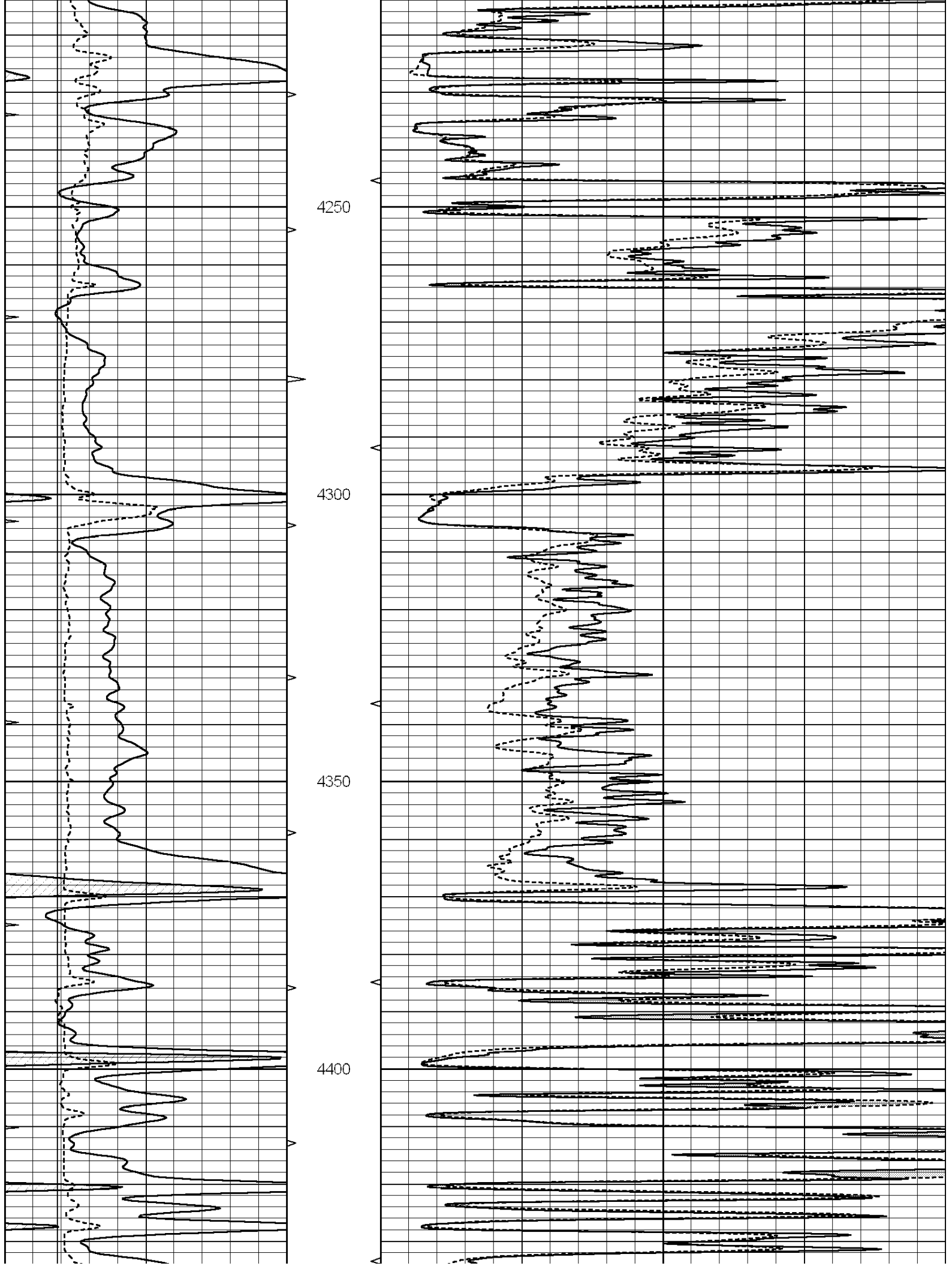
Database File: 3972pe.db
 Dataset Pathname: pass6.3
 Presentation Format: micro
 Dataset Creation: Thu Oct 17 19:35:32 2019 by Calc SOC 120430
 Charted by: Depth in Feet scaled 1:240

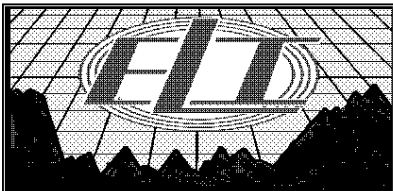
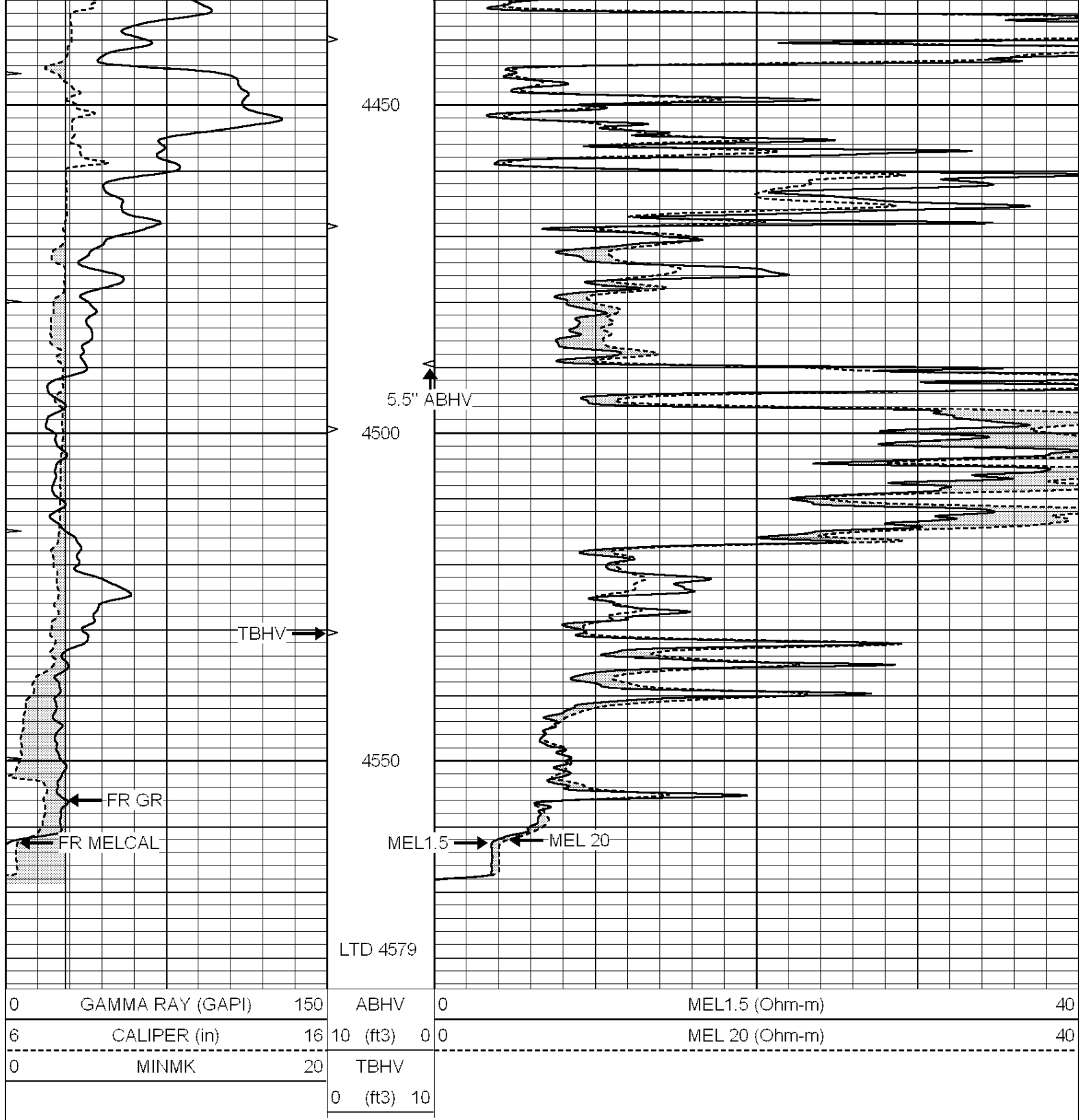
0	GAMMA RAY (GAPI)	150	ABHV	0	MEL1.5 (Ohm-m)	40
6	CALIPER (in)	16	10 (ft3)	0	MEL 20 (Ohm-m)	40
0	MINMK	20	TBHV			
			0 (ft3)	10		











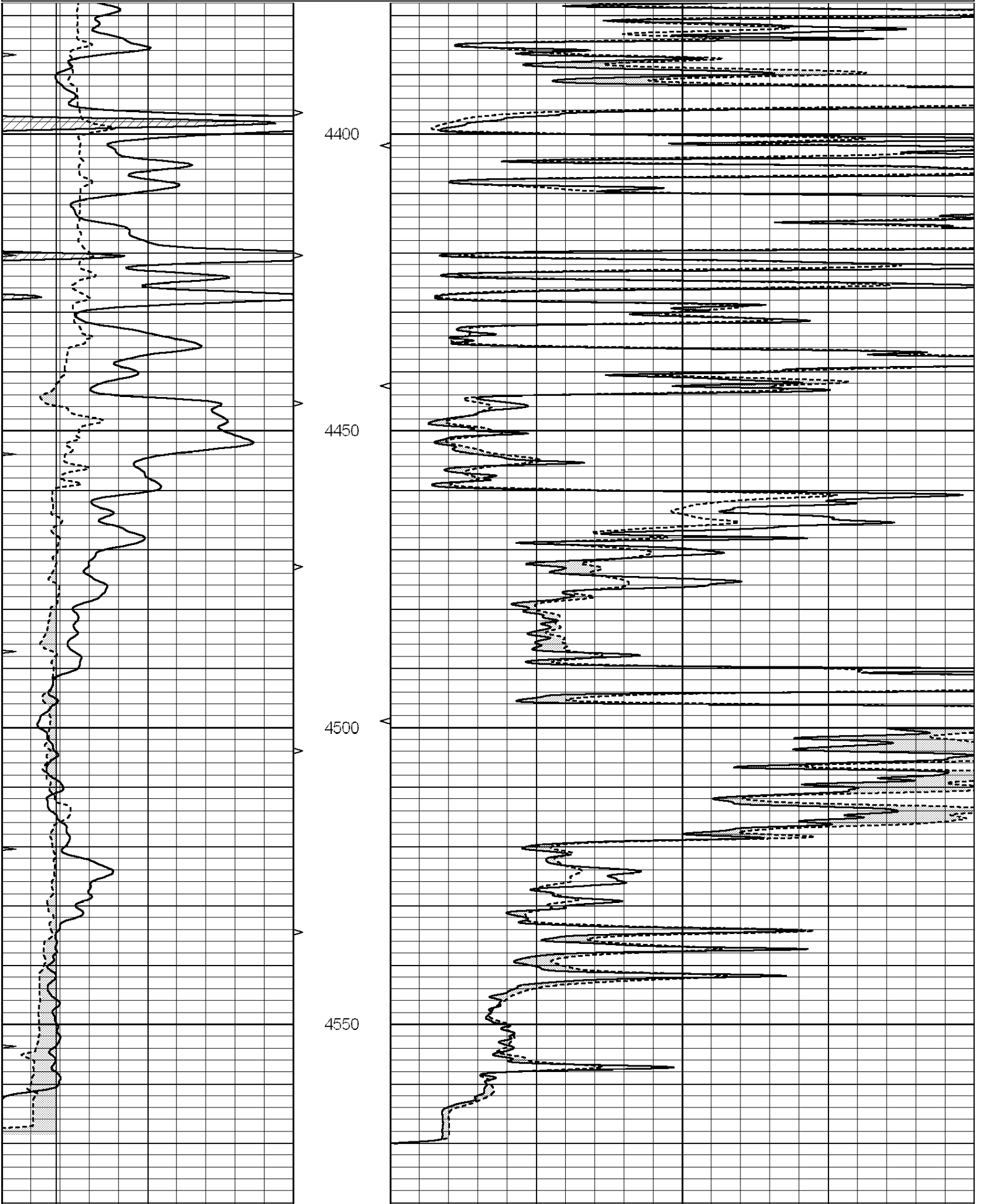
REPEAT SECTION

Database File: 3972pe.db
 Dataset Pathname: pass5.2
 Presentation Format: micro
 Dataset Creation: Thu Oct 17 19:59:05 2019
 Charted by: Depth in Feet scaled 1:240

0	GAMMA RAY (GAPI)	150	ABHV	0	MEL1.5 (Ohm-m)	40
---	------------------	-----	------	---	----------------	----

6	CALIPER (in)	16	10 (ft3)	0 0
0	MINMK	20	TBHV	
			0 (ft3)	10

MEL 20 (Ohm-m) 40



0	GAMMA RAY (GAPI)	150	ABHV	0	MEL1.5 (Ohm-m)	40
6	CALIPER (in)	16	10 (ft3)	0	MEL 20 (Ohm-m)	40
0	MINMK	20	TBHV			
			0 (ft3)	10		

Calibration Report

Database File: 3972pe.db
Dataset Pathname: pass6.3
Dataset Creation: Thu Oct 17 19:35:32 2019 by Calc SOC 120430

MICRO Calibration Report

Serial Number: 070911
Tool Model: ProbeN
Performed: Wed Oct 16 01:19:56 2019

Caliper Calibration: Gain=6.838 Offset=-1.094

	Low Cal	High Cal
References	8.000	16.000
Readings	1.330	2.500

1.5" Calibration: Gain=40.000 Offset=-1.000

	Low Cal	High Cal
References	0.000	20.000
Readings	0.001	1.240

2" Calibration: Gain=46.000 Offset=-1.000

	Low Cal	High Cal
References	0.000	20.000
Readings	0.001	1.076

Gamma Ray Calibration Report

Serial Number: 070559
Tool Model: OPEN_GR
Performed: Tue Oct 08 07:30:39 2019

Calibrator Value: 1.0 GAPI

Background Reading: 0.0 cps
Calibrator Reading: 1.0 cps

Sensitivity: 0.2500 GAPI/cps