



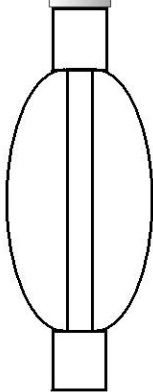
# Log Variables

DatabaseC:\ProgramData\Warrior\Data\murfyn\_jones\_a\_4\_17.db  
 Dataset field/well/SON/pass1/\_vars\_

## Top - Bottom

A 1	BOREID in 7.875	BOTTEMP degF 124	CASEOD in 5.5	CASETHCK in 0	COMPACT 1	FLUIDDEN g/cc 1	M 2
MATRXDEN g/cc 2.71	NPORSEL Limestone	PERFS 0	SNDERR mmho/m 0	SNDERRM mmho/m 0	SPSHIFT mV 0	SRFTEMP degF 72	SVFLUID usec/ft 189
SVMATRIX usec/ft 47.6	SZCOR Off	TDEPTH ft 0					

Sensor	Offset (ft)	Schematic	Description	Length (ft)	O.D. (in)	Weight (lb)
MCAL MI MN	22.50 22.50 22.50		ML-Armadillo (ARM001) Pengo Mandrel & Armadillo ML Electronics (2014)	5.50	3.50	100.00
WVF4 WVF1	13.50 13.50		SLT-PENGO (0001)	16.00	3.50	300.00
WVF3 WVF2	11.50 11.50					



CENT-PENGO (3-PENGO)

5.50

3.00

70.00

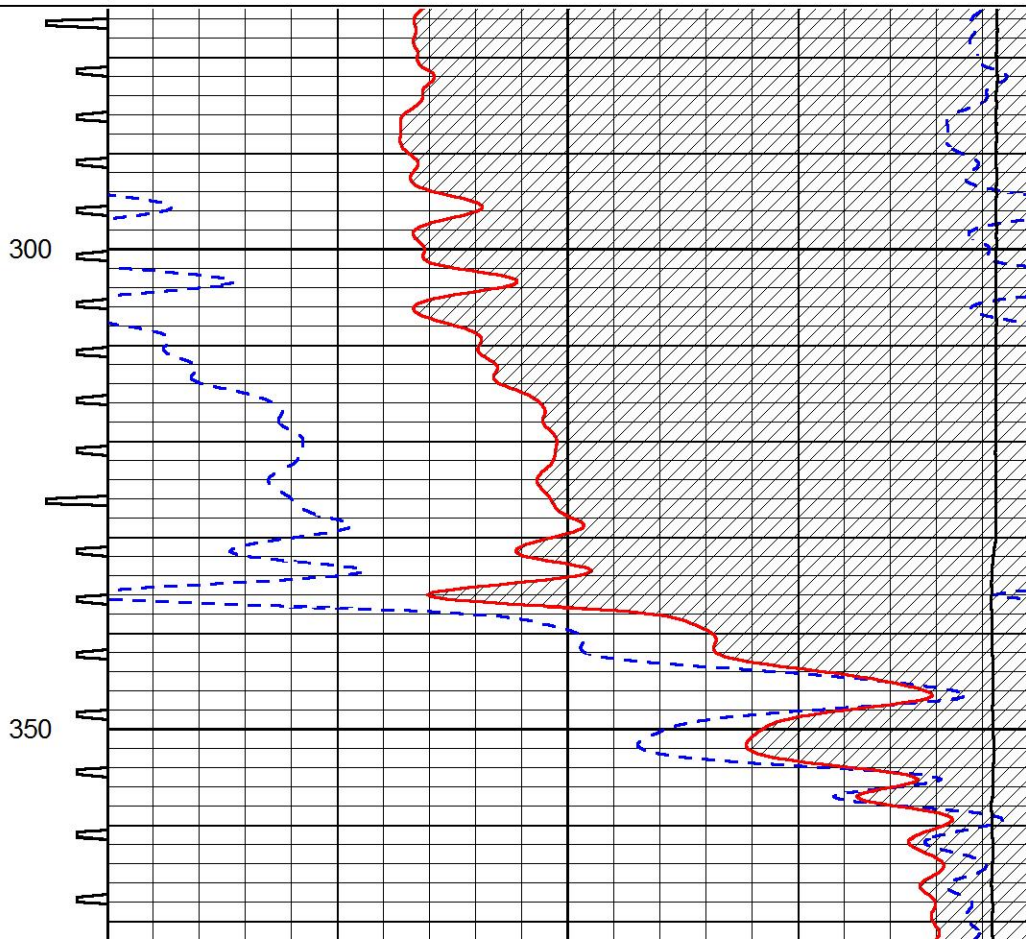
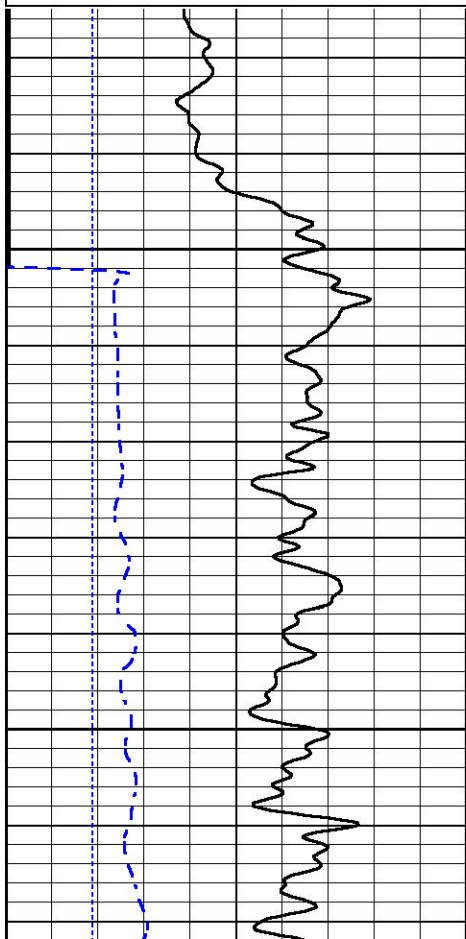
Dataset: murfin\_jones\_a\_4\_17.db: field/well/SON/pass1  
 Total length: 27.00 ft  
 Total weight: 470.00 lb  
 O.D.: 3.50 in

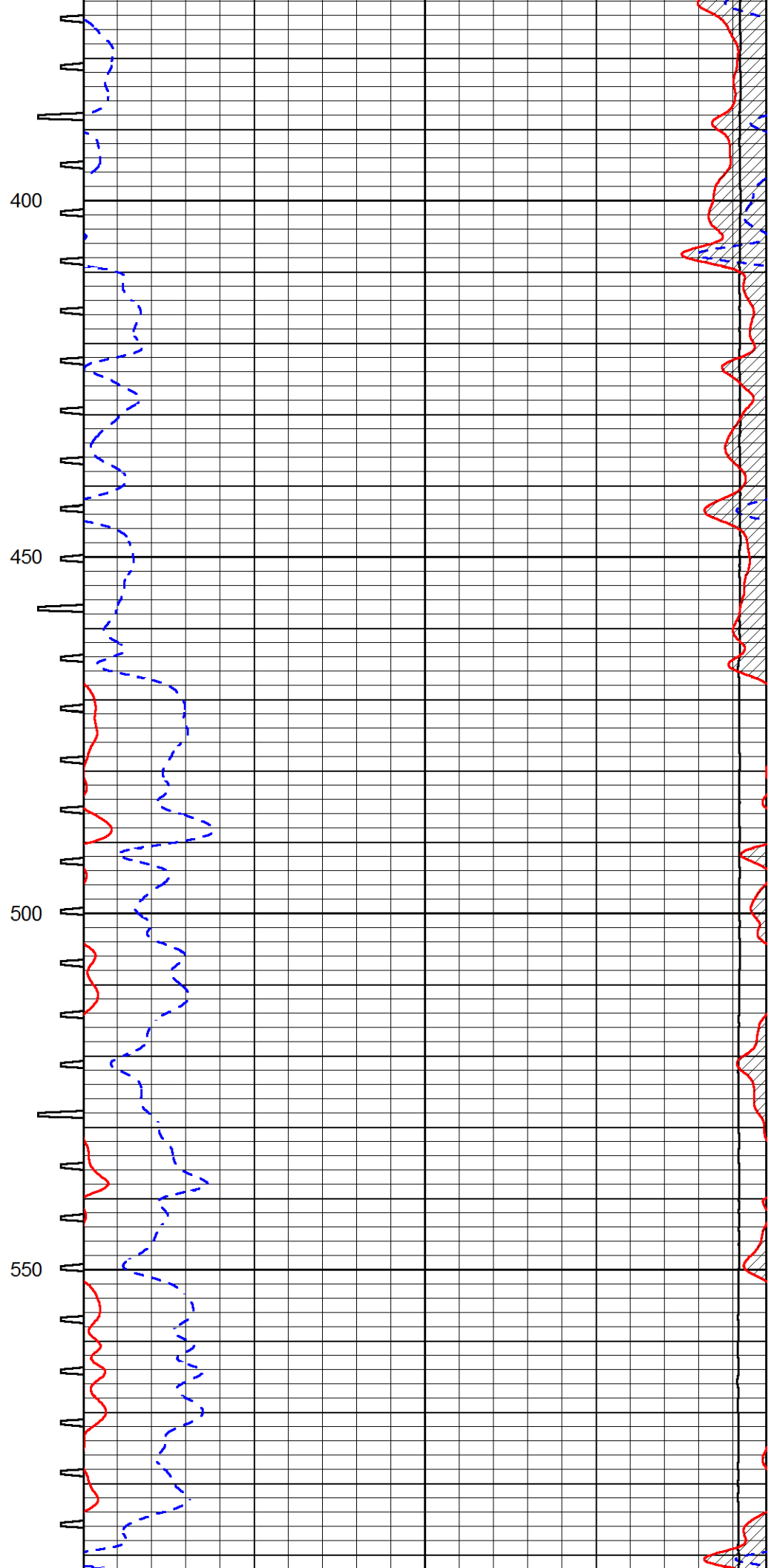
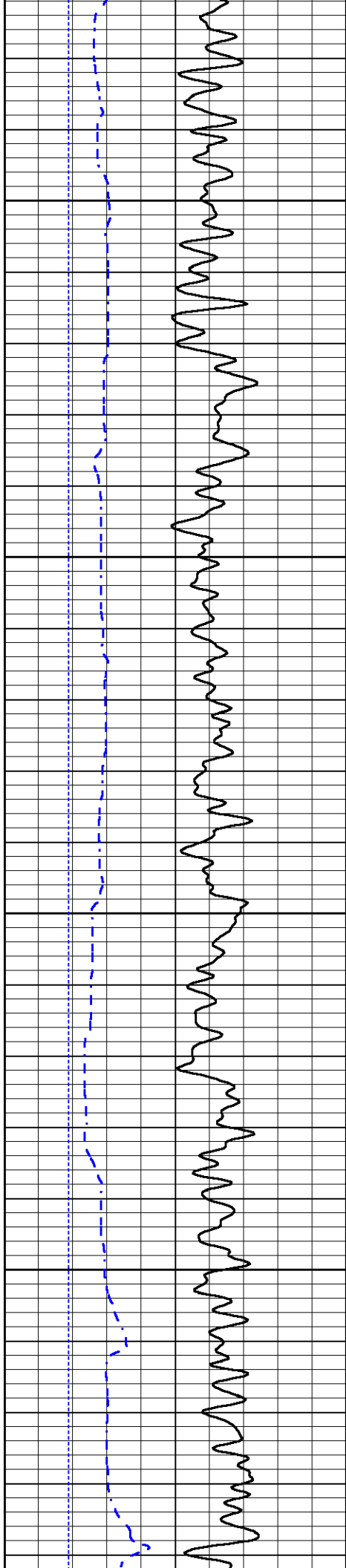


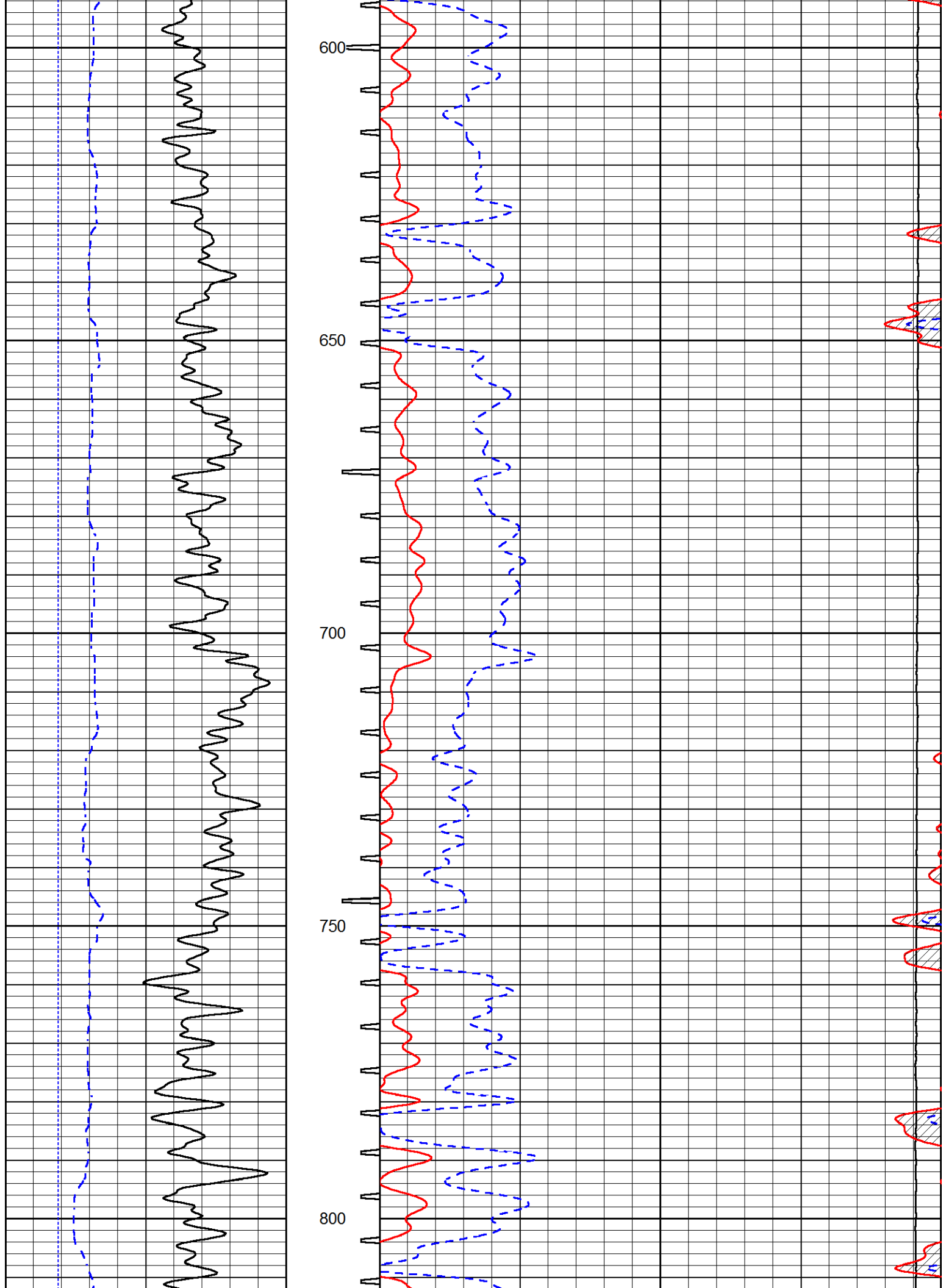
# MAIN PASS

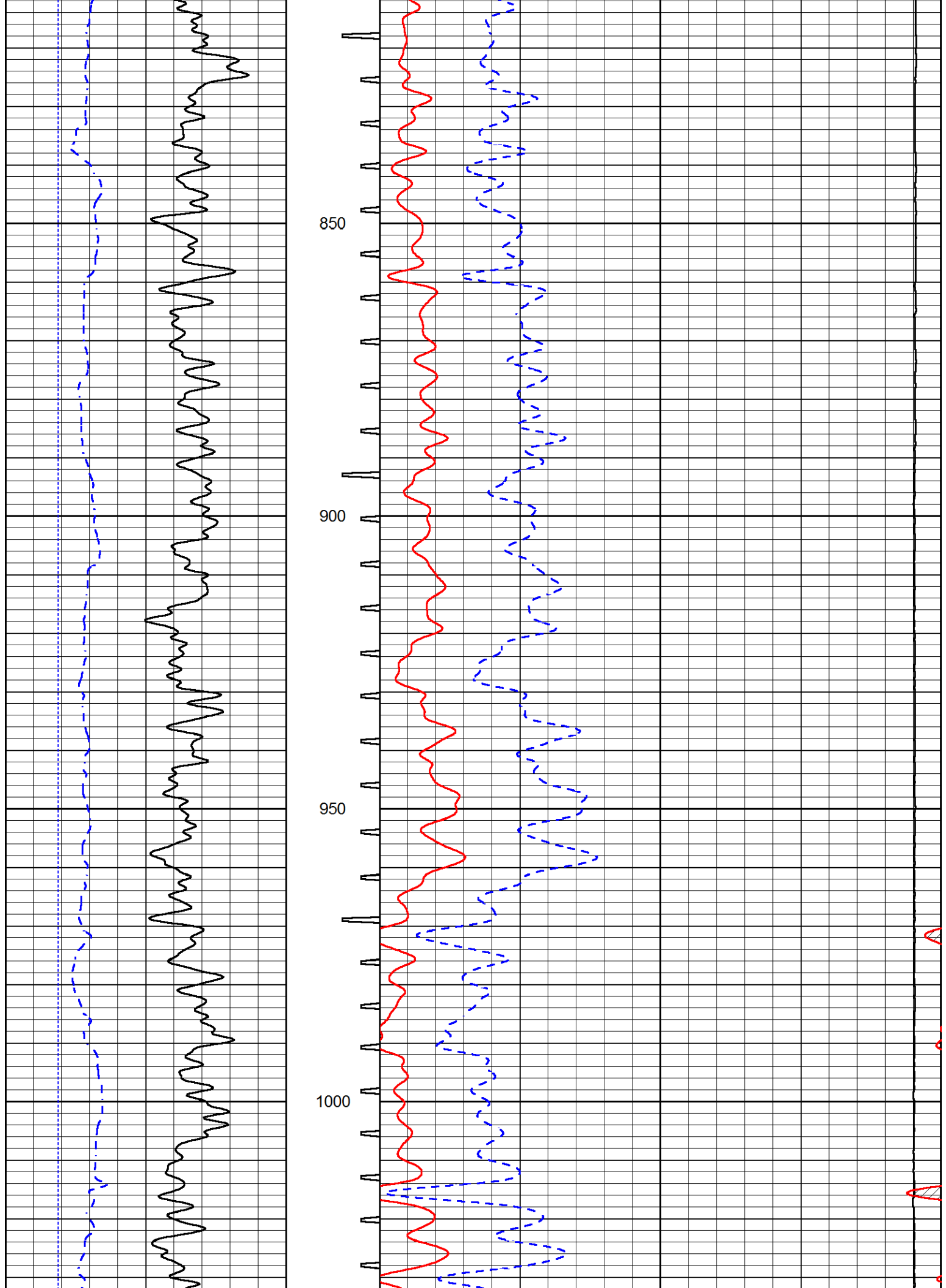
Database File: murfin\_jones\_a\_4\_17.db  
 Dataset Pathname: stackmel/pass4.1  
 Presentation Format: \_sonic  
 Dataset Creation: Sat Sep 21 03:08:59 2019  
 Charted by: Depth in Feet scaled 1:240

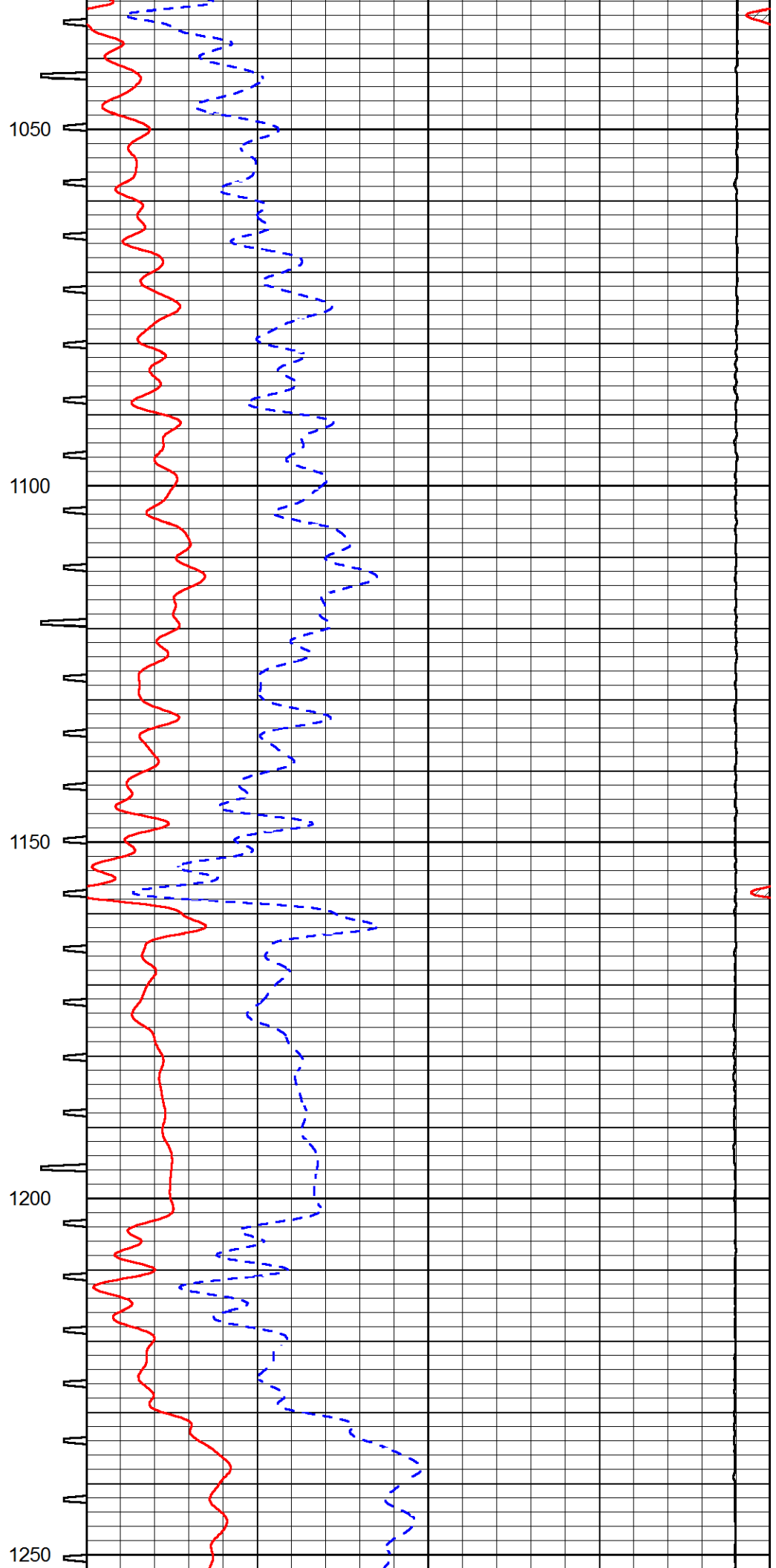
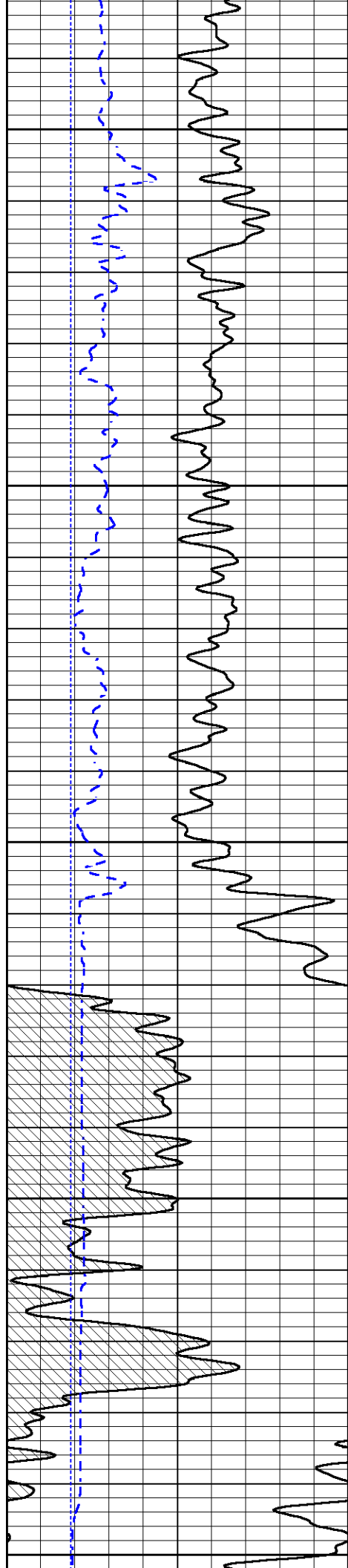
0	Gamma Ray (GAPI)	150	Sonic Int	140	Delta Time (usec/ft) (usec/ft)	40
150	GR (GAPI)	300	5 (msec) 0	30	Sonic Porosity (pu)	-10
6	DCAL (in)	16		15000	LTEN (lb) (lb)	0

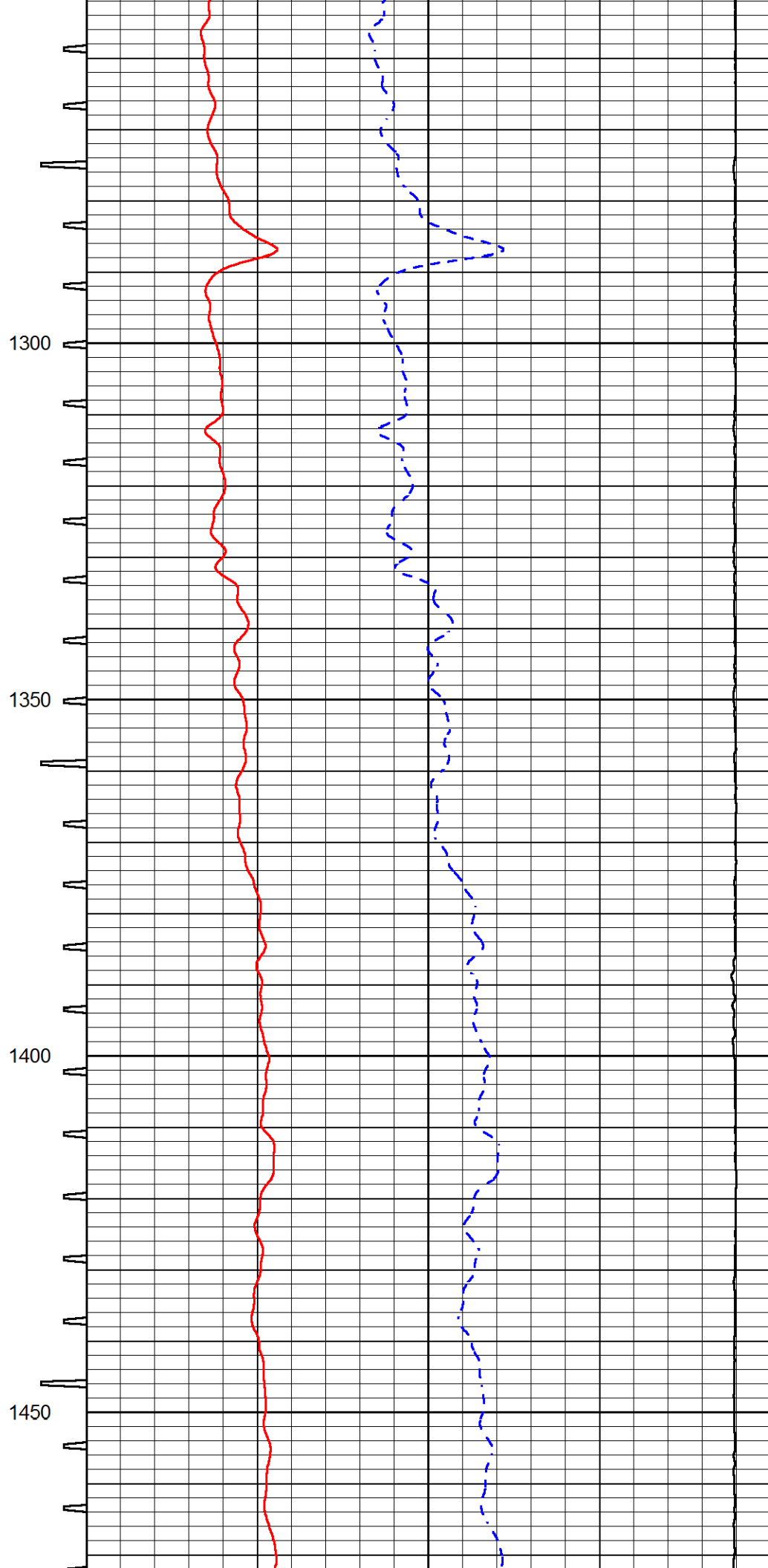
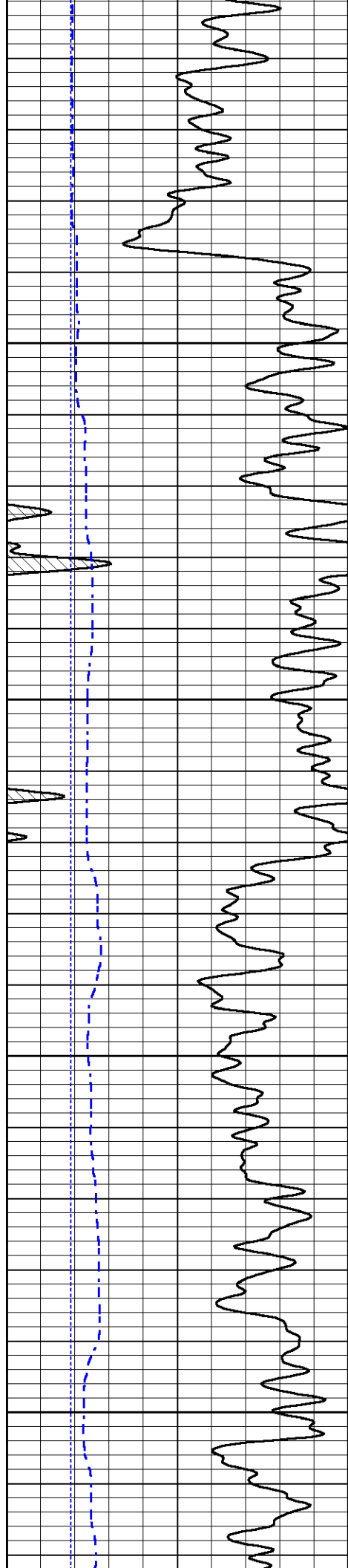


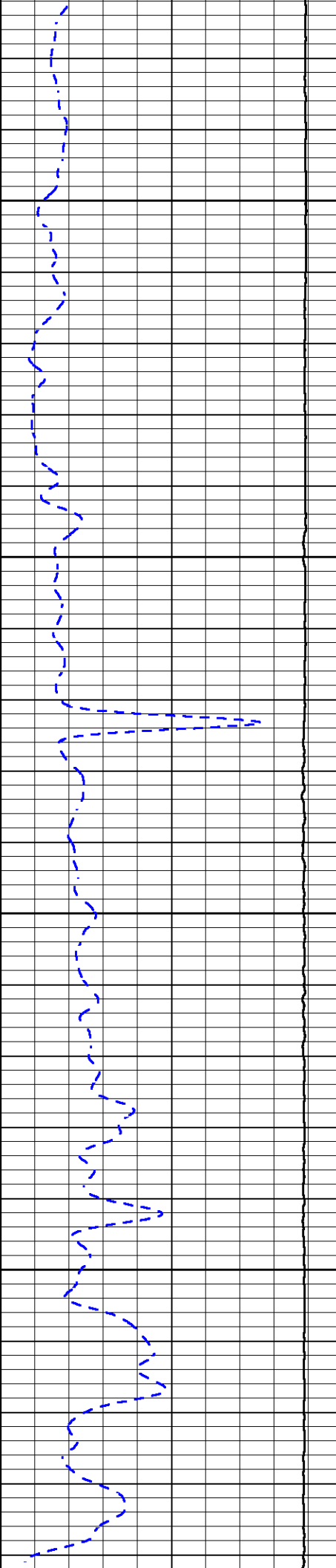
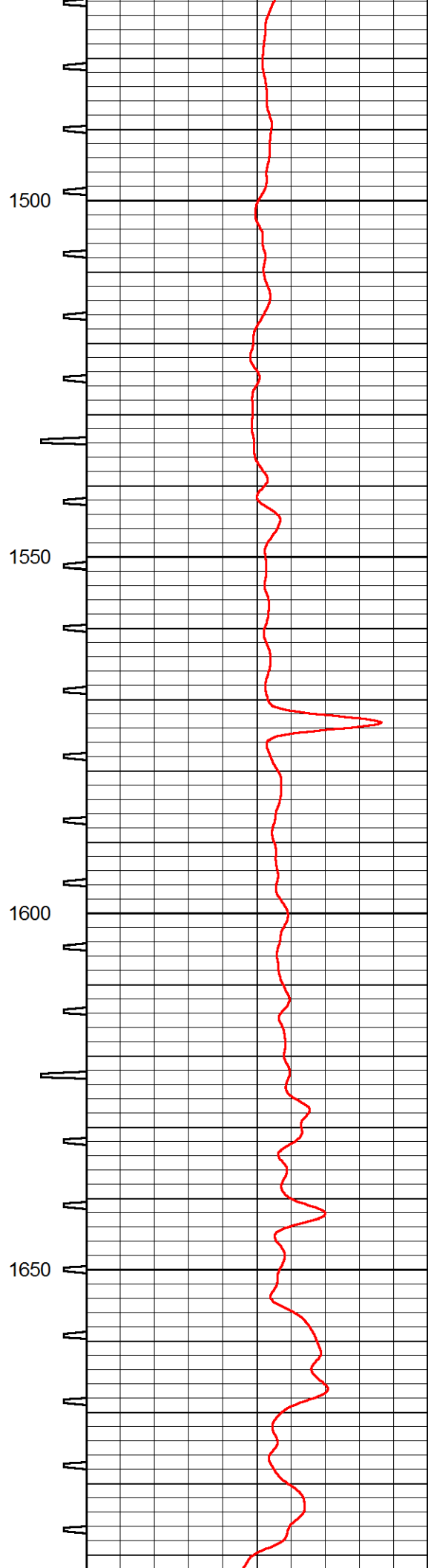
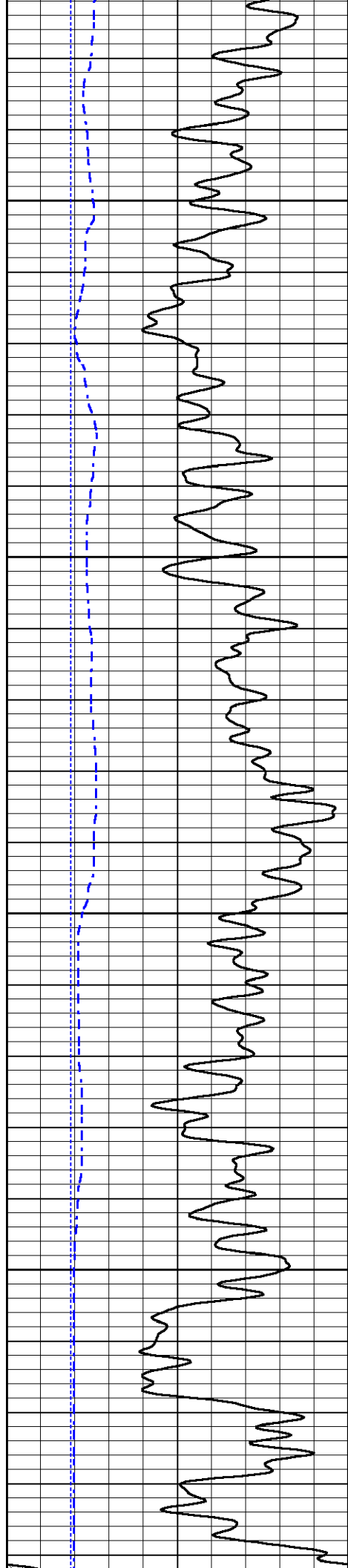


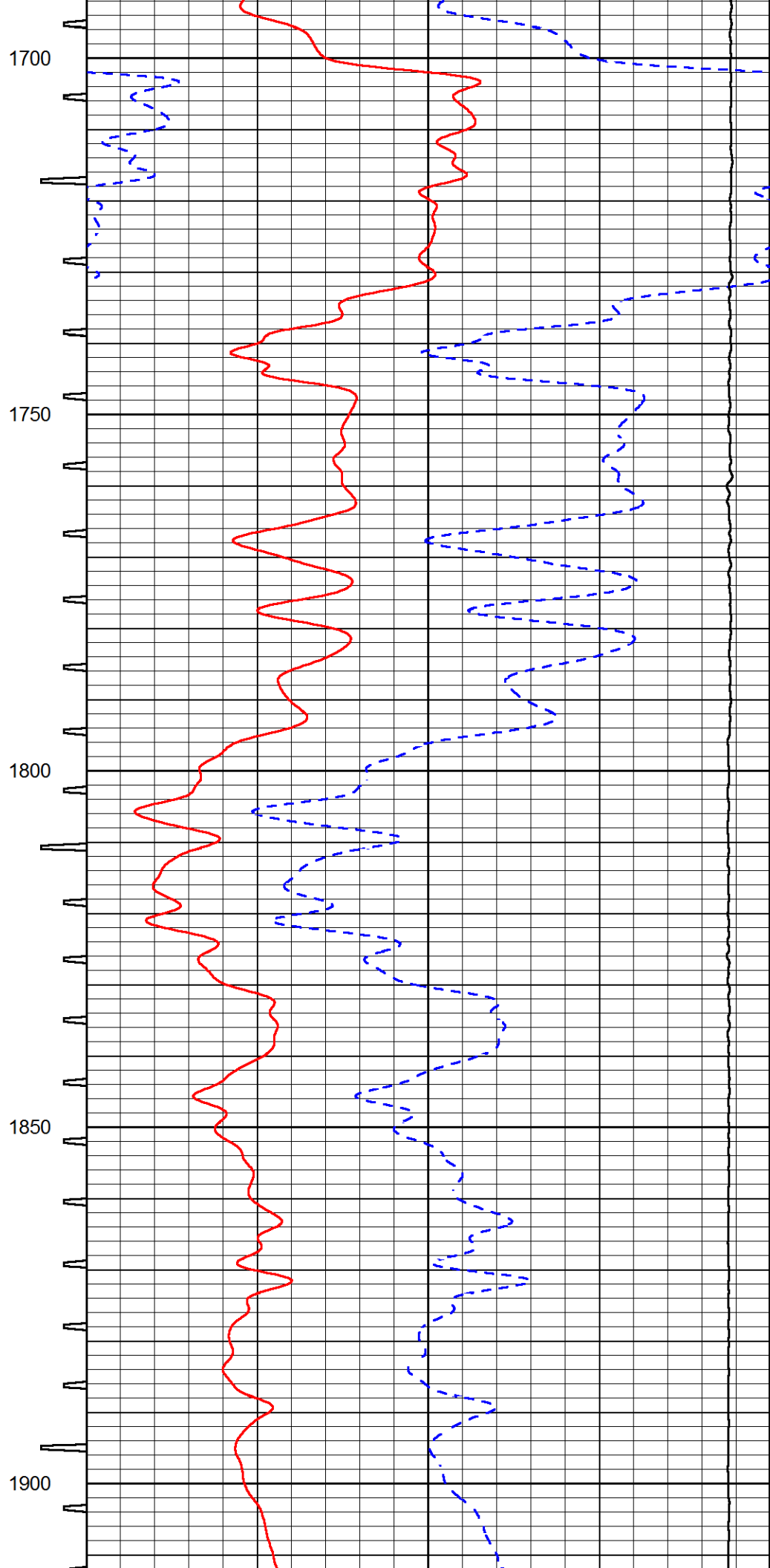
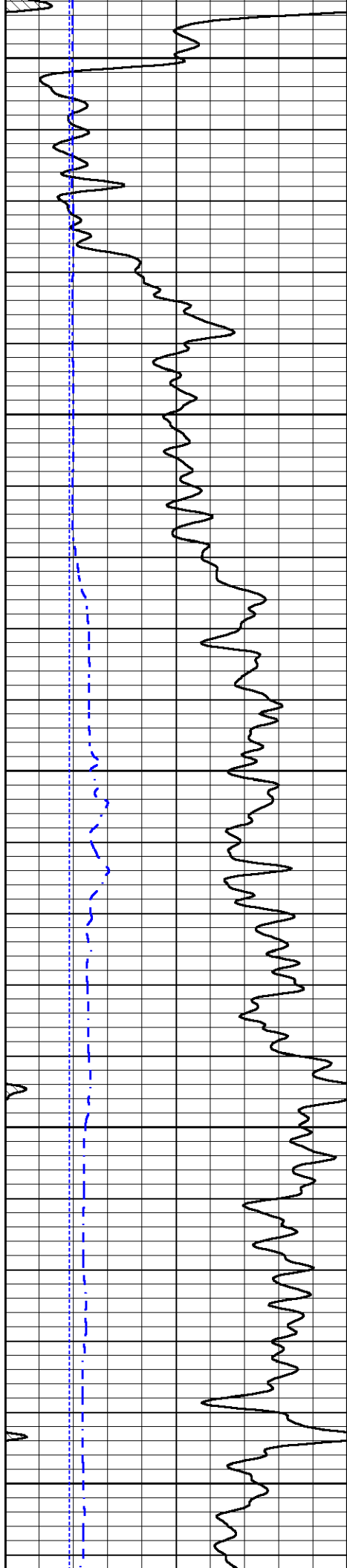


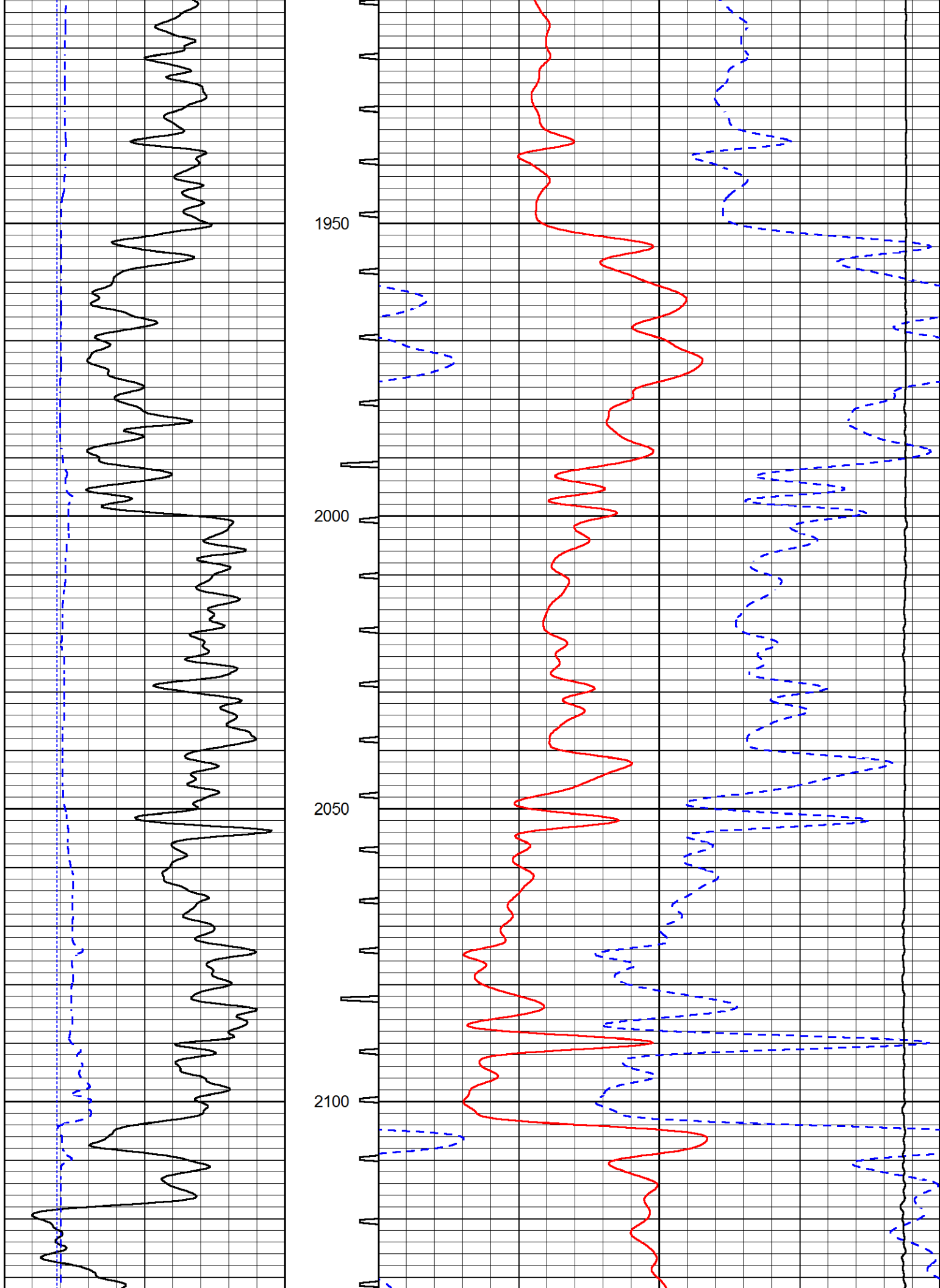


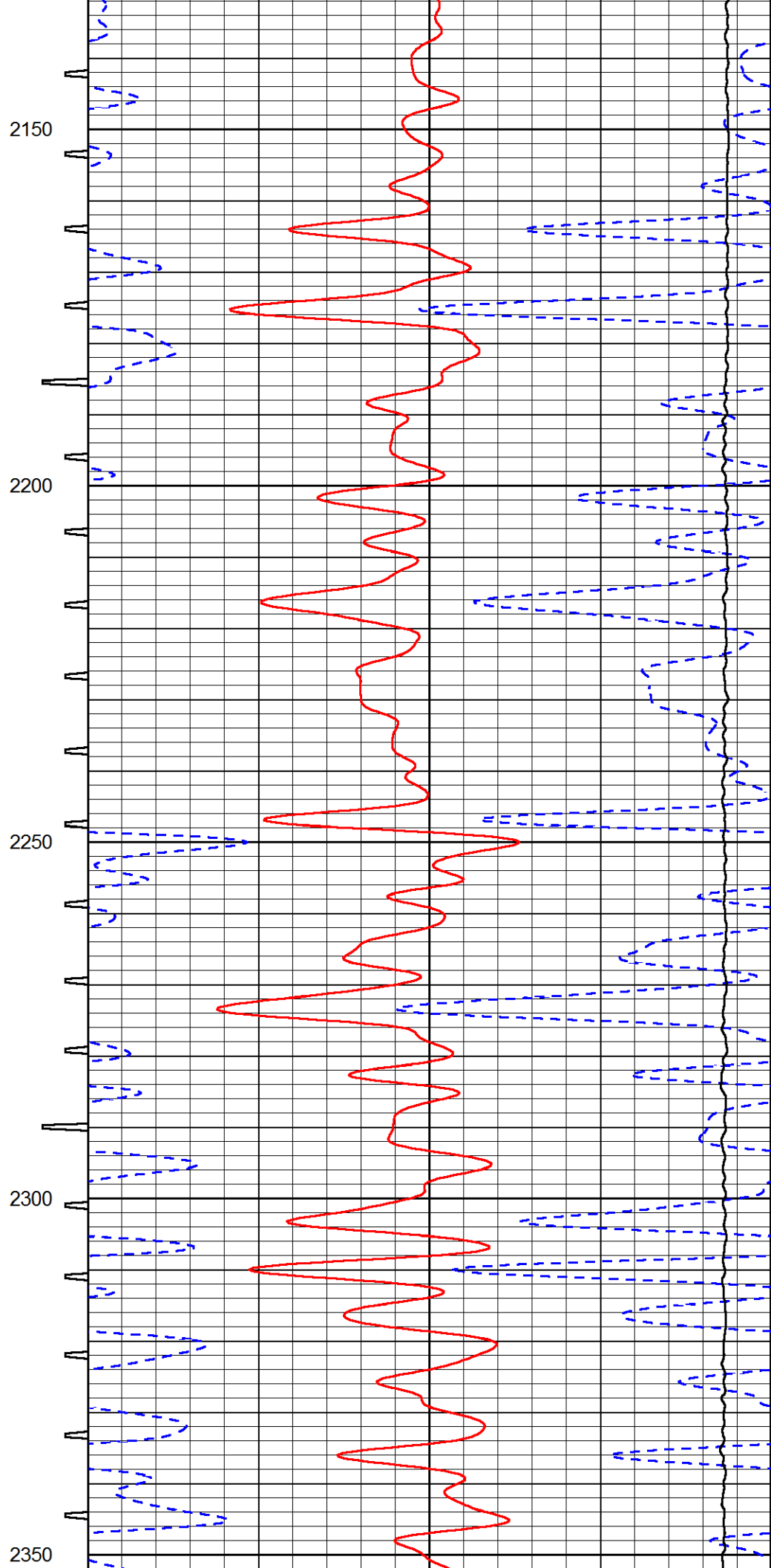
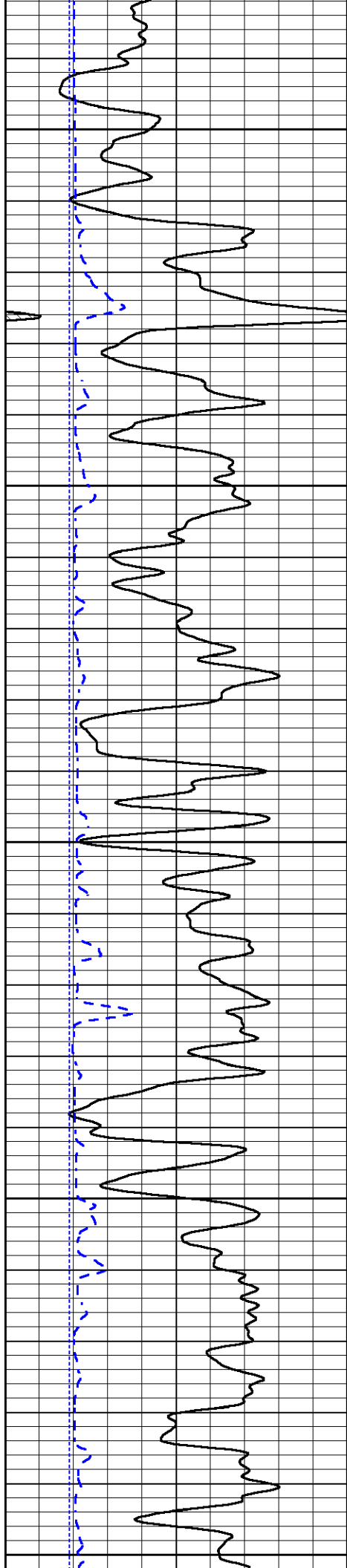


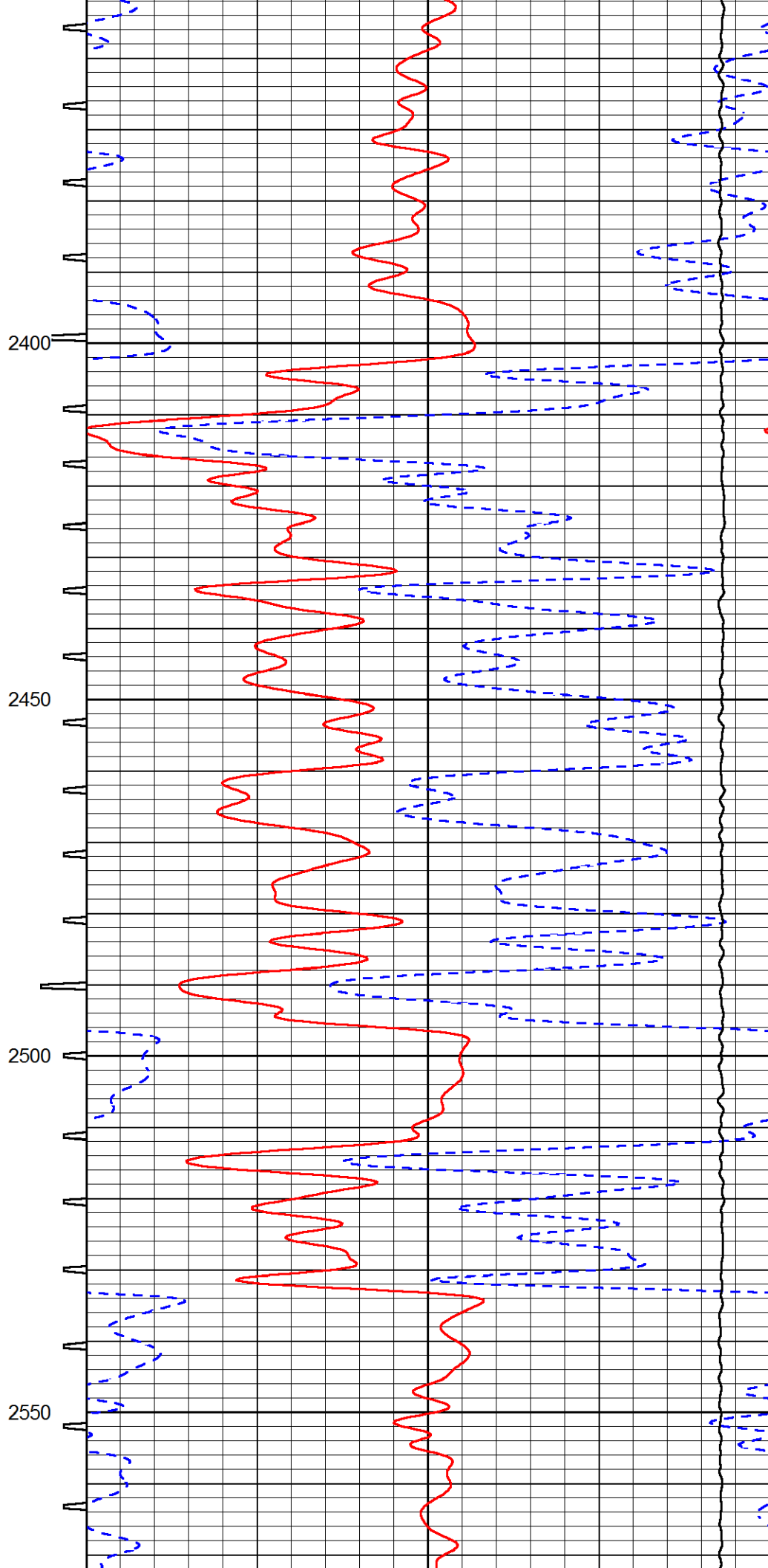
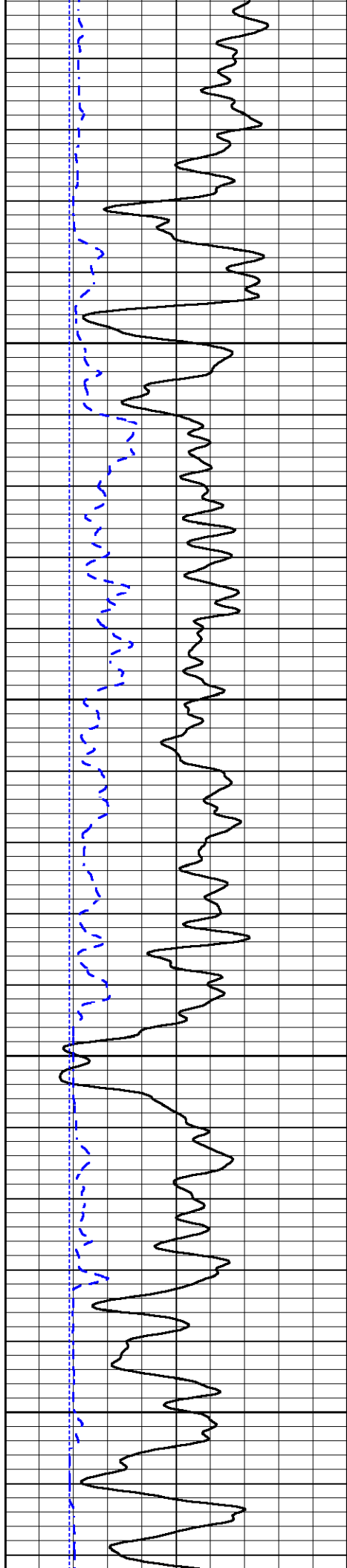


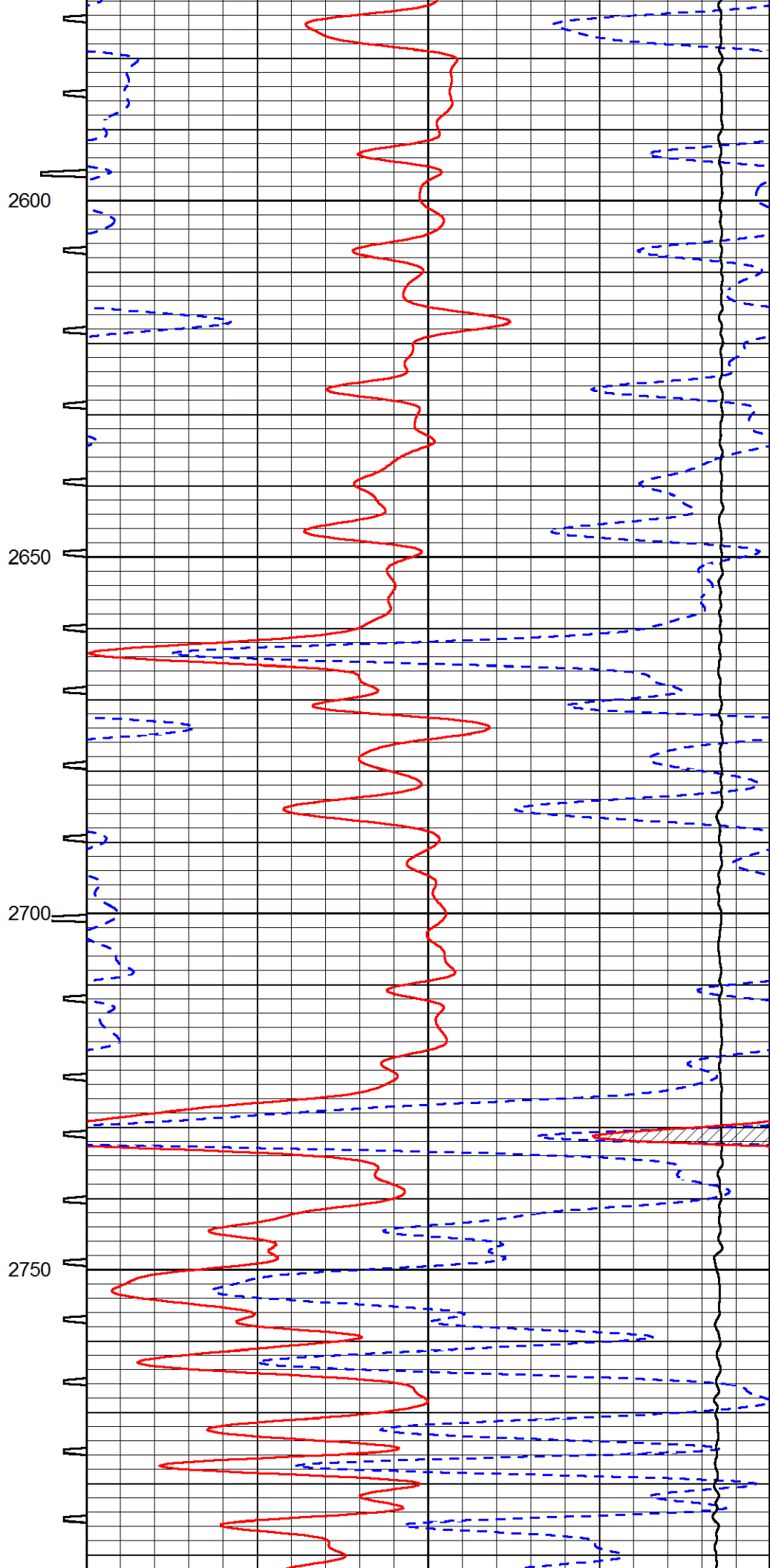
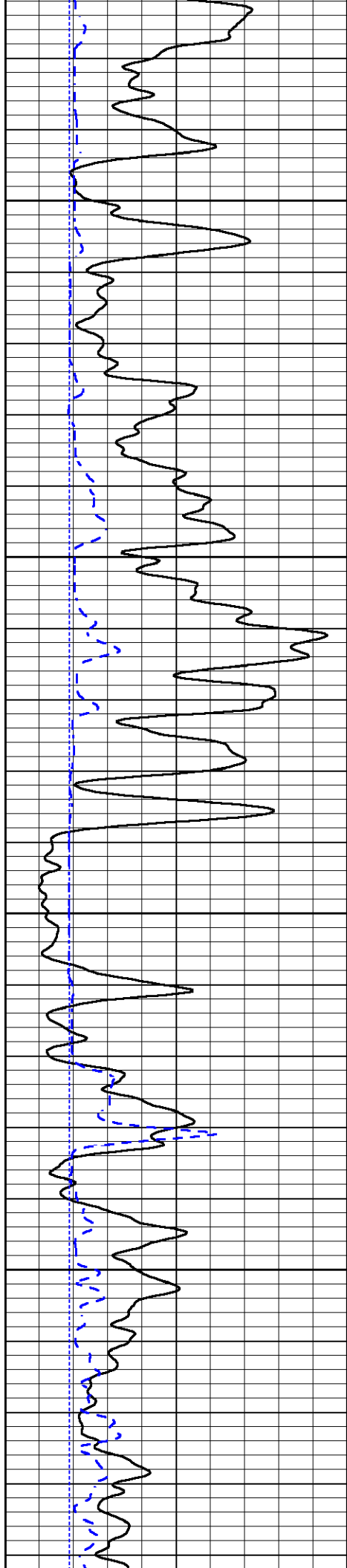


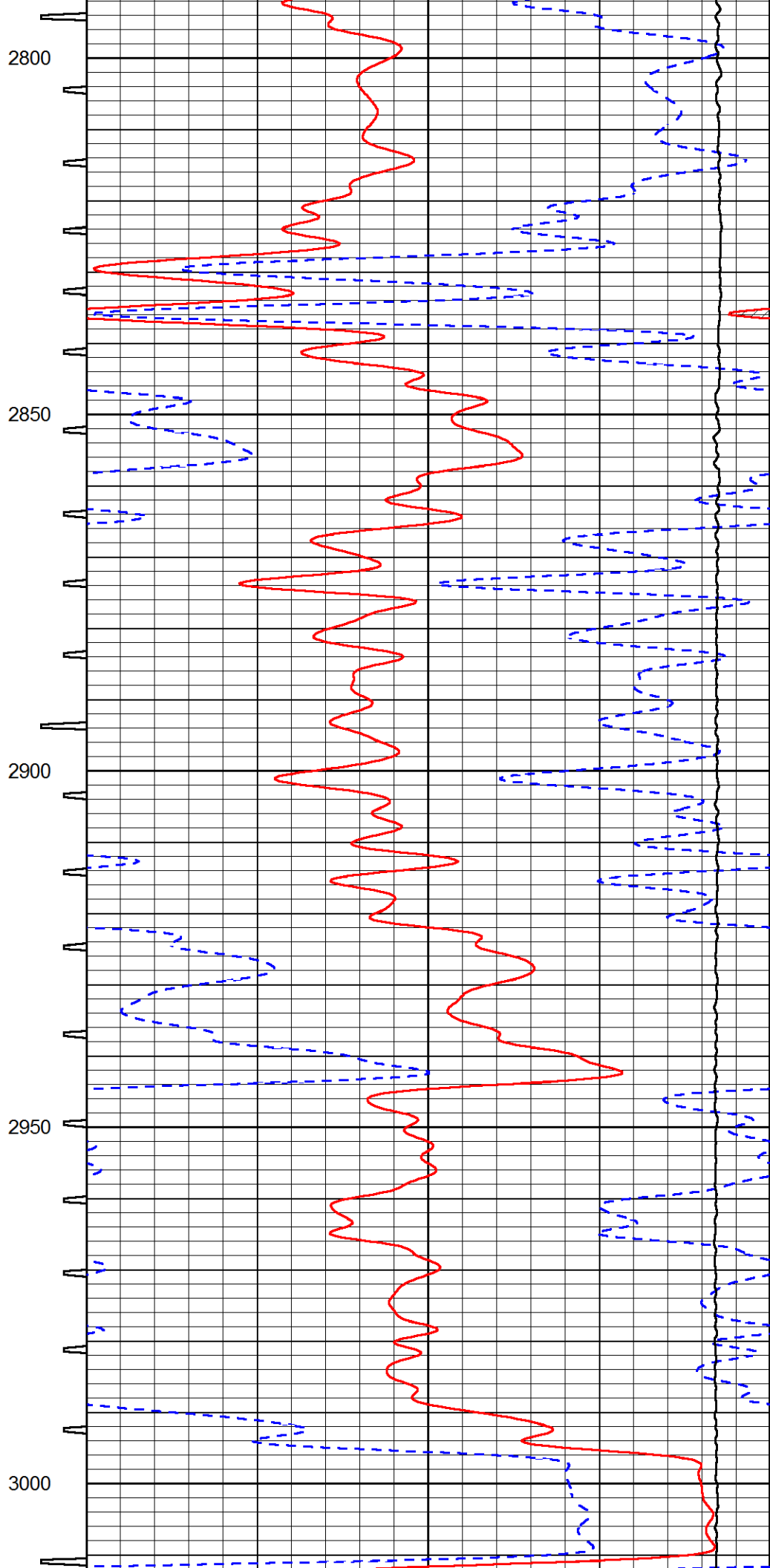
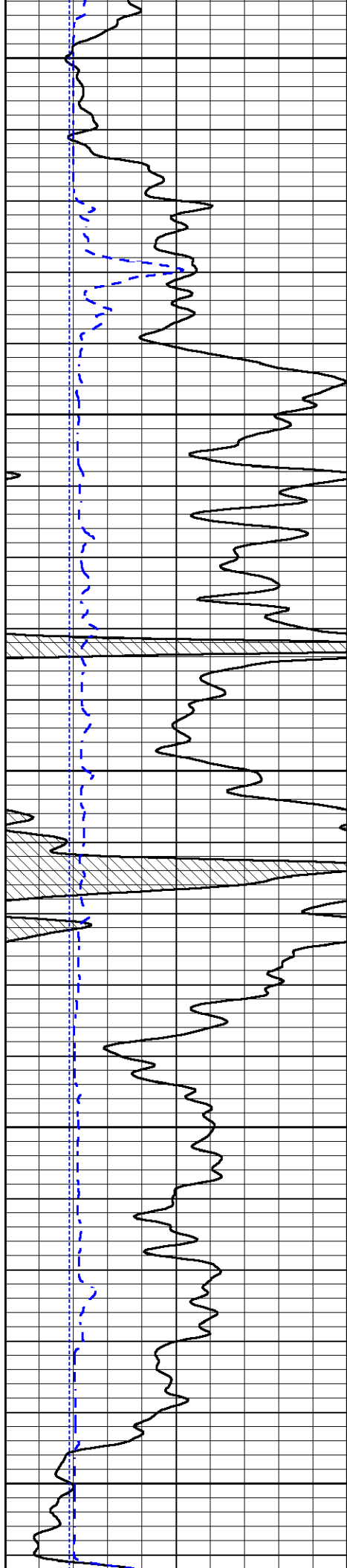


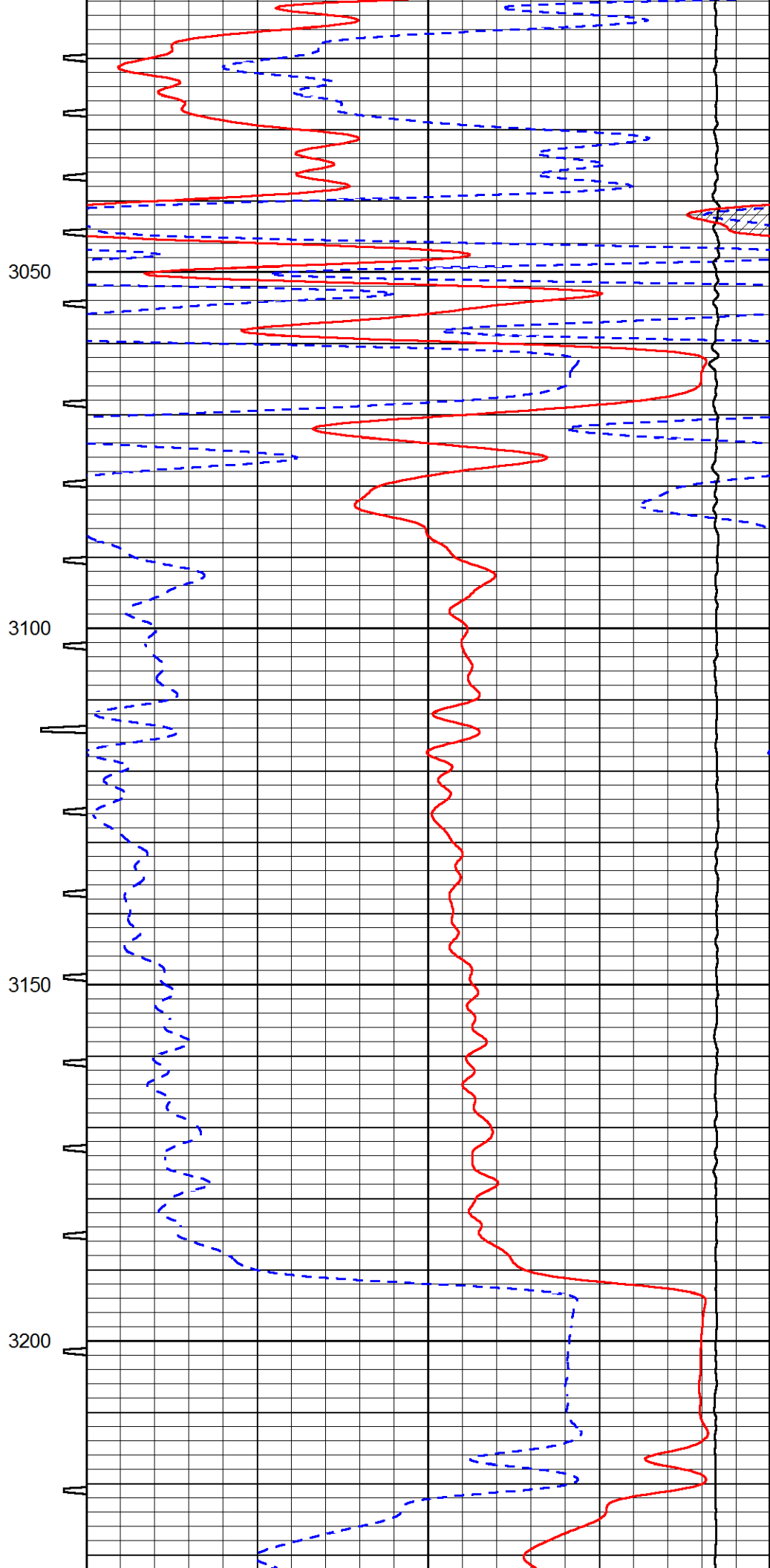
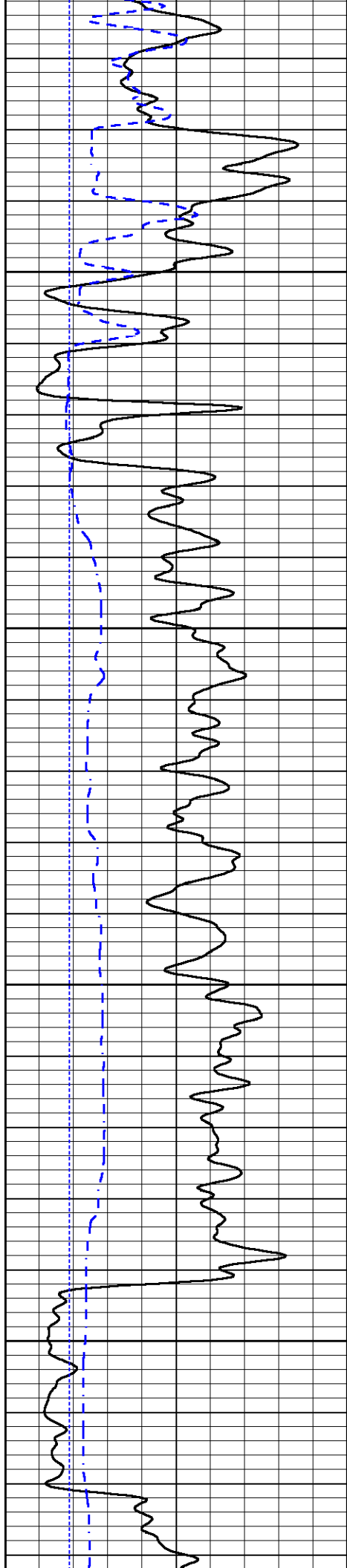


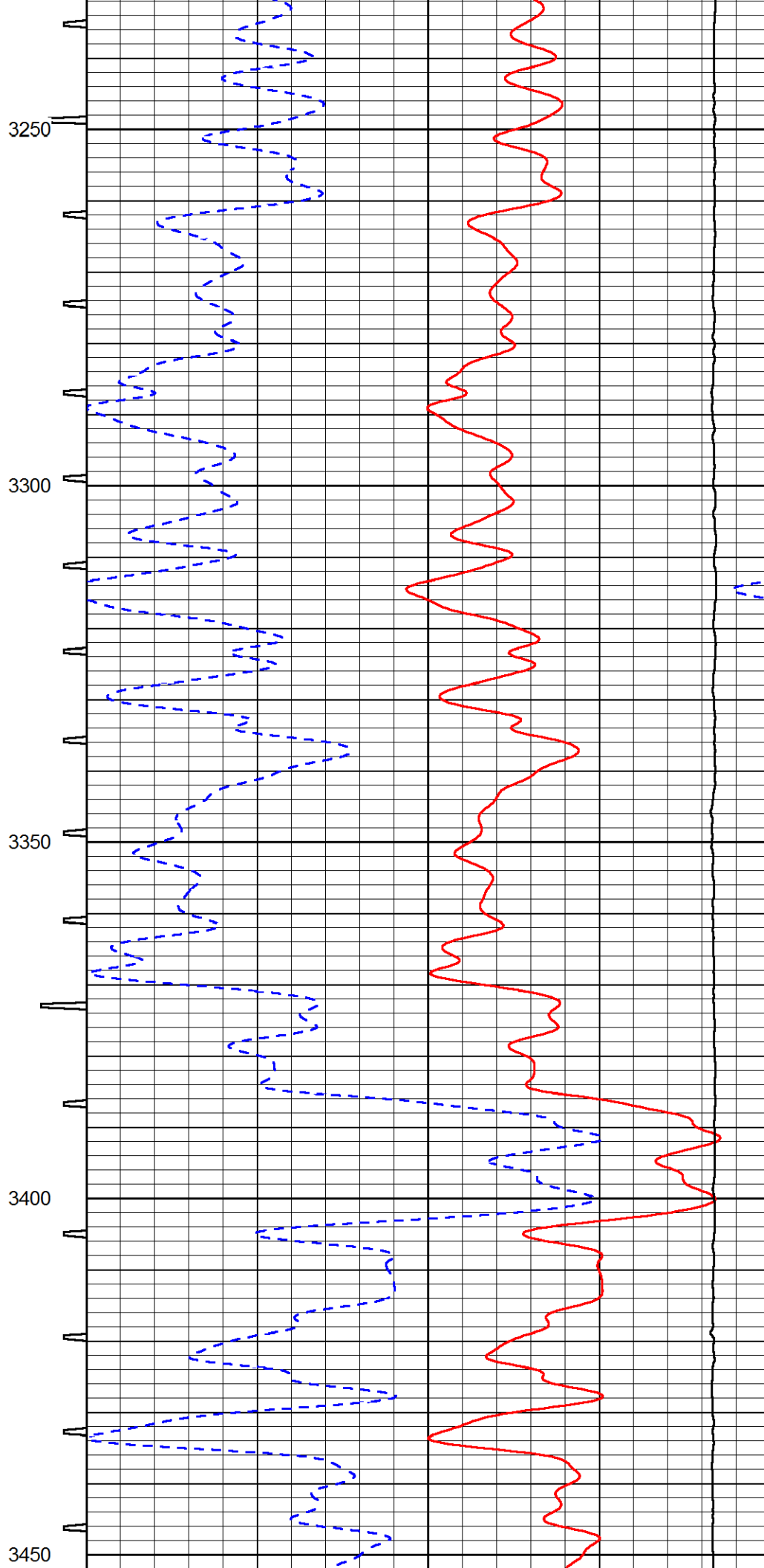
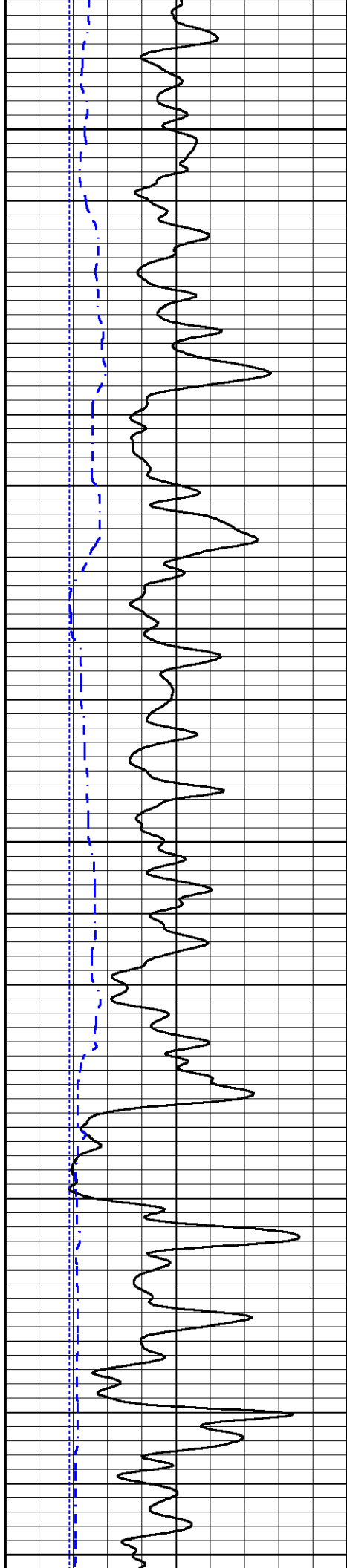


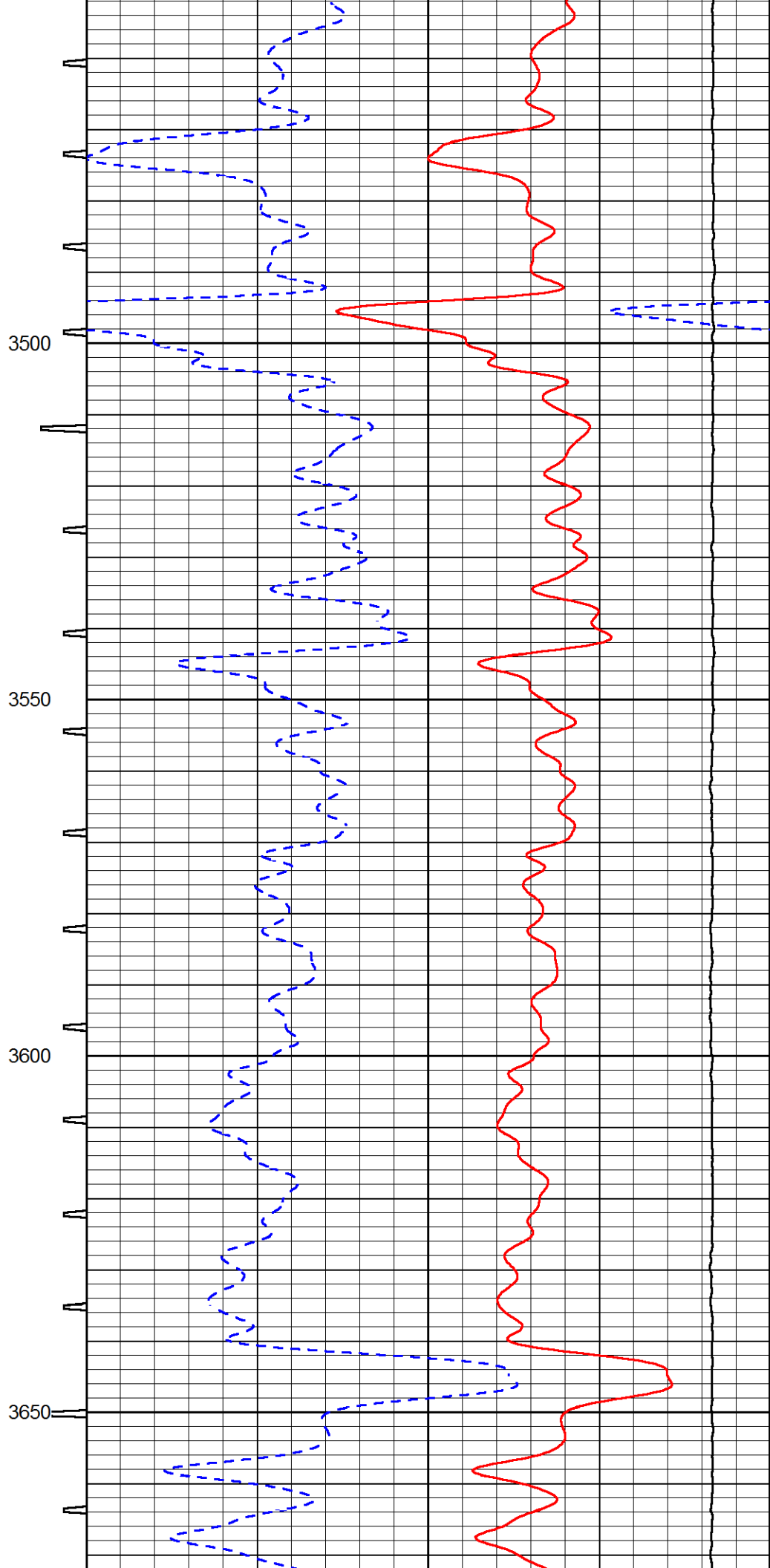
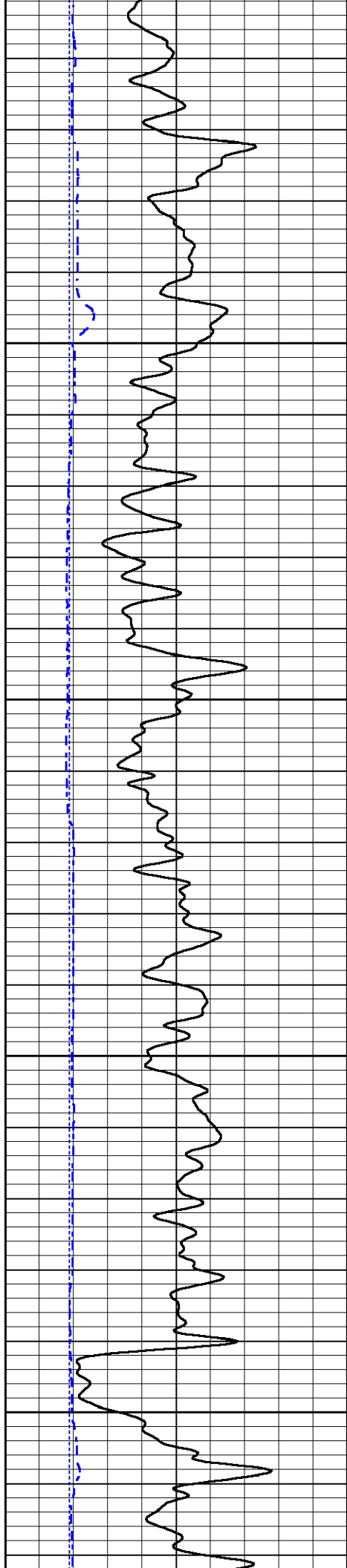


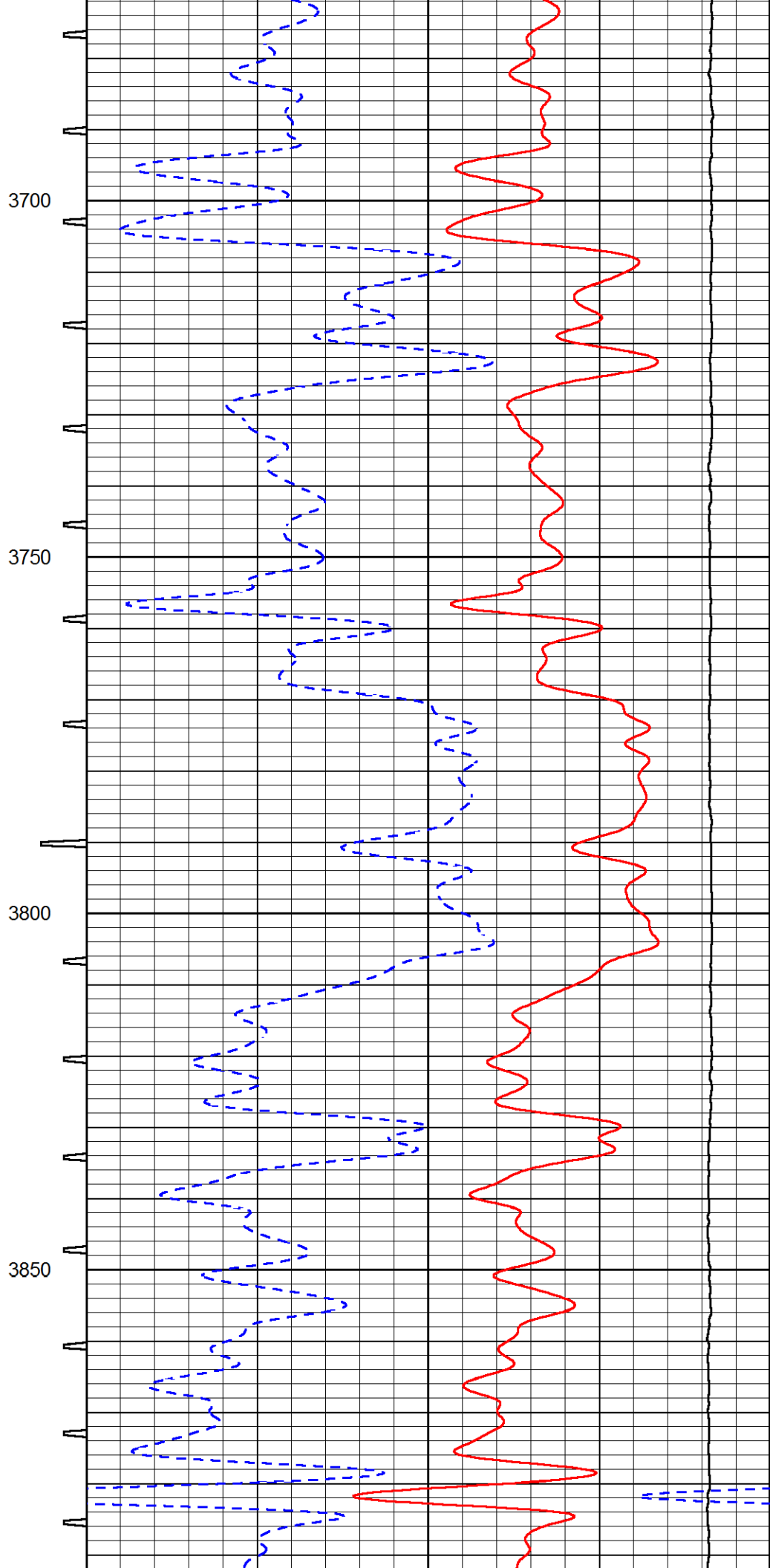
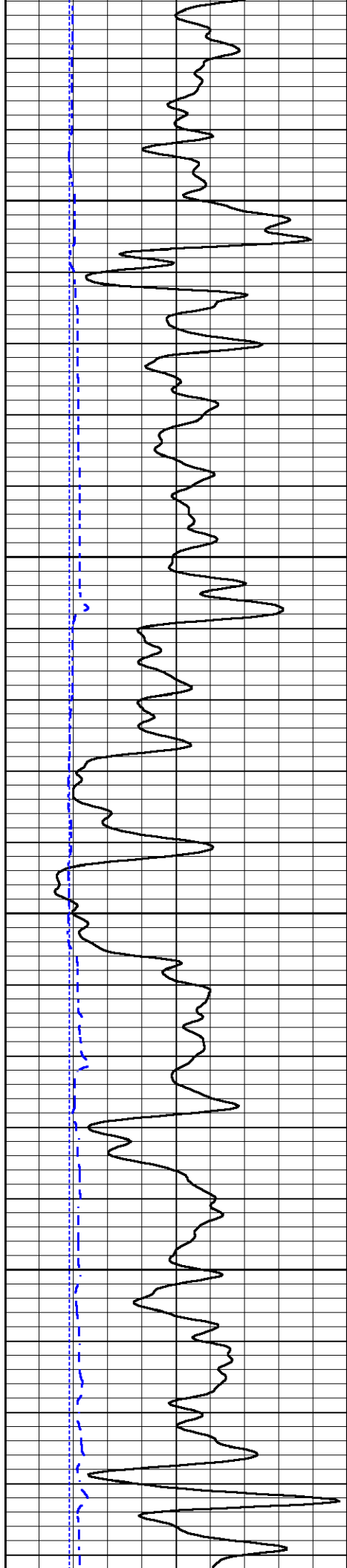


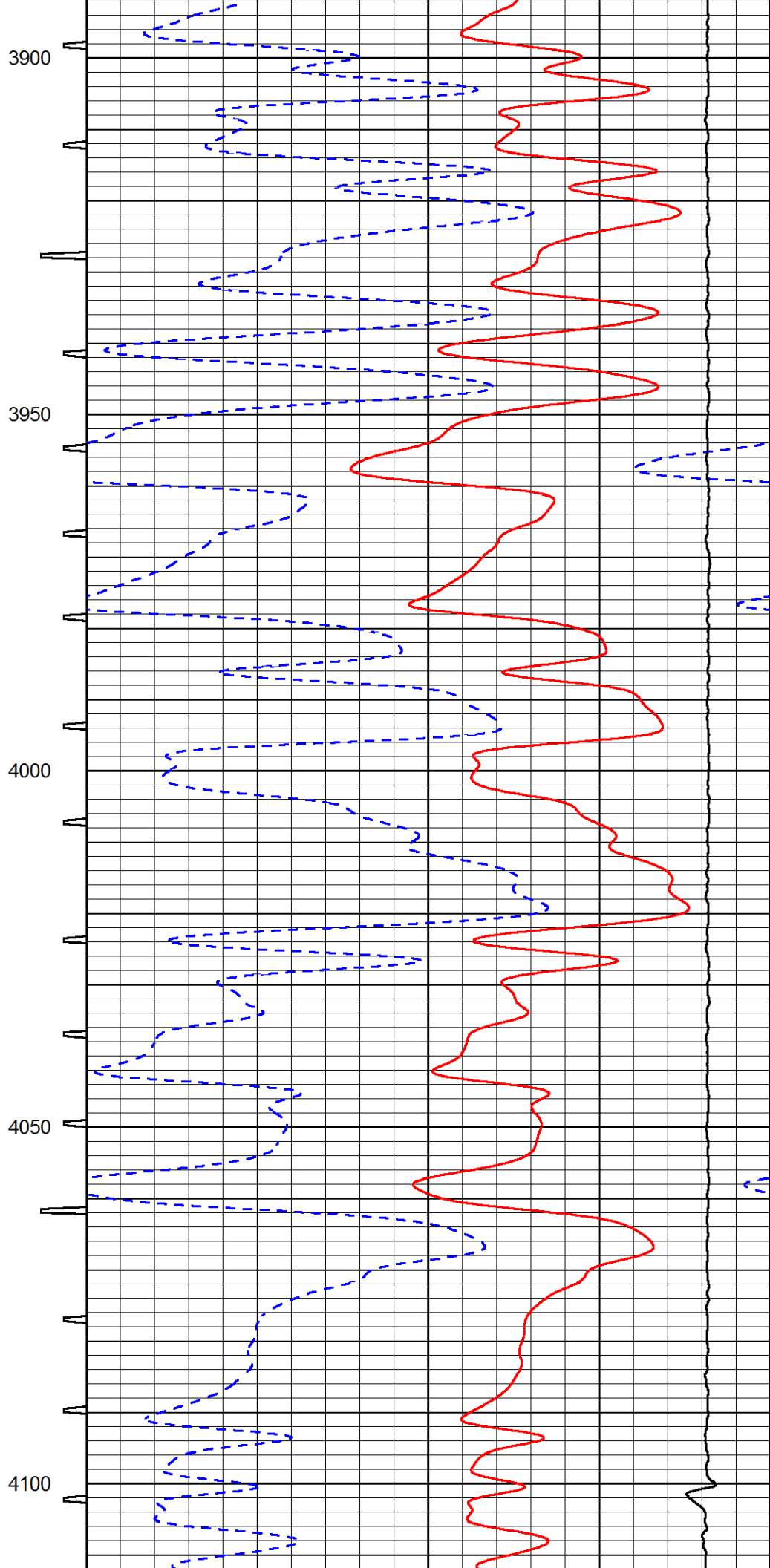
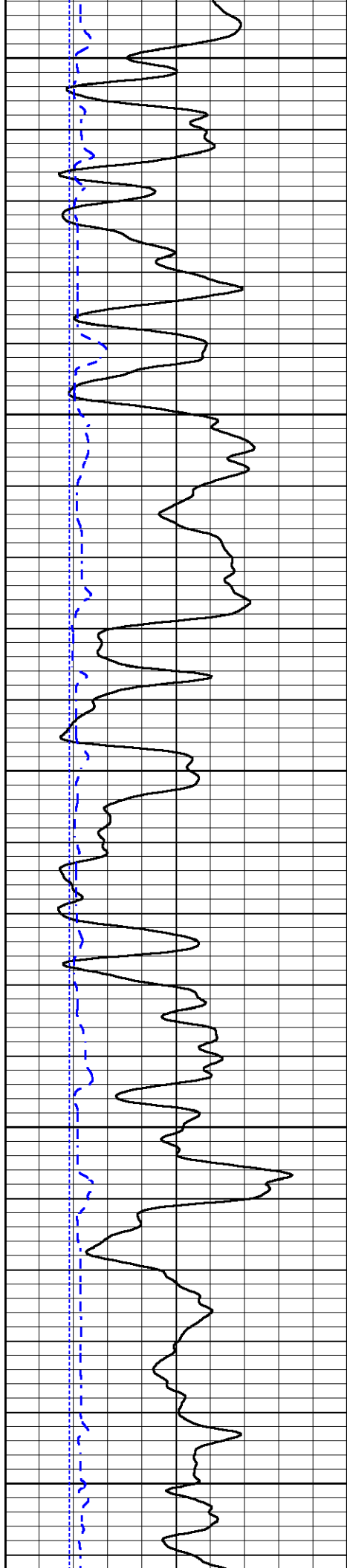


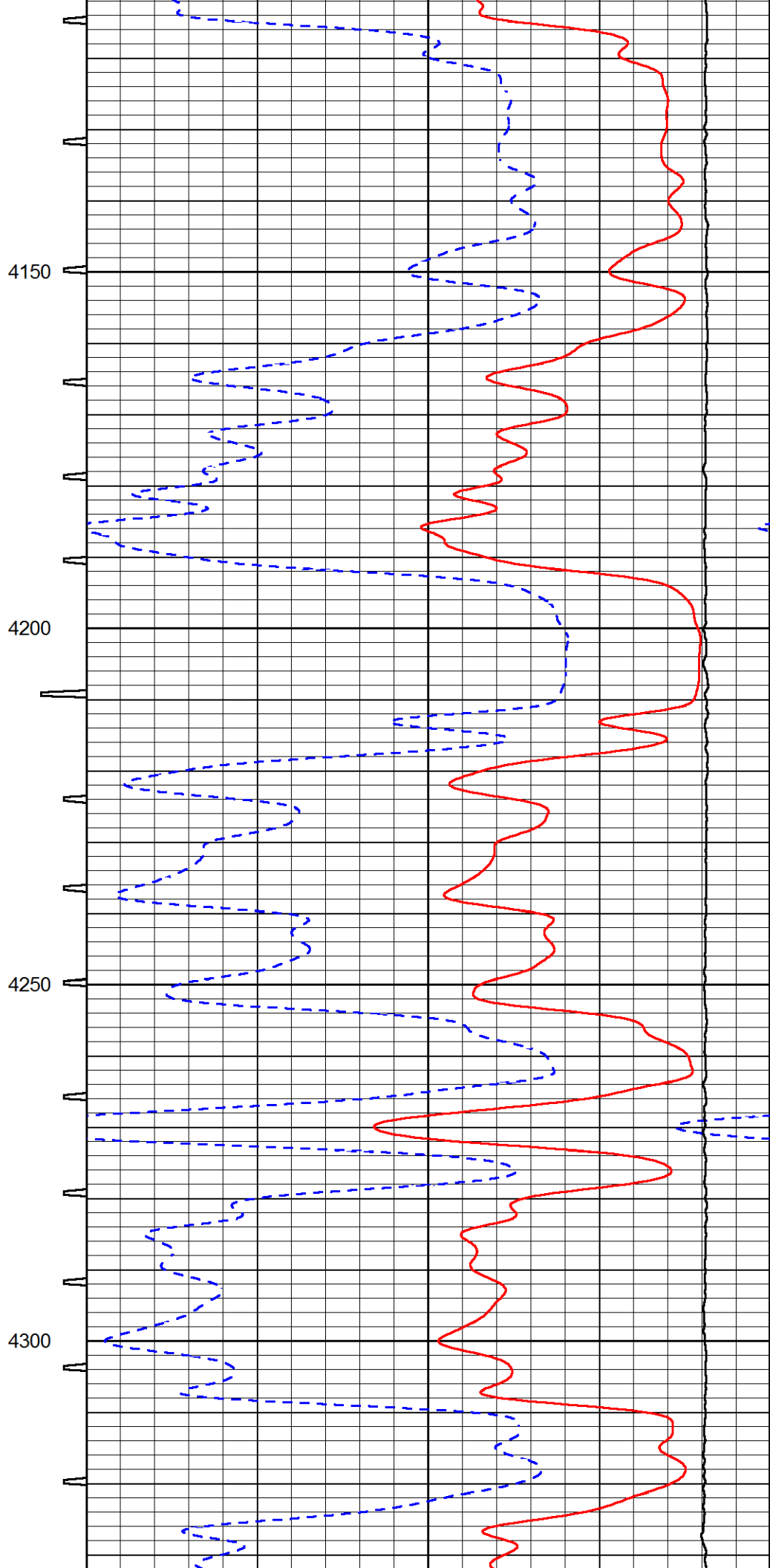
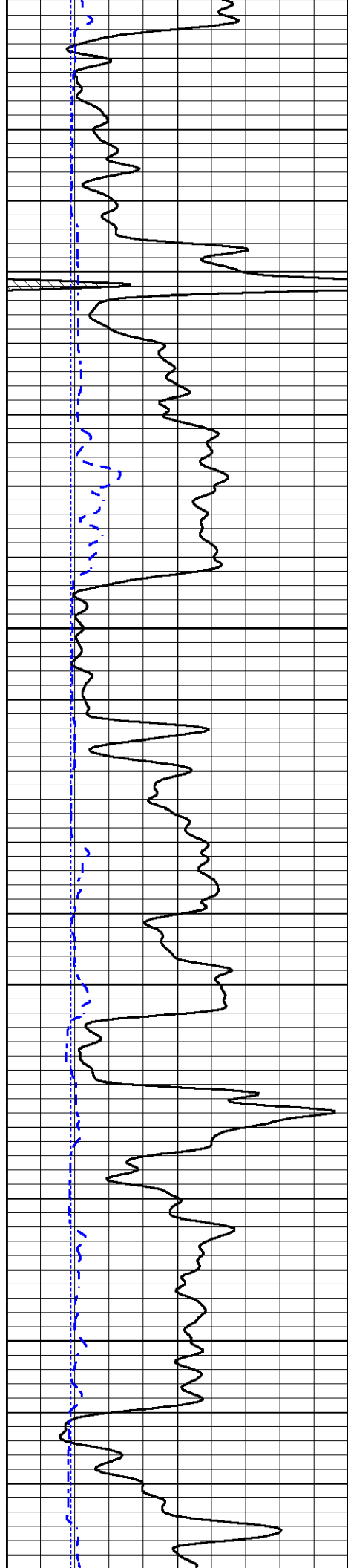


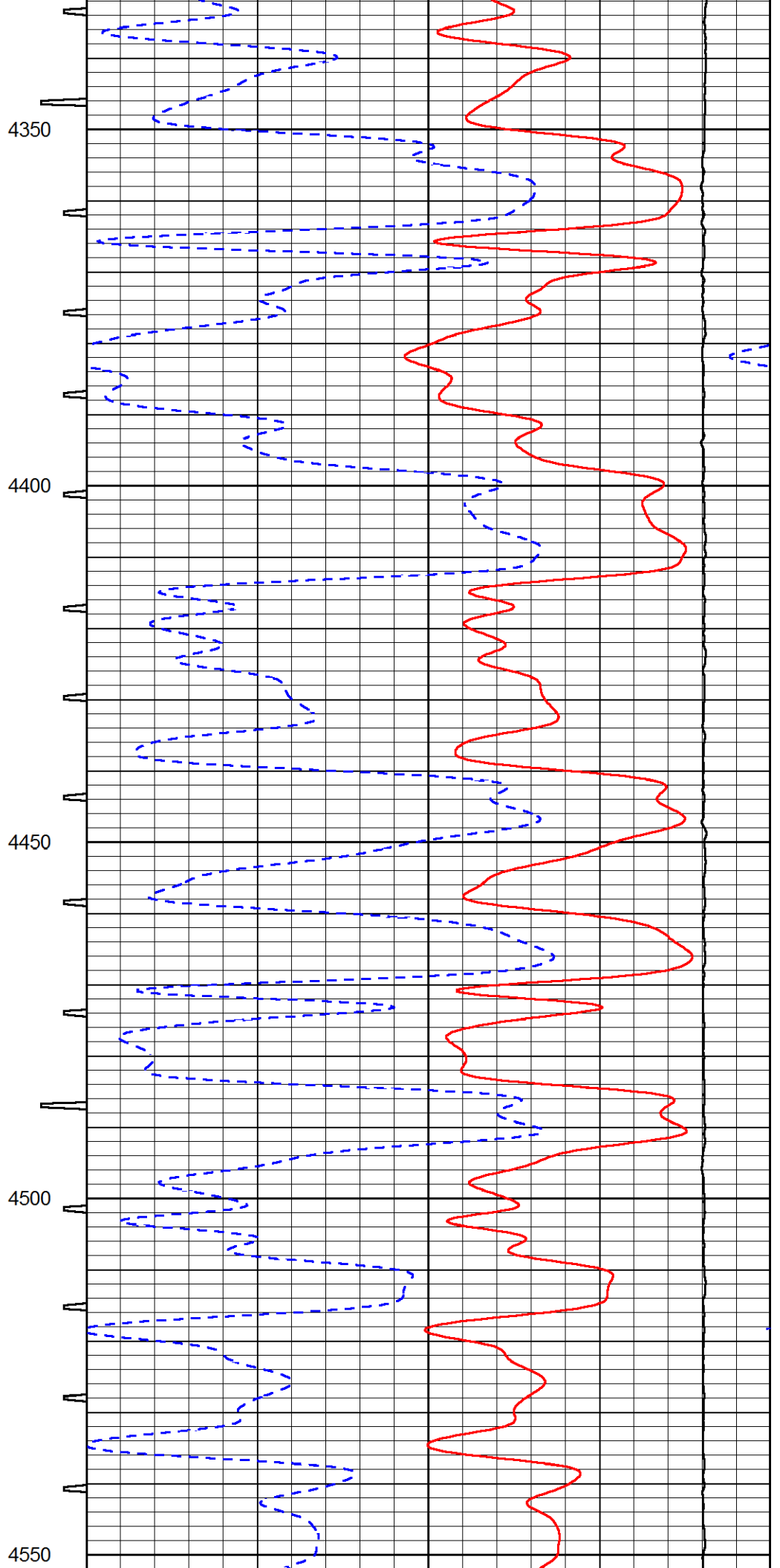
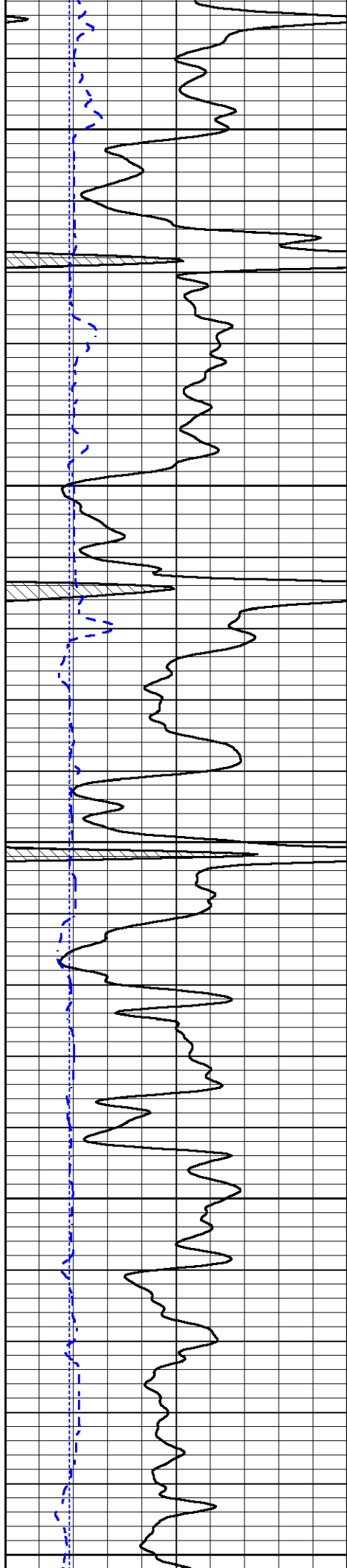


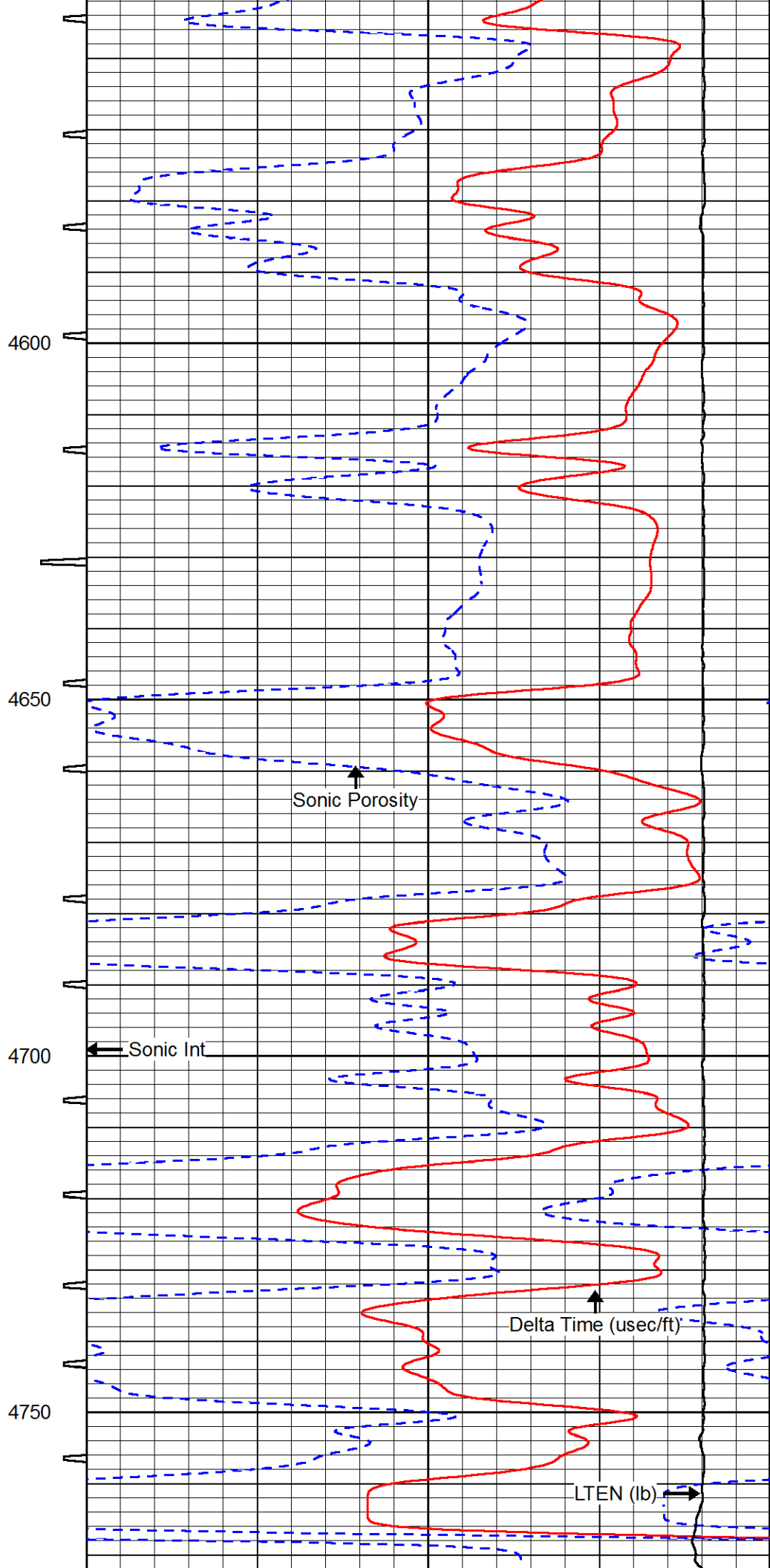
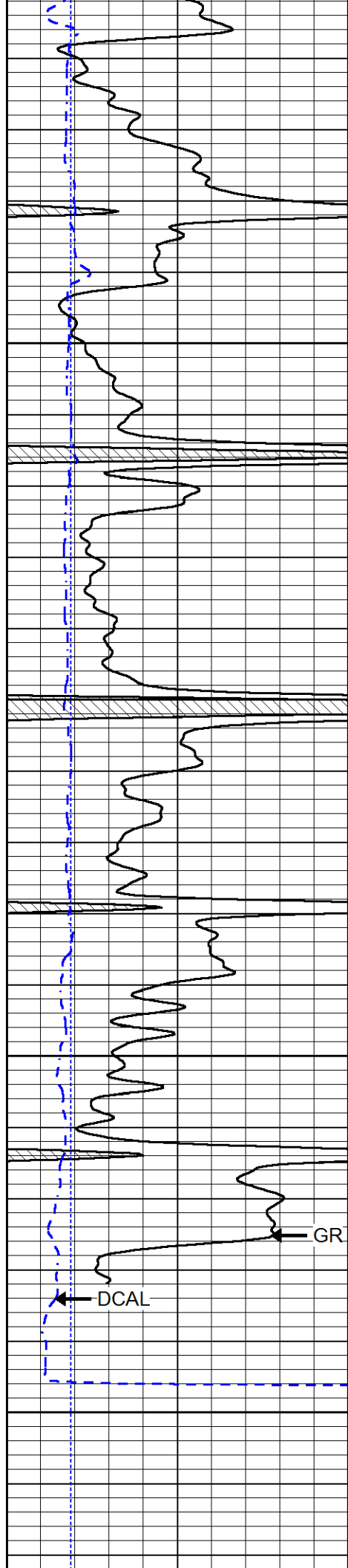












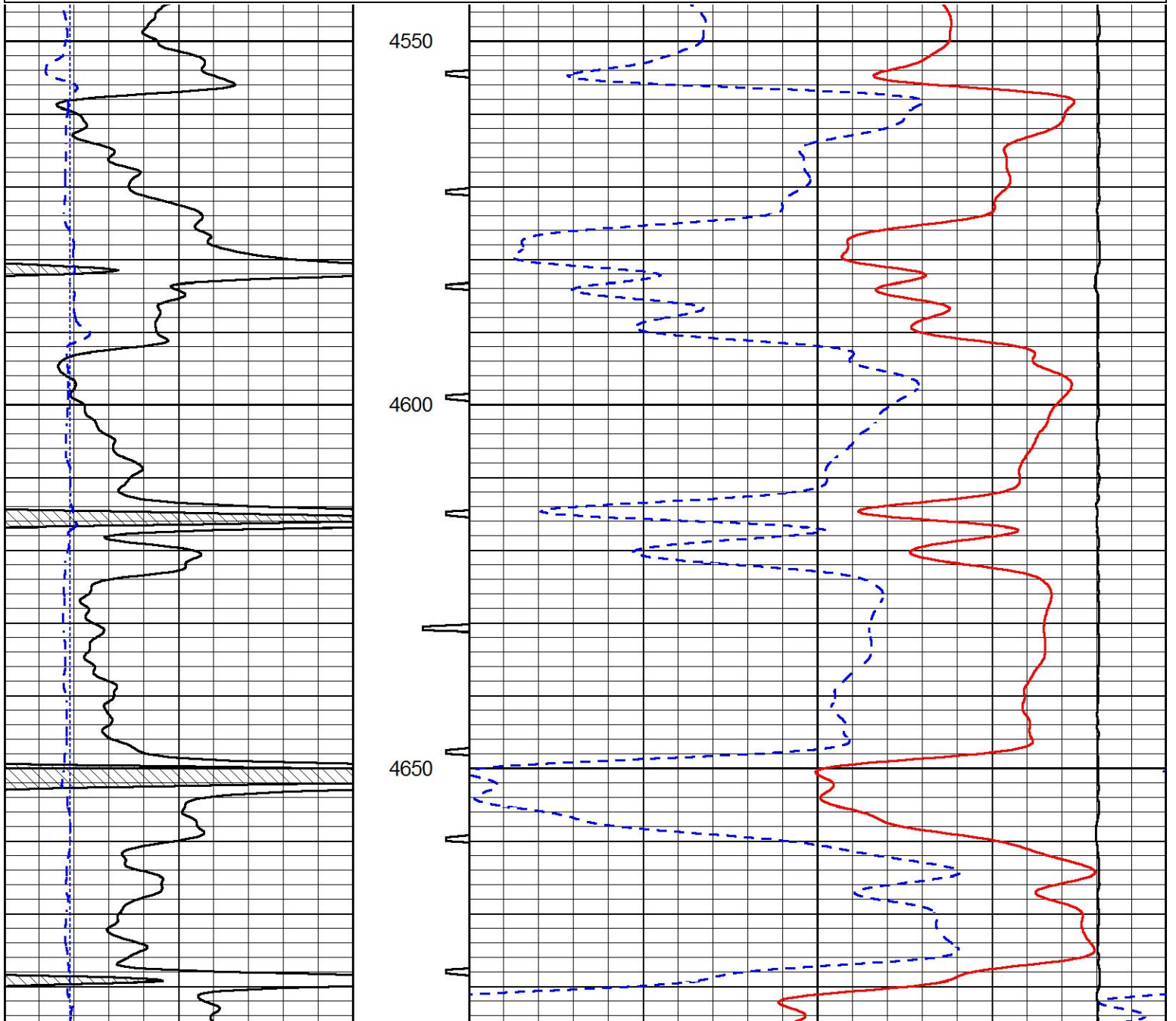
0	Gamma Ray (GAPI)	150	Sonic Int	140	Delta Time (usec/ft) (usec/ft)	40
150	GR (GAPI)	300	5 (msec) 0	30	Sonic Porosity (pu)	-10
6	DCAL (in)	16		15000	LTEN (lb) (lb)	0

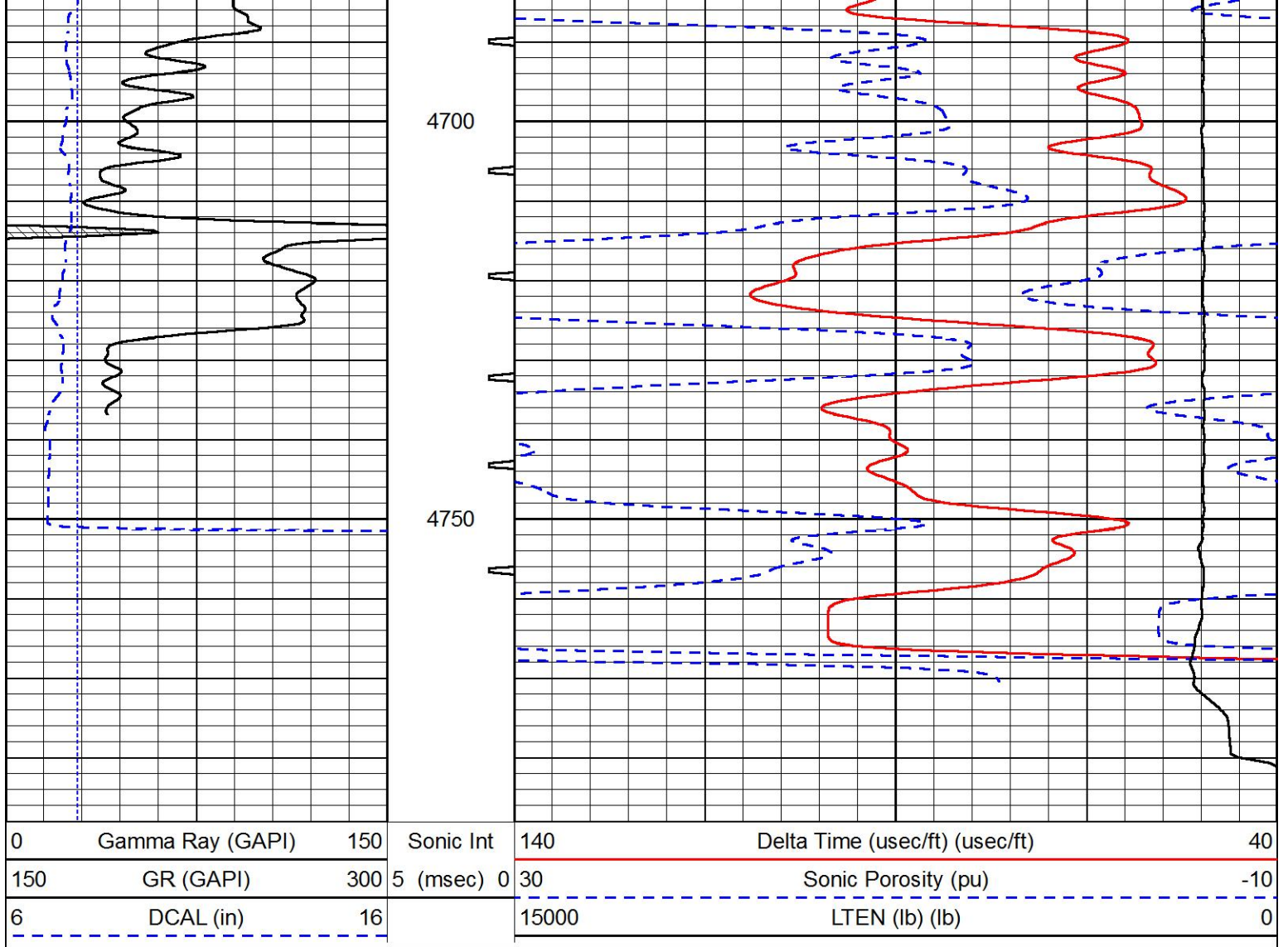


# REPEAT SECTION

Database File murfin\_jones\_a\_4\_17.db  
 Dataset Pathname stackmel/pass2.1  
 Presentation Format \_sonic  
 Dataset Creation Sat Sep 21 02:21:25 2019  
 Charted by Depth in Feet scaled 1:240

0	Gamma Ray (GAPI)	150	Sonic Int	140	Delta Time (usec/ft) (usec/ft)	40
150	GR (GAPI)	300	5 (msec) 0	30	Sonic Porosity (pu)	-10
6	DCAL (in)	16		15000	LTEN (lb) (lb)	0





Company MURFIN DRILLING CO., INC.  
 Well JONES A #4-17  
 Field JONES CANYON SOUTH  
 County CHEYENNE  
 State KANSAS