

SONIC
LOG



Company M&M EXPLORATION, INC.
Well GUTHRIE FARMS #1
Field
County HARVEY State KANSAS

Location: API #: 15-079-20719-0000
1090' FNL & 330' FWL
SEC 9 TWP 22S RGE 2E
Permanent Datum GROUND LEVEL Elevation 1474
Log Measured From KELLY BUSHING 12' A.G.L
Drilling Measured From KELLY BUSHING
Other Services CDL/CNL/PE DIL/MEL
Elevation K.B. 1486 D.F. 1484 G.L. 1474

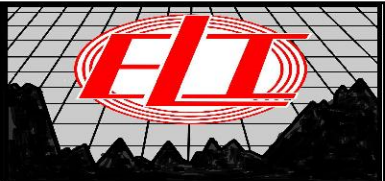
Date	10/30/19
Run Number	TWO
Depth Driller	3300
Depth Logger	3300
Bottom Logged Interval	3290
Top Log Interval	200
Casing Driller	8 5/8" @ 212'
Casing Logger	212'
Bit Size	7 7/8
Type Fluid in Hole	CHEMICAL MUD
Density / Viscosity	9.1/60
pH / Fluid Loss	10.0/8.0
Source of Sample	FLOWLINE
Rm @ Meas. Temp	1.10 @ 62F
Rmf @ Meas. Temp	0.82 @ 62F
Rmc @ Meas. Temp	1.32 @ 62F
Source of Rmf / Rmc	MEASUREMENT
Rm @ BHT	0.62 @ 110F
Time Circulation Stopped	2 HOURS
Time Logger on Bottom	////
Maximum Recorded Temperature	110F
Equipment Number	3802
Location	HAYS, KANSAS
Recorded By	JASON CAPPELLUCCI
Witnessed By	WYATT URBAN

<<< Fold Here >>>

All interpretations are opinions based on inferences from electrical or other measurements and we cannot and do not guarantee the accuracy or correctness of any interpretation, and we shall not, except in the case of gross or willful negligence on our part, be liable or responsible for any loss, costs, damages, or expenses incurred or sustained by anyone resulting from any interpretation made by any of our officers, agents or employees. These interpretations are also subject to our general terms and conditions set out in our current Price Schedule.

Comments

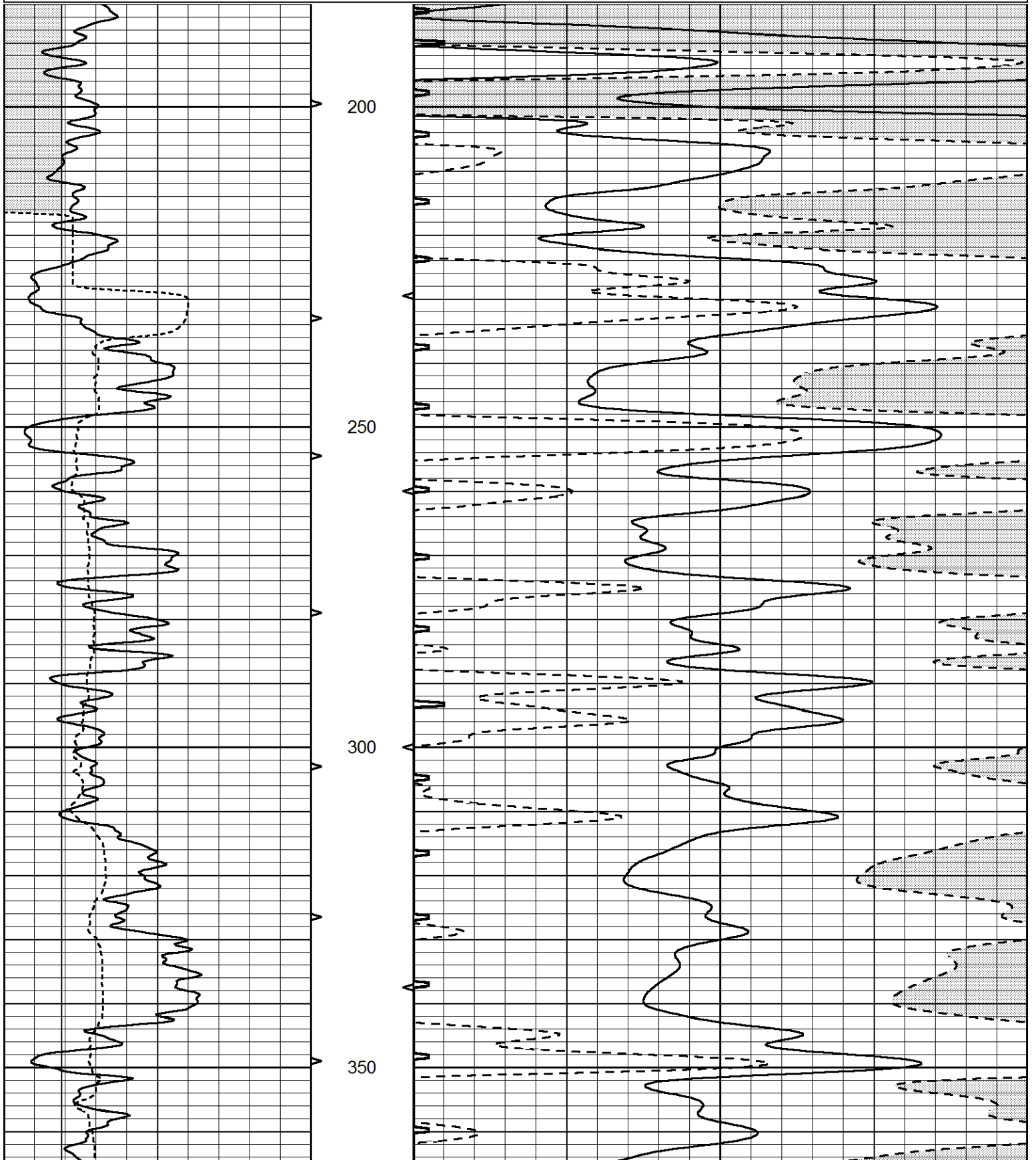
THANK YOU FOR USING ELI WIRELINE SERVICES, HAYS, KS. (785) 628-6395
DIRECTIONS
RUSSELL KS, SOUTH TO INTERSECTION OF HWY 281 & HWY 4 - 3 SOUTH ON BOYD
BLKTOP - 2 WEST - 1/4 SOUTH - EAST INTO

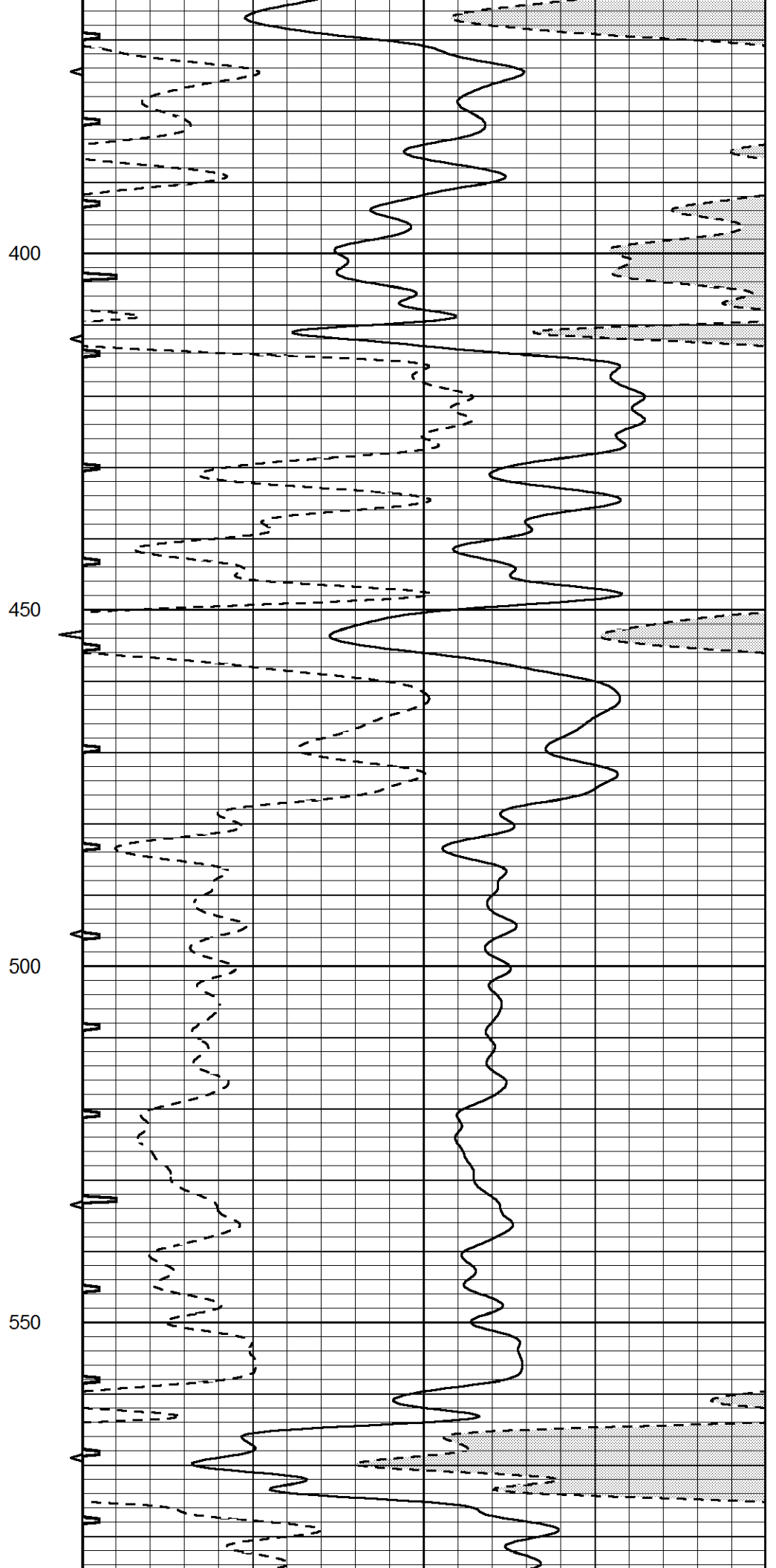
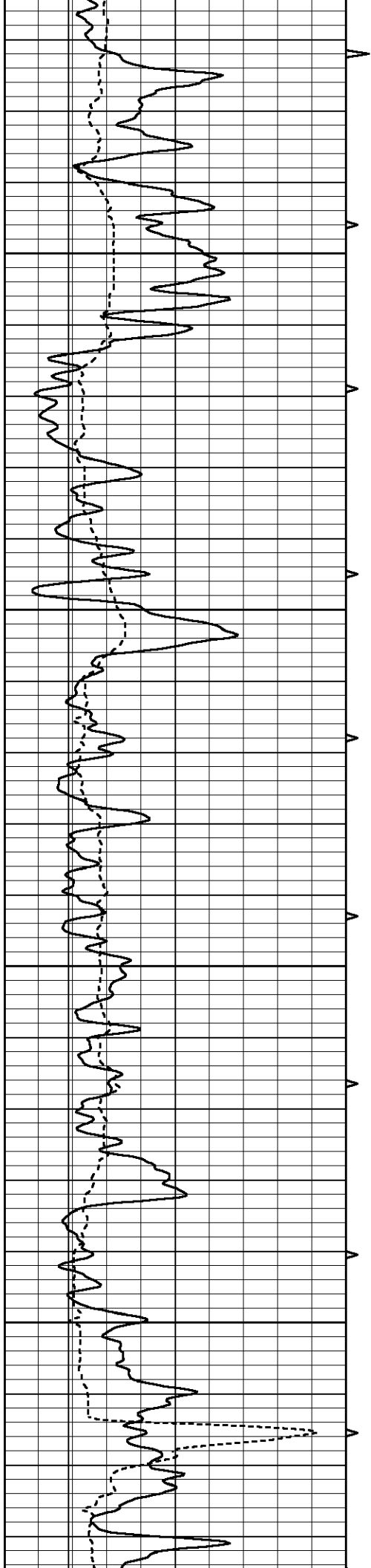


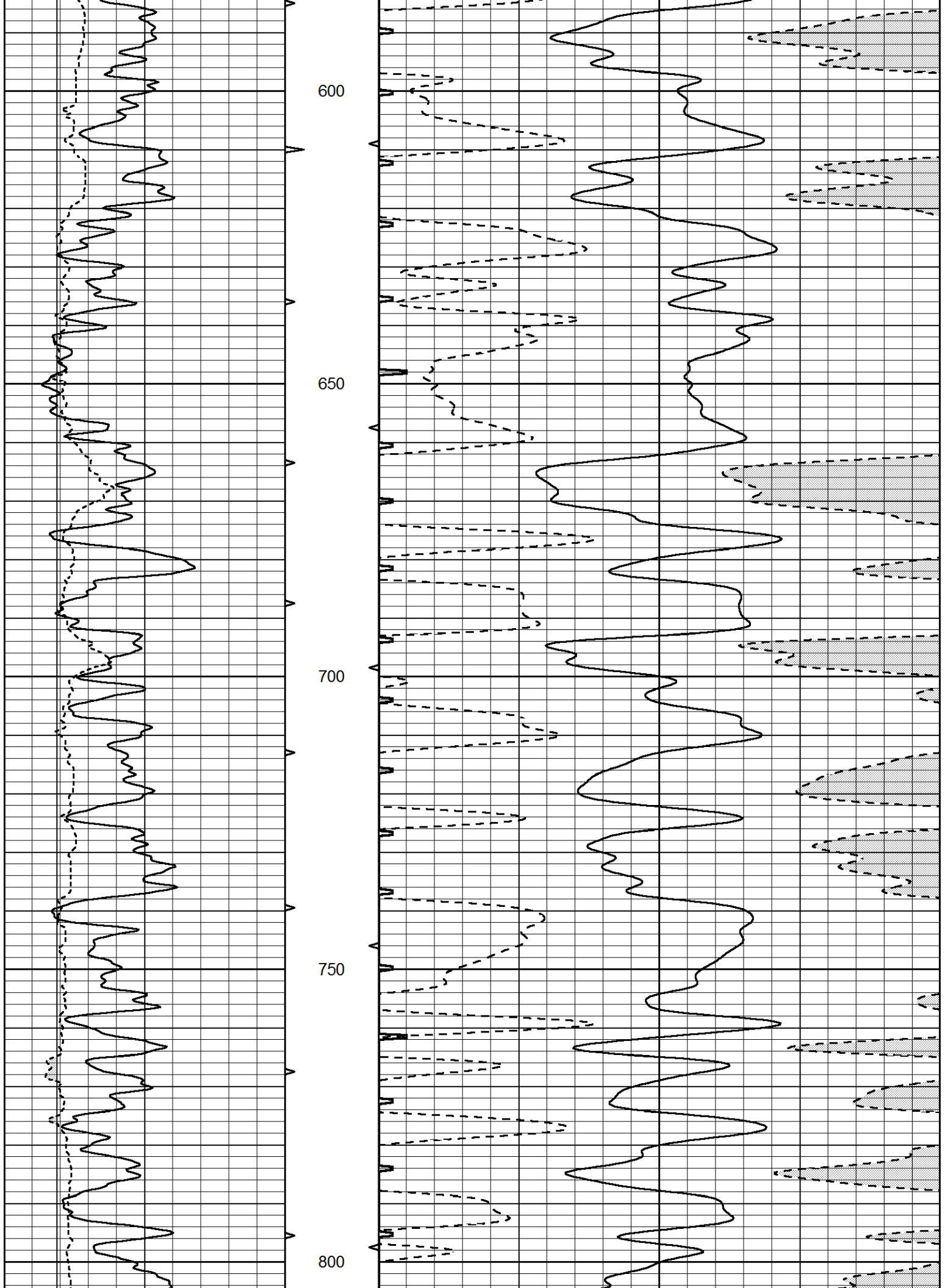
MAIN SECTION

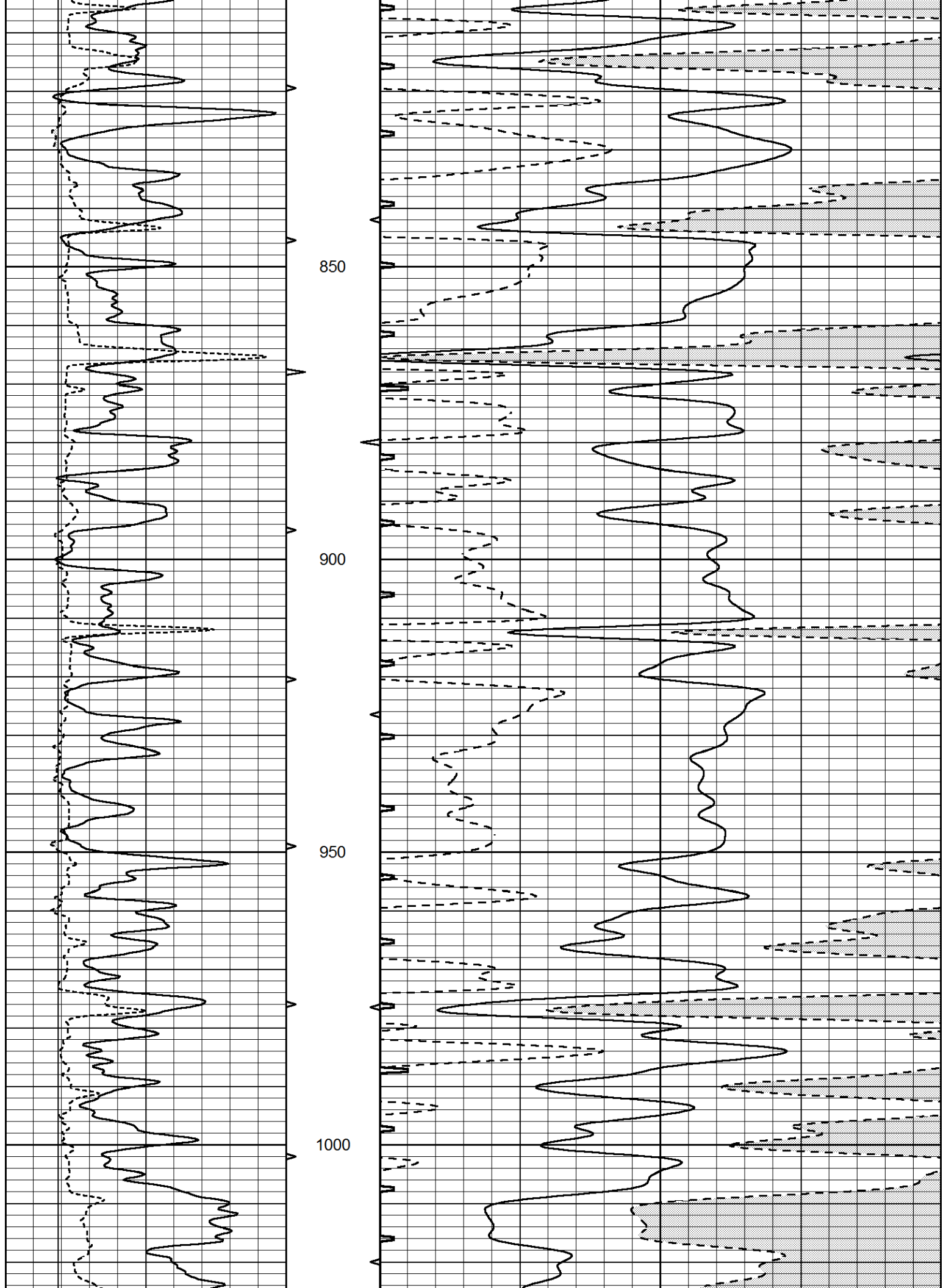
Database File 4428pe.db
 Dataset Pathname pass6
 Presentation Format _slt
 Dataset Creation Wed Oct 30 11:02:14 2019
 Charted by Depth in Feet scaled 1:240

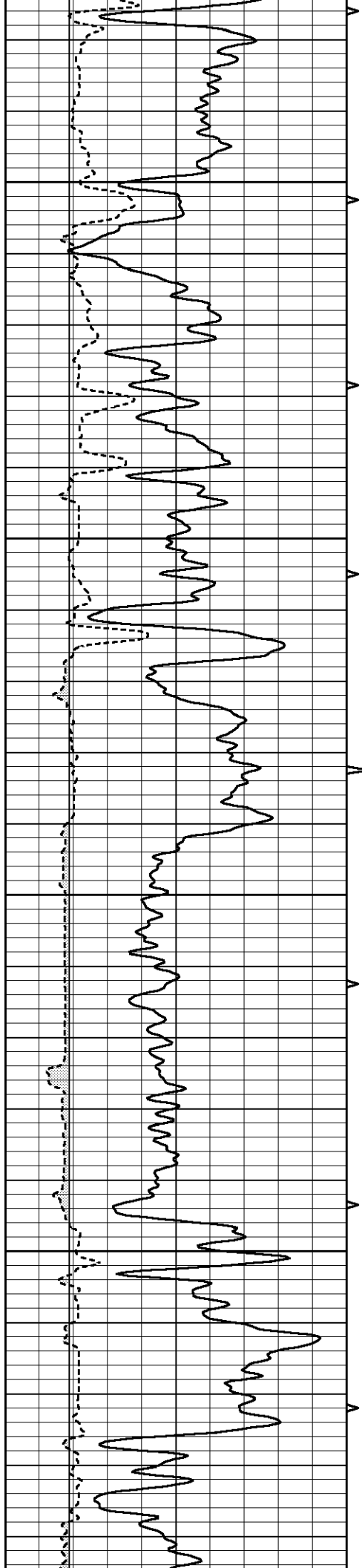
0	GAMMA RAY (GAPI)	150	ABHV	140	DELTA TIME (usec/ft)	40	
6	CALIPER (in)	16	10 (ft3)	0	30	SONIC POROSITY (pu)	-10
			TBHV	0	ITT (msec)	20	
			0 (ft3)	10			









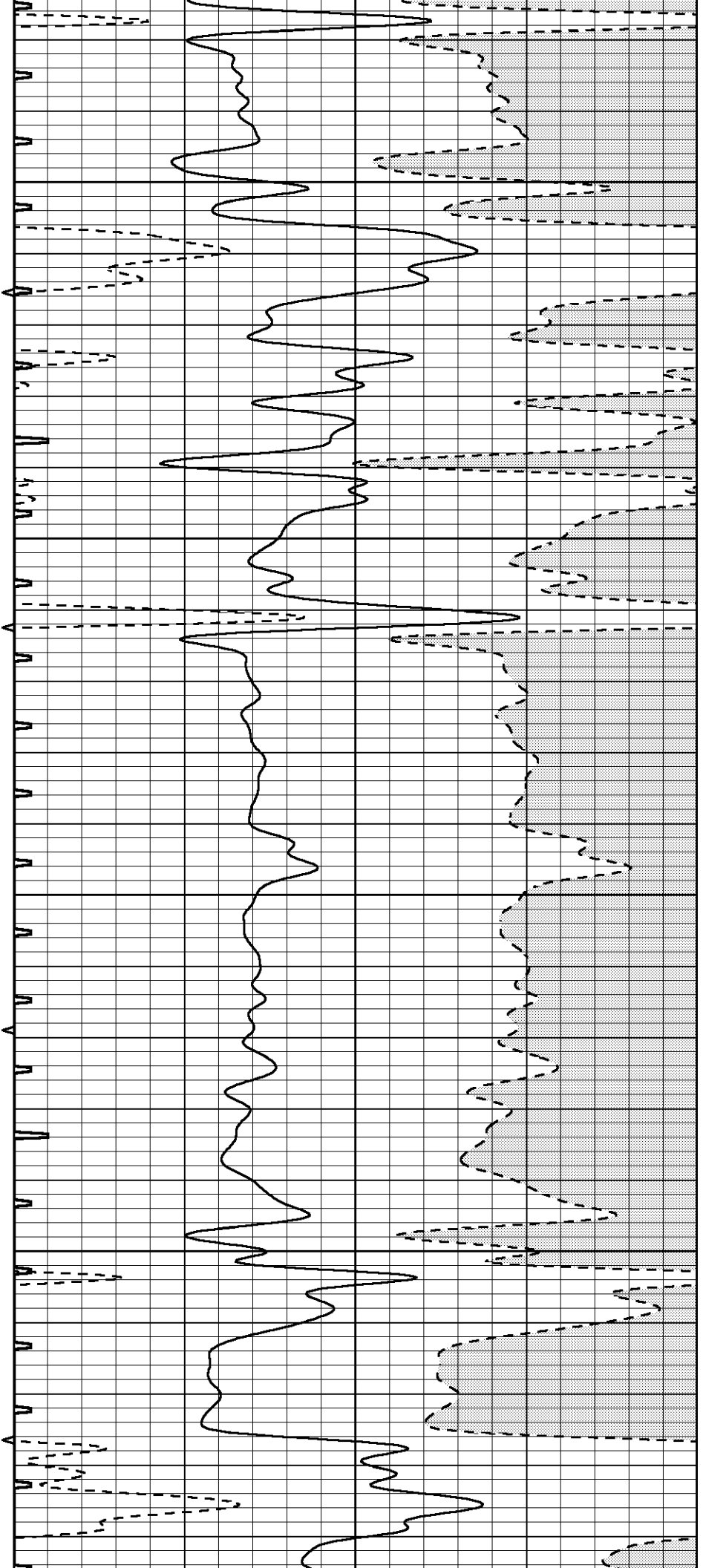


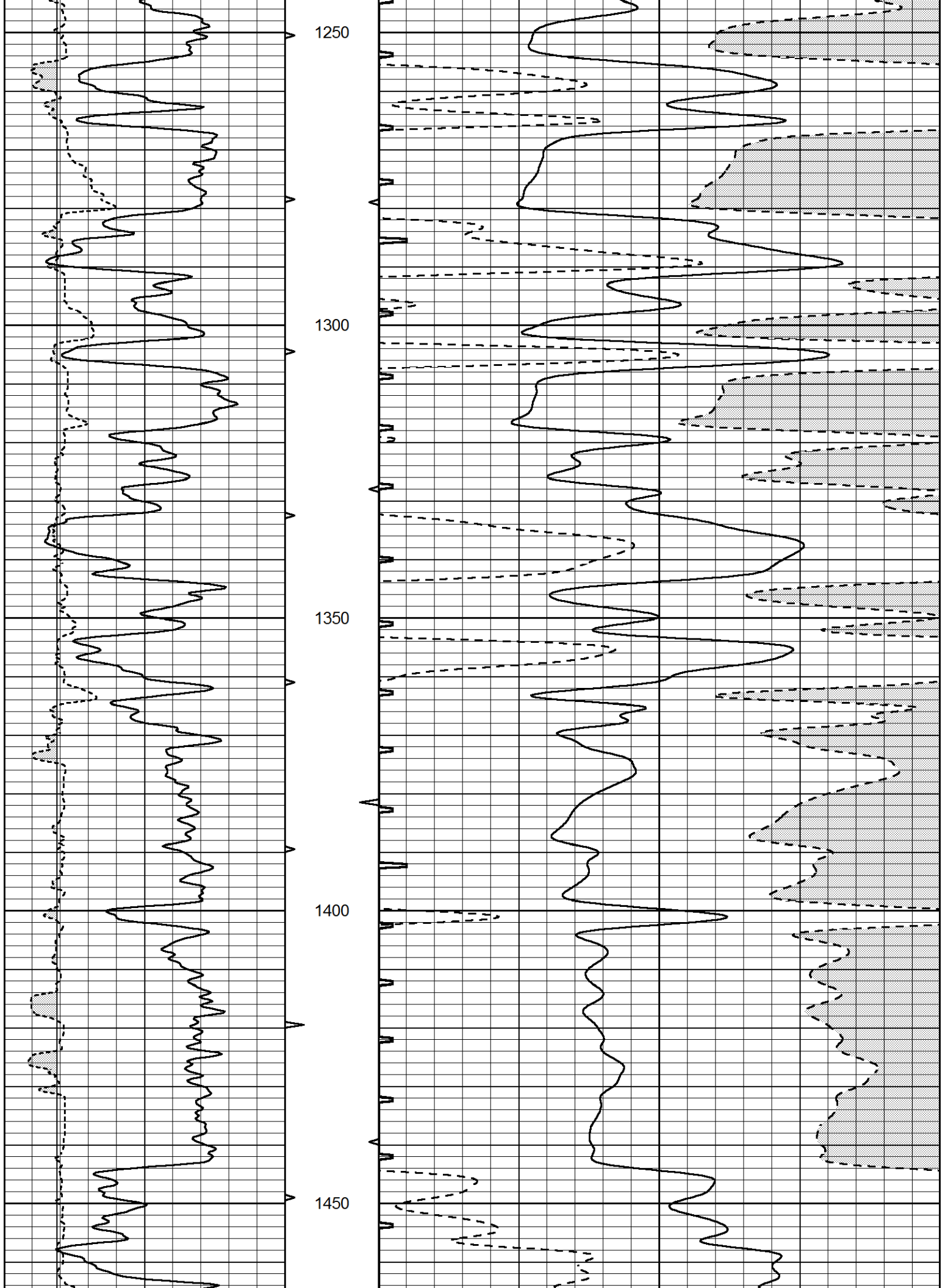
1050

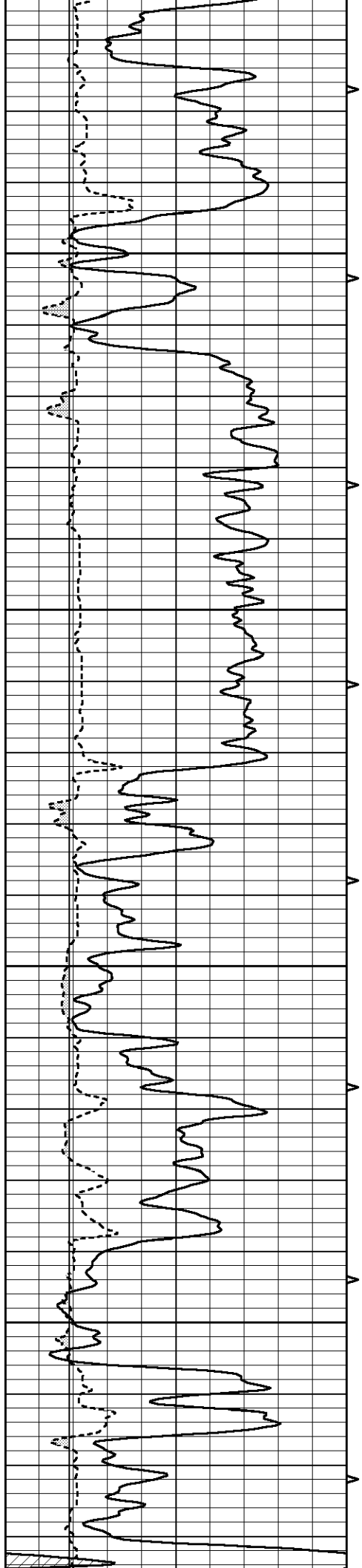
1100

1150

1200





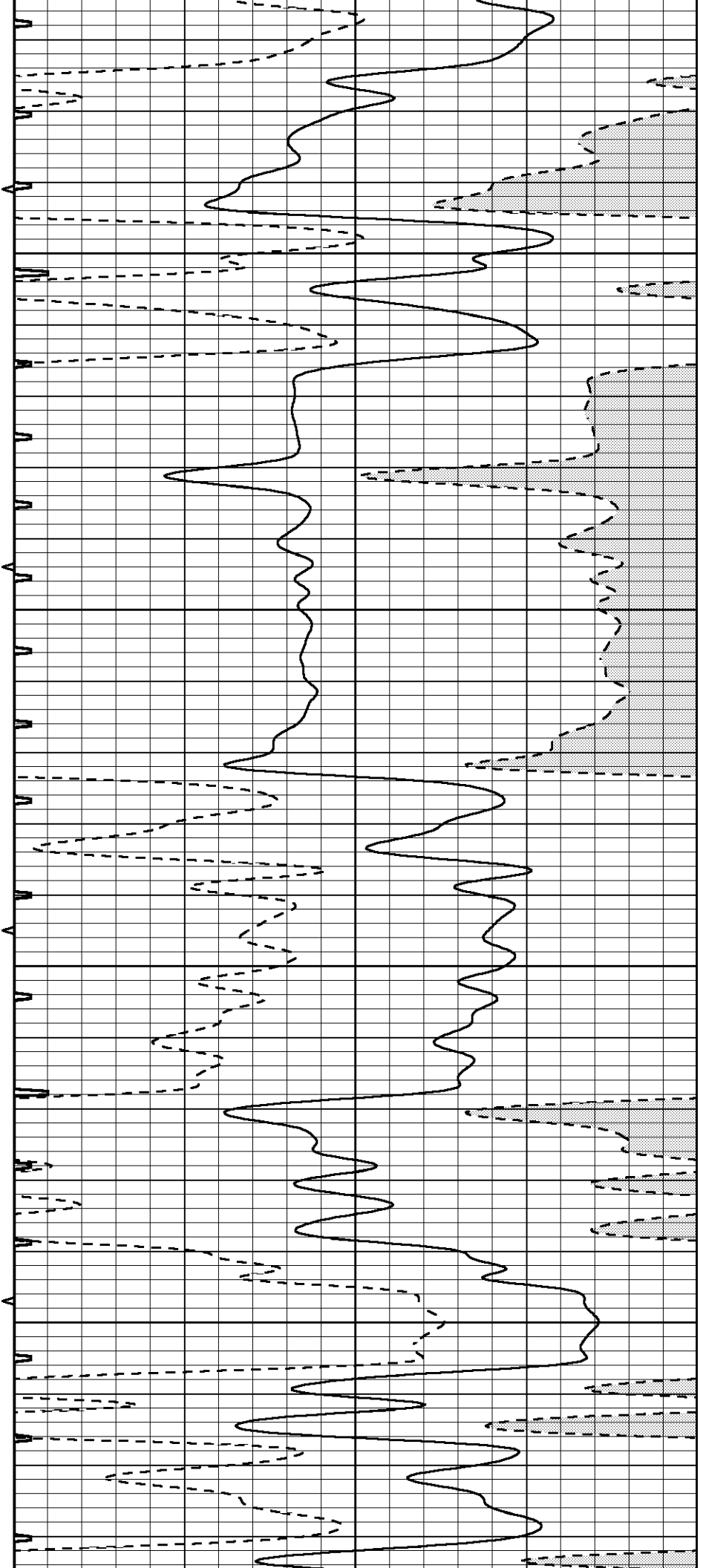


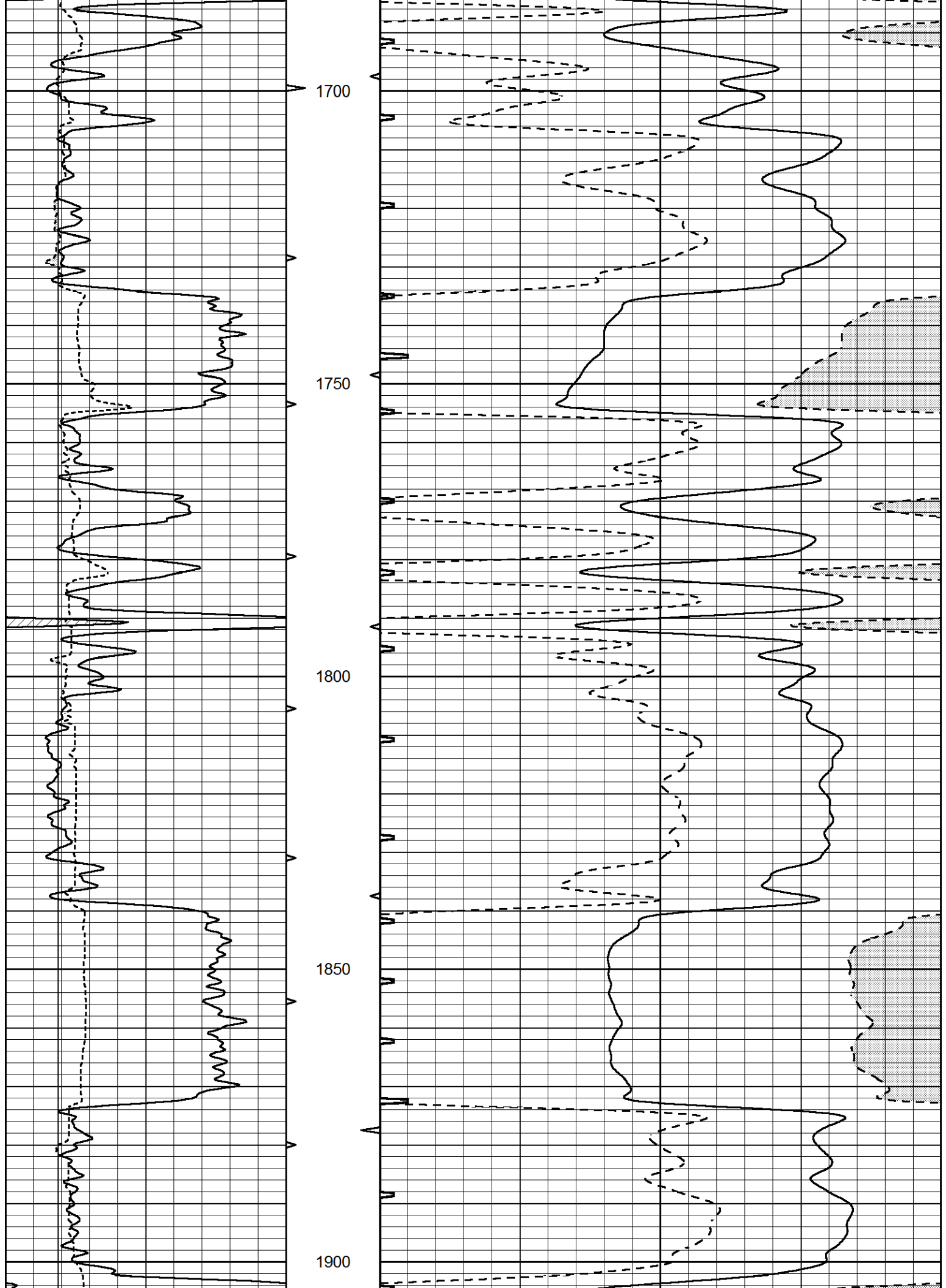
1500

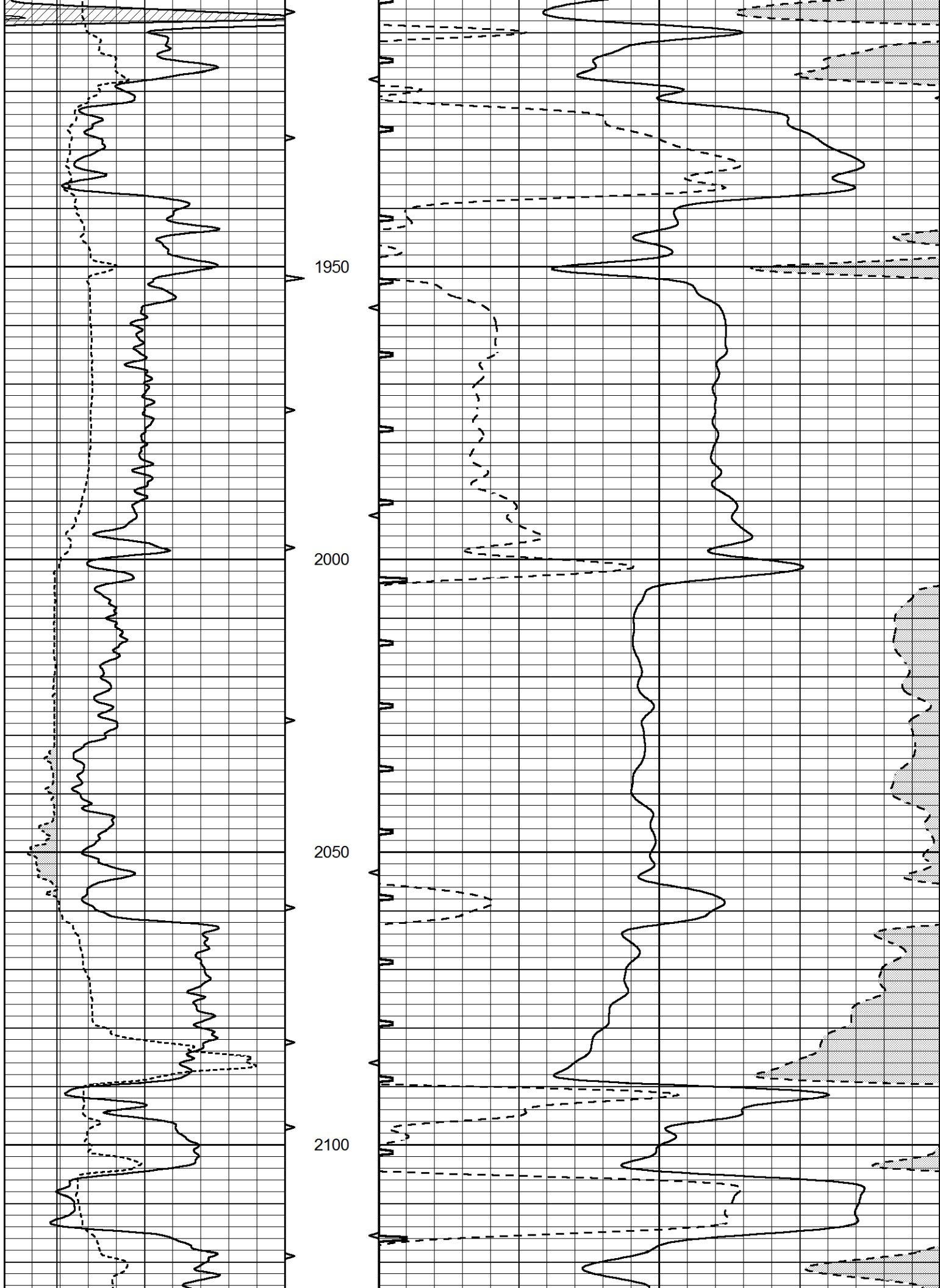
1550

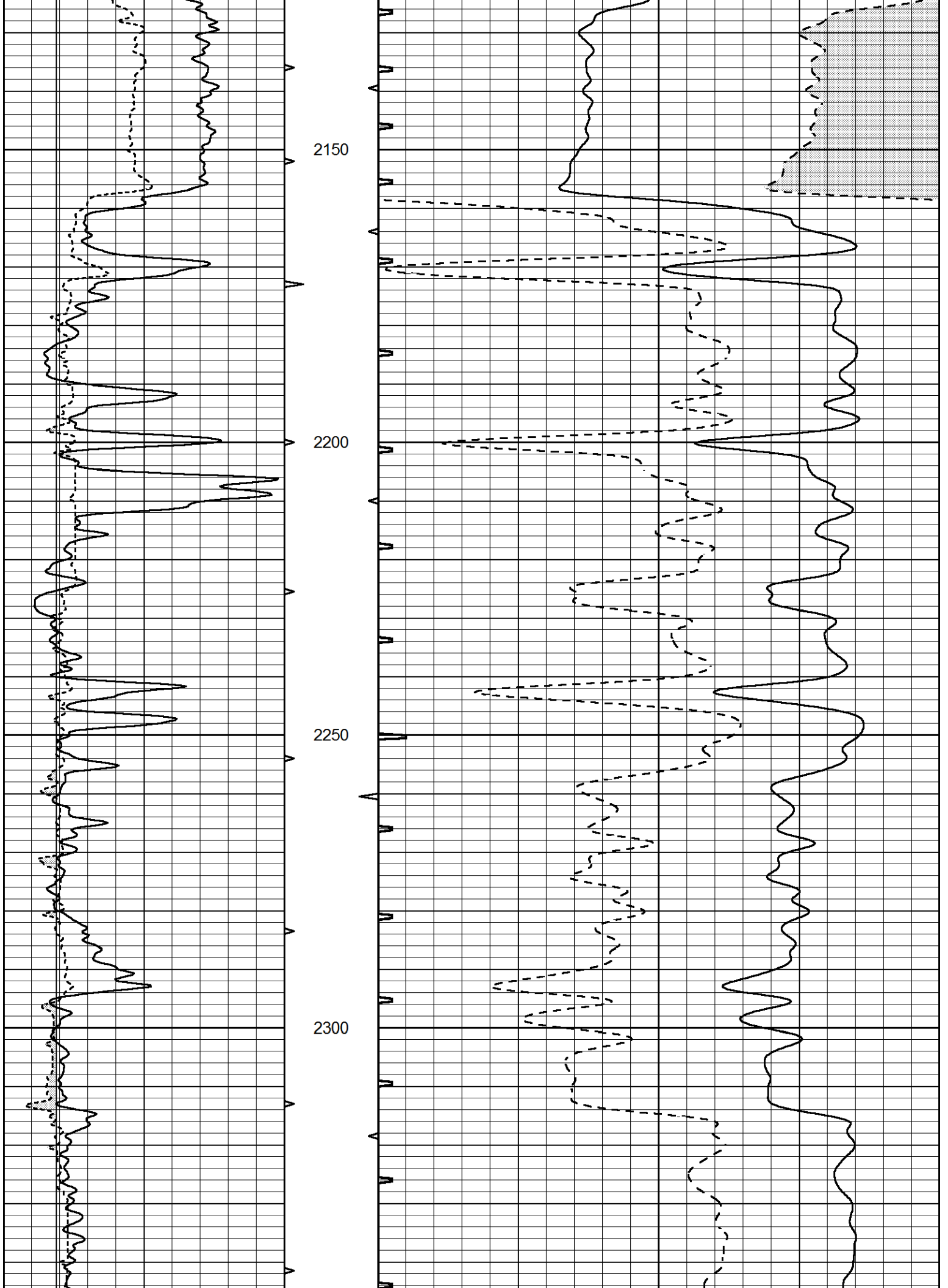
1600

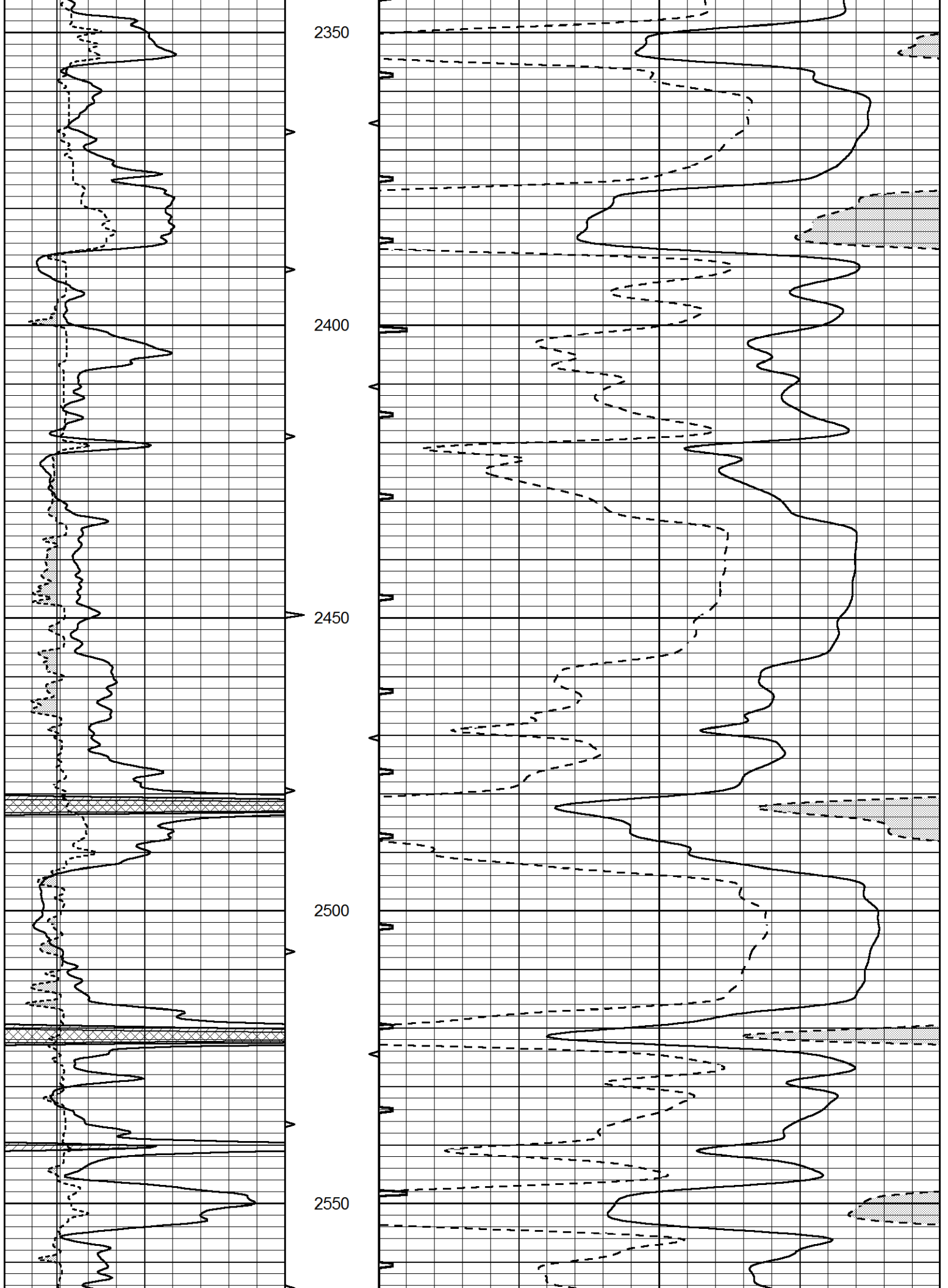
1650

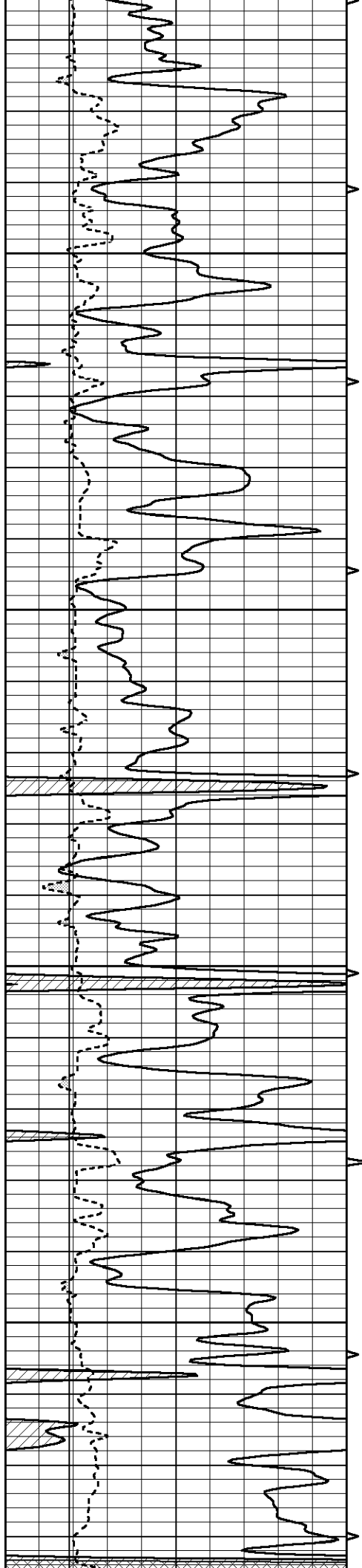










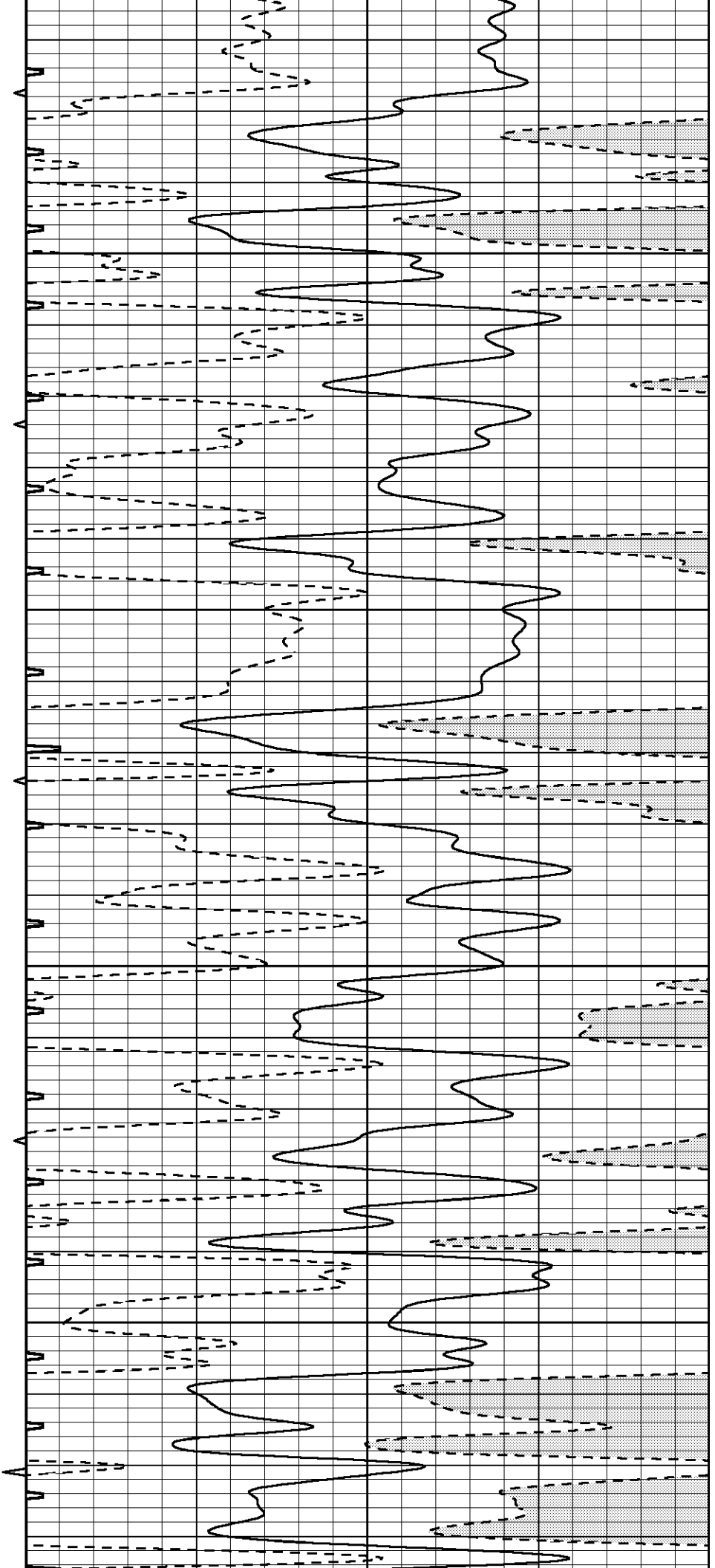


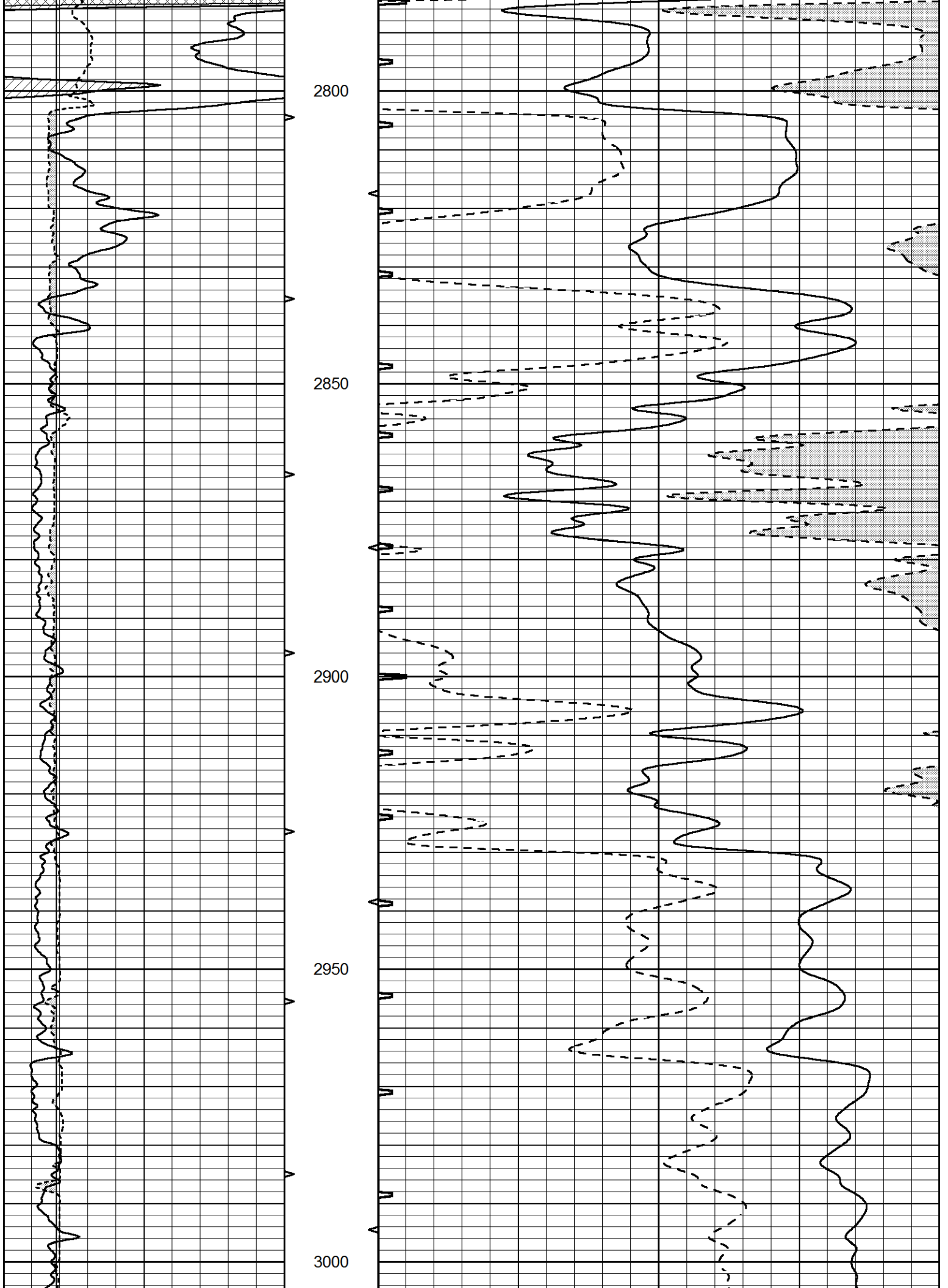
2600

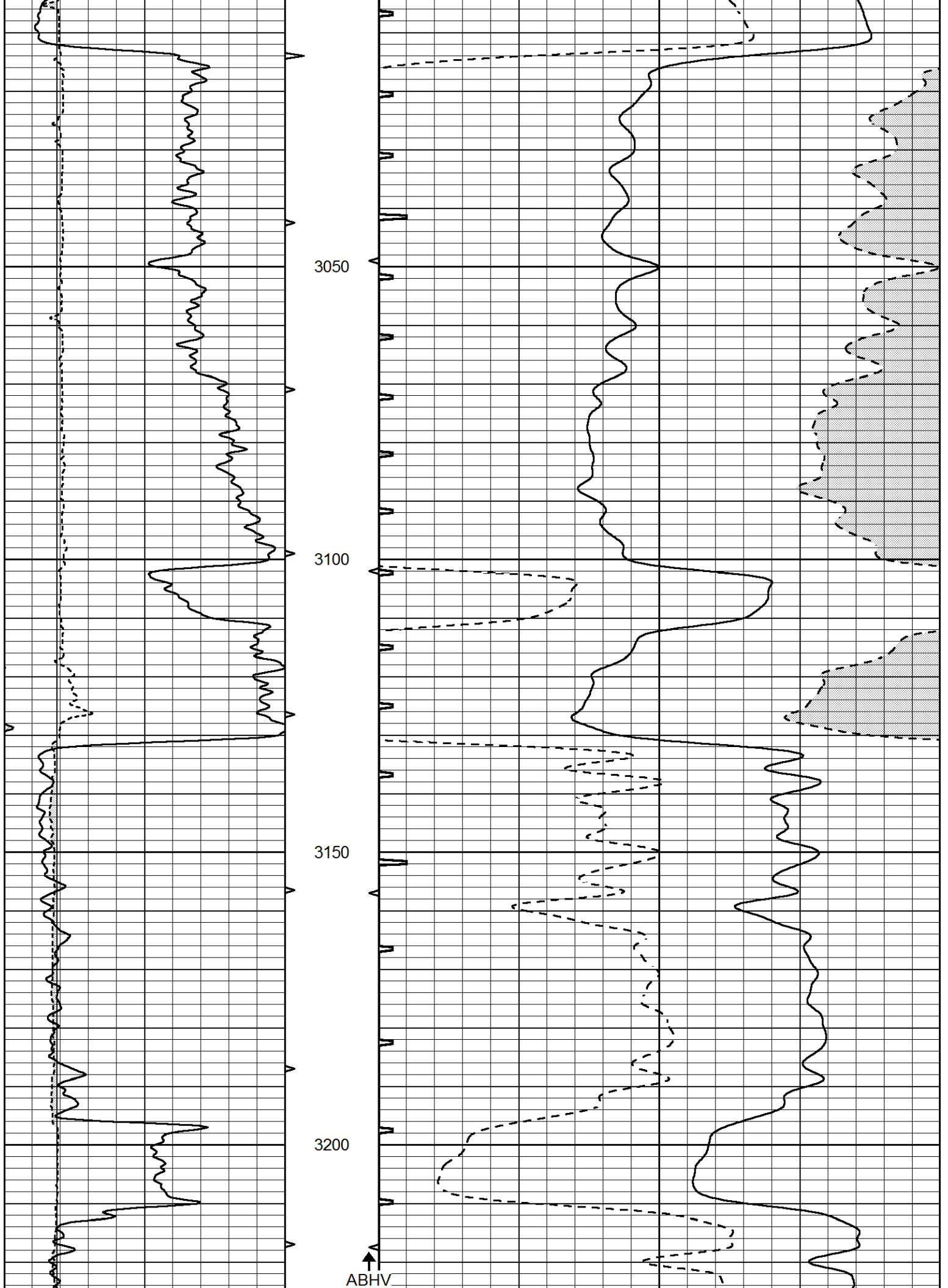
2650

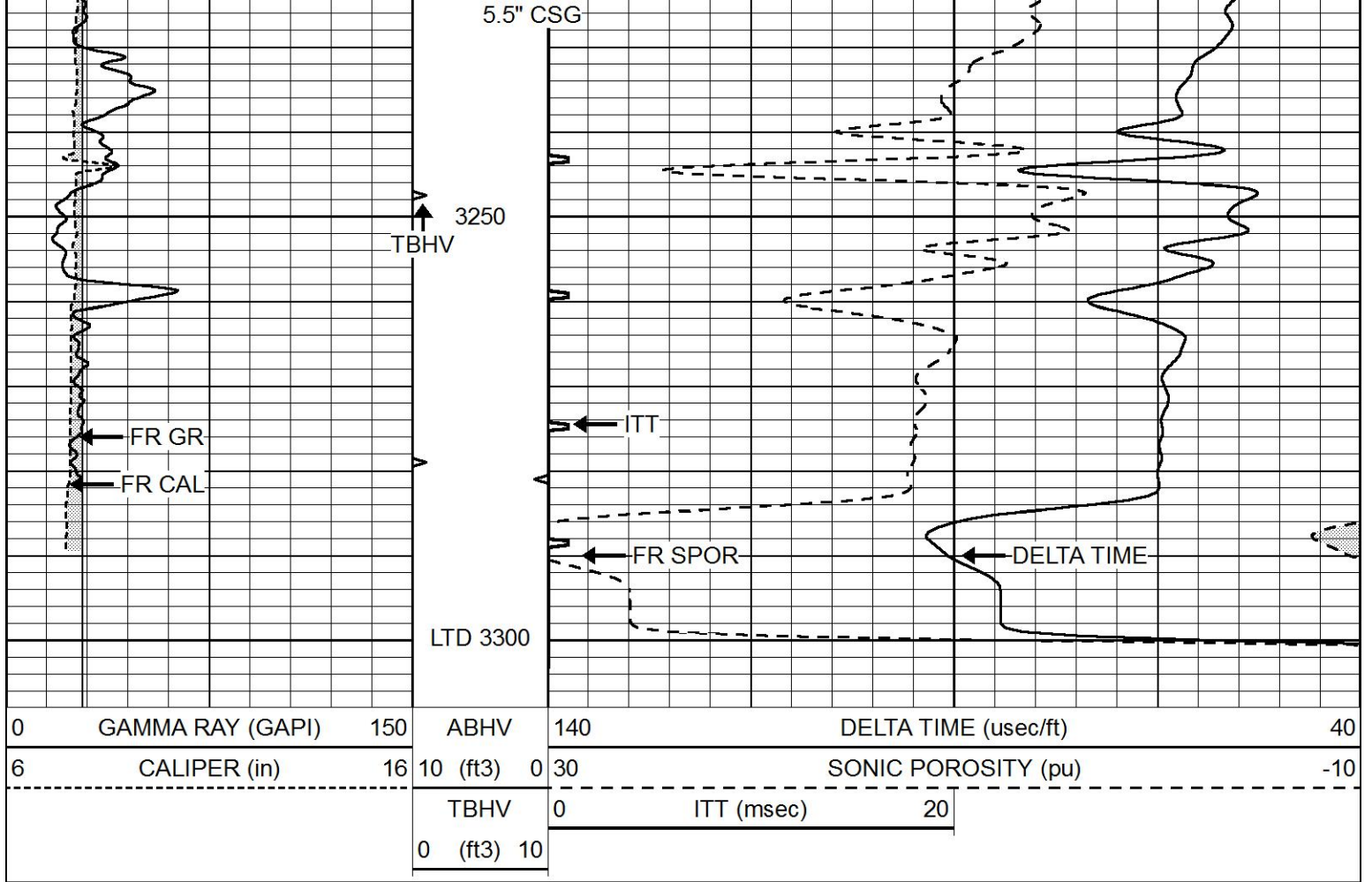
2700

2750









REPEAT SECTION

Database File 4428pe.db
 Dataset Pathname pass5.1
 Presentation Format _slt
 Dataset Creation Wed Oct 30 11:17:26 2019
 Charted by Depth in Feet scaled 1:240

0	GAMMA RAY (GAPI)	150	ABHV	140	DELTA TIME (usec/ft)	40
6	CALIPER (in)	16	10 (ft3) 0	30	SONIC POROSITY (pu)	-10
			TBHV	0	ITT (msec)	20
			0 (ft3) 10			

