

MICRO LOG



Company M&M EXPLORATION, INC.  
 Well GUTHRIE FARMS #1  
 Field  
 County HARVEY State KANSAS

Location: API #: 15-079-20719-0000  
 1090' FNL & 330' FWL  
 SEC 9 TWP 22S RGE 2E  
 Permanent Datum GROUND LEVEL Elevation 1474  
 Log Measured From KELLY BUSHING 12' A.G.L.  
 Drilling Measured From KELLY BUSHING  
 Other Services CDL/CNL/PE DIL/SON  
 Elevation K.B. 1486 D.F. 1484 G.L. 1474

Date	10/30/19
Run Number	TWO
Depth Driller	3300
Depth Logger	3300
Bottom Logged Interval	3282
Top Log Interval	2000
Casing Driller	8 5/8" @ 212'
Casing Logger	212'
Bit Size	7 7/8
Type Fluid in Hole	CHEMICAL MUD
Density / Viscosity	9.1/60
pH / Fluid Loss	10.0/8.0
Source of Sample	FLOWLINE
Rm @ Meas. Temp	1.10 @ 62F
Rmf @ Meas. Temp	0.82 @ 62F
Rmc @ Meas. Temp	1.32 @ 62F
Source of Rmf / Rmc	MEASUREMENT
Rm @ BHT	0.62 @ 110F
Time Circulation Stopped	2 HOURS
Time Logger on Bottom	////
Maximum Recorded Temperature	110F
Equipment Number	3802
Location	HAYS, KANSAS
Recorded By	JASON CAPPELLUCCI
Witnessed By	WYATT URBAN

<<< Fold Here >>>

All interpretations are opinions based on inferences from electrical or other measurements and we cannot and do not guarantee the accuracy or correctness of any interpretation, and we shall not, except in the case of gross or willful negligence on our part, be liable or responsible for any loss, costs, damages, or expenses incurred or sustained by anyone resulting from any interpretation made by any of our officers, agents or employees. These interpretations are also subject to our general terms and conditions set out in our current Price Schedule.

Comments

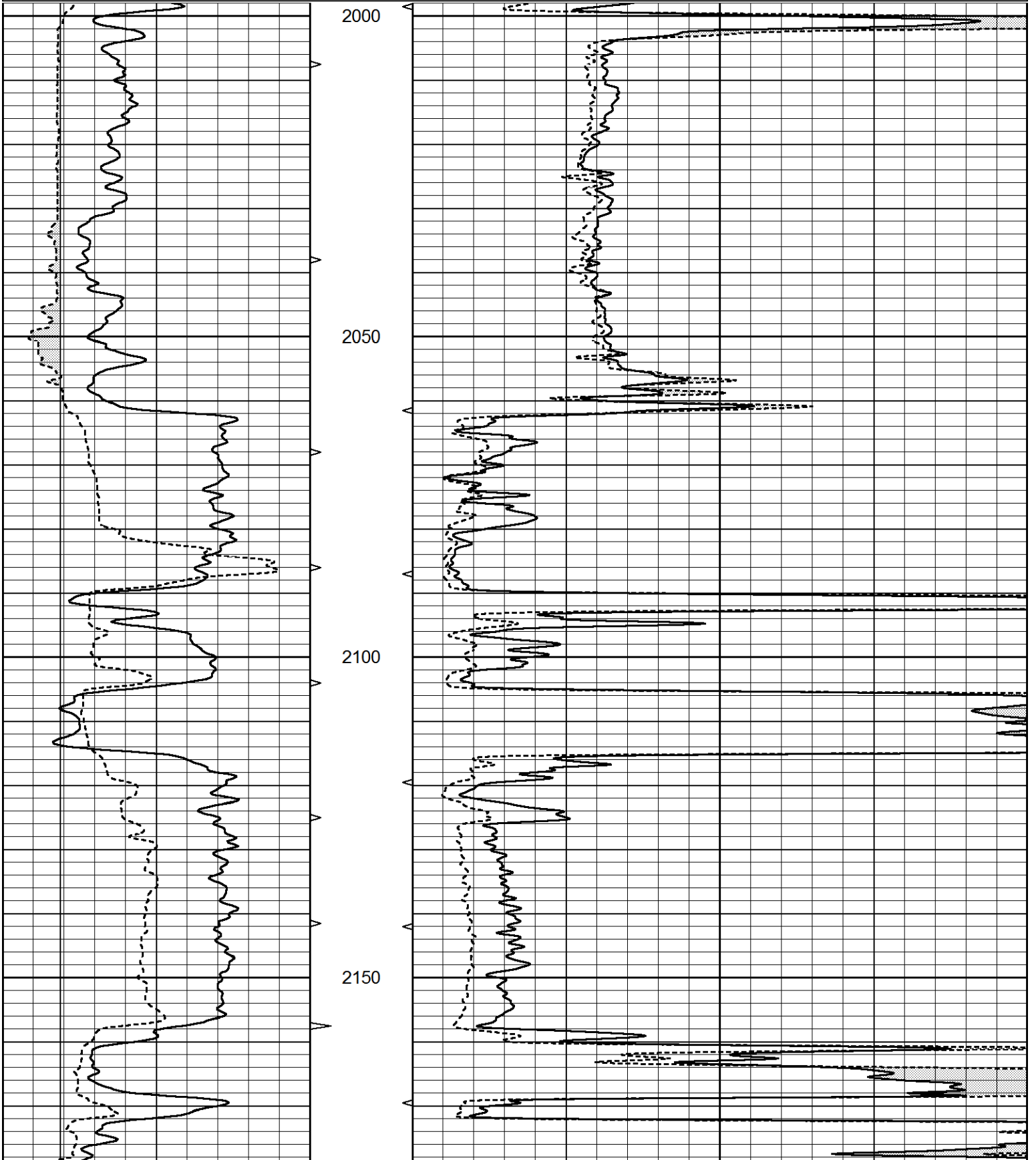
THANK YOU FOR USING ELI WIRELINE SERVICES, HAYS, KS. ( 785 ) 628-6395  
 DIRECTIONS  
 RUSSELL KS, SOUTH TO INTERSECTION OF HWY 281 & HWY 4 - 3 SOUTH ON BOYD  
 BLKTOP - 2 WEST - 1/4 SOUTH - EAST INTO

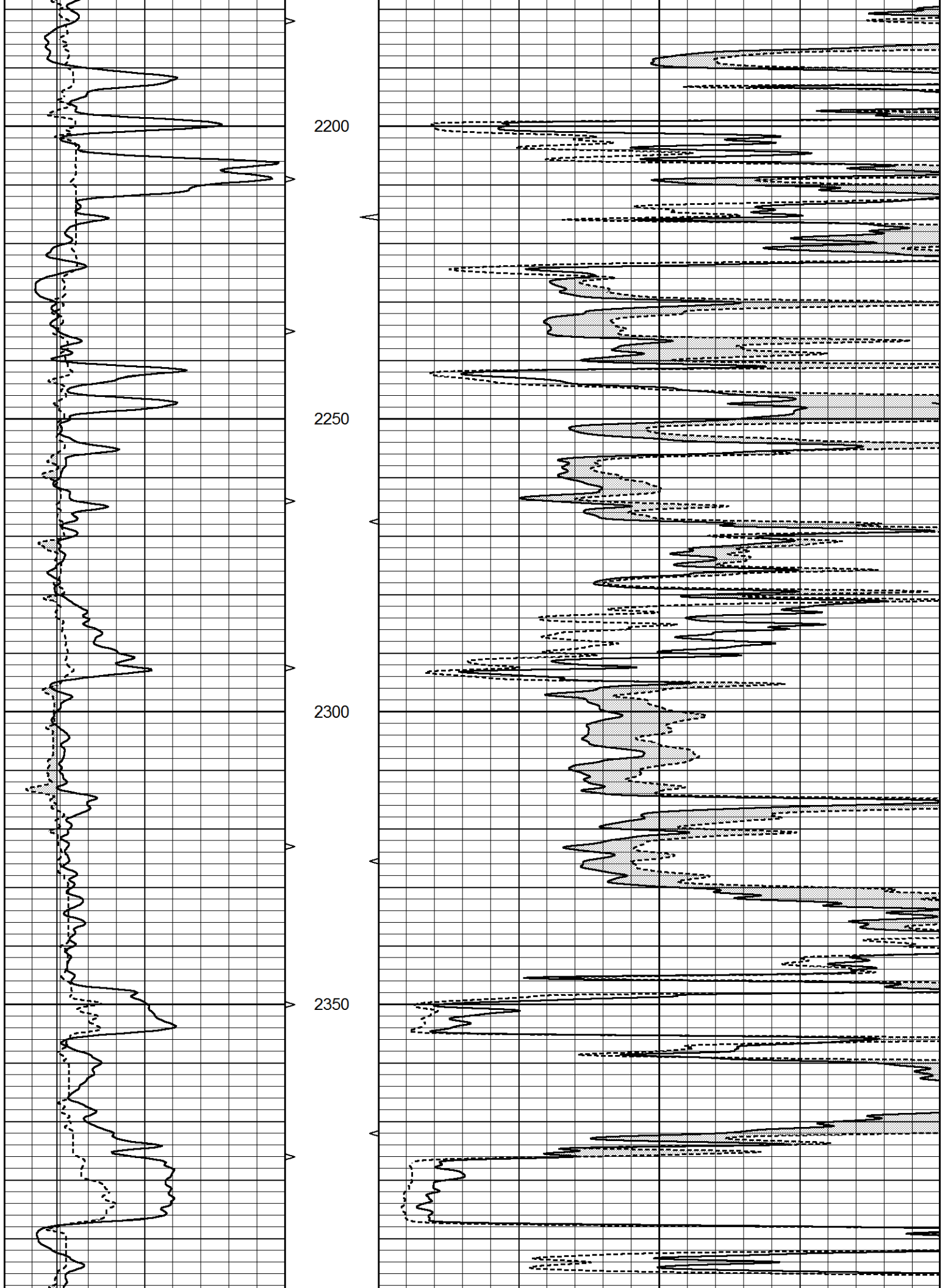


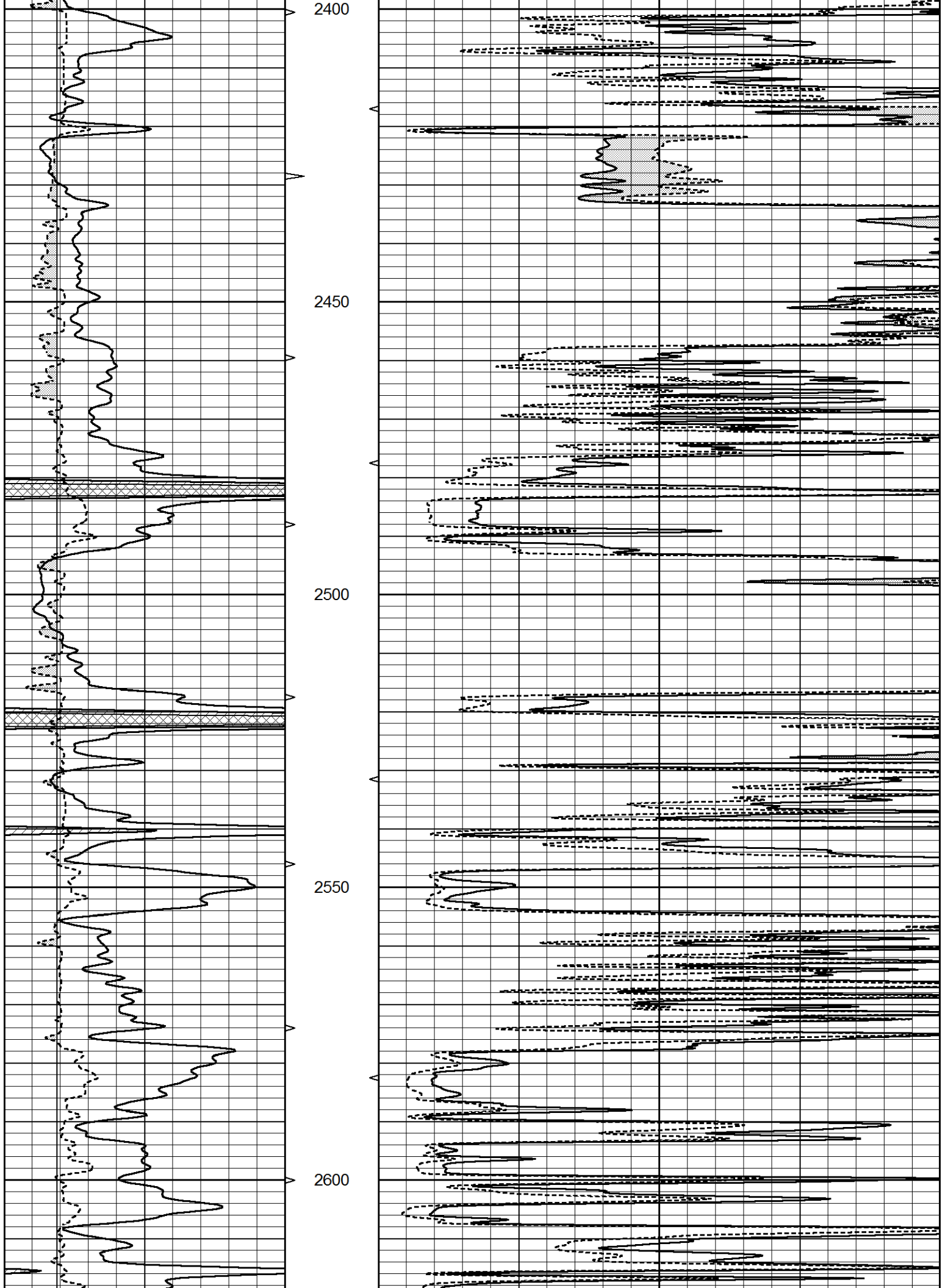
MAIN SECTION

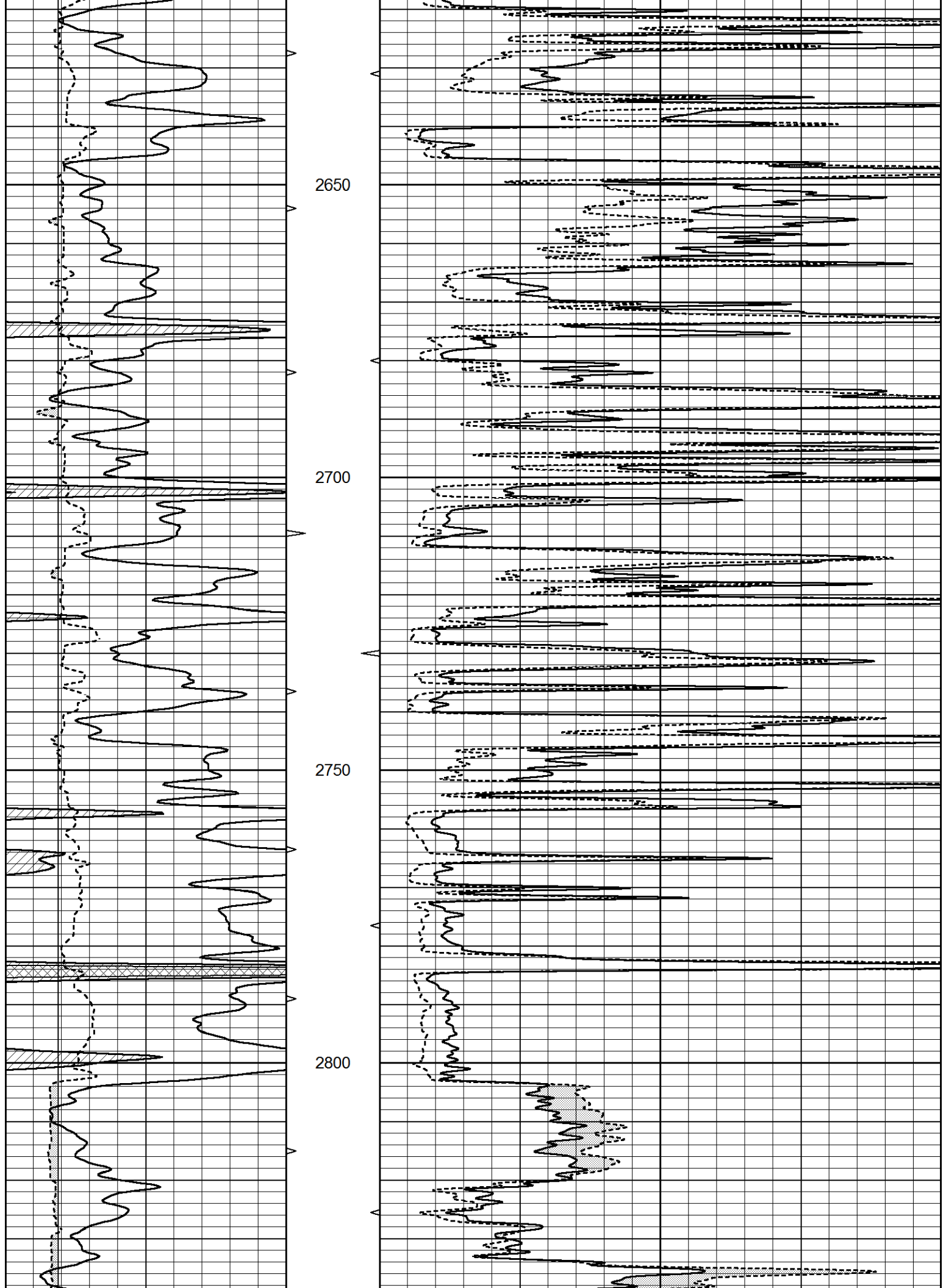
Database File 4428pe.db  
 Dataset Pathname pass6.1  
 Presentation Format \_micro  
 Dataset Creation Wed Oct 30 11:52:07 2019  
 Charted by Depth in Feet scaled 1:240

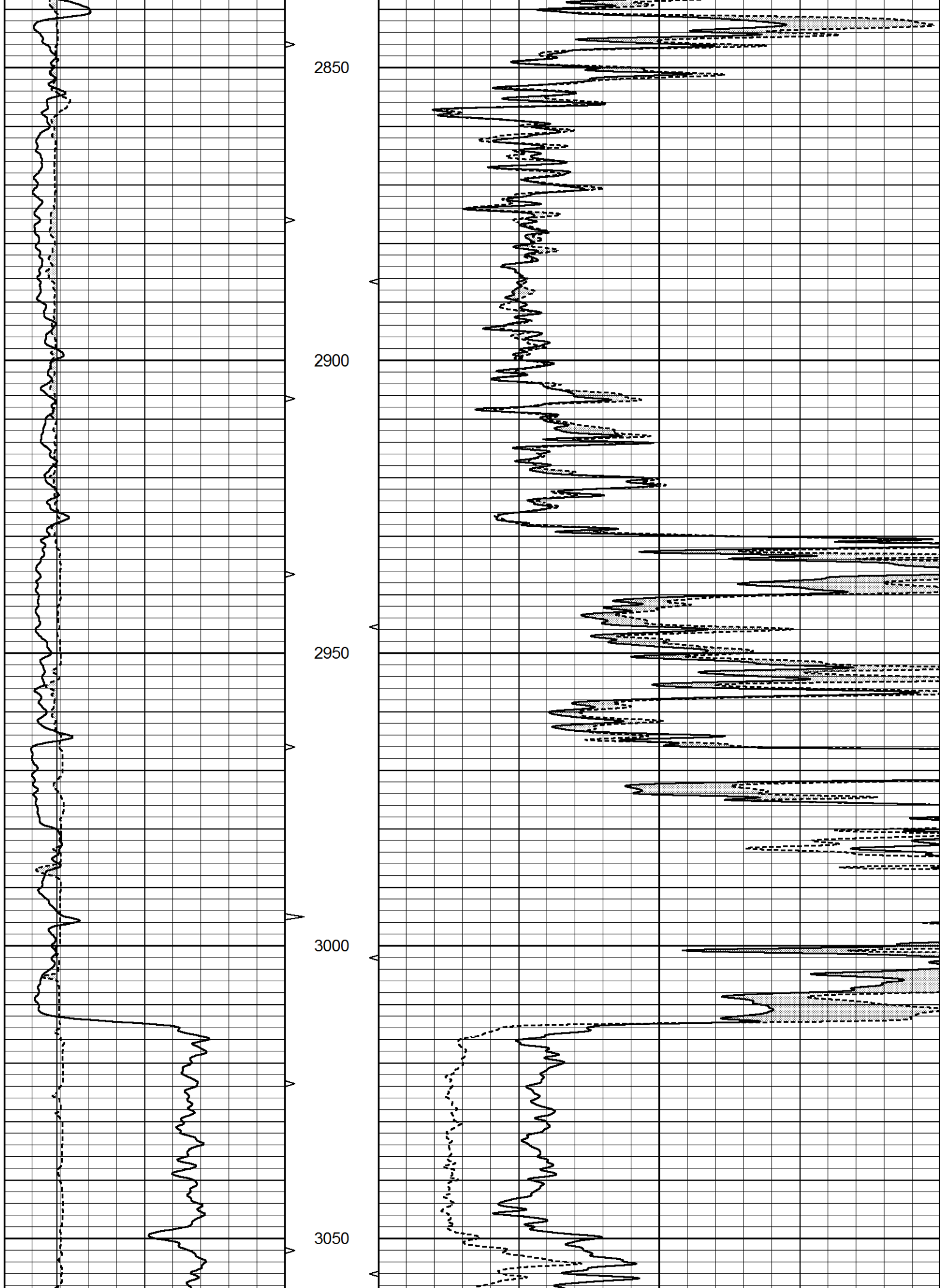
0	GAMMA RAY (GAPI)	150	ABHV	0	MEL1.5 (Ohm-m)	40
6	CALIPER (in)	16	10 (ft3)	0	MEL2.0 (Ohm-m)	40
			TBHV			
			0 (ft3)	10		

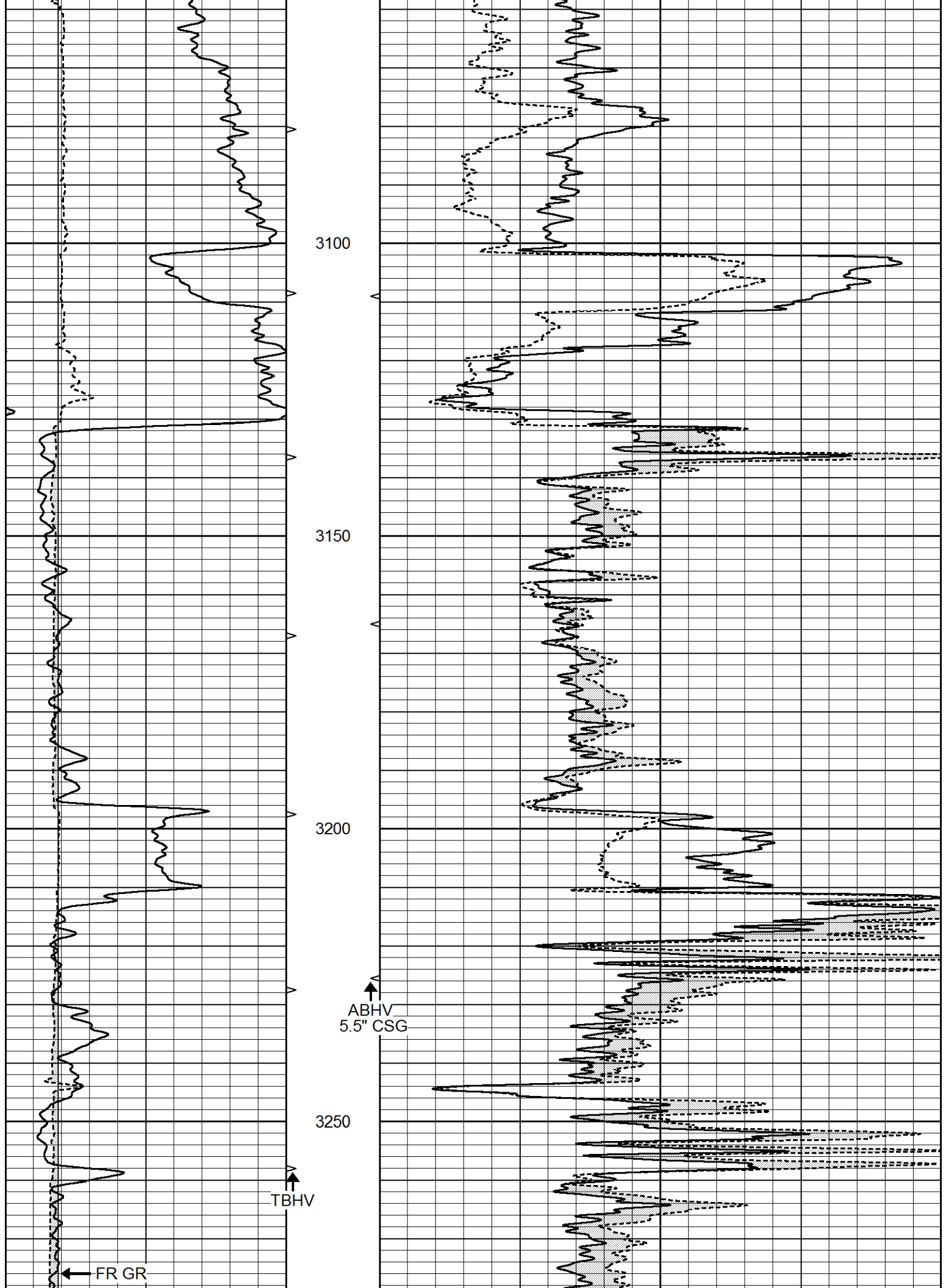


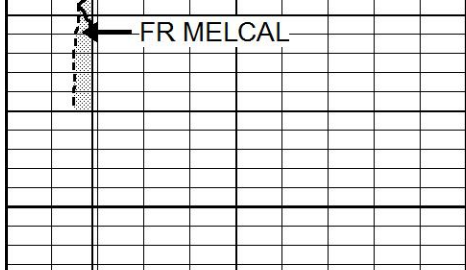




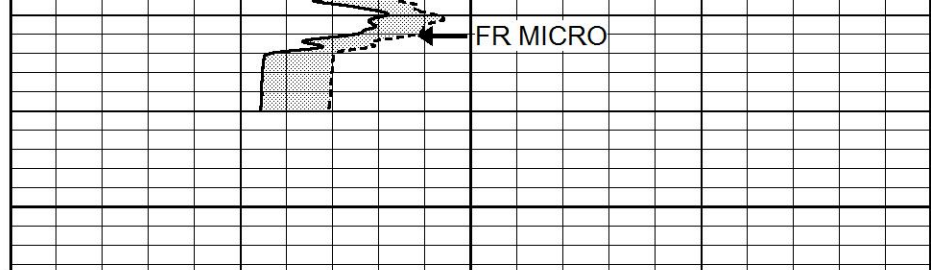








LTD 3300



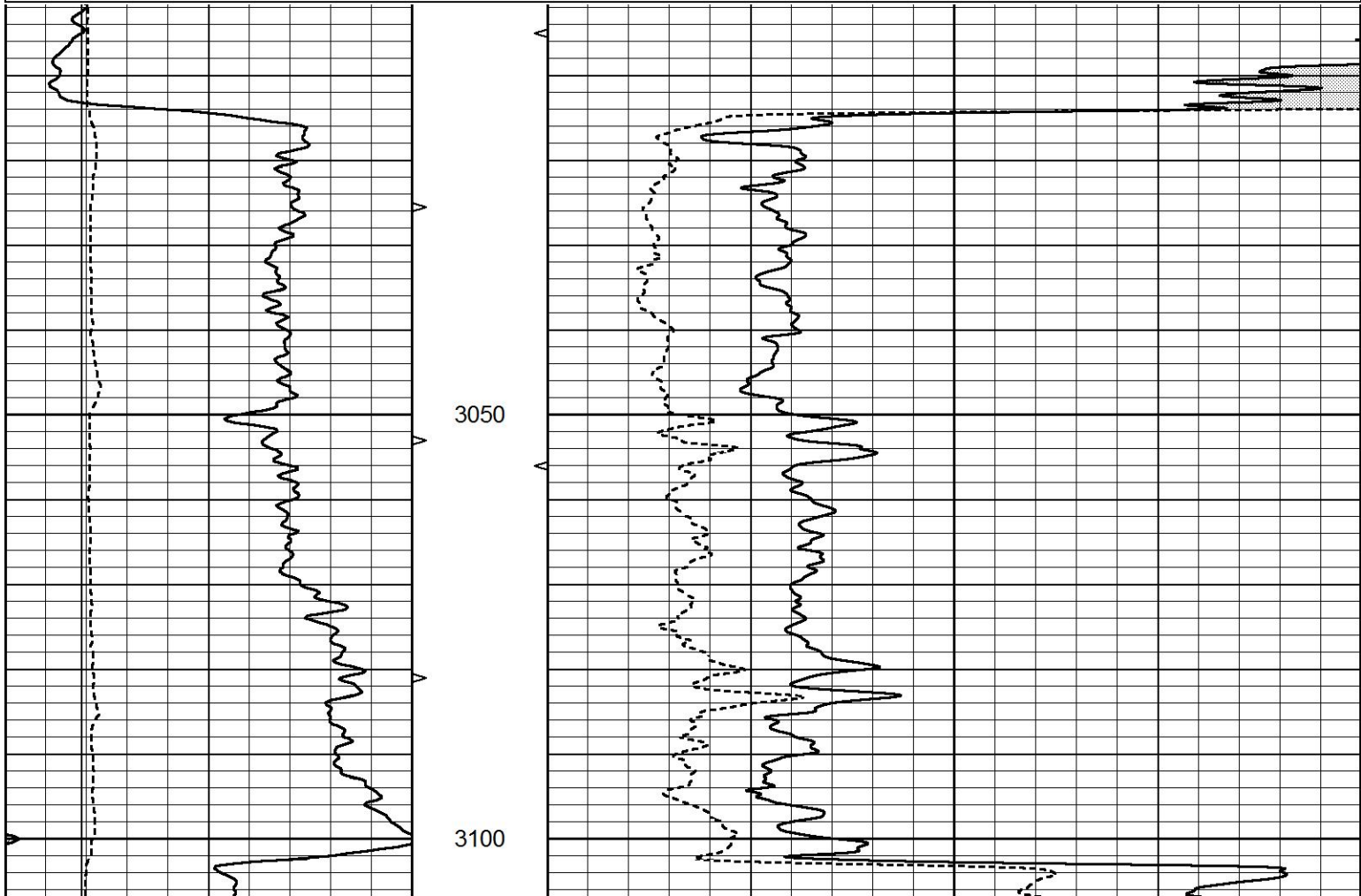
0	GAMMA RAY (GAPI)	150	ABHV	0	MEL1.5 (Ohm-m)	40
6	CALIPER (in)	16	10 (ft3)	0	MEL2.0 (Ohm-m)	40
			TBHV			
			0 (ft3)	10		

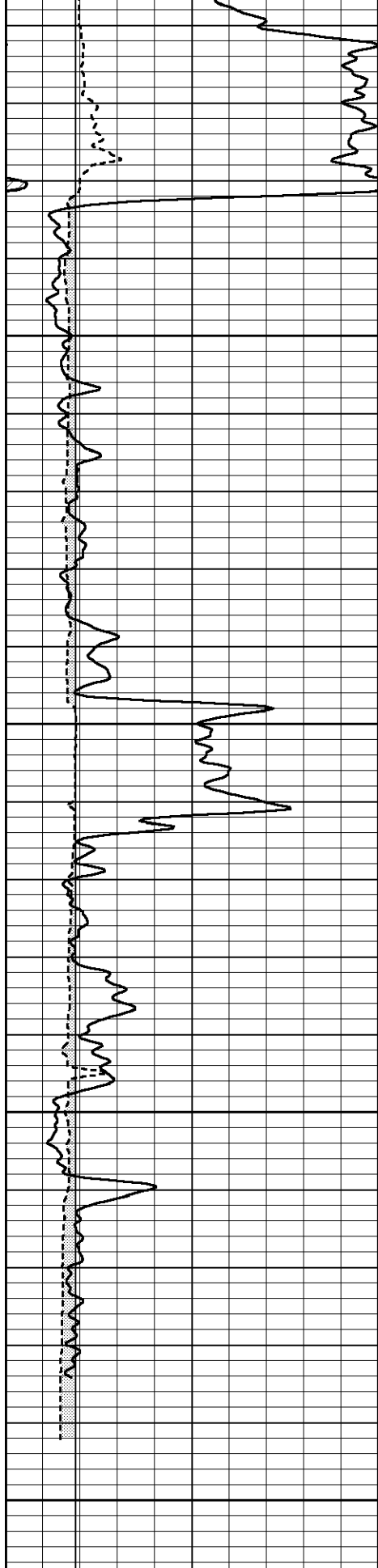


# REPEAT SECTION

Database File 4428pe.db  
 Dataset Pathname pass5.1  
 Presentation Format \_micro  
 Dataset Creation Wed Oct 30 11:17:26 2019  
 Charted by Depth in Feet scaled 1:240

0	GAMMA RAY (GAPI)	150	ABHV	0	MEL1.5 (Ohm-m)	40
6	CALIPER (in)	16	10 (ft3)	0	MEL2.0 (Ohm-m)	40
			TBHV			
			0 (ft3)	10		





3150

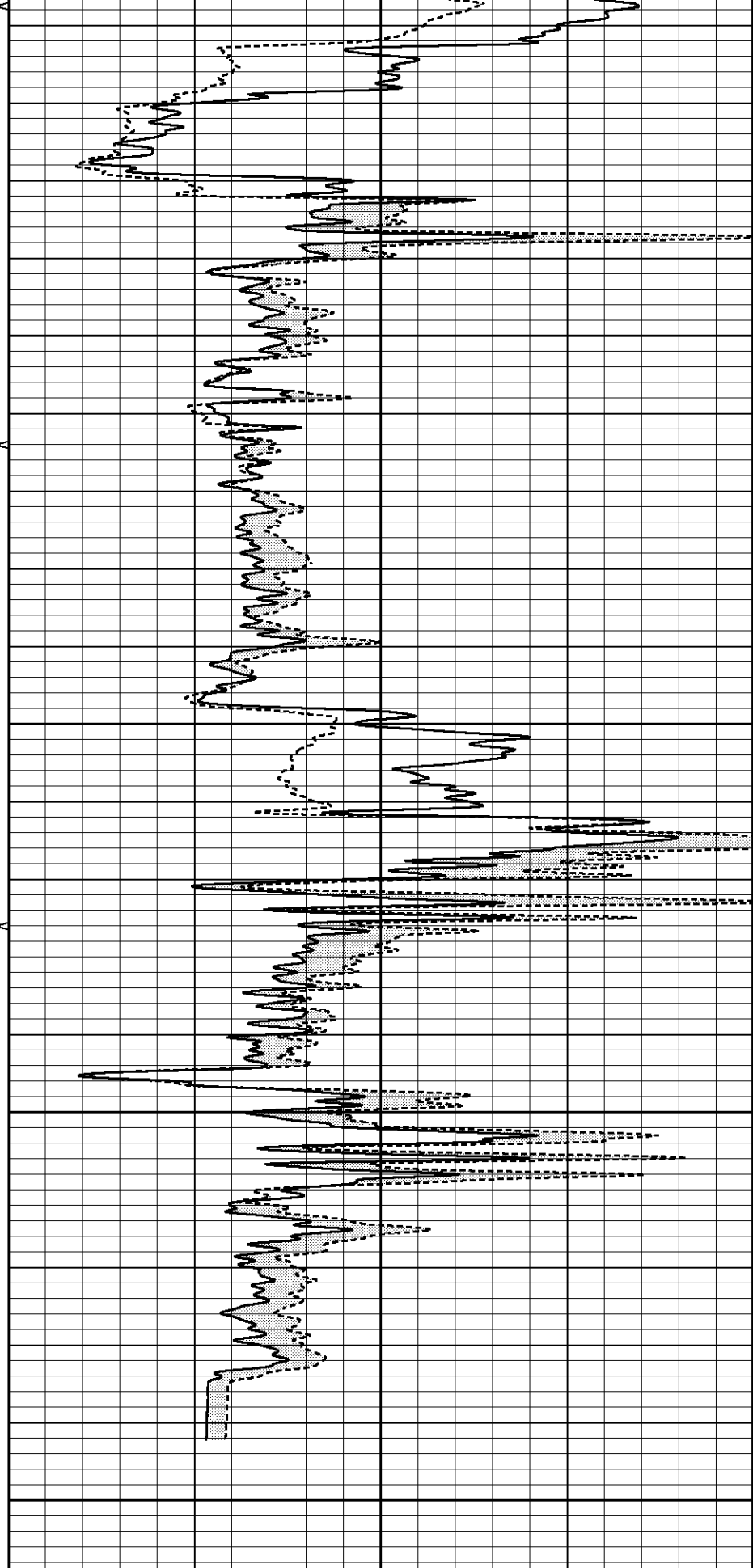
3200

3250

3300

0 GAMMA RAY (GAPI) 150  
 6 CALIPER (in) 16

ABHV  
 10 (ft3) 0



0 MEL1.5 (Ohm-m) 40  
 0 MEL2.0 (Ohm-m) 40

TBHV  
 0 (ft3) 10

Calibration Report

Database File 4428pe.db  
 Dataset Pathname pass5.1  
 Dataset Creation Wed Oct 30 11:17:26 2019

MICRO\_USR Calibration Report

Serial Number: 070911  
 Tool Model: ProbeL  
 Performed: Wed Aug 07 14:47:35 2019

Caliper Calibration:	Gain=3.755	Offset=2.250
	Low Cal	High Cal
References	8.000	14.000
Readings	1.451	3.049

1.5" Calibration:	Gain=40.000	Offset=0.000
	Low Cal	High Cal
References	0.000	20.000
Readings	0.004	0.843

2" Calibration:	Gain=40.000	Offset=-0.650
	Low Cal	High Cal
References	0.000	20.000
Readings	0.021	0.810

Microlog Calibration Report

Serial-Model: 070911-ProbeL  
 Performed: Sat Apr 11 01:13:01 2015

	Readings			References			Results	
	Zero	Cal		Zero	Cal		m	b
Normal	0.0002	0.4836	V	0.0000	10.0000	Ohm-m	20.6908	-0.0051
Inverse	0.0018	0.6297	V	0.0000	10.0000	Ohm-m	15.9263	-0.0282
Caliper	0.0000	1.0000	V	0.0000	1.0000	in	1.0000	0.0000

Gamma Ray Calibration Report

Serial Number: 070558  
 Tool Model: Probe1  
 Performed: Mon Jan 21 19:38:56 2019

Calibrator Value: 1.0 GAPI

Background Reading: 0.0 cps  
 Calibrator Reading: 1.0 cps

Sensitivity: 0.2500 GAPI/cps