



MICRORESISTIVITY LOG

Company: F.G. HOLL COMPANY, LLC
 Well: LEROY FARMING TRUST #2-30
 Field: WILDCAT
 County: BARTON
 State: KANSAS

Company: F.G. HOLL COMPANY, LLC
 Well: LEROY FARMING TRUST #2-30
 Field: WILDCAT
 County: BARTON
 State: KANSAS

Location: API #: 15-009-26279-00-00
 945' FNL & 1400' FWL
 SEC 30 TWP 19S RGE 14W
 Permanent Datum: GROUND LEVEL Elevation 1907'
 Log Measured From: KELLY BUSHING
 Drilling Measured From: KELLY BUSHING
 Other Services: CNL/CDL DIL/BHCS
 Elevation: K.B. 1915', D.F. N/A, G.L. 1907'

Date	11/13/2019
Run Number	TWO
Depth Driller	3625'
Depth Logger	3626'
Bottom Logged Interval	3625'
Top Log Interval	1700'
Casing Driller	8.625" @ 844'
Casing Logger	843'
Bit Size	7.875"
Type Fluid in Hole	CHEMICAL
Salinity, ppm CL	5900
Density / Viscosity	9.3 55
pH / Fluid Loss	10.5 8.4
Source of Sample	FLOWLINE
Rm @ Meas. Temp	.65 @ 76
Rmt @ Meas. Temp	.49 @ 76
Rmc @ Meas. Temp	.88 @ 76
Source of Rmf / Rmc	CHARTS
Rm @ BHT	.44 @ 112
Operating Rig Time	5 HOURS
Max Rec. Temp. F	112 DEGF
Equipment Number	P-108
Location	HAYS
Recorded By	J. HENRICKSON
Witnessed By	RENE HUSTEAD

<<< Fold Here >>>

All interpretations are opinions based on inferences from electrical or other measurements and Pioneer Wireline Services, LLC cannot and does not guarantee the accuracy or correctness of any interpretation, and Pioneer Wireline Services, LLC will not be liable or responsible for any loss, costs, damages, or expenses incurred or sustained by anyone resulting from any interpretation made by any of our officers, agents or employees.

Comments

N/A DENOTES NOT AVAILABLE OR NON-APPLICABLE.
 HEIZER KANSAS
 1 WEST, 3 1/2 SOUTH, 1 WEST, 1/4 SOUTH, EAST INTO

Log Measured From: KELLY BUSHING 8 Ft. Above Permanent Datum

THANK YOU FOR USING PIONEER ENERGY SERVICES
www.pioneerenergy.com 785-625-3858

Your Pioneer Energy Services Crew Engineer: J. HENRICKSON Operator: Operator: Operator:	This Log Record Was Witnessed By Primary Witness: RENE HUSTEAD Secondary Witness: Secondary Witness: Secondary Witness:
---	---

Log Variables

DatabaseC:\ProgramData\Warrior\Data\fg_holl_leroy_farming_trust_2_30.db
 Dataset field/well/stack/pass4.1/_vars_

Top - Bottom

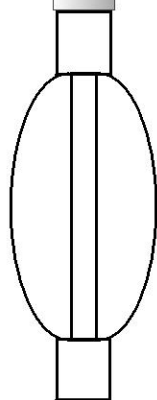
A	BOREID in	BOTTEMP degF	CASEOD in	CASETHCK in	FLUIDDEN g/cc	M	MATRXDEN g/cc
1	7.875	112	4.5	0	1	2	2.71
NPORSEL	PERFS	SNDERR mmho/m	SNDERRM mmho/m	SPSHIFT mV	SRFTEMP degF	SZCOR	TDEPTH ft
Limestone	0	0	0	160	0	Off	3625

Variable Description

A : Cement Factor (a)
 BOREID : Borehole I.D.
 BOTTEMP : Bottom Hole Temperature
 CASEOD : Casing O.D.
 CASETHCK : Casing Thickness
 FLUIDDEN : Fluid Density
 M : Cement Exp (m)
 MATRXDEN : Matrix Density

NPORSEL : Neutron Porosity Curve Select
 PERFS : Perforation Flag
 SNDERR : Deep Sonde Error Correction
 SNDERRM : Medium Sonde Error Correction
 SPSHIFT : S.P. Baseline Offset
 SRFTEMP : Surface Temperature
 SZCOR : CN Size Cor. ?
 TDEPTH : Total Depth

Sensor	Offset (ft)	Schematic	Description	Length (ft)	O.D. (in)	Weight (lb)
MCAL MI MN	22.50 22.50 22.50		ML-Armadillo (Armadillo-1) Pengo micro log tool mandrel with Armadillo Electronics	5.00	3.50	100.00
WVF4 WVF1	13.50 13.50		SLT-PENGO (0001)	16.00	3.50	300.00
WVF3 WVF2	11.50 11.50					



CENT-PENGO

5.50

3.00

70.00

Dataset: fg_holl_leroy_farming_trust_2_30.db: field/well/SONMEL/pass2
 Total length: 26.50 ft
 Total weight: 470.00 lb
 O.D.: 3.50 in

PIONEER
 Pioneer Energy Services

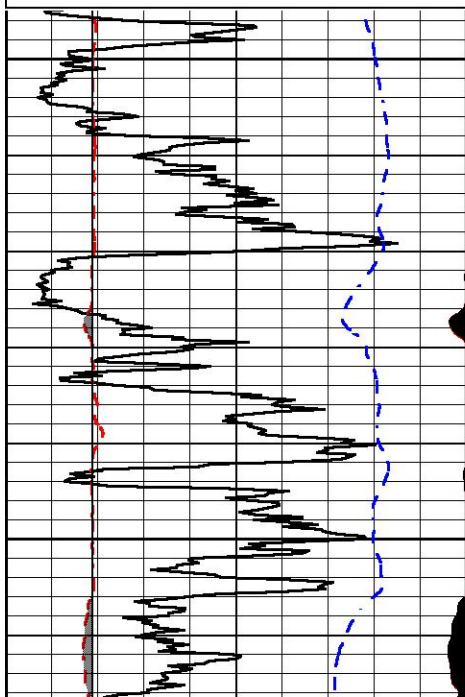


MAIN PASS

Database File fg_holl_leroy_farming_trust_2_30.db
 Dataset Pathname stack/pass4.1
 Presentation Format micro
 Dataset Creation Wed Nov 13 18:37:58 2019
 Charted by Depth in Feet scaled 1:240

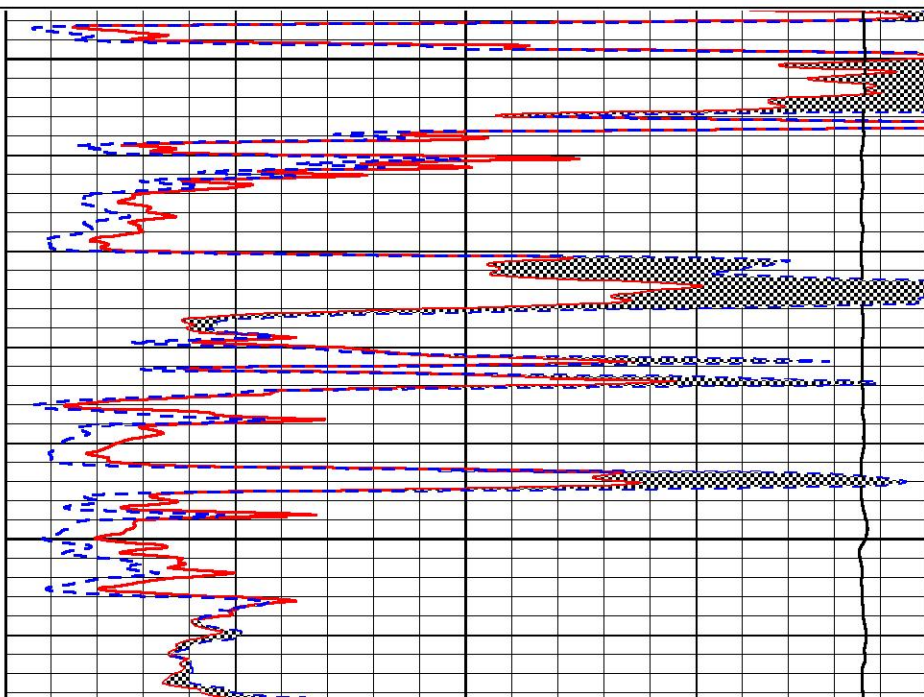
0	GAMMA RAY (GAPI)	150
6	MICRO CALIPER (in)	16
6	BIT SIZE (in)	16
-200	SP (mV)	0

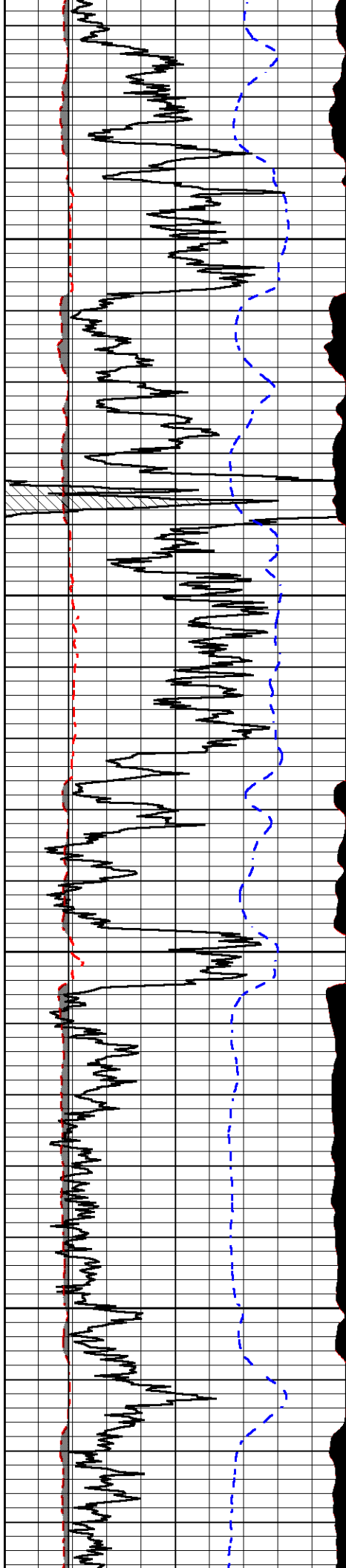
0	MICRO INVERSE 1 X 1 (Ohm-m)	40
0	MICRO NORMAL 2" (Ohm-m)	40
15000	LINE TENSION (lb)	0



1700

1750



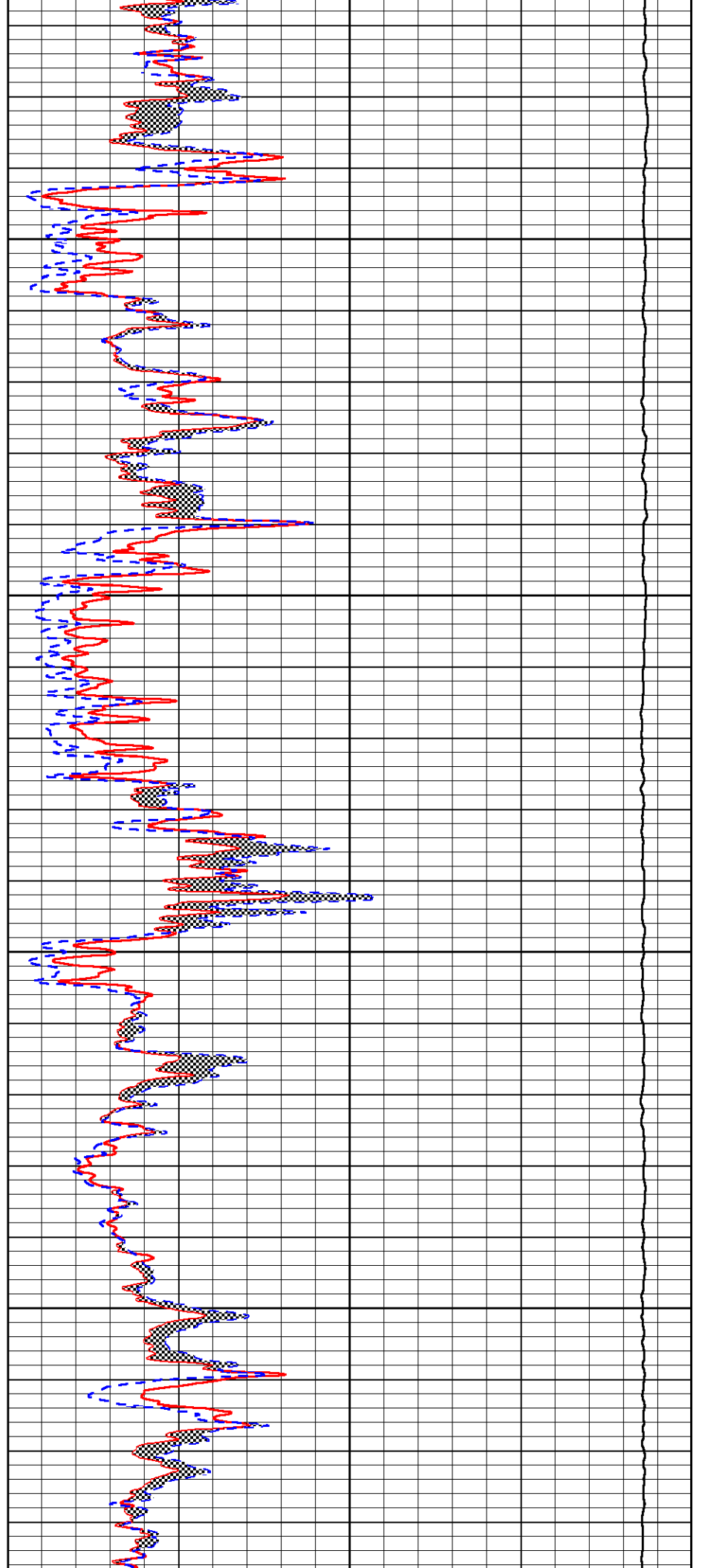


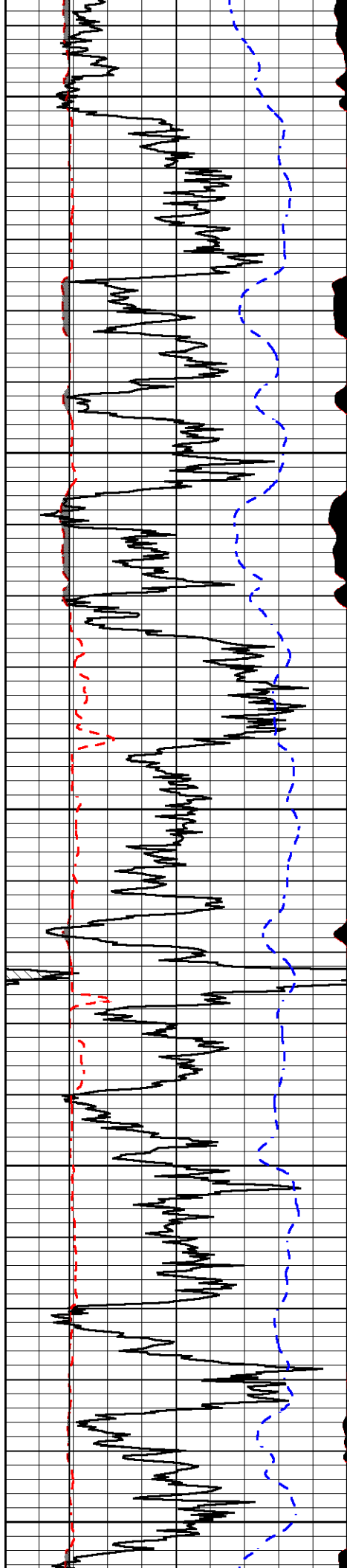
1800

1850

1900

1950





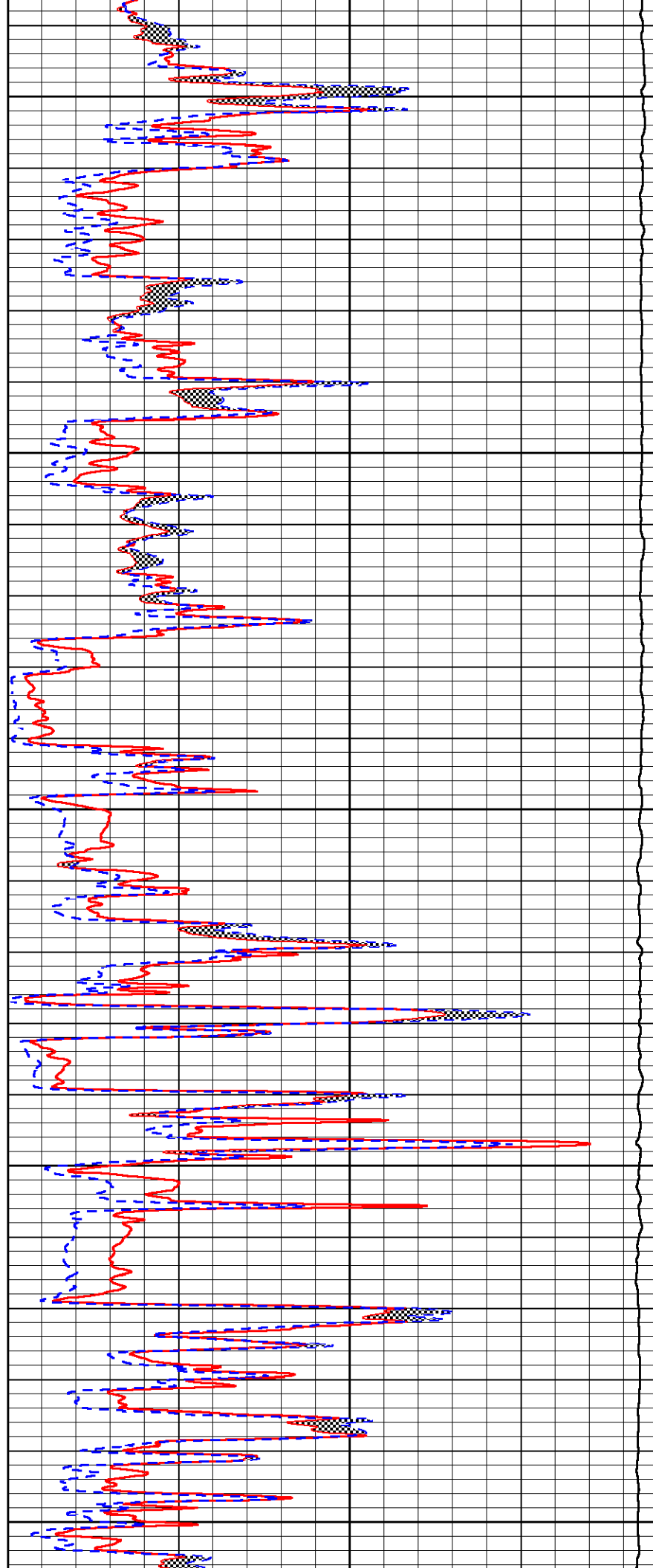
2000

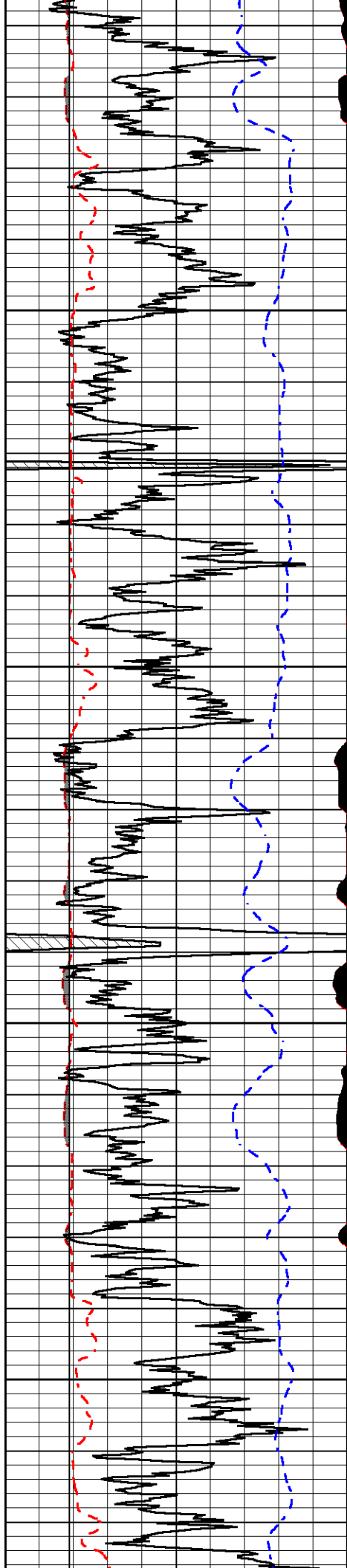
2050

2100

2150

2200



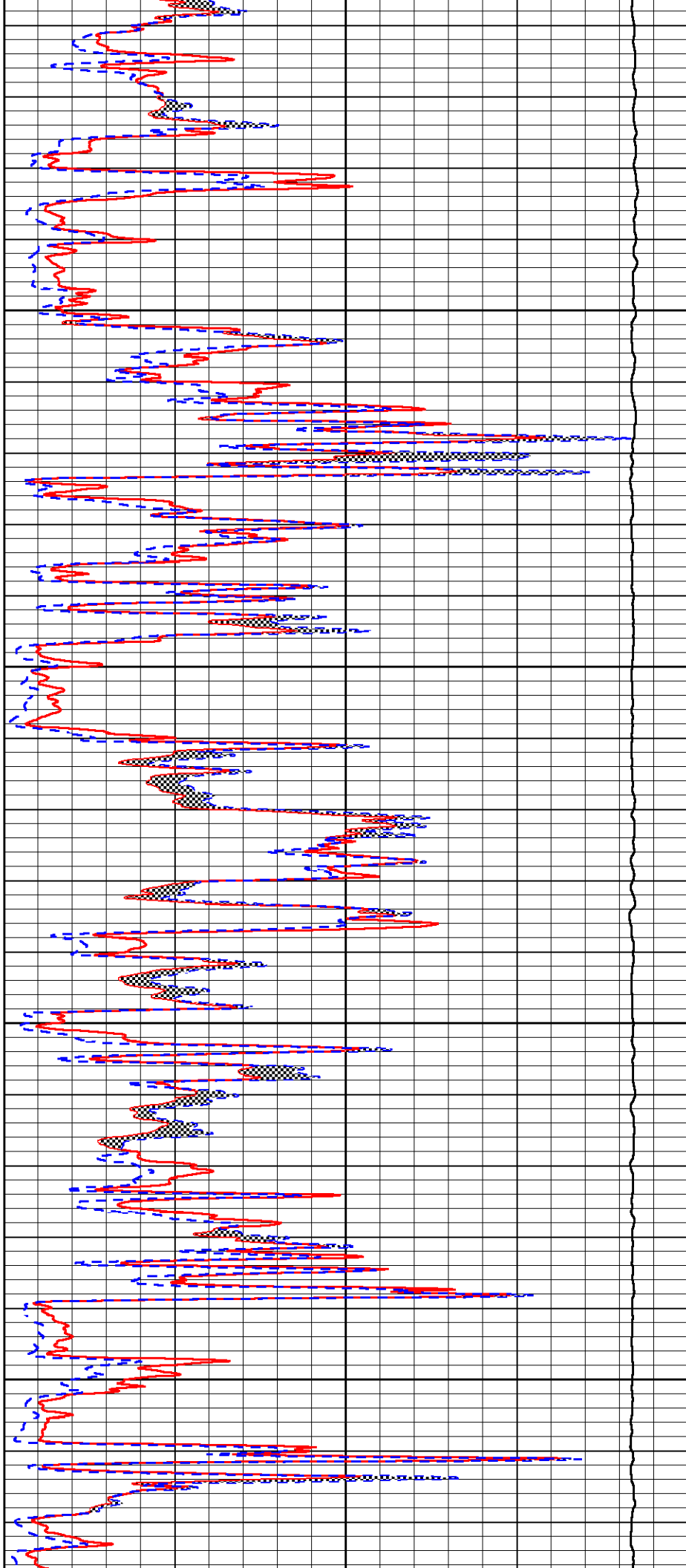


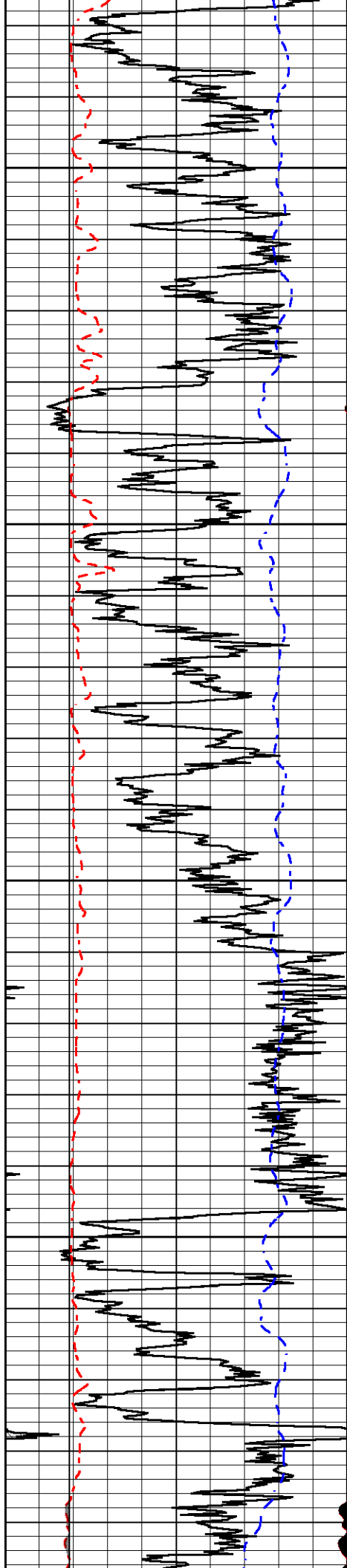
2250

2300

2350

2400



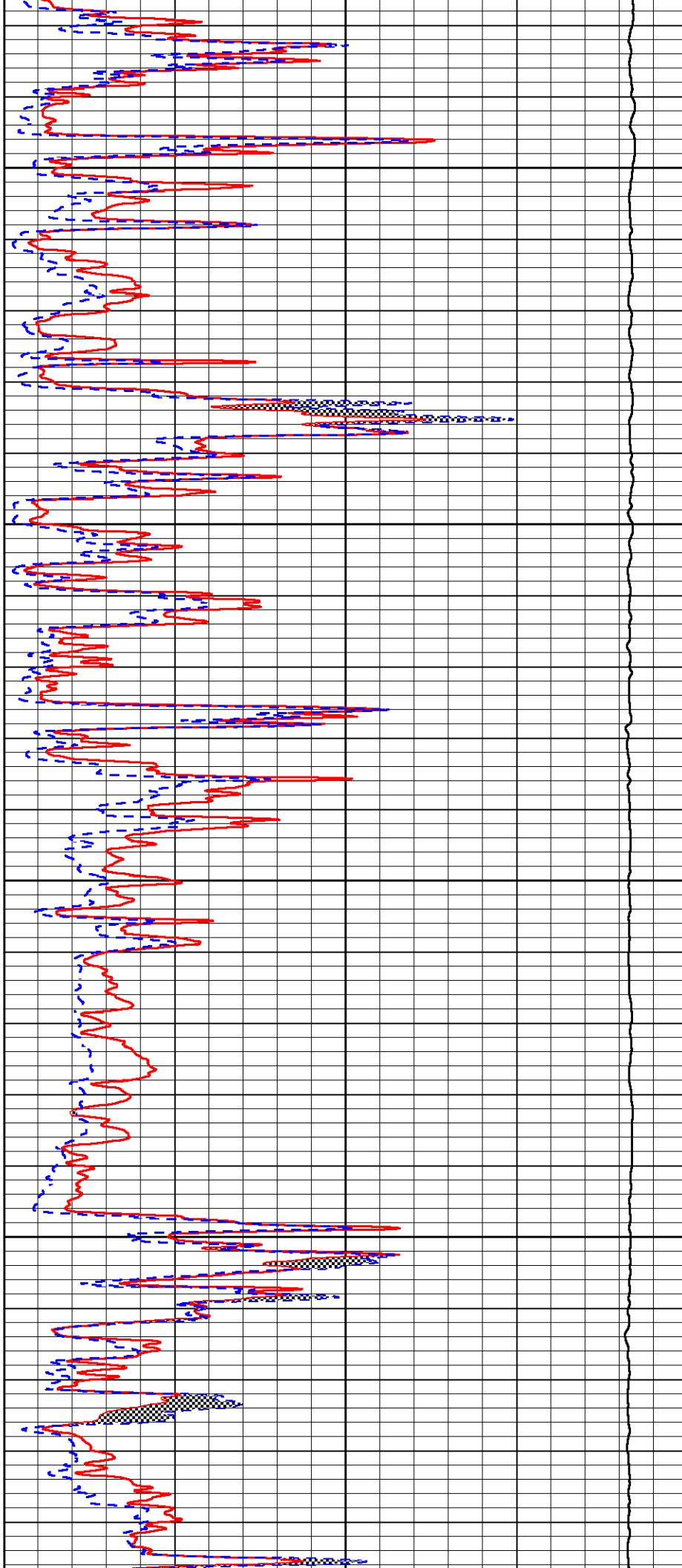


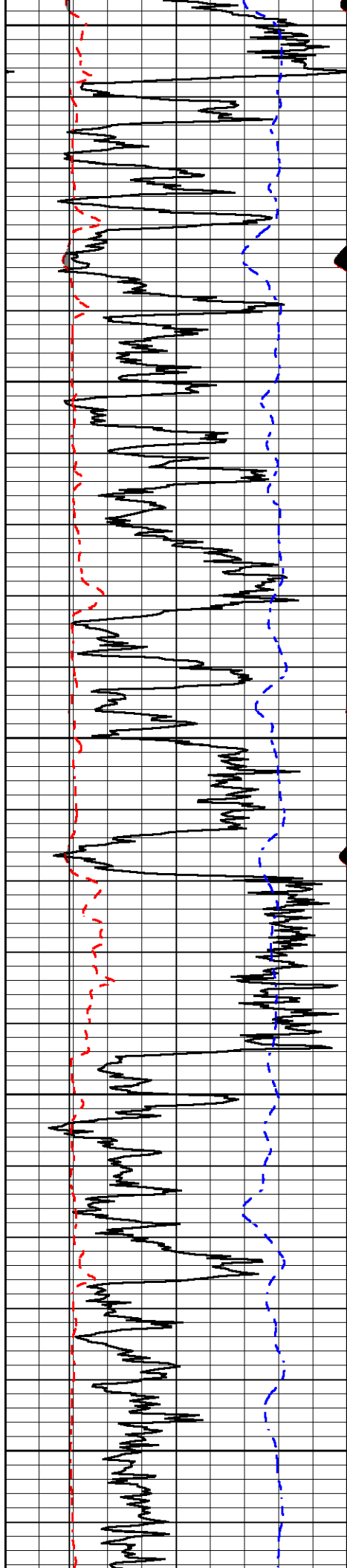
2450

2500

2550

2600





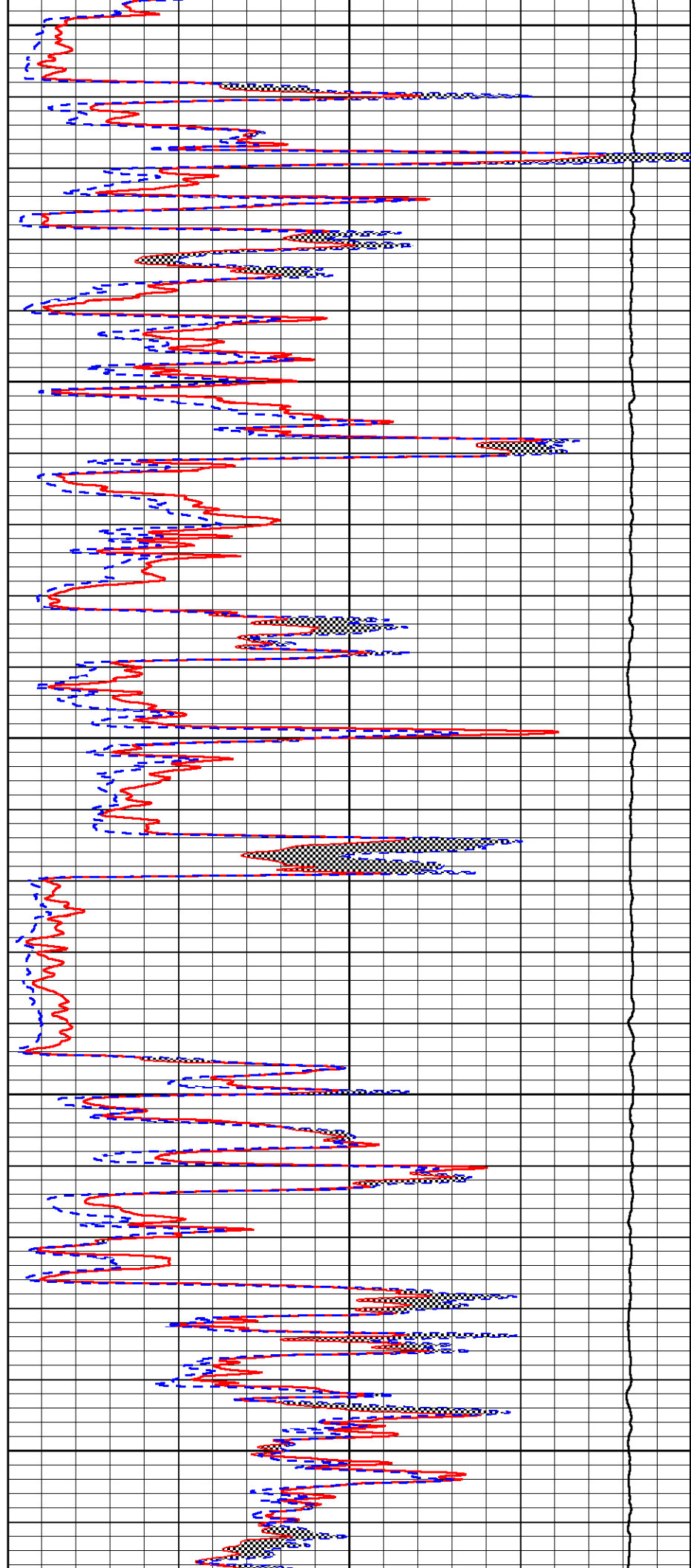
2650

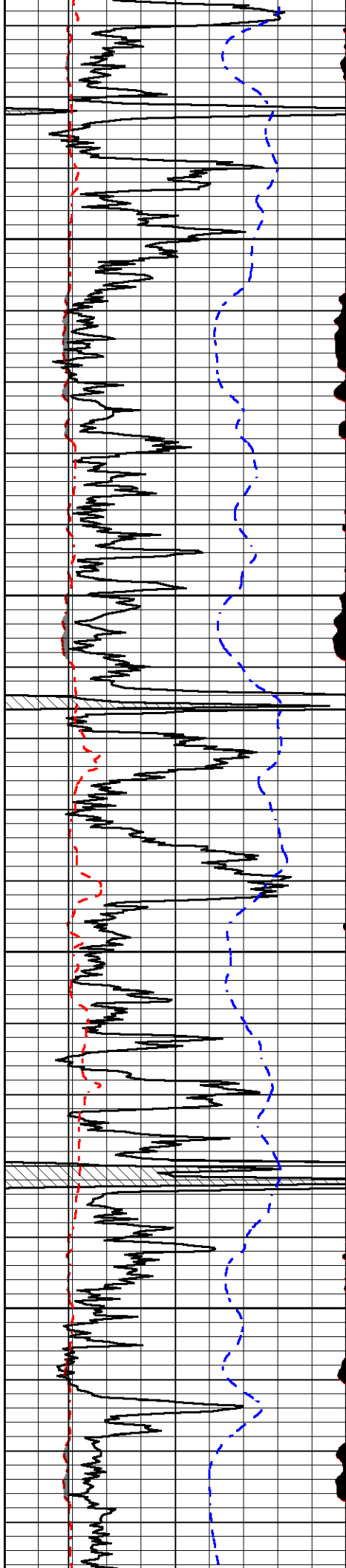
2700

2750

2800

2850



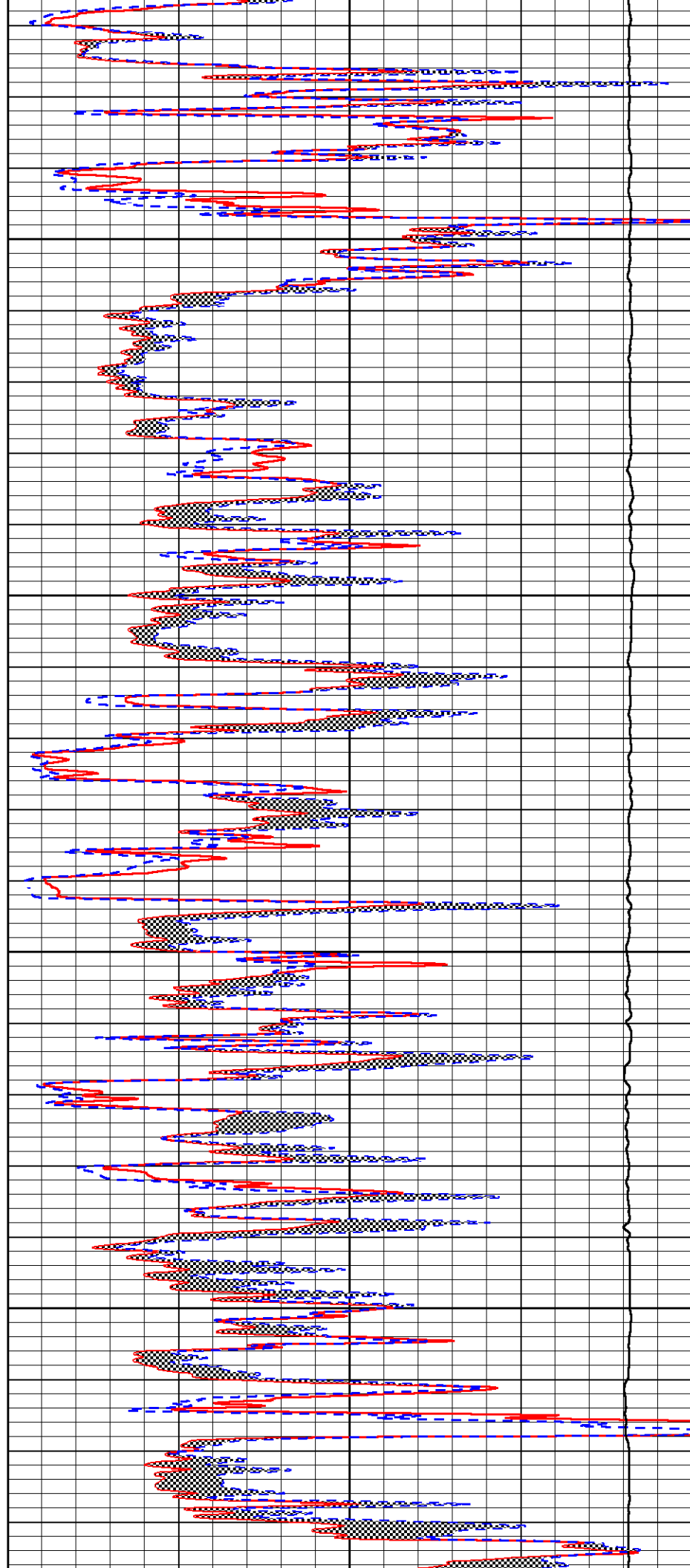


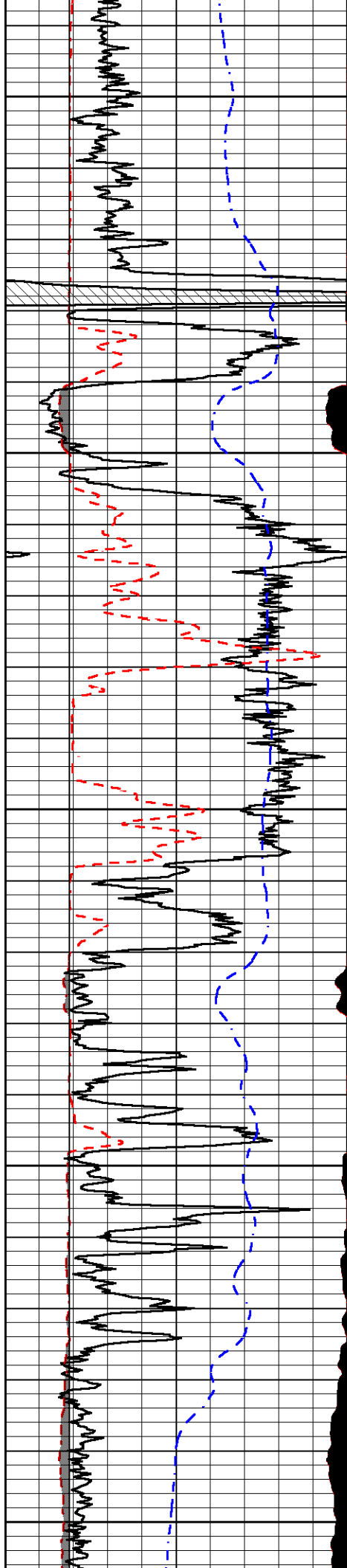
2900

2950

3000

3050





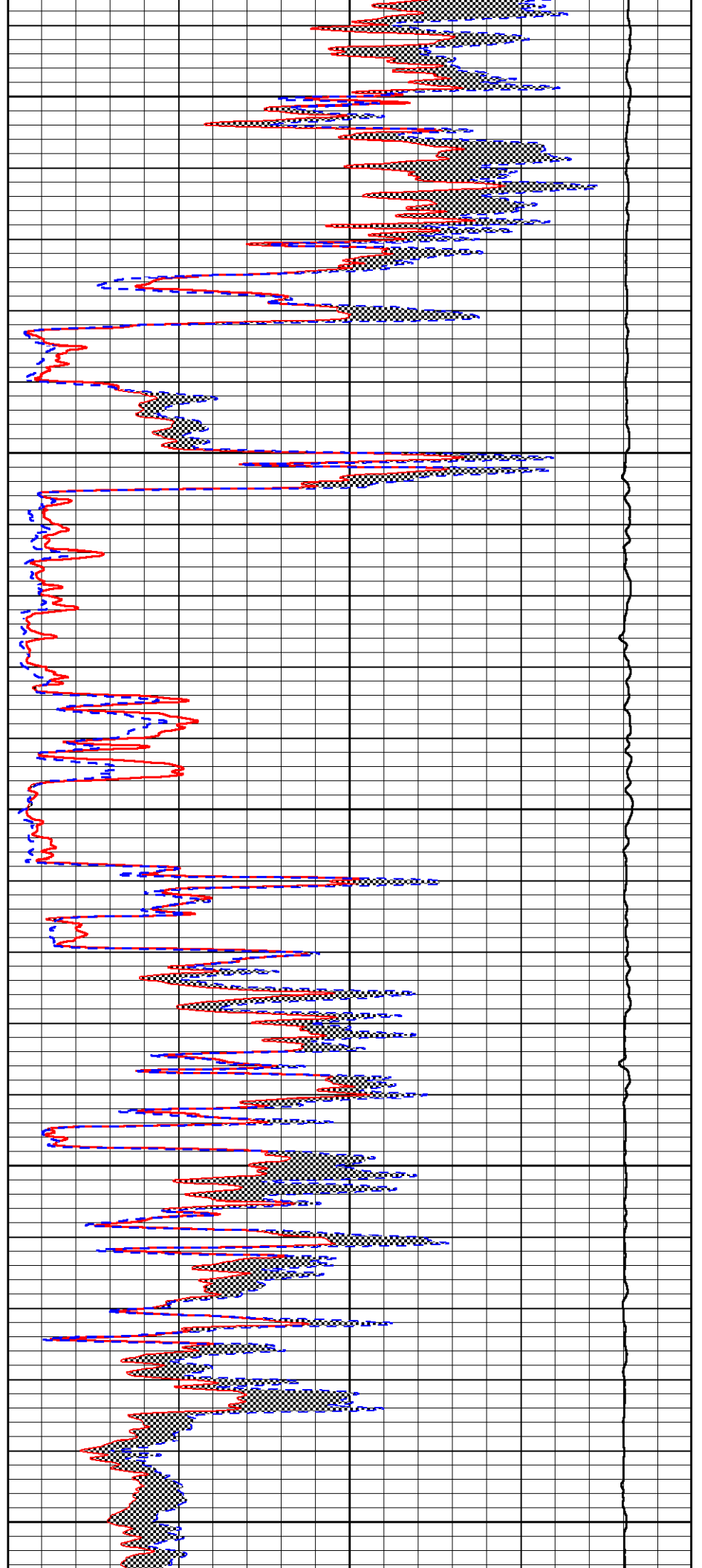
3100

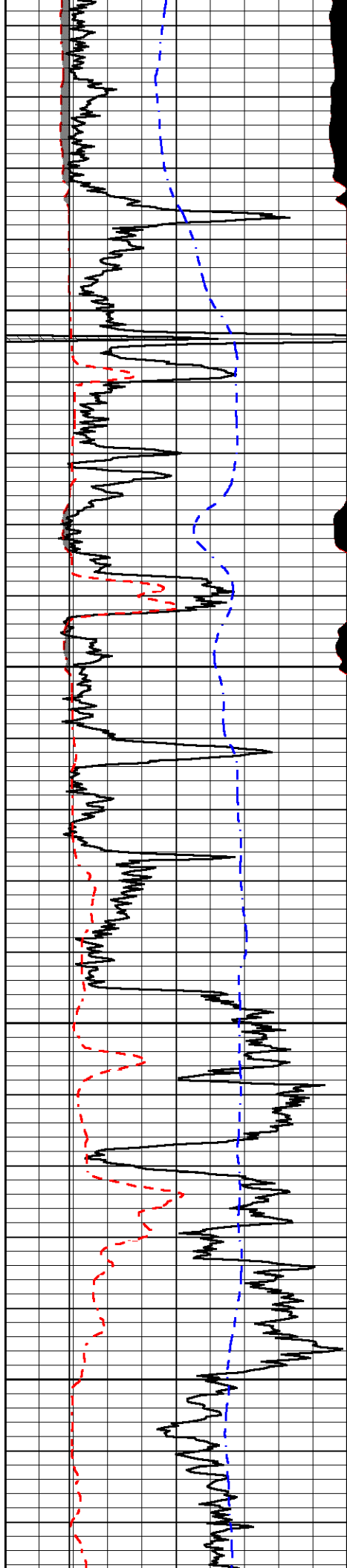
3150

3200

3250

3300



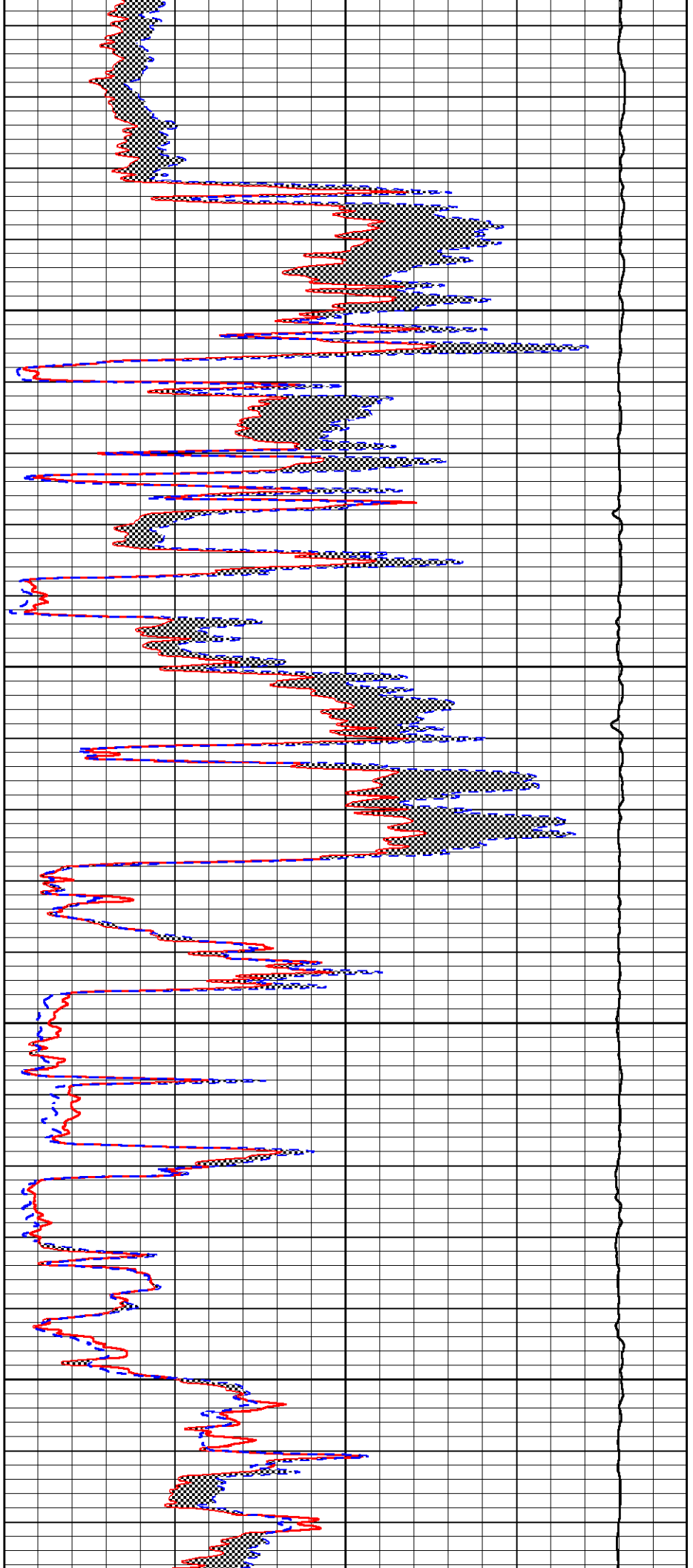


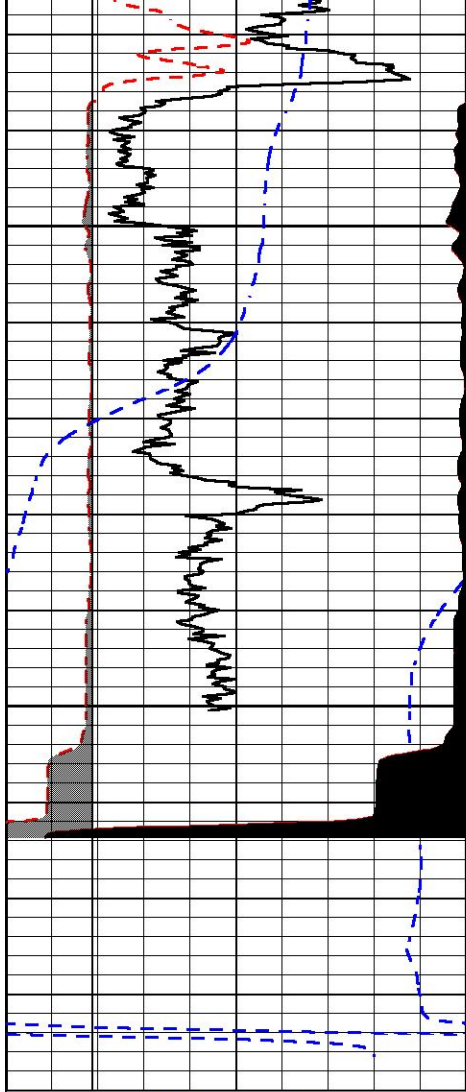
3350

3400

3450

3500

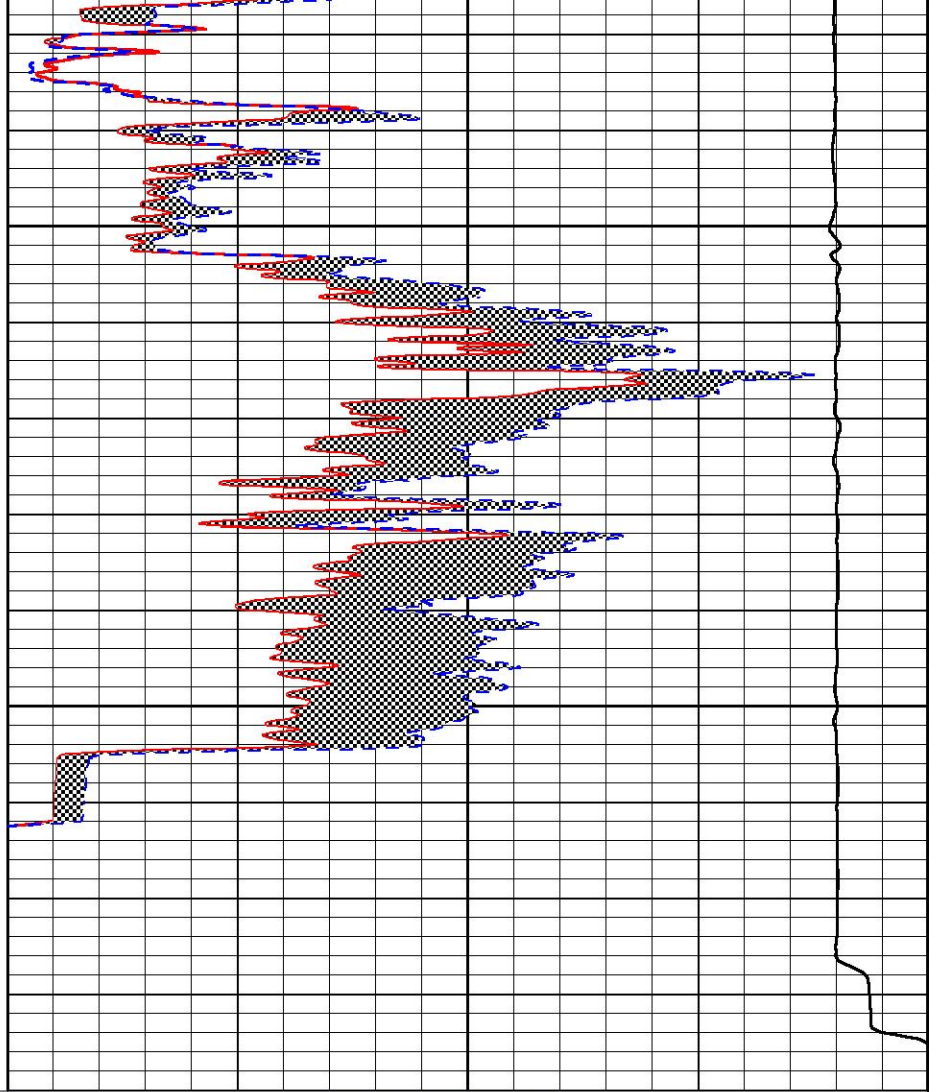




3550

3600

0	GAMMA RAY (GAPI)	150
6	MICRO CALIPER (in)	16
6	BIT SIZE (in)	16
-200	SP (mV)	0



0	MICRO INVERSE 1 X 1 (Ohm-m)	40
0	MICRO NORMAL 2" (Ohm-m)	40
15000	LINE TENSION (lb)	0

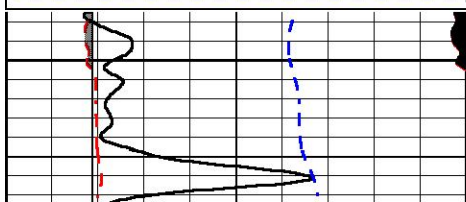


REPEAT SECTION

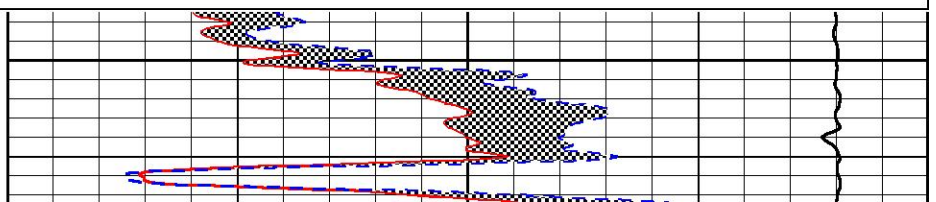
Database File fg_holl_leroy_farming_trust_2_30.db
 Dataset Pathname stack/pass3.1
 Presentation Format micro
 Dataset Creation Wed Nov 13 17:36:30 2019
 Charted by Depth in Feet scaled 1:240

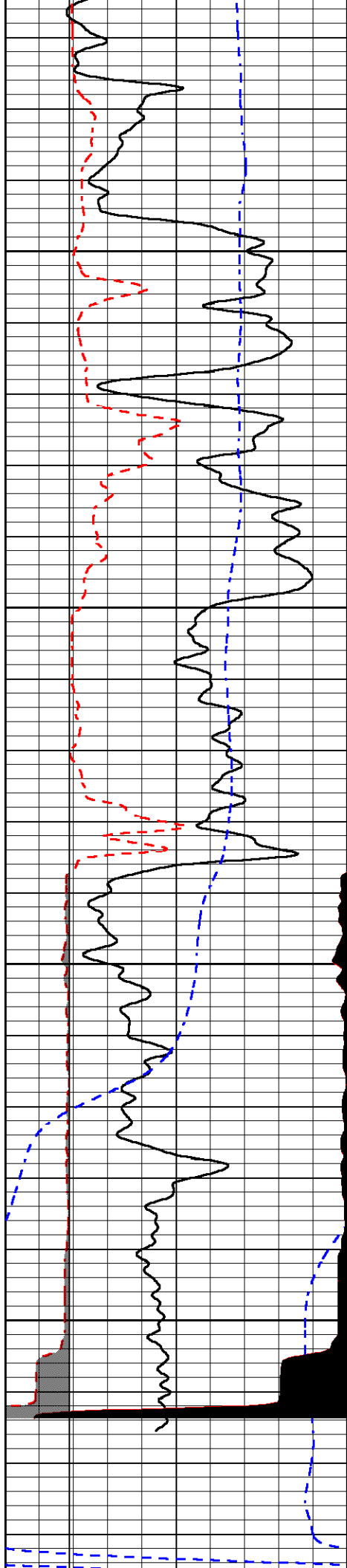
0	GAMMA RAY (GAPI)	150
6	MICRO CALIPER (in)	16
6	BIT SIZE (in)	16
-200	SP (mV)	0

0	MICRO INVERSE 1 X 1 (Ohm-m)	40
0	MICRO NORMAL 2" (Ohm-m)	40
15000	LINE TENSION (lb)	0



3400



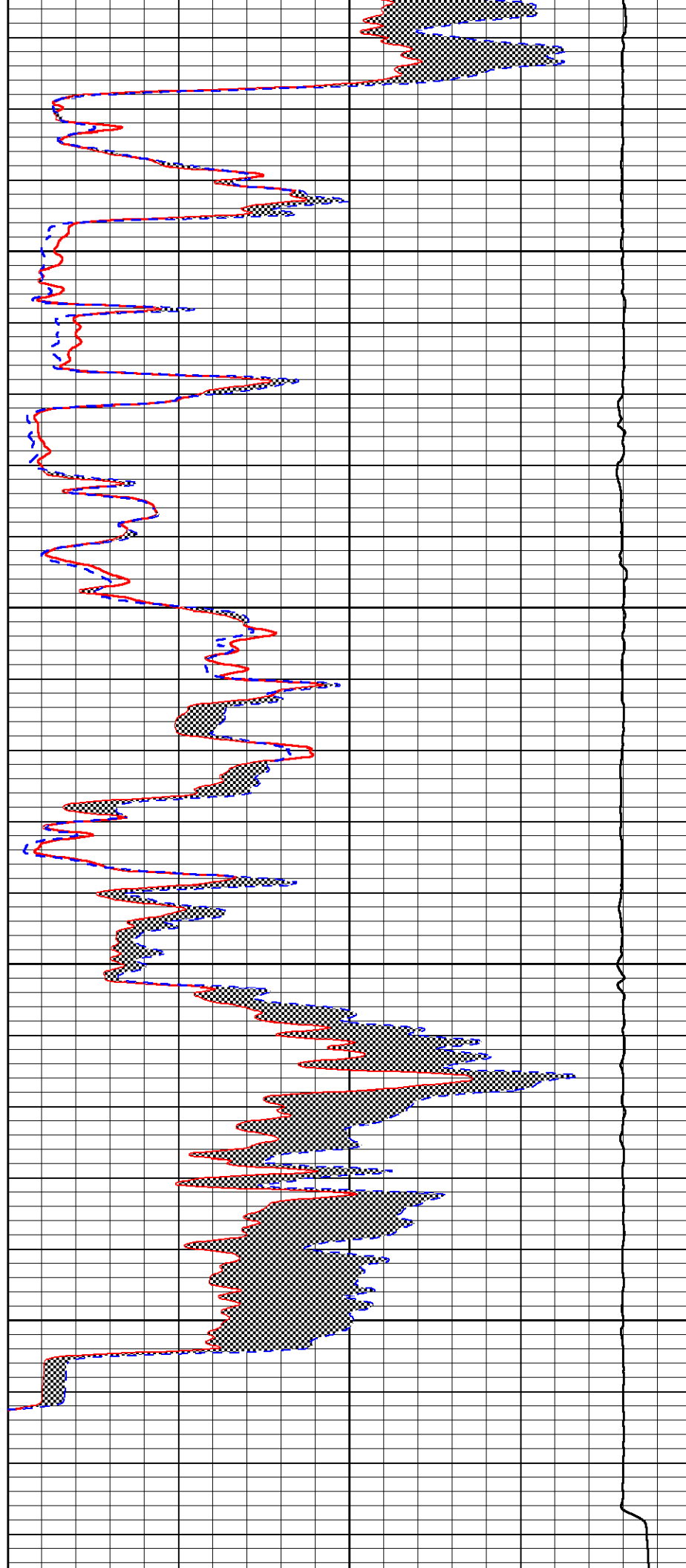


3450

3500

3550

3600



0	GAMMA RAY (GAPI)	150
6	MICRO CALIPER (in)	16
6	BIT SIZE (in)	16
-200	SP (mV)	0

0	MICRO INVERSE 1 X 1 (Ohm-m)	40
0	MICRO NORMAL 2" (Ohm-m)	40
15000	LINE TENSION (lb)	0

 <p>PIONEER Pioneer Energy Services</p>	Company	F.G. HOLL COMPANY, LLC
	Well	LEROY FARMING TRUST #2-30
	Field	WILDCAT
	County	BARTON
	State	KANSAS