



**BOREHOLE COMPENSATED
SONIC LOG**

Company **F.G. HOLL COMPANY, LLC**
 Well **LEROY FARMING TRUST #2-30**
 Field **WILDCAT**
 County **BARTON**
 State **KANSAS**

Company **F.G. HOLL COMPANY, LLC**
 Well **LEROY FARMING TRUST #2-30**
 Field **WILDCAT**
 County **BARTON** State **KANSAS**

Location: **API #: 15-009-26279-00-00**
945' FNL & 1400' FWL
SEC 30 TWP 19S RGE 14W
 Permanent Datum **GROUND LEVEL Elevation 1907'**
 Log Measured From **KELLY BUSHING**
 Drilling Measured From **KELLY BUSHING**
 Other Services **CNL/CDL MEL/DIL**
 Elevation **K.B. 1915'**
D.F. N/A
G.L. 1907'

Date	11/13/2019	
Run Number	TWO	
Type Log	BHCS	
Depth Driller	3625'	
Depth Logger	3626'	
Bottom Logged Interval	3615'	
Top Logged Interval	800'	
Type Fluid In Hole	CHEMICAL	
Salinity, PPM CL	5900	
Density	9.3	
Level	FULL	
Max. Rec. Temp. F	112 DEG/F	
Operating Rig Time	5 HOURS	
Equipment -- Location	P-108 HAYS	
Recorded By	J. HENRICKSON	
Witnessed By	RENE HUSTEAD	

Borehole Record		Casing Record					
Run No.	Bit	From	To	Size	Wgt.	From	To
ONE	12.25"	0	844'	8.625"	23#	0	844'
TWO	7.875"	844'					

<<< Fold Here >>>

All interpretations are opinions based on inferences from electrical or other measurements and Pioneer Wireline Services, LLC cannot and does not guarantee the accuracy or correctness of any interpretation, and Pioneer Wireline Services, LLC will not be liable or responsible for any loss, costs, damages, or expenses incurred or sustained by anyone resulting from any interpretation made by any of our officers, agents or employees.

Comments

N/A DENOTES NOT AVAILABLE OR NON-APPLICABLE.
 HEIZER KANSAS
 1 WEST, 3 1/2 SOUTH, 1 WEST, 1/4 SOUTH, EAST INTO

Log Measured From: **KELLY BUSHING** 8 Ft. Above Permanent Datum

THANK YOU FOR USING PIONEER ENERGY SERVICES
www.pioneerenergy.com 785-625-3858

Your Pioneer Energy Services Crew	This Log Record Was Witnessed By
Engineer: J. HENRICKSON	Primary Witness: RENE HUSTEAD
Operator:	Secondary Witness:
Operator:	Secondary Witness:
Operator:	Secondary Witness:

Log Variables

DatabaseC:\ProgramData\Warrior\Data\fg_holl_leroy_farming_trust_2_30.db
Dataset field/well/stack/pass4.1/_vars_

Top - Bottom

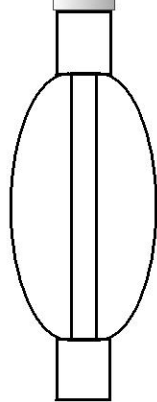
A	BOREID in	BOTTEMP degF	CASEOD in	CASETHCK in	FLUIDDEN g/cc	M	MATRXDEN g/cc
1	7.875	112	4.5	0	1	2	2.71
NPORSEL	PERFS	SNDERR mmho/m	SNDERRM mmho/m	SPSHIFT mV	SRFTEMP degF	SZCOR	TDEPTH ft
Limestone	0	0	0	160	0	Off	3625

Variable Description

A : Cement Factor (a)
BOREID : Borehole I.D.
BOTTEMP : Bottom Hole Temperature
CASEOD : Casing O.D.
CASETHCK : Casing Thickness
FLUIDDEN : Fluid Density
M : Cement Exp (m)
MATRXDEN : Matrix Density

NPORSEL : Neutron Porosity Curve Select
PERFS : Perforation Flag
SNDERR : Deep Sonde Error Correction
SNDERRM : Medium Sonde Error Correction
SPSHIFT : S.P. Baseline Offset
SRFTEMP : Surface Temperature
SZCOR : CN Size Cor. ?
TDEPTH : Total Depth

Sensor	Offset (ft)	Schematic	Description	Length (ft)	O.D. (in)	Weight (lb)
MCAL MI MN	22.50 22.50 22.50		ML-Armadillo (Armadillo-1) Pengo micro log tool mandrel with Armadillo Electronics	5.00	3.50	100.00
WVF4 WVF1	13.50 13.50		SLT-PENGO (0001)	16.00	3.50	300.00
WVF3 WVF2	11.50 11.50					



CENT-PENGO

5.50

3.00

70.00

Dataset: fg_holl_leroy_farming_trust_2_30.db: field/well/SONMEL/pass2
 Total length: 26.50 ft
 Total weight: 470.00 lb
 O.D.: 3.50 in

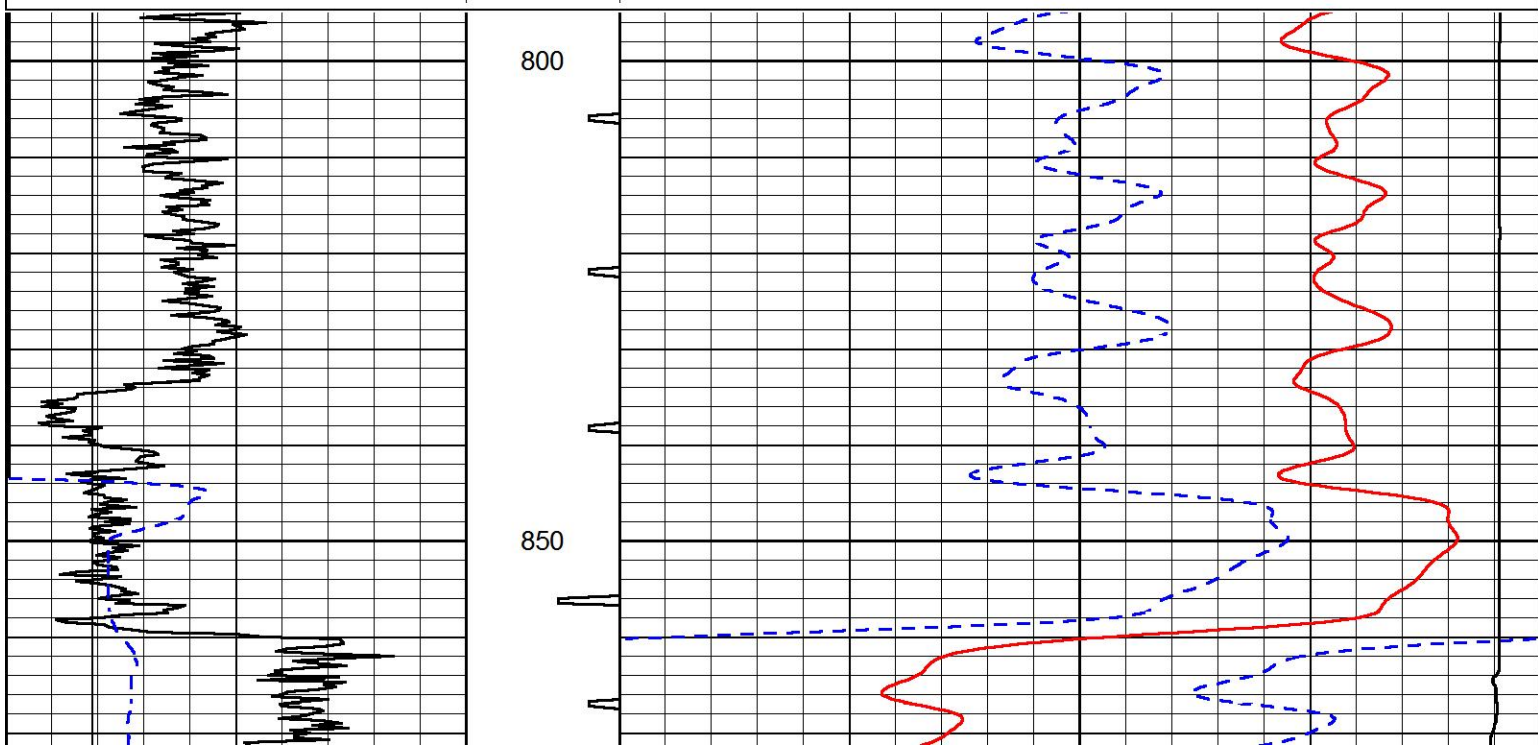
PIONEER
 Pioneer Energy Services

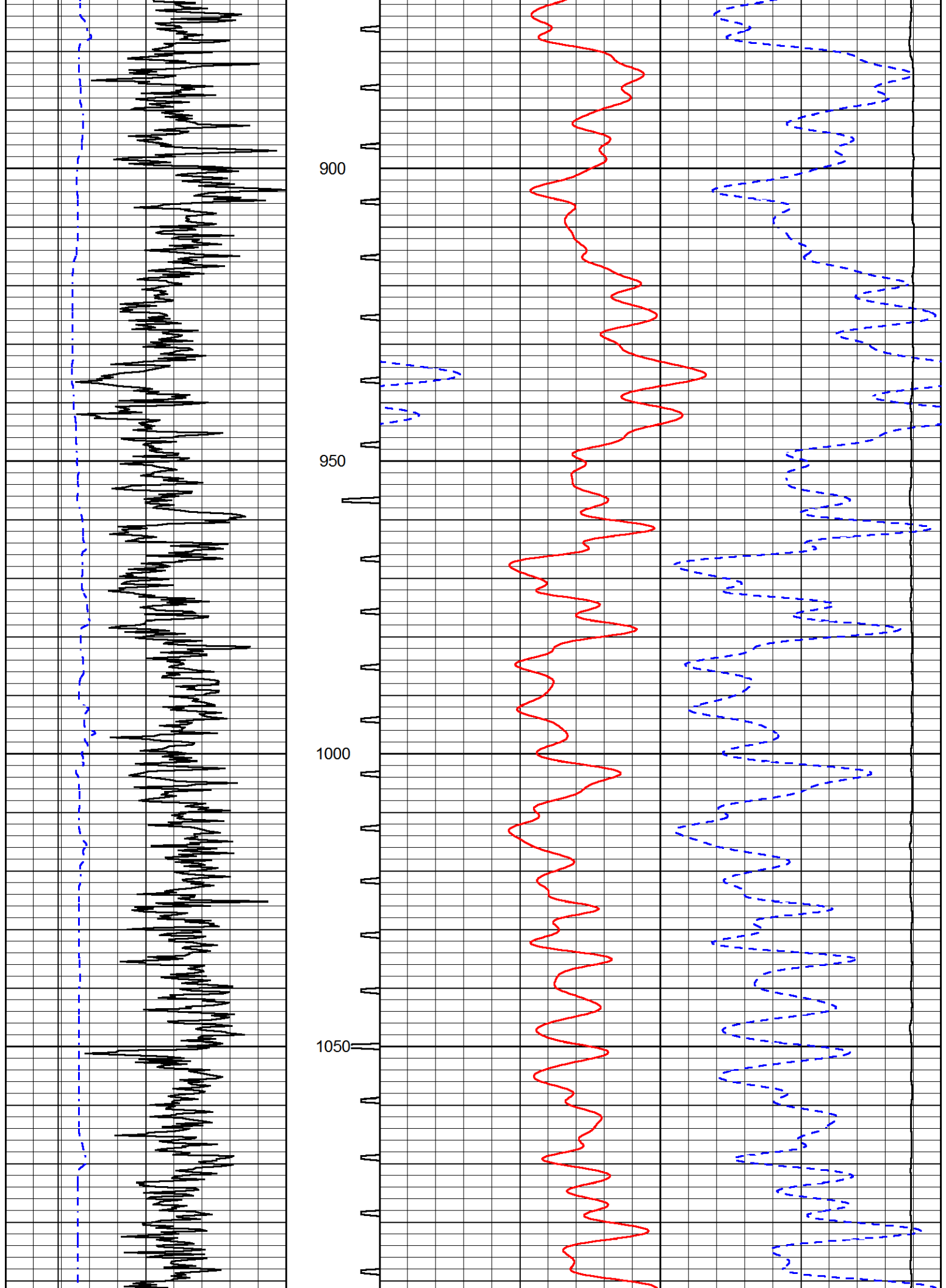


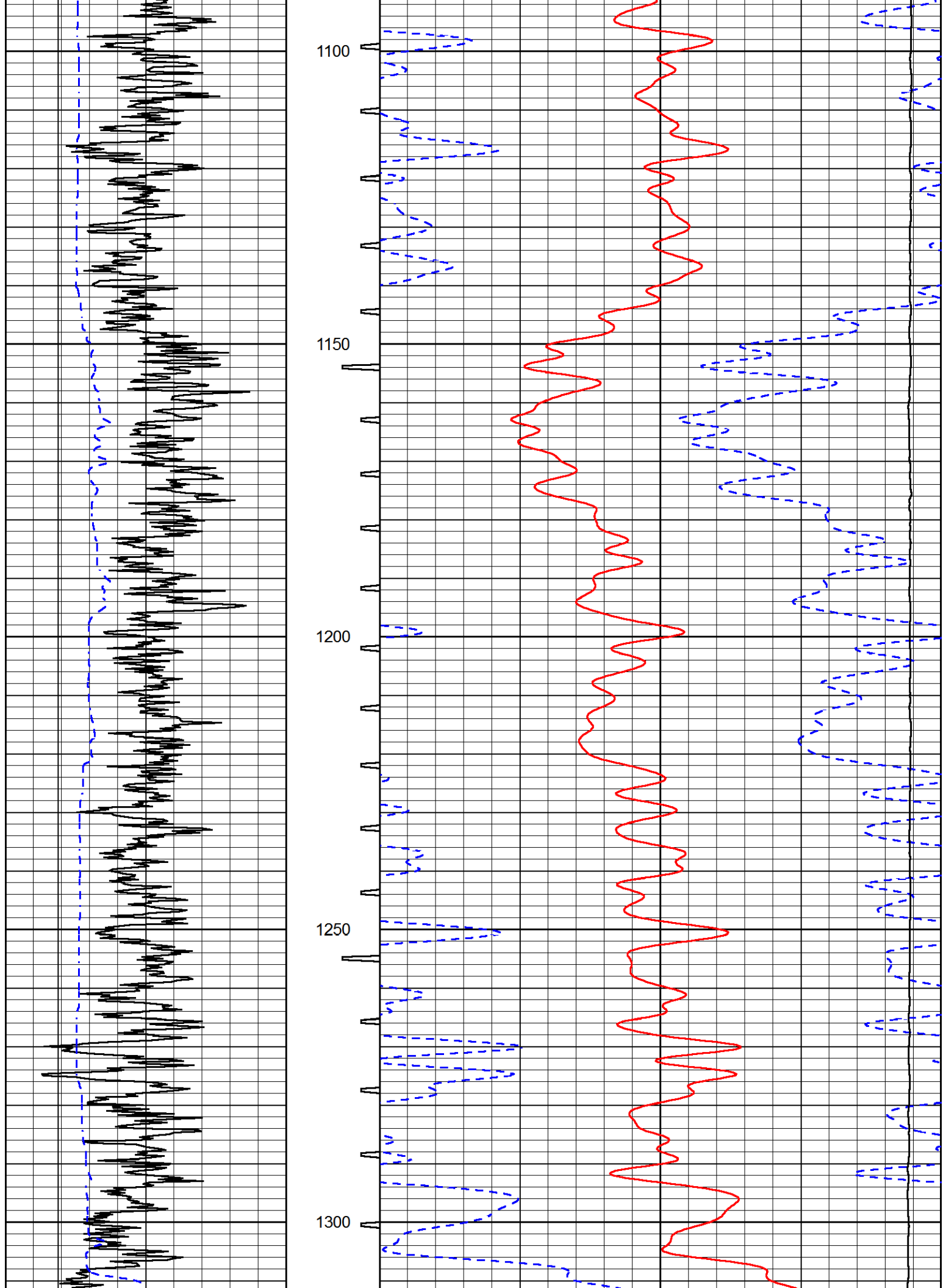
MAIN PASS

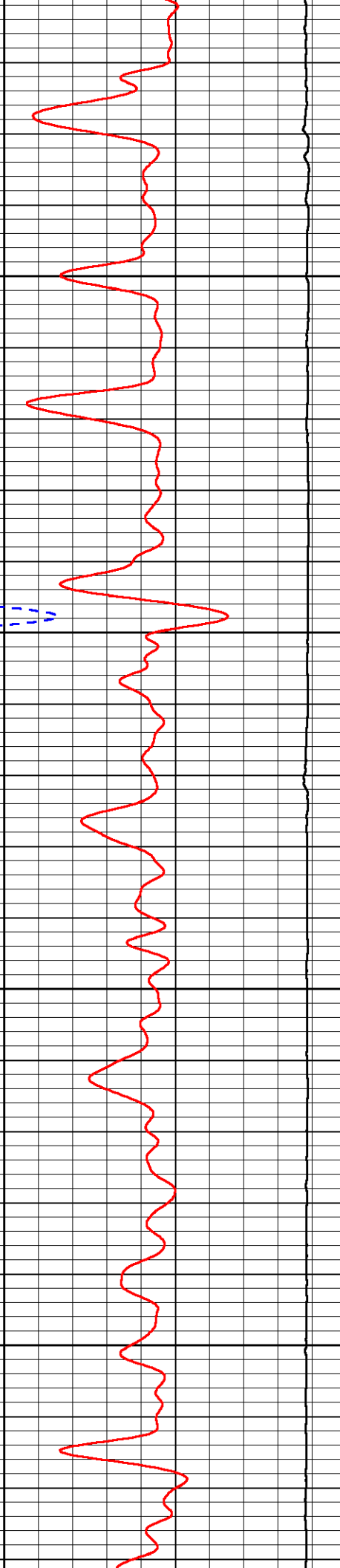
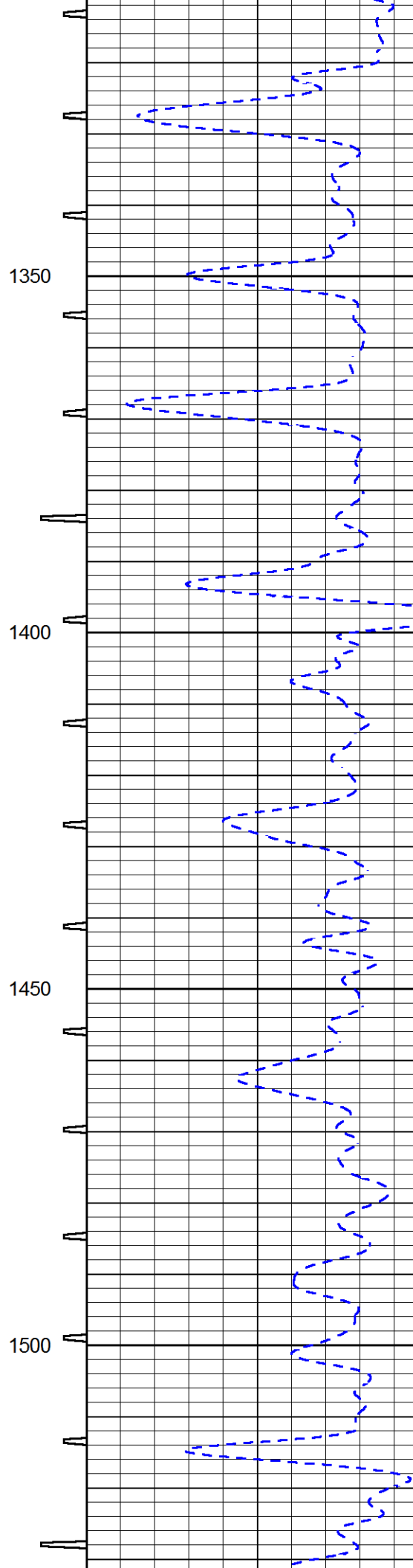
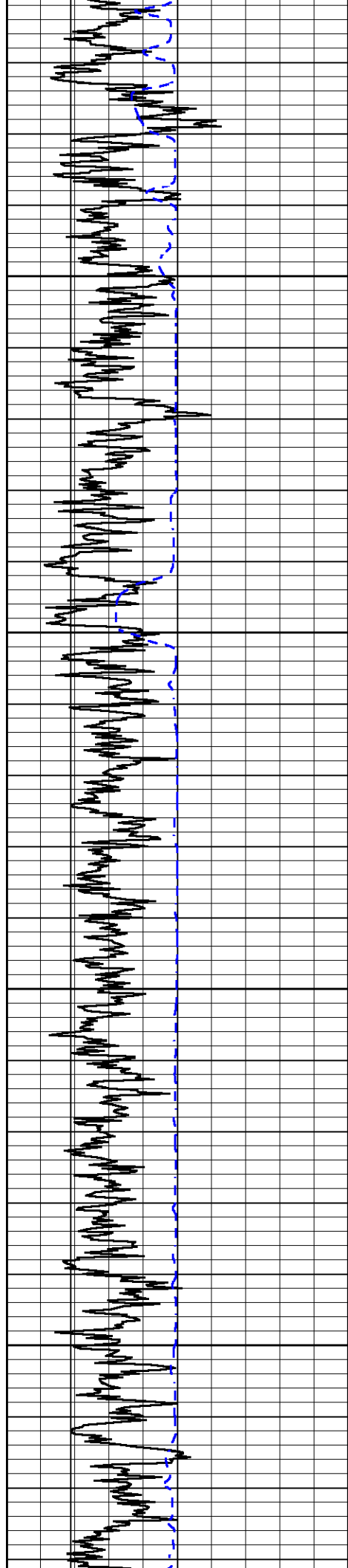
Database File fg_holl_leroy_farming_trust_2_30.db
 Dataset Pathname stack/pass4.1
 Presentation Format sonic
 Dataset Creation Wed Nov 13 18:37:58 2019
 Charted by Depth in Feet scaled 1:240

0	GAMMA RAY (GAPI)	150	SONIC INT	140	DELTA TIME (usec/ft) (usec/ft)	40
6	CALIPER (in)	16	TRAVEL TIME	30	SONIC POROSITY (pu)	-10
6	BIT SIZE	16	(msec)	15000	LINE TENSION (lb)	0







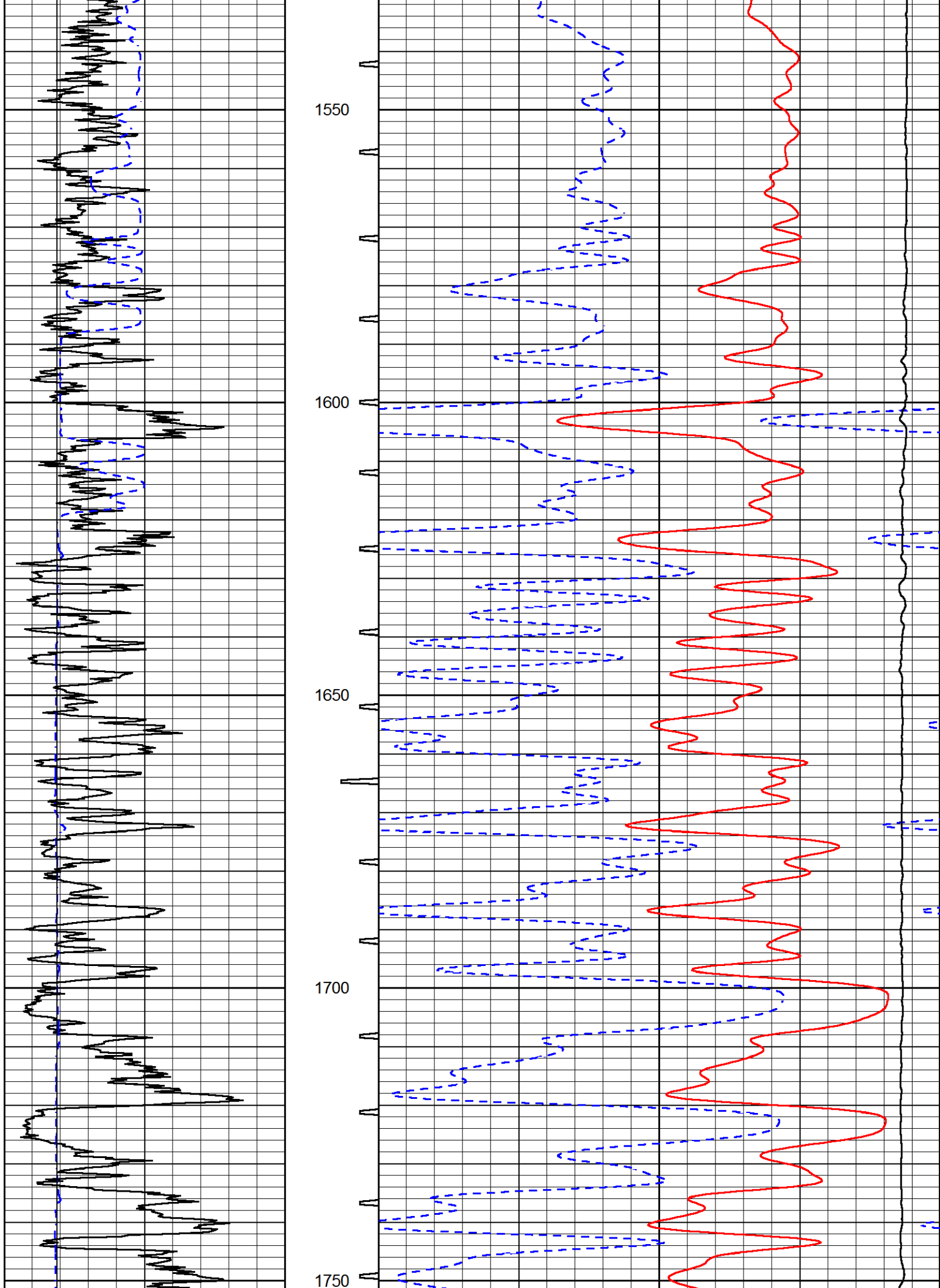


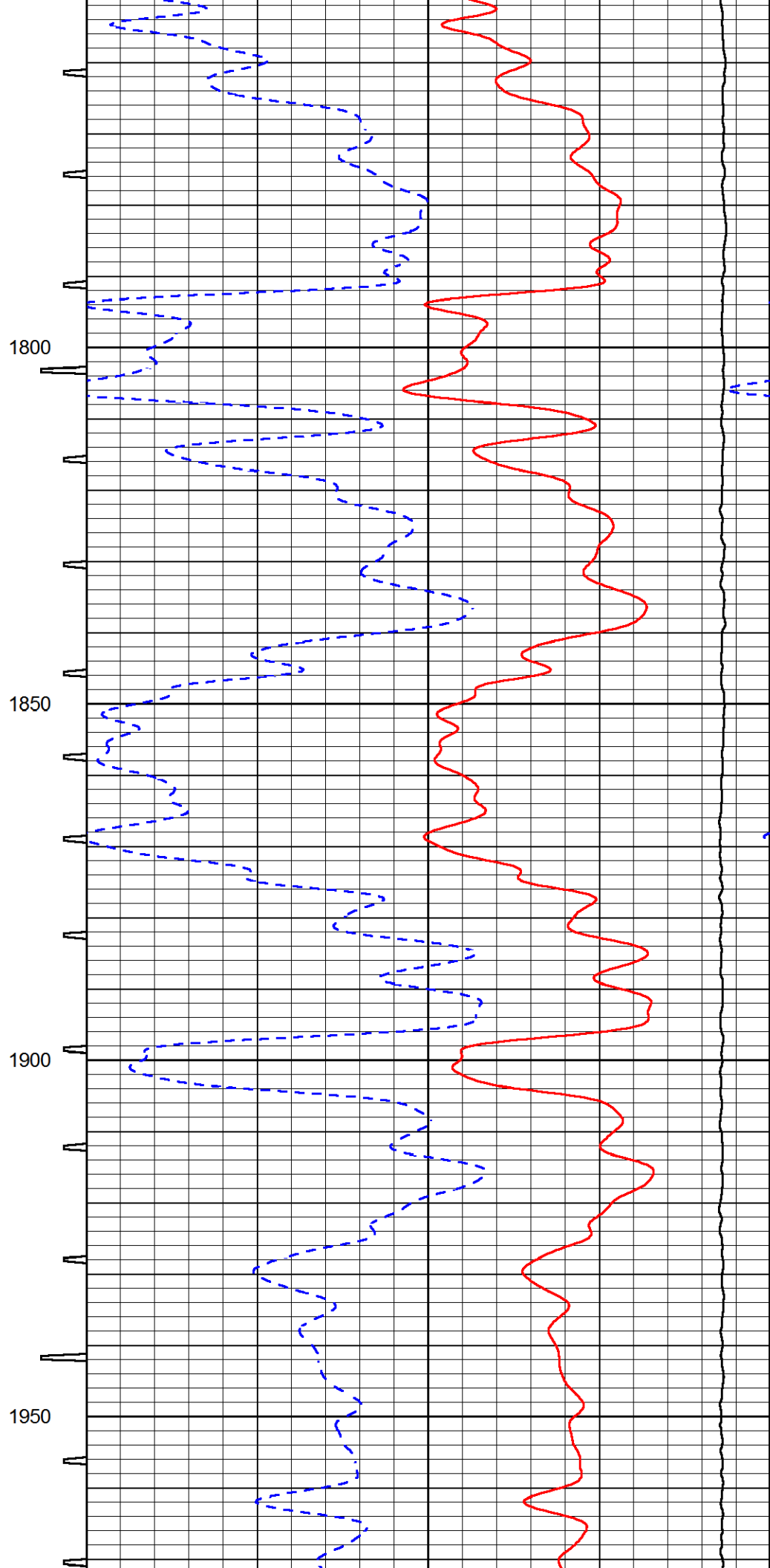
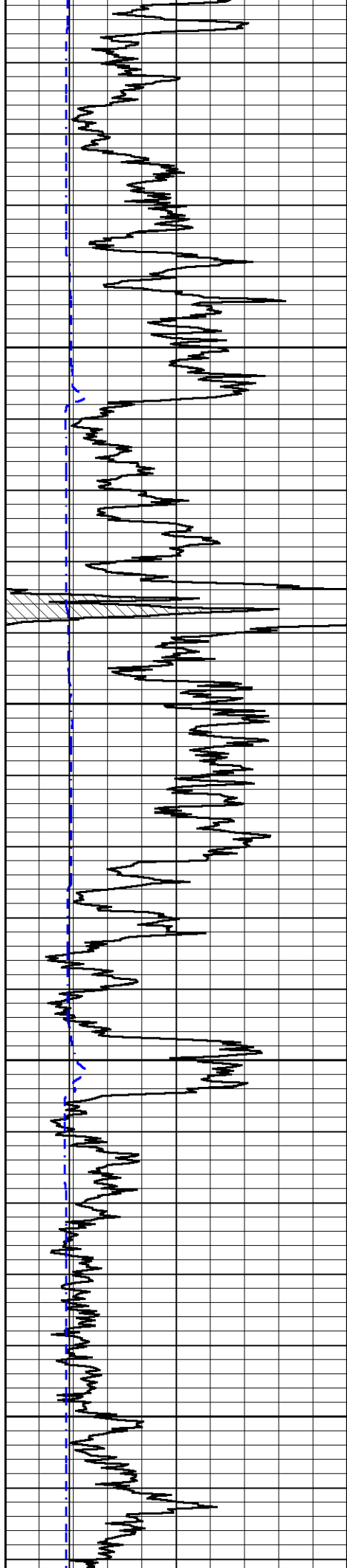
1350

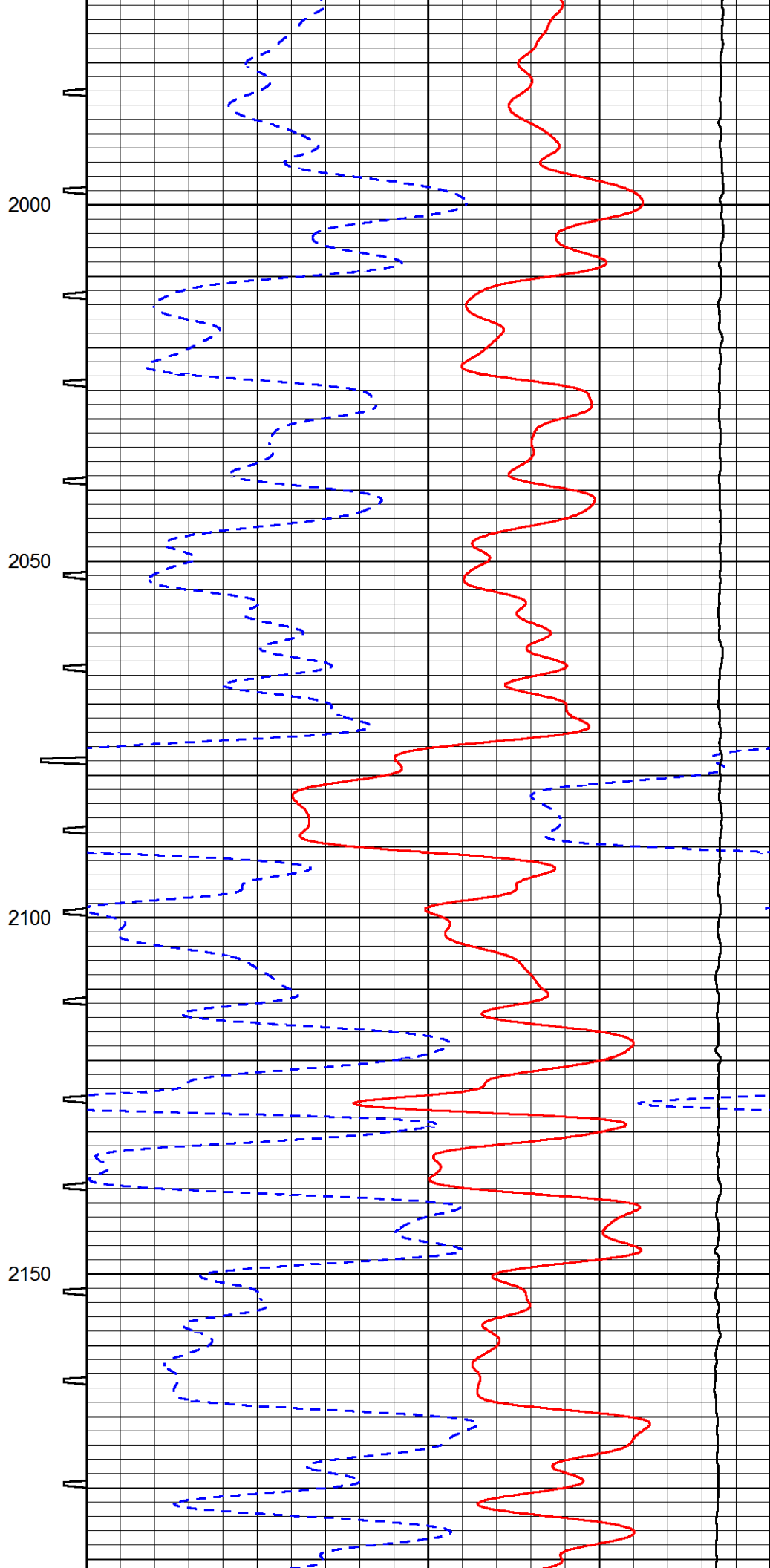
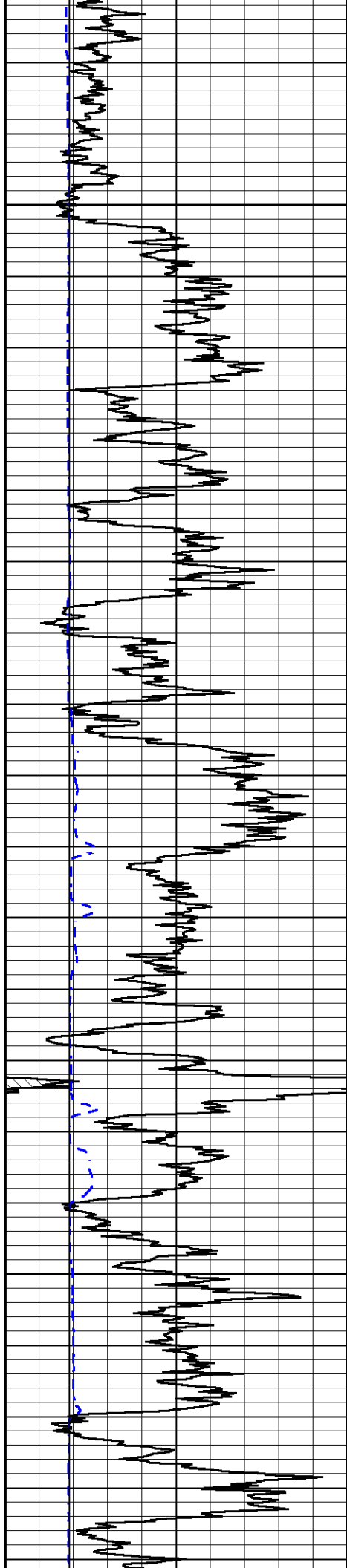
1400

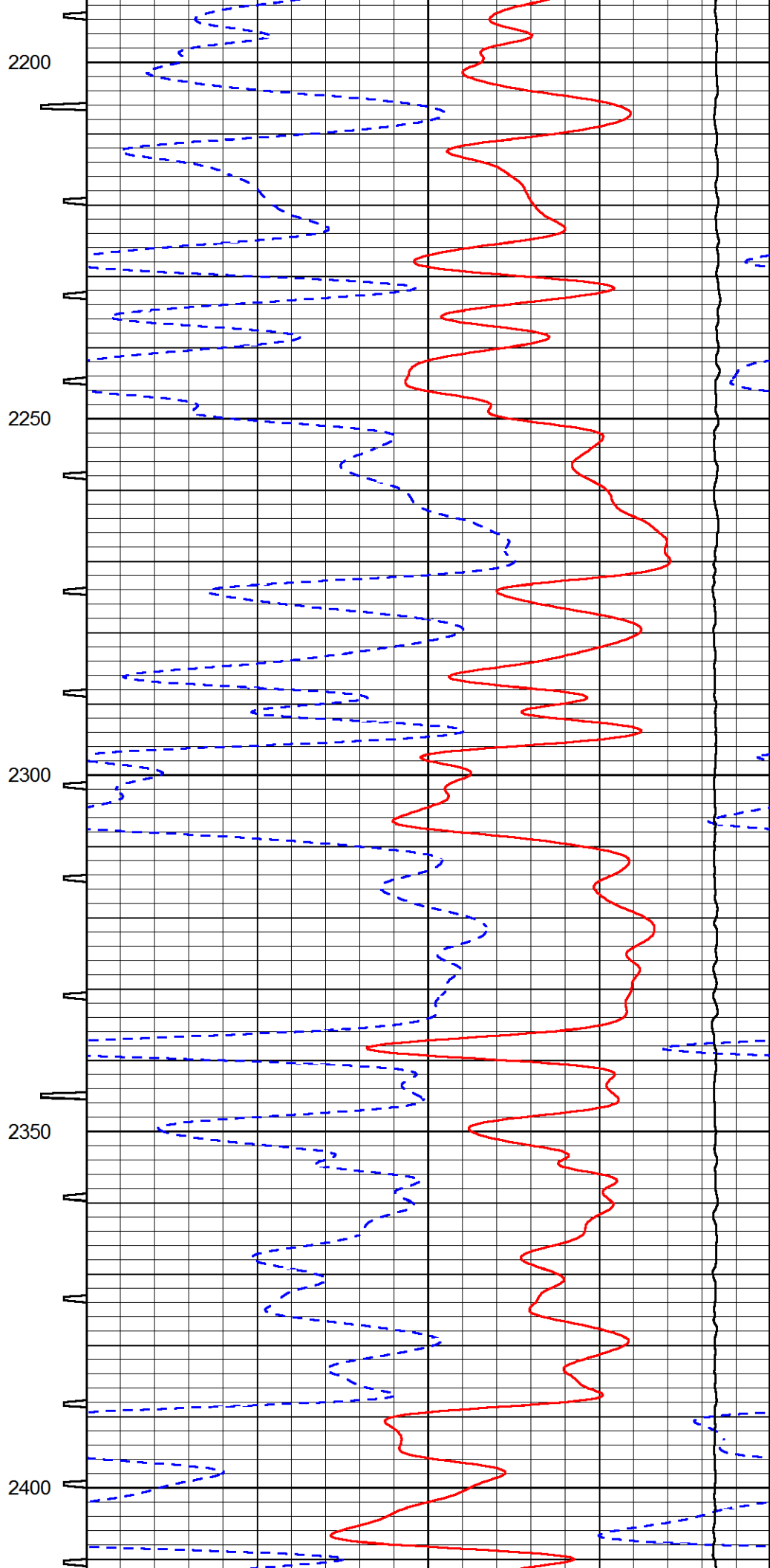
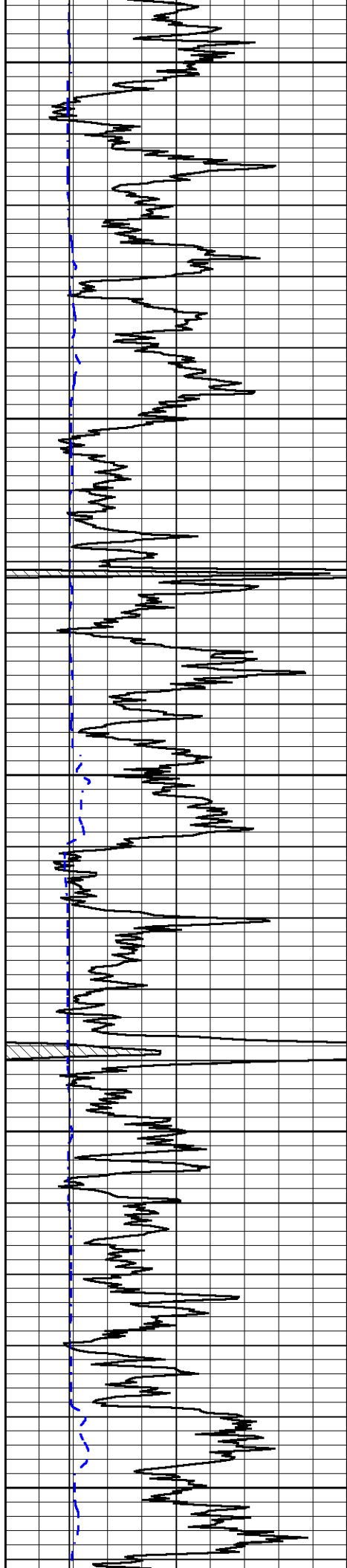
1450

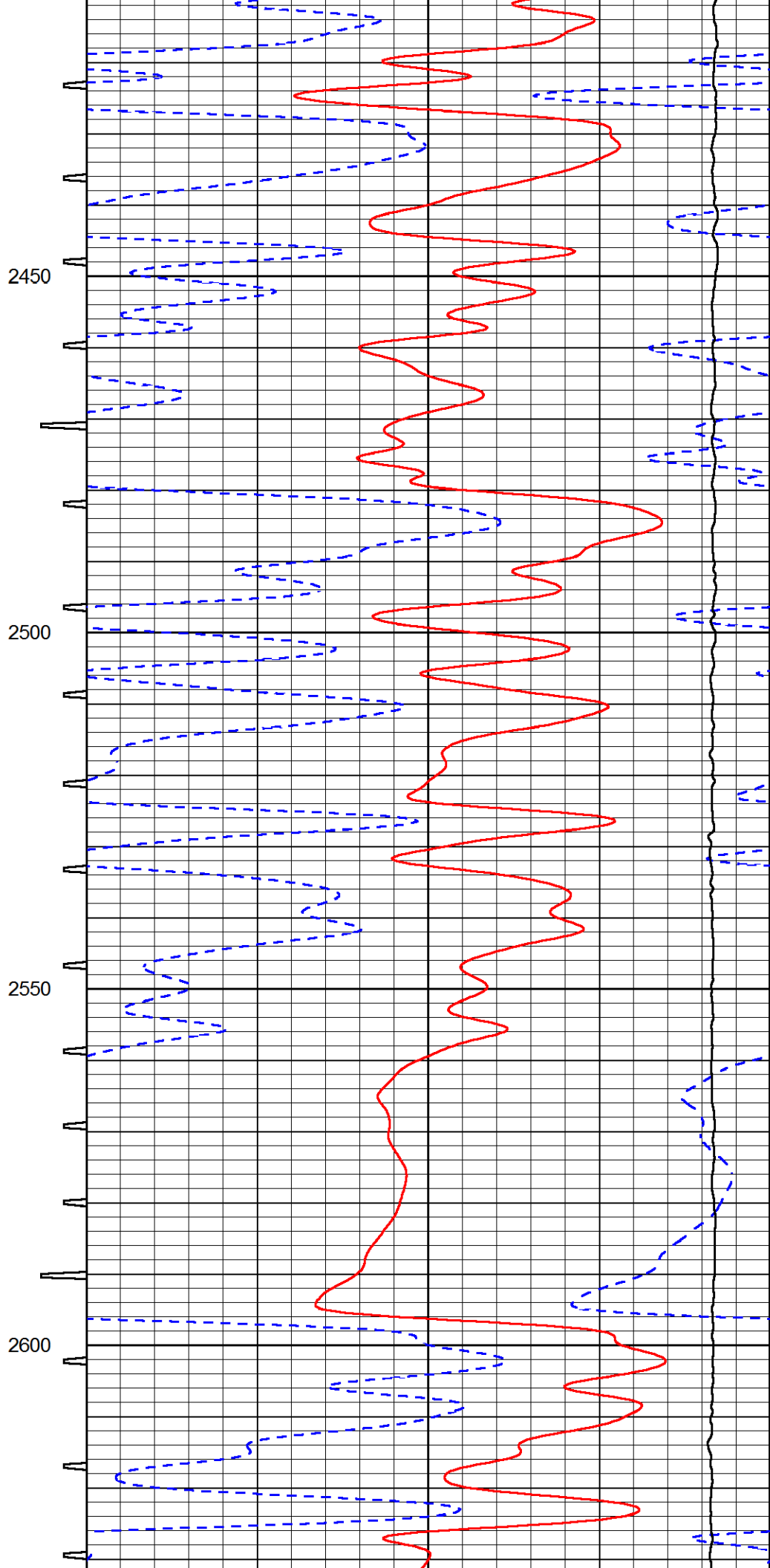
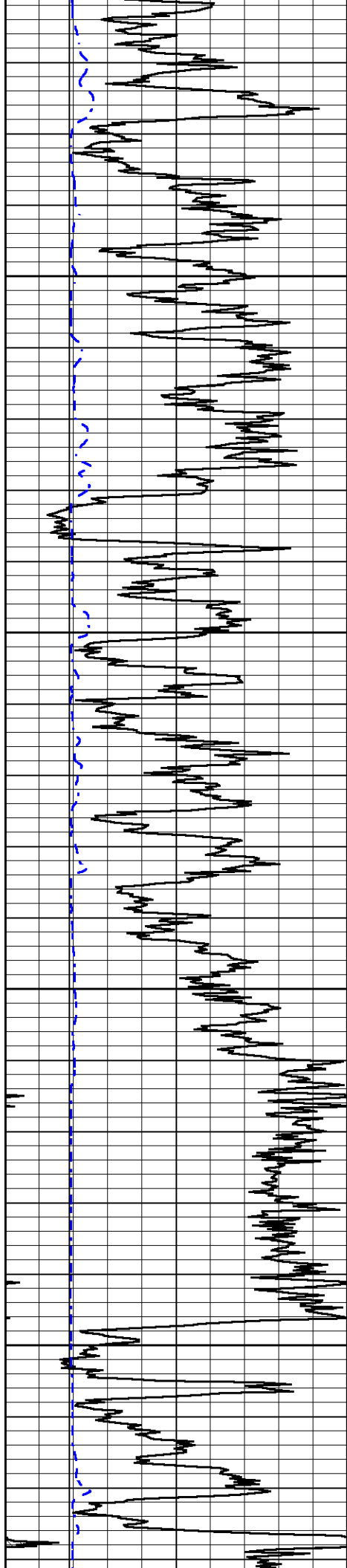
1500

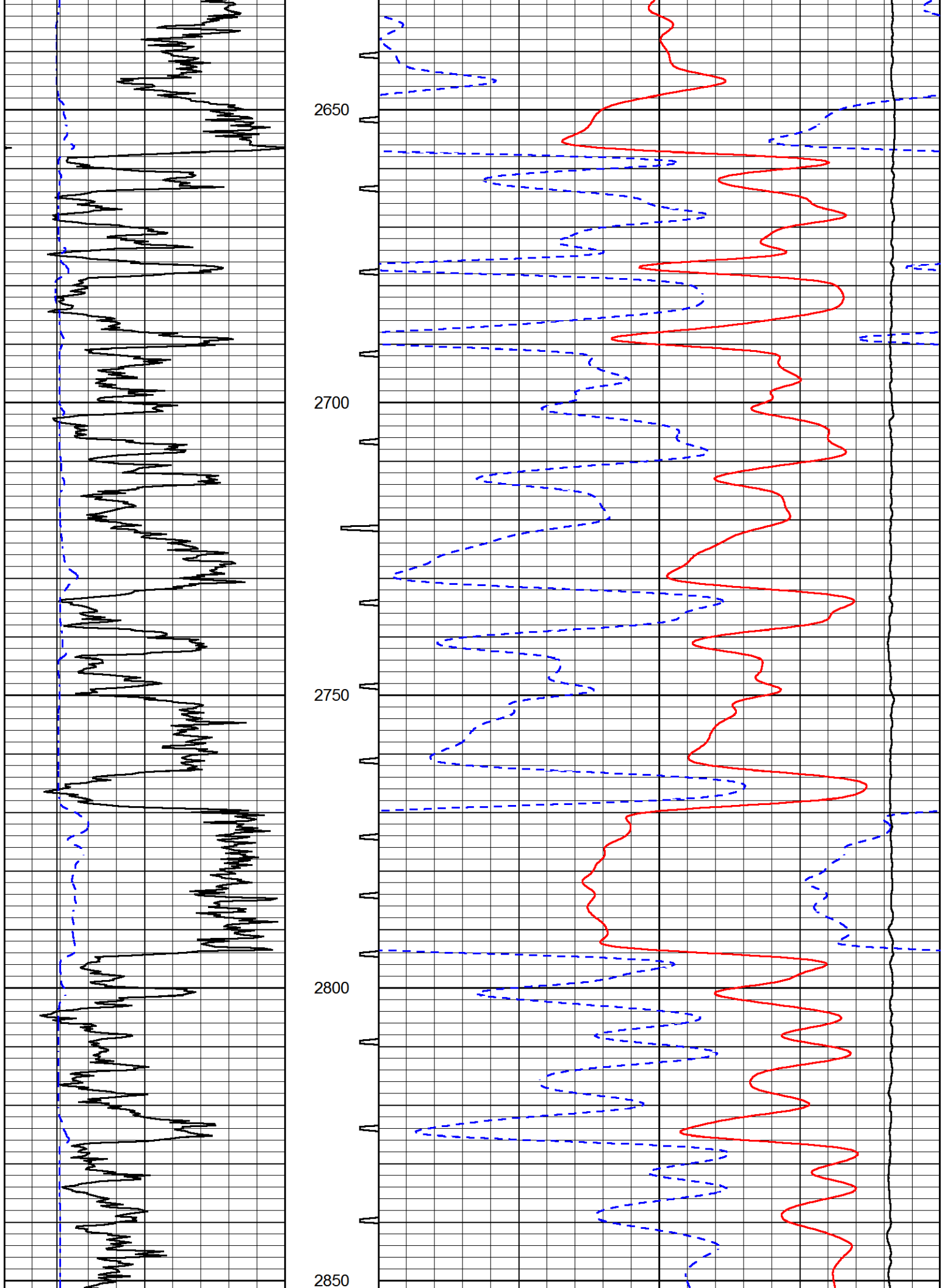


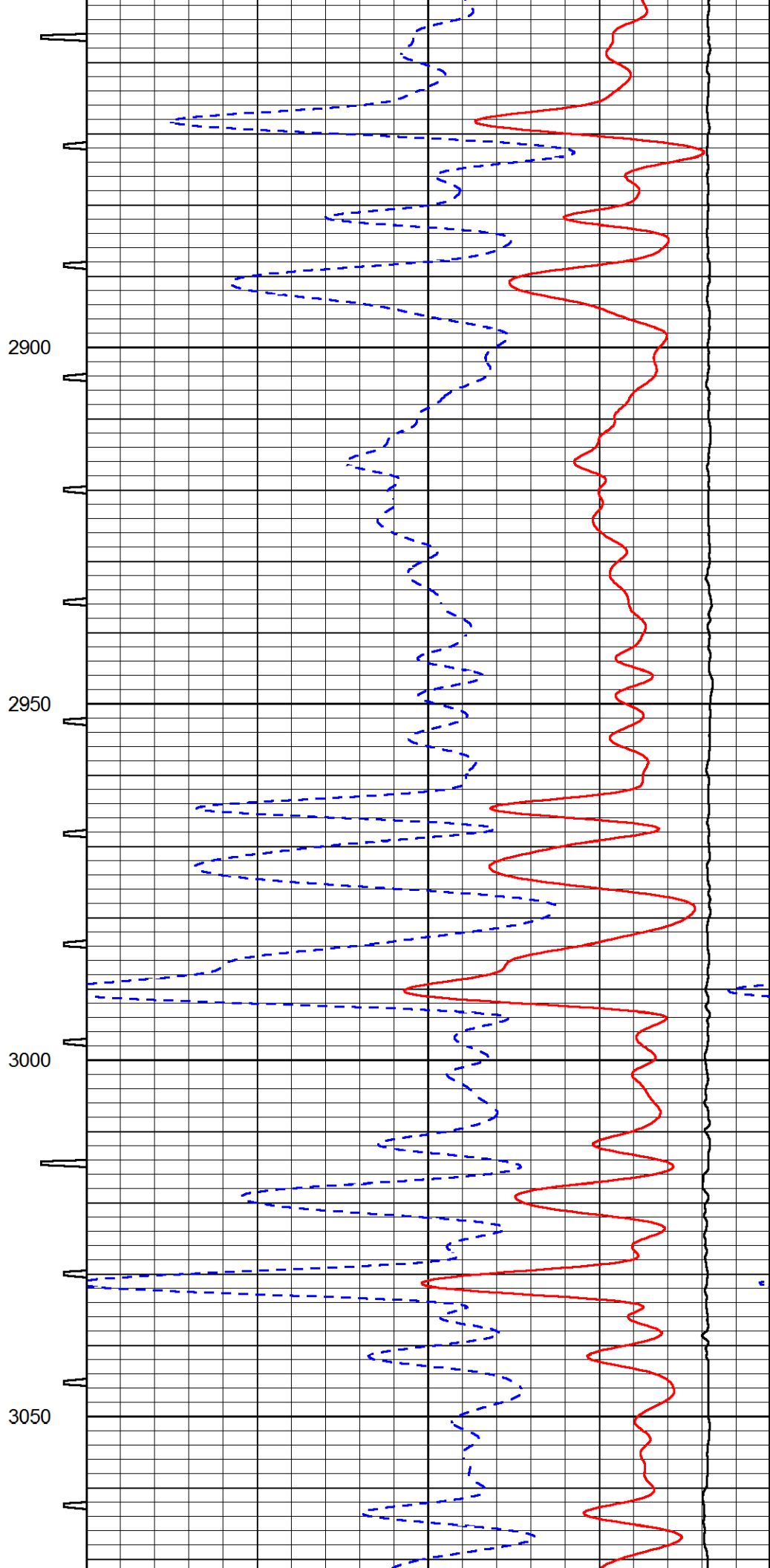
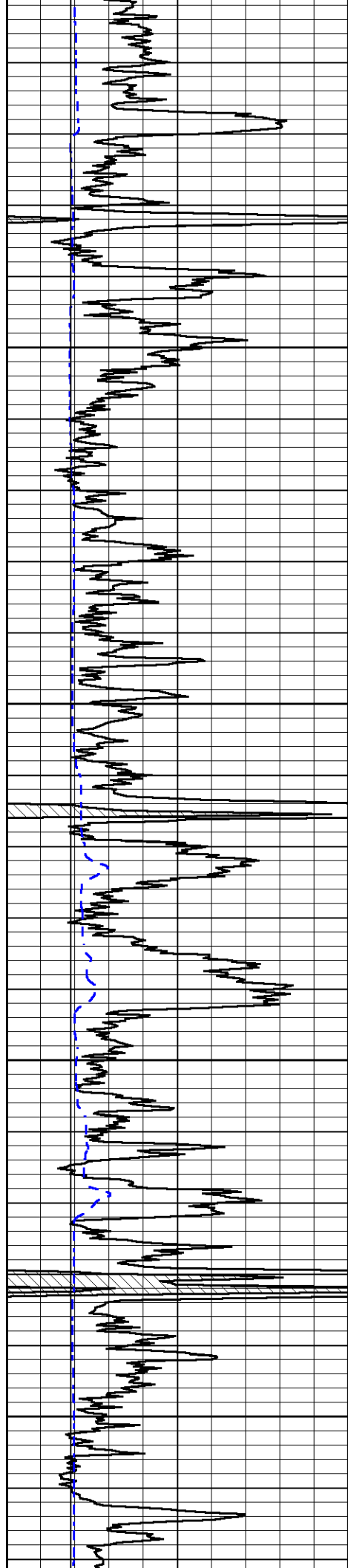


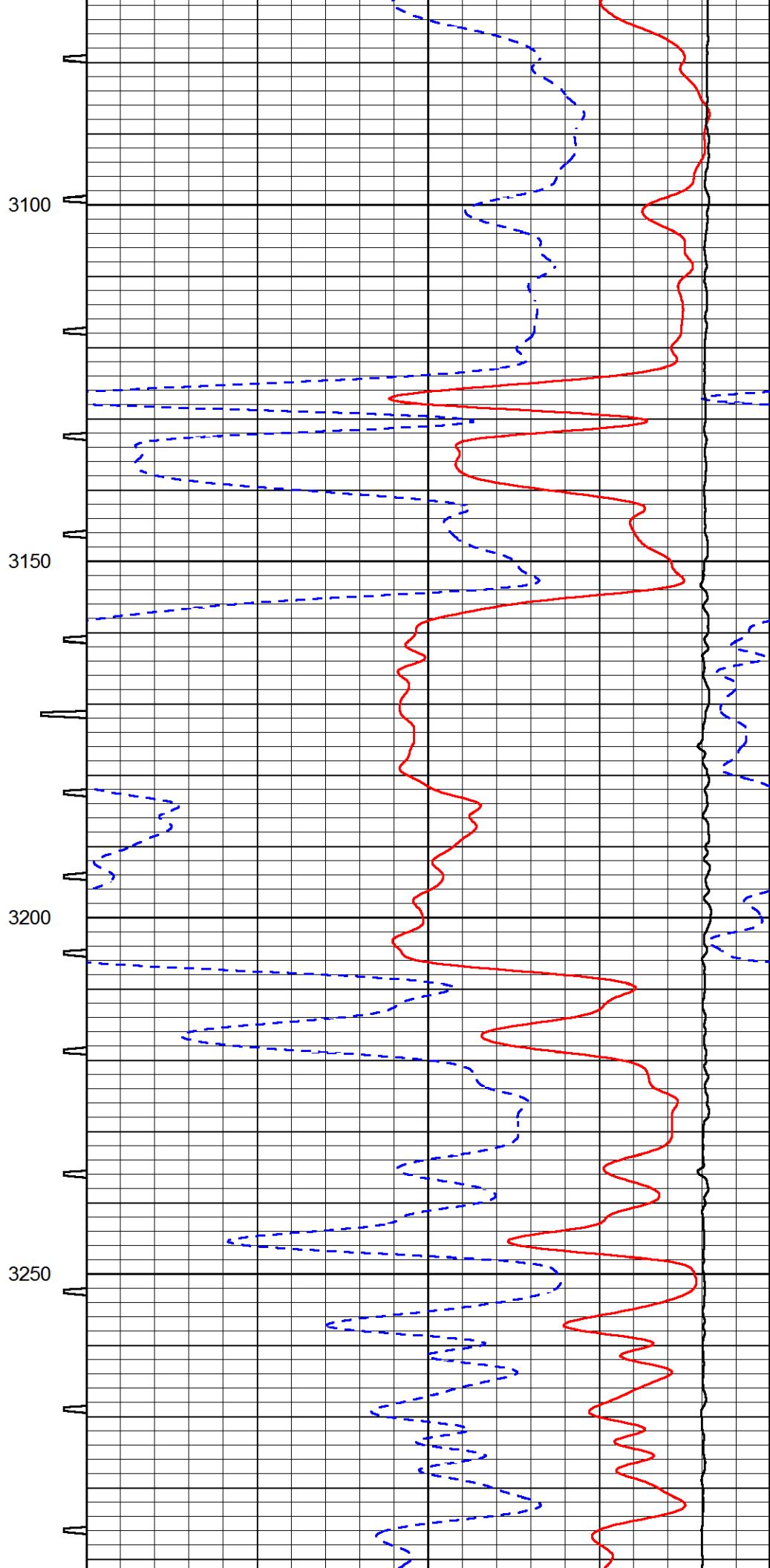
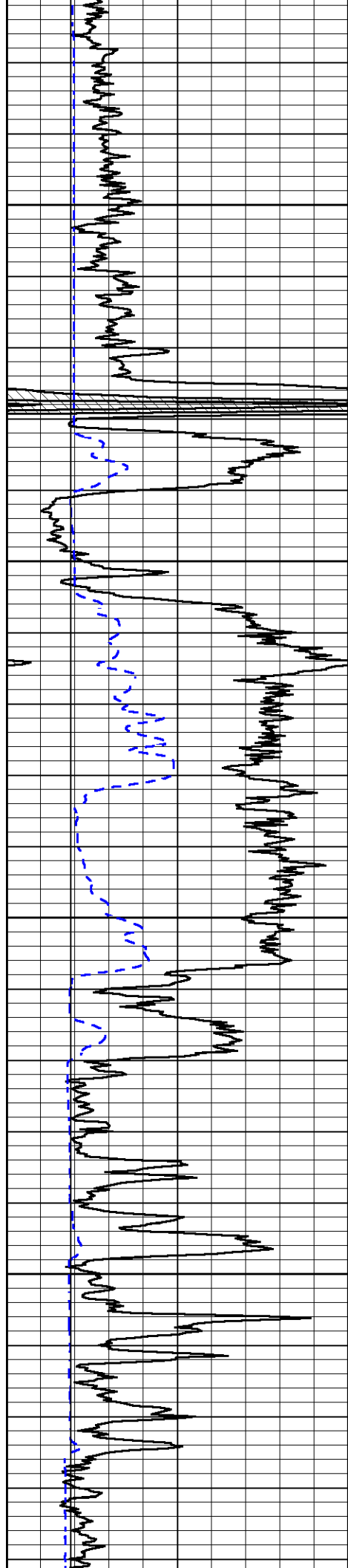


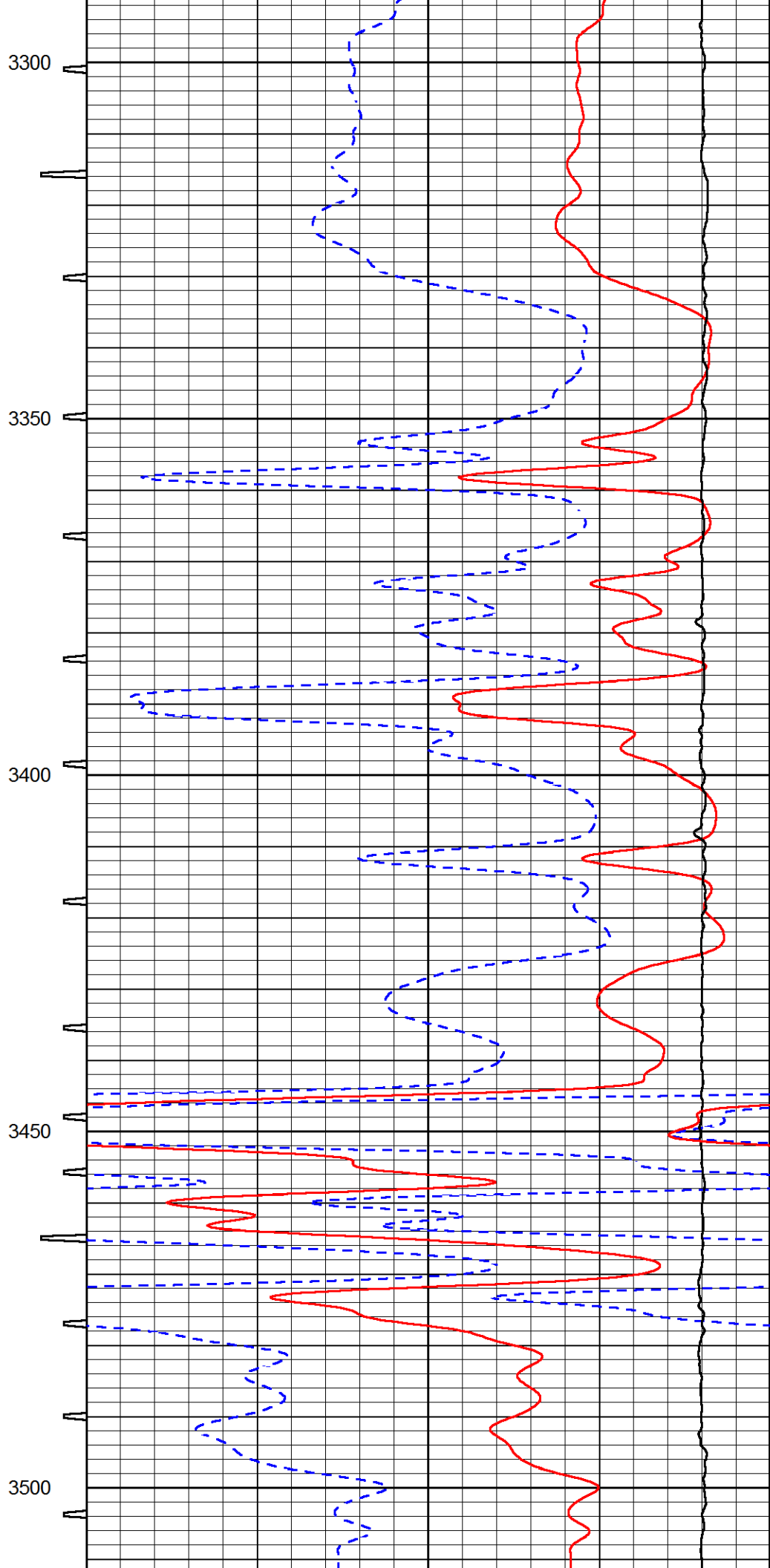
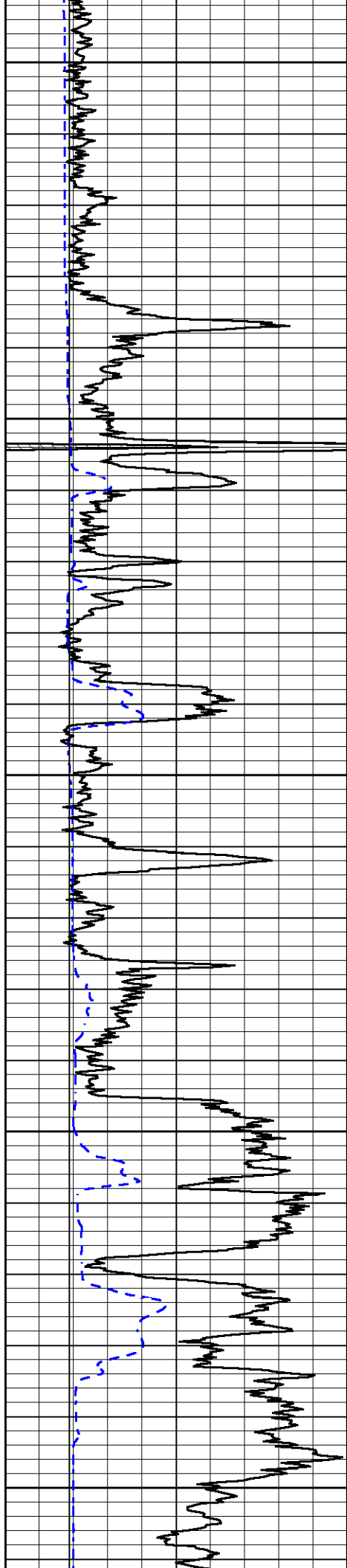


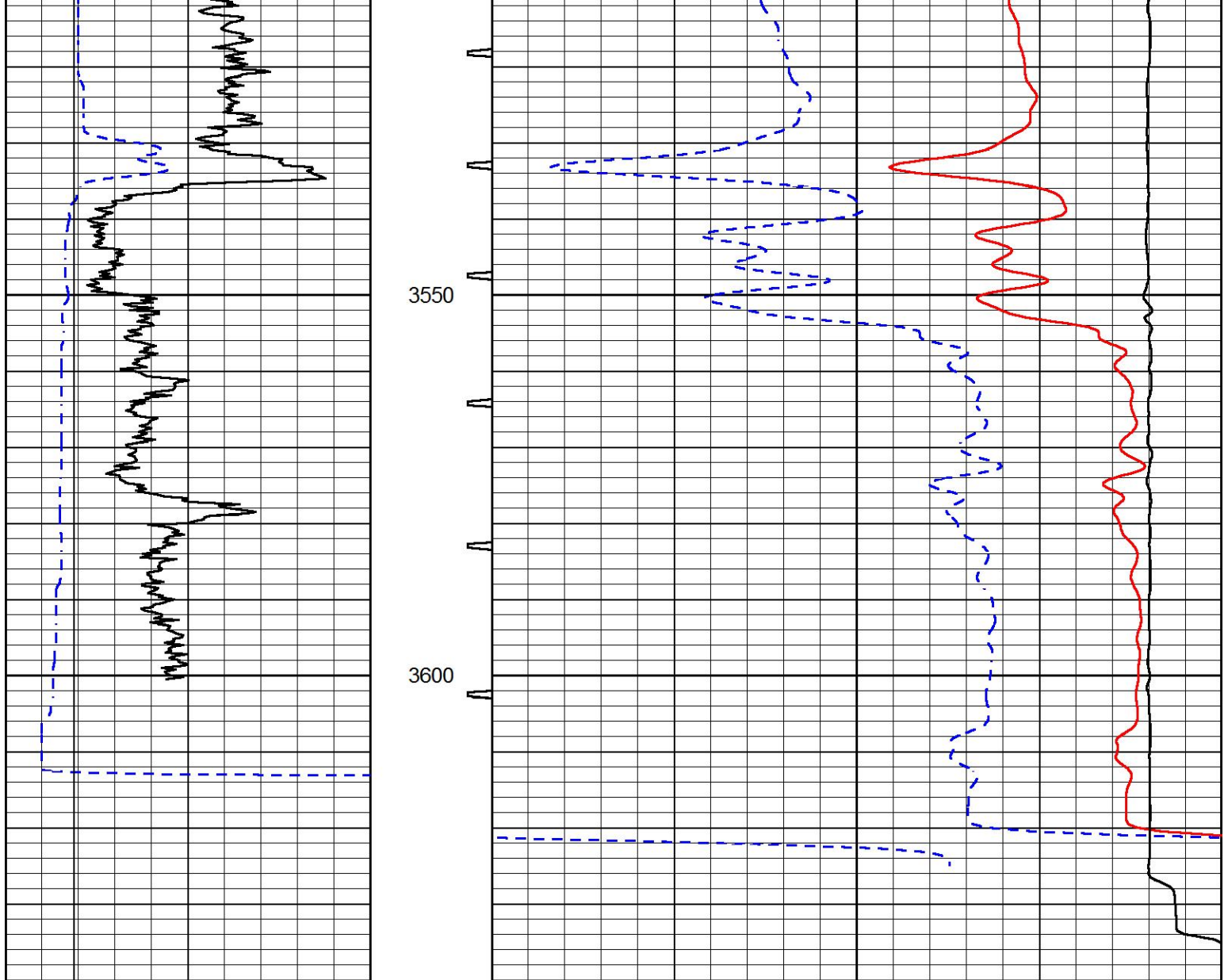












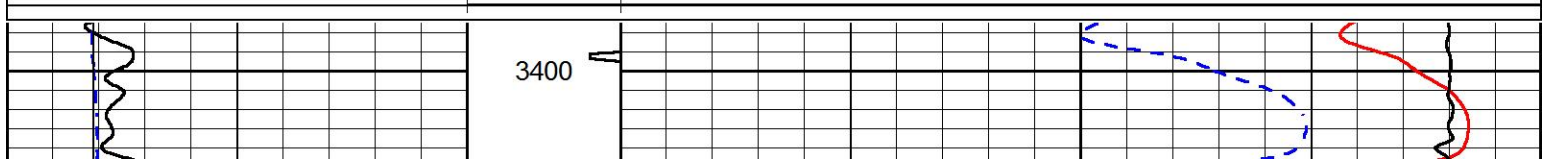
0	GAMMA RAY (GAPI)	150	SONIC INT	140	DELTA TIME (usec/ft) (usec/ft)	40
6	CALIPER (in)	16	TRAVEL TIME	30	SONIC POROSITY (pu)	-10
6	BIT SIZE	16	(msec)	15000	LINE TENSION (lb)	0

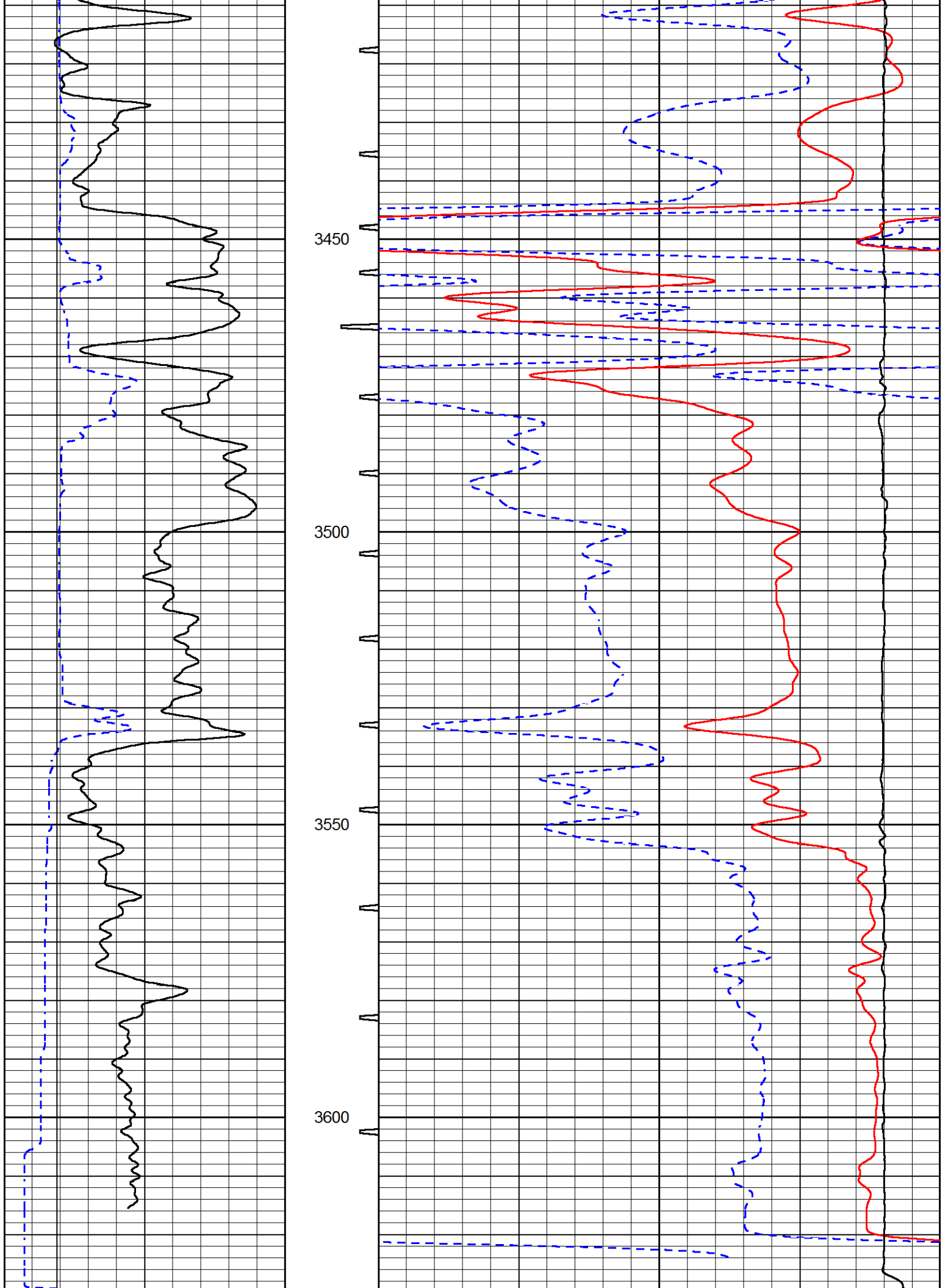


REPEAT SECTION

Database File fg_holl_leroy_farming_trust_2_30.db
 Dataset Pathname stack/pass3.1
 Presentation Format sonic
 Dataset Creation Wed Nov 13 17:36:30 2019
 Charted by Depth in Feet scaled 1:240

0	GAMMA RAY (GAPI)	150	SONIC INT	140	DELTA TIME (usec/ft) (usec/ft)	40
6	CALIPER (in)	16	TRAVEL TIME	30	SONIC POROSITY (pu)	-10
6	BIT SIZE	16	(msec)	15000	LINE TENSION (lb)	0





0	GAMMA RAY (GAPI)	150	SONIC INT	140	DELTA TIME (usec/ft) (usec/ft)	40
6	CALIPER (in)	16	TRAVEL TIME	30	SONIC POROSITY (pu)	-10
6	BIT SIZE	16	(msec)	15000	LINE TENSION (lb)	0

 <p>PIONEER Pioneer Energy Services</p>	Company	F.G. HOLL COMPANY, LLC
	Well	LEROY FARMING TRUST #2-30
	Field	WILDCAT
	County	BARTON
	State	KANSAS