

# GEOLOGICAL REPORT FINAL

## Larry A. Nicholson

NAD 83  
39.39472799  
-100.13017500

COMPANY & WELL **Culbreath Oil & Gas Co. Heskett #1-32**

LOCATION **657' FSL 1322' FEL S2 SE**

SEC **32** TWP **07S** RGE **25W**

COUNTY **Graham** STATE **Ks**

COMPANY Culbreath Oil & Gas Company, Inc.

API # 15-065-24178 FIELD Wildcat

LEASE Heskett WELL # #1-32

LOCATION S2 SE

SURVEY 657' FSL 1322' FEL

SECTION 32 TWP 07S RGE 25W

COUNTY Graham STATE Kansas

CONTRACTOR Duke Drilling Rig # 4

SPUD 12-27-19 5:00 pm COMP

RTD 4049 9:44am 01-04-20 LTD 4049

MUD UP AT 3337

MUD TYPE Chemical Andy's

SAMPLES SAVED FROM 3500 TO RTD

DRILLING TIME FROM 3400 TO RTD

SAMPLES EXAMINED FROM 3500 TO RTD

WELLSITE GEOLOGIST LARRY A. NICHOLSON

ELECTRICAL SURVEYS STEP Dual, Den, Neu, Micro, Sonic, Directional

**ELEVATIONS**

K.B. 2497

D.F.

G.L. 2488

All measurements from K.B. 2497

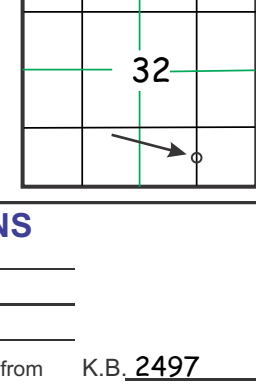
**CASING RECORD**

Conductor of  w/  sx

Surface 266 of 8 5/8 w/ 185 sx

Production of  w/  sx

Drig Supervision



**FORMATION TOPS & STRUCTURAL POSITION**

FORMATION	SAMPLE TOPS	SUBSEA DATUM	ELEC LOG TOPS	SUBSEA DATUM	REFERENCE WELL
					A B
Anhydrite	2151	+346	2151	+346	
B/Anhydrite	2182	+315	2182	+315	
Heebner Sh	3696	-1199	3696	-1199	
Lansing	3731	-1234	3731	-1234	
LANS C	3766	-1269	3766	-1269	
LANS G	3814	-1317	3814	-1317	
Muncie Ck	3848	-1351	3848	-1351	
LANS J	3899	-1402	3899	-1402	
Stark Sh	3908	-1411	3908	-1411	
BKC	3949	-1452	3949	-1452	
RTD	4049	-1552	4049	-1552	
LTD	4049	-1552	4049	-1552	

REFERENCE WELLS

A: \_\_\_\_\_

B: \_\_\_\_\_

LAN 792, Modified 5/05, 11/11, 4/12, 4/18 1inch=25.4mm 8.5x97.5 216 mm x 2460 mm

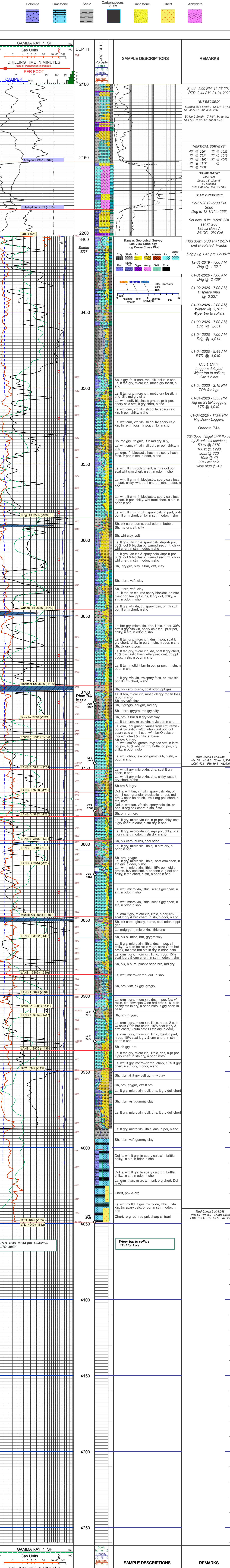
DRILLSTEM TEST SUMMARY :

REMARKS & RECOMMENDATIONS:

No Dsts were run.

Based on lack of shows and reservoir the well was P&A.

### LEGEND



RTD 4049 09:44 pm 1/04/2020 LTD 4049

Wiper Trip to collars TOH for Log

COMPANY Culbreath Oil & Gas Company, Inc.

LEASE Heskett #1-32 S2 SE

LOCATION 657' FSL 1322' FEL SEC. 32 TWP 07S RGE 25W

COUNTY Graham STATE Ks

**ELEVATIONS**

K.B. 2497

D.F.

G.L. 2488

All measurements from K.B. 2497

