



DUAL COMP POROSITY LOG

Company: FUNK PETROLEUM, LLC
 Well: 3KO #1-5
 Field: WILDCAT
 County: THOMAS
 State: KANSAS

Company: FUNK PETROLEUM, LLC
 Well: 3KO #1-5
 Field: WILDCAT
 County: THOMAS
 State: KANSAS

Location: 1783' FNL & 335' FEL
 SEC 5 TWP 7S RGE 34W
 Permanent Datum: GROUND LEVEL Elevation 3203'
 Log Measured From: KELLY BUSHING
 Drilling Measured From: KELLY BUSHING
 Other Services: DIL MEL/BHCS
 Elevation: K.B. 3208', D.F. N/A, G.L. 3203'

Date	1/8/2020						
Run Number	ONE						
Type Log	CNL/CDL						
Depth Driller	4780'						
Depth Logger	4782'						
Bottom Logged Interval	4750'						
Top Logged Interval	3700'						
Type Fluid In Hole	CHEMICAL						
Salinity, PPM CL	6200						
Density	9.5						
Level	FULL						
Max. Rec. Temp. F	124 DEGF						
Operating Rig Time	4 HOURS						
Equipment -- Location	P-108 HAYS						
Recorded By	J. HENRICKSON						
Witnessed By	TOM FUNK						
Borehole Record							
Run No.	Bit	From	To	Size	Wgt.	From	To
ONE	12.25"	0	348'	8.625"	23#	0	348'
TWO	7.875"	348'	TD				
Casing Record							

<<< Fold Here >>>

All interpretations are opinions based on inferences from electrical or other measurements and Pioneer Wireline Services, LLC cannot and does not guarantee the accuracy or correctness of any interpretation, and Pioneer Wireline Services, LLC will not be liable or responsible for any loss, costs, damages, or expenses incurred or sustained by anyone resulting from any interpretation made by any of our officers, agents or employees.

Comments

N/A DENOTES NOT AVAILABLE OR NON-APPLICABLE.
 COLBY KANSAS
 WEST ON HWY 24 TO 15 ROAD, 5 3/4 NORTH, WEST INTO

Log Measured From: KELLY BUSHING 5 Ft. Above Permanent Datum

THANK YOU FOR USING PIONEER ENERGY SERVICES
www.pioneerenergy.com 785-625-3858

Your Pioneer Energy Services Crew		This Log Record Was Witnessed By	
Engineer: J. HENRICKSON	Operator: K. PFANNENSTIEL	Operator:	Operator:
		Primary Witness: TOM FUNK	Secondary Witness:
		Secondary Witness:	Secondary Witness:
		Secondary Witness:	Secondary Witness:

Sensor	Offset (ft)	Schematic	Description	Length (ft)	O.D. (in)	Weight (lb)
GR	44.50		GR-M&W (89-M&W)	3.00	3.50	50.00
CNLSC CNSSC	41.40 40.65		CNT-M&W (tk10-MW)	5.50	3.50	100.00
LSD DCAL SSD	32.35 32.33 31.85		CDL-M&W (934-229)	8.50	4.00	250.00
MCAL MI MN	20.87 20.87 20.87		ML-PSI UDM ML (UDM-01) Stackable Microlog Tools	11.50	4.00	215.00
RLL3 RLL3F	15.80 15.79		DIL-M&W (55-222)	18.50	3.50	220.00
CILD	8.00					
CILM	4.70					
SP	0.20					

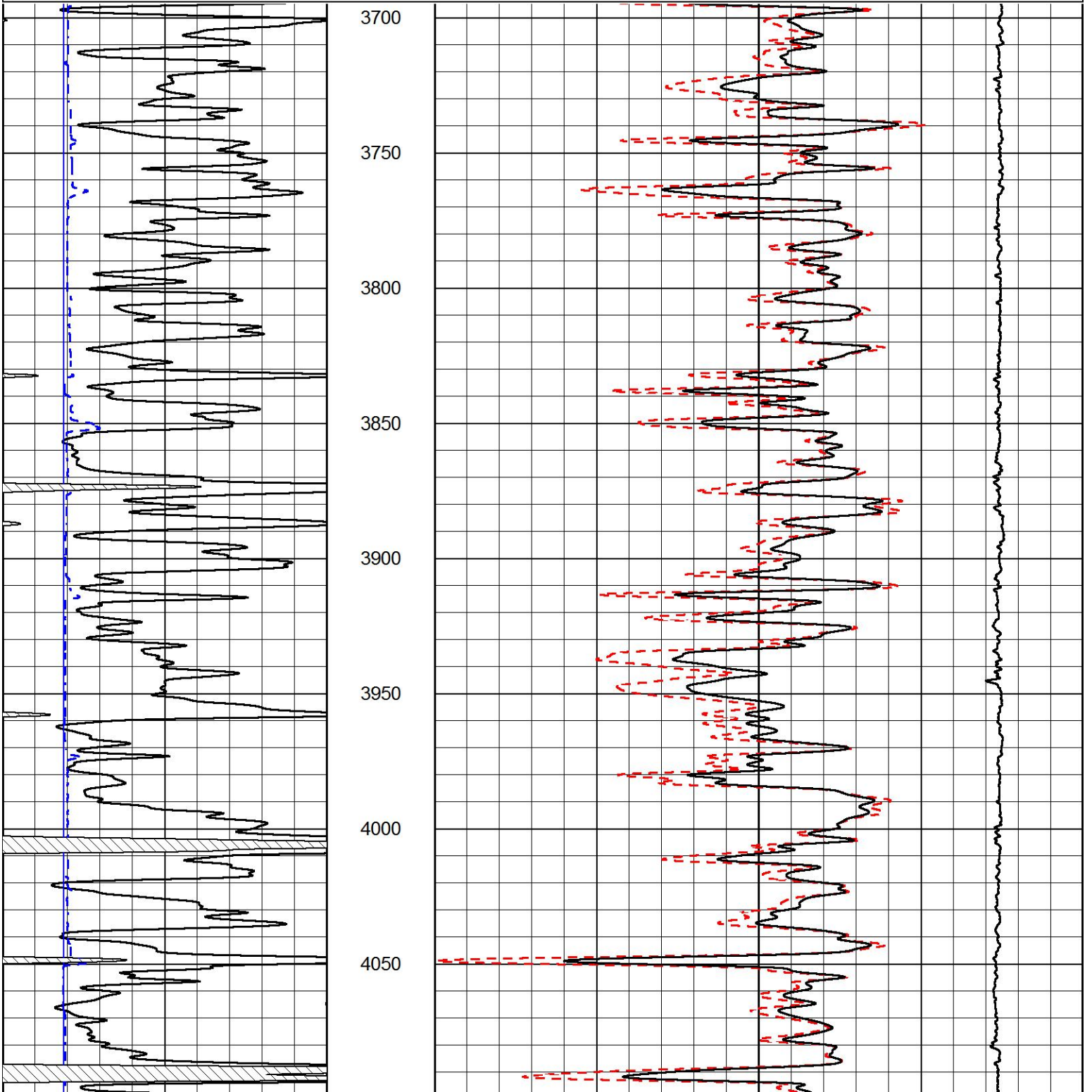
Dataset: funk_3ko_1_5.db: field/well/stackml/pass3.1
 Total length: 47.00 ft
 Total weight: 835.00 lb
 O.D.: 4.00 in

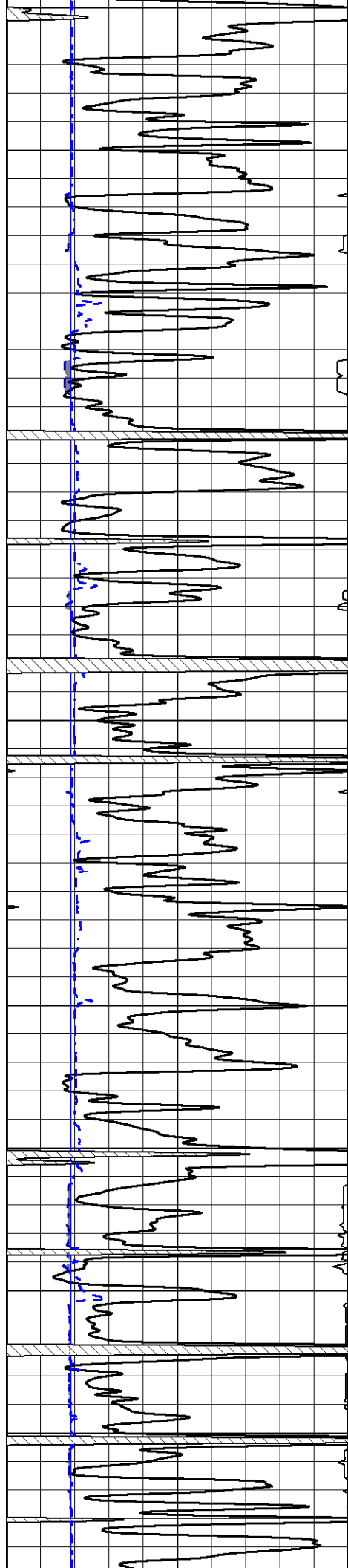
MAIN PASS

Database File funk_3ko_1_5.db
 Dataset Pathname stackml/pass3.1
 Presentation Format cdl
 Dataset Creation Wed Jan 08 15:52:45 2020
 Charted by Depth in Feet scaled 1:600

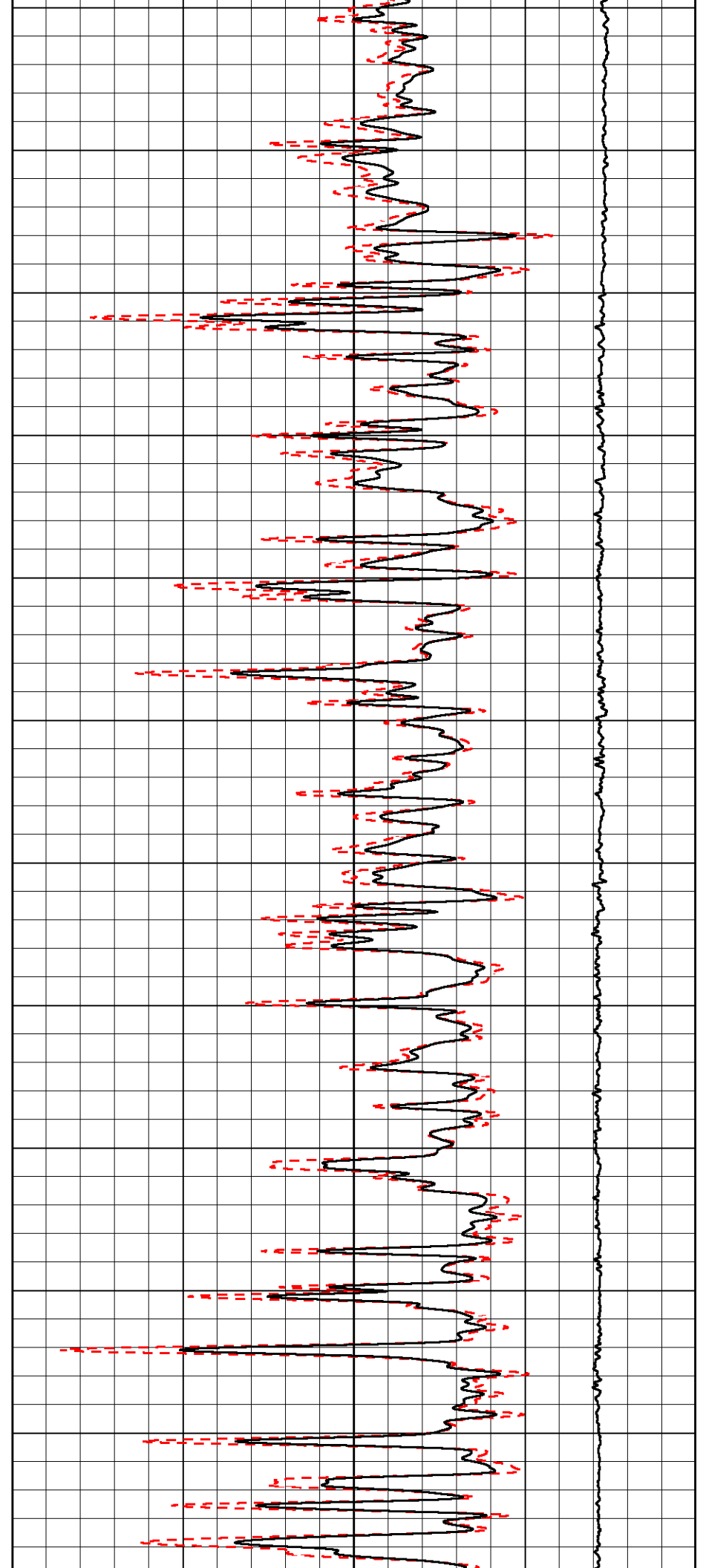
0	GAMMA RAY (GAPI)	150
6	CALIPER (in)	16

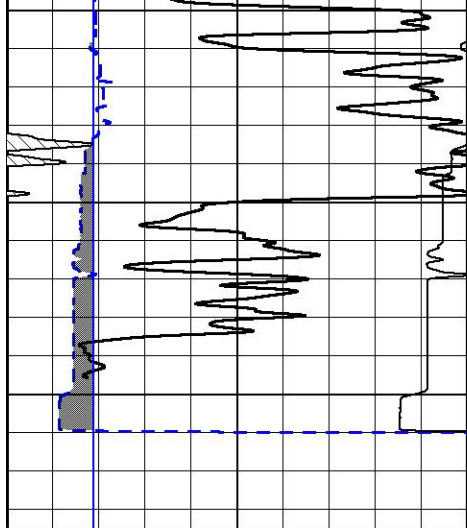
30	COMPENSATED DENSITY (pu)	-10
2	BULK DENSITY (g/cc)	3
15000	LINE TENSION (lb)	0



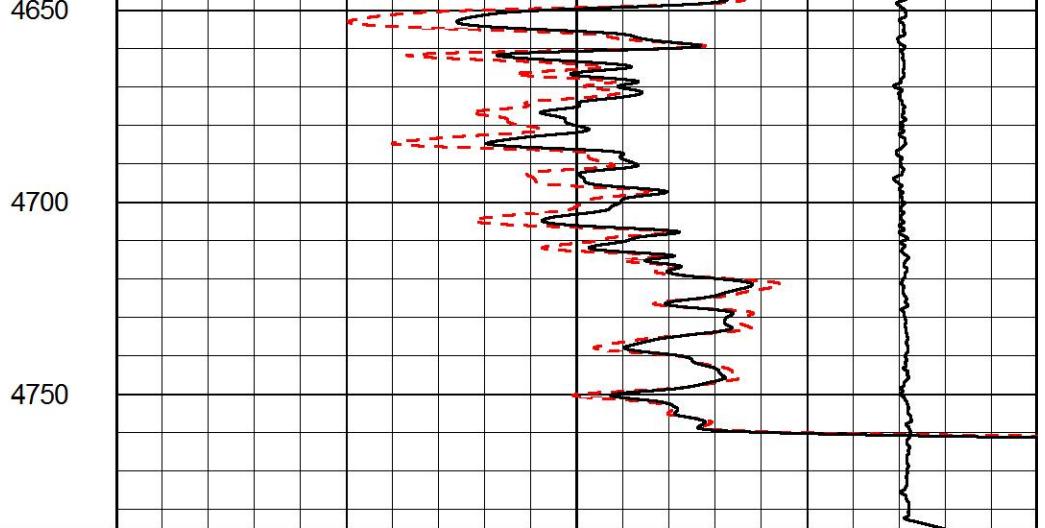


4100
4150
4200
4250
4300
4350
4400
4450
4500
4550
4600





0	GAMMA RAY (GAPI)	150
6	CALIPER (in)	16



30	COMPENSATED DENSITY (pu)	-10
2	BULK DENSITY (g/cc)	3
15000	LINE TENSION (lb)	0

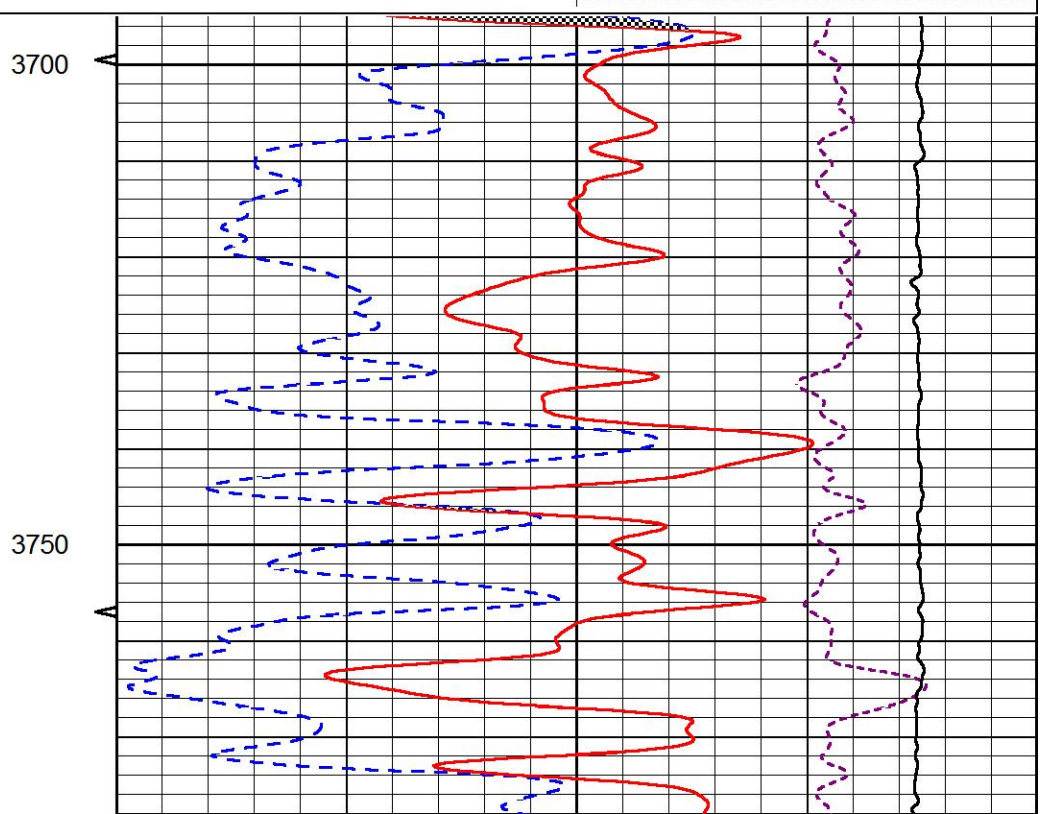
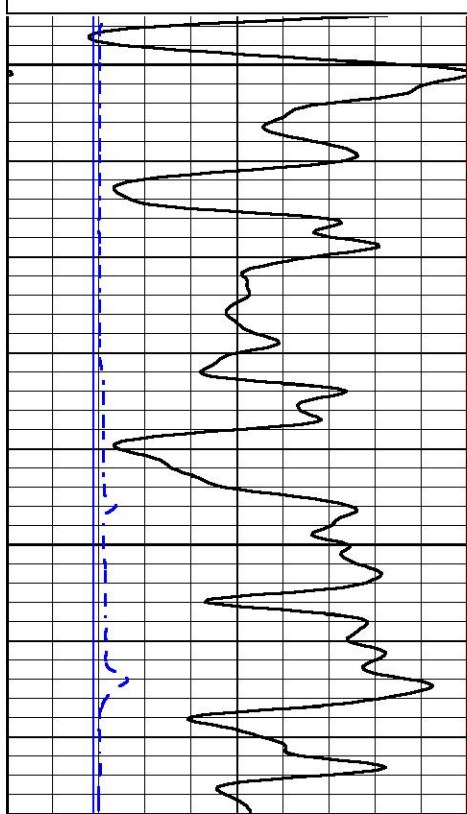


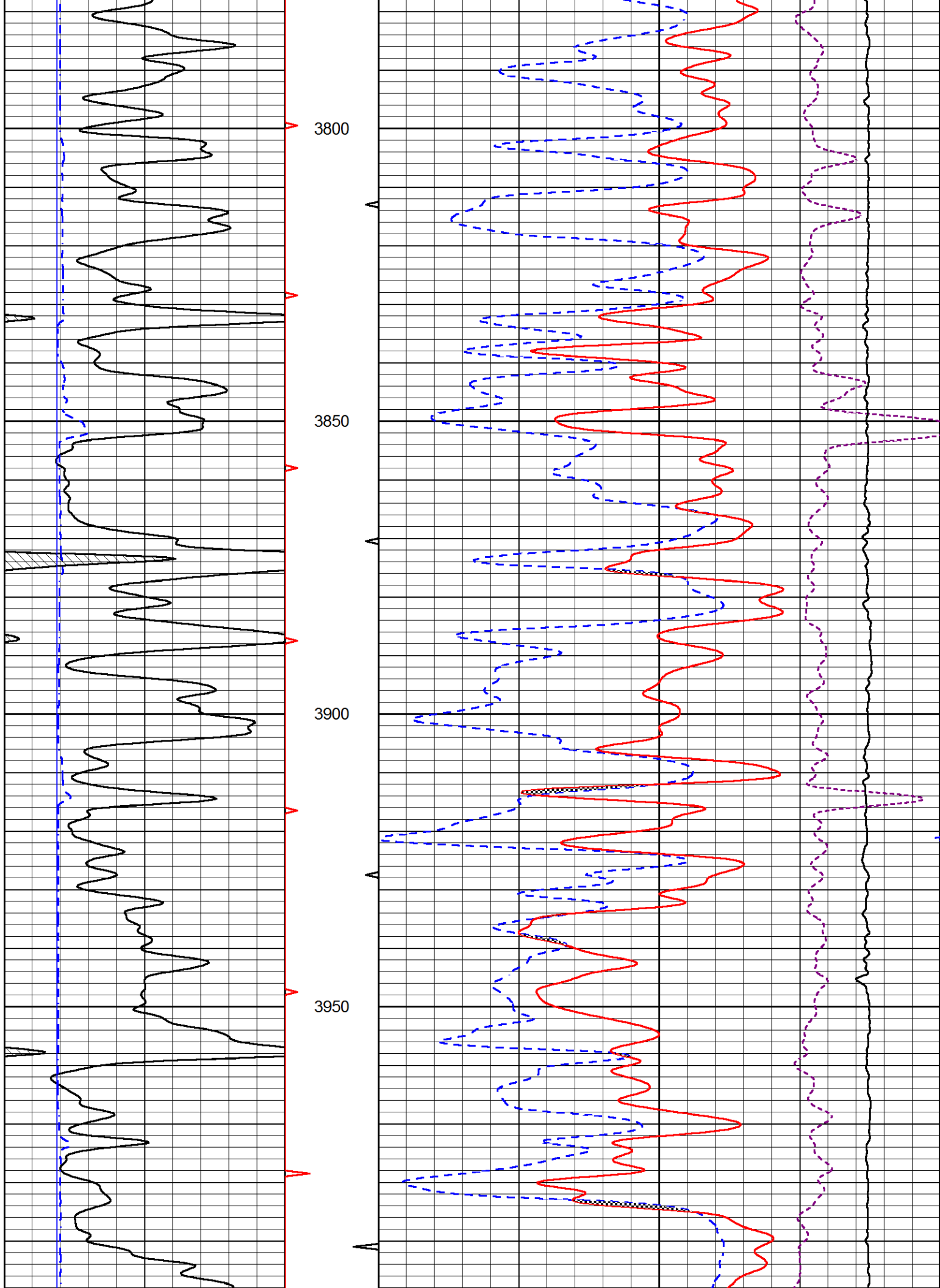
MAIN PASS

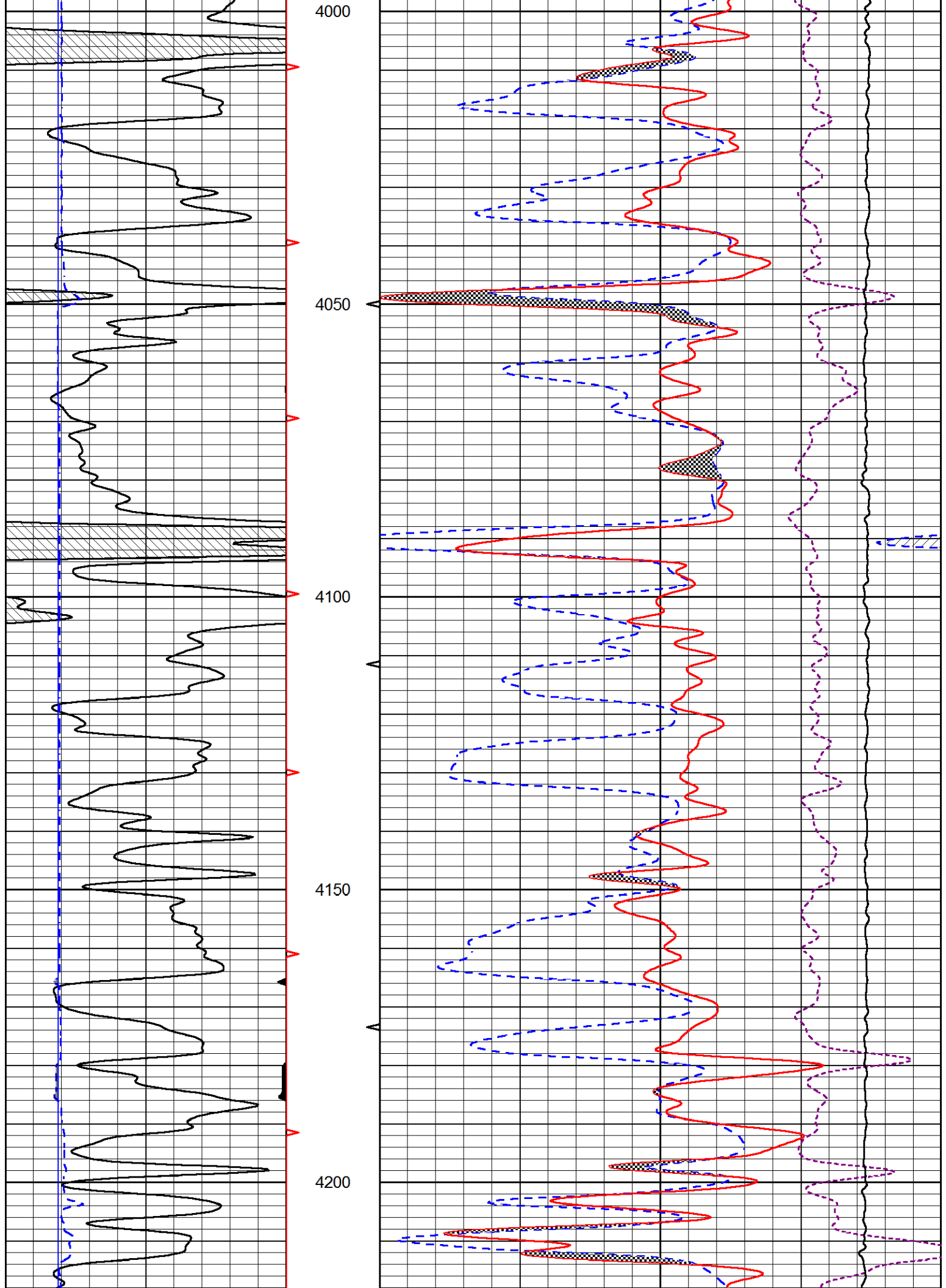
Database File funk_3ko_1_5.db
 Dataset Pathname stackml/pass3.1
 Presentation Format cndlspec
 Dataset Creation Wed Jan 08 15:52:45 2020
 Charted by Depth in Feet scaled 1:240

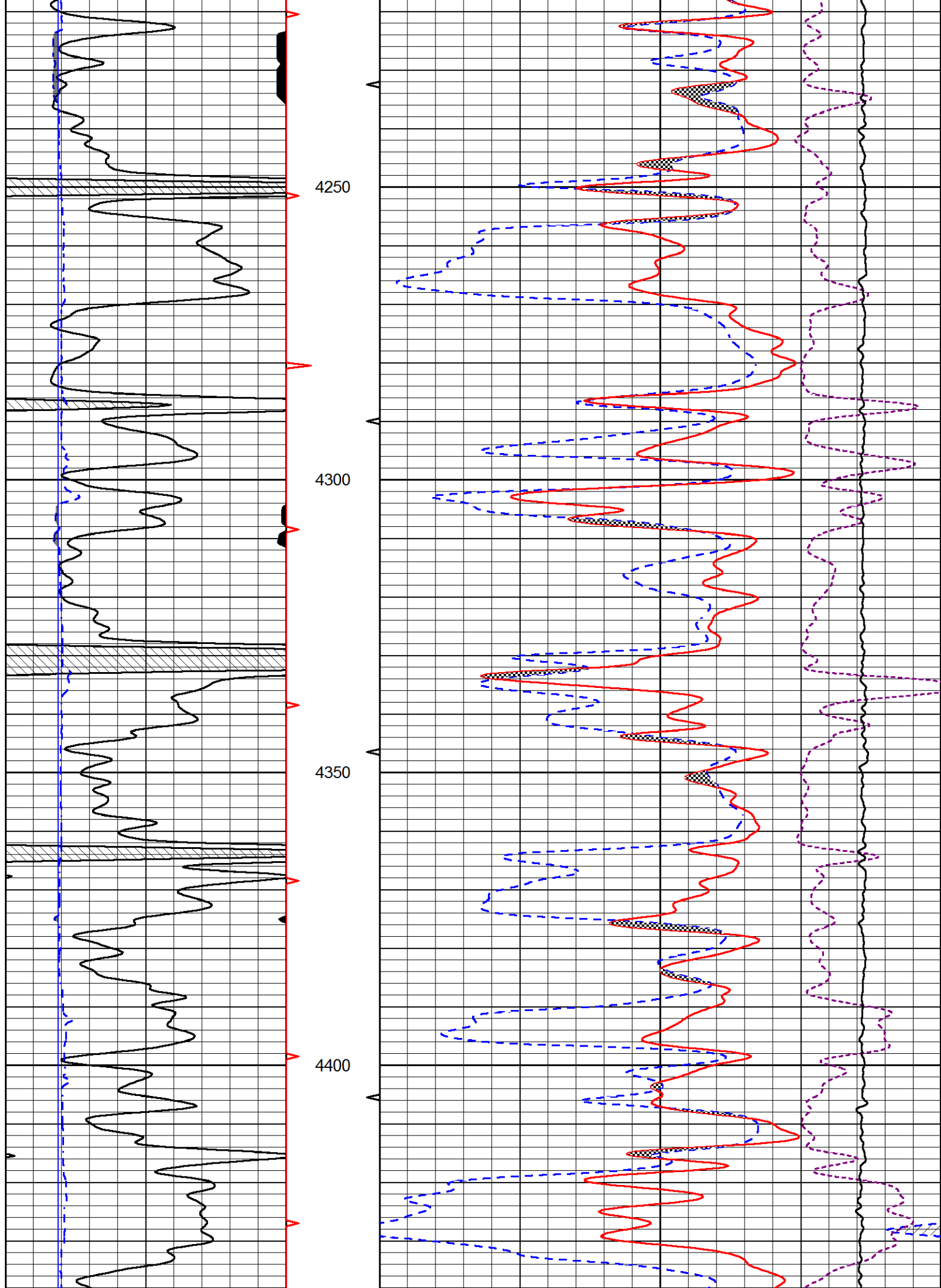
0	GAMMA RAY (GAPI)	150
6	dcal (in)	16
6	BIT SIZE (in)	16

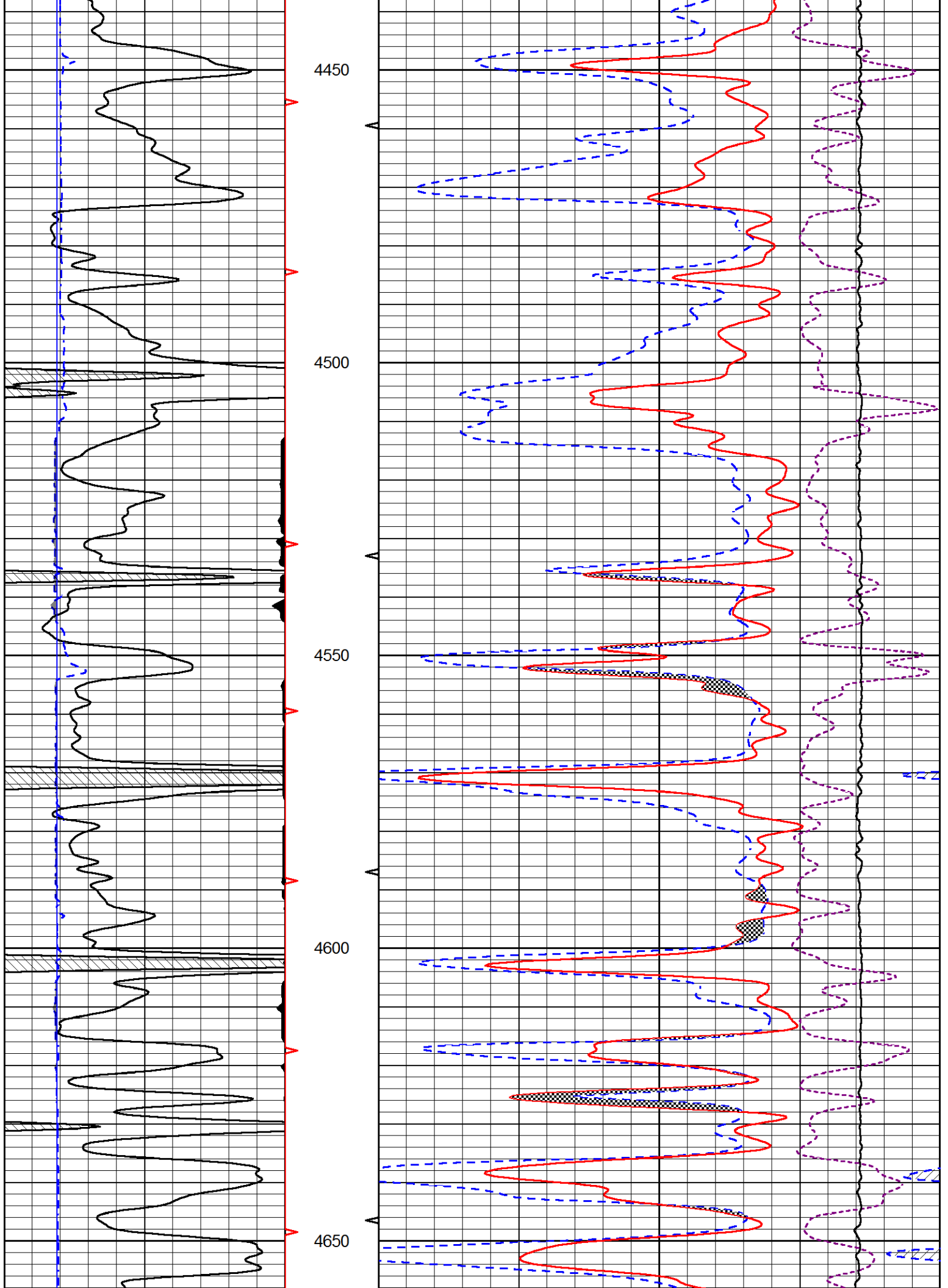
30	CNPOR (pu)	-10
30	DPOR (pu)	-10
15000	LINE TENSION (lb)	0
-0.25	RHOC (g/cc)	0.25

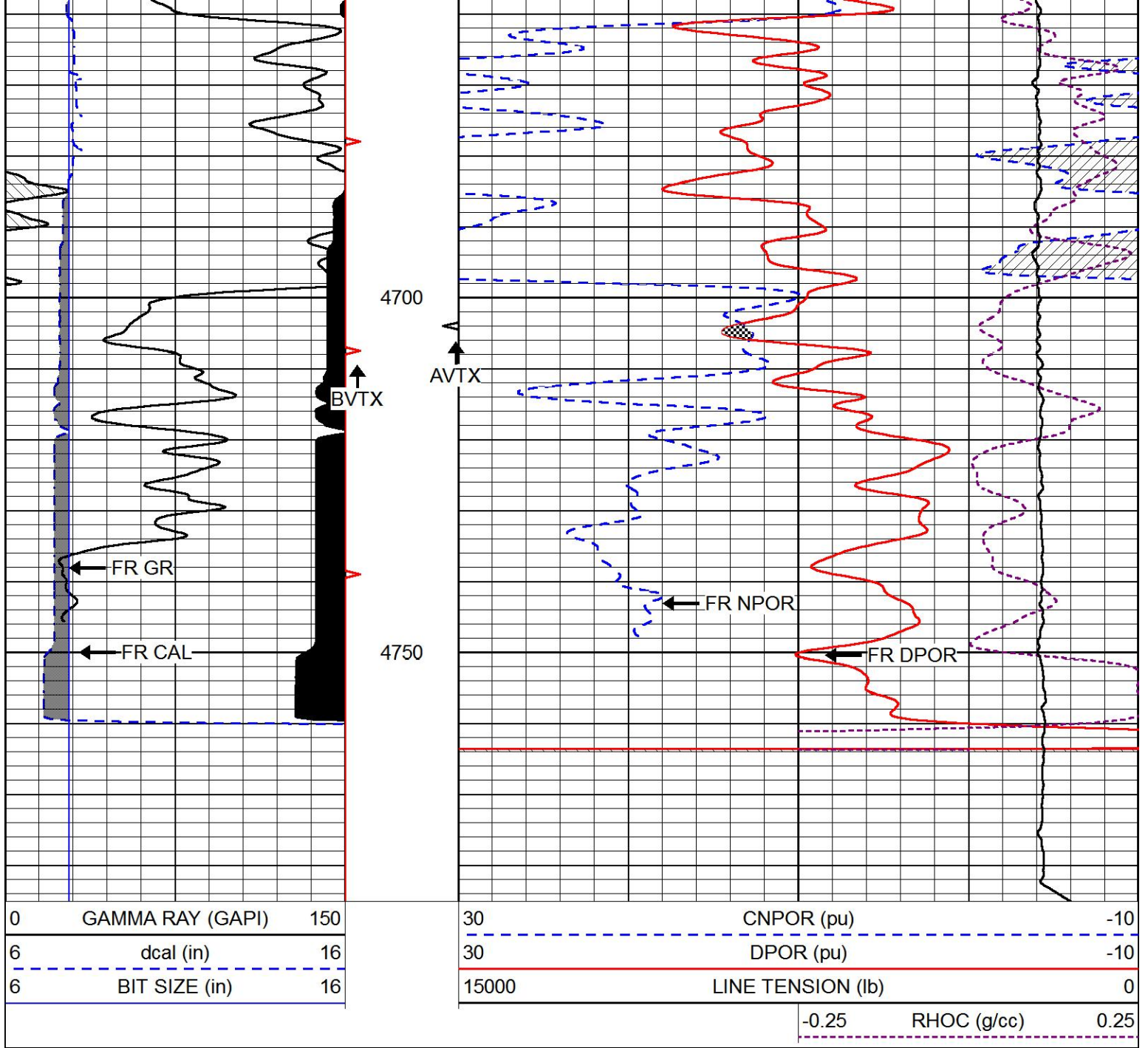






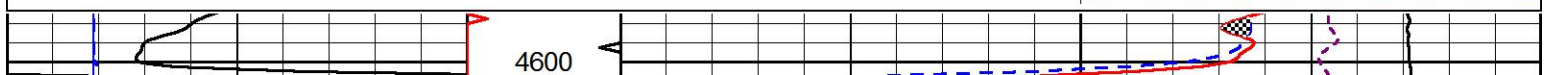
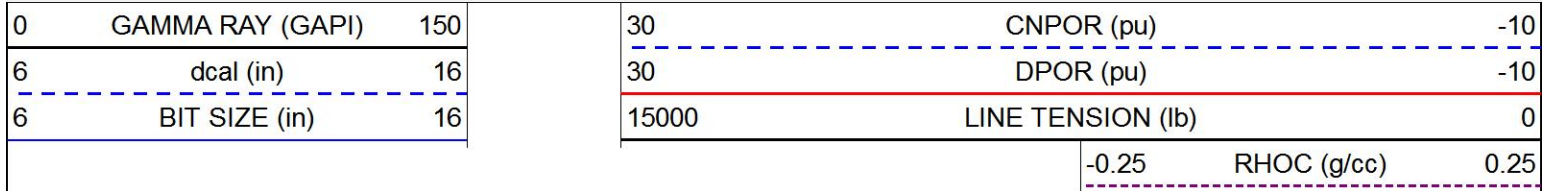


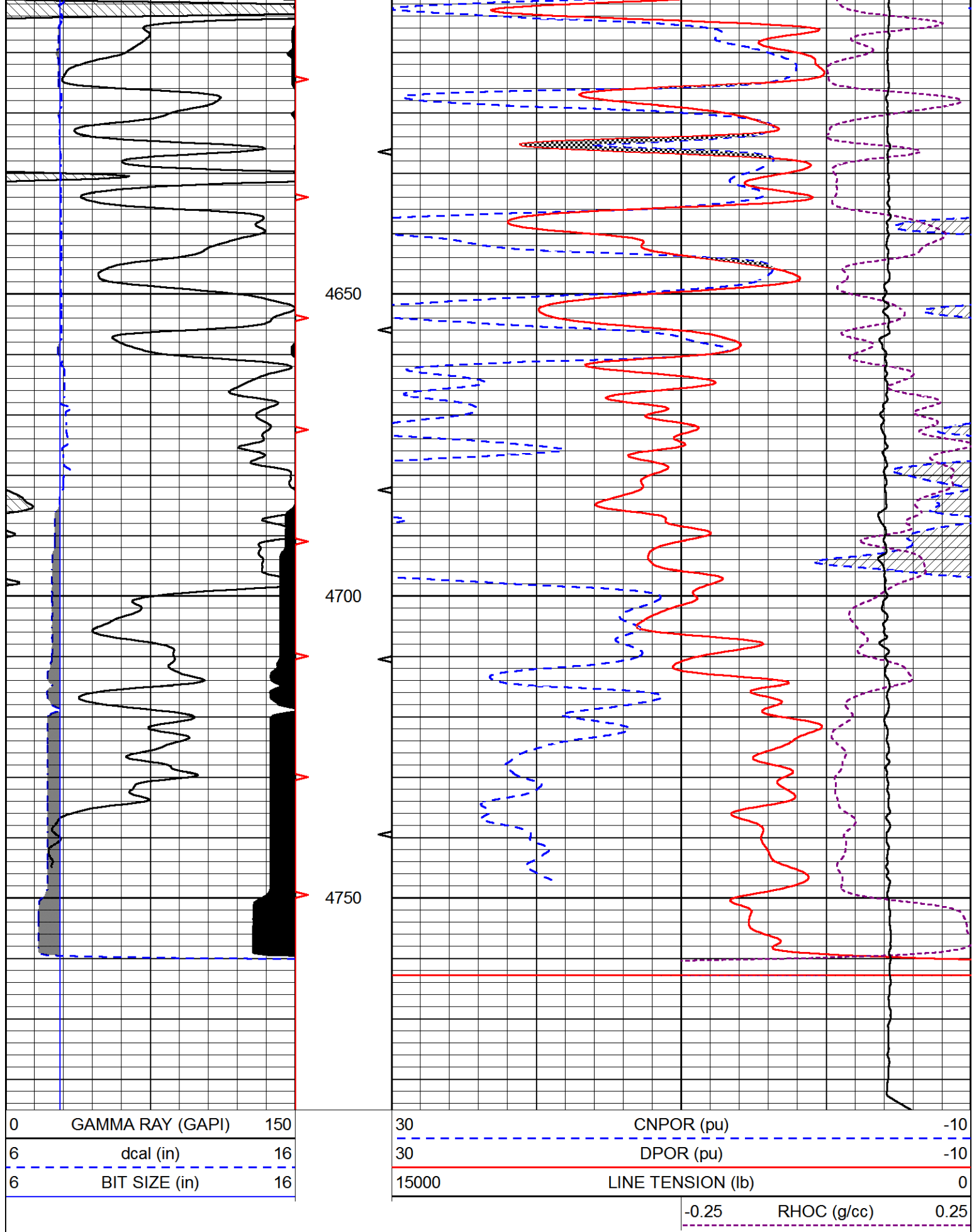




REPEAT SECTION

Database File funk_3ko_1_5.db
 Dataset Pathname stackml/pass2.1
 Presentation Format cndlspec
 Dataset Creation Wed Jan 08 15:28:43 2020
 Charted by Depth in Feet scaled 1:240





Calibration Report

Database File funk_3ko_1_5.db
 Dataset Pathname stackml/pass3.1

Dual Induction Calibration Report

Serial-Model: 55-222-M&W
 Calibration Performed: Tue Dec 10 05:11:10 2019

Loop:	Readings		References			Results	
	Air	Loop	Air	Loop		Gain	Offset
Deep	167.000	835.000	0.000	255.800	mmho/m	0.500	-41.000
Medium	0.000	1348.000	142.000	255.800	mmho/m	0.370	-15.000

Microlog Calibration Report

Serial-Model: UDM-01-PSI UDM ML
 Performed: Fri May 31 06:10:42 2019

	Readings		References			Results	
	Zero	Cal	Zero	Cal		m	b
Normal	0.0000	1.0000	0.0000	1.0000	Ohm-m	18000.0000	0.0000
Inverse	0.0000	1.0000	0.0000	1.0000	Ohm-m	25000.0000	0.0000
Caliper	1.0019	1.2642	8.0000	22.0000	in	53.3774	-47.4785

Compensated Density Calibration Report

Serial-Model: 934-229-M&W
 Source / Verifier: 21170B /
 Master Calibration Performed: Thu Dec 19 15:46:53 2019

Master Calibration

	Density		Far Detector	Near Detector	
Magnesium	1.755	g/cc	3391.68	2392.26	cps
Aluminum	2.670	g/cc	645.86	1568.99	cps
Spine Angle = 75.73			Density/Spine Ratio = 0.535		
	Size		Reading		
Small Ring	4.00	in	1.39		
Large Ring	14.00	in	1.04		

Compensated Neutron Calibration Report

Serial Number: tk10-MW
 Tool Model: M&W
 Calibration Performed: Wed Nov 16 11:21:36 2016

Detector	Readings	Target	Normalization
Short Space	6240.00 cps	1000.00 cps	1.6025
Long Space	460.00 cps	1000.00 cps	1.9500

Gamma Ray Calibration Report

Serial Number: 89-M&W

Tool Model:	M&W	
Calibration Performed:	Tue Dec 10 05:11:34 2019	
Calibrator Value:	1000.0	GAPI
Background Reading:	0.0	cps
Calibrator Reading:	6.2	cps
Sensitivity:	0.5200	GAPI/cps



PIONEER
Pioneer Energy Services

Company	FUNK PETROLEUM, LLC
Well	3KO #1-5
Field	WILDCAT
County	THOMAS
State	KANSAS