



# MICRORESISTIVITY LOG

**Company:** FUNK PETROLEUM, LLC  
**Well:** 3KO #1-5  
**Field:** WILDCAT  
**County:** THOMAS  
**State:** KANSAS

**Location:** API #: 15-193-21069-00-00  
 1783' FNL & 335' FEL  
 SEC 5 TWP 7S RGE 34W  
**Other Services:** CNL/CDL DIL/BHCS

Date	1/8/2020
Run Number	ONE
Depth Driller	4780'
Depth Logger	4782'
Bottom Logged Interval	4781'
Top Log Interval	3700'
Casing Driller	8.625" @ 348'
Casing Logger	347'
Bit Size	7.875"
Type Fluid in Hole	CHEMICAL
Salinity, ppm CL	6200
Density / Viscosity	9.5 69
pH / Fluid Loss	11.0 8.0
Source of Sample	FLOWLINE
Rm @ Meas. Temp	.45 @ 74
Rmt @ Meas. Temp	.34 @ 74
Rmc @ Meas. Temp	.61 @ 74
Source of Rmf / Rmc	CHARTS
Rm @ BHT	.27 @ 124
Operating Rig Time	4 HOURS
Max Rec. Temp. F	124 DEGF
Equipment Number	P-108
Location	HAYS
Recorded By	J. HENRICKSON
Witnessed By	TOM FUNK

<<< Fold Here >>>

All interpretations are opinions based on inferences from electrical or other measurements and Pioneer Wireline Services, LLC cannot and does not guarantee the accuracy or correctness of any interpretation, and Pioneer Wireline Services, LLC will not be liable or responsible for any loss, costs, damages, or expenses incurred or sustained by anyone resulting from any interpretation made by any of our officers, agents or employees.

**Comments**

N/A DENOTES NOT AVAILABLE OR NON-APPLICABLE.  
 COLBY KANSAS  
 WEST ON HWY 24 TO 15 ROAD, 5 3/4 NORTH, WEST INTO

Log Measured From: KELLY BUSHING 5 Ft. Above Permanent Datum

THANK YOU FOR USING PIONEER ENERGY SERVICES  
[www.pioneerenergy.com](http://www.pioneerenergy.com) 785-625-3858

<b>Your Pioneer Energy Services Crew</b> Engineer: J. HENRICKSON Operator: K. PFANNENSTIEL Operator: Operator:	<b>This Log Record Was Witnessed By</b> Primary Witness: TOM FUNK Secondary Witness: Secondary Witness: Secondary Witness:
--	--

Sensor	Offset (ft)	Schematic	Description	Length (ft)	O.D. (in)	Weight (lb)
GR	44.50		GR-M&W (89-M&W)	3.00	3.50	50.00
CNLSC CNSSC	41.40 40.65		CNT-M&W (tk10-MW)	5.50	3.50	100.00
LSD DCAL SSD	32.35 32.33 31.85		CDL-M&W (934-229)	8.50	4.00	250.00
MCAL MI MN	20.87 20.87 20.87		ML-PSI UDM ML (UDM-01) Stackable Microlog Tools	11.50	4.00	215.00
RLL3 RLL3F	15.80 15.79		DIL-M&W (55-222)	18.50	3.50	220.00
CILD	8.00					
CILM	4.70					
SP	0.20					

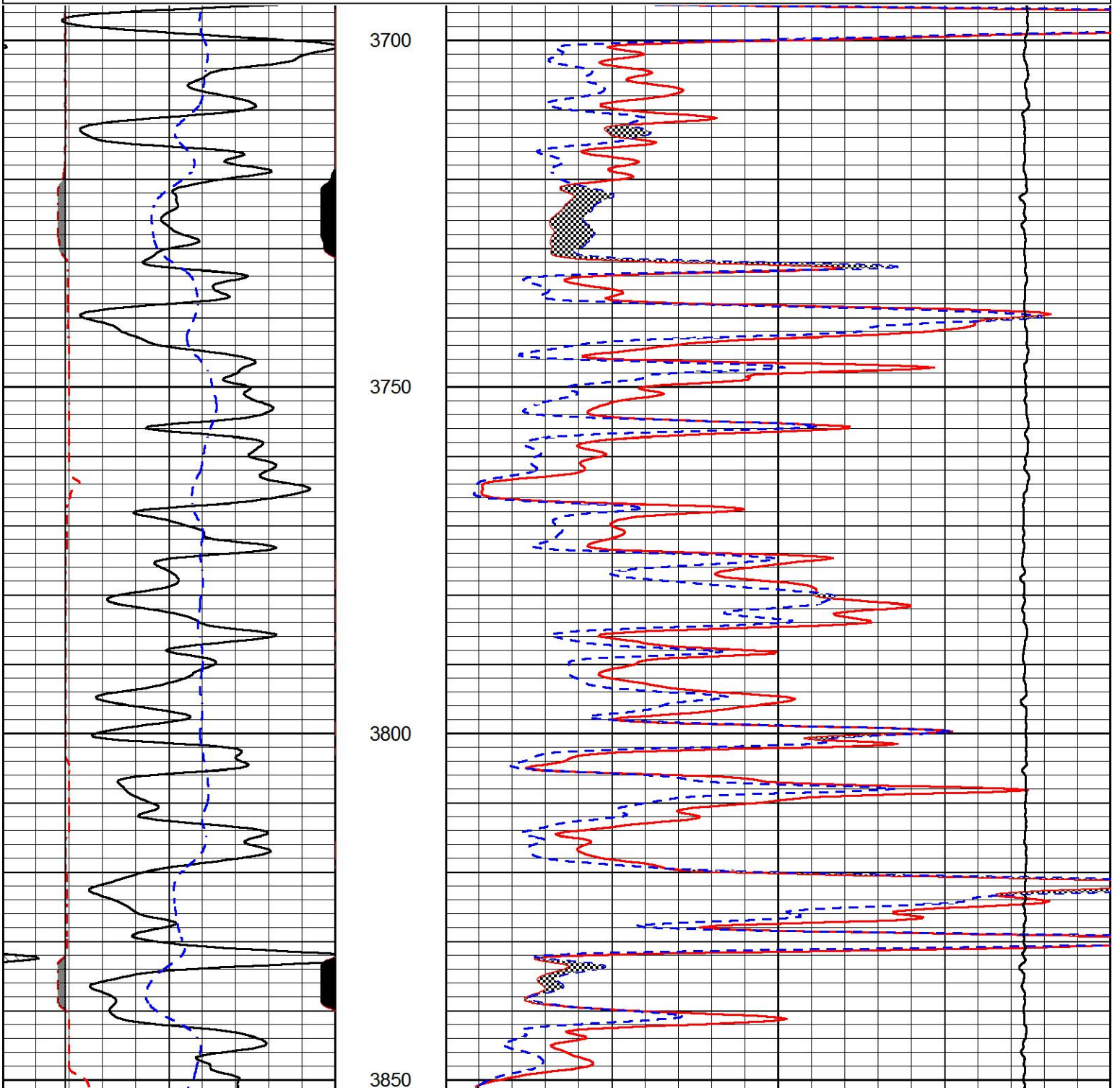
Dataset: funk\_3ko\_1\_5.db: field/well/stackml/pass3.1  
 Total length: 47.00 ft  
 Total weight: 835.00 lb  
 O.D.: 4.00 in

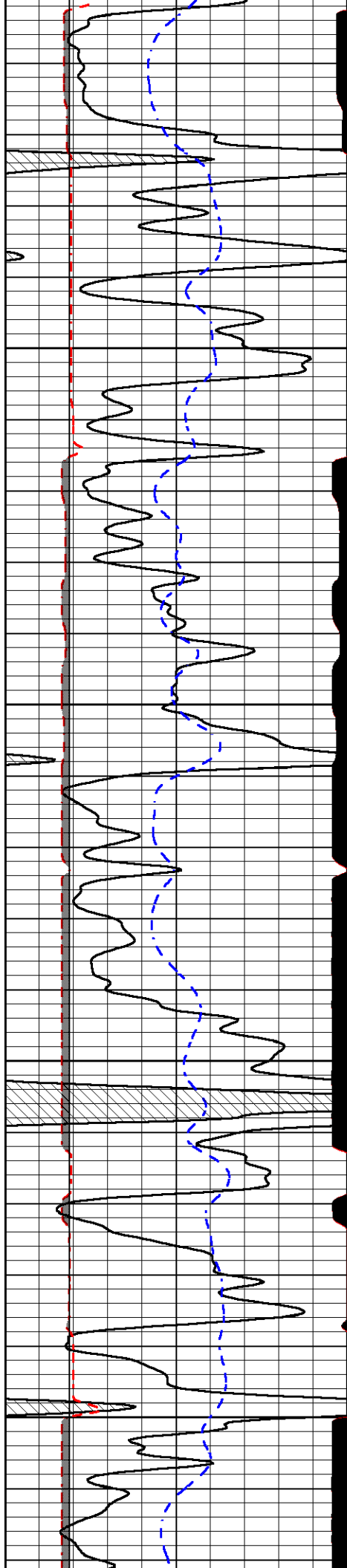
# MAIN PASS

Database File funk\_3ko\_1\_5.db  
 Dataset Pathname stackml/pass3.1  
 Presentation Format micro  
 Dataset Creation Wed Jan 08 15:52:45 2020  
 Charted by Depth in Feet scaled 1:240

0	GAMMA RAY (GAPI)	150
6	MICRO CALIPER (in)	16
6	BIT SIZE (in)	16
-200	SP (mV)	0

0	MICRO INVERSE 1 X 1 (Ohm-m)	40
0	MICRO NORMAL 2" (Ohm-m)	40
15000	LINE TENSION (lb)	0



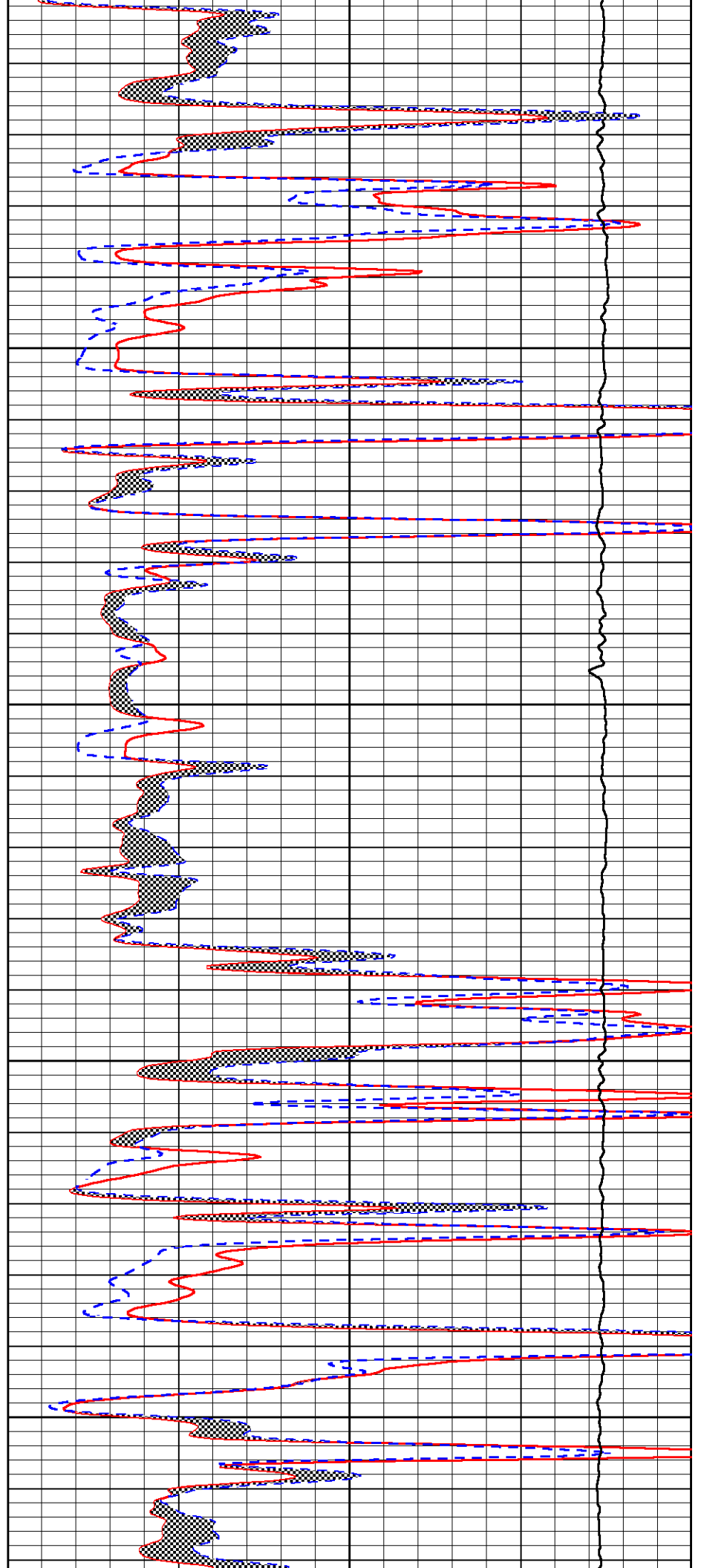


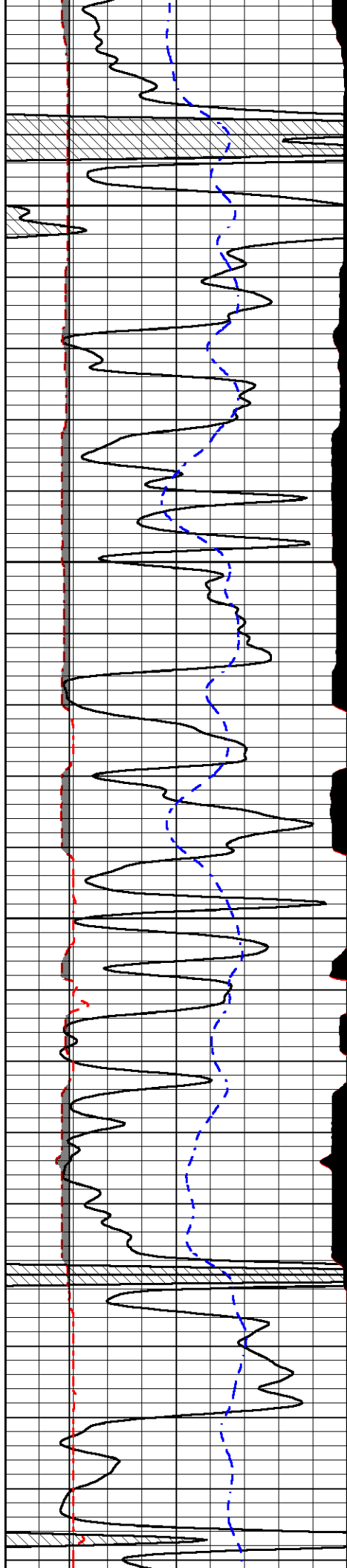
3900

3950

4000

4050



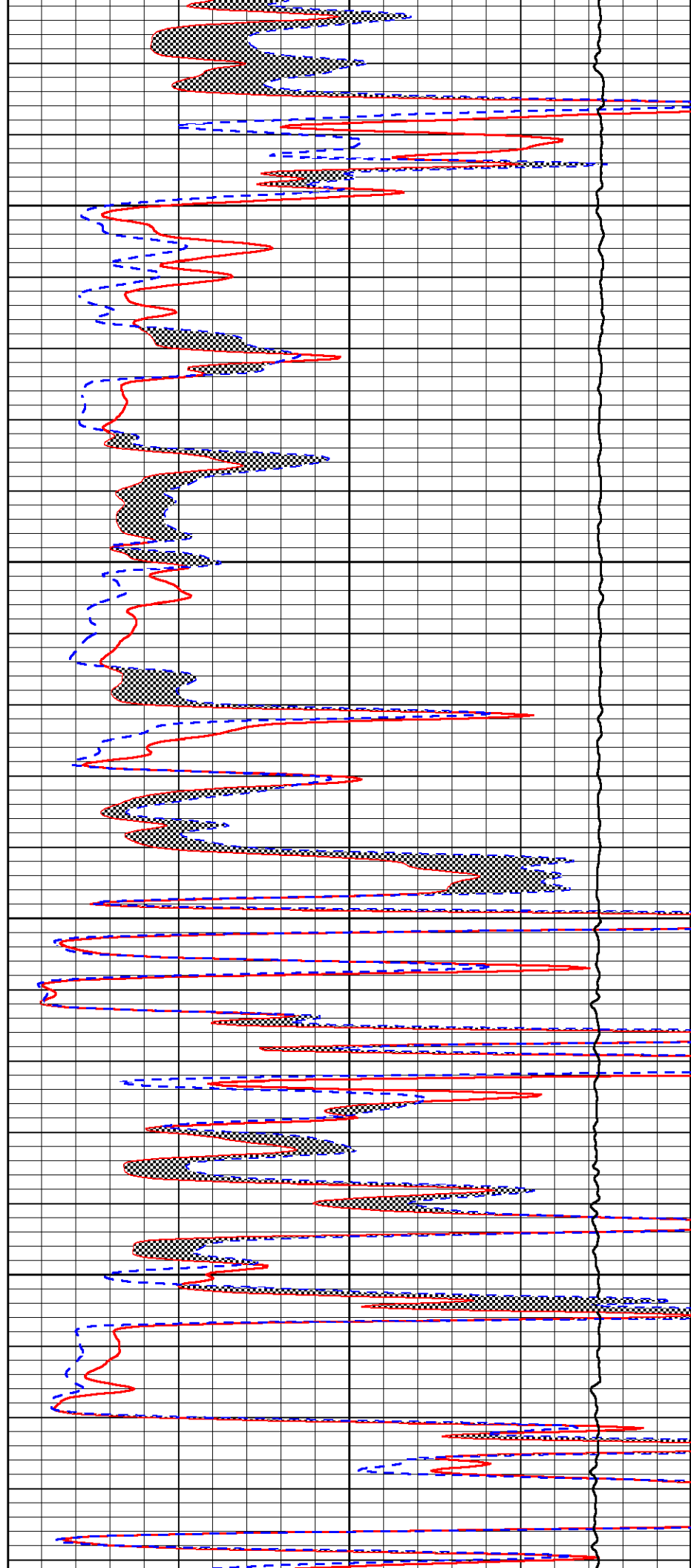


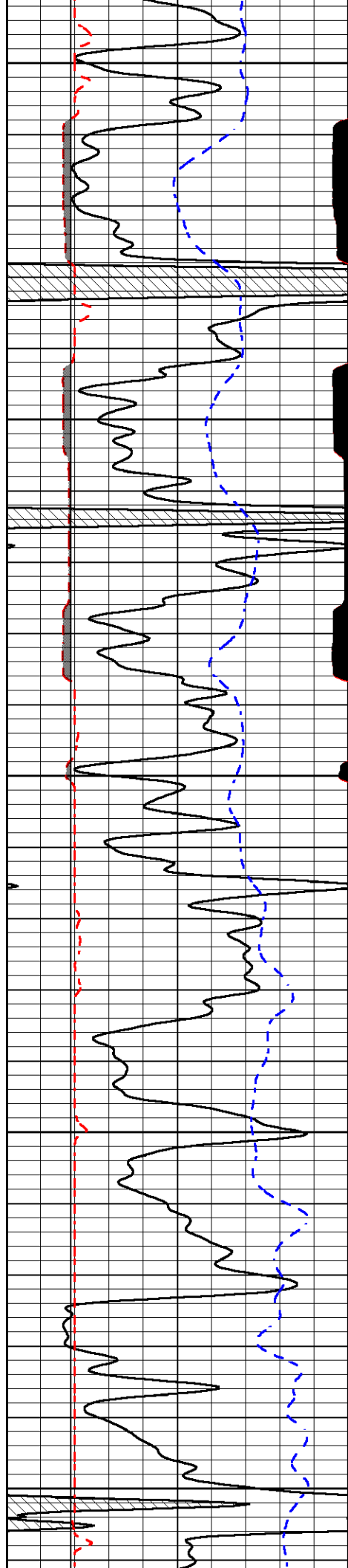
4100

4150

4200

4250





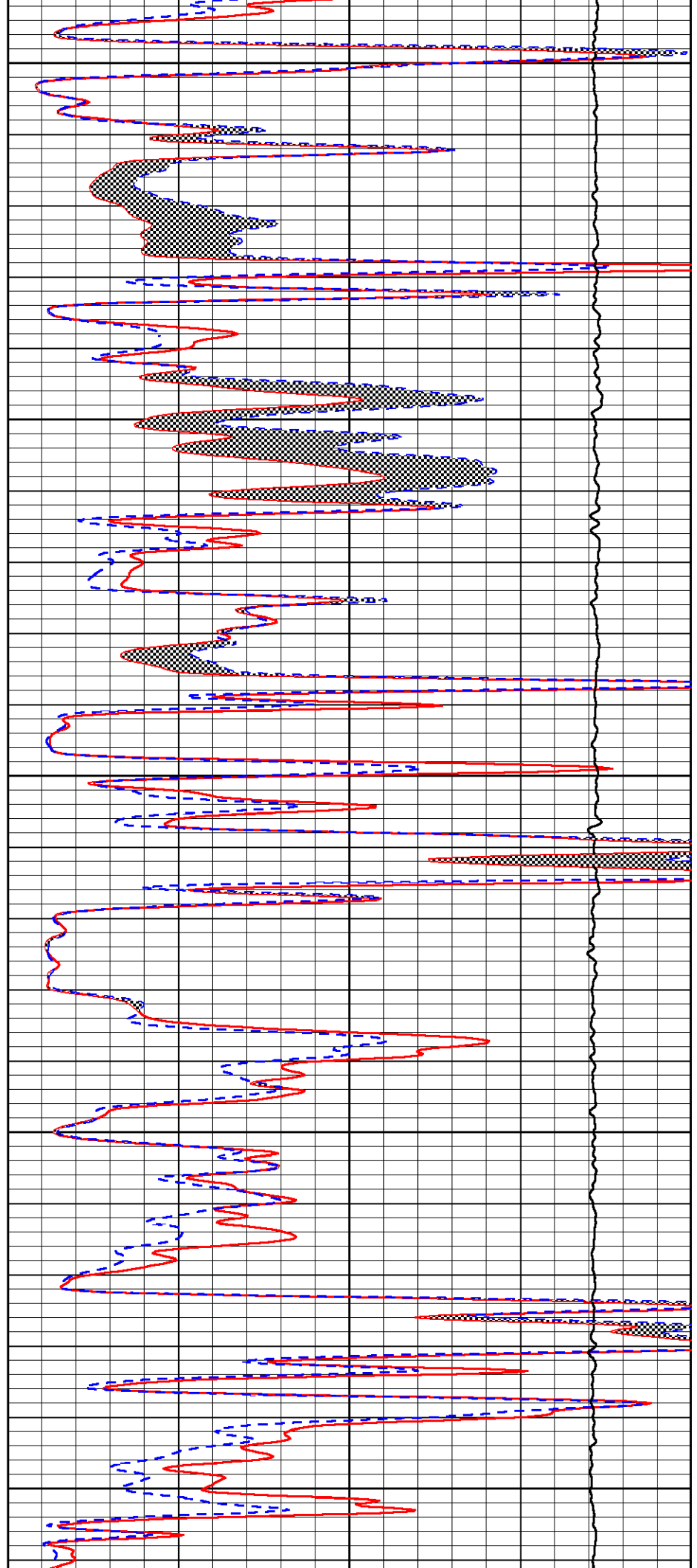
4300

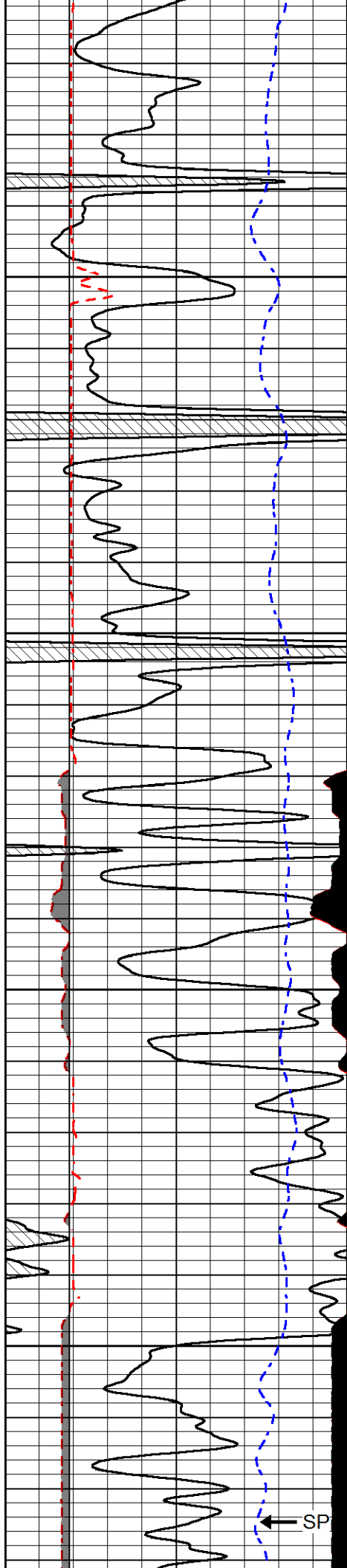
4350

4400

4450

4500



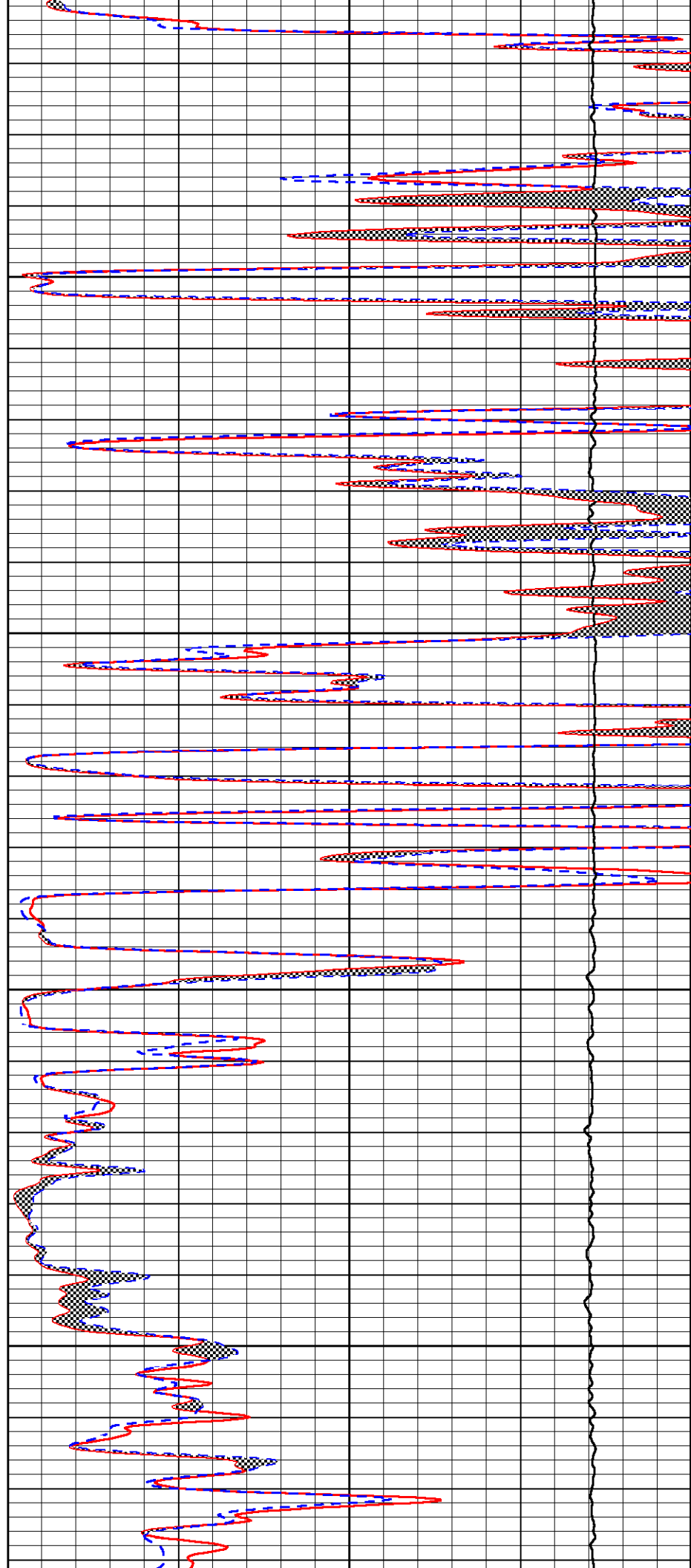


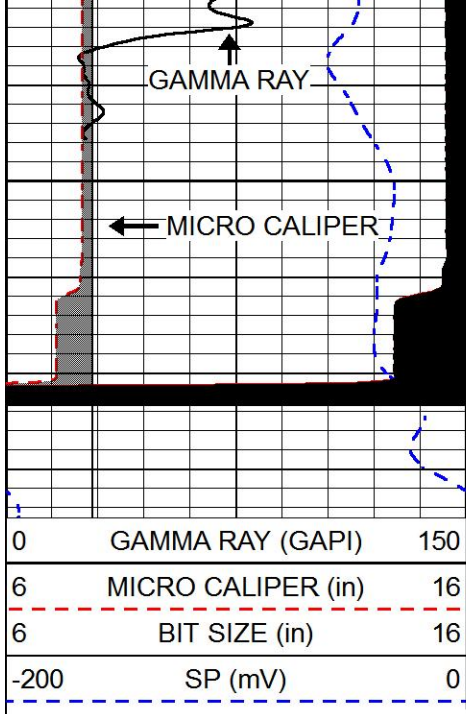
4550

4600

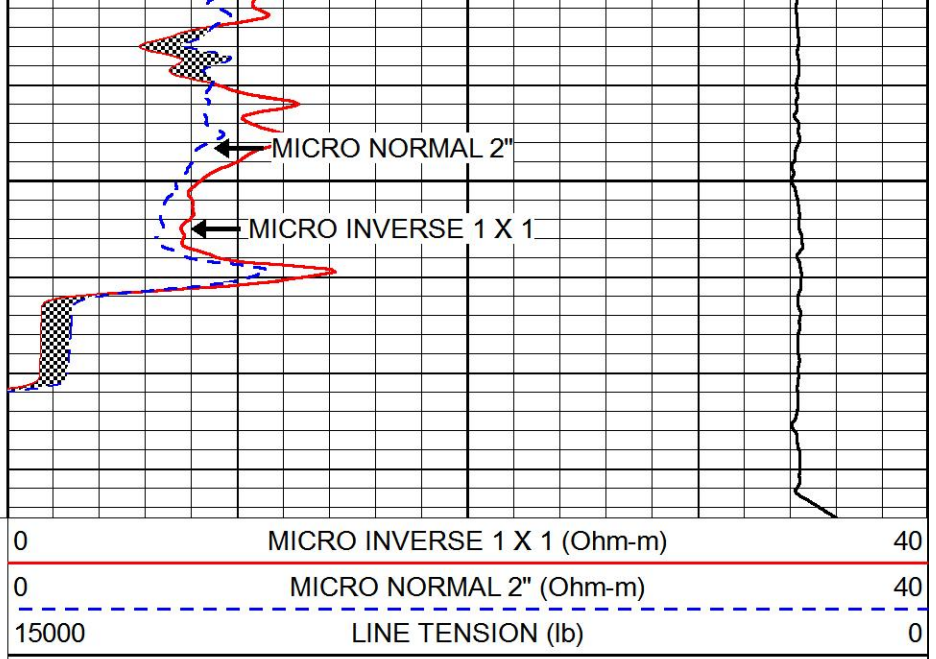
4650

4700



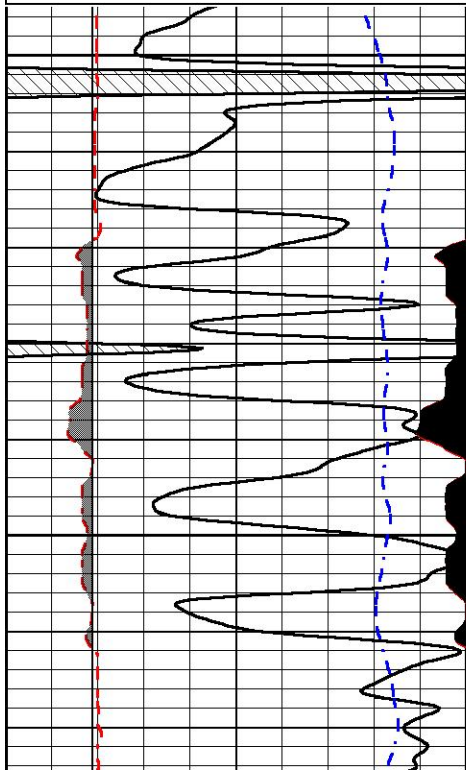
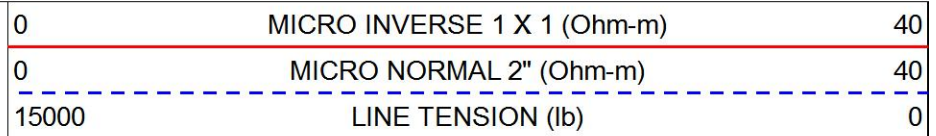
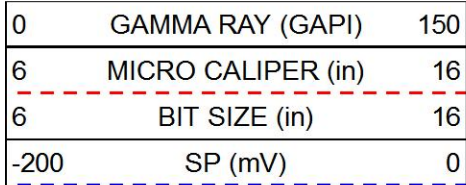


4750



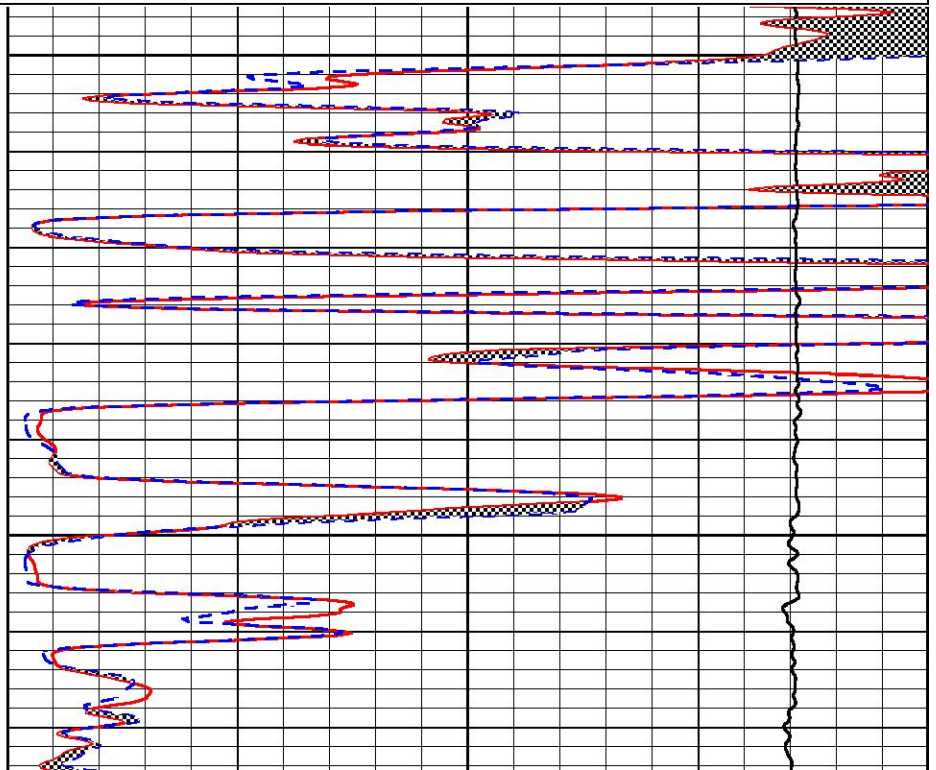
# REPEAT SECTION

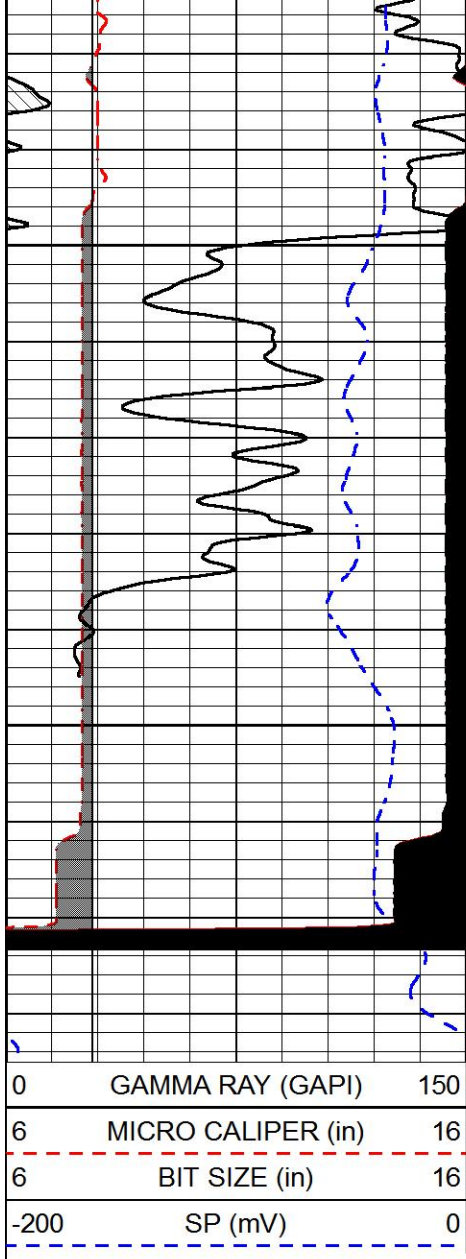
Database File funk\_3ko\_1\_5.db  
 Dataset Pathname stackml/pass2.1  
 Presentation Format micro  
 Dataset Creation Wed Jan 08 15:28:43 2020  
 Charted by Depth in Feet scaled 1:240



4600

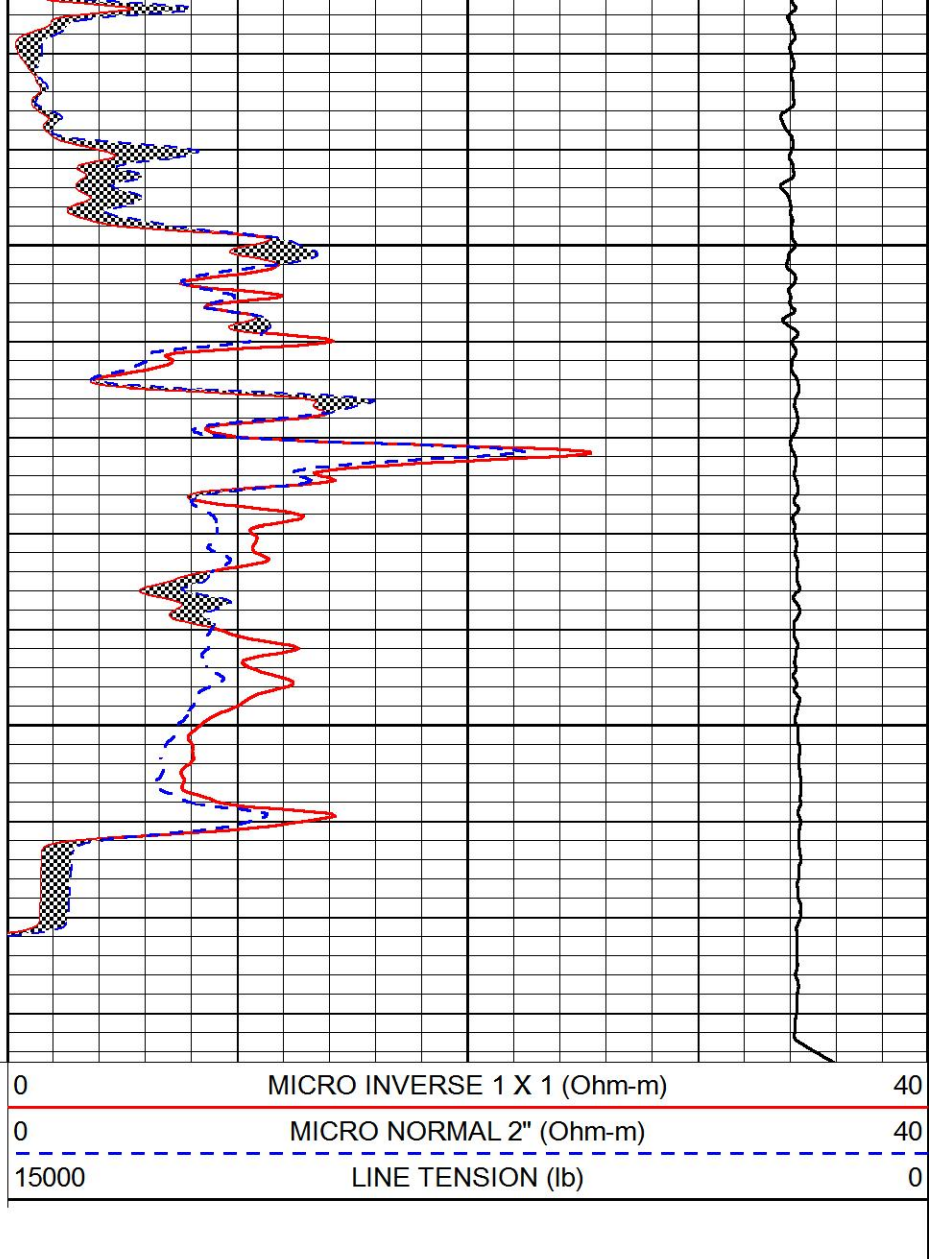
4650





4700

4750



Company FUNK PETROLEUM, LLC  
 Well 3KO #1-5  
 Field WILDCAT  
 County THOMAS  
 State KANSAS