



**BOREHOLE COMPENSATED  
SONIC LOG**

Company **FUNK PETROLEUM, LLC**  
 Well **3KO #1-5**  
 Field **WILDCAT**  
 County **THOMAS**  
 State **KANSAS**

Company **FUNK PETROLEUM, LLC**  
 Well **3KO #1-5**  
 Field **WILDCAT**  
 County **THOMAS** State **KANSAS**

Location: **API #: 15-193-21069-00-00**  
**1783' FNL & 335' FEL**  
**SEC 5 TWP 7S RGE 34W**  
 Permanent Datum **GROUND LEVEL Elevation 3203'**  
 Log Measured From **KELLY BUSHING**  
 Drilling Measured From **KELLY BUSHING**  
 Other Services **DIL/MEL CNL/CDL**  
 Elevation **K.B. 3208'**  
**D.F. N/A**  
**G.L. 3203'**

Date	1/8/2020						
Run Number	TWO						
Type Log	BHCS						
Depth Driller	4780'						
Depth Logger	4782'						
Bottom Logged Interval	4771'						
Top Logged Interval	300'						
Type Fluid In Hole	CHEMICAL						
Salinity, PPM CL	6200						
Density	9.5						
Level	FULL						
Max. Rec. Temp. F	124 DEG/F						
Operating Rig Time	4 HOURS						
Equipment -- Location	P-108 HAYS						
Recorded By	J. HENRICKSON						
Witnessed By	TOM FUNK						
Borehole Record							
Run No.	Bit	From	To	Size	Wgt.	From	To
ONE	12.25"	0	348'	8.625"	23#	0	348'
TWO	7.875"	348'	TD				
Casing Record							

<<< Fold Here >>>

All interpretations are opinions based on inferences from electrical or other measurements and Pioneer Wireline Services, LLC cannot and does not guarantee the accuracy or correctness of any interpretation, and Pioneer Wireline Services, LLC will not be liable or responsible for any loss, costs, damages, or expenses incurred or sustained by anyone resulting from any interpretation made by any of our officers, agents or employees.

**Comments**

**N/A DENOTES NOT AVAILABLE OR NON-APPLICABLE.**

**COLBY KANSAS  
WEST ON HWY 24 TO 15 ROAD, 5 3/4 NORTH, WEST INTO**

**Log Measured From: KELLY BUSHING      5    Ft. Above Permanent Datum**

**THANK YOU FOR USING PIONEER ENERGY SERVICES**  
**www.pioneerenergy.com      785-625-3858**

<b>Your Pioneer Energy Services Crew</b>	<b>This Log Record Was Witnessed By</b>
Engineer: <b>J. HENRICKSON</b>	Primary Witness: <b>TOM FUNK</b>
Operator: <b>K. PFANNENSTIEL</b>	Secondary Witness:
Operator:	Secondary Witness:
Operator:	Secondary Witness:

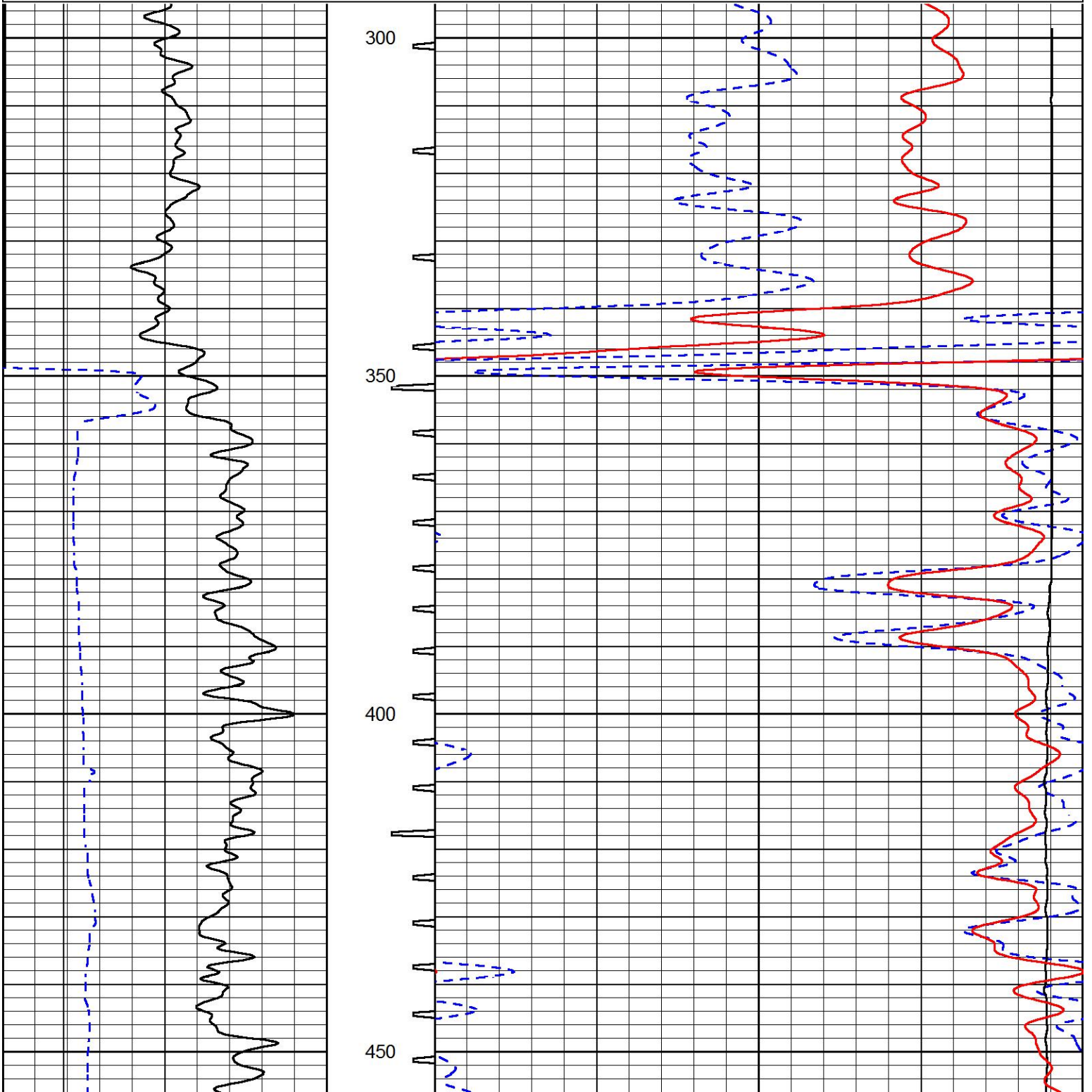
Sensor	Offset (ft)	Schematic	Description	Length (ft)	O.D. (in)	Weight (lb)
WVF4 WVF1	11.00 11.00		SLT-PENGO (0001)	16.00	3.50	300.00
WVF3 WVF2	9.00 9.00		CENT-SIE	3.00	2.00	10.00

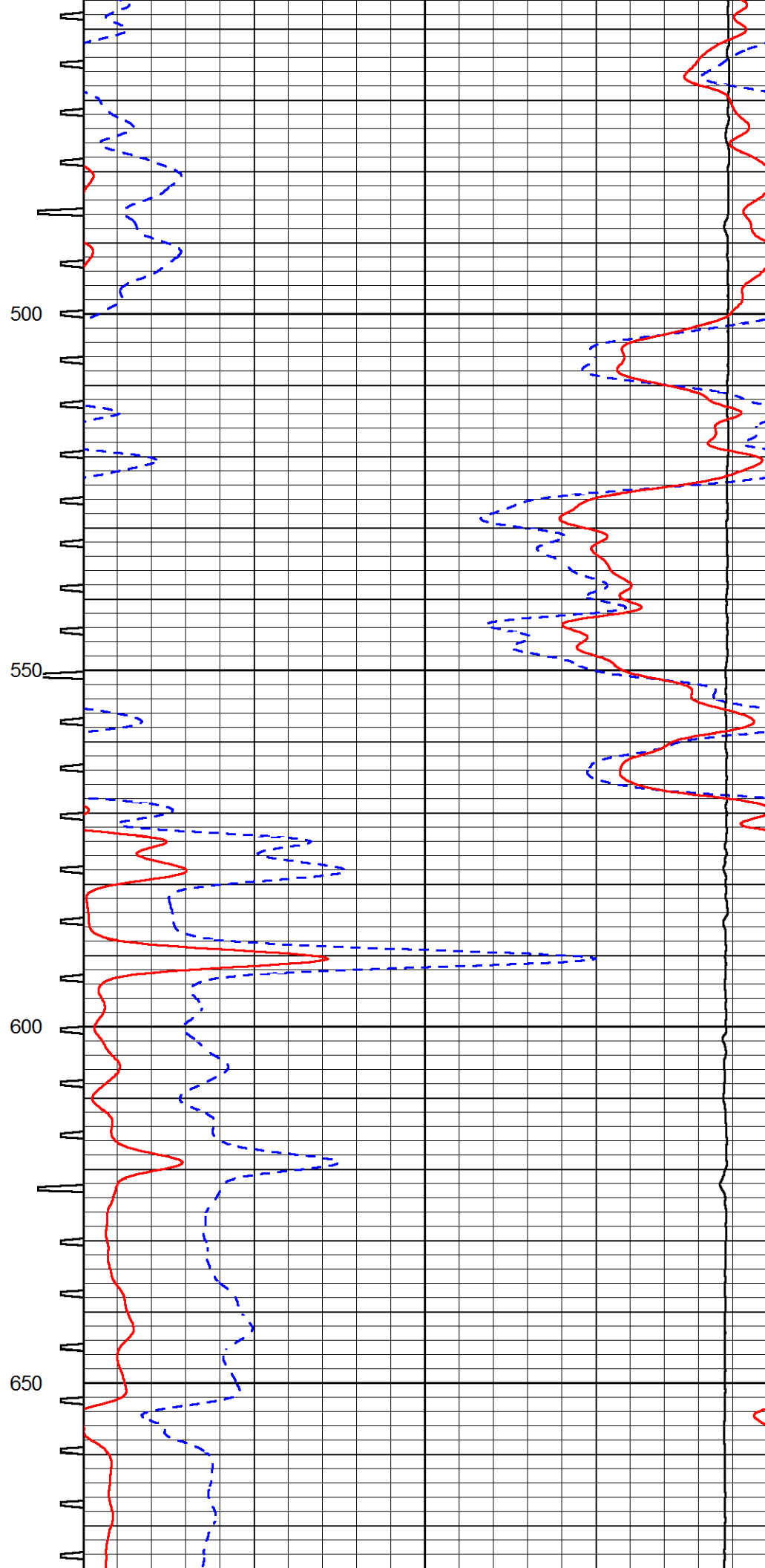
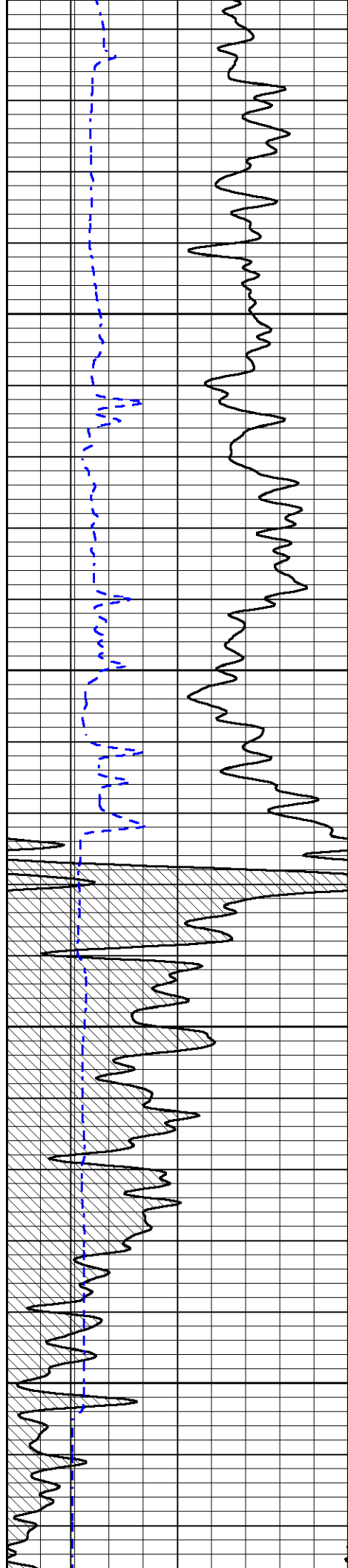
Dataset: funk\_3ko\_1\_5.db: field/well/SONIC/pass2  
 Total length: 19.00 ft  
 Total weight: 310.00 lb  
 O.D.: 3.50 in

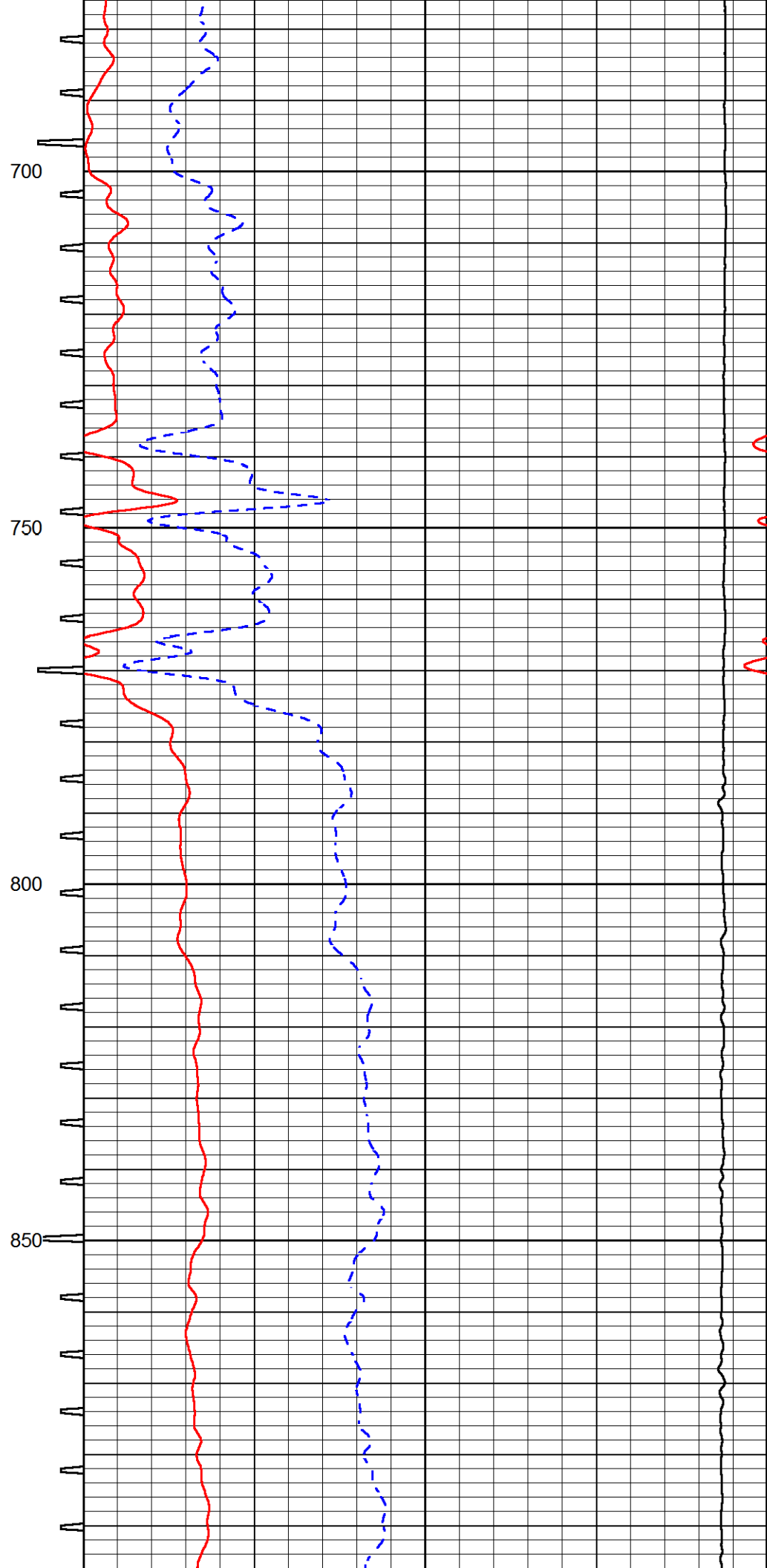
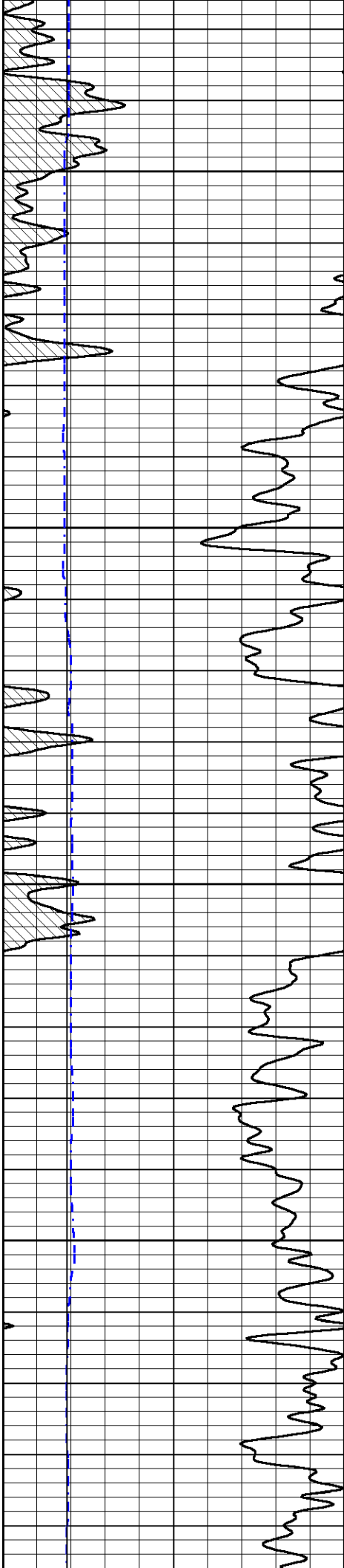
# MAIN PASS

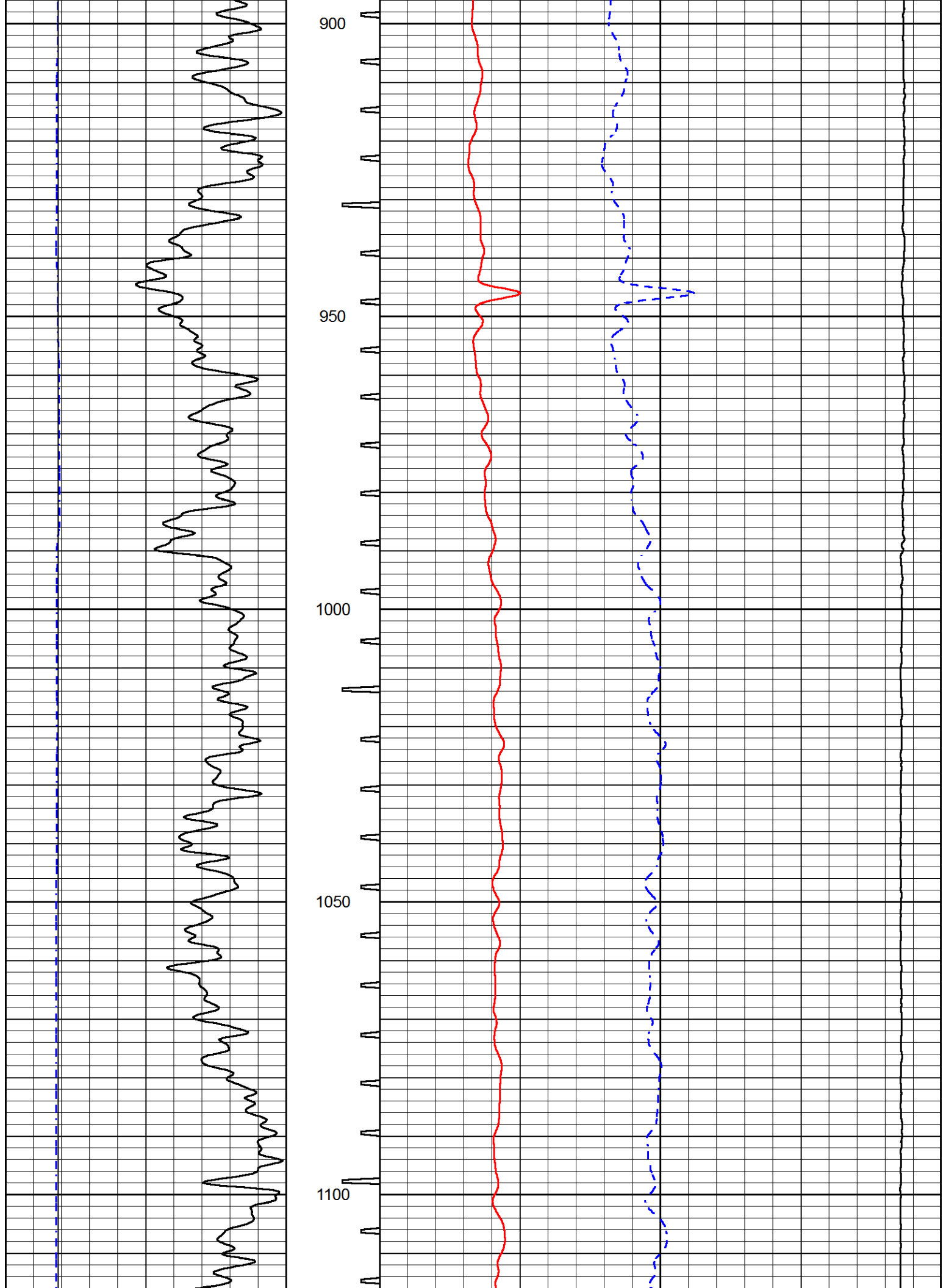
Database File funk\_3ko\_1\_5.db  
 Dataset Pathname stackml/pass3.1  
 Presentation Format sonic  
 Dataset Creation Wed Jan 08 15:52:45 2020  
 Charted by Depth in Feet scaled 1:240

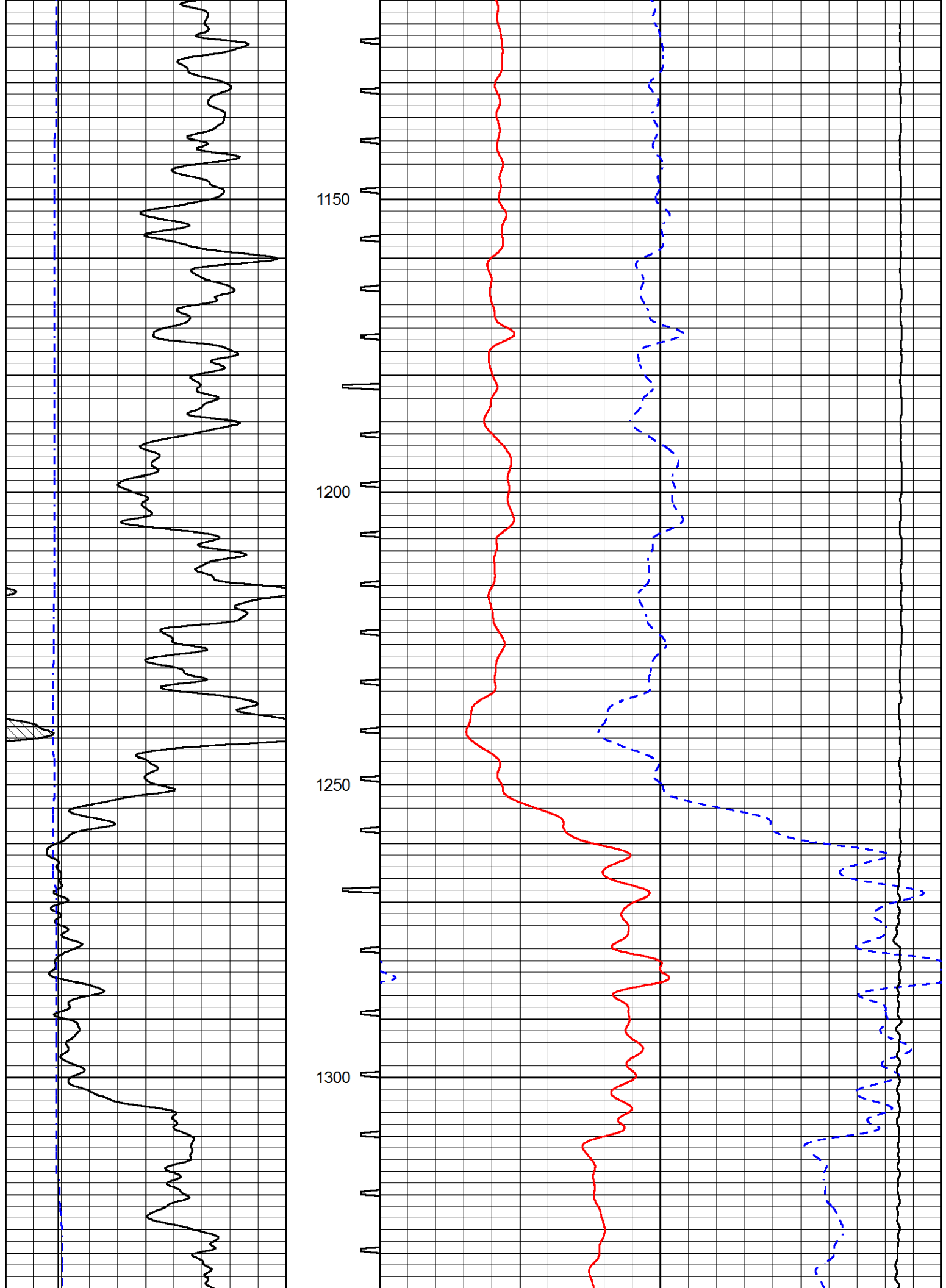
0	GAMMA RAY (GAPI)	150	SONIC INT	140	DELTA TIME (usec/ft) (usec/ft)	40
6	CALIPER (in)	16	RAVEL TIM	30	SONIC POROSITY (pu)	-10
6	BIT SIZE	16	(msec)	15000	LINE TENSION (lb)	0

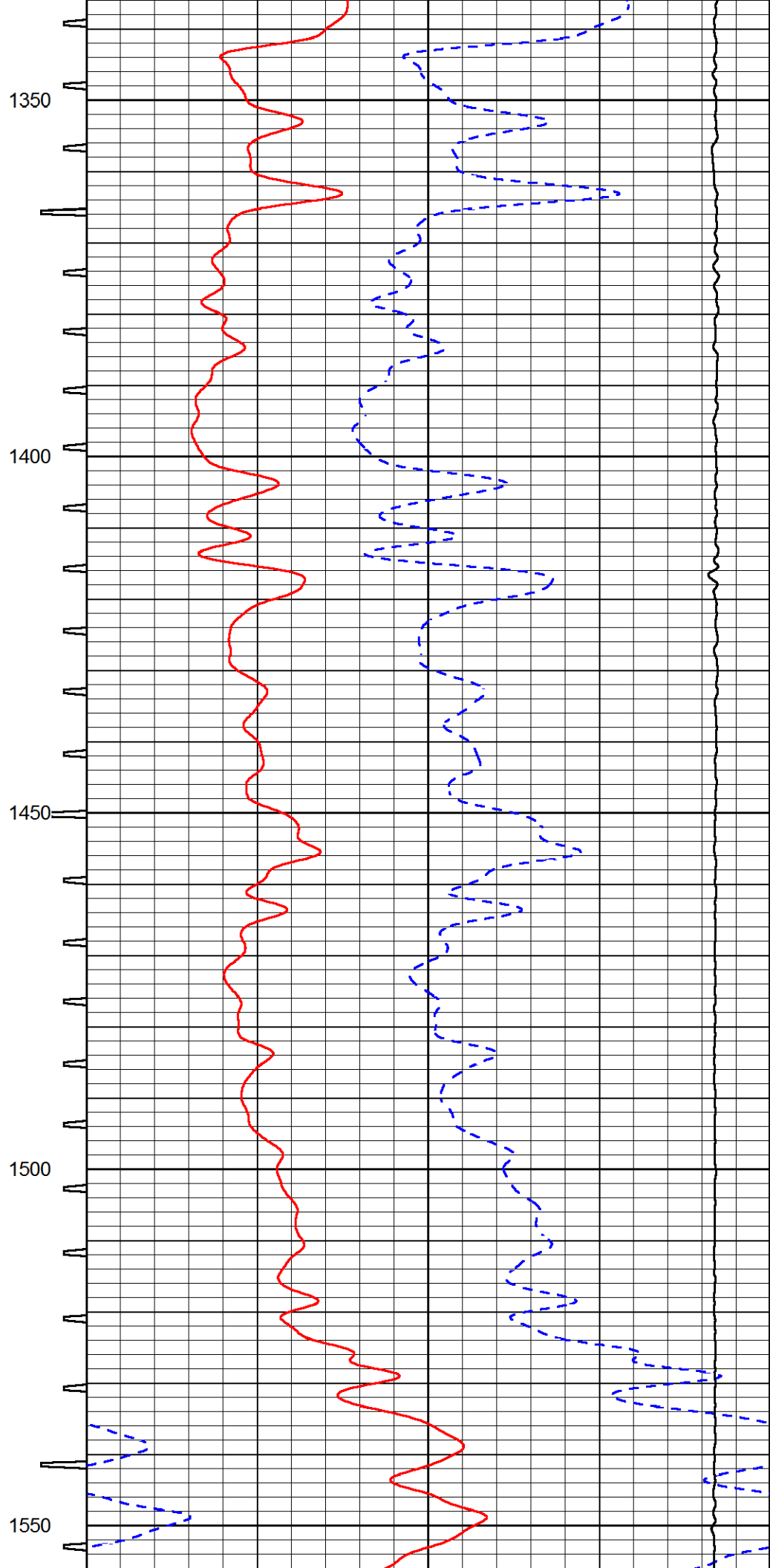
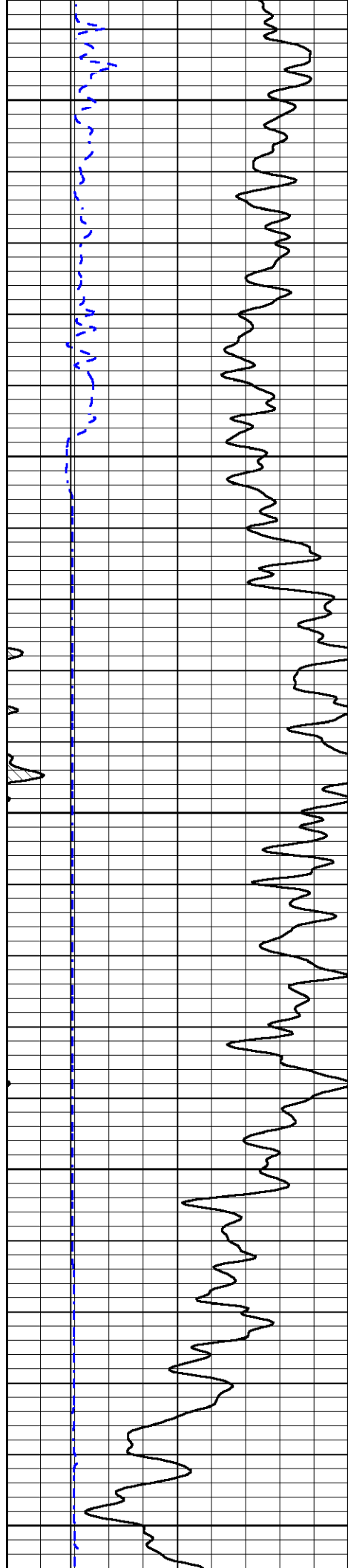












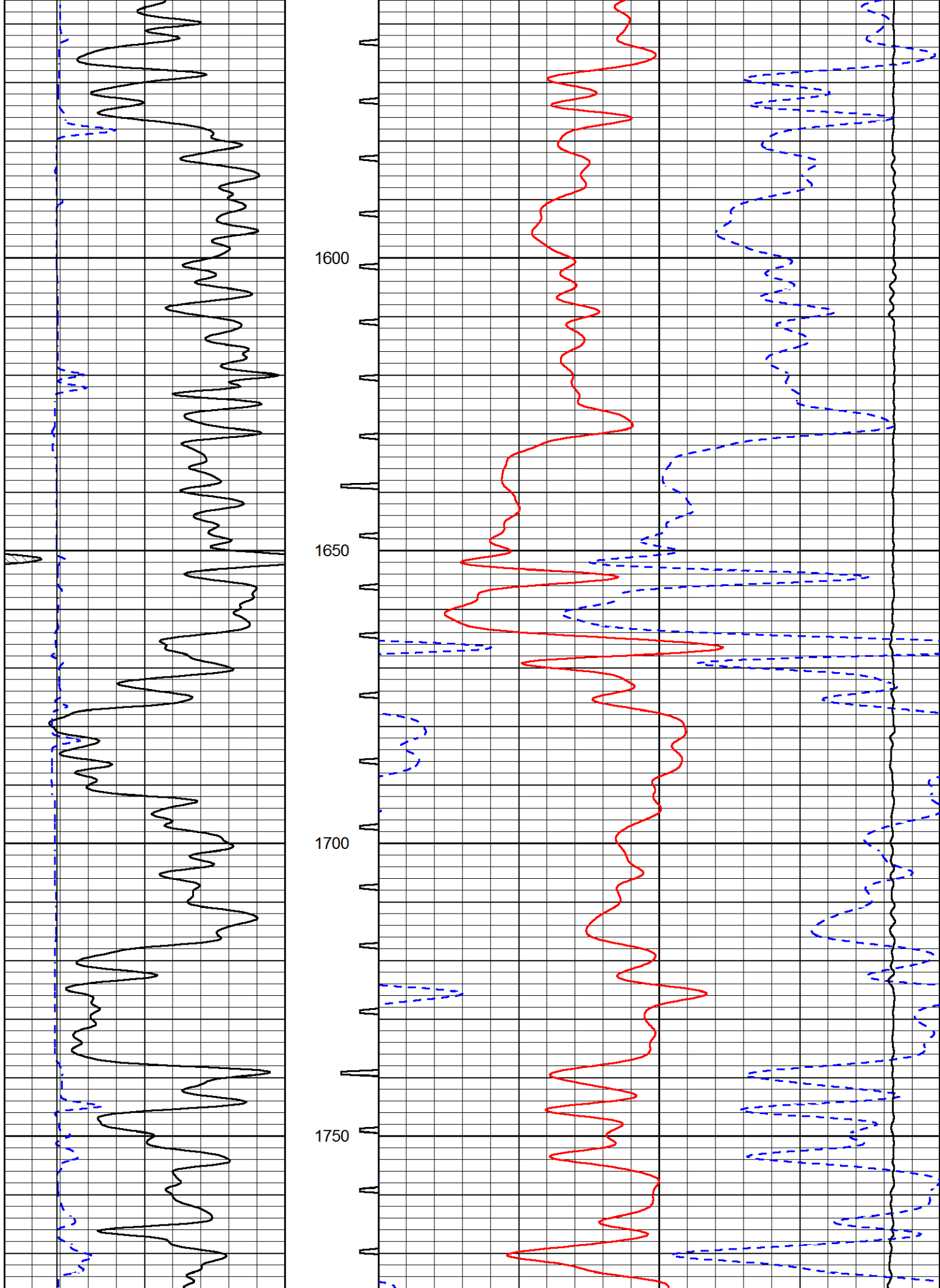
1350

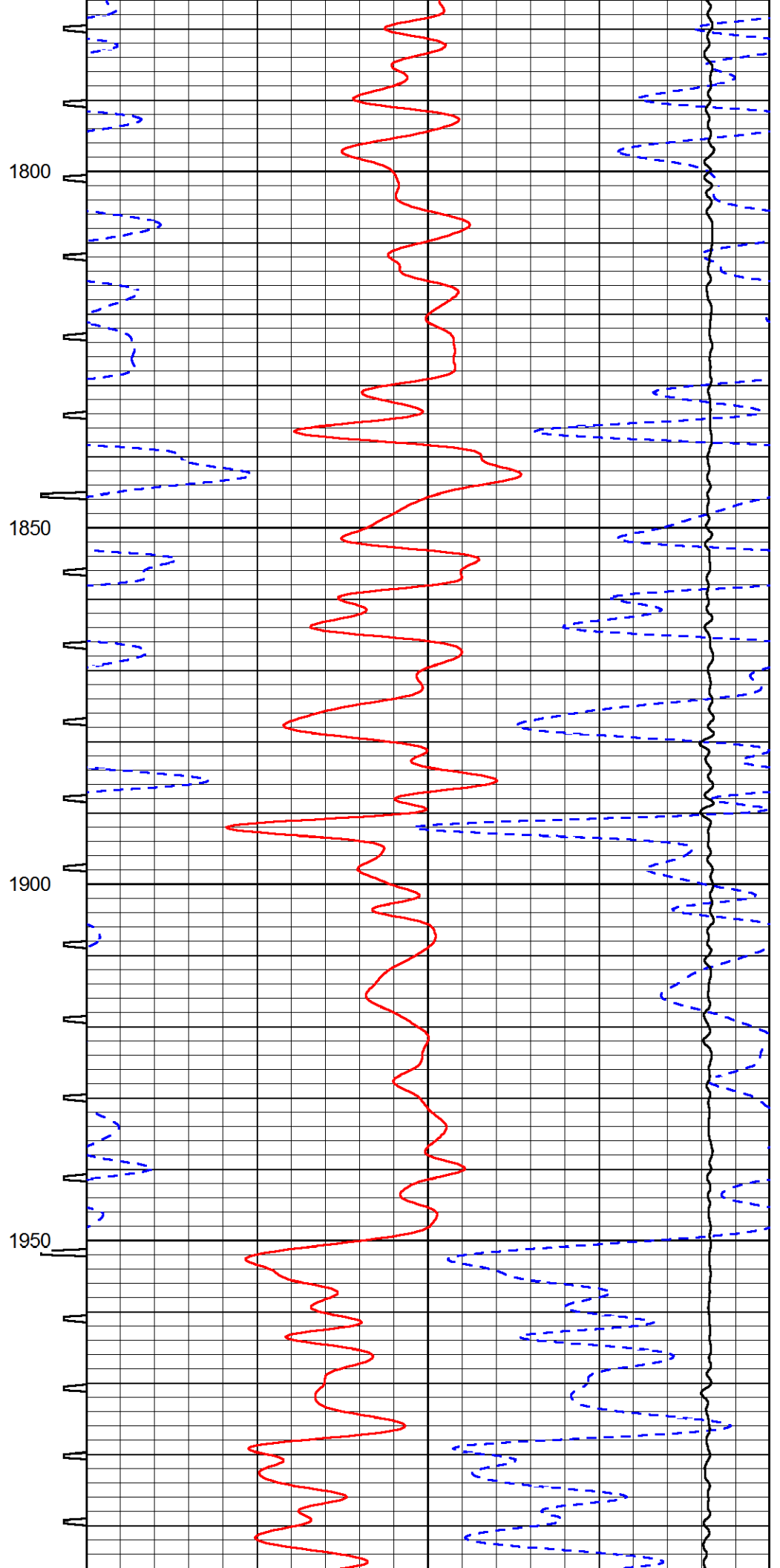
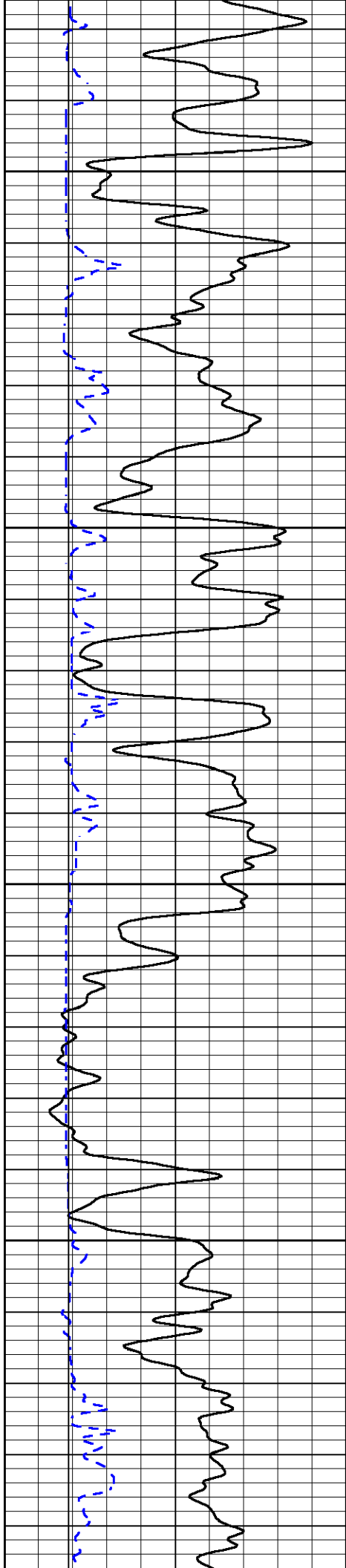
1400

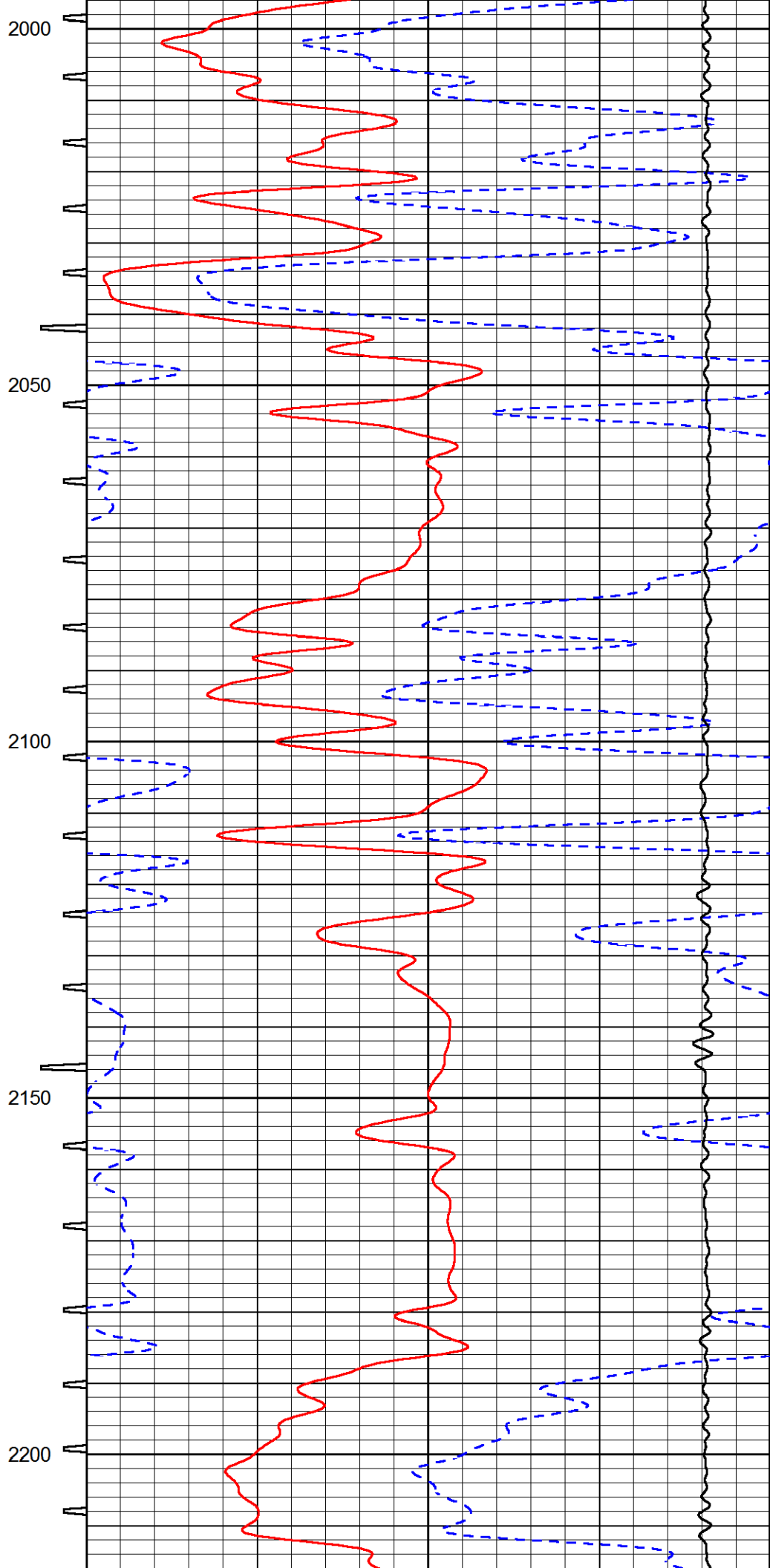
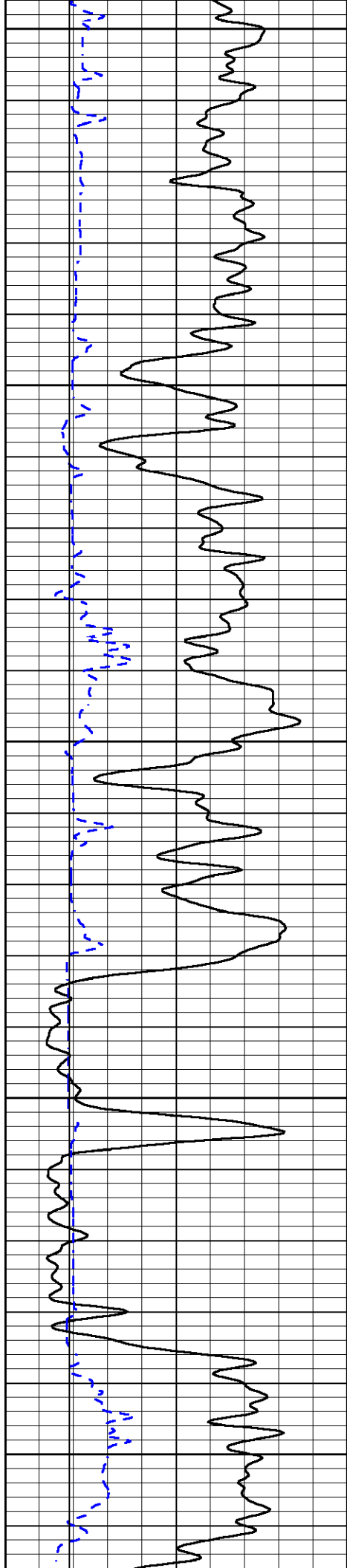
1450

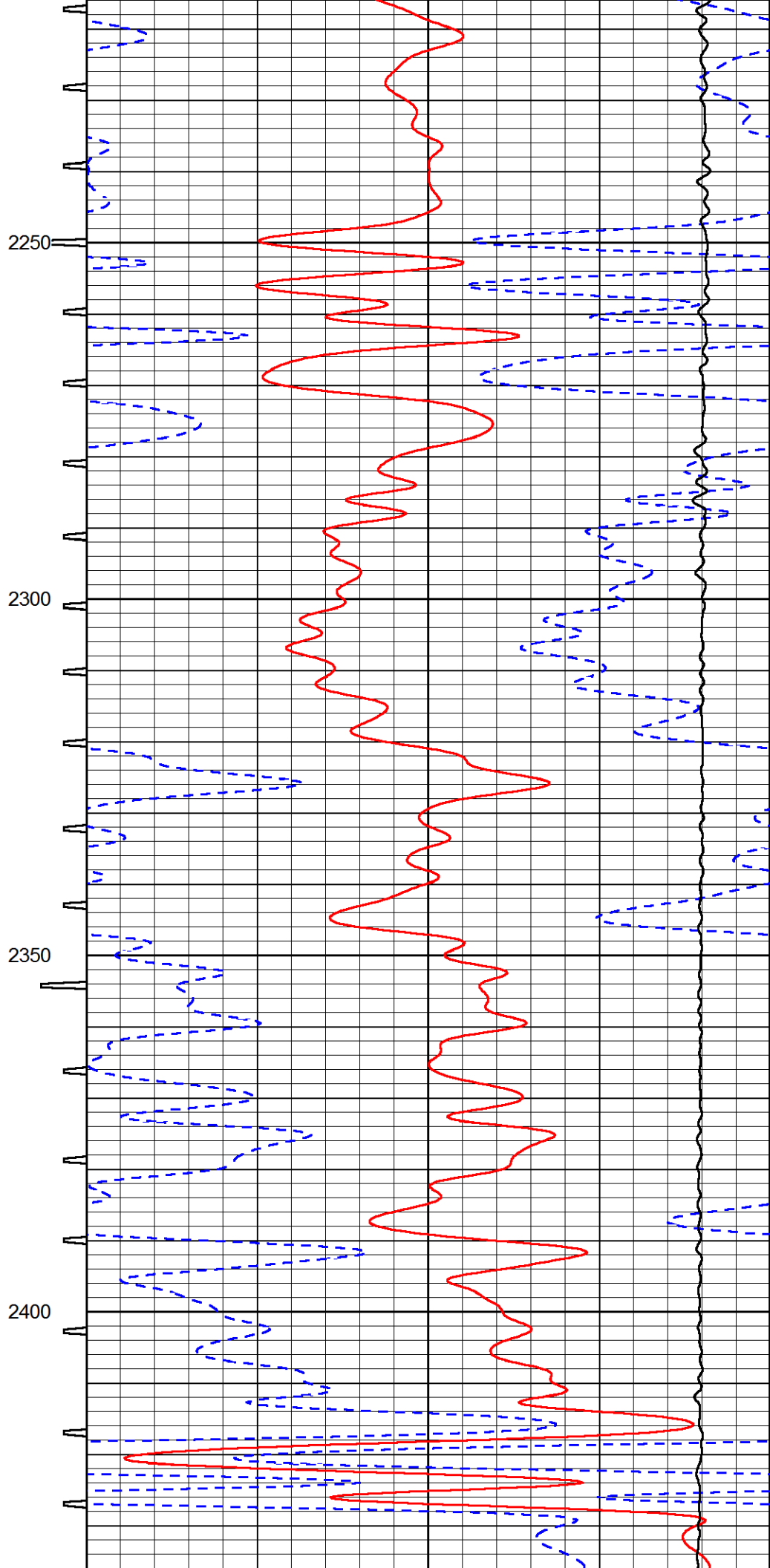
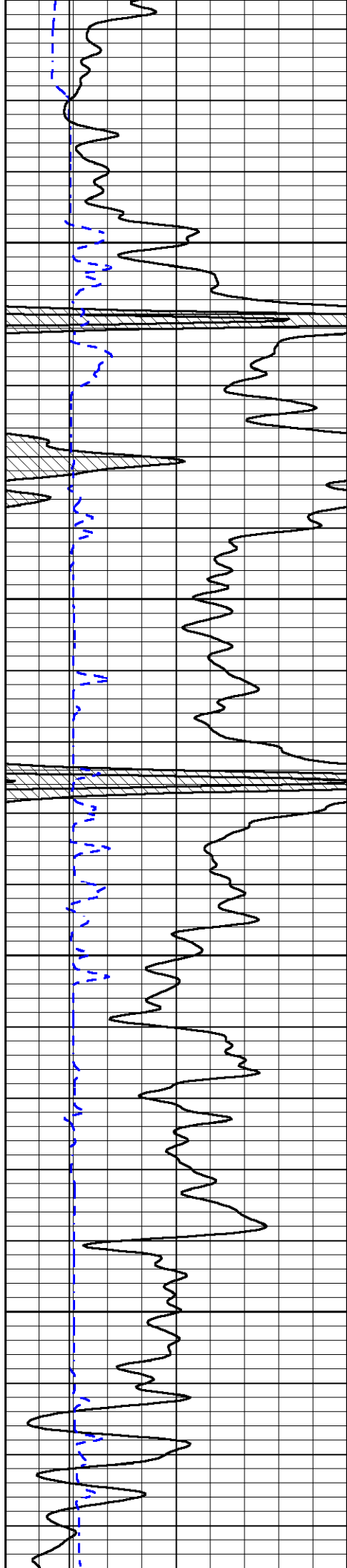
1500

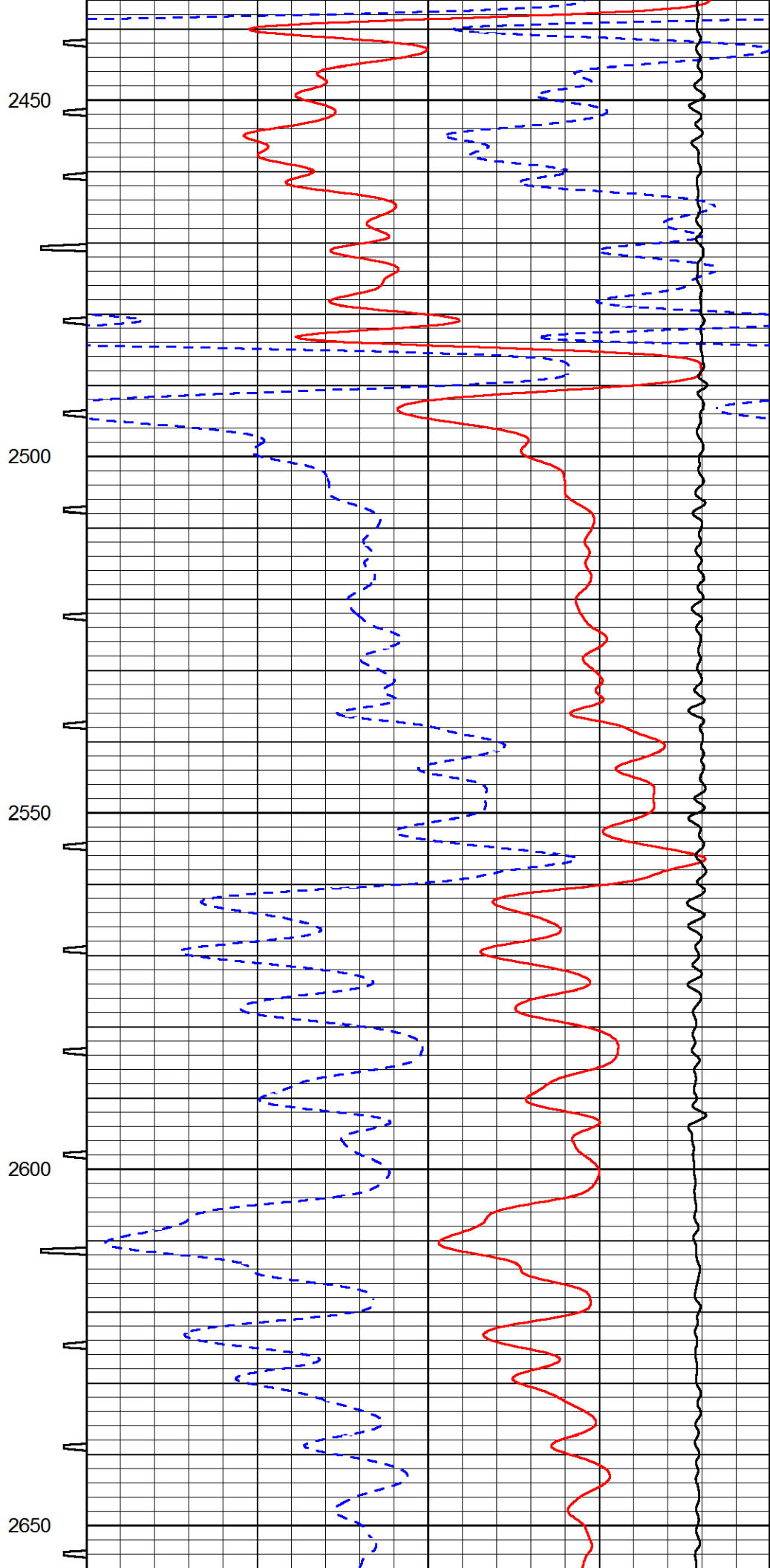
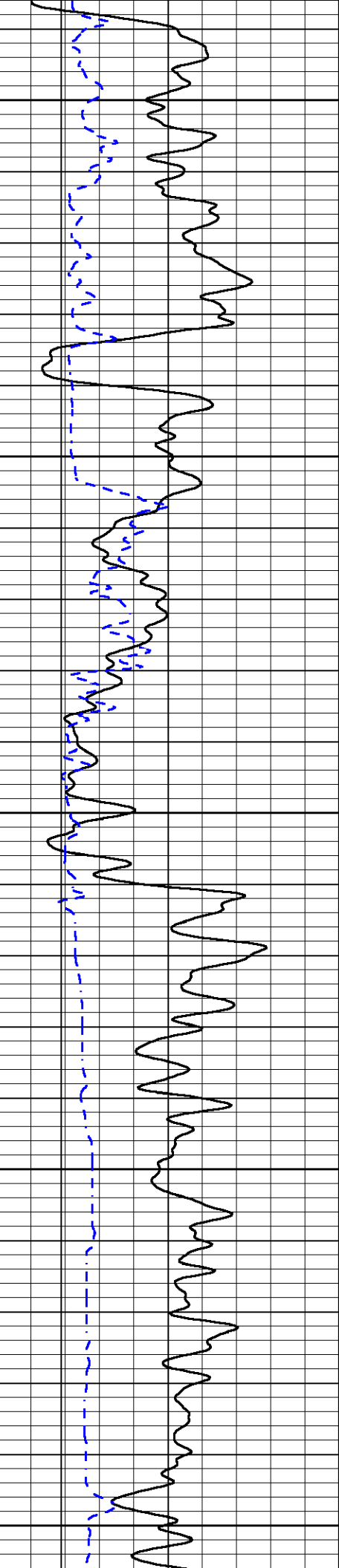
1550

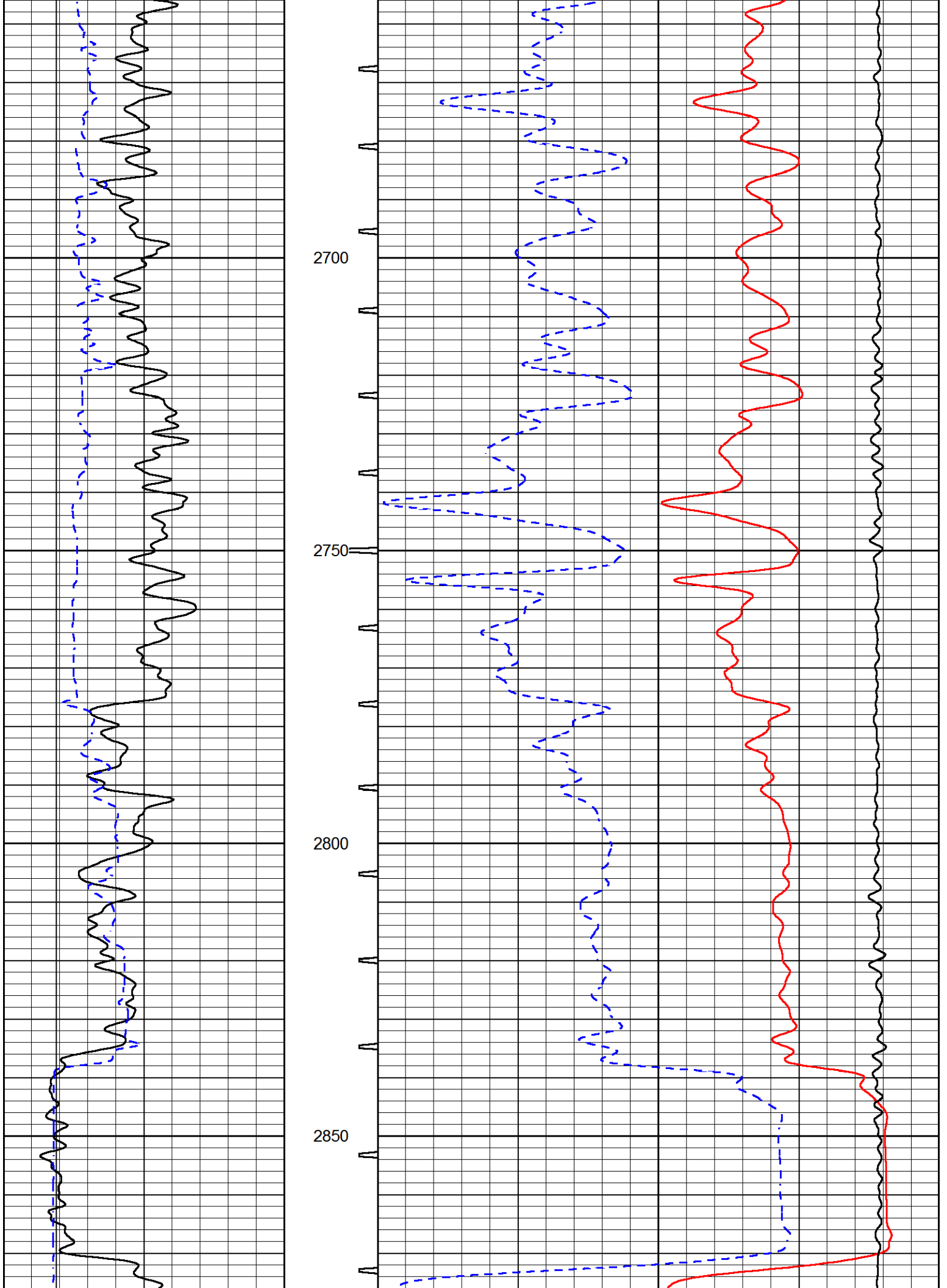


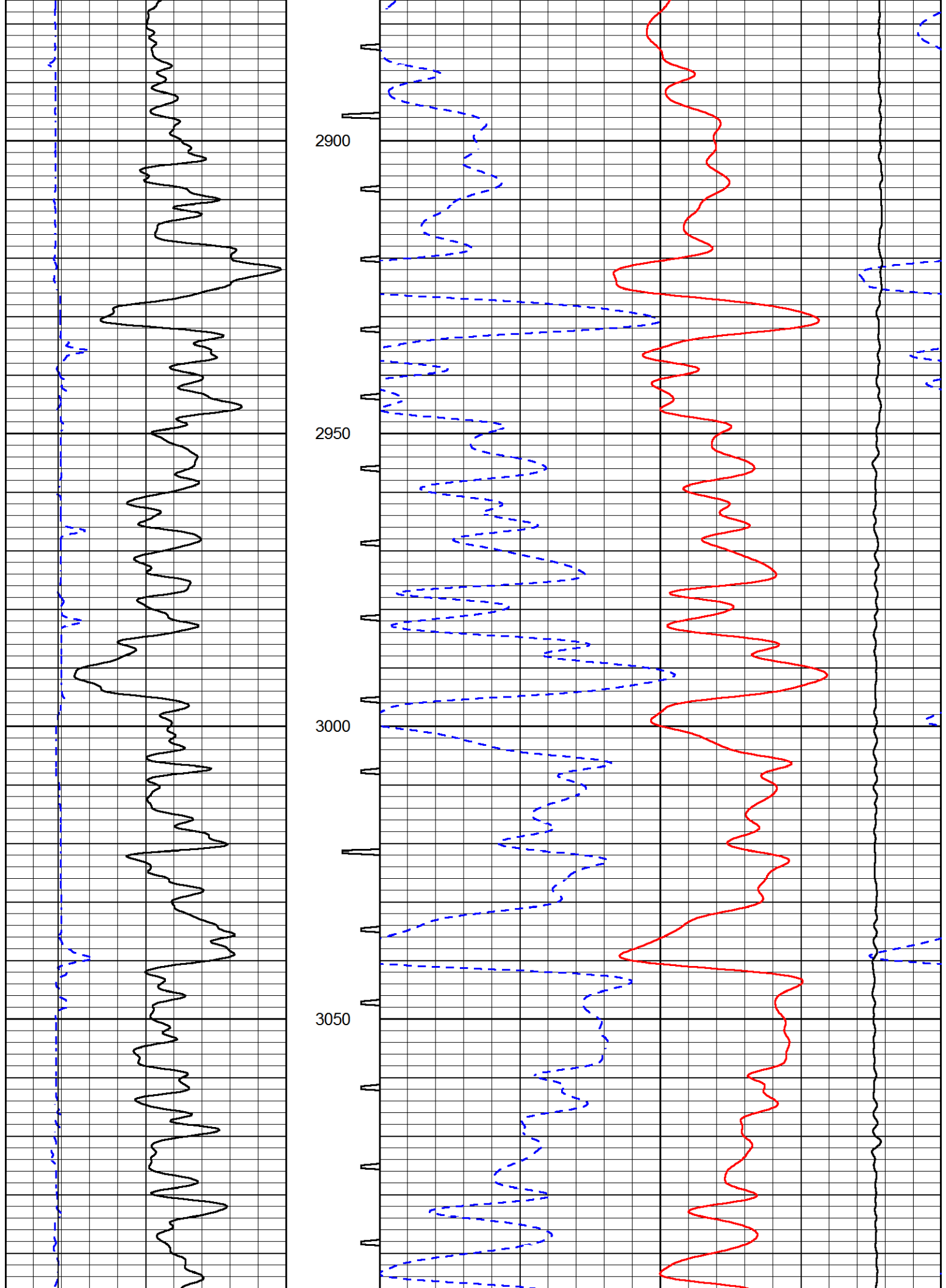


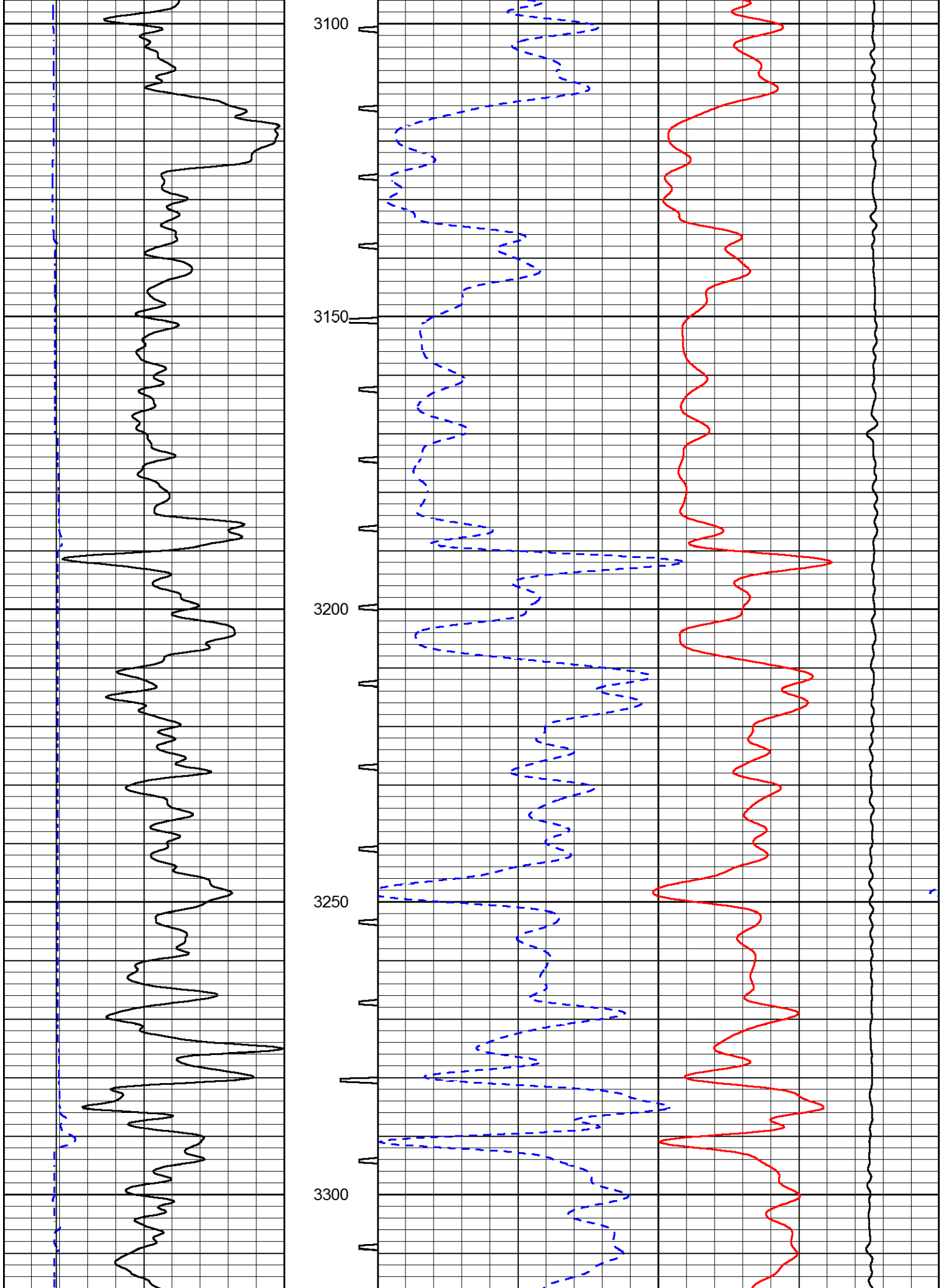


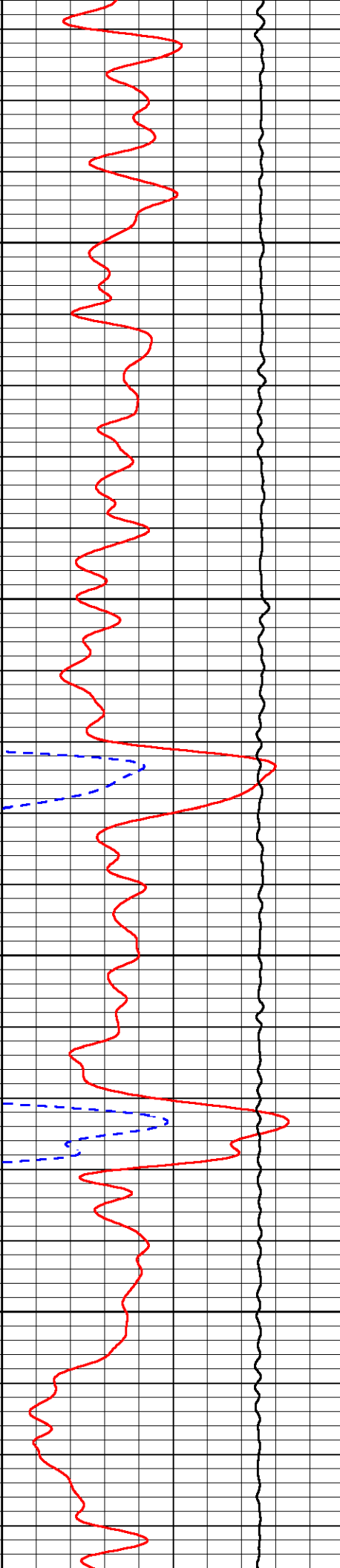
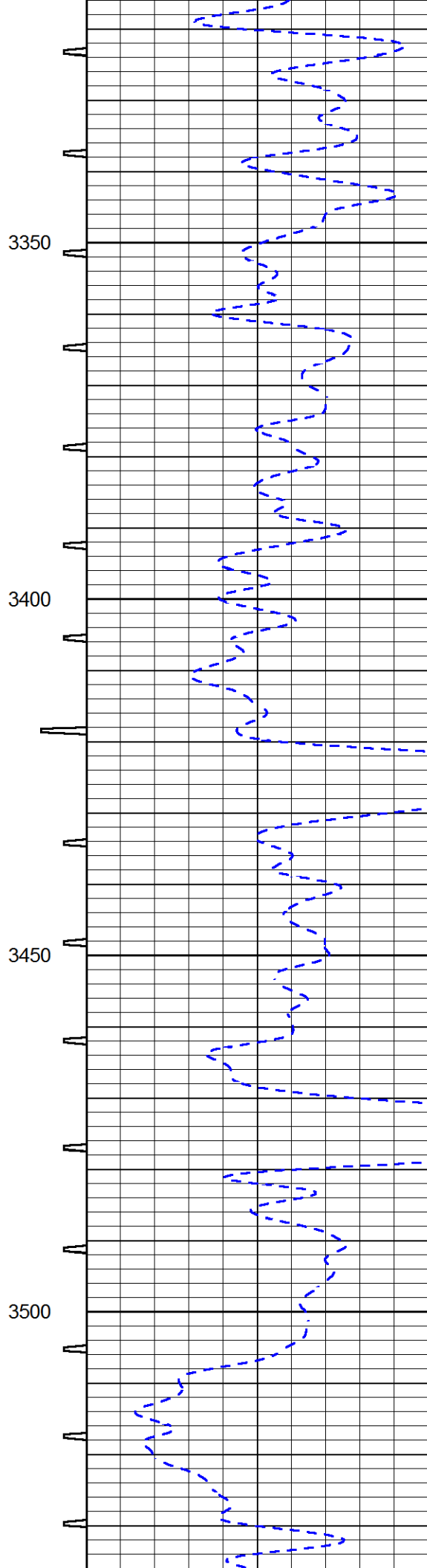
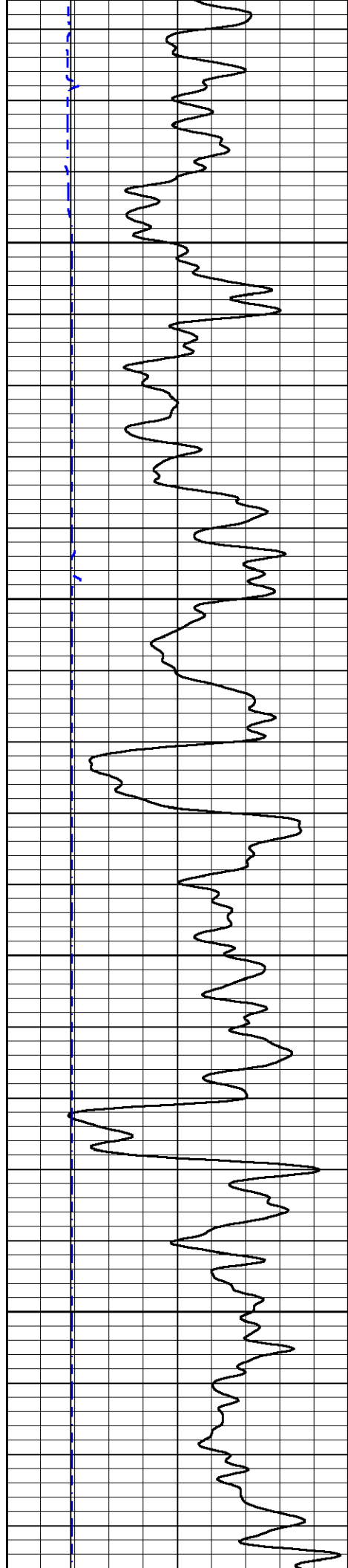


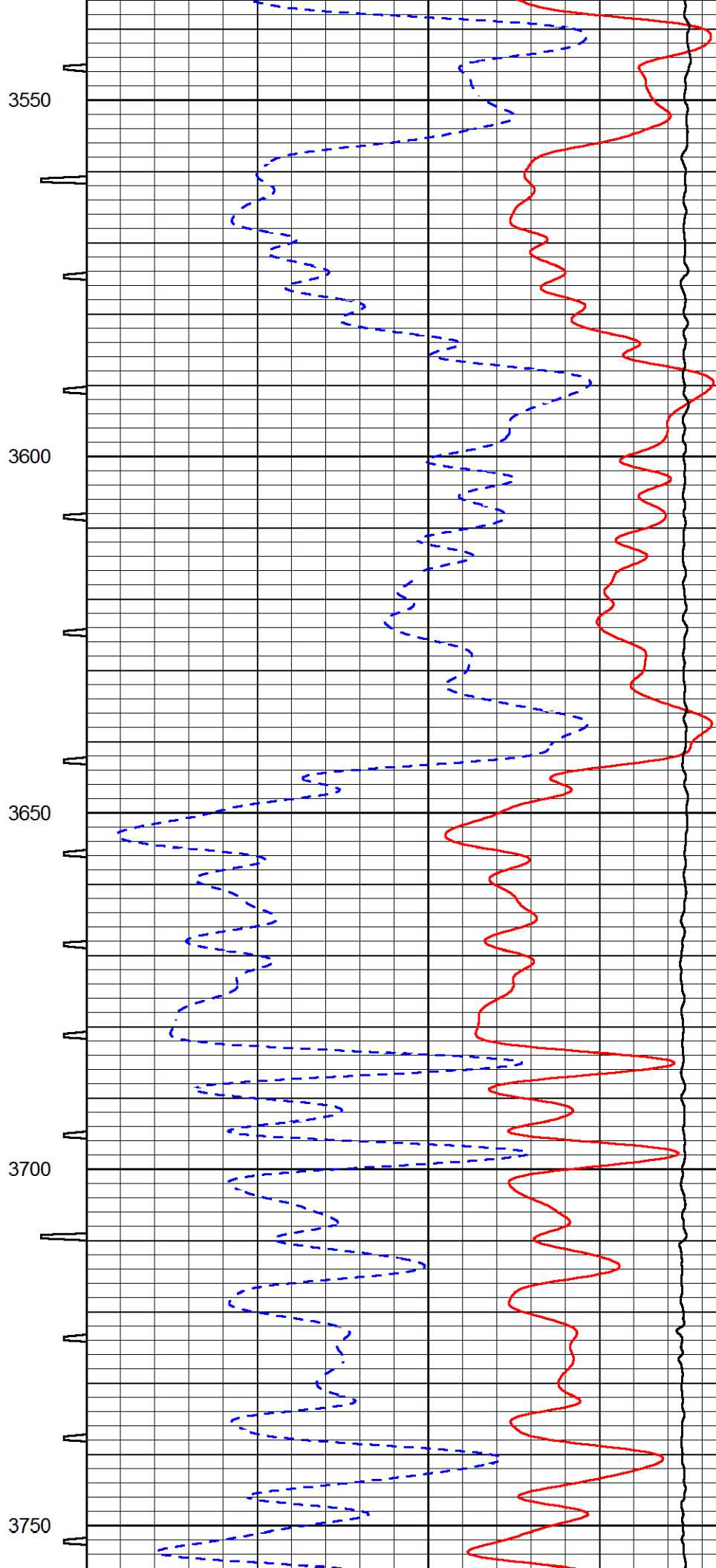
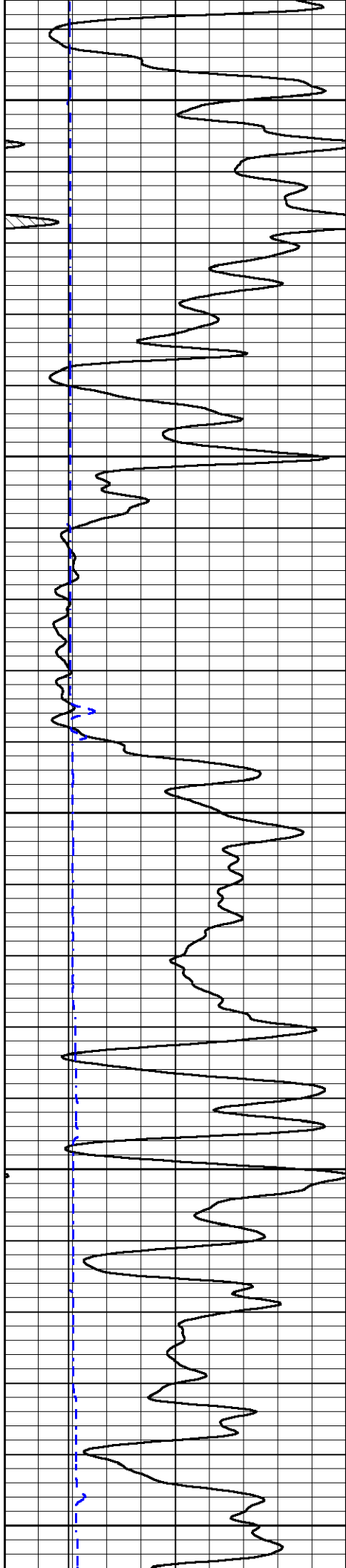


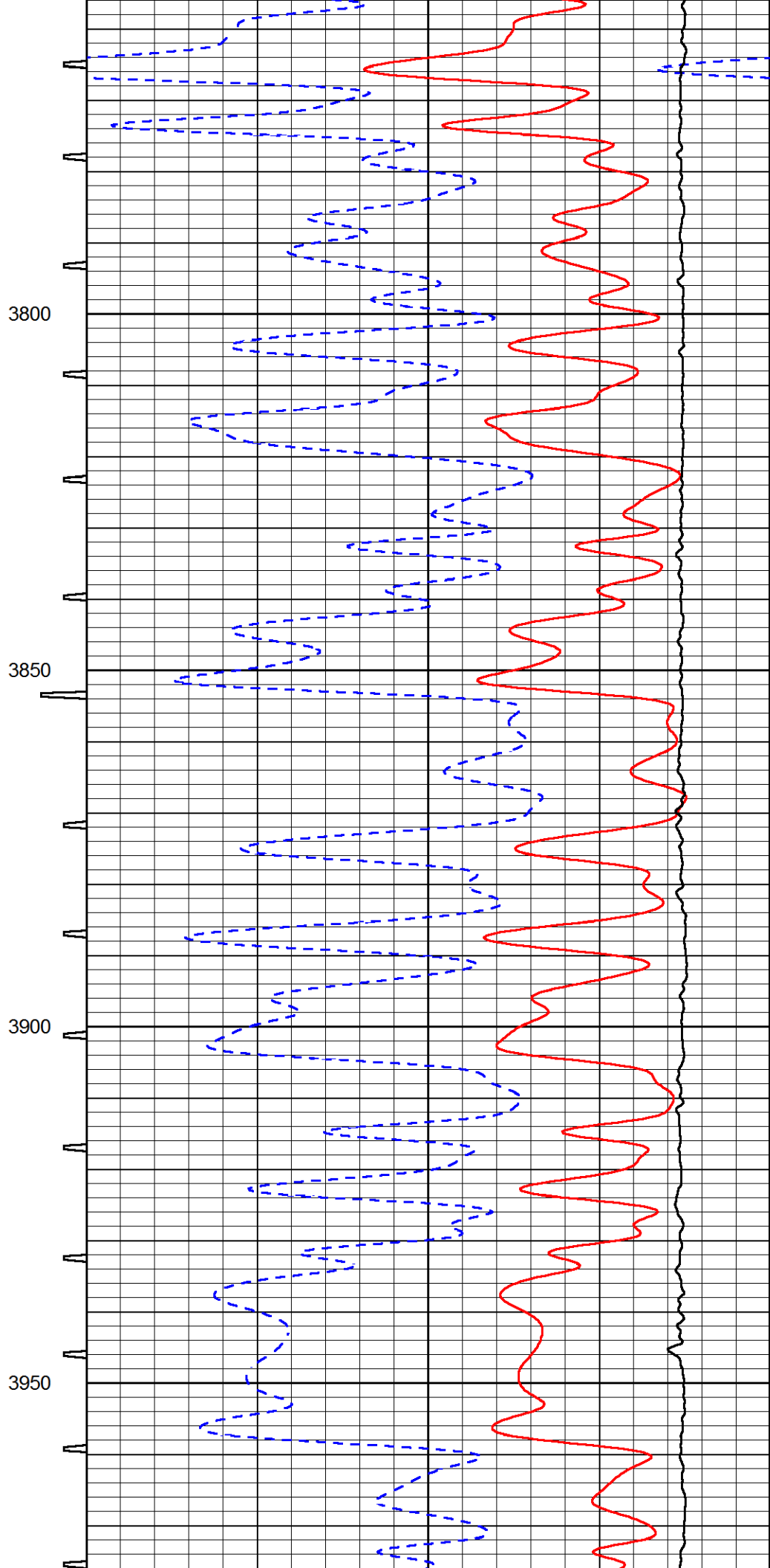
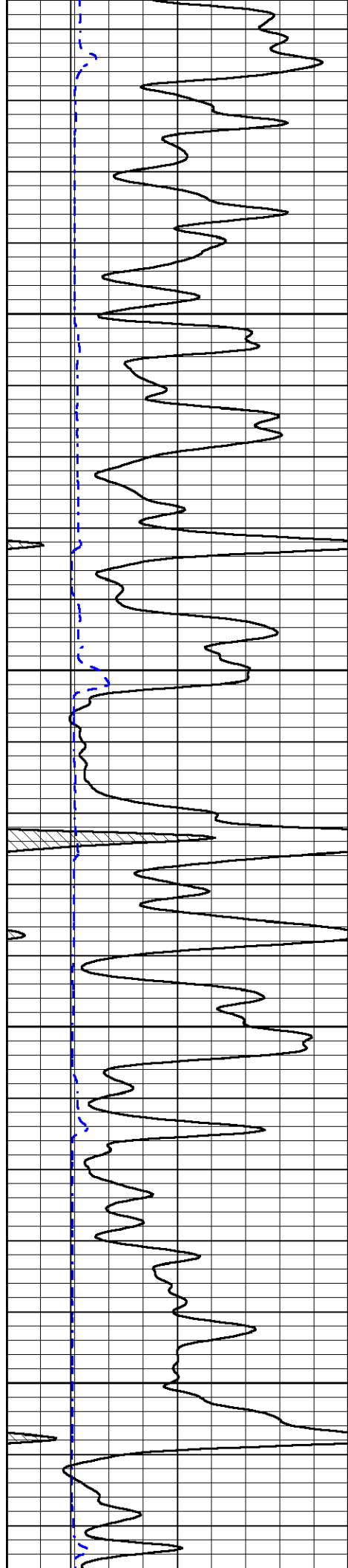


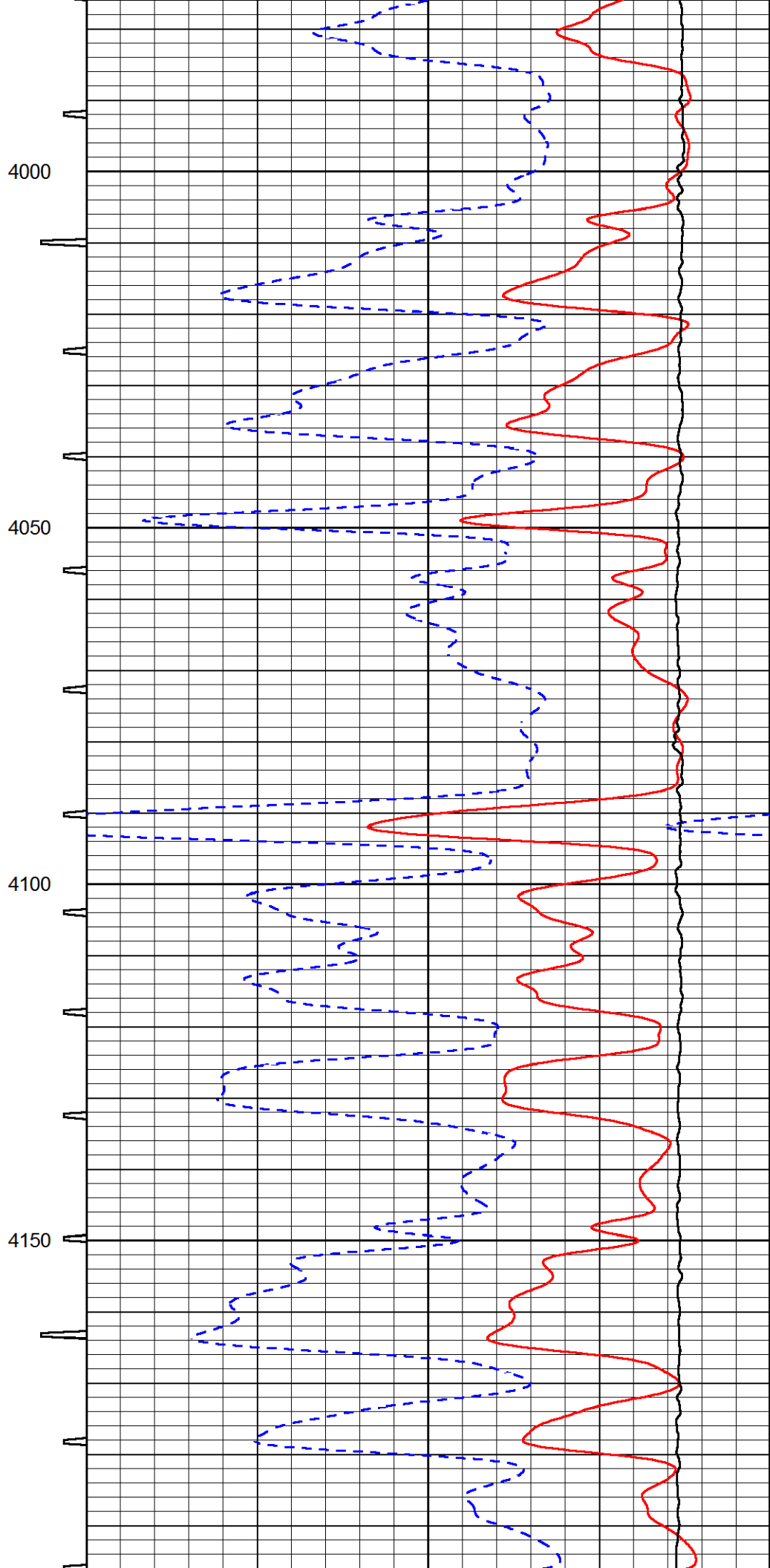
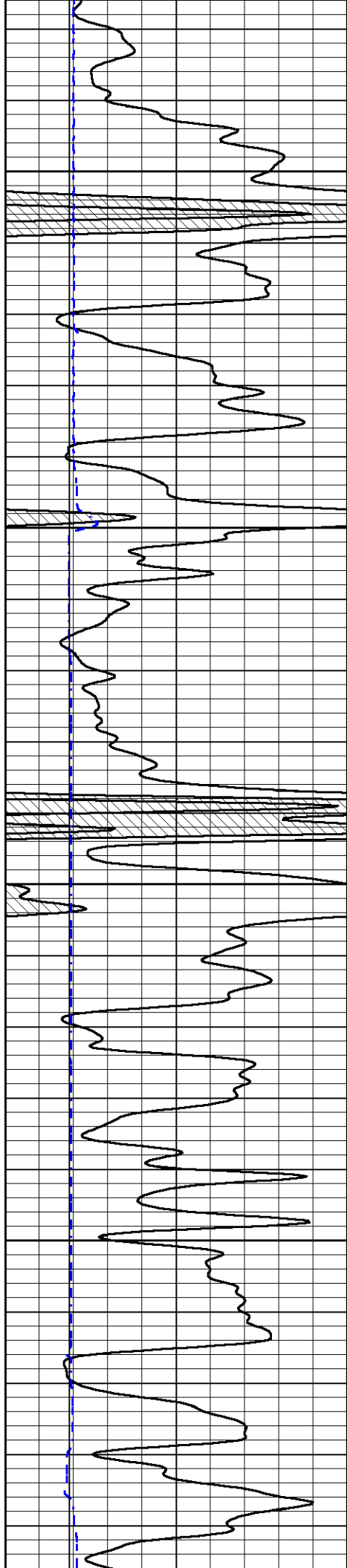


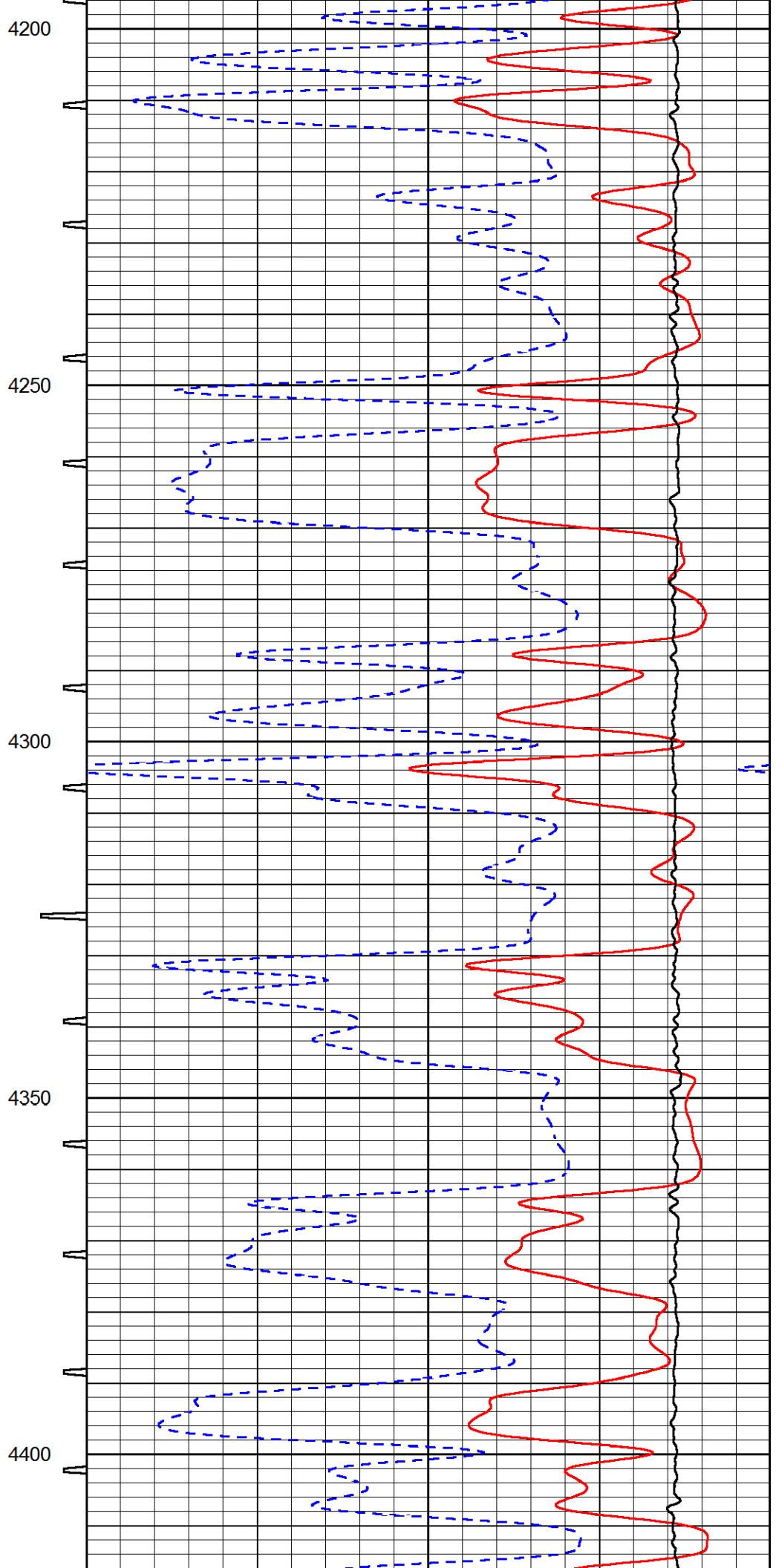
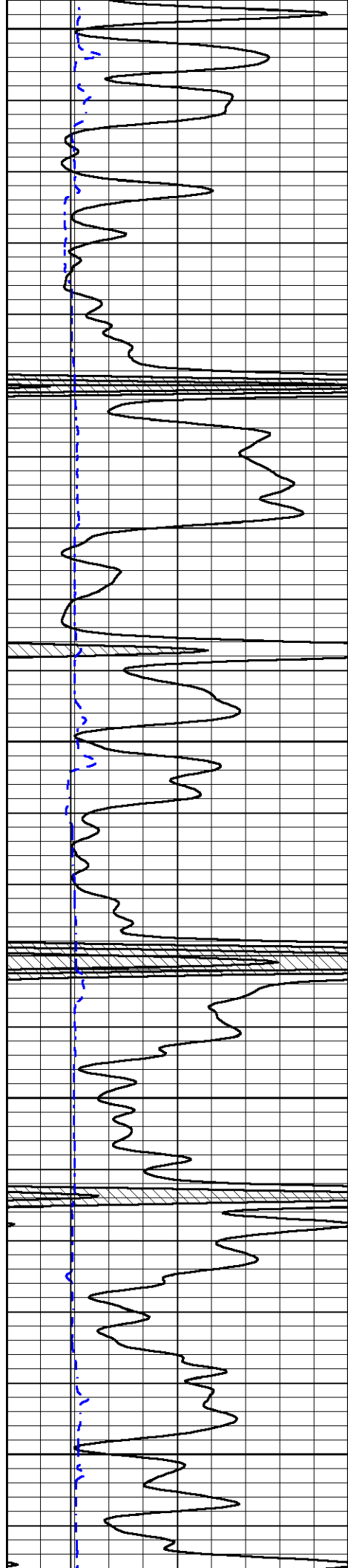


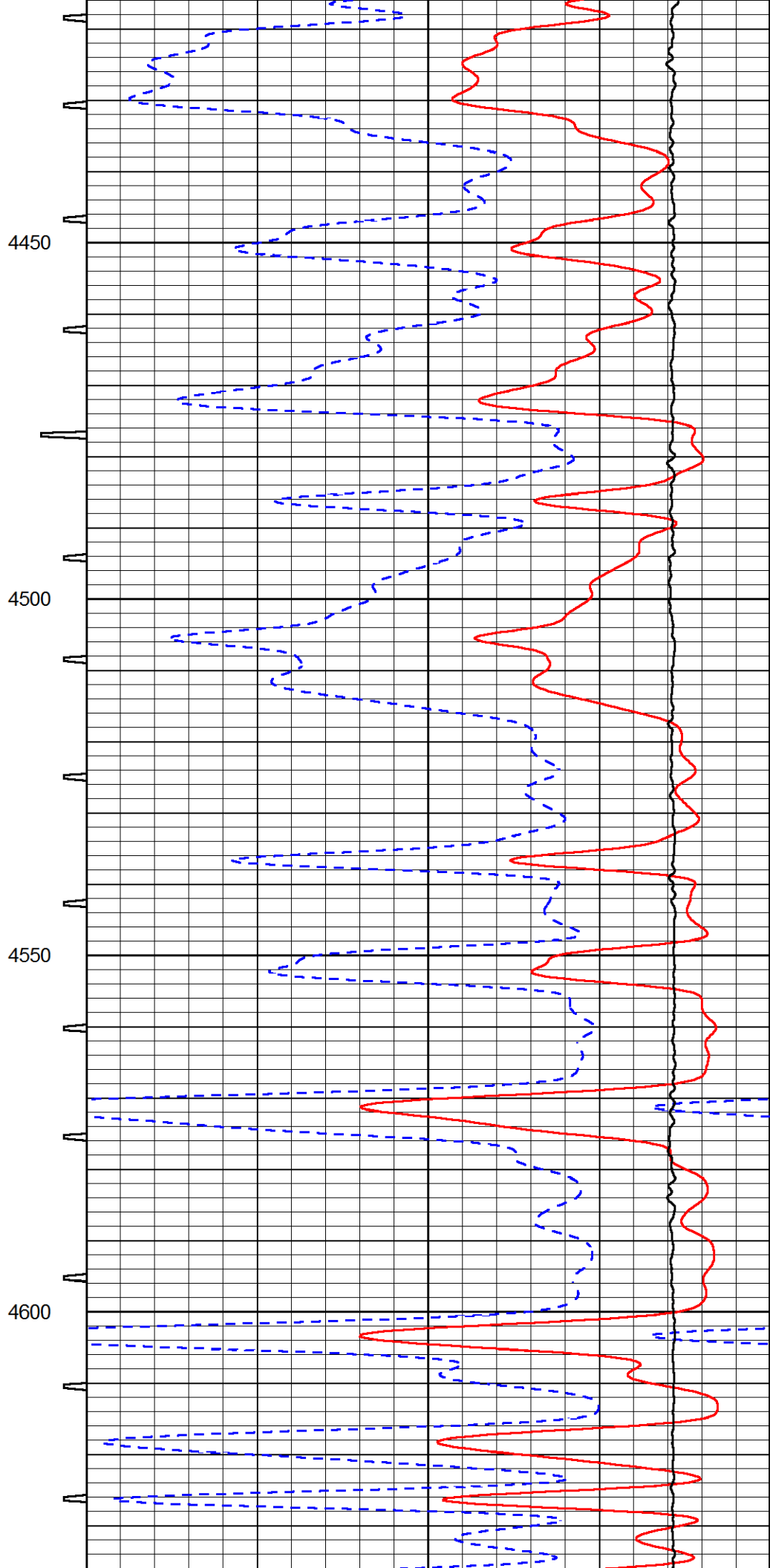
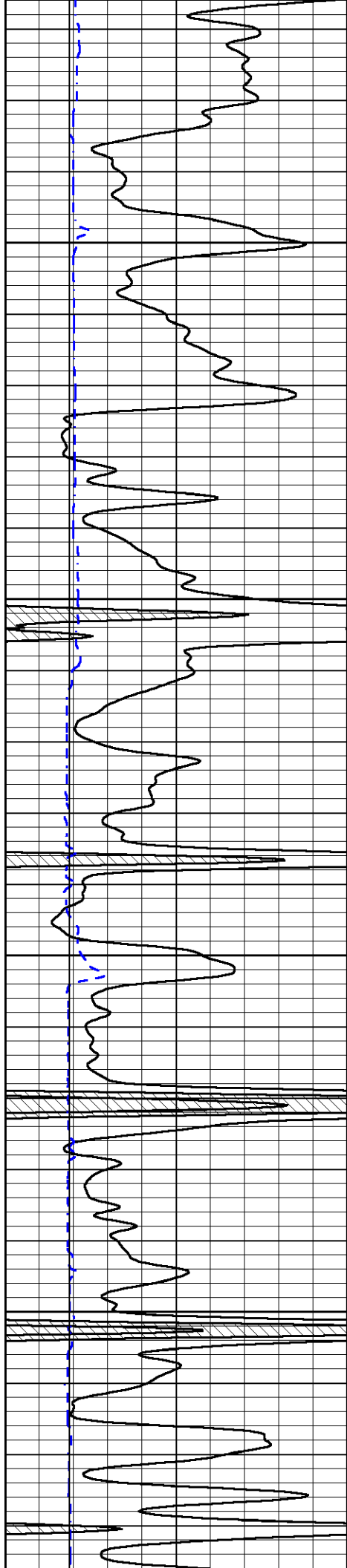


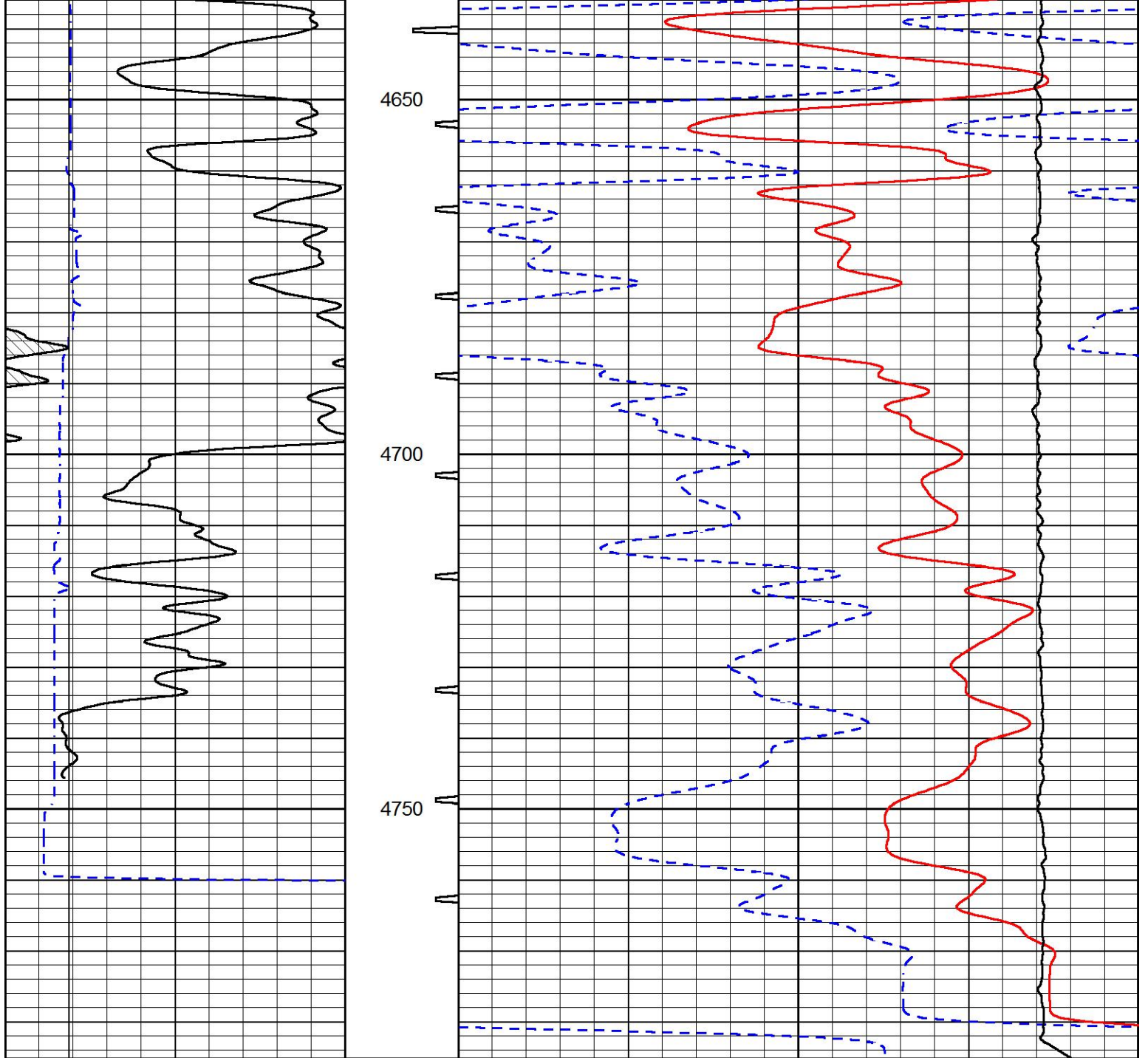












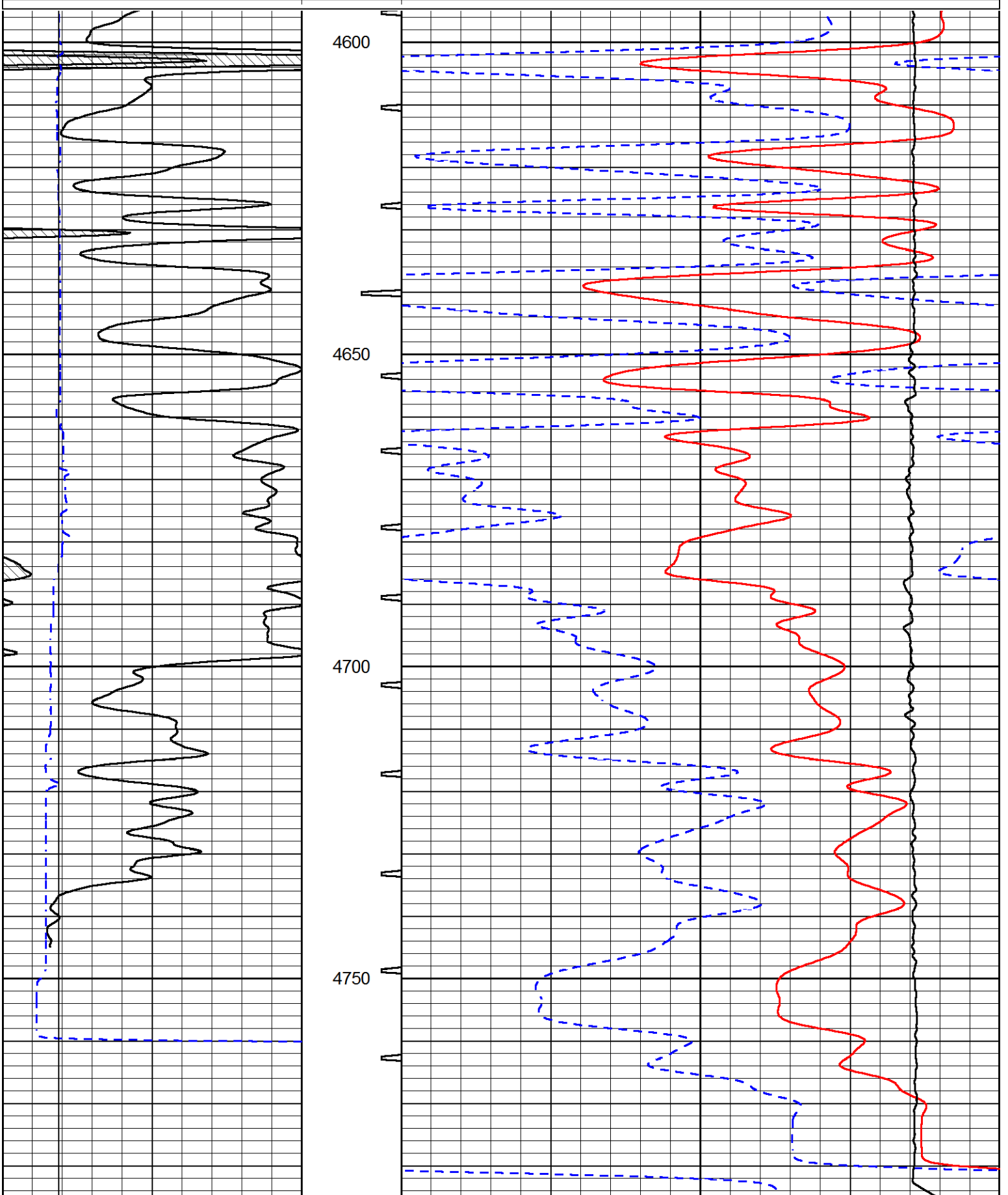
0	GAMMA RAY (GAPI)	150	SONIC INT	140	DELTA TIME (usec/ft) (usec/ft)	40
6	CALIPER (in)	16	TRAVEL TIME	30	SONIC POROSITY (pu)	-10
6	BIT SIZE	16	(msec)	15000	LINE TENSION (lb)	0



# REPEAT SECTION

Database File	funk_3ko_1_5.db				
Dataset Pathname	stackml/pass2.1				
Presentation Format	sonic				
Dataset Creation	Wed Jan 08 15:28:43 2020				
Charted by	Depth in Feet scaled 1:240				

0	GAMMA RAY (GAPI)	150	SONIC INT	140	DELTA TIME (usec/ft) (usec/ft)	40
6	CALIPER (in)	16	TRAVEL TIME	30	SONIC POROSITY (pu)	-10



0	GAMMA RAY (GAPI)	150	SONIC INT	140	DELTA TIME (usec/ft) (usec/ft)	40
6	CALIPER (in)	16	RAVEL TIM	30	SONIC POROSITY (pu)	-10
6	BIT SIZE	16	(msec)	15000	LINE TENSION (lb)	0



Company	FUNK PETROLEUM, LLC
Well	3KO #1-5
Field	WILDCAT
County	THOMAS
State	KANSAS