

MICRO LOG



Company DOWNING NELSON OIL COMPANY, INC.
 Well FLEMMING #1-24
 Field WILDCAT
 County CHEYENNE
 State KANSAS

Company DOWNING NELSON OIL COMPANY, INC.
 Well FLEMMING #1-24
 Field WILDCAT
 County CHEYENNE State KANSAS

Location: API #: 15-023-21521-0000
 1640' FNL & 990' FEL
 SEC 24 TWP 5S RGE 37W
 Permanent Datum GROUND LEVEL Elevation 3299
 Log Measured From KELLY BUSHING 8' A.G.L
 Drilling Measured From KELLY BUSHING
 Other Services CDL/CNL DIL/SON
 Elevation K.B. 3307 D.F. 3305 G.L. 3299

Date	10/6/19		
Run Number	TWO		
Depth Driller	4940		
Depth Logger	4941		
Bottom Logged Interval	4923		
Top Log Interval	3800		
Casing Driller	8 5/8" @ 474'		
Casing Logger	474'		
Bit Size	7 7/8		
Type Fluid in Hole	CHEMICAL MUD	CHLORIDES 5000 PPM	
Density / Viscosity	8.9/56		
pH / Fluid Loss	10.0/7.2		
Source of Sample	FLOWLINE		
Rm @ Meas. Temp	1.30 @ 76F		
Rmf @ Meas. Temp	0.97 @ 76F		
Rmc @ Meas. Temp	1.56 @ 76F		
Source of Rmf / Rmc	MEASUREMENT		
Rm @ BHT	0.79 @ 124F		
Time Circulation Stopped	2 HOURS		
Time Logger on Bottom	////		
Maximum Recorded Temperature	124F		
Equipment Number	3802		
Location	HAYS, KANSAS		
Recorded By	JASON CAPPELLUCCI		
Witnessed By	MARC DOWNING		

<<< Fold Here >>>

All interpretations are opinions based on inferences from electrical or other measurements and we cannot and do not guarantee the accuracy or correctness of any interpretation, and we shall not, except in the case of gross or willful negligence on our part, be liable or responsible for any loss, costs, damages, or expenses incurred or sustained by anyone resulting from any interpretation made by any of our officers, agents or employees. These interpretations are also subject to our general terms and conditions set out in our current Price Schedule.

Comments

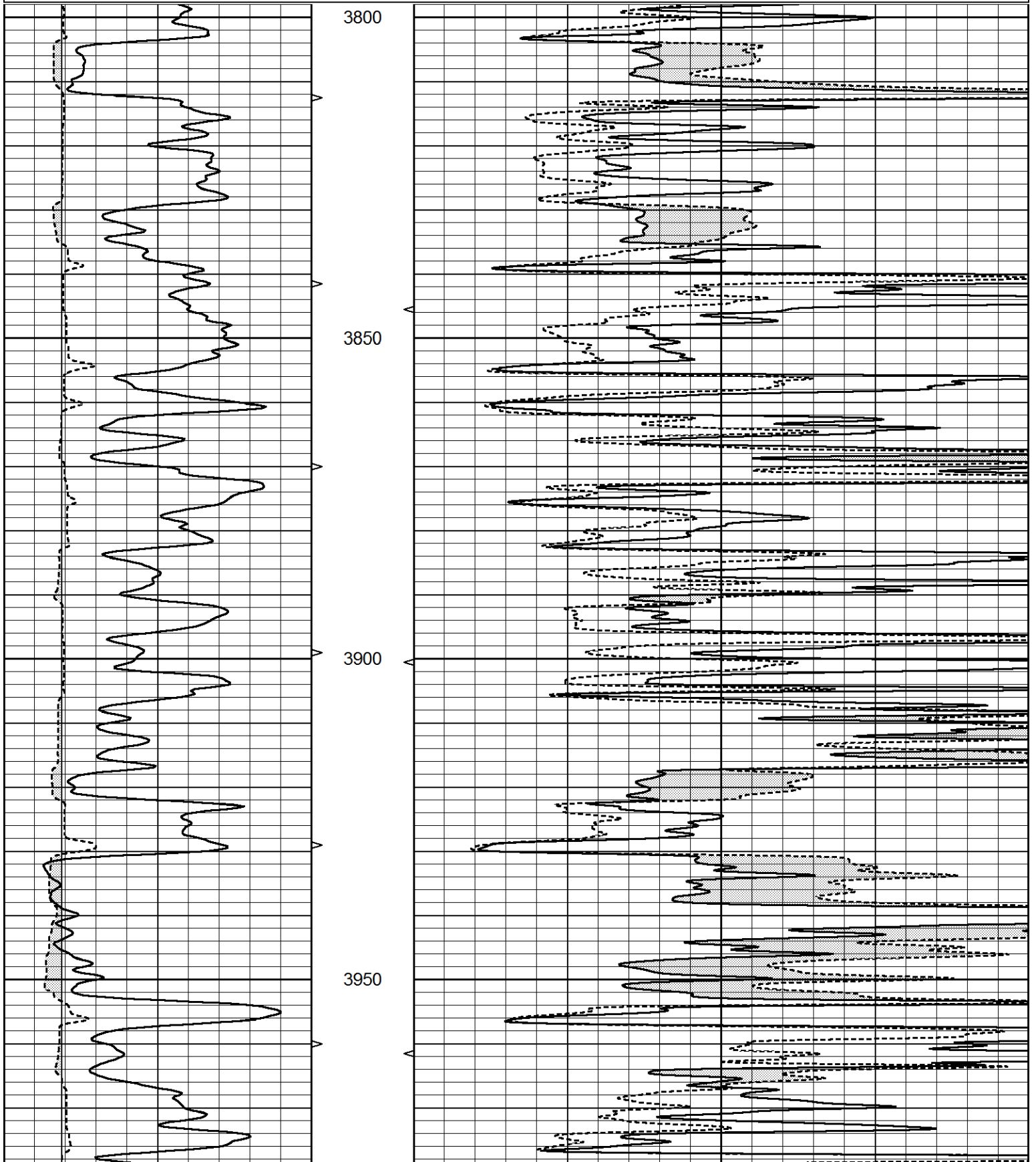
THANK YOU FOR USING ELI WIRELINE SERVICES, HAYS, KS. (785) 628-6395
 DIRECTIONS
 BREWSTER, KS. - 16 NORTH TO THE T - WEST TO RD. 34 - NORTH 3 MILES
 JUST PAST RD. D - EAST INTO

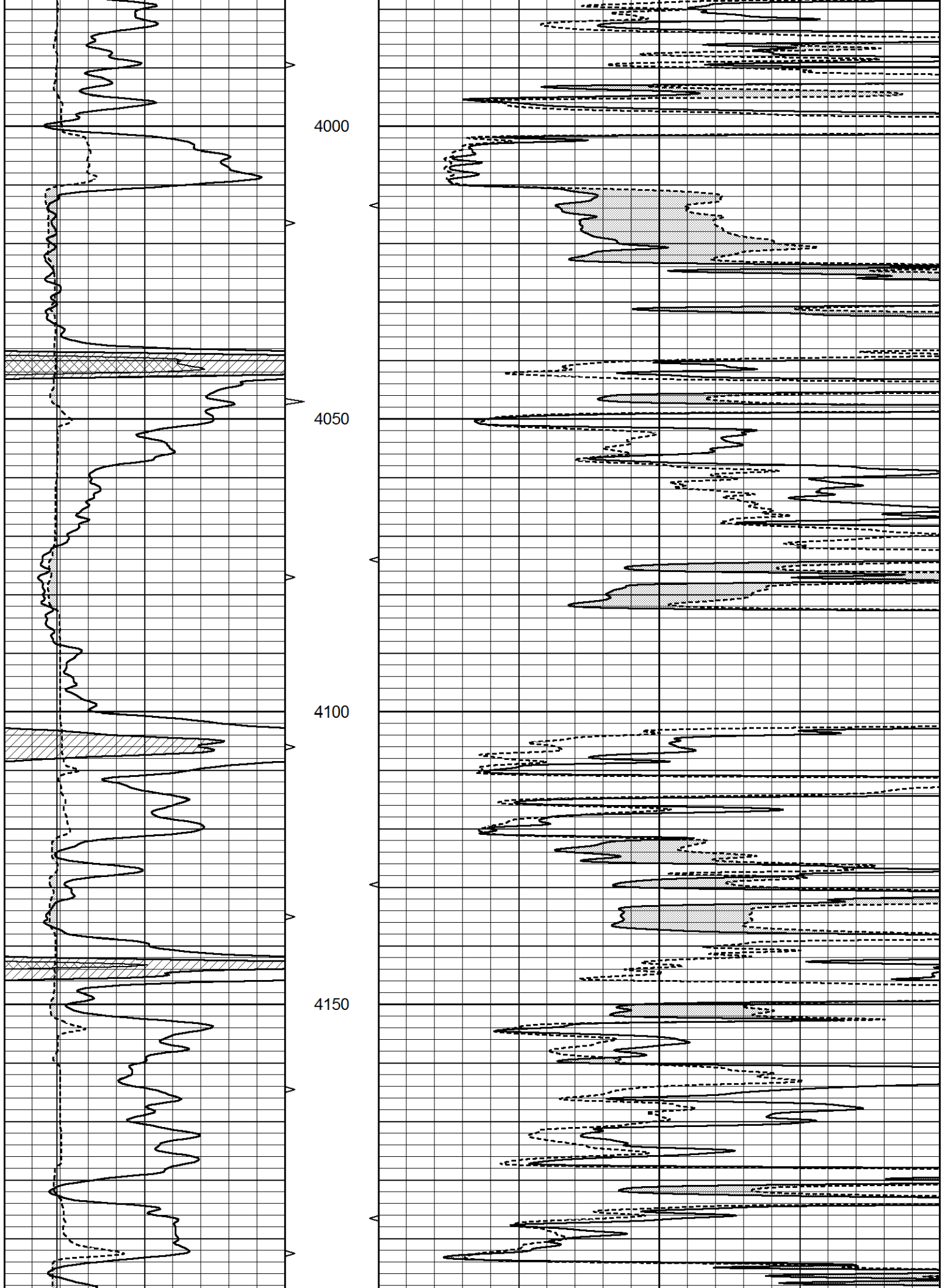


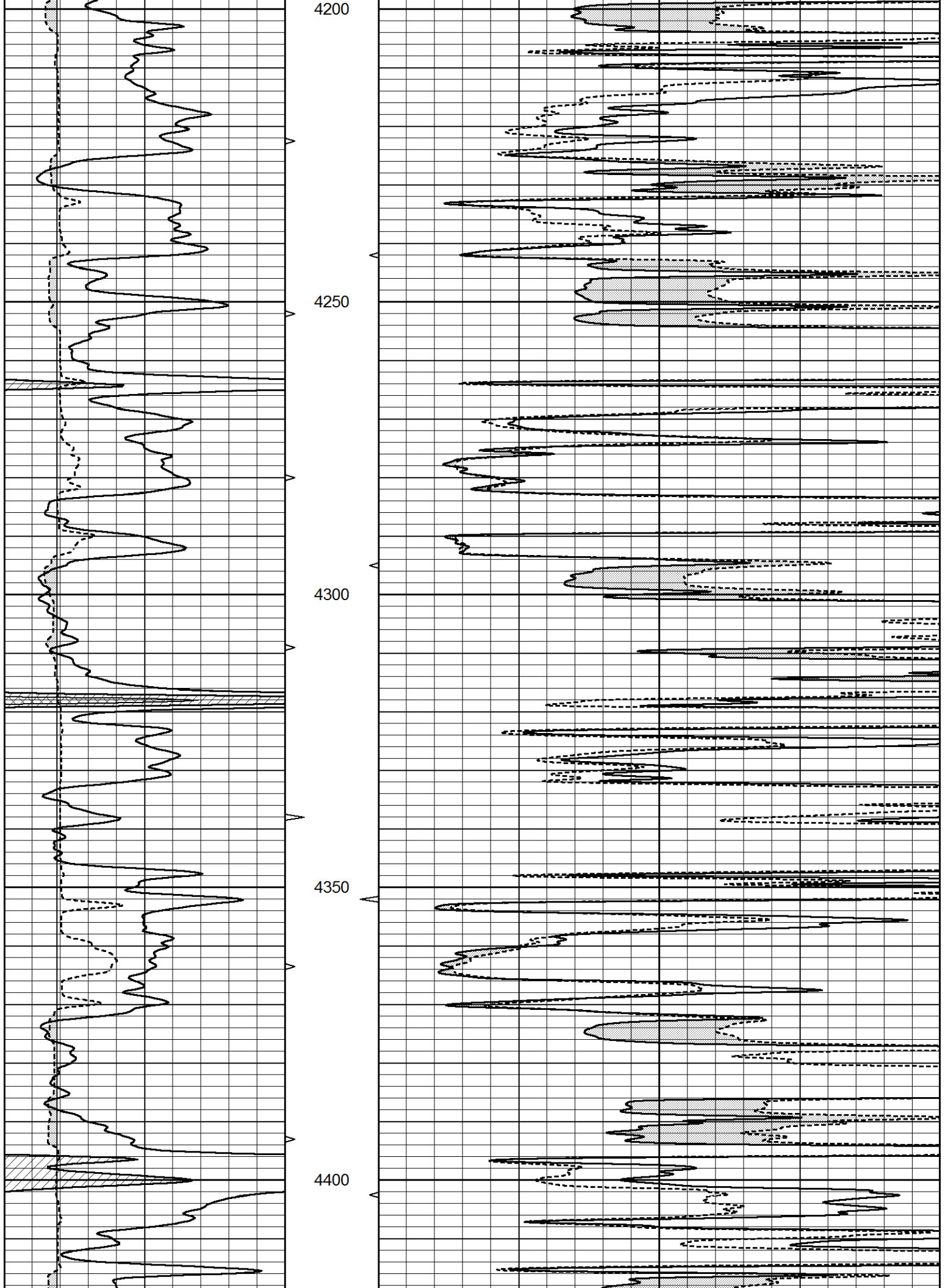
MAIN SECTION

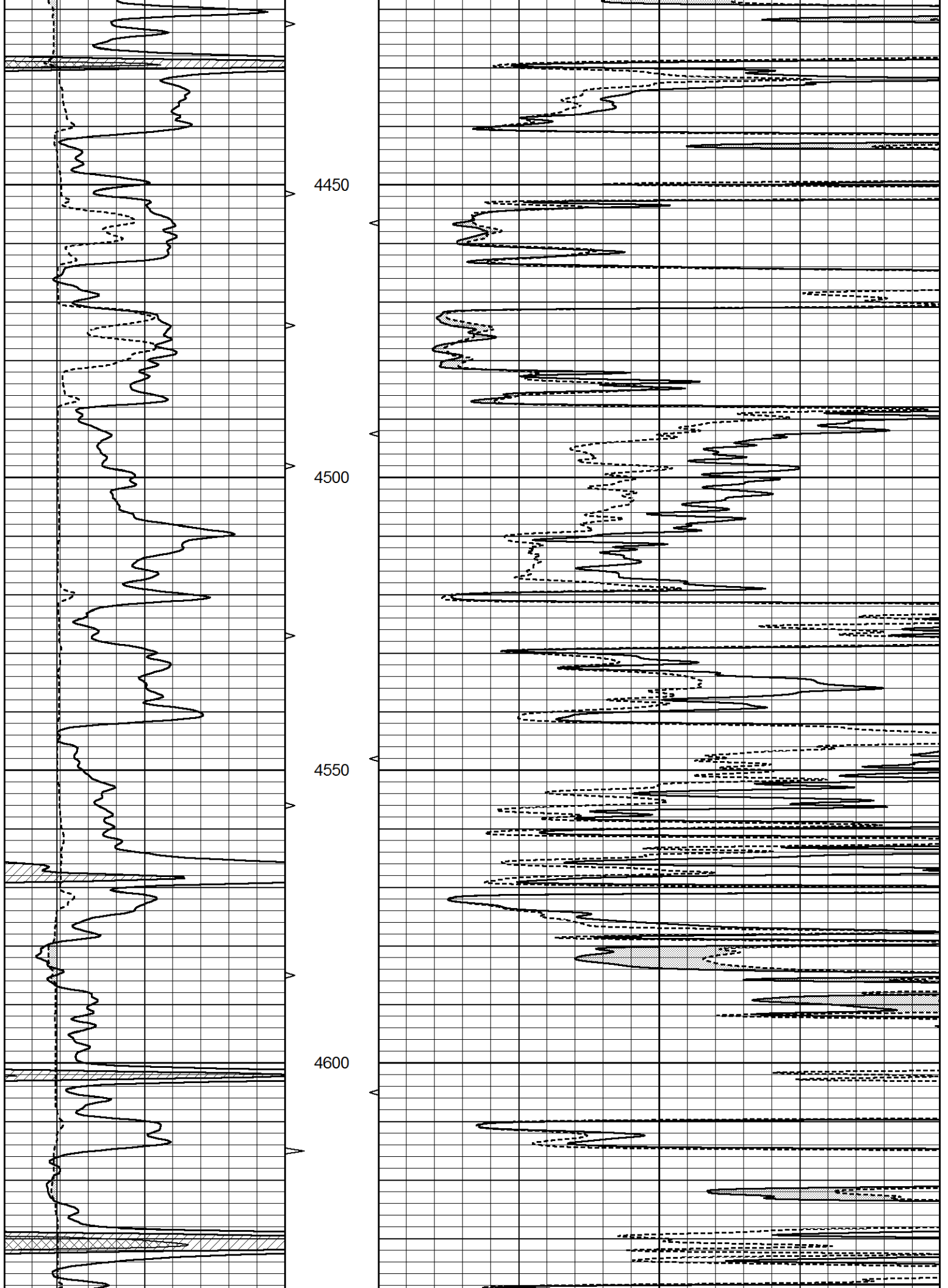
Database File 3997ddn8.db
 Dataset Pathname pass12.1
 Presentation Format _micro
 Dataset Creation Sun Oct 06 10:03:19 2019
 Charted by Depth in Feet scaled 1:240

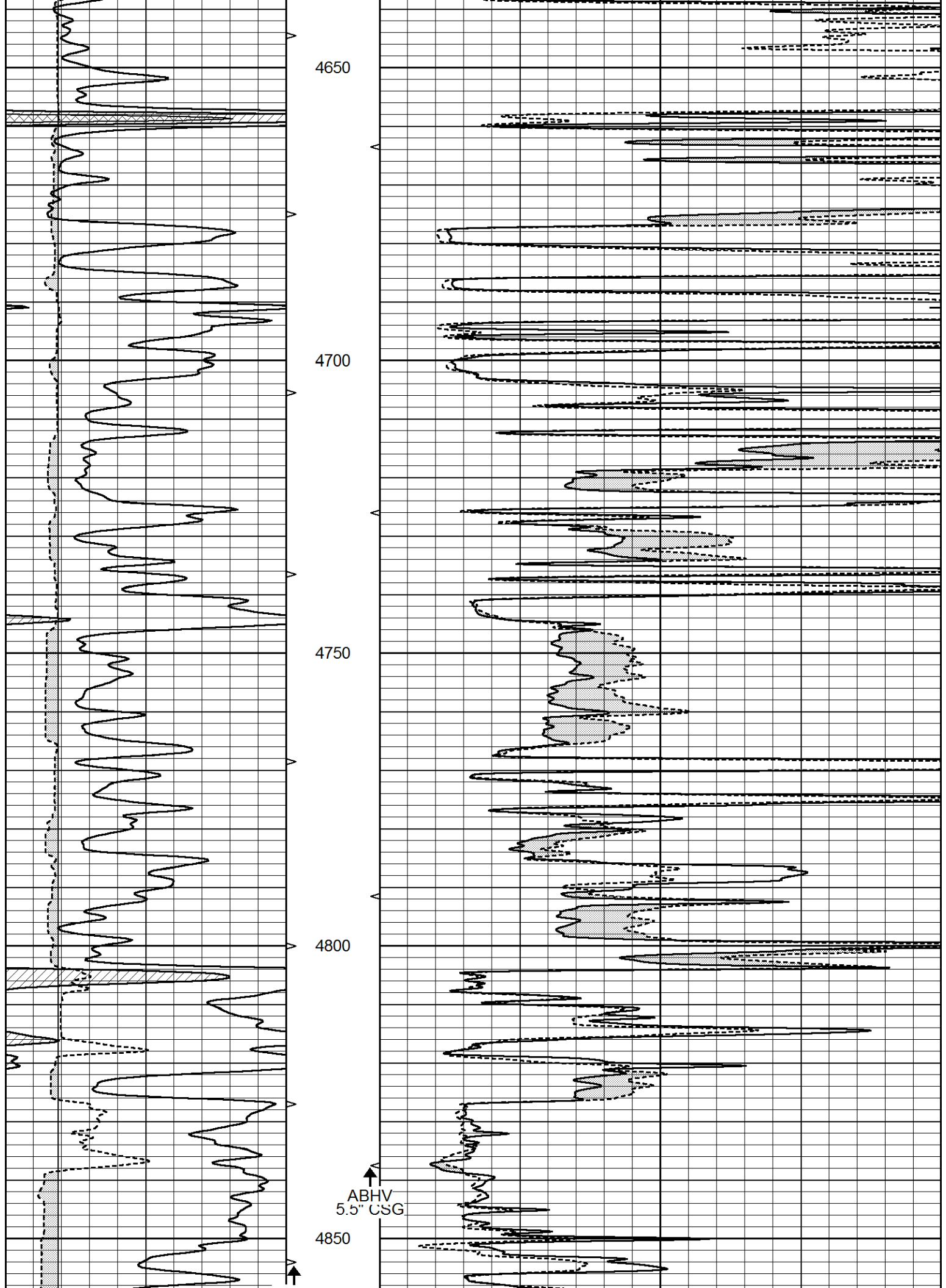
0	GAMMA RAY (GAPI)	150	ABHV	0	MEL1.5 (Ohm-m)	40
6	CALIPER (in)	16	10 (ft3)	0	MEL2.0 (Ohm-m)	40
			TBHV			
			0 (ft3)	10		

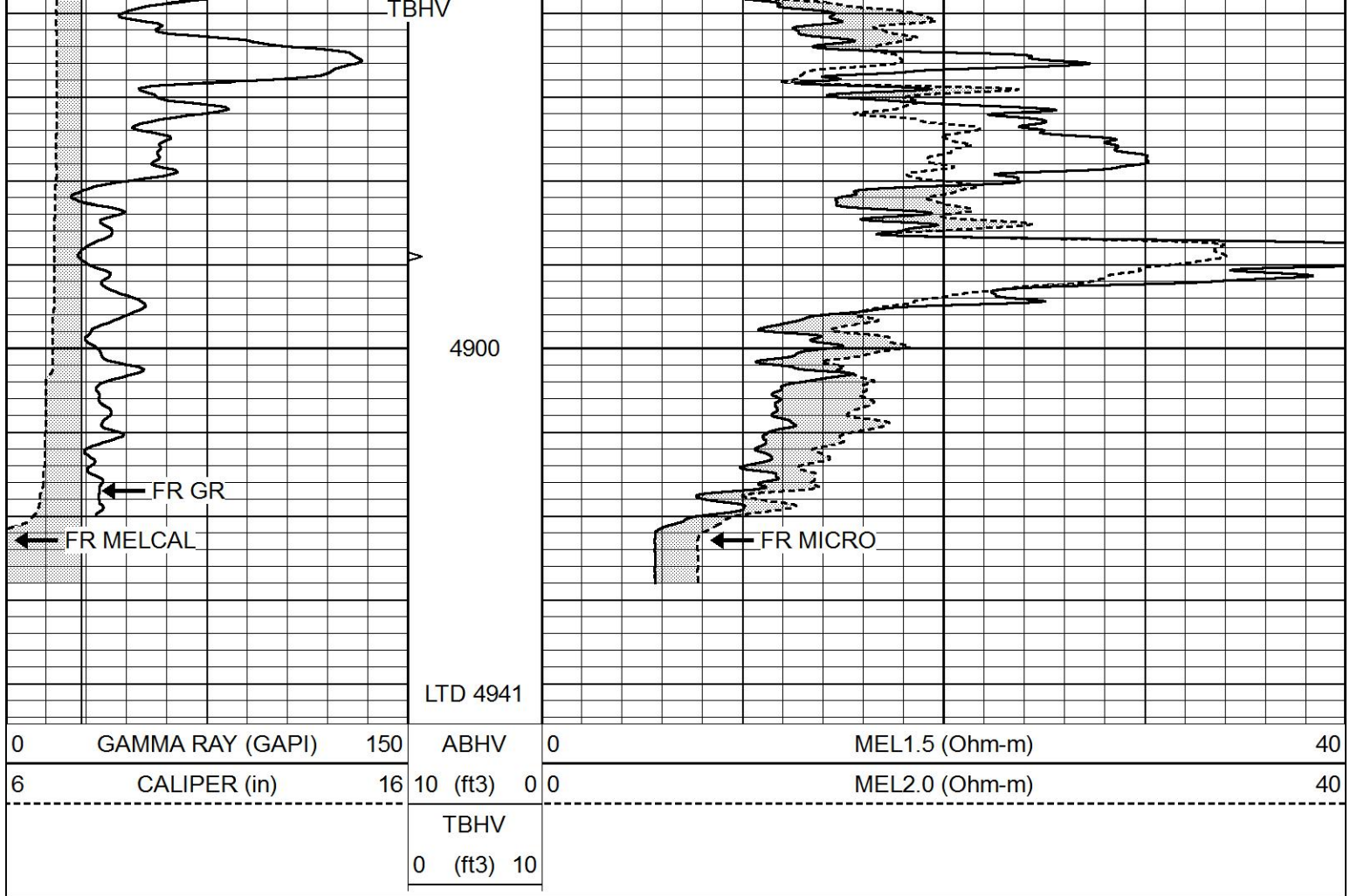








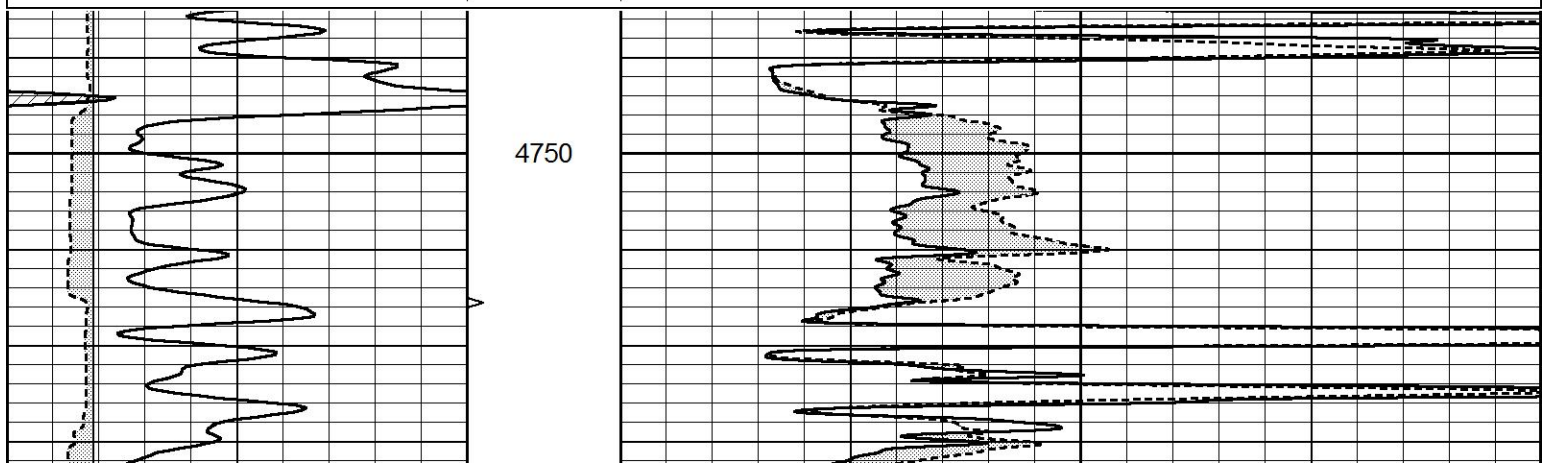


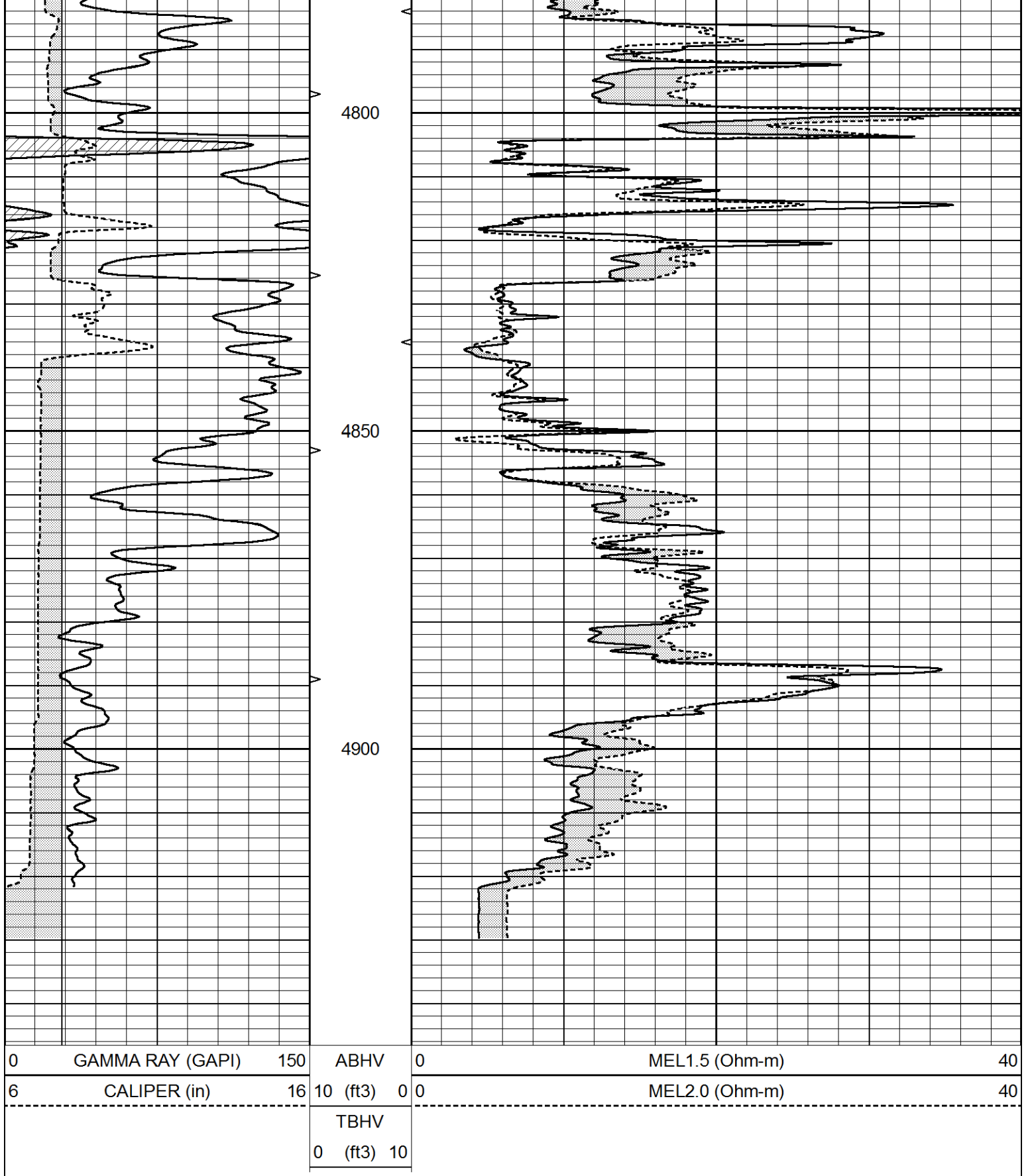


REPEAT SECTION

Database File 3997ddn8.db
 Dataset Pathname pass11.1
 Presentation Format _micro
 Dataset Creation Sun Oct 06 09:47:27 2019
 Charted by Depth in Feet scaled 1:240

0	GAMMA RAY (GAPI)	150	ABHV	0	MEL1.5 (Ohm-m)	40
6	CALIPER (in)	16	10 (ft3) 0	0	MEL2.0 (Ohm-m)	40
			TBHV			
			0 (ft3) 10			





Calibration Report

Database File 3997ddn8.db
 Dataset Pathname pass11.1
 Dataset Creation Sun Oct 06 09:47:27 2019

MICRO_USR Calibration Report

Serial Number: 070910
 Tool Model: Probel

Tool Model: ProbeL
Performed: Fri Aug 03 23:13:00 2018

Caliper Calibration: Gain=7.336 Offset=3.017
References Low Cal High Cal
8.000 14.000
Readings 0.652 1.470

1.5" Calibration: Gain=55.000 Offset=-0.067
References Low Cal High Cal
0.000 20.000
Readings 0.004 1.335

2" Calibration: Gain=75.000 Offset=-0.779
References Low Cal High Cal
0.000 20.000
Readings 0.004 1.029

Microlog Calibration Report

Serial-Model: 070910-ProbeL
Performed: (Not Performed)

	Readings			References			Results	
	Zero	Cal		Zero	Cal		m	b
Normal	0.0000	1.0000	V	0.0000	1.0000	Ohm-m	1.0000	0.0000
Inverse	0.0000	1.0000	V	0.0000	1.0000	Ohm-m	1.0000	0.0000
Caliper	0.0000	1.0000	V	0.0000	1.0000	in	1.0000	0.0000

Gamma Ray Calibration Report

Serial Number: 070558
Tool Model: Probe1
Performed: Mon Jan 21 19:38:56 2019
Calibrator Value: 1.0 GAPI
Background Reading: 0.0 cps
Calibrator Reading: 1.0 cps
Sensitivity: 0.2500 GAPI/cps